

Data Path : P:\HPCHEM1\ECD O\Data\PO060418\  
 Data File : PO045410.D  
 Signal(s) : Signal #1: ECD1A.CH Signal #2: ECD2B.CH  
 Acq On : 03 Jun 2018 13:32  
 Operator : SM/UA  
 Sample : J3191-02  
 Misc :  
 ALS Vial : 10 Sample Multiplier: 1

**Instrument :**  
 ECD\_O  
**ClientSampleId :**  
 BRICKWALL-DRUM

**Manual Integrations**  
**APPROVED**  
 UGO  
 6/4/2018 5:23:32 PM

Integration File signal 1: autoint1.e  
 Integration File signal 2: autoint2.e  
 Quant Time: Jun 04 07:26:49 2018  
 Quant Method : P:\HPCHEM1\ECD\_O\methods\PO053018.M  
 Quant Title : GC EXTRACTABLES  
 QLast Update : Thu May 31 04:53:22 2018  
 Response via : Initial Calibration  
 Integrator: ChemStation 6890 Scale Mode: Small noise peaks clipped

Volume Inj. : 2 ul  
 Signal #1 Phase : ZB-MR1 Signal #2 Phase: ZB-MR2  
 Signal #1 Info : 30Mx0.32mmx 0.50µ Signal #2 Info : 30M x 0.32mm x 0.25µm

Compound	RT#1	RT#2	Resp#1	Resp#2	nq/ml	nq/ml
-----						
System Monitoring Compounds						
1) SA Tetrachlo...	3.998	3.276	3131716	3189975	14.993m	11.504
2) SA Decachlor...	9.275	7.992	3991311	4105677	17.379	14.567
Target Compounds						
31) L7 AR-1260-1	6.653	5.686	5307557	5410519	458.214	330.554 #
32) L7 AR-1260-2	6.902	5.872	5064904	5246137	332.851	248.308 #
33) L7 AR-1260-3	7.252	6.217	4976201	5408745	391.964	285.762 #
34) L7 AR-1260-4	7.773	6.710	10925136	11414223	384.573	289.913
35) L7 AR-1260-5	8.056	7.041	7195405	8801506	430.106m	319.778 #
-----						

(f)=RT Delta > 1/2 Window (#)=Amounts differ by > 25% (m)=manual int.

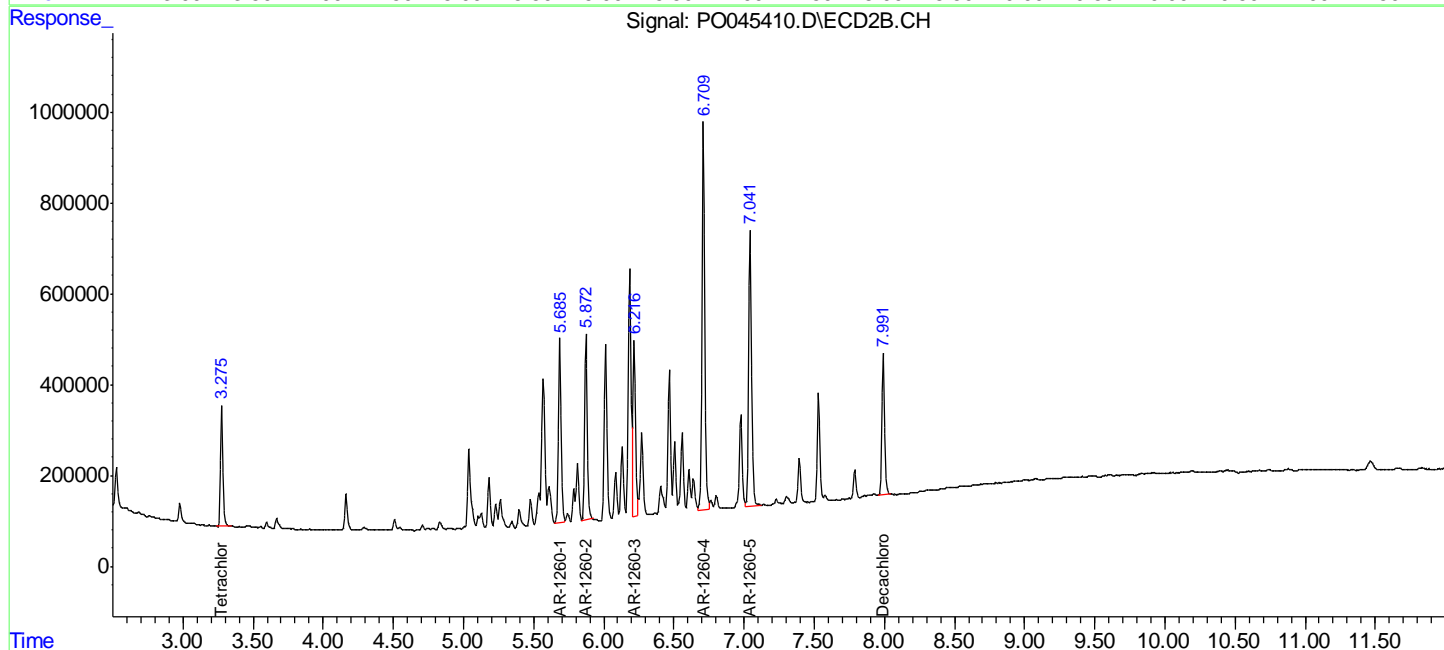
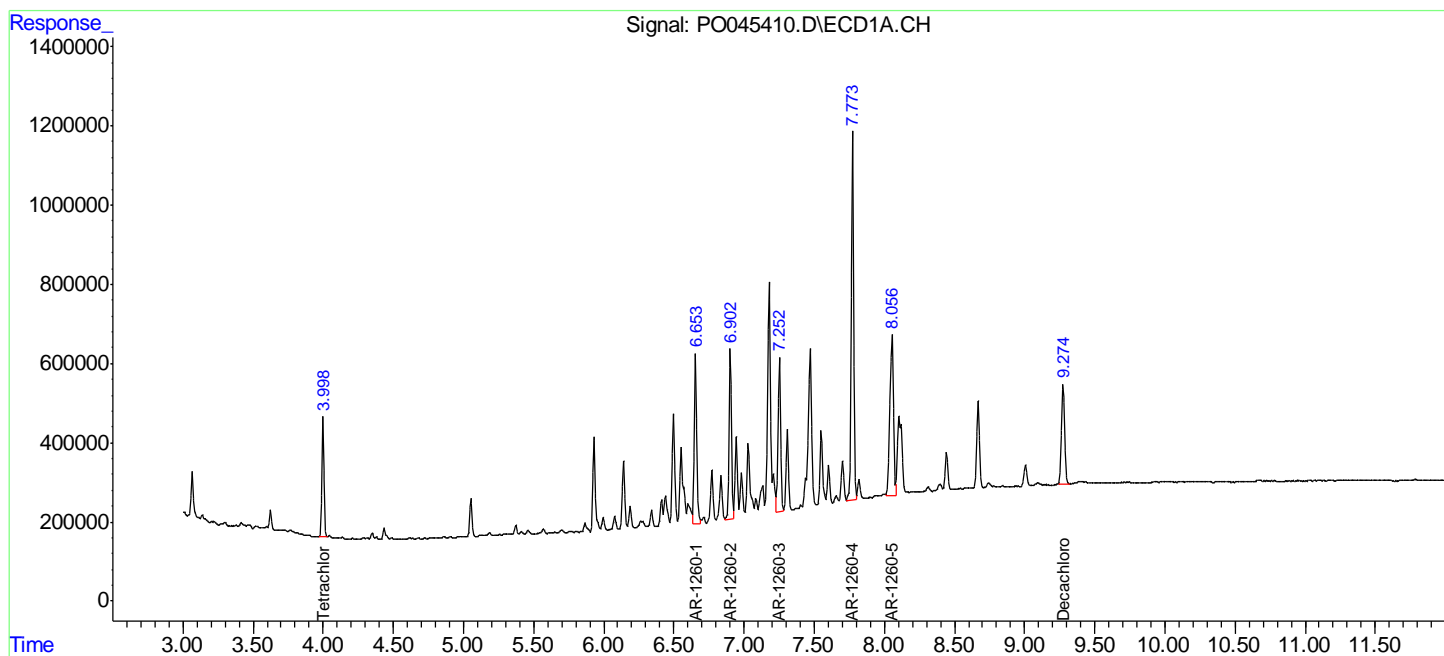
Data Path : P:\HPCHEM1\ECD O\Data\PO060418\  
 Data File : PO045410.D  
 Signal(s) : Signal #1: ECD1A.CH Signal #2: ECD2B.CH  
 Acq On : 03 Jun 2018 13:32  
 Operator : SM/UA  
 Sample : J3191-02  
 Misc :  
 ALS Vial : 10 Sample Multiplier: 1

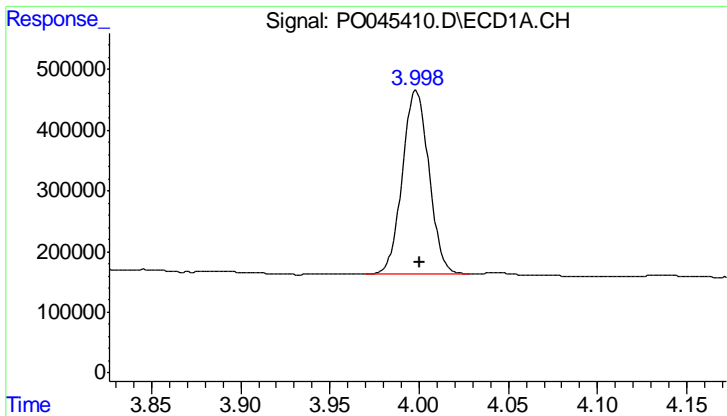
Instrument :  
 ECD\_O  
 Client Sampled :  
 BRICKWALL-DRUM

Manual Integrations  
**APPROVED**  
 UGO  
 6/4/2018 5:23:32 PM

Integration File signal 1: autoint1.e  
 Integration File signal 2: autoint2.e  
 Quant Time: Jun 04 07:26:49 2018  
 Quant Method : P:\HPCHEM1\ECD\_O\methods\PO053018.M  
 Quant Title : GC EXTRACTABLES  
 QLast Update : Thu May 31 04:53:22 2018  
 Response via : Initial Calibration  
 Integrator: ChemStation 6890 Scale Mode: Small noise peaks clipped

Volume Inj. : 2 ul  
 Signal #1 Phase : ZB-MR1 Signal #2 Phase: ZB-MR2  
 Signal #1 Info : 30Mx0.32mmx 0.50µ Signal #2 Info : 30M x 0.32mm x 0.25µm



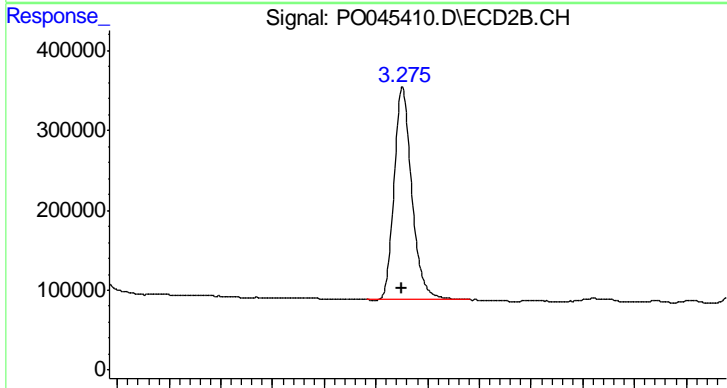


#1 Tetrachloro-m-xylene

R.T.: 3.998 min  
 Delta R.T.: -0.003 min  
 Response: 3131716  
 Conc: 14.99 ng/ml

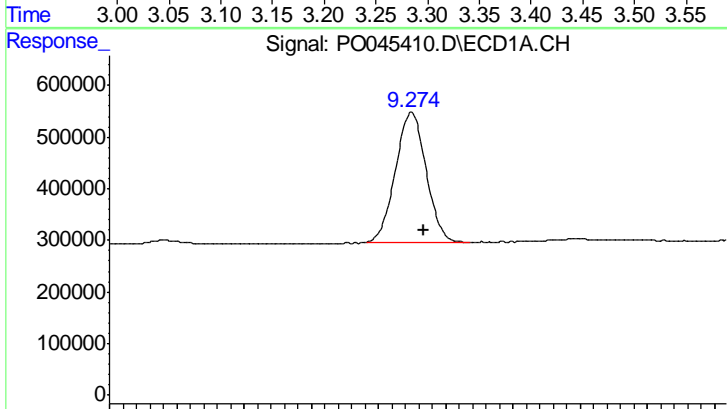
Instrument :  
 ECD\_O  
 ClientSampleId :  
 BRICKWALL-DRUM

Manual Integrations  
 APPROVED  
 UGO  
 6/4/2018 5:23:32 PM



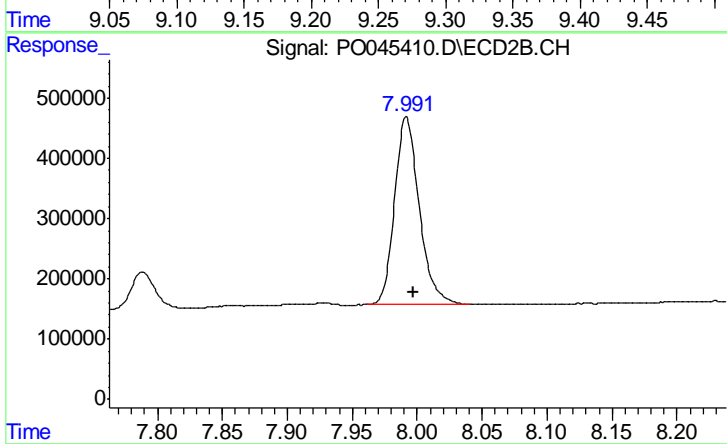
#1 Tetrachloro-m-xylene

R.T.: 3.276 min  
 Delta R.T.: 0.000 min  
 Response: 3189975  
 Conc: 11.50 ng/ml



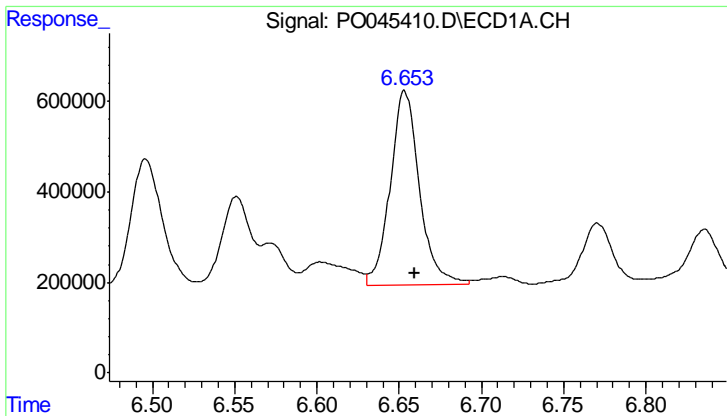
#2 Decachlorobiphenyl

R.T.: 9.275 min  
 Delta R.T.: -0.009 min  
 Response: 3991311  
 Conc: 17.38 ng/ml



#2 Decachlorobiphenyl

R.T.: 7.992 min  
 Delta R.T.: -0.006 min  
 Response: 4105677  
 Conc: 14.57 ng/ml

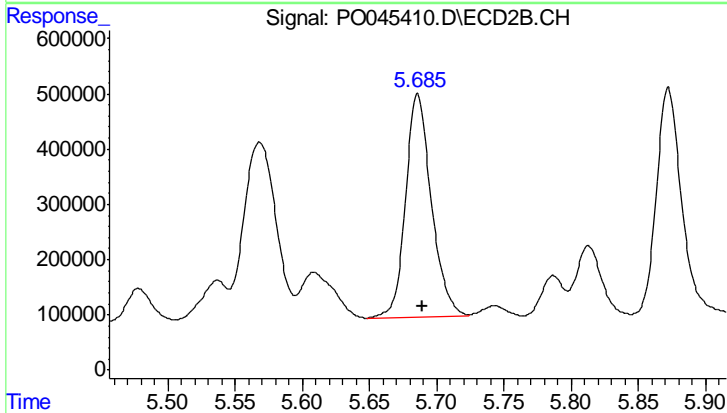


#31 AR-1260-1

R.T.: 6.653 min  
 Delta R.T.: -0.006 min  
 Response: 5307557  
 Conc: 458.21 ng/ml

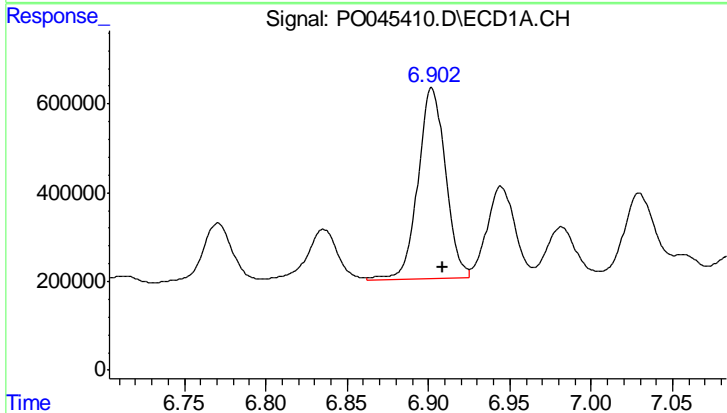
**Instrument :**  
 ECD\_O  
**ClientSampled :**  
 BRICKWALL-DRUM

**Manual Integrations**  
**APPROVED**  
 UGO  
 6/4/2018 5:23:32 PM



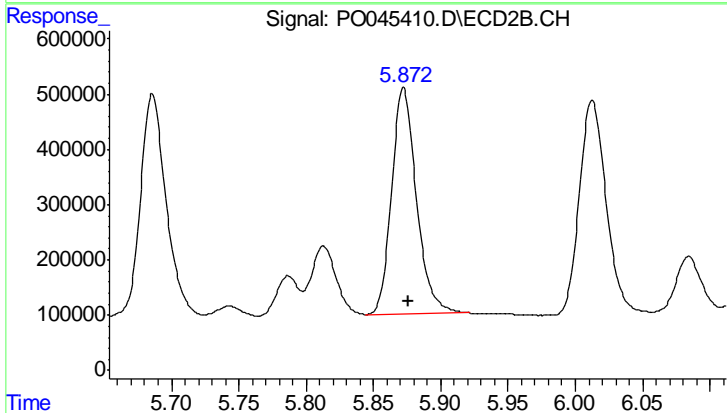
#31 AR-1260-1

R.T.: 5.686 min  
 Delta R.T.: -0.004 min  
 Response: 5410519  
 Conc: 330.55 ng/ml



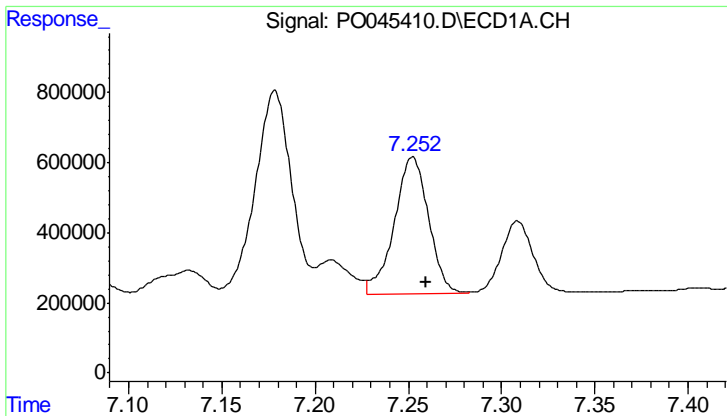
#32 AR-1260-2

R.T.: 6.902 min  
 Delta R.T.: -0.007 min  
 Response: 5064904  
 Conc: 332.85 ng/ml



#32 AR-1260-2

R.T.: 5.872 min  
 Delta R.T.: -0.004 min  
 Response: 5246137  
 Conc: 248.31 ng/ml



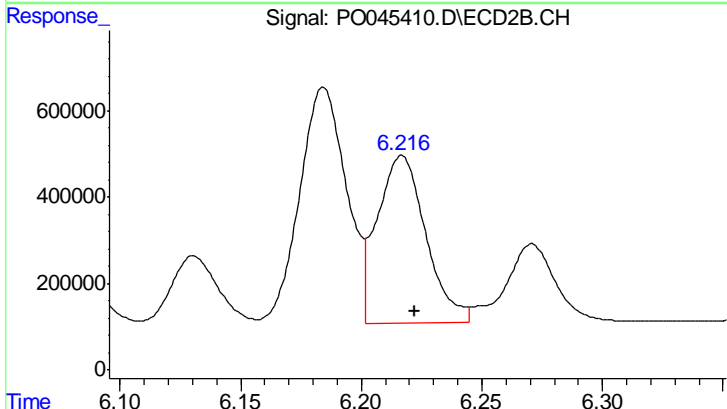
#33 AR-1260-3

R.T.: 7.252 min  
 Delta R.T.: -0.007 min  
 Response: 4976201  
 Conc: 391.96 ng/ml

Instrument :  
 ECD\_O  
 ClientSampleId :  
 BRICKWALL-DRUM

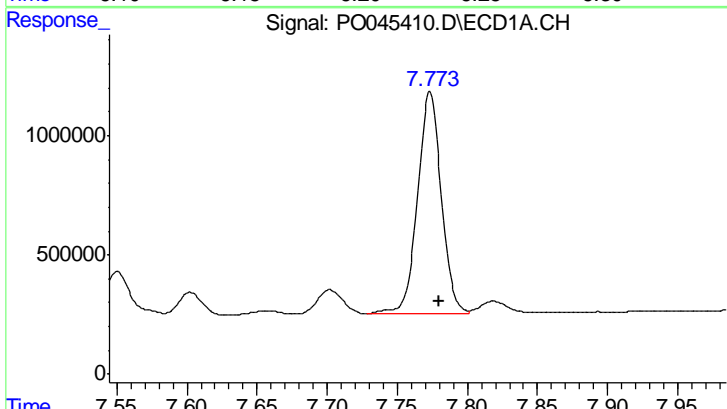
Manual Integrations  
 APPROVED

UGO  
 6/4/2018 5:23:32 PM



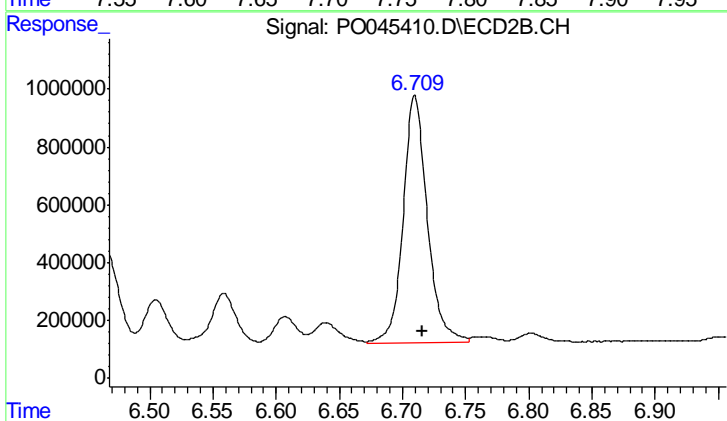
#33 AR-1260-3

R.T.: 6.217 min  
 Delta R.T.: -0.005 min  
 Response: 5408745  
 Conc: 285.76 ng/ml



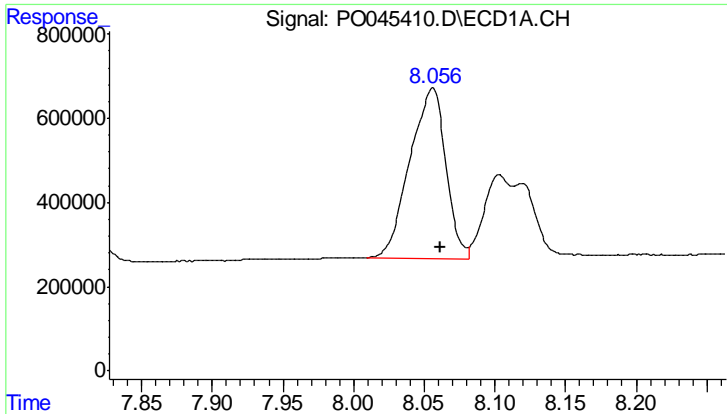
#34 AR-1260-4

R.T.: 7.773 min  
 Delta R.T.: -0.006 min  
 Response: 10925136  
 Conc: 384.57 ng/ml



#34 AR-1260-4

R.T.: 6.710 min  
 Delta R.T.: -0.006 min  
 Response: 11414223  
 Conc: 289.91 ng/ml



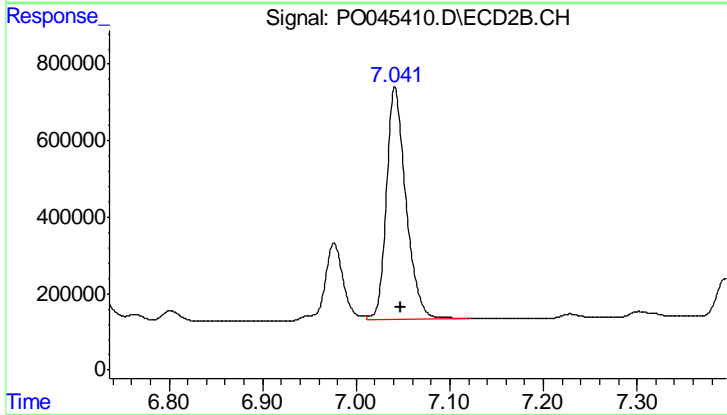
#35 AR-1260-5

R.T.: 8.056 min  
 Delta R.T.: -0.006 min  
 Response: 7195405  
 Conc: 430.11 ng/ml

Instrument :  
 ECD\_O  
 ClientSampleId :  
 BRICKWALL-DRUM

Manual Integrations  
 APPROVED

UGO  
 6/4/2018 5:23:32 PM



#35 AR-1260-5

R.T.: 7.041 min  
 Delta R.T.: -0.006 min  
 Response: 8801506  
 Conc: 319.78 ng/ml