

Data Path : P:\HPCHEM1\ECD O\Data\PO060418\  
 Data File : PO045423.D  
 Signal(s) : Signal #1: ECD1A.CH Signal #2: ECD2B.CH  
 Acq On : 03 Jun 2018 16:53  
 Operator : SM/UA  
 Sample : J3110-02 10X  
 Misc :  
 ALS Vial : 21 Sample Multiplier: 1

Instrument :  
 ECD\_O  
 ClientSampleId :  
 SB-01(7-8)

Integration File signal 1: autoint1.e  
 Integration File signal 2: autoint2.e  
 Quant Time: Jun 04 16:24:19 2018  
 Quant Method : P:\HPCHEM1\ECD\_O\methods\PO053018.M  
 Quant Title : GC EXTRACTABLES  
 QLast Update : Thu May 31 04:53:22 2018  
 Response via : Initial Calibration  
 Integrator: ChemStation 6890 Scale Mode: Small noise peaks clipped

Volume Inj. : 2 µl  
 Signal #1 Phase : ZB-MR1 Signal #2 Phase: ZB-MR2  
 Signal #1 Info : 30Mx0.32mmx 0.50µ Signal #2 Info : 30M x 0.32mm x 0.25µm

| Compound                    | RT#1  | RT#2  | Resp#1   | Resp#2   | ng/ml    | ng/ml      |
|-----------------------------|-------|-------|----------|----------|----------|------------|
| -----                       |       |       |          |          |          |            |
| System Monitoring Compounds |       |       |          |          |          |            |
| 1) SA Tetrachlo...          | 3.996 | 3.273 | 696970   | 532275   | 3.337    | 1.920 #    |
| 2) SA Decachlor...          | 9.275 | 7.993 | 491765   | 518193   | 2.141    | 1.839      |
| Target Compounds            |       |       |          |          |          |            |
| 21) L5 AR-1248-1            | 5.566 | 4.706 | 26121817 | 32465529 | 3683.058 | 3058.813   |
| 22) L5 AR-1248-2            | 5.702 | 4.843 | 28477756 | 35037404 | 4574.022 | 3405.035 # |
| 23) L5 AR-1248-3            | 5.954 | 5.038 | 22424783 | 51310666 | 2586.425 | 3190.915   |
| 24) L5 AR-1248-4            | 5.990 | 5.077 | 36051327 | 45218938 | 4072.418 | 3374.958   |
| 25) L5 AR-1248-5            | 6.181 | 5.571 | 19521217 | 62881430 | 3495.718 | 8739.905 # |
| 31) L7 AR-1260-1            | 6.654 | 5.685 | 53660166 | 75776831 | 4632.605 | 4629.566   |
| 32) L7 AR-1260-2            | 6.903 | 5.872 | 72835735 | 91160476 | 4786.561 | 4314.776   |
| 33) L7 AR-1260-3            | 7.253 | 6.217 | 56452820 | 81884224 | 4446.655 | 4326.223   |
| 34) L7 AR-1260-4            | 7.774 | 6.711 | 133.7E6  | 179.2E6  | 4707.923 | 4552.283   |
| 35) L7 AR-1260-5            | 8.057 | 7.043 | 71496144 | 117.9E6  | 4273.685 | 4282.262   |
| -----                       |       |       |          |          |          |            |

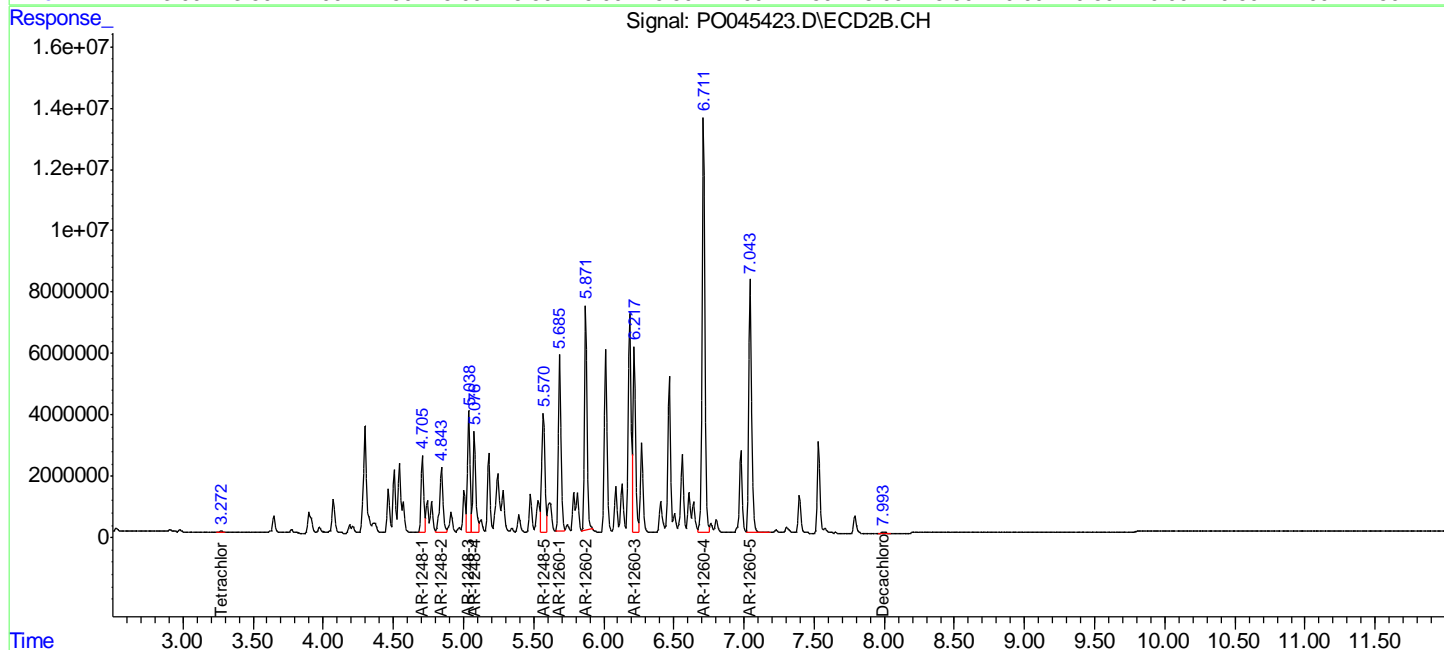
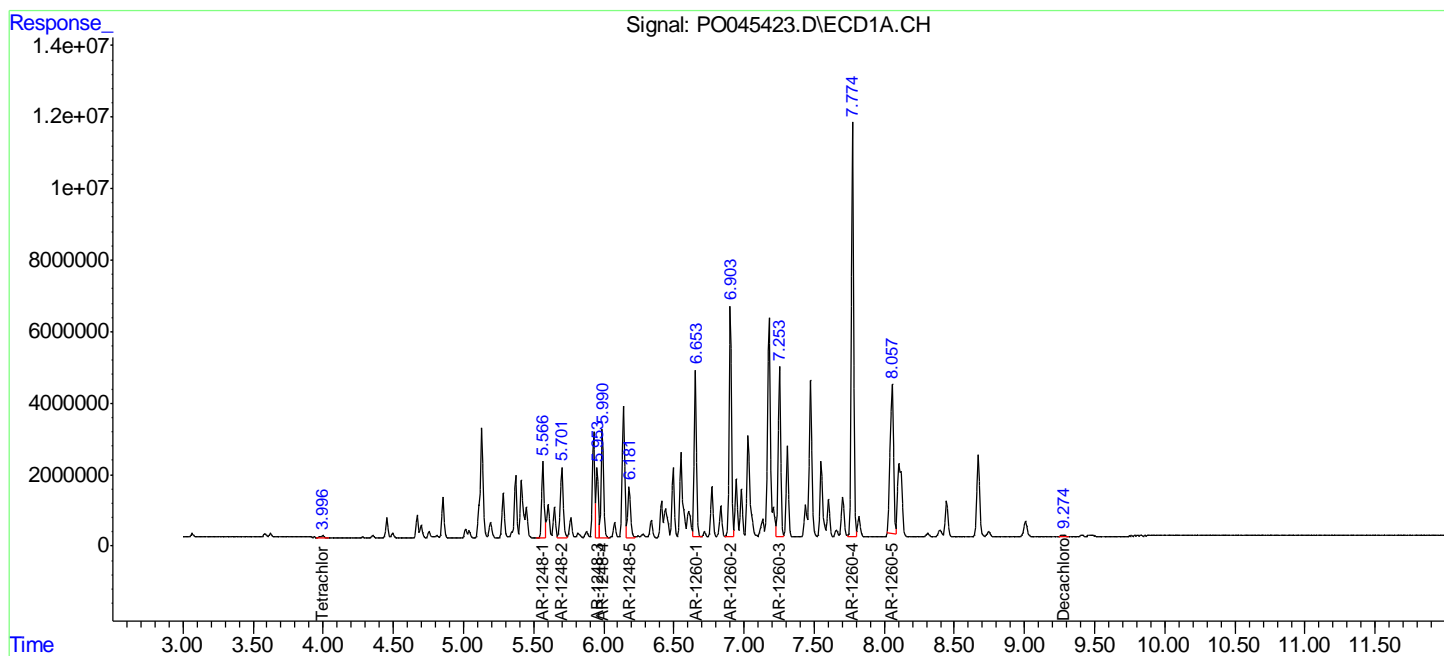
(f)=RT Delta > 1/2 Window (#)=Amounts differ by > 25% (m)=manual int.

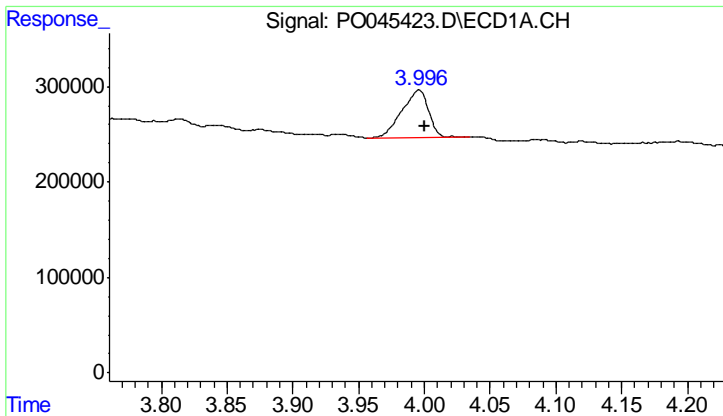
Data Path : P:\HPCHEM1\ECD O\Data\PO060418\  
 Data File : PO045423.D  
 Signal(s) : Signal #1: ECD1A.CH Signal #2: ECD2B.CH  
 Acq On : 03 Jun 2018 16:53  
 Operator : SM/UA  
 Sample : J3110-02 10X  
 Misc :  
 ALS Vial : 21 Sample Multiplier: 1

Instrument :  
 ECD\_O  
 ClientSampled :  
 SB-01(7-8)

Integration File signal 1: autoint1.e  
 Integration File signal 2: autoint2.e  
 Quant Time: Jun 04 16:24:19 2018  
 Quant Method : P:\HPCHEM1\ECD\_O\methods\PO053018.M  
 Quant Title : GC EXTRACTABLES  
 QLast Update : Thu May 31 04:53:22 2018  
 Response via : Initial Calibration  
 Integrator: ChemStation 6890 Scale Mode: Small noise peaks clipped

Volume Inj. : 2 ul  
 Signal #1 Phase : ZB-MR1 Signal #2 Phase: ZB-MR2  
 Signal #1 Info : 30Mx0.32mmx 0.50µ Signal #2 Info : 30M x 0.32mm x 0.25µm

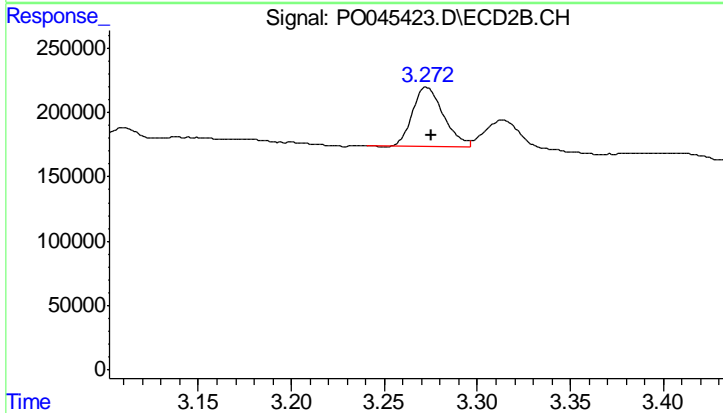




#1 Tetrachloro-m-xylene

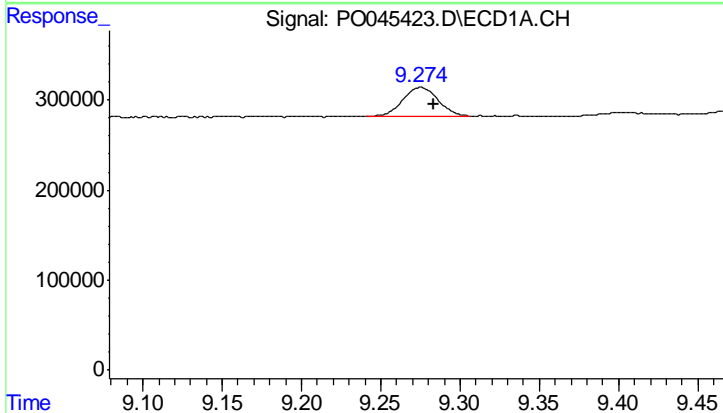
R.T.: 3.996 min  
 Delta R.T.: -0.004 min  
 Response: 696970  
 Conc: 3.34 ng/ml

Instrument :  
 ECD\_O  
 ClientSampleId :  
 SB-01(7-8)



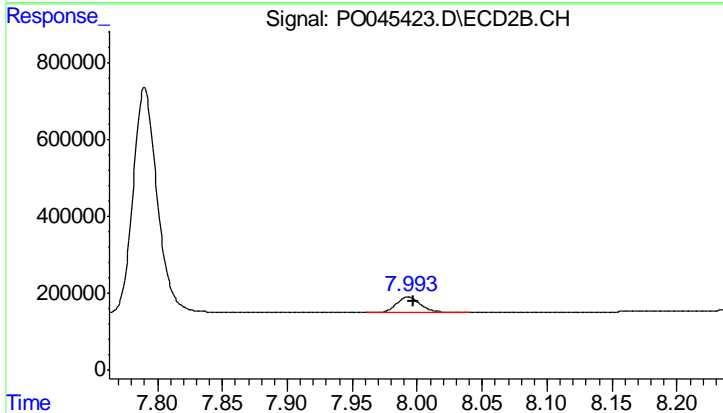
#1 Tetrachloro-m-xylene

R.T.: 3.273 min  
 Delta R.T.: -0.002 min  
 Response: 532275  
 Conc: 1.92 ng/ml



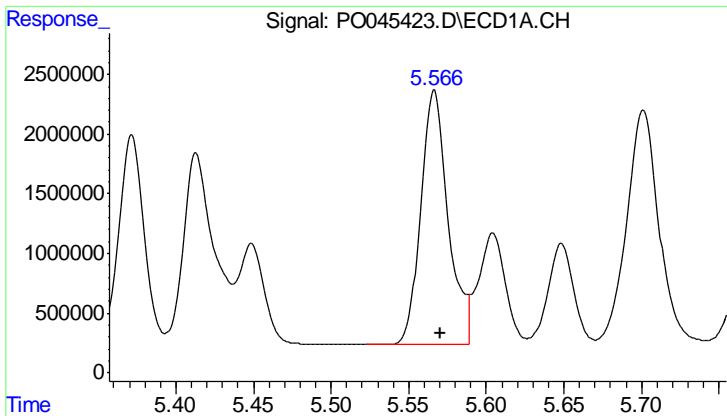
#2 Decachlorobiphenyl

R.T.: 9.275 min  
 Delta R.T.: -0.008 min  
 Response: 491765  
 Conc: 2.14 ng/ml



#2 Decachlorobiphenyl

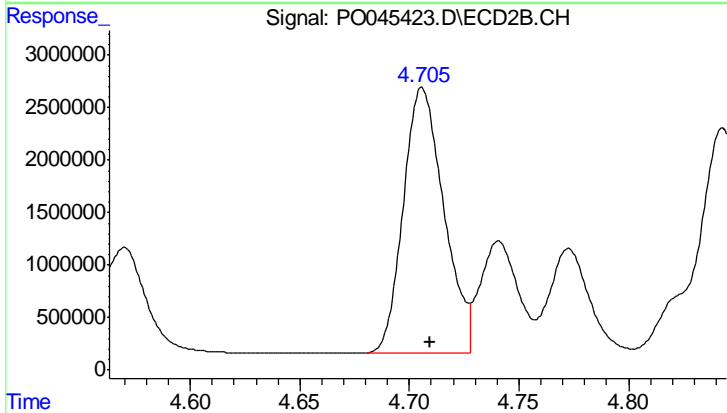
R.T.: 7.993 min  
 Delta R.T.: -0.004 min  
 Response: 518193  
 Conc: 1.84 ng/ml



#21 AR-1248-1

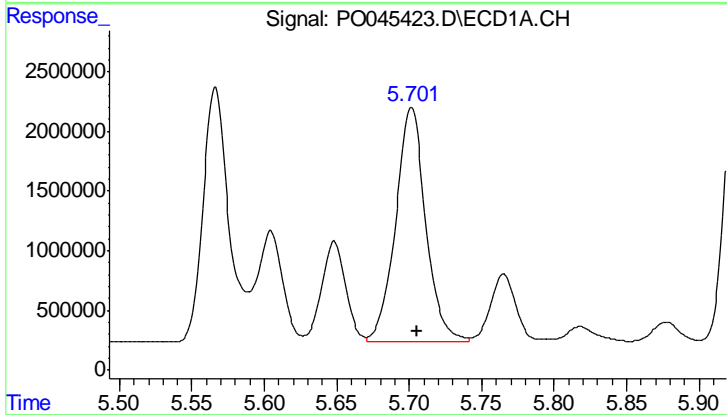
R.T.: 5.566 min  
 Delta R.T.: -0.004 min  
 Response: 26121817  
 Conc: 3683.06 ng/ml

Instrument :  
 ECD\_O  
 ClientSampleId :  
 SB-01(7-8)



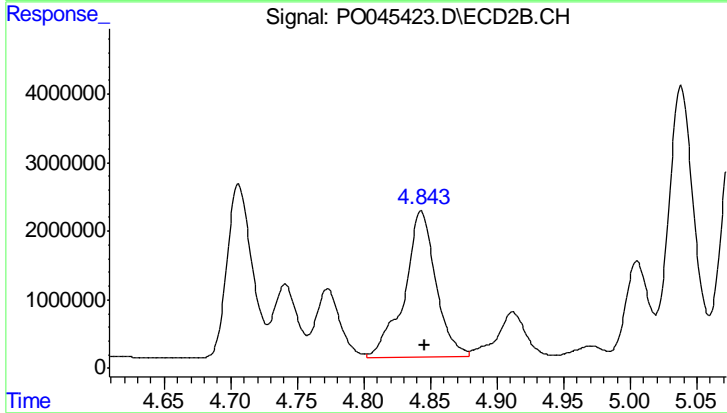
#21 AR-1248-1

R.T.: 4.706 min  
 Delta R.T.: -0.003 min  
 Response: 32465529  
 Conc: 3058.81 ng/ml



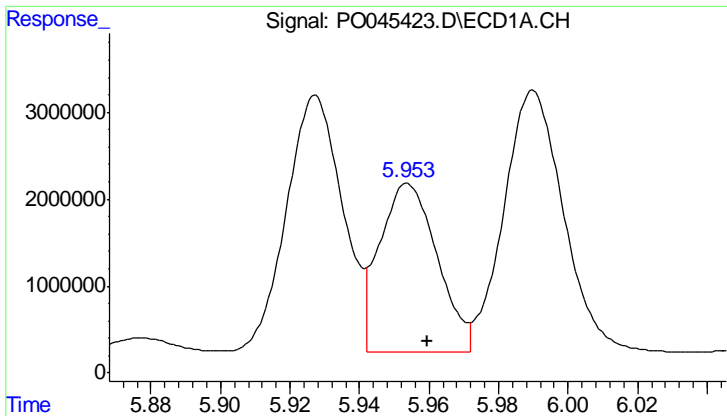
#22 AR-1248-2

R.T.: 5.702 min  
 Delta R.T.: -0.004 min  
 Response: 28477756  
 Conc: 4574.02 ng/ml



#22 AR-1248-2

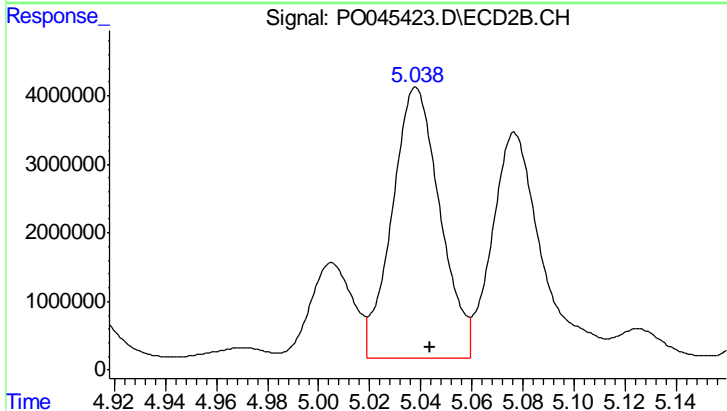
R.T.: 4.843 min  
 Delta R.T.: -0.003 min  
 Response: 35037404  
 Conc: 3405.04 ng/ml



#23 AR-1248-3

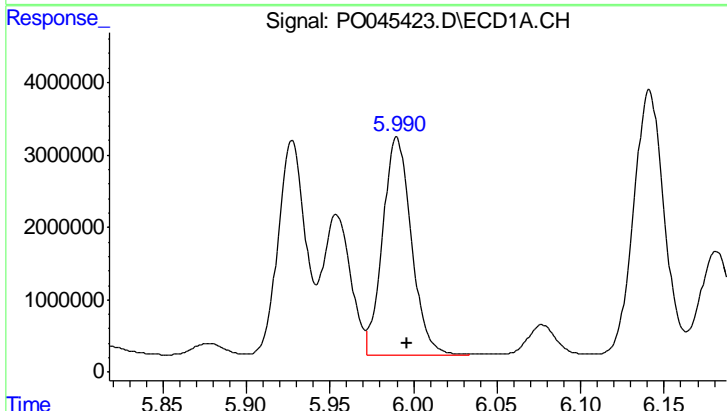
R.T.: 5.954 min  
 Delta R.T.: -0.006 min  
 Response: 22424783  
 Conc: 2586.43 ng/ml

Instrument :  
 ECD\_O  
 ClientSampled :  
 SB-01(7-8)



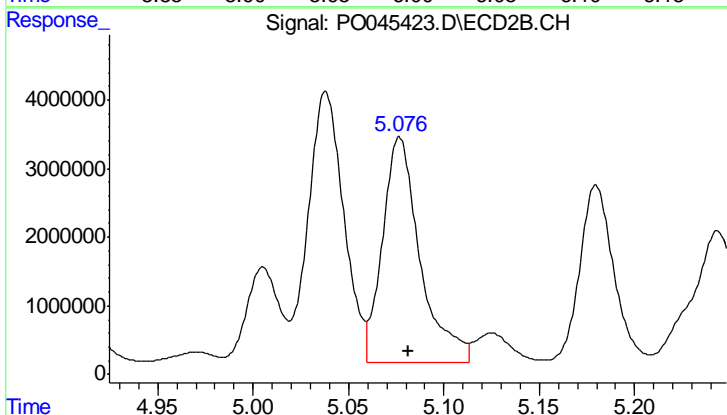
#23 AR-1248-3

R.T.: 5.038 min  
 Delta R.T.: -0.006 min  
 Response: 51310666  
 Conc: 3190.91 ng/ml



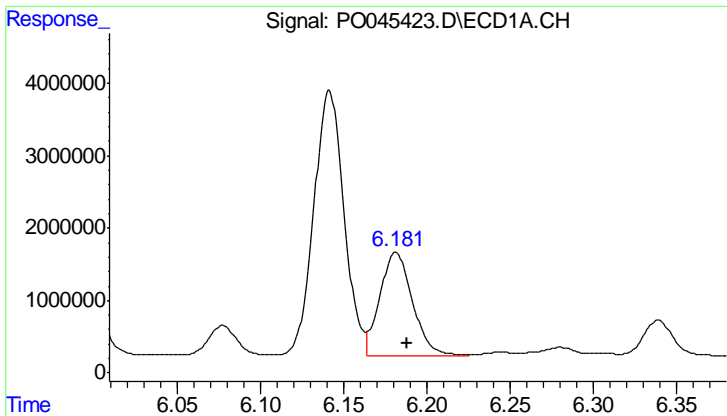
#24 AR-1248-4

R.T.: 5.990 min  
 Delta R.T.: -0.006 min  
 Response: 36051327  
 Conc: 4072.42 ng/ml



#24 AR-1248-4

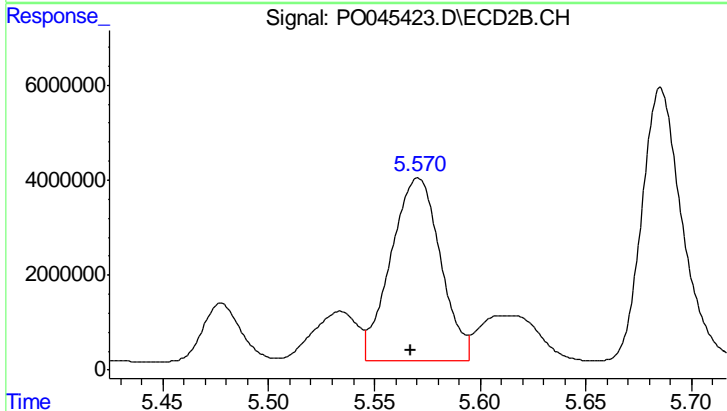
R.T.: 5.077 min  
 Delta R.T.: -0.005 min  
 Response: 45218938  
 Conc: 3374.96 ng/ml



#25 AR-1248-5

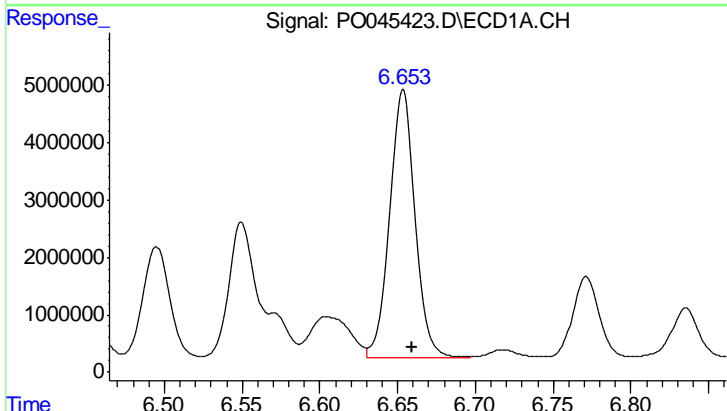
R.T.: 6.181 min  
 Delta R.T.: -0.006 min  
 Response: 19521217  
 Conc: 3495.72 ng/ml

Instrument :  
 ECD\_O  
 ClientSampleId :  
 SB-01(7-8)



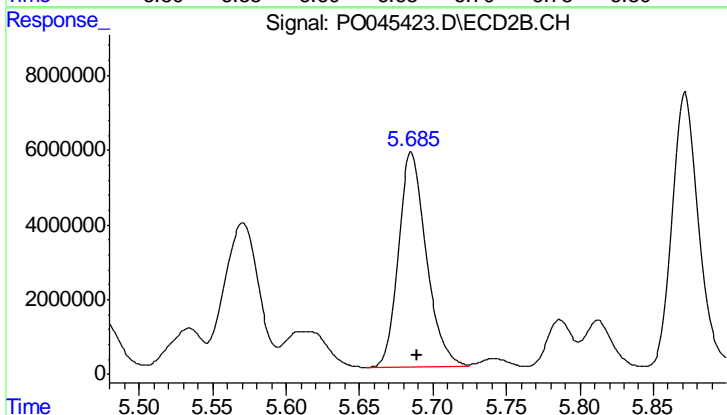
#25 AR-1248-5

R.T.: 5.571 min  
 Delta R.T.: 0.003 min  
 Response: 62881430  
 Conc: 8739.90 ng/ml



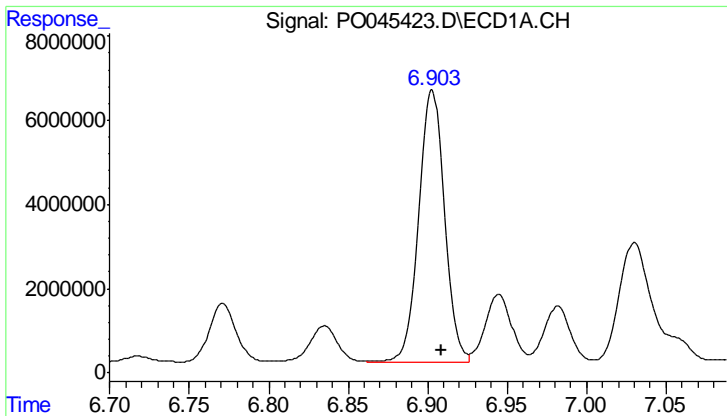
#31 AR-1260-1

R.T.: 6.654 min  
 Delta R.T.: -0.006 min  
 Response: 53660166  
 Conc: 4632.60 ng/ml



#31 AR-1260-1

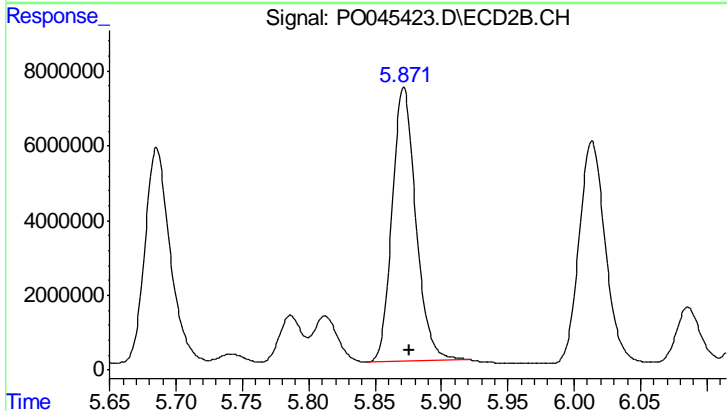
R.T.: 5.685 min  
 Delta R.T.: -0.004 min  
 Response: 75776831  
 Conc: 4629.57 ng/ml



#32 AR-1260-2

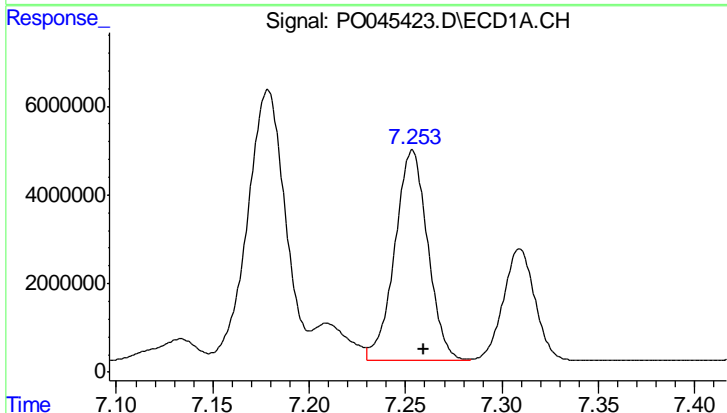
R.T.: 6.903 min  
 Delta R.T.: -0.006 min  
 Response: 72835735  
 Conc: 4786.56 ng/ml

Instrument :  
 ECD\_O  
 ClientSampleId :  
 SB-01(7-8)



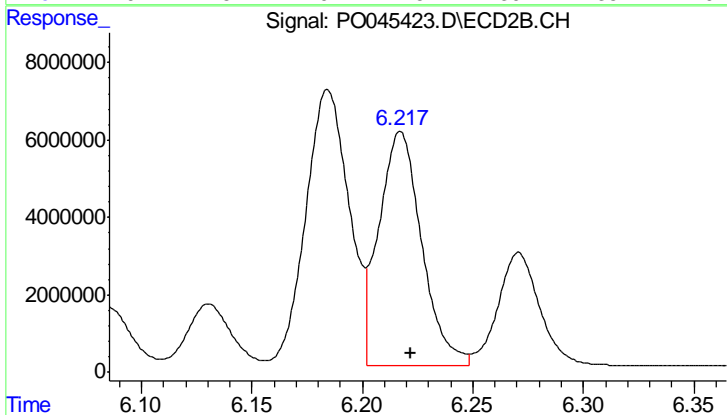
#32 AR-1260-2

R.T.: 5.872 min  
 Delta R.T.: -0.005 min  
 Response: 91160476  
 Conc: 4314.78 ng/ml



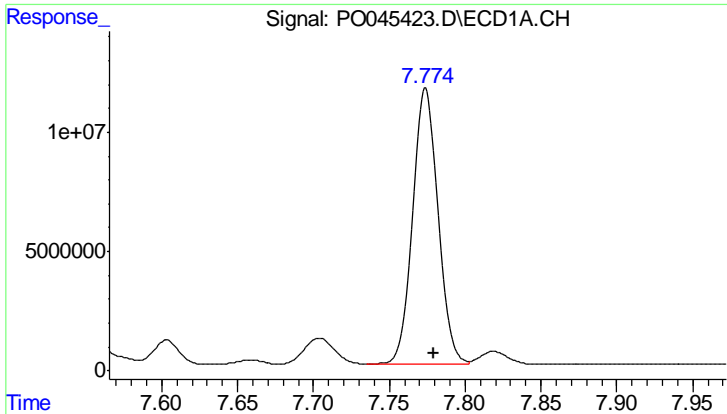
#33 AR-1260-3

R.T.: 7.253 min  
 Delta R.T.: -0.006 min  
 Response: 56452820  
 Conc: 4446.65 ng/ml



#33 AR-1260-3

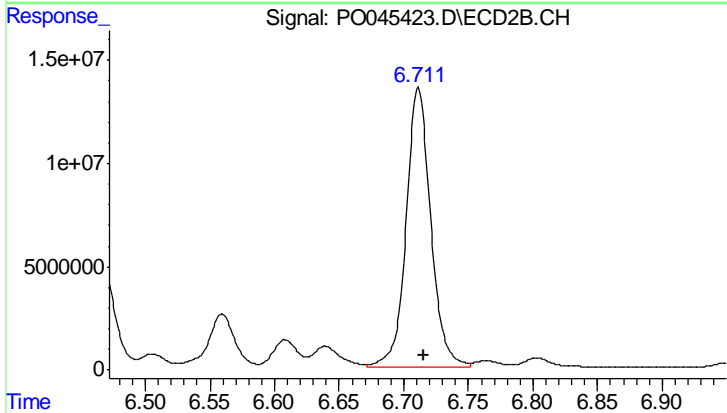
R.T.: 6.217 min  
 Delta R.T.: -0.005 min  
 Response: 81884224  
 Conc: 4326.22 ng/ml



#34 AR-1260-4

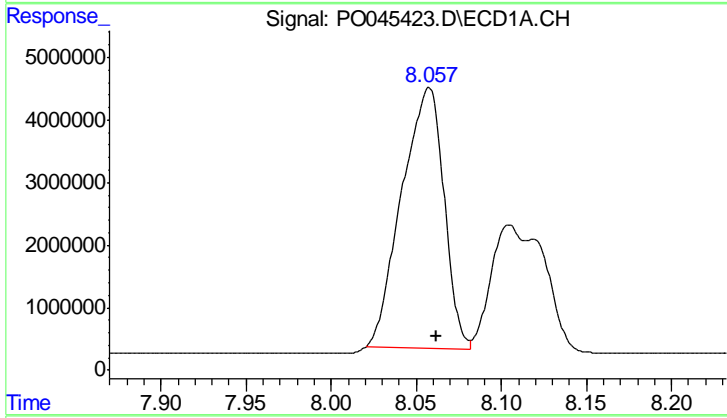
R.T.: 7.774 min  
 Delta R.T.: -0.006 min  
 Response: 133745009  
 Conc: 4707.92 ng/ml

Instrument :  
 ECD\_O  
 ClientSampleId :  
 SB-01(7-8)



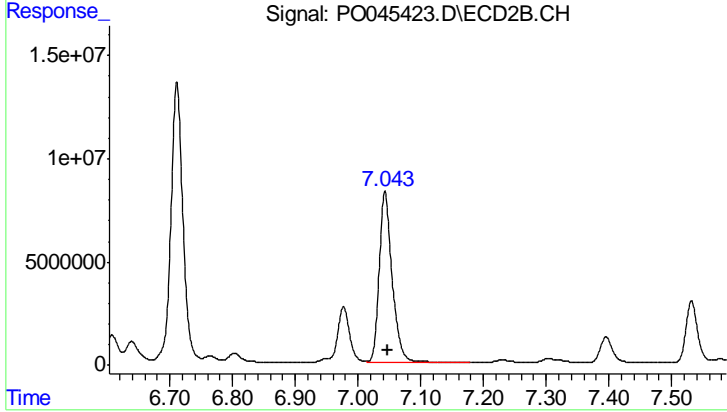
#34 AR-1260-4

R.T.: 6.711 min  
 Delta R.T.: -0.005 min  
 Response: 179228739  
 Conc: 4552.28 ng/ml



#35 AR-1260-5

R.T.: 8.057 min  
 Delta R.T.: -0.004 min  
 Response: 71496144  
 Conc: 4273.68 ng/ml



#35 AR-1260-5

R.T.: 7.043 min  
 Delta R.T.: -0.005 min  
 Response: 117864234  
 Conc: 4282.26 ng/ml