

Data Path : P:\HPCHEM1\ECD\_O\Data\PO060518\  
 Data File : PO045490.D  
 Signal(s) : Signal #1: ECD1A.CH Signal #2: ECD2B.CH  
 Acq On : 04 Jun 2018 22:36  
 Operator : SM/UA  
 Sample : AR1660CCC500  
 Misc :  
 ALS Vial : 3 Sample Multiplier: 1

Instrument :  
 ECD\_O  
 ClientSampleId :  
 AR1660CCC500

Integration File signal 1: autoint1.e  
 Integration File signal 2: autoint2.e  
 Quant Time: Jun 05 01:29:55 2018  
 Quant Method : P:\HPCHEM1\ECD\_O\methods\PO053018.M  
 Quant Title : GC EXTRACTABLES  
 QLast Update : Thu May 31 04:53:22 2018  
 Response via : Initial Calibration  
 Integrator: ChemStation 6890 Scale Mode: Small noise peaks clipped

Volume Inj. : 2 µl  
 Signal #1 Phase : ZB-MR1 Signal #2 Phase: ZB-MR2  
 Signal #1 Info : 30Mx0.32mmx 0.50µ Signal #2 Info : 30M x 0.32mm x 0.25µm

Compound	RT#1	RT#2	Resp#1	Resp#2	ng/ml	ng/ml
----------	------	------	--------	--------	-------	-------

System Monitoring Compounds

1) SA Tetrachlo...	3.996	3.272	13524839	19211827	64.751	69.284
2) SA Decachlor...	9.272	7.991	9727706	10747600	42.355	38.134

Target Compounds

3) L1 AR-1016-1	4.852	4.076	3284474	4621789	621.937	668.776
4) L1 AR-1016-2	5.189	4.505	4322303	3605593	647.741	611.467
5) L1 AR-1016-3	5.284	4.543	3350652	4319460	598.813	616.558
6) L1 AR-1016-4	5.699	4.705	3195975	4566629	550.416	613.403
7) L1 AR-1016-5	5.927	5.036	2749314	4715106	547.132	628.869
8) L2 AR-1221-1	4.195	3.471	417709	572876	105.310	109.486
9) L2 AR-1221-2	4.281	3.552	622834	839019	214.596	223.836
10) L2 AR-1221-3	4.352	3.622	2380252	3212438	253.255	259.883
11) L3 AR-1232-1	4.352	3.622	2380252	3212438	538.731	553.225
12) L3 AR-1232-2	5.109	4.298	3979472	15542618	1208.590	1230.475
13) L3 AR-1232-3	5.129	4.353	6936112	6102067	1215.659	1170.514
14) L3 AR-1232-4	5.189	4.464	4322303	4418331	1262.989	1159.126
15) L3 AR-1232-5	5.284	4.543	3350652	4319460	1246.881	1277.032
16) L4 AR-1242-1	4.669	4.076	3087053	4621789	773.514	825.744
17) L4 AR-1242-2	5.129	4.298	6936112	15542618	763.502	759.603
18) L4 AR-1242-3	5.284	4.464	3350652	4418331	753.306	718.885
19) L4 AR-1242-4	5.565	4.543	3031452	4319460	698.479	722.053
20) L4 AR-1242-5	5.699	4.705	3195975	4566629	659.785	699.877
21) L5 AR-1248-1	5.565	4.705	3031452	4566629	427.421	430.255
22) L5 AR-1248-2	5.699	4.842	3195975	4970290	513.329	483.027
23) L5 AR-1248-3	5.954	5.036	1148151	4715106	132.425	293.224 #
24) L5 AR-1248-4	5.991	5.079	984026	1385298	111.157	103.393
25) L5 AR-1248-5	6.137	5.572	2348191	5888367	420.497	818.426 #
26) L6 AR-1254-1	6.137	5.036	2348191	4715106	169.793	254.444 #
27) L6 AR-1254-2	6.411	5.179	389547	3086446	40.537	191.438 #
28) L6 AR-1254-3	6.494	5.572	1280691	5888367	81.281	228.503 #
29) L6 AR-1254-4	6.770	5.812	863232	2265422	66.096	113.764 #
30) L6 AR-1254-5	7.054	6.082	632492	977110	66.134	81.576
31) L7 AR-1260-1	6.651	5.684	5853395	8493397	505.337	518.902
32) L7 AR-1260-2	6.901	5.871	7339914	10223059	482.359	483.874
33) L7 AR-1260-3	7.252	6.215	5803632	8806113	457.138	465.257
34) L7 AR-1260-4	7.772	6.710	12126246	16322486	426.853	414.580
35) L7 AR-1260-5	8.055	7.042	6683620	11176469	399.514	406.065
36) L8 AR-1262-1	6.651	5.871	5853395	10223059	537.654	540.061
37) L8 AR-1262-2	6.901	6.012	7339914	9055476	533.607	493.454
38) L8 AR-1262-3	7.177	6.215	8066415	8806113	633.012	287.186 #

Data Path : P:\HPCHEM1\ECD\_O\Data\PO060518\  
 Data File : PO045490.D  
 Signal(s) : Signal #1: ECD1A.CH Signal #2: ECD2B.CH  
 Acq On : 04 Jun 2018 22:36  
 Operator : SM/UA  
 Sample : AR1660CCC500  
 Misc :  
 ALS Vial : 3 Sample Multiplier: 1

Instrument :  
 ECD\_O  
 ClientSampleId :  
 AR1660CCC500

Integration File signal 1: autoint1.e  
 Integration File signal 2: autoint2.e  
 Quant Time: Jun 05 01:29:55 2018  
 Quant Method : P:\HPCHEM1\ECD\_O\methods\PO053018.M  
 Quant Title : GC EXTRACTABLES  
 QLast Update : Thu May 31 04:53:22 2018  
 Response via : Initial Calibration  
 Integrator: ChemStation 6890 Scale Mode: Small noise peaks clipped

Volume Inj. : 2 µl  
 Signal #1 Phase : ZB-MR1 Signal #2 Phase: ZB-MR2  
 Signal #1 Info : 30Mx0.32mmx 0.50µ Signal #2 Info : 30M x 0.32mm x 0.25µm

	Compound	RT#1	RT#2	Resp#1	Resp#2	ng/ml	ng/ml
39)	L8 AR-1262-4	7.473	6.466	5639828	6824595	328.342	270.838
40)	L8 AR-1262-5	7.772	6.710	12126246	16322486	328.140	299.545
41)	L9 AR-1268-1	8.055	6.976	6683620	3834410	175.480	69.494 #
42)	L9 AR-1268-2	8.104	7.042	4270124	11176469	125.332	218.877 #
43)	L9 AR-1268-3	0.000	7.227	0	193975	N.D.	4.384 #
44)	L9 AR-1268-4	8.667	7.531	3104565	3619644	254.872	207.975
45)	L9 AR-1268-5	9.005	7.788	795449	887595	9.300	7.093

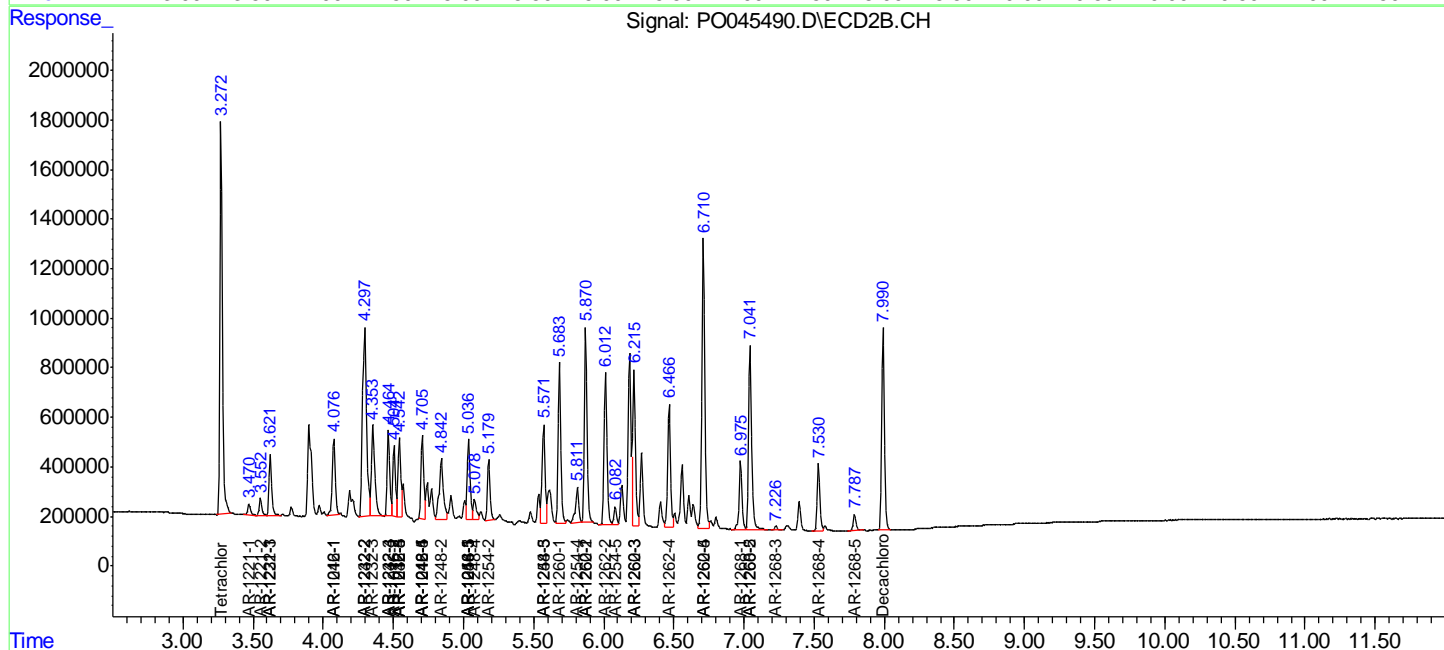
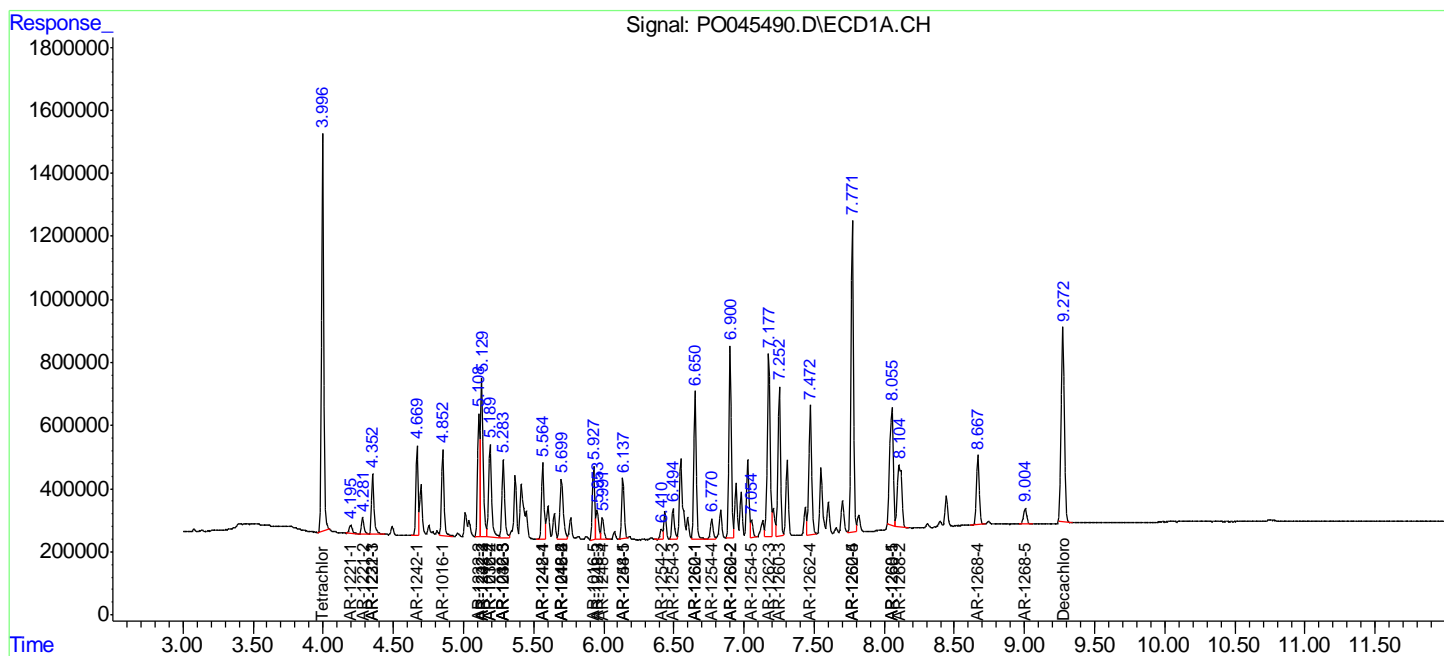
(f)=RT Delta > 1/2 Window (#)=Amounts differ by > 25% (m)=manual int.

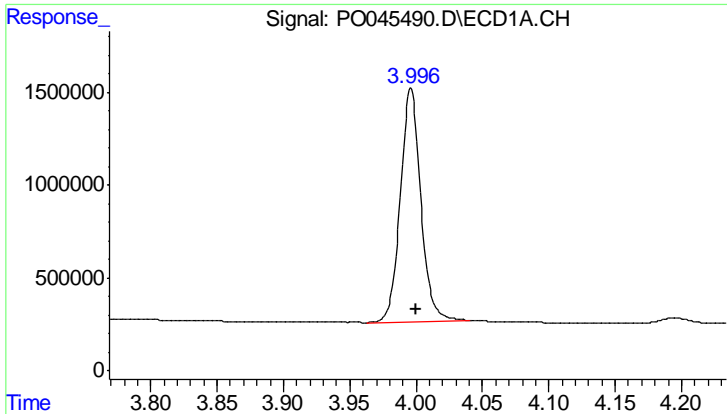
Data Path : P:\HPCHEM1\ECD\_O\Data\PO060518\  
 Data File : PO045490.D  
 Signal(s) : Signal #1: ECD1A.CH Signal #2: ECD2B.CH  
 Acq On : 04 Jun 2018 22:36  
 Operator : SM/UA  
 Sample : AR1660CCC500  
 Misc :  
 ALS Vial : 3 Sample Multiplier: 1

Instrument :  
 ECD\_O  
 ClientSampleId :  
 AR1660CCC500

Integration File signal 1: autoint1.e  
 Integration File signal 2: autoint2.e  
 Quant Time: Jun 05 01:29:55 2018  
 Quant Method : P:\HPCHEM1\ECD\_O\methods\PO053018.M  
 Quant Title : GC EXTRACTABLES  
 QLast Update : Thu May 31 04:53:22 2018  
 Response via : Initial Calibration  
 Integrator: ChemStation 6890 Scale Mode: Small noise peaks clipped

Volume Inj. : 2 µl  
 Signal #1 Phase : ZB-MR1 Signal #2 Phase: ZB-MR2  
 Signal #1 Info : 30Mx0.32mmx 0.50µ Signal #2 Info : 30M x 0.32mm x 0.25µm

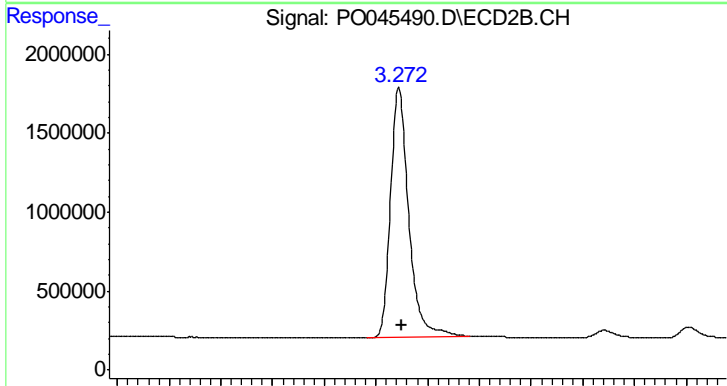




#1 Tetrachloro-m-xylene

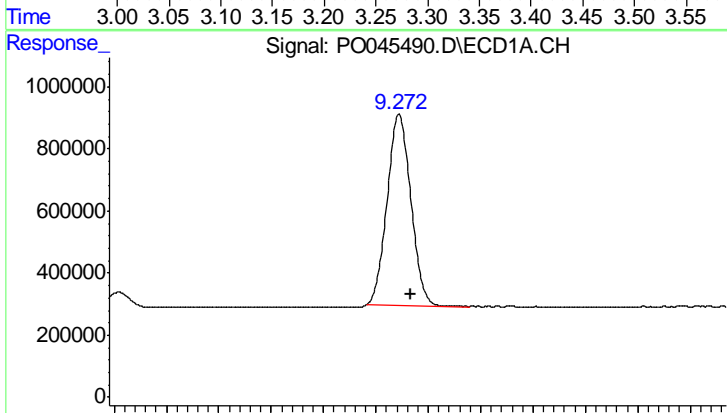
R.T.: 3.996 min  
 Delta R.T.: -0.004 min  
 Response: 13524839  
 Conc: 64.75 ng/ml

Instrument :  
 ECD\_O  
 ClientSampleId :  
 AR1660CCC500



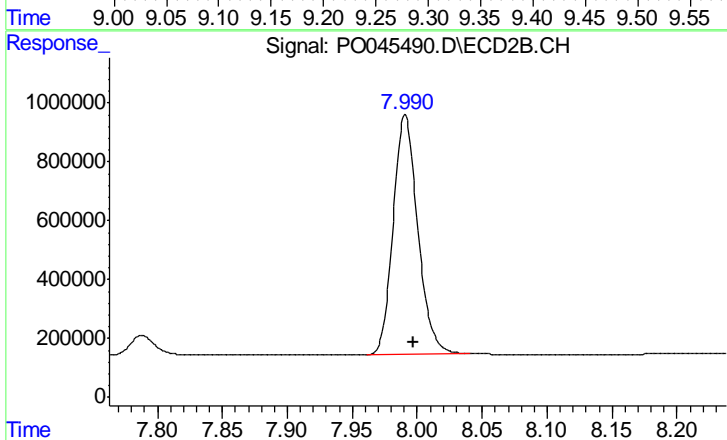
#1 Tetrachloro-m-xylene

R.T.: 3.272 min  
 Delta R.T.: -0.003 min  
 Response: 19211827  
 Conc: 69.28 ng/ml



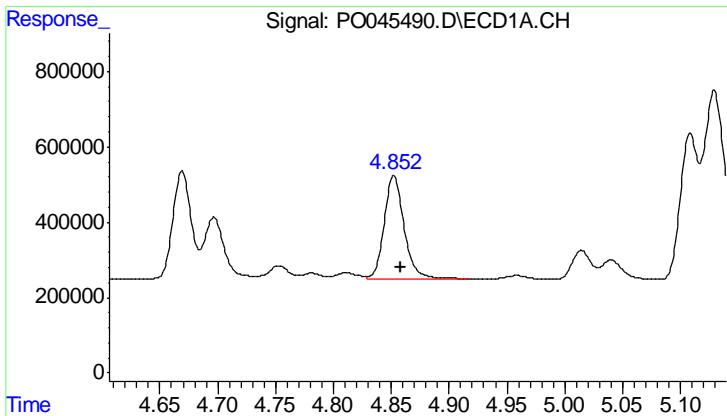
#2 Decachlorobiphenyl

R.T.: 9.272 min  
 Delta R.T.: -0.011 min  
 Response: 9727706  
 Conc: 42.36 ng/ml



#2 Decachlorobiphenyl

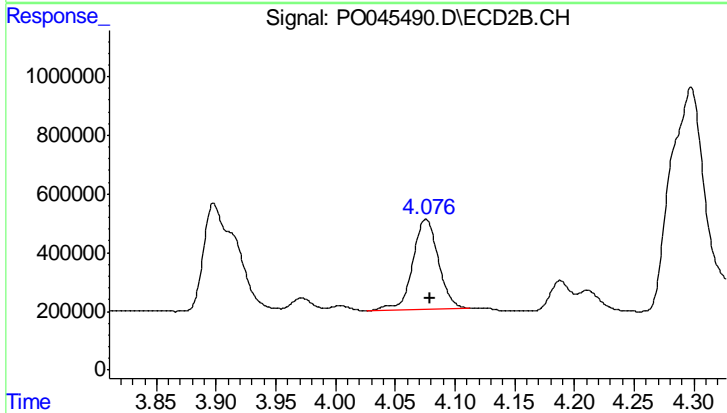
R.T.: 7.991 min  
 Delta R.T.: -0.007 min  
 Response: 10747600  
 Conc: 38.13 ng/ml



#3 AR-1016-1

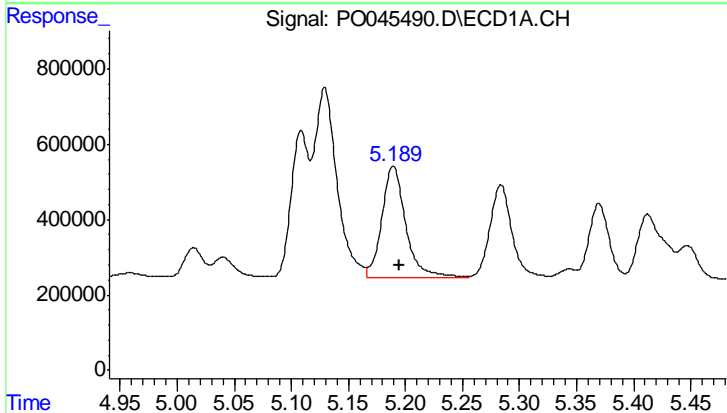
R.T.: 4.852 min  
 Delta R.T.: -0.006 min  
 Response: 3284474  
 Conc: 621.94 ng/ml

Instrument :  
 ECD\_O  
 ClientSampleId :  
 AR1660CCC500



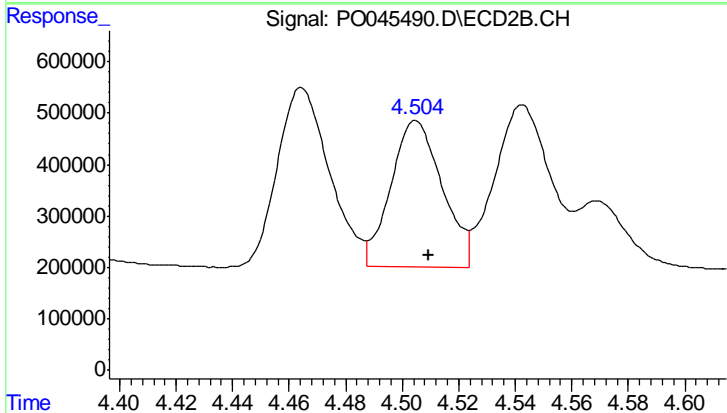
#3 AR-1016-1

R.T.: 4.076 min  
 Delta R.T.: -0.004 min  
 Response: 4621789  
 Conc: 668.78 ng/ml



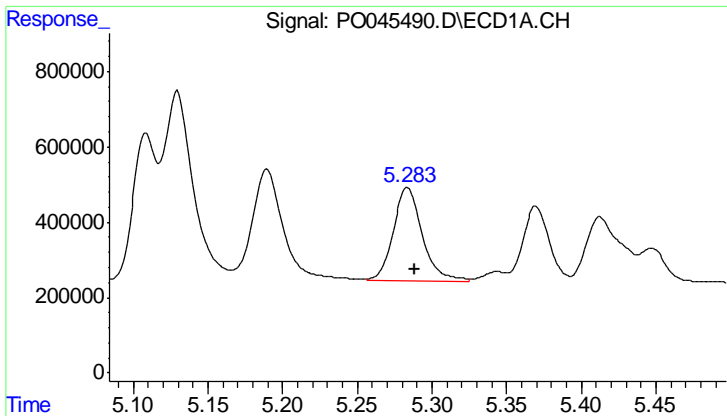
#4 AR-1016-2

R.T.: 5.189 min  
 Delta R.T.: -0.005 min  
 Response: 4322303  
 Conc: 647.74 ng/ml



#4 AR-1016-2

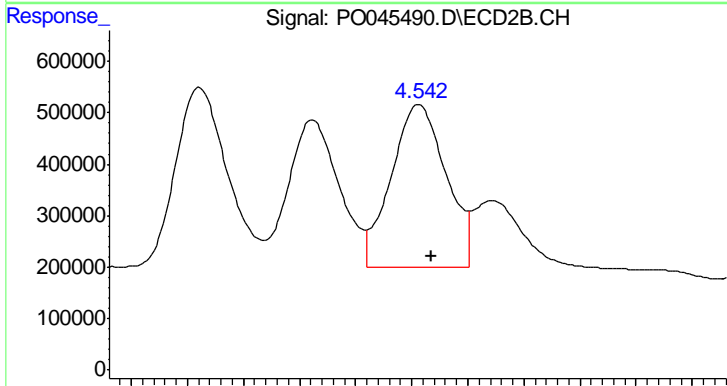
R.T.: 4.505 min  
 Delta R.T.: -0.004 min  
 Response: 3605593  
 Conc: 611.47 ng/ml



#5 AR-1016-3

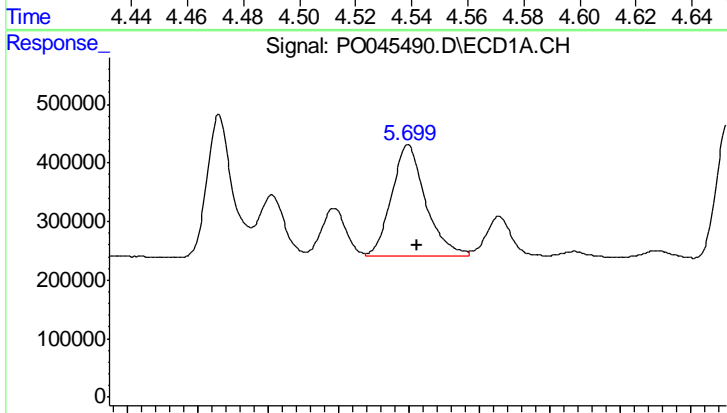
R.T.: 5.284 min  
 Delta R.T.: -0.005 min  
 Response: 3350652  
 Conc: 598.81 ng/ml

Instrument :  
 ECD\_O  
 ClientSampled :  
 AR1660CCC500



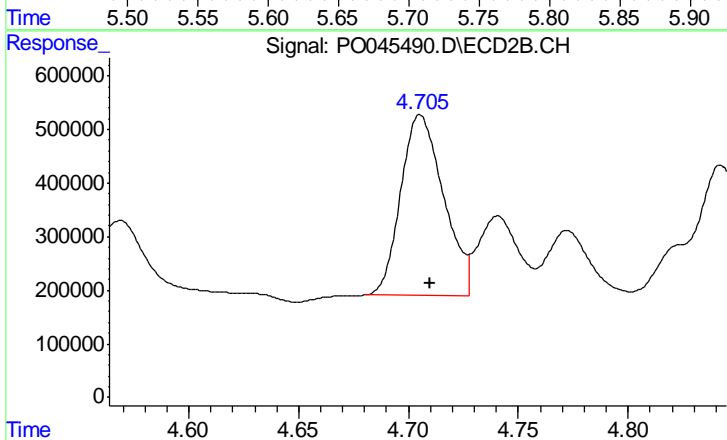
#5 AR-1016-3

R.T.: 4.543 min  
 Delta R.T.: -0.004 min  
 Response: 4319460  
 Conc: 616.56 ng/ml



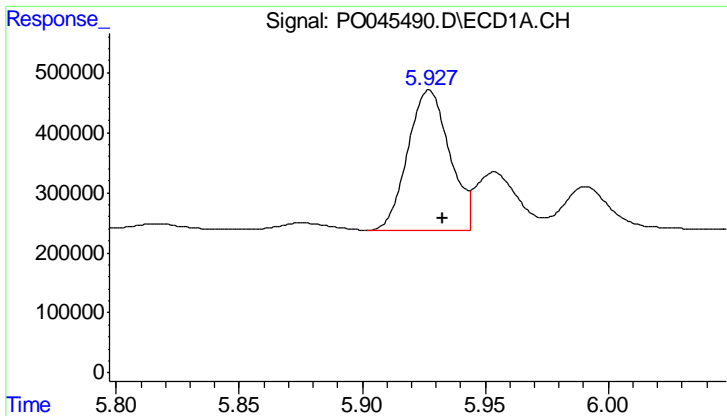
#6 AR-1016-4

R.T.: 5.699 min  
 Delta R.T.: -0.007 min  
 Response: 3195975  
 Conc: 550.42 ng/ml



#6 AR-1016-4

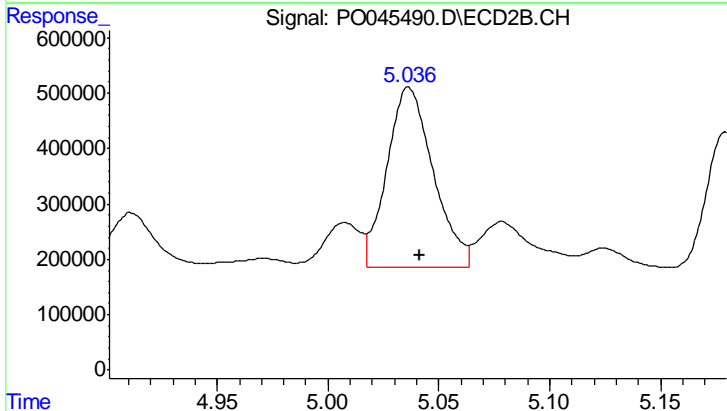
R.T.: 4.705 min  
 Delta R.T.: -0.004 min  
 Response: 4566629  
 Conc: 613.40 ng/ml



#7 AR-1016-5

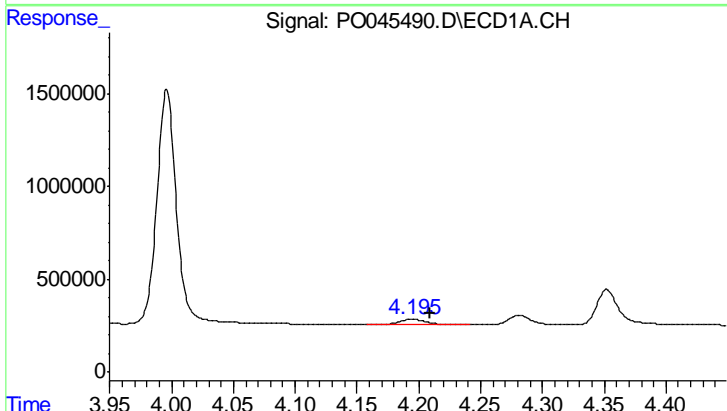
R.T.: 5.927 min  
 Delta R.T.: -0.006 min  
 Response: 2749314  
 Conc: 547.13 ng/ml

Instrument :  
 ECD\_O  
 ClientSampled :  
 AR1660CCC500



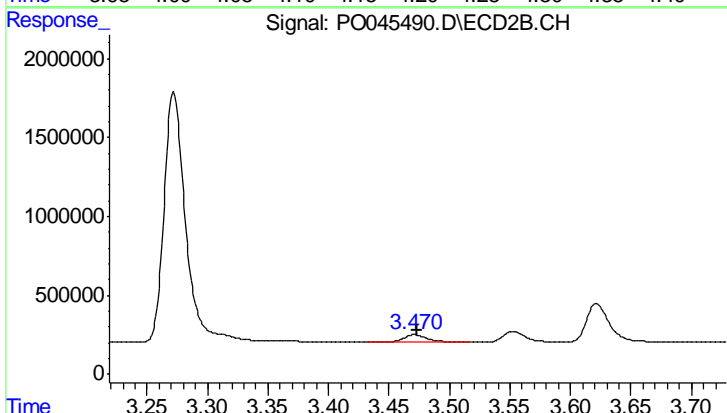
#7 AR-1016-5

R.T.: 5.036 min  
 Delta R.T.: -0.005 min  
 Response: 4715106  
 Conc: 628.87 ng/ml



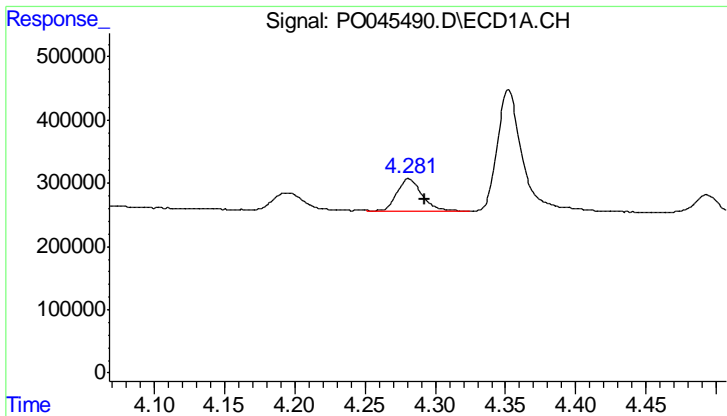
#8 AR-1221-1

R.T.: 4.195 min  
 Delta R.T.: -0.014 min  
 Response: 417709  
 Conc: 105.31 ng/ml



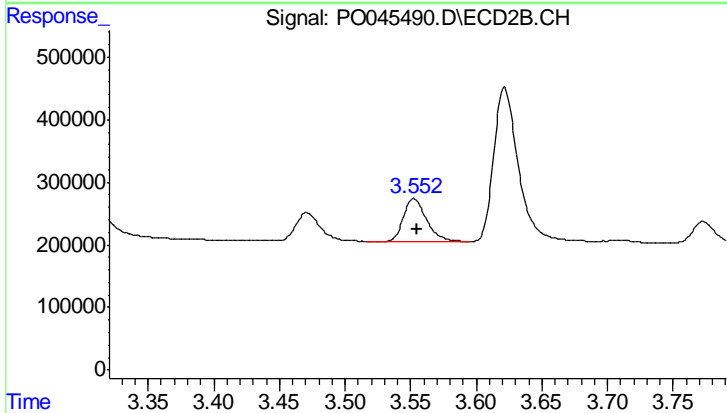
#8 AR-1221-1

R.T.: 3.471 min  
 Delta R.T.: -0.003 min  
 Response: 572876  
 Conc: 109.49 ng/ml

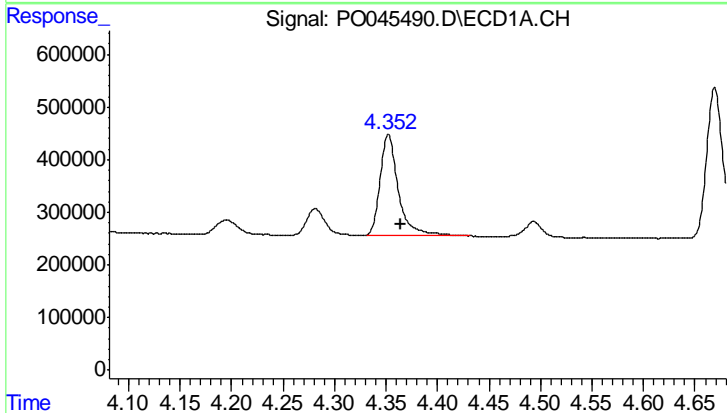


#9 AR-1221-2  
 R.T.: 4.281 min  
 Delta R.T.: -0.011 min  
 Response: 622834  
 Conc: 214.60 ng/ml

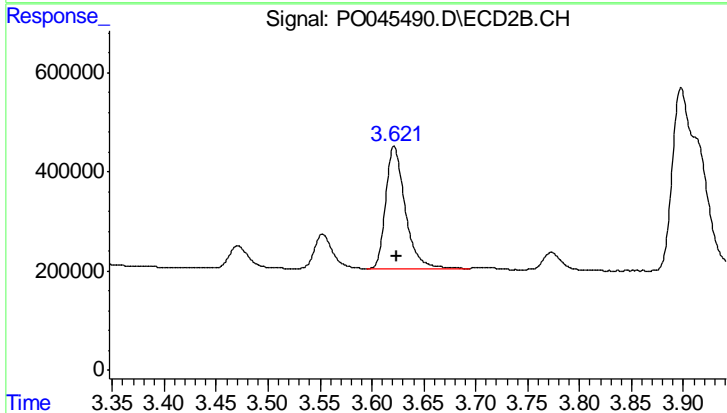
Instrument :  
 ECD\_O  
 ClientSampleId :  
 AR1660CCC500



#9 AR-1221-2  
 R.T.: 3.552 min  
 Delta R.T.: -0.002 min  
 Response: 839019  
 Conc: 223.84 ng/ml

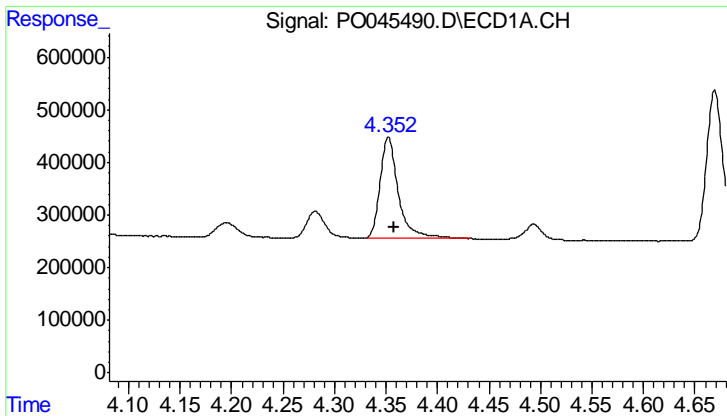


#10 AR-1221-3  
 R.T.: 4.352 min  
 Delta R.T.: -0.012 min  
 Response: 2380252  
 Conc: 253.26 ng/ml



#10 AR-1221-3  
 R.T.: 3.622 min  
 Delta R.T.: -0.003 min  
 Response: 3212438  
 Conc: 259.88 ng/ml

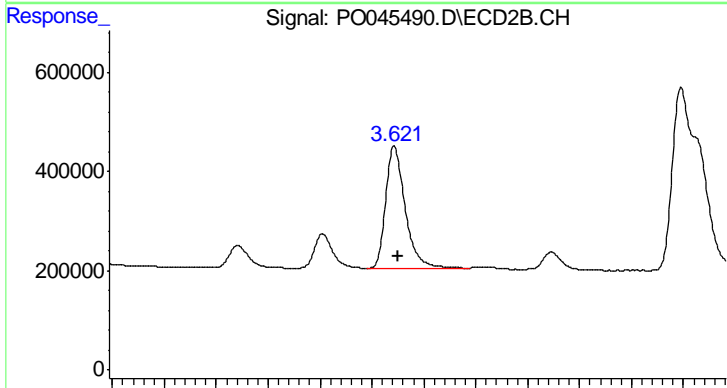




#11 AR-1232-1

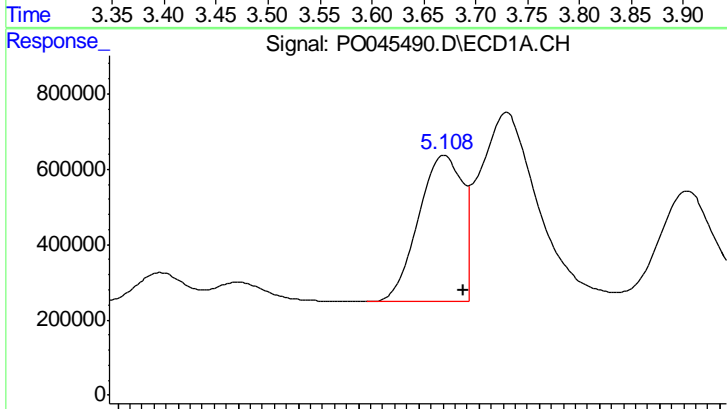
R.T.: 4.352 min  
 Delta R.T.: -0.005 min  
 Response: 2380252  
 Conc: 538.73 ng/ml

Instrument :  
 ECD\_O  
 ClientSampled :  
 AR1660CCC500



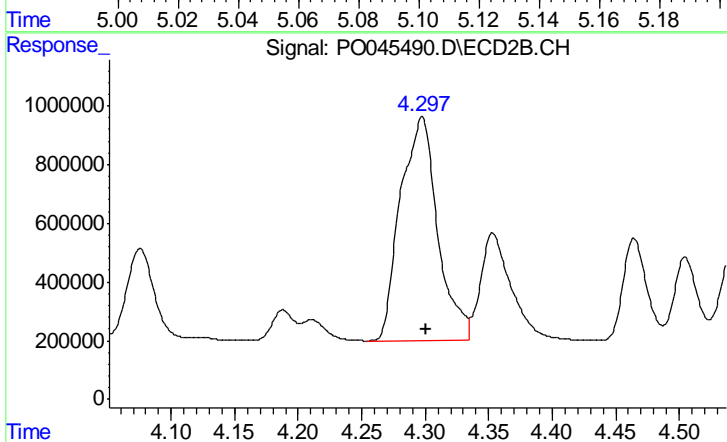
#11 AR-1232-1

R.T.: 3.622 min  
 Delta R.T.: -0.003 min  
 Response: 3212438  
 Conc: 553.22 ng/ml



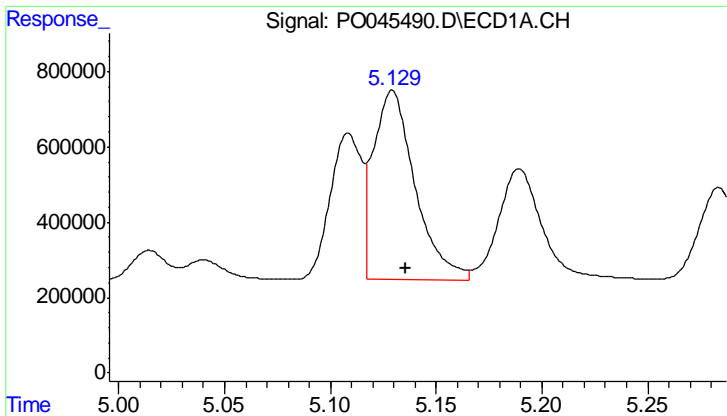
#12 AR-1232-2

R.T.: 5.109 min  
 Delta R.T.: -0.006 min  
 Response: 3979472  
 Conc: 1208.59 ng/ml



#12 AR-1232-2

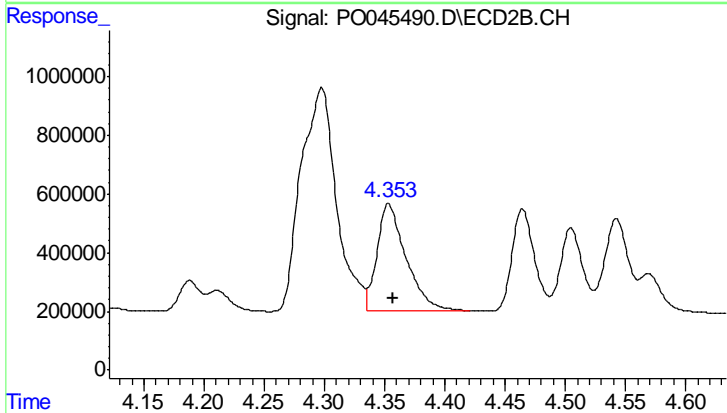
R.T.: 4.298 min  
 Delta R.T.: -0.004 min  
 Response: 15542618  
 Conc: 1230.47 ng/ml



#13 AR-1232-3

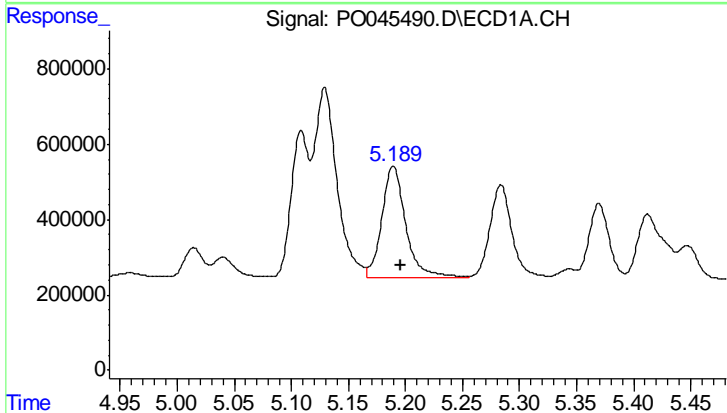
R.T.: 5.129 min  
 Delta R.T.: -0.006 min  
 Response: 6936112  
 Conc: 1215.66 ng/ml

Instrument :  
 ECD\_O  
 ClientSampled :  
 AR1660CCC500



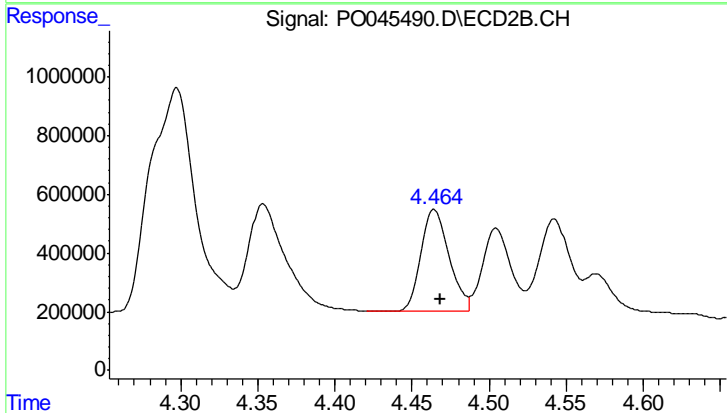
#13 AR-1232-3

R.T.: 4.353 min  
 Delta R.T.: -0.004 min  
 Response: 6102067  
 Conc: 1170.51 ng/ml



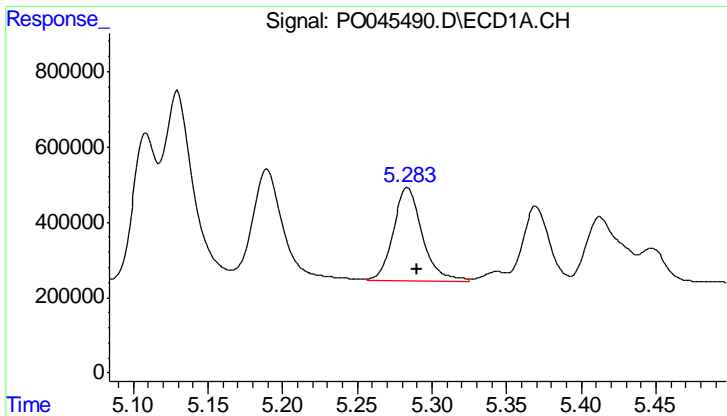
#14 AR-1232-4

R.T.: 5.189 min  
 Delta R.T.: -0.006 min  
 Response: 4322303  
 Conc: 1262.99 ng/ml



#14 AR-1232-4

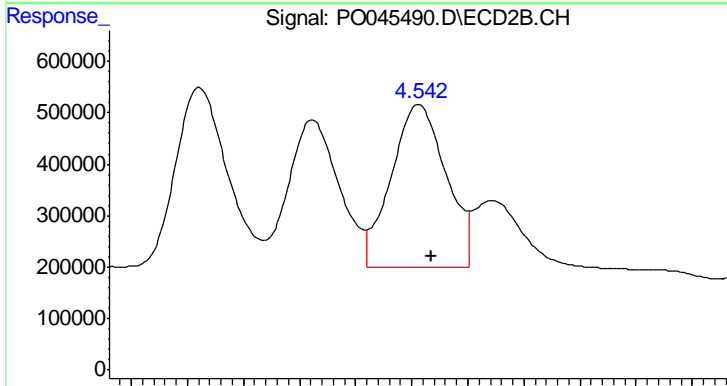
R.T.: 4.464 min  
 Delta R.T.: -0.004 min  
 Response: 4418331  
 Conc: 1159.13 ng/ml



#15 AR-1232-5

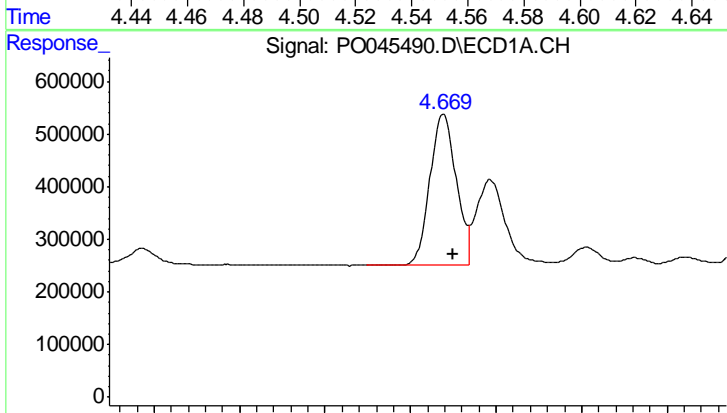
R.T.: 5.284 min  
 Delta R.T.: -0.006 min  
 Response: 3350652  
 Conc: 1246.88 ng/ml

Instrument :  
 ECD\_O  
 ClientSampled :  
 AR1660CCC500



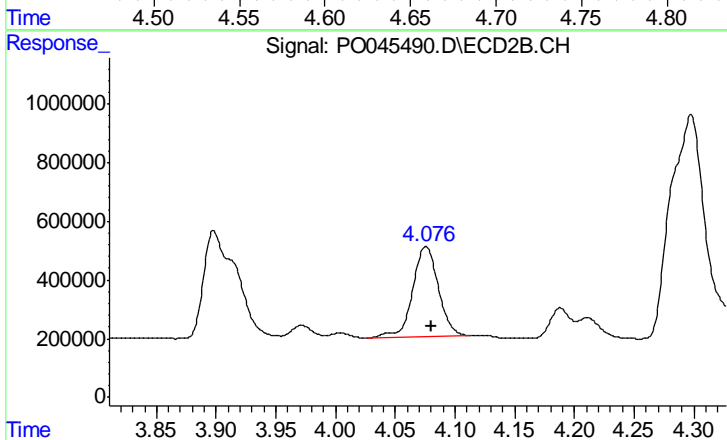
#15 AR-1232-5

R.T.: 4.543 min  
 Delta R.T.: -0.005 min  
 Response: 4319460  
 Conc: 1277.03 ng/ml



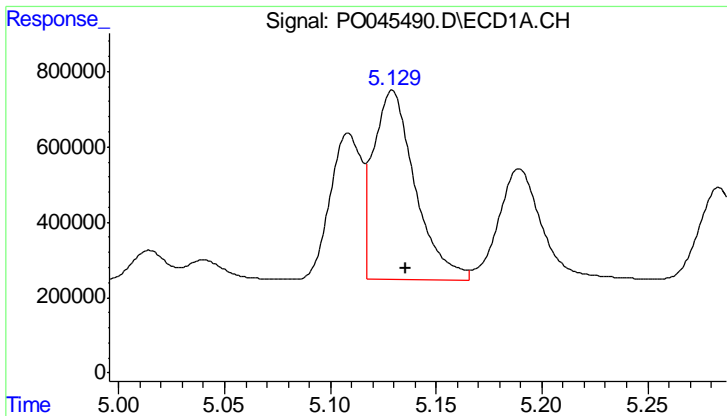
#16 AR-1242-1

R.T.: 4.669 min  
 Delta R.T.: -0.005 min  
 Response: 3087053  
 Conc: 773.51 ng/ml



#16 AR-1242-1

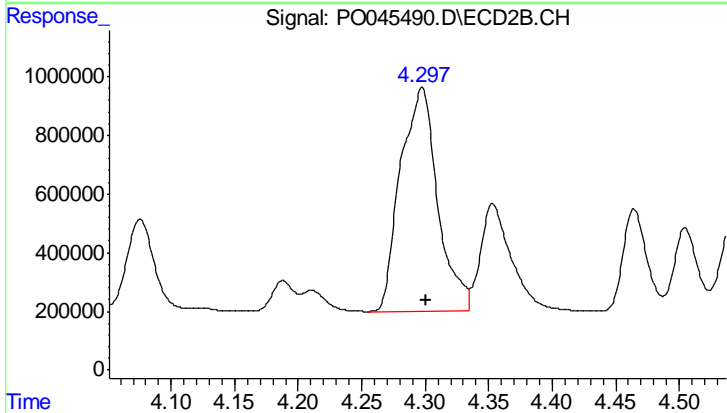
R.T.: 4.076 min  
 Delta R.T.: -0.004 min  
 Response: 4621789  
 Conc: 825.74 ng/ml



#17 AR-1242-2

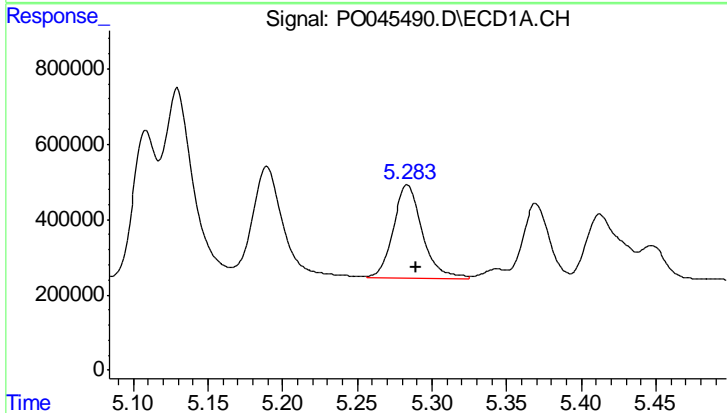
R.T.: 5.129 min  
 Delta R.T.: -0.007 min  
 Response: 6936112  
 Conc: 763.50 ng/ml

Instrument :  
 ECD\_O  
 ClientSampled :  
 AR1660CCC500



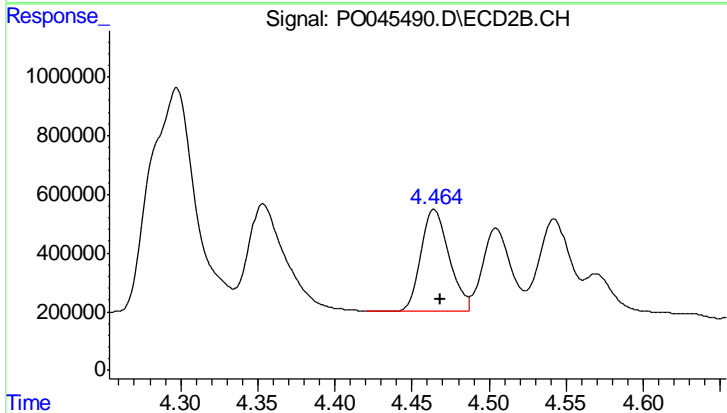
#17 AR-1242-2

R.T.: 4.298 min  
 Delta R.T.: -0.003 min  
 Response: 15542618  
 Conc: 759.60 ng/ml



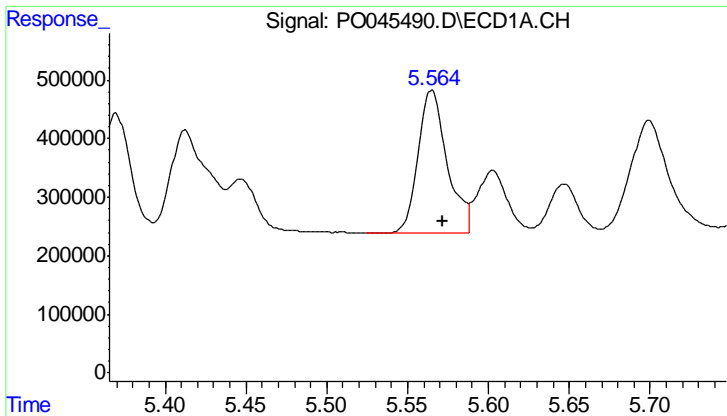
#18 AR-1242-3

R.T.: 5.284 min  
 Delta R.T.: -0.006 min  
 Response: 3350652  
 Conc: 753.31 ng/ml



#18 AR-1242-3

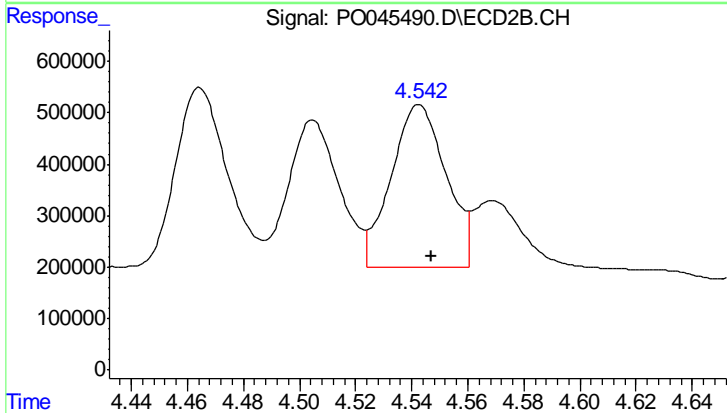
R.T.: 4.464 min  
 Delta R.T.: -0.004 min  
 Response: 4418331  
 Conc: 718.88 ng/ml



#19 AR-1242-4

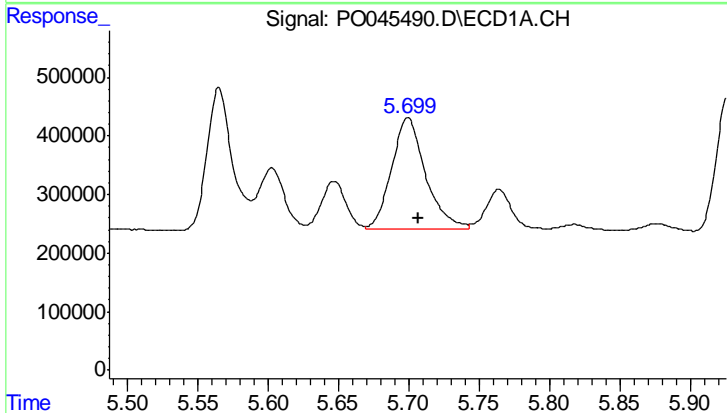
R.T.: 5.565 min  
 Delta R.T.: -0.007 min  
 Response: 3031452  
 Conc: 698.48 ng/ml

Instrument :  
 ECD\_O  
 ClientSampled :  
 AR1660CCC500



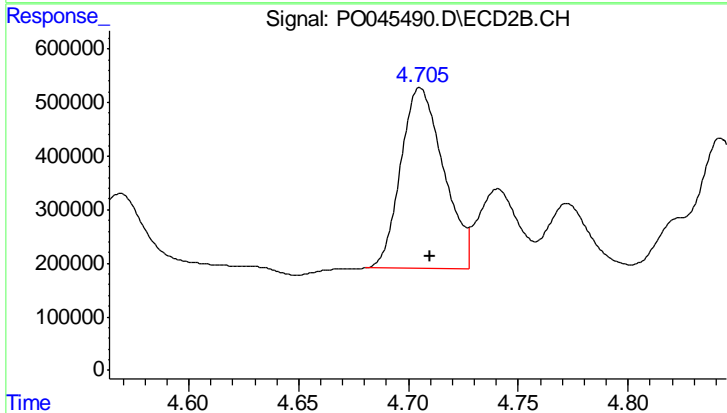
#19 AR-1242-4

R.T.: 4.543 min  
 Delta R.T.: -0.004 min  
 Response: 4319460  
 Conc: 722.05 ng/ml



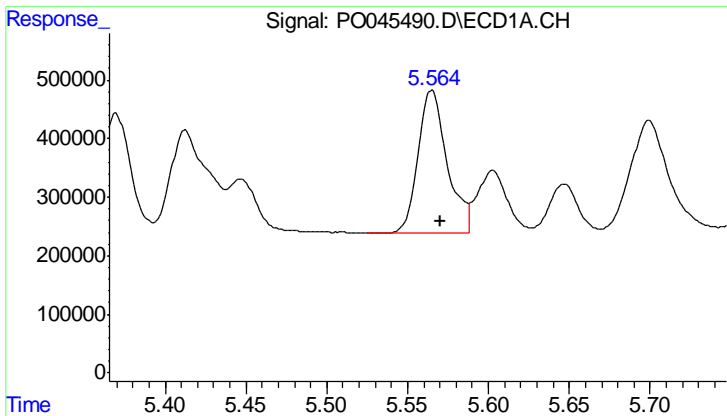
#20 AR-1242-5

R.T.: 5.699 min  
 Delta R.T.: -0.008 min  
 Response: 3195975  
 Conc: 659.79 ng/ml



#20 AR-1242-5

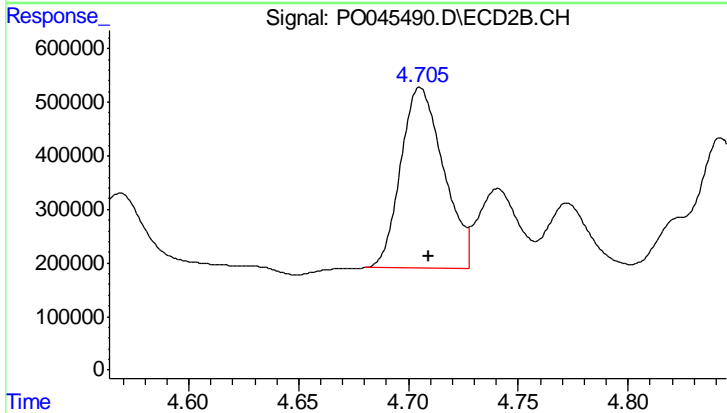
R.T.: 4.705 min  
 Delta R.T.: -0.004 min  
 Response: 4566629  
 Conc: 699.88 ng/ml



#21 AR-1248-1

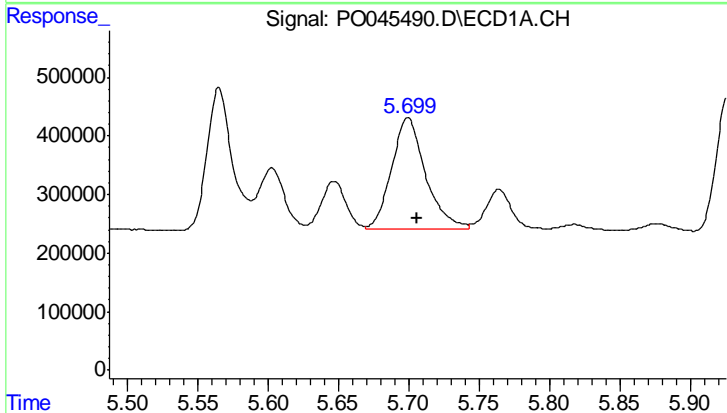
R.T.: 5.565 min  
 Delta R.T.: -0.006 min  
 Response: 3031452  
 Conc: 427.42 ng/ml

Instrument :  
 ECD\_O  
 ClientSampled :  
 AR1660CCC500



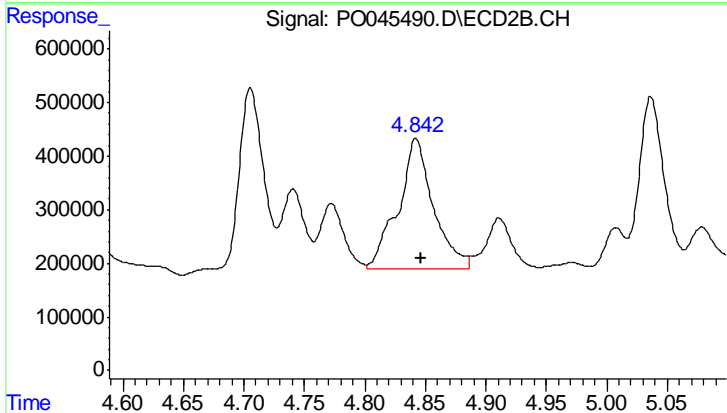
#21 AR-1248-1

R.T.: 4.705 min  
 Delta R.T.: -0.004 min  
 Response: 4566629  
 Conc: 430.26 ng/ml



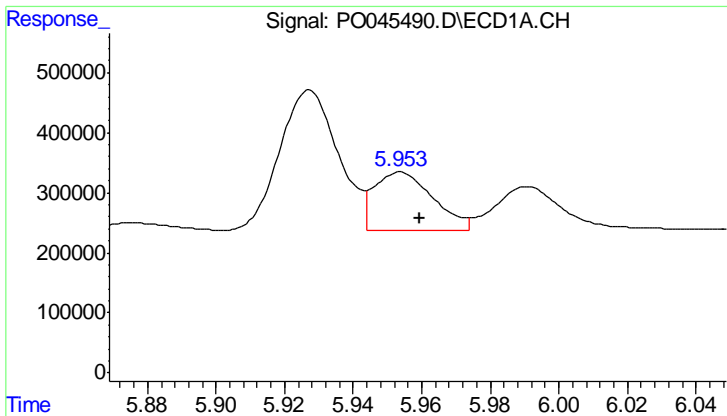
#22 AR-1248-2

R.T.: 5.699 min  
 Delta R.T.: -0.006 min  
 Response: 3195975  
 Conc: 513.33 ng/ml



#22 AR-1248-2

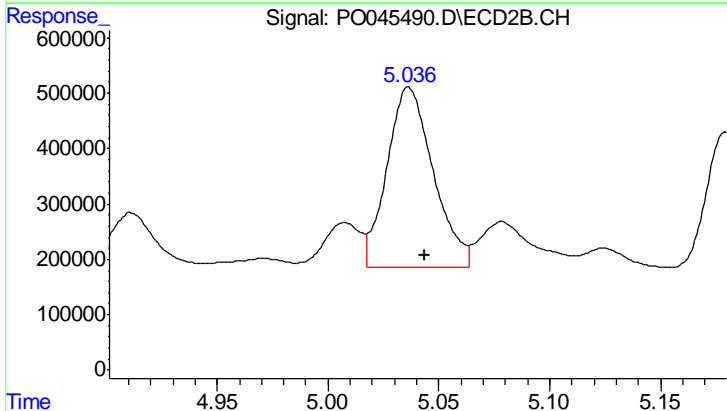
R.T.: 4.842 min  
 Delta R.T.: -0.004 min  
 Response: 4970290  
 Conc: 483.03 ng/ml



#23 AR-1248-3

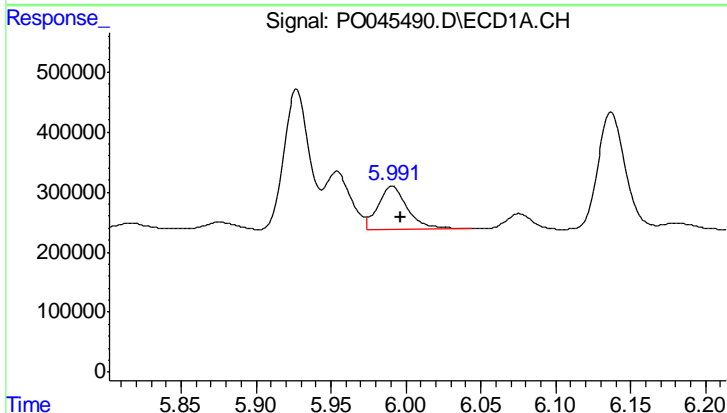
R.T.: 5.954 min  
 Delta R.T.: -0.006 min  
 Response: 1148151  
 Conc: 132.43 ng/ml

Instrument :  
 ECD\_O  
 ClientSampled :  
 AR1660CCC500



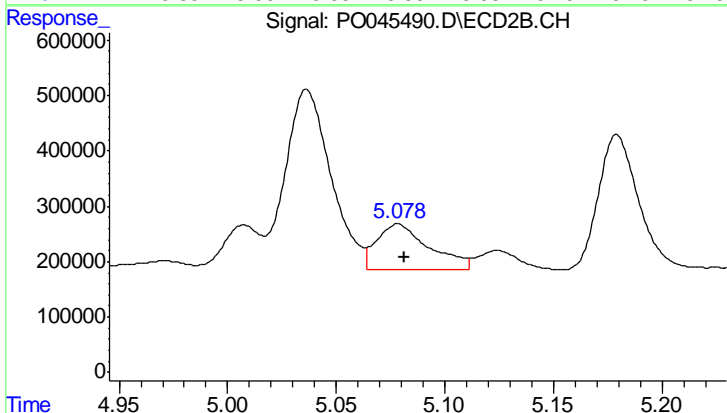
#23 AR-1248-3

R.T.: 5.036 min  
 Delta R.T.: -0.007 min  
 Response: 4715106  
 Conc: 293.22 ng/ml



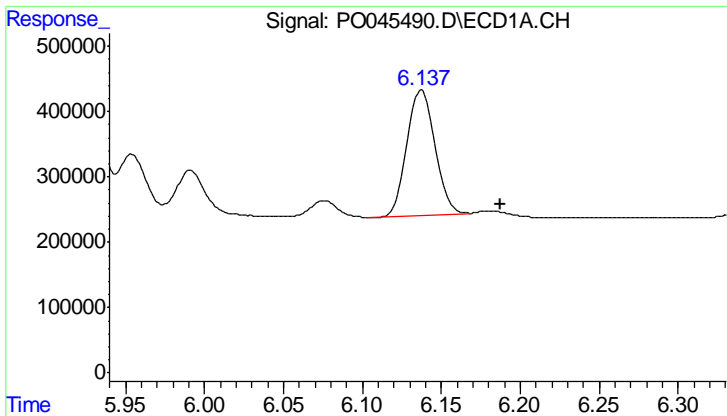
#24 AR-1248-4

R.T.: 5.991 min  
 Delta R.T.: -0.005 min  
 Response: 984026  
 Conc: 111.16 ng/ml



#24 AR-1248-4

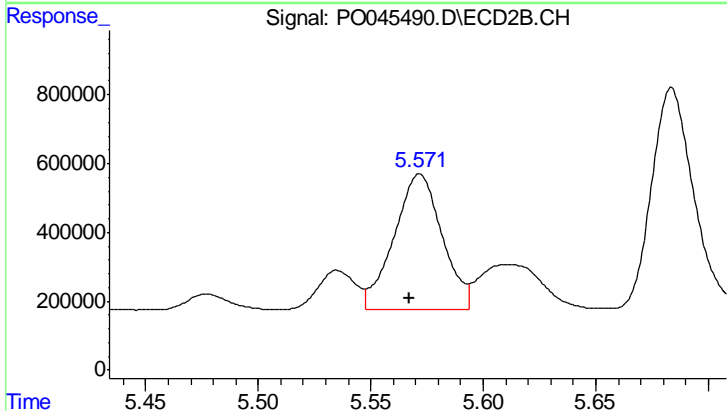
R.T.: 5.079 min  
 Delta R.T.: -0.003 min  
 Response: 1385298  
 Conc: 103.39 ng/ml



#25 AR-1248-5

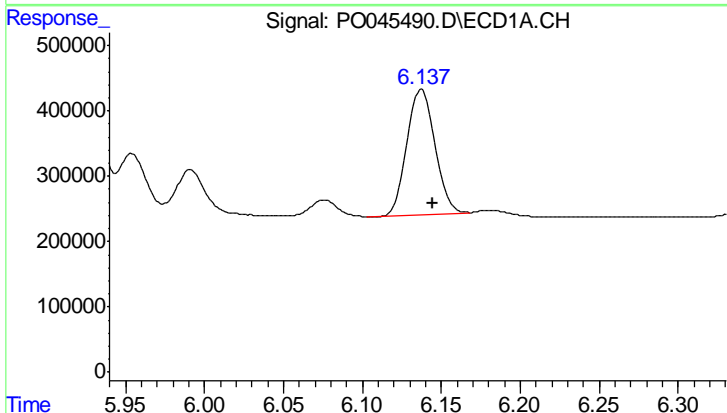
R.T.: 6.137 min  
 Delta R.T.: -0.050 min  
 Response: 2348191  
 Conc: 420.50 ng/ml

Instrument :  
 ECD\_O  
 ClientSampleId :  
 AR1660CCC500



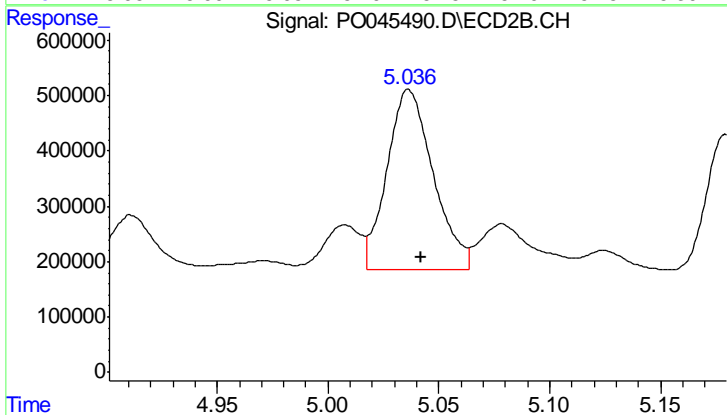
#25 AR-1248-5

R.T.: 5.572 min  
 Delta R.T.: 0.004 min  
 Response: 5888367  
 Conc: 818.43 ng/ml



#26 AR-1254-1

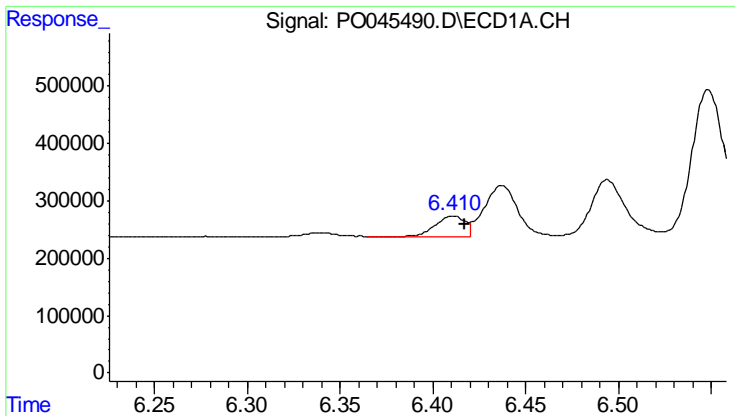
R.T.: 6.137 min  
 Delta R.T.: -0.008 min  
 Response: 2348191  
 Conc: 169.79 ng/ml



#26 AR-1254-1

R.T.: 5.036 min  
 Delta R.T.: -0.006 min  
 Response: 4715106  
 Conc: 254.44 ng/ml

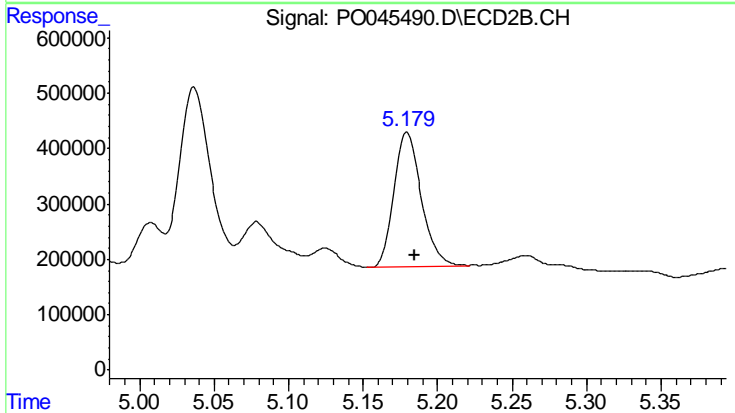




#27 AR-1254-2

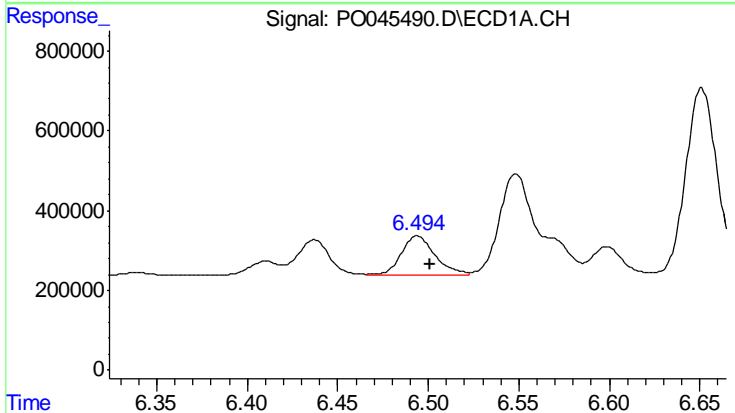
R.T.: 6.411 min  
 Delta R.T.: -0.006 min  
 Response: 389547  
 Conc: 40.54 ng/ml

Instrument :  
 ECD\_O  
 ClientSampled :  
 AR1660CCC500



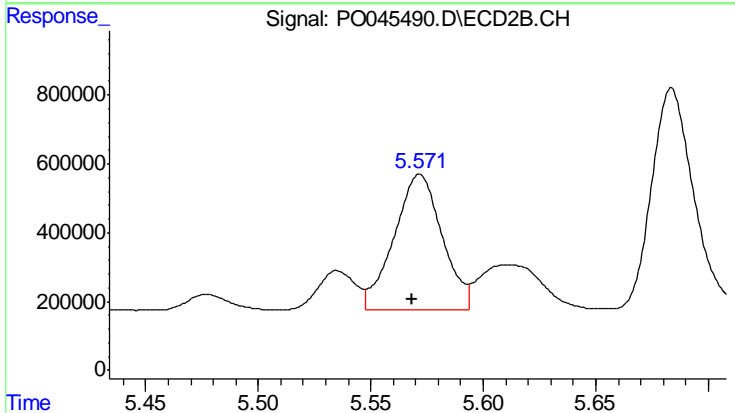
#27 AR-1254-2

R.T.: 5.179 min  
 Delta R.T.: -0.005 min  
 Response: 3086446  
 Conc: 191.44 ng/ml



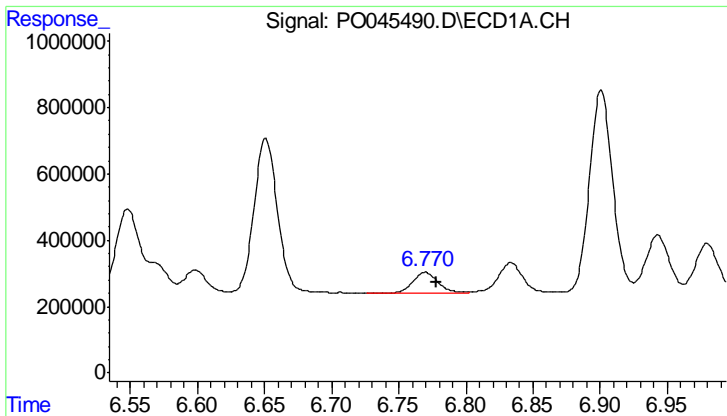
#28 AR-1254-3

R.T.: 6.494 min  
 Delta R.T.: -0.007 min  
 Response: 1280691  
 Conc: 81.28 ng/ml



#28 AR-1254-3

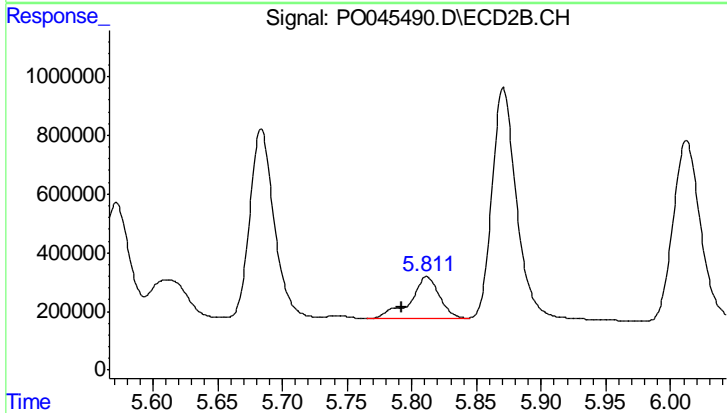
R.T.: 5.572 min  
 Delta R.T.: 0.004 min  
 Response: 5888367  
 Conc: 228.50 ng/ml



#29 AR-1254-4

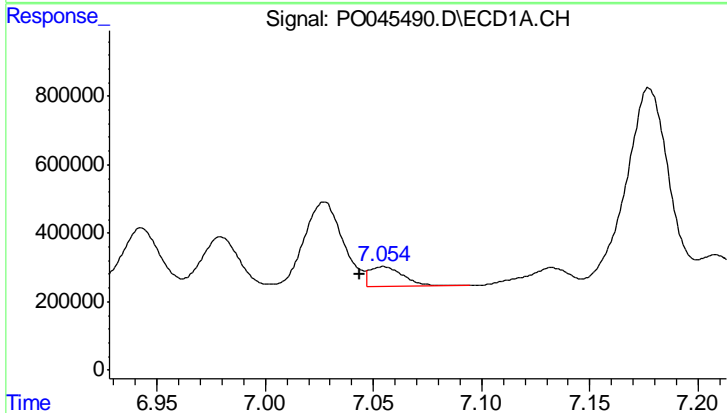
R.T.: 6.770 min  
 Delta R.T.: -0.008 min  
 Response: 863232  
 Conc: 66.10 ng/ml

Instrument :  
 ECD\_O  
 ClientSampled :  
 AR1660CCC500



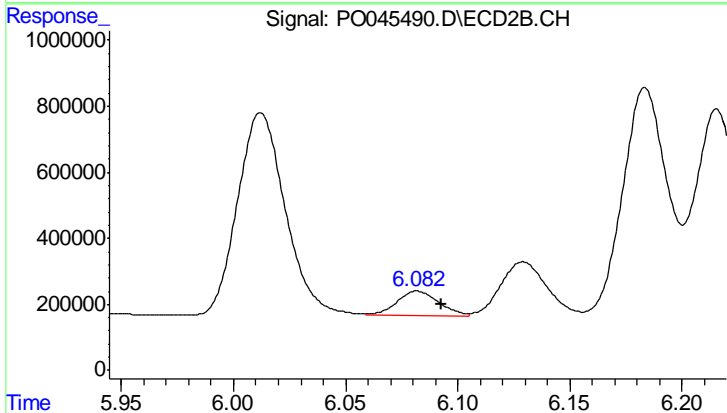
#29 AR-1254-4

R.T.: 5.812 min  
 Delta R.T.: 0.019 min  
 Response: 2265422  
 Conc: 113.76 ng/ml



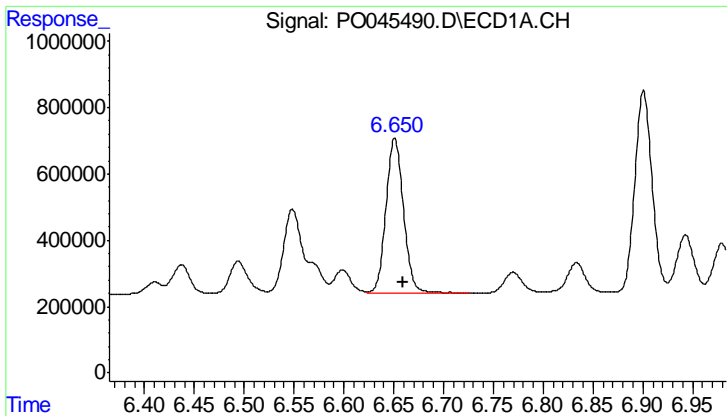
#30 AR-1254-5

R.T.: 7.054 min  
 Delta R.T.: 0.011 min  
 Response: 632492  
 Conc: 66.13 ng/ml



#30 AR-1254-5

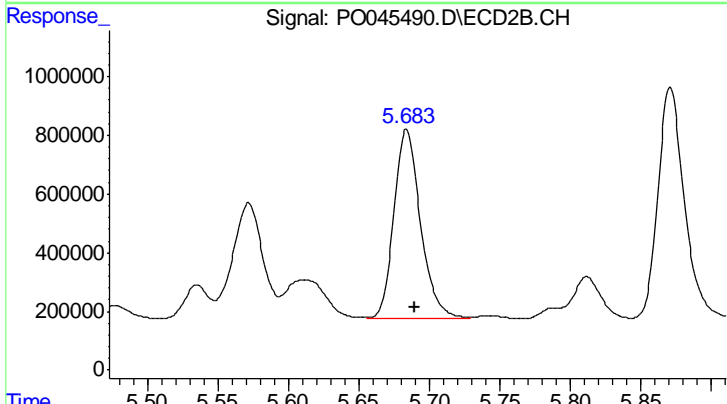
R.T.: 6.082 min  
 Delta R.T.: -0.011 min  
 Response: 977110  
 Conc: 81.58 ng/ml



#31 AR-1260-1

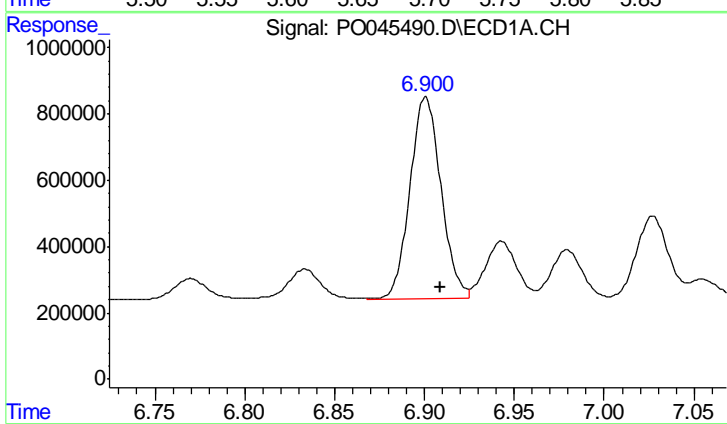
R.T.: 6.651 min  
 Delta R.T.: -0.008 min  
 Response: 5853395  
 Conc: 505.34 ng/ml

Instrument :  
 ECD\_O  
 ClientSampleId :  
 AR1660CCC500



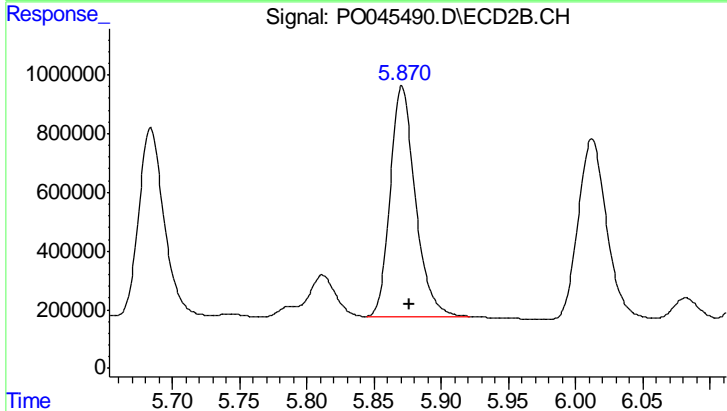
#31 AR-1260-1

R.T.: 5.684 min  
 Delta R.T.: -0.006 min  
 Response: 8493397  
 Conc: 518.90 ng/ml



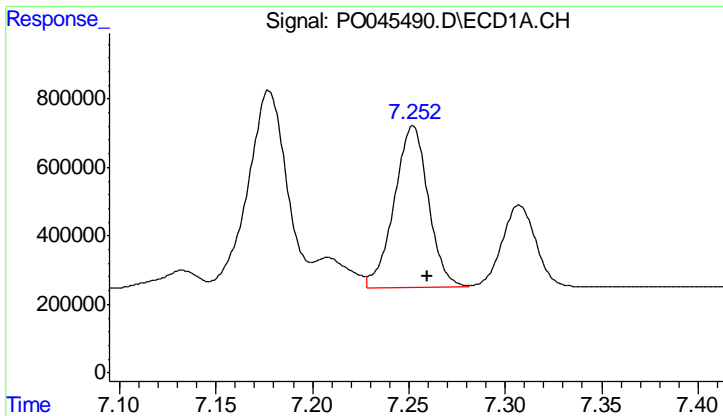
#32 AR-1260-2

R.T.: 6.901 min  
 Delta R.T.: -0.008 min  
 Response: 7339914  
 Conc: 482.36 ng/ml



#32 AR-1260-2

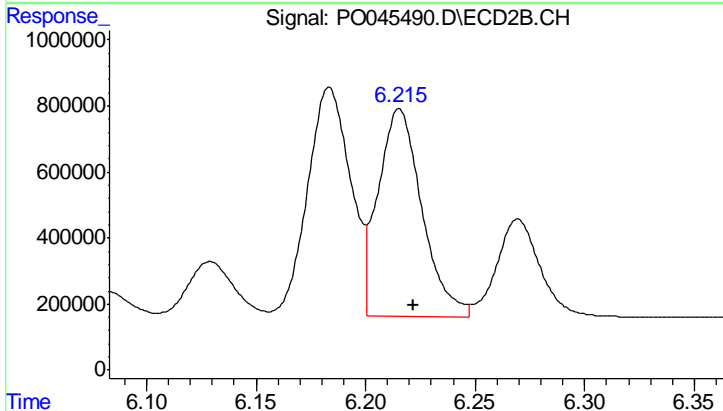
R.T.: 5.871 min  
 Delta R.T.: -0.005 min  
 Response: 10223059  
 Conc: 483.87 ng/ml



#33 AR-1260-3

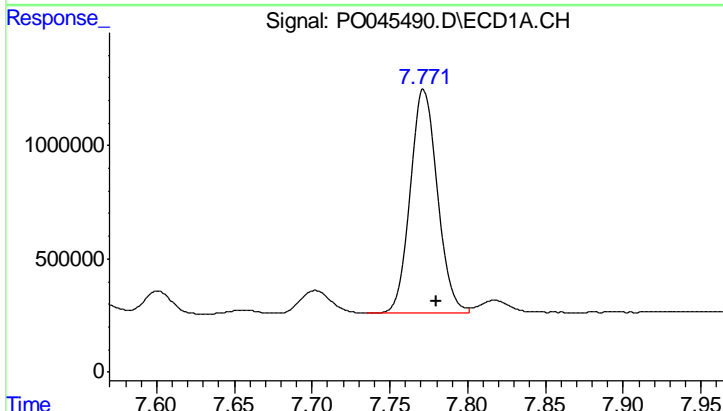
R.T.: 7.252 min  
 Delta R.T.: -0.007 min  
 Response: 5803632  
 Conc: 457.14 ng/ml

Instrument :  
 ECD\_O  
 ClientSampled :  
 AR1660CCC500



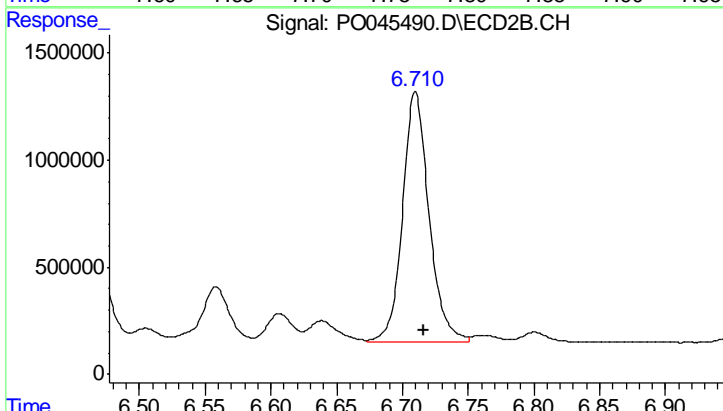
#33 AR-1260-3

R.T.: 6.215 min  
 Delta R.T.: -0.007 min  
 Response: 8806113  
 Conc: 465.26 ng/ml



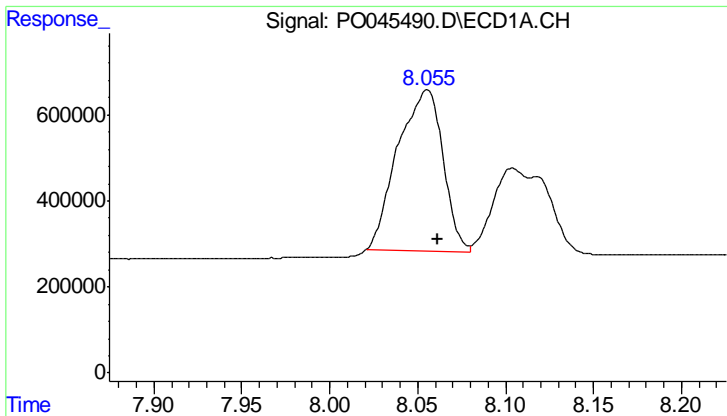
#34 AR-1260-4

R.T.: 7.772 min  
 Delta R.T.: -0.008 min  
 Response: 12126246  
 Conc: 426.85 ng/ml



#34 AR-1260-4

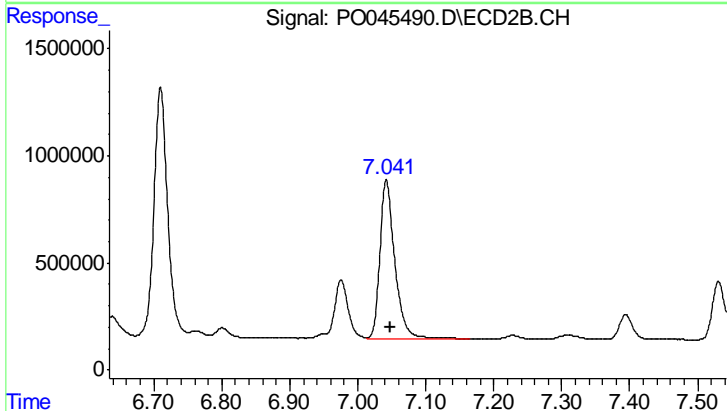
R.T.: 6.710 min  
 Delta R.T.: -0.006 min  
 Response: 16322486  
 Conc: 414.58 ng/ml



#35 AR-1260-5

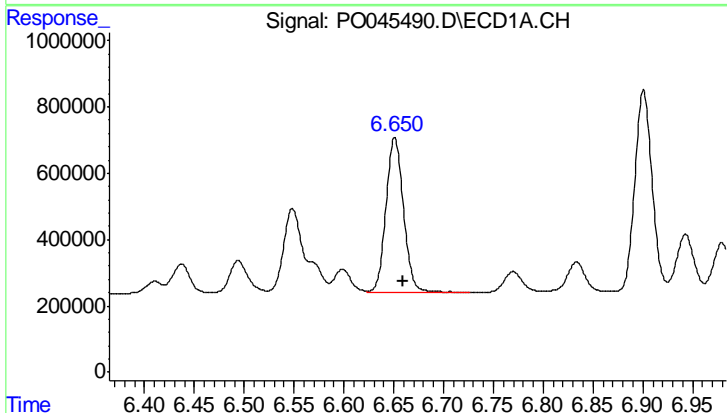
R.T.: 8.055 min  
Delta R.T.: -0.006 min  
Response: 6683620  
Conc: 399.51 ng/ml

Instrument :  
ECD\_O  
ClientSampled :  
AR1660CCC500



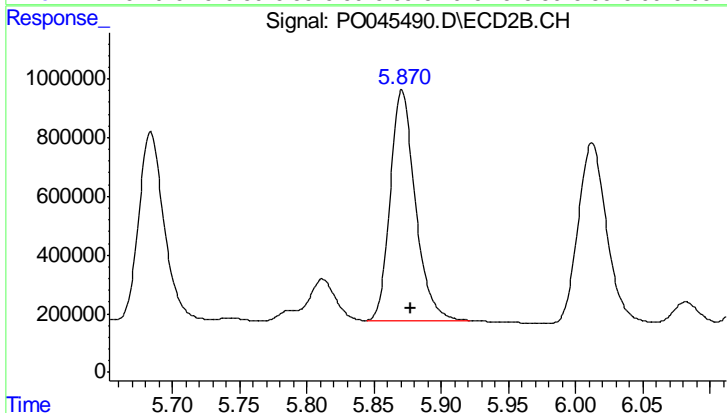
#35 AR-1260-5

R.T.: 7.042 min  
Delta R.T.: -0.006 min  
Response: 11176469  
Conc: 406.07 ng/ml



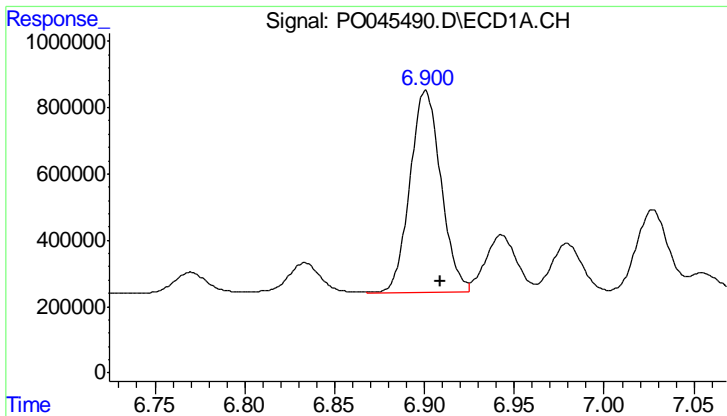
#36 AR-1262-1

R.T.: 6.651 min  
Delta R.T.: -0.009 min  
Response: 5853395  
Conc: 537.65 ng/ml



#36 AR-1262-1

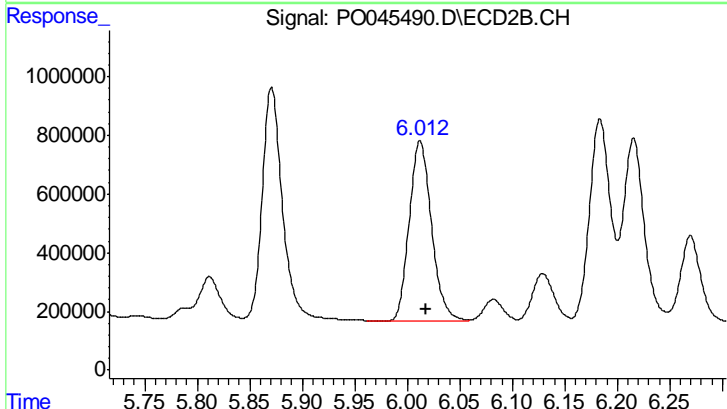
R.T.: 5.871 min  
Delta R.T.: -0.006 min  
Response: 10223059  
Conc: 540.06 ng/ml



#37 AR-1262-2

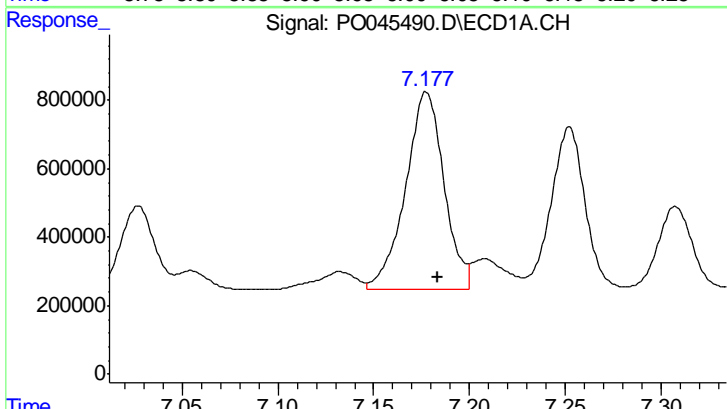
R.T.: 6.901 min  
 Delta R.T.: -0.008 min  
 Response: 7339914  
 Conc: 533.61 ng/ml

Instrument :  
 ECD\_O  
 ClientSampleId :  
 AR1660CCC500



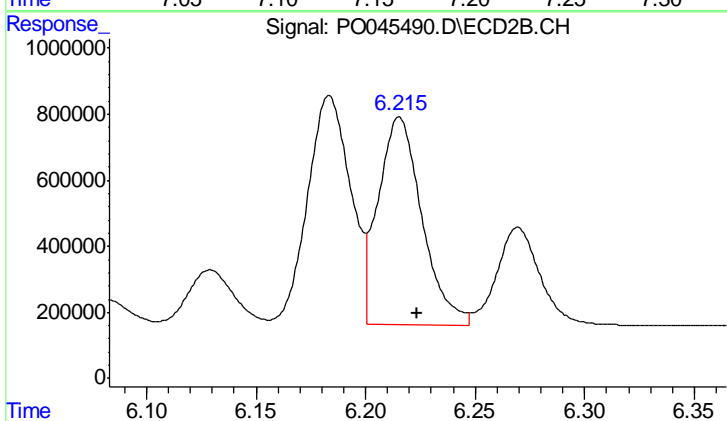
#37 AR-1262-2

R.T.: 6.012 min  
 Delta R.T.: -0.006 min  
 Response: 9055476  
 Conc: 493.45 ng/ml



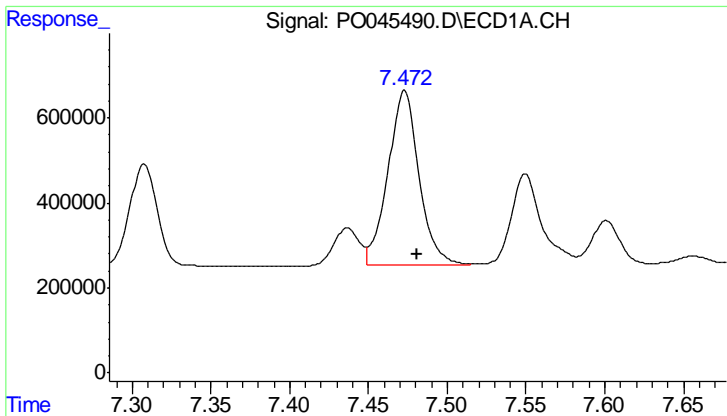
#38 AR-1262-3

R.T.: 7.177 min  
 Delta R.T.: -0.006 min  
 Response: 8066415  
 Conc: 633.01 ng/ml



#38 AR-1262-3

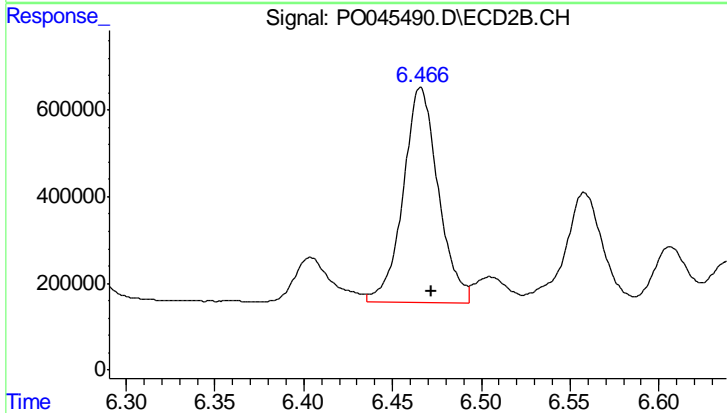
R.T.: 6.215 min  
 Delta R.T.: -0.008 min  
 Response: 8806113  
 Conc: 287.19 ng/ml



#39 AR-1262-4

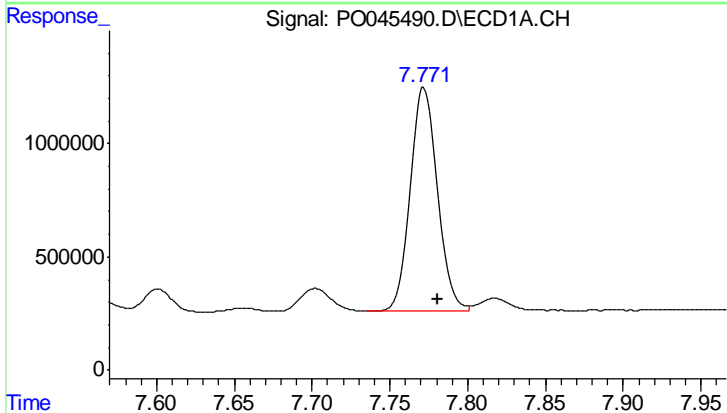
R.T.: 7.473 min  
 Delta R.T.: -0.008 min  
 Response: 5639828  
 Conc: 328.34 ng/ml

Instrument :  
 ECD\_O  
 ClientSampled :  
 AR1660CCC500



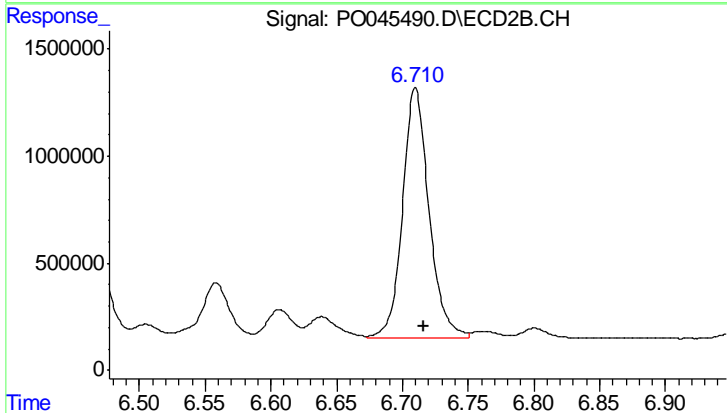
#39 AR-1262-4

R.T.: 6.466 min  
 Delta R.T.: -0.006 min  
 Response: 6824595  
 Conc: 270.84 ng/ml



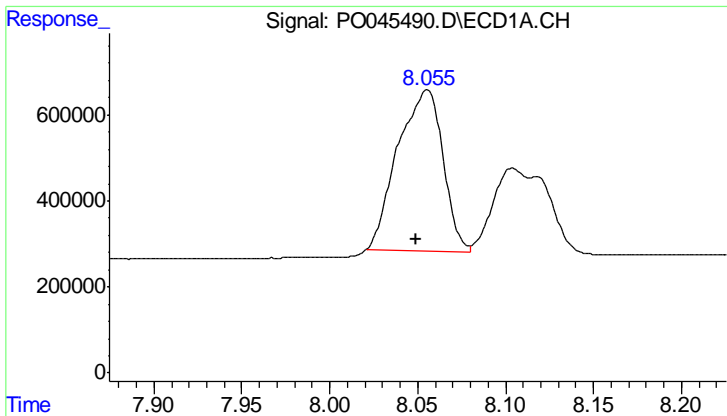
#40 AR-1262-5

R.T.: 7.772 min  
 Delta R.T.: -0.009 min  
 Response: 12126246  
 Conc: 328.14 ng/ml



#40 AR-1262-5

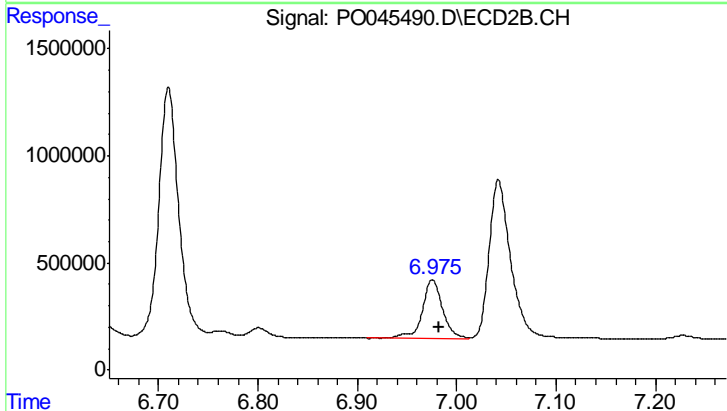
R.T.: 6.710 min  
 Delta R.T.: -0.007 min  
 Response: 16322486  
 Conc: 299.54 ng/ml



#41 AR-1268-1

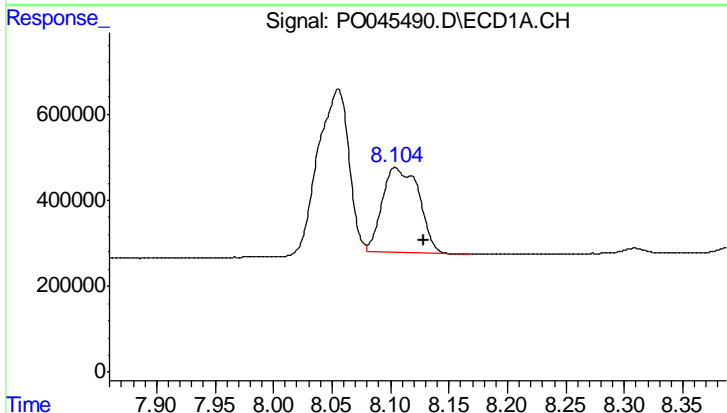
R.T.: 8.055 min  
 Delta R.T.: 0.006 min  
 Response: 6683620  
 Conc: 175.48 ng/ml

Instrument :  
 ECD\_O  
 ClientSampled :  
 AR1660CCC500



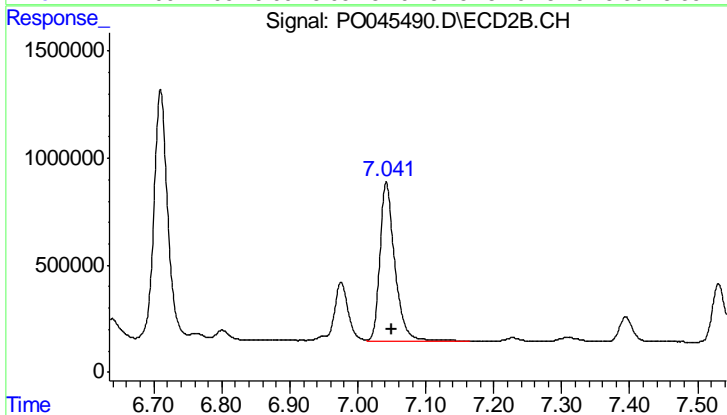
#41 AR-1268-1

R.T.: 6.976 min  
 Delta R.T.: -0.007 min  
 Response: 3834410  
 Conc: 69.49 ng/ml



#42 AR-1268-2

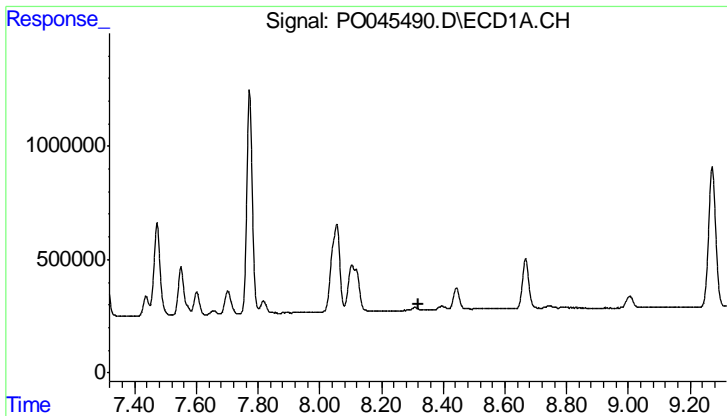
R.T.: 8.104 min  
 Delta R.T.: -0.024 min  
 Response: 4270124  
 Conc: 125.33 ng/ml



#42 AR-1268-2

R.T.: 7.042 min  
 Delta R.T.: -0.007 min  
 Response: 11176469  
 Conc: 218.88 ng/ml

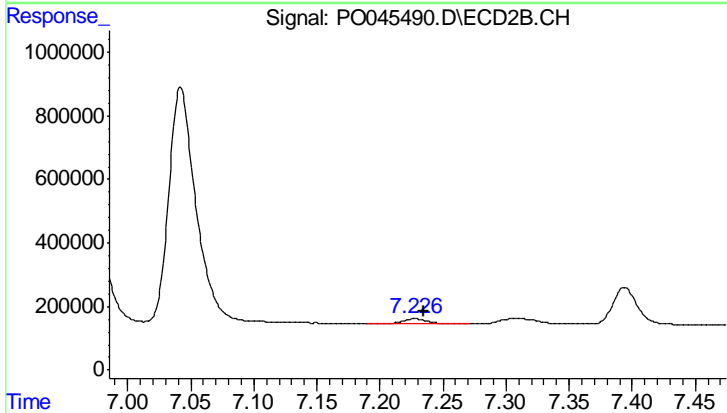




#43 AR-1268-3

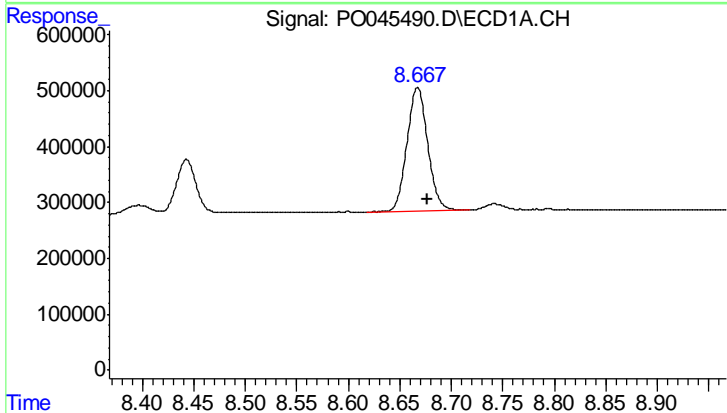
R.T.: 0.000 min  
 Exp R.T.: 8.318 min  
 Response: 0  
 Conc: N.D.

Instrument :  
 ECD\_O  
 ClientSampleId :  
 AR1660CCC500



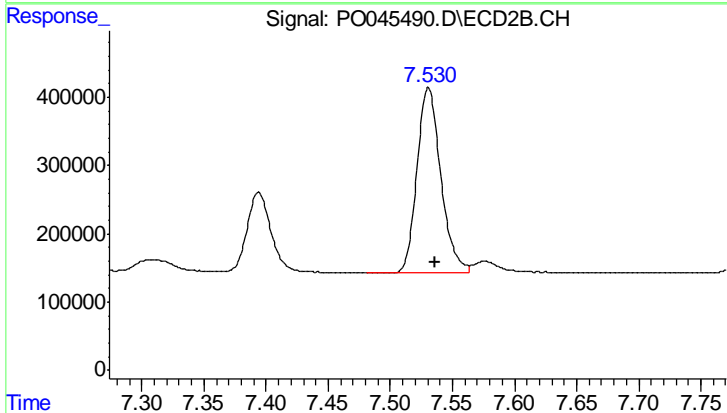
#43 AR-1268-3

R.T.: 7.227 min  
 Delta R.T.: -0.007 min  
 Response: 193975  
 Conc: 4.38 ng/ml



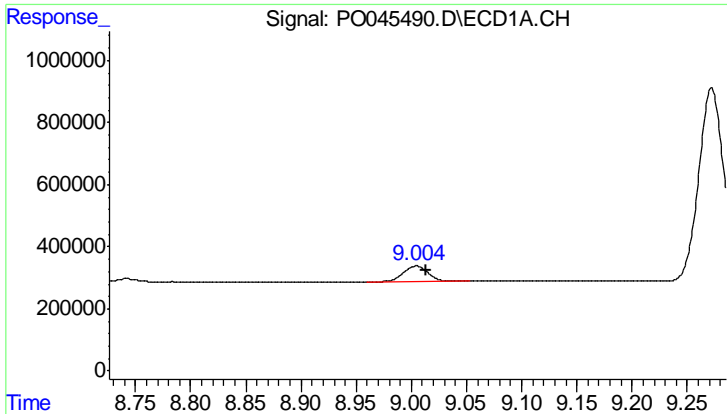
#44 AR-1268-4

R.T.: 8.667 min  
 Delta R.T.: -0.009 min  
 Response: 3104565  
 Conc: 254.87 ng/ml



#44 AR-1268-4

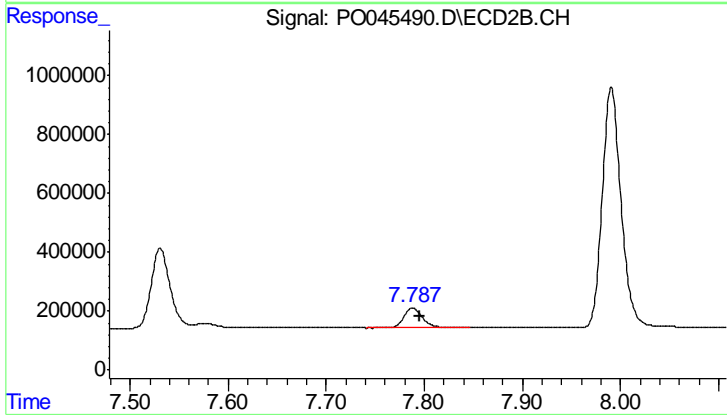
R.T.: 7.531 min  
 Delta R.T.: -0.006 min  
 Response: 3619644  
 Conc: 207.97 ng/ml



#45 AR-1268-5

R.T.: 9.005 min  
Delta R.T.: -0.009 min  
Response: 795449  
Conc: 9.30 ng/ml

Instrument :  
ECD\_O  
ClientSampled :  
AR1660CCC500



#45 AR-1268-5

R.T.: 7.788 min  
Delta R.T.: -0.007 min  
Response: 887595  
Conc: 7.09 ng/ml