

Data Path : Y:\PESTPCBSRV\HPCHEM1\ECD\_O\Data\PO060518\  
 Data File : PO045499.D  
 Signal(s) : Signal #1: ECD1A.CH Signal #2: ECD2B.CH  
 Acq On : 05 Jun 2018 00:56  
 Operator : SM/UA  
 Sample : J3235-02  
 Misc :  
 ALS Vial : 39 Sample Multiplier: 1

Instrument :  
 ECD\_O  
 ClientSampleId :  
 CLEAN-SAND-21

Integration File signal 1: autoint1.e  
 Integration File signal 2: autoint2.e  
 Quant Time: Jun 05 02:33:45 2018  
 Quant Method : Y:\PESTPCBSRV\HPCHEM1\ECD\_O\methods\PO053018.M  
 Quant Title : GC EXTRACTABLES  
 QLast Update : Thu May 31 04:53:22 2018  
 Response via : Initial Calibration  
 Integrator: ChemStation 6890 Scale Mode: Small noise peaks clipped

Volume Inj. : 2 µl  
 Signal #1 Phase : ZB-MR1 Signal #2 Phase: ZB-MR2  
 Signal #1 Info : 30Mx0.32mmx 0.50µ Signal #2 Info : 30M x 0.32mm x 0.25µm

Compound	RT#1	RT#2	Resp#1	Resp#2	ng/ml	ng/ml
-----						
System Monitoring Compounds						
1) SA Tetrachlo...	3.997	3.273	5338047	7330117	25.556	26.435
2) SA Decachlor...	9.273	7.992	3921398	4617360	17.074	16.383

Target Compounds

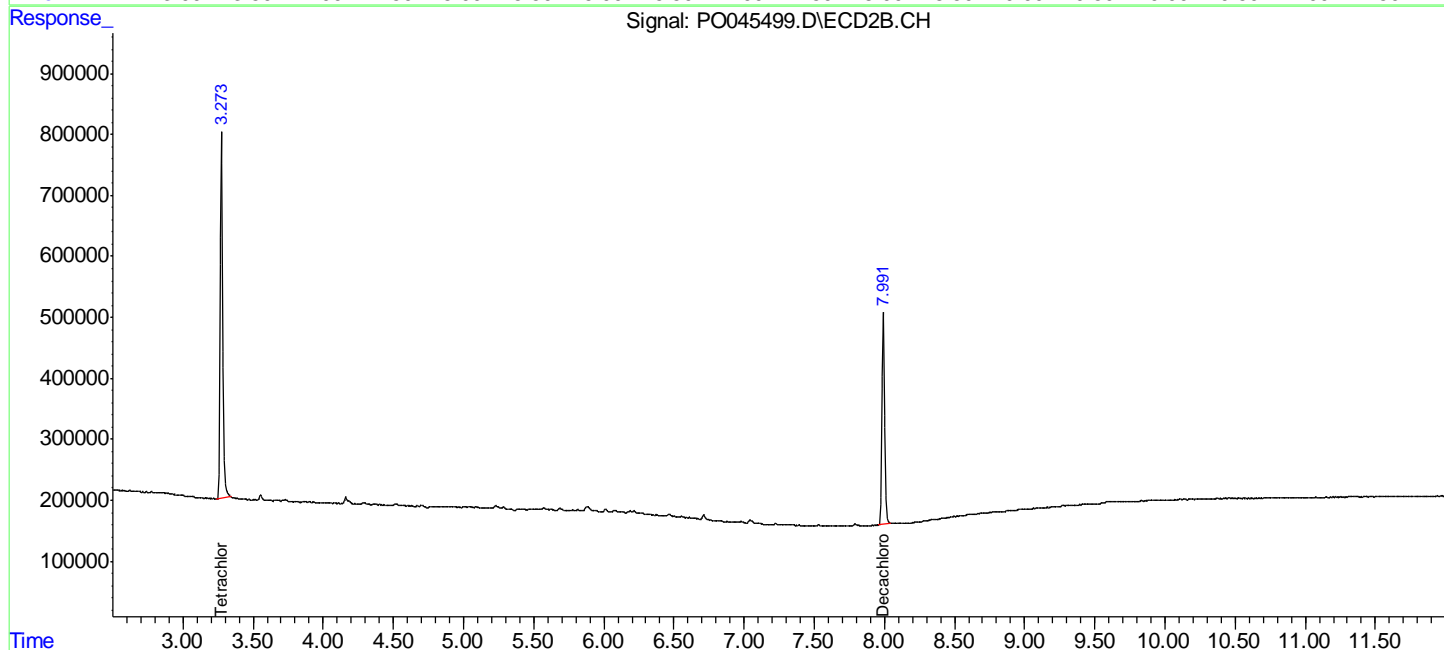
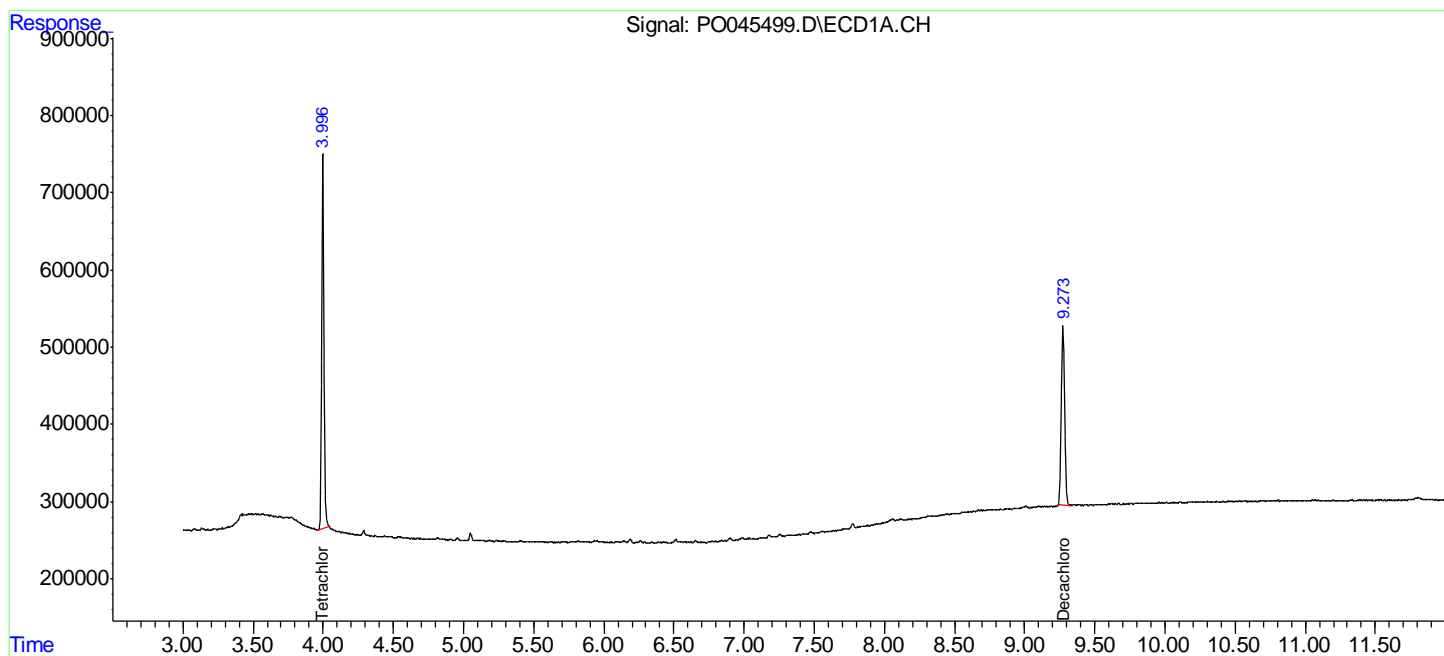
(f)=RT Delta > 1/2 Window (#)=Amounts differ by > 25% (m)=manual int.

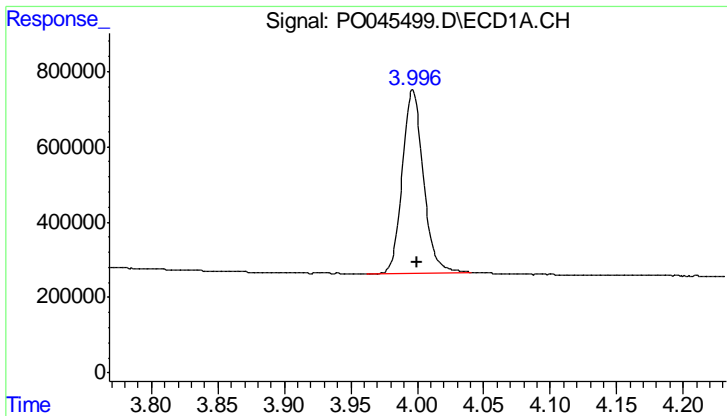
Data Path : Y:\PESTPCBSRV\HPCHEM1\ECD\_O\Data\PO060518\  
 Data File : PO045499.D  
 Signal(s) : Signal #1: ECD1A.CH Signal #2: ECD2B.CH  
 Acq On : 05 Jun 2018 00:56  
 Operator : SM/UA  
 Sample : J3235-02  
 Misc :  
 ALS Vial : 39 Sample Multiplier: 1

Instrument :  
 ECD\_O  
 ClientSampleId :  
 CLEAN-SAND-21

Integration File signal 1: autoint1.e  
 Integration File signal 2: autoint2.e  
 Quant Time: Jun 05 02:33:45 2018  
 Quant Method : Y:\PESTPCBSRV\HPCHEM1\ECD\_O\methods\PO053018.M  
 Quant Title : GC EXTRACTABLES  
 QLast Update : Thu May 31 04:53:22 2018  
 Response via : Initial Calibration  
 Integrator: ChemStation 6890 Scale Mode: Small noise peaks clipped

Volume Inj. : 2 µl  
 Signal #1 Phase : ZB-MR1 Signal #2 Phase: ZB-MR2  
 Signal #1 Info : 30Mx0.32mmx 0.50µ Signal #2 Info : 30M x 0.32mm x 0.25µm

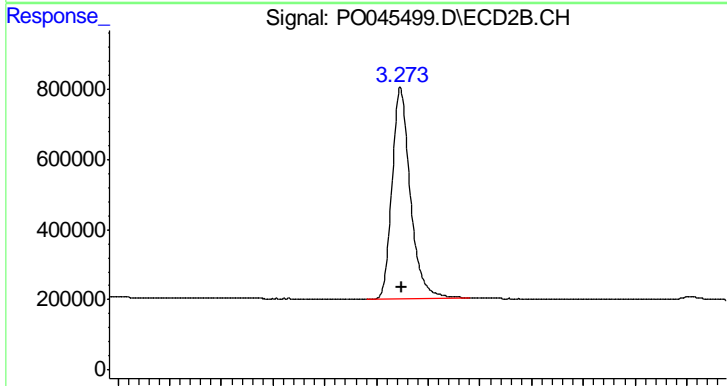




#1 Tetrachloro-m-xylene

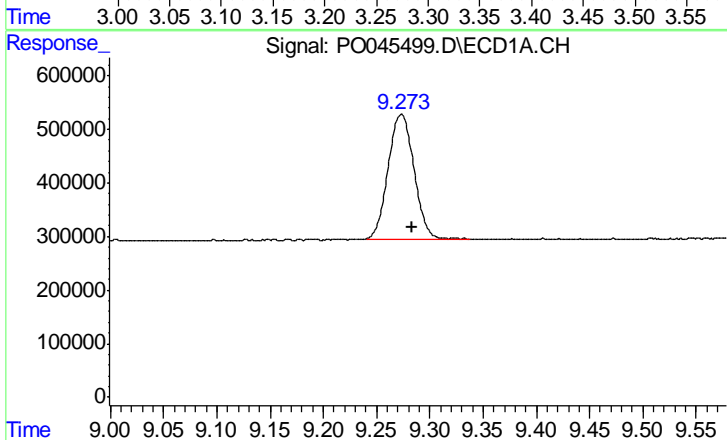
R.T.: 3.997 min  
 Delta R.T.: -0.004 min  
 Response: 5338047  
 Conc: 25.56 ng/ml

Instrument :  
 ECD\_O  
 ClientSampleId :  
 CLEAN-SAND-21



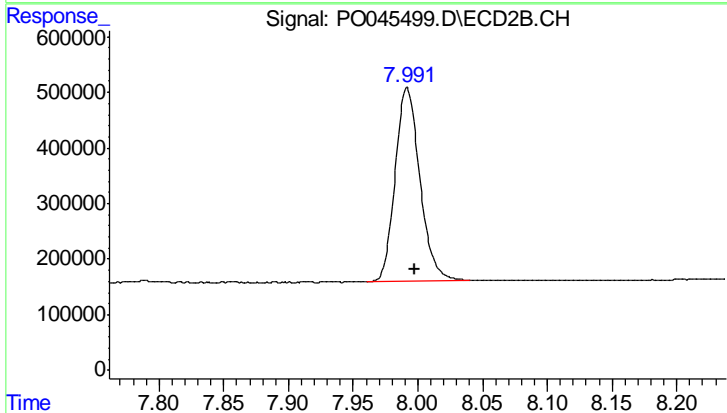
#1 Tetrachloro-m-xylene

R.T.: 3.273 min  
 Delta R.T.: -0.002 min  
 Response: 7330117  
 Conc: 26.43 ng/ml



#2 Decachlorobiphenyl

R.T.: 9.273 min  
 Delta R.T.: -0.010 min  
 Response: 3921398  
 Conc: 17.07 ng/ml



#2 Decachlorobiphenyl

R.T.: 7.992 min  
 Delta R.T.: -0.006 min  
 Response: 4617360  
 Conc: 16.38 ng/ml