

Data Path : Z:\pestpcbsrv\HPCHEM1\ECD_0\Data\P0060519\
 Data File : P0056909.D
 Signal(s) : Signal #1: ECD1A.CH Signal #2: ECD2B.CH
 Acq On : 06 Jun 2019 3:11
 Operator : SM/SJ
 Sample : PB120273BS
 Misc :
 ALS Vial : 33 Sample Multiplier: 1

Instrument :
 ECD_O
 ClientSampleId :
 AR1660CCC500

Integration File signal 1: autoint1.e
 Integration File signal 2: autoint2.e
 Quant Time: Jun 06 04:25:56 2019
 Quant Method : Z:\pestpcbsrv\HPCHEM1\ECD_0\methods\P0052319.M
 Quant Title : GC EXTRACTABLES
 QLast Update : Fri May 24 00:11:05 2019
 Response via : Initial Calibration
 Integrator: ChemStation 6890 Scale Mode: Small noise peaks clipped

Volume Inj. : 2 µl
 Signal #1 Phase : ZB-MR1 Signal #2 Phase: ZB-MR2
 Signal #1 Info : 30Mx0.32mmx 0.50µ Signal #2 Info : 30M x 0.32mm x 0.25µm

Compound	RT#1	RT#2	Resp#1	Resp#2	ng/ml	ng/ml
----------	------	------	--------	--------	-------	-------

System Monitoring Compounds

1) SA Tetrachlo...	4.248	3.567	1062855	791488	27.763	24.000
2) SA Decachlor...	9.821	8.500	1012491	703508	20.628	19.730

Target Compounds

3) L1 AR-1016-1	0.000	4.635	0	172694	N.D.	137.224 #
4) L1 AR-1016-2	0.000	4.653	0	238862	N.D.	132.582 #
5) L1 AR-1016-3	0.000	4.827	0	132528	N.D.	134.417 #
6) L1 AR-1016-4	0.000	4.868	0	106892	N.D.	129.121 #
7) L1 AR-1016-5	0.000	5.079	0	99120	N.D.	92.400 #
9) L2 AR-1221-2	0.000	3.862	0	25414	N.D.	67.436 #
10) L2 AR-1221-3	0.000	3.936	0	80920	N.D.	67.599 #
11) L3 AR-1232-1	0.000	3.936	0	80920	N.D.	90.075 #
12) L3 AR-1232-2	0.000	4.653	0	238862	N.D.	245.774 #
13) L3 AR-1232-3	0.000	4.827	0	132528	N.D.	253.258 #
14) L3 AR-1232-4	0.000	4.908	0	124838	N.D.	253.381 #
15) L3 AR-1232-5	0.000	5.079	0	99120	N.D.	175.977 #
16) L4 AR-1242-1	0.000	4.635	0	172694	N.D.	139.429 #
17) L4 AR-1242-2	0.000	4.653	0	238862	N.D.	132.818 #
18) L4 AR-1242-3	0.000	4.827	0	132528	N.D.	134.806 #
19) L4 AR-1242-4	0.000	4.908	0	124838	N.D.	128.289 #
20) L4 AR-1242-5	0.000	5.426	0	97866	N.D.	82.778 #
21) L5 AR-1248-1	0.000	4.635	0	172694	N.D.	184.400 #
22) L5 AR-1248-2	0.000	4.868	0	106892	N.D.	84.137 #
23) L5 AR-1248-3	0.000	4.908	0	124838	N.D.	95.595 #
24) L5 AR-1248-4	0.000	5.079	0	99120	N.D.	62.590 #
25) L5 AR-1248-5	0.000	5.426	0	97866	N.D.	59.131 #
26) L6 AR-1254-1	0.000	5.426	0	97866	N.D.	37.004 #
27) L6 AR-1254-2	0.000	5.572	0	94821	N.D.	43.984 #
28) L6 AR-1254-3	0.000	5.985	0	169250	N.D.	46.230 #
29) L6 AR-1254-4	0.000	6.200	0	16203	N.D.	7.375 #
30) L6 AR-1254-5	7.536	6.612	405487	314595	107.681	99.234
31) L7 AR-1260-1	6.998	6.100	316574	245905	123.364	122.929
32) L7 AR-1260-2	7.253	6.287	343656	304381	113.637	123.483
33) L7 AR-1260-3	0.000	6.439	0	267443	N.D.	119.223 #
34) L7 AR-1260-4	0.000	6.906	0	191183	N.D.	102.730 #
35) L7 AR-1260-5	8.144	7.148	488523	443368	102.157	102.814
36) L8 AR-1262-1	0.000	6.648	0	234596	N.D.	56.203 #
37) L8 AR-1262-2	8.144	7.148	488523	443368	64.079	64.531
38) L8 AR-1262-3	0.000	7.427	0	97787	N.D.	33.110 #
39) L8 AR-1262-4	0.000	7.491	0	314970	N.D.	60.448 #
40) L8 AR-1262-5	0.000	7.984	0	86537	N.D.	37.266 #
41) L9 AR-1268-1	0.000	7.427	0	97787	N.D.	13.099 #
42) L9 AR-1268-2	0.000	7.491	0	314970	N.D.	45.105 #
44) L9 AR-1268-4	0.000	7.984	0	86537	N.D.	37.073 #

Data Path : Z:\pestpcbsrv\HPCHEM1\ECD_0\Data\P0060519\
 Data File : P0056909.D
 Signal(s) : Signal #1: ECD1A.CH Signal #2: ECD2B.CH
 Acq On : 06 Jun 2019 3:11
 Operator : SM/SJ
 Sample : PB120273BS
 Misc :
 ALS Vial : 33 Sample Multiplier: 1

Instrument :
 ECD_0
 ClientSampleId :
 AR1660CCC500

Integration File signal 1: autoint1.e
 Integration File signal 2: autoint2.e
 Quant Time: Jun 06 04:25:56 2019
 Quant Method : Z:\pestpcbsrv\HPCHEM1\ECD_0\methods\P0052319.M
 Quant Title : GC EXTRACTABLES
 QLast Update : Fri May 24 00:11:05 2019
 Response via : Initial Calibration
 Integrator: ChemStation 6890 Scale Mode: Small noise peaks clipped

Volume Inj. : 2 µl
 Signal #1 Phase : ZB-MR1 Signal #2 Phase: ZB-MR2
 Signal #1 Info : 30Mx0.32mmx 0.50µ Signal #2 Info : 30M x 0.32mm x 0.25µm

Compound	RT#1	RT#2	Resp#1	Resp#2	ng/ml	ng/ml
45) L9 AR-1268-5	0.000	8.260	0	27751	N.D.	1.603 #

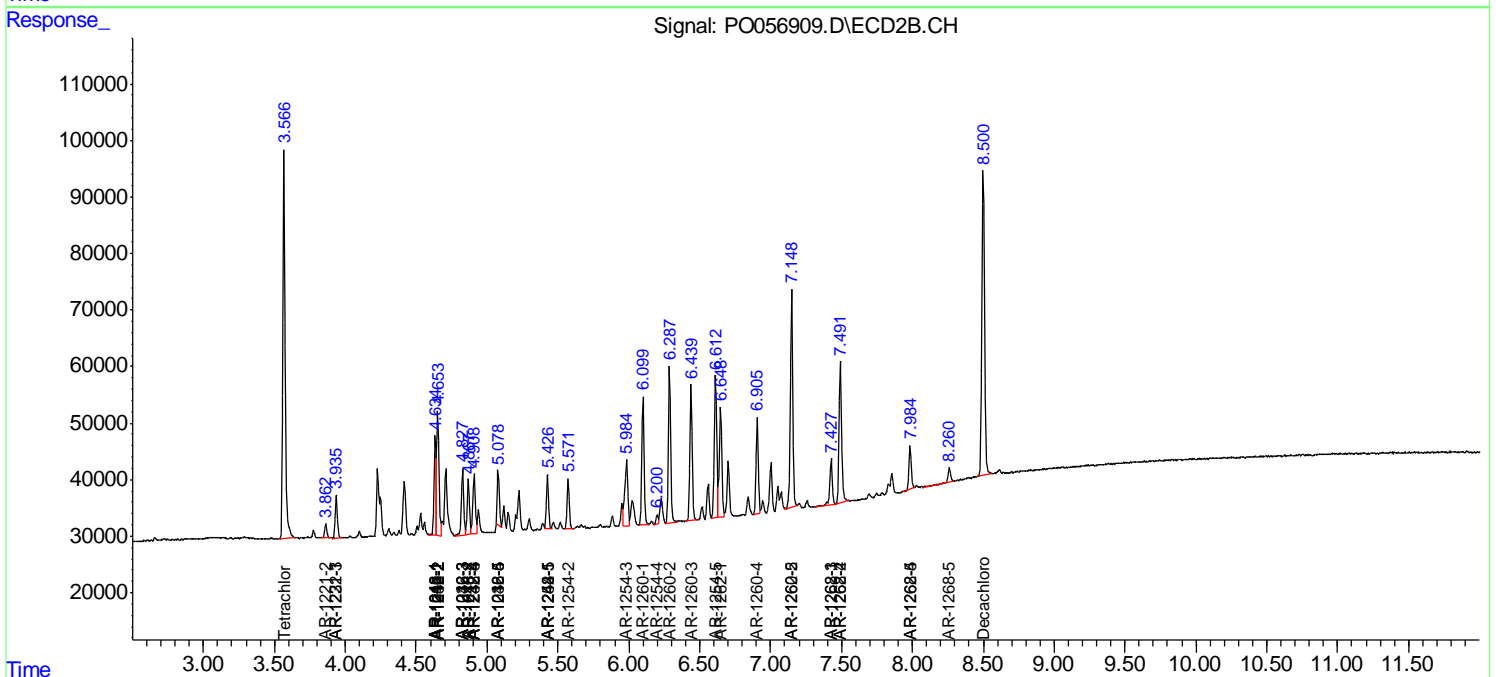
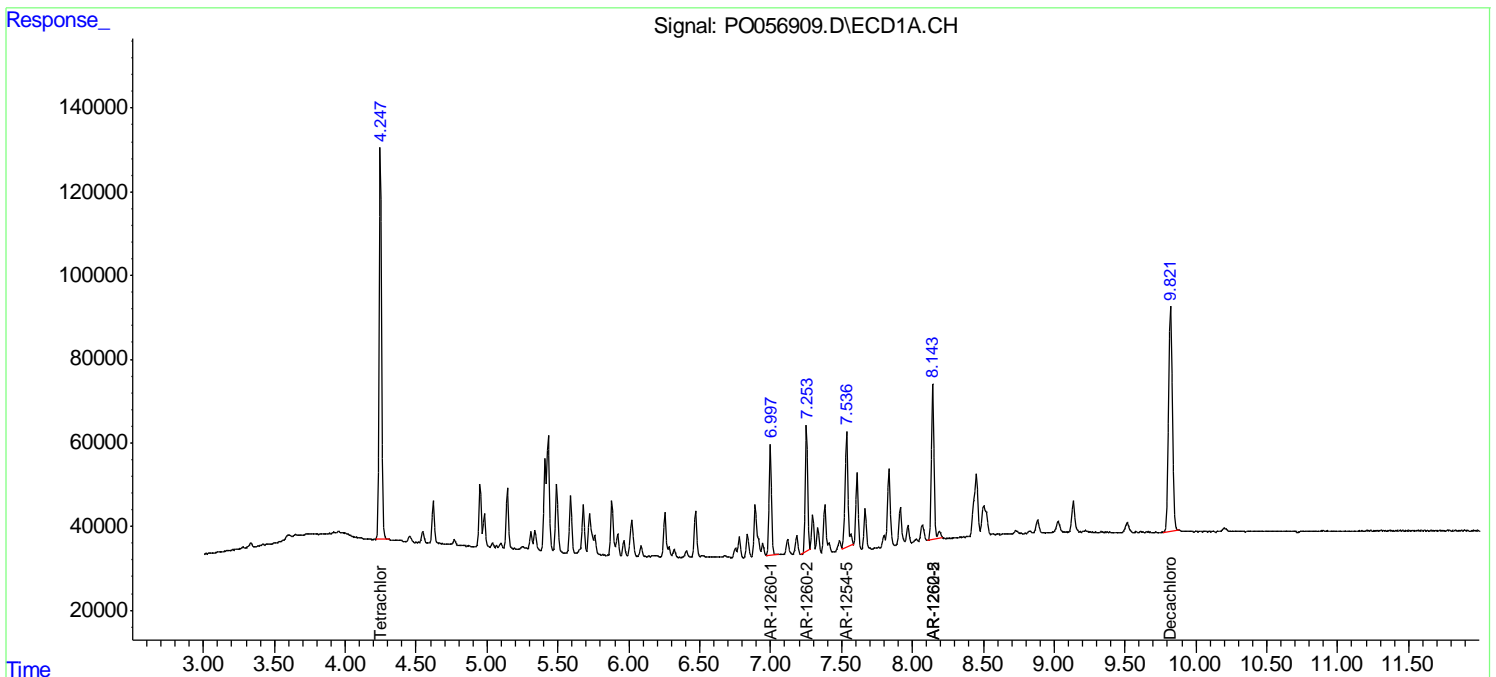
(f)=RT Delta > 1/2 Window (#)=Amounts differ by > 25% (m)=manual int.

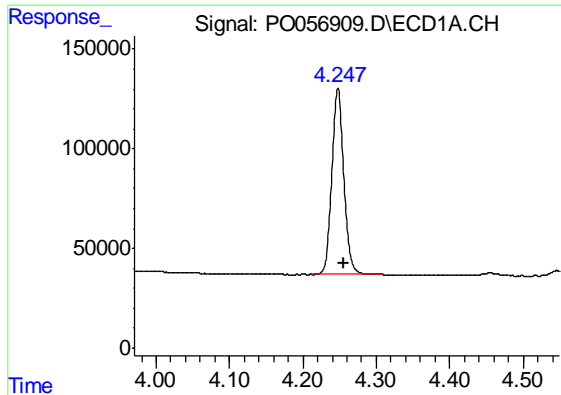
Data Path : Z:\pestpcbsrv\HPCHEM1\ECD_O\Data\PO060519\
 Data File : PO056909.D
 Signal(s) : Signal #1: ECD1A.CH Signal #2: ECD2B.CH
 Acq On : 06 Jun 2019 3:11
 Operator : SM/SJ
 Sample : PB120273BS
 Misc :
 ALS Vial : 33 Sample Multiplier: 1

Instrument :
 ECD_O
 ClientSampleId :
 AR1660CCC500

Integration File signal 1: autoint1.e
 Integration File signal 2: autoint2.e
 Quant Time: Jun 06 04:25:56 2019
 Quant Method : Z:\pestpcbsrv\HPCHEM1\ECD_O\methods\PO052319.M
 Quant Title : GC EXTRACTABLES
 QLast Update : Fri May 24 00:11:05 2019
 Response via : Initial Calibration
 Integrator: ChemStation 6890 Scale Mode: Small noise peaks clipped

Volume Inj. : 2 µl
 Signal #1 Phase : ZB-MR1 Signal #2 Phase: ZB-MR2
 Signal #1 Info : 30Mx0.32mmx 0.50µ Signal #2 Info : 30M x 0.32mm x 0.25µm

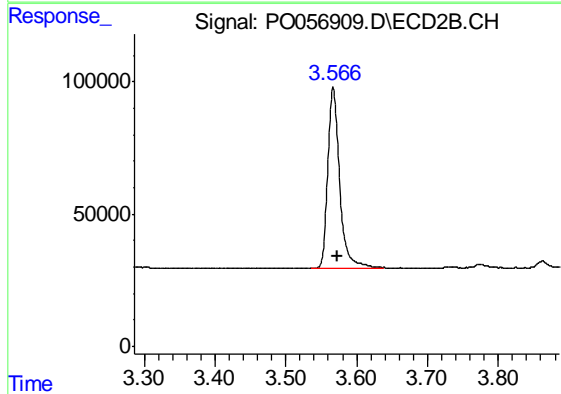




#1 Tetrachloro-m-xylene

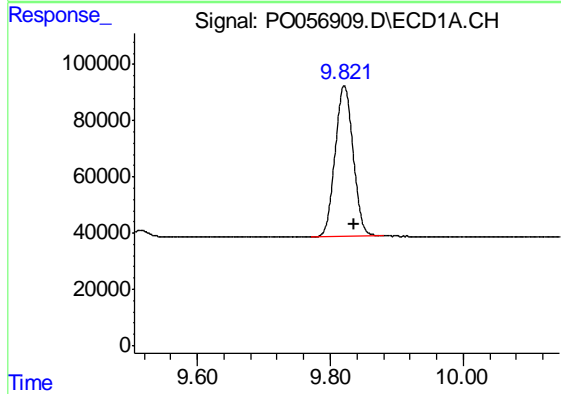
R.T.: 4.248 min
 Delta R.T.: -0.008 min
 Response: 1062855
 Conc: 27.76 ng/ml

Instrument :
 ECD_O
 ClientSampleId :
 AR1660CCC500



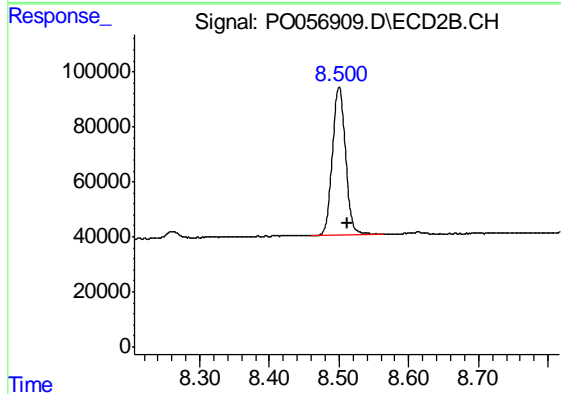
#1 Tetrachloro-m-xylene

R.T.: 3.567 min
 Delta R.T.: -0.006 min
 Response: 791488
 Conc: 24.00 ng/ml



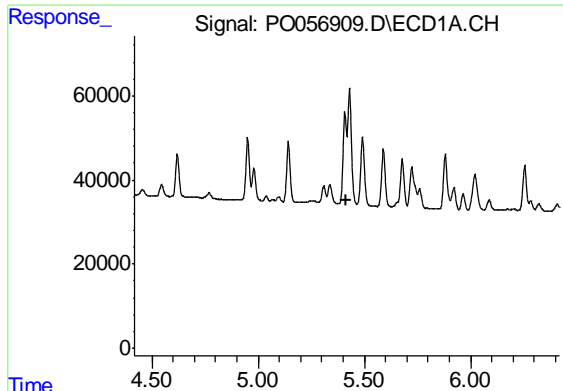
#2 Decachlorobiphenyl

R.T.: 9.821 min
 Delta R.T.: -0.015 min
 Response: 1012491
 Conc: 20.63 ng/ml



#2 Decachlorobiphenyl

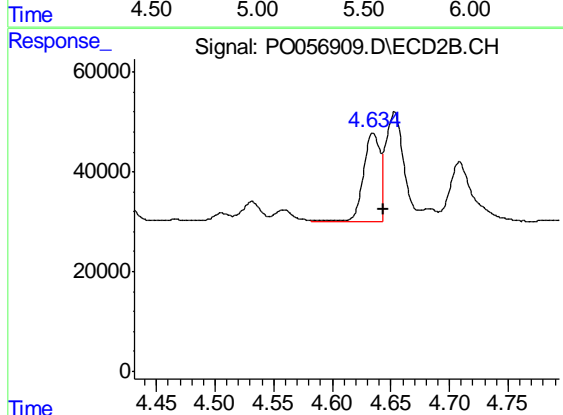
R.T.: 8.500 min
 Delta R.T.: -0.013 min
 Response: 703508
 Conc: 19.73 ng/ml



#3 AR-1016-1

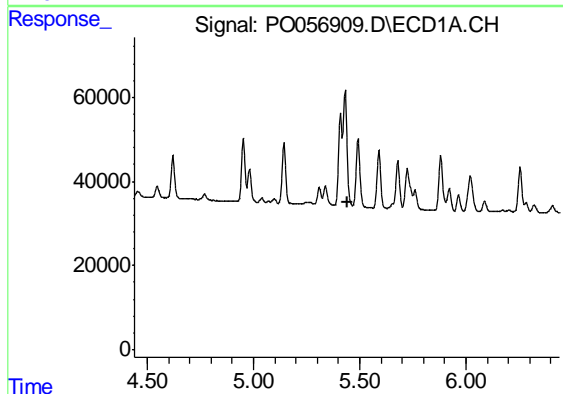
R.T.: 0.000 min
 Exp R.T. : 5.418 min
 Response: 0
 Conc: N.D.

Instrument :
 ECD_O
 ClientSampleId :
 AR1660CCC500



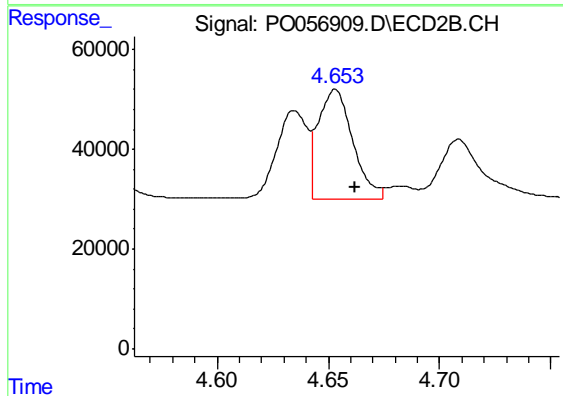
#3 AR-1016-1

R.T.: 4.635 min
 Delta R.T.: -0.009 min
 Response: 172694
 Conc: 137.22 ng/ml



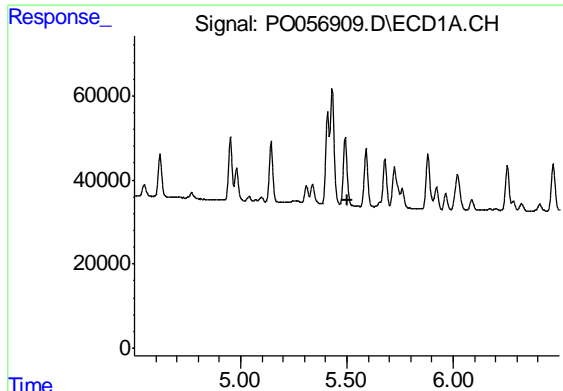
#4 AR-1016-2

R.T.: 0.000 min
 Exp R.T. : 5.440 min
 Response: 0
 Conc: N.D.



#4 AR-1016-2

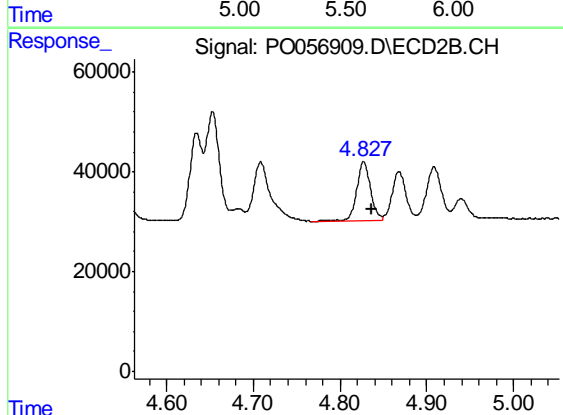
R.T.: 4.653 min
 Delta R.T.: -0.009 min
 Response: 238862
 Conc: 132.58 ng/ml



#5 AR-1016-3

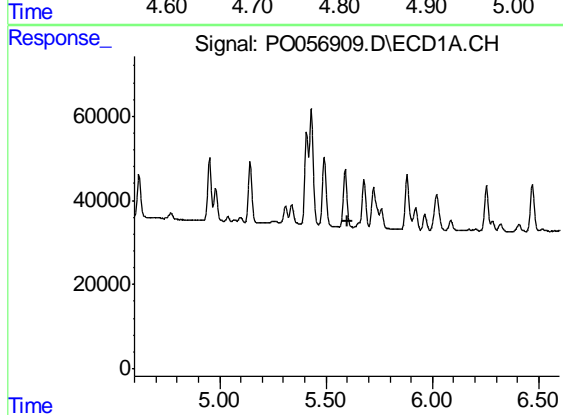
R.T.: 0.000 min
 Exp R.T. : 5.500 min
 Response: 0
 Conc: N.D.

Instrument :
 ECD_O
 ClientSampleId :
 AR1660CCC500



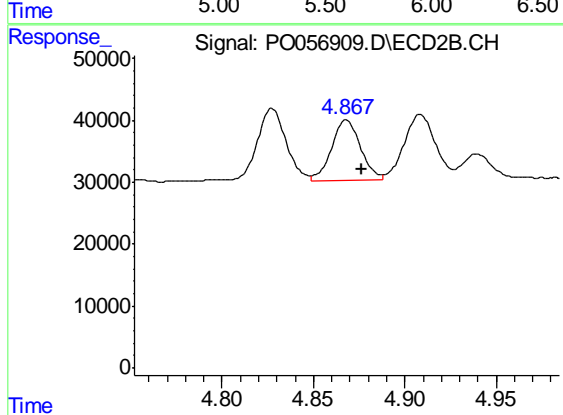
#5 AR-1016-3

R.T.: 4.827 min
 Delta R.T.: -0.009 min
 Response: 132528
 Conc: 134.42 ng/ml



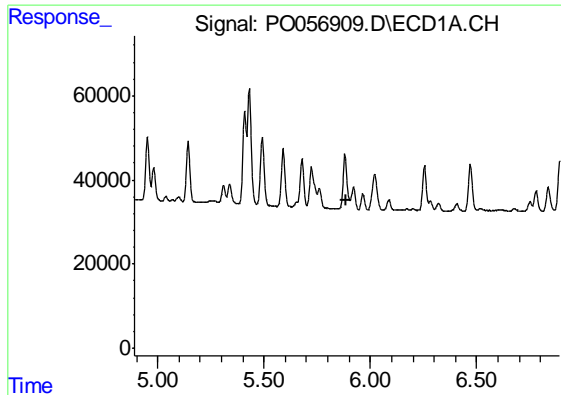
#6 AR-1016-4

R.T.: 0.000 min
 Exp R.T. : 5.599 min
 Response: 0
 Conc: N.D.



#6 AR-1016-4

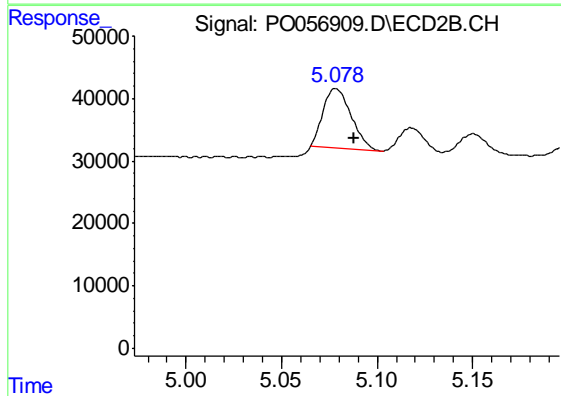
R.T.: 4.868 min
 Delta R.T.: -0.008 min
 Response: 106892
 Conc: 129.12 ng/ml



#7 AR-1016-5

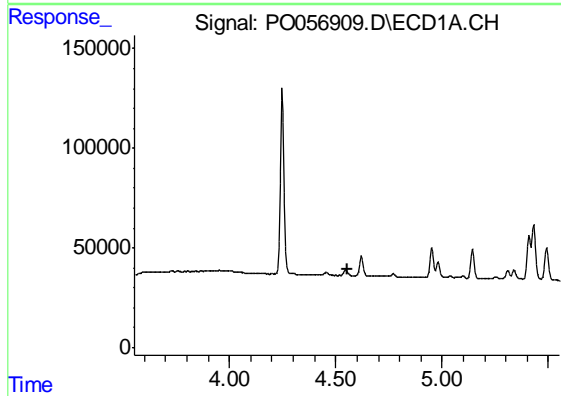
R.T.: 0.000 min
 Exp R.T. : 5.890 min
 Response: 0
 Conc: N.D.

Instrument :
 ECD_O
 ClientSampleId :
 AR1660CCC500



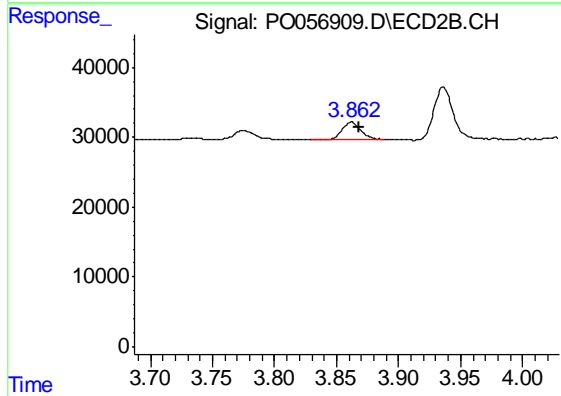
#7 AR-1016-5

R.T.: 5.079 min
 Delta R.T.: -0.009 min
 Response: 99120
 Conc: 92.40 ng/ml



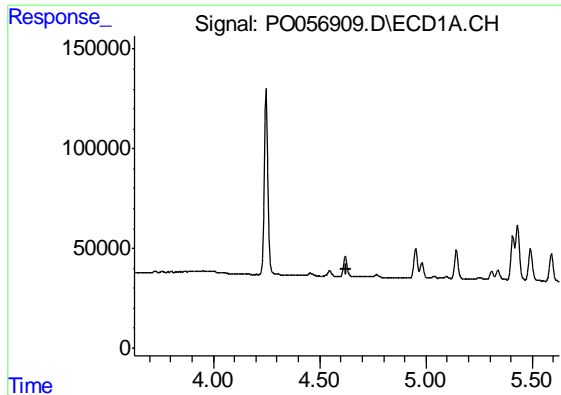
#9 AR-1221-2

R.T.: 0.000 min
 Exp R.T. : 4.553 min
 Response: 0
 Conc: N.D.



#9 AR-1221-2

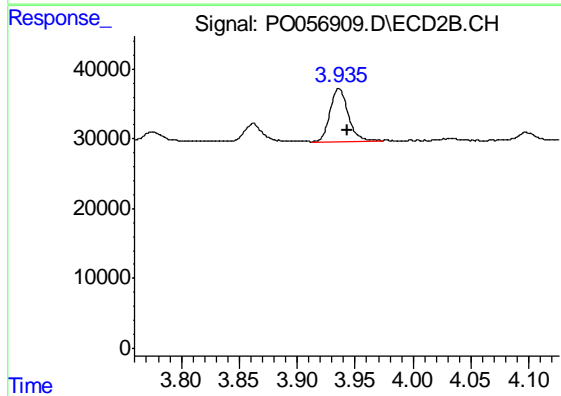
R.T.: 3.862 min
 Delta R.T.: -0.006 min
 Response: 25414
 Conc: 67.44 ng/ml



#10 AR-1221-3

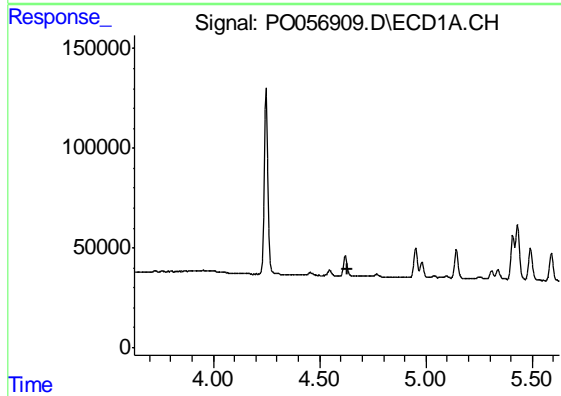
R.T.: 0.000 min
 Exp R.T. : 4.628 min
 Response: 0
 Conc: N.D.

Instrument :
 ECD_O
 ClientSampleId :
 AR1660CCC500



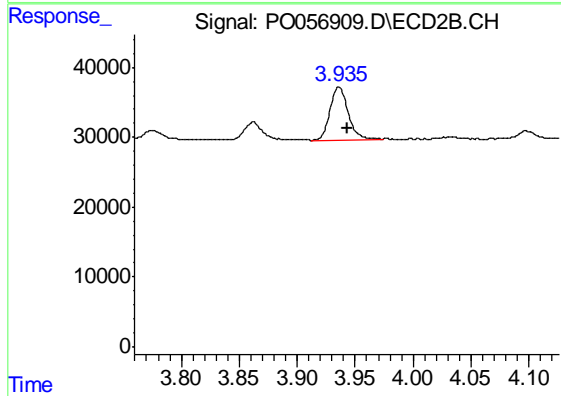
#10 AR-1221-3

R.T.: 3.936 min
 Delta R.T.: -0.007 min
 Response: 80920
 Conc: 67.60 ng/ml



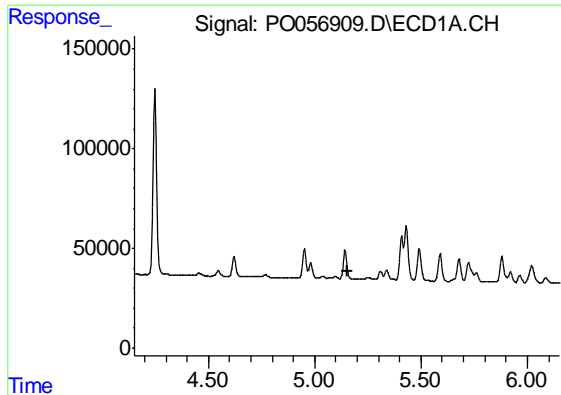
#11 AR-1232-1

R.T.: 0.000 min
 Exp R.T. : 4.629 min
 Response: 0
 Conc: N.D.



#11 AR-1232-1

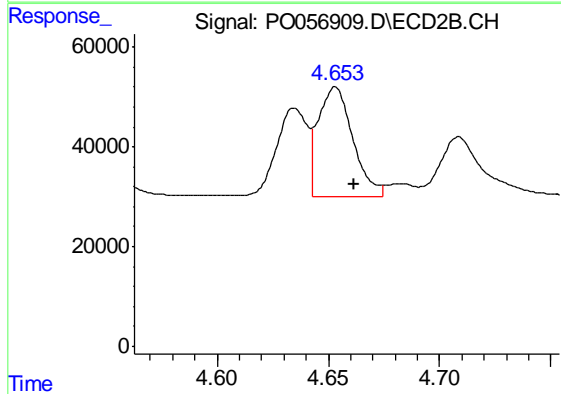
R.T.: 3.936 min
 Delta R.T.: -0.007 min
 Response: 80920
 Conc: 90.08 ng/ml



#12 AR-1232-2

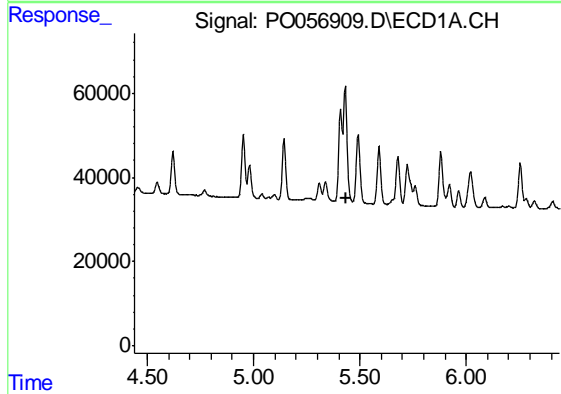
R.T.: 0.000 min
 Exp R.T. : 5.152 min
 Response: 0
 Conc: N.D.

Instrument :
 ECD_O
 ClientSampleId :
 AR1660CCC500



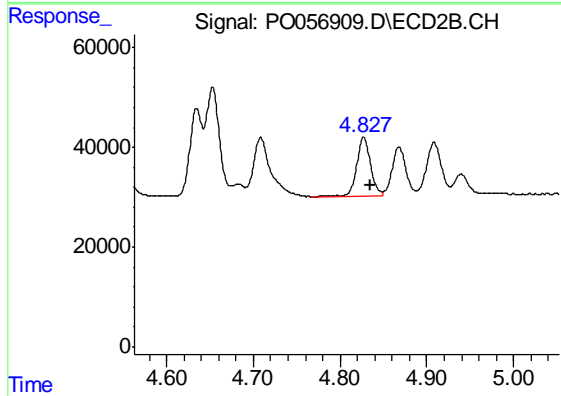
#12 AR-1232-2

R.T.: 4.653 min
 Delta R.T.: -0.008 min
 Response: 238862
 Conc: 245.77 ng/ml



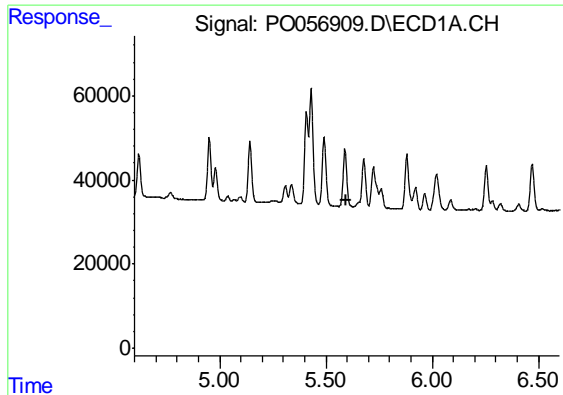
#13 AR-1232-3

R.T.: 0.000 min
 Exp R.T. : 5.439 min
 Response: 0
 Conc: N.D.



#13 AR-1232-3

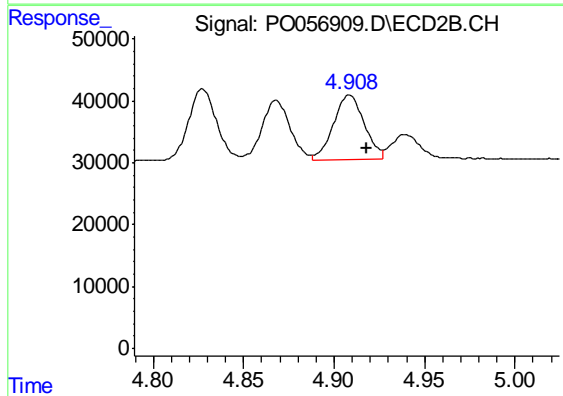
R.T.: 4.827 min
 Delta R.T.: -0.009 min
 Response: 132528
 Conc: 253.26 ng/ml



#14 AR-1232-4

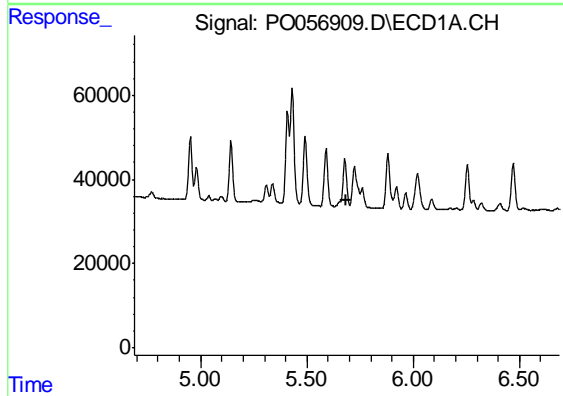
R.T.: 0.000 min
 Exp R.T. : 5.599 min
 Response: 0
 Conc: N.D.

Instrument :
 ECD_O
 ClientSampleId :
 AR1660CCC500



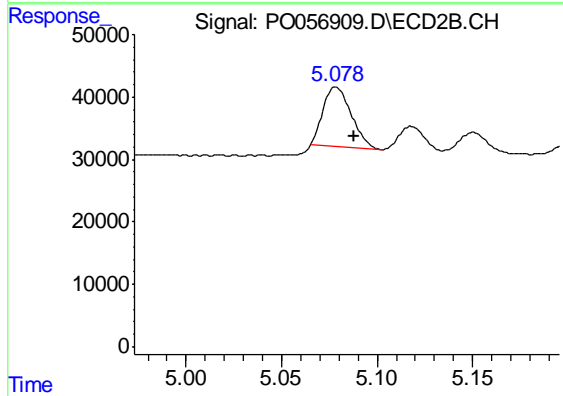
#14 AR-1232-4

R.T.: 4.908 min
 Delta R.T.: -0.009 min
 Response: 124838
 Conc: 253.38 ng/ml



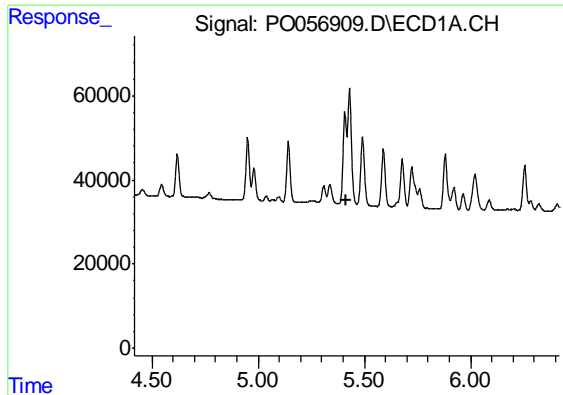
#15 AR-1232-5

R.T.: 0.000 min
 Exp R.T. : 5.688 min
 Response: 0
 Conc: N.D.



#15 AR-1232-5

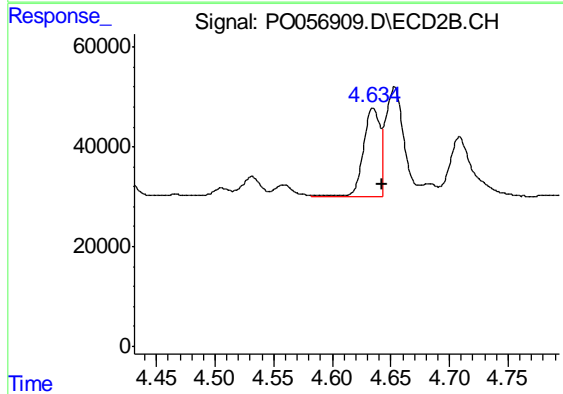
R.T.: 5.079 min
 Delta R.T.: -0.010 min
 Response: 99120
 Conc: 175.98 ng/ml



#16 AR-1242-1

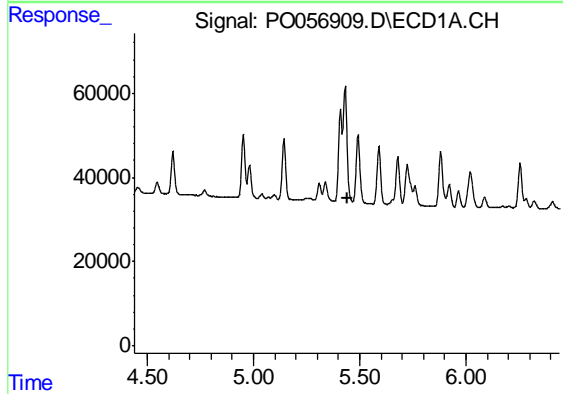
R.T.: 0.000 min
 Exp R.T. : 5.418 min
 Response: 0
 Conc: N.D.

Instrument :
 ECD_O
 ClientSampleId :
 AR1660CCC500



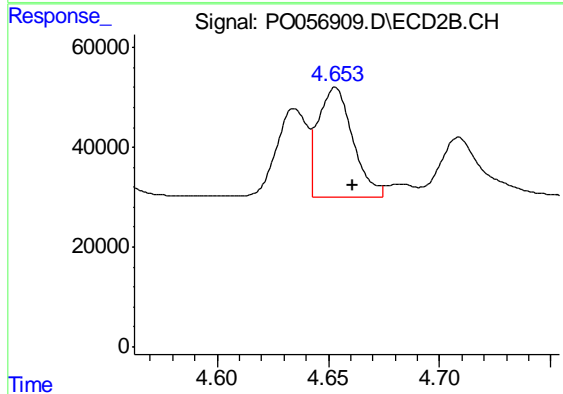
#16 AR-1242-1

R.T.: 4.635 min
 Delta R.T.: -0.008 min
 Response: 172694
 Conc: 139.43 ng/ml



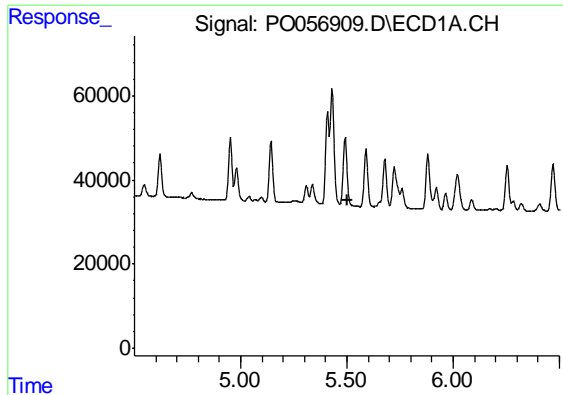
#17 AR-1242-2

R.T.: 0.000 min
 Exp R.T. : 5.440 min
 Response: 0
 Conc: N.D.



#17 AR-1242-2

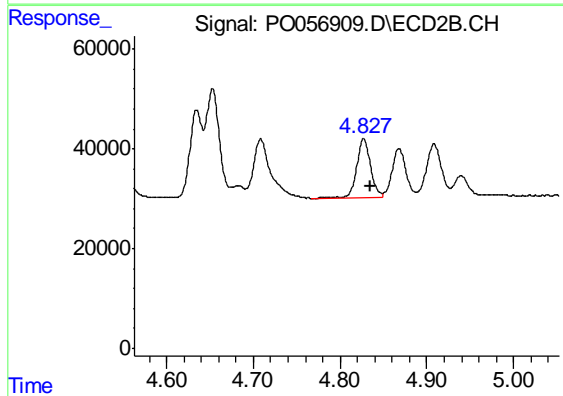
R.T.: 4.653 min
 Delta R.T.: -0.008 min
 Response: 238862
 Conc: 132.82 ng/ml



#18 AR-1242-3

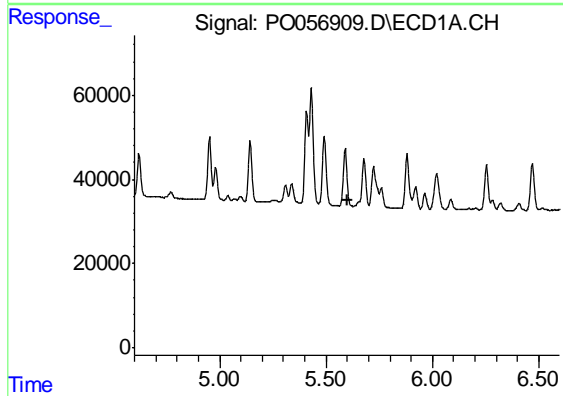
R.T.: 0.000 min
 Exp R.T. : 5.500 min
 Response: 0
 Conc: N.D.

Instrument :
 ECD_O
 ClientSampleId :
 AR1660CCC500



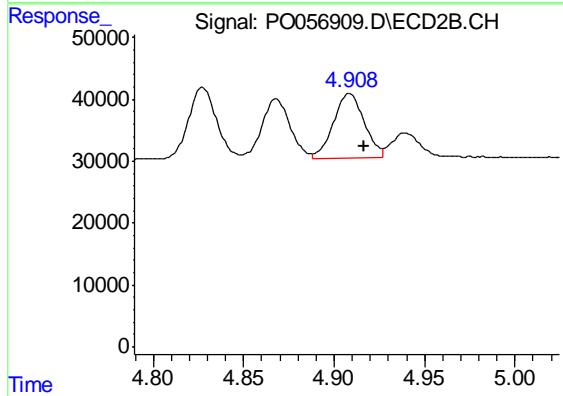
#18 AR-1242-3

R.T.: 4.827 min
 Delta R.T.: -0.008 min
 Response: 132528
 Conc: 134.81 ng/ml



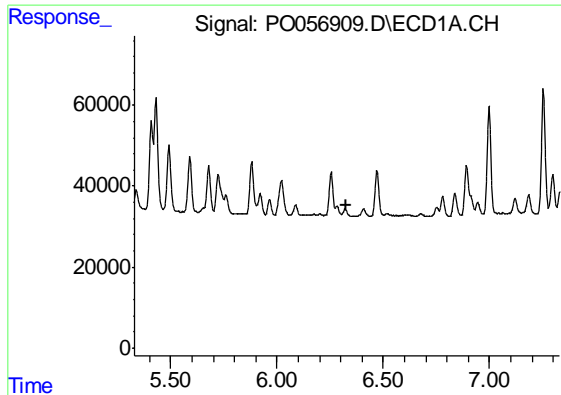
#19 AR-1242-4

R.T.: 0.000 min
 Exp R.T. : 5.599 min
 Response: 0
 Conc: N.D.



#19 AR-1242-4

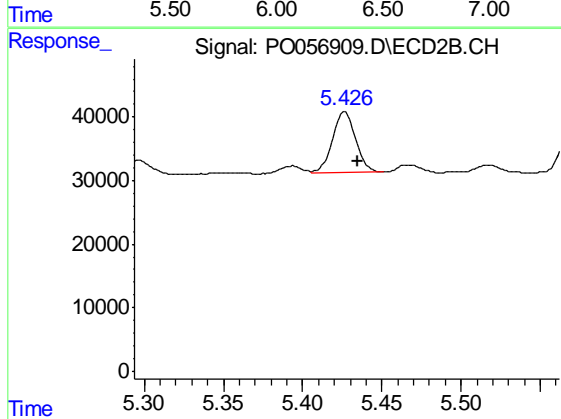
R.T.: 4.908 min
 Delta R.T.: -0.009 min
 Response: 124838
 Conc: 128.29 ng/ml



#20 AR-1242-5

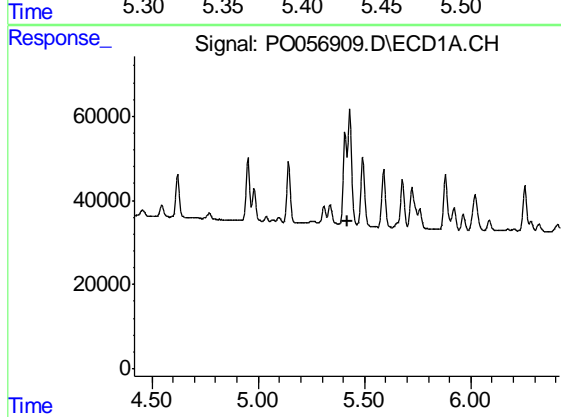
R.T.: 0.000 min
 Exp R.T. : 6.329 min
 Response: 0
 Conc: N.D.

Instrument :
 ECD_O
 ClientSampleId :
 AR1660CCC500



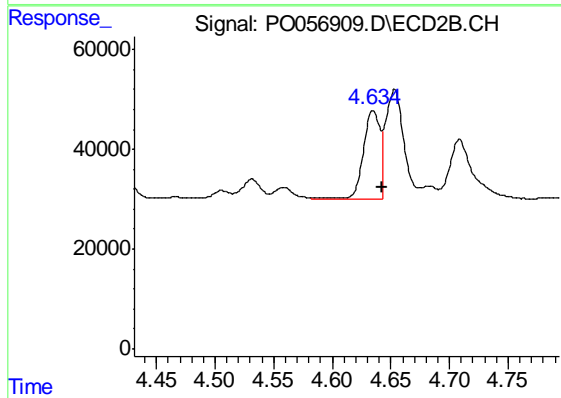
#20 AR-1242-5

R.T.: 5.426 min
 Delta R.T.: -0.009 min
 Response: 97866
 Conc: 82.78 ng/ml



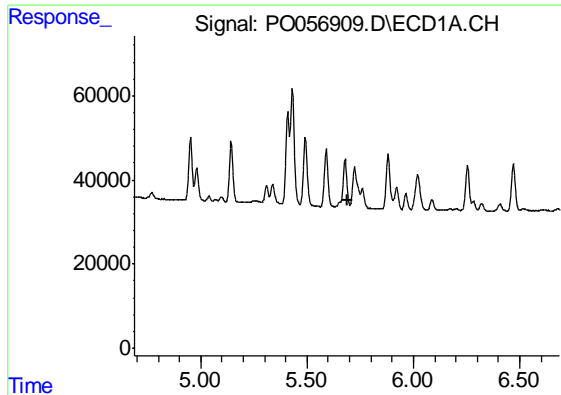
#21 AR-1248-1

R.T.: 0.000 min
 Exp R.T. : 5.418 min
 Response: 0
 Conc: N.D.



#21 AR-1248-1

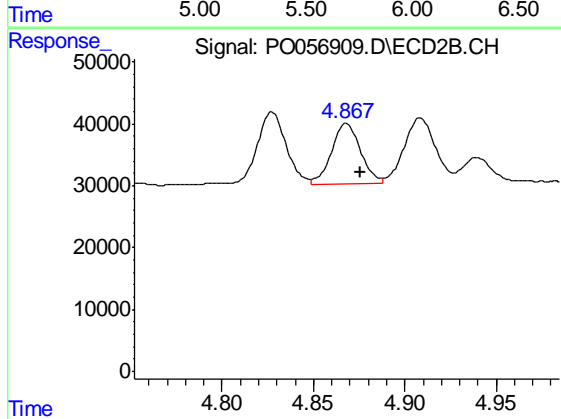
R.T.: 4.635 min
 Delta R.T.: -0.008 min
 Response: 172694
 Conc: 184.40 ng/ml



#22 AR-1248-2

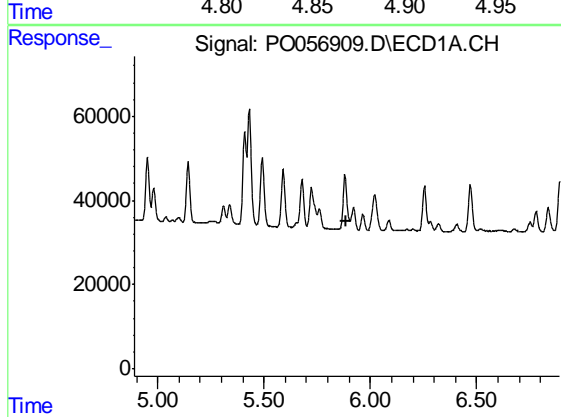
R.T.: 0.000 min
 Exp R.T. : 5.688 min
 Response: 0
 Conc: N.D.

Instrument :
 ECD_O
 ClientSampleId :
 AR1660CCC500



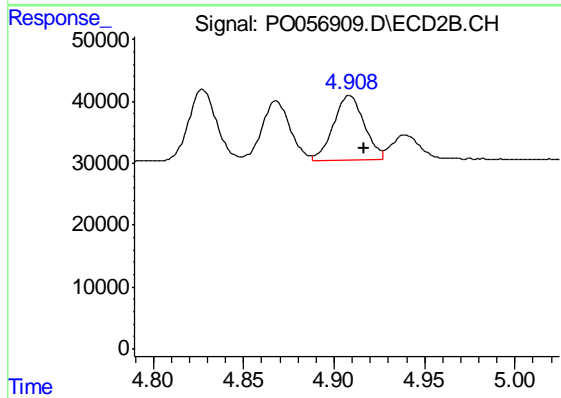
#22 AR-1248-2

R.T.: 4.868 min
 Delta R.T.: -0.008 min
 Response: 106892
 Conc: 84.14 ng/ml



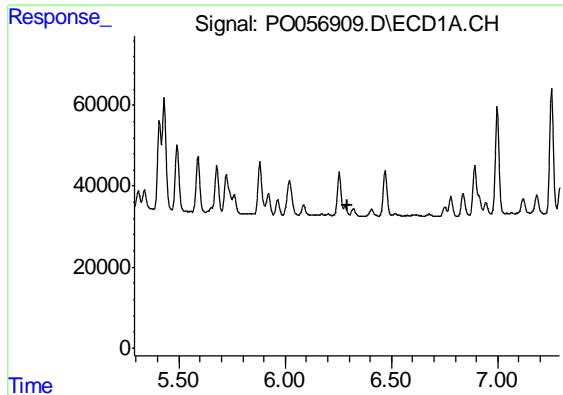
#23 AR-1248-3

R.T.: 0.000 min
 Exp R.T. : 5.890 min
 Response: 0
 Conc: N.D.



#23 AR-1248-3

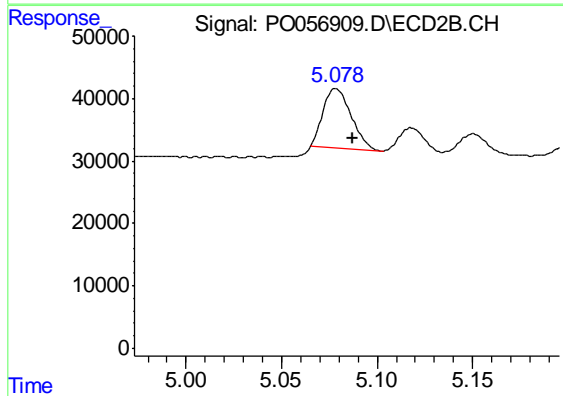
R.T.: 4.908 min
 Delta R.T.: -0.008 min
 Response: 124838
 Conc: 95.60 ng/ml



#24 AR-1248-4

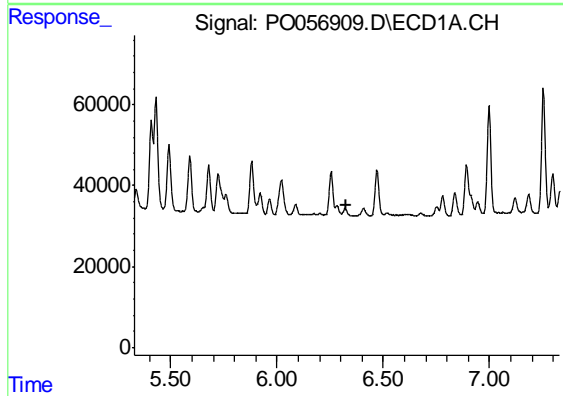
R.T.: 0.000 min
 Exp R.T. : 6.291 min
 Response: 0
 Conc: N.D.

Instrument :
 ECD_O
 ClientSampleId :
 AR1660CCC500



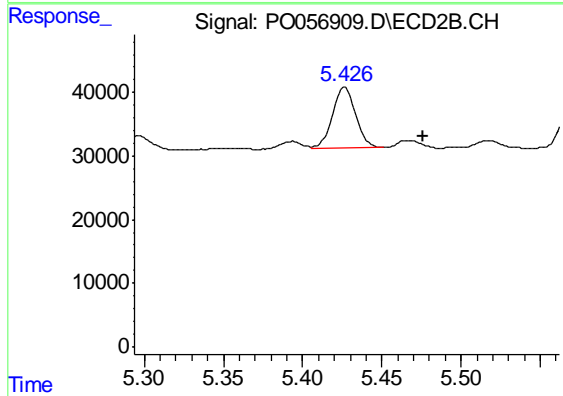
#24 AR-1248-4

R.T.: 5.079 min
 Delta R.T.: -0.009 min
 Response: 99120
 Conc: 62.59 ng/ml



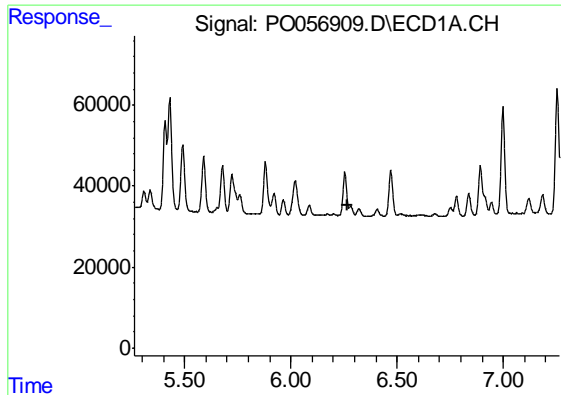
#25 AR-1248-5

R.T.: 0.000 min
 Exp R.T. : 6.329 min
 Response: 0
 Conc: N.D.



#25 AR-1248-5

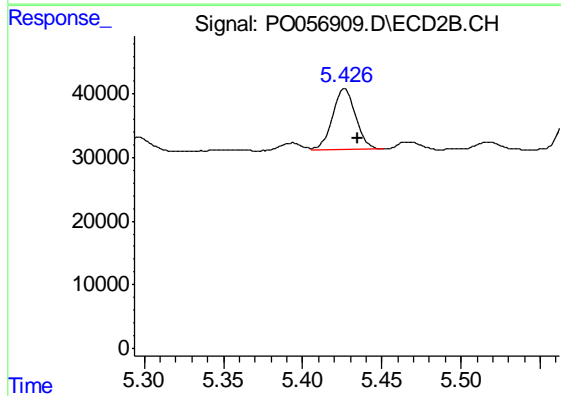
R.T.: 5.426 min
 Delta R.T.: -0.049 min
 Response: 97866
 Conc: 59.13 ng/ml



#26 AR-1254-1

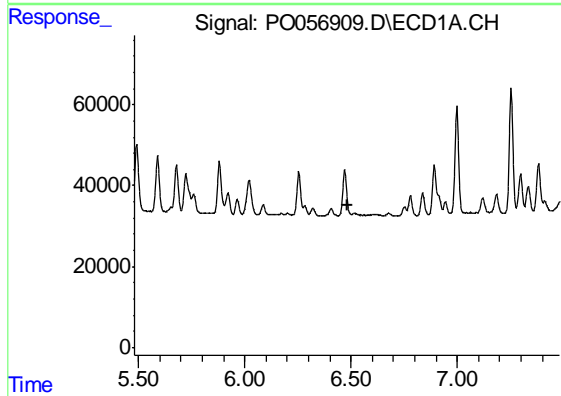
R.T.: 0.000 min
 Exp R.T. : 6.264 min
 Response: 0
 Conc: N.D.

Instrument :
 ECD_O
 ClientSampleId :
 AR1660CCC500



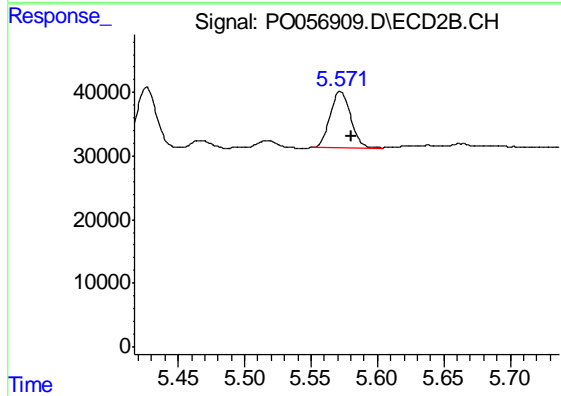
#26 AR-1254-1

R.T.: 5.426 min
 Delta R.T.: -0.008 min
 Response: 97866
 Conc: 37.00 ng/ml



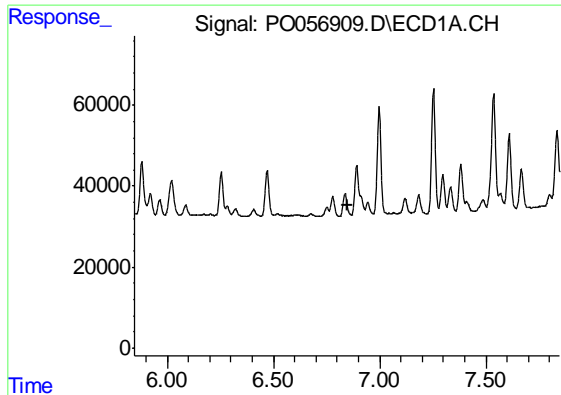
#27 AR-1254-2

R.T.: 0.000 min
 Exp R.T. : 6.481 min
 Response: 0
 Conc: N.D.



#27 AR-1254-2

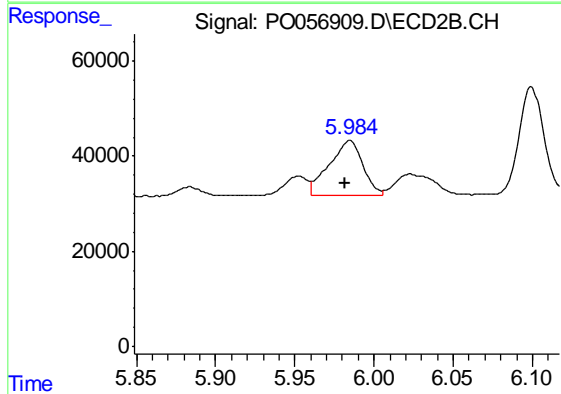
R.T.: 5.572 min
 Delta R.T.: -0.008 min
 Response: 94821
 Conc: 43.98 ng/ml



#28 AR-1254-3

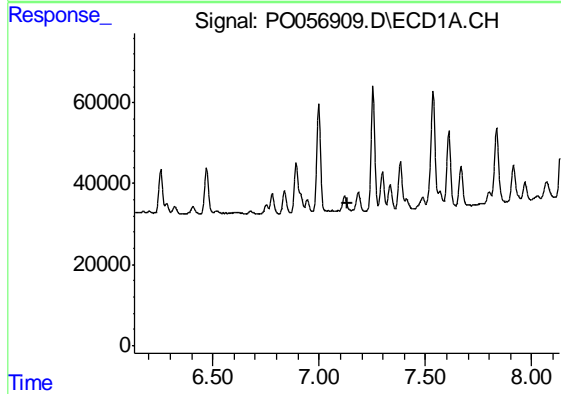
R.T.: 0.000 min
 Exp R.T. : 6.846 min
 Response: 0
 Conc: N.D.

Instrument :
 ECD_O
 ClientSampleId :
 AR1660CCC500



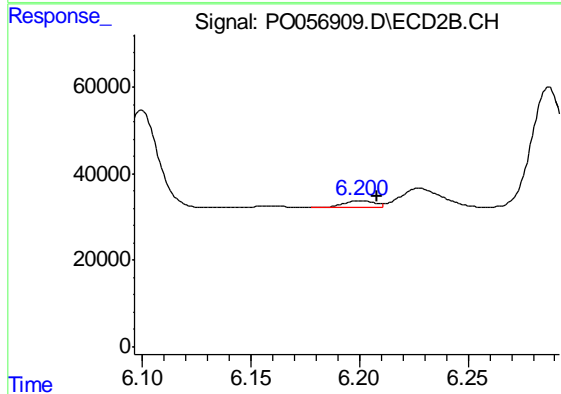
#28 AR-1254-3

R.T.: 5.985 min
 Delta R.T.: 0.003 min
 Response: 169250
 Conc: 46.23 ng/ml



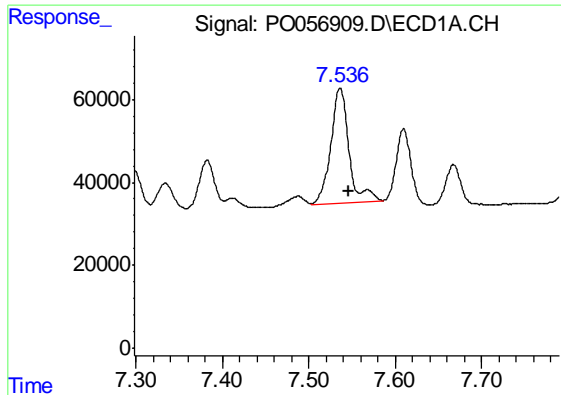
#29 AR-1254-4

R.T.: 0.000 min
 Exp R.T. : 7.131 min
 Response: 0
 Conc: N.D.



#29 AR-1254-4

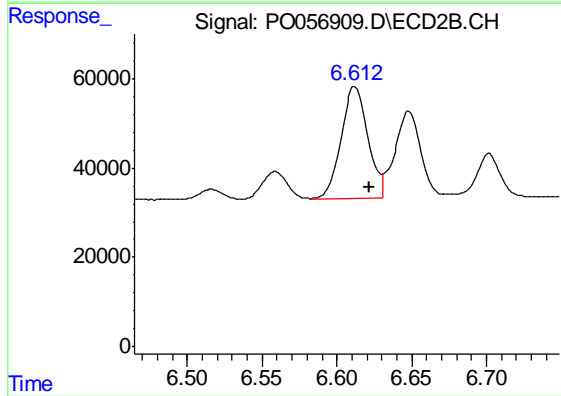
R.T.: 6.200 min
 Delta R.T.: -0.008 min
 Response: 16203
 Conc: 7.38 ng/ml



#30 AR-1254-5

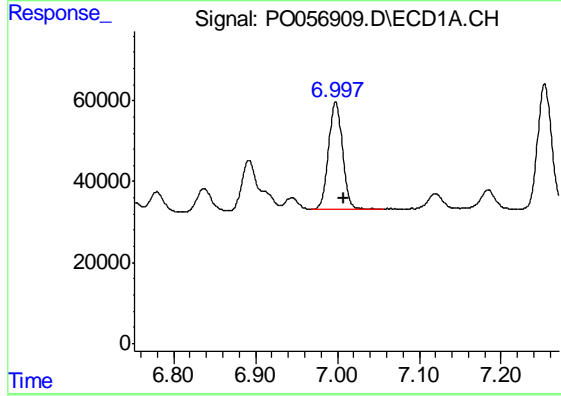
R.T.: 7.536 min
 Delta R.T.: -0.011 min
 Response: 405487
 Conc: 107.68 ng/ml

Instrument :
 ECD_O
 ClientSampleId :
 AR1660CCC500



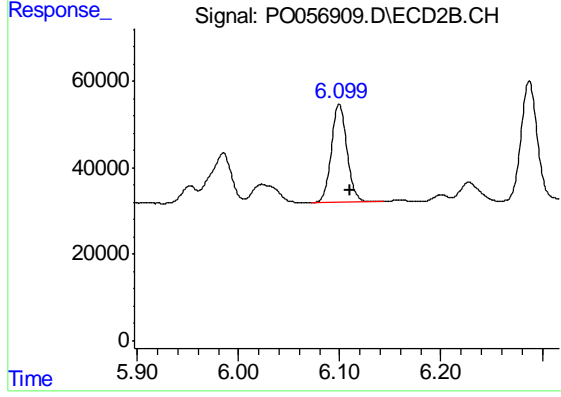
#30 AR-1254-5

R.T.: 6.612 min
 Delta R.T.: -0.010 min
 Response: 314595
 Conc: 99.23 ng/ml



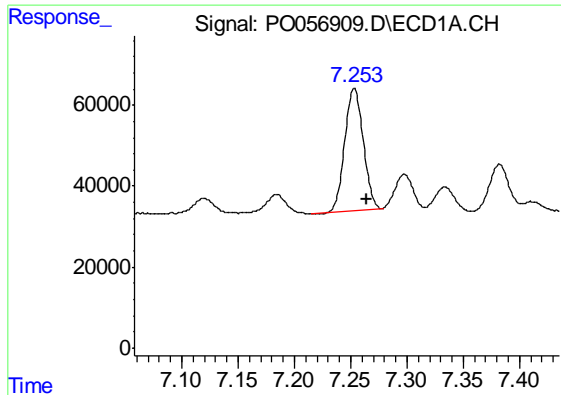
#31 AR-1260-1

R.T.: 6.998 min
 Delta R.T.: -0.010 min
 Response: 316574
 Conc: 123.36 ng/ml



#31 AR-1260-1

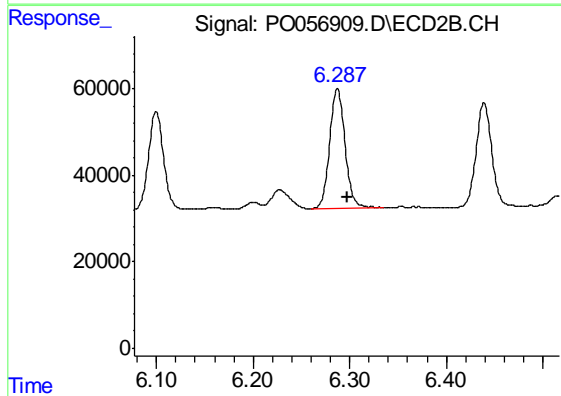
R.T.: 6.100 min
 Delta R.T.: -0.011 min
 Response: 245905
 Conc: 122.93 ng/ml



#32 AR-1260-2

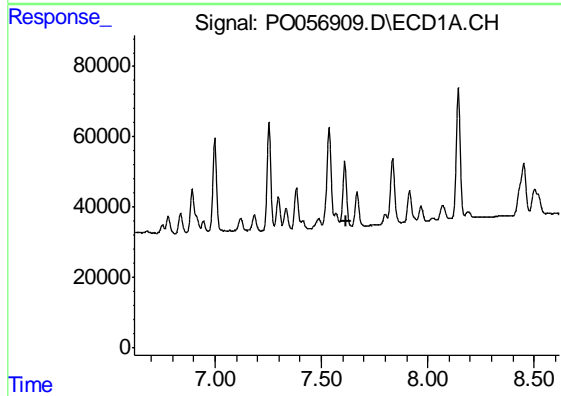
R.T.: 7.253 min
 Delta R.T.: -0.011 min
 Response: 343656
 Conc: 113.64 ng/ml

Instrument :
 ECD_O
 ClientSampleId :
 AR1660CCC500



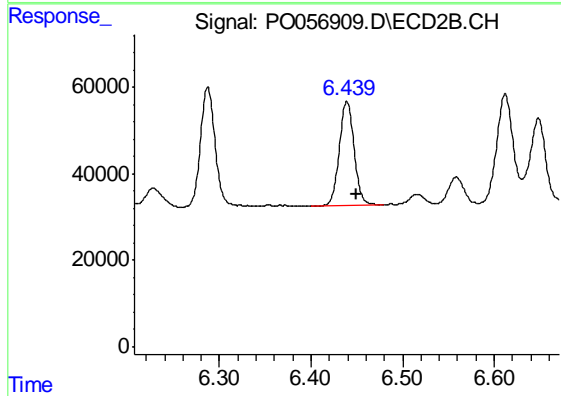
#32 AR-1260-2

R.T.: 6.287 min
 Delta R.T.: -0.010 min
 Response: 304381
 Conc: 123.48 ng/ml



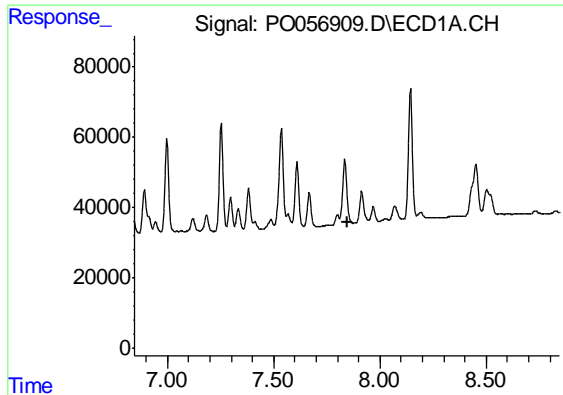
#33 AR-1260-3

R.T.: 0.000 min
 Exp R.T. : 7.620 min
 Response: 0
 Conc: N.D.



#33 AR-1260-3

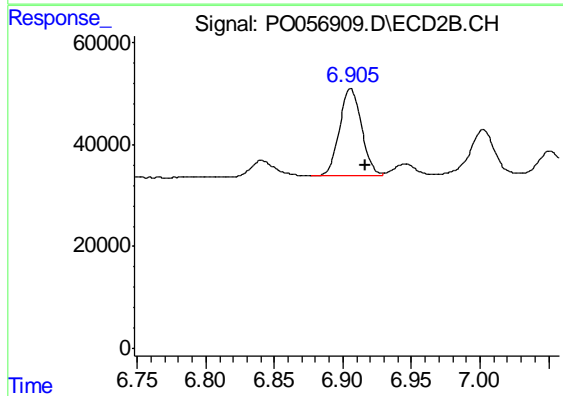
R.T.: 6.439 min
 Delta R.T.: -0.011 min
 Response: 267443
 Conc: 119.22 ng/ml



#34 AR-1260-4

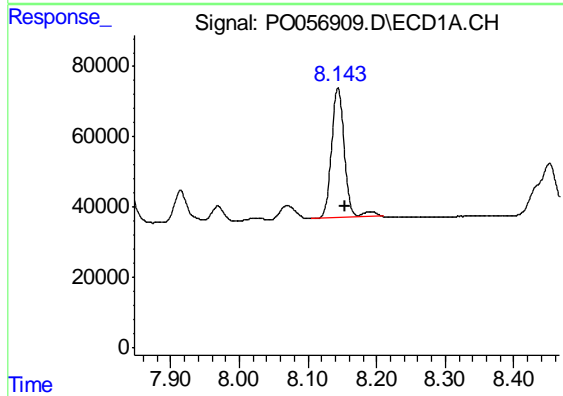
R.T.: 0.000 min
Exp R.T. : 7.845 min
Response: 0
Conc: N.D.

Instrument :
ECD_O
ClientSampled :
AR1660CCC500



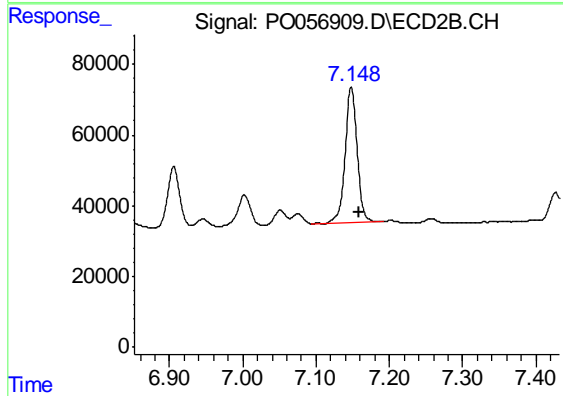
#34 AR-1260-4

R.T.: 6.906 min
Delta R.T.: -0.011 min
Response: 191183
Conc: 102.73 ng/ml



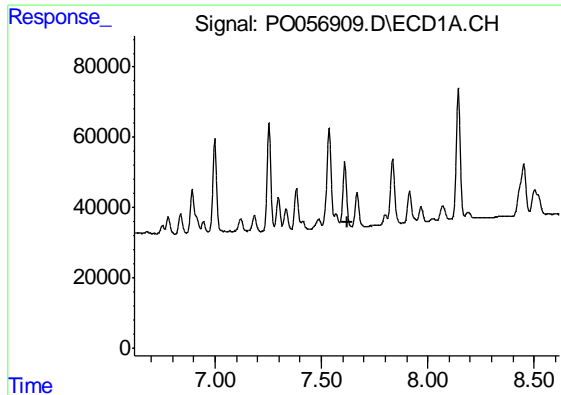
#35 AR-1260-5

R.T.: 8.144 min
Delta R.T.: -0.010 min
Response: 488523
Conc: 102.16 ng/ml



#35 AR-1260-5

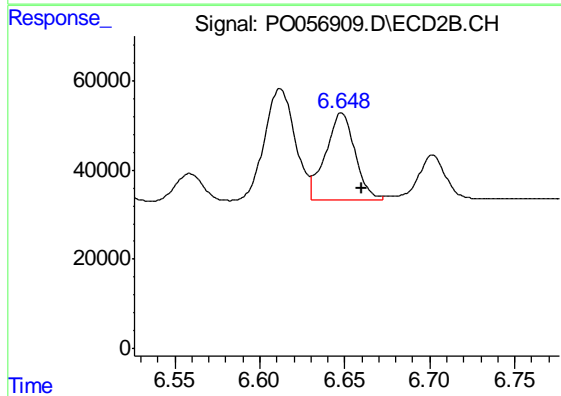
R.T.: 7.148 min
Delta R.T.: -0.010 min
Response: 443368
Conc: 102.81 ng/ml



#36 AR-1262-1

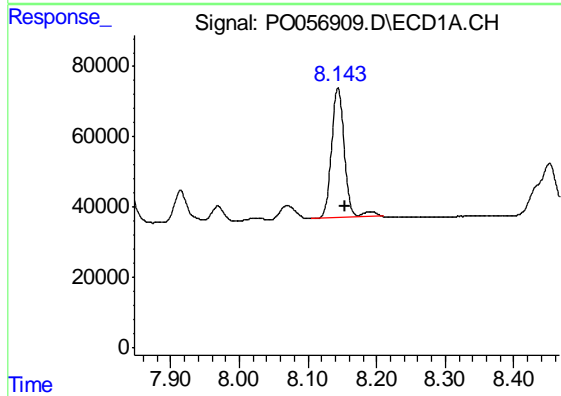
R.T.: 0.000 min
 Exp R.T. : 7.620 min
 Response: 0
 Conc: N.D.

Instrument :
 ECD_O
 ClientSampleId :
 AR1660CCC500



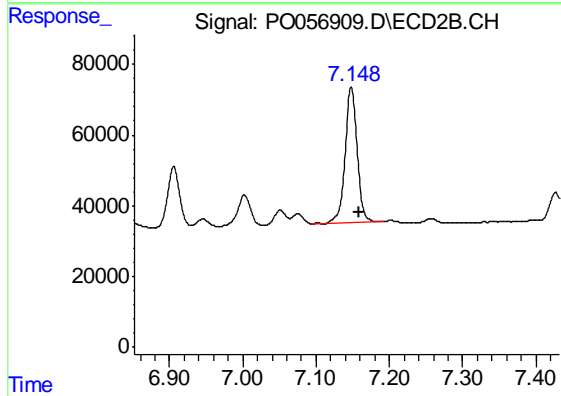
#36 AR-1262-1

R.T.: 6.648 min
 Delta R.T.: -0.012 min
 Response: 234596
 Conc: 56.20 ng/ml



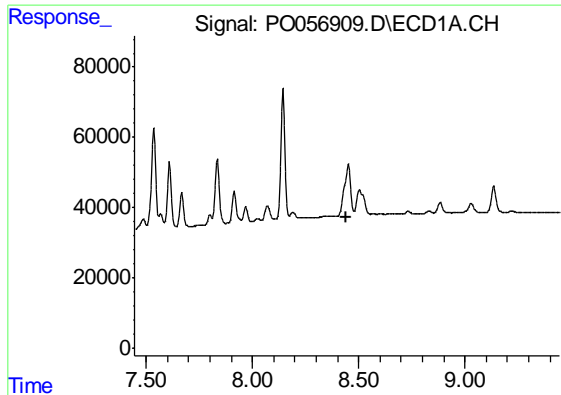
#37 AR-1262-2

R.T.: 8.144 min
 Delta R.T.: -0.010 min
 Response: 488523
 Conc: 64.08 ng/ml



#37 AR-1262-2

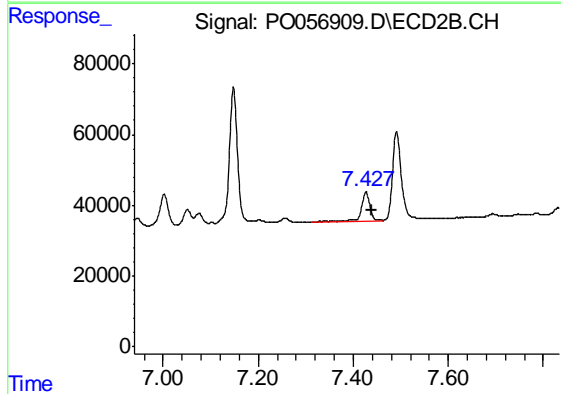
R.T.: 7.148 min
 Delta R.T.: -0.010 min
 Response: 443368
 Conc: 64.53 ng/ml



#38 AR-1262-3

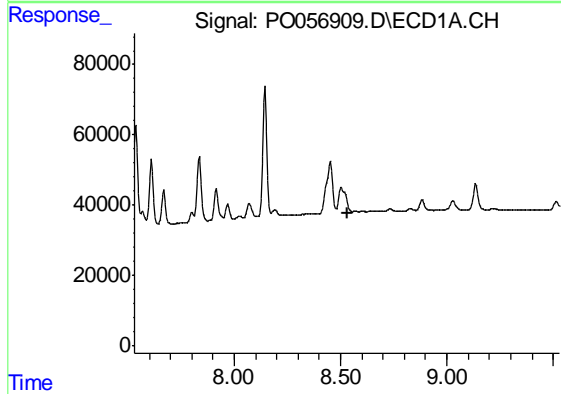
R.T.: 0.000 min
 Exp R.T. : 8.445 min
 Response: 0
 Conc: N.D.

Instrument :
 ECD_O
 ClientSampleId :
 AR1660CCC500



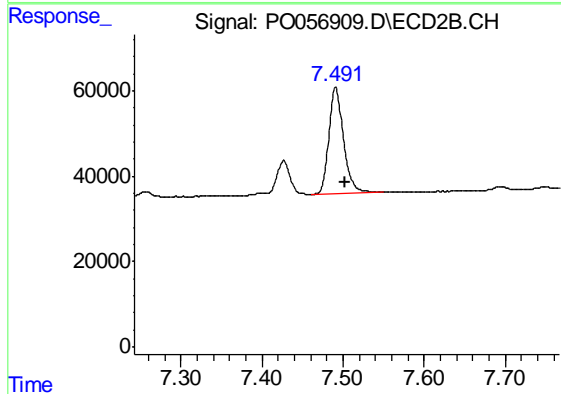
#38 AR-1262-3

R.T.: 7.427 min
 Delta R.T.: -0.011 min
 Response: 97787
 Conc: 33.11 ng/ml



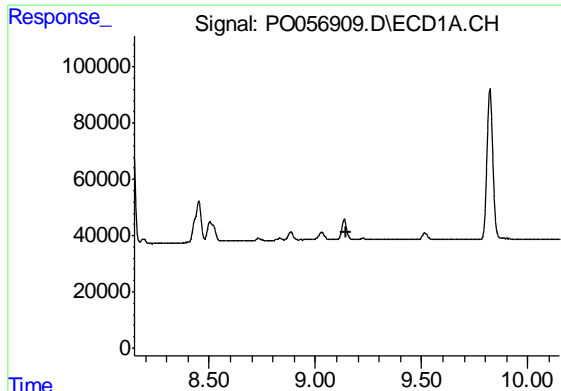
#39 AR-1262-4

R.T.: 0.000 min
 Exp R.T. : 8.530 min
 Response: 0
 Conc: N.D.



#39 AR-1262-4

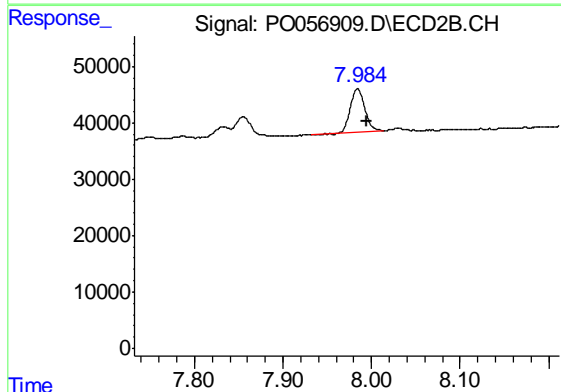
R.T.: 7.491 min
 Delta R.T.: -0.012 min
 Response: 314970
 Conc: 60.45 ng/ml



#40 AR-1262-5

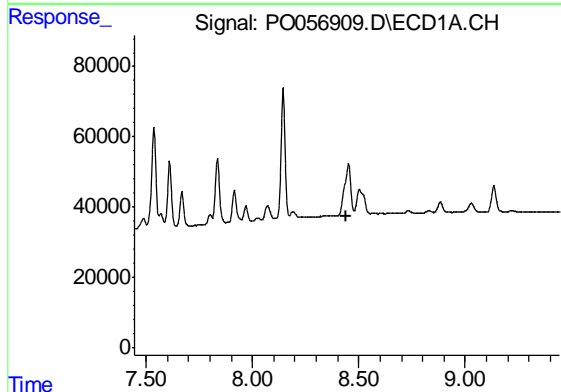
R.T.: 0.000 min
 Exp R.T. : 9.148 min
 Response: 0
 Conc: N.D.

Instrument :
 ECD_O
 ClientSampleId :
 AR1660CCC500



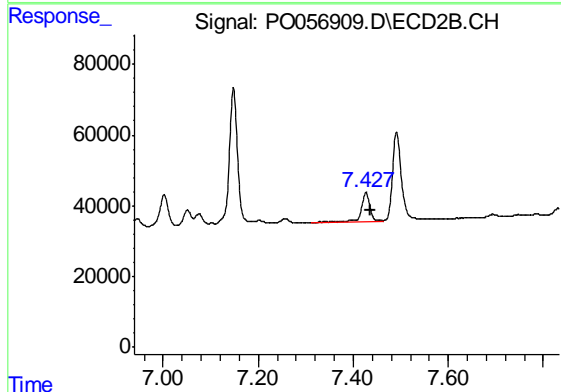
#40 AR-1262-5

R.T.: 7.984 min
 Delta R.T.: -0.011 min
 Response: 86537
 Conc: 37.27 ng/ml



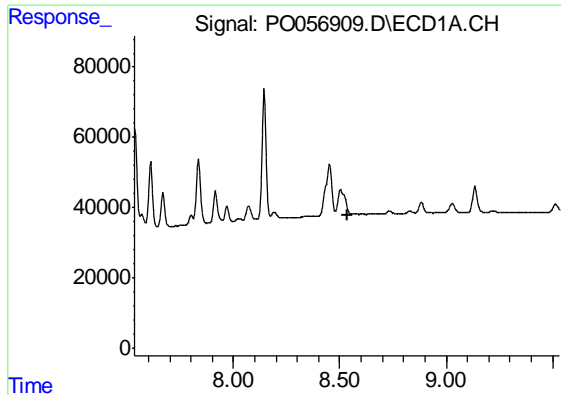
#41 AR-1268-1

R.T.: 0.000 min
 Exp R.T. : 8.444 min
 Response: 0
 Conc: N.D.



#41 AR-1268-1

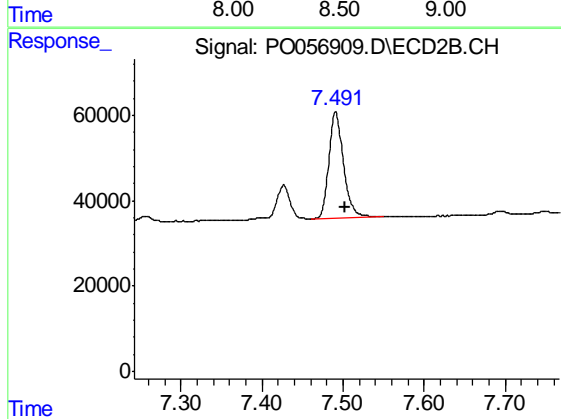
R.T.: 7.427 min
 Delta R.T.: -0.010 min
 Response: 97787
 Conc: 13.10 ng/ml



#42 AR-1268-2

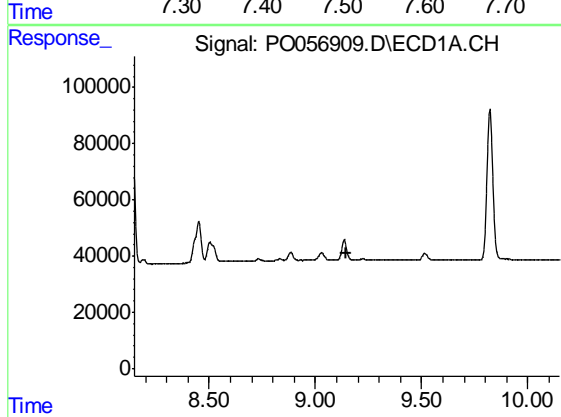
R.T.: 0.000 min
 Exp R.T. : 8.534 min
 Response: 0
 Conc: N.D.

Instrument :
 ECD_O
 ClientSampleId :
 AR1660CCC500



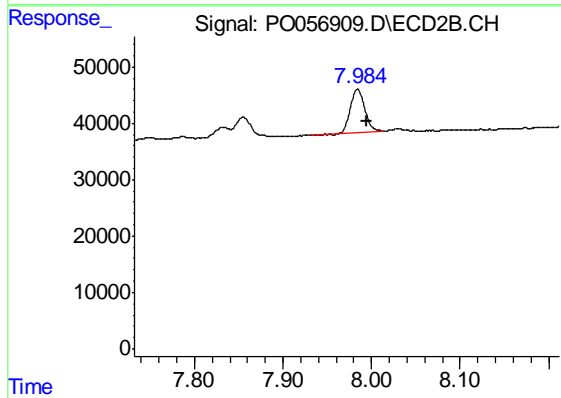
#42 AR-1268-2

R.T.: 7.491 min
 Delta R.T.: -0.012 min
 Response: 314970
 Conc: 45.10 ng/ml



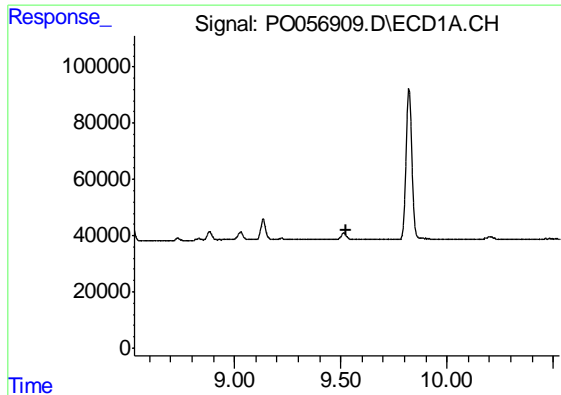
#44 AR-1268-4

R.T.: 0.000 min
 Exp R.T. : 9.148 min
 Response: 0
 Conc: N.D.



#44 AR-1268-4

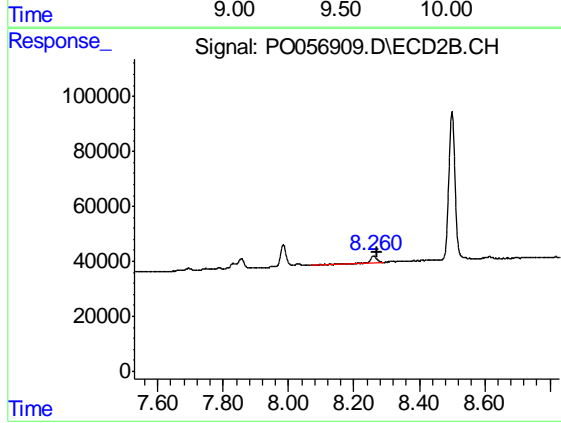
R.T.: 7.984 min
 Delta R.T.: -0.010 min
 Response: 86537
 Conc: 37.07 ng/ml



#45 AR-1268-5

R.T.: 0.000 min
Exp R.T. : 9.529 min
Response: 0
Conc: N.D.

Instrument :
ECD_O
ClientSampleId :
AR1660CCC500



#45 AR-1268-5

R.T.: 8.260 min
Delta R.T.: -0.012 min
Response: 27751
Conc: 1.60 ng/ml