

Data Path : Z:\PESTPCBSRV\HPCHEM1\ECD O\Data\PO060618\
 Data File : PO045537.D
 Signal(s) : Signal #1: ECD1A.CH Signal #2: ECD2B.CH
 Acq On : 05 Jun 2018 16:24
 Operator : SM/UA
 Sample : J2676-35
 Misc :
 ALS Vial : 18 Sample Multiplier: 1

Instrument :
 ECD_O
 ClientSampleId :

Integration File signal 1: autoint1.e
 Integration File signal 2: autoint2.e
 Quant Time: Jun 05 17:27:36 2018
 Quant Method : Z:\PESTPCBSRV\HPCHEM1\ECD_O\methods\PO053018.M
 Quant Title : GC EXTRACTABLES
 QLast Update : Thu May 31 04:53:22 2018
 Response via : Initial Calibration
 Integrator: ChemStation 6890 Scale Mode: Small noise peaks clipped

Volume Inj. : 2 µl
 Signal #1 Phase : ZB-MR1 Signal #2 Phase: ZB-MR2
 Signal #1 Info : 30Mx0.32mmx 0.50µ Signal #2 Info : 30M x 0.32mm x 0.25µm

Compound	RT#1	RT#2	Resp#1	Resp#2	ng/ml	ng/ml

System Monitoring Compounds						
1) SA Tetrachlo...	3.994	3.271	4439723	5882011	21.256	21.212
2) SA Decachlor...	9.272	7.990	3004387	3397720	13.081	12.055
Target Compounds						
4) L1 AR-1016-2	5.253	0.000	539815	0	80.897	N.D. #
5) L1 AR-1016-3	5.253	0.000	539815	0	96.473	N.D. #
6) L1 AR-1016-4	5.753	4.779	386757	586484	66.608	78.778
7) L1 AR-1016-5	5.929	5.058	2586655	5437925	514.762	725.274 #
12) L3 AR-1232-2	5.045	0.000	449749	0	136.591	N.D. #
13) L3 AR-1232-3	0.000	4.373	0	593056	N.D.	113.761 #
14) L3 AR-1232-4	5.253	0.000	539815	0	157.735	N.D. #
15) L3 AR-1232-5	5.253	0.000	539815	0	200.882	N.D. #
18) L4 AR-1242-3	5.253	0.000	539815	0	121.363	N.D. #
20) L4 AR-1242-5	5.753	4.779	386757	586484	79.843	89.884
21) L5 AR-1248-1	0.000	4.779	0	586484	N.D.	55.257 #
22) L5 AR-1248-2	5.753	4.805	386757	754978	62.120	73.371
23) L5 AR-1248-3	5.947	5.058	3374863	5437925	389.249	338.174
24) L5 AR-1248-4	5.947	5.058	3374863	5437925	381.230	405.865
25) L5 AR-1248-5	6.184	5.533	4061570	228418	727.317	31.748 #
26) L6 AR-1254-1	6.140	5.058	689775	5437925	49.876	293.450 #
27) L6 AR-1254-2	6.396	5.181	2752325	1698664	286.412	105.360 #
28) L6 AR-1254-3	6.506	5.533	1271416	228418	80.693	8.864 #
30) L6 AR-1254-5	0.000	6.140	0	304515	N.D.	25.423 #
32) L7 AR-1260-2	6.889	5.894	1205690	2105876	79.235	99.675 #
36) L8 AR-1262-1	0.000	5.894	0	2105876	N.D.	111.249 #
37) L8 AR-1262-2	6.889	0.000	1205690	0	87.653	N.D. #

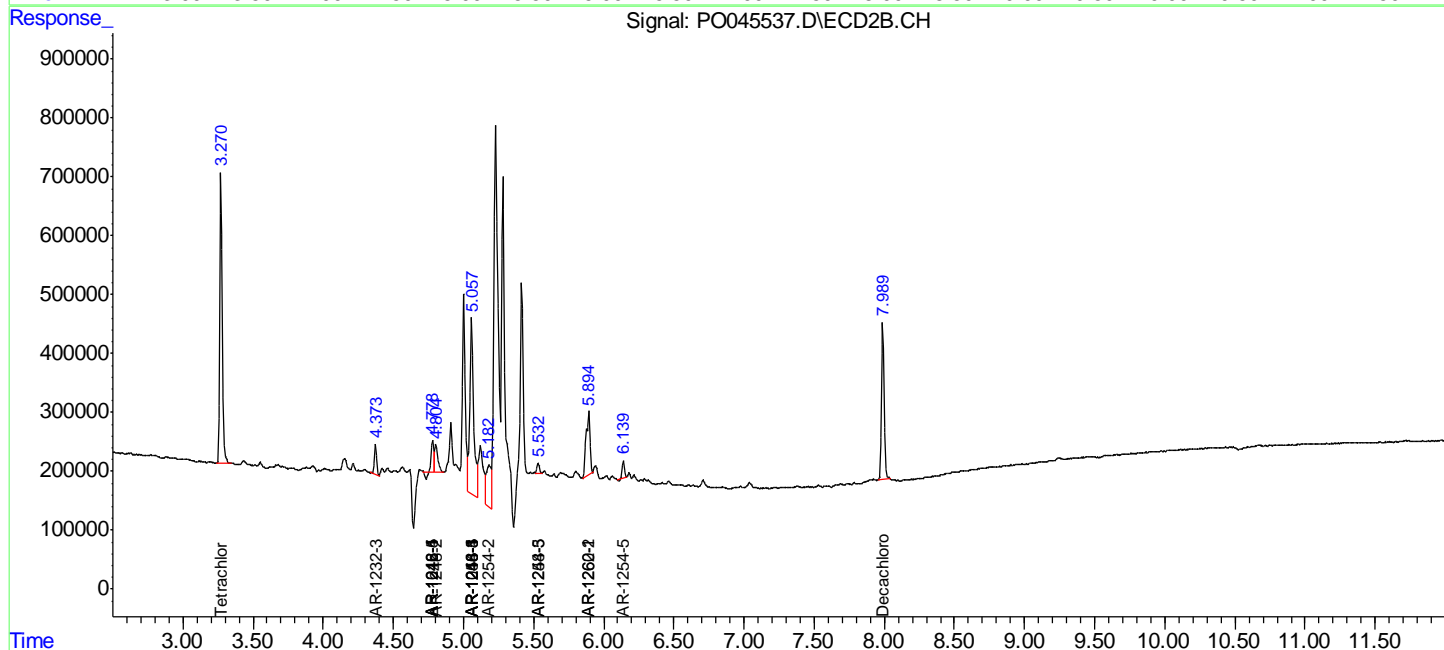
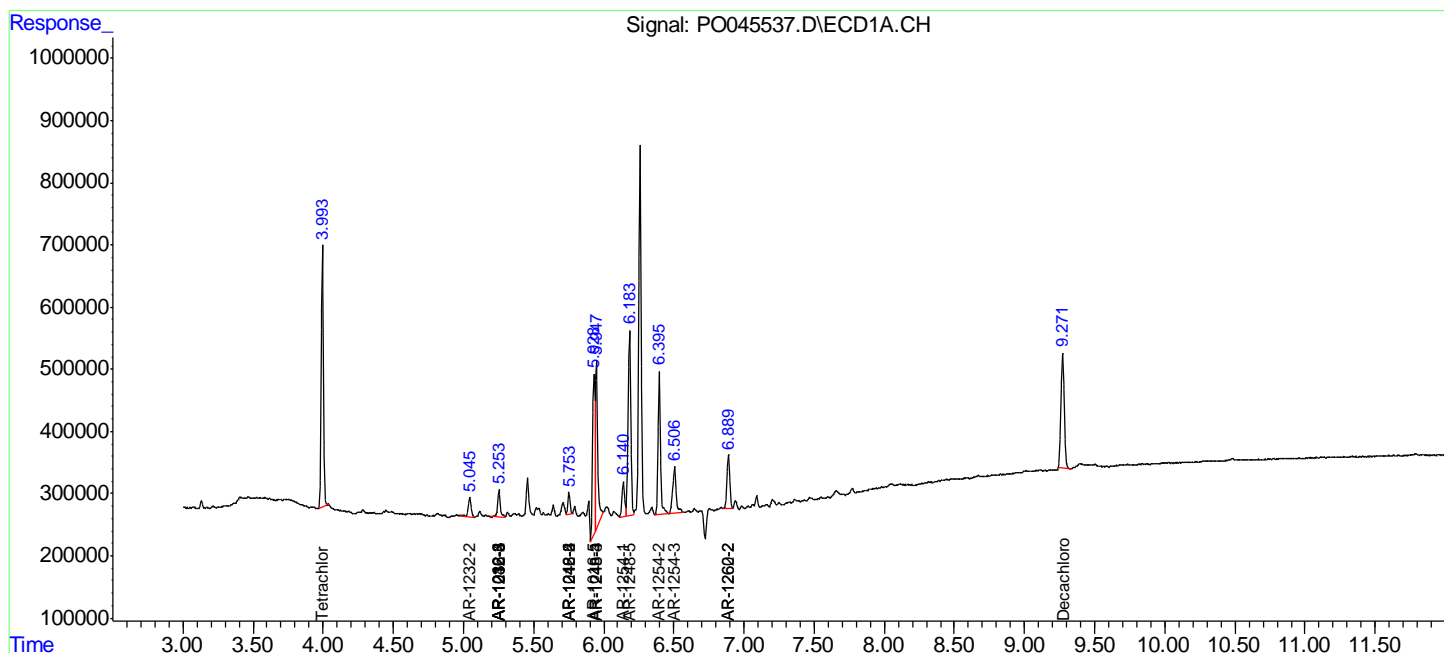
(f)=RT Delta > 1/2 Window (#)=Amounts differ by > 25% (m)=manual int.

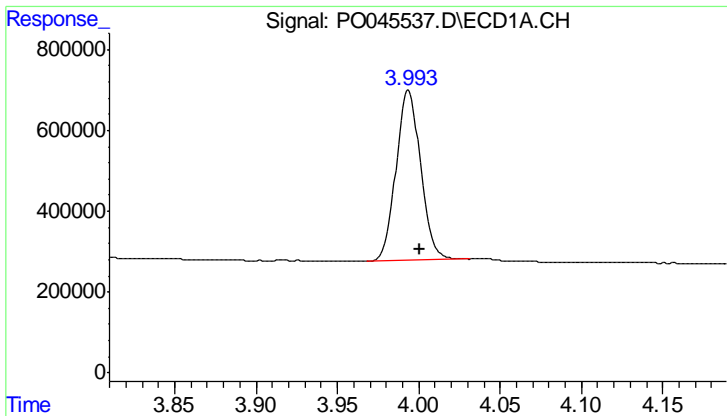
Data Path : Z:\PESTPCBSRV\HPCHEM1\ECD O\Data\PO060618\
 Data File : PO045537.D
 Signal(s) : Signal #1: ECD1A.CH Signal #2: ECD2B.CH
 Acq On : 05 Jun 2018 16:24
 Operator : SM/UA
 Sample : J2676-35
 Misc :
 ALS Vial : 18 Sample Multiplier: 1

Instrument :
 ECD_O
 ClientSampled :

Integration File signal 1: autoint1.e
 Integration File signal 2: autoint2.e
 Quant Time: Jun 05 17:27:36 2018
 Quant Method : Z:\PESTPCBSRV\HPCHEM1\ECD_O\methods\PO053018.M
 Quant Title : GC EXTRACTABLES
 QLast Update : Thu May 31 04:53:22 2018
 Response via : Initial Calibration
 Integrator: ChemStation 6890 Scale Mode: Small noise peaks clipped

Volume Inj. : 2 ul
 Signal #1 Phase : ZB-MR1 Signal #2 Phase: ZB-MR2
 Signal #1 Info : 30Mx0.32mmx 0.50µ Signal #2 Info : 30M x 0.32mm x 0.25µm

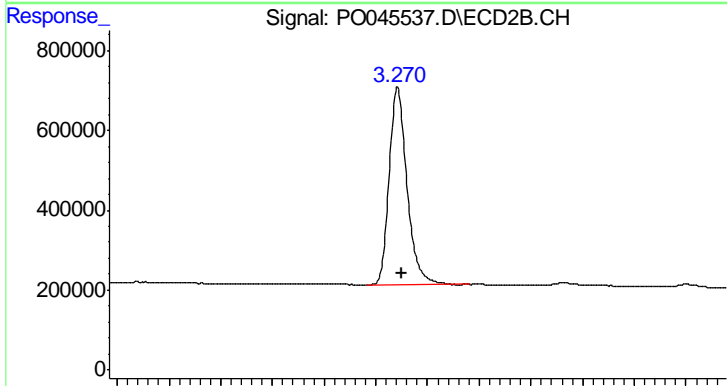




#1 Tetrachloro-m-xylene

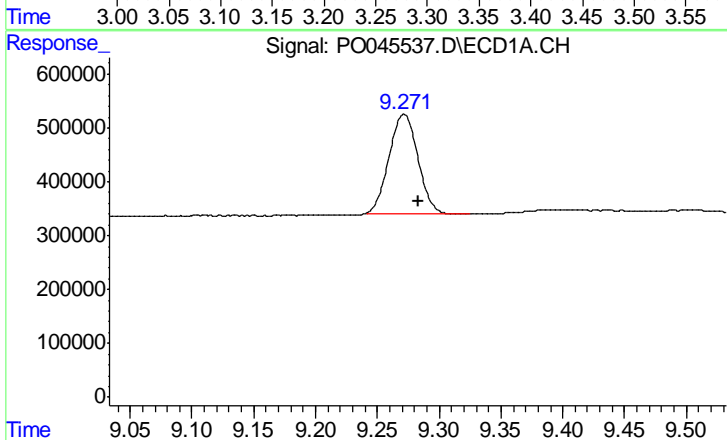
R.T.: 3.994 min
 Delta R.T.: -0.007 min
 Response: 4439723
 Conc: 21.26 ng/ml

Instrument :
 ECD_O
 ClientSampled :



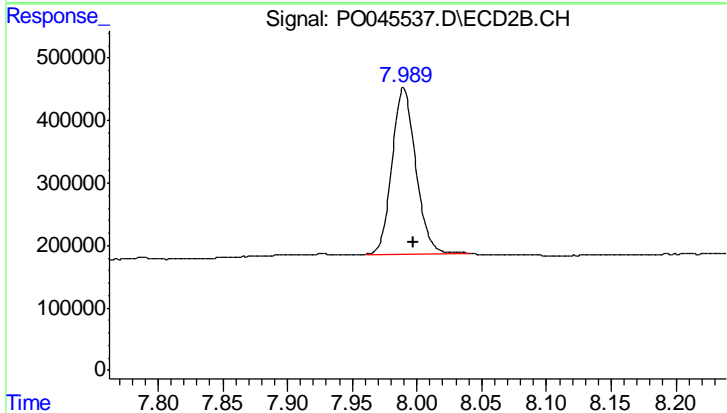
#1 Tetrachloro-m-xylene

R.T.: 3.271 min
 Delta R.T.: -0.004 min
 Response: 5882011
 Conc: 21.21 ng/ml



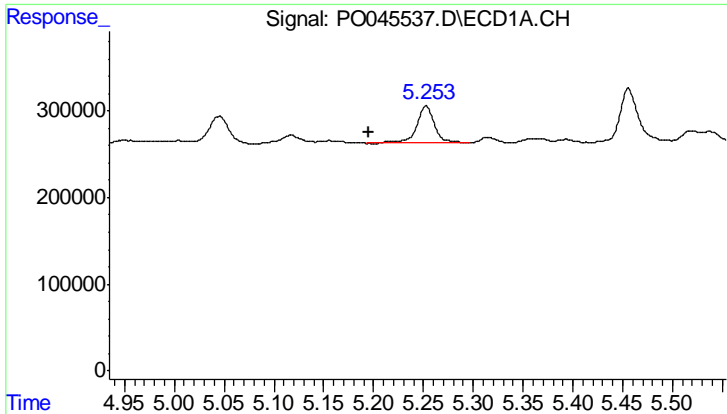
#2 Decachlorobiphenyl

R.T.: 9.272 min
 Delta R.T.: -0.012 min
 Response: 3004387
 Conc: 13.08 ng/ml



#2 Decachlorobiphenyl

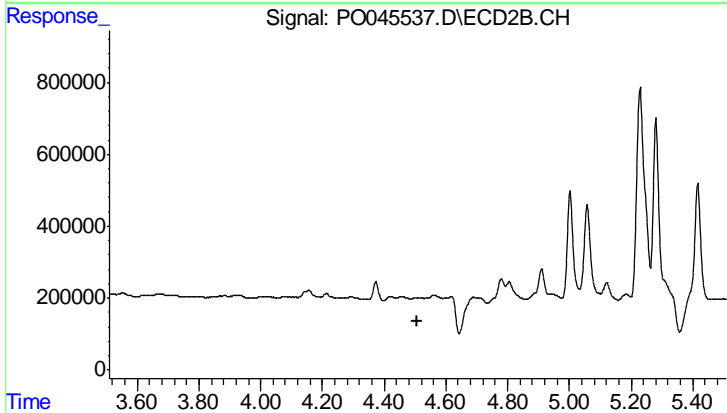
R.T.: 7.990 min
 Delta R.T.: -0.008 min
 Response: 3397720
 Conc: 12.06 ng/ml



#4 AR-1016-2

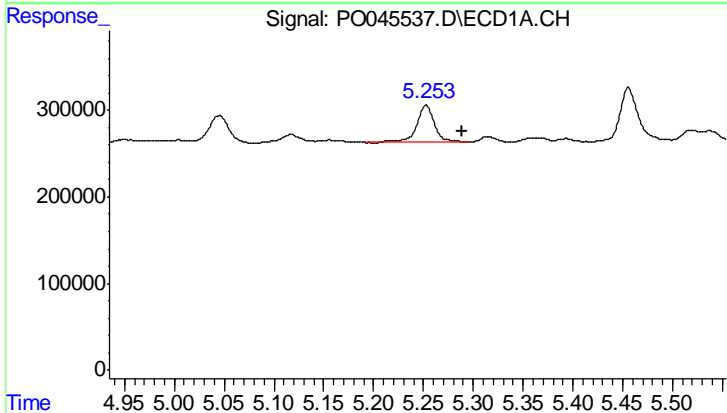
R.T.: 5.253 min
 Delta R.T.: 0.058 min
 Response: 539815
 Conc: 80.90 ng/ml

Instrument :
 ECD_O
 ClientSampled :



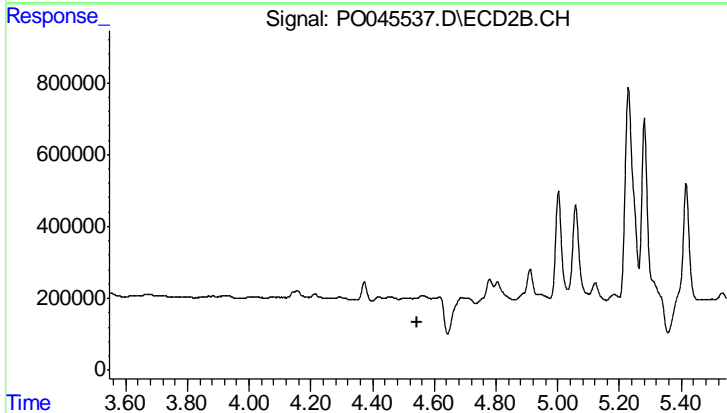
#4 AR-1016-2

R.T.: 0.000 min
 Exp R.T. : 4.509 min
 Response: 0
 Conc: N.D.



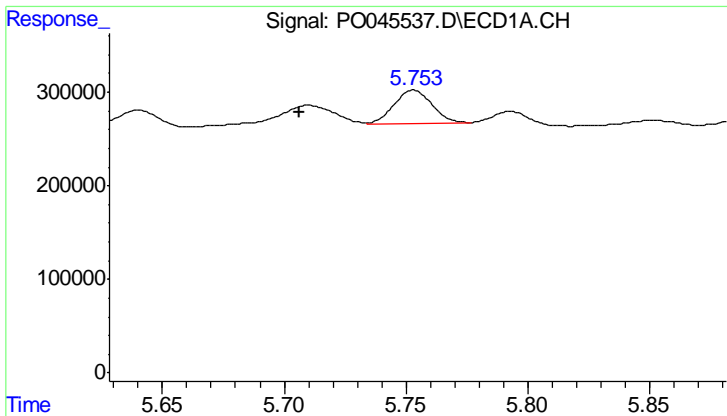
#5 AR-1016-3

R.T.: 5.253 min
 Delta R.T.: -0.036 min
 Response: 539815
 Conc: 96.47 ng/ml



#5 AR-1016-3

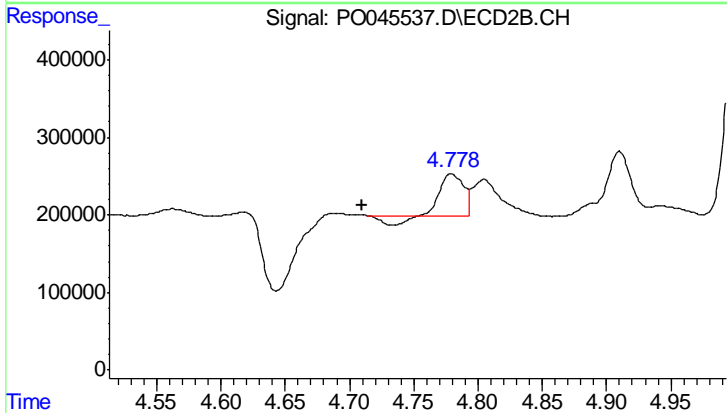
R.T.: 0.000 min
 Exp R.T. : 4.547 min
 Response: 0
 Conc: N.D.



#6 AR-1016-4

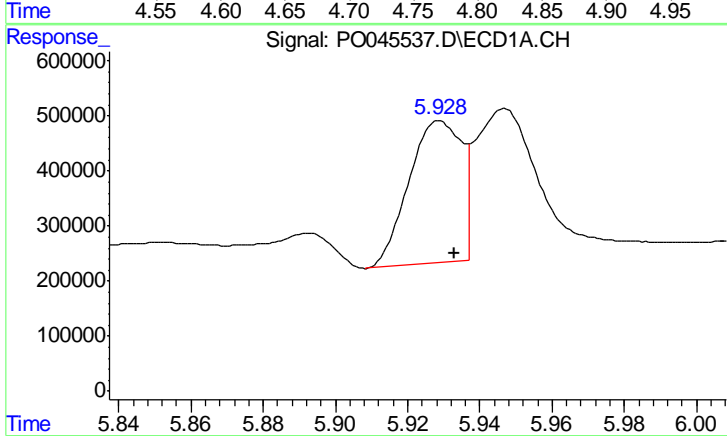
R.T.: 5.753 min
 Delta R.T.: 0.047 min
 Response: 386757
 Conc: 66.61 ng/ml

Instrument :
 ECD_O
 ClientSampled :



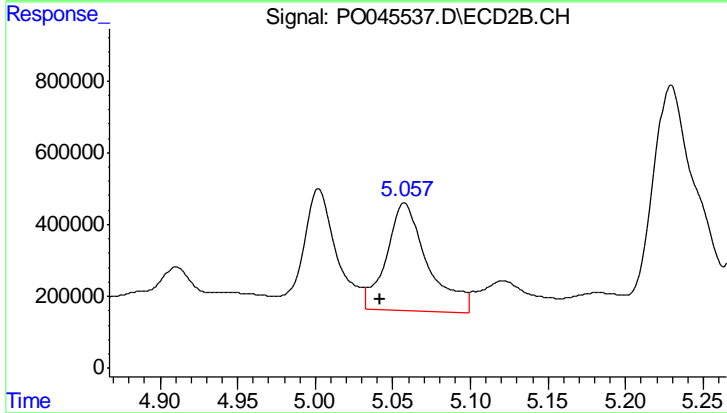
#6 AR-1016-4

R.T.: 4.779 min
 Delta R.T.: 0.069 min
 Response: 586484
 Conc: 78.78 ng/ml



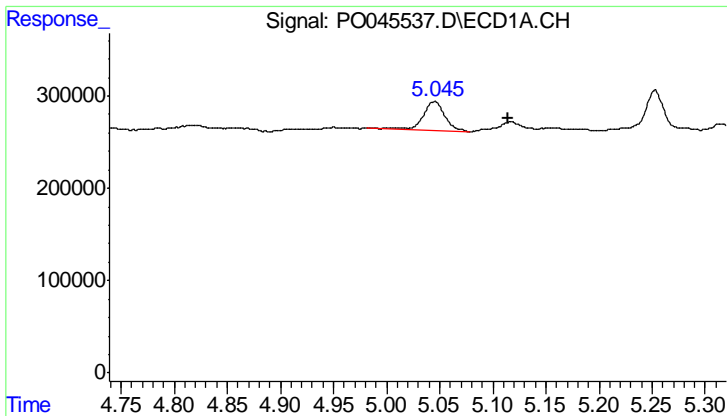
#7 AR-1016-5

R.T.: 5.929 min
 Delta R.T.: -0.004 min
 Response: 2586655
 Conc: 514.76 ng/ml



#7 AR-1016-5

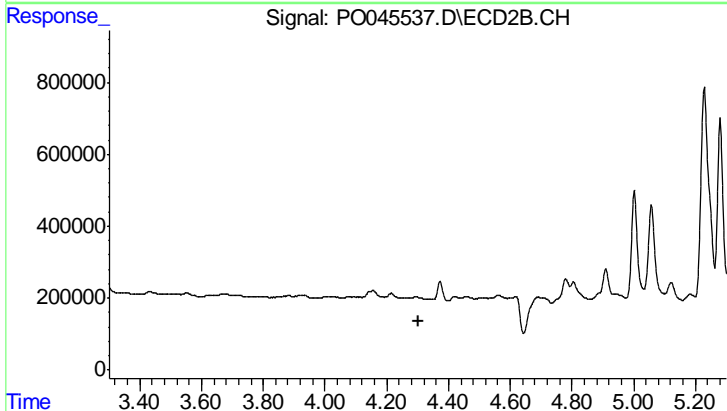
R.T.: 5.058 min
 Delta R.T.: 0.016 min
 Response: 5437925
 Conc: 725.27 ng/ml



#12 AR-1232-2

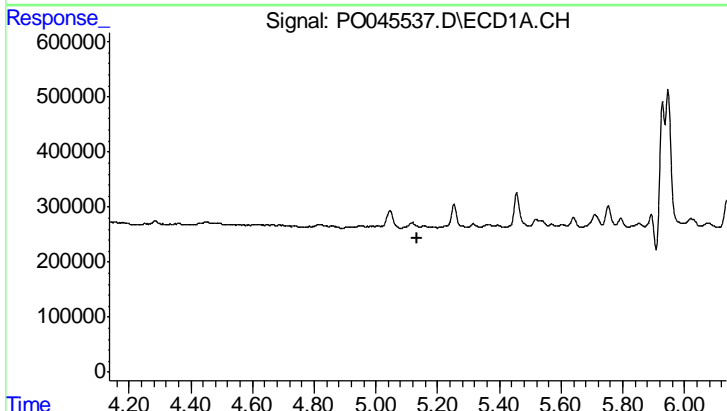
R.T.: 5.045 min
 Delta R.T.: -0.070 min
 Response: 449749
 Conc: 136.59 ng/ml

Instrument :
 ECD_O
 ClientSampled :



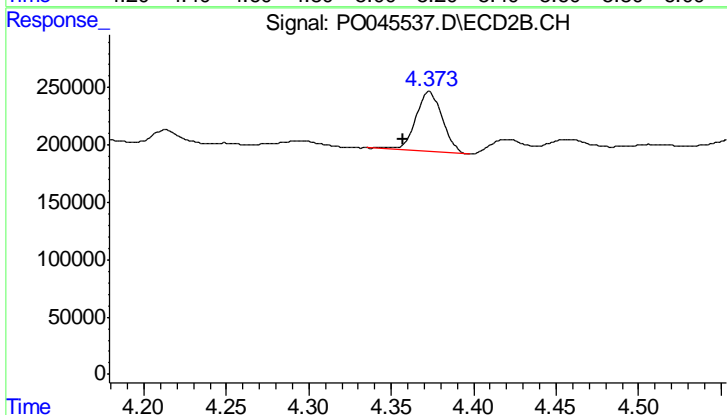
#12 AR-1232-2

R.T.: 0.000 min
 Exp R.T.: 4.301 min
 Response: 0
 Conc: N.D.



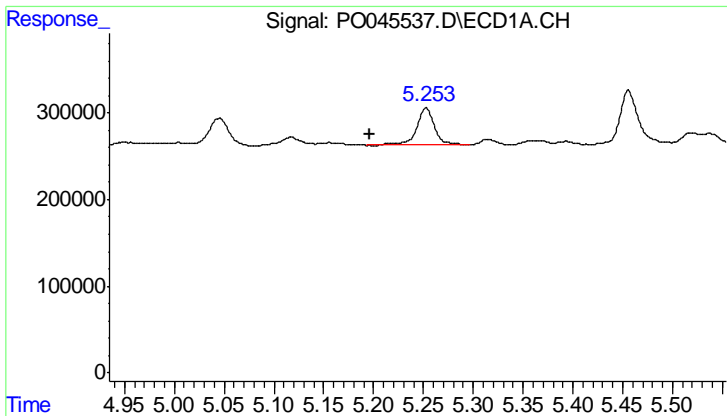
#13 AR-1232-3

R.T.: 0.000 min
 Exp R.T.: 5.136 min
 Response: 0
 Conc: N.D.



#13 AR-1232-3

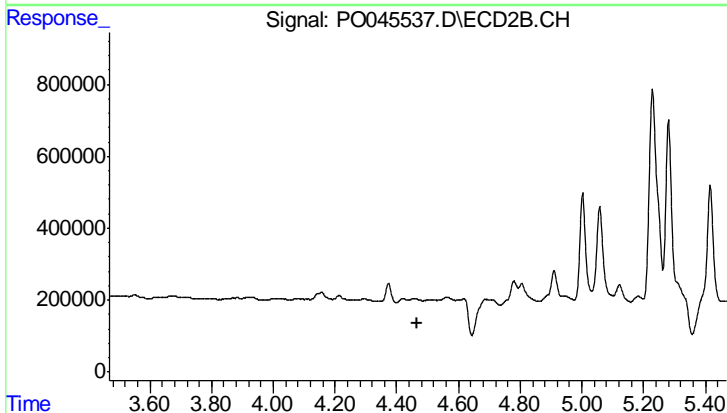
R.T.: 4.373 min
 Delta R.T.: 0.016 min
 Response: 593056
 Conc: 113.76 ng/ml



#14 AR-1232-4

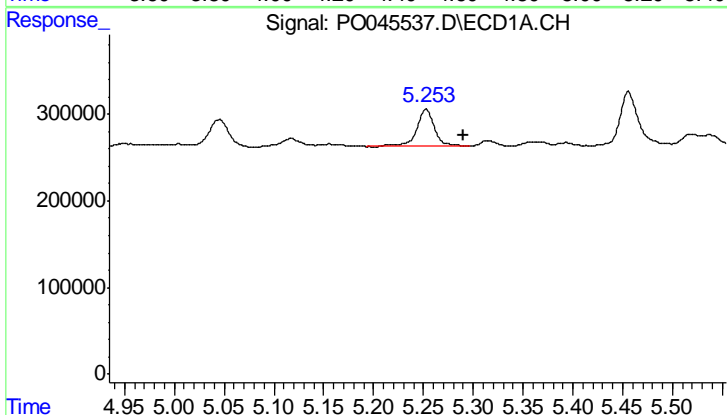
R.T.: 5.253 min
 Delta R.T.: 0.057 min
 Response: 539815
 Conc: 157.74 ng/ml

Instrument :
 ECD_O
 ClientSampled :



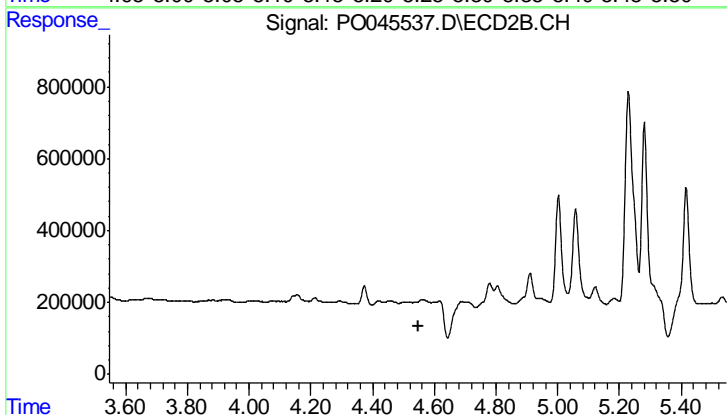
#14 AR-1232-4

R.T.: 0.000 min
 Exp R.T. : 4.468 min
 Response: 0
 Conc: N.D.



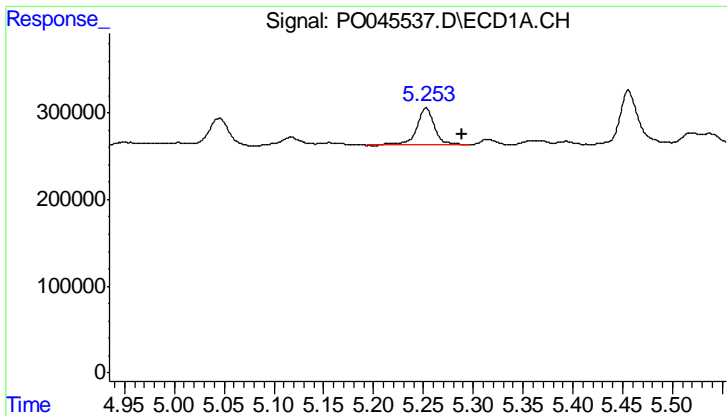
#15 AR-1232-5

R.T.: 5.253 min
 Delta R.T.: -0.037 min
 Response: 539815
 Conc: 200.88 ng/ml



#15 AR-1232-5

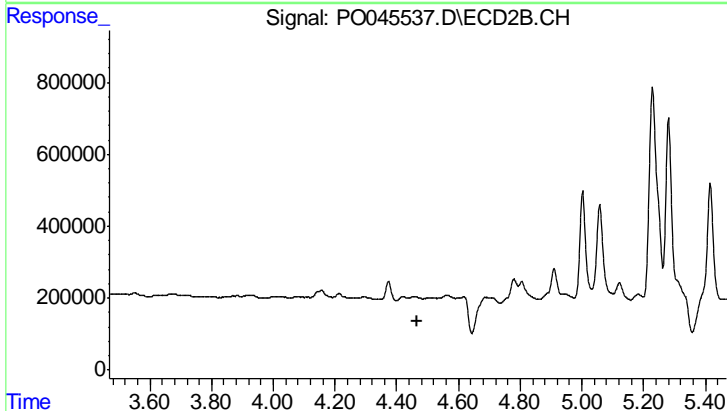
R.T.: 0.000 min
 Exp R.T. : 4.547 min
 Response: 0
 Conc: N.D.



#18 AR-1242-3

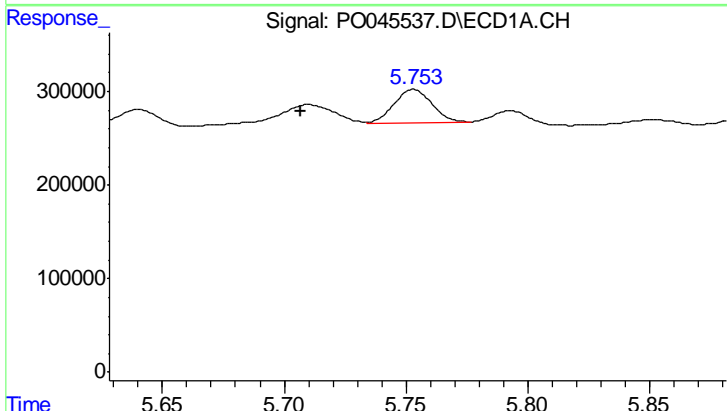
R.T.: 5.253 min
 Delta R.T.: -0.037 min
 Response: 539815
 Conc: 121.36 ng/ml

Instrument :
 ECD_O
 ClientSampled :



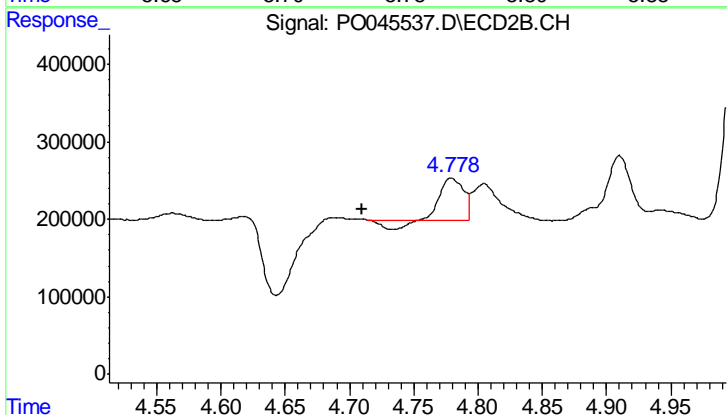
#18 AR-1242-3

R.T.: 0.000 min
 Exp R.T.: 4.468 min
 Response: 0
 Conc: N.D.



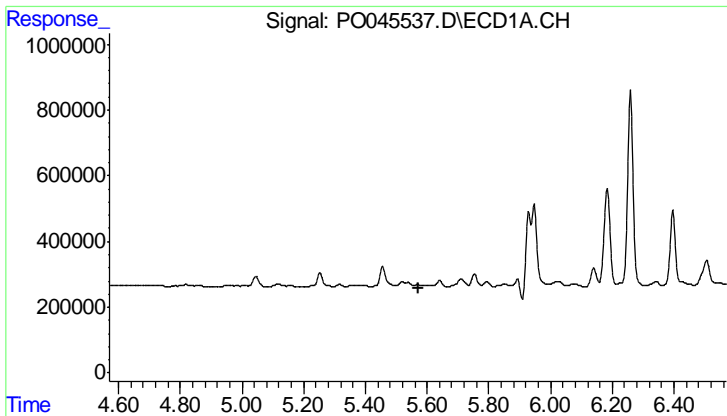
#20 AR-1242-5

R.T.: 5.753 min
 Delta R.T.: 0.046 min
 Response: 386757
 Conc: 79.84 ng/ml



#20 AR-1242-5

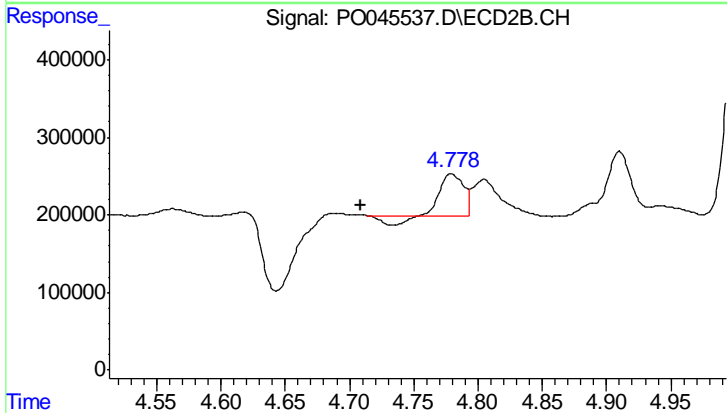
R.T.: 4.779 min
 Delta R.T.: 0.069 min
 Response: 586484
 Conc: 89.88 ng/ml



#21 AR-1248-1

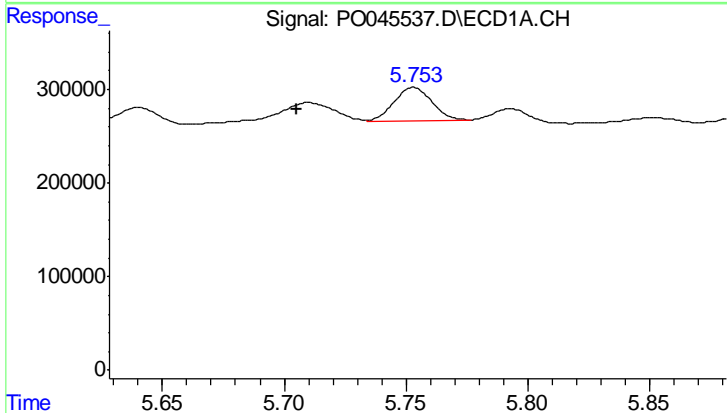
R.T.: 0.000 min
 Exp R.T.: 5.570 min
 Response: 0
 Conc: N.D.

Instrument :
 ECD_O
 ClientSampled :



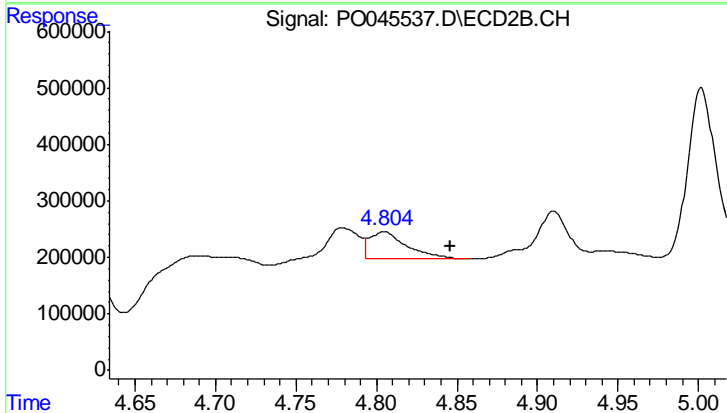
#21 AR-1248-1

R.T.: 4.779 min
 Delta R.T.: 0.070 min
 Response: 586484
 Conc: 55.26 ng/ml



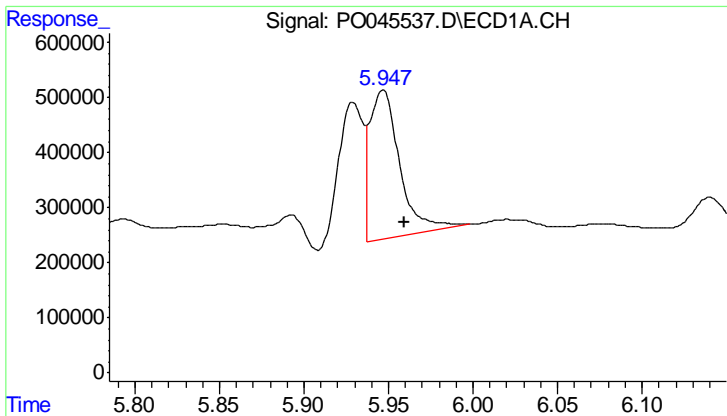
#22 AR-1248-2

R.T.: 5.753 min
 Delta R.T.: 0.048 min
 Response: 386757
 Conc: 62.12 ng/ml



#22 AR-1248-2

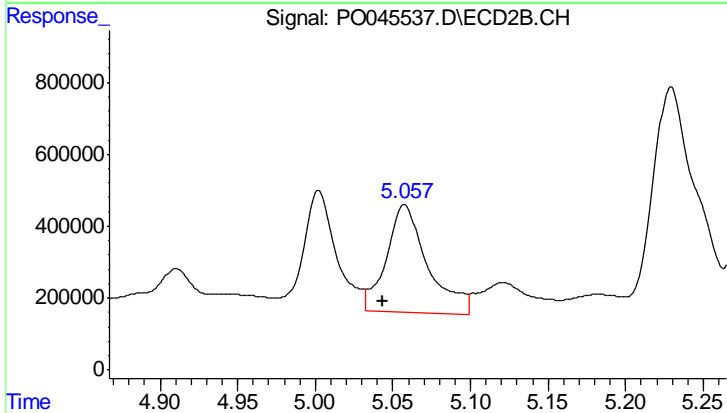
R.T.: 4.805 min
 Delta R.T.: -0.041 min
 Response: 754978
 Conc: 73.37 ng/ml



#23 AR-1248-3

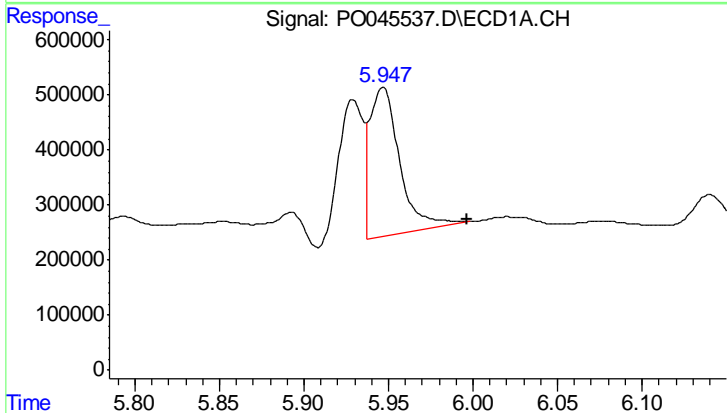
R.T.: 5.947 min
 Delta R.T.: -0.013 min
 Response: 3374863
 Conc: 389.25 ng/ml

Instrument :
 ECD_O
 ClientSampled :



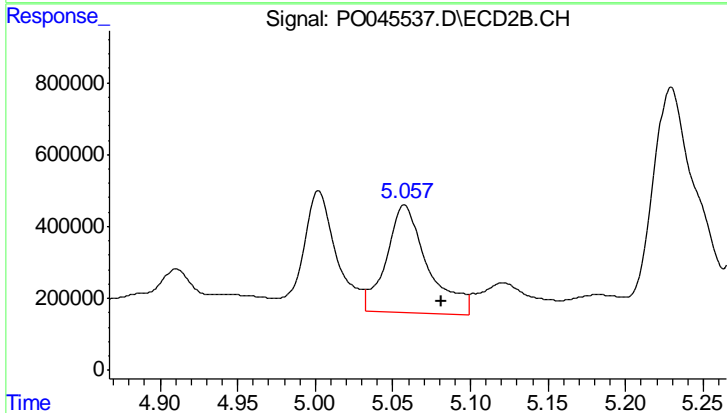
#23 AR-1248-3

R.T.: 5.058 min
 Delta R.T.: 0.014 min
 Response: 5437925
 Conc: 338.17 ng/ml



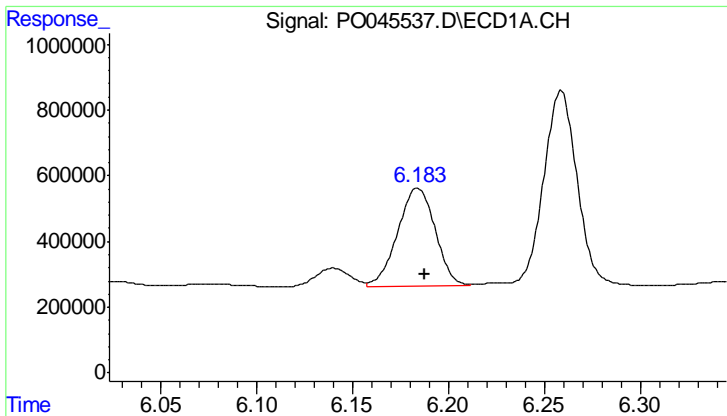
#24 AR-1248-4

R.T.: 5.947 min
 Delta R.T.: -0.049 min
 Response: 3374863
 Conc: 381.23 ng/ml



#24 AR-1248-4

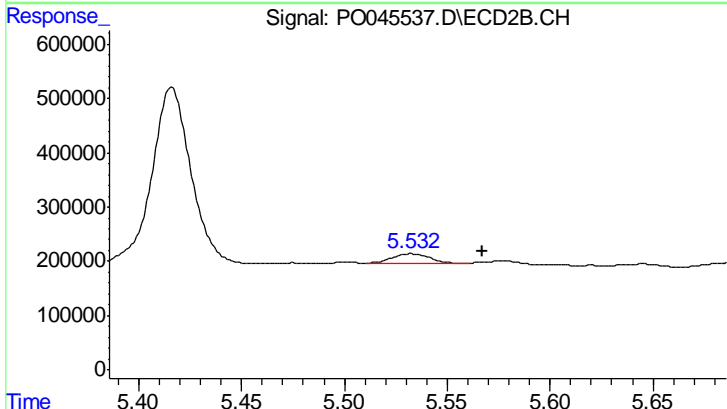
R.T.: 5.058 min
 Delta R.T.: -0.024 min
 Response: 5437925
 Conc: 405.86 ng/ml



#25 AR-1248-5

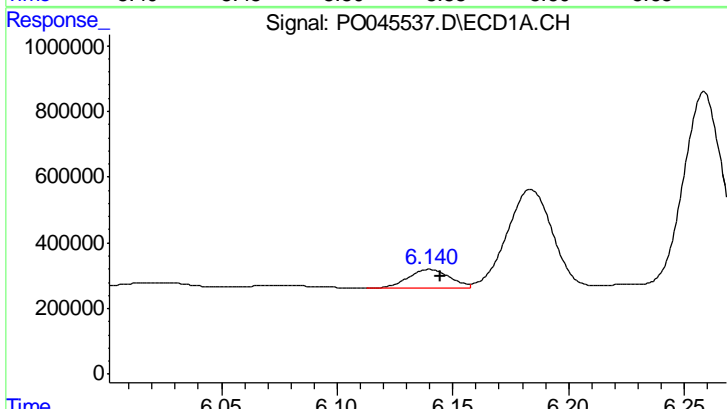
R.T.: 6.184 min
 Delta R.T.: -0.004 min
 Response: 4061570
 Conc: 727.32 ng/ml

Instrument :
 ECD_O
 ClientSampled :



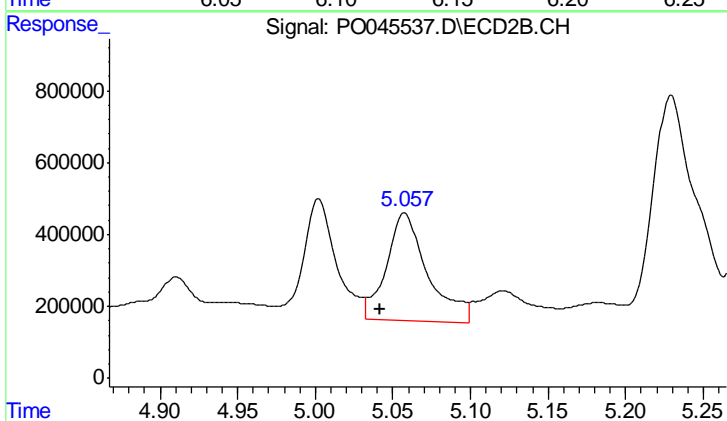
#25 AR-1248-5

R.T.: 5.533 min
 Delta R.T.: -0.035 min
 Response: 228418
 Conc: 31.75 ng/ml



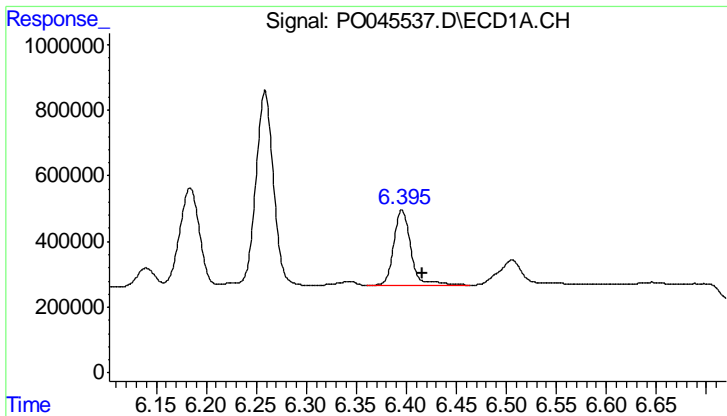
#26 AR-1254-1

R.T.: 6.140 min
 Delta R.T.: -0.005 min
 Response: 689775
 Conc: 49.88 ng/ml



#26 AR-1254-1

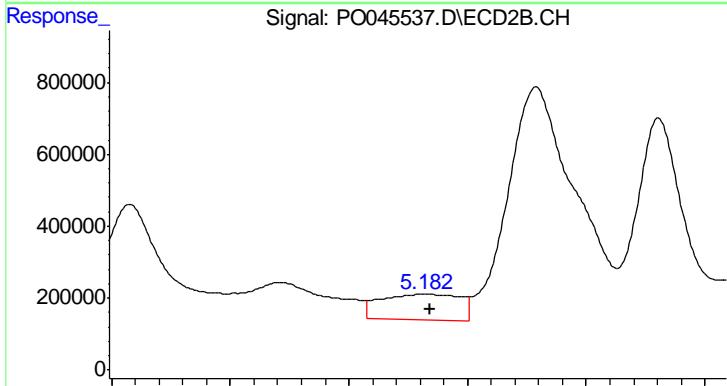
R.T.: 5.058 min
 Delta R.T.: 0.016 min
 Response: 5437925
 Conc: 293.45 ng/ml



#27 AR-1254-2

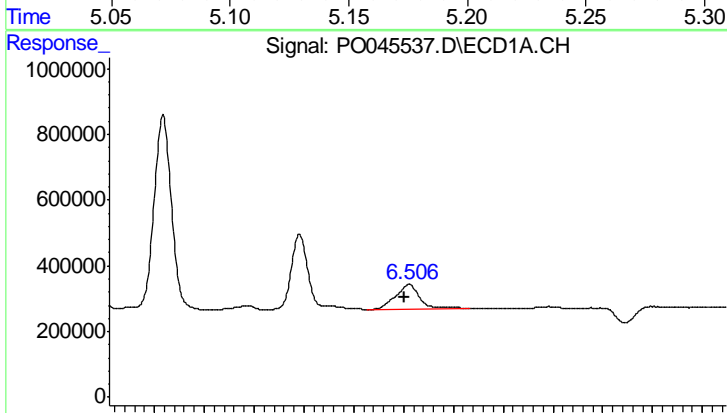
R.T.: 6.396 min
 Delta R.T.: -0.021 min
 Response: 2752325
 Conc: 286.41 ng/ml

Instrument :
 ECD_O
 ClientSampled :



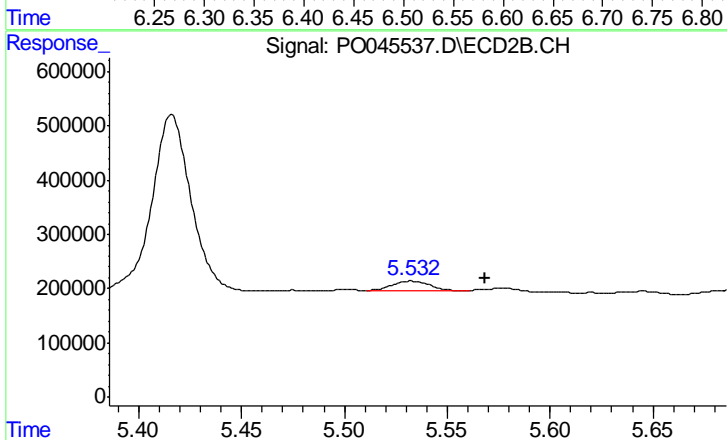
#27 AR-1254-2

R.T.: 5.181 min
 Delta R.T.: -0.003 min
 Response: 1698664
 Conc: 105.36 ng/ml



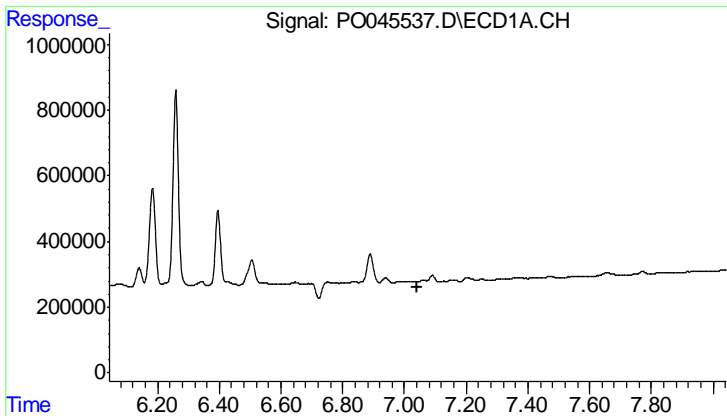
#28 AR-1254-3

R.T.: 6.506 min
 Delta R.T.: 0.004 min
 Response: 1271416
 Conc: 80.69 ng/ml



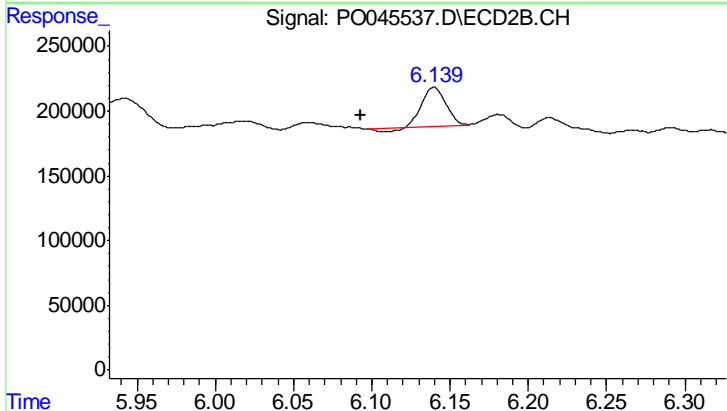
#28 AR-1254-3

R.T.: 5.533 min
 Delta R.T.: -0.036 min
 Response: 228418
 Conc: 8.86 ng/ml

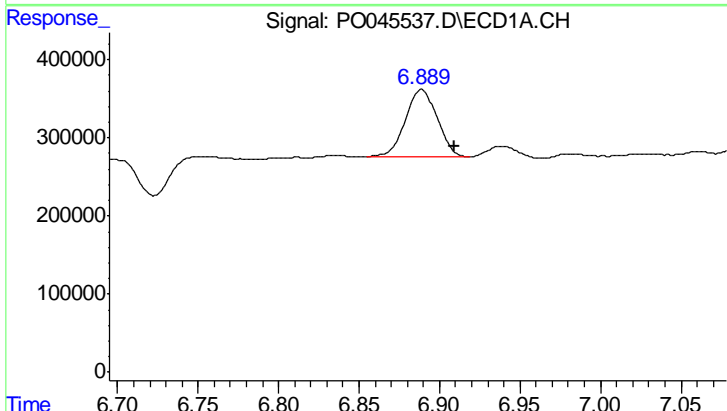


#30 AR-1254-5
 R.T.: 0.000 min
 Exp R.T.: 7.043 min
 Response: 0
 Conc: N.D.

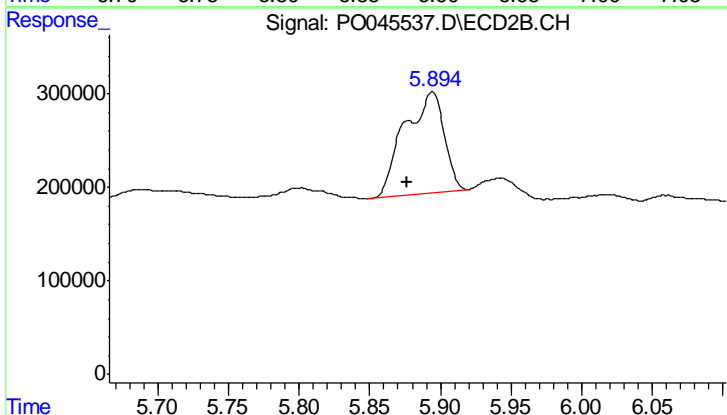
Instrument :
 ECD_O
 ClientSampled :



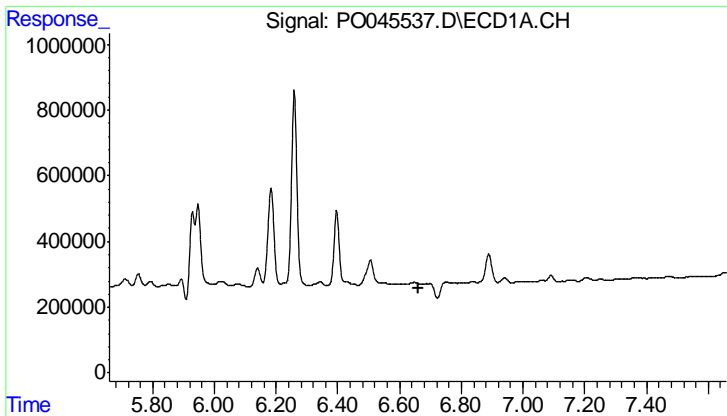
#30 AR-1254-5
 R.T.: 6.140 min
 Delta R.T.: 0.047 min
 Response: 304515
 Conc: 25.42 ng/ml



#32 AR-1260-2
 R.T.: 6.889 min
 Delta R.T.: -0.020 min
 Response: 1205690
 Conc: 79.23 ng/ml



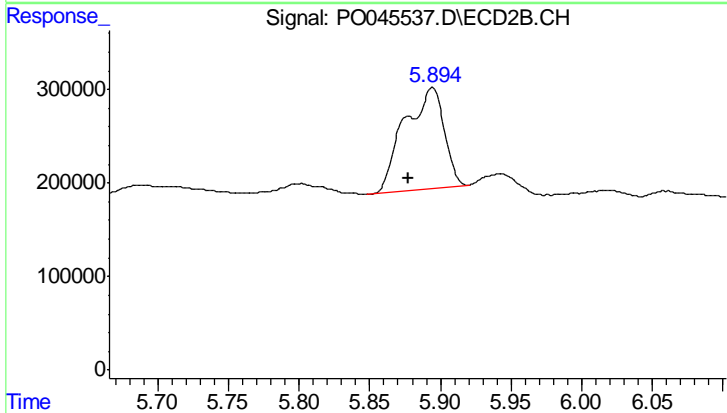
#32 AR-1260-2
 R.T.: 5.894 min
 Delta R.T.: 0.018 min
 Response: 2105876
 Conc: 99.67 ng/ml



#36 AR-1262-1

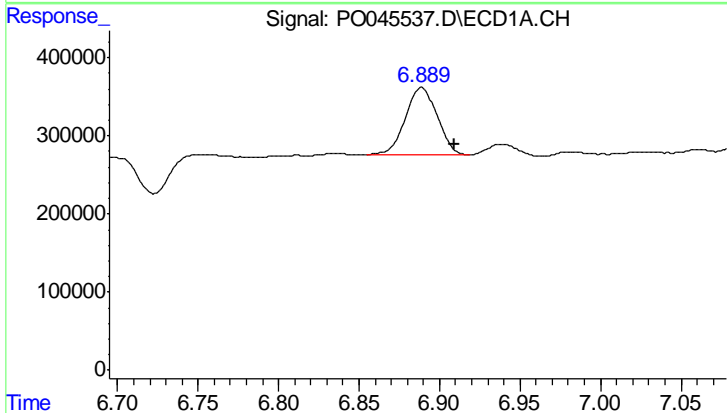
R.T.: 0.000 min
 Exp R.T.: 6.660 min
 Response: 0
 Conc: N.D.

Instrument :
 ECD_O
 ClientSampled :



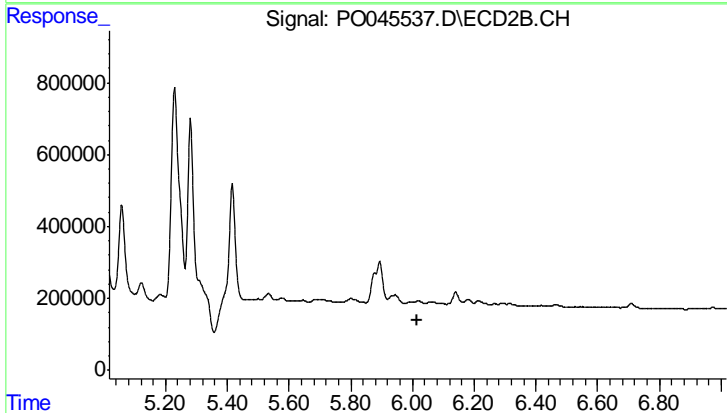
#36 AR-1262-1

R.T.: 5.894 min
 Delta R.T.: 0.017 min
 Response: 2105876
 Conc: 111.25 ng/ml



#37 AR-1262-2

R.T.: 6.889 min
 Delta R.T.: -0.020 min
 Response: 1205690
 Conc: 87.65 ng/ml



#37 AR-1262-2

R.T.: 0.000 min
 Exp R.T.: 6.018 min
 Response: 0
 Conc: N.D.