

Data Path : Z:\PESTPCBSRV\HPCHEM1\ECD_O\Data\PO060718\
 Data File : PO045573.D
 Signal(s) : Signal #1: ECD1A.CH Signal #2: ECD2B.CH
 Acq On : 06 Jun 2018 10:05
 Operator : SM/UA
 Sample : J3243-03RE
 Misc :
 ALS Vial : 7 Sample Multiplier: 1

Instrument :
 ECD_O
 ClientSampleId :
 NB-08-060118-BRE

Integration File signal 1: autoint1.e
 Integration File signal 2: autoint2.e
 Quant Time: Jun 06 11:09:32 2018
 Quant Method : P:\HPCHEM1\ECD_O\methods\PO053018.M
 Quant Title : GC EXTRACTABLES
 QLast Update : Thu May 31 04:53:22 2018
 Response via : Initial Calibration
 Integrator: ChemStation 6890 Scale Mode: Small noise peaks clipped

Volume Inj. : 2 µl
 Signal #1 Phase : ZB-MR1 Signal #2 Phase: ZB-MR2
 Signal #1 Info : 30Mx0.32mmx 0.50µ Signal #2 Info : 30M x 0.32mm x 0.25µm

Compound	RT#1	RT#2	Resp#1	Resp#2	ng/ml	ng/ml

System Monitoring Compounds						
1) SA Tetrachlo...	3.994	3.271	4403052	5313583	21.080	19.162
2) SA Decachlor...	9.268	7.988	2528584	2608114	11.010	9.254
Target Compounds						
3) L1 AR-1016-1	4.872	4.065	903666	1003325	171.115	145.182
4) L1 AR-1016-2	0.000	4.510	0	1377543	N.D.	233.615 #
5) L1 AR-1016-3	0.000	4.546	0	572132	N.D.	81.666 #
10) L2 AR-1221-3	0.000	3.682	0	2249878	N.D.	182.013 #
11) L3 AR-1232-1	0.000	3.682	0	2249878	N.D.	387.459 #
12) L3 AR-1232-2	5.046	4.286	362830	498060	110.194	39.430 #
13) L3 AR-1232-3	0.000	4.337	0	445590	N.D.	85.474 #
14) L3 AR-1232-4	0.000	4.510	0	1377543	N.D.	361.391 #
15) L3 AR-1232-5	0.000	4.546	0	572132	N.D.	169.149 #
16) L4 AR-1242-1	0.000	4.065	0	1003325	N.D.	179.257 #
17) L4 AR-1242-2	0.000	4.286	0	498060	N.D.	24.341 #
18) L4 AR-1242-3	0.000	4.510	0	1377543	N.D.	224.133 #
19) L4 AR-1242-4	5.541	4.546	324305	572132	74.723	95.639 #
21) L5 AR-1248-1	5.541	0.000	324305	0	45.726	N.D. #
27) L6 AR-1254-2	0.000	5.227	0	415674	N.D.	25.782 #
32) L7 AR-1260-2	0.000	5.872	0	259198	N.D.	12.268 #
36) L8 AR-1262-1	0.000	5.872	0	259198	N.D.	13.693 #

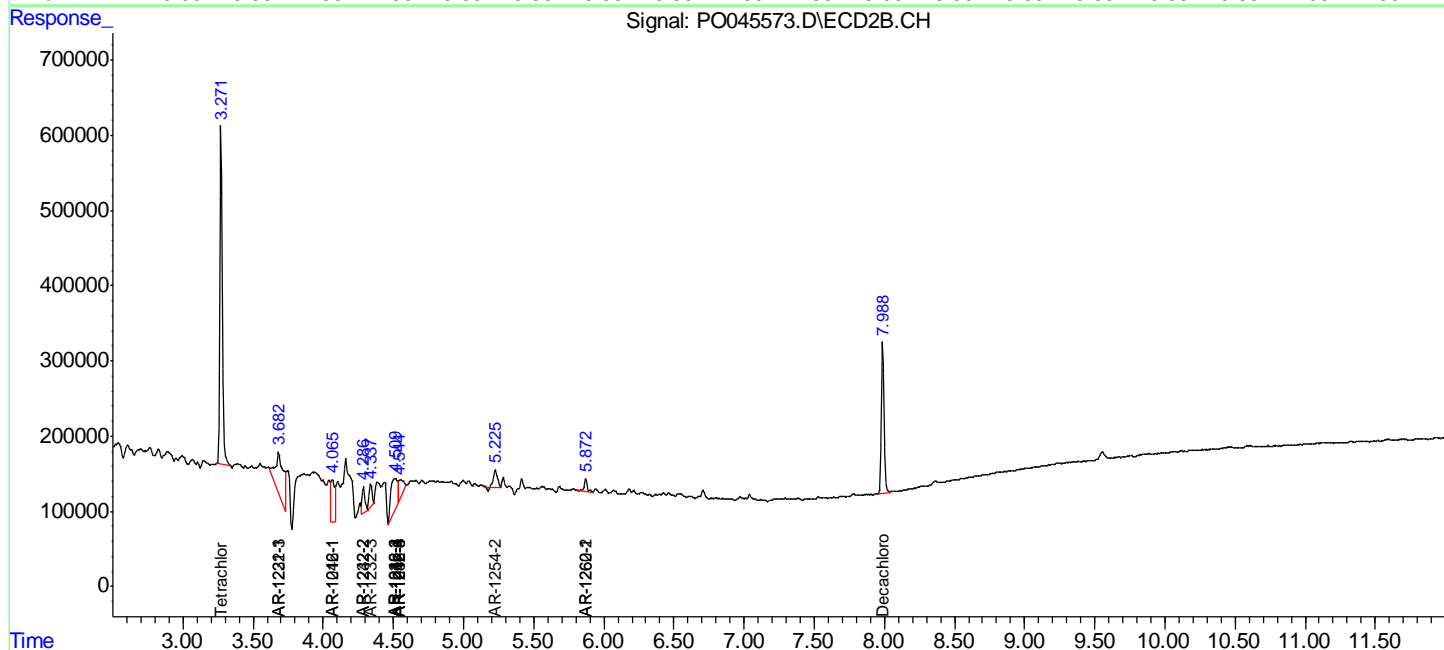
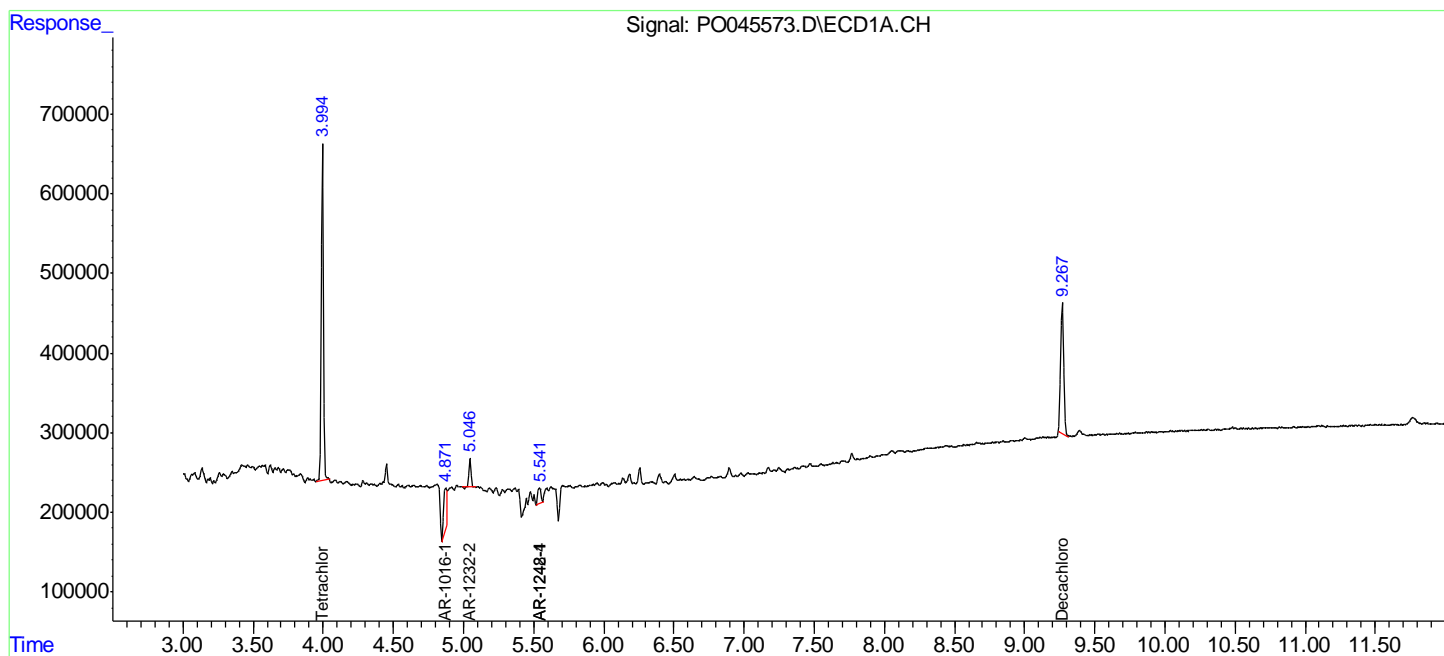
(f)=RT Delta > 1/2 Window (#)=Amounts differ by > 25% (m)=manual int.

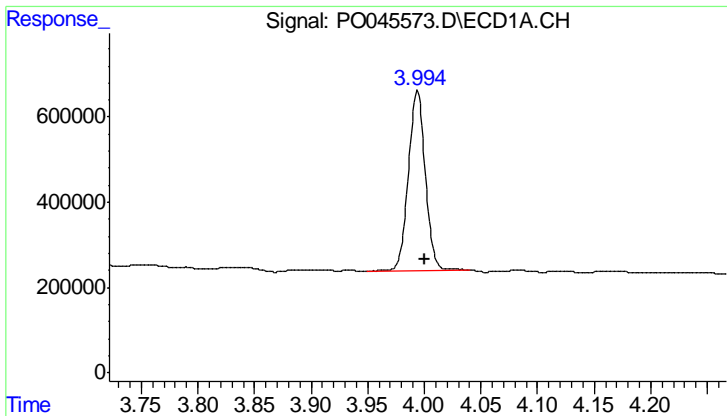
Data Path : Z:\PESTPCBSRV\HPCHEM1\ECD_O\Data\PO060718\
 Data File : PO045573.D
 Signal(s) : Signal #1: ECD1A.CH Signal #2: ECD2B.CH
 Acq On : 06 Jun 2018 10:05
 Operator : SM/UA
 Sample : J3243-03RE
 Misc :
 ALS Vial : 7 Sample Multiplier: 1

Instrument :
 ECD_O
 ClientSampleId :
 NB-08-060118-BRE

Integration File signal 1: autoint1.e
 Integration File signal 2: autoint2.e
 Quant Time: Jun 06 11:09:32 2018
 Quant Method : P:\HPCHEM1\ECD_O\methods\PO053018.M
 Quant Title : GC EXTRACTABLES
 QLast Update : Thu May 31 04:53:22 2018
 Response via : Initial Calibration
 Integrator: ChemStation 6890 Scale Mode: Small noise peaks clipped

Volume Inj. : 2 µl
 Signal #1 Phase : ZB-MR1 Signal #2 Phase: ZB-MR2
 Signal #1 Info : 30Mx0.32mmx 0.50µ Signal #2 Info : 30M x 0.32mm x 0.25µm

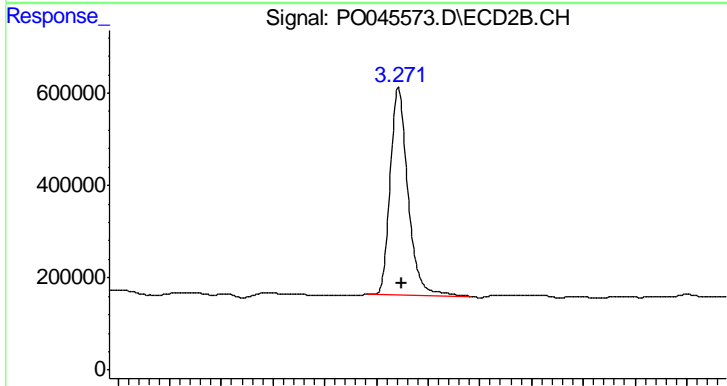




#1 Tetrachloro-m-xylene

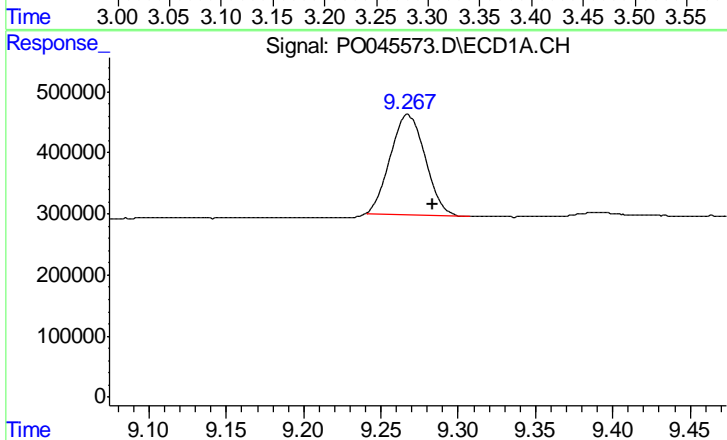
R.T.: 3.994 min
 Delta R.T.: -0.006 min
 Response: 4403052
 Conc: 21.08 ng/ml

Instrument :
 ECD_O
 ClientSampleId :
 NB-08-060118-BRE



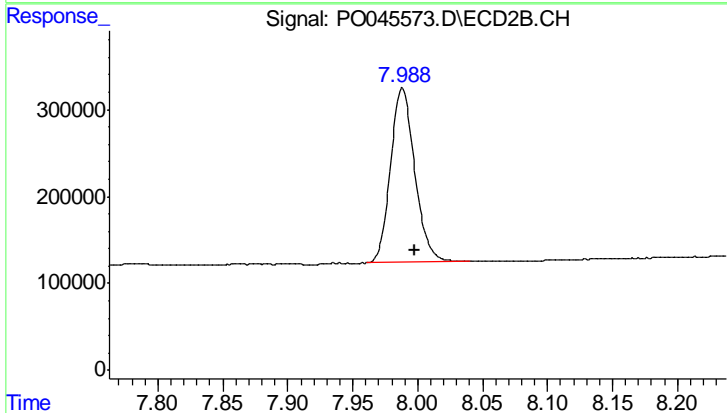
#1 Tetrachloro-m-xylene

R.T.: 3.271 min
 Delta R.T.: -0.004 min
 Response: 5313583
 Conc: 19.16 ng/ml



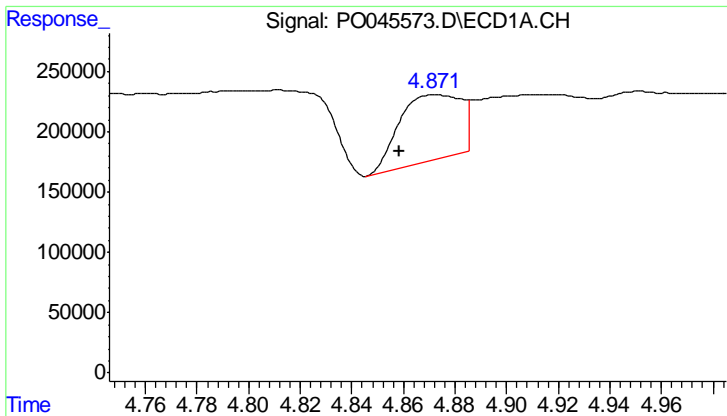
#2 Decachlorobiphenyl

R.T.: 9.268 min
 Delta R.T.: -0.016 min
 Response: 2528584
 Conc: 11.01 ng/ml



#2 Decachlorobiphenyl

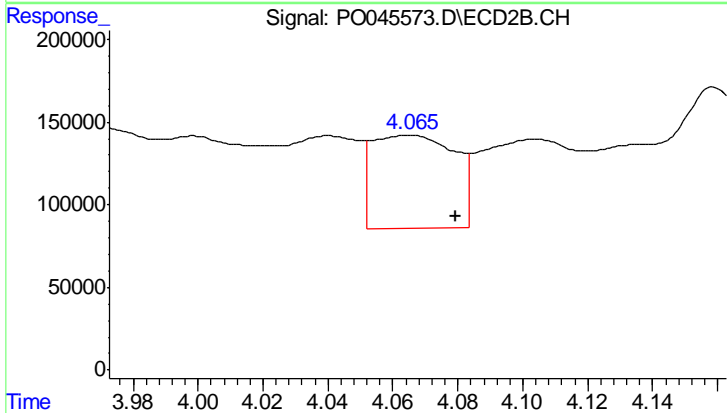
R.T.: 7.988 min
 Delta R.T.: -0.009 min
 Response: 2608114
 Conc: 9.25 ng/ml



#3 AR-1016-1

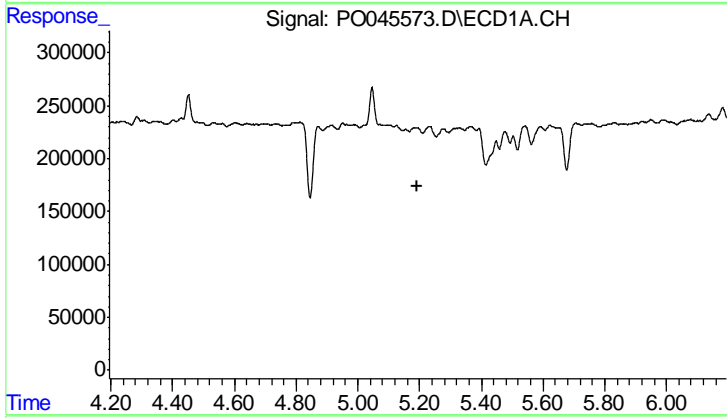
R.T.: 4.872 min
 Delta R.T.: 0.014 min
 Response: 903666
 Conc: 171.12 ng/ml

Instrument :
 ECD_O
 ClientSampleId :
 NB-08-060118-BRE



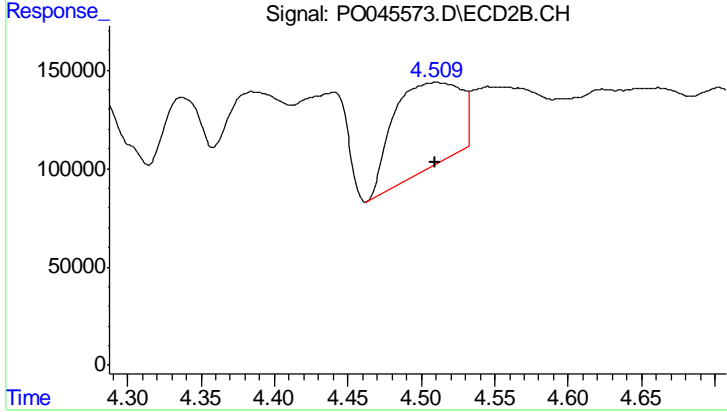
#3 AR-1016-1

R.T.: 4.065 min
 Delta R.T.: -0.014 min
 Response: 1003325
 Conc: 145.18 ng/ml



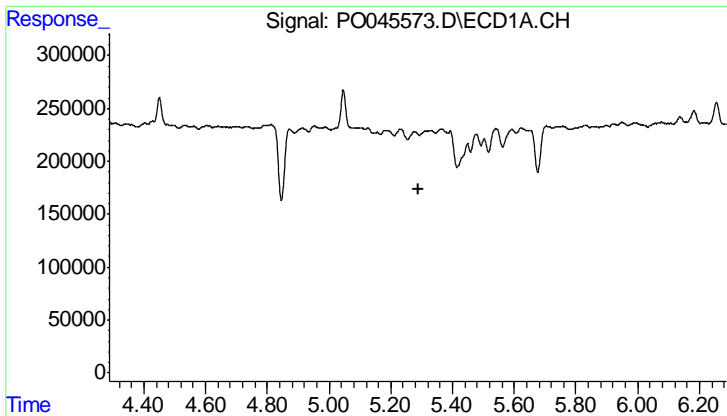
#4 AR-1016-2

R.T.: 0.000 min
 Exp R.T. : 5.194 min
 Response: 0
 Conc: N.D.



#4 AR-1016-2

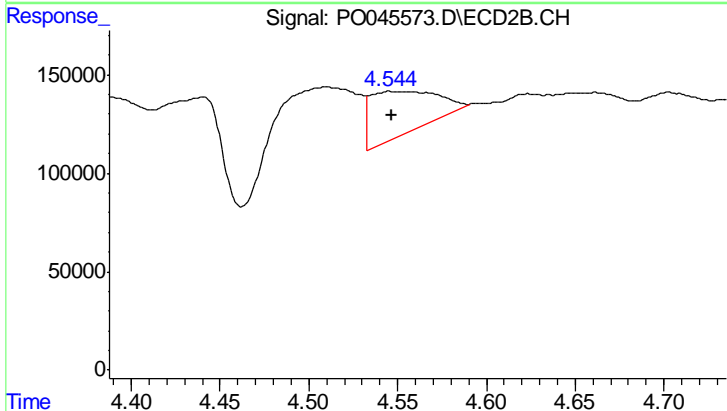
R.T.: 4.510 min
 Delta R.T.: 0.000 min
 Response: 1377543
 Conc: 233.62 ng/ml



#5 AR-1016-3

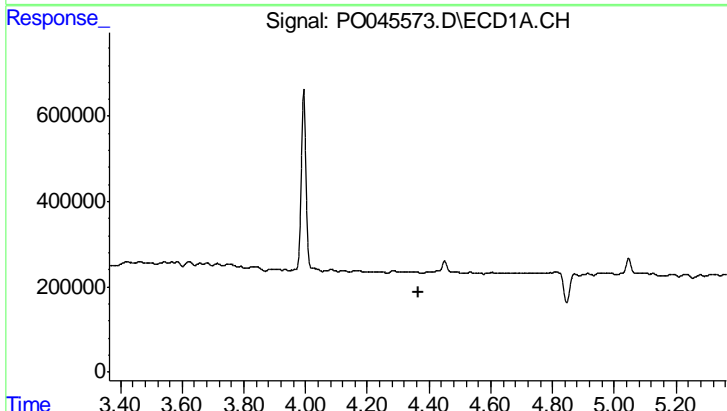
R.T.: 0.000 min
 Exp R.T.: 5.288 min
 Response: 0
 Conc: N.D.

Instrument :
 ECD_O
 ClientSampleId :
 NB-08-060118-BRE



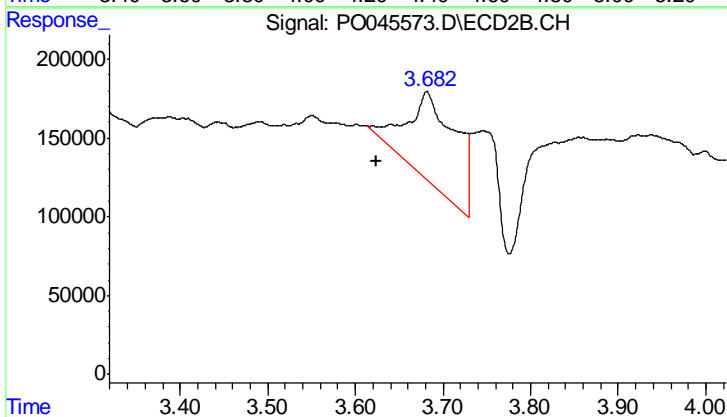
#5 AR-1016-3

R.T.: 4.546 min
 Delta R.T.: 0.000 min
 Response: 572132
 Conc: 81.67 ng/ml



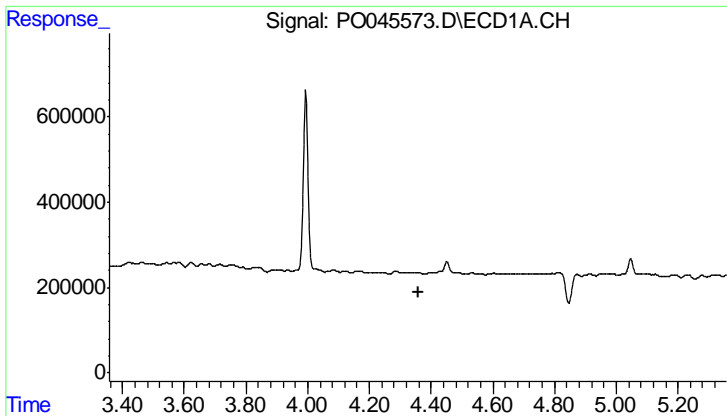
#10 AR-1221-3

R.T.: 0.000 min
 Exp R.T.: 4.364 min
 Response: 0
 Conc: N.D.



#10 AR-1221-3

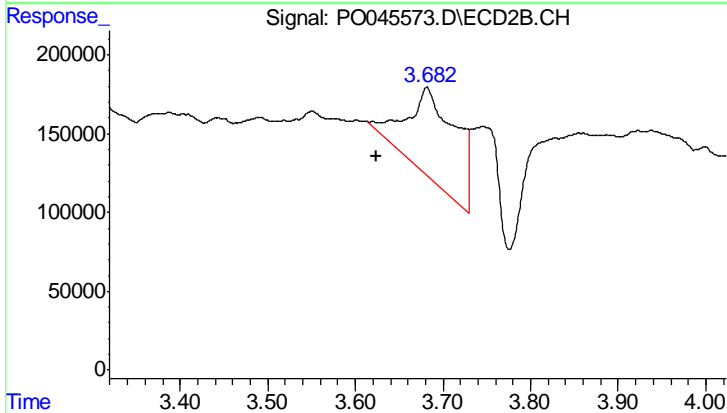
R.T.: 3.682 min
 Delta R.T.: 0.058 min
 Response: 2249878
 Conc: 182.01 ng/ml



#11 AR-1232-1

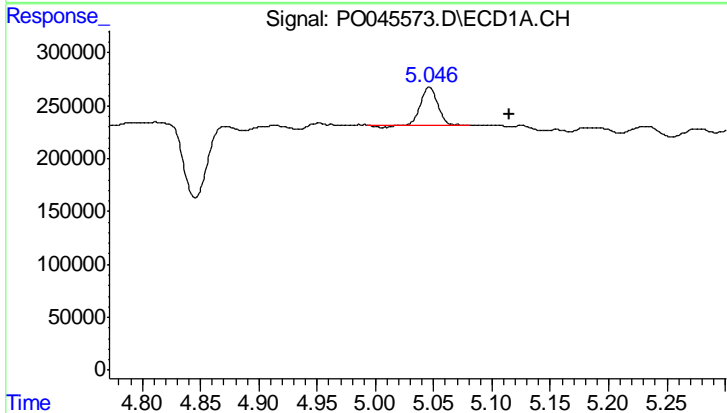
R.T.: 0.000 min
 Exp R.T.: 4.357 min
 Response: 0
 Conc: N.D.

Instrument :
 ECD_O
 ClientSampled :
 NB-08-060118-BRE



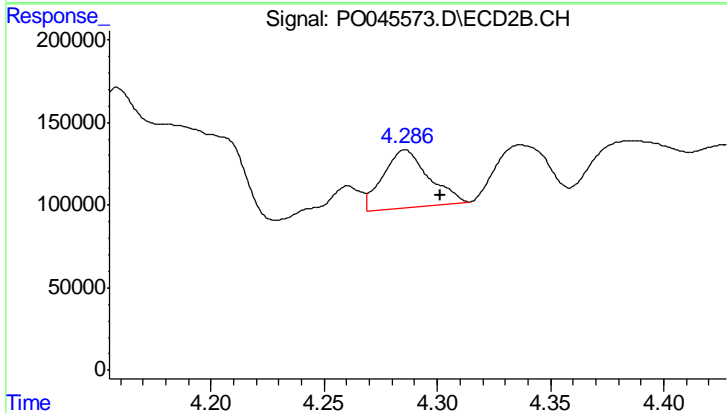
#11 AR-1232-1

R.T.: 3.682 min
 Delta R.T.: 0.057 min
 Response: 2249878
 Conc: 387.46 ng/ml



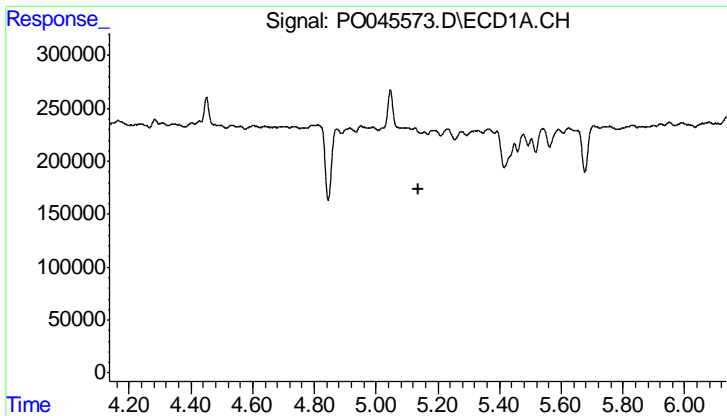
#12 AR-1232-2

R.T.: 5.046 min
 Delta R.T.: -0.069 min
 Response: 362830
 Conc: 110.19 ng/ml



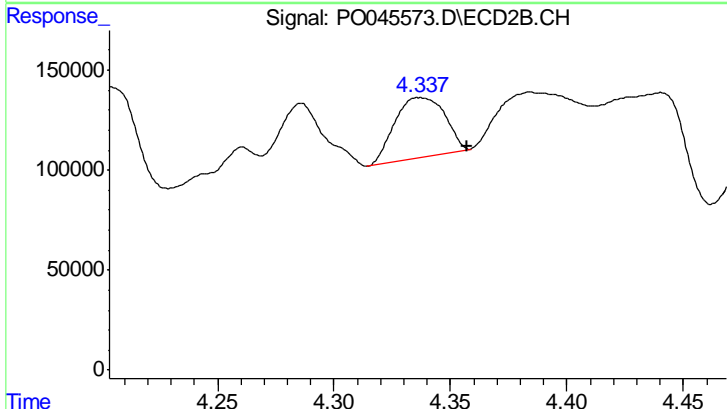
#12 AR-1232-2

R.T.: 4.286 min
 Delta R.T.: -0.015 min
 Response: 498060
 Conc: 39.43 ng/ml

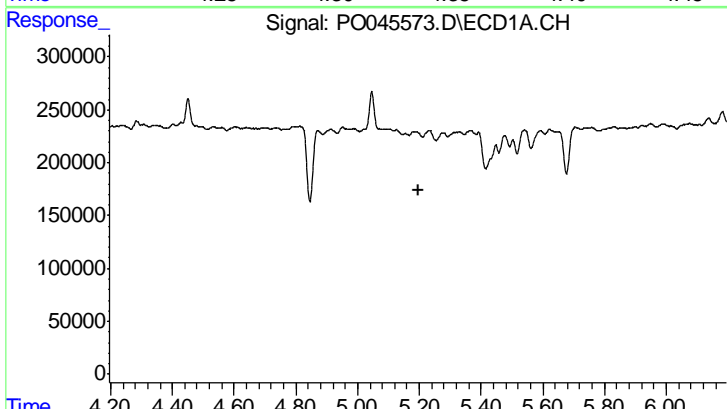


#13 AR-1232-3
 R.T.: 0.000 min
 Exp R.T.: 5.136 min
 Response: 0
 Conc: N.D.

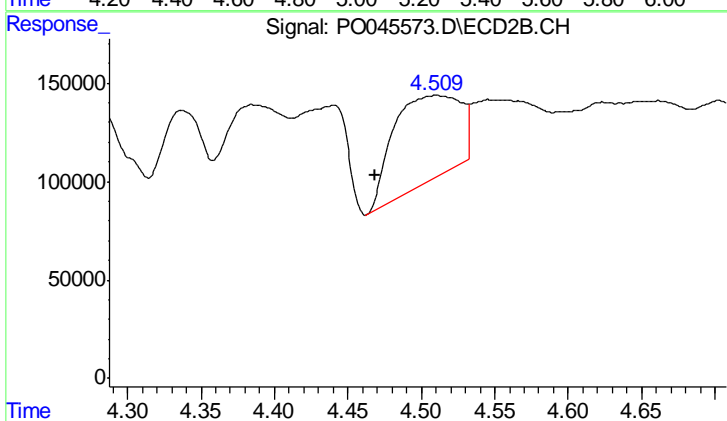
Instrument :
 ECD_O
 ClientSampled :
 NB-08-060118-BRE



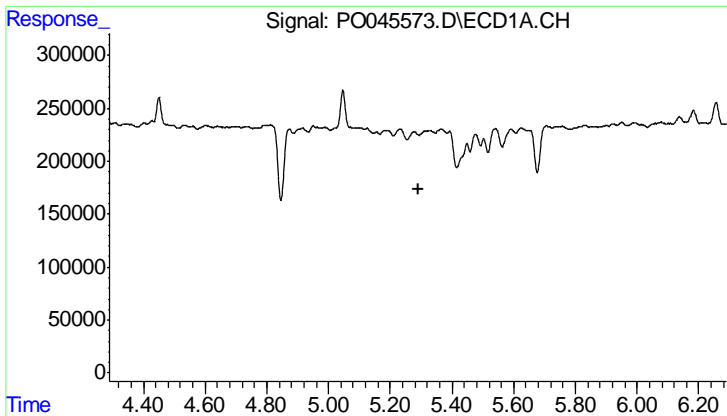
#13 AR-1232-3
 R.T.: 4.337 min
 Delta R.T.: -0.020 min
 Response: 445590
 Conc: 85.47 ng/ml



#14 AR-1232-4
 R.T.: 0.000 min
 Exp R.T.: 5.196 min
 Response: 0
 Conc: N.D.



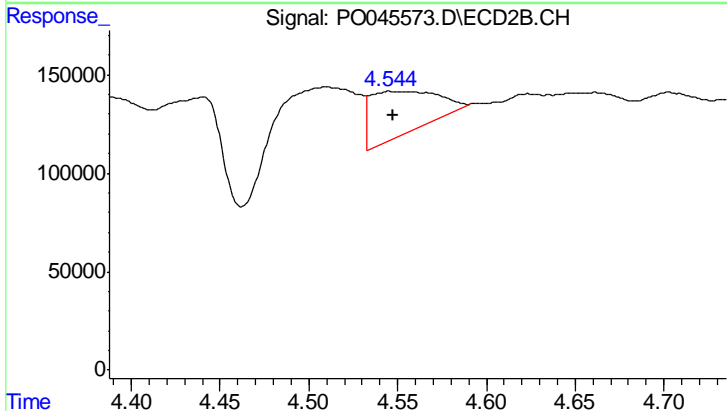
#14 AR-1232-4
 R.T.: 4.510 min
 Delta R.T.: 0.041 min
 Response: 1377543
 Conc: 361.39 ng/ml



#15 AR-1232-5

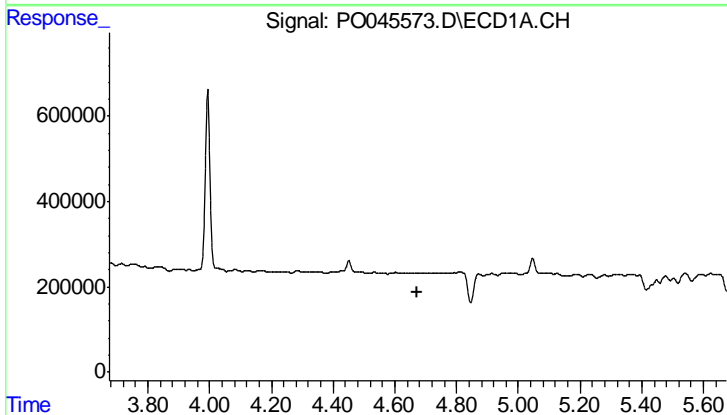
R.T.: 0.000 min
 Exp R.T.: 5.290 min
 Response: 0
 Conc: N.D.

Instrument :
 ECD_O
 ClientSampleId :
 NB-08-060118-BRE



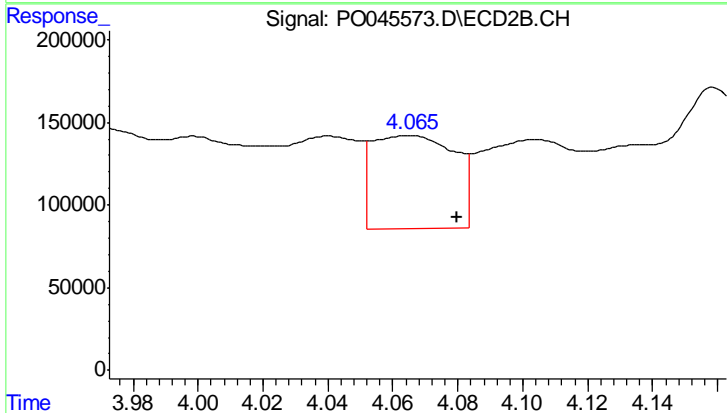
#15 AR-1232-5

R.T.: 4.546 min
 Delta R.T.: -0.001 min
 Response: 572132
 Conc: 169.15 ng/ml



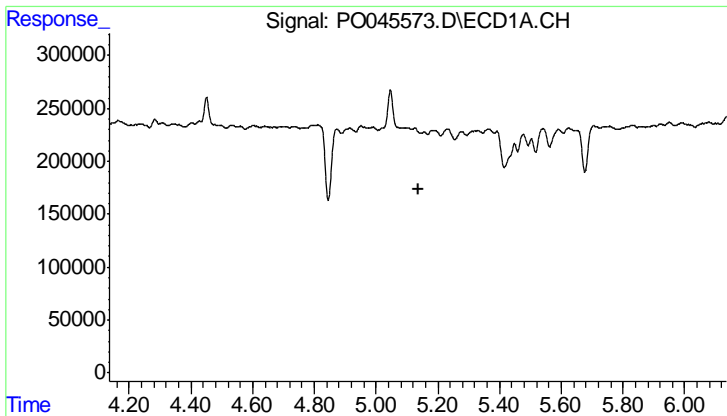
#16 AR-1242-1

R.T.: 0.000 min
 Exp R.T.: 4.675 min
 Response: 0
 Conc: N.D.



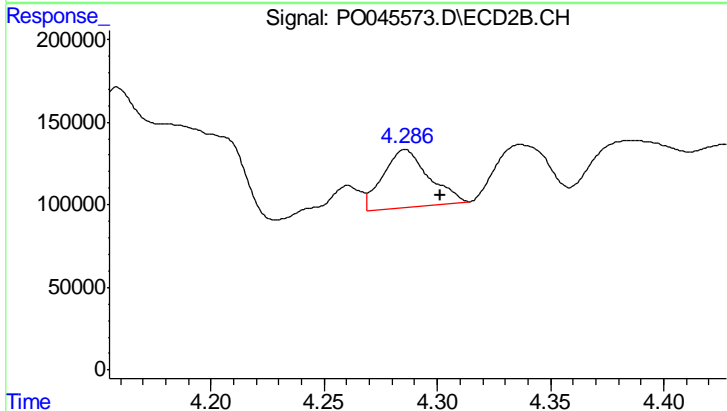
#16 AR-1242-1

R.T.: 4.065 min
 Delta R.T.: -0.015 min
 Response: 1003325
 Conc: 179.26 ng/ml

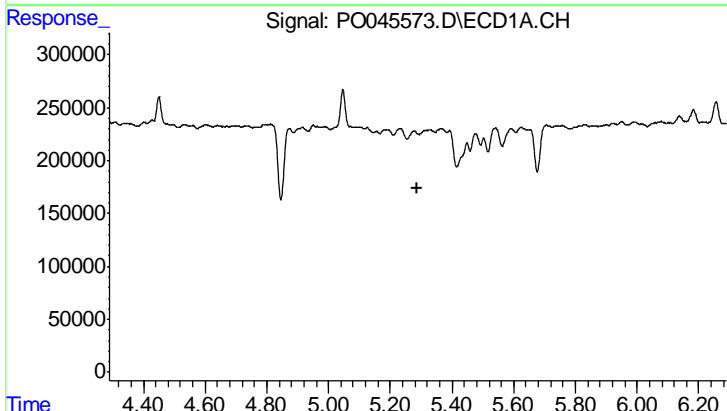


#17 AR-1242-2
 R.T.: 0.000 min
 Exp R.T.: 5.136 min
 Response: 0
 Conc: N.D.

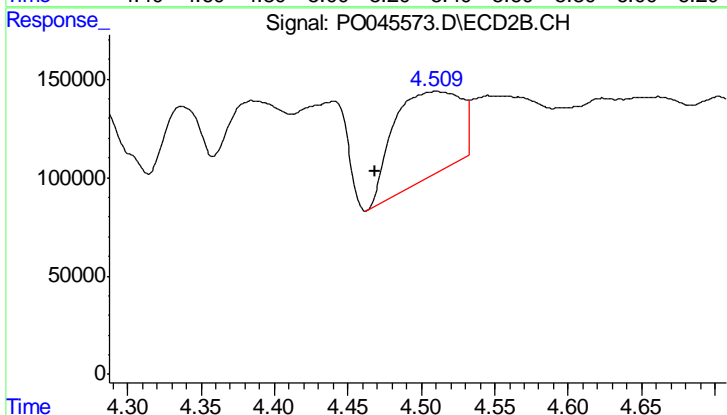
Instrument :
 ECD_O
 ClientSampled :
 NB-08-060118-BRE



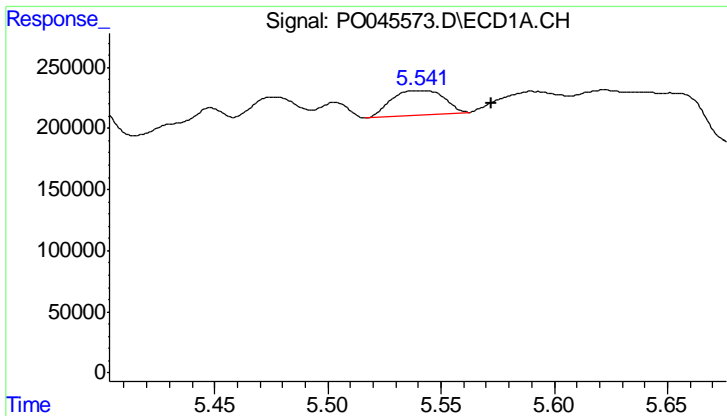
#17 AR-1242-2
 R.T.: 4.286 min
 Delta R.T.: -0.015 min
 Response: 498060
 Conc: 24.34 ng/ml



#18 AR-1242-3
 R.T.: 0.000 min
 Exp R.T.: 5.289 min
 Response: 0
 Conc: N.D.



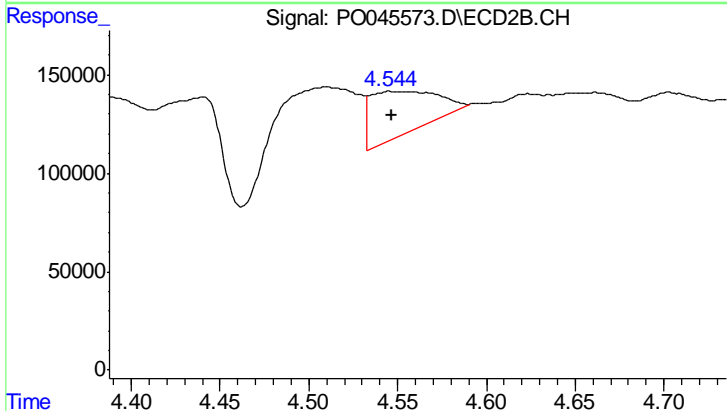
#18 AR-1242-3
 R.T.: 4.510 min
 Delta R.T.: 0.041 min
 Response: 1377543
 Conc: 224.13 ng/ml



#19 AR-1242-4

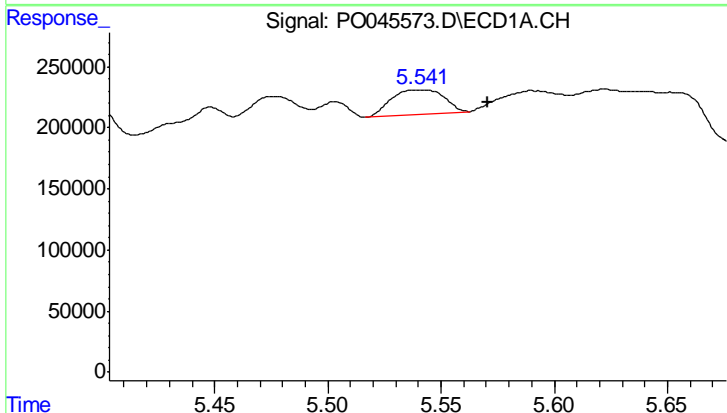
R.T.: 5.541 min
 Delta R.T.: -0.032 min
 Response: 324305
 Conc: 74.72 ng/ml

Instrument :
 ECD_O
 ClientSampleId :
 NB-08-060118-BRE



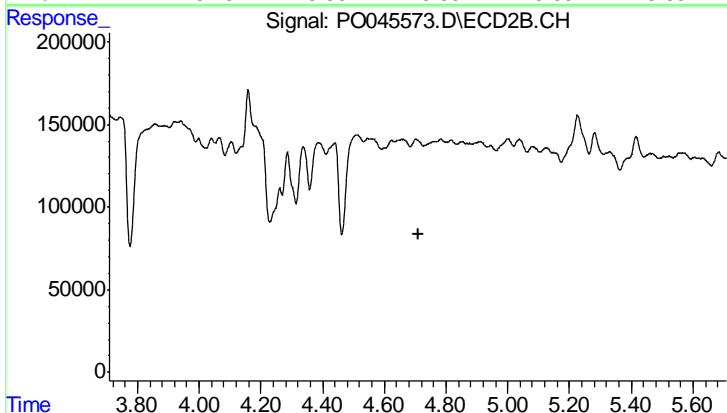
#19 AR-1242-4

R.T.: 4.546 min
 Delta R.T.: 0.000 min
 Response: 572132
 Conc: 95.64 ng/ml



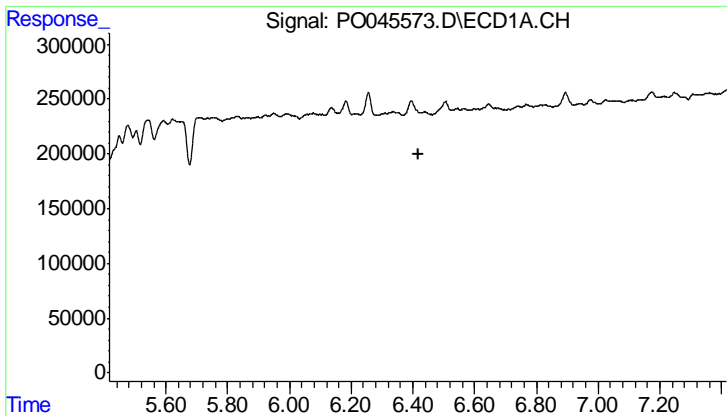
#21 AR-1248-1

R.T.: 5.541 min
 Delta R.T.: -0.030 min
 Response: 324305
 Conc: 45.73 ng/ml



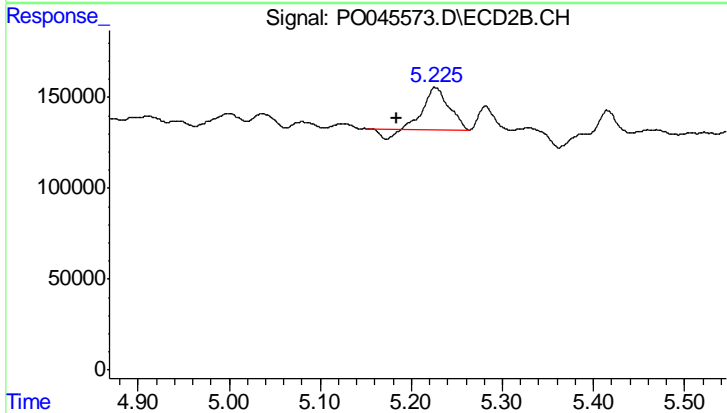
#21 AR-1248-1

R.T.: 0.000 min
 Exp R.T. : 4.709 min
 Response: 0
 Conc: N.D.

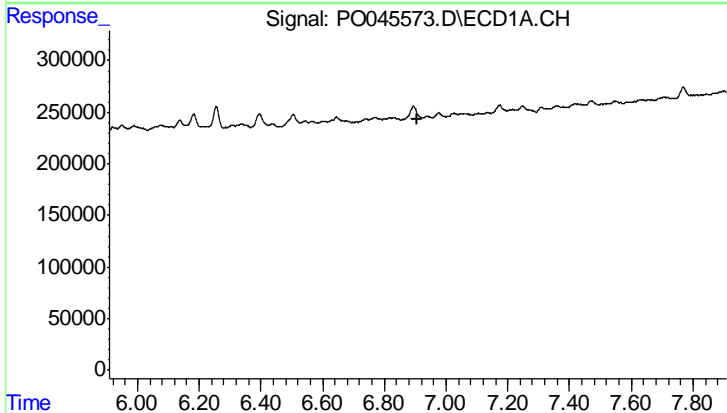


#27 AR-1254-2
 R.T.: 0.000 min
 Exp R.T.: 6.417 min
 Response: 0
 Conc: N.D.

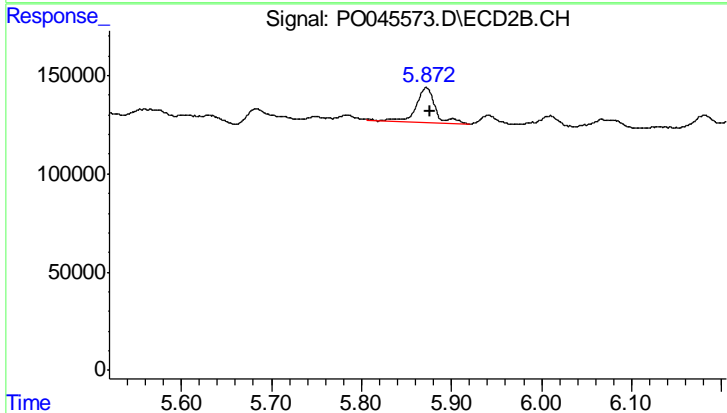
Instrument :
 ECD_O
 ClientSampleId :
 NB-08-060118-BRE



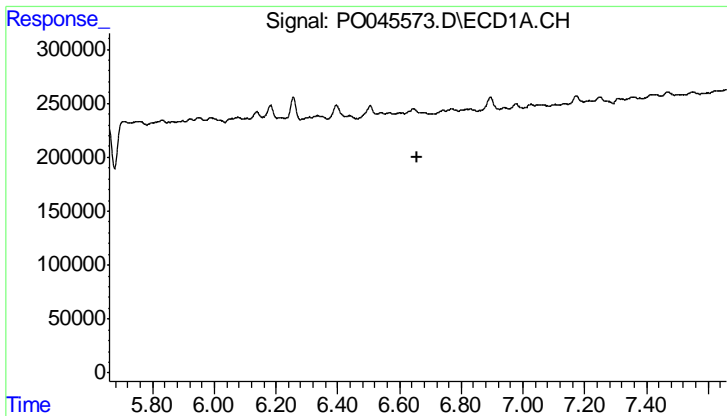
#27 AR-1254-2
 R.T.: 5.227 min
 Delta R.T.: 0.042 min
 Response: 415674
 Conc: 25.78 ng/ml



#32 AR-1260-2
 R.T.: 0.000 min
 Exp R.T.: 6.909 min
 Response: 0
 Conc: N.D.



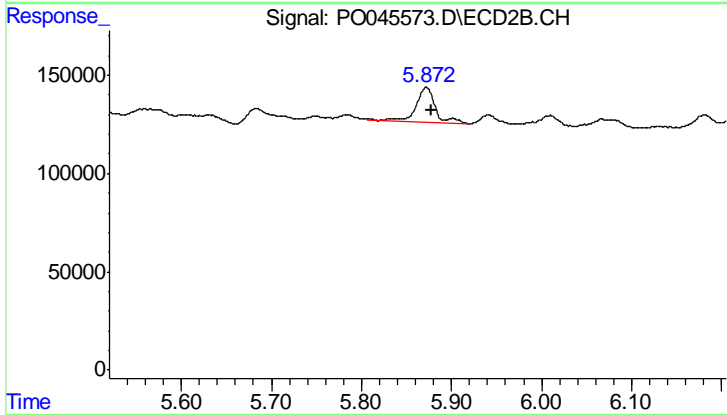
#32 AR-1260-2
 R.T.: 5.872 min
 Delta R.T.: -0.004 min
 Response: 259198
 Conc: 12.27 ng/ml



#36 AR-1262-1

R.T.: 0.000 min
 Exp R.T.: 6.660 min
 Response: 0
 Conc: N.D.

Instrument :
 ECD_O
ClientSampled :
 NB-08-060118-BRE



#36 AR-1262-1

R.T.: 5.872 min
 Delta R.T.: -0.005 min
 Response: 259198
 Conc: 13.69 ng/ml