

Data Path : Z:\pestpcbsrv\HPCHEM1\ECD_O\Data\PO061318\
 Data File : PO045753.D
 Signal(s) : Signal #1: ECD1A.CH Signal #2: ECD2B.CH
 Acq On : 13 Jun 2018 22:09
 Operator : SM/UA
 Sample : PB110158BSD
 Misc :
 ALS Vial : 19 Sample Multiplier: 1

Instrument :
 ECD_O
 ClientSampleId :
 PB110158BSD

Integration File signal 1: autoint1.e
 Integration File signal 2: autoint2.e
 Quant Time: Jun 14 03:15:06 2018
 Quant Method : Z:\pestpcbsrv\HPCHEM1\ECD_O\methods\PO061218.M
 Quant Title : GC EXTRACTABLES
 QLast Update : Wed Jun 13 03:54:48 2018
 Response via : Initial Calibration
 Integrator: ChemStation 6890 Scale Mode: Small noise peaks clipped

Volume Inj. : 2 µl
 Signal #1 Phase : ZB-MR1 Signal #2 Phase: ZB-MR2
 Signal #1 Info : 30Mx0.32mmx 0.50µ Signal #2 Info : 30M x 0.32mm x 0.25µm

Compound	RT#1	RT#2	Resp#1	Resp#2	ng/ml	ng/ml

System Monitoring Compounds						
1) SA Tetrachlo...	4.397	3.630	4102684	1998142	21.054	17.579
2) SA Decachlor...	10.061	8.614	3468956	1462051	24.778	20.908
Target Compounds						
3) L1 AR-1016-1	5.288	4.491	887336	231366	175.258	68.665 #
4) L1 AR-1016-2	5.638	4.947	923878	164185	144.606	67.020 #
5) L1 AR-1016-3	5.735	4.990	994927	182843	188.746	57.149 #
6) L1 AR-1016-4	6.168	5.160	804665	1111498	143.363	317.953 #
7) L1 AR-1016-5	6.403	5.511	910440	672848	194.413	209.566
31) L7 AR-1260-1	7.148	6.187	1162959	983870	116.544	154.186 #
32) L7 AR-1260-2	7.403	6.373	980772	900608	85.454	119.898 #
33) L7 AR-1260-3	7.683	6.740	1157428	345741	88.506	63.442 #
34) L7 AR-1260-4	8.297	7.237	1197008	726584	68.944	67.066
35) L7 AR-1260-5	8.612	7.584	812834	491436	74.999	65.085

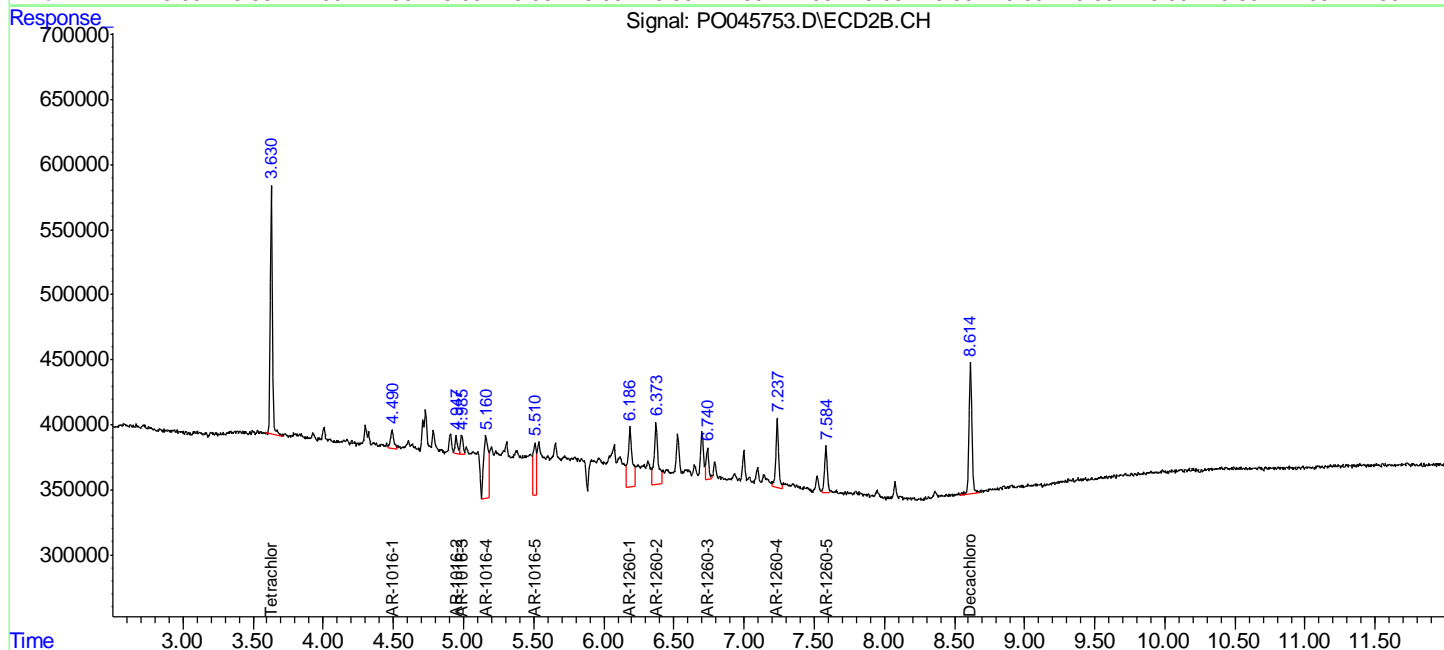
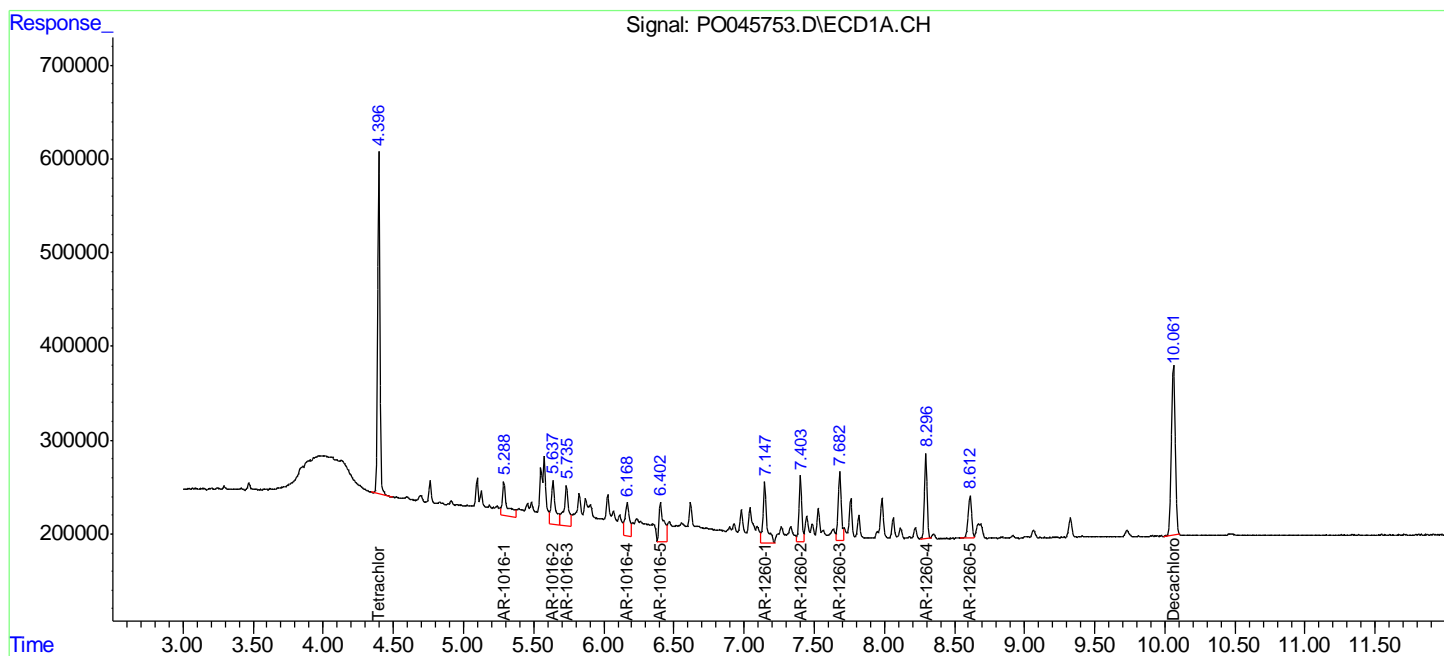
(f)=RT Delta > 1/2 Window (#)=Amounts differ by > 25% (m)=manual int.

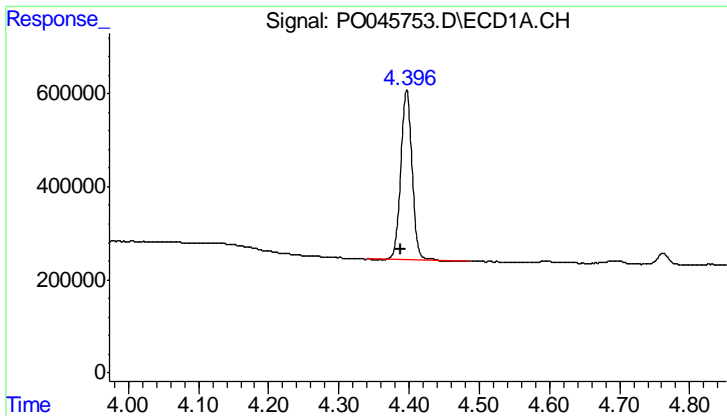
Data Path : Z:\pestpcbsrv\HPCHEM1\ECD_O\Data\PO061318\
 Data File : PO045753.D
 Signal(s) : Signal #1: ECD1A.CH Signal #2: ECD2B.CH
 Acq On : 13 Jun 2018 22:09
 Operator : SM/UA
 Sample : PB110158BSD
 Misc :
 ALS Vial : 19 Sample Multiplier: 1

Instrument :
 ECD_O
 ClientSampleId :
 PB110158BSD

Integration File signal 1: autoint1.e
 Integration File signal 2: autoint2.e
 Quant Time: Jun 14 03:15:06 2018
 Quant Method : Z:\pestpcbsrv\HPCHEM1\ECD_O\methods\PO061218.M
 Quant Title : GC EXTRACTABLES
 QLast Update : Wed Jun 13 03:54:48 2018
 Response via : Initial Calibration
 Integrator: ChemStation 6890 Scale Mode: Small noise peaks clipped

Volume Inj. : 2 µl
 Signal #1 Phase : ZB-MR1 Signal #2 Phase: ZB-MR2
 Signal #1 Info : 30Mx0.32mmx 0.50µ Signal #2 Info : 30M x 0.32mm x 0.25µm

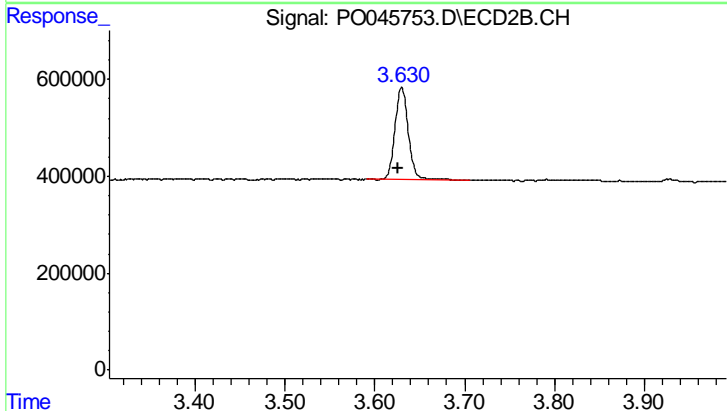




#1 Tetrachloro-m-xylene

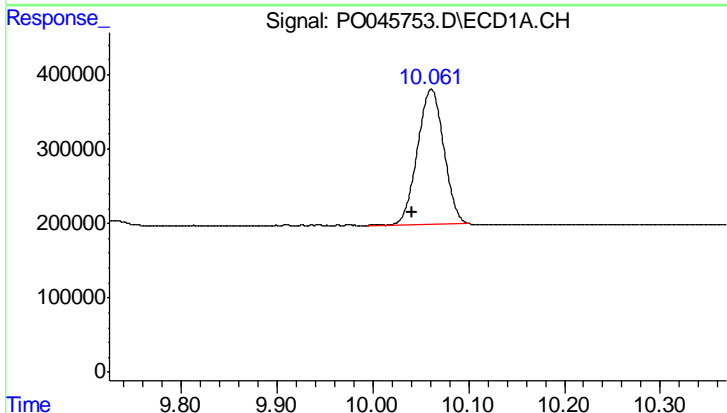
R.T.: 4.397 min
 Delta R.T.: 0.009 min
 Response: 4102684
 Conc: 21.05 ng/ml

Instrument :
 ECD_O
 ClientSampleId :
 PB110158BSD



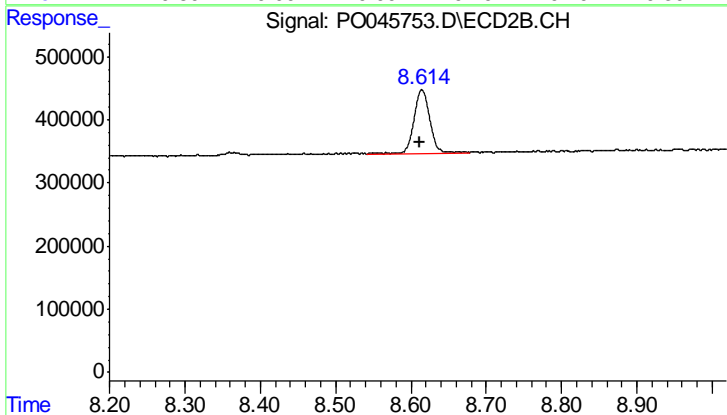
#1 Tetrachloro-m-xylene

R.T.: 3.630 min
 Delta R.T.: 0.004 min
 Response: 1998142
 Conc: 17.58 ng/ml



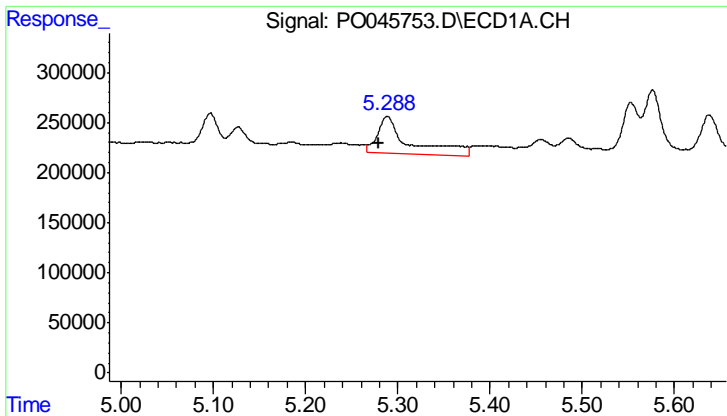
#2 Decachlorobiphenyl

R.T.: 10.061 min
 Delta R.T.: 0.019 min
 Response: 3468956
 Conc: 24.78 ng/ml



#2 Decachlorobiphenyl

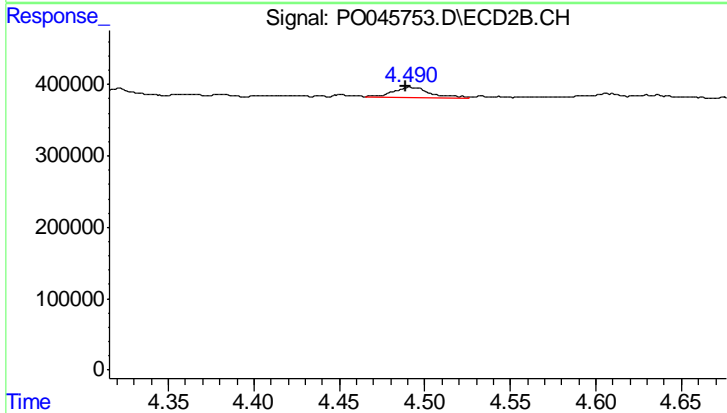
R.T.: 8.614 min
 Delta R.T.: 0.003 min
 Response: 1462051
 Conc: 20.91 ng/ml



#3 AR-1016-1

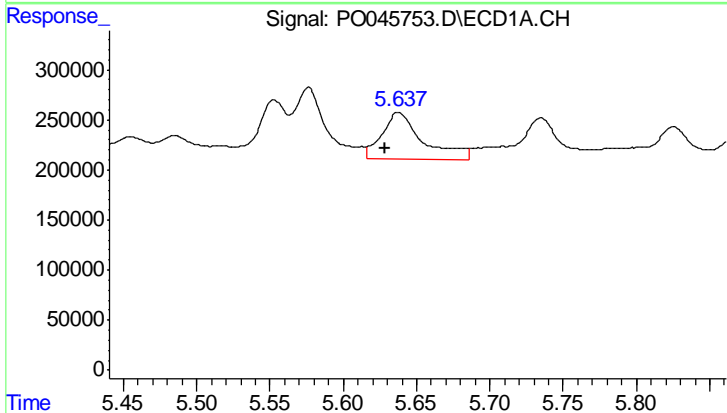
R.T.: 5.288 min
 Delta R.T.: 0.009 min
 Response: 887336
 Conc: 175.26 ng/ml

Instrument :
 ECD_O
 ClientSampleId :
 PB110158BSD



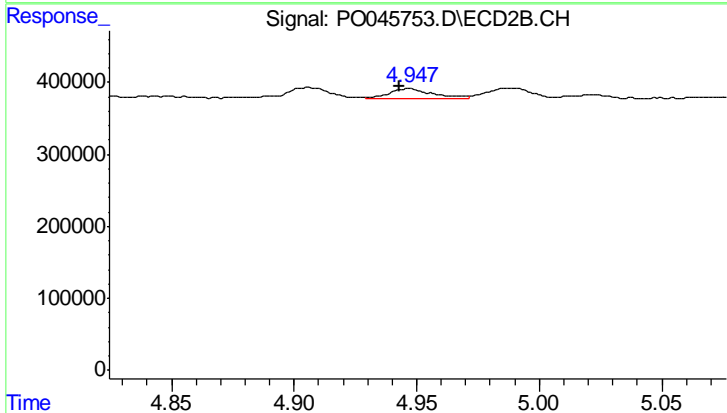
#3 AR-1016-1

R.T.: 4.491 min
 Delta R.T.: 0.003 min
 Response: 231366
 Conc: 68.66 ng/ml



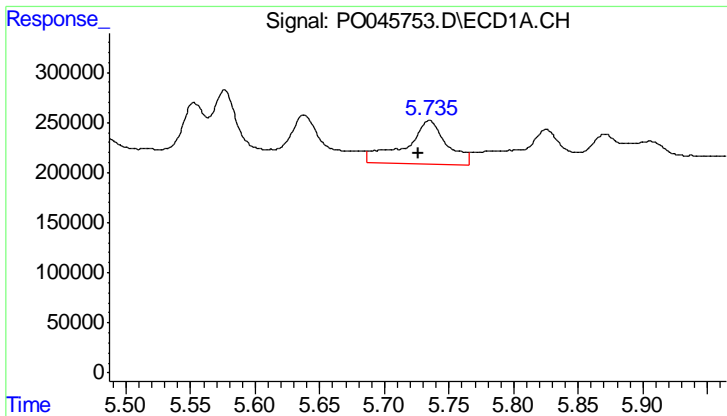
#4 AR-1016-2

R.T.: 5.638 min
 Delta R.T.: 0.009 min
 Response: 923878
 Conc: 144.61 ng/ml



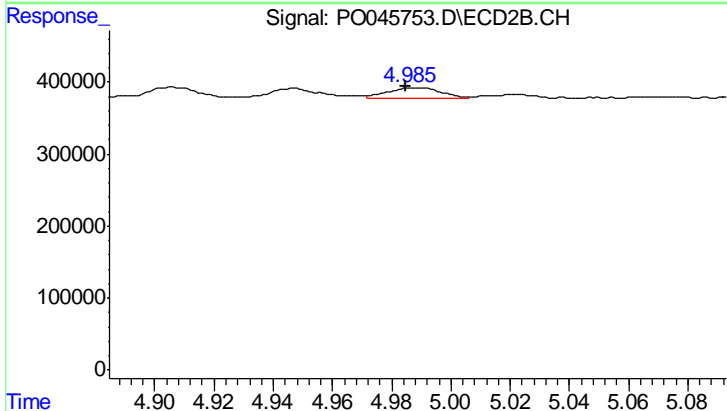
#4 AR-1016-2

R.T.: 4.947 min
 Delta R.T.: 0.004 min
 Response: 164185
 Conc: 67.02 ng/ml

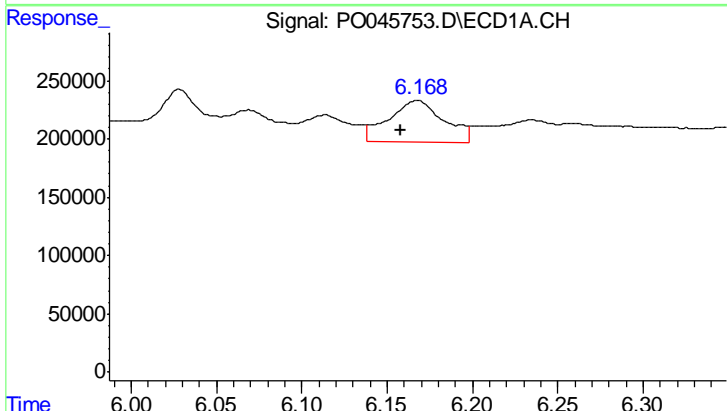


#5 AR-1016-3
 R.T.: 5.735 min
 Delta R.T.: 0.009 min
 Response: 994927
 Conc: 188.75 ng/ml

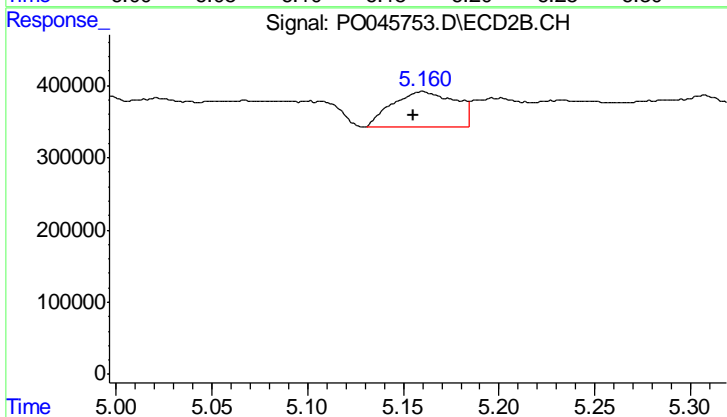
Instrument :
 ECD_O
 ClientSampleId :
 PB110158BSD



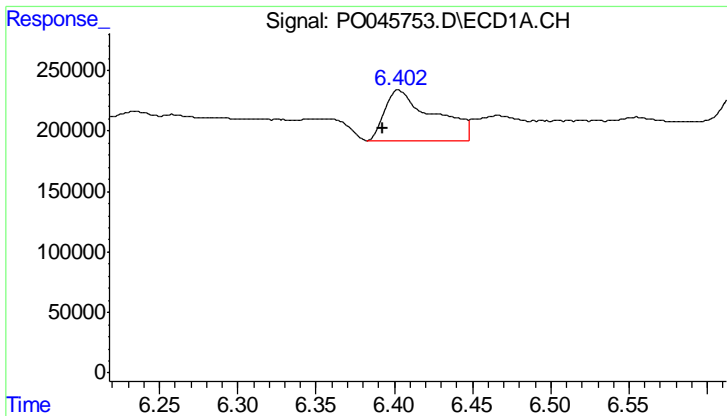
#5 AR-1016-3
 R.T.: 4.990 min
 Delta R.T.: 0.005 min
 Response: 182843
 Conc: 57.15 ng/ml



#6 AR-1016-4
 R.T.: 6.168 min
 Delta R.T.: 0.010 min
 Response: 804665
 Conc: 143.36 ng/ml



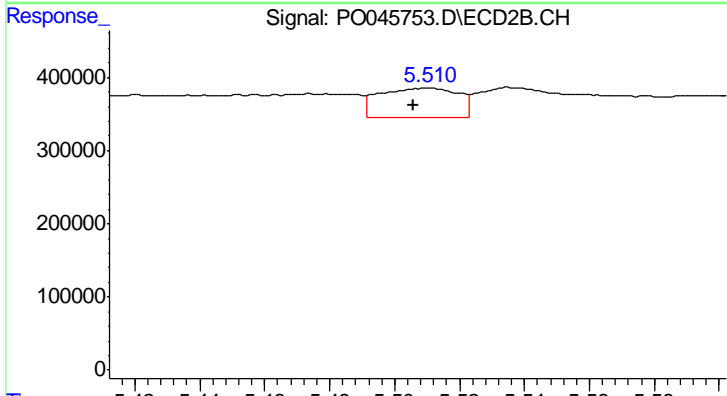
#6 AR-1016-4
 R.T.: 5.160 min
 Delta R.T.: 0.004 min
 Response: 1111498
 Conc: 317.95 ng/ml



#7 AR-1016-5

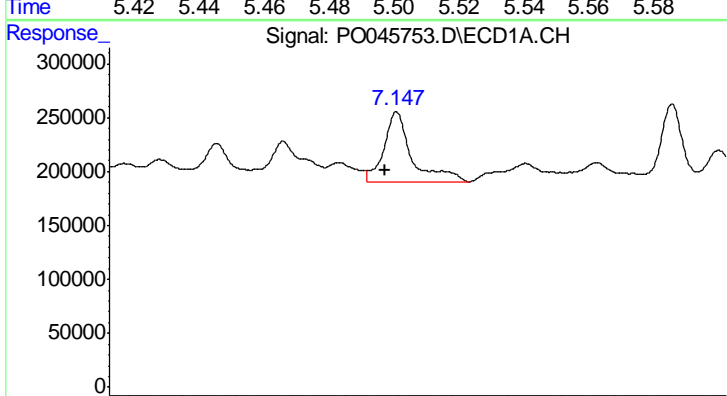
R.T.: 6.403 min
 Delta R.T.: 0.011 min
 Response: 910440
 Conc: 194.41 ng/ml

Instrument :
 ECD_O
 ClientSampleId :
 PB110158BSD



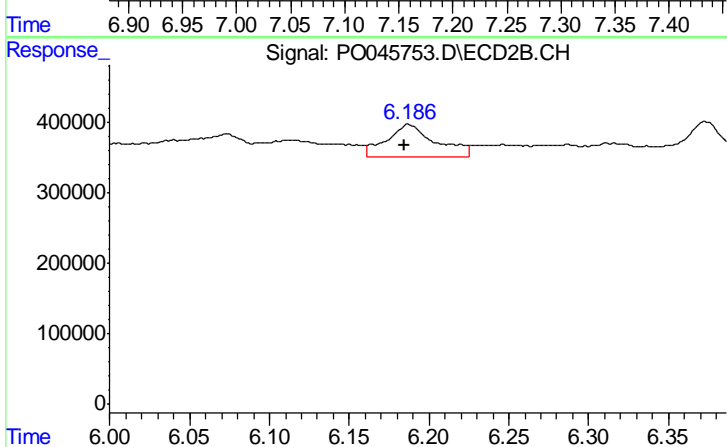
#7 AR-1016-5

R.T.: 5.511 min
 Delta R.T.: 0.005 min
 Response: 672848
 Conc: 209.57 ng/ml



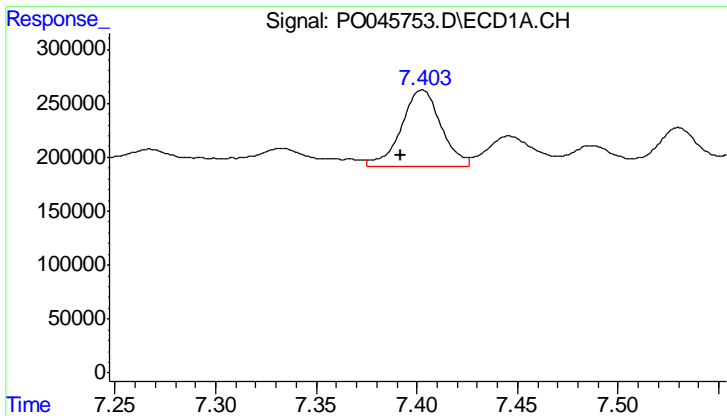
#31 AR-1260-1

R.T.: 7.148 min
 Delta R.T.: 0.010 min
 Response: 1162959
 Conc: 116.54 ng/ml



#31 AR-1260-1

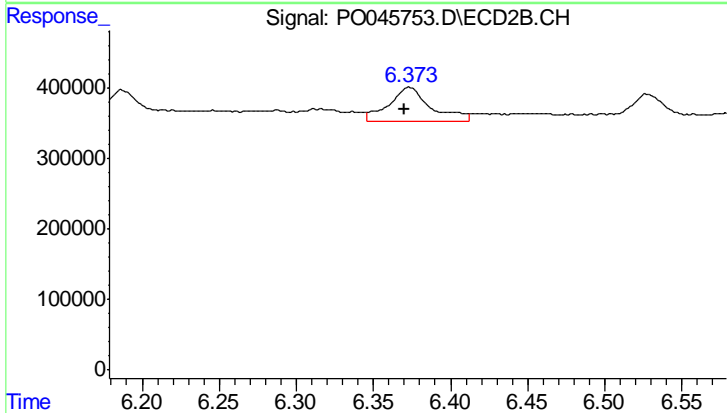
R.T.: 6.187 min
 Delta R.T.: 0.003 min
 Response: 983870
 Conc: 154.19 ng/ml



#32 AR-1260-2

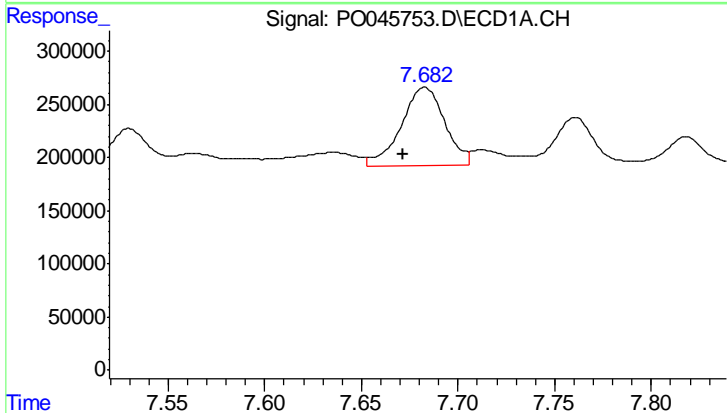
R.T.: 7.403 min
 Delta R.T.: 0.011 min
 Response: 980772
 Conc: 85.45 ng/ml

Instrument :
 ECD_O
 ClientSampleId :
 PB110158BSD



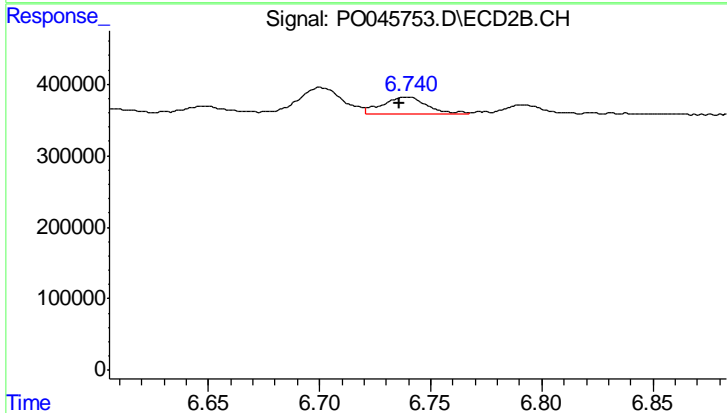
#32 AR-1260-2

R.T.: 6.373 min
 Delta R.T.: 0.003 min
 Response: 900608
 Conc: 119.90 ng/ml



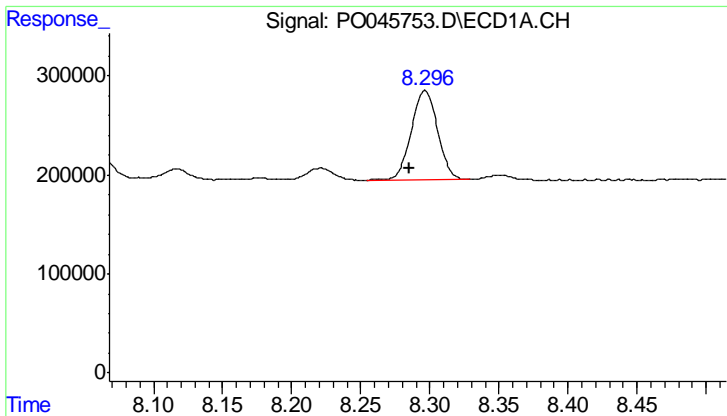
#33 AR-1260-3

R.T.: 7.683 min
 Delta R.T.: 0.011 min
 Response: 1157428
 Conc: 88.51 ng/ml



#33 AR-1260-3

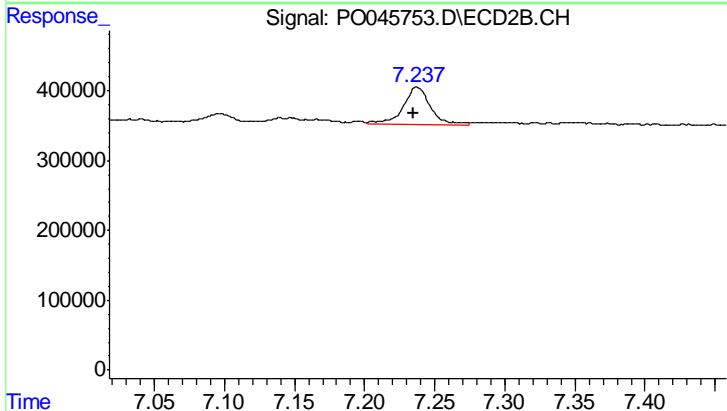
R.T.: 6.740 min
 Delta R.T.: 0.004 min
 Response: 345741
 Conc: 63.44 ng/ml



#34 AR-1260-4

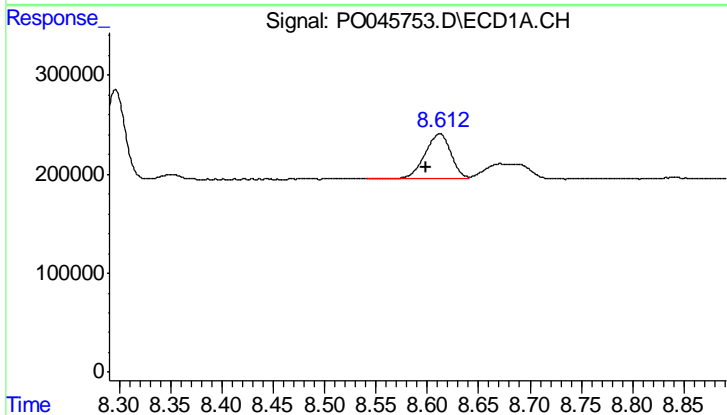
R.T.: 8.297 min
 Delta R.T.: 0.011 min
 Response: 1197008
 Conc: 68.94 ng/ml

Instrument :
 ECD_O
 ClientSampleId :
 PB110158BSD



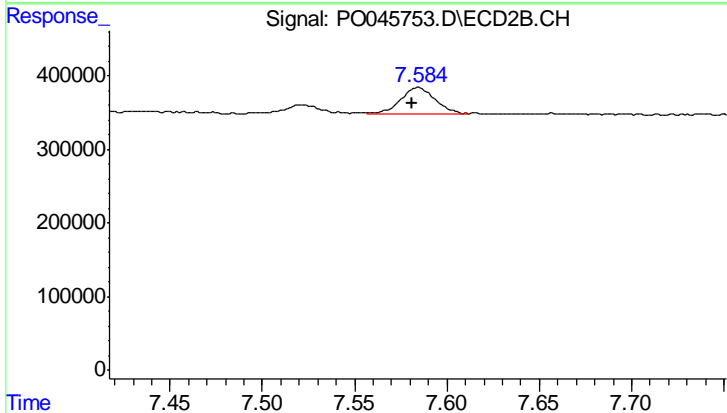
#34 AR-1260-4

R.T.: 7.237 min
 Delta R.T.: 0.002 min
 Response: 726584
 Conc: 67.07 ng/ml



#35 AR-1260-5

R.T.: 8.612 min
 Delta R.T.: 0.013 min
 Response: 812834
 Conc: 75.00 ng/ml



#35 AR-1260-5

R.T.: 7.584 min
 Delta R.T.: 0.003 min
 Response: 491436
 Conc: 65.08 ng/ml