

Data Path : Z:\pestpcbsrv\HPCHEM1\ECD_0\Data\P0061319\
 Data File : P0057126.D
 Signal(s) : Signal #1: ECD1A.CH Signal #2: ECD2B.CH
 Acq On : 13 Jun 2019 16:10
 Operator : SM/SJ
 Sample : K2944-05
 Misc :
 ALS Vial : 4 Sample Multiplier: 1

Instrument :
 ECD_0
 ClientSampleId :
 FESB-5(4.5-5)

Integration File signal 1: autoint1.e
 Integration File signal 2: autoint2.e
 Quant Time: Jun 14 03:43:37 2019
 Quant Method : Z:\pestpcbsrv\HPCHEM1\ECD_0\methods\P0052319.M
 Quant Title : GC EXTRACTABLES
 QLast Update : Fri May 24 00:11:05 2019
 Response via : Initial Calibration
 Integrator: ChemStation 6890 Scale Mode: Small noise peaks clipped

Volume Inj. : 2 µl
 Signal #1 Phase : ZB-MR1 Signal #2 Phase: ZB-MR2
 Signal #1 Info : 30Mx0.32mmx 0.50µ Signal #2 Info : 30M x 0.32mm x 0.25µm

	Compound	RT#1	RT#2	Resp#1	Resp#2	ng/ml	ng/ml

System Monitoring Compounds							
1)	SA Tetrachlo...	4.255	3.563	822990	734635	21.497	22.276
2)	SA Decachlor...	9.828	8.497	869796	580567	17.721	16.282
Target Compounds							
6)	L1 AR-1016-4	0.000	4.935	0	33686	N.D.	40.691 #
7)	L1 AR-1016-5	0.000	5.095	0	35812	N.D.	33.385 #
10)	L2 AR-1221-3	0.000	3.993	0	99157	N.D.	82.834 #
11)	L3 AR-1232-1	0.000	3.993	0	99157	N.D.	110.375 #
14)	L3 AR-1232-4	0.000	4.935	0	33686	N.D.	68.372 #
15)	L3 AR-1232-5	0.000	5.095	0	35812	N.D.	63.581 #
19)	L4 AR-1242-4	0.000	4.935	0	33686	N.D.	34.617 #
20)	L4 AR-1242-5	0.000	5.424	0	93019	N.D.	78.678 #
22)	L5 AR-1248-2	0.000	4.935	0	33686	N.D.	26.515 #
23)	L5 AR-1248-3	0.000	4.935	0	33686	N.D.	25.795 #
24)	L5 AR-1248-4	0.000	5.095	0	35812	N.D.	22.614 #
25)	L5 AR-1248-5	0.000	5.424	0	93019	N.D.	56.203 #
26)	L6 AR-1254-1	0.000	5.424	0	93019	N.D.	35.172 #
27)	L6 AR-1254-2	6.533	5.570	429128	88007	110.483	40.823 #
28)	L6 AR-1254-3	0.000	5.970	0	480219	N.D.	131.169 #
29)	L6 AR-1254-4	0.000	6.197	0	106038	N.D.	48.267 #
30)	L6 AR-1254-5	7.544	6.609	589479	994759	156.541	313.780 #
31)	L7 AR-1260-1	0.000	6.097	0	286448	N.D.	143.197 #
32)	L7 AR-1260-2	7.258	6.285	763290	391340	252.397	158.761 #
33)	L7 AR-1260-3	7.569	6.436	562504	431947	233.496	192.556
34)	L7 AR-1260-4	0.000	6.902	0	235393	N.D.	126.486 #
35)	L7 AR-1260-5	8.149	7.145	430918	508431	90.111	117.902 #
36)	L8 AR-1262-1	7.569	6.644	562504	260802	120.272	62.482 #
37)	L8 AR-1262-2	8.149	7.145	430918	508431	56.523	74.001 #
38)	L8 AR-1262-3	0.000	7.424	0	88221	N.D.	29.871 #
39)	L8 AR-1262-4	0.000	7.489	0	312796	N.D.	60.031 #
40)	L8 AR-1262-5	0.000	7.982	0	90220	N.D.	38.852 #
41)	L9 AR-1268-1	0.000	7.424	0	88221	N.D.	11.818 #
42)	L9 AR-1268-2	0.000	7.489	0	312796	N.D.	44.793 #
43)	L9 AR-1268-3	8.783	7.675	758725	657165	115.150	110.721
44)	L9 AR-1268-4	0.000	7.982	0	90220	N.D.	38.651 #
45)	L9 AR-1268-5	0.000	8.258	0	84432	N.D.	4.878 #

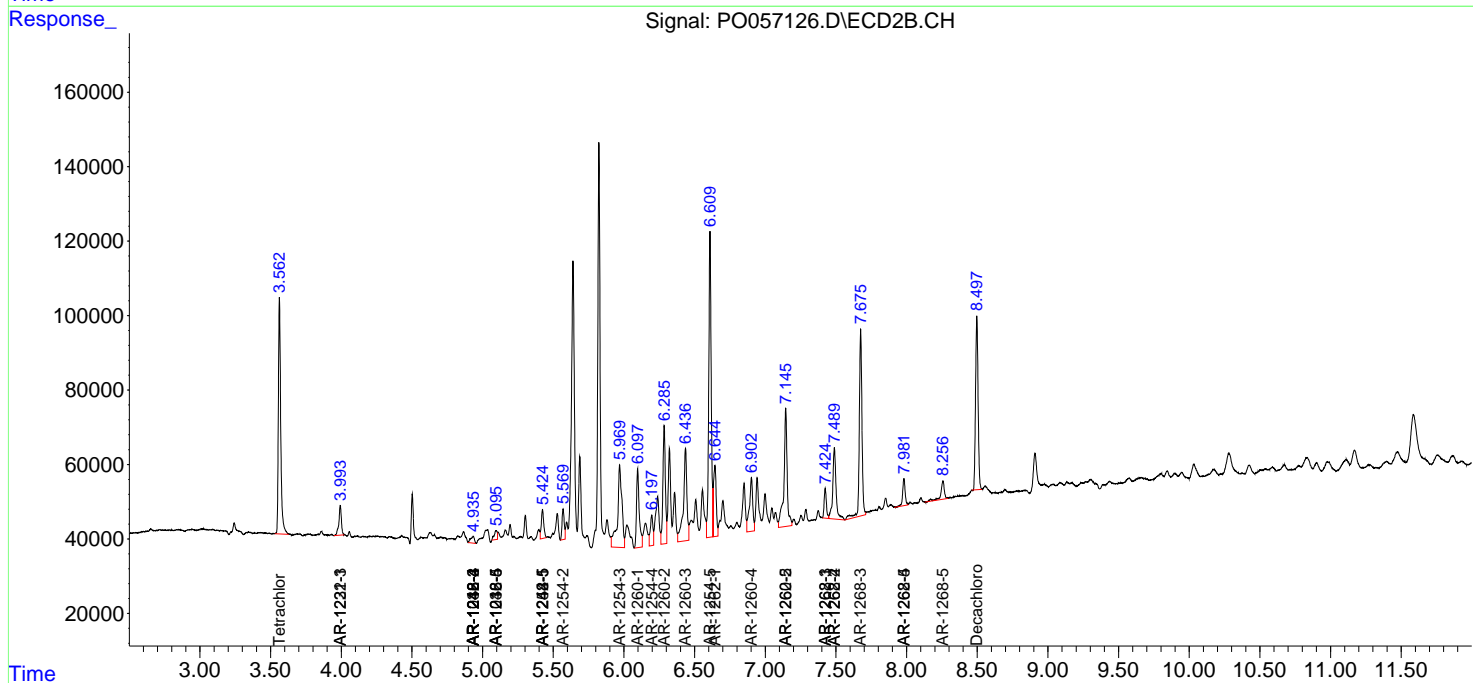
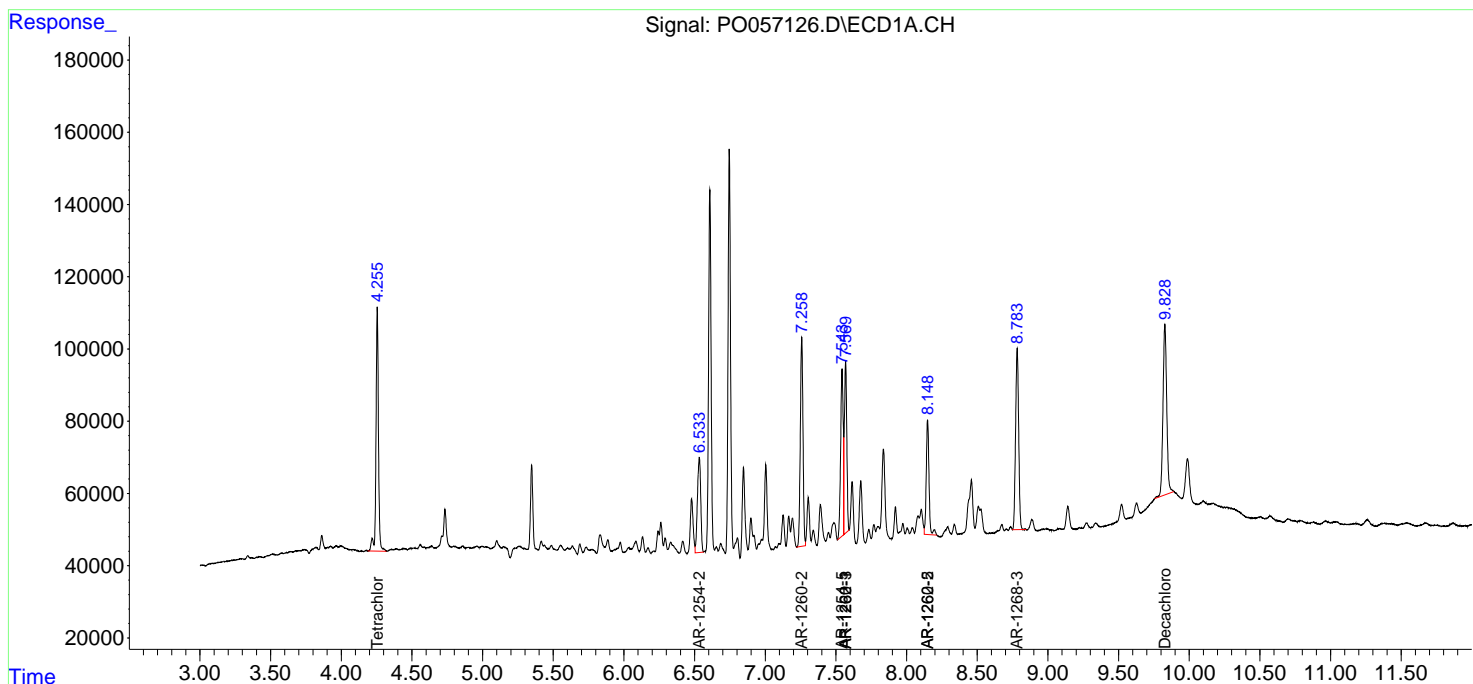
(f)=RT Delta > 1/2 Window (#)=Amounts differ by > 25% (m)=manual int.

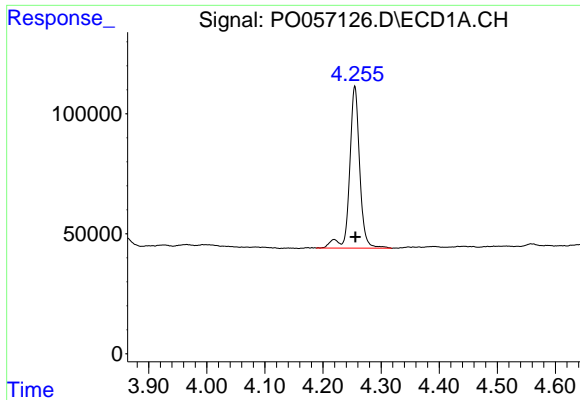
Data Path : Z:\pestpcbsrv\HPCHEM1\ECD_O\Data\P0061319\
 Data File : P0057126.D
 Signal(s) : Signal #1: ECD1A.CH Signal #2: ECD2B.CH
 Acq On : 13 Jun 2019 16:10
 Operator : SM/SJ
 Sample : K2944-05
 Misc :
 ALS Vial : 4 Sample Multiplier: 1

Instrument :
 ECD_O
 Client Sampled :
 FESB-5(4.5-5)

Integration File signal 1: autoint1.e
 Integration File signal 2: autoint2.e
 Quant Time: Jun 14 03:43:37 2019
 Quant Method : Z:\pestpcbsrv\HPCHEM1\ECD_O\methods\P0052319.M
 Quant Title : GC EXTRACTABLES
 QLast Update : Fri May 24 00:11:05 2019
 Response via : Initial Calibration
 Integrator: ChemStation 6890 Scale Mode: Small noise peaks clipped

Volume Inj. : 2 µl
 Signal #1 Phase : ZB-MR1 Signal #2 Phase: ZB-MR2
 Signal #1 Info : 30Mx0.32mmx 0.50µ Signal #2 Info : 30M x 0.32mm x 0.25µm

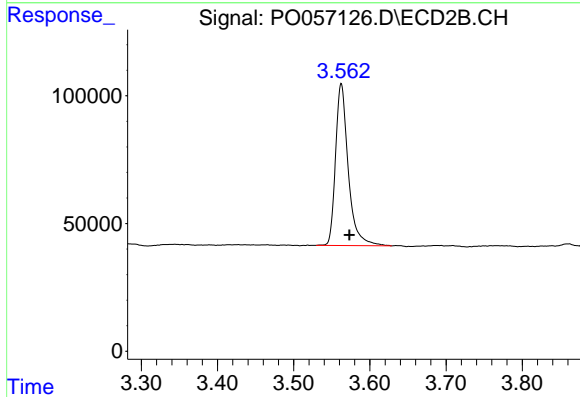




#1 Tetrachloro-m-xylene

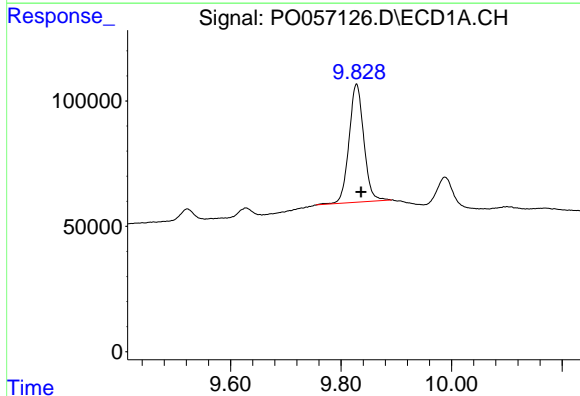
R.T.: 4.255 min
 Delta R.T.: -0.001 min
 Response: 822990
 Conc: 21.50 ng/ml

Instrument :
 ECD_O
 ClientSampleId :
 FESB-5(4.5-5)



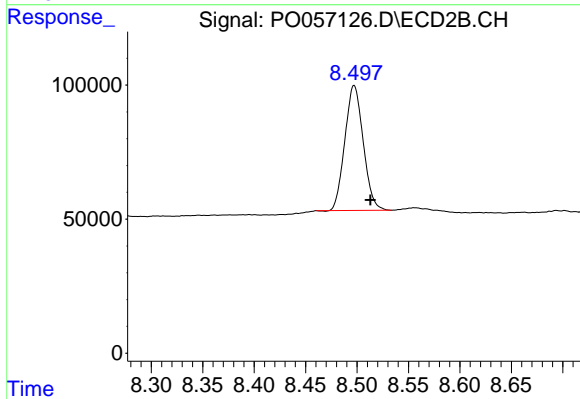
#1 Tetrachloro-m-xylene

R.T.: 3.563 min
 Delta R.T.: -0.011 min
 Response: 734635
 Conc: 22.28 ng/ml



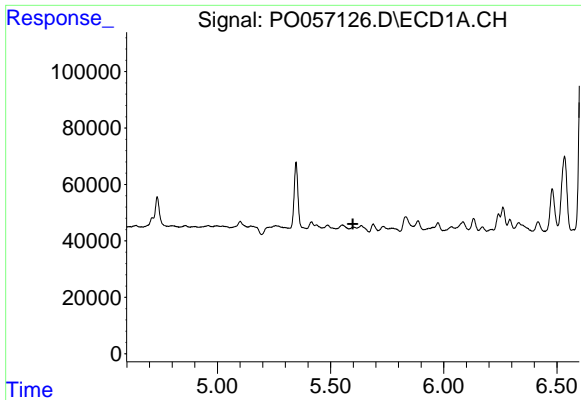
#2 Decachlorobiphenyl

R.T.: 9.828 min
 Delta R.T.: -0.008 min
 Response: 869796
 Conc: 17.72 ng/ml



#2 Decachlorobiphenyl

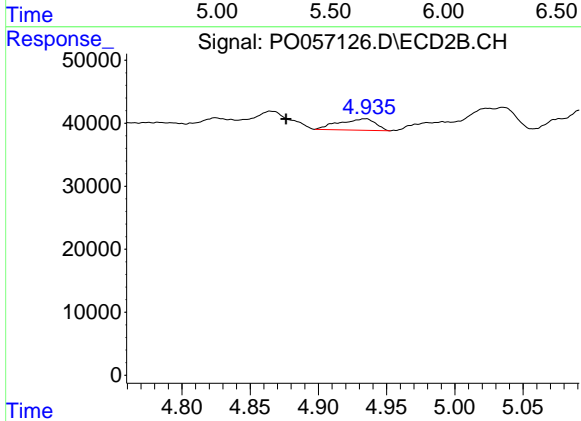
R.T.: 8.497 min
 Delta R.T.: -0.016 min
 Response: 580567
 Conc: 16.28 ng/ml



#6 AR-1016-4

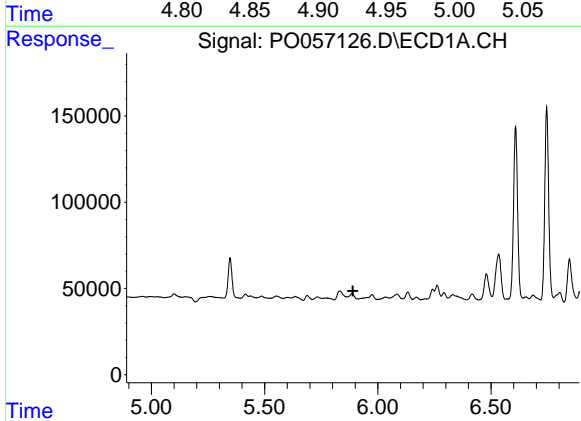
R.T.: 0.000 min
 Exp R.T.: 5.599 min
 Response: 0
 Conc: N.D.

Instrument :
 ECD_O
 ClientSampled :
 FESB-5(4.5-5)



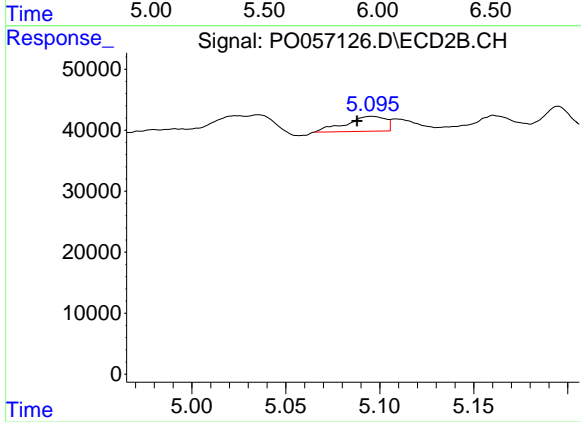
#6 AR-1016-4

R.T.: 4.935 min
 Delta R.T.: 0.059 min
 Response: 33686
 Conc: 40.69 ng/ml



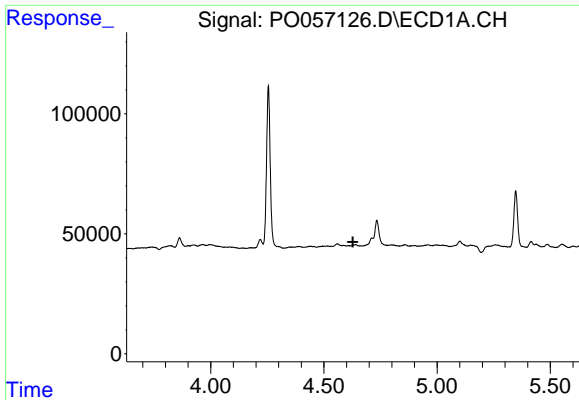
#7 AR-1016-5

R.T.: 0.000 min
 Exp R.T.: 5.890 min
 Response: 0
 Conc: N.D.



#7 AR-1016-5

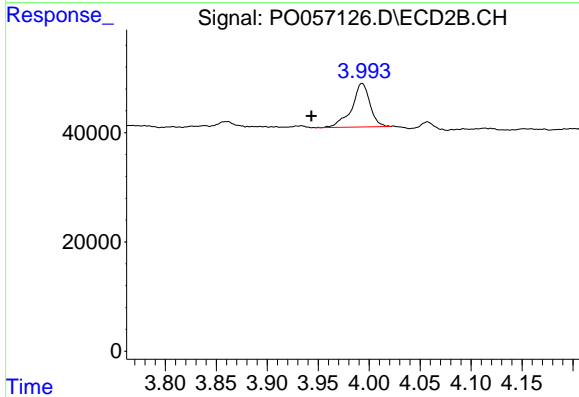
R.T.: 5.095 min
 Delta R.T.: 0.007 min
 Response: 35812
 Conc: 33.38 ng/ml



#10 AR-1221-3

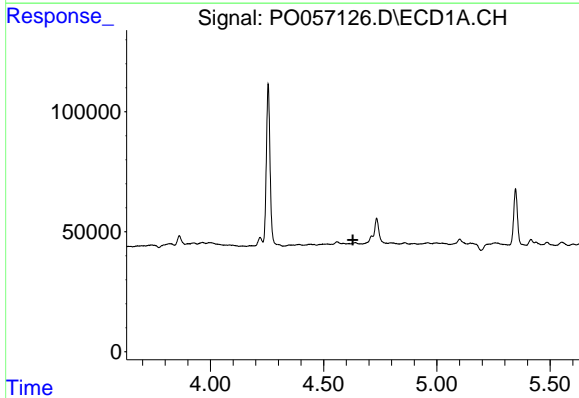
R.T.: 0.000 min
 Exp R.T. : 4.628 min
 Response: 0
 Conc: N.D.

Instrument :
 ECD_O
 ClientSampleId :
 FESB-5(4.5-5)



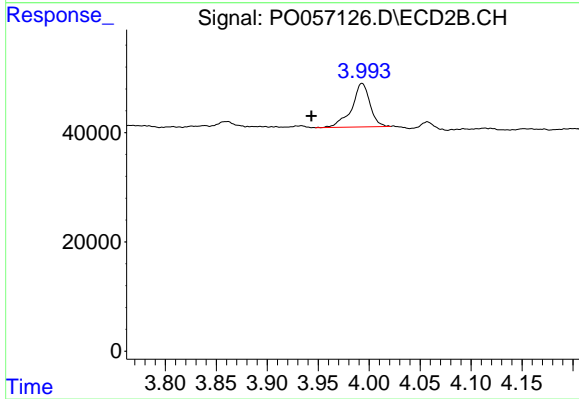
#10 AR-1221-3

R.T.: 3.993 min
 Delta R.T.: 0.050 min
 Response: 99157
 Conc: 82.83 ng/ml



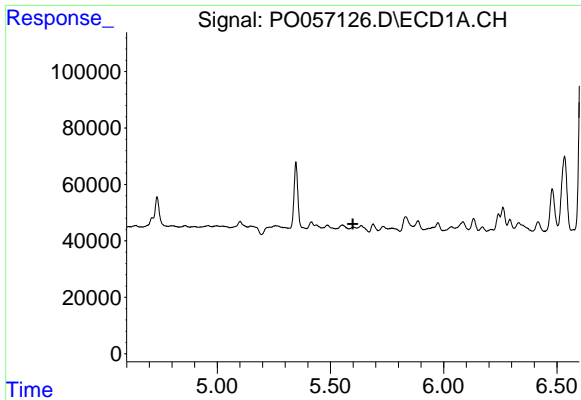
#11 AR-1232-1

R.T.: 0.000 min
 Exp R.T. : 4.629 min
 Response: 0
 Conc: N.D.



#11 AR-1232-1

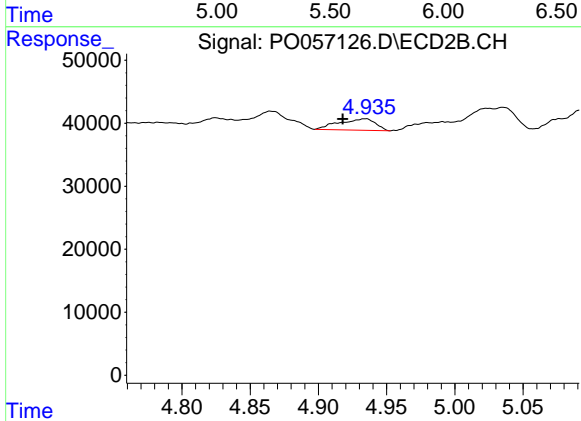
R.T.: 3.993 min
 Delta R.T.: 0.050 min
 Response: 99157
 Conc: 110.37 ng/ml



#14 AR-1232-4

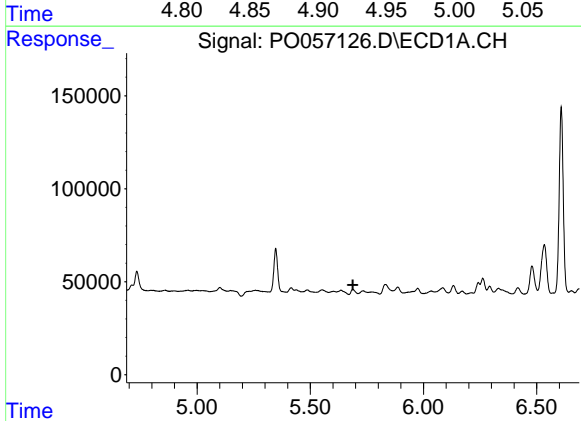
R.T.: 0.000 min
 Exp R.T.: 5.599 min
 Response: 0
 Conc: N.D.

Instrument :
 ECD_O
 ClientSampleId :
 FESB-5(4.5-5)



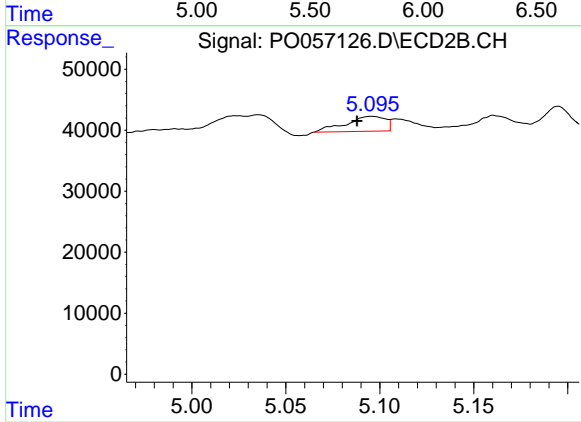
#14 AR-1232-4

R.T.: 4.935 min
 Delta R.T.: 0.017 min
 Response: 33686
 Conc: 68.37 ng/ml



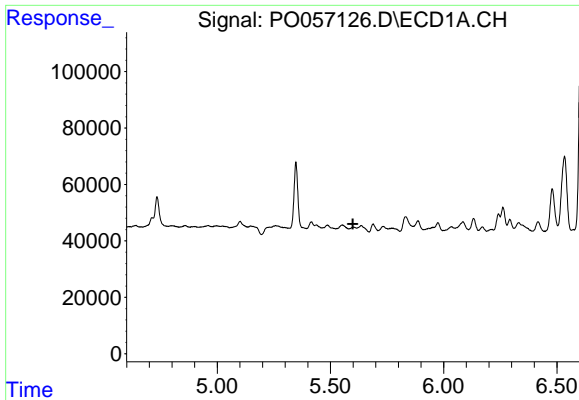
#15 AR-1232-5

R.T.: 0.000 min
 Exp R.T.: 5.688 min
 Response: 0
 Conc: N.D.



#15 AR-1232-5

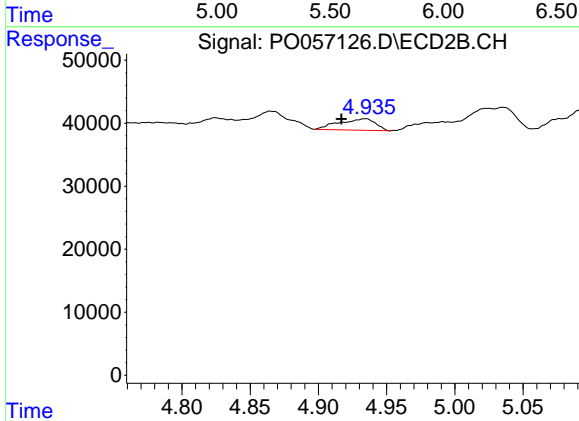
R.T.: 5.095 min
 Delta R.T.: 0.007 min
 Response: 35812
 Conc: 63.58 ng/ml



#19 AR-1242-4

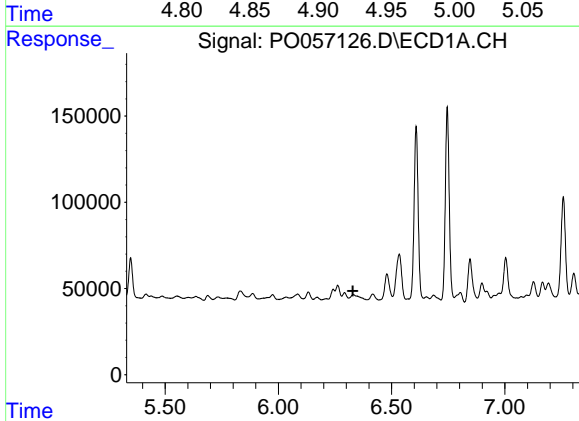
R.T.: 0.000 min
 Exp R.T.: 5.599 min
 Response: 0
 Conc: N.D.

Instrument :
 ECD_O
 ClientSampleId :
 FESB-5(4.5-5)



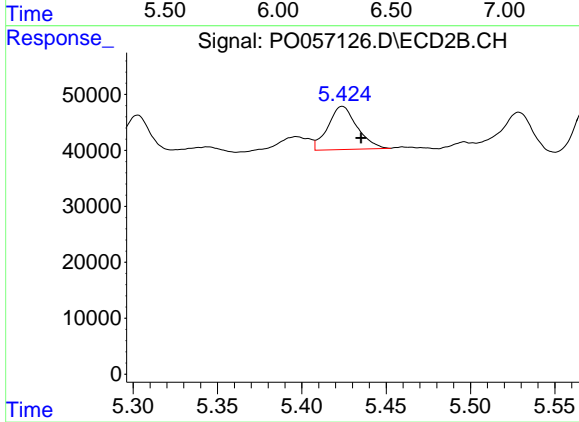
#19 AR-1242-4

R.T.: 4.935 min
 Delta R.T.: 0.018 min
 Response: 33686
 Conc: 34.62 ng/ml



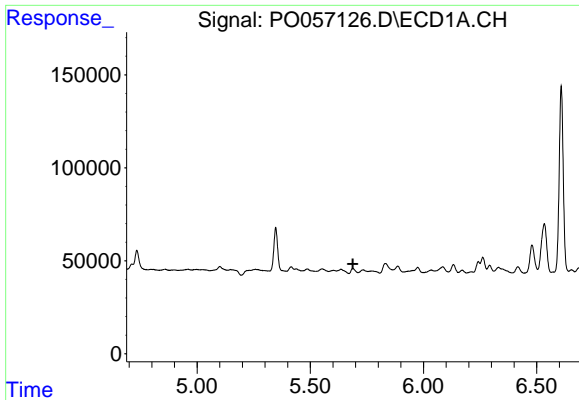
#20 AR-1242-5

R.T.: 0.000 min
 Exp R.T.: 6.329 min
 Response: 0
 Conc: N.D.



#20 AR-1242-5

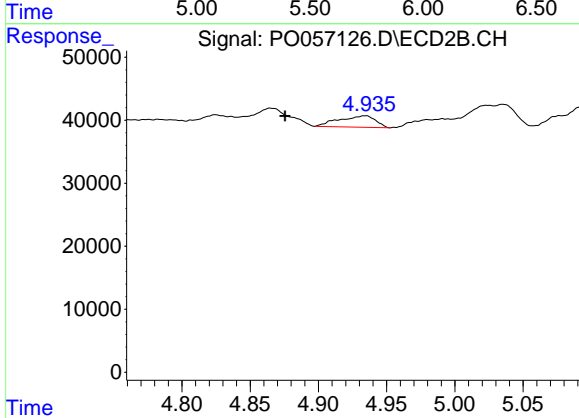
R.T.: 5.424 min
 Delta R.T.: -0.011 min
 Response: 93019
 Conc: 78.68 ng/ml



#22 AR-1248-2

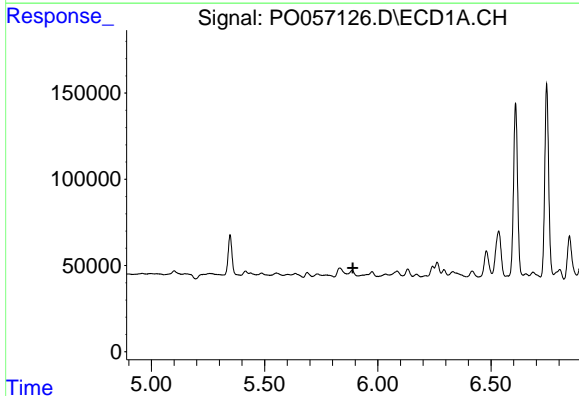
R.T.: 0.000 min
 Exp R.T. : 5.688 min
 Response: 0
 Conc: N.D.

Instrument :
 ECD_O
ClientSampleId :
 FESB-5(4.5-5)



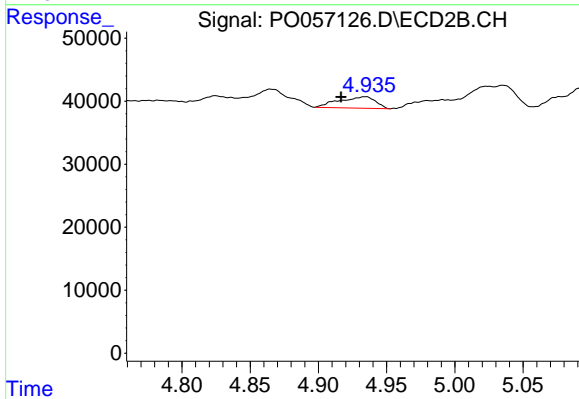
#22 AR-1248-2

R.T.: 4.935 min
 Delta R.T.: 0.060 min
 Response: 33686
 Conc: 26.51 ng/ml



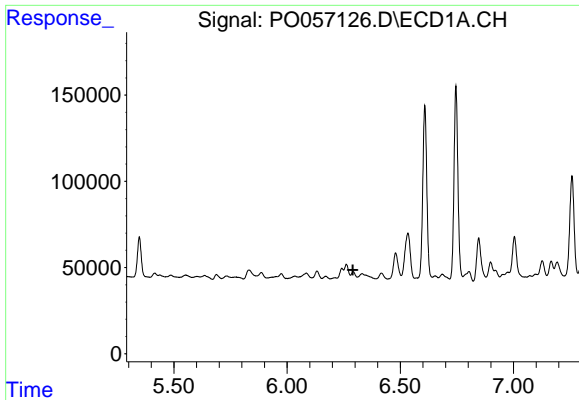
#23 AR-1248-3

R.T.: 0.000 min
 Exp R.T. : 5.890 min
 Response: 0
 Conc: N.D.



#23 AR-1248-3

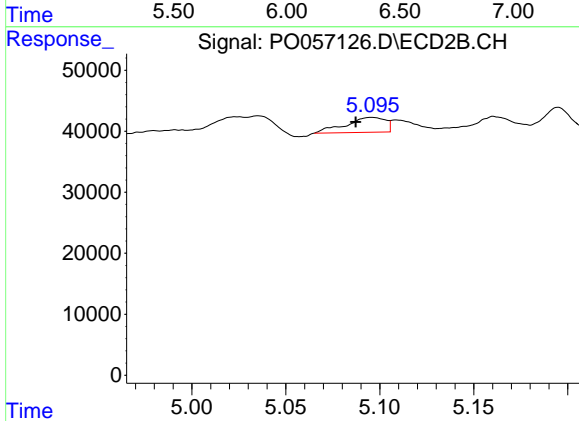
R.T.: 4.935 min
 Delta R.T.: 0.018 min
 Response: 33686
 Conc: 25.80 ng/ml



#24 AR-1248-4

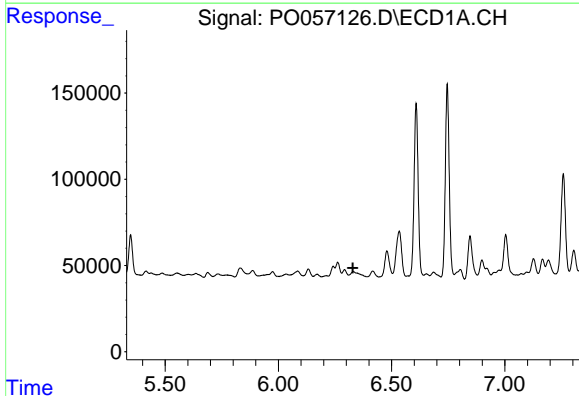
R.T.: 0.000 min
 Exp R.T.: 6.291 min
 Response: 0
 Conc: N.D.

Instrument :
 ECD_O
 ClientSampleId :
 FESB-5(4.5-5)



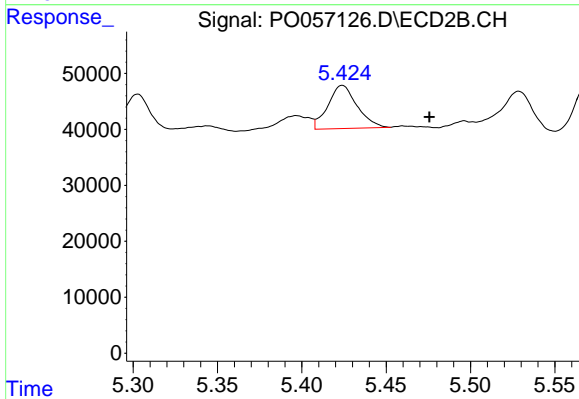
#24 AR-1248-4

R.T.: 5.095 min
 Delta R.T.: 0.008 min
 Response: 35812
 Conc: 22.61 ng/ml



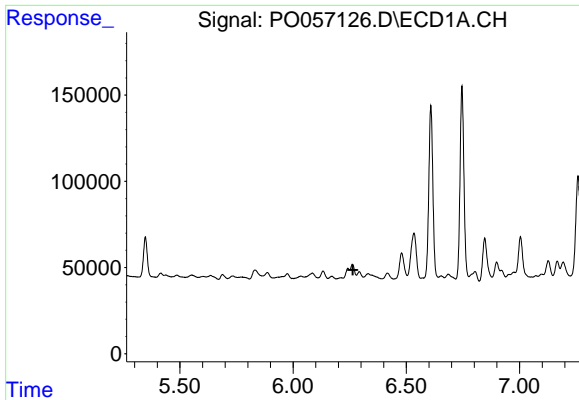
#25 AR-1248-5

R.T.: 0.000 min
 Exp R.T.: 6.329 min
 Response: 0
 Conc: N.D.



#25 AR-1248-5

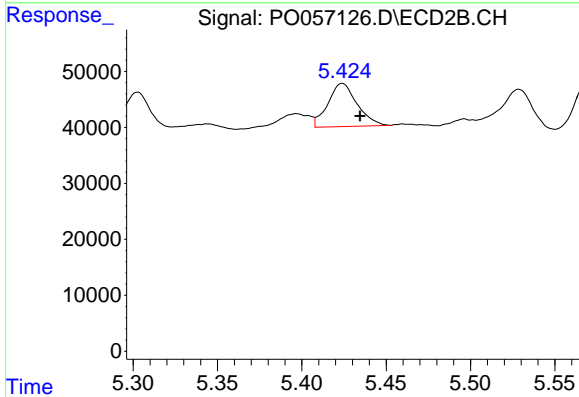
R.T.: 5.424 min
 Delta R.T.: -0.052 min
 Response: 93019
 Conc: 56.20 ng/ml



#26 AR-1254-1

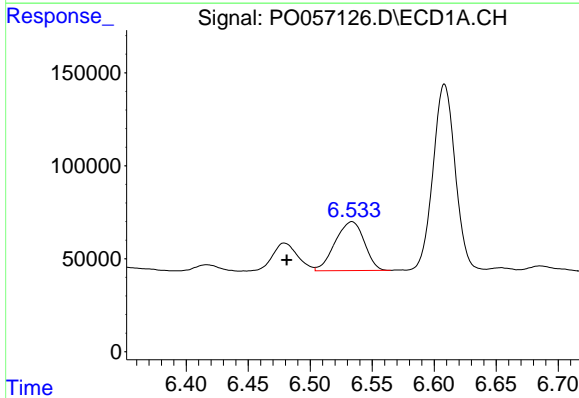
R.T.: 0.000 min
 Exp R.T.: 6.264 min
 Response: 0
 Conc: N.D.

Instrument :
 ECD_O
 ClientSampleId :
 FESB-5(4.5-5)



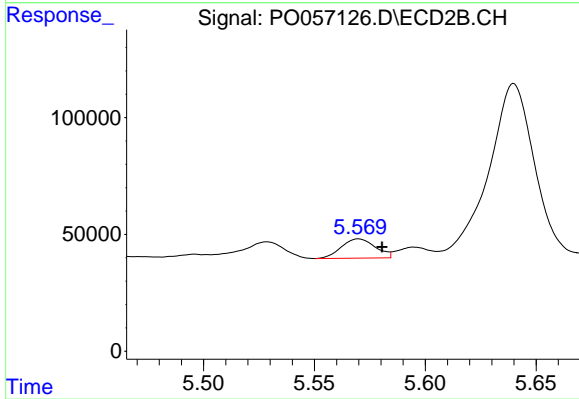
#26 AR-1254-1

R.T.: 5.424 min
 Delta R.T.: -0.011 min
 Response: 93019
 Conc: 35.17 ng/ml



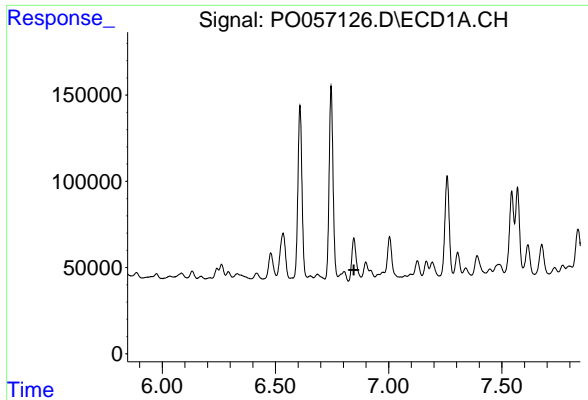
#27 AR-1254-2

R.T.: 6.533 min
 Delta R.T.: 0.052 min
 Response: 429128
 Conc: 110.48 ng/ml



#27 AR-1254-2

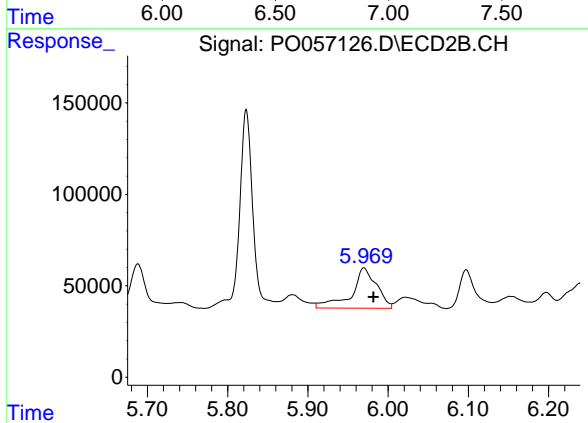
R.T.: 5.570 min
 Delta R.T.: -0.011 min
 Response: 88007
 Conc: 40.82 ng/ml



#28 AR-1254-3

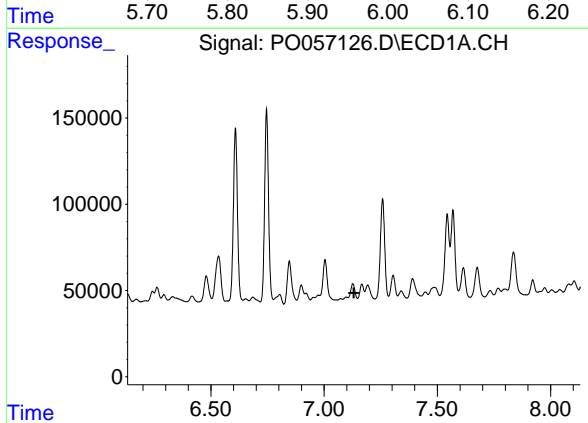
R.T.: 0.000 min
 Exp R.T.: 6.846 min
 Response: 0
 Conc: N.D.

Instrument :
 ECD_O
ClientSampleId :
 FESB-5(4.5-5)



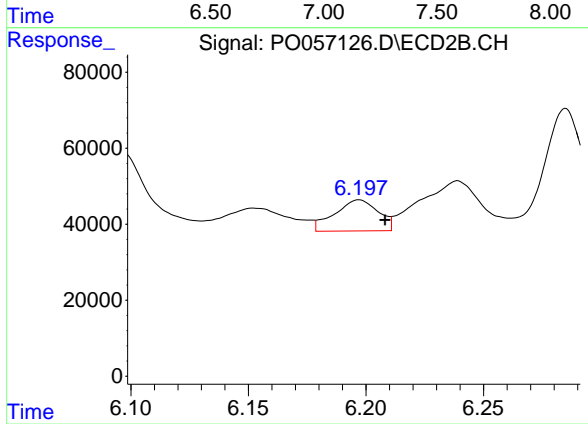
#28 AR-1254-3

R.T.: 5.970 min
 Delta R.T.: -0.012 min
 Response: 480219
 Conc: 131.17 ng/ml



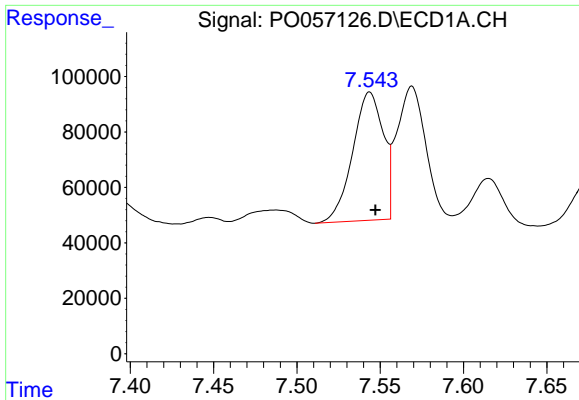
#29 AR-1254-4

R.T.: 0.000 min
 Exp R.T.: 7.131 min
 Response: 0
 Conc: N.D.



#29 AR-1254-4

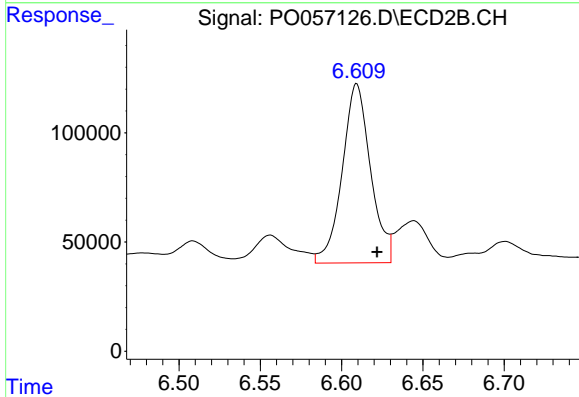
R.T.: 6.197 min
 Delta R.T.: -0.011 min
 Response: 106038
 Conc: 48.27 ng/ml



#30 AR-1254-5

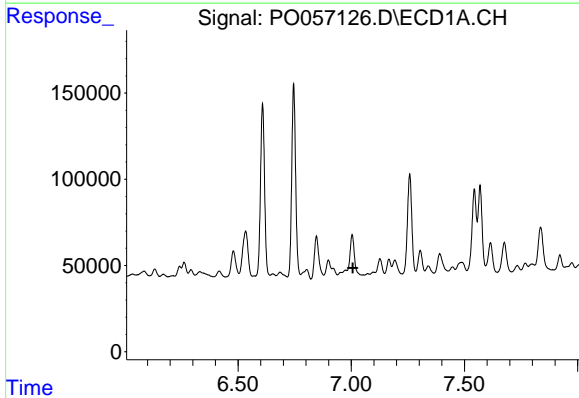
R.T.: 7.544 min
 Delta R.T.: -0.003 min
 Response: 589479
 Conc: 156.54 ng/ml

Instrument :
 ECD_O
 ClientSampleId :
 FESB-5(4.5-5)



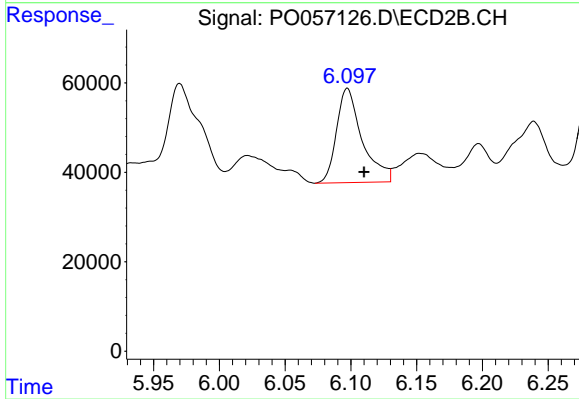
#30 AR-1254-5

R.T.: 6.609 min
 Delta R.T.: -0.013 min
 Response: 994759
 Conc: 313.78 ng/ml



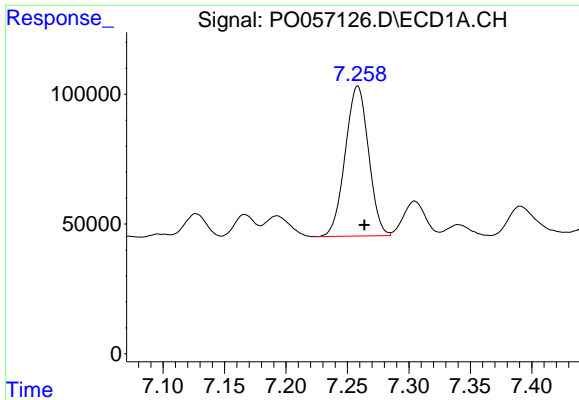
#31 AR-1260-1

R.T.: 0.000 min
 Exp R.T. : 7.008 min
 Response: 0
 Conc: N.D.



#31 AR-1260-1

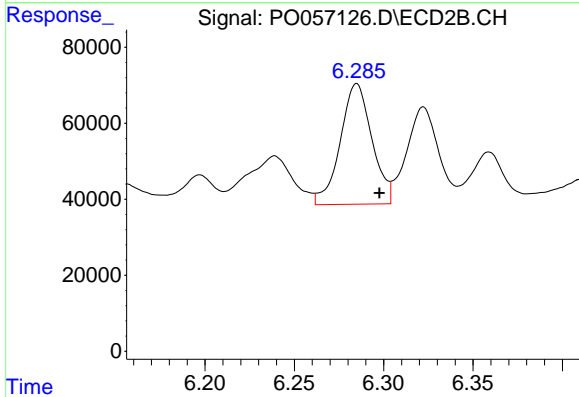
R.T.: 6.097 min
 Delta R.T.: -0.013 min
 Response: 286448
 Conc: 143.20 ng/ml



#32 AR-1260-2

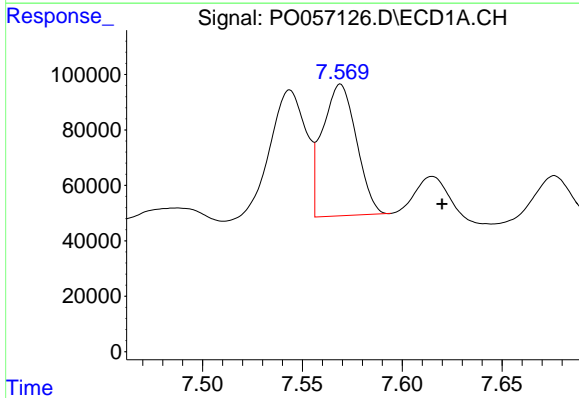
R.T.: 7.258 min
 Delta R.T.: -0.006 min
 Response: 763290
 Conc: 252.40 ng/ml

Instrument :
 ECD_O
ClientSampleId :
 FESB-5(4.5-5)



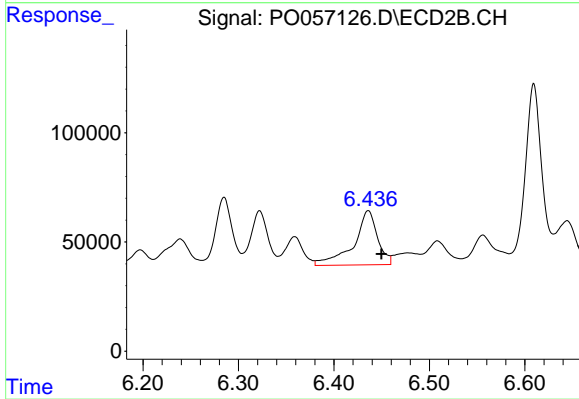
#32 AR-1260-2

R.T.: 6.285 min
 Delta R.T.: -0.013 min
 Response: 391340
 Conc: 158.76 ng/ml



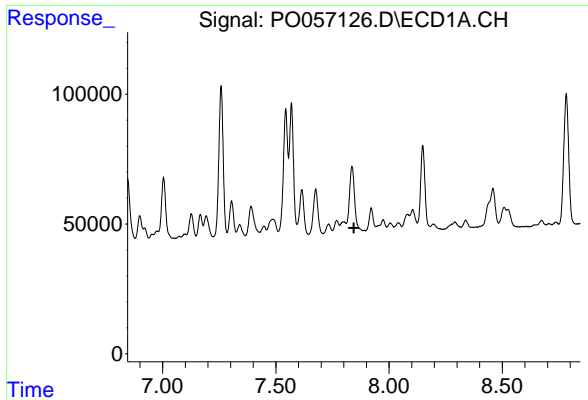
#33 AR-1260-3

R.T.: 7.569 min
 Delta R.T.: -0.051 min
 Response: 562504
 Conc: 233.50 ng/ml



#33 AR-1260-3

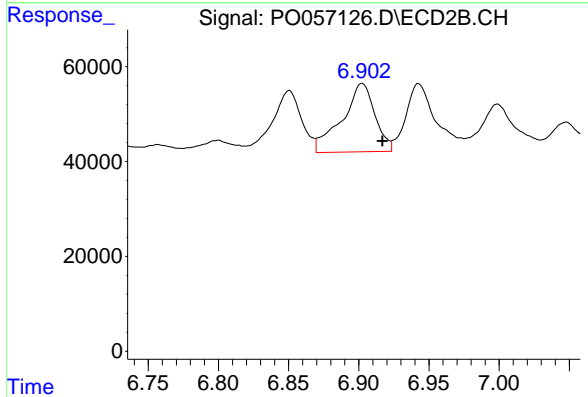
R.T.: 6.436 min
 Delta R.T.: -0.014 min
 Response: 431947
 Conc: 192.56 ng/ml



#34 AR-1260-4

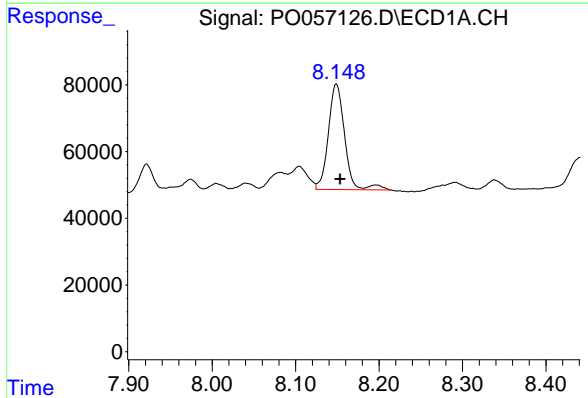
R.T.: 0.000 min
 Exp R.T.: 7.845 min
 Response: 0
 Conc: N.D.

Instrument :
 ECD_O
 ClientSampleId :
 FESB-5(4.5-5)



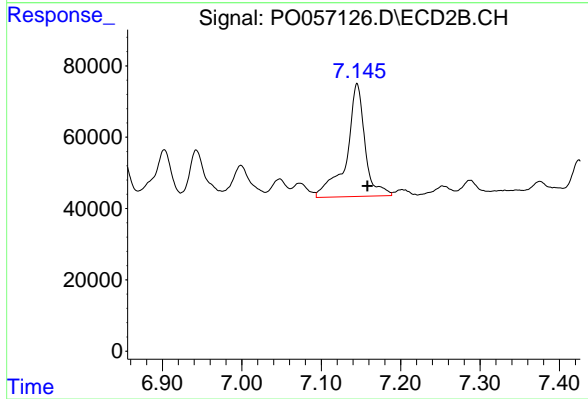
#34 AR-1260-4

R.T.: 6.902 min
 Delta R.T.: -0.015 min
 Response: 235393
 Conc: 126.49 ng/ml



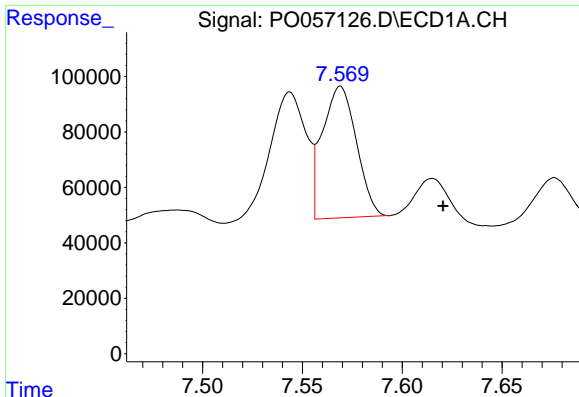
#35 AR-1260-5

R.T.: 8.149 min
 Delta R.T.: -0.005 min
 Response: 430918
 Conc: 90.11 ng/ml



#35 AR-1260-5

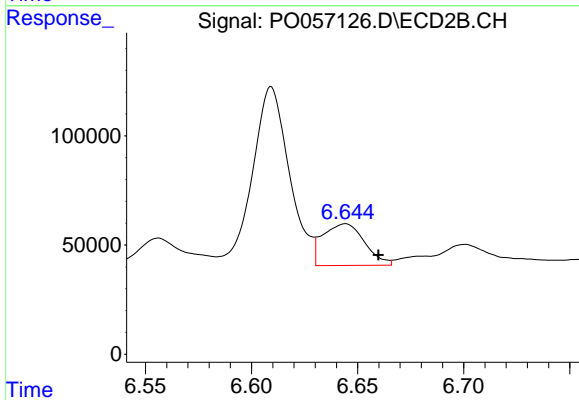
R.T.: 7.145 min
 Delta R.T.: -0.013 min
 Response: 508431
 Conc: 117.90 ng/ml



#36 AR-1262-1

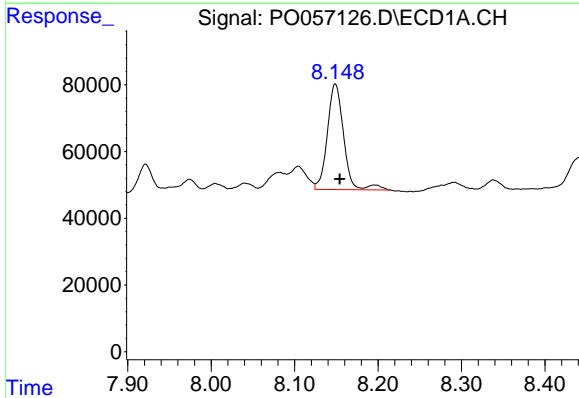
R.T.: 7.569 min
 Delta R.T.: -0.051 min
 Response: 562504
 Conc: 120.27 ng/ml

Instrument :
 ECD_O
 ClientSampleId :
 FESB-5(4.5-5)



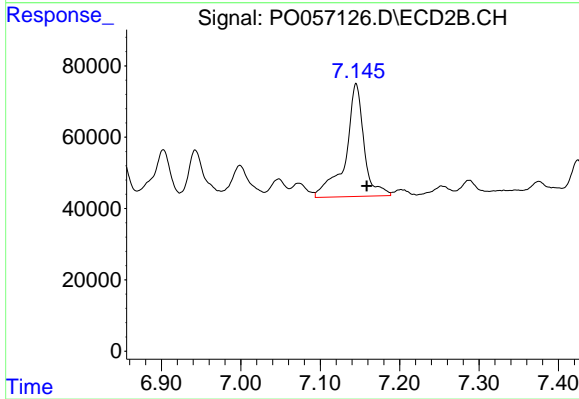
#36 AR-1262-1

R.T.: 6.644 min
 Delta R.T.: -0.016 min
 Response: 260802
 Conc: 62.48 ng/ml



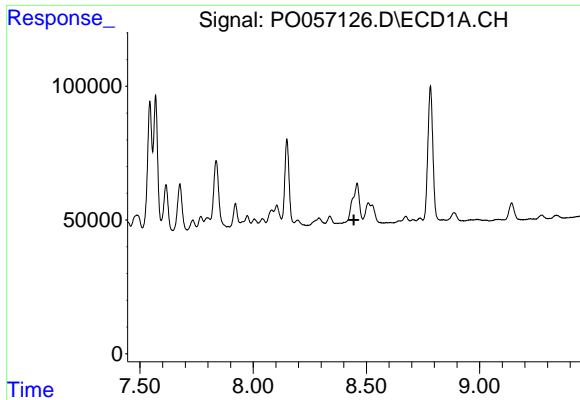
#37 AR-1262-2

R.T.: 8.149 min
 Delta R.T.: -0.005 min
 Response: 430918
 Conc: 56.52 ng/ml



#37 AR-1262-2

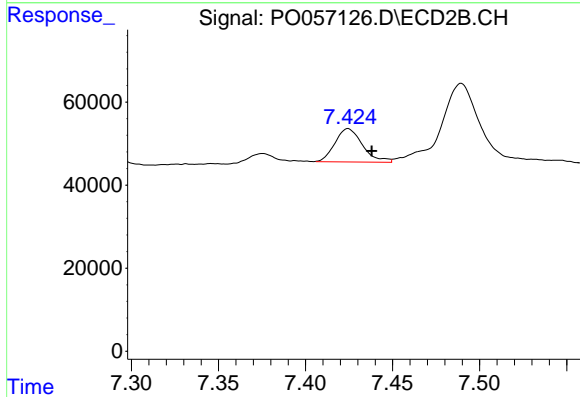
R.T.: 7.145 min
 Delta R.T.: -0.013 min
 Response: 508431
 Conc: 74.00 ng/ml



#38 AR-1262-3

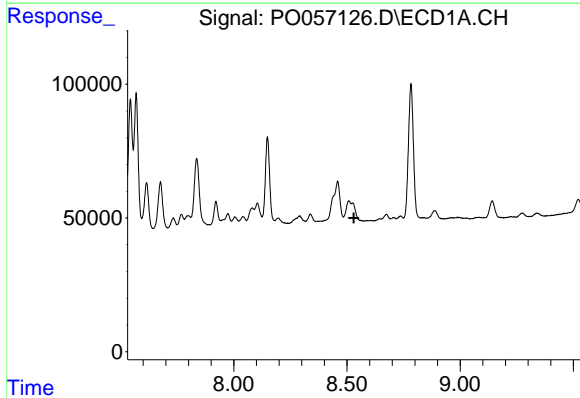
R.T.: 0.000 min
 Exp R.T. : 8.445 min
 Response: 0
 Conc: N.D.

Instrument :
 ECD_O
 ClientSampleId :
 FESB-5(4.5-5)



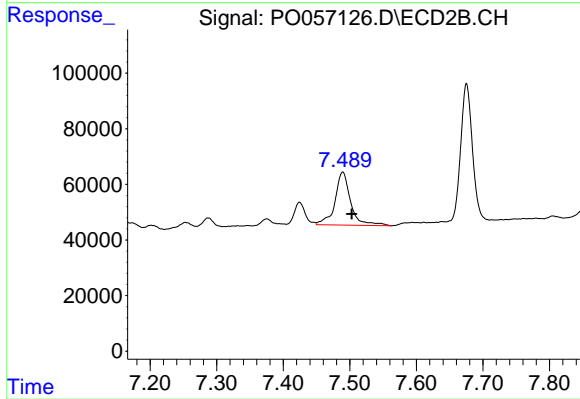
#38 AR-1262-3

R.T.: 7.424 min
 Delta R.T.: -0.014 min
 Response: 88221
 Conc: 29.87 ng/ml



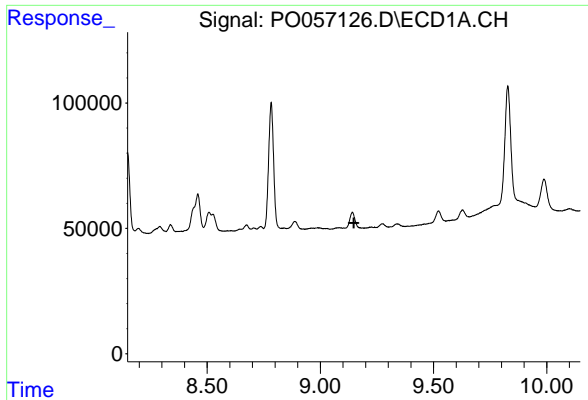
#39 AR-1262-4

R.T.: 0.000 min
 Exp R.T. : 8.530 min
 Response: 0
 Conc: N.D.



#39 AR-1262-4

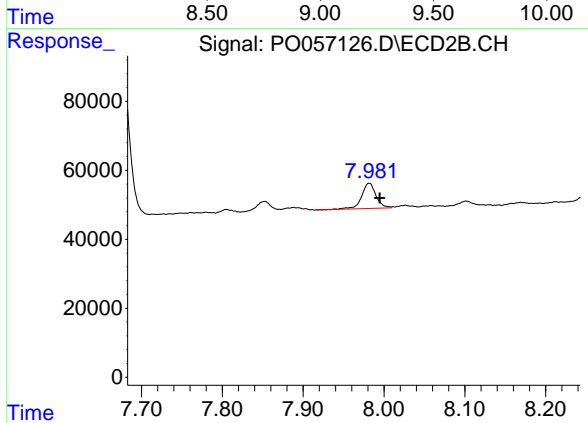
R.T.: 7.489 min
 Delta R.T.: -0.014 min
 Response: 312796
 Conc: 60.03 ng/ml



#40 AR-1262-5

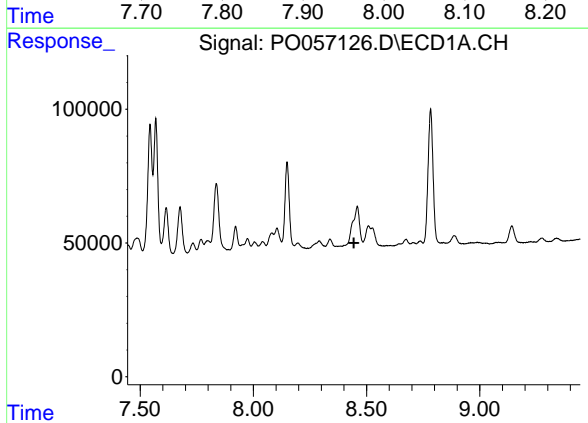
R.T.: 0.000 min
 Exp R.T.: 9.148 min
 Response: 0
 Conc: N.D.

Instrument :
 ECD_O
 ClientSampleId :
 FESB-5(4.5-5)



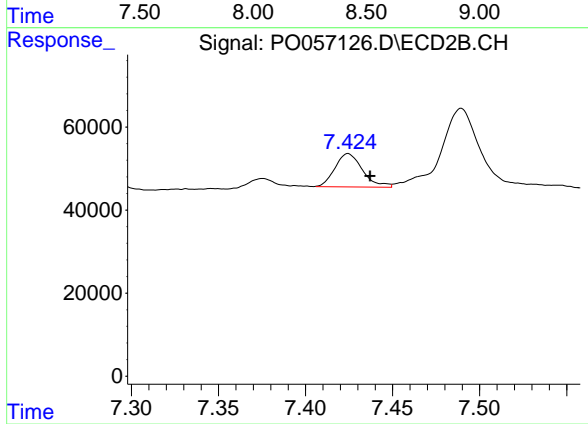
#40 AR-1262-5

R.T.: 7.982 min
 Delta R.T.: -0.013 min
 Response: 90220
 Conc: 38.85 ng/ml



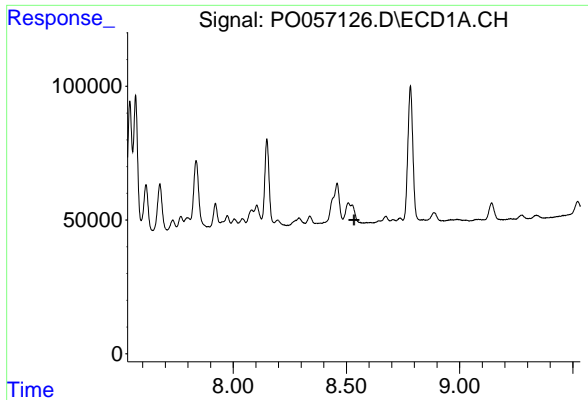
#41 AR-1268-1

R.T.: 0.000 min
 Exp R.T.: 8.444 min
 Response: 0
 Conc: N.D.



#41 AR-1268-1

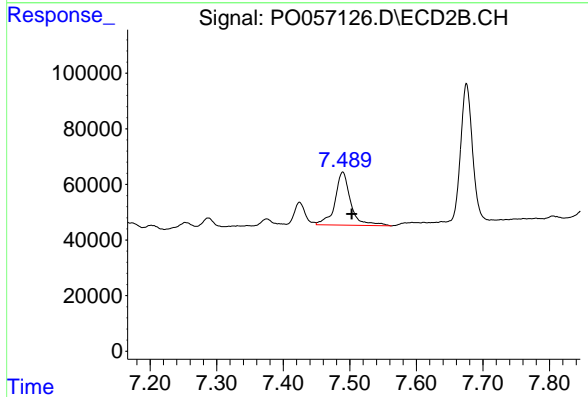
R.T.: 7.424 min
 Delta R.T.: -0.013 min
 Response: 88221
 Conc: 11.82 ng/ml



#42 AR-1268-2

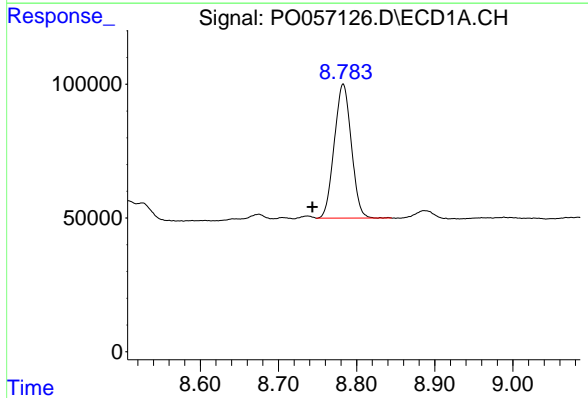
R.T.: 0.000 min
 Exp R.T.: 8.534 min
 Response: 0
 Conc: N.D.

Instrument :
 ECD_O
 ClientSampleId :
 FESB-5(4.5-5)



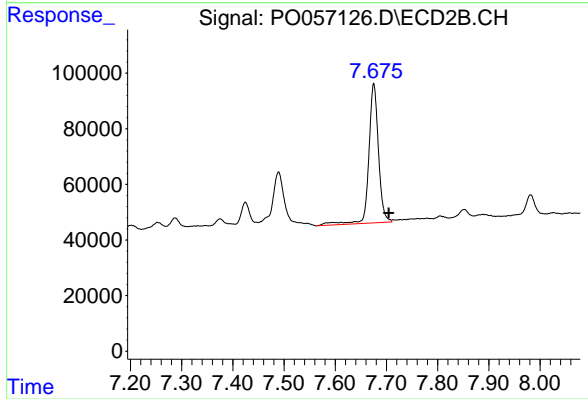
#42 AR-1268-2

R.T.: 7.489 min
 Delta R.T.: -0.013 min
 Response: 312796
 Conc: 44.79 ng/ml



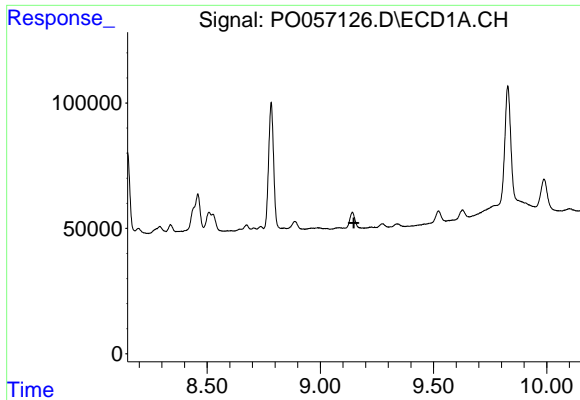
#43 AR-1268-3

R.T.: 8.783 min
 Delta R.T.: 0.039 min
 Response: 758725
 Conc: 115.15 ng/ml



#43 AR-1268-3

R.T.: 7.675 min
 Delta R.T.: -0.029 min
 Response: 657165
 Conc: 110.72 ng/ml

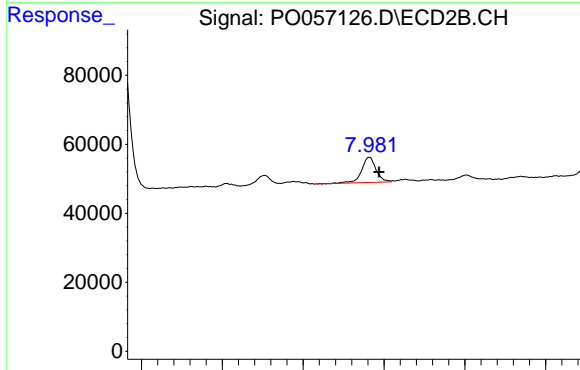


#44 AR-1268-4

R.T.: 0.000 min
 Exp R.T.: 9.148 min
 Response: 0
 Conc: N.D.

Instrument :
 ECD_O
 ClientSampleId :
 FESB-5(4.5-5)

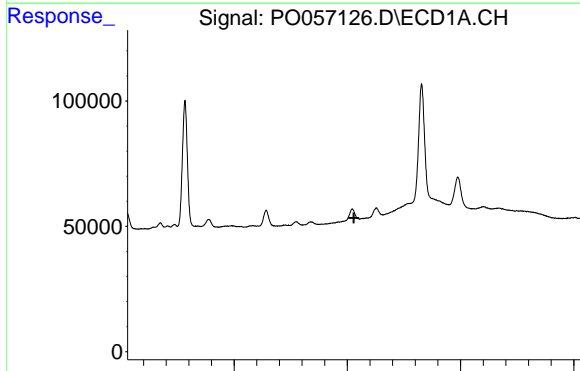
Time



#44 AR-1268-4

R.T.: 7.982 min
 Delta R.T.: -0.012 min
 Response: 90220
 Conc: 38.65 ng/ml

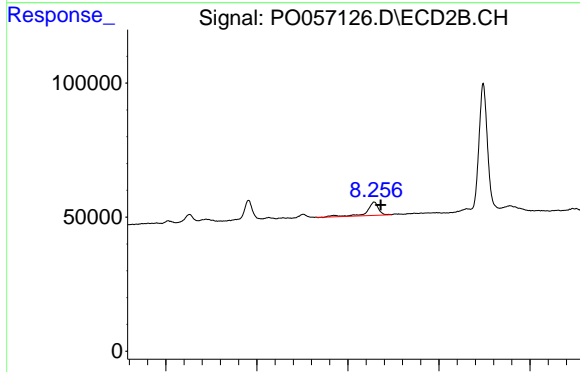
Time



#45 AR-1268-5

R.T.: 0.000 min
 Exp R.T.: 9.529 min
 Response: 0
 Conc: N.D.

Time



#45 AR-1268-5

R.T.: 8.258 min
 Delta R.T.: -0.014 min
 Response: 84432
 Conc: 4.88 ng/ml

Time