

Data Path : Z:\pestpcbsrv\HPCHEM1\ECD_0\Data\P0061319\
Data File : P0057118.D
Signal(s) : Signal #1: ECD1A.CH Signal #2: ECD2B.CH
Acq On : 13 Jun 2019 8:04
Operator : SM/SJ
Sample : HEXANE
Misc :
ALS Vial : 1 Sample Multiplier: 1

Instrument :
ECD_0
ClientSampleId :
HEXANE

Integration File signal 1: autoint1.e
Integration File signal 2: autoint2.e
Quant Time: Jun 14 03:40:44 2019
Quant Method : Z:\pestpcbsrv\HPCHEM1\ECD_0\methods\P0052319.M
Quant Title : GC EXTRACTABLES
QLast Update : Fri May 24 00:11:05 2019
Response via : Initial Calibration
Integrator: ChemStation 6890 Scale Mode: Small noise peaks clipped

Volume Inj. : 2 µl
Signal #1 Phase : ZB-MR1 Signal #2 Phase: ZB-MR2
Signal #1 Info : 30Mx0.32mmx 0.50µ Signal #2 Info : 30M x 0.32mm x 0.25µm

Compound	RT#1	RT#2	Resp#1	Resp#2	ng/ml	ng/ml
----------	------	------	--------	--------	-------	-------

System Monitoring Compounds

Target Compounds

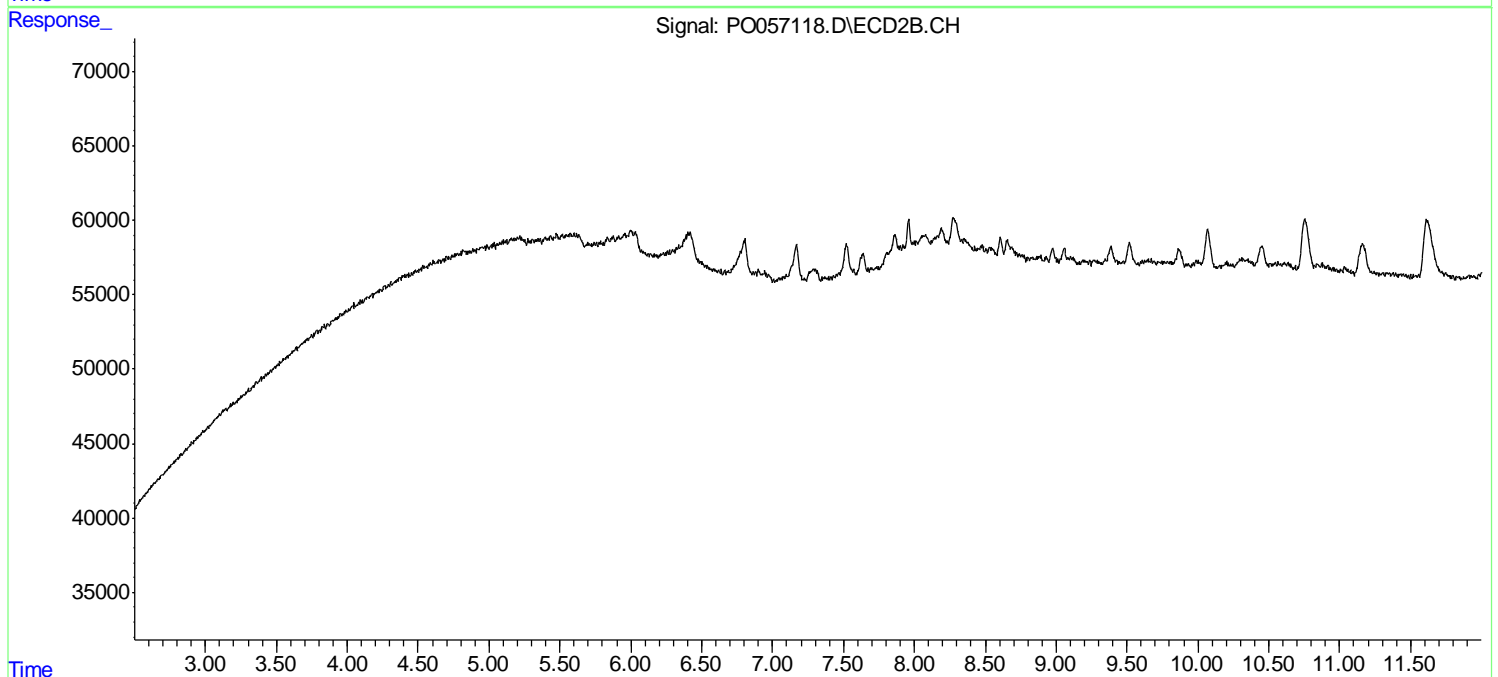
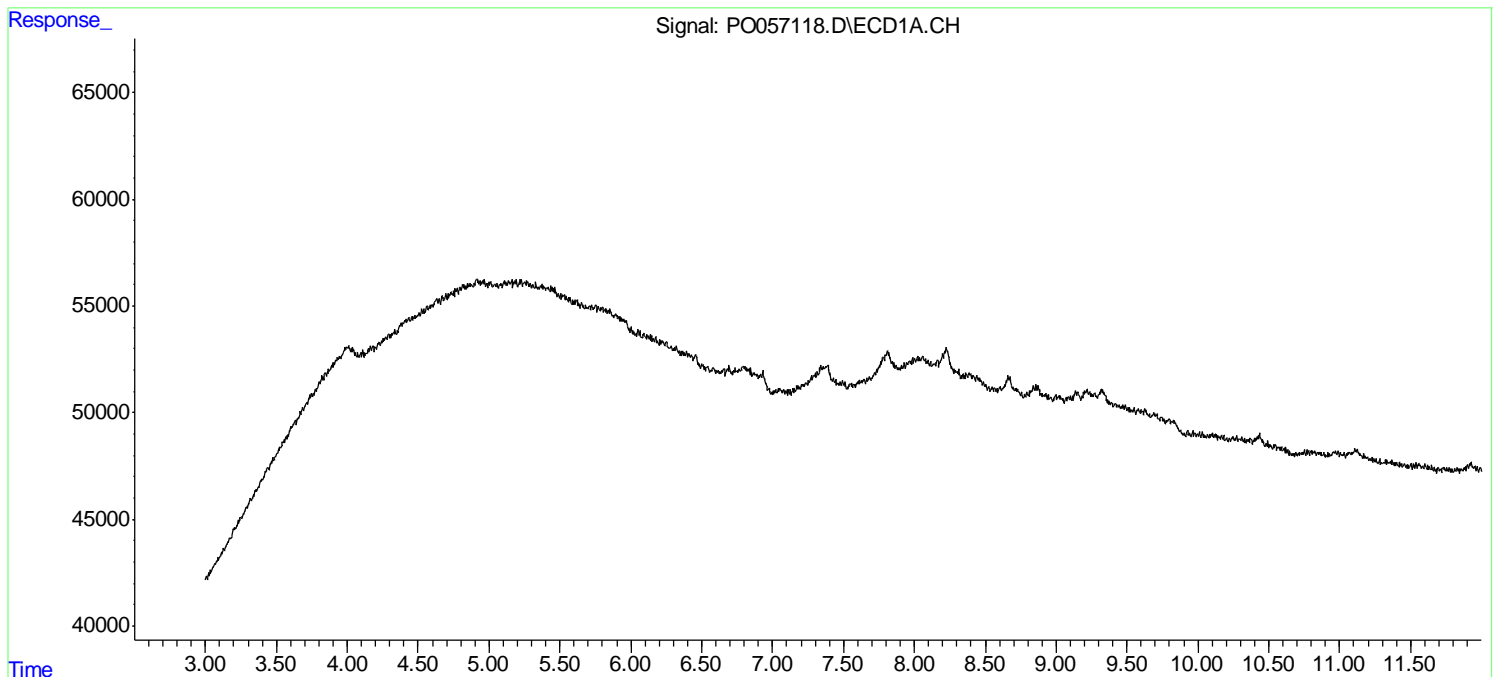
(f)=RT Delta > 1/2 Window (#)=Amounts differ by > 25% (m)=manual int.

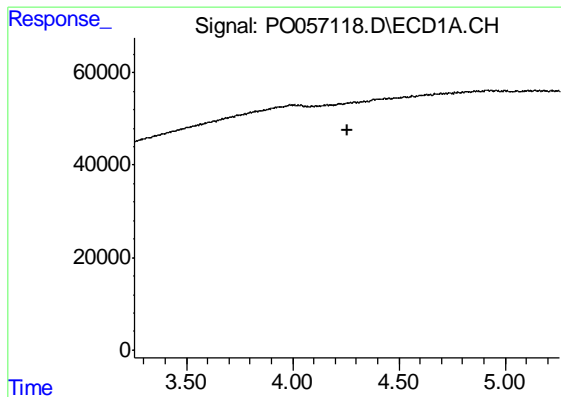
Data Path : Z:\pestpcbsrv\HPCHEM1\ECD_O\Data\P0061319\
Data File : P0057118.D
Signal(s) : Signal #1: ECD1A.CH Signal #2: ECD2B.CH
Acq On : 13 Jun 2019 8:04
Operator : SM/SJ
Sample : HEXANE
Misc :
ALS Vial : 1 Sample Multiplier: 1

Instrument :
ECD_O
ClientSampleId :
HEXANE

Integration File signal 1: autoint1.e
Integration File signal 2: autoint2.e
Quant Time: Jun 14 03:40:44 2019
Quant Method : Z:\pestpcbsrv\HPCHEM1\ECD_O\methods\P0052319.M
Quant Title : GC EXTRACTABLES
QLast Update : Fri May 24 00:11:05 2019
Response via : Initial Calibration
Integrator: ChemStation 6890 Scale Mode: Small noise peaks clipped

Volume Inj. : 2 μ l
Signal #1 Phase : ZB-MR1 Signal #2 Phase: ZB-MR2
Signal #1 Info : 30Mx0.32mmx 0.50 μ Signal #2 Info : 30M x 0.32mm x 0.25 μ m

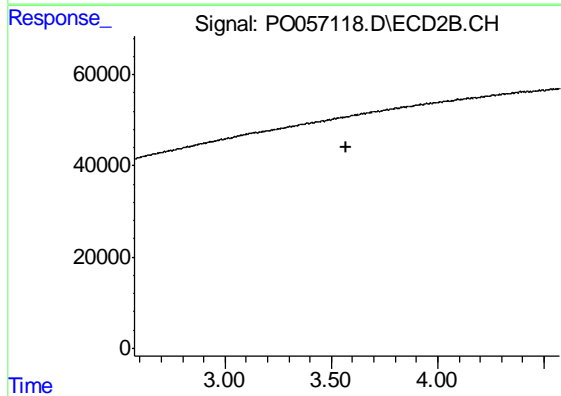




#1 Tetrachloro-m-xylene

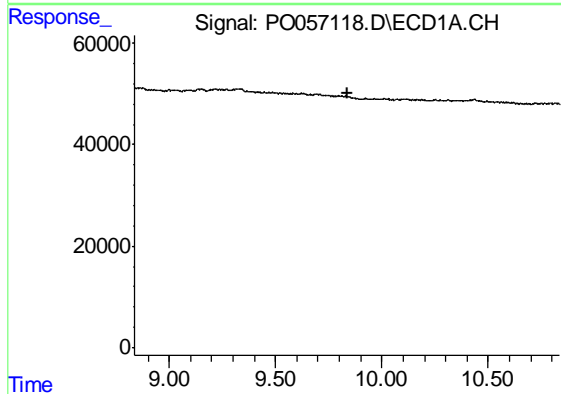
R.T.: 0.000 min
 Exp R.T. : 4.256 min
 Response: 0
 Conc: N.D.

Instrument :
 ECD_O
 ClientSampleId :
 HEXANE



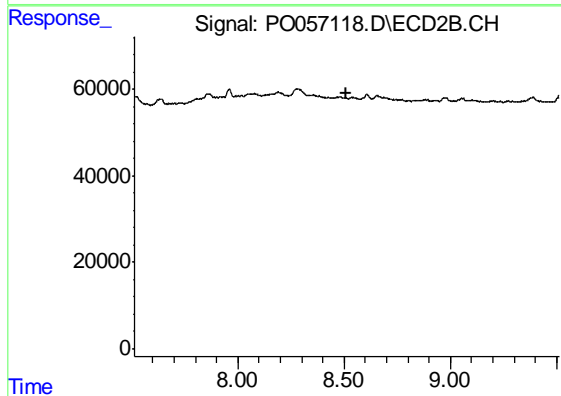
#1 Tetrachloro-m-xylene

R.T.: 0.000 min
 Exp R.T. : 3.573 min
 Response: 0
 Conc: N.D.



#2 Decachlorobiphenyl

R.T.: 0.000 min
 Exp R.T. : 9.836 min
 Response: 0
 Conc: N.D.



#2 Decachlorobiphenyl

R.T.: 0.000 min
 Exp R.T. : 8.513 min
 Response: 0
 Conc: N.D.