

Data Path : Z:\pestpcbsrv\HPCHEM1\ECD_0\Data\P0061319\
 Data File : P0057131.D
 Signal(s) : Signal #1: ECD1A.CH Signal #2: ECD2B.CH
 Acq On : 13 Jun 2019 17:36
 Operator : SM/SJ
 Sample : K3294-03
 Misc :
 ALS Vial : 9 Sample Multiplier: 1

Instrument :
 ECD_0
 ClientSampleId :
 S2(0-5)

Integration File signal 1: autoint1.e
 Integration File signal 2: autoint2.e
 Quant Time: Jun 14 03:45:03 2019
 Quant Method : Z:\pestpcbsrv\HPCHEM1\ECD_0\methods\P0052319.M
 Quant Title : GC EXTRACTABLES
 QLast Update : Fri May 24 00:11:05 2019
 Response via : Initial Calibration
 Integrator: ChemStation 6890 Scale Mode: Small noise peaks clipped

Volume Inj. : 2 µl
 Signal #1 Phase : ZB-MR1 Signal #2 Phase: ZB-MR2
 Signal #1 Info : 30Mx0.32mmx 0.50µ Signal #2 Info : 30M x 0.32mm x 0.25µm

Compound	RT#1	RT#2	Resp#1	Resp#2	ng/ml	ng/ml
----------	------	------	--------	--------	-------	-------

 System Monitoring Compounds

1) SA Tetrachlo...	4.242	3.562	799316	756658	20.879	22.944
2) SA Decachlor...	9.808	8.492	1284410	839599	26.168	23.547

Target Compounds

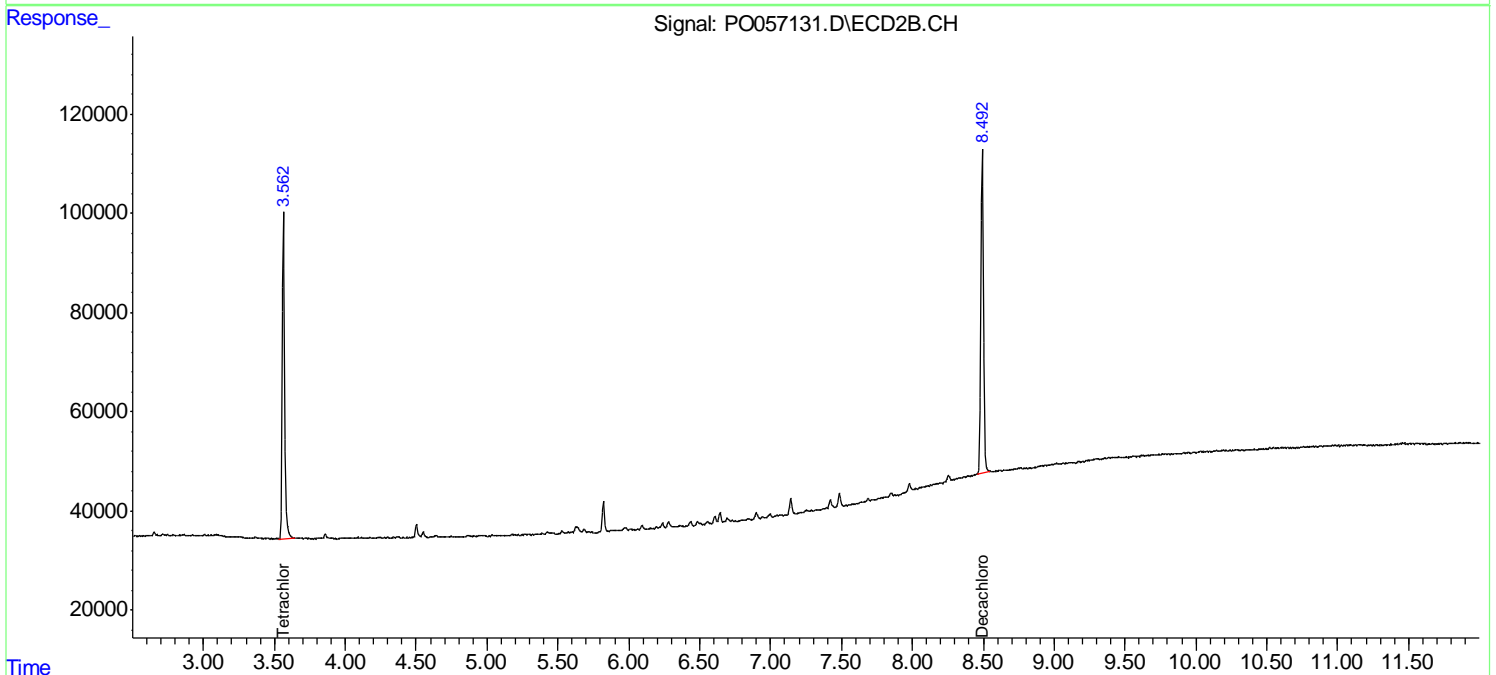
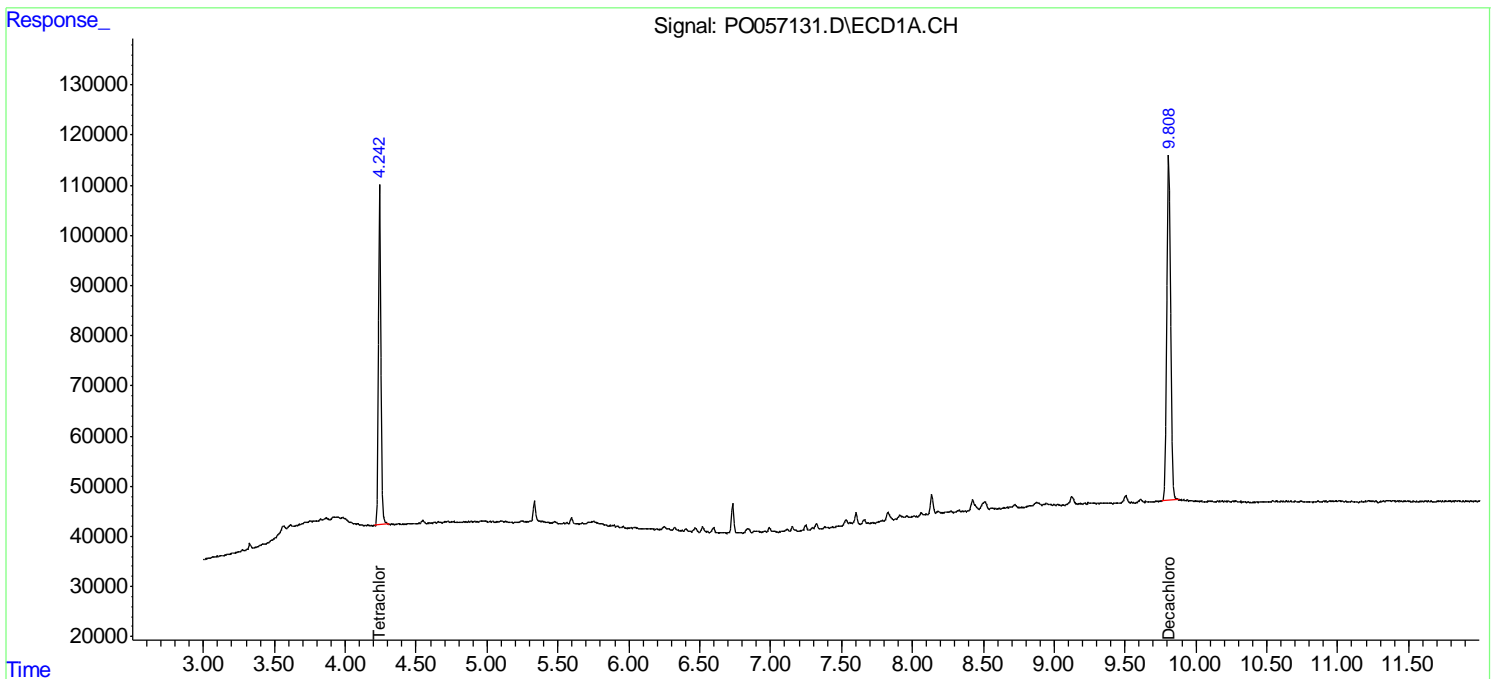
(f)=RT Delta > 1/2 Window (#)=Amounts differ by > 25% (m)=manual int.

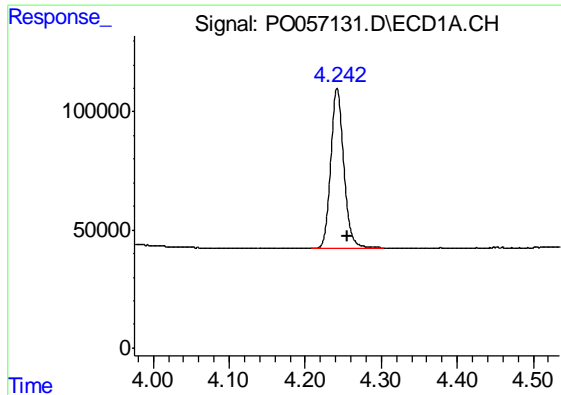
Data Path : Z:\pestpcbsrv\HPCHEM1\ECD_O\Data\P0061319\
 Data File : P0057131.D
 Signal(s) : Signal #1: ECD1A.CH Signal #2: ECD2B.CH
 Acq On : 13 Jun 2019 17:36
 Operator : SM/SJ
 Sample : K3294-03
 Misc :
 ALS Vial : 9 Sample Multiplier: 1

Instrument :
 ECD_O
 ClientSampleId :
 S2(0-5)

Integration File signal 1: autoint1.e
 Integration File signal 2: autoint2.e
 Quant Time: Jun 14 03:45:03 2019
 Quant Method : Z:\pestpcbsrv\HPCHEM1\ECD_O\methods\P0052319.M
 Quant Title : GC EXTRACTABLES
 QLast Update : Fri May 24 00:11:05 2019
 Response via : Initial Calibration
 Integrator: ChemStation 6890 Scale Mode: Small noise peaks clipped

Volume Inj. : 2 µl
 Signal #1 Phase : ZB-MR1 Signal #2 Phase: ZB-MR2
 Signal #1 Info : 30Mx0.32mmx 0.50µ Signal #2 Info : 30M x 0.32mm x 0.25µm

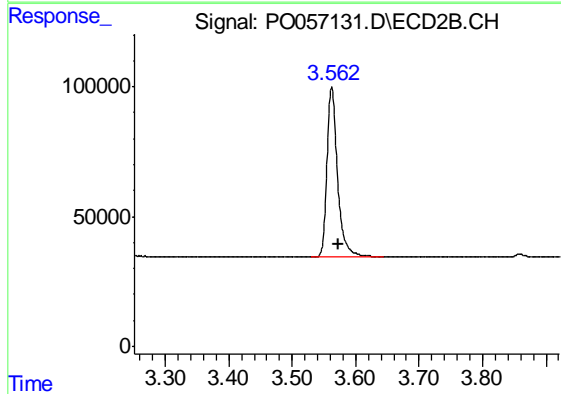




#1 Tetrachloro-m-xylene

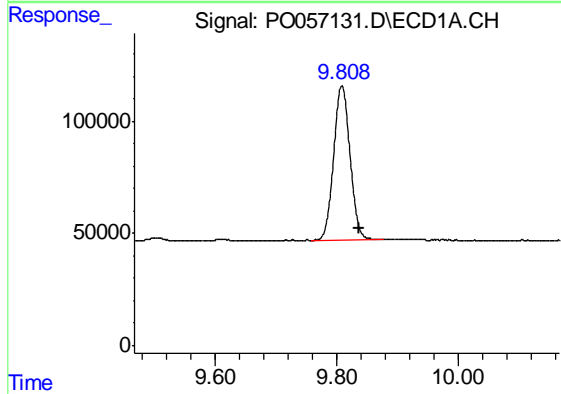
R.T.: 4.242 min
 Delta R.T.: -0.014 min
 Response: 799316
 Conc: 20.88 ng/ml

Instrument :
 ECD_O
 ClientSampleId :
 S2(0-5)



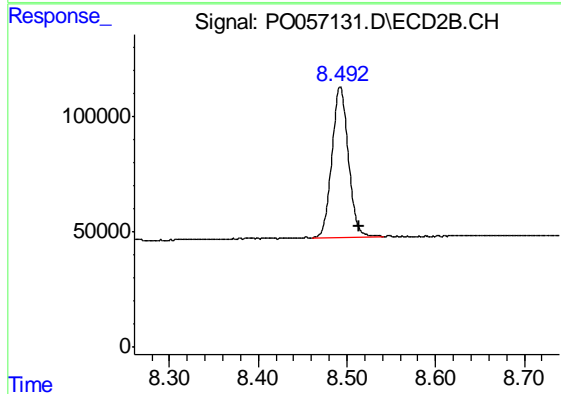
#1 Tetrachloro-m-xylene

R.T.: 3.562 min
 Delta R.T.: -0.011 min
 Response: 756658
 Conc: 22.94 ng/ml



#2 Decachlorobiphenyl

R.T.: 9.808 min
 Delta R.T.: -0.028 min
 Response: 1284410
 Conc: 26.17 ng/ml



#2 Decachlorobiphenyl

R.T.: 8.492 min
 Delta R.T.: -0.021 min
 Response: 839599
 Conc: 23.55 ng/ml