

Data Path : Z:\pestpcbsrv\HPCHEM1\ECD\_0\Data\P0061419\  
 Data File : P0057178.D  
 Signal(s) : Signal #1: ECD1A.CH Signal #2: ECD2B.CH  
 Acq On : 14 Jun 2019 18:32  
 Operator : SM/SJ  
 Sample : AR1660CCC500  
 Misc :  
 ALS Vial : 3 Sample Multiplier: 1

Instrument :  
 ECD\_0  
 ClientSampled :  
 AR1660CCC500

Integration File signal 1: autoint1.e  
 Integration File signal 2: autoint2.e  
 Quant Time: Jun 14 23:34:59 2019  
 Quant Method : Z:\pestpcbsrv\HPCHEM1\ECD\_0\methods\P0052319.M  
 Quant Title : GC EXTRACTABLES  
 QLast Update : Fri May 24 00:11:05 2019  
 Response via : Initial Calibration  
 Integrator: ChemStation 6890 Scale Mode: Small noise peaks clipped

Volume Inj. : 2 µl  
 Signal #1 Phase : ZB-MR1 Signal #2 Phase: ZB-MR2  
 Signal #1 Info : 30Mx0.32mmx 0.50µ Signal #2 Info : 30M x 0.32mm x 0.25µm

Compound	RT#1	RT#2	Resp#1	Resp#2	ng/ml	ng/ml
System Monitoring Compounds						
1) SA Tetrachlo...	4.240	3.562	1599648	1567916	41.784	47.544
2) SA Decachlor...	9.802	8.491	2537472	1777963	51.697	49.863
Target Compounds						
3) L1 AR-1016-1	5.422	4.648	1794352	820547	997.627	652.011 #
4) L1 AR-1016-2	5.422	4.648	1794352	820547	714.576	455.449 #
5) L1 AR-1016-3	5.483	4.821	683745	452015	425.401	458.459
6) L1 AR-1016-4	5.581	4.862	556232	378543	424.022	457.265
7) L1 AR-1016-5	5.872	5.073	592377	207285	428.759	193.232 #
8) L2 AR-1221-1	0.000	3.770	0	45999	N.D.	90.700 #
9) L2 AR-1221-2	4.614	3.857	318862	69923	668.338	185.536 #
10) L2 AR-1221-3	4.614	3.931	318862	270833	215.729	226.250
11) L3 AR-1232-1	4.614	3.931	318862	270833	270.593	301.473
12) L3 AR-1232-2	5.135	4.648	492308	820547	742.501	844.290
13) L3 AR-1232-3	5.422	4.821	1794352	452015	1264.831	863.791 #
14) L3 AR-1232-4	5.581	4.904	556232	456935	790.183	927.433
15) L3 AR-1232-5	5.670	5.073	474398	207285	839.065	368.012 #
16) L4 AR-1242-1	5.422	4.648	1794352	820547	1040.088	662.489 #
17) L4 AR-1242-2	5.422	4.648	1794352	820547	706.779	456.259 #
18) L4 AR-1242-3	5.483	4.821	683745	452015	420.503	459.783
19) L4 AR-1242-4	5.581	4.904	556232	456935	416.115	469.567
20) L4 AR-1242-5	0.000	5.420	0	383584	N.D.	324.446 #
21) L5 AR-1248-1	5.422	4.648	1794352	820547	1392.575	876.168 #
22) L5 AR-1248-2	5.670	4.862	474398	378543	254.656	297.960
23) L5 AR-1248-3	5.872	4.904	592377	456935	288.774	349.900
24) L5 AR-1248-4	0.000	5.073	0	207285	N.D.	130.892 #
25) L5 AR-1248-5	0.000	5.461	0	65373	N.D.	39.498 #
26) L6 AR-1254-1	0.000	5.420	0	383584	N.D.	145.037 #
27) L6 AR-1254-2	6.461	5.566	493943	309423	127.171	143.530
28) L6 AR-1254-3	6.882	5.979	848430	706376	205.760	192.943
29) L6 AR-1254-4	0.000	6.221	0	225307	N.D.	102.555 #
30) L6 AR-1254-5	7.526	6.605	1950421	1225972	517.952	386.713 #
31) L7 AR-1260-1	6.987	6.093	1252862	954215	488.221	477.016
32) L7 AR-1260-2	7.243	6.281	1524258	1218870	504.026	494.478
33) L7 AR-1260-3	7.599	6.433	1291860	1098303	536.253	489.608
34) L7 AR-1260-4	7.824	6.899	1329959	948906	507.771	509.885
35) L7 AR-1260-5	8.132	7.141	2507781	2251511	524.412	522.110
36) L8 AR-1262-1	7.599	6.641	1291860	1174426	276.219	281.363
37) L8 AR-1262-2	8.132	7.141	2507781	2251511	328.941	327.701
38) L8 AR-1262-3	8.440	7.420	1668578	579242	318.823	196.125 #
39) L8 AR-1262-4	8.490	7.484	1157301	1654554	271.088	317.536
40) L8 AR-1262-5	9.120	7.976	768437	572257	279.670	246.435
41) L9 AR-1268-1	8.440	7.420	1668578	579242	205.048	77.593 #

Data Path : Z:\pestpcbsrv\HPCHEM1\ECD\_0\Data\P0061419\  
 Data File : P0057178.D  
 Signal(s) : Signal #1: ECD1A.CH Signal #2: ECD2B.CH  
 Acq On : 14 Jun 2019 18:32  
 Operator : SM/SJ  
 Sample : AR1660CCC500  
 Misc :  
 ALS Vial : 3 Sample Multiplier: 1

Instrument :  
 ECD\_0  
 ClientSampleId :  
 AR1660CCC500

Integration File signal 1: autoint1.e  
 Integration File signal 2: autoint2.e  
 Quant Time: Jun 14 23:34:59 2019  
 Quant Method : Z:\pestpcbsrv\HPCHEM1\ECD\_0\methods\P0052319.M  
 Quant Title : GC EXTRACTABLES  
 QLast Update : Fri May 24 00:11:05 2019  
 Response via : Initial Calibration  
 Integrator: ChemStation 6890 Scale Mode: Small noise peaks clipped

Volume Inj. : 2 µl  
 Signal #1 Phase : ZB-MR1 Signal #2 Phase: ZB-MR2  
 Signal #1 Info : 30Mx0.32mmx 0.50µ Signal #2 Info : 30M x 0.32mm x 0.25µm

	Compound	RT#1	RT#2	Resp#1	Resp#2	ng/ml	ng/ml
42)	L9 AR-1268-2	8.490	7.484	1157301	1654554	143.056	236.938 #
43)	L9 AR-1268-3	0.000	7.686	0	33654	N.D.	5.670 #
44)	L9 AR-1268-4	9.120	7.976	768437	572257	281.781	245.157
45)	L9 AR-1268-5	0.000	8.252	0	150393	N.D.	8.690 #

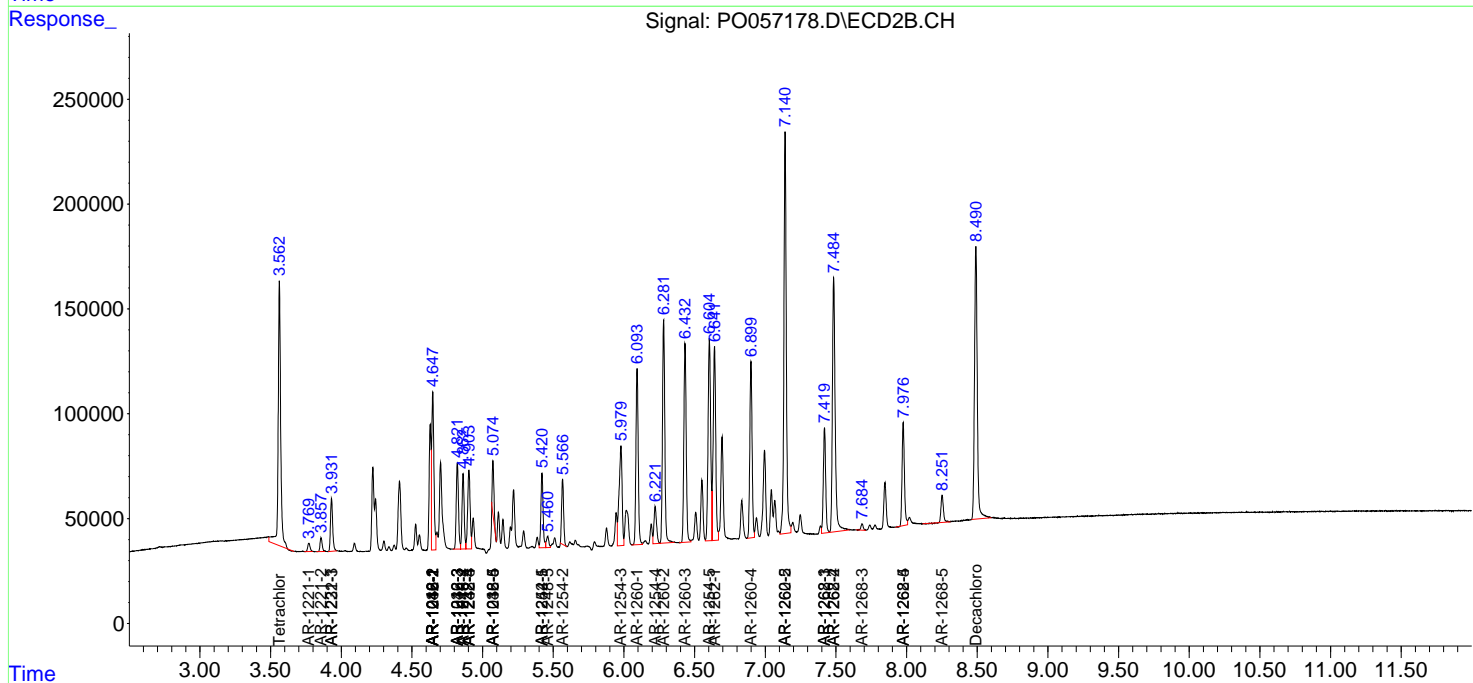
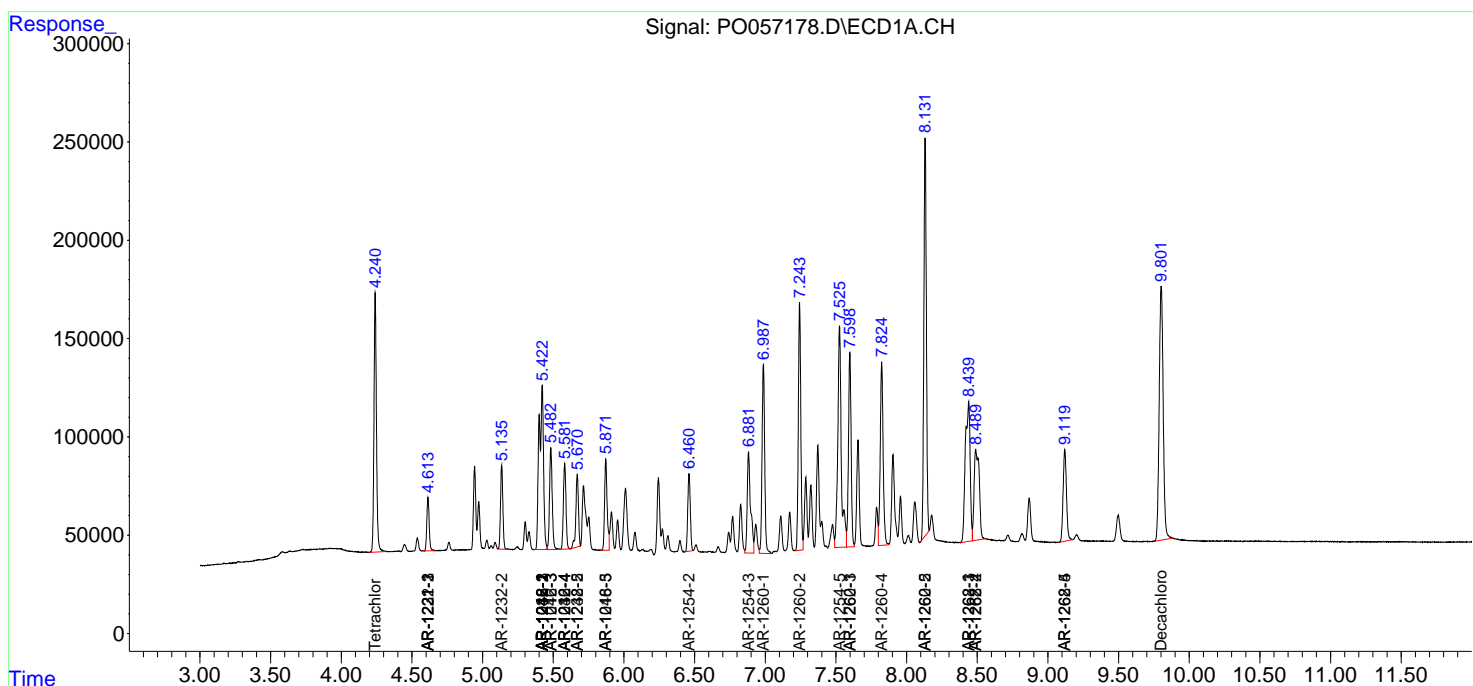
(f)=RT Delta > 1/2 Window (#)=Amounts differ by > 25% (m)=manual int.

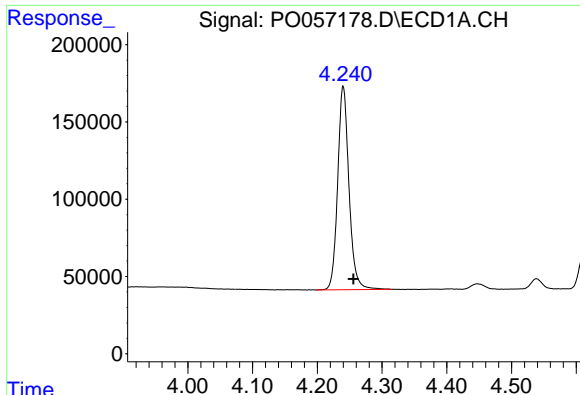
Data Path : Z:\pestpcbsrv\HPCHEM1\ECD\_O\Data\P0061419\  
 Data File : P0057178.D  
 Signal(s) : Signal #1: ECD1A.CH Signal #2: ECD2B.CH  
 Acq On : 14 Jun 2019 18:32  
 Operator : SM/SJ  
 Sample : AR1660CCC500  
 Misc :  
 ALS Vial : 3 Sample Multiplier: 1

Instrument :  
 ECD\_O  
 ClientSampled :  
 AR1660CCC500

Integration File signal 1: autoint1.e  
 Integration File signal 2: autoint2.e  
 Quant Time: Jun 14 23:34:59 2019  
 Quant Method : Z:\pestpcbsrv\HPCHEM1\ECD\_O\methods\P0052319.M  
 Quant Title : GC EXTRACTABLES  
 QLast Update : Fri May 24 00:11:05 2019  
 Response via : Initial Calibration  
 Integrator: ChemStation 6890 Scale Mode: Small noise peaks clipped

Volume Inj. : 2 µl  
 Signal #1 Phase : ZB-MR1 Signal #2 Phase: ZB-MR2  
 Signal #1 Info : 30Mx0.32mmx 0.50µ Signal #2 Info : 30M x 0.32mm x 0.25µm

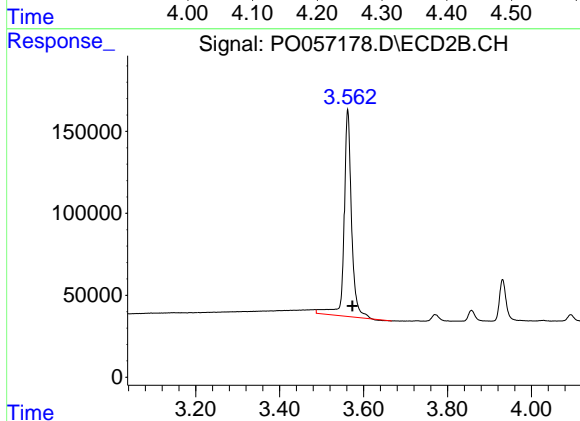




#1 Tetrachloro-m-xylene

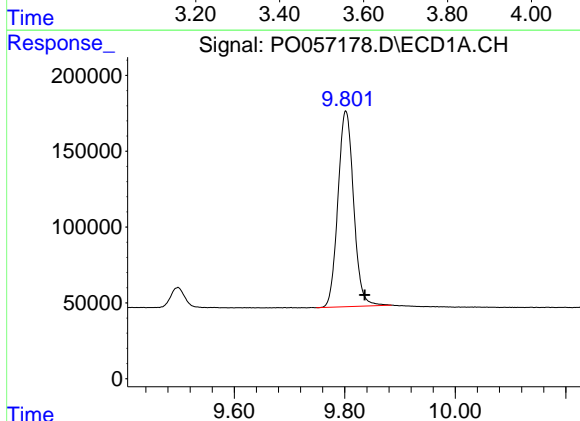
R.T.: 4.240 min  
 Delta R.T.: -0.016 min  
 Response: 1599648  
 Conc: 41.78 ng/ml

Instrument :  
 ECD\_O  
 ClientSampleId :  
 AR1660CCC500



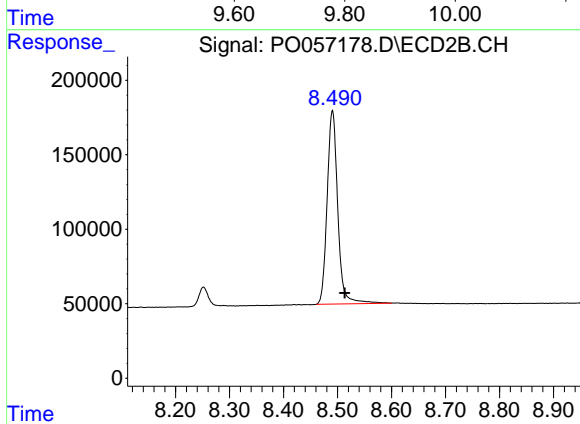
#1 Tetrachloro-m-xylene

R.T.: 3.562 min  
 Delta R.T.: -0.011 min  
 Response: 1567916  
 Conc: 47.54 ng/ml



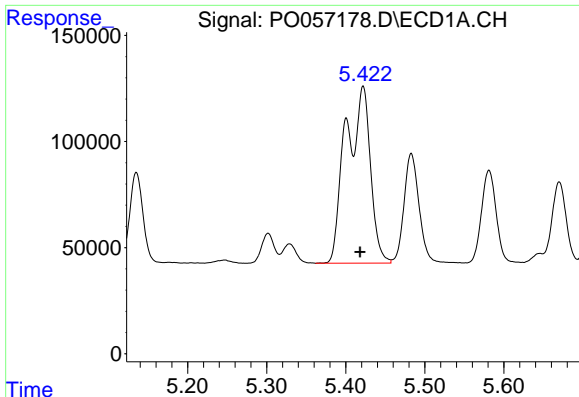
#2 Decachlorobiphenyl

R.T.: 9.802 min  
 Delta R.T.: -0.034 min  
 Response: 2537472  
 Conc: 51.70 ng/ml



#2 Decachlorobiphenyl

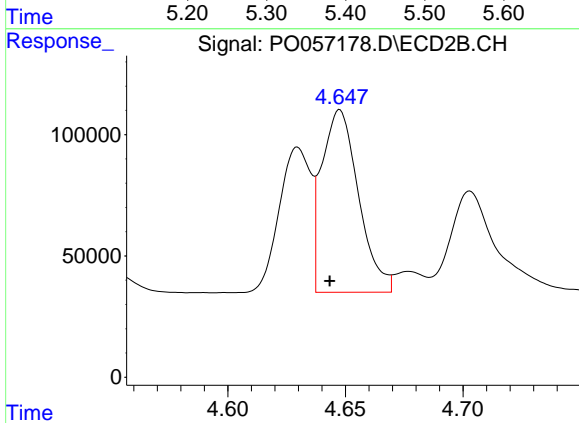
R.T.: 8.491 min  
 Delta R.T.: -0.022 min  
 Response: 1777963  
 Conc: 49.86 ng/ml



#3 AR-1016-1

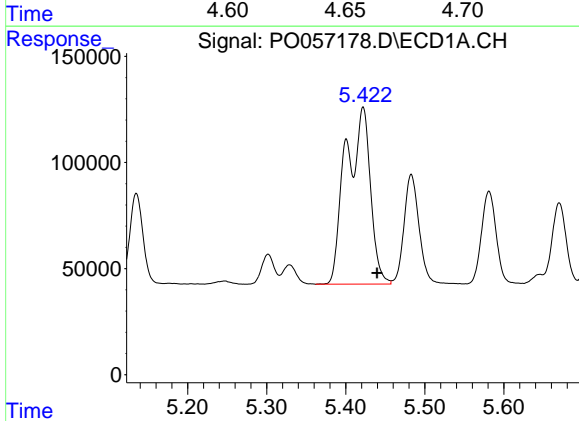
R.T.: 5.422 min  
 Delta R.T.: 0.004 min  
 Response: 1794352  
 Conc: 997.63 ng/ml

Instrument :  
 ECD\_O  
 ClientSampleId :  
 AR1660CCC500



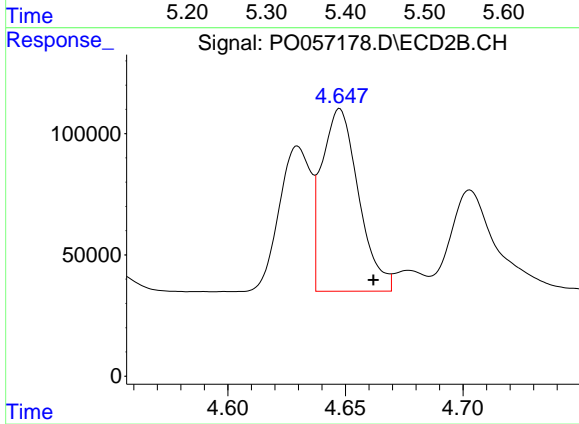
#3 AR-1016-1

R.T.: 4.648 min  
 Delta R.T.: 0.004 min  
 Response: 820547  
 Conc: 652.01 ng/ml



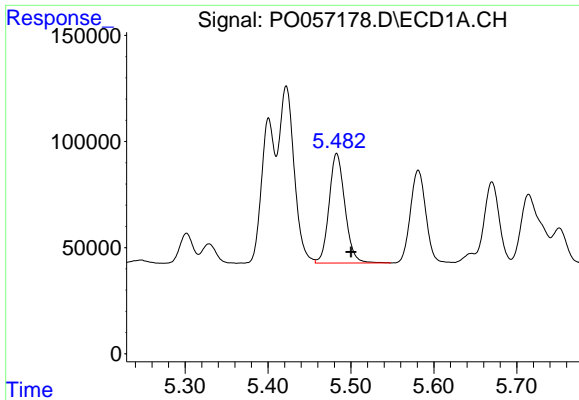
#4 AR-1016-2

R.T.: 5.422 min  
 Delta R.T.: -0.018 min  
 Response: 1794352  
 Conc: 714.58 ng/ml



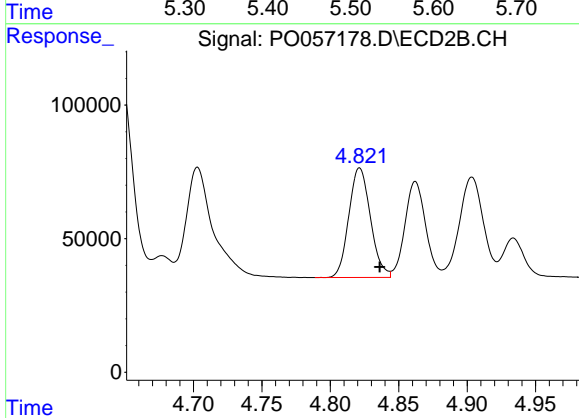
#4 AR-1016-2

R.T.: 4.648 min  
 Delta R.T.: -0.014 min  
 Response: 820547  
 Conc: 455.45 ng/ml

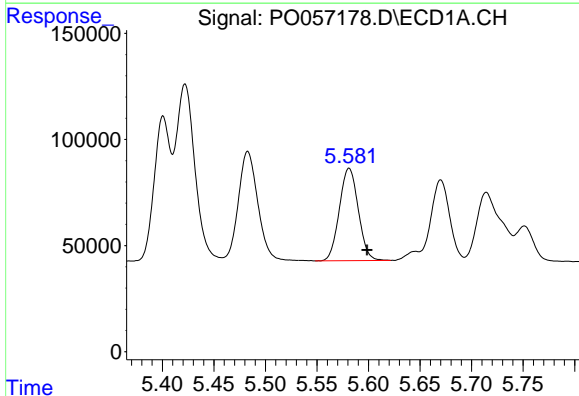


#5 AR-1016-3  
 R.T.: 5.483 min  
 Delta R.T.: -0.017 min  
 Response: 683745  
 Conc: 425.40 ng/ml

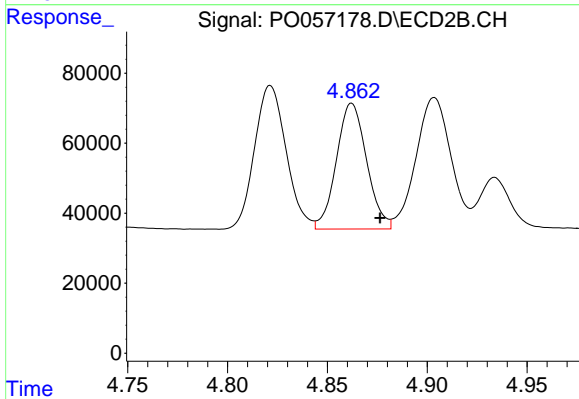
Instrument :  
 ECD\_O  
 ClientSampleId :  
 AR1660CCC500



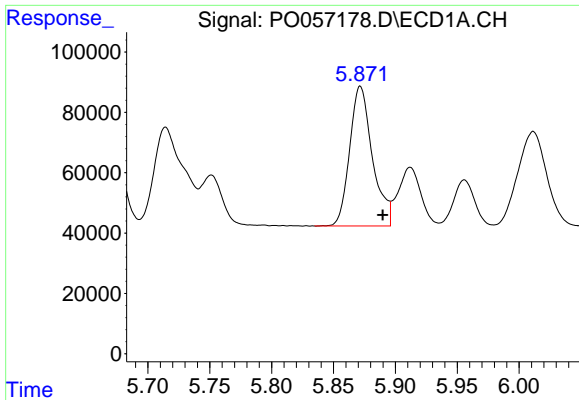
#5 AR-1016-3  
 R.T.: 4.821 min  
 Delta R.T.: -0.015 min  
 Response: 452015  
 Conc: 458.46 ng/ml



#6 AR-1016-4  
 R.T.: 5.581 min  
 Delta R.T.: -0.017 min  
 Response: 556232  
 Conc: 424.02 ng/ml



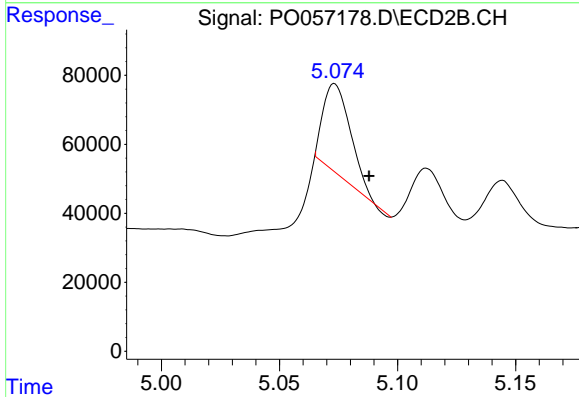
#6 AR-1016-4  
 R.T.: 4.862 min  
 Delta R.T.: -0.014 min  
 Response: 378543  
 Conc: 457.26 ng/ml



#7 AR-1016-5

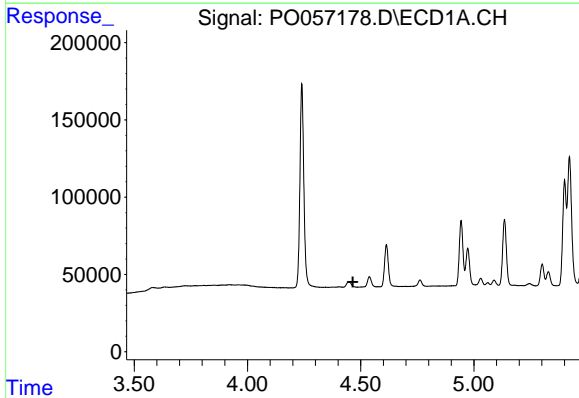
R.T.: 5.872 min  
 Delta R.T.: -0.018 min  
 Response: 592377  
 Conc: 428.76 ng/ml

Instrument :  
 ECD\_O  
 ClientSampleId :  
 AR1660CCC500



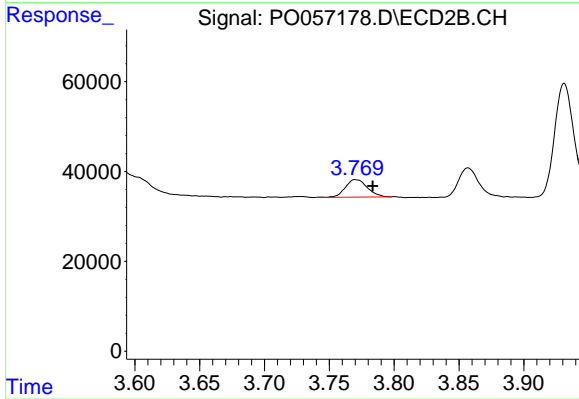
#7 AR-1016-5

R.T.: 5.073 min  
 Delta R.T.: -0.015 min  
 Response: 207285  
 Conc: 193.23 ng/ml



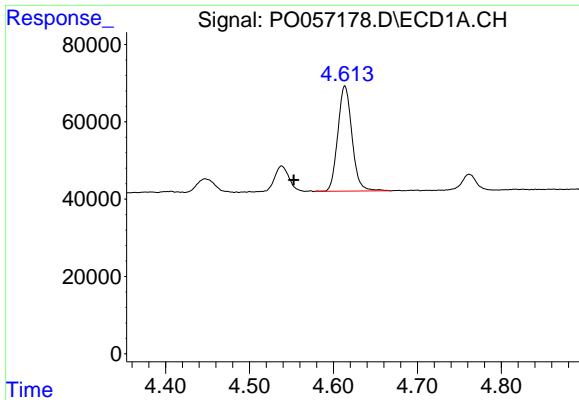
#8 AR-1221-1

R.T.: 0.000 min  
 Exp R.T. : 4.466 min  
 Response: 0  
 Conc: N.D.



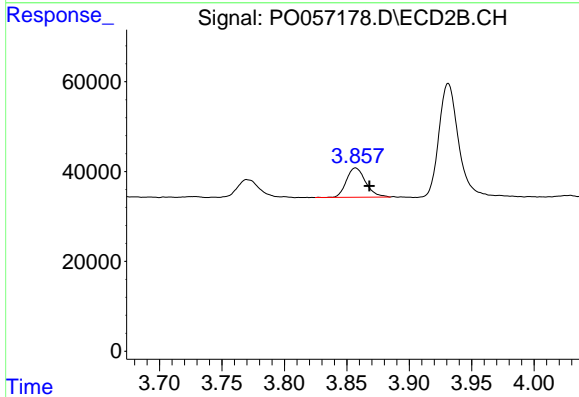
#8 AR-1221-1

R.T.: 3.770 min  
 Delta R.T.: -0.014 min  
 Response: 45999  
 Conc: 90.70 ng/ml

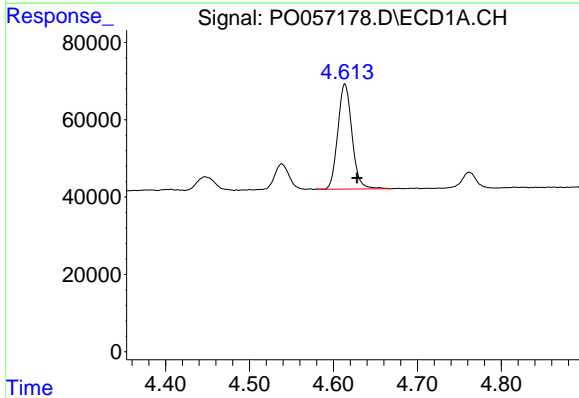


#9 AR-1221-2  
 R.T.: 4.614 min  
 Delta R.T.: 0.061 min  
 Response: 318862  
 Conc: 668.34 ng/ml

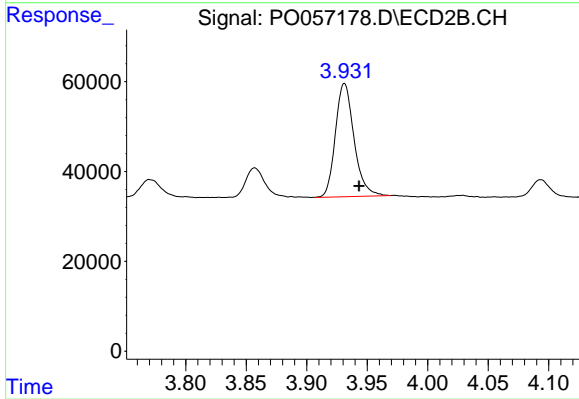
Instrument :  
 ECD\_O  
 ClientSampleId :  
 AR1660CCC500



#9 AR-1221-2  
 R.T.: 3.857 min  
 Delta R.T.: -0.011 min  
 Response: 69923  
 Conc: 185.54 ng/ml

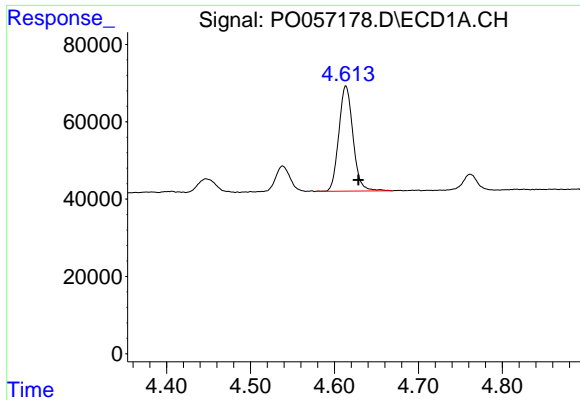


#10 AR-1221-3  
 R.T.: 4.614 min  
 Delta R.T.: -0.015 min  
 Response: 318862  
 Conc: 215.73 ng/ml



#10 AR-1221-3  
 R.T.: 3.931 min  
 Delta R.T.: -0.012 min  
 Response: 270833  
 Conc: 226.25 ng/ml

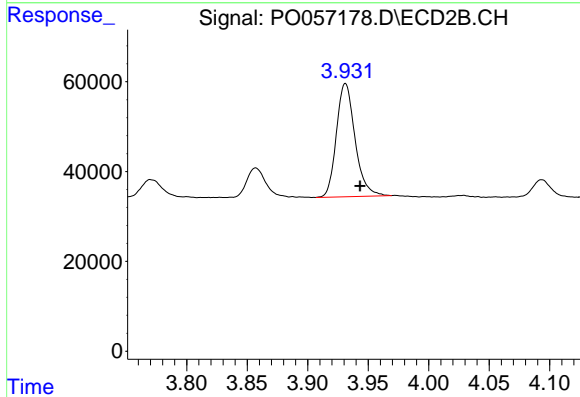




#11 AR-1232-1

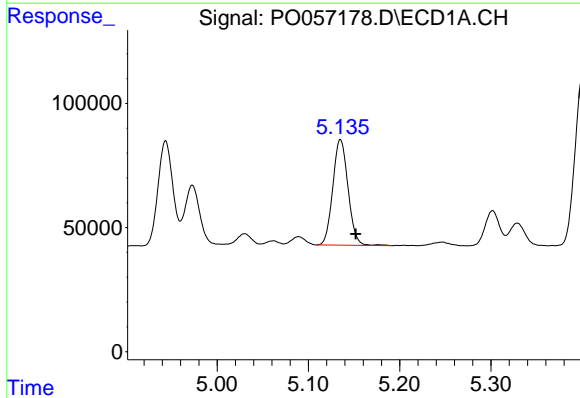
R.T.: 4.614 min  
 Delta R.T.: -0.015 min  
 Response: 318862  
 Conc: 270.59 ng/ml

Instrument :  
 ECD\_O  
 ClientSampled :  
 AR1660CCC500



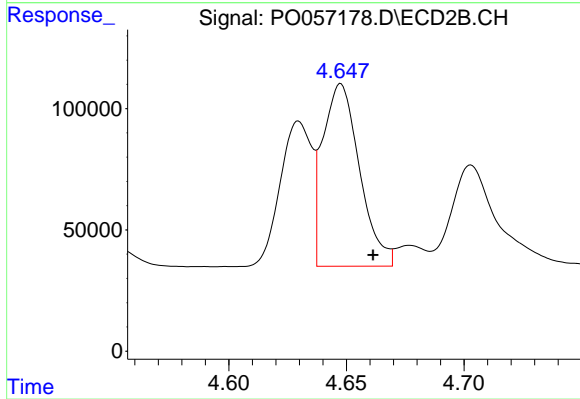
#11 AR-1232-1

R.T.: 3.931 min  
 Delta R.T.: -0.012 min  
 Response: 270833  
 Conc: 301.47 ng/ml



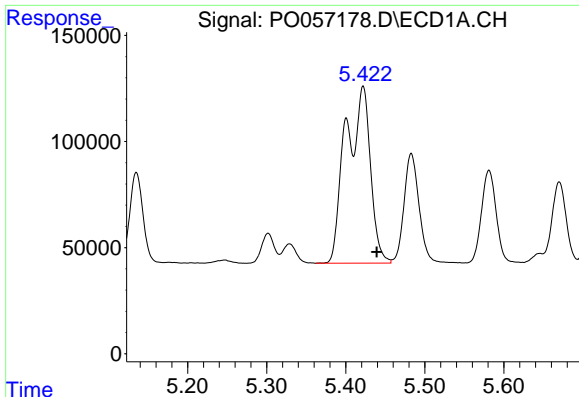
#12 AR-1232-2

R.T.: 5.135 min  
 Delta R.T.: -0.017 min  
 Response: 492308  
 Conc: 742.50 ng/ml



#12 AR-1232-2

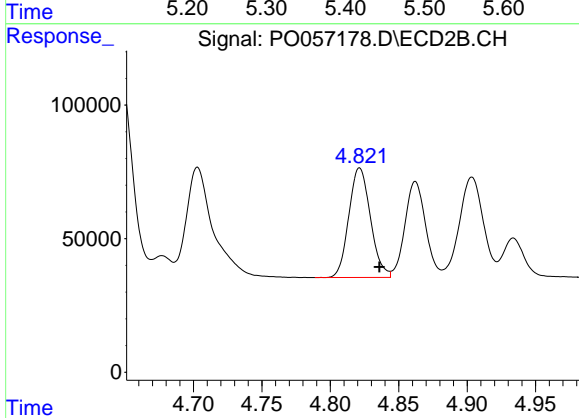
R.T.: 4.648 min  
 Delta R.T.: -0.014 min  
 Response: 820547  
 Conc: 844.29 ng/ml



#13 AR-1232-3

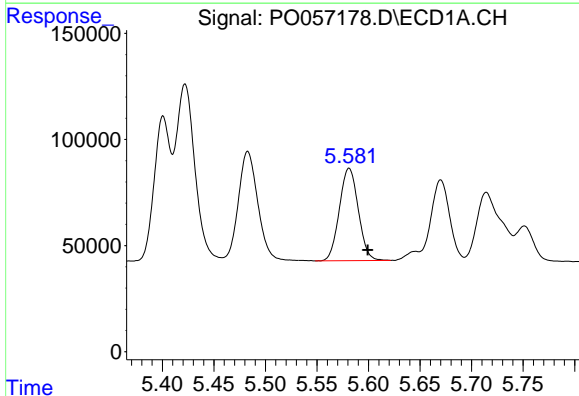
R.T.: 5.422 min  
 Delta R.T.: -0.017 min  
 Response: 1794352  
 Conc: 1264.83 ng/ml

Instrument :  
 ECD\_O  
 ClientSampleId :  
 AR1660CCC500



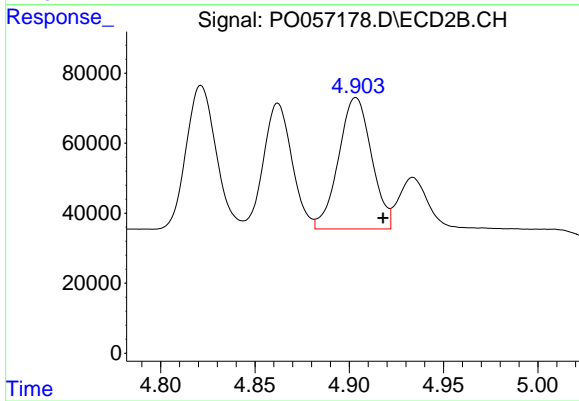
#13 AR-1232-3

R.T.: 4.821 min  
 Delta R.T.: -0.014 min  
 Response: 452015  
 Conc: 863.79 ng/ml



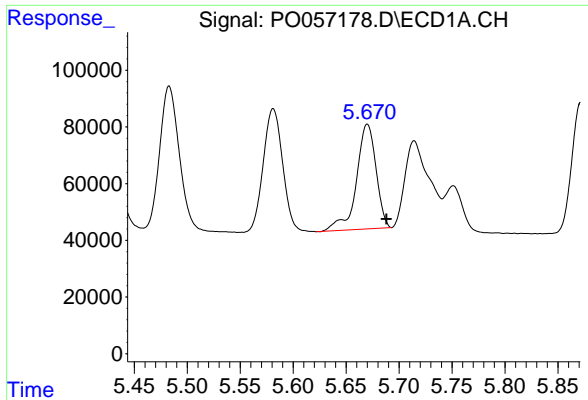
#14 AR-1232-4

R.T.: 5.581 min  
 Delta R.T.: -0.018 min  
 Response: 556232  
 Conc: 790.18 ng/ml



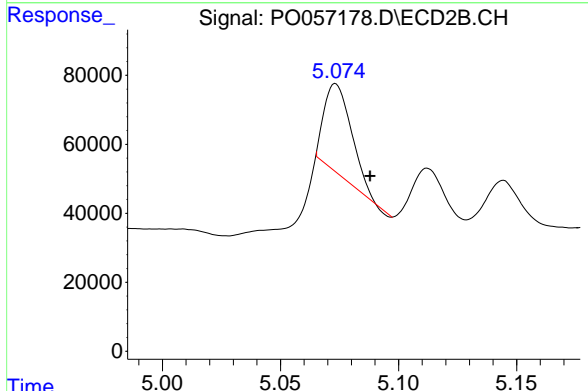
#14 AR-1232-4

R.T.: 4.904 min  
 Delta R.T.: -0.014 min  
 Response: 456935  
 Conc: 927.43 ng/ml

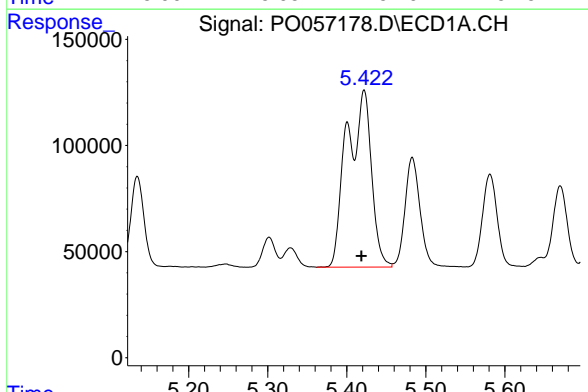


#15 AR-1232-5  
 R.T.: 5.670 min  
 Delta R.T.: -0.018 min  
 Response: 474398  
 Conc: 839.07 ng/ml

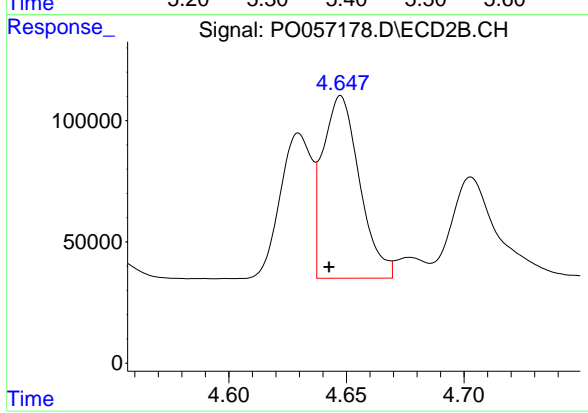
**Instrument :**  
 ECD\_O  
**ClientSampled :**  
 AR1660CCC500



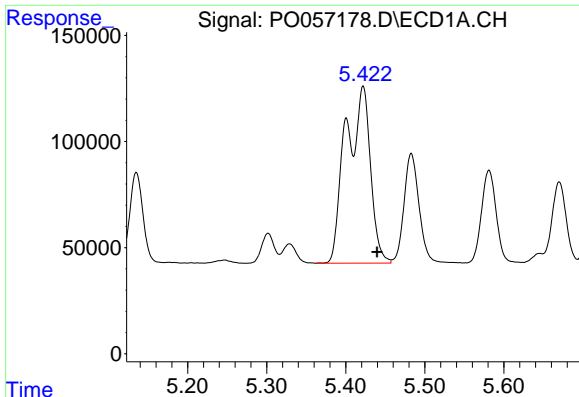
#15 AR-1232-5  
 R.T.: 5.073 min  
 Delta R.T.: -0.015 min  
 Response: 207285  
 Conc: 368.01 ng/ml



#16 AR-1242-1  
 R.T.: 5.422 min  
 Delta R.T.: 0.004 min  
 Response: 1794352  
 Conc: 1040.09 ng/ml



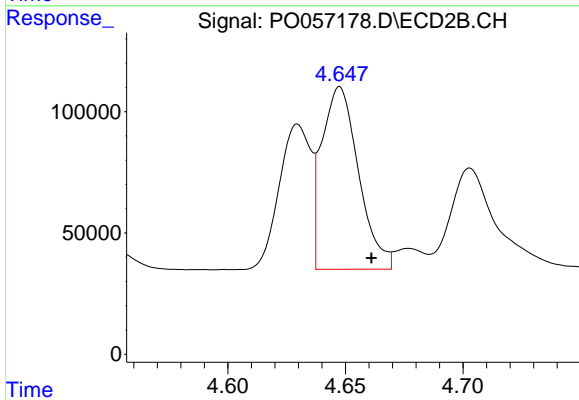
#16 AR-1242-1  
 R.T.: 4.648 min  
 Delta R.T.: 0.005 min  
 Response: 820547  
 Conc: 662.49 ng/ml



#17 AR-1242-2

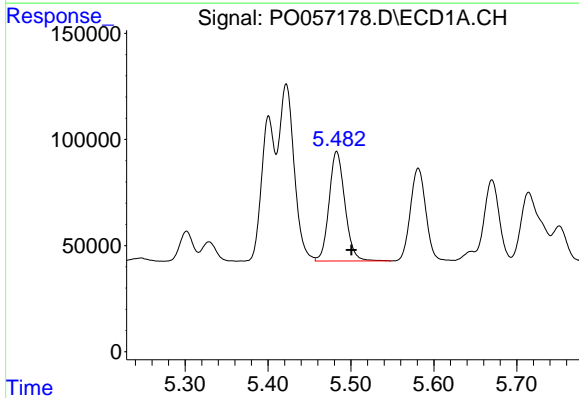
R.T.: 5.422 min  
 Delta R.T.: -0.018 min  
 Response: 1794352  
 Conc: 706.78 ng/ml

Instrument :  
 ECD\_O  
 ClientSampleId :  
 AR1660CCC500



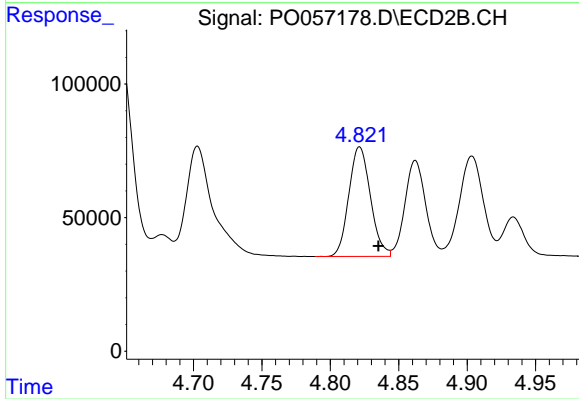
#17 AR-1242-2

R.T.: 4.648 min  
 Delta R.T.: -0.013 min  
 Response: 820547  
 Conc: 456.26 ng/ml



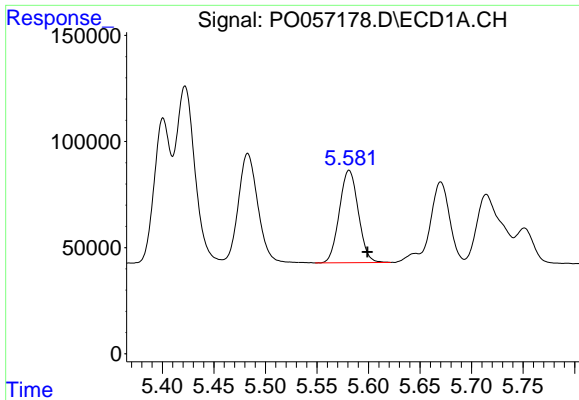
#18 AR-1242-3

R.T.: 5.483 min  
 Delta R.T.: -0.018 min  
 Response: 683745  
 Conc: 420.50 ng/ml



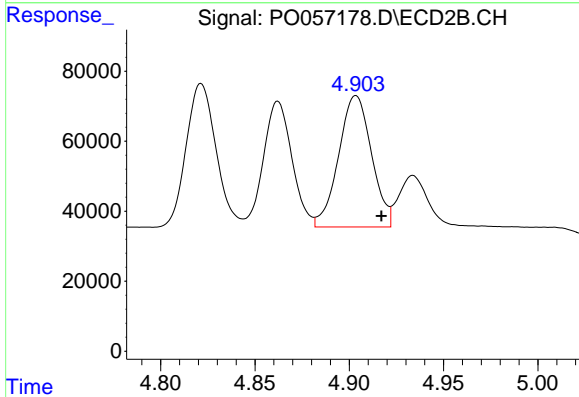
#18 AR-1242-3

R.T.: 4.821 min  
 Delta R.T.: -0.014 min  
 Response: 452015  
 Conc: 459.78 ng/ml

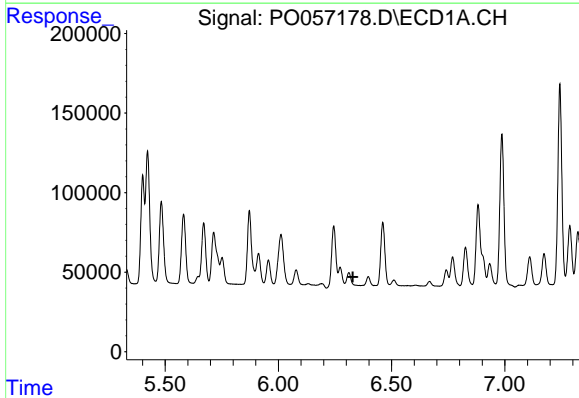


#19 AR-1242-4  
 R.T.: 5.581 min  
 Delta R.T.: -0.018 min  
 Response: 556232  
 Conc: 416.12 ng/ml

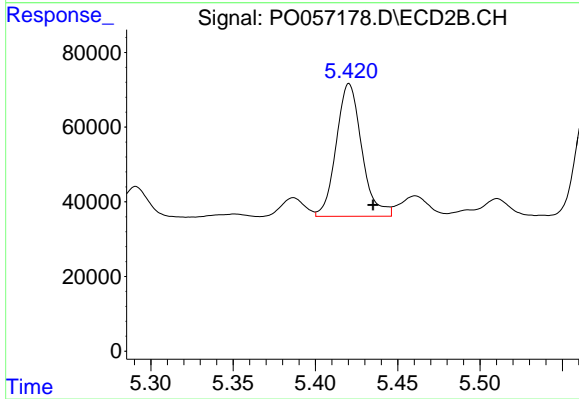
**Instrument :**  
 ECD\_O  
**ClientSampled :**  
 AR1660CCC500



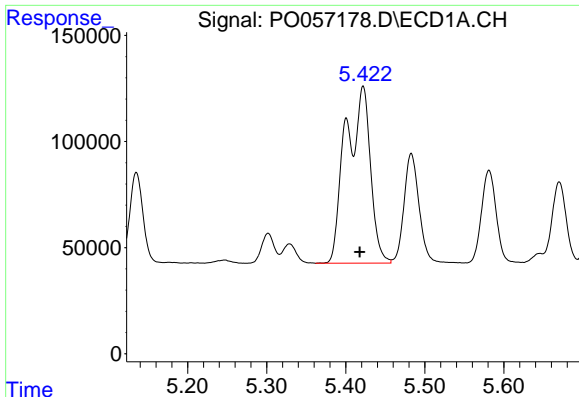
#19 AR-1242-4  
 R.T.: 4.904 min  
 Delta R.T.: -0.013 min  
 Response: 456935  
 Conc: 469.57 ng/ml



#20 AR-1242-5  
 R.T.: 0.000 min  
 Exp R.T. : 6.329 min  
 Response: 0  
 Conc: N.D.



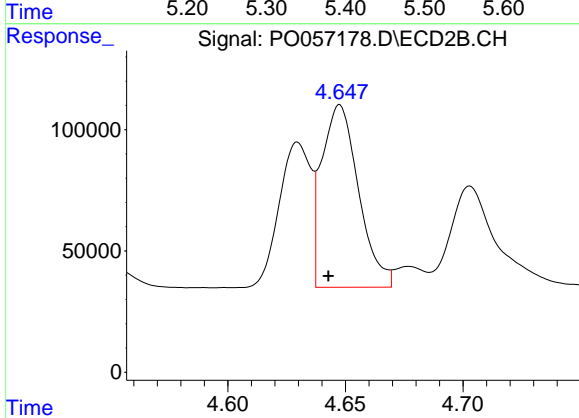
#20 AR-1242-5  
 R.T.: 5.420 min  
 Delta R.T.: -0.015 min  
 Response: 383584  
 Conc: 324.45 ng/ml



#21 AR-1248-1

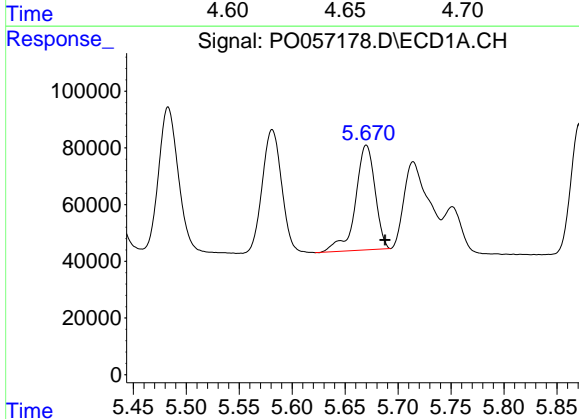
R.T.: 5.422 min  
 Delta R.T.: 0.004 min  
 Response: 1794352  
 Conc: 1392.57 ng/ml

Instrument :  
 ECD\_O  
 ClientSampleId :  
 AR1660CCC500



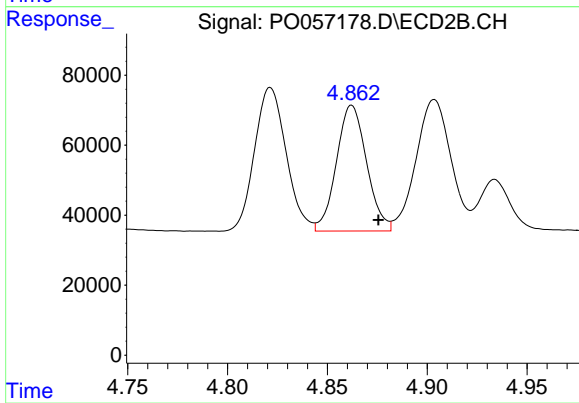
#21 AR-1248-1

R.T.: 4.648 min  
 Delta R.T.: 0.005 min  
 Response: 820547  
 Conc: 876.17 ng/ml



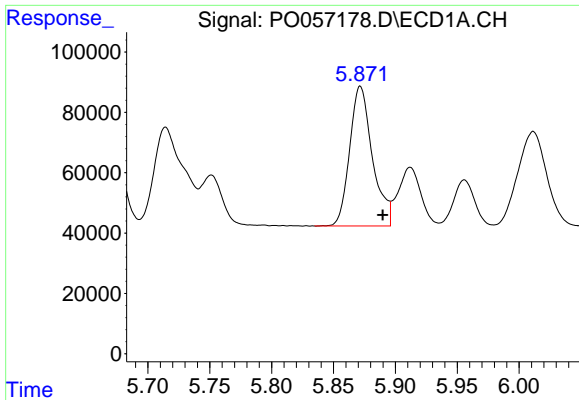
#22 AR-1248-2

R.T.: 5.670 min  
 Delta R.T.: -0.018 min  
 Response: 474398  
 Conc: 254.66 ng/ml



#22 AR-1248-2

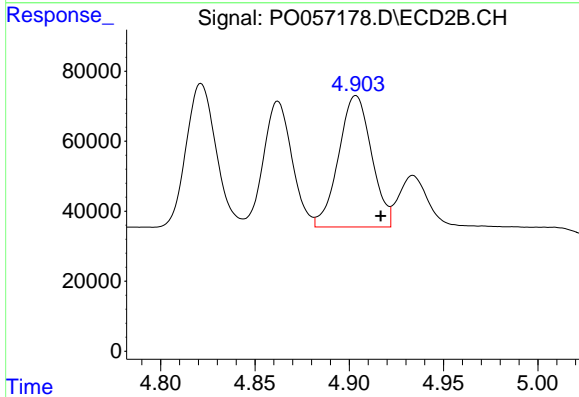
R.T.: 4.862 min  
 Delta R.T.: -0.013 min  
 Response: 378543  
 Conc: 297.96 ng/ml



#23 AR-1248-3

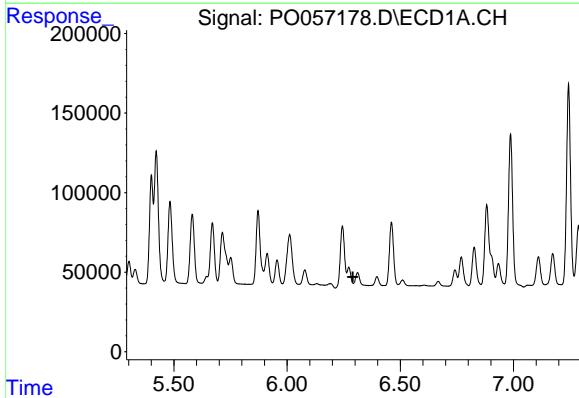
R.T.: 5.872 min  
 Delta R.T.: -0.018 min  
 Response: 592377  
 Conc: 288.77 ng/ml

Instrument :  
 ECD\_O  
 ClientSampleId :  
 AR1660CCC500



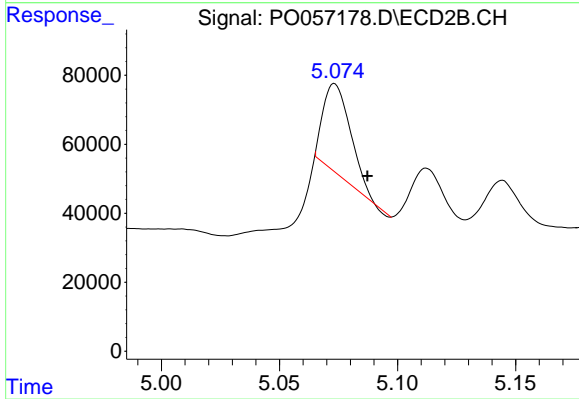
#23 AR-1248-3

R.T.: 4.904 min  
 Delta R.T.: -0.013 min  
 Response: 456935  
 Conc: 349.90 ng/ml



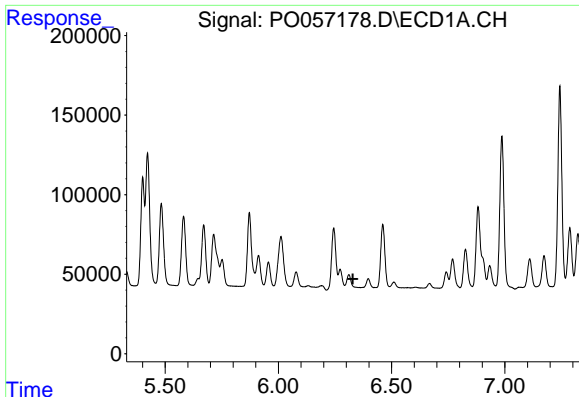
#24 AR-1248-4

R.T.: 0.000 min  
 Exp R.T. : 6.291 min  
 Response: 0  
 Conc: N.D.



#24 AR-1248-4

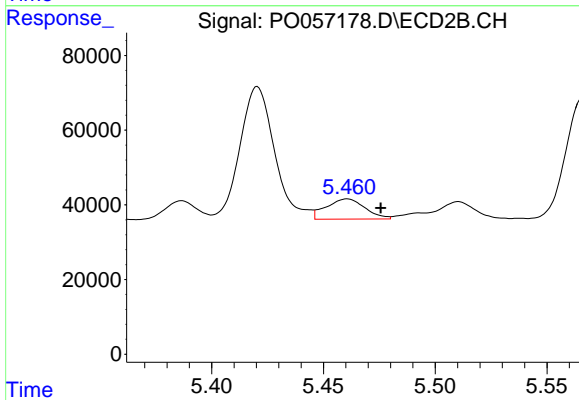
R.T.: 5.073 min  
 Delta R.T.: -0.014 min  
 Response: 207285  
 Conc: 130.89 ng/ml



#25 AR-1248-5

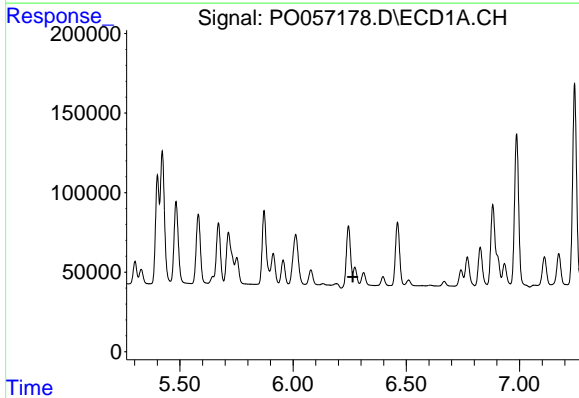
R.T.: 0.000 min  
 Exp R.T.: 6.329 min  
 Response: 0  
 Conc: N.D.

Instrument :  
 ECD\_O  
 ClientSampleId :  
 AR1660CCC500



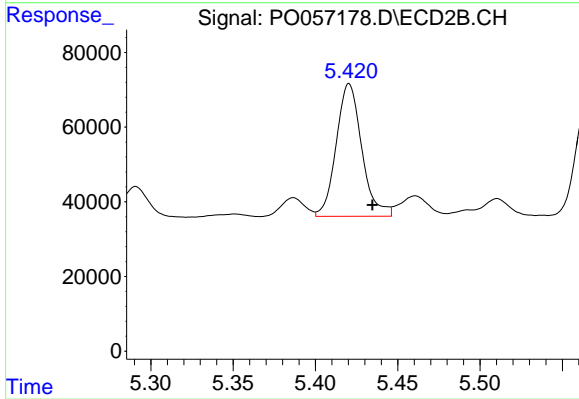
#25 AR-1248-5

R.T.: 5.461 min  
 Delta R.T.: -0.015 min  
 Response: 65373  
 Conc: 39.50 ng/ml



#26 AR-1254-1

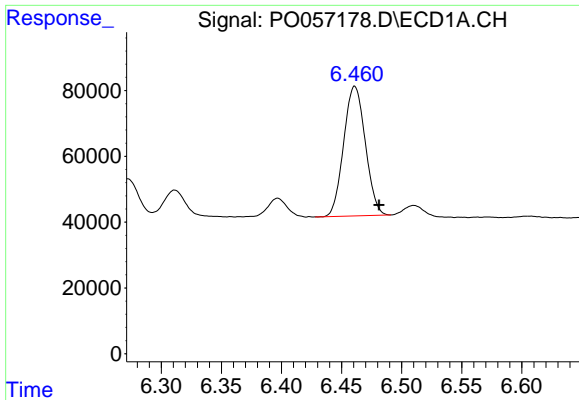
R.T.: 0.000 min  
 Exp R.T.: 6.264 min  
 Response: 0  
 Conc: N.D.



#26 AR-1254-1

R.T.: 5.420 min  
 Delta R.T.: -0.014 min  
 Response: 383584  
 Conc: 145.04 ng/ml

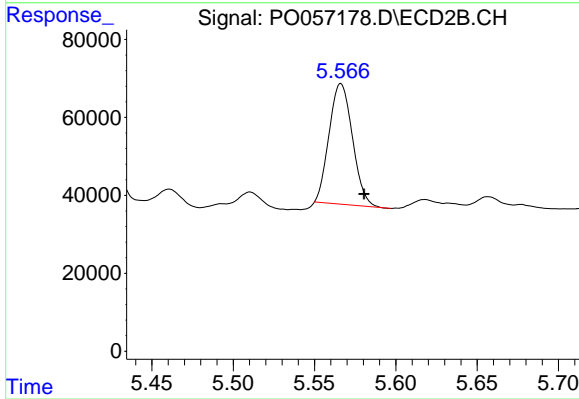




#27 AR-1254-2

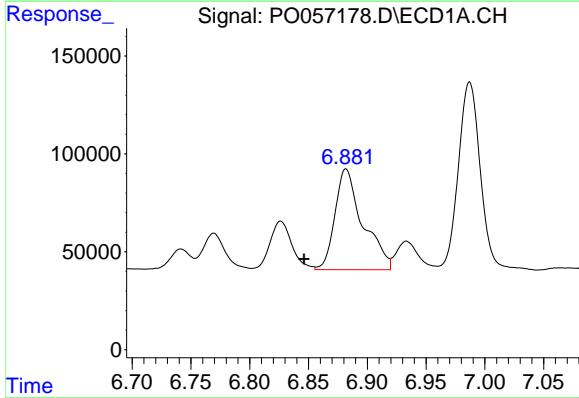
R.T.: 6.461 min  
 Delta R.T.: -0.020 min  
 Response: 493943  
 Conc: 127.17 ng/ml

Instrument :  
 ECD\_O  
 ClientSampleId :  
 AR1660CCC500



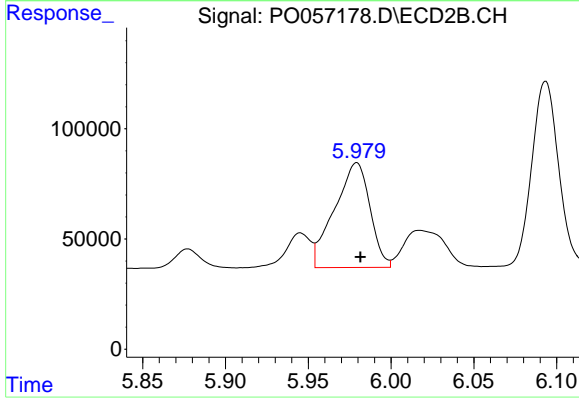
#27 AR-1254-2

R.T.: 5.566 min  
 Delta R.T.: -0.014 min  
 Response: 309423  
 Conc: 143.53 ng/ml



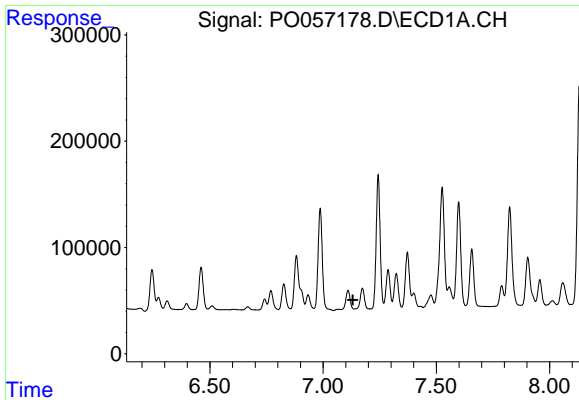
#28 AR-1254-3

R.T.: 6.882 min  
 Delta R.T.: 0.036 min  
 Response: 848430  
 Conc: 205.76 ng/ml



#28 AR-1254-3

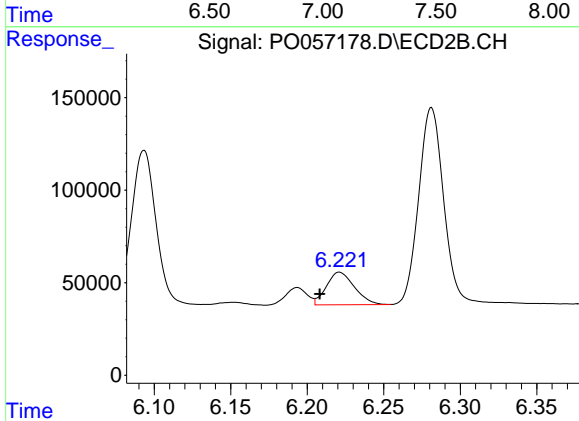
R.T.: 5.979 min  
 Delta R.T.: -0.002 min  
 Response: 706376  
 Conc: 192.94 ng/ml



#29 AR-1254-4

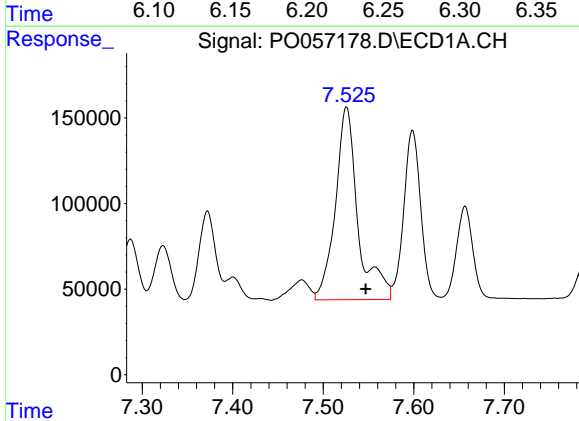
R.T.: 0.000 min  
 Exp R.T.: 7.131 min  
 Response: 0  
 Conc: N.D.

**Instrument :**  
 ECD\_O  
**ClientSampleId :**  
 AR1660CCC500



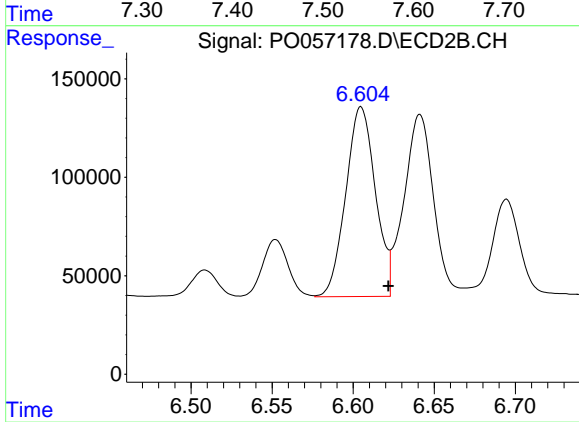
#29 AR-1254-4

R.T.: 6.221 min  
 Delta R.T.: 0.013 min  
 Response: 225307  
 Conc: 102.56 ng/ml



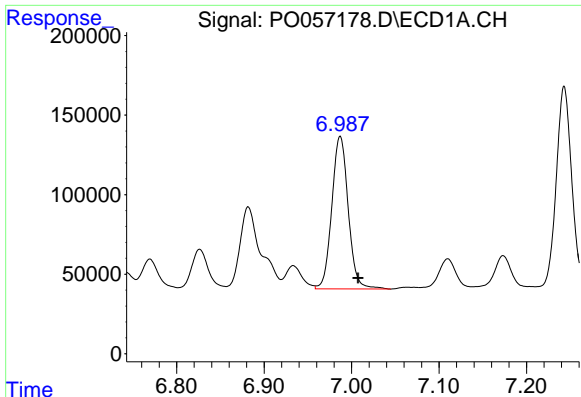
#30 AR-1254-5

R.T.: 7.526 min  
 Delta R.T.: -0.021 min  
 Response: 1950421  
 Conc: 517.95 ng/ml



#30 AR-1254-5

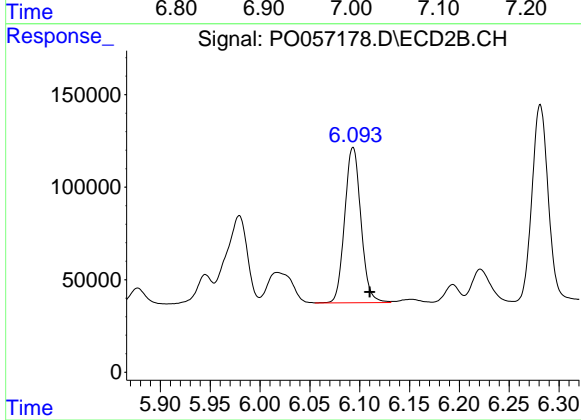
R.T.: 6.605 min  
 Delta R.T.: -0.017 min  
 Response: 1225972  
 Conc: 386.71 ng/ml



#31 AR-1260-1

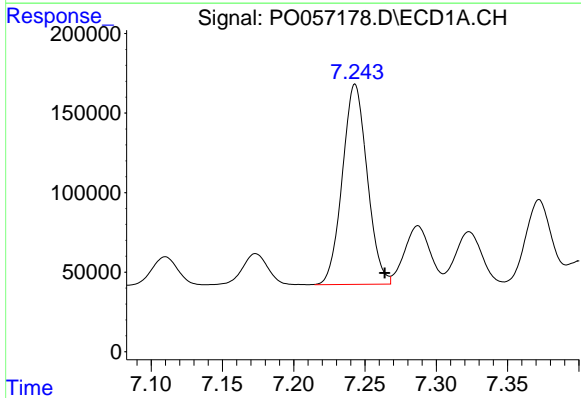
R.T.: 6.987 min  
 Delta R.T.: -0.020 min  
 Response: 1252862  
 Conc: 488.22 ng/ml

Instrument :  
 ECD\_O  
 ClientSampleId :  
 AR1660CCC500



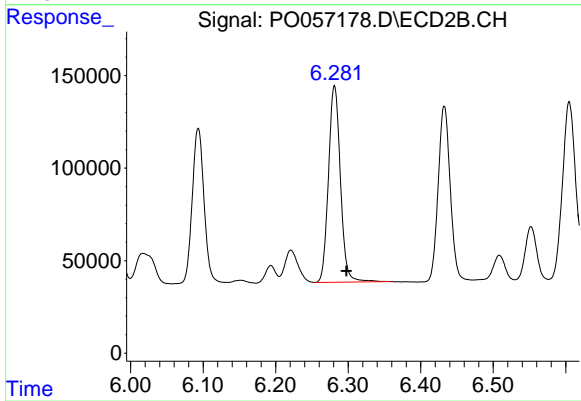
#31 AR-1260-1

R.T.: 6.093 min  
 Delta R.T.: -0.017 min  
 Response: 954215  
 Conc: 477.02 ng/ml



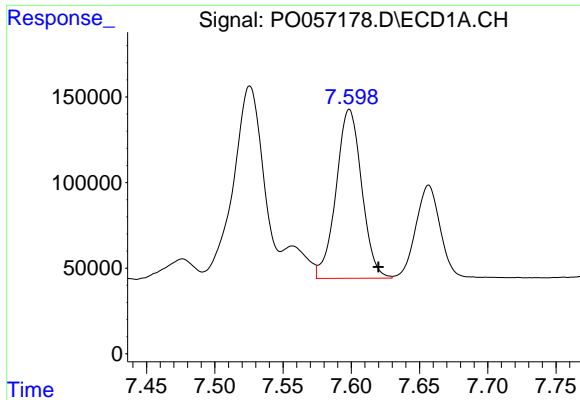
#32 AR-1260-2

R.T.: 7.243 min  
 Delta R.T.: -0.021 min  
 Response: 1524258  
 Conc: 504.03 ng/ml



#32 AR-1260-2

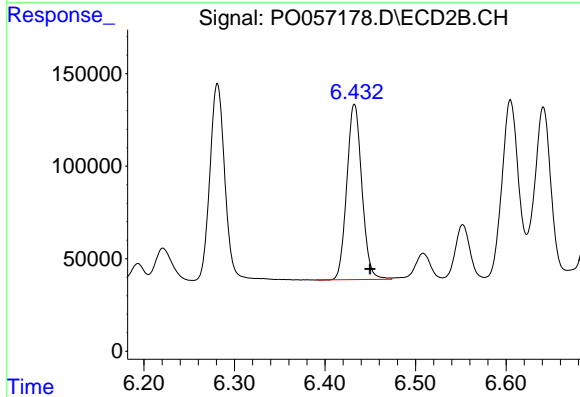
R.T.: 6.281 min  
 Delta R.T.: -0.016 min  
 Response: 1218870  
 Conc: 494.48 ng/ml



#33 AR-1260-3

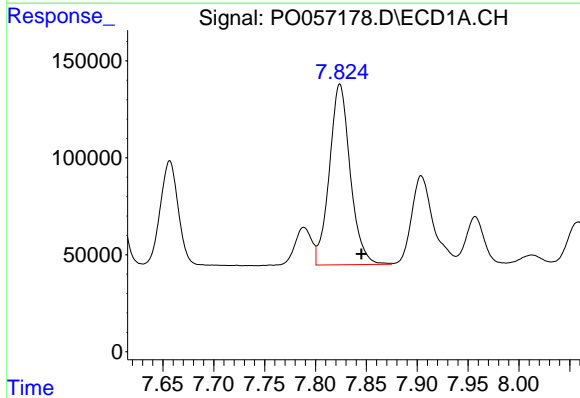
R.T.: 7.599 min  
 Delta R.T.: -0.021 min  
 Response: 1291860  
 Conc: 536.25 ng/ml

Instrument :  
 ECD\_O  
 ClientSampleId :  
 AR1660CCC500



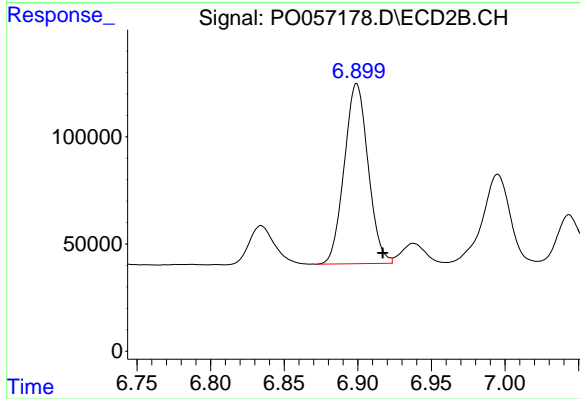
#33 AR-1260-3

R.T.: 6.433 min  
 Delta R.T.: -0.017 min  
 Response: 1098303  
 Conc: 489.61 ng/ml



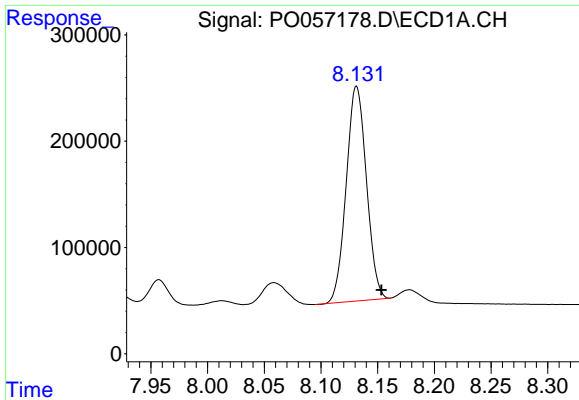
#34 AR-1260-4

R.T.: 7.824 min  
 Delta R.T.: -0.021 min  
 Response: 1329959  
 Conc: 507.77 ng/ml



#34 AR-1260-4

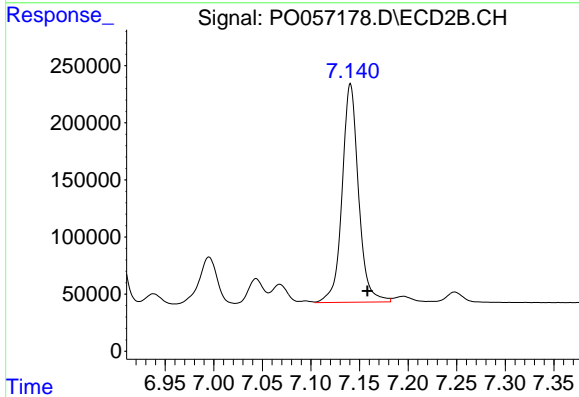
R.T.: 6.899 min  
 Delta R.T.: -0.018 min  
 Response: 948906  
 Conc: 509.89 ng/ml



#35 AR-1260-5

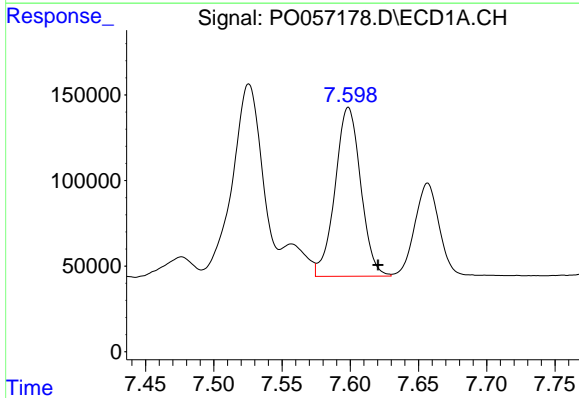
R.T.: 8.132 min  
 Delta R.T.: -0.022 min  
 Response: 2507781  
 Conc: 524.41 ng/ml

Instrument :  
 ECD\_O  
 ClientSampleId :  
 AR1660CCC500



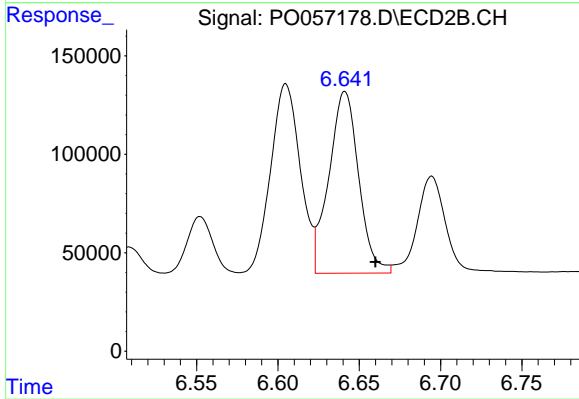
#35 AR-1260-5

R.T.: 7.141 min  
 Delta R.T.: -0.017 min  
 Response: 2251511  
 Conc: 522.11 ng/ml



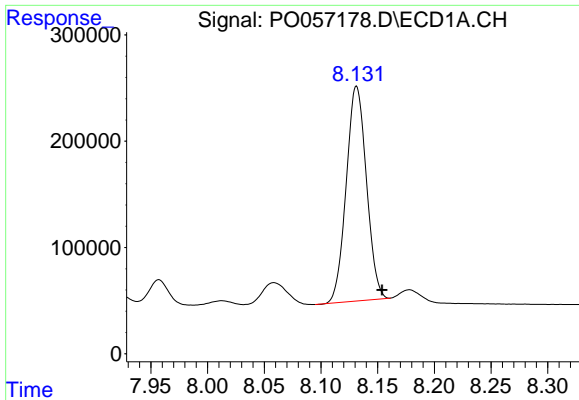
#36 AR-1262-1

R.T.: 7.599 min  
 Delta R.T.: -0.022 min  
 Response: 1291860  
 Conc: 276.22 ng/ml



#36 AR-1262-1

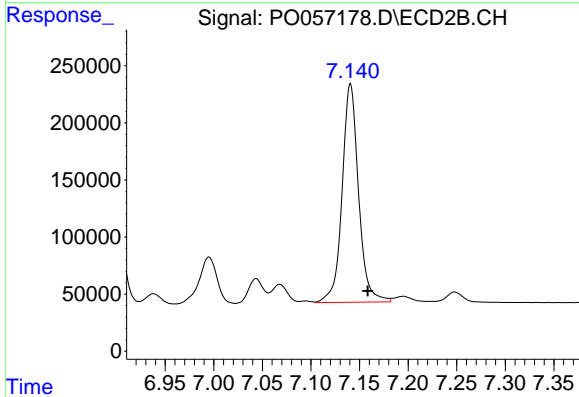
R.T.: 6.641 min  
 Delta R.T.: -0.019 min  
 Response: 1174426  
 Conc: 281.36 ng/ml



#37 AR-1262-2

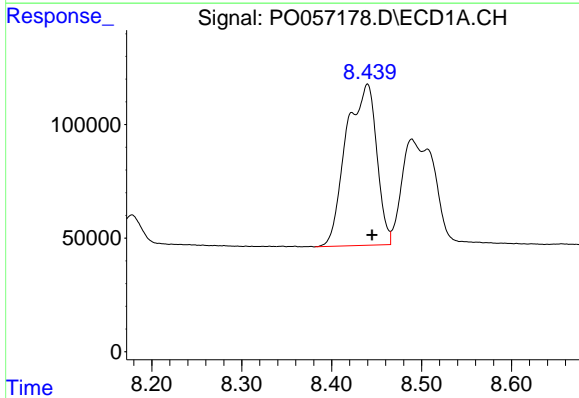
R.T.: 8.132 min  
 Delta R.T.: -0.023 min  
 Response: 2507781  
 Conc: 328.94 ng/ml

Instrument :  
 ECD\_O  
 ClientSampleId :  
 AR1660CCC500



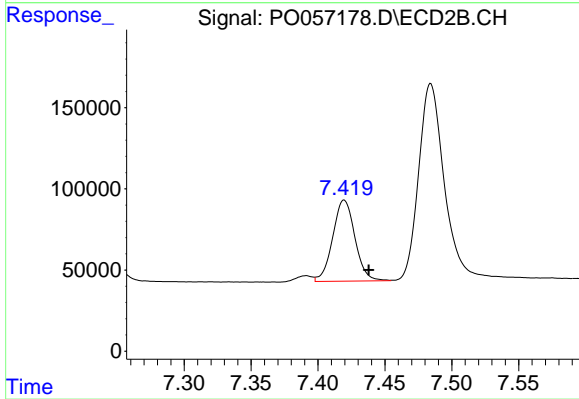
#37 AR-1262-2

R.T.: 7.141 min  
 Delta R.T.: -0.018 min  
 Response: 2251511  
 Conc: 327.70 ng/ml



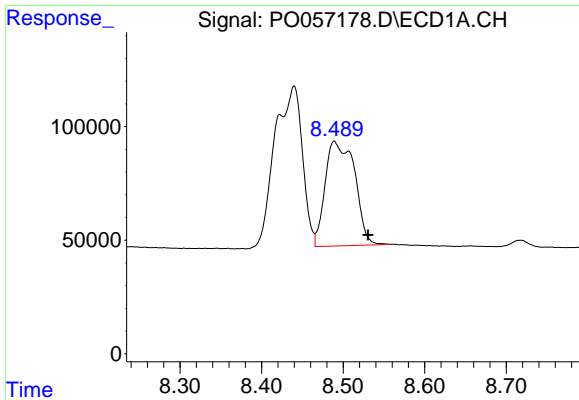
#38 AR-1262-3

R.T.: 8.440 min  
 Delta R.T.: -0.005 min  
 Response: 1668578  
 Conc: 318.82 ng/ml



#38 AR-1262-3

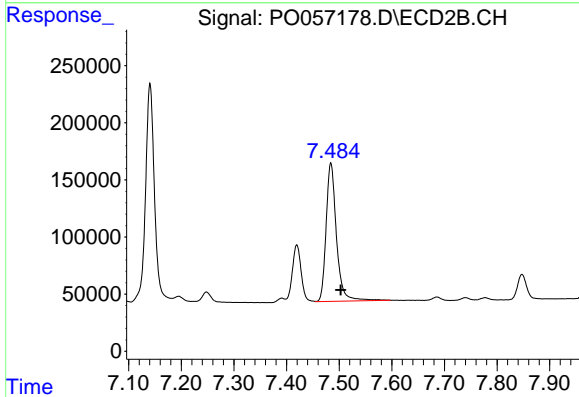
R.T.: 7.420 min  
 Delta R.T.: -0.019 min  
 Response: 579242  
 Conc: 196.13 ng/ml



#39 AR-1262-4

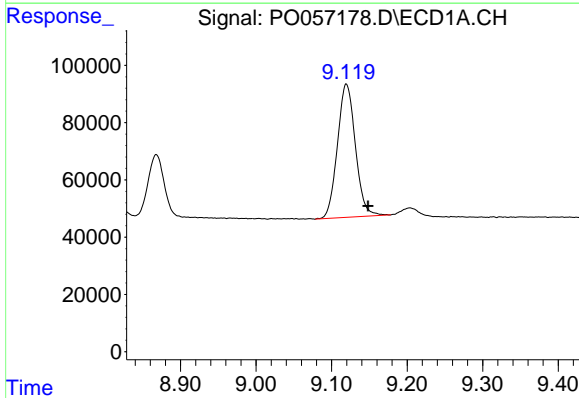
R.T.: 8.490 min  
 Delta R.T.: -0.041 min  
 Response: 1157301  
 Conc: 271.09 ng/ml

Instrument :  
 ECD\_O  
 ClientSampleId :  
 AR1660CCC500



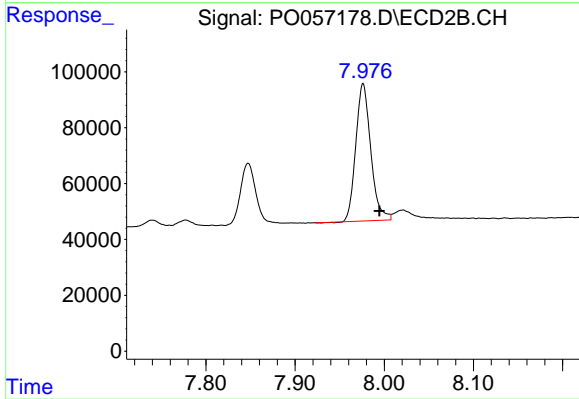
#39 AR-1262-4

R.T.: 7.484 min  
 Delta R.T.: -0.019 min  
 Response: 1654554  
 Conc: 317.54 ng/ml



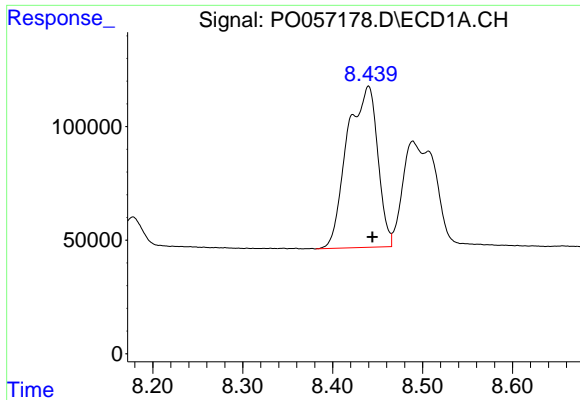
#40 AR-1262-5

R.T.: 9.120 min  
 Delta R.T.: -0.028 min  
 Response: 768437  
 Conc: 279.67 ng/ml



#40 AR-1262-5

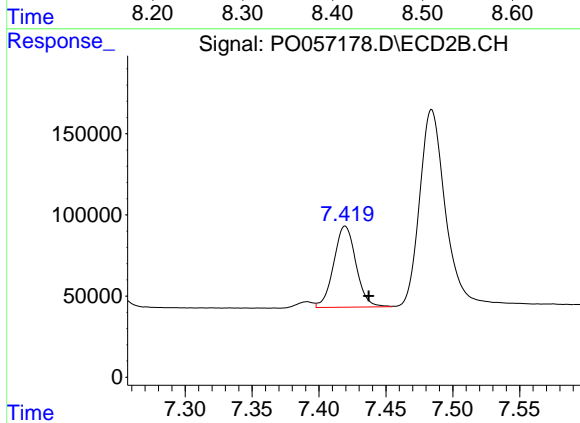
R.T.: 7.976 min  
 Delta R.T.: -0.018 min  
 Response: 572257  
 Conc: 246.43 ng/ml



#41 AR-1268-1

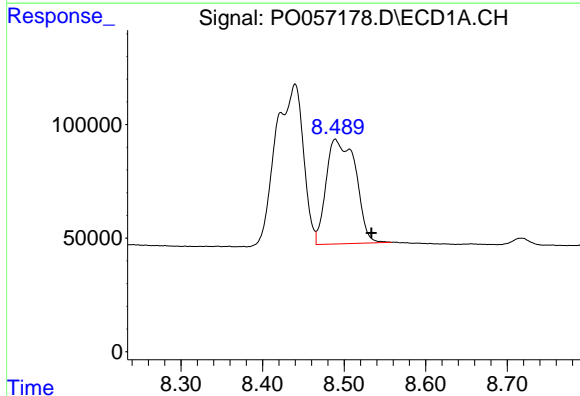
R.T.: 8.440 min  
 Delta R.T.: -0.005 min  
 Response: 1668578  
 Conc: 205.05 ng/ml

Instrument :  
 ECD\_O  
 ClientSampleId :  
 AR1660CCC500



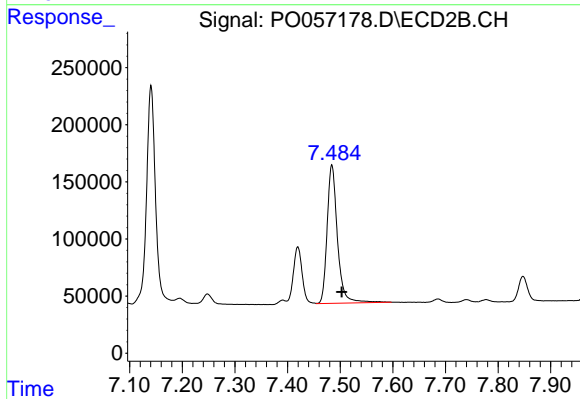
#41 AR-1268-1

R.T.: 7.420 min  
 Delta R.T.: -0.018 min  
 Response: 579242  
 Conc: 77.59 ng/ml



#42 AR-1268-2

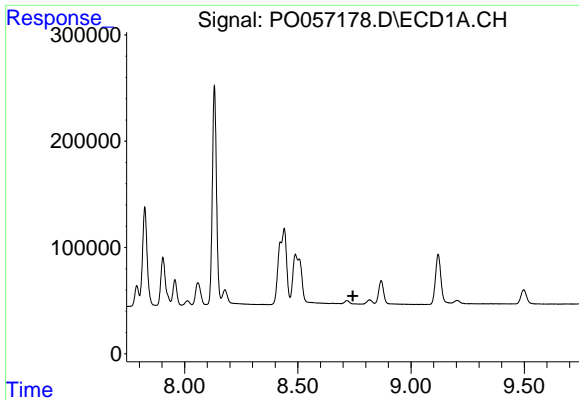
R.T.: 8.490 min  
 Delta R.T.: -0.044 min  
 Response: 1157301  
 Conc: 143.06 ng/ml



#42 AR-1268-2

R.T.: 7.484 min  
 Delta R.T.: -0.019 min  
 Response: 1654554  
 Conc: 236.94 ng/ml

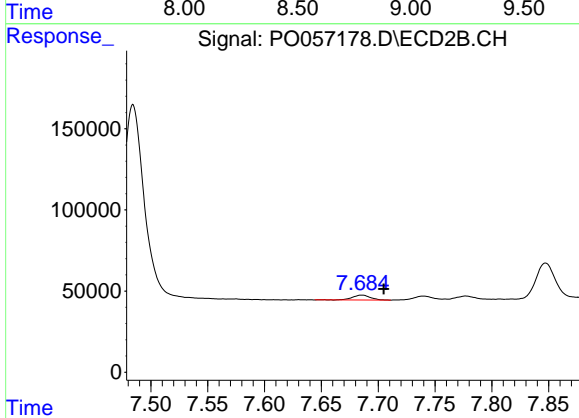




#43 AR-1268-3

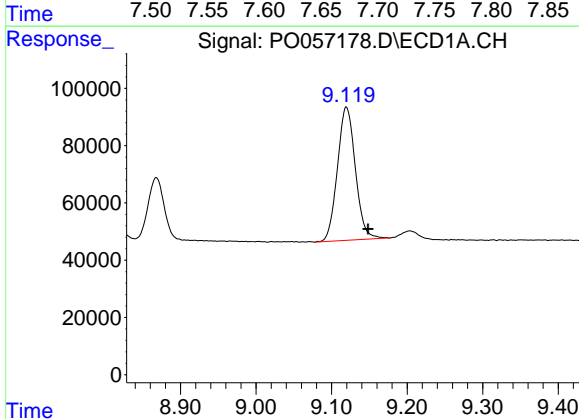
R.T.: 0.000 min  
 Exp R.T.: 8.743 min  
 Response: 0  
 Conc: N.D.

Instrument :  
 ECD\_O  
 ClientSampleId :  
 AR1660CCC500



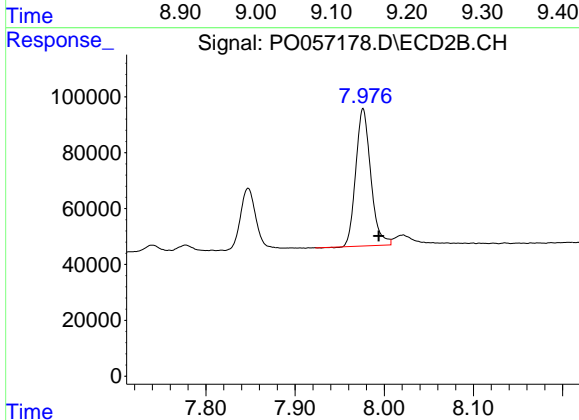
#43 AR-1268-3

R.T.: 7.686 min  
 Delta R.T.: -0.019 min  
 Response: 33654  
 Conc: 5.67 ng/ml



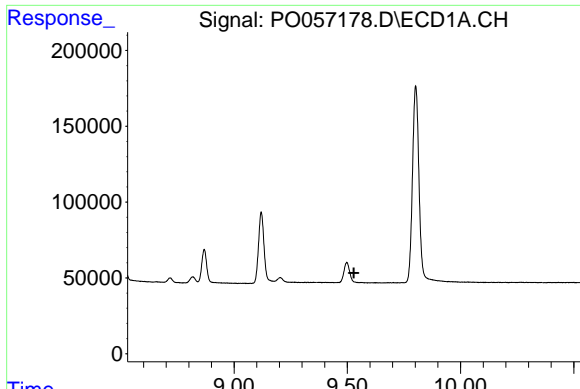
#44 AR-1268-4

R.T.: 9.120 min  
 Delta R.T.: -0.029 min  
 Response: 768437  
 Conc: 281.78 ng/ml



#44 AR-1268-4

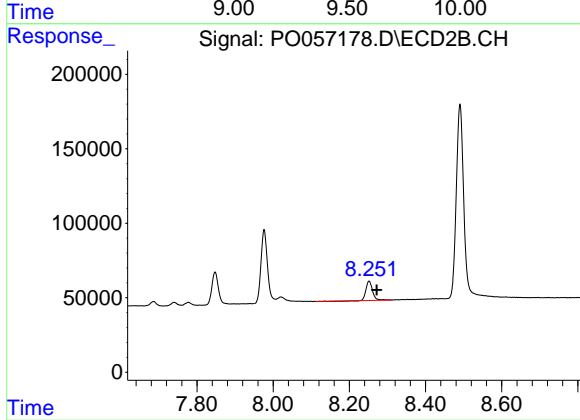
R.T.: 7.976 min  
 Delta R.T.: -0.018 min  
 Response: 572257  
 Conc: 245.16 ng/ml



#45 AR-1268-5

R.T.: 0.000 min  
Exp R.T.: 9.529 min  
Response: 0  
Conc: N.D.

Instrument :  
ECD\_O  
ClientSampled :  
AR1660CCC500



#45 AR-1268-5

R.T.: 8.252 min  
Delta R.T.: -0.020 min  
Response: 150393  
Conc: 8.69 ng/ml