

Data Path : Z:\pestpcbsrv\HPCHEM1\ECD\_0\Data\P0061520\  
 Data File : P0068963.D  
 Signal(s) : Signal #1: ECD1A.CH Signal #2: ECD2B.CH  
 Acq On : 15 Jun 2020 15:56  
 Operator : DD\AJ  
 Sample : L2997-03  
 Misc :  
 ALS Vial : 23 Sample Multiplier: 1

Instrument :  
 ECD\_0  
 ClientSampleId :  
 4352

Integration File signal 1: autoint1.e  
 Integration File signal 2: autoint2.e  
 Quant Time: Jun 15 17:44:38 2020  
 Quant Method : Z:\pestpcbsrv\HPCHEM1\ECD\_0\methods\P0061220.M  
 Quant Title : GC EXTRACTABLES  
 QLast Update : Sat Jun 13 01:32:21 2020  
 Response via : Initial Calibration  
 Integrator: ChemStation 6890 Scale Mode: Small noise peaks clipped

Volume Inj. : 2 µl  
 Signal #1 Phase : ZB-MR1 Signal #2 Phase: ZB-MR2  
 Signal #1 Info : 30Mx0.32mmx 0.50µ Signal #2 Info : 30M x 0.32mm x 0.25µm

Compound	RT#1	RT#2	Resp#1	Resp#2	ng/ml	ng/ml
-----						
System Monitoring Compounds						
1) SA Tetrachlo...	4.407	3.566	715067	903105	26.208	25.420
2) SA Decachlor...	10.070	8.771	878375	1056742	19.560	20.651

Target Compounds

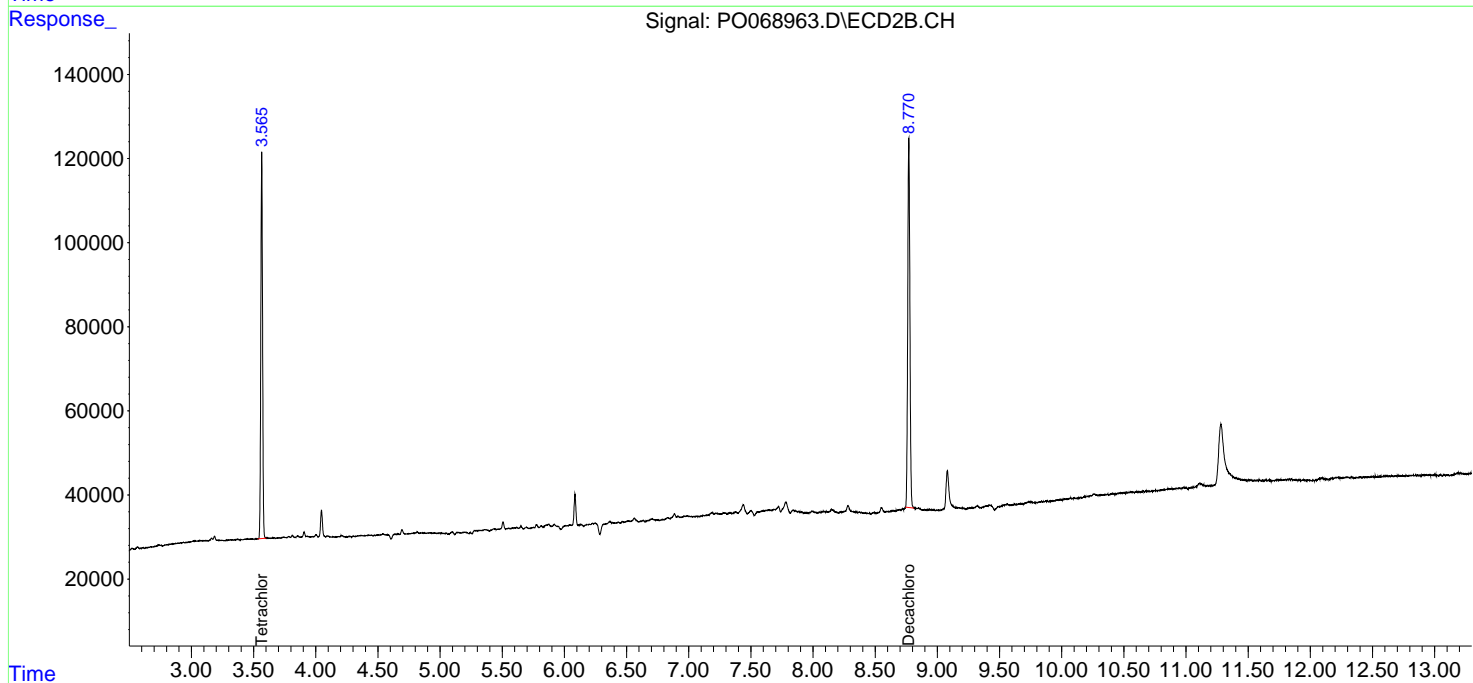
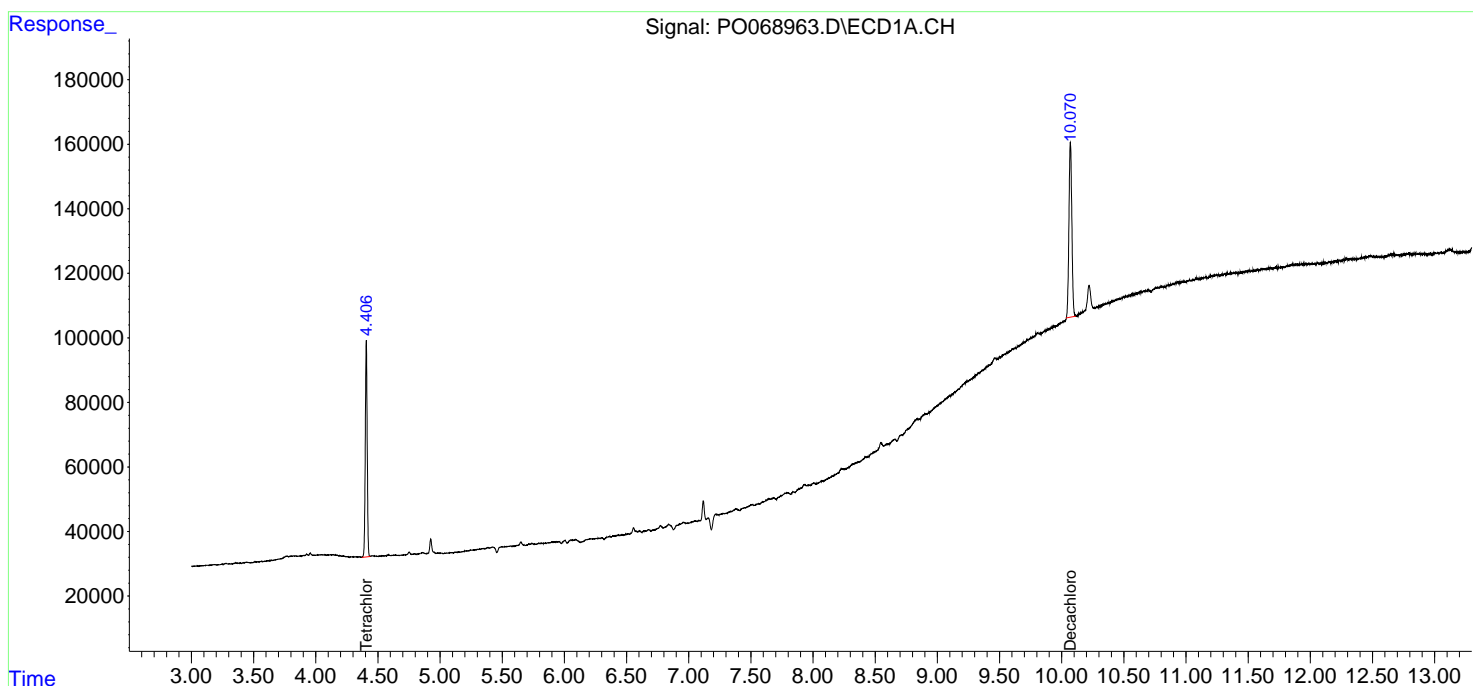
(f)=RT Delta > 1/2 Window (#)=Amounts differ by > 25% (m)=manual int.

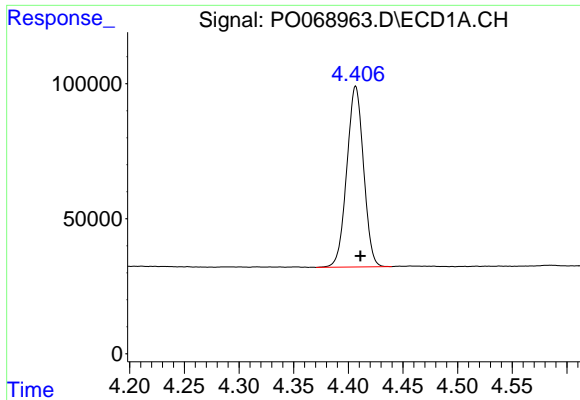
Data Path : Z:\pestpcbsrv\HPCHEM1\ECD\_O\Data\P0061520\  
Data File : P0068963.D  
Signal(s) : Signal #1: ECD1A.CH Signal #2: ECD2B.CH  
Acq On : 15 Jun 2020 15:56  
Operator : DD\AJ  
Sample : L2997-03  
Misc :  
ALS Vial : 23 Sample Multiplier: 1

Instrument :  
ECD\_O  
ClientSampleId :  
4352

Integration File signal 1: autoint1.e  
Integration File signal 2: autoint2.e  
Quant Time: Jun 15 17:44:38 2020  
Quant Method : Z:\pestpcbsrv\HPCHEM1\ECD\_O\methods\P0061220.M  
Quant Title : GC EXTRACTABLES  
QLast Update : Sat Jun 13 01:32:21 2020  
Response via : Initial Calibration  
Integrator: ChemStation 6890 Scale Mode: Small noise peaks clipped

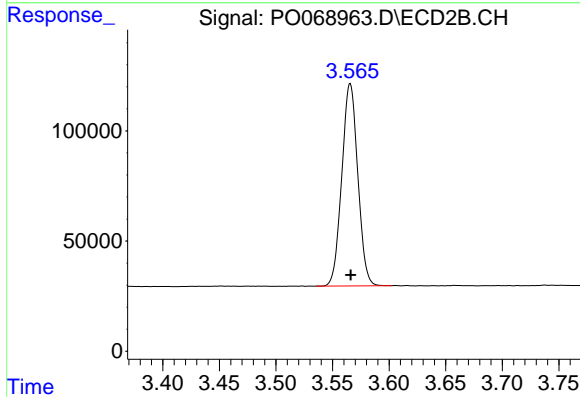
Volume Inj. : 2 µl  
Signal #1 Phase : ZB-MR1 Signal #2 Phase: ZB-MR2  
Signal #1 Info : 30Mx0.32mmx 0.50µ Signal #2 Info : 30M x 0.32mm x 0.25µm



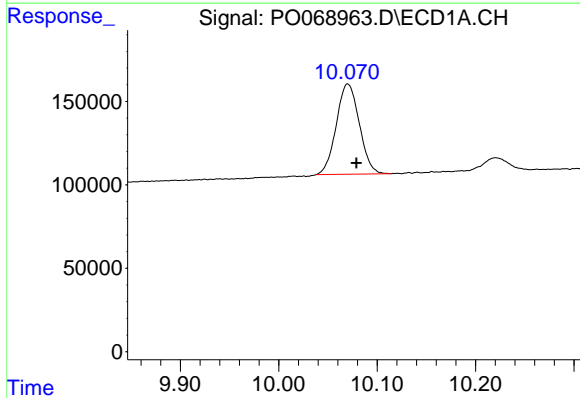


#1 Tetrachloro-m-xylene  
 R.T.: 4.407 min  
 Delta R.T.: -0.004 min  
 Response: 715067  
 Conc: 26.21 ng/ml

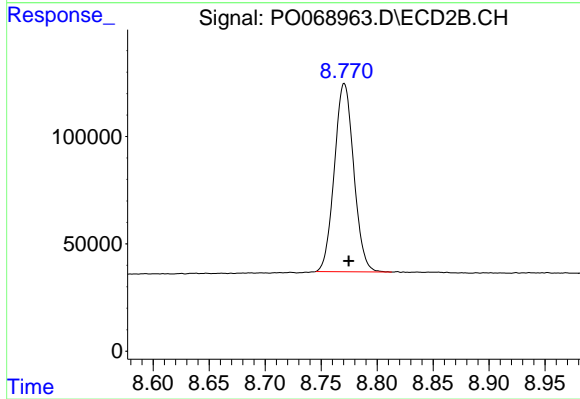
Instrument :  
 ECD\_O  
 ClientSampleId :  
 4352



#1 Tetrachloro-m-xylene  
 R.T.: 3.566 min  
 Delta R.T.: 0.000 min  
 Response: 903105  
 Conc: 25.42 ng/ml



#2 Decachlorobiphenyl  
 R.T.: 10.070 min  
 Delta R.T.: -0.009 min  
 Response: 878375  
 Conc: 19.56 ng/ml



#2 Decachlorobiphenyl  
 R.T.: 8.771 min  
 Delta R.T.: -0.004 min  
 Response: 1056742  
 Conc: 20.65 ng/ml