

Data Path : Z:\pestpcbsrv\HPCHEM1\ECD_0\Data\P0061919\
 Data File : P0057254.D
 Signal(s) : Signal #1: ECD1A.CH Signal #2: ECD2B.CH
 Acq On : 19 Jun 2019 12:19
 Operator : SM/SJ
 Sample : K3443-02
 Misc :
 ALS Vial : 5 Sample Multiplier: 1

Instrument :
 ECD_O
 ClientSampled :

Integration File signal 1: autoint1.e
 Integration File signal 2: autoint2.e
 Quant Time: Jun 19 13:07:43 2019
 Quant Method : Z:\pestpcbsrv\HPCHEM1\ECD_0\methods\P0052319.M
 Quant Title : GC EXTRACTABLES
 QLast Update : Fri May 24 00:11:05 2019
 Response via : Initial Calibration
 Integrator: ChemStation 6890 Scale Mode: Small noise peaks clipped

Volume Inj. : 2 µl
 Signal #1 Phase : ZB-MR1 Signal #2 Phase: ZB-MR2
 Signal #1 Info : 30Mx0.32mmx 0.50µ Signal #2 Info : 30M x 0.32mm x 0.25µm

Compound	RT#1	RT#2	Resp#1	Resp#2	ng/ml	ng/ml
System Monitoring Compounds						
1) SA Tetrachlo...	4.249	3.559	558167	504406	14.580	15.295
2) SA Decachlor...	0.000	8.488	0	295920	N.D.	8.299 #
Target Compounds						
3) L1 AR-1016-1	5.410	4.644	1023903	1140575	569.271	906.307 #
4) L1 AR-1016-2	5.431	4.674	1791051	189091	713.261	104.956 #
5) L1 AR-1016-3	5.491	4.819	546860	578362	340.236	586.606 #
6) L1 AR-1016-4	5.591	4.859	1049369	1338795	799.947	1617.212 #
7) L1 AR-1016-5	5.881	5.109	2644522	70537	1914.089	65.755 #
8) L2 AR-1221-1	0.000	3.721	0	113094	N.D.	222.998 #
9) L2 AR-1221-2	0.000	3.925	0	28472	N.D.	75.549 #
10) L2 AR-1221-3	0.000	3.925	0	28472	N.D.	23.785 #
11) L3 AR-1232-1	0.000	3.925	0	28472	N.D.	31.693 #
12) L3 AR-1232-2	5.143	4.674	409962	189091	618.307	194.562 #
13) L3 AR-1232-3	5.431	4.819	1791051	578362	1262.504	1105.236
14) L3 AR-1232-4	5.591	4.931	1049369	624072	1490.735	1266.670
15) L3 AR-1232-5	5.679	5.109	1760393	70537	3113.599	125.231 #
16) L4 AR-1242-1	5.410	4.644	1023903	1140575	593.501	920.872 #
17) L4 AR-1242-2	5.431	4.674	1791051	189091	705.479	105.143 #
18) L4 AR-1242-3	5.491	4.819	546860	578362	336.319	588.301 #
19) L4 AR-1242-4	5.591	4.931	1049369	624072	785.030	641.325
20) L4 AR-1242-5	6.319	5.417	4052433	3266182	2455.920	2762.633
21) L5 AR-1248-1	5.410	4.644	1023903	1140575	794.639	1217.889 #
22) L5 AR-1248-2	5.679	4.859	1760393	1338795	944.977	1053.799
23) L5 AR-1248-3	5.881	4.931	2644522	624072	1289.159	477.886 #
24) L5 AR-1248-4	6.282	5.109	3023858	70537	1306.944	44.541 #
25) L5 AR-1248-5	6.319	5.458	4052433	3165145	1842.531	1912.392
26) L6 AR-1254-1	6.282	5.417	3023858	3266182	1098.492	1234.979
27) L6 AR-1254-2	6.475	5.563	4204096	753102	1082.387	349.338 #
28) L6 AR-1254-3	6.836	5.963	2702420	2033871	655.388	555.541
29) L6 AR-1254-4	7.120	6.190	2435976	1906392	809.339	867.752
30) L6 AR-1254-5	7.535	6.636	1318851	323802	350.233	102.138 #
31) L7 AR-1260-1	6.996	6.105	486949	563989	189.756	281.941 #
32) L7 AR-1260-2	7.251	6.278	853538	504647	282.239	204.728 #
33) L7 AR-1260-3	0.000	6.429	0	515027	N.D.	229.592 #
34) L7 AR-1260-4	7.827	6.935	781150	259183	298.239	139.269 #
35) L7 AR-1260-5	8.140	7.138	674332	645961	141.012	149.794
36) L8 AR-1262-1	0.000	6.672	0	62167	N.D.	14.894 #
37) L8 AR-1262-2	8.140	7.138	674332	645961	88.451	94.018
38) L8 AR-1262-3	0.000	7.417	0	287884	N.D.	97.475 #
39) L8 AR-1262-4	0.000	7.481	0	546218	N.D.	104.828 #
40) L8 AR-1262-5	0.000	7.974	0	189070	N.D.	81.420 #
41) L9 AR-1268-1	0.000	7.417	0	287884	N.D.	38.564 #

Data Path : Z:\pestpcbsrv\HPCHEM1\ECD_0\Data\P0061919\
 Data File : P0057254.D
 Signal(s) : Signal #1: ECD1A.CH Signal #2: ECD2B.CH
 Acq On : 19 Jun 2019 12:19
 Operator : SM/SJ
 Sample : K3443-02
 Misc :
 ALS Vial : 5 Sample Multiplier: 1

Instrument :
 ECD_0
 ClientSampleId :

Integration File signal 1: autoint1.e
 Integration File signal 2: autoint2.e
 Quant Time: Jun 19 13:07:43 2019
 Quant Method : Z:\pestpcbsrv\HPCHEM1\ECD_0\methods\P0052319.M
 Quant Title : GC EXTRACTABLES
 QLast Update : Fri May 24 00:11:05 2019
 Response via : Initial Calibration
 Integrator: ChemStation 6890 Scale Mode: Small noise peaks clipped

Volume Inj. : 2 µl
 Signal #1 Phase : ZB-MR1 Signal #2 Phase: ZB-MR2
 Signal #1 Info : 30Mx0.32mmx 0.50µ Signal #2 Info : 30M x 0.32mm x 0.25µm

	Compound	RT#1	RT#2	Resp#1	Resp#2	ng/ml	ng/ml
42)	L9 AR-1268-2	0.000	7.481	0	546218	N.D.	78.220 #
43)	L9 AR-1268-3	0.000	7.714	0	16447	N.D.	2.771 #
44)	L9 AR-1268-4	0.000	7.974	0	189070	N.D.	80.998 #
45)	L9 AR-1268-5	0.000	8.250	0	62048	N.D.	3.585 #

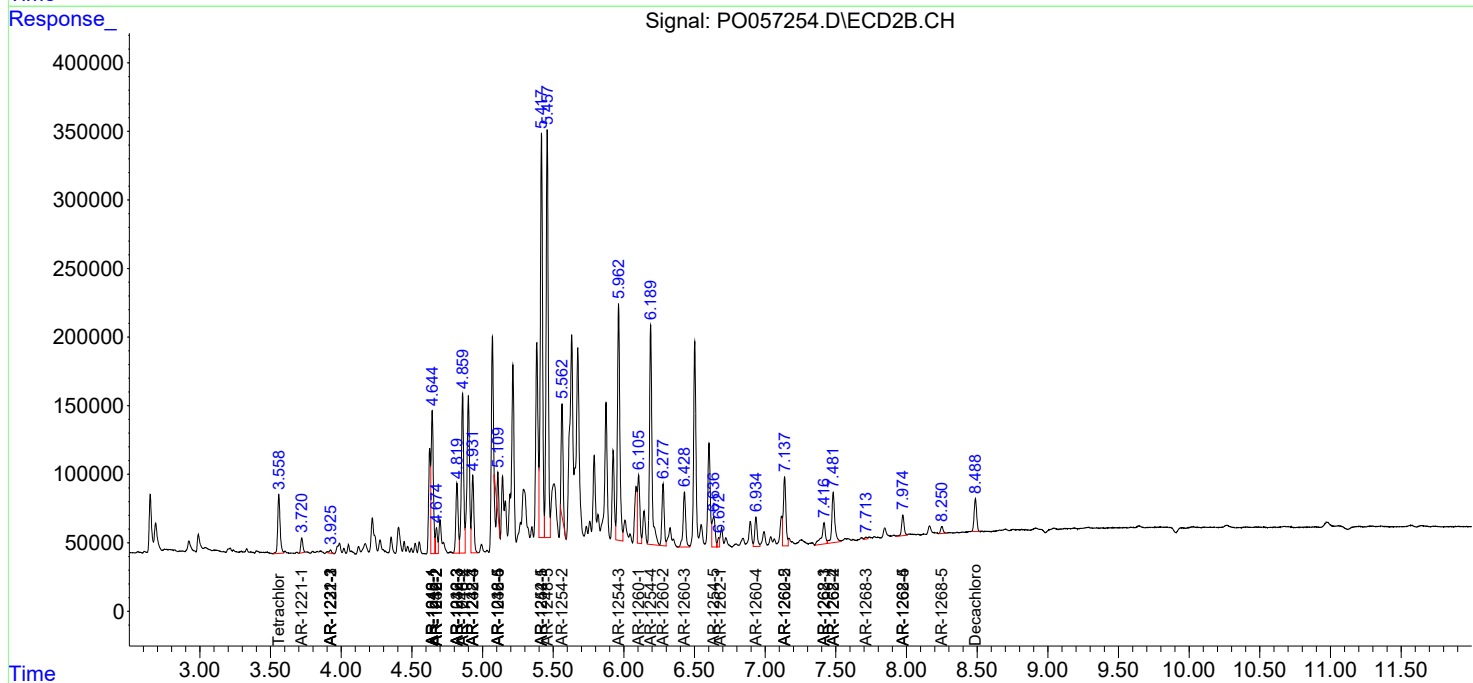
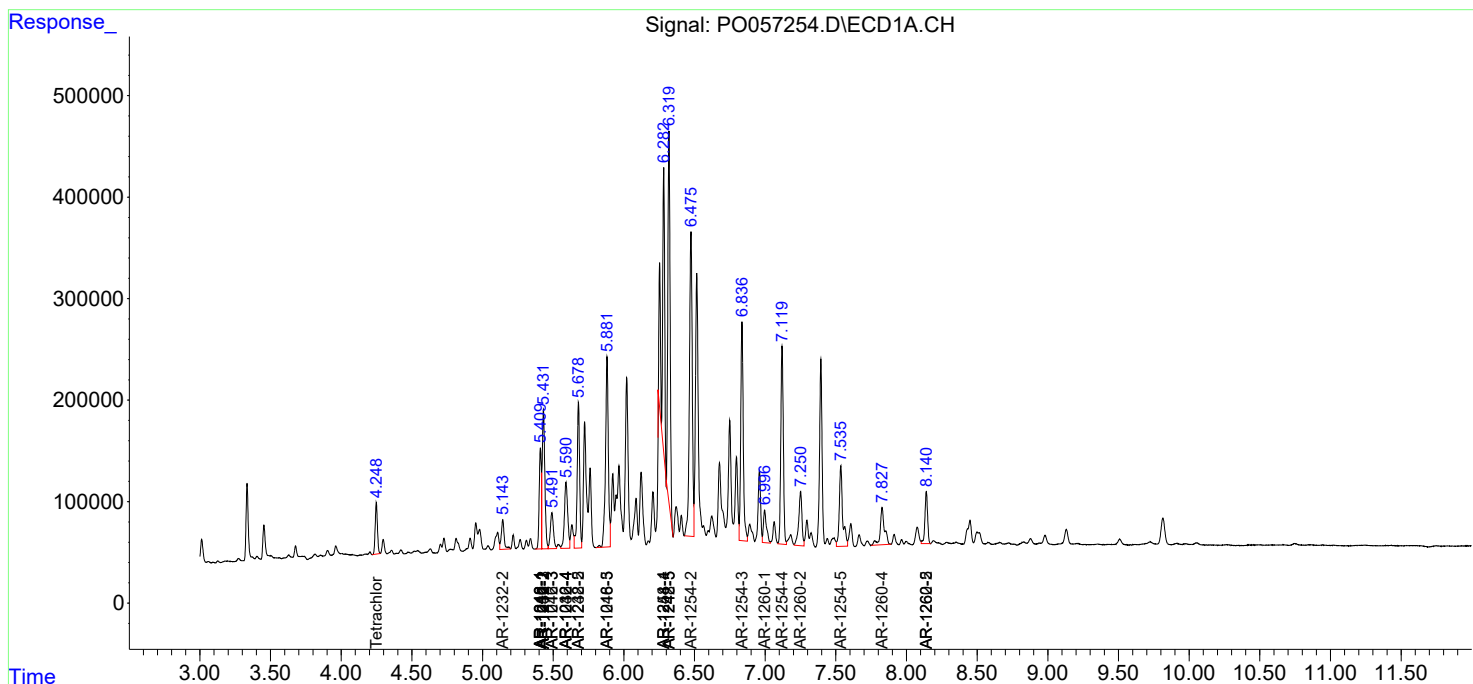
(f)=RT Delta > 1/2 Window (#)=Amounts differ by > 25% (m)=manual int.

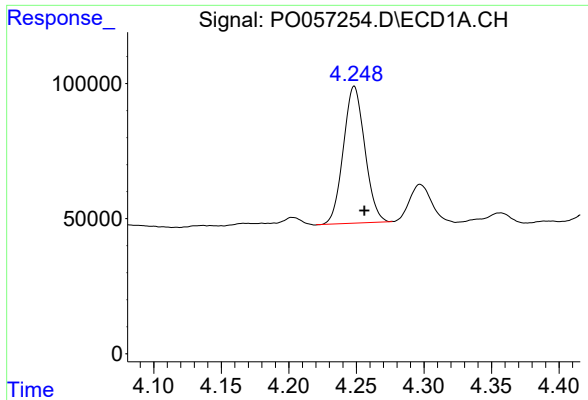
Data Path : Z:\pestpcbsrv\HPCHEM1\ECD_O\Data\P0061919\
 Data File : P0057254.D
 Signal(s) : Signal #1: ECD1A.CH Signal #2: ECD2B.CH
 Acq On : 19 Jun 2019 12:19
 Operator : SM/SJ
 Sample : K3443-02
 Misc :
 ALS Vial : 5 Sample Multiplier: 1

Instrument :
 ECD_O
 ClientSampled :

Integration File signal 1: autoint1.e
 Integration File signal 2: autoint2.e
 Quant Time: Jun 19 13:07:43 2019
 Quant Method : Z:\pestpcbsrv\HPCHEM1\ECD_O\methods\P0052319.M
 Quant Title : GC EXTRACTABLES
 QLast Update : Fri May 24 00:11:05 2019
 Response via : Initial Calibration
 Integrator: ChemStation 6890 Scale Mode: Small noise peaks clipped

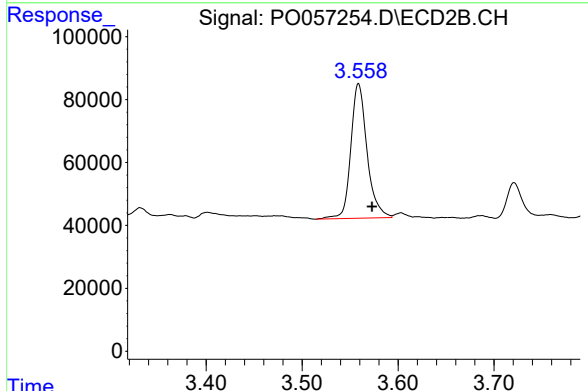
Volume Inj. : 2 µl
 Signal #1 Phase : ZB-MR1 Signal #2 Phase: ZB-MR2
 Signal #1 Info : 30Mx0.32mmx 0.50µ Signal #2 Info : 30M x 0.32mm x 0.25µm



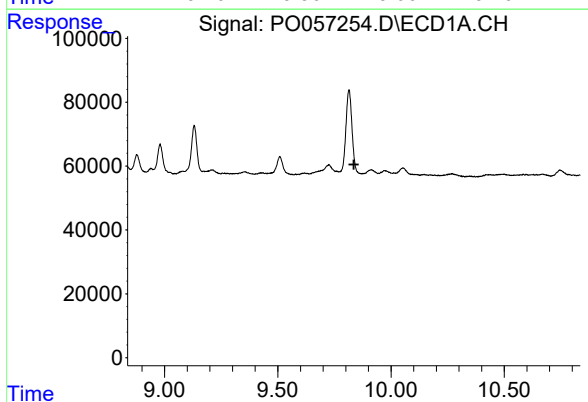


#1 Tetrachloro-m-xylene
 R.T.: 4.249 min
 Delta R.T.: -0.007 min
 Response: 558167
 Conc: 14.58 ng/ml

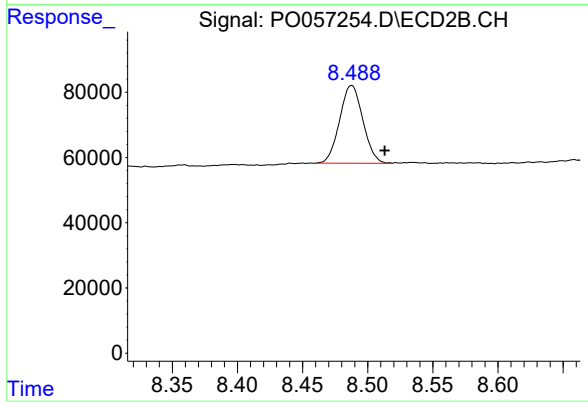
Instrument :
 ECD_O
 ClientSampleId :



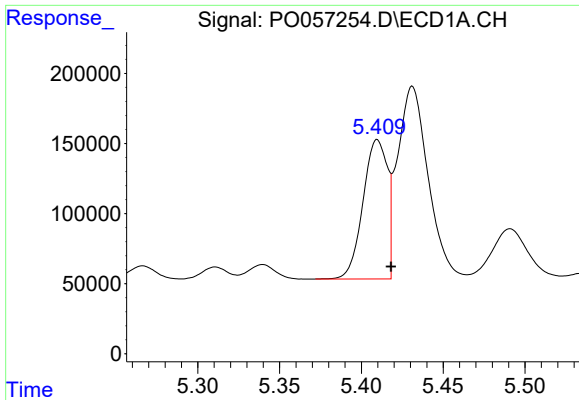
#1 Tetrachloro-m-xylene
 R.T.: 3.559 min
 Delta R.T.: -0.014 min
 Response: 504406
 Conc: 15.30 ng/ml



#2 Decachlorobiphenyl
 R.T.: 0.000 min
 Exp R.T. : 9.836 min
 Response: 0
 Conc: N.D.



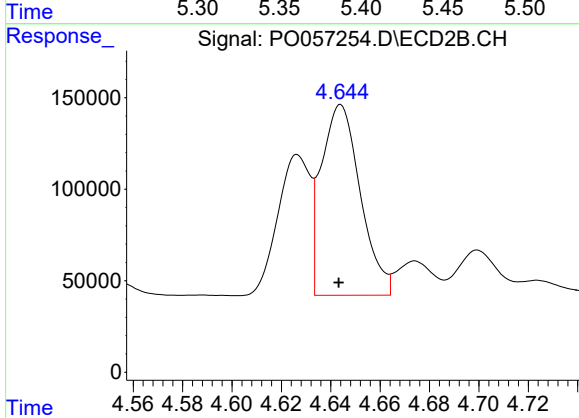
#2 Decachlorobiphenyl
 R.T.: 8.488 min
 Delta R.T.: -0.025 min
 Response: 295920
 Conc: 8.30 ng/ml



#3 AR-1016-1

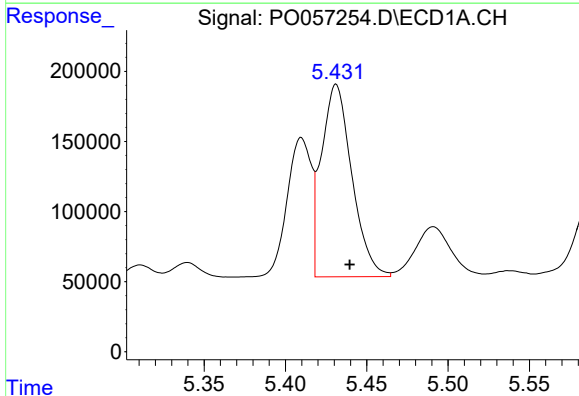
R.T.: 5.410 min
 Delta R.T.: -0.008 min
 Response: 1023903
 Conc: 569.27 ng/ml

Instrument :
 ECD_O
 ClientSampled :



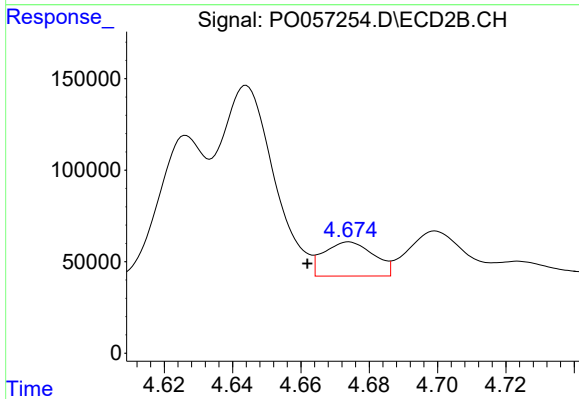
#3 AR-1016-1

R.T.: 4.644 min
 Delta R.T.: 0.000 min
 Response: 1140575
 Conc: 906.31 ng/ml



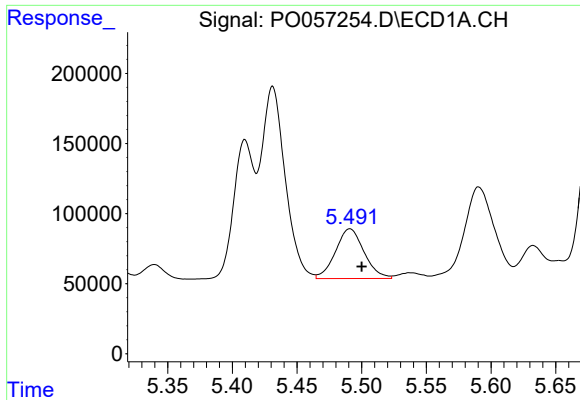
#4 AR-1016-2

R.T.: 5.431 min
 Delta R.T.: -0.008 min
 Response: 1791051
 Conc: 713.26 ng/ml



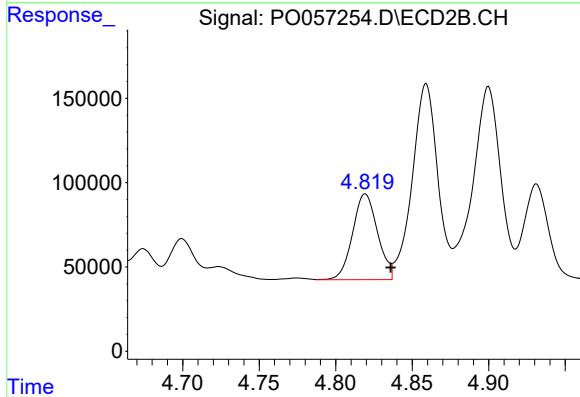
#4 AR-1016-2

R.T.: 4.674 min
 Delta R.T.: 0.012 min
 Response: 189091
 Conc: 104.96 ng/ml

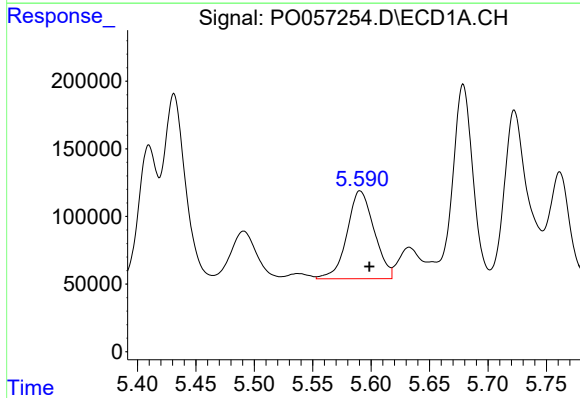


#5 AR-1016-3
 R.T.: 5.491 min
 Delta R.T.: -0.009 min
 Response: 546860
 Conc: 340.24 ng/ml

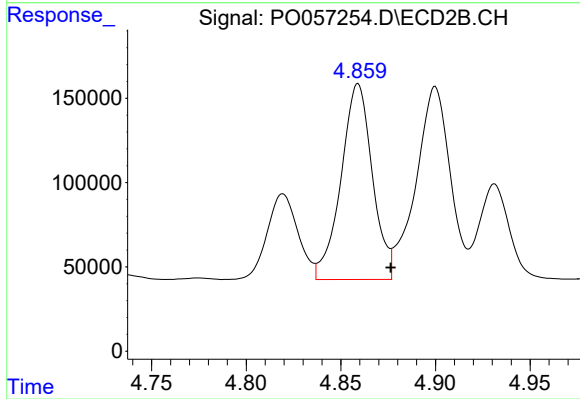
Instrument :
 ECD_O
 ClientSampled :



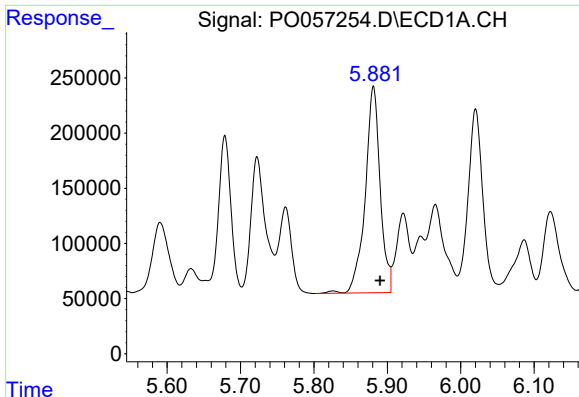
#5 AR-1016-3
 R.T.: 4.819 min
 Delta R.T.: -0.017 min
 Response: 578362
 Conc: 586.61 ng/ml



#6 AR-1016-4
 R.T.: 5.591 min
 Delta R.T.: -0.008 min
 Response: 1049369
 Conc: 799.95 ng/ml



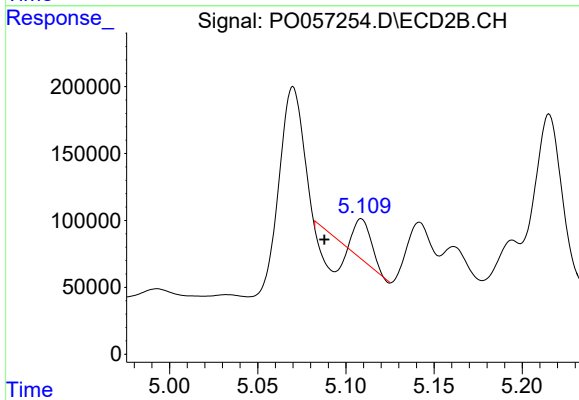
#6 AR-1016-4
 R.T.: 4.859 min
 Delta R.T.: -0.017 min
 Response: 1338795
 Conc: 1617.21 ng/ml



#7 AR-1016-5

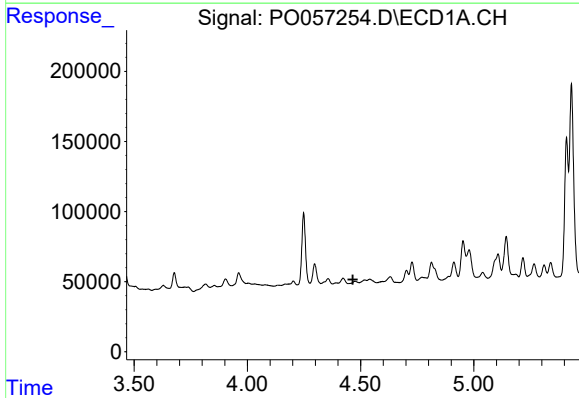
R.T.: 5.881 min
 Delta R.T.: -0.009 min
 Response: 2644522
 Conc: 1914.09 ng/ml

Instrument :
 ECD_O
 ClientSampled :



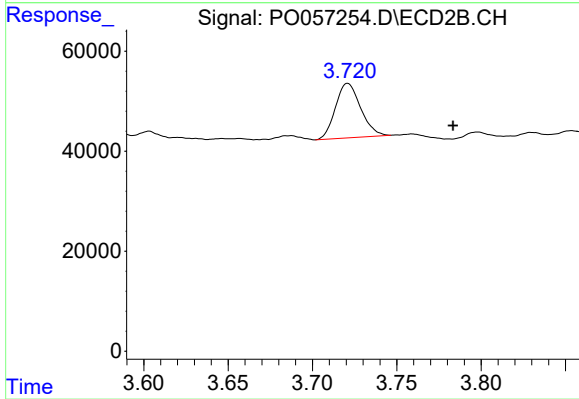
#7 AR-1016-5

R.T.: 5.109 min
 Delta R.T.: 0.021 min
 Response: 70537
 Conc: 65.76 ng/ml



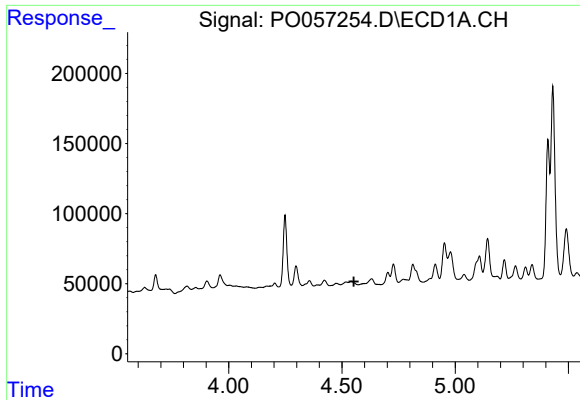
#8 AR-1221-1

R.T.: 0.000 min
 Exp R.T. : 4.466 min
 Response: 0
 Conc: N.D.



#8 AR-1221-1

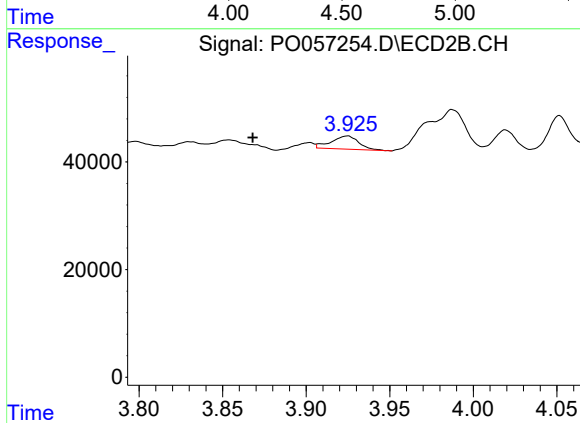
R.T.: 3.721 min
 Delta R.T.: -0.063 min
 Response: 113094
 Conc: 223.00 ng/ml



#9 AR-1221-2

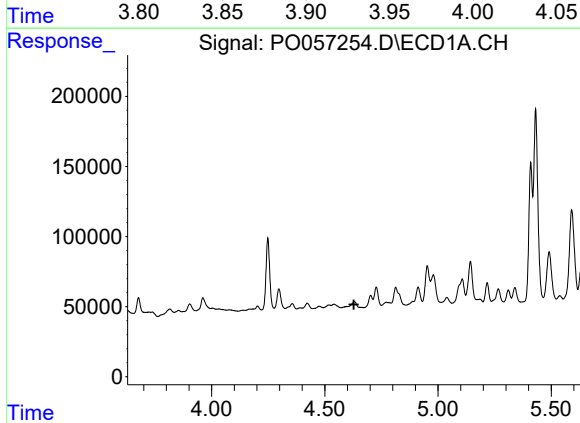
R.T.: 0.000 min
 Exp R.T. : 4.553 min
 Response: 0
 Conc: N.D.

Instrument :
 ECD_O
 ClientSampleId :



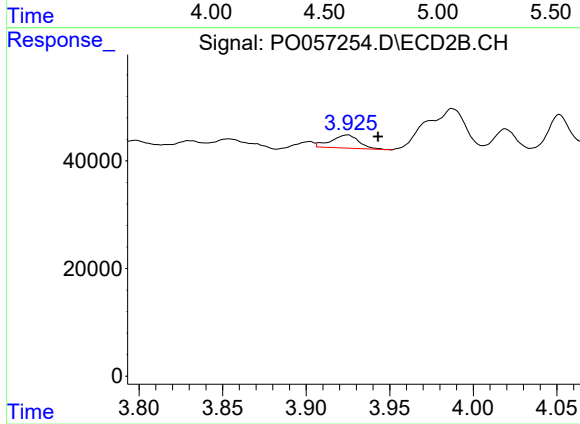
#9 AR-1221-2

R.T.: 3.925 min
 Delta R.T.: 0.057 min
 Response: 28472
 Conc: 75.55 ng/ml



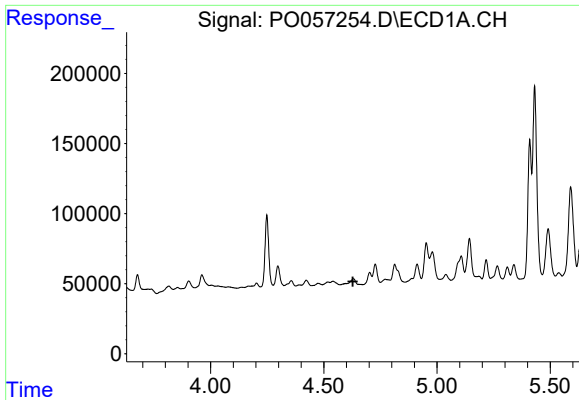
#10 AR-1221-3

R.T.: 0.000 min
 Exp R.T. : 4.628 min
 Response: 0
 Conc: N.D.



#10 AR-1221-3

R.T.: 3.925 min
 Delta R.T.: -0.018 min
 Response: 28472
 Conc: 23.78 ng/ml

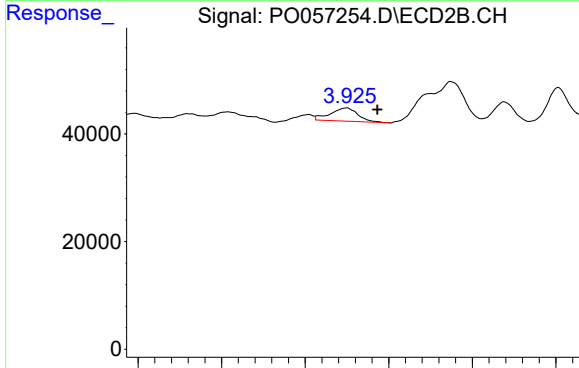


#11 AR-1232-1

R.T.: 0.000 min
 Exp R.T.: 4.629 min
 Response: 0
 Conc: N.D.

Instrument :
 ECD_O
 ClientSampled :

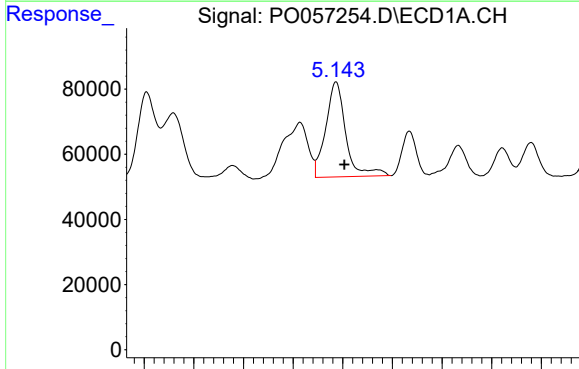
Time



#11 AR-1232-1

R.T.: 3.925 min
 Delta R.T.: -0.018 min
 Response: 28472
 Conc: 31.69 ng/ml

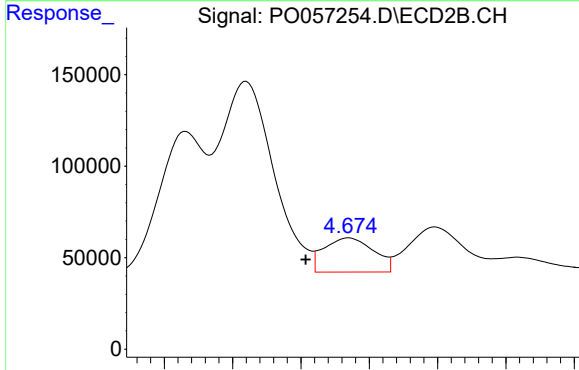
Time



#12 AR-1232-2

R.T.: 5.143 min
 Delta R.T.: -0.009 min
 Response: 409962
 Conc: 618.31 ng/ml

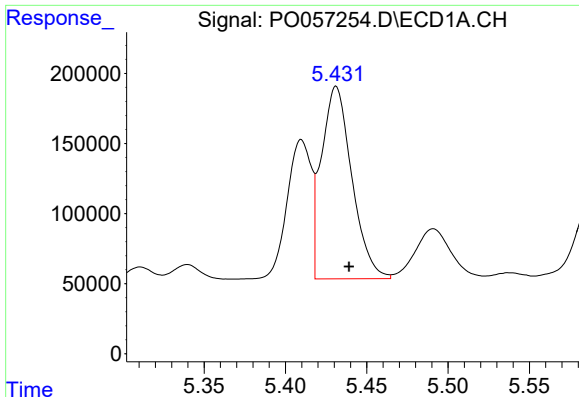
Time



#12 AR-1232-2

R.T.: 4.674 min
 Delta R.T.: 0.013 min
 Response: 189091
 Conc: 194.56 ng/ml

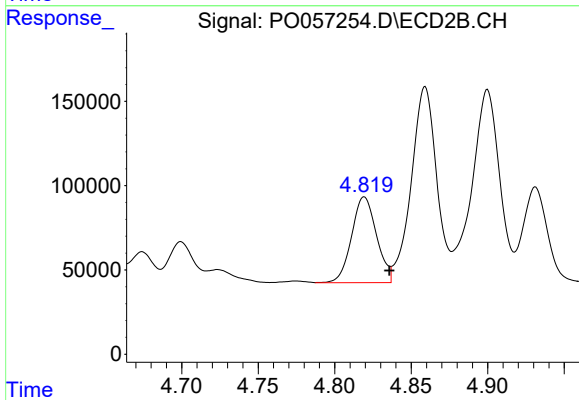
Time



#13 AR-1232-3

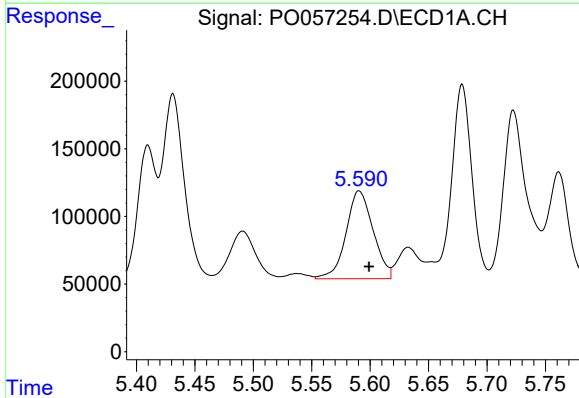
R.T.: 5.431 min
 Delta R.T.: -0.008 min
 Response: 1791051
 Conc: 1262.50 ng/ml

Instrument :
 ECD_O
 ClientSampleId :



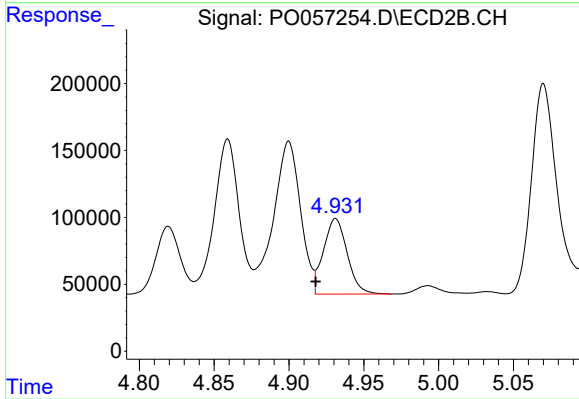
#13 AR-1232-3

R.T.: 4.819 min
 Delta R.T.: -0.016 min
 Response: 578362
 Conc: 1105.24 ng/ml



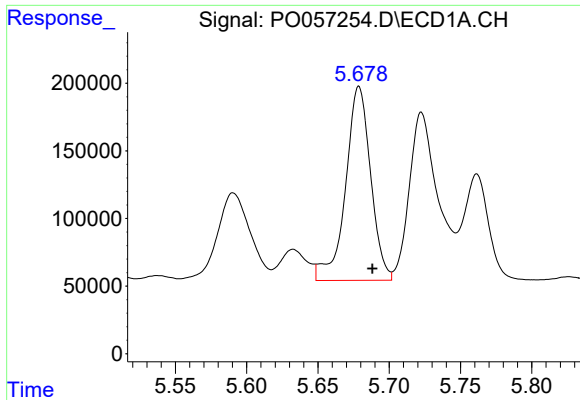
#14 AR-1232-4

R.T.: 5.591 min
 Delta R.T.: -0.008 min
 Response: 1049369
 Conc: 1490.74 ng/ml



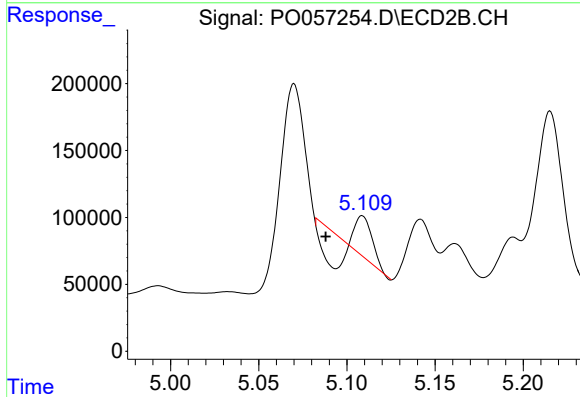
#14 AR-1232-4

R.T.: 4.931 min
 Delta R.T.: 0.013 min
 Response: 624072
 Conc: 1266.67 ng/ml

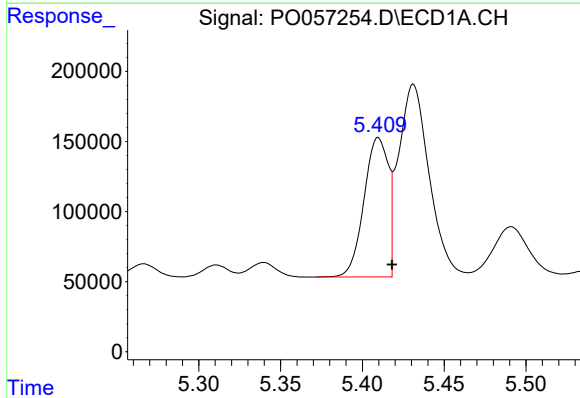


#15 AR-1232-5
 R.T.: 5.679 min
 Delta R.T.: -0.009 min
 Response: 1760393
 Conc: 3113.60 ng/ml

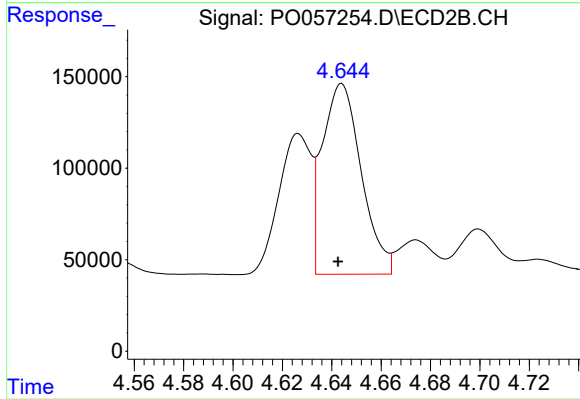
Instrument :
 ECD_O
 ClientSampleId :



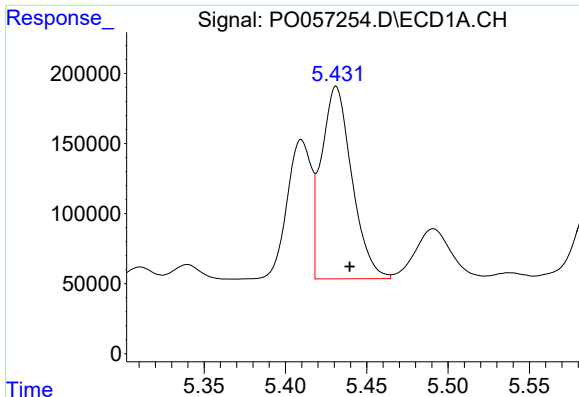
#15 AR-1232-5
 R.T.: 5.109 min
 Delta R.T.: 0.021 min
 Response: 70537
 Conc: 125.23 ng/ml



#16 AR-1242-1
 R.T.: 5.410 min
 Delta R.T.: -0.008 min
 Response: 1023903
 Conc: 593.50 ng/ml



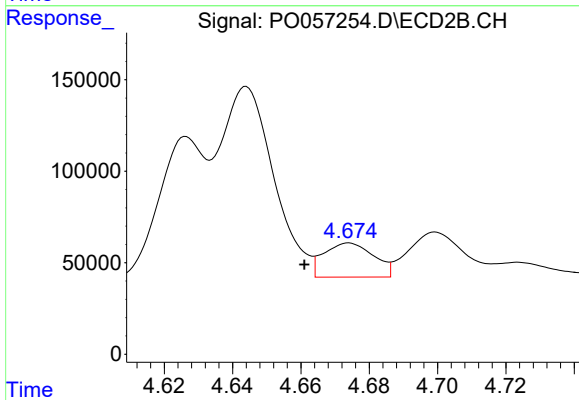
#16 AR-1242-1
 R.T.: 4.644 min
 Delta R.T.: 0.002 min
 Response: 1140575
 Conc: 920.87 ng/ml



#17 AR-1242-2

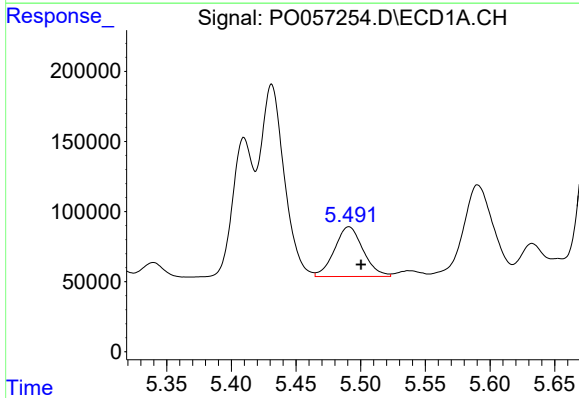
R.T.: 5.431 min
 Delta R.T.: -0.008 min
 Response: 1791051
 Conc: 705.48 ng/ml

Instrument :
 ECD_O
 ClientSampled :



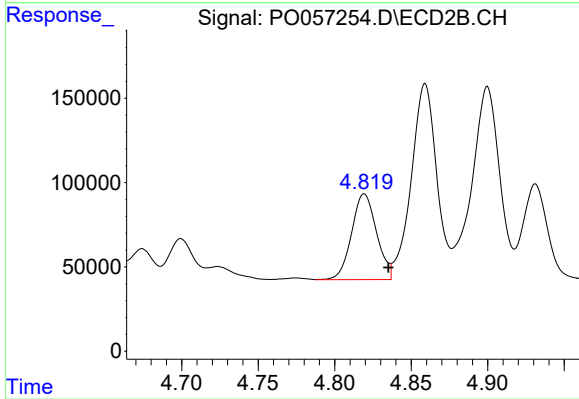
#17 AR-1242-2

R.T.: 4.674 min
 Delta R.T.: 0.013 min
 Response: 189091
 Conc: 105.14 ng/ml



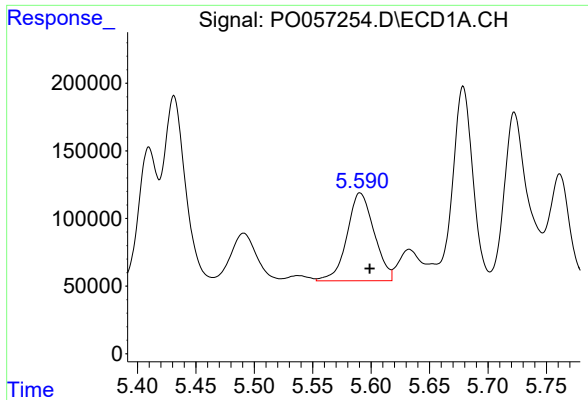
#18 AR-1242-3

R.T.: 5.491 min
 Delta R.T.: -0.010 min
 Response: 546860
 Conc: 336.32 ng/ml



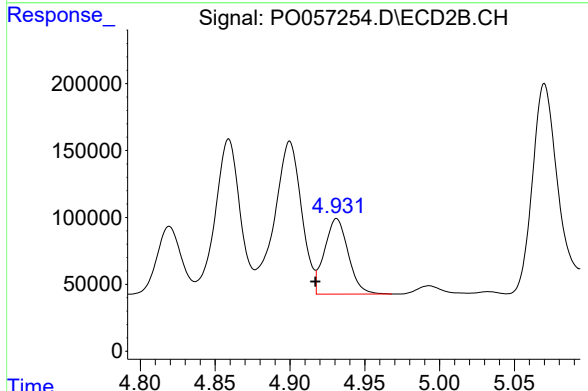
#18 AR-1242-3

R.T.: 4.819 min
 Delta R.T.: -0.016 min
 Response: 578362
 Conc: 588.30 ng/ml

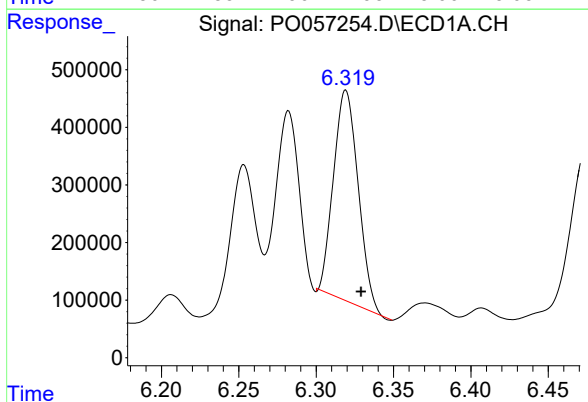


#19 AR-1242-4
 R.T.: 5.591 min
 Delta R.T.: -0.008 min
 Response: 1049369
 Conc: 785.03 ng/ml

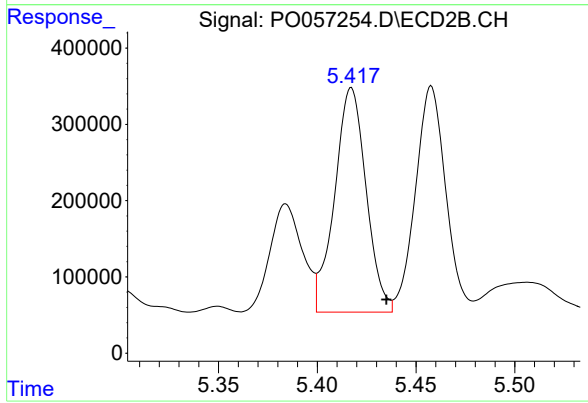
Instrument :
 ECD_O
 ClientSampled :



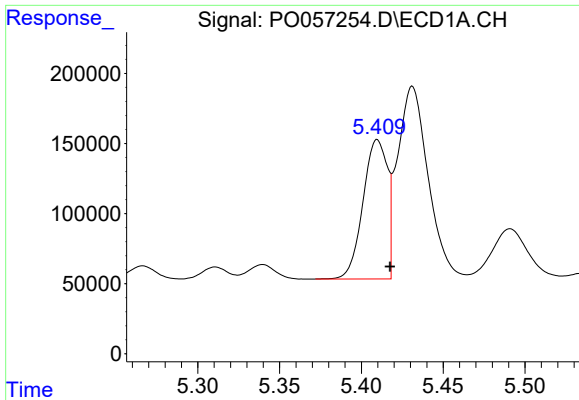
#19 AR-1242-4
 R.T.: 4.931 min
 Delta R.T.: 0.014 min
 Response: 624072
 Conc: 641.33 ng/ml



#20 AR-1242-5
 R.T.: 6.319 min
 Delta R.T.: -0.010 min
 Response: 4052433
 Conc: 2455.92 ng/ml



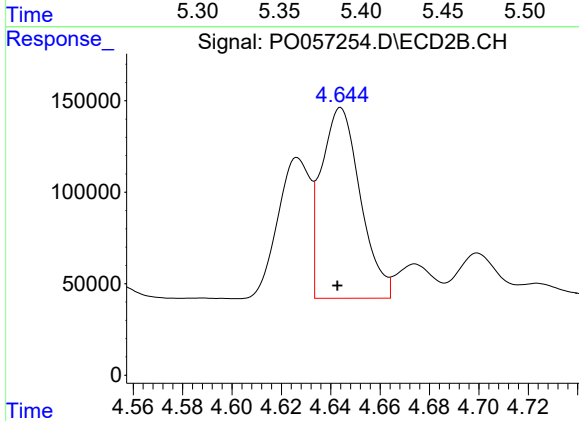
#20 AR-1242-5
 R.T.: 5.417 min
 Delta R.T.: -0.018 min
 Response: 3266182
 Conc: 2762.63 ng/ml



#21 AR-1248-1

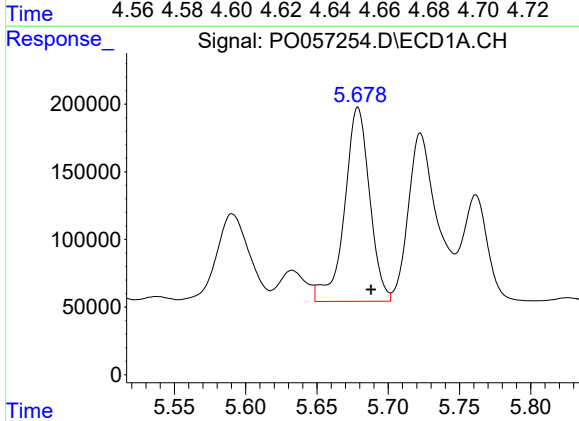
R.T.: 5.410 min
 Delta R.T.: -0.008 min
 Response: 1023903
 Conc: 794.64 ng/ml

Instrument :
 ECD_O
 ClientSampled :



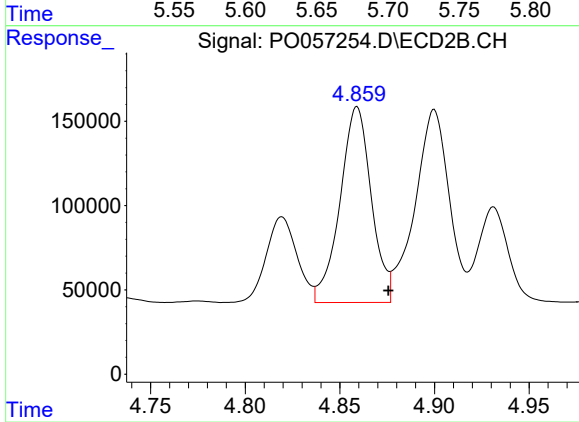
#21 AR-1248-1

R.T.: 4.644 min
 Delta R.T.: 0.001 min
 Response: 1140575
 Conc: 1217.89 ng/ml



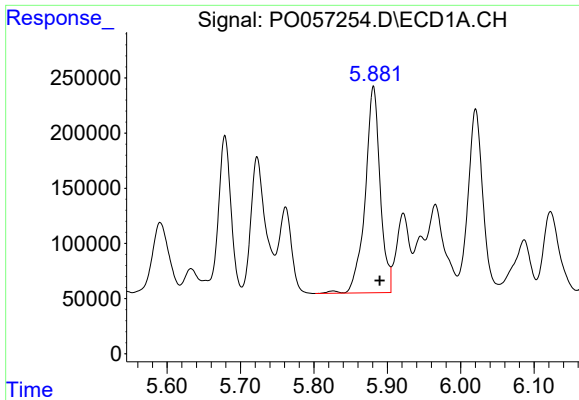
#22 AR-1248-2

R.T.: 5.679 min
 Delta R.T.: -0.009 min
 Response: 1760393
 Conc: 944.98 ng/ml



#22 AR-1248-2

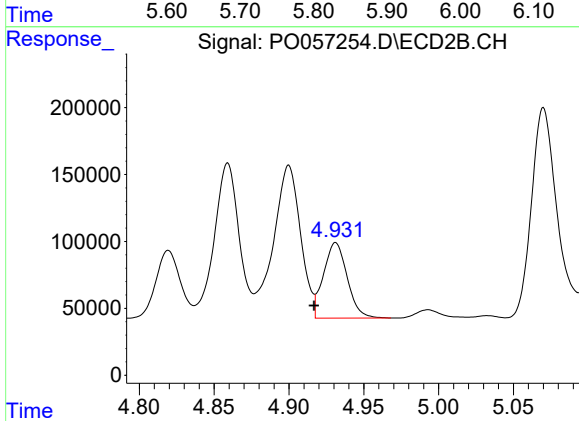
R.T.: 4.859 min
 Delta R.T.: -0.016 min
 Response: 1338795
 Conc: 1053.80 ng/ml



#23 AR-1248-3

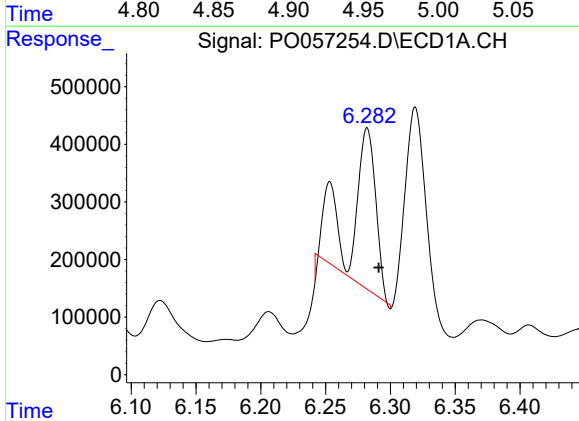
R.T.: 5.881 min
Delta R.T.: -0.009 min
Response: 2644522
Conc: 1289.16 ng/ml

Instrument :
ECD_O
ClientSampled :



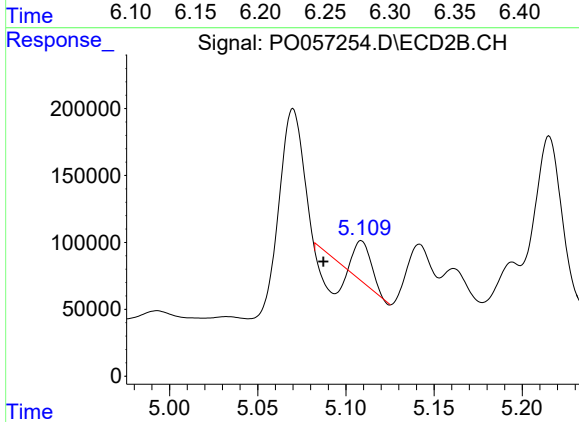
#23 AR-1248-3

R.T.: 4.931 min
Delta R.T.: 0.014 min
Response: 624072
Conc: 477.89 ng/ml



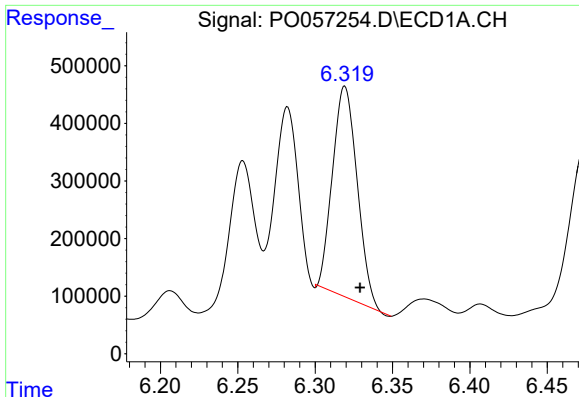
#24 AR-1248-4

R.T.: 6.282 min
Delta R.T.: -0.009 min
Response: 3023858
Conc: 1306.94 ng/ml



#24 AR-1248-4

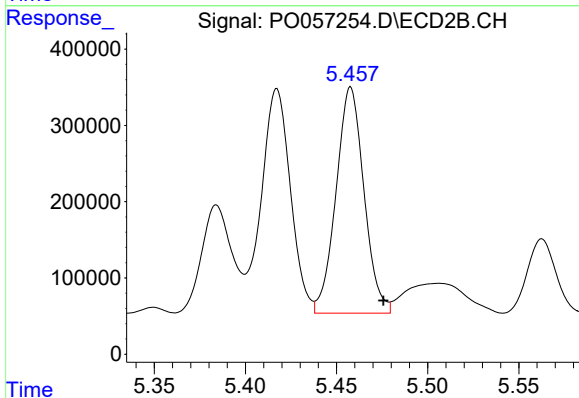
R.T.: 5.109 min
Delta R.T.: 0.022 min
Response: 70537
Conc: 44.54 ng/ml



#25 AR-1248-5

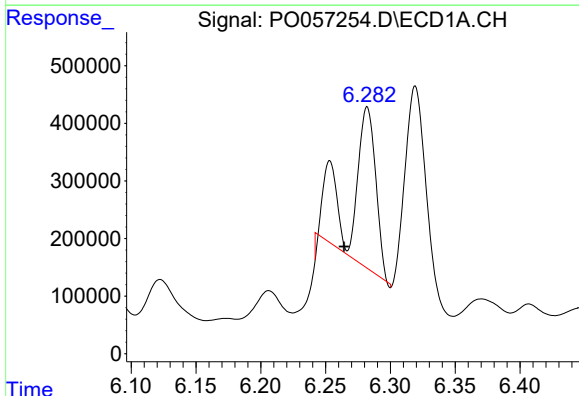
R.T.: 6.319 min
 Delta R.T.: -0.010 min
 Response: 4052433
 Conc: 1842.53 ng/ml

Instrument :
 ECD_O
 ClientSampleId :



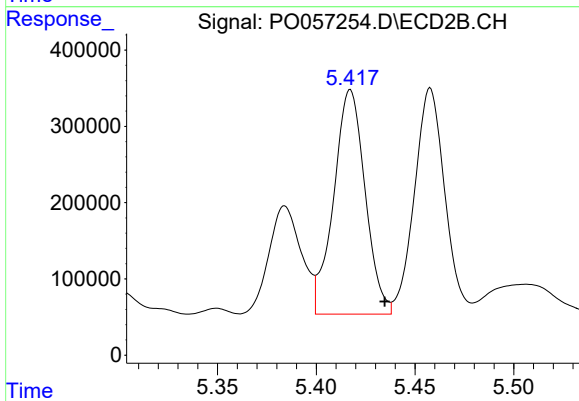
#25 AR-1248-5

R.T.: 5.458 min
 Delta R.T.: -0.018 min
 Response: 3165145
 Conc: 1912.39 ng/ml



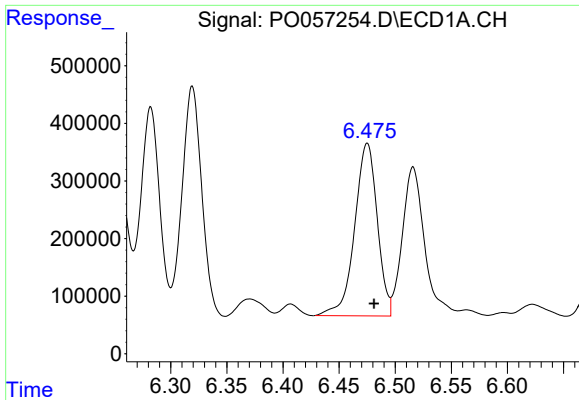
#26 AR-1254-1

R.T.: 6.282 min
 Delta R.T.: 0.018 min
 Response: 3023858
 Conc: 1098.49 ng/ml



#26 AR-1254-1

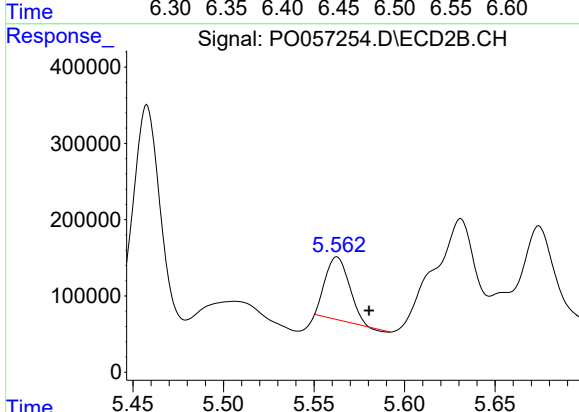
R.T.: 5.417 min
 Delta R.T.: -0.017 min
 Response: 3266182
 Conc: 1234.98 ng/ml



#27 AR-1254-2

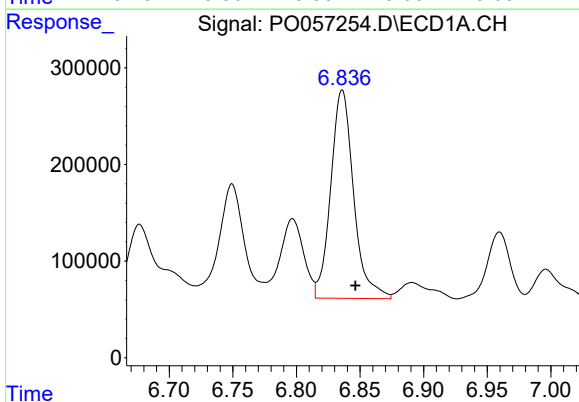
R.T.: 6.475 min
 Delta R.T.: -0.006 min
 Response: 4204096
 Conc: 1082.39 ng/ml

Instrument :
 ECD_O
 ClientSampleId :



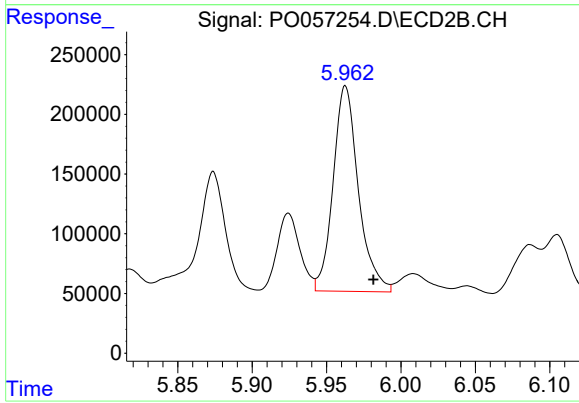
#27 AR-1254-2

R.T.: 5.563 min
 Delta R.T.: -0.018 min
 Response: 753102
 Conc: 349.34 ng/ml



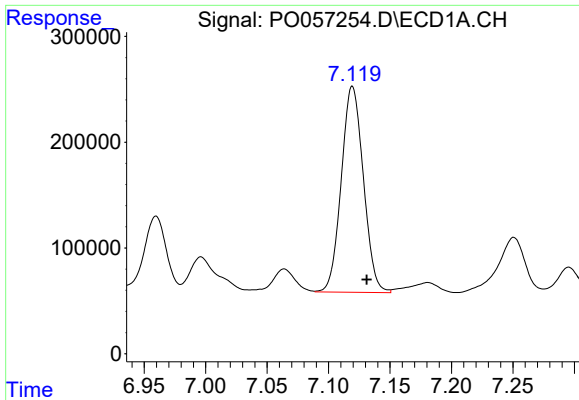
#28 AR-1254-3

R.T.: 6.836 min
 Delta R.T.: -0.010 min
 Response: 2702420
 Conc: 655.39 ng/ml



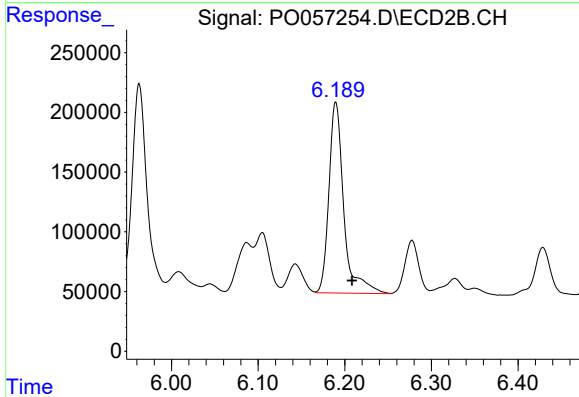
#28 AR-1254-3

R.T.: 5.963 min
 Delta R.T.: -0.019 min
 Response: 2033871
 Conc: 555.54 ng/ml

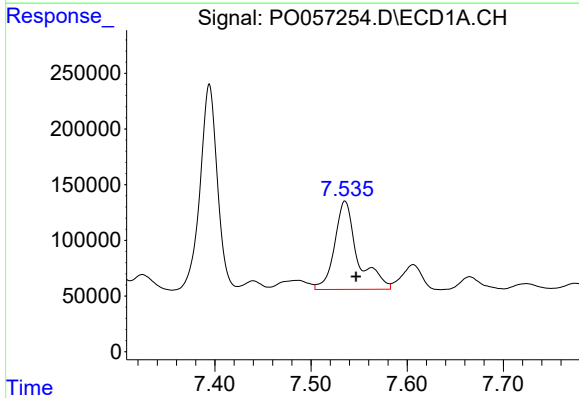


#29 AR-1254-4
 R.T.: 7.120 min
 Delta R.T.: -0.012 min
 Response: 2435976
 Conc: 809.34 ng/ml

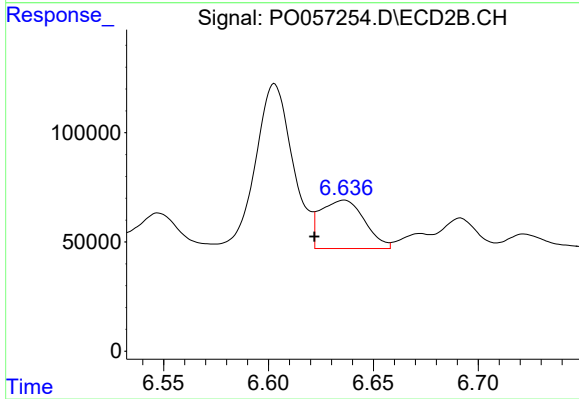
Instrument :
 ECD_O
 ClientSampled :



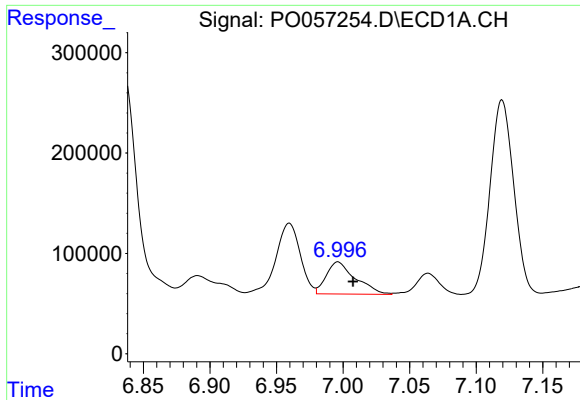
#29 AR-1254-4
 R.T.: 6.190 min
 Delta R.T.: -0.019 min
 Response: 1906392
 Conc: 867.75 ng/ml



#30 AR-1254-5
 R.T.: 7.535 min
 Delta R.T.: -0.012 min
 Response: 1318851
 Conc: 350.23 ng/ml

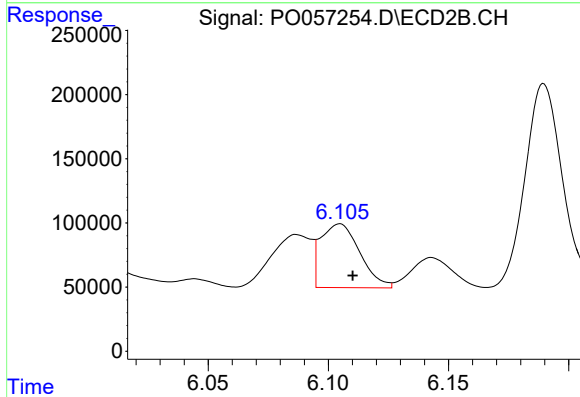


#30 AR-1254-5
 R.T.: 6.636 min
 Delta R.T.: 0.014 min
 Response: 323802
 Conc: 102.14 ng/ml

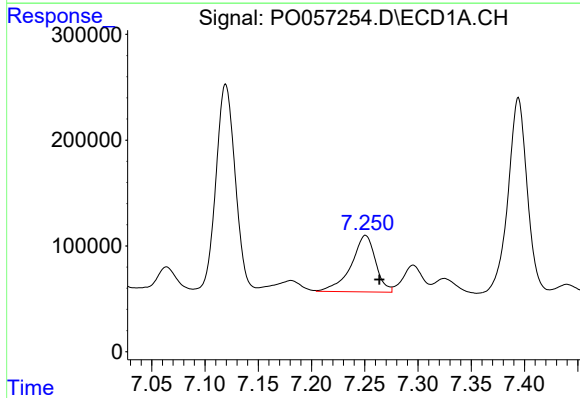


#31 AR-1260-1
 R.T.: 6.996 min
 Delta R.T.: -0.011 min
 Response: 486949
 Conc: 189.76 ng/ml

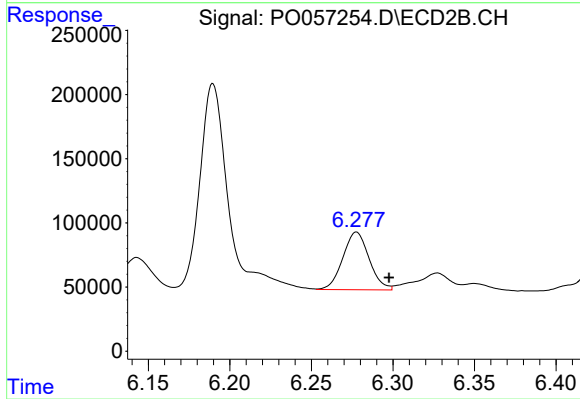
Instrument :
 ECD_O
 ClientSampled :



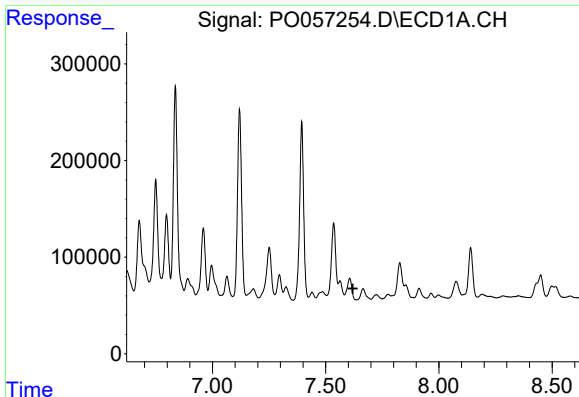
#31 AR-1260-1
 R.T.: 6.105 min
 Delta R.T.: -0.005 min
 Response: 563989
 Conc: 281.94 ng/ml



#32 AR-1260-2
 R.T.: 7.251 min
 Delta R.T.: -0.013 min
 Response: 853538
 Conc: 282.24 ng/ml



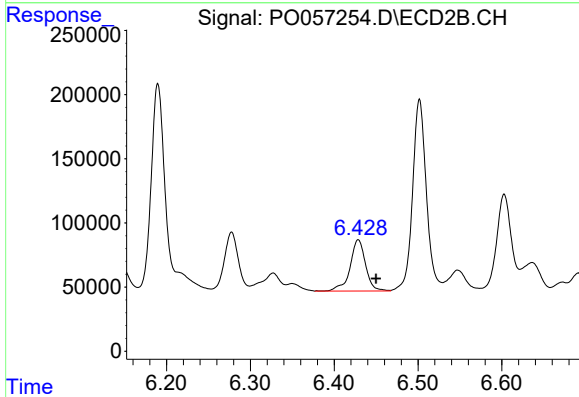
#32 AR-1260-2
 R.T.: 6.278 min
 Delta R.T.: -0.020 min
 Response: 504647
 Conc: 204.73 ng/ml



#33 AR-1260-3

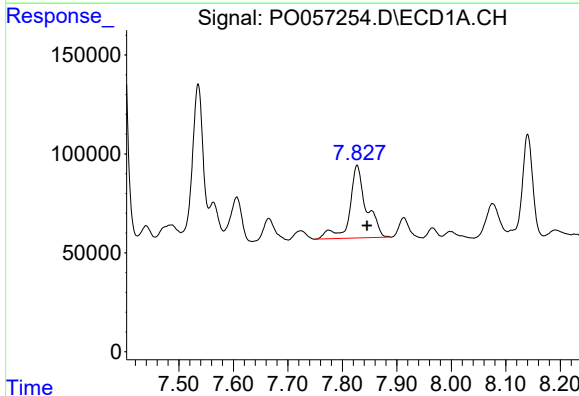
R.T.: 0.000 min
 Exp R.T.: 7.620 min
 Response: 0
 Conc: N.D.

Instrument :
 ECD_O
 ClientSampled :



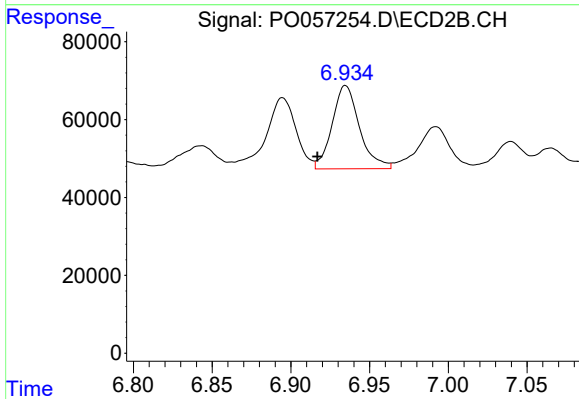
#33 AR-1260-3

R.T.: 6.429 min
 Delta R.T.: -0.021 min
 Response: 515027
 Conc: 229.59 ng/ml



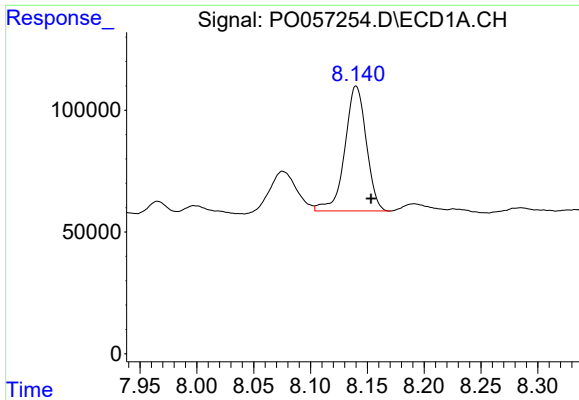
#34 AR-1260-4

R.T.: 7.827 min
 Delta R.T.: -0.018 min
 Response: 781150
 Conc: 298.24 ng/ml



#34 AR-1260-4

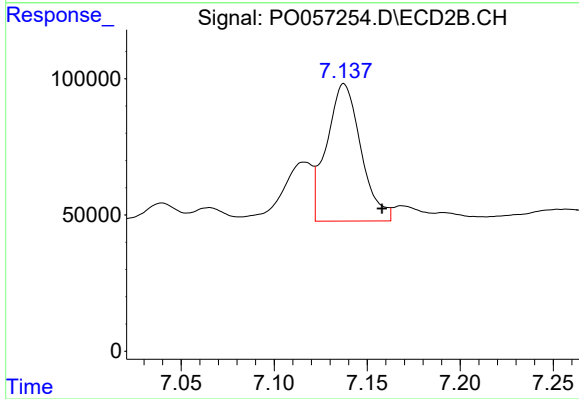
R.T.: 6.935 min
 Delta R.T.: 0.018 min
 Response: 259183
 Conc: 139.27 ng/ml



#35 AR-1260-5

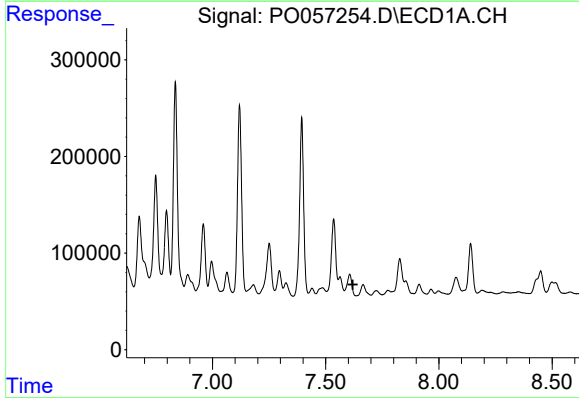
R.T.: 8.140 min
 Delta R.T.: -0.013 min
 Response: 674332
 Conc: 141.01 ng/ml

Instrument :
 ECD_O
 ClientSampled :



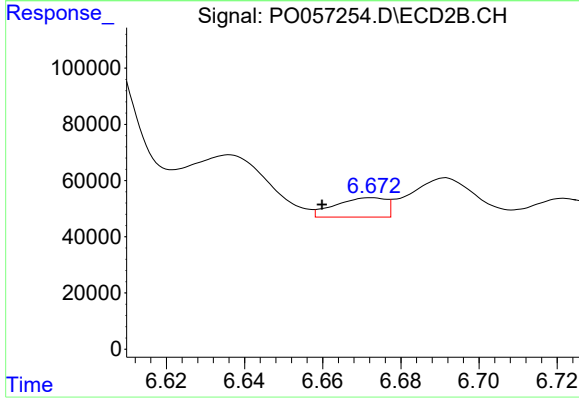
#35 AR-1260-5

R.T.: 7.138 min
 Delta R.T.: -0.021 min
 Response: 645961
 Conc: 149.79 ng/ml



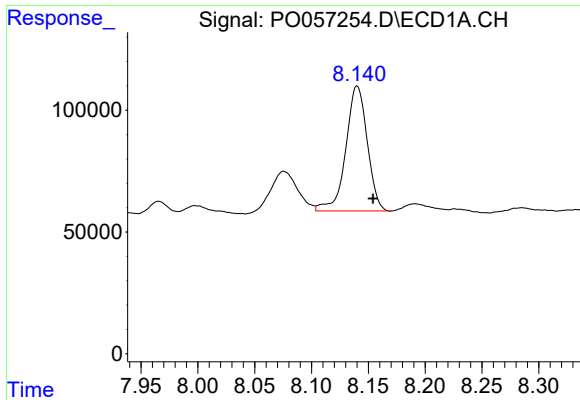
#36 AR-1262-1

R.T.: 0.000 min
 Exp R.T. : 7.620 min
 Response: 0
 Conc: N.D.



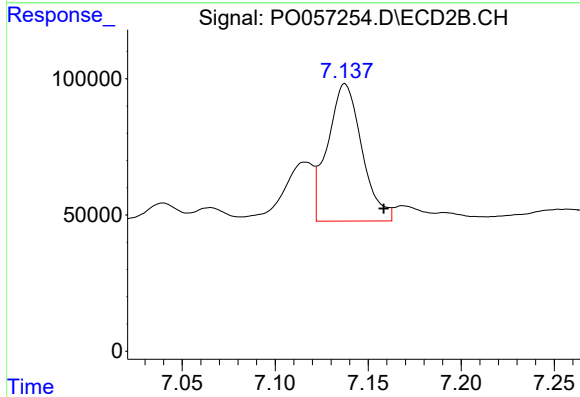
#36 AR-1262-1

R.T.: 6.672 min
 Delta R.T.: 0.013 min
 Response: 62167
 Conc: 14.89 ng/ml

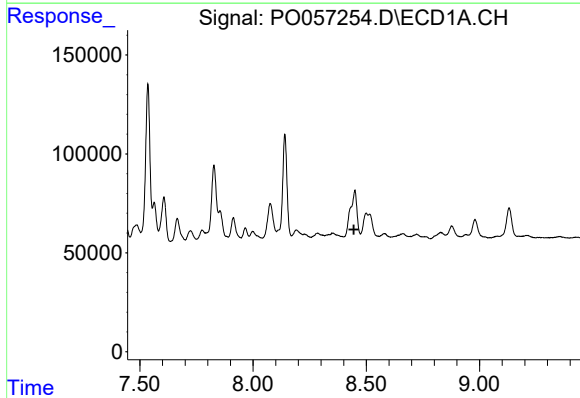


#37 AR-1262-2
 R.T.: 8.140 min
 Delta R.T.: -0.014 min
 Response: 674332
 Conc: 88.45 ng/ml

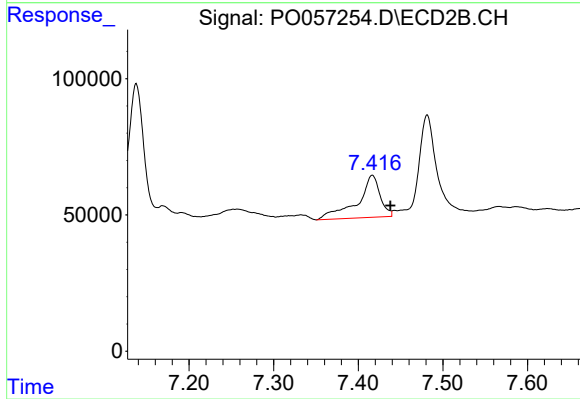
Instrument :
 ECD_O
 ClientSampleId :



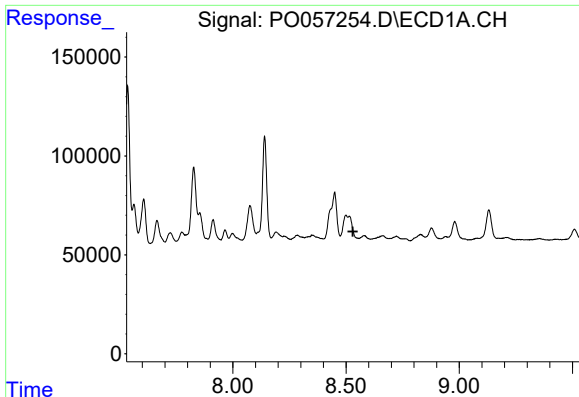
#37 AR-1262-2
 R.T.: 7.138 min
 Delta R.T.: -0.021 min
 Response: 645961
 Conc: 94.02 ng/ml



#38 AR-1262-3
 R.T.: 0.000 min
 Exp R.T. : 8.445 min
 Response: 0
 Conc: N.D.



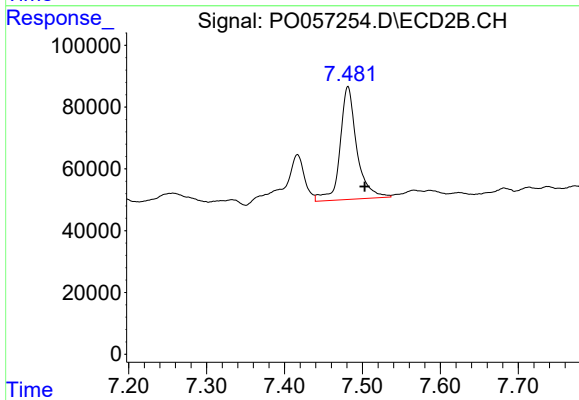
#38 AR-1262-3
 R.T.: 7.417 min
 Delta R.T.: -0.021 min
 Response: 287884
 Conc: 97.47 ng/ml



#39 AR-1262-4

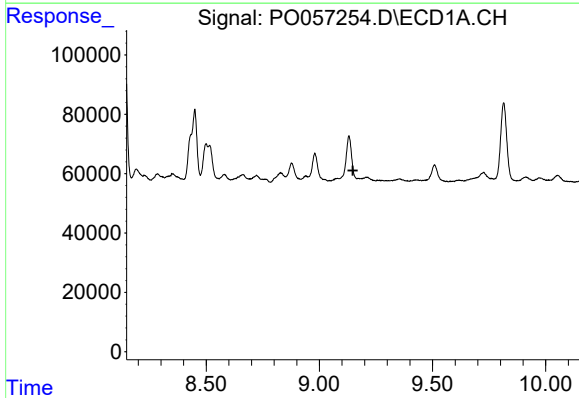
R.T.: 0.000 min
 Exp R.T. : 8.530 min
 Response: 0
 Conc: N.D.

Instrument :
 ECD_O
 ClientSampleId :



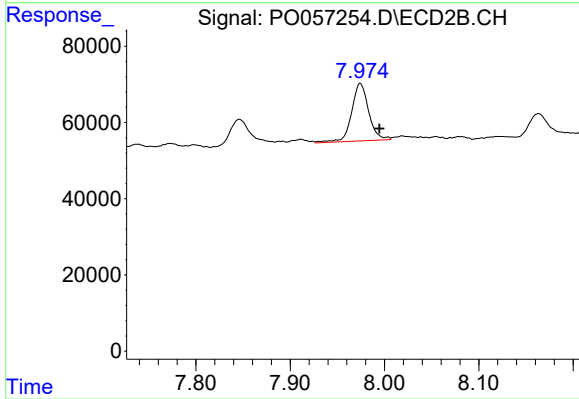
#39 AR-1262-4

R.T.: 7.481 min
 Delta R.T.: -0.022 min
 Response: 546218
 Conc: 104.83 ng/ml



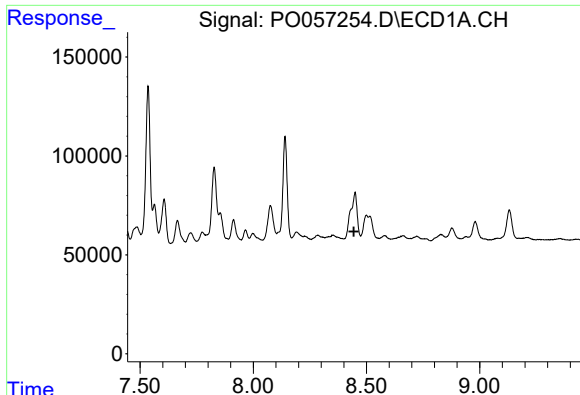
#40 AR-1262-5

R.T.: 0.000 min
 Exp R.T. : 9.148 min
 Response: 0
 Conc: N.D.



#40 AR-1262-5

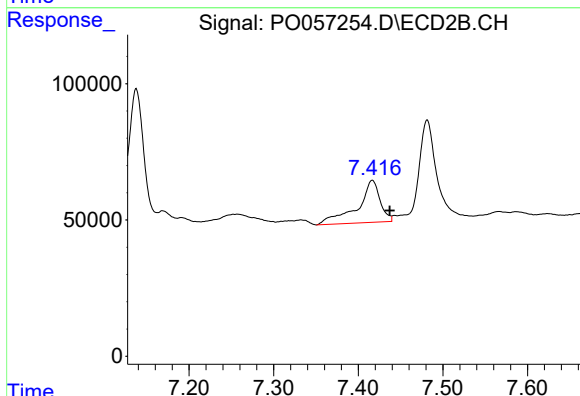
R.T.: 7.974 min
 Delta R.T.: -0.020 min
 Response: 189070
 Conc: 81.42 ng/ml



#41 AR-1268-1

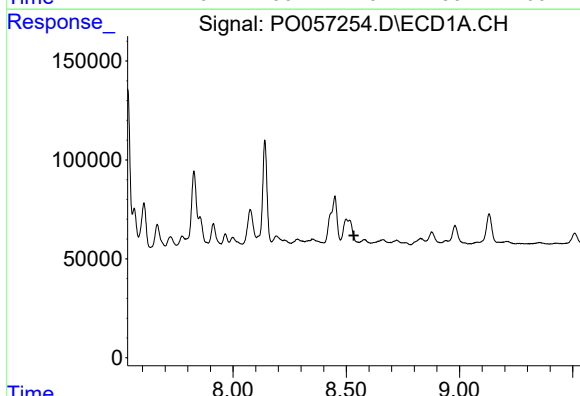
R.T.: 0.000 min
 Exp R.T. : 8.444 min
 Response: 0
 Conc: N.D.

Instrument :
 ECD_O
 ClientSampleId :



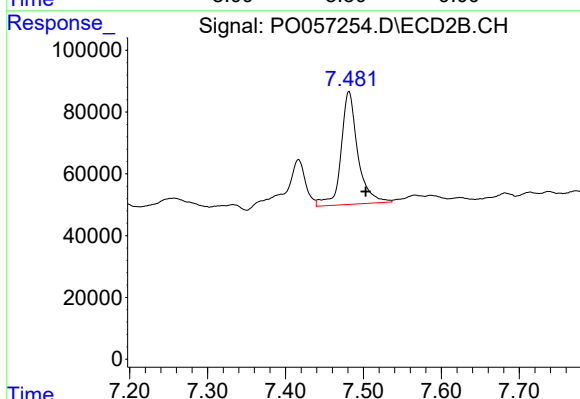
#41 AR-1268-1

R.T.: 7.417 min
 Delta R.T.: -0.021 min
 Response: 287884
 Conc: 38.56 ng/ml



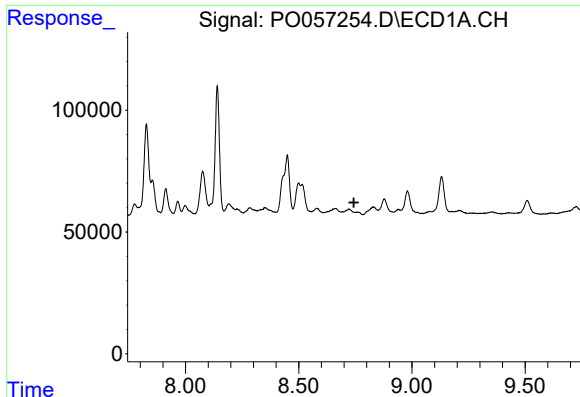
#42 AR-1268-2

R.T.: 0.000 min
 Exp R.T. : 8.534 min
 Response: 0
 Conc: N.D.



#42 AR-1268-2

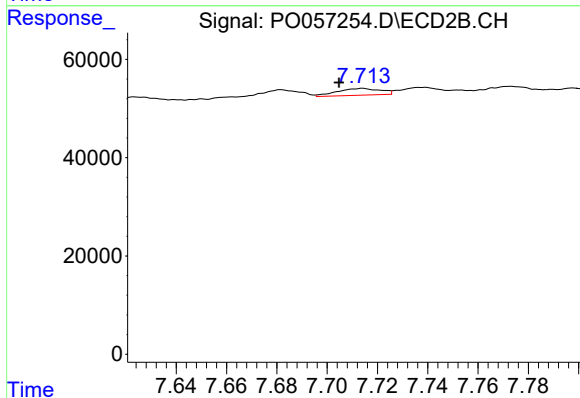
R.T.: 7.481 min
 Delta R.T.: -0.021 min
 Response: 546218
 Conc: 78.22 ng/ml



#43 AR-1268-3

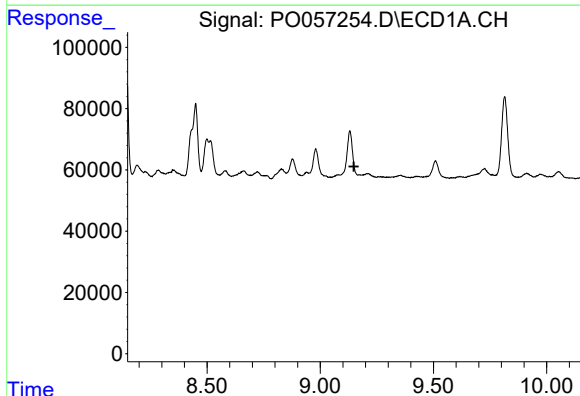
R.T.: 0.000 min
 Exp R.T. : 8.743 min
 Response: 0
 Conc: N.D.

Instrument :
 ECD_O
 ClientSampled :



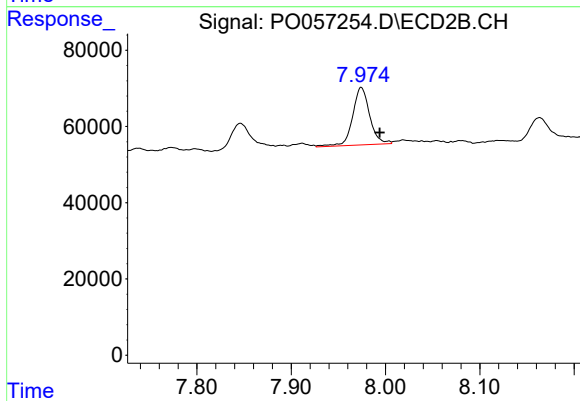
#43 AR-1268-3

R.T.: 7.714 min
 Delta R.T.: 0.009 min
 Response: 16447
 Conc: 2.77 ng/ml



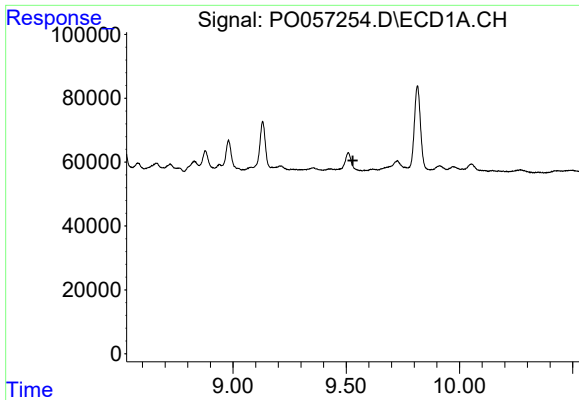
#44 AR-1268-4

R.T.: 0.000 min
 Exp R.T. : 9.148 min
 Response: 0
 Conc: N.D.



#44 AR-1268-4

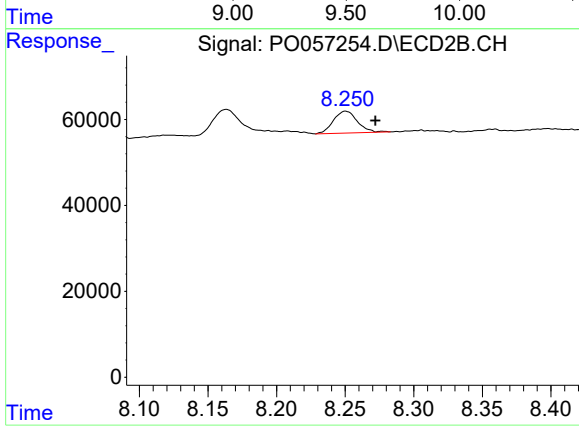
R.T.: 7.974 min
 Delta R.T.: -0.020 min
 Response: 189070
 Conc: 81.00 ng/ml



#45 AR-1268-5

R.T.: 0.000 min
 Exp R.T.: 9.529 min
 Response: 0
 Conc: N.D.

Instrument :
 ECD_O
 ClientSampleId :



#45 AR-1268-5

R.T.: 8.250 min
 Delta R.T.: -0.022 min
 Response: 62048
 Conc: 3.59 ng/ml