

Data Path : Z:\pestpcbsrv\HPCHEM1\ECD\_O\Data\PO062018\  
 Data File : PO045970.D  
 Signal(s) : Signal #1: ECD1A.CH Signal #2: ECD2B.CH  
 Acq On : 20 Jun 2018 13:04  
 Operator : SM/UA  
 Sample : J3567-03  
 Misc :  
 ALS Vial : 17 Sample Multiplier: 1

Instrument :  
 ECD\_O  
 ClientSampled :  
 TP-5-S

Integration File signal 1: autoint1.e  
 Integration File signal 2: autoint2.e  
 Quant Time: Jun 20 13:20:08 2018  
 Quant Method : Z:\pestpcbsrv\HPCHEM1\ECD\_O\methods\PO061918.M  
 Quant Title : GC EXTRACTABLES  
 QLast Update : Wed Jun 20 03:39:54 2018  
 Response via : Initial Calibration  
 Integrator: ChemStation 6890 Scale Mode: Small noise peaks clipped

Volume Inj. : 2 µl  
 Signal #1 Phase : ZB-MR1 Signal #2 Phase: ZB-MR2  
 Signal #1 Info : 30Mx0.32mmx 0.50µ Signal #2 Info : 30M x 0.32mm x 0.25µm

Compound	RT#1	RT#2	Resp#1	Resp#2	ng/ml	ng/ml
----------	------	------	--------	--------	-------	-------

-----  
 System Monitoring Compounds

1) SA Tetrachlo...	4.381	3.609	10389795	5377716	21.727	21.391
2) SA Decachlor...	10.053	8.588	7531535	2931873	17.968	18.720

Target Compounds  
 -----

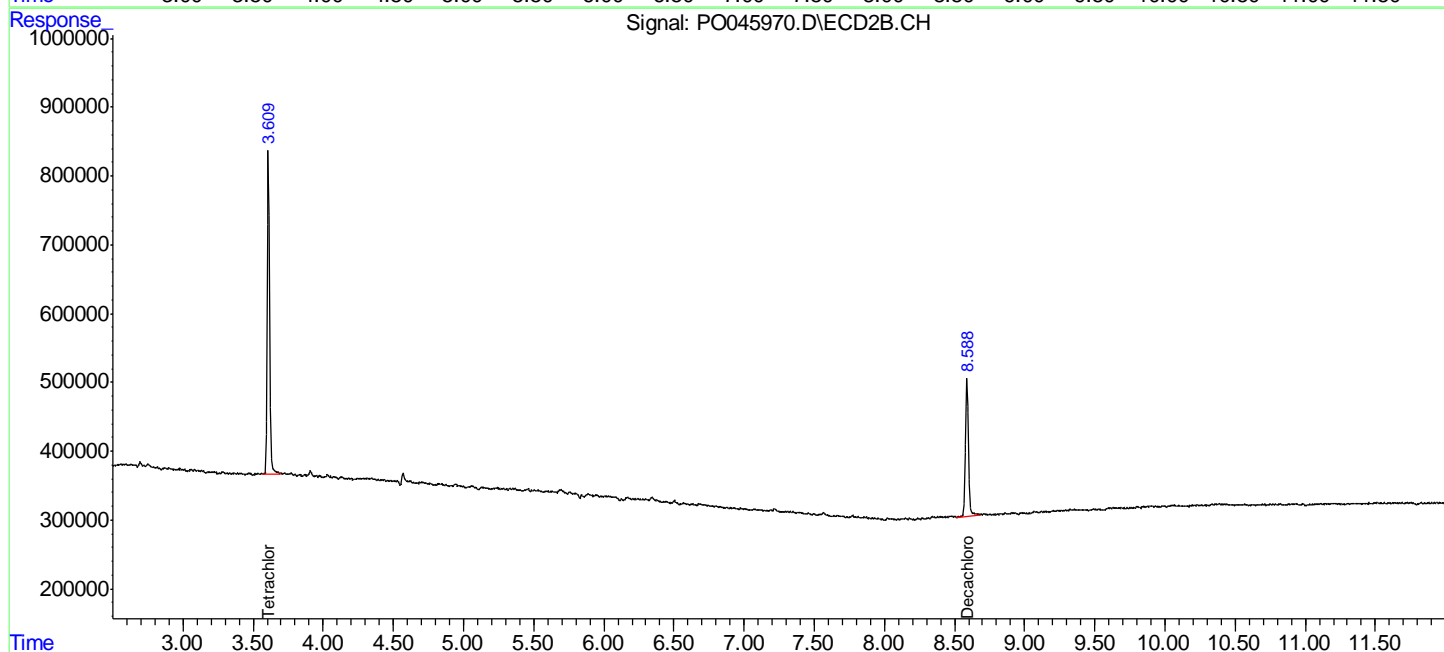
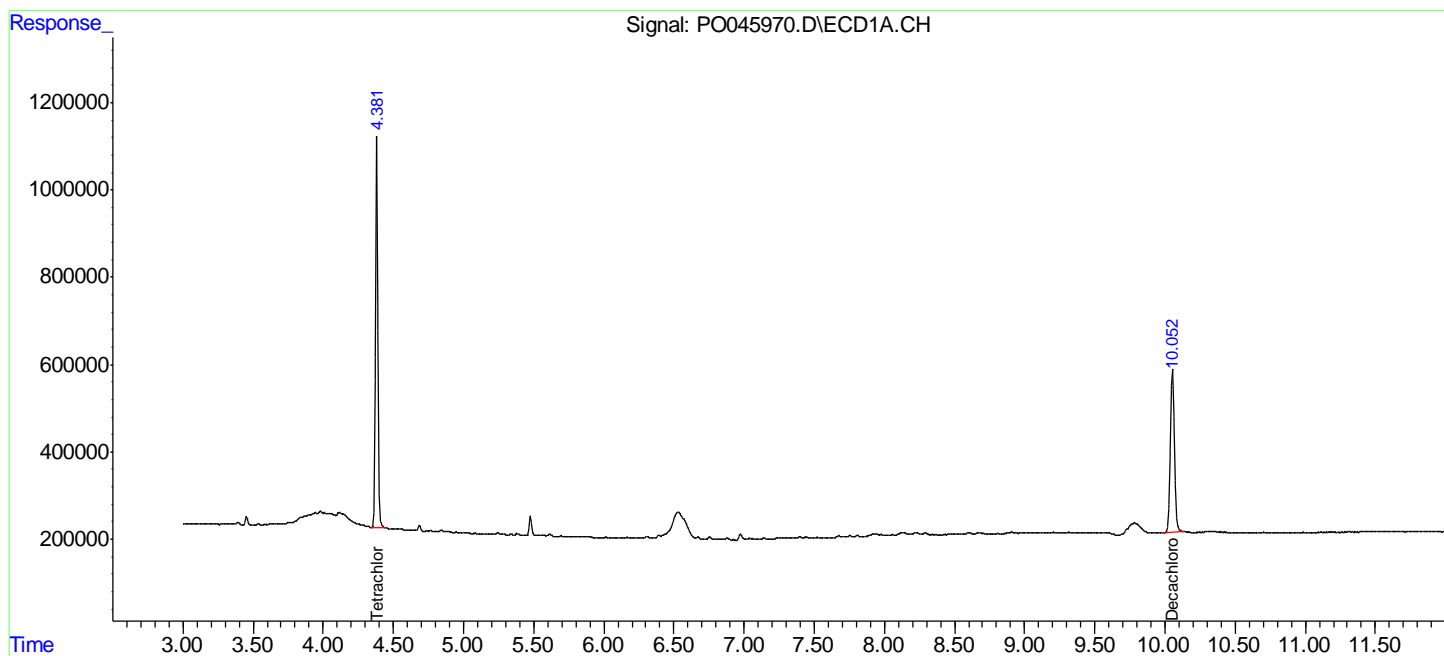
(f)=RT Delta > 1/2 Window (#)=Amounts differ by > 25% (m)=manual int.

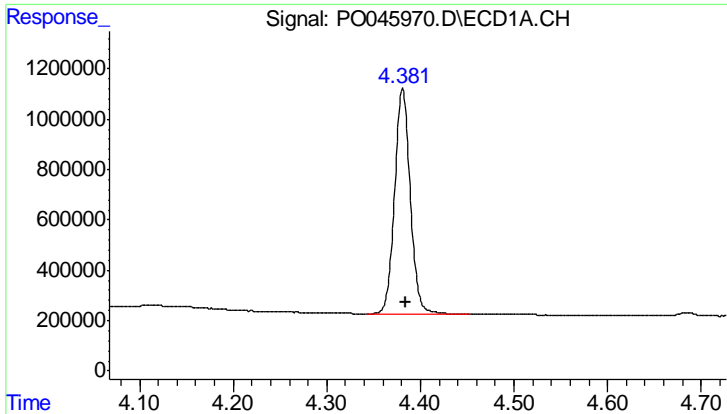
Data Path : Z:\pestpcbsrv\HPCHEM1\ECD\_O\Data\PO062018\  
 Data File : PO045970.D  
 Signal(s) : Signal #1: ECD1A.CH Signal #2: ECD2B.CH  
 Acq On : 20 Jun 2018 13:04  
 Operator : SM/UA  
 Sample : J3567-03  
 Misc :  
 ALS Vial : 17 Sample Multiplier: 1

Instrument :  
 ECD\_O  
 ClientSampled :  
 TP-5-S

Integration File signal 1: autoint1.e  
 Integration File signal 2: autoint2.e  
 Quant Time: Jun 20 13:20:08 2018  
 Quant Method : Z:\pestpcbsrv\HPCHEM1\ECD\_O\methods\PO061918.M  
 Quant Title : GC EXTRACTABLES  
 QLast Update : Wed Jun 20 03:39:54 2018  
 Response via : Initial Calibration  
 Integrator: ChemStation 6890 Scale Mode: Small noise peaks clipped

Volume Inj. : 2 µl  
 Signal #1 Phase : ZB-MR1 Signal #2 Phase: ZB-MR2  
 Signal #1 Info : 30Mx0.32mmx 0.50µ Signal #2 Info : 30M x 0.32mm x 0.25µm

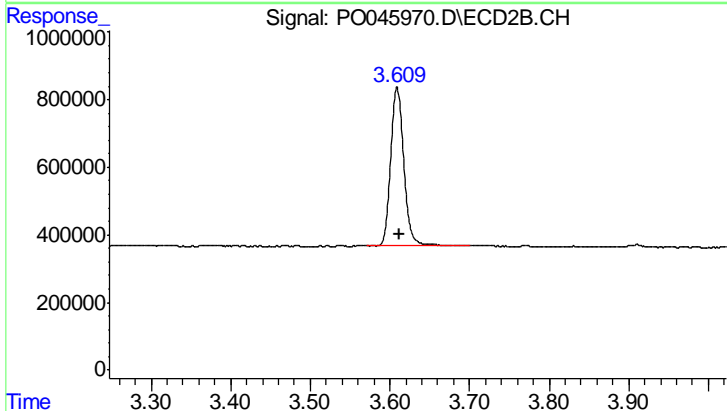




#1 Tetrachloro-m-xylene

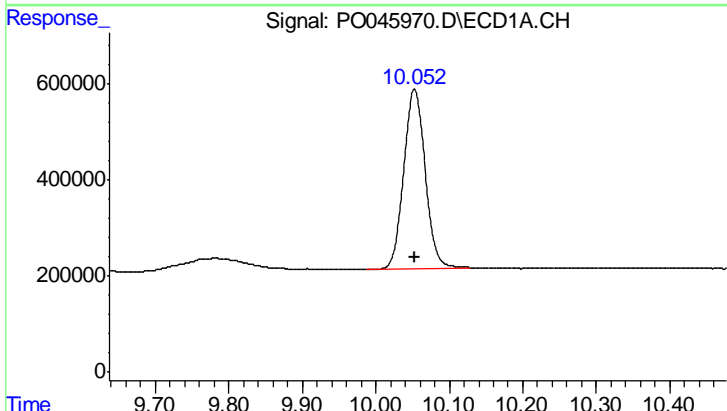
R.T.: 4.381 min  
 Delta R.T.: -0.003 min  
 Response: 10389795  
 Conc: 21.73 ng/ml

Instrument :  
 ECD\_O  
 ClientSampleId :  
 TP-5-S



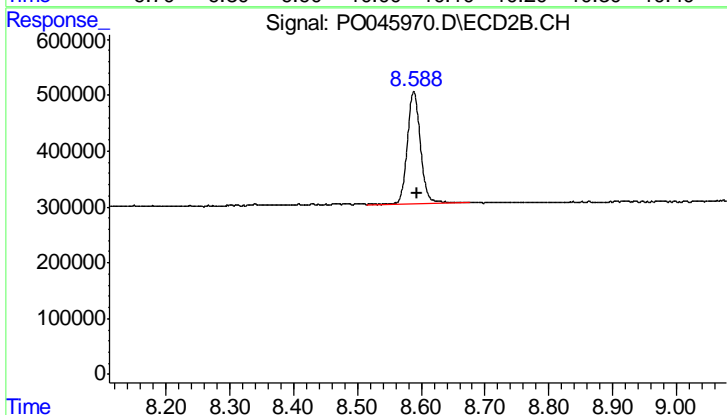
#1 Tetrachloro-m-xylene

R.T.: 3.609 min  
 Delta R.T.: -0.002 min  
 Response: 5377716  
 Conc: 21.39 ng/ml



#2 Decachlorobiphenyl

R.T.: 10.053 min  
 Delta R.T.: 0.000 min  
 Response: 7531535  
 Conc: 17.97 ng/ml



#2 Decachlorobiphenyl

R.T.: 8.588 min  
 Delta R.T.: -0.005 min  
 Response: 2931873  
 Conc: 18.72 ng/ml