

Data Path : Z:\pestpcbsrv\HPCHEM1\ECD O\Data\PO062218\  
 Data File : PO046081.D  
 Signal(s) : Signal #1: ECD1A.CH Signal #2: ECD2B.CH  
 Acq On : 22 Jun 2018 15:34  
 Operator : SM/UA  
 Sample : J3505-01MSD  
 Misc :  
 ALS Vial : 7 Sample Multiplier: 1

**Instrument :**  
 ECD\_O  
**ClientSampleId :**  
 SB-56-COMPMSD

**Manual Integrations**  
**APPROVED**  
 ugo  
 6/25/2018 3:06:48 PM

Integration File signal 1: autoint1.e  
 Integration File signal 2: autoint2.e  
 Quant Time: Jun 22 23:49:03 2018  
 Quant Method : Z:\pestpcbsrv\HPCHEM1\ECD\_O\methods\PO061918.M  
 Quant Title : GC EXTRACTABLES  
 QLast Update : Wed Jun 20 03:39:54 2018  
 Response via : Initial Calibration  
 Integrator: ChemStation 6890 Scale Mode: Small noise peaks clipped

Volume Inj. : 2 µl  
 Signal #1 Phase : ZB-MR1 Signal #2 Phase: ZB-MR2  
 Signal #1 Info : 30Mx0.32mmx 0.50µ Signal #2 Info : 30M x 0.32mm x 0.25µm

Compound	RT#1	RT#2	Resp#1	Resp#2	nq/ml	nq/ml
-----						
System Monitoring Compounds						
1) SA Tetrachlo...	4.381	3.609	11661435	5158678	24.387	20.520
2) SA Decachlor...	10.054	8.584	6557972	2428086	15.645	15.504
Target Compounds						
3) L1 AR-1016-1	5.276	4.476	514166	2157408	45.826m	316.690m#
4) L1 AR-1016-2	5.627	4.929	2423238	509922	166.154	101.372m#
5) L1 AR-1016-3	5.723	4.964	2562386	1522383	214.905	247.815m
6) L1 AR-1016-4	6.159	5.137	1324358	1693196	104.095m	255.970m#
7) L1 AR-1016-5	6.391	5.486	1969060	1015711	173.849m	157.970m
31) L7 AR-1260-1	7.138	6.163	4900450	2550356	205.071	210.308m
32) L7 AR-1260-2	7.393	6.349	5358708	2896664	186.261	196.377m
33) L7 AR-1260-3	7.674	6.677	6612965	2972216	192.142	195.249m
34) L7 AR-1260-4	8.289	7.213	7362767	3731637	153.544	168.579
35) L7 AR-1260-5	8.605	7.559	4784642	2872660	160.823	177.447

(f)=RT Delta > 1/2 Window (#)=Amounts differ by > 25% (m)=manual int.

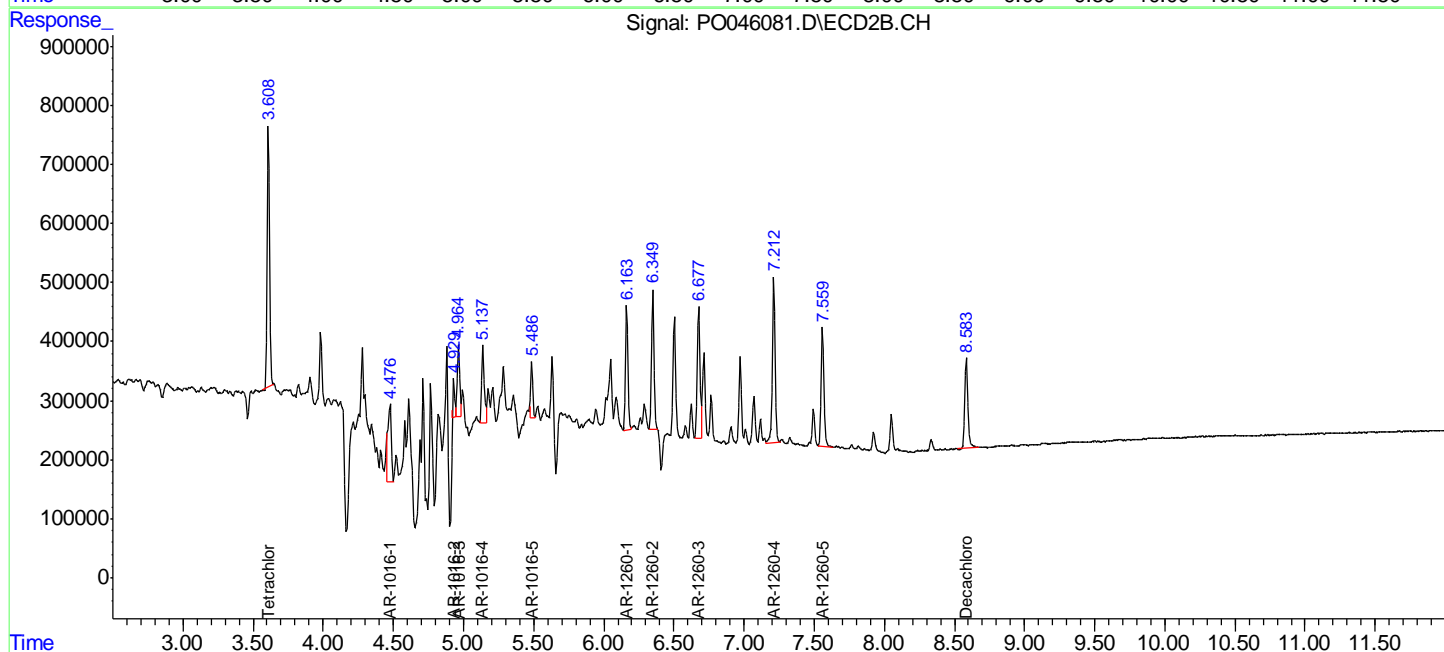
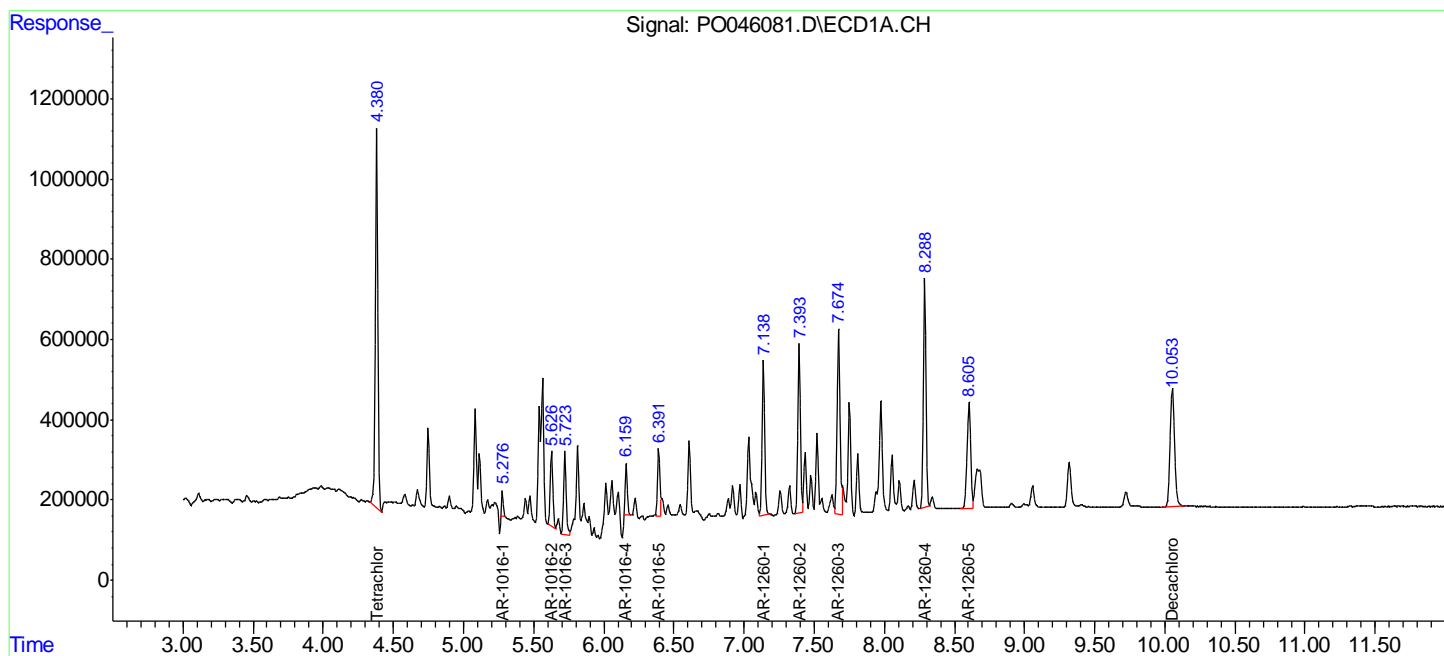
Data Path : Z:\pestpcbsrv\HPCHEM1\ECD O\Data\PO062218\  
 Data File : PO046081.D  
 Signal(s) : Signal #1: ECD1A.CH Signal #2: ECD2B.CH  
 Acq On : 22 Jun 2018 15:34  
 Operator : SM/UA  
 Sample : J3505-01MSD  
 Misc :  
 ALS Vial : 7 Sample Multiplier: 1

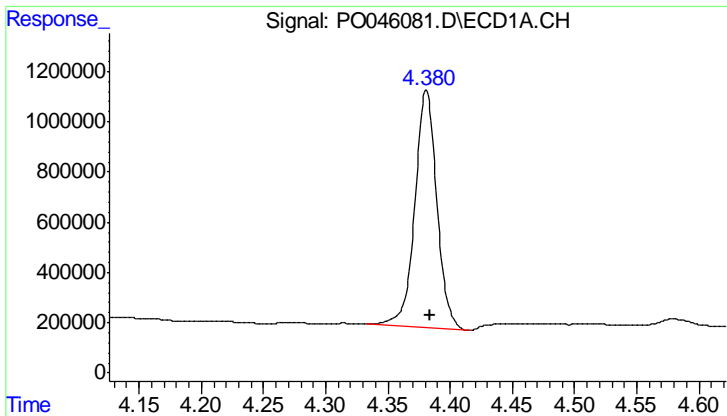
Instrument :  
 ECD\_O  
 Client Sampled :  
 SB-56-COMPMSD

Manual Integrations  
**APPROVED**  
 ugo  
 6/25/2018 3:06:48 PM

Integration File signal 1: autoint1.e  
 Integration File signal 2: autoint2.e  
 Quant Time: Jun 22 23:49:03 2018  
 Quant Method : Z:\pestpcbsrv\HPCHEM1\ECD\_O\methods\PO061918.M  
 Quant Title : GC EXTRACTABLES  
 QLast Update : Wed Jun 20 03:39:54 2018  
 Response via : Initial Calibration  
 Integrator: ChemStation 6890 Scale Mode: Small noise peaks clipped

Volume Inj. : 2 ul  
 Signal #1 Phase : ZB-MR1 Signal #2 Phase: ZB-MR2  
 Signal #1 Info : 30Mx0.32mmx 0.50µ Signal #2 Info : 30M x 0.32mm x 0.25µm





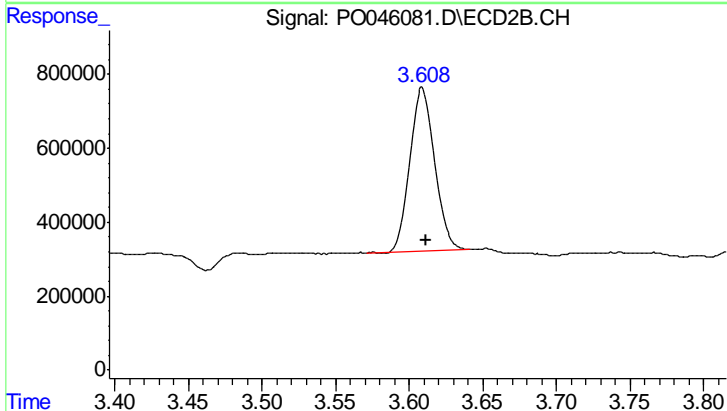
#1 Tetrachloro-m-xylene

R.T.: 4.381 min  
 Delta R.T.: -0.003 min  
 Response: 11661435  
 Conc: 24.39 ng/ml

Instrument :  
 ECD\_O  
 ClientSampled :  
 SB-56-COMPMSD

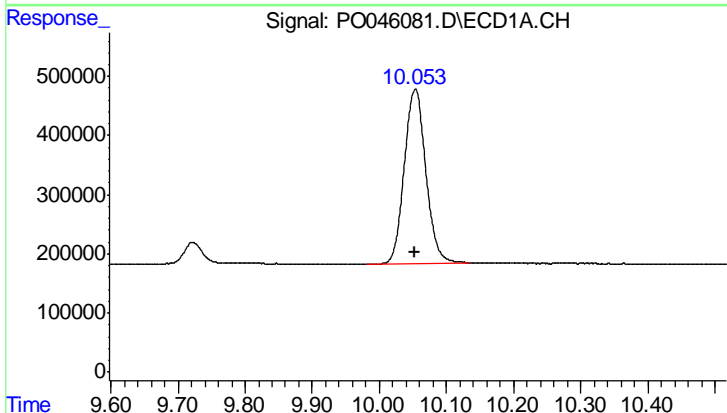
Manual Integrations  
 APPROVED

ugo  
 6/25/2018 3:06:48 PM



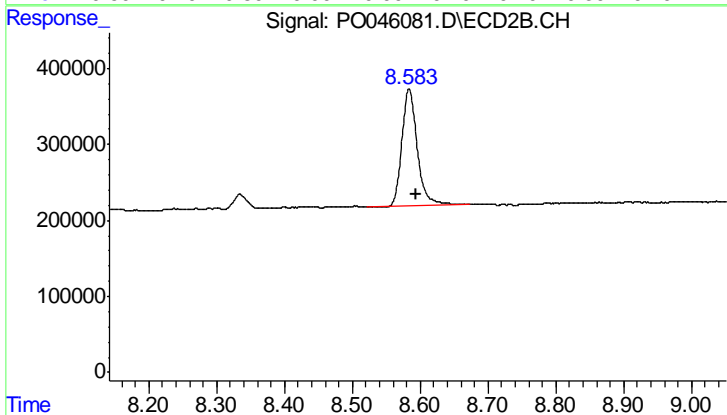
#1 Tetrachloro-m-xylene

R.T.: 3.609 min  
 Delta R.T.: -0.003 min  
 Response: 5158678  
 Conc: 20.52 ng/ml



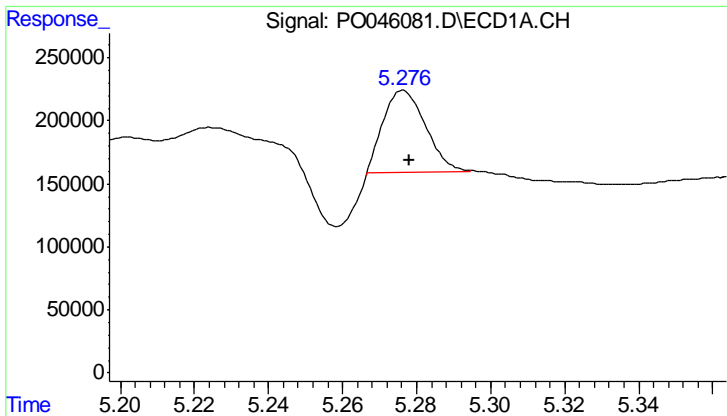
#2 Decachlorobiphenyl

R.T.: 10.054 min  
 Delta R.T.: 0.000 min  
 Response: 6557972  
 Conc: 15.65 ng/ml



#2 Decachlorobiphenyl

R.T.: 8.584 min  
 Delta R.T.: -0.010 min  
 Response: 2428086  
 Conc: 15.50 ng/ml



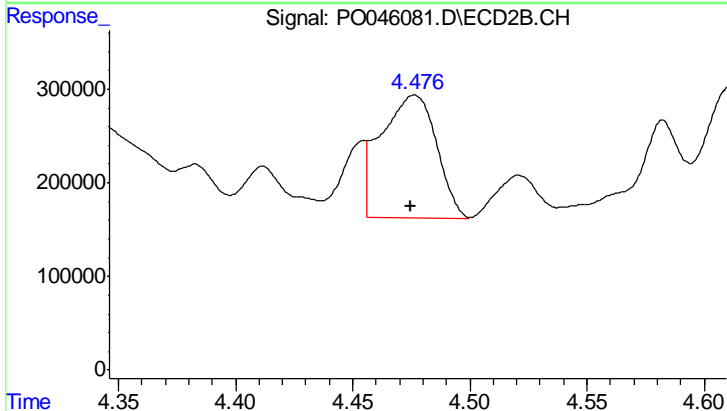
#3 AR-1016-1

R.T.: 5.276 min  
 Delta R.T.: -0.002 min  
 Response: 514166  
 Conc: 45.83 ng/ml

Instrument :  
 ECD\_O  
 ClientSampled :  
 SB-56-COMPMSD

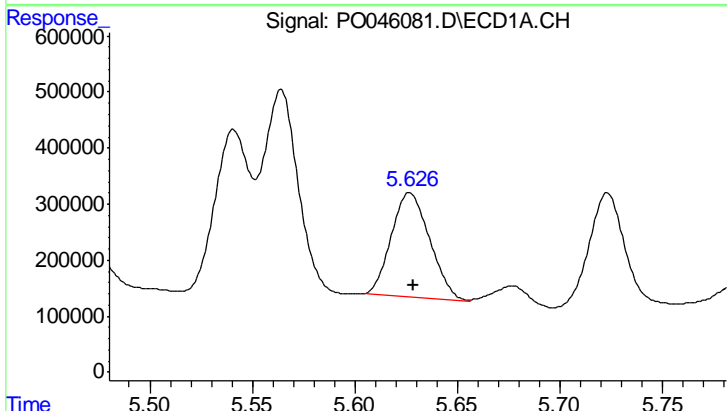
Manual Integrations  
 APPROVED

ugo  
 6/25/2018 3:06:48 PM



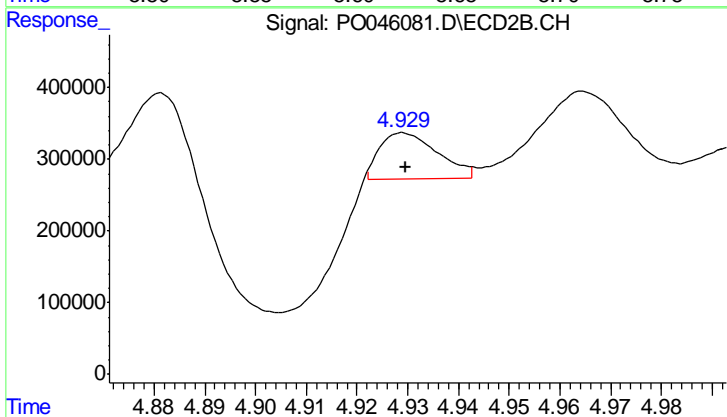
#3 AR-1016-1

R.T.: 4.476 min  
 Delta R.T.: 0.002 min  
 Response: 2157408  
 Conc: 316.69 ng/ml m



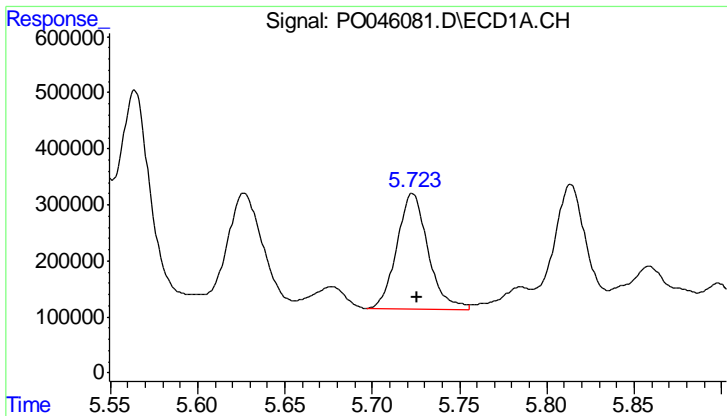
#4 AR-1016-2

R.T.: 5.627 min  
 Delta R.T.: -0.002 min  
 Response: 2423238  
 Conc: 166.15 ng/ml



#4 AR-1016-2

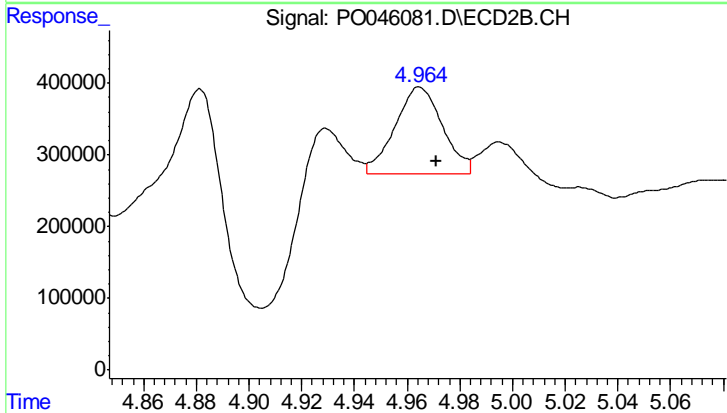
R.T.: 4.929 min  
 Delta R.T.: 0.000 min  
 Response: 509922  
 Conc: 101.37 ng/ml m



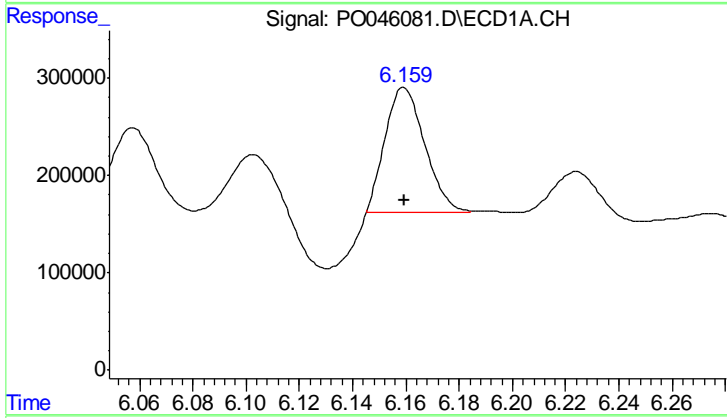
#5 AR-1016-3  
 R.T.: 5.723 min  
 Delta R.T.: -0.002 min  
 Response: 2562386  
 Conc: 214.90 ng/ml

**Instrument :**  
 ECD\_O  
**ClientSampled :**  
 SB-56-COMPMSD

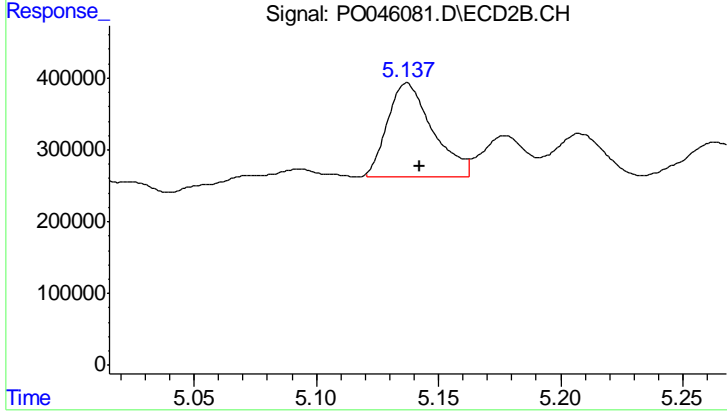
**Manual Integrations**  
**APPROVED**  
 ugo  
 6/25/2018 3:06:48 PM



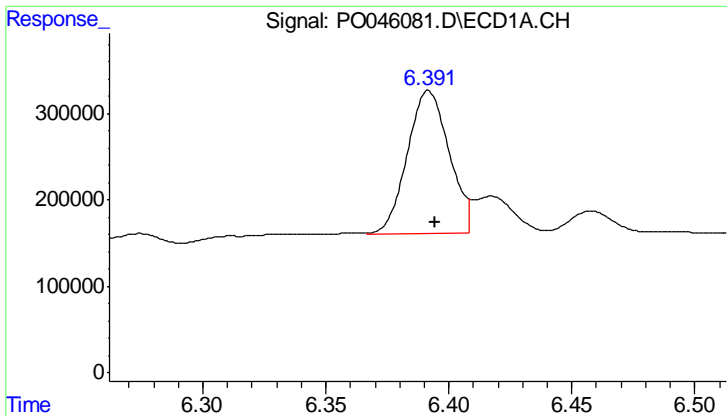
#5 AR-1016-3  
 R.T.: 4.964 min  
 Delta R.T.: -0.007 min  
 Response: 1522383  
 Conc: 247.81 ng/ml m



#6 AR-1016-4  
 R.T.: 6.159 min  
 Delta R.T.: 0.000 min  
 Response: 1324358  
 Conc: 104.10 ng/ml m



#6 AR-1016-4  
 R.T.: 5.137 min  
 Delta R.T.: -0.005 min  
 Response: 1693196  
 Conc: 255.97 ng/ml m



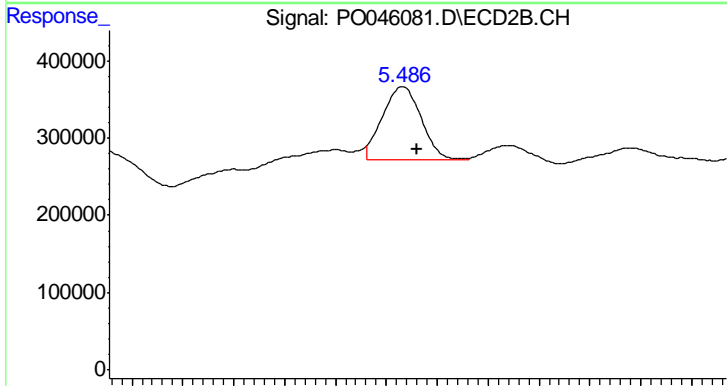
#7 AR-1016-5

R.T.: 6.391 min  
 Delta R.T.: -0.003 min  
 Response: 1969060  
 Conc: 173.85 ng/ml

Instrument :  
 ECD\_O  
 ClientSampleId :  
 SB-56-COMPMSD

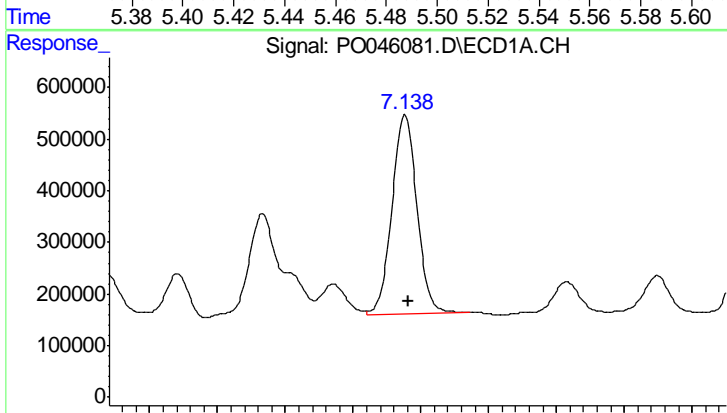
Manual Integrations  
 APPROVED

ugo  
 6/25/2018 3:06:48 PM



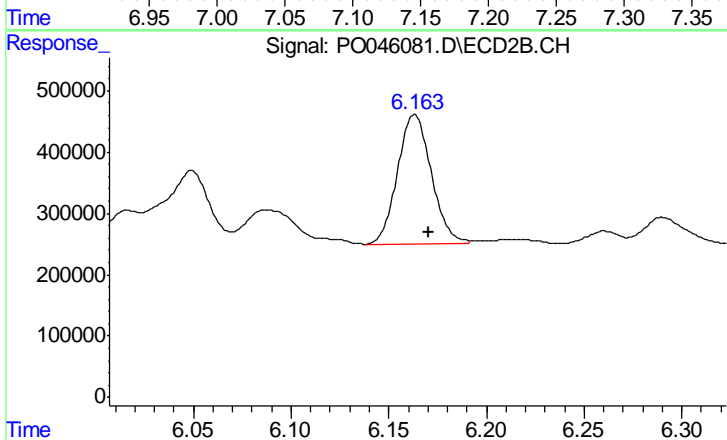
#7 AR-1016-5

R.T.: 5.486 min  
 Delta R.T.: -0.006 min  
 Response: 1015711  
 Conc: 157.97 ng/ml m



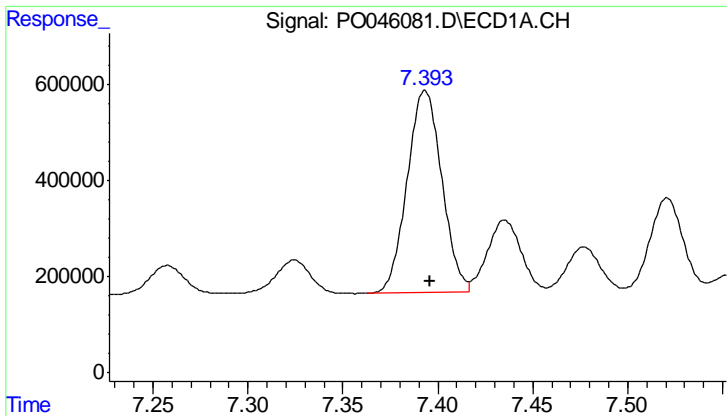
#31 AR-1260-1

R.T.: 7.138 min  
 Delta R.T.: -0.003 min  
 Response: 4900450  
 Conc: 205.07 ng/ml



#31 AR-1260-1

R.T.: 6.163 min  
 Delta R.T.: -0.007 min  
 Response: 2550356  
 Conc: 210.31 ng/ml m



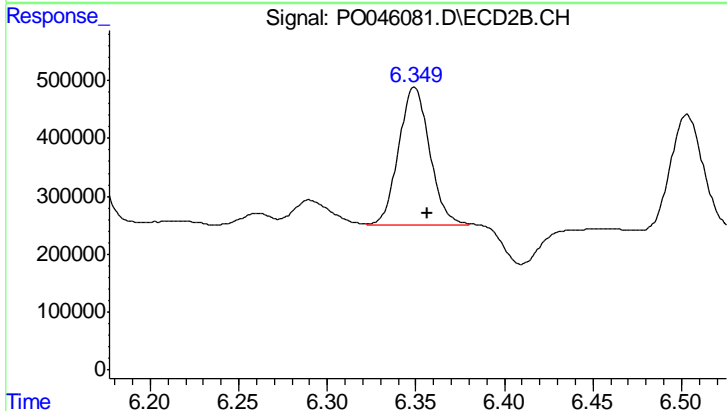
#32 AR-1260-2

R.T.: 7.393 min  
 Delta R.T.: -0.003 min  
 Response: 5358708  
 Conc: 186.26 ng/ml

Instrument :  
 ECD\_O  
 ClientSampled :  
 SB-56-COMPMSD

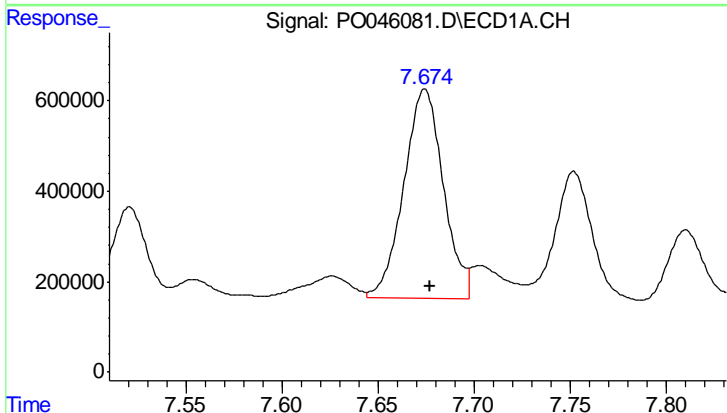
Manual Integrations  
 APPROVED

ugo  
 6/25/2018 3:06:48 PM



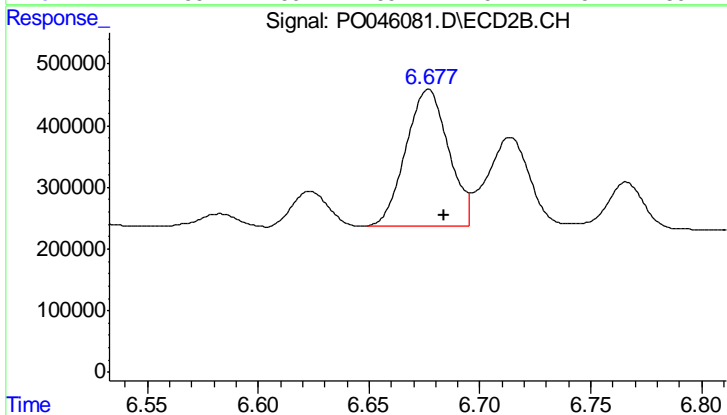
#32 AR-1260-2

R.T.: 6.349 min  
 Delta R.T.: -0.008 min  
 Response: 2896664  
 Conc: 196.38 ng/ml m



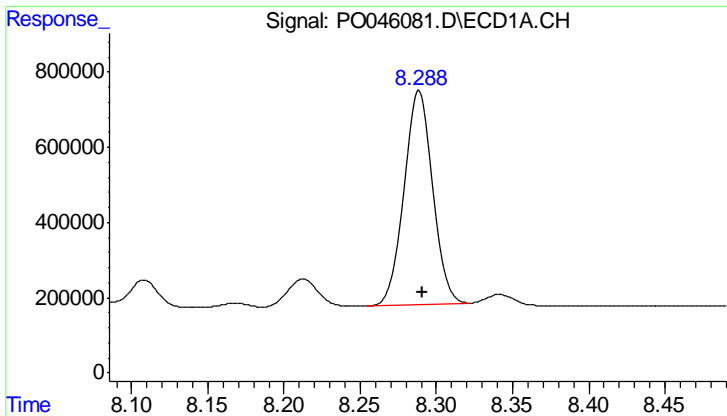
#33 AR-1260-3

R.T.: 7.674 min  
 Delta R.T.: -0.002 min  
 Response: 6612965  
 Conc: 192.14 ng/ml



#33 AR-1260-3

R.T.: 6.677 min  
 Delta R.T.: -0.007 min  
 Response: 2972216  
 Conc: 195.25 ng/ml m



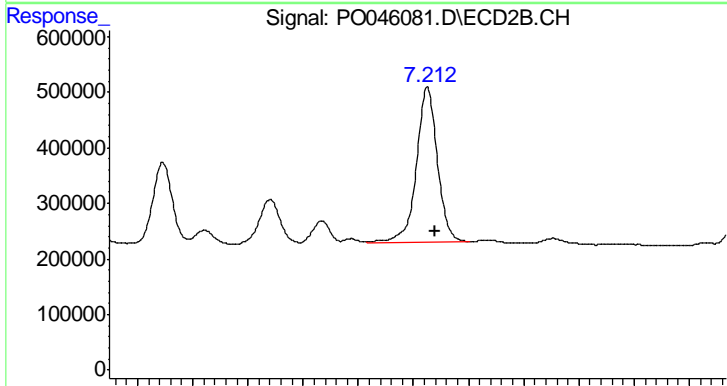
#34 AR-1260-4

R.T.: 8.289 min  
 Delta R.T.: -0.002 min  
 Response: 7362767  
 Conc: 153.54 ng/ml

Instrument :  
 ECD\_O  
 ClientSampled :  
 SB-56-COMPMSD

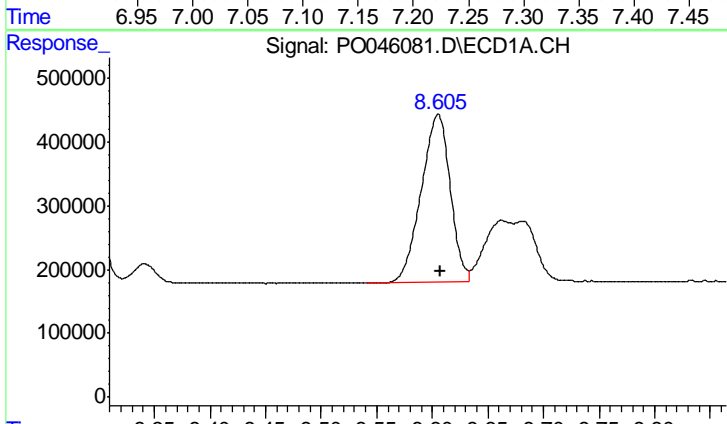
Manual Integrations  
 APPROVED

ugo  
 6/25/2018 3:06:48 PM



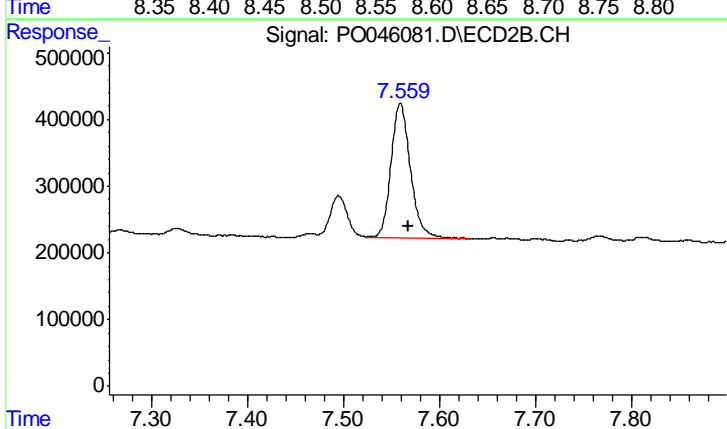
#34 AR-1260-4

R.T.: 7.213 min  
 Delta R.T.: -0.008 min  
 Response: 3731637  
 Conc: 168.58 ng/ml



#35 AR-1260-5

R.T.: 8.605 min  
 Delta R.T.: -0.002 min  
 Response: 4784642  
 Conc: 160.82 ng/ml



#35 AR-1260-5

R.T.: 7.559 min  
 Delta R.T.: -0.008 min  
 Response: 2872660  
 Conc: 177.45 ng/ml