

Data Path : Z:\pestpcbsrv\HPCHEM1\ECD O\Data\PO062218\
 Data File : PO046088.D
 Signal(s) : Signal #1: ECD1A.CH Signal #2: ECD2B.CH
 Acq On : 22 Jun 2018 17:26
 Operator : SM/UA
 Sample : J3497-01RE
 Misc :
 ALS Vial : 10 Sample Multiplier: 1

Instrument :
 ECD_O
 ClientSampleId :
 CAS1-WC-L-01RE

Integration File signal 1: autoint1.e
 Integration File signal 2: autoint2.e
 Quant Time: Jun 22 17:43:52 2018
 Quant Method : Z:\pestpcbsrv\HPCHEM1\ECD_O\methods\PO061918.M
 Quant Title : GC EXTRACTABLES
 QLast Update : Wed Jun 20 03:39:54 2018
 Response via : Initial Calibration
 Integrator: ChemStation 6890 Scale Mode: Small noise peaks clipped

Volume Inj. : 2 µl
 Signal #1 Phase : ZB-MR1 Signal #2 Phase: ZB-MR2
 Signal #1 Info : 30Mx0.32mmx 0.50µ Signal #2 Info : 30M x 0.32mm x 0.25µm

Compound	RT#1	RT#2	Resp#1	Resp#2	ng/ml	ng/ml

System Monitoring Compounds						
1) SA Tetrachlo...	4.382	3.611	1849273	1065558	3.867	4.239
2) SA Decachlor...	0.000	8.585	0	375917	N.D.	2.400 #
Target Compounds						
3) L1 AR-1016-1	5.302	4.467	4231093	1020369	377.105	149.782 #
4) L1 AR-1016-2	0.000	4.994	0	443046	N.D.	88.077 #
5) L1 AR-1016-3	0.000	4.994	0	443046	N.D.	72.119 #
6) L1 AR-1016-4	0.000	5.166	0	3482303	N.D.	526.440 #
7) L1 AR-1016-5	6.392	5.513	15516897	12832556	1369.993	1995.803 #
8) L2 AR-1221-1	4.568	3.772	992642	1032638	146.432	256.530 #
9) L2 AR-1221-2	0.000	3.950	0	185657	N.D.	65.031 #
10) L2 AR-1221-3	0.000	3.987	0	338689	N.D.	38.509 #
11) L3 AR-1232-1	0.000	3.987	0	338689	N.D.	57.515 #
12) L3 AR-1232-2	5.477	0.000	1036647	0	132.020	N.D. #
15) L3 AR-1232-5	0.000	4.843	0	565231	N.D.	170.548 #
16) L4 AR-1242-1	0.000	4.467	0	1020369	N.D.	191.885 #
18) L4 AR-1242-3	0.000	4.843	0	565231	N.D.	110.558 #
19) L4 AR-1242-4	5.978	4.994	1221995	443046	134.161	90.946 #
20) L4 AR-1242-5	0.000	5.166	0	3482303	N.D.	683.283 #
21) L5 AR-1248-1	5.978	5.166	1221995	3482303	76.977	417.440 #
22) L5 AR-1248-2	0.000	5.340	0	4262709	N.D.	556.851 #
23) L5 AR-1248-3	6.392	5.513	15516897	12832556	842.570	1118.905 #
24) L5 AR-1248-4	6.392	5.513	15516897	12832556	864.332	1517.092 #
25) L5 AR-1248-5	0.000	6.029	0	10781717	N.D.	1921.320 #
26) L6 AR-1254-1	0.000	5.513	0	12832556	N.D.	1001.898 #
27) L6 AR-1254-2	0.000	5.638	0	1128836	N.D.	102.240 #
28) L6 AR-1254-3	6.971	6.029	25545986	10781717	755.232	603.086
29) L6 AR-1254-4	0.000	6.284	0	4458331	N.D.	401.580 #
30) L6 AR-1254-5	0.000	6.542	0	3384823	N.D.	440.998 #
31) L7 AR-1260-1	0.000	6.163	0	3651088	N.D.	301.076 #
32) L7 AR-1260-2	0.000	6.338	0	13320169	N.D.	903.031 #
33) L7 AR-1260-3	0.000	6.677	0	322005	N.D.	21.153 #
35) L7 AR-1260-5	0.000	7.526	0	43828554	N.D.	2707.338 #
36) L8 AR-1262-1	0.000	6.338	0	13320169	N.D.	1058.719 #
37) L8 AR-1262-2	0.000	6.542	0	3384823	N.D.	275.992 #
38) L8 AR-1262-3	0.000	6.677	0	322005	N.D.	19.280 #
41) L9 AR-1268-1	0.000	7.526	0	43828554	N.D.	1737.318 #
42) L9 AR-1268-2	0.000	7.526	0	43828554	N.D.	1821.799 #

Data Path : Z:\pestpcbsrv\HPCHEM1\ECD O\Data\PO062218\
Data File : PO046088.D
Signal(s) : Signal #1: ECD1A.CH Signal #2: ECD2B.CH
Acq On : 22 Jun 2018 17:26
Operator : SM/UA
Sample : J3497-01RE
Misc :
ALS Vial : 10 Sample Multiplier: 1

Instrument :
ECD_O
ClientSampleId :
CAS1-WC-L-01RE

Integration File signal 1: autoint1.e
Integration File signal 2: autoint2.e
Quant Time: Jun 22 17:43:52 2018
Quant Method : Z:\pestpcbsrv\HPCHEM1\ECD_O\methods\PO061918.M
Quant Title : GC EXTRACTABLES
QLast Update : Wed Jun 20 03:39:54 2018
Response via : Initial Calibration
Integrator: ChemStation 6890 Scale Mode: Small noise peaks clipped

Volume Inj. : 2 µl
Signal #1 Phase : ZB-MR1 Signal #2 Phase: ZB-MR2
Signal #1 Info : 30Mx0.32mmx 0.50µ Signal #2 Info : 30M x 0.32mm x 0.25µm

Compound	RT#1	RT#2	Resp#1	Resp#2	nq/ml	nq/ml
----------	------	------	--------	--------	-------	-------

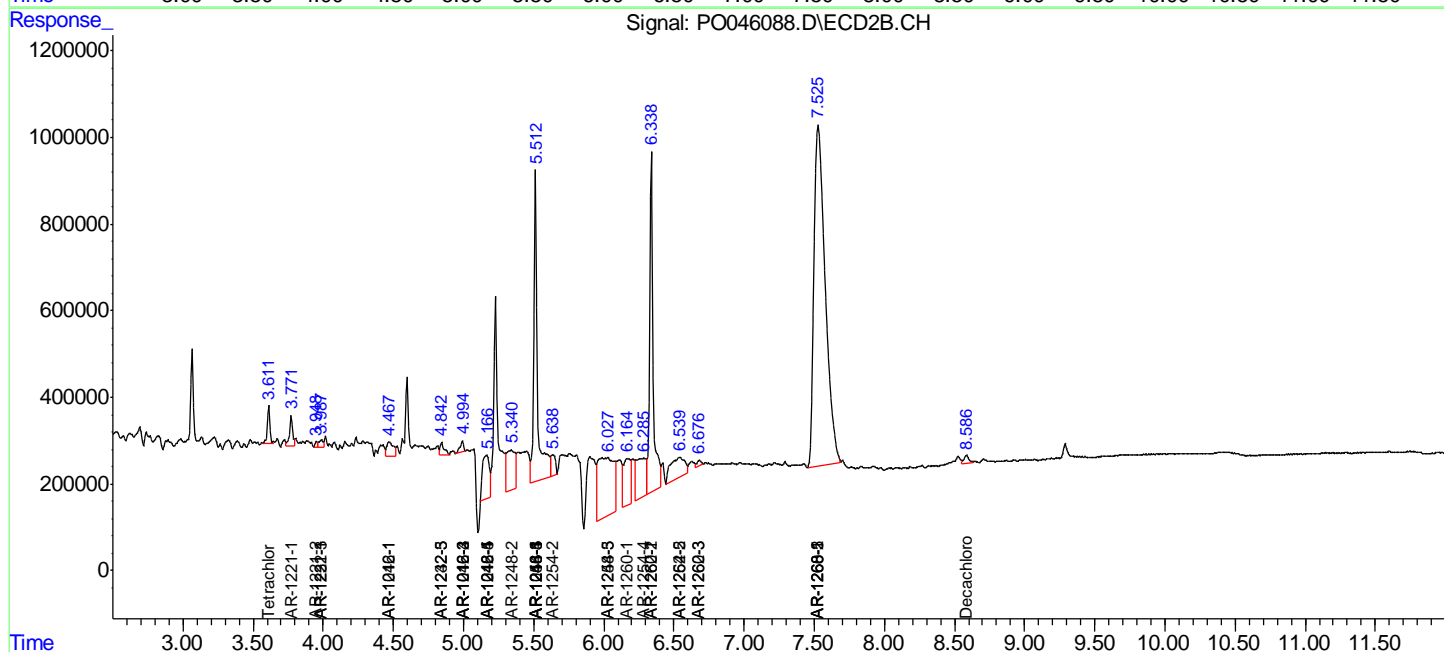
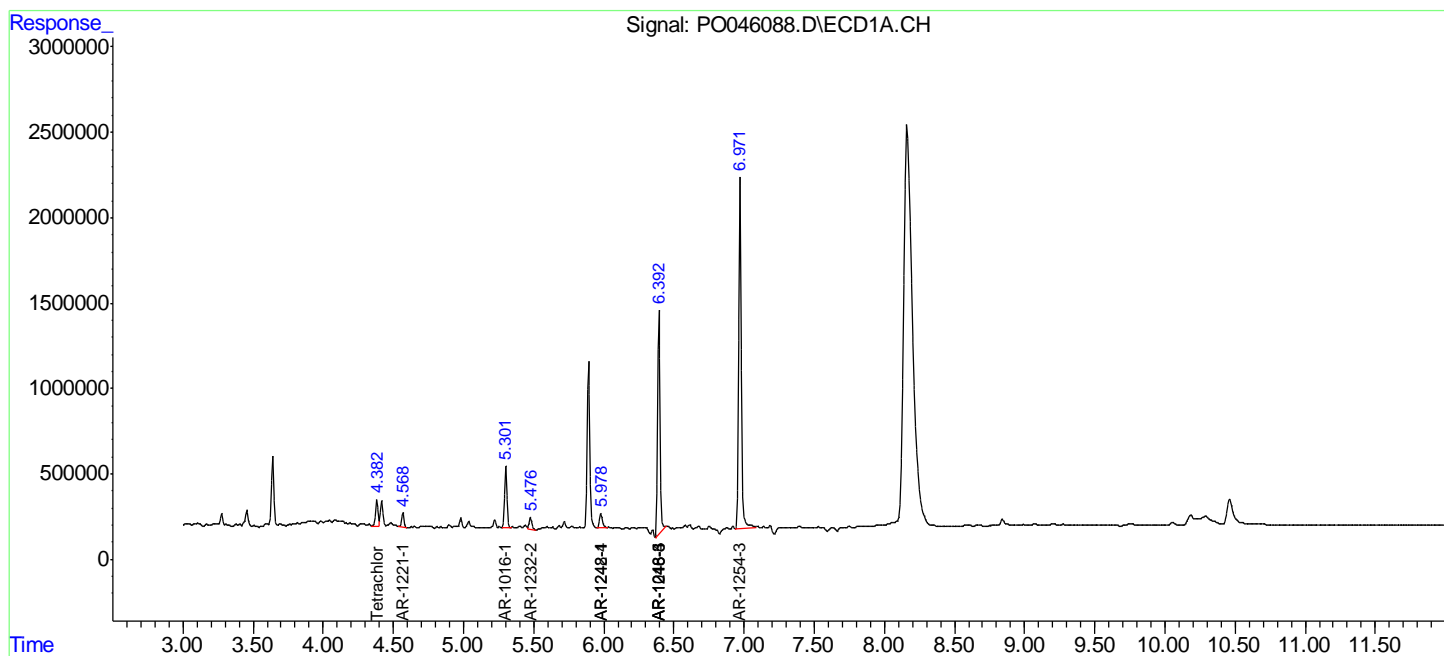
(f)=RT Delta > 1/2 Window (#)=Amounts differ by > 25% (m)=manual int.

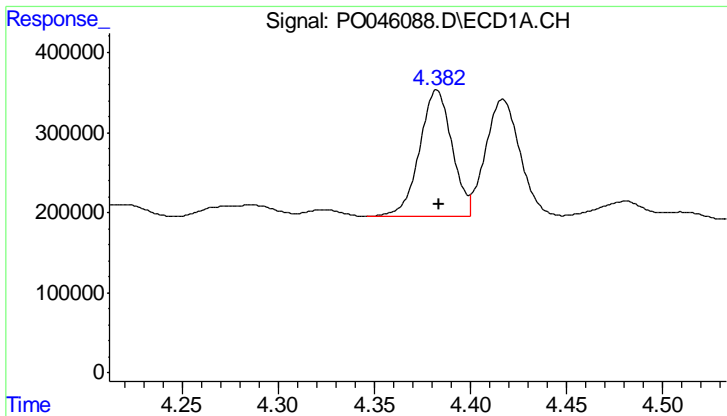
Data Path : Z:\pestpcbsrv\HPCHEM1\ECD O\Data\PO062218\
 Data File : PO046088.D
 Signal(s) : Signal #1: ECD1A.CH Signal #2: ECD2B.CH
 Acq On : 22 Jun 2018 17:26
 Operator : SM/UA
 Sample : J3497-01RE
 Misc :
 ALS Vial : 10 Sample Multiplier: 1

Instrument :
 ECD_O
 ClientSampled :
 CAS1-WC-L-01RE

Integration File signal 1: autoint1.e
 Integration File signal 2: autoint2.e
 Quant Time: Jun 22 17:43:52 2018
 Quant Method : Z:\pestpcbsrv\HPCHEM1\ECD_O\methods\PO061918.M
 Quant Title : GC EXTRACTABLES
 QLast Update : Wed Jun 20 03:39:54 2018
 Response via : Initial Calibration
 Integrator: ChemStation 6890 Scale Mode: Small noise peaks clipped

Volume Inj. : 2 ul
 Signal #1 Phase : ZB-MR1 Signal #2 Phase: ZB-MR2
 Signal #1 Info : 30Mx0.32mmx 0.50µ Signal #2 Info : 30M x 0.32mm x 0.25µm

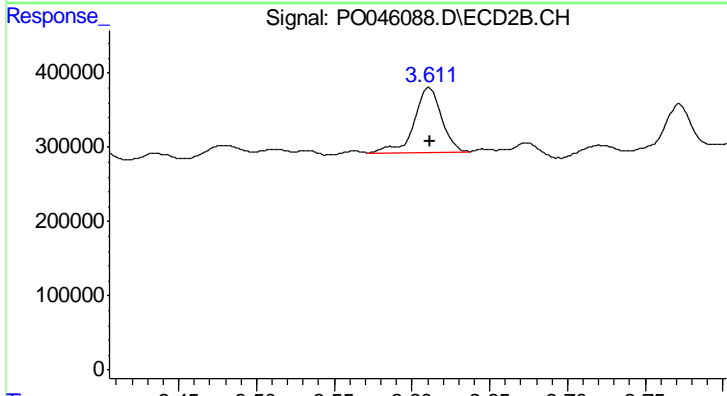




#1 Tetrachloro-m-xylene

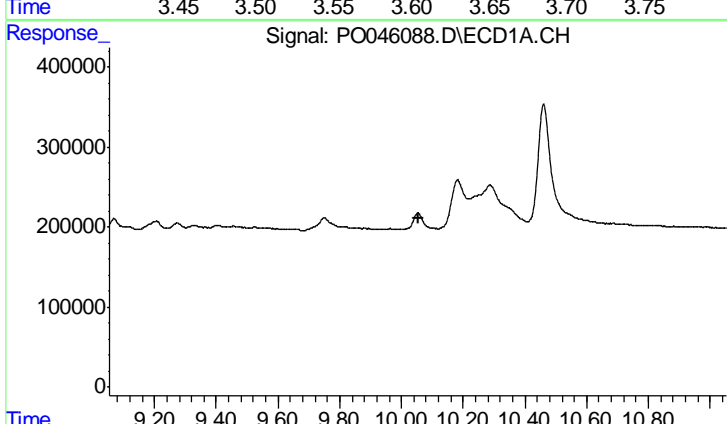
R.T.: 4.382 min
 Delta R.T.: -0.001 min
 Response: 1849273
 Conc: 3.87 ng/ml

Instrument :
 ECD_O
 ClientSampleId :
 CAS1-WC-L-01RE



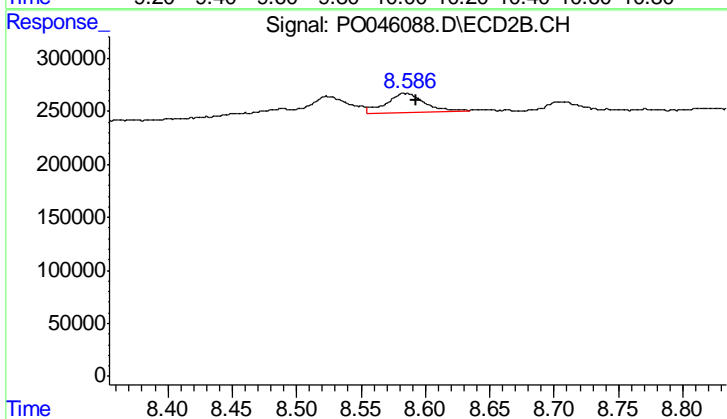
#1 Tetrachloro-m-xylene

R.T.: 3.611 min
 Delta R.T.: 0.000 min
 Response: 1065558
 Conc: 4.24 ng/ml



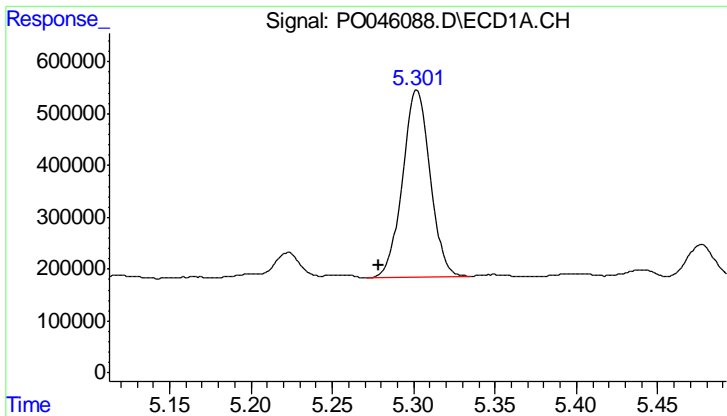
#2 Decachlorobiphenyl

R.T.: 0.000 min
 Exp R.T. : 10.054 min
 Response: 0
 Conc: N.D.



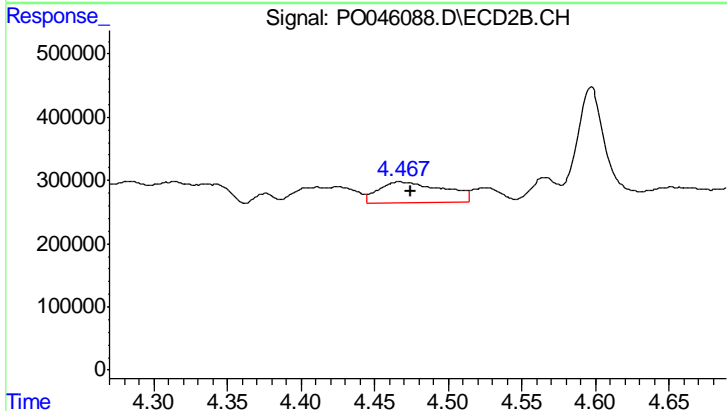
#2 Decachlorobiphenyl

R.T.: 8.585 min
 Delta R.T.: -0.008 min
 Response: 375917
 Conc: 2.40 ng/ml

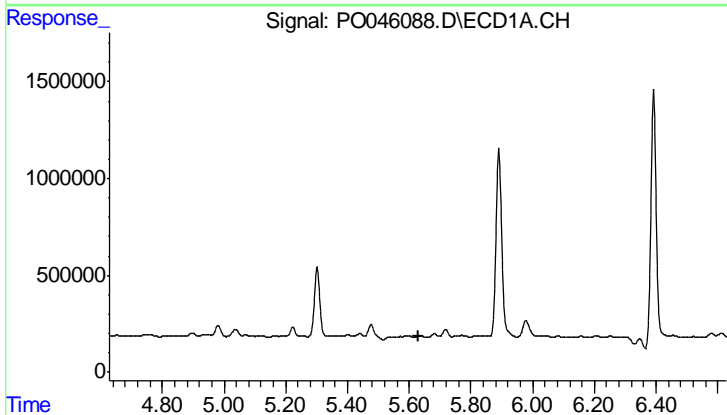


#3 AR-1016-1
 R.T.: 5.302 min
 Delta R.T.: 0.024 min
 Response: 4231093
 Conc: 377.11 ng/ml

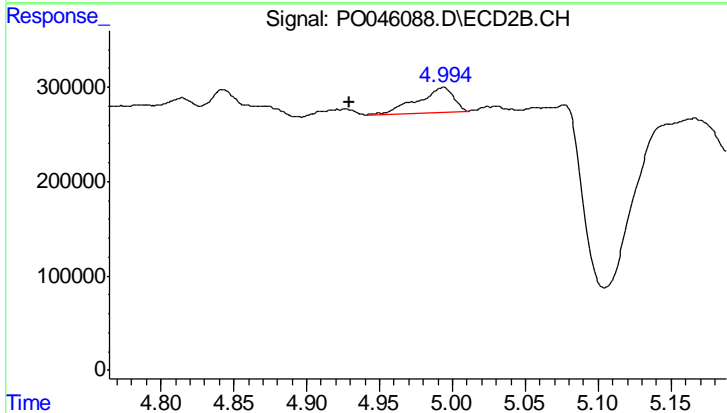
Instrument :
 ECD_O
 ClientSampleId :
 CAS1-WC-L-01RE



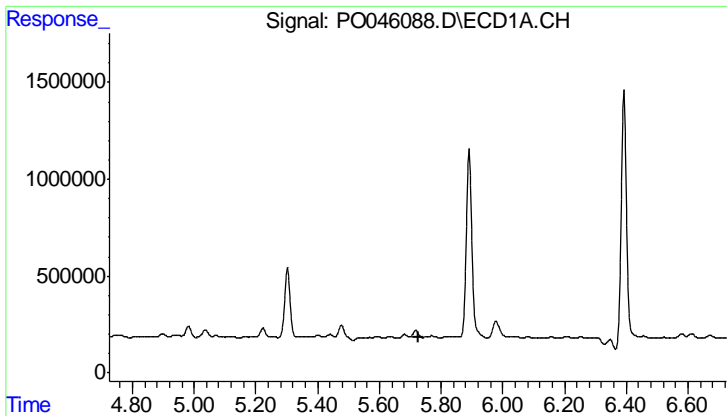
#3 AR-1016-1
 R.T.: 4.467 min
 Delta R.T.: -0.008 min
 Response: 1020369
 Conc: 149.78 ng/ml



#4 AR-1016-2
 R.T.: 0.000 min
 Exp R.T. : 5.629 min
 Response: 0
 Conc: N.D.



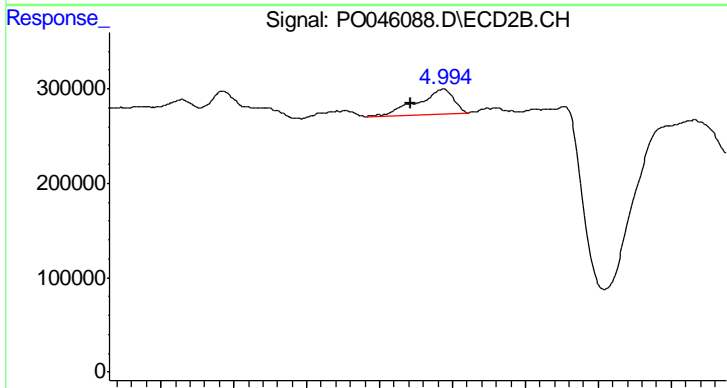
#4 AR-1016-2
 R.T.: 4.994 min
 Delta R.T.: 0.064 min
 Response: 443046
 Conc: 88.08 ng/ml



#5 AR-1016-3

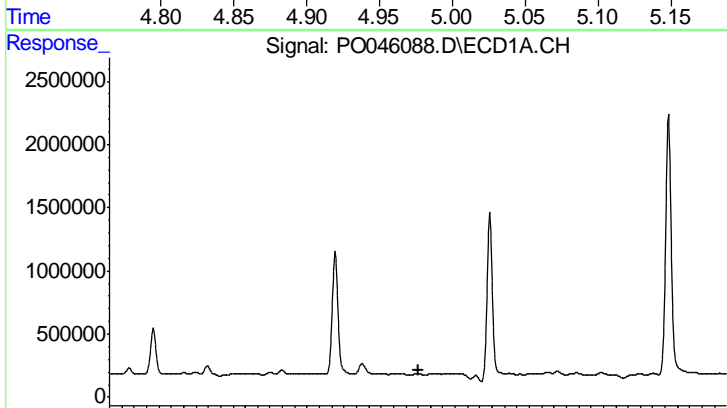
R.T.: 0.000 min
 Exp R.T.: 5.725 min
 Response: 0
 Conc: N.D.

Instrument :
 ECD_O
 ClientSampleId :
 CAS1-WC-L-01RE



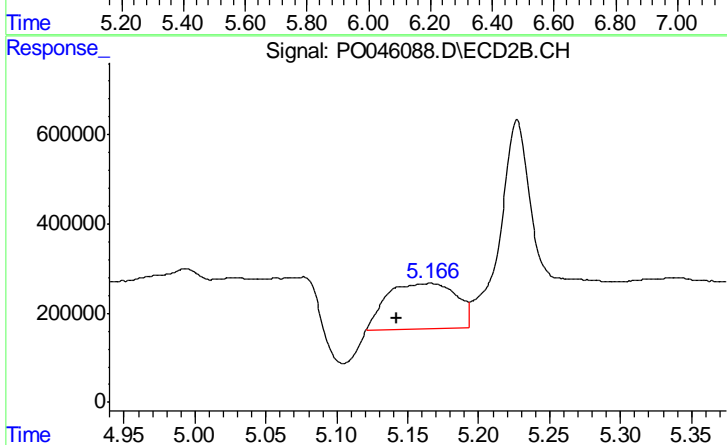
#5 AR-1016-3

R.T.: 4.994 min
 Delta R.T.: 0.023 min
 Response: 443046
 Conc: 72.12 ng/ml



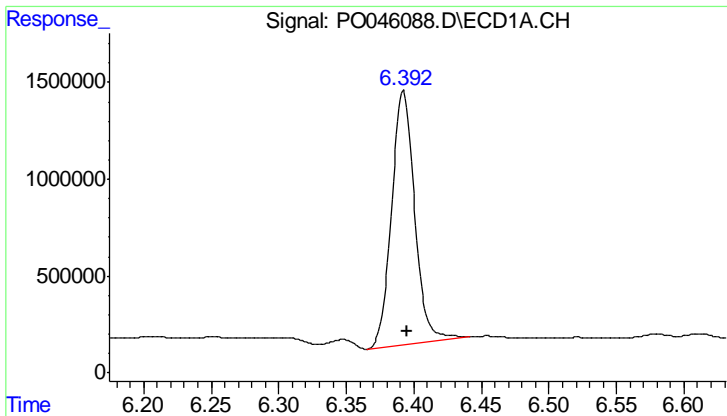
#6 AR-1016-4

R.T.: 0.000 min
 Exp R.T.: 6.160 min
 Response: 0
 Conc: N.D.



#6 AR-1016-4

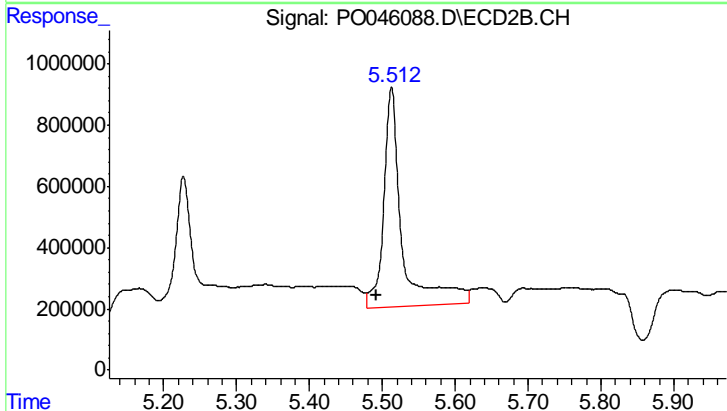
R.T.: 5.166 min
 Delta R.T.: 0.024 min
 Response: 3482303
 Conc: 526.44 ng/ml



#7 AR-1016-5

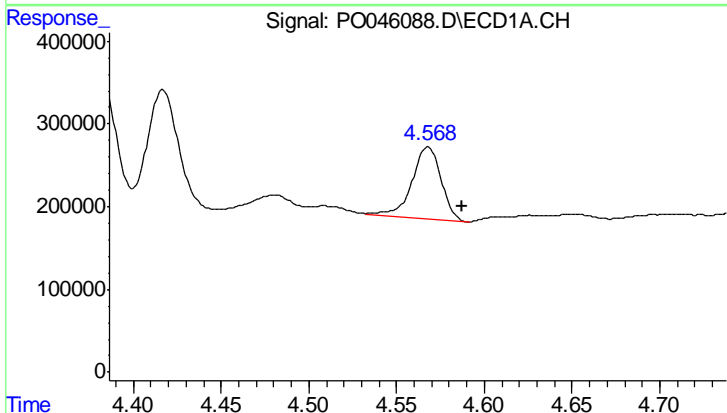
R.T.: 6.392 min
 Delta R.T.: -0.002 min
 Response: 15516897
 Conc: 1369.99 ng/ml

Instrument :
 ECD_O
 ClientSampleId :
 CAS1-WC-L-01RE



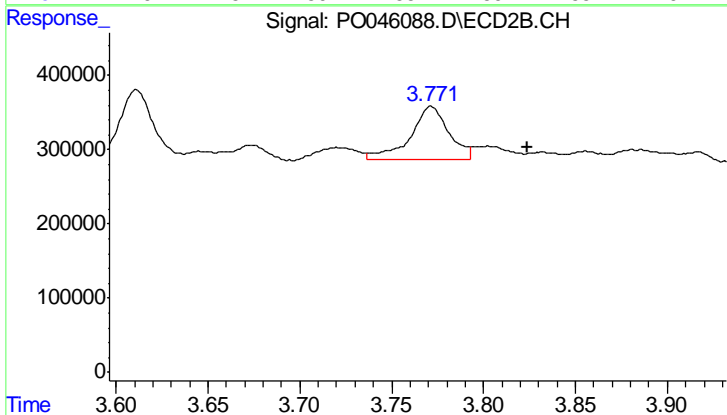
#7 AR-1016-5

R.T.: 5.513 min
 Delta R.T.: 0.020 min
 Response: 12832556
 Conc: 1995.80 ng/ml



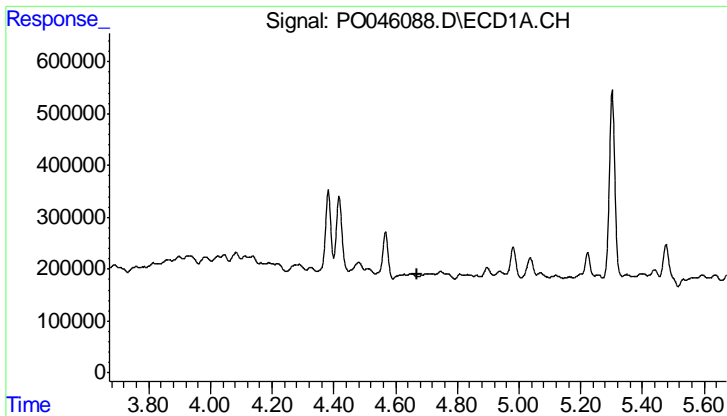
#8 AR-1221-1

R.T.: 4.568 min
 Delta R.T.: -0.019 min
 Response: 992642
 Conc: 146.43 ng/ml



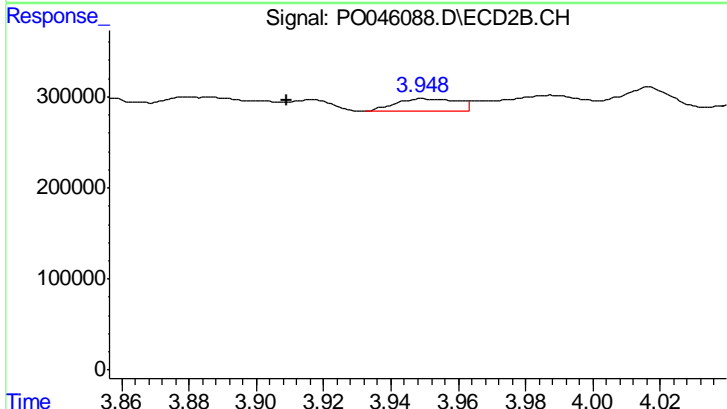
#8 AR-1221-1

R.T.: 3.772 min
 Delta R.T.: -0.052 min
 Response: 1032638
 Conc: 256.53 ng/ml

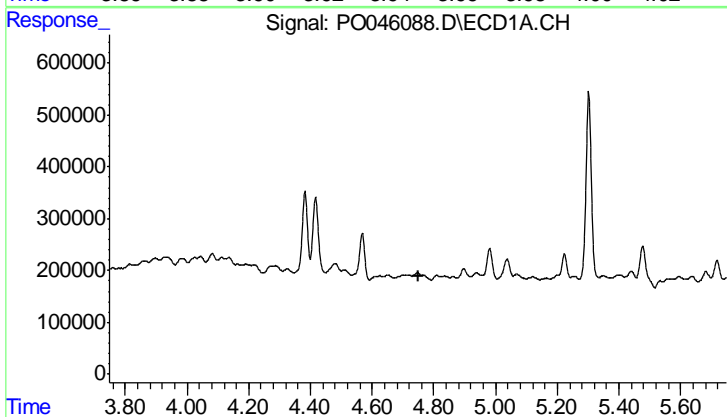


#9 AR-1221-2
 R.T.: 0.000 min
 Exp R.T.: 4.672 min
 Response: 0
 Conc: N.D.

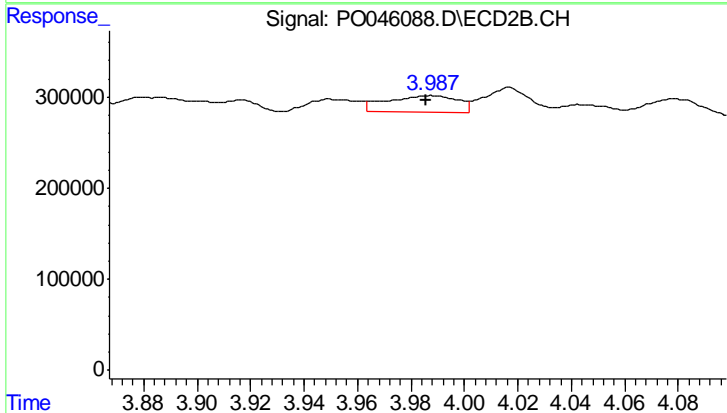
Instrument :
 ECD_O
 ClientSampled :
 CAS1-WC-L-01RE



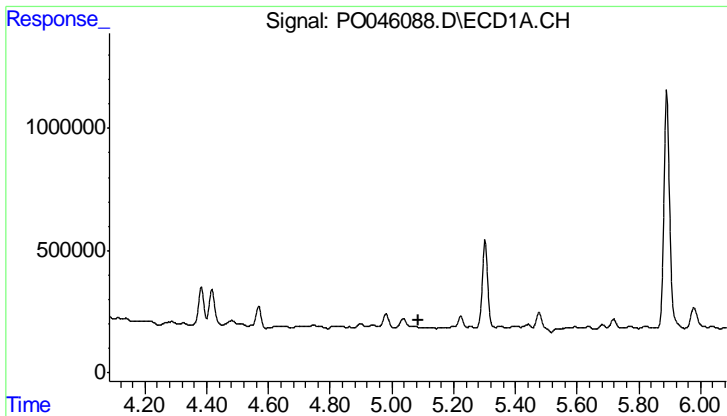
#9 AR-1221-2
 R.T.: 3.950 min
 Delta R.T.: 0.041 min
 Response: 185657
 Conc: 65.03 ng/ml



#10 AR-1221-3
 R.T.: 0.000 min
 Exp R.T.: 4.749 min
 Response: 0
 Conc: N.D.

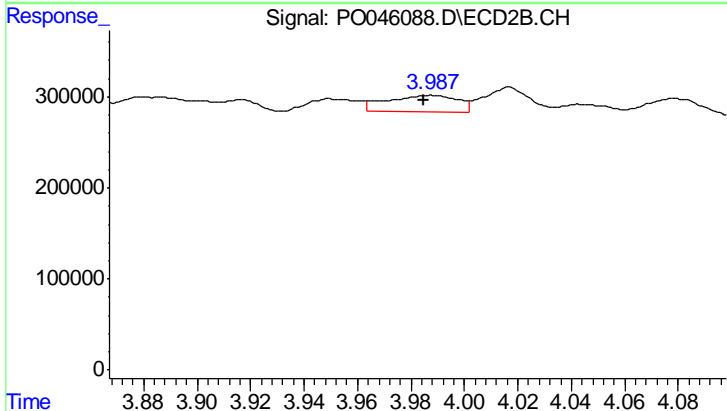


#10 AR-1221-3
 R.T.: 3.987 min
 Delta R.T.: 0.001 min
 Response: 338689
 Conc: 38.51 ng/ml

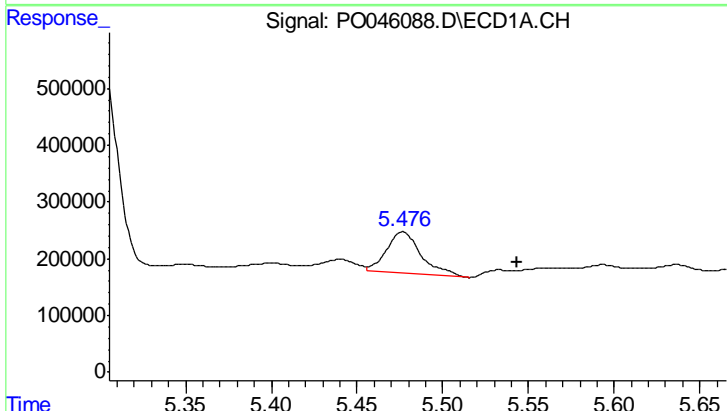


#11 AR-1232-1
 R.T.: 0.000 min
 Exp R.T.: 5.085 min
 Response: 0
 Conc: N.D.

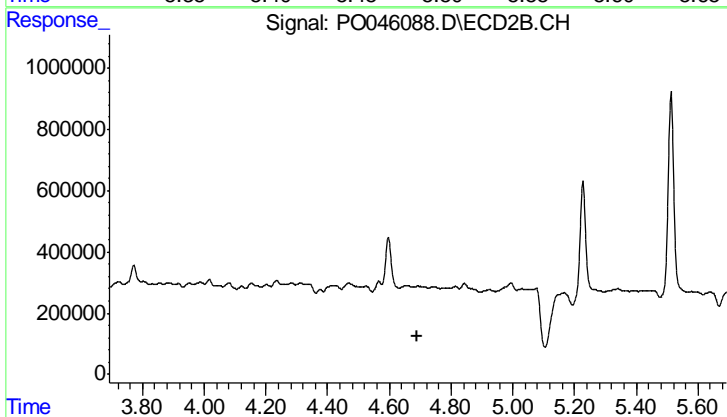
Instrument :
 ECD_O
 ClientSampleId :
 CAS1-WC-L-01RE



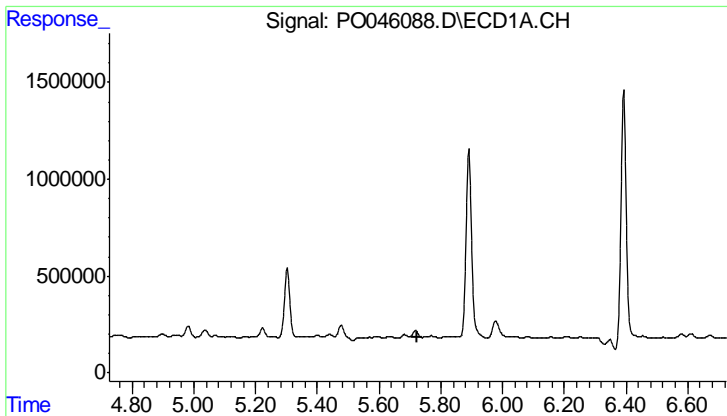
#11 AR-1232-1
 R.T.: 3.987 min
 Delta R.T.: 0.002 min
 Response: 338689
 Conc: 57.52 ng/ml



#12 AR-1232-2
 R.T.: 5.477 min
 Delta R.T.: -0.066 min
 Response: 1036647
 Conc: 132.02 ng/ml



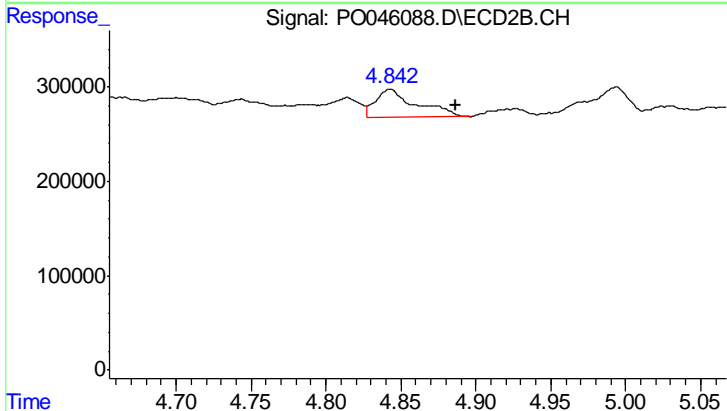
#12 AR-1232-2
 R.T.: 0.000 min
 Exp R.T.: 4.692 min
 Response: 0
 Conc: N.D.



#15 AR-1232-5

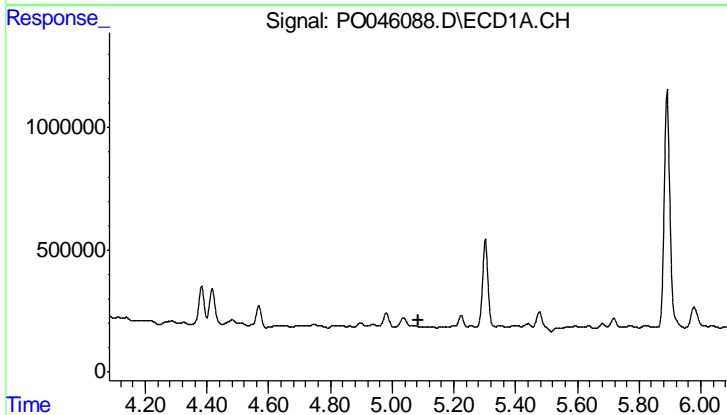
R.T.: 0.000 min
 Exp R.T.: 5.726 min
 Response: 0
 Conc: N.D.

Instrument :
 ECD_O
 ClientSampleId :
 CAS1-WC-L-01RE



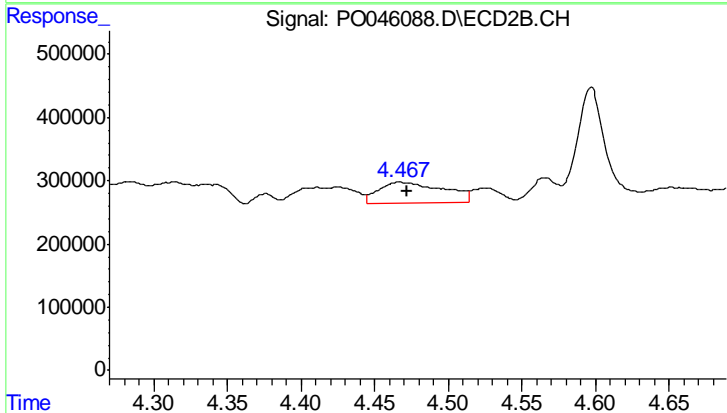
#15 AR-1232-5

R.T.: 4.843 min
 Delta R.T.: -0.044 min
 Response: 565231
 Conc: 170.55 ng/ml



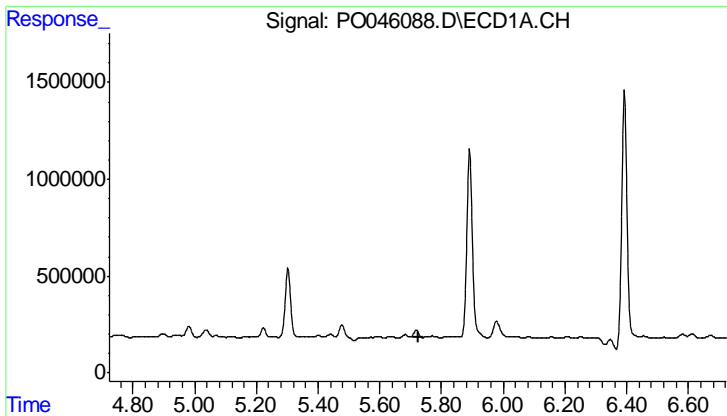
#16 AR-1242-1

R.T.: 0.000 min
 Exp R.T.: 5.084 min
 Response: 0
 Conc: N.D.



#16 AR-1242-1

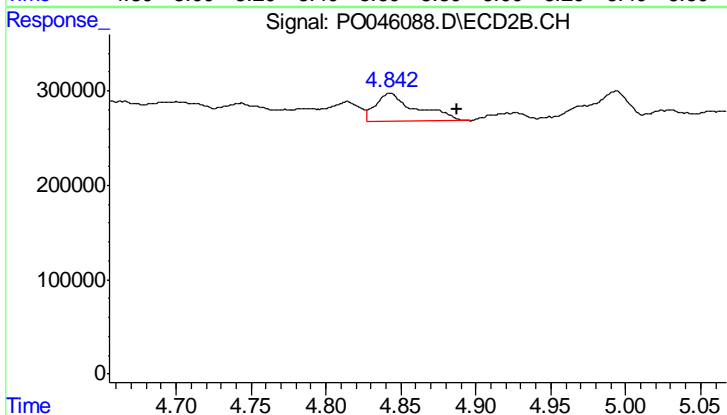
R.T.: 4.467 min
 Delta R.T.: -0.005 min
 Response: 1020369
 Conc: 191.88 ng/ml



#18 AR-1242-3

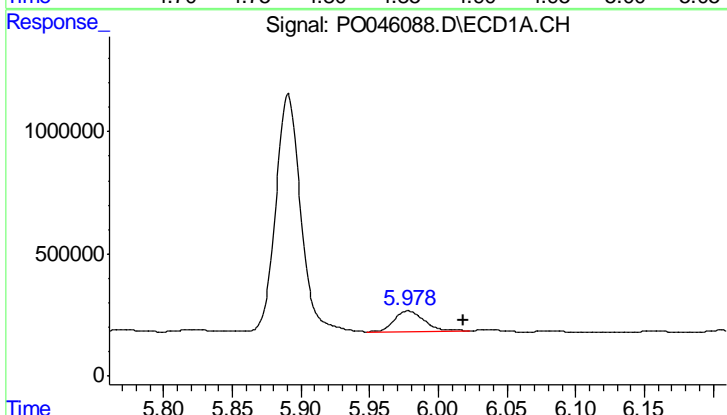
R.T.: 0.000 min
 Exp R.T.: 5.724 min
 Response: 0
 Conc: N.D.

Instrument :
 ECD_O
 ClientSampleId :
 CAS1-WC-L-01RE



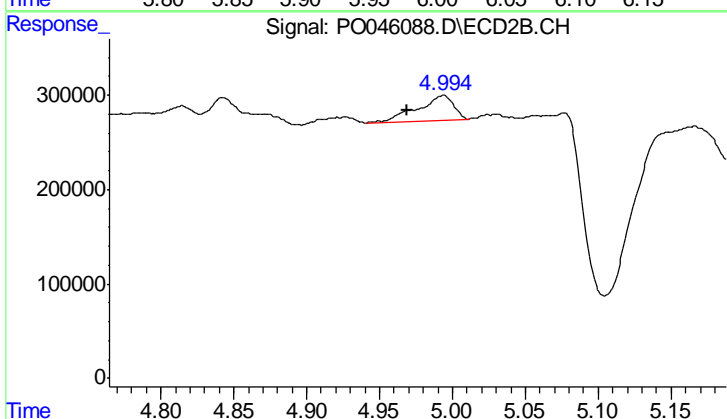
#18 AR-1242-3

R.T.: 4.843 min
 Delta R.T.: -0.044 min
 Response: 565231
 Conc: 110.56 ng/ml



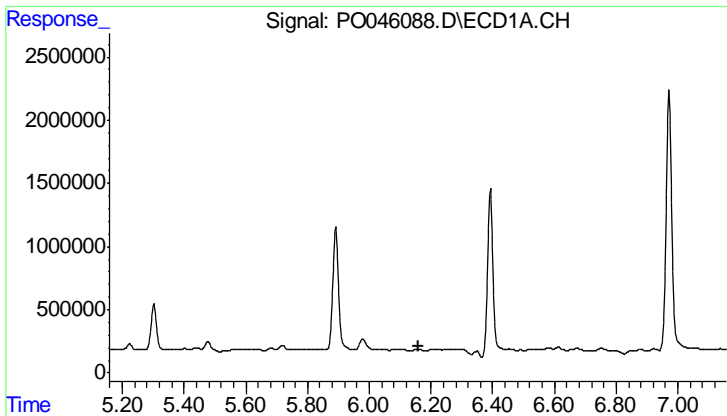
#19 AR-1242-4

R.T.: 5.978 min
 Delta R.T.: -0.040 min
 Response: 1221995
 Conc: 134.16 ng/ml



#19 AR-1242-4

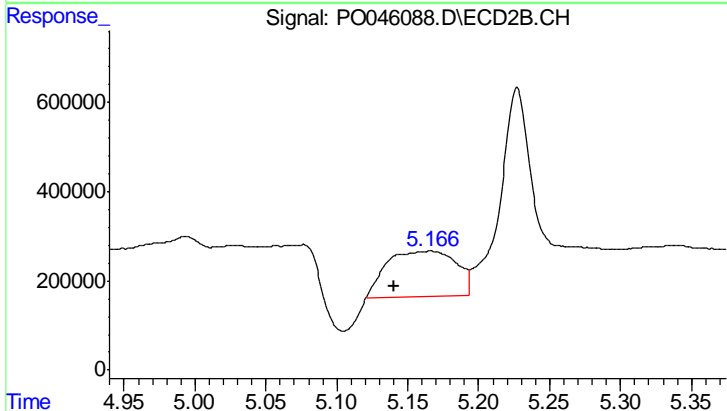
R.T.: 4.994 min
 Delta R.T.: 0.025 min
 Response: 443046
 Conc: 90.95 ng/ml



#20 AR-1242-5

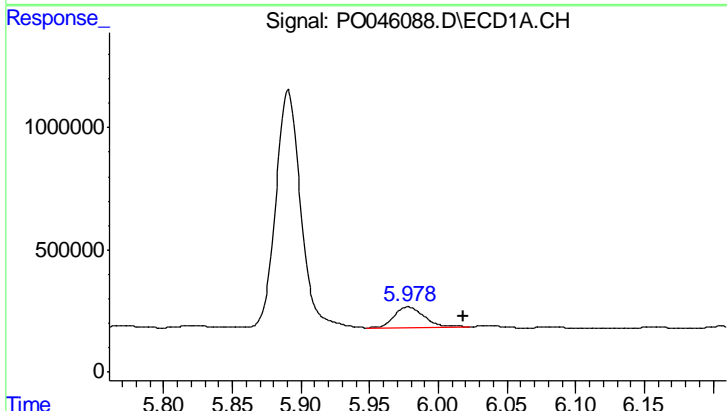
R.T.: 0.000 min
 Exp R.T.: 6.158 min
 Response: 0
 Conc: N.D.

Instrument :
 ECD_O
 ClientSampled :
 CAS1-WC-L-01RE



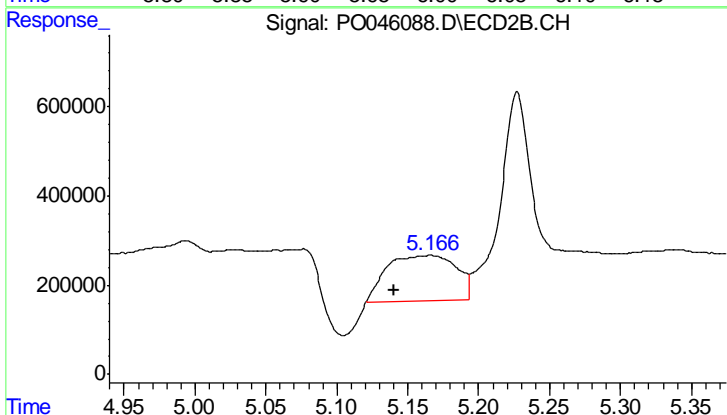
#20 AR-1242-5

R.T.: 5.166 min
 Delta R.T.: 0.026 min
 Response: 3482303
 Conc: 683.28 ng/ml



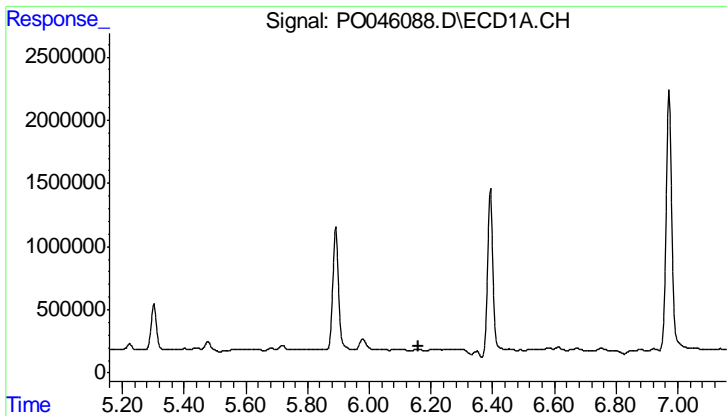
#21 AR-1248-1

R.T.: 5.978 min
 Delta R.T.: -0.041 min
 Response: 1221995
 Conc: 76.98 ng/ml



#21 AR-1248-1

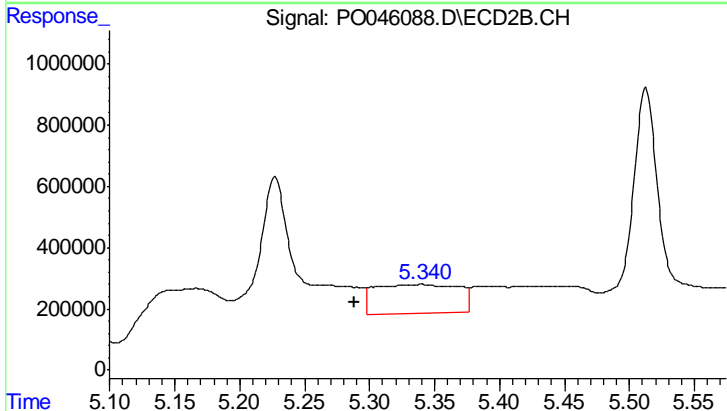
R.T.: 5.166 min
 Delta R.T.: 0.026 min
 Response: 3482303
 Conc: 417.44 ng/ml



#22 AR-1248-2

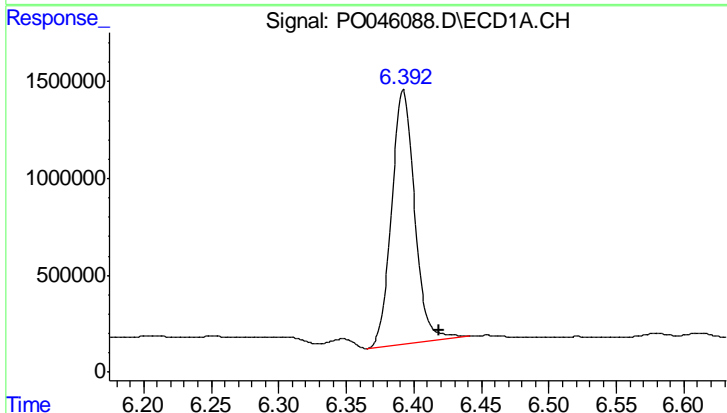
R.T.: 0.000 min
 Exp R.T.: 6.158 min
 Response: 0
 Conc: N.D.

Instrument :
 ECD_O
 ClientSampleId :
 CAS1-WC-L-01RE



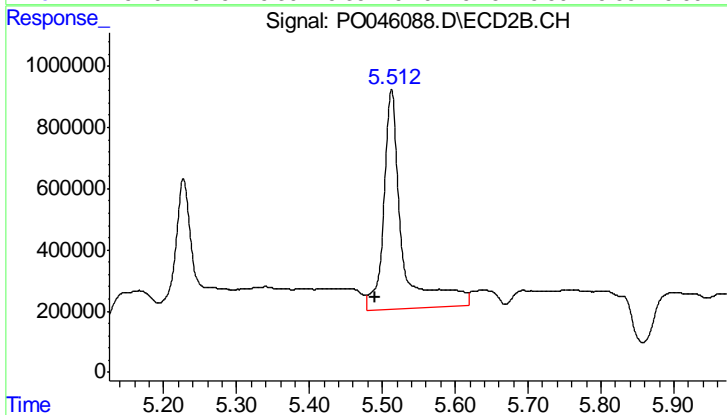
#22 AR-1248-2

R.T.: 5.340 min
 Delta R.T.: 0.052 min
 Response: 4262709
 Conc: 556.85 ng/ml



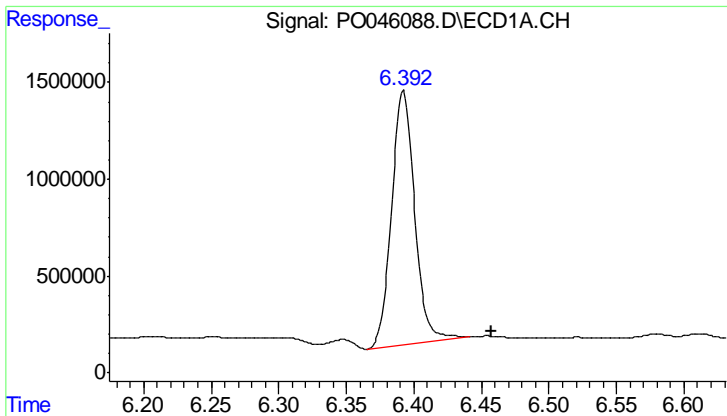
#23 AR-1248-3

R.T.: 6.392 min
 Delta R.T.: -0.027 min
 Response: 15516897
 Conc: 842.57 ng/ml



#23 AR-1248-3

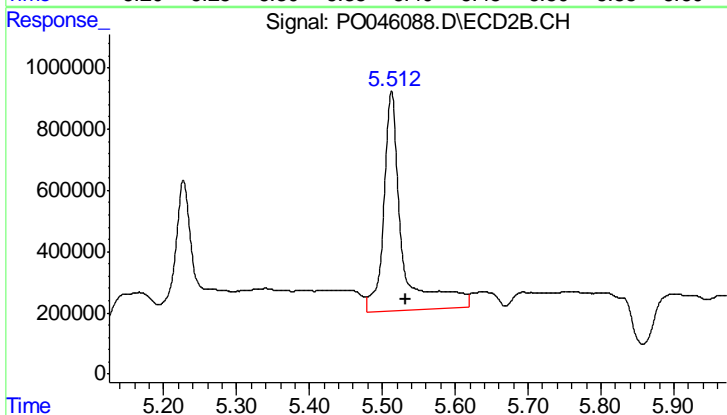
R.T.: 5.513 min
 Delta R.T.: 0.022 min
 Response: 12832556
 Conc: 1118.91 ng/ml



#24 AR-1248-4

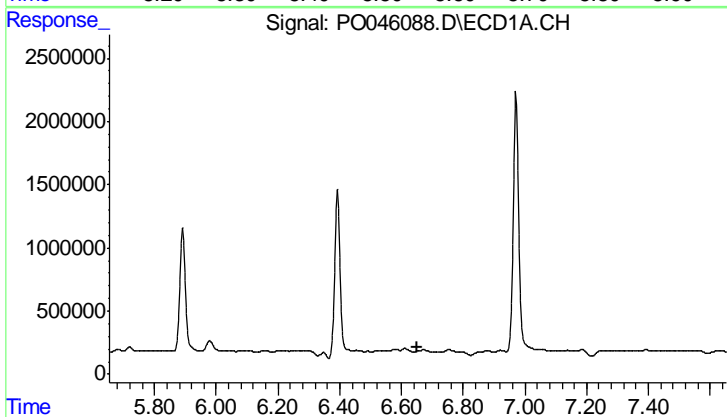
R.T.: 6.392 min
 Delta R.T.: -0.065 min
 Response: 15516897
 Conc: 864.33 ng/ml

Instrument :
 ECD_O
 ClientSampleId :
 CAS1-WC-L-01RE



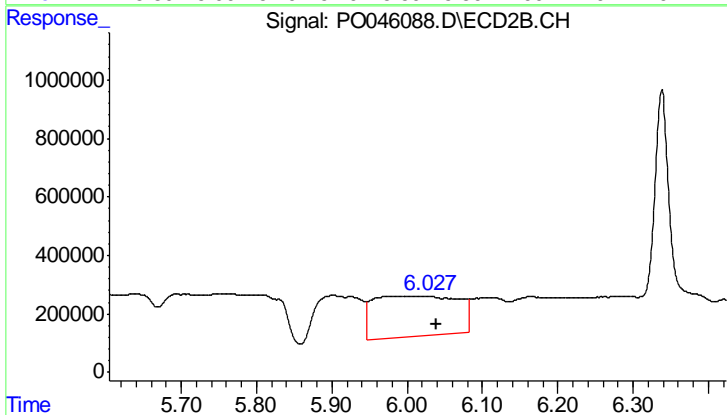
#24 AR-1248-4

R.T.: 5.513 min
 Delta R.T.: -0.019 min
 Response: 12832556
 Conc: 1517.09 ng/ml



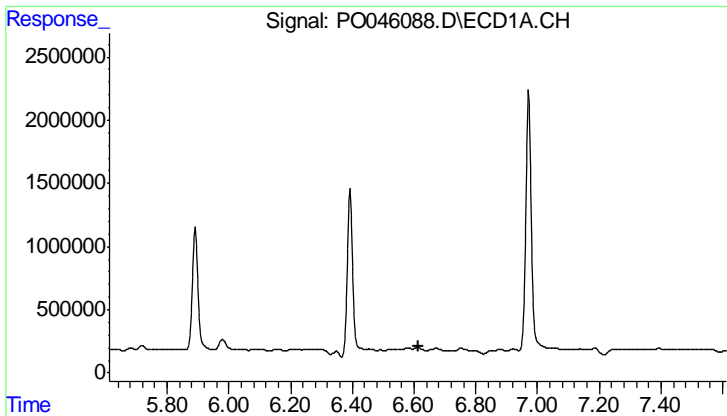
#25 AR-1248-5

R.T.: 0.000 min
 Exp R.T. : 6.653 min
 Response: 0
 Conc: N.D.



#25 AR-1248-5

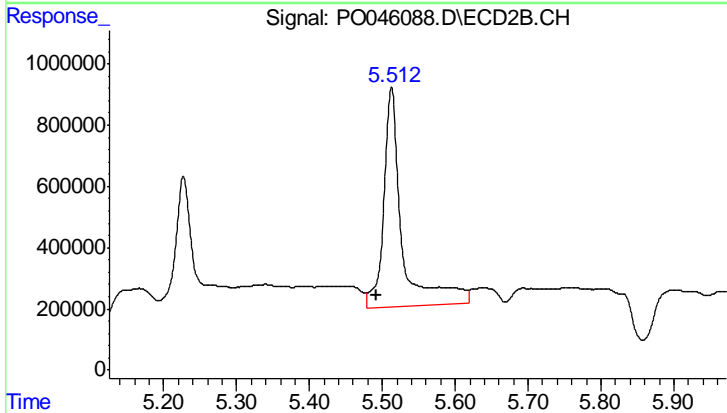
R.T.: 6.029 min
 Delta R.T.: -0.011 min
 Response: 10781717
 Conc: 1921.32 ng/ml



#26 AR-1254-1

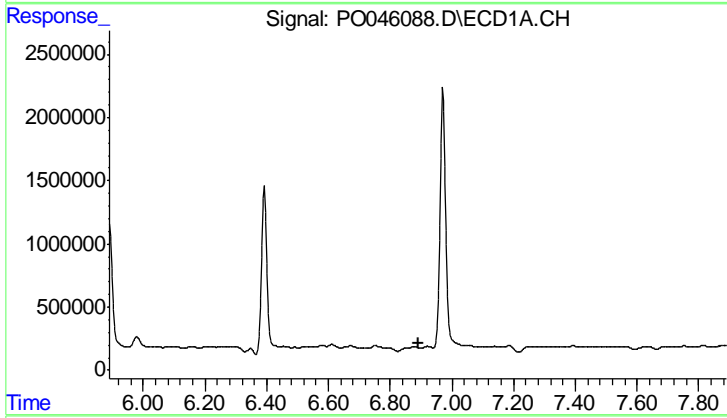
R.T.: 0.000 min
 Exp R.T.: 6.613 min
 Response: 0
 Conc: N.D.

Instrument :
 ECD_O
 ClientSampleId :
 CAS1-WC-L-01RE



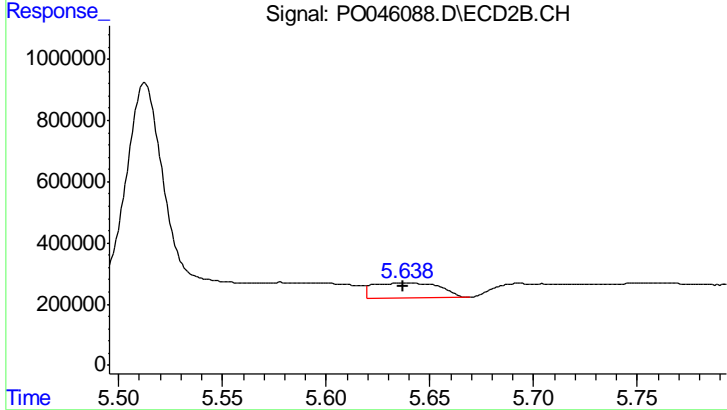
#26 AR-1254-1

R.T.: 5.513 min
 Delta R.T.: 0.021 min
 Response: 12832556
 Conc: 1001.90 ng/ml



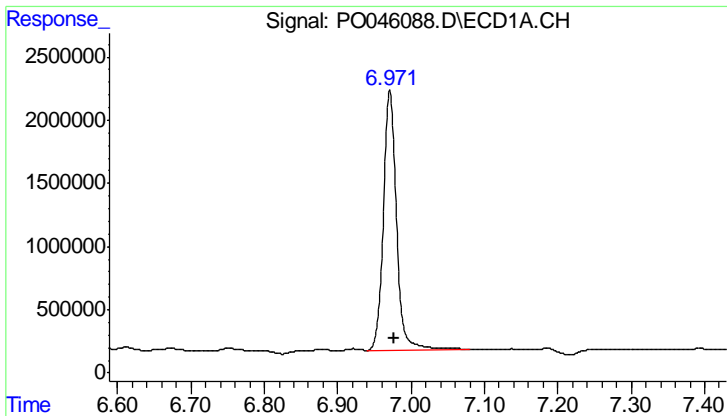
#27 AR-1254-2

R.T.: 0.000 min
 Exp R.T.: 6.890 min
 Response: 0
 Conc: N.D.



#27 AR-1254-2

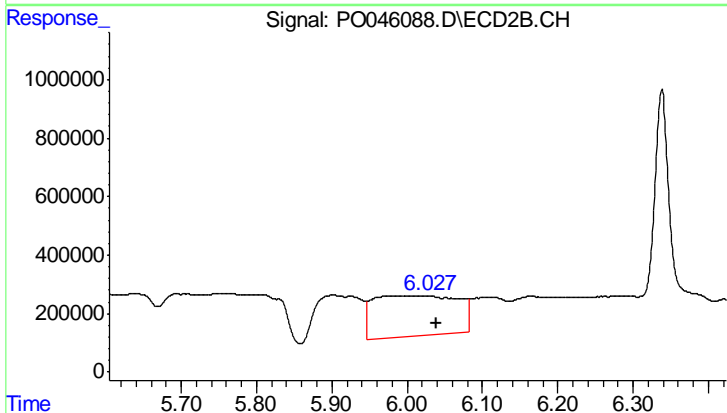
R.T.: 5.638 min
 Delta R.T.: 0.001 min
 Response: 1128836
 Conc: 102.24 ng/ml



#28 AR-1254-3

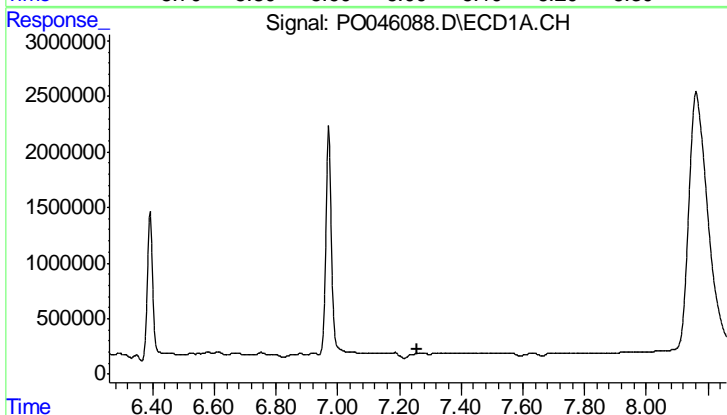
R.T.: 6.971 min
 Delta R.T.: -0.005 min
 Response: 25545986
 Conc: 755.23 ng/ml

Instrument :
 ECD_O
 ClientSampleId :
 CAS1-WC-L-01RE



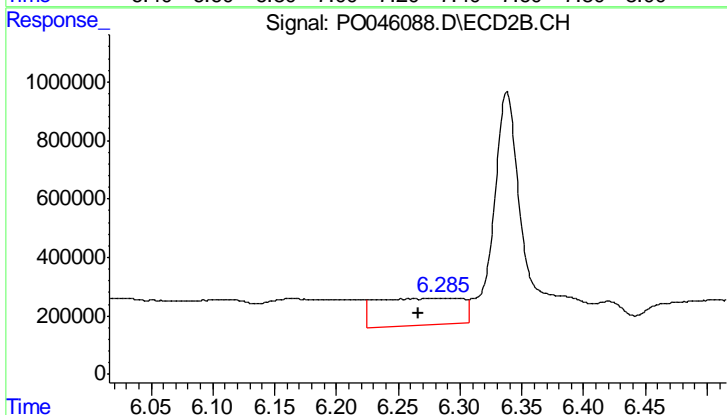
#28 AR-1254-3

R.T.: 6.029 min
 Delta R.T.: -0.011 min
 Response: 10781717
 Conc: 603.09 ng/ml



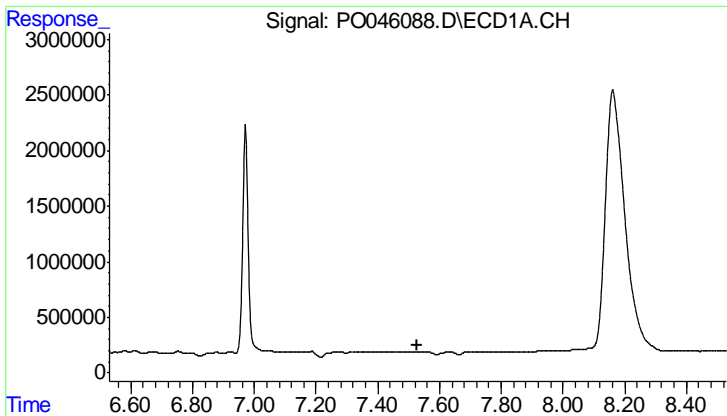
#29 AR-1254-4

R.T.: 0.000 min
 Exp R.T. : 7.260 min
 Response: 0
 Conc: N.D.



#29 AR-1254-4

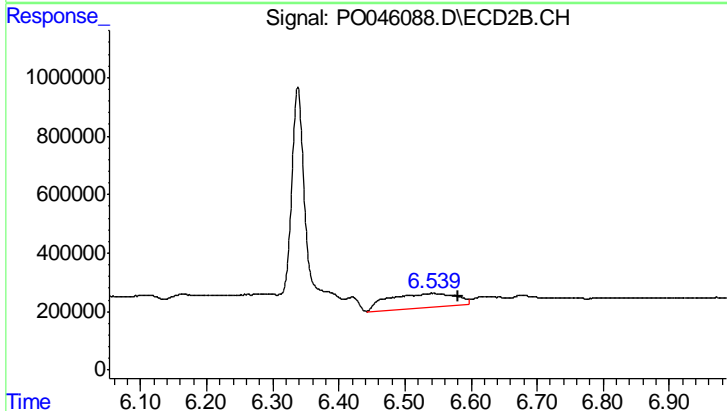
R.T.: 6.284 min
 Delta R.T.: 0.018 min
 Response: 4458331
 Conc: 401.58 ng/ml



#30 AR-1254-5

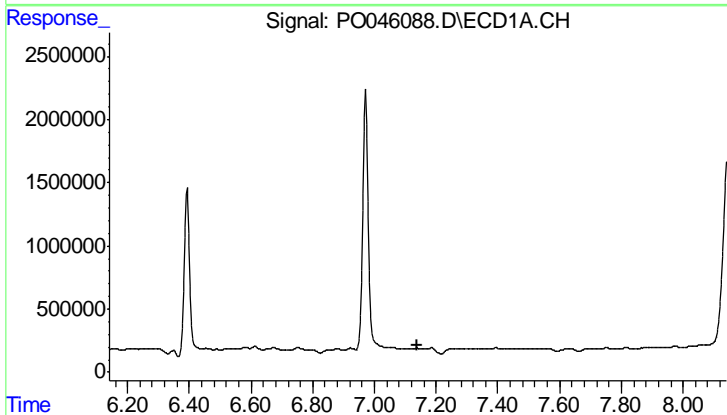
R.T.: 0.000 min
 Exp R.T.: 7.530 min
 Response: 0
 Conc: N.D.

Instrument :
 ECD_O
 ClientSampleId :
 CAS1-WC-L-01RE



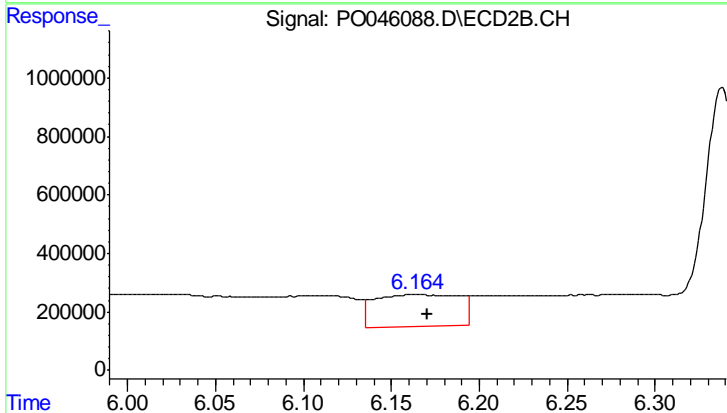
#30 AR-1254-5

R.T.: 6.542 min
 Delta R.T.: -0.038 min
 Response: 3384823
 Conc: 441.00 ng/ml



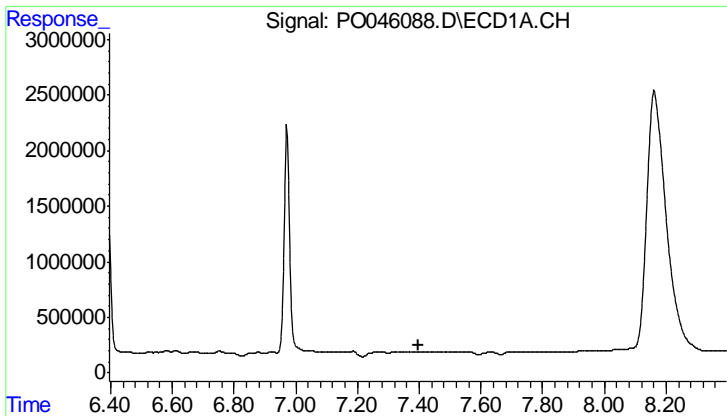
#31 AR-1260-1

R.T.: 0.000 min
 Exp R.T.: 7.141 min
 Response: 0
 Conc: N.D.



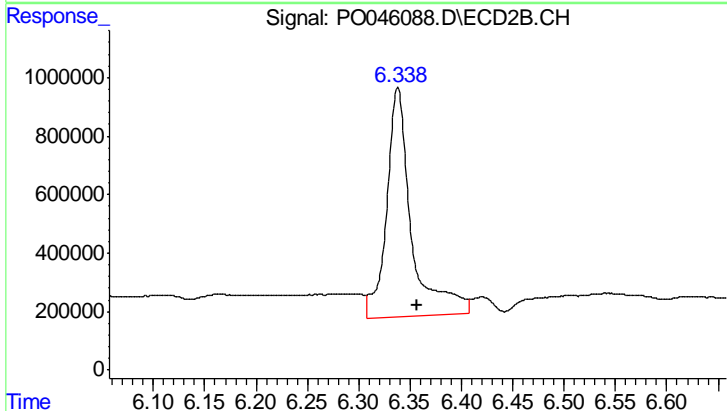
#31 AR-1260-1

R.T.: 6.163 min
 Delta R.T.: -0.007 min
 Response: 3651088
 Conc: 301.08 ng/ml

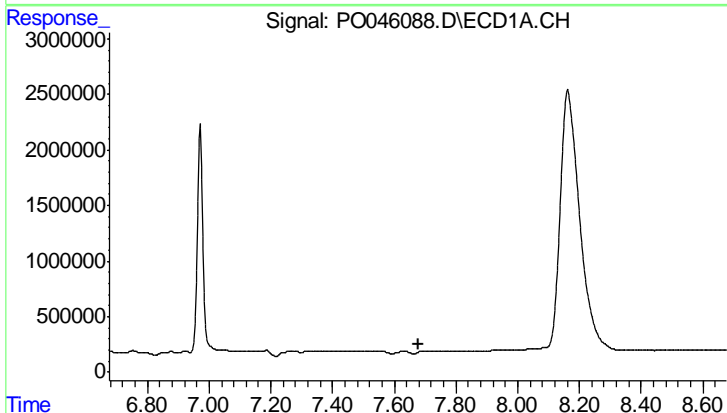


#32 AR-1260-2
 R.T.: 0.000 min
 Exp R.T.: 7.396 min
 Response: 0
 Conc: N.D.

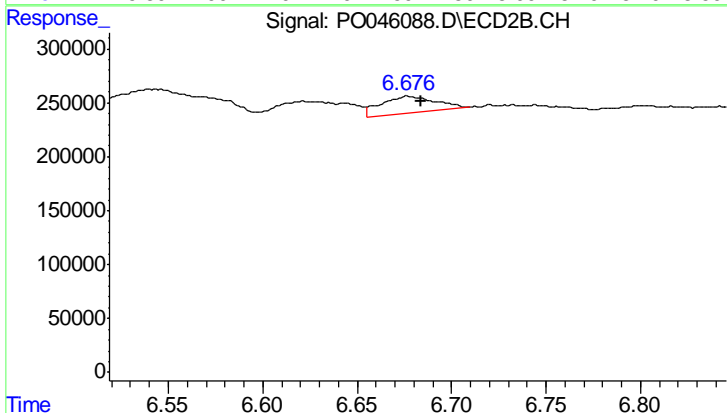
Instrument :
 ECD_O
 ClientSampleId :
 CAS1-WC-L-01RE



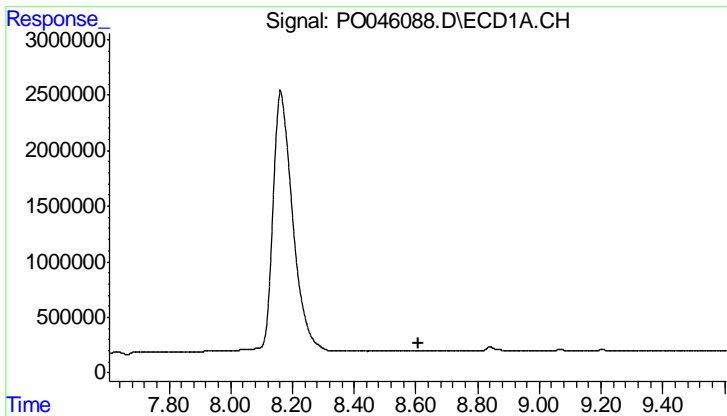
#32 AR-1260-2
 R.T.: 6.338 min
 Delta R.T.: -0.019 min
 Response: 13320169
 Conc: 903.03 ng/ml



#33 AR-1260-3
 R.T.: 0.000 min
 Exp R.T.: 7.677 min
 Response: 0
 Conc: N.D.



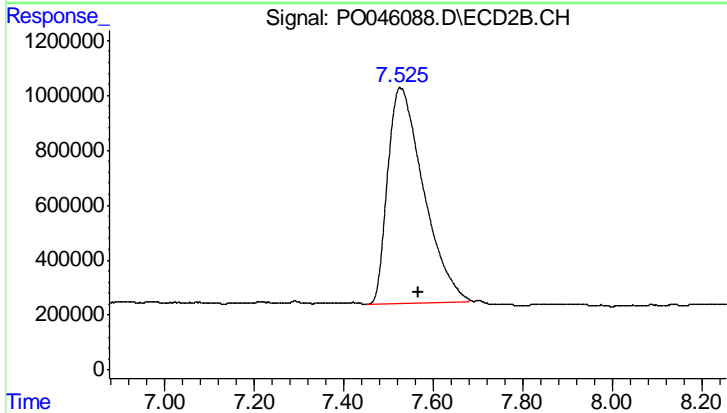
#33 AR-1260-3
 R.T.: 6.677 min
 Delta R.T.: -0.006 min
 Response: 322005
 Conc: 21.15 ng/ml



#35 AR-1260-5

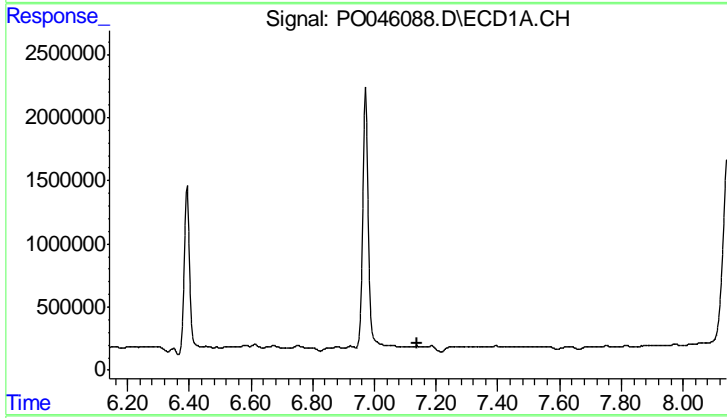
R.T.: 0.000 min
 Exp R.T.: 8.607 min
 Response: 0
 Conc: N.D.

Instrument :
 ECD_O
 ClientSampleId :
 CAS1-WC-L-01RE



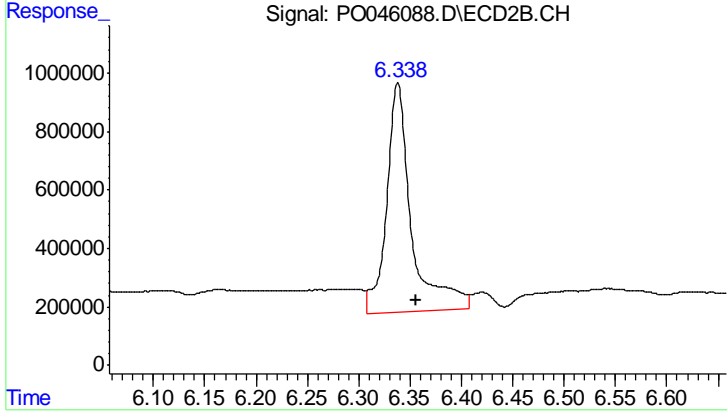
#35 AR-1260-5

R.T.: 7.526 min
 Delta R.T.: -0.041 min
 Response: 43828554
 Conc: 2707.34 ng/ml



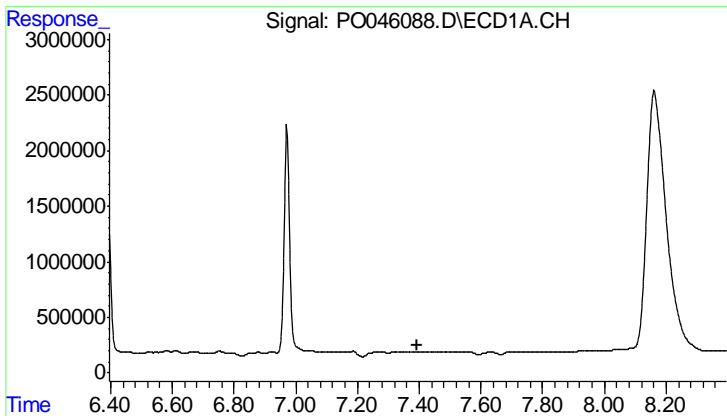
#36 AR-1262-1

R.T.: 0.000 min
 Exp R.T.: 7.141 min
 Response: 0
 Conc: N.D.



#36 AR-1262-1

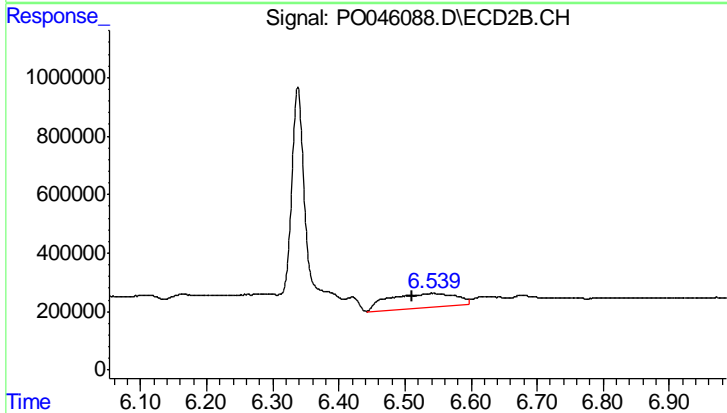
R.T.: 6.338 min
 Delta R.T.: -0.017 min
 Response: 13320169
 Conc: 1058.72 ng/ml



#37 AR-1262-2

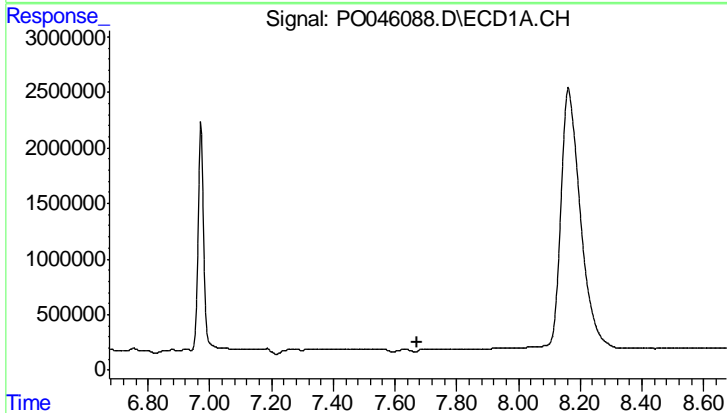
R.T.: 0.000 min
 Exp R.T.: 7.396 min
 Response: 0
 Conc: N.D.

Instrument :
 ECD_O
 ClientSampleId :
 CAS1-WC-L-01RE



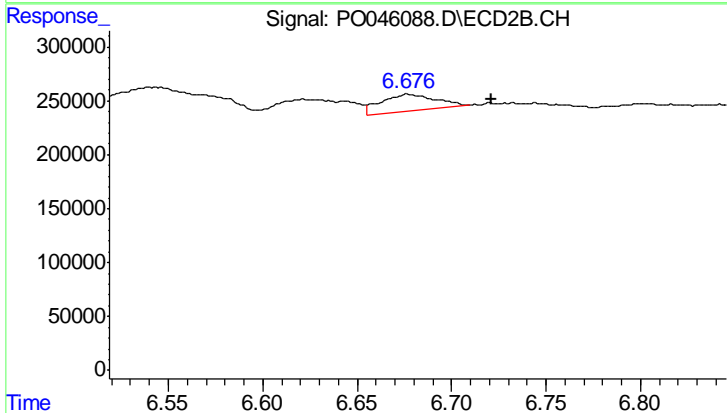
#37 AR-1262-2

R.T.: 6.542 min
 Delta R.T.: 0.030 min
 Response: 3384823
 Conc: 275.99 ng/ml



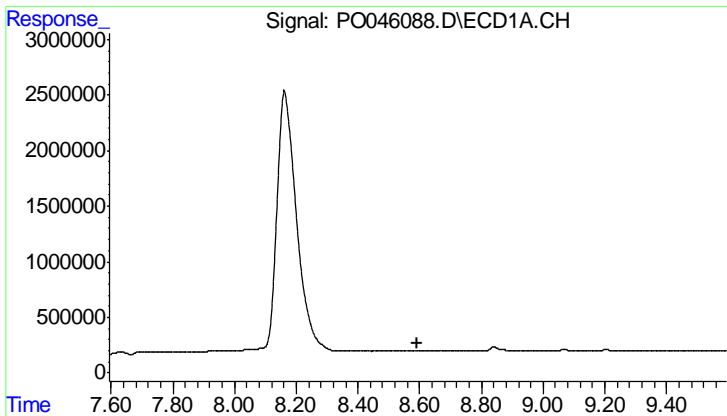
#38 AR-1262-3

R.T.: 0.000 min
 Exp R.T.: 7.674 min
 Response: 0
 Conc: N.D.



#38 AR-1262-3

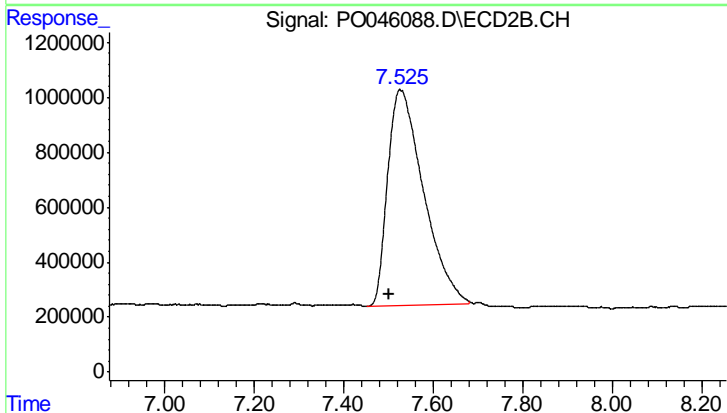
R.T.: 6.677 min
 Delta R.T.: -0.044 min
 Response: 322005
 Conc: 19.28 ng/ml



#41 AR-1268-1

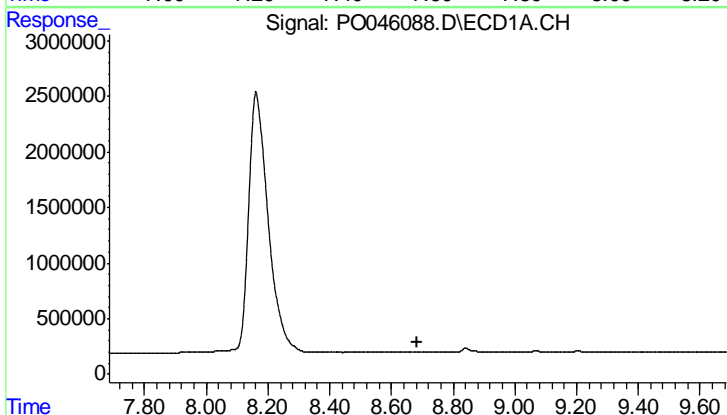
R.T.: 0.000 min
 Exp R.T.: 8.594 min
 Response: 0
 Conc: N.D.

Instrument :
 ECD_O
 ClientSampleId :
 CAS1-WC-L-01RE



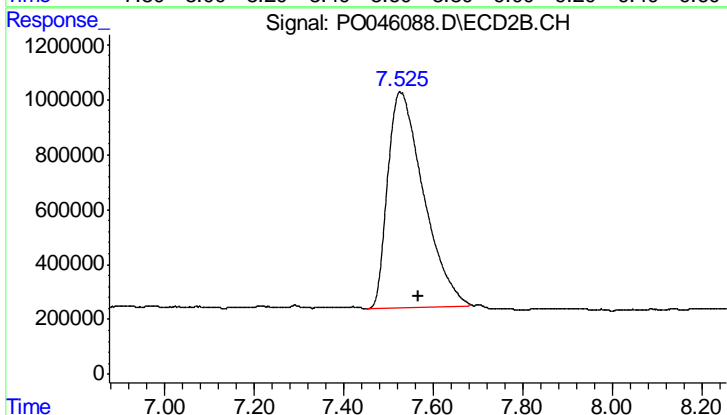
#41 AR-1268-1

R.T.: 7.526 min
 Delta R.T.: 0.024 min
 Response: 43828554
 Conc: 1737.32 ng/ml



#42 AR-1268-2

R.T.: 0.000 min
 Exp R.T.: 8.686 min
 Response: 0
 Conc: N.D.



#42 AR-1268-2

R.T.: 7.526 min
 Delta R.T.: -0.040 min
 Response: 43828554
 Conc: 1821.80 ng/ml