

Data Path : Z:\pestpcbsrv\HPCHEM1\ECD O\Data\PO062218\
 Data File : PO046071.D
 Signal(s) : Signal #1: ECD1A.CH Signal #2: ECD2B.CH
 Acq On : 22 Jun 2018 10:48
 Operator : SM/UA
 Sample : J3603-19RE
 Misc :
 ALS Vial : 12 Sample Multiplier: 1

Instrument :
 ECD_O
 ClientSampleId :
 26KV-TP-7RE

Integration File signal 1: autoint1.e
 Integration File signal 2: autoint2.e
 Quant Time: Jun 22 11:01:58 2018
 Quant Method : Z:\pestpcbsrv\HPCHEM1\ECD_O\methods\PO061918.M
 Quant Title : GC EXTRACTABLES
 QLast Update : Wed Jun 20 03:39:54 2018
 Response via : Initial Calibration
 Integrator: ChemStation 6890 Scale Mode: Small noise peaks clipped

Volume Inj. : 2 µl
 Signal #1 Phase : ZB-MR1 Signal #2 Phase: ZB-MR2
 Signal #1 Info : 30Mx0.32mmx 0.50µ Signal #2 Info : 30M x 0.32mm x 0.25µm

Compound	RT#1	RT#2	Resp#1	Resp#2	nq/ml	nq/ml

System Monitoring Compounds						
1) SA Tetrachlo...	4.381	3.609	9554395	4649126	19.980	18.493
2) SA Decachlor...	10.054	8.584	2653285	1183283	6.330	7.555

Target Compounds

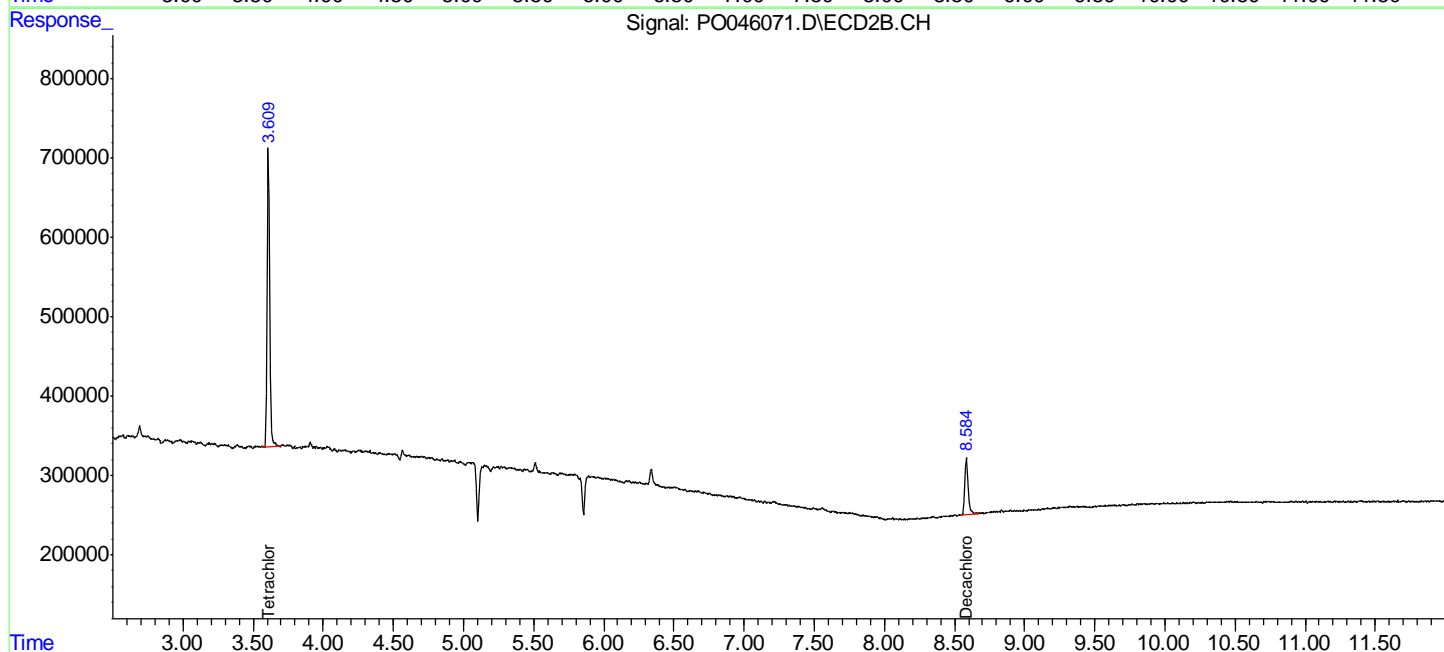
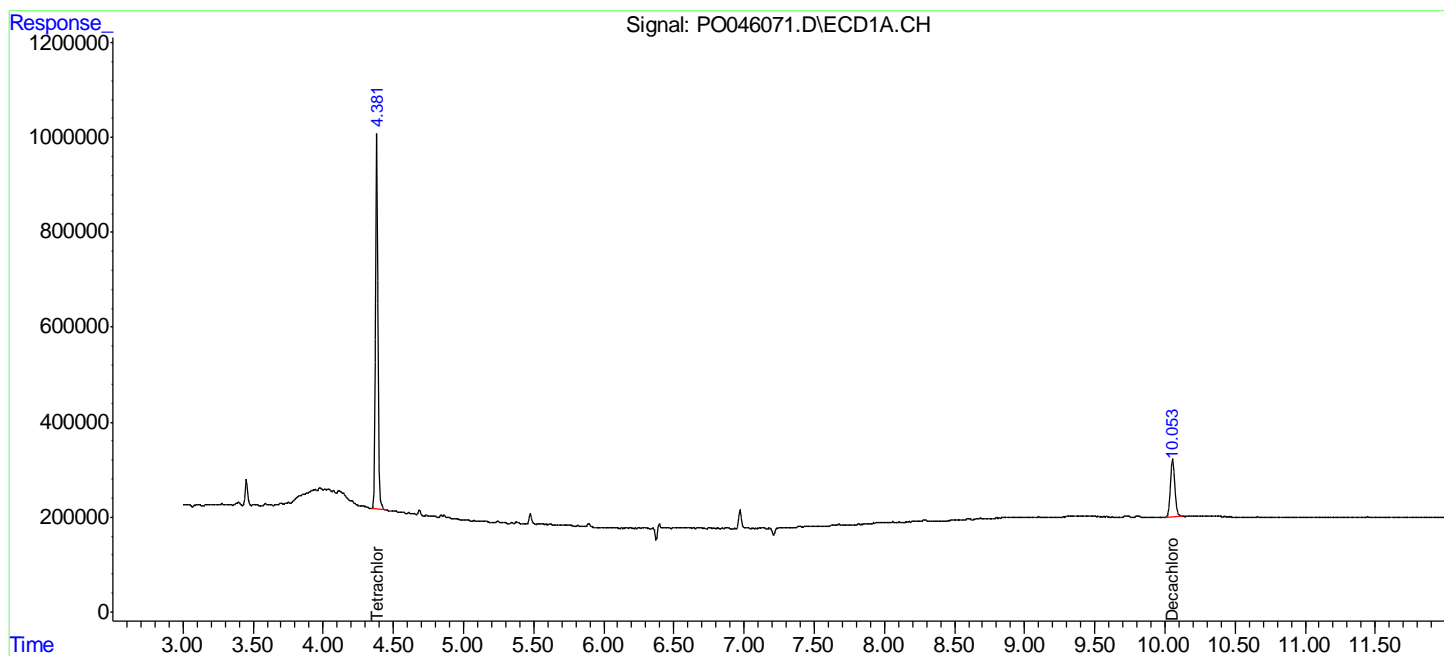
(f)=RT Delta > 1/2 Window (#)=Amounts differ by > 25% (m)=manual int.

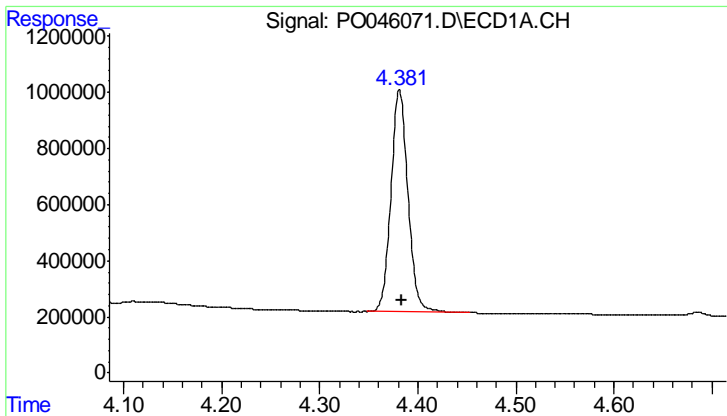
Data Path : Z:\pestpcbsrv\HPCHEM1\ECD O\Data\PO062218\
 Data File : PO046071.D
 Signal(s) : Signal #1: ECD1A.CH Signal #2: ECD2B.CH
 Acq On : 22 Jun 2018 10:48
 Operator : SM/UA
 Sample : J3603-19RE
 Misc :
 ALS Vial : 12 Sample Multiplier: 1

Instrument :
 ECD_O
 ClientSampleId :
 26KV-TP-7RE

Integration File signal 1: autoint1.e
 Integration File signal 2: autoint2.e
 Quant Time: Jun 22 11:01:58 2018
 Quant Method : Z:\pestpcbsrv\HPCHEM1\ECD_O\methods\PO061918.M
 Quant Title : GC EXTRACTABLES
 QLast Update : Wed Jun 20 03:39:54 2018
 Response via : Initial Calibration
 Integrator: ChemStation 6890 Scale Mode: Small noise peaks clipped

Volume Inj. : 2 µl
 Signal #1 Phase : ZB-MR1 Signal #2 Phase: ZB-MR2
 Signal #1 Info : 30Mx0.32mmx 0.50µ Signal #2 Info : 30M x 0.32mm x 0.25µm

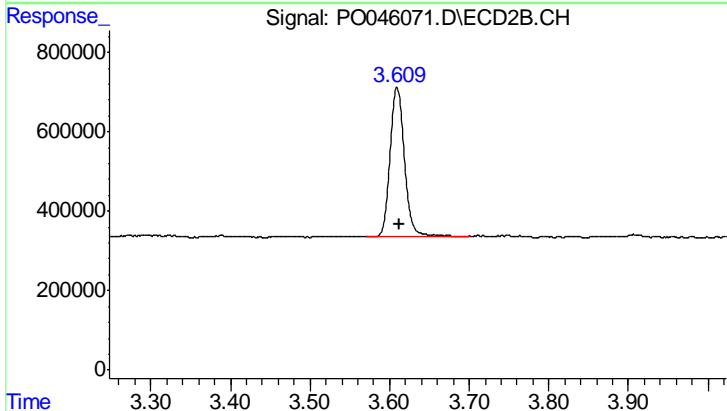




#1 Tetrachloro-m-xylene

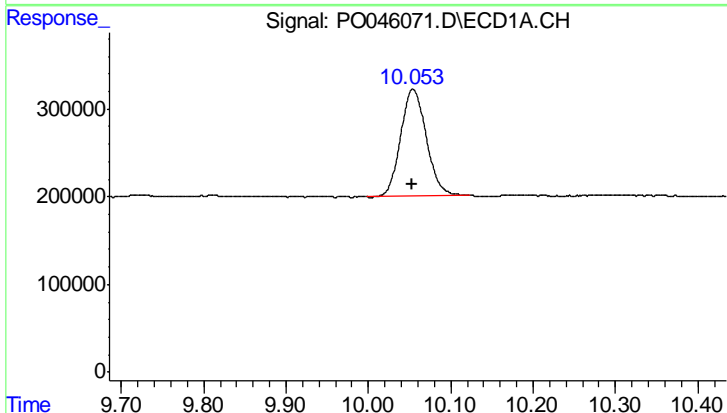
R.T.: 4.381 min
 Delta R.T.: -0.002 min
 Response: 9554395
 Conc: 19.98 ng/ml

Instrument :
 ECD_O
 ClientSampleId :
 26KV-TP-7RE



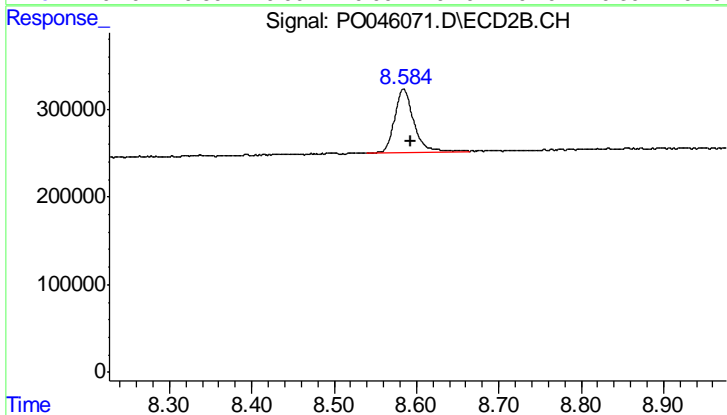
#1 Tetrachloro-m-xylene

R.T.: 3.609 min
 Delta R.T.: -0.002 min
 Response: 4649126
 Conc: 18.49 ng/ml



#2 Decachlorobiphenyl

R.T.: 10.054 min
 Delta R.T.: 0.000 min
 Response: 2653285
 Conc: 6.33 ng/ml



#2 Decachlorobiphenyl

R.T.: 8.584 min
 Delta R.T.: -0.009 min
 Response: 1183283
 Conc: 7.56 ng/ml