

Data Path : Z:\pestpcbsrv\HPCHEM1\ECD_0\Data\P0062220\
 Data File : P0069113.D
 Signal(s) : Signal #1: ECD1A.CH Signal #2: ECD2B.CH
 Acq On : 22 Jun 2020 21:42
 Operator : DD\AJ
 Sample : L3081-02
 Misc :
 ALS Vial : 34 Sample Multiplier: 1

Instrument :
 ECD_0
 ClientSampleId :

Integration File signal 1: autoint1.e
 Integration File signal 2: autoint2.e
 Quant Time: Jun 23 05:32:35 2020
 Quant Method : Z:\pestpcbsrv\HPCHEM1\ECD_0\methods\P0061820.M
 Quant Title : GC EXTRACTABLES
 QLast Update : Fri Jun 19 05:15:02 2020
 Response via : Initial Calibration
 Integrator: ChemStation 6890 Scale Mode: Small noise peaks clipped

Volume Inj. : 2 µl
 Signal #1 Phase : ZB-MR1 Signal #2 Phase: ZB-MR2
 Signal #1 Info : 30Mx0.32mmx 0.50µ Signal #2 Info : 30M x 0.32mm x 0.25µm

Compound	RT#1	RT#2	Resp#1	Resp#2	ng/ml	ng/ml

System Monitoring Compounds						
1) SA Tetrachlo...	4.406	3.566	693596	858520	23.446	22.305
2) SA Decachlor...	10.070	8.773	688207	789510	14.490	14.504
Target Compounds						
3) L1 AR-1016-1	5.649	0.000	72517	0	56.030	N.D. #
12) L3 AR-1232-2	5.458	0.000	90874	0	219.530	N.D. #
16) L4 AR-1242-1	5.649	0.000	72517	0	72.903	N.D. #
21) L5 AR-1248-1	5.649	0.000	72517	0	93.020	N.D. #
45) L9 AR-1268-5	9.737	0.000	4233	0	0.250	N.D. #

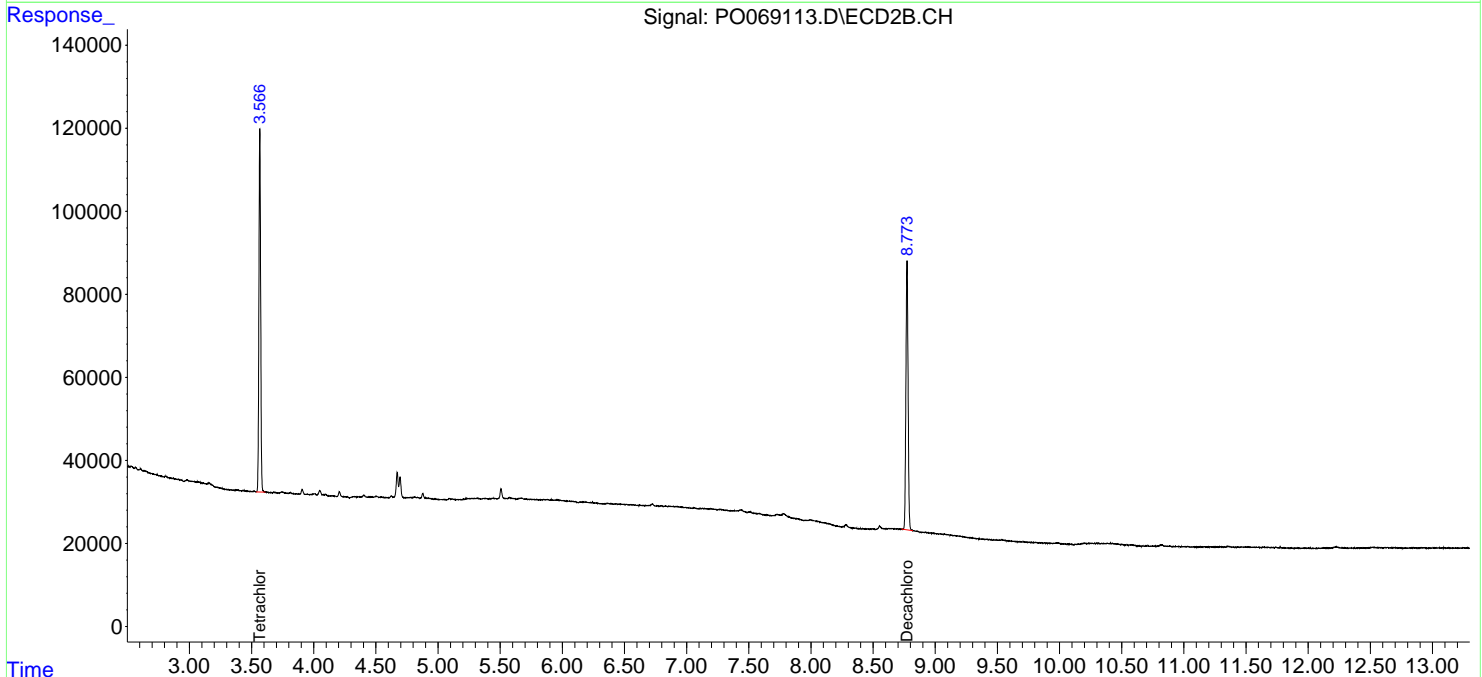
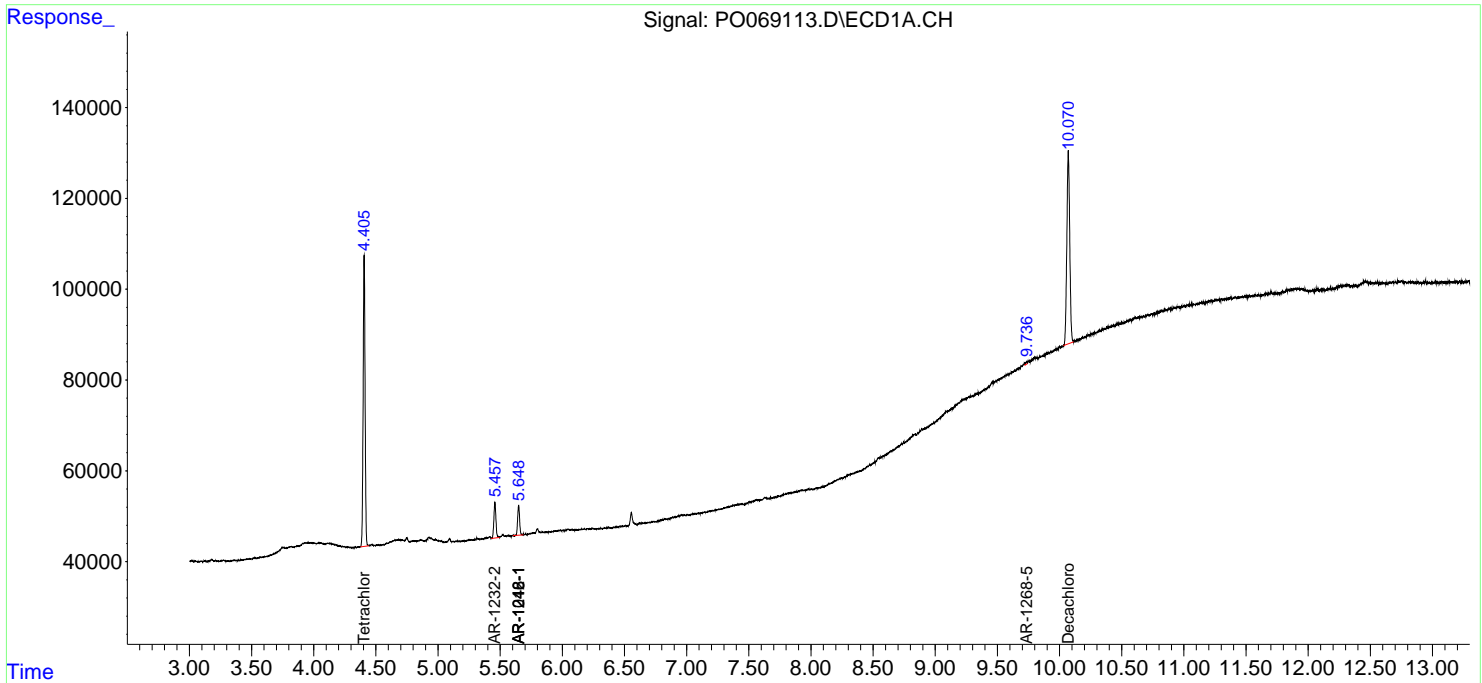
(f)=RT Delta > 1/2 Window (#)=Amounts differ by > 25% (m)=manual int.

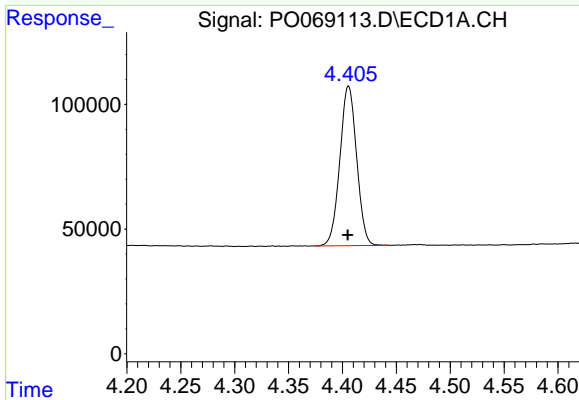
Data Path : Z:\pestpcbsrv\HPCHEM1\ECD_0\Data\P0062220\
 Data File : P0069113.D
 Signal(s) : Signal #1: ECD1A.CH Signal #2: ECD2B.CH
 Acq On : 22 Jun 2020 21:42
 Operator : DD\AJ
 Sample : L3081-02
 Misc :
 ALS Vial : 34 Sample Multiplier: 1

Instrument :
 ECD_O
 ClientSampled :

Integration File signal 1: autoint1.e
 Integration File signal 2: autoint2.e
 Quant Time: Jun 23 05:32:35 2020
 Quant Method : Z:\pestpcbsrv\HPCHEM1\ECD_0\methods\P0061820.M
 Quant Title : GC EXTRACTABLES
 QLast Update : Fri Jun 19 05:15:02 2020
 Response via : Initial Calibration
 Integrator: ChemStation 6890 Scale Mode: Small noise peaks clipped

Volume Inj. : 2 µl
 Signal #1 Phase : ZB-MR1 Signal #2 Phase: ZB-MR2
 Signal #1 Info : 30Mx0.32mmx 0.50µ Signal #2 Info : 30M x 0.32mm x 0.25µm

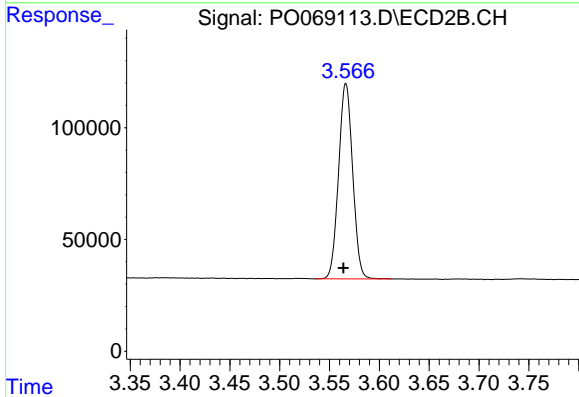




#1 Tetrachloro-m-xylene

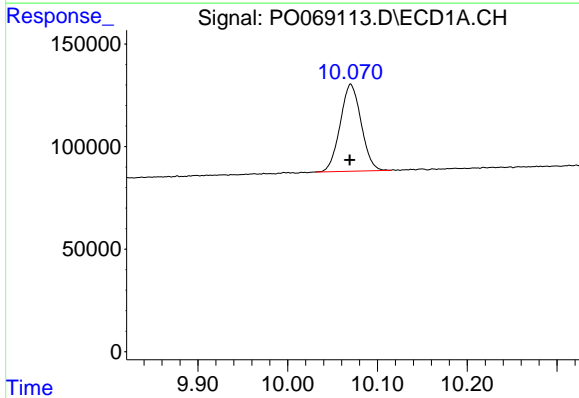
R.T.: 4.406 min
Delta R.T.: 0.000 min
Response: 693596
Conc: 23.45 ng/ml

Instrument :
ECD_O
ClientSampled :



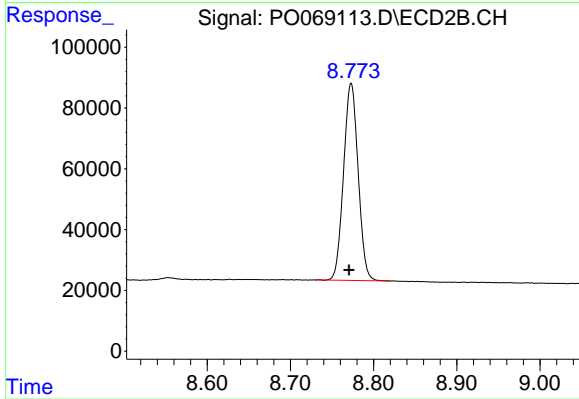
#1 Tetrachloro-m-xylene

R.T.: 3.566 min
Delta R.T.: 0.002 min
Response: 858520
Conc: 22.31 ng/ml



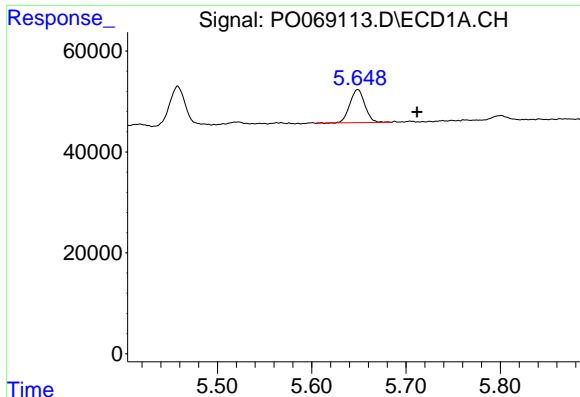
#2 Decachlorobiphenyl

R.T.: 10.070 min
Delta R.T.: 0.001 min
Response: 688207
Conc: 14.49 ng/ml



#2 Decachlorobiphenyl

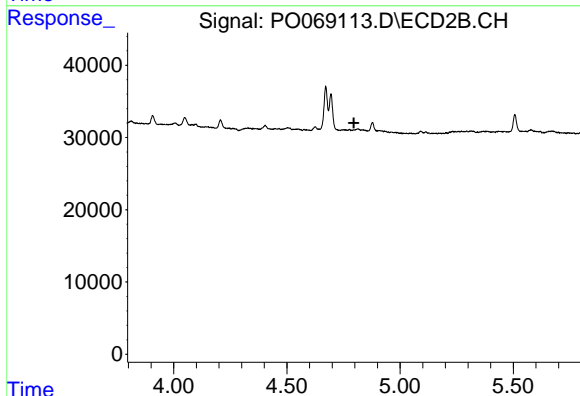
R.T.: 8.773 min
Delta R.T.: 0.003 min
Response: 789510
Conc: 14.50 ng/ml



#3 AR-1016-1

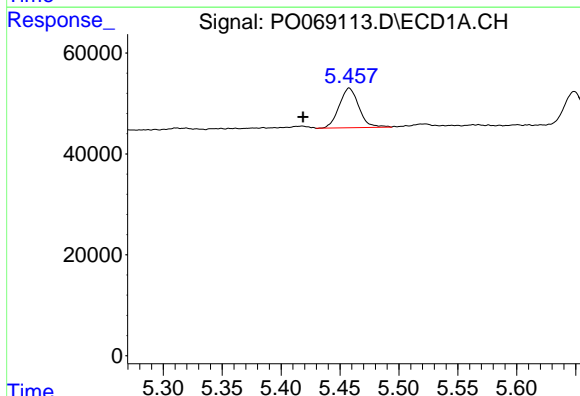
R.T.: 5.649 min
 Delta R.T.: -0.063 min
 Response: 72517
 Conc: 56.03 ng/ml

Instrument :
 ECD_O
 ClientSampleId :



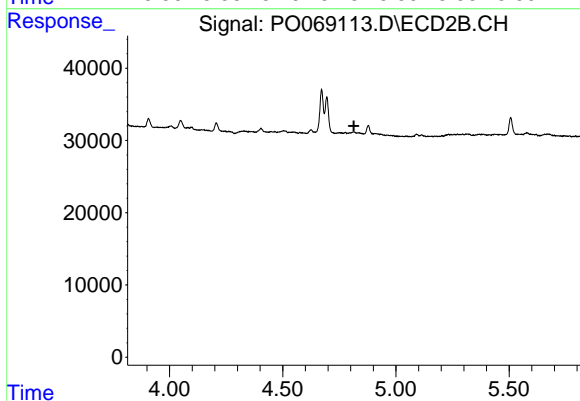
#3 AR-1016-1

R.T.: 0.000 min
 Exp R.T. : 4.796 min
 Response: 0
 Conc: N.D.



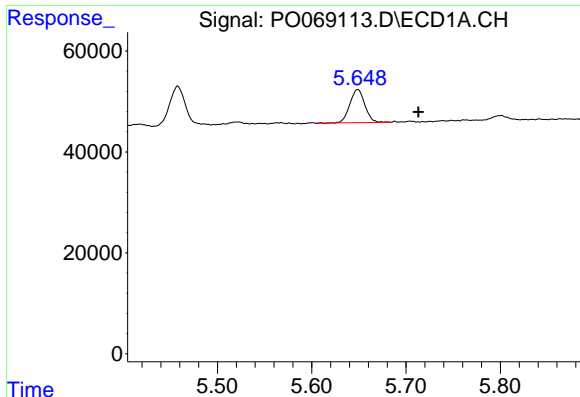
#12 AR-1232-2

R.T.: 5.458 min
 Delta R.T.: 0.039 min
 Response: 90874
 Conc: 219.53 ng/ml



#12 AR-1232-2

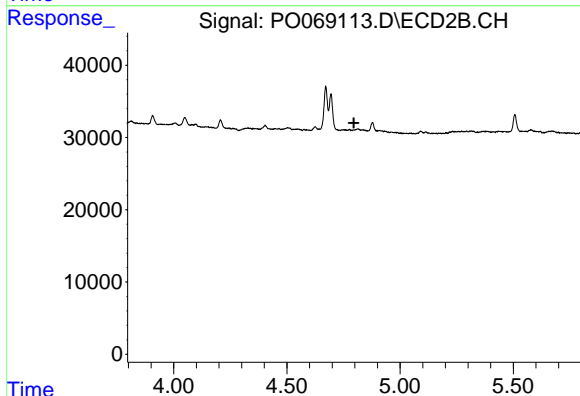
R.T.: 0.000 min
 Exp R.T. : 4.814 min
 Response: 0
 Conc: N.D.



#16 AR-1242-1

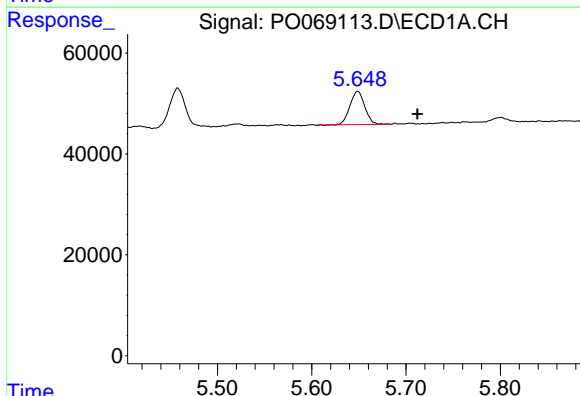
R.T.: 5.649 min
 Delta R.T.: -0.064 min
 Response: 72517
 Conc: 72.90 ng/ml

Instrument :
 ECD_O
 ClientSampleId :



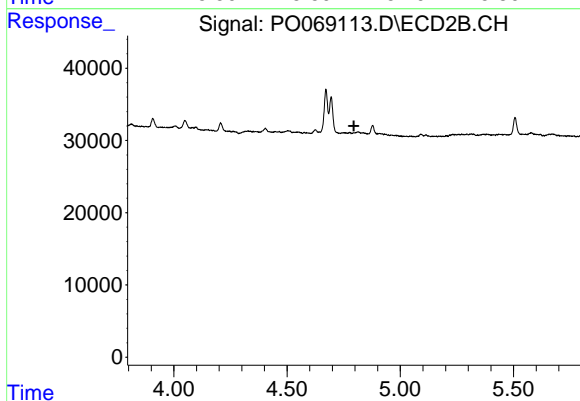
#16 AR-1242-1

R.T.: 0.000 min
 Exp R.T. : 4.796 min
 Response: 0
 Conc: N.D.



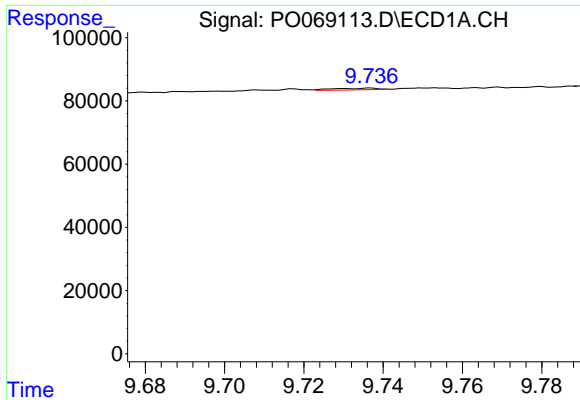
#21 AR-1248-1

R.T.: 5.649 min
 Delta R.T.: -0.063 min
 Response: 72517
 Conc: 93.02 ng/ml



#21 AR-1248-1

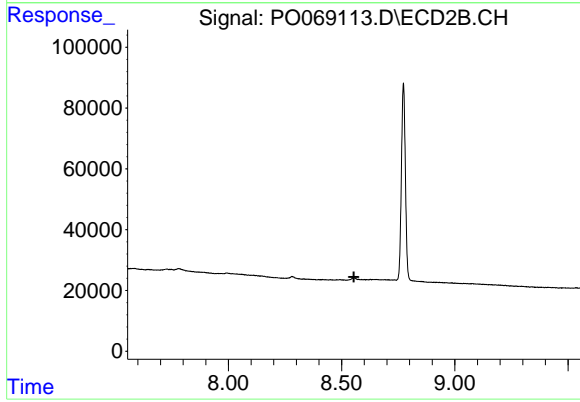
R.T.: 0.000 min
 Exp R.T. : 4.795 min
 Response: 0
 Conc: N.D.



#45 AR-1268-5

R.T.: 9.737 min
Delta R.T.: -0.063 min
Response: 4233
Conc: 0.25 ng/ml

Instrument :
ECD_O
ClientSampleId :



#45 AR-1268-5

R.T.: 0.000 min
Exp R.T. : 8.554 min
Response: 0
Conc: N.D.