

Data Path : Z:\pestpcbsrv\HPCHEM1\ECD_0\Data\P0062420\
 Data File : P0069159.D
 Signal(s) : Signal #1: ECD1A.CH Signal #2: ECD2B.CH
 Acq On : 24 Jun 2020 13:10
 Operator : DD\AJ
 Sample : AR1660CCC500
 Misc :
 ALS Vial : 3 Sample Multiplier: 1

Instrument :
 ECD_0
 ClientSampled :
 AR1660CCC500

Integration File signal 1: autoint1.e
 Integration File signal 2: autoint2.e
 Quant Time: Jun 24 18:01:13 2020
 Quant Method : Z:\pestpcbsrv\HPCHEM1\ECD_0\methods\P0061820.M
 Quant Title : GC EXTRACTABLES
 QLast Update : Fri Jun 19 05:15:02 2020
 Response via : Initial Calibration
 Integrator: ChemStation 6890 Scale Mode: Small noise peaks clipped

Volume Inj. : 2 µl
 Signal #1 Phase : ZB-MR1 Signal #2 Phase: ZB-MR2
 Signal #1 Info : 30Mx0.32mmx 0.50µ Signal #2 Info : 30M x 0.32mm x 0.25µm

Compound	RT#1	RT#2	Resp#1	Resp#2	ng/ml	ng/ml
System Monitoring Compounds						
1) SA Tetrachlo...	4.405	3.565	1708474	2024528	57.752	52.600
2) SA Decachlor...	10.071	8.773	2359368	2491502	49.675	45.770
Target Compounds						
3) L1 AR-1016-1	5.712	4.797	772769	800980	597.075	529.856
4) L1 AR-1016-2	5.733	4.815	1089894	1106162	593.844	521.693
5) L1 AR-1016-3	5.797	5.000	668330	603465	597.514	535.544
6) L1 AR-1016-4	5.903	5.057	559711	532325	596.903	541.625
7) L1 AR-1016-5	6.214	5.278	549781	637295	545.493	523.567
8) L2 AR-1221-1	4.654	3.817	58323	70394	168.869	154.757
9) L2 AR-1221-2	4.754	3.914	89480	104243	342.988	303.962
10) L2 AR-1221-3	4.841	4.000	344170	391250	392.921	364.251
11) L3 AR-1232-1	4.841	4.000	344170	391250	471.869	444.262
12) L3 AR-1232-2	5.418	4.815	494169	1106162	1193.800	1208.444
13) L3 AR-1232-3	5.733	5.000	1089894	603465	1325.556	1230.735
14) L3 AR-1232-4	5.903	5.099	559711	563787	1350.553	1332.888
15) L3 AR-1232-5	6.003	5.278	441435	637295	1556.226	1302.954
16) L4 AR-1242-1	5.712	4.797	772769	800980	776.876	724.090
17) L4 AR-1242-2	5.733	4.815	1089894	1106162	785.826	723.090
18) L4 AR-1242-3	5.797	5.000	668330	603465	774.830	725.400
19) L4 AR-1242-4	5.903	5.099	559711	563787	779.184	709.724
20) L4 AR-1242-5	6.678	5.654	96068	532934	107.659	478.883 #
21) L5 AR-1248-1	5.712	4.797	772769	800980	991.248	926.078
22) L5 AR-1248-2	6.003	5.057	441435	532325	431.700	441.267
23) L5 AR-1248-3	6.214	5.099	549781	563787	444.400	498.289
24) L5 AR-1248-4	6.640	5.278	117466	637295	78.104	440.721 #
25) L5 AR-1248-5	6.678	5.695	96068	81836	66.340	56.567
26) L6 AR-1254-1	6.609	5.654	351531	532934	232.039	226.674
27) L6 AR-1254-2	6.836	5.815	418176	439075	174.348	208.188
28) L6 AR-1254-3	7.213	6.227	264245	259309	99.529	75.203
29) L6 AR-1254-4	7.507	6.467	162628	142767	76.262	61.223
30) L6 AR-1254-5	7.930	6.890	1440835	1640099	642.801	506.566
31) L7 AR-1260-1	7.377	6.364	995029	1162154	521.386	496.657
32) L7 AR-1260-2	7.644	6.564	1255024	1442765	536.216	506.851
33) L7 AR-1260-3	8.004	6.713	974896	1325053	548.755	492.663
34) L7 AR-1260-4	8.231	7.192	1066735	1181332	511.515	493.071
35) L7 AR-1260-5	8.546	7.442	2310417	2839694	525.640	490.161
36) L8 AR-1262-1	8.004	6.890	974896	1640099	384.426	936.083 #
37) L8 AR-1262-2	8.546	7.442	2310417	2839694	481.084	469.592
39) L8 AR-1262-4	8.880	7.786	-490634	2153493	N.D.	464.589 #
40) L8 AR-1262-5	9.461	8.285	720086	848948	401.328	365.382
42) L9 AR-1268-2	8.880	7.786	-490634	2153493	N.D.	322.017 #
43) L9 AR-1268-3	9.087	7.992	21034	41852	4.494	7.545 #

Data Path : Z:\pestpcbsrv\HPCHEM1\ECD_0\Data\P0062420\
 Data File : P0069159.D
 Signal(s) : Signal #1: ECD1A.CH Signal #2: ECD2B.CH
 Acq On : 24 Jun 2020 13:10
 Operator : DD\AJ
 Sample : AR1660CCC500
 Misc :
 ALS Vial : 3 Sample Multiplier: 1

Instrument :
 ECD_0
 ClientSampleId :
 AR1660CCC500

Integration File signal 1: autoint1.e
 Integration File signal 2: autoint2.e
 Quant Time: Jun 24 18:01:13 2020
 Quant Method : Z:\pestpcbsrv\HPCHEM1\ECD_0\methods\P0061820.M
 Quant Title : GC EXTRACTABLES
 QLast Update : Fri Jun 19 05:15:02 2020
 Response via : Initial Calibration
 Integrator: ChemStation 6890 Scale Mode: Small noise peaks clipped

Volume Inj. : 2 µl
 Signal #1 Phase : ZB-MR1 Signal #2 Phase: ZB-MR2
 Signal #1 Info : 30Mx0.32mmx 0.50µ Signal #2 Info : 30M x 0.32mm x 0.25µm

	Compound	RT#1	RT#2	Resp#1	Resp#2	ng/ml	ng/ml
44)	L9 AR-1268-4	9.461	8.285	720086	848948	343.636	315.265
45)	L9 AR-1268-5	9.800	8.554	199232	245288	11.767	13.453

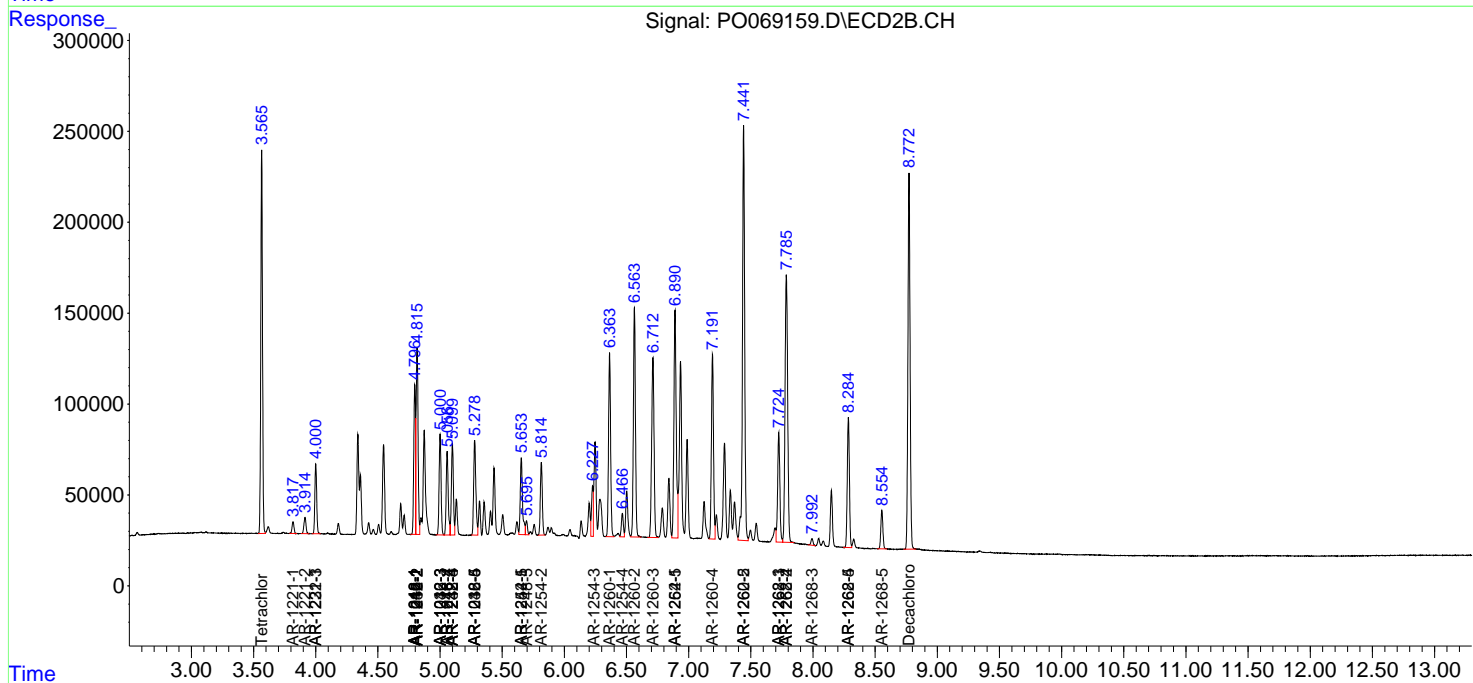
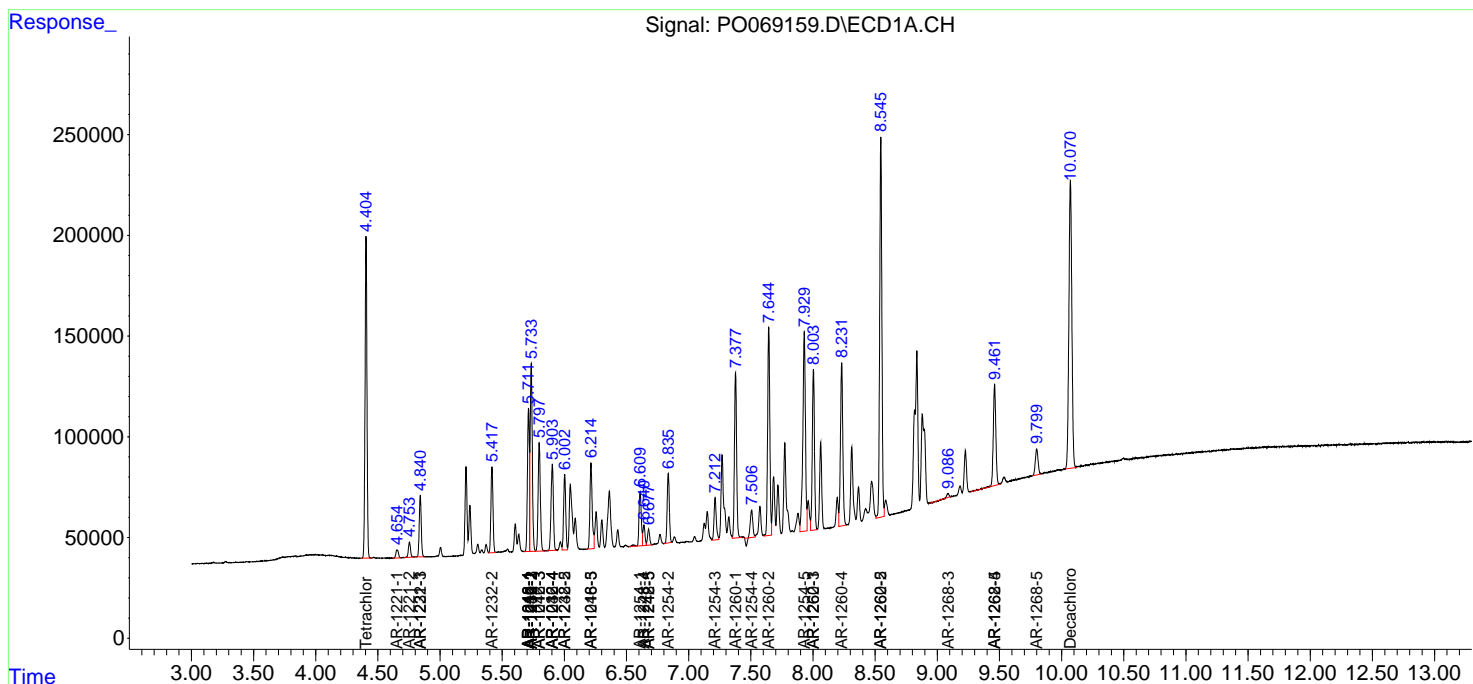
(f)=RT Delta > 1/2 Window (#)=Amounts differ by > 25% (m)=manual int.

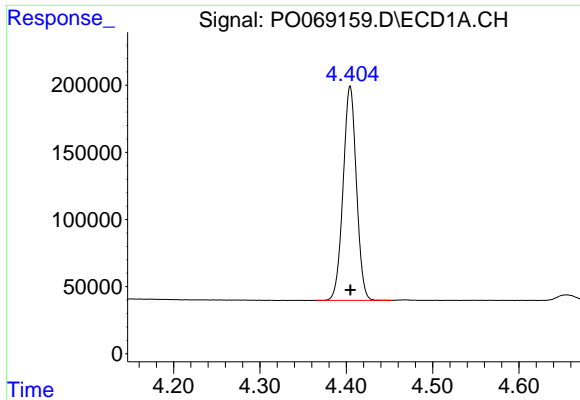
Data Path : Z:\pestpcbsrv\HPCHEM1\ECD_O\Data\P0062420\
 Data File : P0069159.D
 Signal(s) : Signal #1: ECD1A.CH Signal #2: ECD2B.CH
 Acq On : 24 Jun 2020 13:10
 Operator : DD\AJ
 Sample : AR1660CCC500
 Misc :
 ALS Vial : 3 Sample Multiplier: 1

Instrument :
 ECD_O
 ClientSampled :
 AR1660CCC500

Integration File signal 1: autoint1.e
 Integration File signal 2: autoint2.e
 Quant Time: Jun 24 18:01:13 2020
 Quant Method : Z:\pestpcbsrv\HPCHEM1\ECD_O\methods\P0061820.M
 Quant Title : GC EXTRACTABLES
 QLast Update : Fri Jun 19 05:15:02 2020
 Response via : Initial Calibration
 Integrator: ChemStation 6890 Scale Mode: Small noise peaks clipped

Volume Inj. : 2 µl
 Signal #1 Phase : ZB-MR1 Signal #2 Phase: ZB-MR2
 Signal #1 Info : 30Mx0.32mmx 0.50µ Signal #2 Info : 30M x 0.32mm x 0.25µm

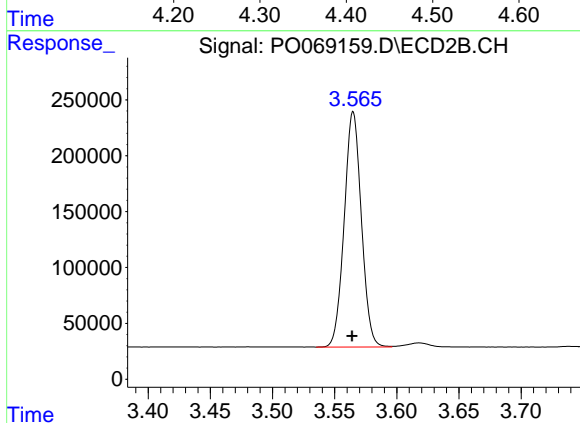




#1 Tetrachloro-m-xylene

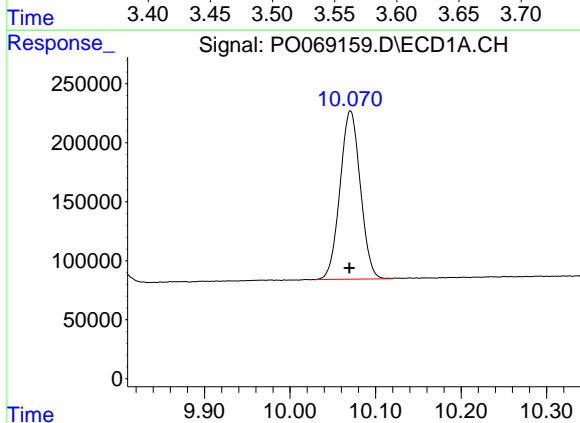
R.T.: 4.405 min
 Delta R.T.: 0.000 min
 Response: 1708474
 Conc: 57.75 ng/ml

Instrument :
 ECD_O
 ClientSampleId :
 AR1660CCC500



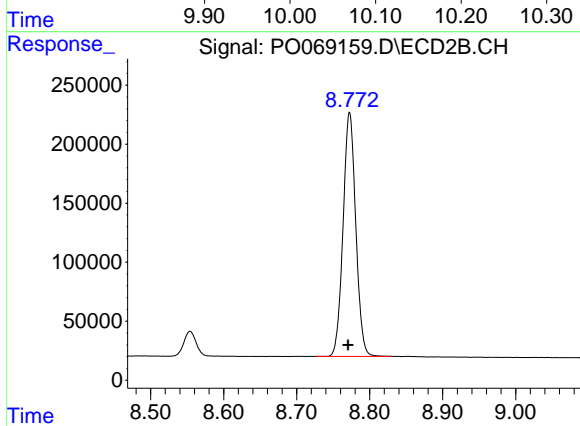
#1 Tetrachloro-m-xylene

R.T.: 3.565 min
 Delta R.T.: 0.000 min
 Response: 2024528
 Conc: 52.60 ng/ml



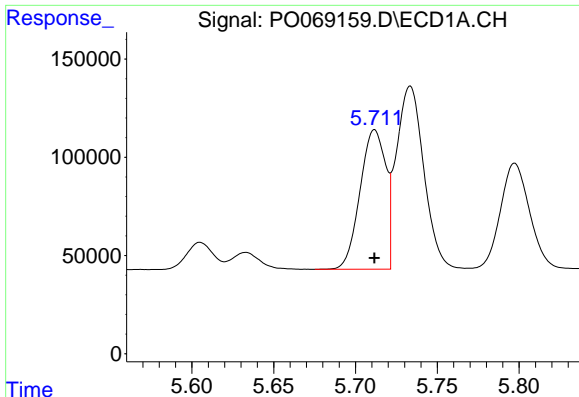
#2 Decachlorobiphenyl

R.T.: 10.071 min
 Delta R.T.: 0.002 min
 Response: 2359368
 Conc: 49.67 ng/ml



#2 Decachlorobiphenyl

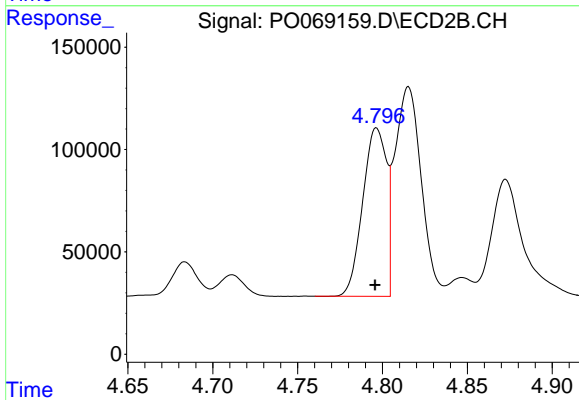
R.T.: 8.773 min
 Delta R.T.: 0.002 min
 Response: 2491502
 Conc: 45.77 ng/ml



#3 AR-1016-1

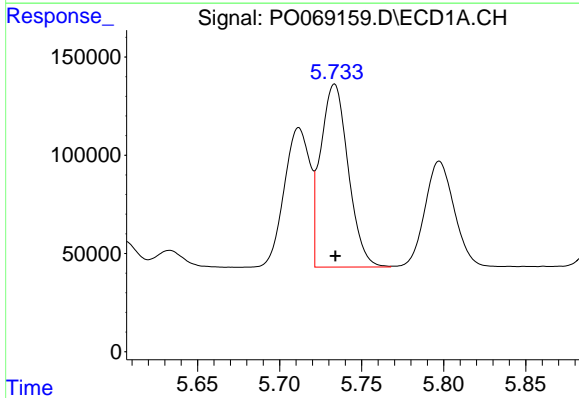
R.T.: 5.712 min
 Delta R.T.: 0.000 min
 Response: 772769
 Conc: 597.07 ng/ml

Instrument :
 ECD_O
 ClientSampleId :
 AR1660CCC500



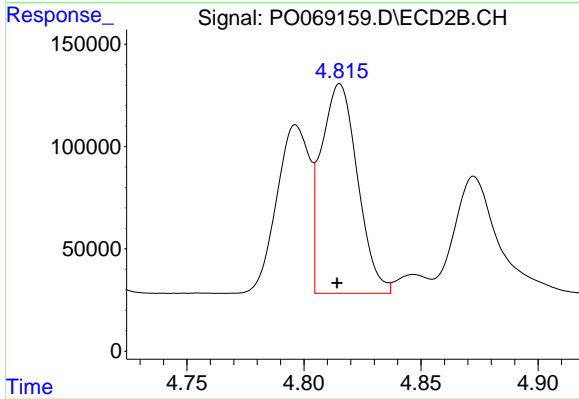
#3 AR-1016-1

R.T.: 4.797 min
 Delta R.T.: 0.000 min
 Response: 800980
 Conc: 529.86 ng/ml



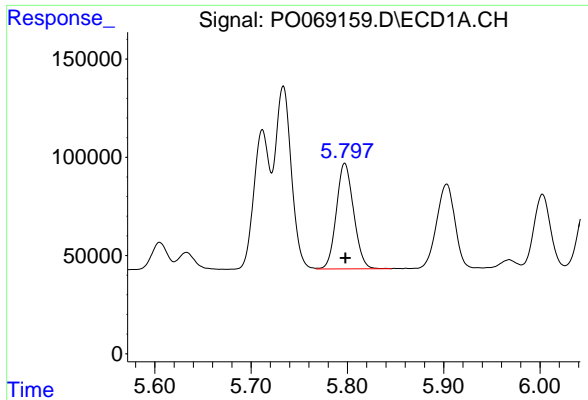
#4 AR-1016-2

R.T.: 5.733 min
 Delta R.T.: 0.000 min
 Response: 1089894
 Conc: 593.84 ng/ml



#4 AR-1016-2

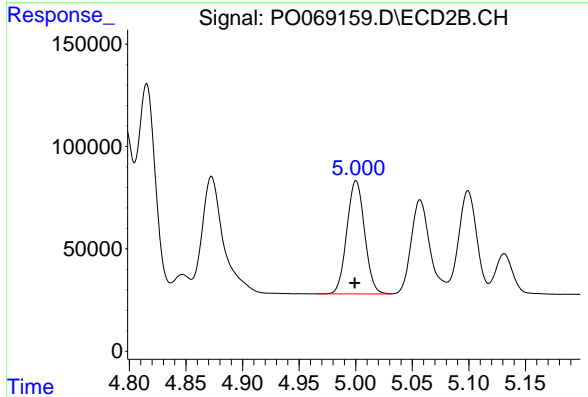
R.T.: 4.815 min
 Delta R.T.: 0.001 min
 Response: 1106162
 Conc: 521.69 ng/ml



#5 AR-1016-3

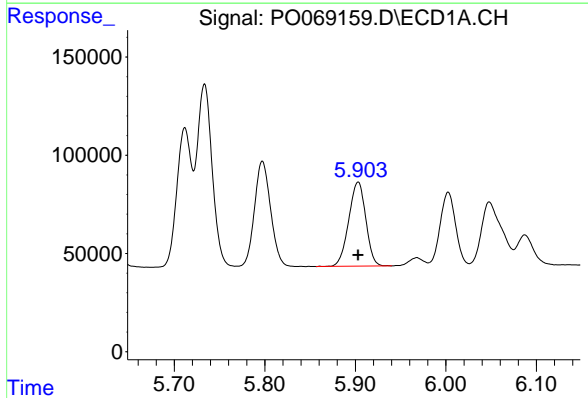
R.T.: 5.797 min
Delta R.T.: 0.000 min
Response: 668330
Conc: 597.51 ng/ml

Instrument :
ECD_O
ClientSampleId :
AR1660CCC500



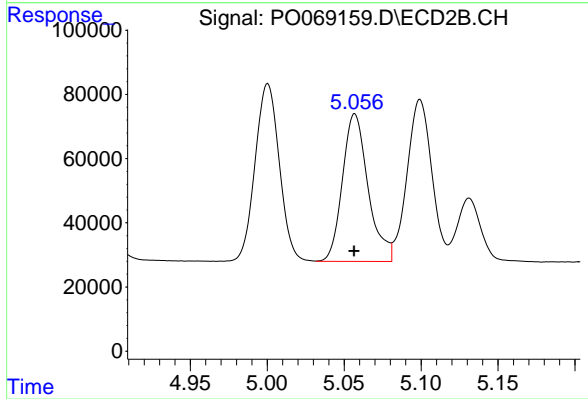
#5 AR-1016-3

R.T.: 5.000 min
Delta R.T.: 0.001 min
Response: 603465
Conc: 535.54 ng/ml



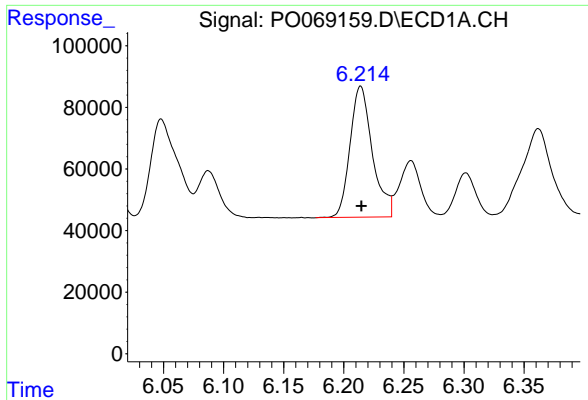
#6 AR-1016-4

R.T.: 5.903 min
Delta R.T.: 0.000 min
Response: 559711
Conc: 596.90 ng/ml



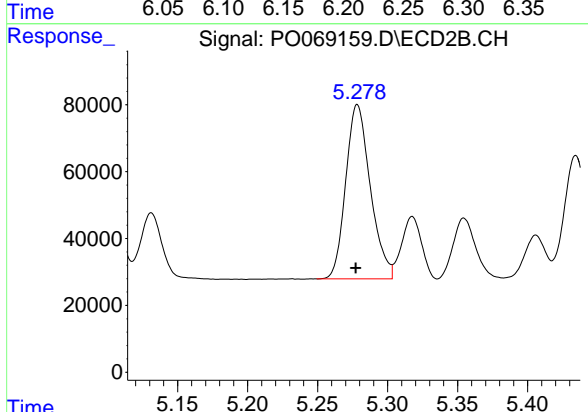
#6 AR-1016-4

R.T.: 5.057 min
Delta R.T.: 0.000 min
Response: 532325
Conc: 541.63 ng/ml

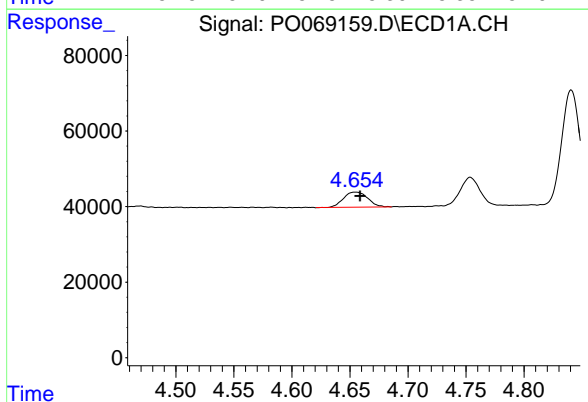


#7 AR-1016-5
 R.T.: 6.214 min
 Delta R.T.: 0.000 min
 Response: 549781
 Conc: 545.49 ng/ml

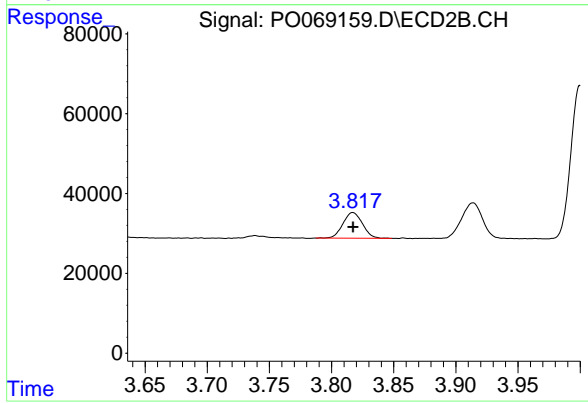
Instrument :
 ECD_O
 ClientSampleId :
 AR1660CCC500



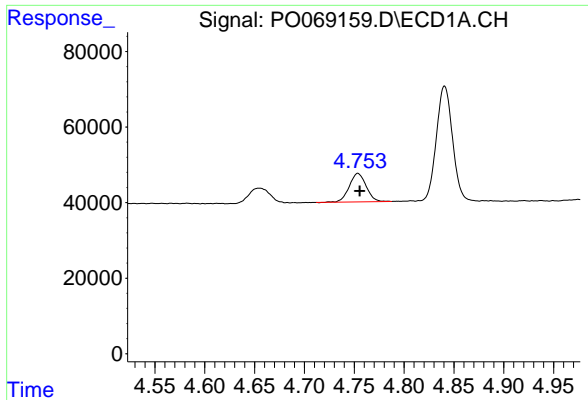
#7 AR-1016-5
 R.T.: 5.278 min
 Delta R.T.: 0.001 min
 Response: 637295
 Conc: 523.57 ng/ml



#8 AR-1221-1
 R.T.: 4.654 min
 Delta R.T.: -0.004 min
 Response: 58323
 Conc: 168.87 ng/ml

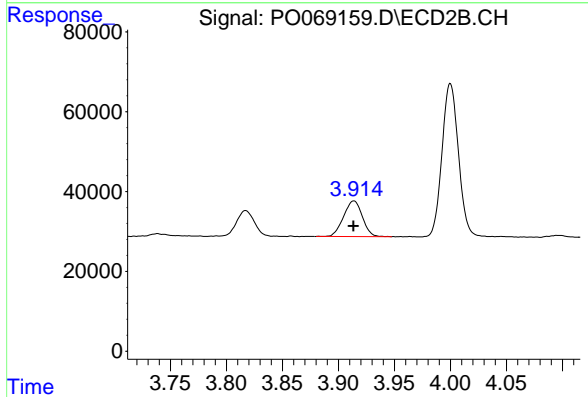


#8 AR-1221-1
 R.T.: 3.817 min
 Delta R.T.: 0.000 min
 Response: 70394
 Conc: 154.76 ng/ml

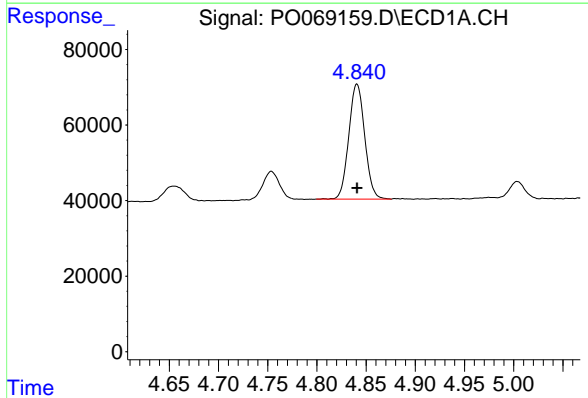


#9 AR-1221-2
 R.T.: 4.754 min
 Delta R.T.: -0.002 min
 Response: 89480
 Conc: 342.99 ng/ml

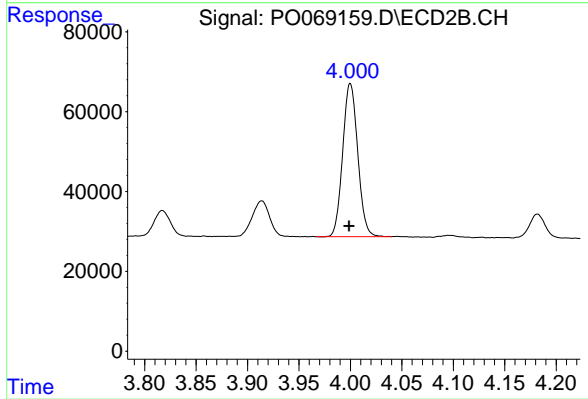
Instrument :
 ECD_O
 ClientSampled :
 AR1660CCC500



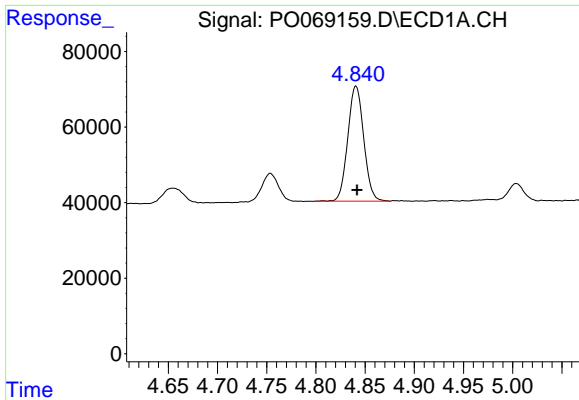
#9 AR-1221-2
 R.T.: 3.914 min
 Delta R.T.: 0.000 min
 Response: 104243
 Conc: 303.96 ng/ml



#10 AR-1221-3
 R.T.: 4.841 min
 Delta R.T.: 0.000 min
 Response: 344170
 Conc: 392.92 ng/ml

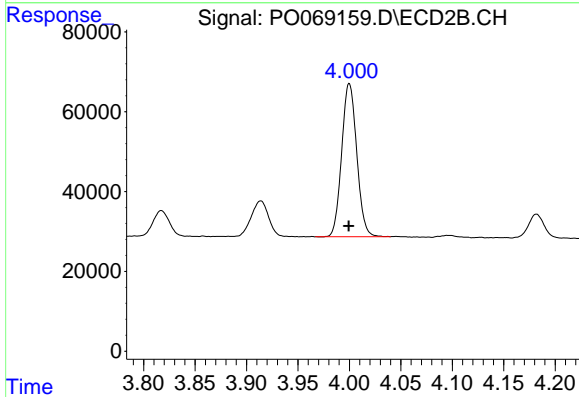


#10 AR-1221-3
 R.T.: 4.000 min
 Delta R.T.: 0.001 min
 Response: 391250
 Conc: 364.25 ng/ml

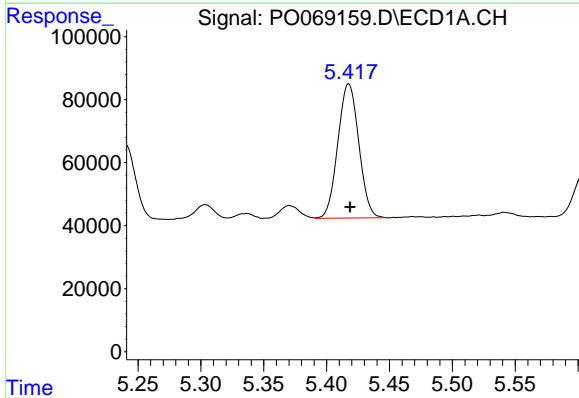


#11 AR-1232-1
 R.T.: 4.841 min
 Delta R.T.: -0.001 min
 Response: 344170
 Conc: 471.87 ng/ml

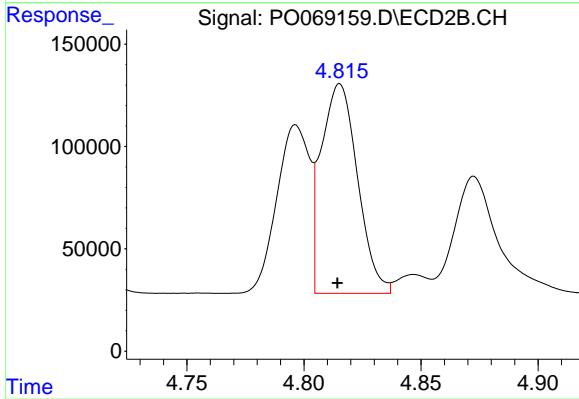
Instrument :
 ECD_O
 ClientSampled :
 AR1660CCC500



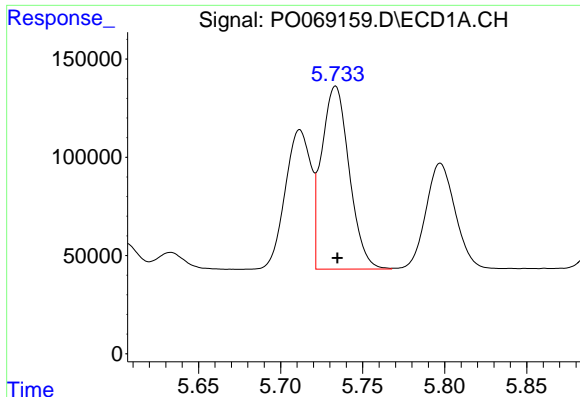
#11 AR-1232-1
 R.T.: 4.000 min
 Delta R.T.: 0.000 min
 Response: 391250
 Conc: 444.26 ng/ml



#12 AR-1232-2
 R.T.: 5.418 min
 Delta R.T.: -0.001 min
 Response: 494169
 Conc: 1193.80 ng/ml



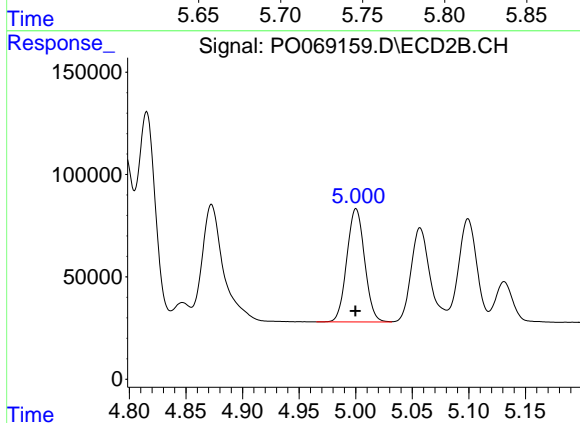
#12 AR-1232-2
 R.T.: 4.815 min
 Delta R.T.: 0.000 min
 Response: 1106162
 Conc: 1208.44 ng/ml



#13 AR-1232-3

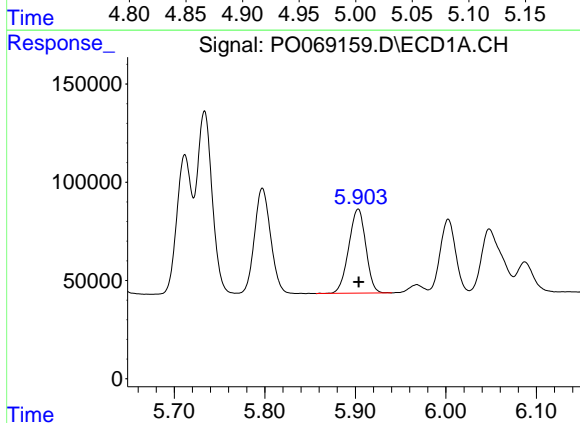
R.T.: 5.733 min
Delta R.T.: -0.001 min
Response: 1089894
Conc: 1325.56 ng/ml

Instrument :
ECD_O
ClientSampleId :
AR1660CCC500



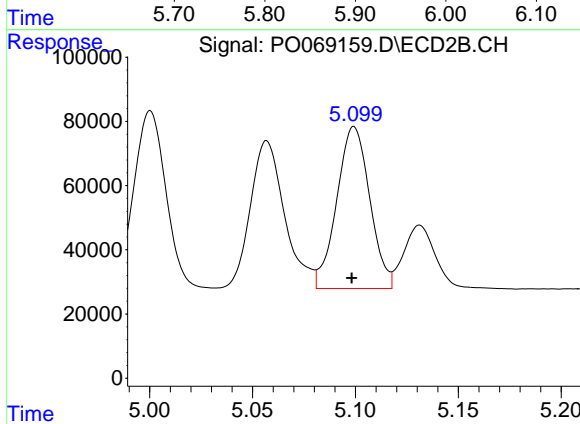
#13 AR-1232-3

R.T.: 5.000 min
Delta R.T.: 0.000 min
Response: 603465
Conc: 1230.74 ng/ml



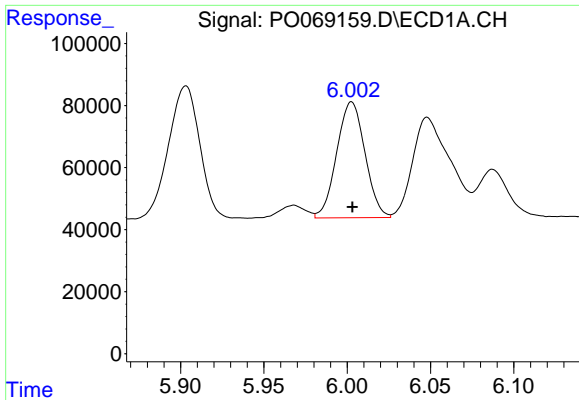
#14 AR-1232-4

R.T.: 5.903 min
Delta R.T.: 0.000 min
Response: 559711
Conc: 1350.55 ng/ml



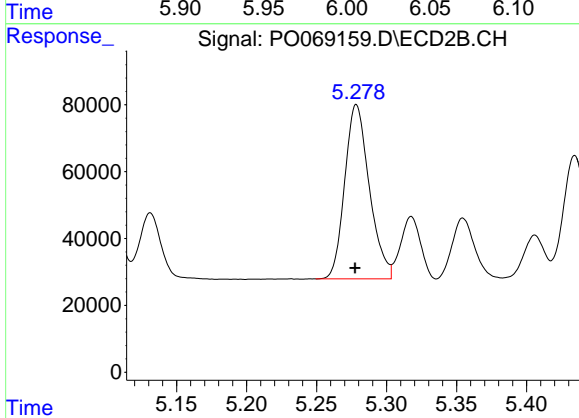
#14 AR-1232-4

R.T.: 5.099 min
Delta R.T.: 0.001 min
Response: 563787
Conc: 1332.89 ng/ml

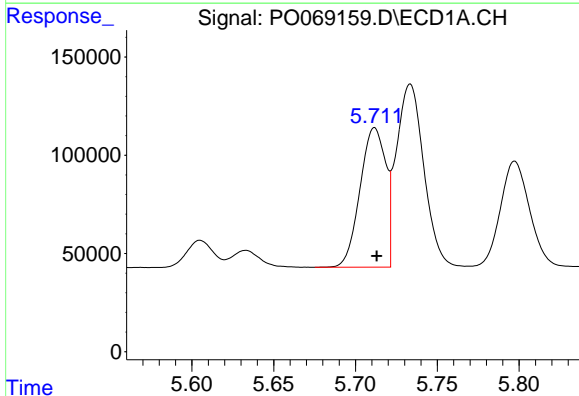


#15 AR-1232-5
 R.T.: 6.003 min
 Delta R.T.: 0.000 min
 Response: 441435
 Conc: 1556.23 ng/ml

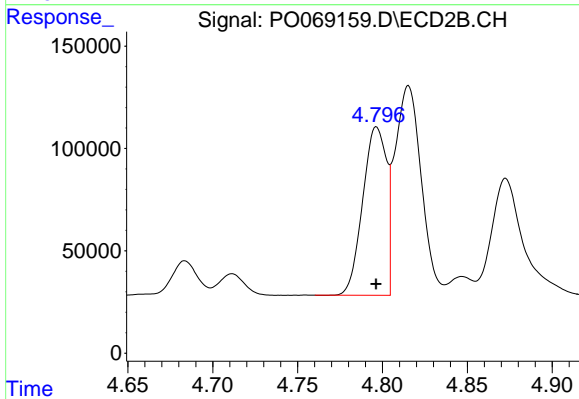
Instrument :
 ECD_O
 ClientSampleId :
 AR1660CCC500



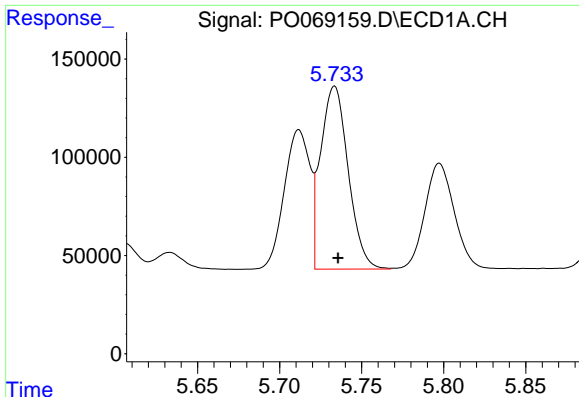
#15 AR-1232-5
 R.T.: 5.278 min
 Delta R.T.: 0.001 min
 Response: 637295
 Conc: 1302.95 ng/ml



#16 AR-1242-1
 R.T.: 5.712 min
 Delta R.T.: -0.001 min
 Response: 772769
 Conc: 776.88 ng/ml



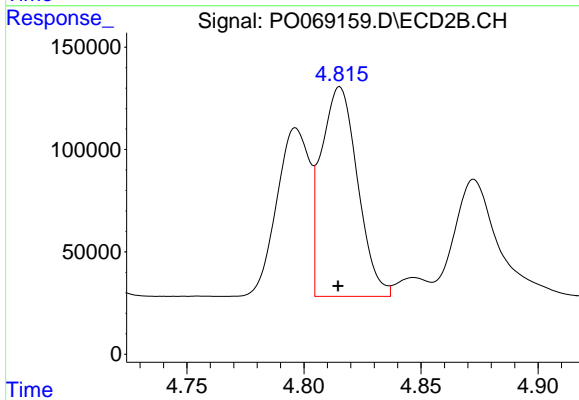
#16 AR-1242-1
 R.T.: 4.797 min
 Delta R.T.: 0.000 min
 Response: 800980
 Conc: 724.09 ng/ml



#17 AR-1242-2

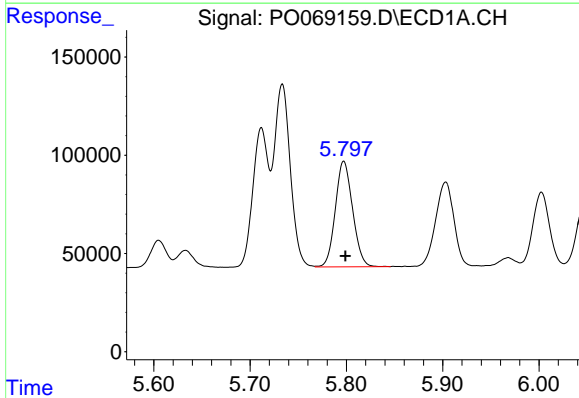
R.T.: 5.733 min
 Delta R.T.: -0.002 min
 Response: 1089894
 Conc: 785.83 ng/ml

Instrument :
 ECD_O
 ClientSampleId :
 AR1660CCC500



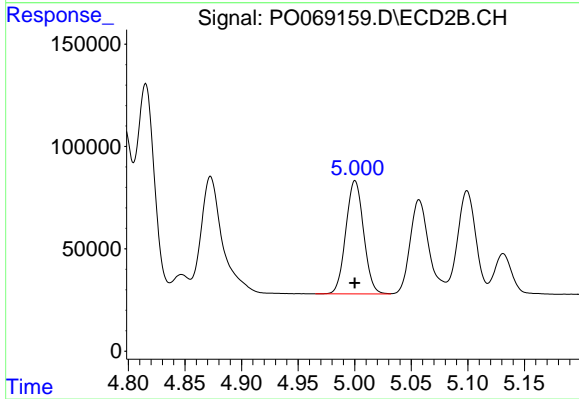
#17 AR-1242-2

R.T.: 4.815 min
 Delta R.T.: 0.000 min
 Response: 1106162
 Conc: 723.09 ng/ml



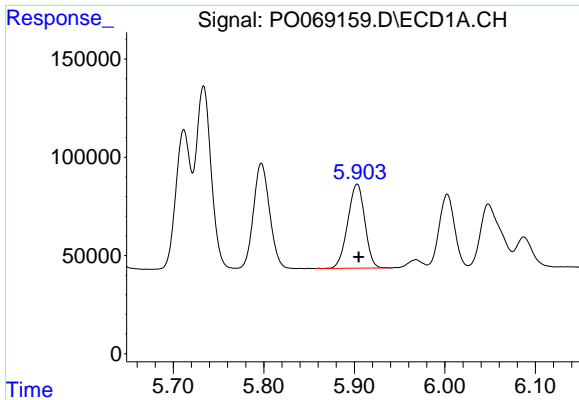
#18 AR-1242-3

R.T.: 5.797 min
 Delta R.T.: -0.002 min
 Response: 668330
 Conc: 774.83 ng/ml



#18 AR-1242-3

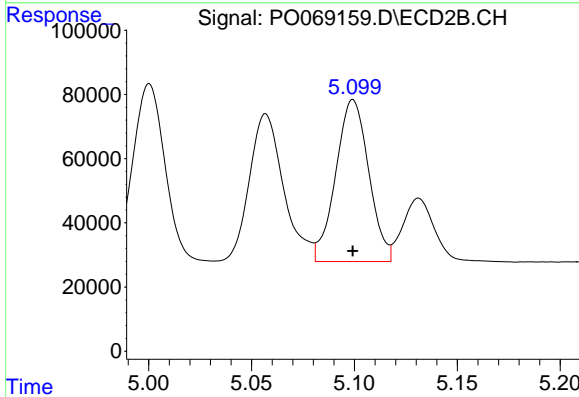
R.T.: 5.000 min
 Delta R.T.: 0.000 min
 Response: 603465
 Conc: 725.40 ng/ml



#19 AR-1242-4

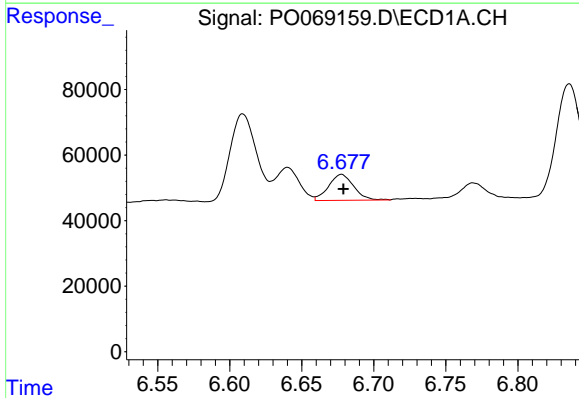
R.T.: 5.903 min
 Delta R.T.: -0.002 min
 Response: 559711
 Conc: 779.18 ng/ml

Instrument :
 ECD_O
ClientSampleId :
 AR1660CCC500



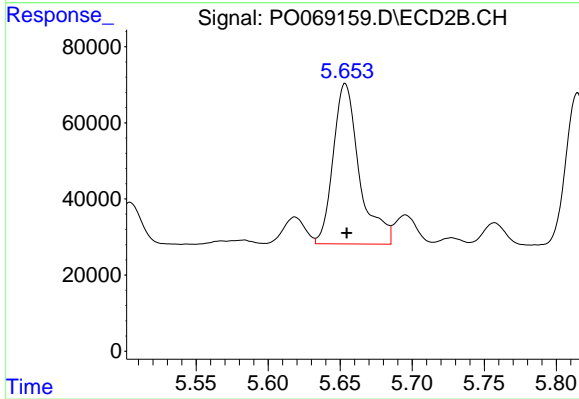
#19 AR-1242-4

R.T.: 5.099 min
 Delta R.T.: 0.000 min
 Response: 563787
 Conc: 709.72 ng/ml



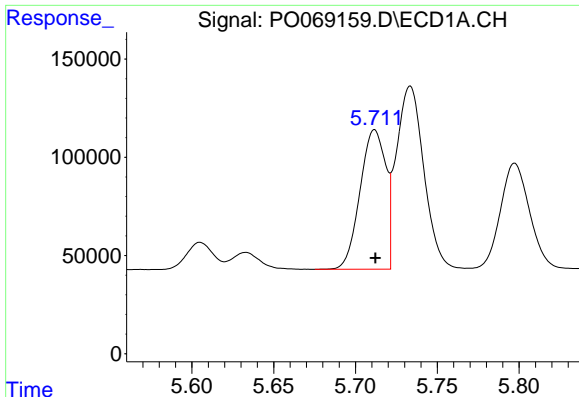
#20 AR-1242-5

R.T.: 6.678 min
 Delta R.T.: -0.001 min
 Response: 96068
 Conc: 107.66 ng/ml



#20 AR-1242-5

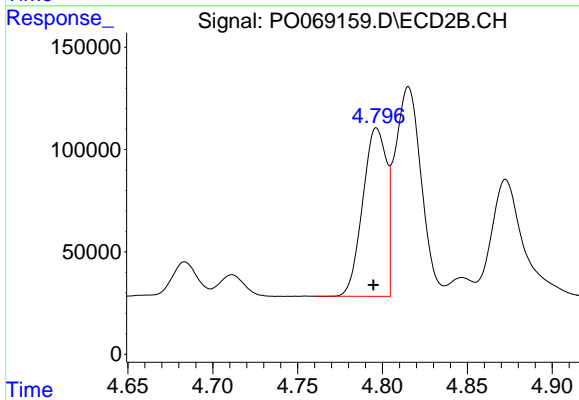
R.T.: 5.654 min
 Delta R.T.: 0.000 min
 Response: 532934
 Conc: 478.88 ng/ml



#21 AR-1248-1

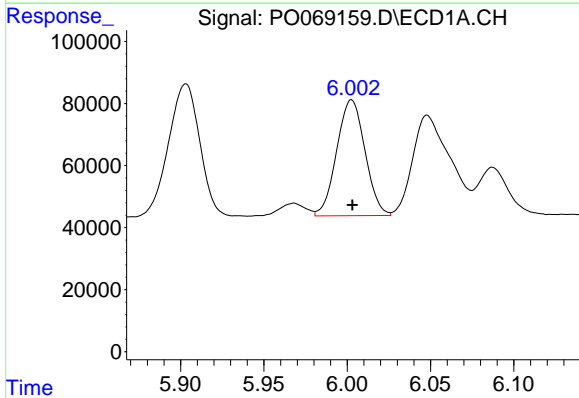
R.T.: 5.712 min
Delta R.T.: 0.000 min
Response: 772769
Conc: 991.25 ng/ml

Instrument :
ECD_O
ClientSampleId :
AR1660CCC500



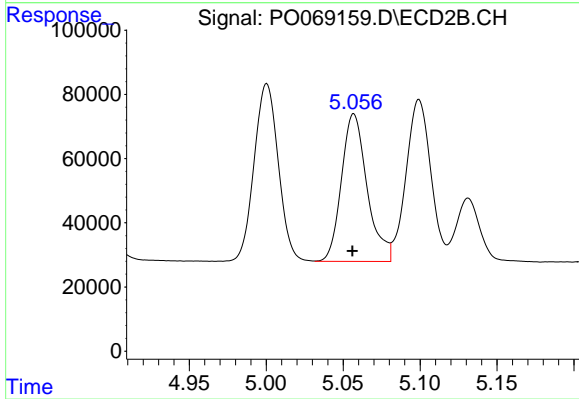
#21 AR-1248-1

R.T.: 4.797 min
Delta R.T.: 0.002 min
Response: 800980
Conc: 926.08 ng/ml



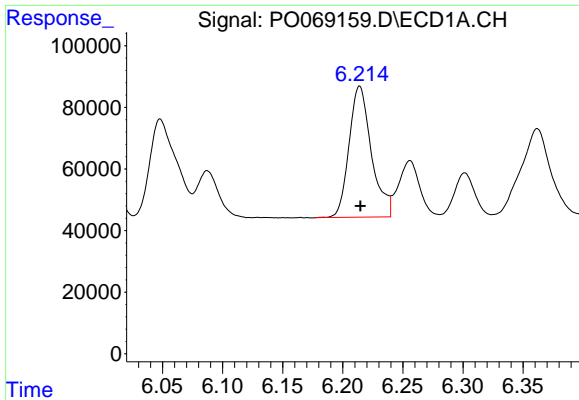
#22 AR-1248-2

R.T.: 6.003 min
Delta R.T.: 0.000 min
Response: 441435
Conc: 431.70 ng/ml



#22 AR-1248-2

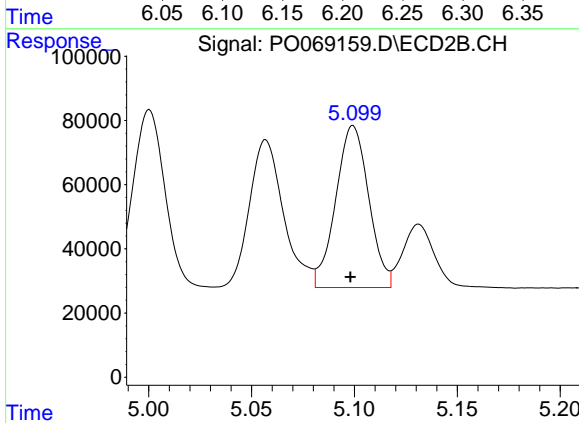
R.T.: 5.057 min
Delta R.T.: 0.000 min
Response: 532325
Conc: 441.27 ng/ml



#23 AR-1248-3

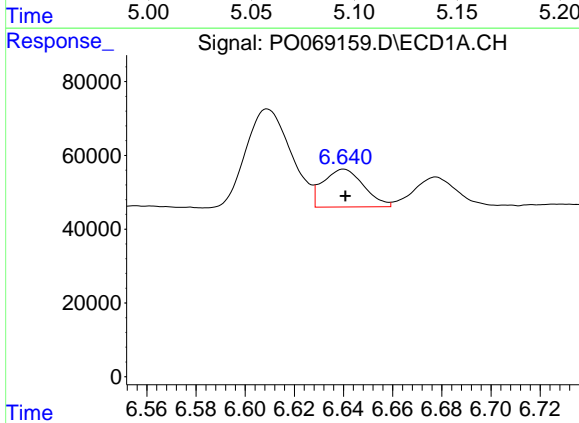
R.T.: 6.214 min
 Delta R.T.: 0.000 min
 Response: 549781
 Conc: 444.40 ng/ml

Instrument :
 ECD_O
 ClientSampleId :
 AR1660CCC500



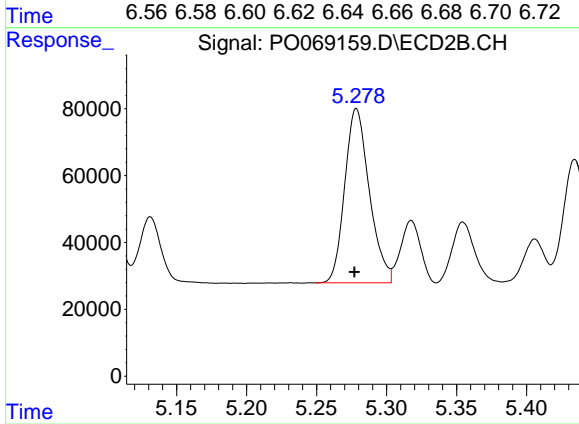
#23 AR-1248-3

R.T.: 5.099 min
 Delta R.T.: 0.001 min
 Response: 563787
 Conc: 498.29 ng/ml



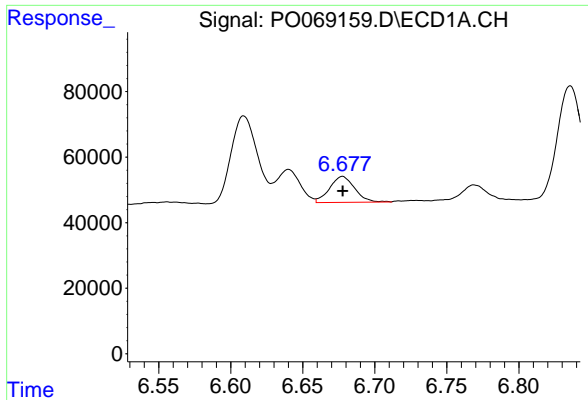
#24 AR-1248-4

R.T.: 6.640 min
 Delta R.T.: 0.000 min
 Response: 117466
 Conc: 78.10 ng/ml



#24 AR-1248-4

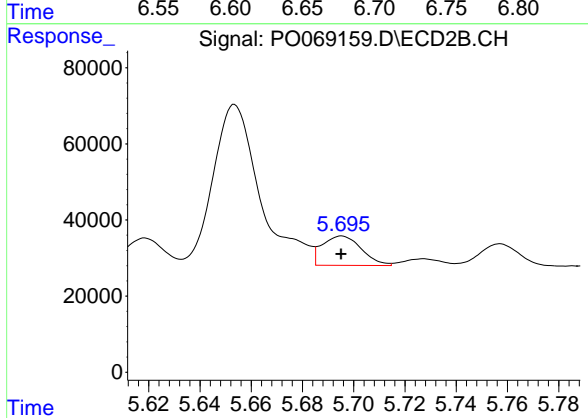
R.T.: 5.278 min
 Delta R.T.: 0.002 min
 Response: 637295
 Conc: 440.72 ng/ml



#25 AR-1248-5

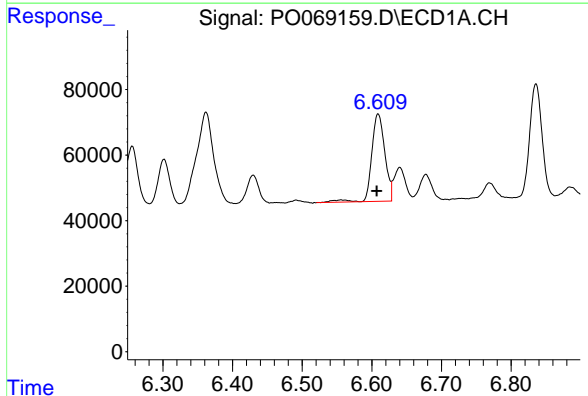
R.T.: 6.678 min
 Delta R.T.: 0.000 min
 Response: 96068
 Conc: 66.34 ng/ml

Instrument :
 ECD_O
ClientSampled :
 AR1660CCC500



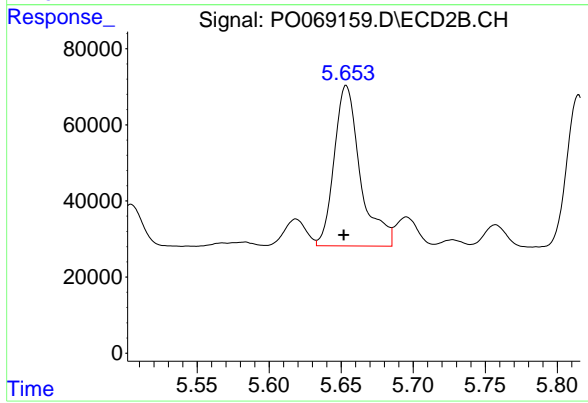
#25 AR-1248-5

R.T.: 5.695 min
 Delta R.T.: 0.000 min
 Response: 81836
 Conc: 56.57 ng/ml



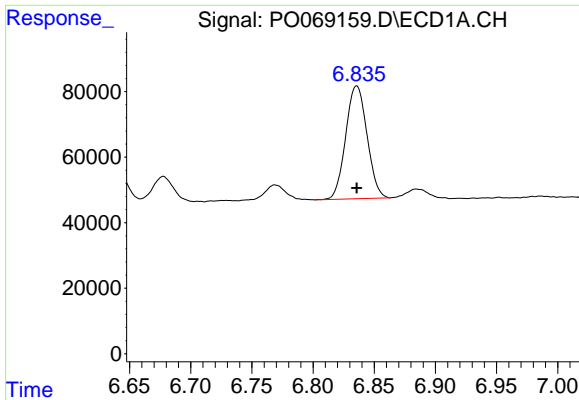
#26 AR-1254-1

R.T.: 6.609 min
 Delta R.T.: 0.002 min
 Response: 351531
 Conc: 232.04 ng/ml



#26 AR-1254-1

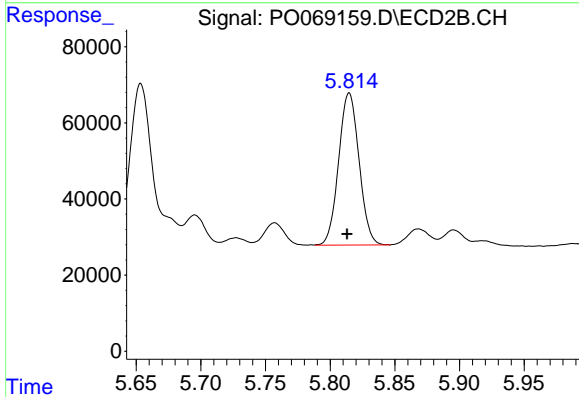
R.T.: 5.654 min
 Delta R.T.: 0.002 min
 Response: 532934
 Conc: 226.67 ng/ml



#27 AR-1254-2

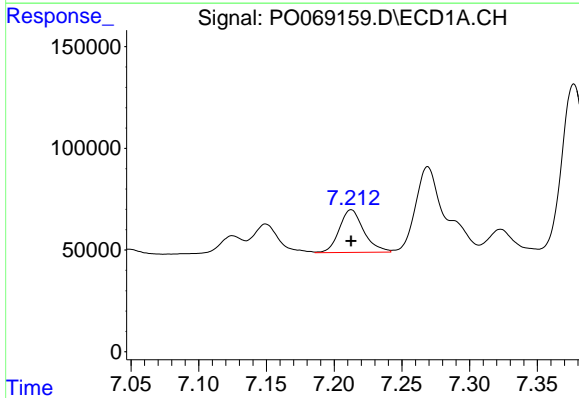
R.T.: 6.836 min
 Delta R.T.: 0.000 min
 Response: 418176
 Conc: 174.35 ng/ml

Instrument :
 ECD_O
 ClientSampleId :
 AR1660CCC500



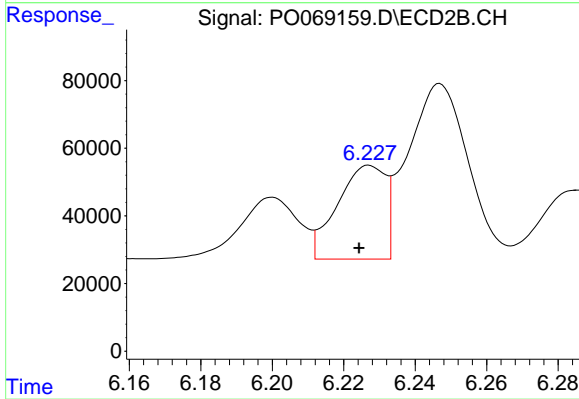
#27 AR-1254-2

R.T.: 5.815 min
 Delta R.T.: 0.002 min
 Response: 439075
 Conc: 208.19 ng/ml



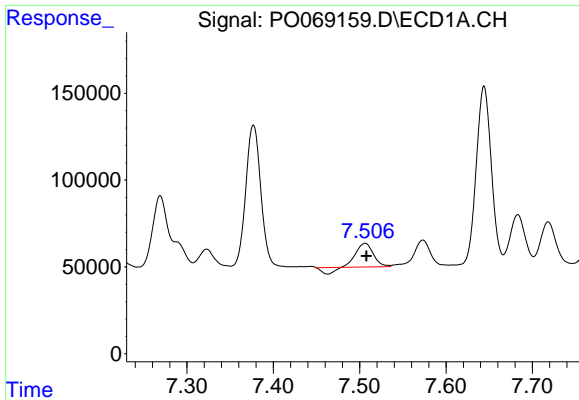
#28 AR-1254-3

R.T.: 7.213 min
 Delta R.T.: 0.000 min
 Response: 264245
 Conc: 99.53 ng/ml



#28 AR-1254-3

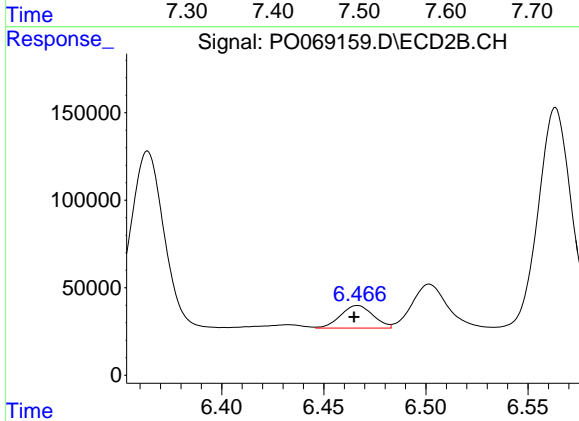
R.T.: 6.227 min
 Delta R.T.: 0.003 min
 Response: 259309
 Conc: 75.20 ng/ml



#29 AR-1254-4

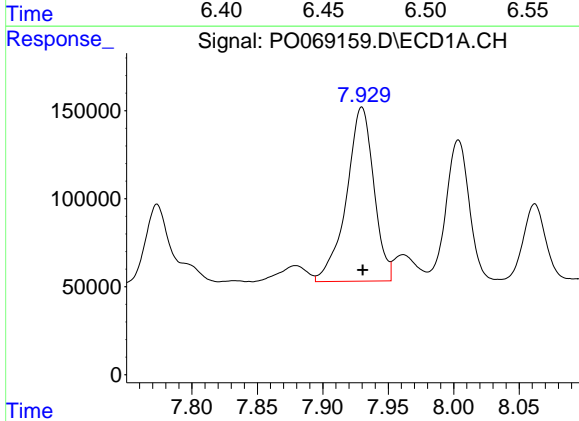
R.T.: 7.507 min
 Delta R.T.: -0.001 min
 Response: 162628
 Conc: 76.26 ng/ml

Instrument :
 ECD_O
ClientSampled :
 AR1660CCC500



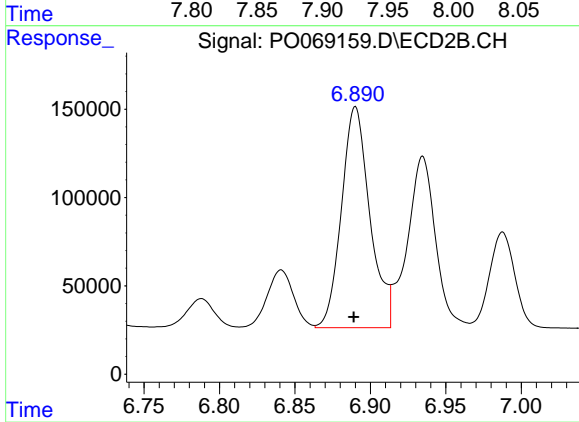
#29 AR-1254-4

R.T.: 6.467 min
 Delta R.T.: 0.002 min
 Response: 142767
 Conc: 61.22 ng/ml



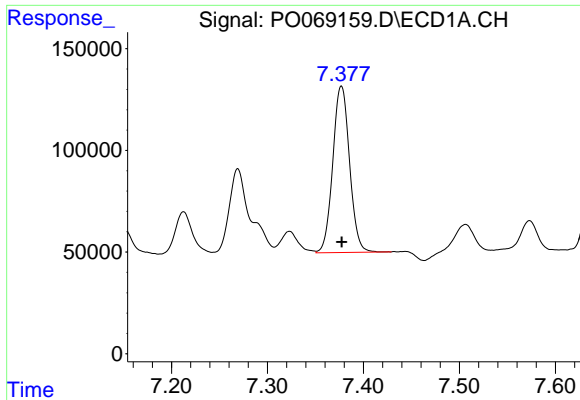
#30 AR-1254-5

R.T.: 7.930 min
 Delta R.T.: 0.000 min
 Response: 1440835
 Conc: 642.80 ng/ml



#30 AR-1254-5

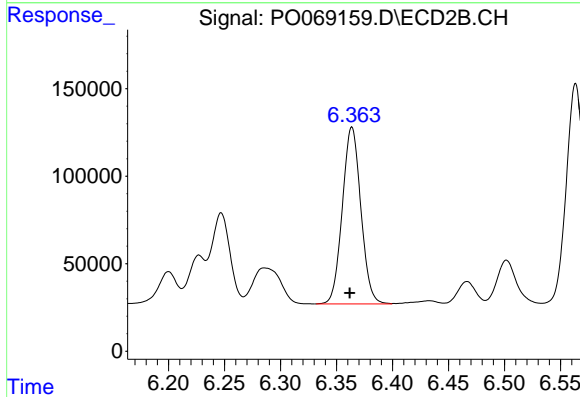
R.T.: 6.890 min
 Delta R.T.: 0.001 min
 Response: 1640099
 Conc: 506.57 ng/ml



#31 AR-1260-1

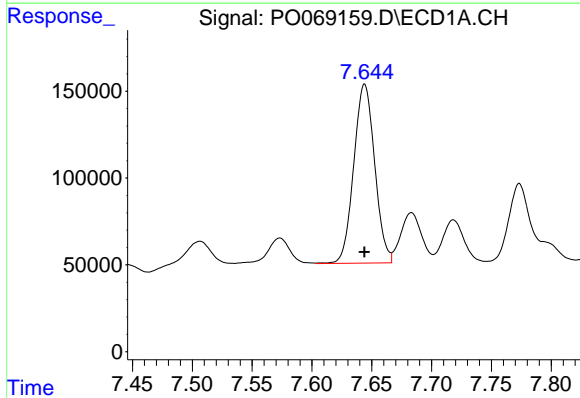
R.T.: 7.377 min
 Delta R.T.: 0.000 min
 Response: 995029
 Conc: 521.39 ng/ml

Instrument :
 ECD_O
 ClientSampleId :
 AR1660CCC500



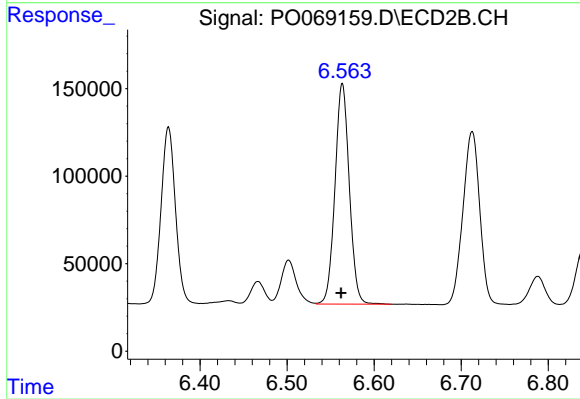
#31 AR-1260-1

R.T.: 6.364 min
 Delta R.T.: 0.002 min
 Response: 1162154
 Conc: 496.66 ng/ml



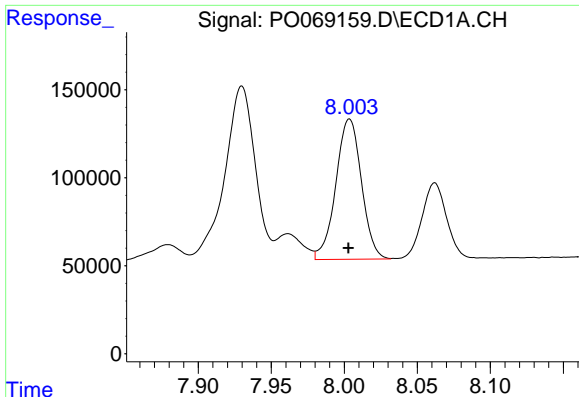
#32 AR-1260-2

R.T.: 7.644 min
 Delta R.T.: 0.000 min
 Response: 1255024
 Conc: 536.22 ng/ml



#32 AR-1260-2

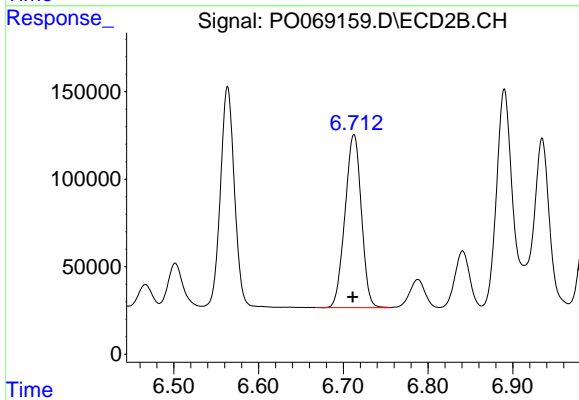
R.T.: 6.564 min
 Delta R.T.: 0.002 min
 Response: 1442765
 Conc: 506.85 ng/ml



#33 AR-1260-3

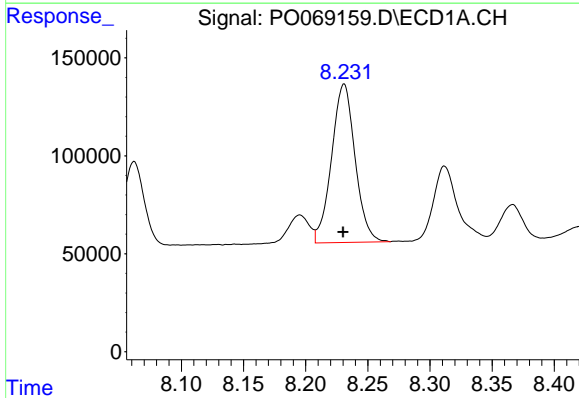
R.T.: 8.004 min
 Delta R.T.: 0.000 min
 Response: 974896
 Conc: 548.75 ng/ml

Instrument :
 ECD_O
 ClientSampleId :
 AR1660CCC500



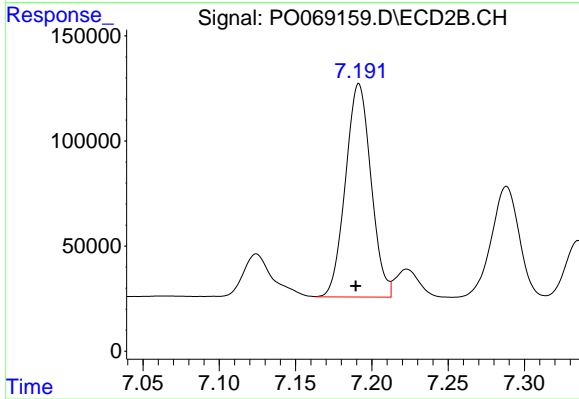
#33 AR-1260-3

R.T.: 6.713 min
 Delta R.T.: 0.001 min
 Response: 1325053
 Conc: 492.66 ng/ml



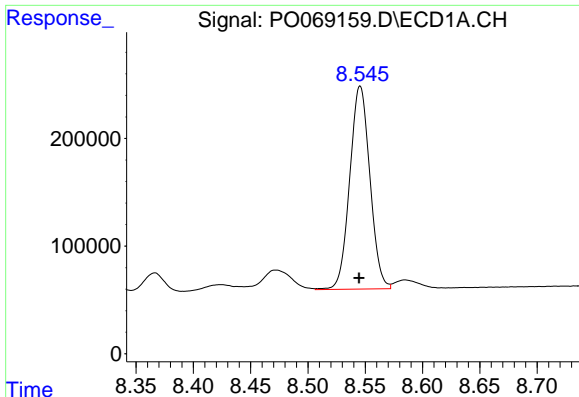
#34 AR-1260-4

R.T.: 8.231 min
 Delta R.T.: 0.000 min
 Response: 1066735
 Conc: 511.51 ng/ml



#34 AR-1260-4

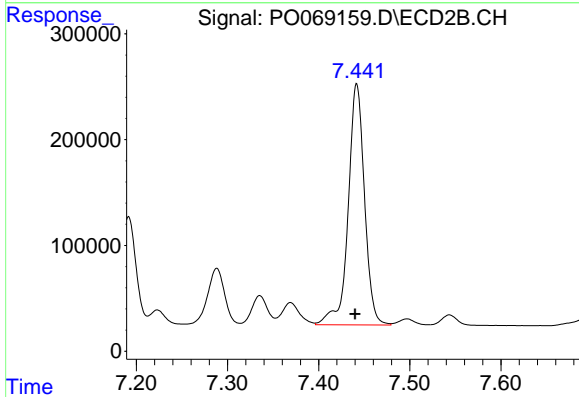
R.T.: 7.192 min
 Delta R.T.: 0.002 min
 Response: 1181332
 Conc: 493.07 ng/ml



#35 AR-1260-5

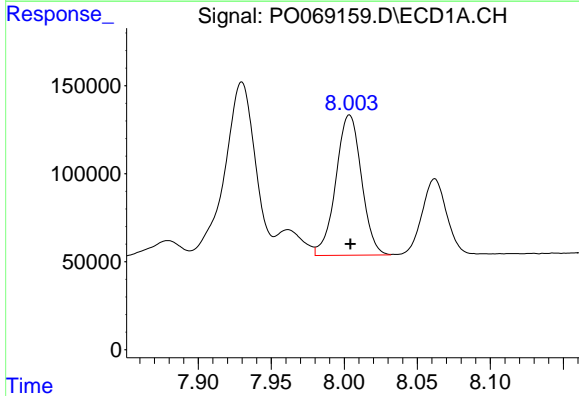
R.T.: 8.546 min
 Delta R.T.: 0.000 min
 Response: 2310417
 Conc: 525.64 ng/ml

Instrument :
 ECD_O
 ClientSampleId :
 AR1660CCC500



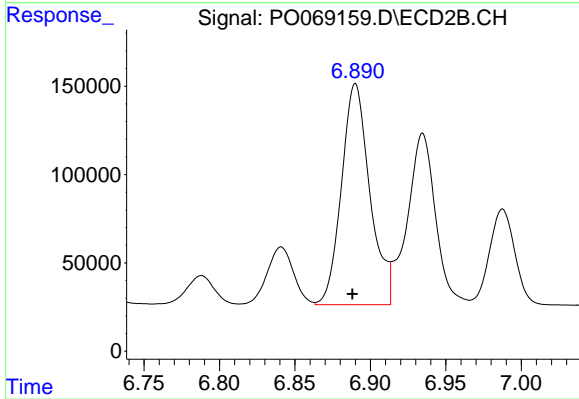
#35 AR-1260-5

R.T.: 7.442 min
 Delta R.T.: 0.002 min
 Response: 2839694
 Conc: 490.16 ng/ml



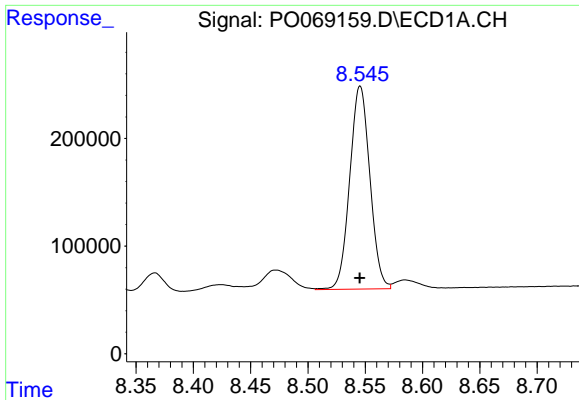
#36 AR-1262-1

R.T.: 8.004 min
 Delta R.T.: 0.000 min
 Response: 974896
 Conc: 384.43 ng/ml



#36 AR-1262-1

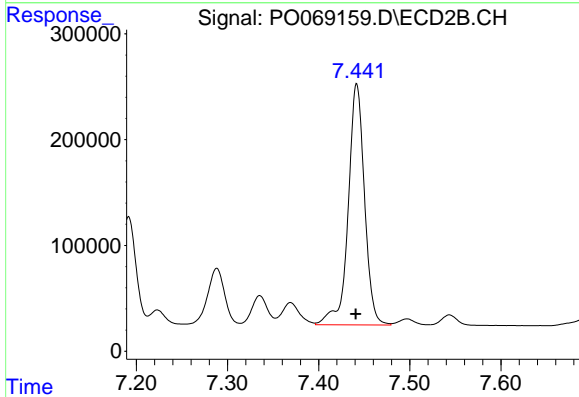
R.T.: 6.890 min
 Delta R.T.: 0.002 min
 Response: 1640099
 Conc: 936.08 ng/ml



#37 AR-1262-2

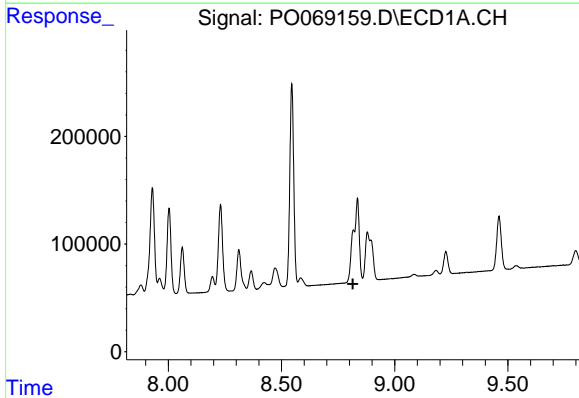
R.T.: 8.546 min
 Delta R.T.: 0.000 min
 Response: 2310417
 Conc: 481.08 ng/ml

Instrument :
 ECD_O
 ClientSampleId :
 AR1660CCC500



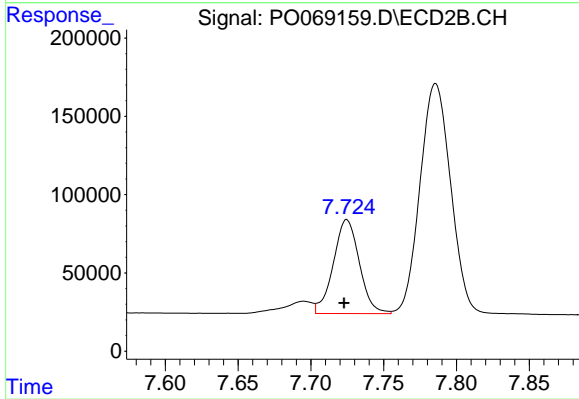
#37 AR-1262-2

R.T.: 7.442 min
 Delta R.T.: 0.001 min
 Response: 2839694
 Conc: 469.59 ng/ml



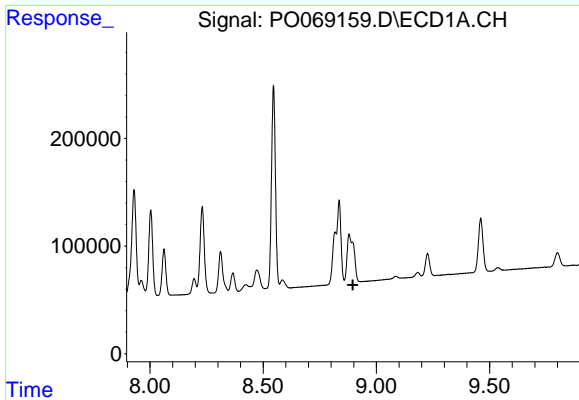
#38 AR-1262-3

R.T.: 8.818 min
 Delta R.T.: 0.002 min
 Response: -922460
 Conc: N.D.



#38 AR-1262-3

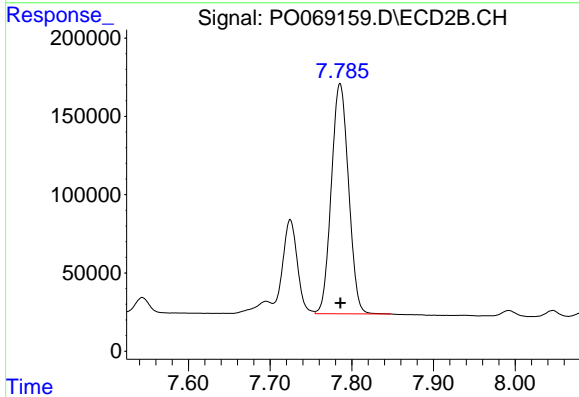
R.T.: 7.725 min
 Delta R.T.: 0.002 min
 Response: 748028
 Conc: 301.37 ng/ml



#39 AR-1262-4

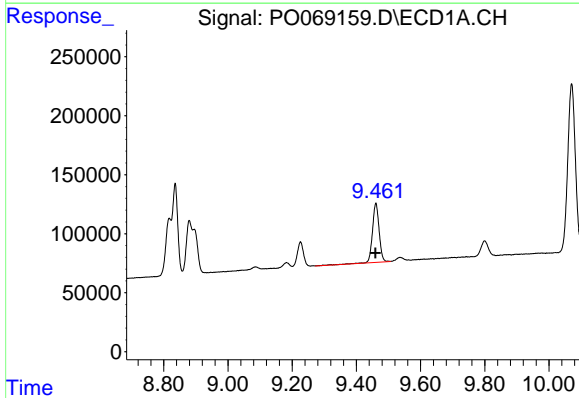
R.T.: 8.880 min
 Delta R.T.: -0.016 min
 Response: -490634
 Conc: N.D.

Instrument :
 ECD_O
 ClientSampleId :
 AR1660CCC500



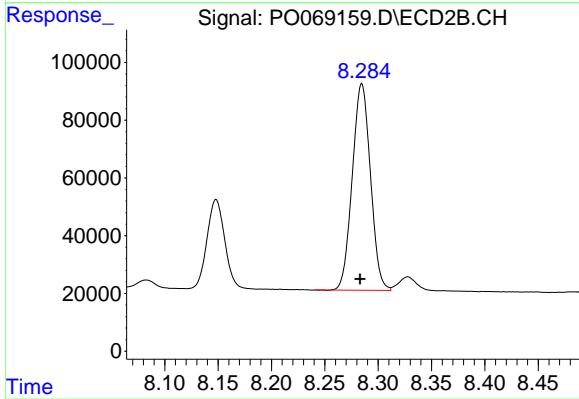
#39 AR-1262-4

R.T.: 7.786 min
 Delta R.T.: 0.000 min
 Response: 2153493
 Conc: 464.59 ng/ml



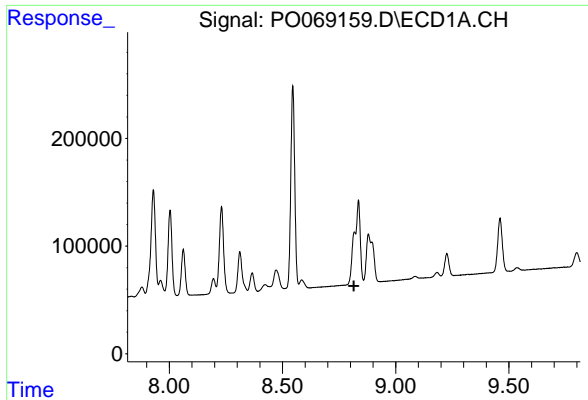
#40 AR-1262-5

R.T.: 9.461 min
 Delta R.T.: 0.001 min
 Response: 720086
 Conc: 401.33 ng/ml



#40 AR-1262-5

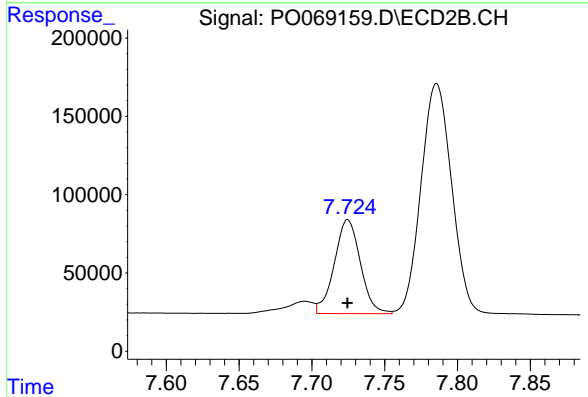
R.T.: 8.285 min
 Delta R.T.: 0.002 min
 Response: 848948
 Conc: 365.38 ng/ml



#41 AR-1268-1

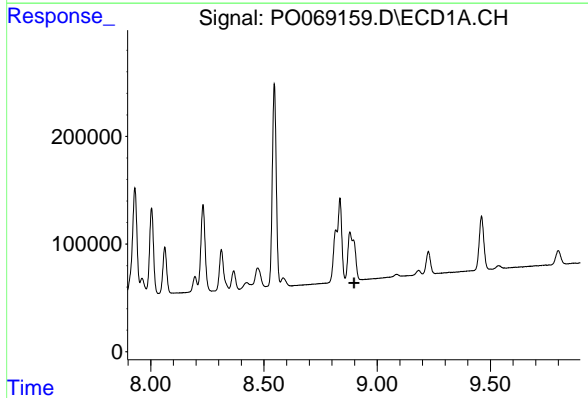
R.T.: 8.818 min
 Delta R.T.: 0.002 min
 Response: -922460
 Conc: N.D.

Instrument :
 ECD_O
 ClientSampleId :
 AR1660CCC500



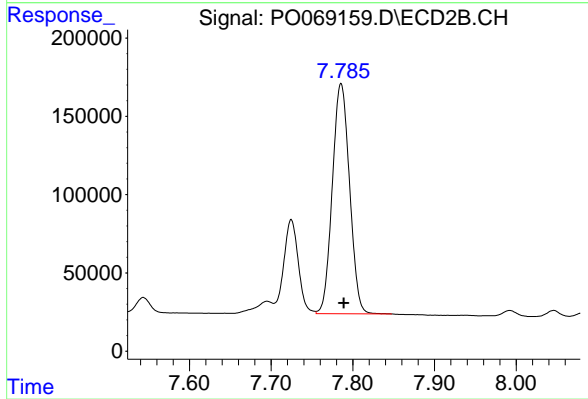
#41 AR-1268-1

R.T.: 7.725 min
 Delta R.T.: 0.000 min
 Response: 748028
 Conc: 102.63 ng/ml



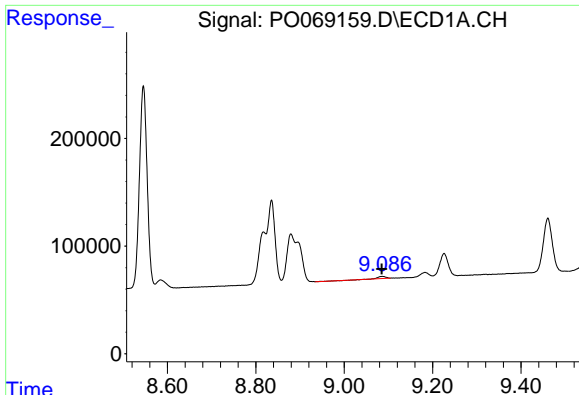
#42 AR-1268-2

R.T.: 8.880 min
 Delta R.T.: -0.018 min
 Response: -490634
 Conc: N.D.



#42 AR-1268-2

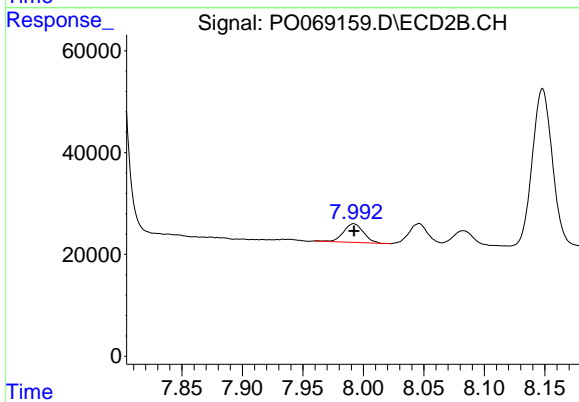
R.T.: 7.786 min
 Delta R.T.: -0.003 min
 Response: 2153493
 Conc: 322.02 ng/ml



#43 AR-1268-3

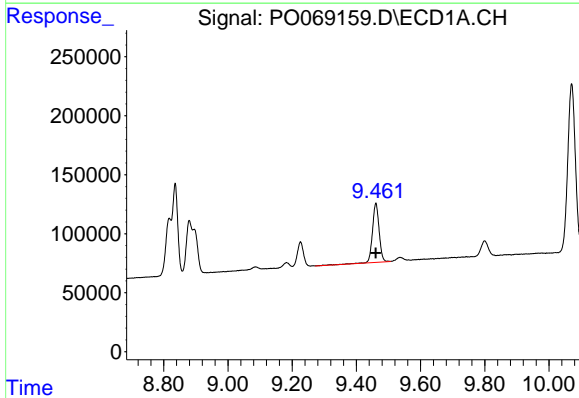
R.T.: 9.087 min
 Delta R.T.: 0.002 min
 Response: 21034
 Conc: 4.49 ng/ml

Instrument :
 ECD_O
 ClientSampled :
 AR1660CCC500



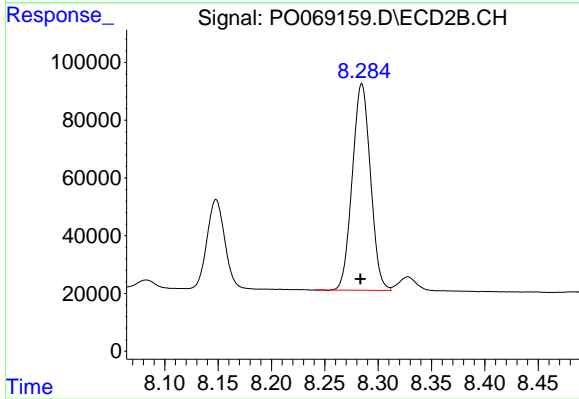
#43 AR-1268-3

R.T.: 7.992 min
 Delta R.T.: 0.000 min
 Response: 41852
 Conc: 7.54 ng/ml



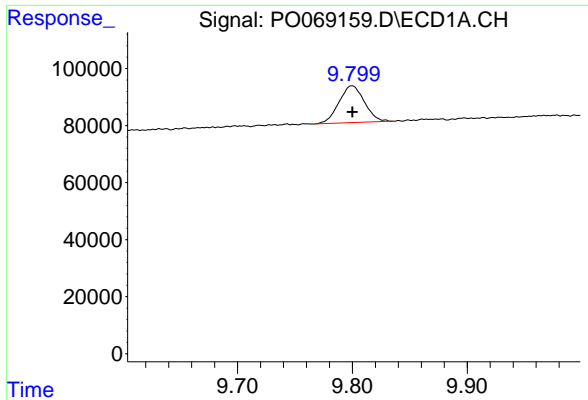
#44 AR-1268-4

R.T.: 9.461 min
 Delta R.T.: 0.000 min
 Response: 720086
 Conc: 343.64 ng/ml



#44 AR-1268-4

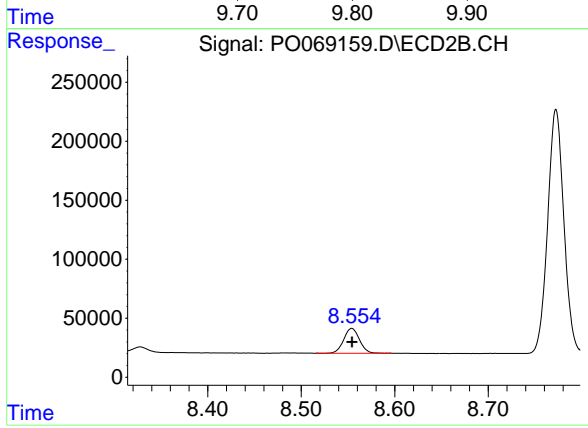
R.T.: 8.285 min
 Delta R.T.: 0.001 min
 Response: 848948
 Conc: 315.27 ng/ml



#45 AR-1268-5

R.T.: 9.800 min
Delta R.T.: 0.000 min
Response: 199232
Conc: 11.77 ng/ml

Instrument :
ECD_O
ClientSampleId :
AR1660CCC500



#45 AR-1268-5

R.T.: 8.554 min
Delta R.T.: 0.000 min
Response: 245288
Conc: 13.45 ng/ml