

Data Path : Z:\pestpcbsrv\HPCHEM1\ECD O\Data\PO062518\
 Data File : PO046197.D
 Signal(s) : Signal #1: ECD1A.CH Signal #2: ECD2B.CH
 Acq On : 25 Jun 2018 12:26
 Operator : SM/UA
 Sample : AR1268ICC500
 Misc :
 ALS Vial : 14 Sample Multiplier: 1

Instrument :
 ECD_O
 ClientSampleId :
 AR1268ICC500

Integration File signal 1: autoint1.e
 Integration File signal 2: autoint2.e
 Quant Time: Jun 25 12:47:34 2018
 Quant Method : Z:\pestpcbsrv\HPCHEM1\ECD_O\methods\PO062518.M
 Quant Title : GC EXTRACTABLES
 QLast Update : Mon Jun 25 12:44:17 2018
 Response via : Initial Calibration
 Integrator: ChemStation 6890 Scale Mode: Small noise peaks clipped

Volume Inj. : 2 ul
 Signal #1 Phase : ZB-MR1 Signal #2 Phase: ZB-MR2
 Signal #1 Info : 30Mx0.32mmx 0.50µ Signal #2 Info : 30M x 0.32mm x 0.25µm

Compound	RT#1	RT#2	Resp#1	Resp#2	ng/ml	ng/ml

System Monitoring Compounds						
1) SA Tetrachlo...	4.379	3.605	27999764	11979638	48.637	48.799
2) SA Decachlor...	10.048	8.576	36311213	13010780	80.190	79.117
Target Compounds						
41) L9 AR-1268-1	8.591	7.492	31070596	12216084	500.000	500.000
42) L9 AR-1268-2	8.682	7.555	28915350	12111803	500.000	500.000
43) L9 AR-1268-3	8.906	7.762	23841500	9400064	500.000	500.000
44) L9 AR-1268-4	9.315	8.045	9723895	4183085	500.000	500.000
45) L9 AR-1268-5	9.719	8.329	74600520	24997184	500.000	500.000

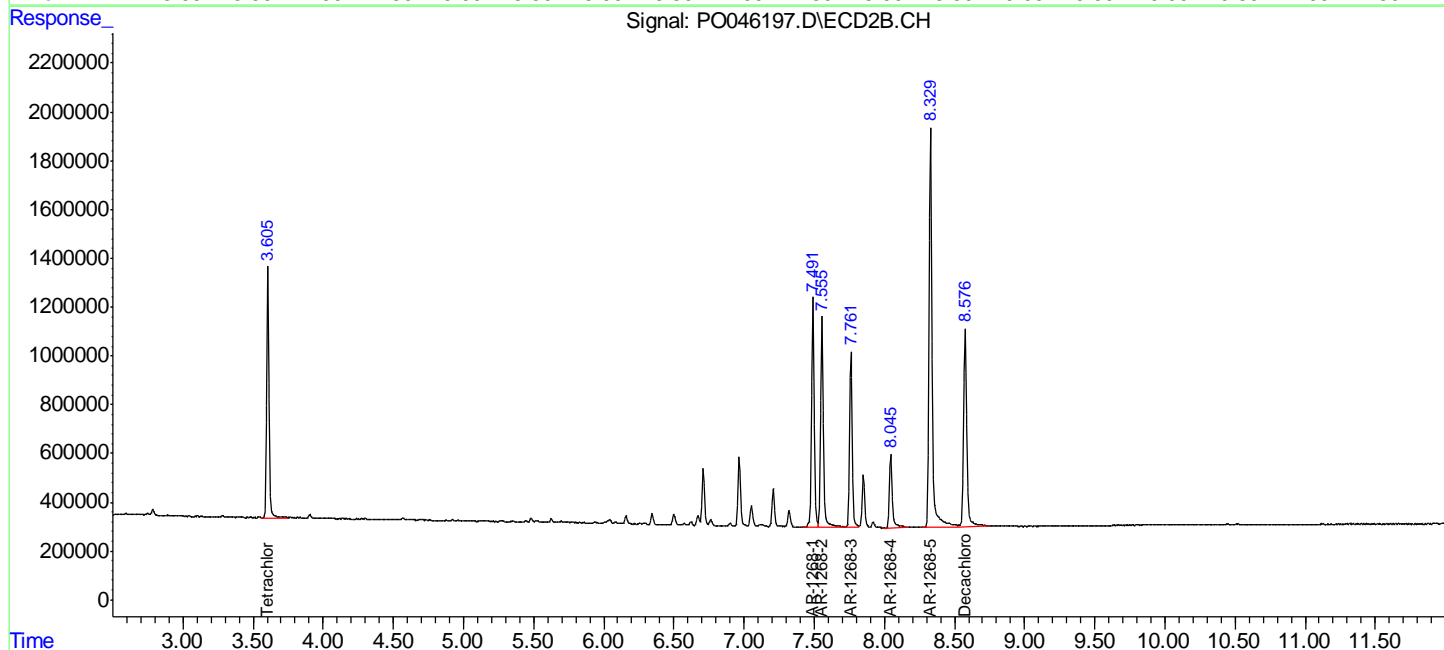
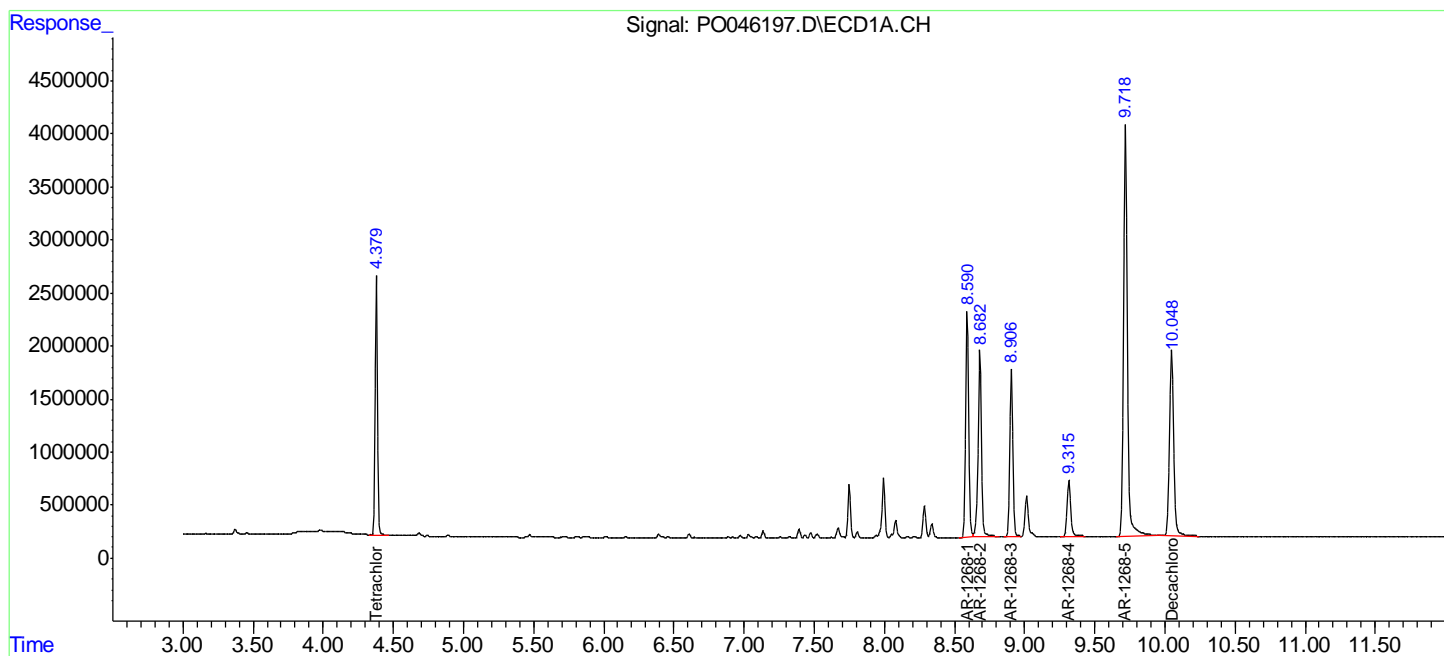
(f)=RT Delta > 1/2 Window (#)=Amounts differ by > 25% (m)=manual int.

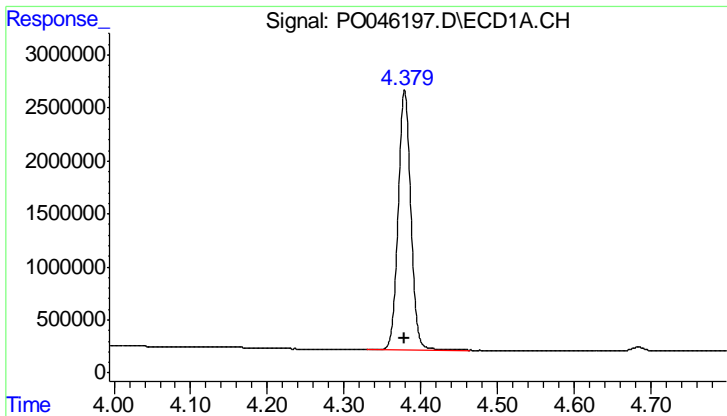
Data Path : Z:\pestpcbsrv\HPCHEM1\ECD O\Data\PO062518\
 Data File : PO046197.D
 Signal(s) : Signal #1: ECD1A.CH Signal #2: ECD2B.CH
 Acq On : 25 Jun 2018 12:26
 Operator : SM/UA
 Sample : AR1268ICC500
 Misc :
 ALS Vial : 14 Sample Multiplier: 1

Instrument :
 ECD_O
 ClientSampled :
 AR1268ICC500

Integration File signal 1: autoint1.e
 Integration File signal 2: autoint2.e
 Quant Time: Jun 25 12:47:34 2018
 Quant Method : Z:\pestpcbsrv\HPCHEM1\ECD_O\methods\PO062518.M
 Quant Title : GC EXTRACTABLES
 QLast Update : Mon Jun 25 12:44:17 2018
 Response via : Initial Calibration
 Integrator: ChemStation 6890 Scale Mode: Small noise peaks clipped

Volume Inj. : 2 ul
 Signal #1 Phase : ZB-MR1 Signal #2 Phase: ZB-MR2
 Signal #1 Info : 30Mx0.32mmx 0.50µ Signal #2 Info : 30M x 0.32mm x 0.25µm

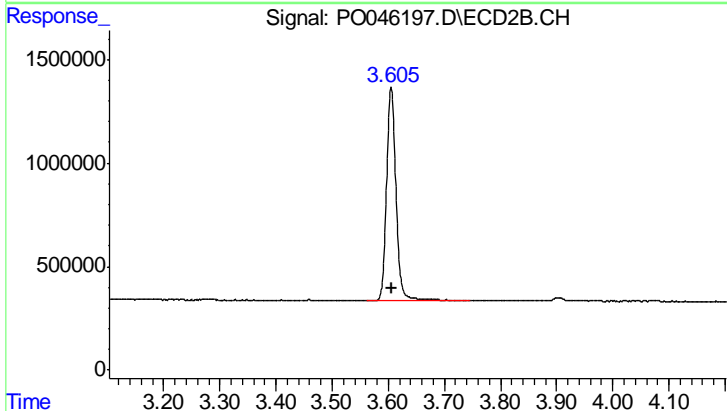




#1 Tetrachloro-m-xylene

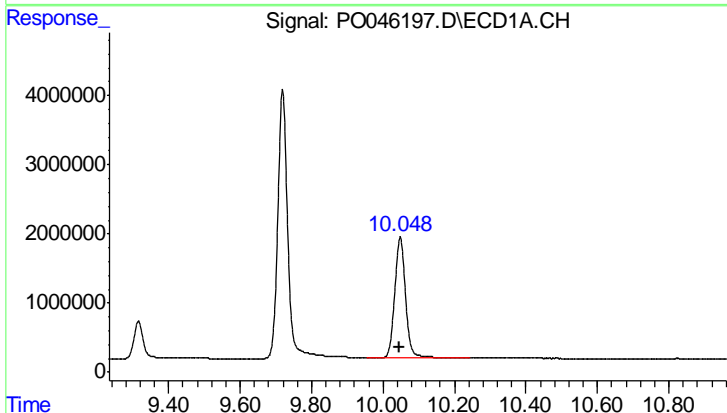
R.T.: 4.379 min
 Delta R.T.: 0.000 min
 Response: 27999764
 Conc: 48.64 ng/ml

Instrument :
 ECD_O
 ClientSampleId :
 AR1268ICC500



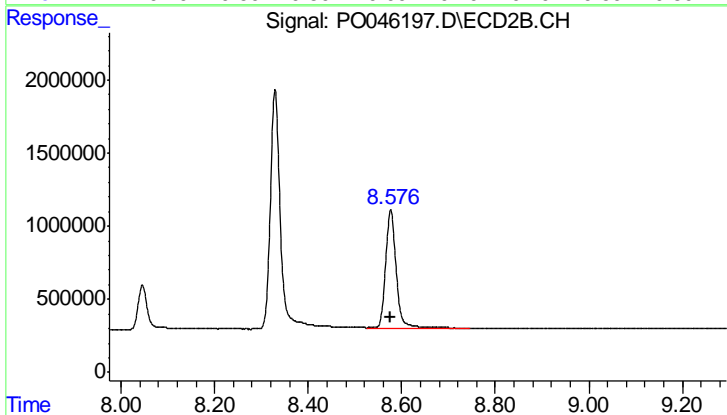
#1 Tetrachloro-m-xylene

R.T.: 3.605 min
 Delta R.T.: 0.000 min
 Response: 11979638
 Conc: 48.80 ng/ml



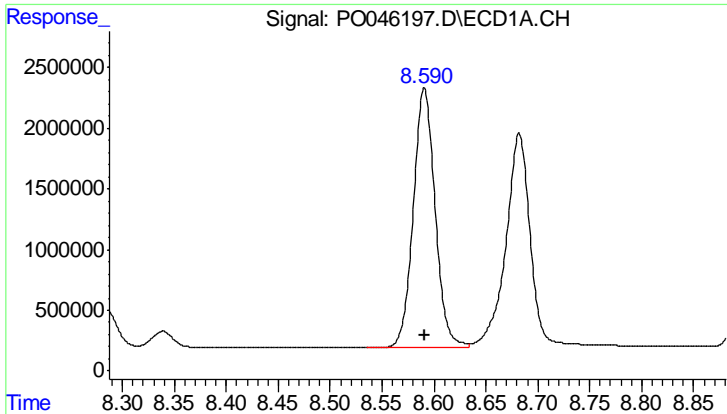
#2 Decachlorobiphenyl

R.T.: 10.048 min
 Delta R.T.: 0.002 min
 Response: 36311213
 Conc: 80.19 ng/ml



#2 Decachlorobiphenyl

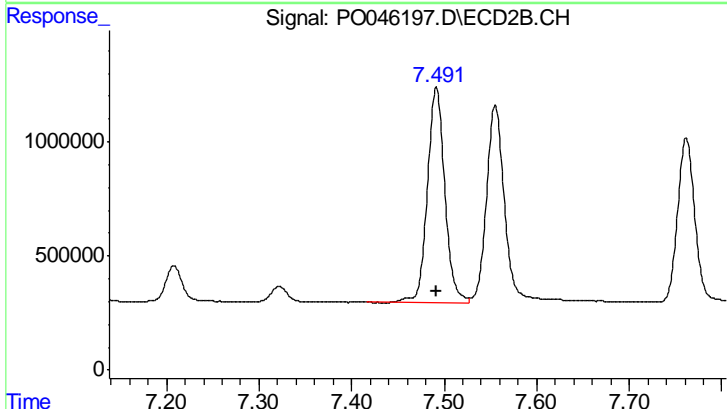
R.T.: 8.576 min
 Delta R.T.: 0.000 min
 Response: 13010780
 Conc: 79.12 ng/ml



#41 AR-1268-1

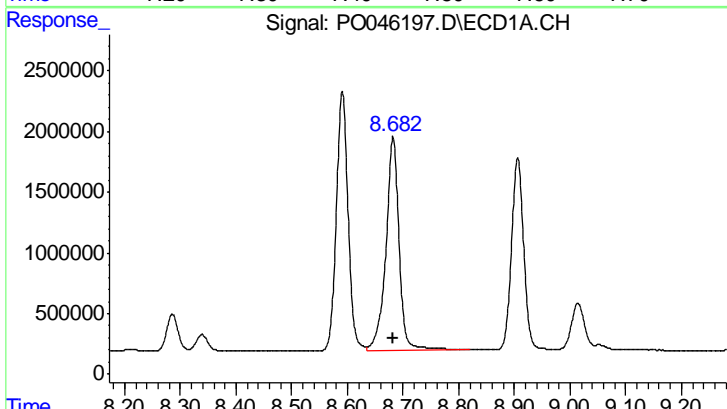
R.T.: 8.591 min
 Delta R.T.: 0.000 min
 Response: 31070596
 Conc: 500.00 ng/ml

Instrument :
 ECD_O
 ClientSampled :
 AR1268ICC500



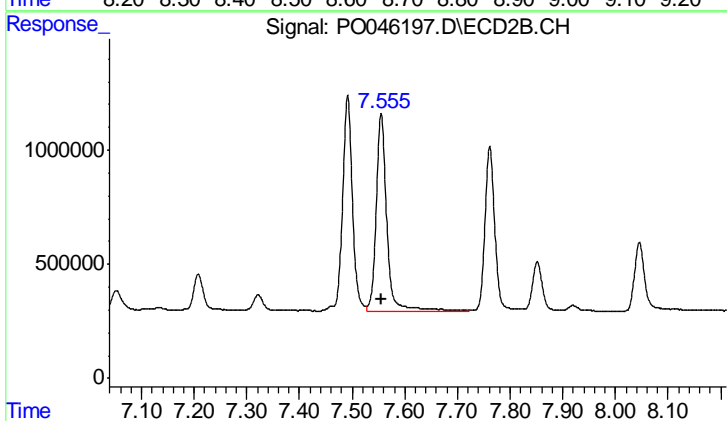
#41 AR-1268-1

R.T.: 7.492 min
 Delta R.T.: 0.000 min
 Response: 12216084
 Conc: 500.00 ng/ml



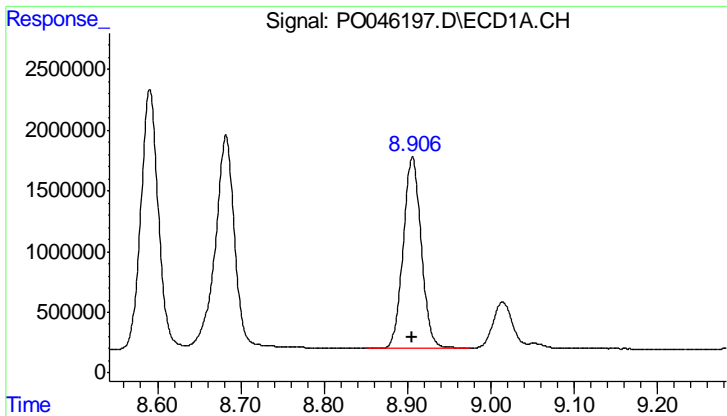
#42 AR-1268-2

R.T.: 8.682 min
 Delta R.T.: 0.000 min
 Response: 28915350
 Conc: 500.00 ng/ml



#42 AR-1268-2

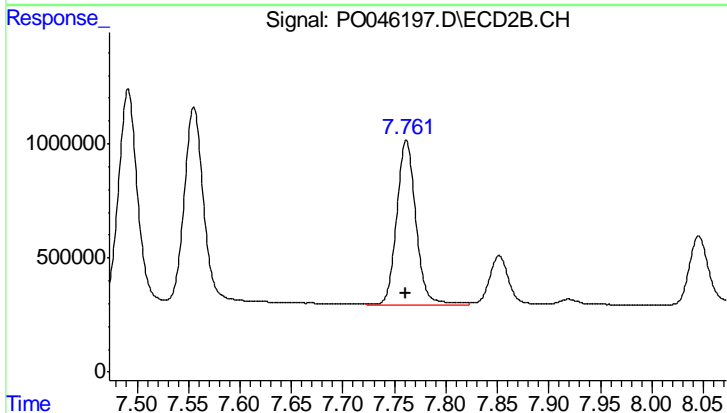
R.T.: 7.555 min
 Delta R.T.: 0.000 min
 Response: 12111803
 Conc: 500.00 ng/ml



#43 AR-1268-3

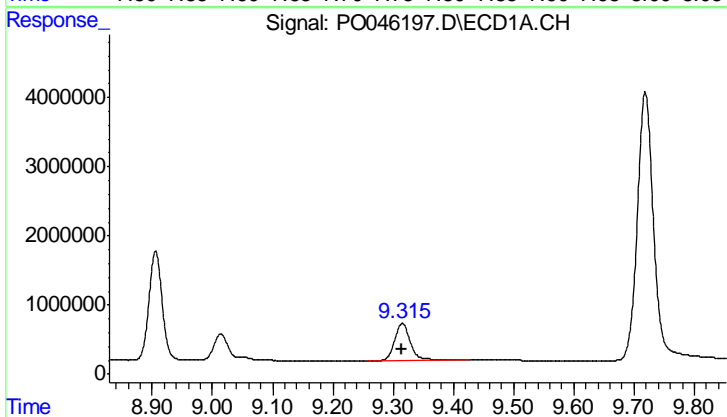
R.T.: 8.906 min
Delta R.T.: 0.000 min
Response: 23841500
Conc: 500.00 ng/ml

Instrument :
ECD_O
ClientSampled :
AR1268ICC500



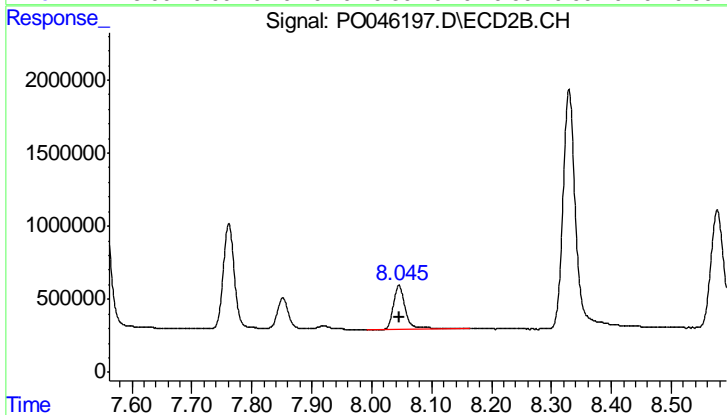
#43 AR-1268-3

R.T.: 7.762 min
Delta R.T.: 0.000 min
Response: 9400064
Conc: 500.00 ng/ml



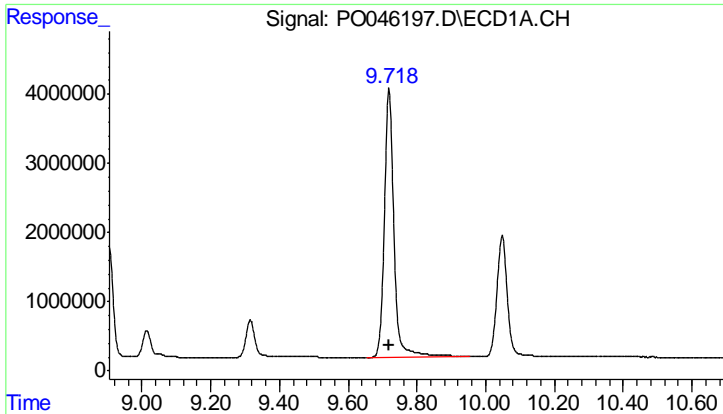
#44 AR-1268-4

R.T.: 9.315 min
Delta R.T.: 0.000 min
Response: 9723895
Conc: 500.00 ng/ml



#44 AR-1268-4

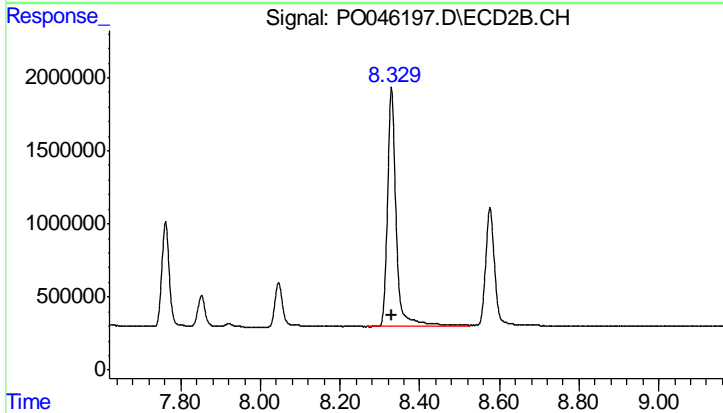
R.T.: 8.045 min
Delta R.T.: 0.000 min
Response: 4183085
Conc: 500.00 ng/ml



#45 AR-1268-5

R.T.: 9.719 min
Delta R.T.: 0.000 min
Response: 74600520
Conc: 500.00 ng/ml

Instrument :
ECD_O
ClientSampled :
AR1268ICC500



#45 AR-1268-5

R.T.: 8.329 min
Delta R.T.: 0.000 min
Response: 24997184
Conc: 500.00 ng/ml