

Data Path : Z:\pestpcbsrv\HPCHEM1\ECD O\Data\PO062518\  
 Data File : PO046205.D  
 Signal(s) : Signal #1: ECD1A.CH Signal #2: ECD2B.CH  
 Acq On : 25 Jun 2018 14:35  
 Operator : SM/UA  
 Sample : J3627-09 10X  
 Misc :  
 ALS Vial : 8 Sample Multiplier: 1

Instrument :  
 ECD\_O  
 ClientSampleId :  
 26KV-CC-5

Integration File signal 1: autoint1.e  
 Integration File signal 2: autoint2.e  
 Quant Time: Jun 25 16:33:08 2018  
 Quant Method : Z:\pestpcbsrv\HPCHEM1\ECD\_O\methods\PO062518.M  
 Quant Title : GC EXTRACTABLES  
 QLast Update : Mon Jun 25 12:49:48 2018  
 Response via : Initial Calibration  
 Integrator: ChemStation 6890 Scale Mode: Small noise peaks clipped

Volume Inj. : 2 µl  
 Signal #1 Phase : ZB-MR1 Signal #2 Phase: ZB-MR2  
 Signal #1 Info : 30Mx0.32mmx 0.50µ Signal #2 Info : 30M x 0.32mm x 0.25µm

Compound	RT#1	RT#2	Resp#1	Resp#2	ng/ml	ng/ml
-----						
System Monitoring Compounds						
1) SA Tetrachlo...	4.378	3.605	1129183	548681	1.932	2.211
2) SA Decachlor...	10.046	8.575	867874	390414	1.882	2.334

Target Compounds

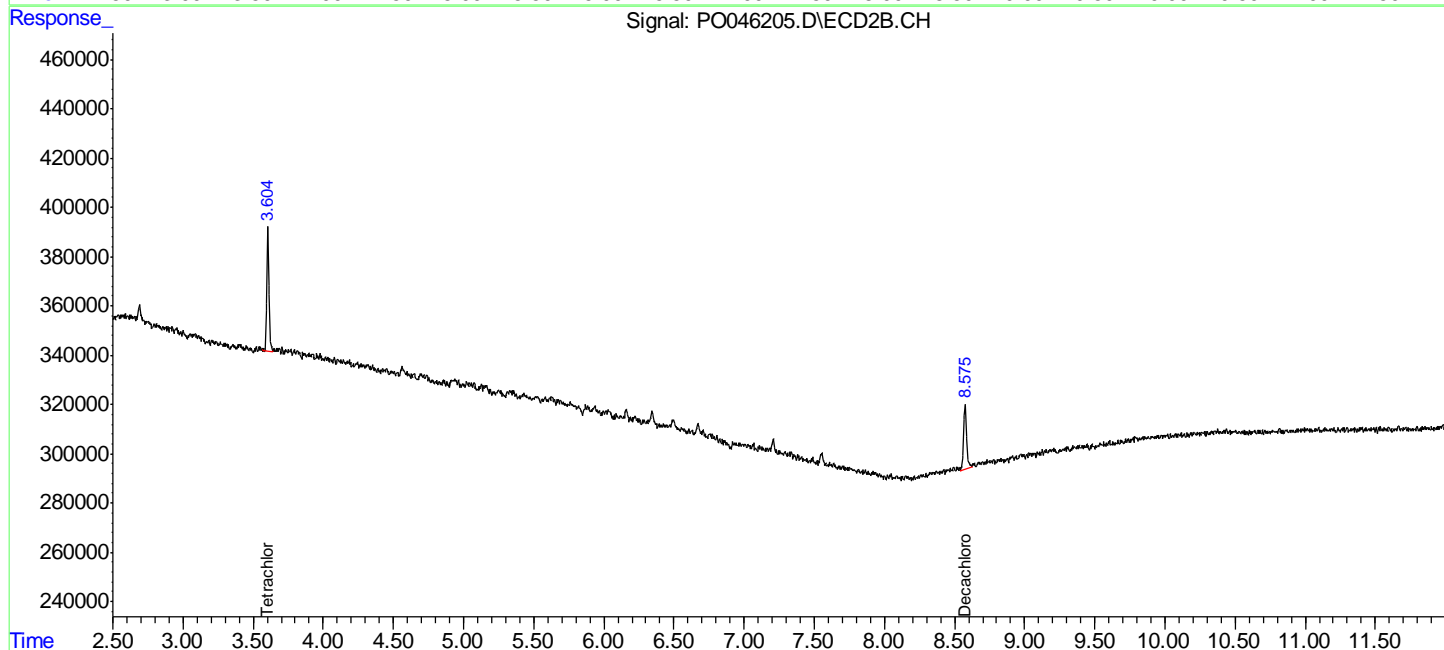
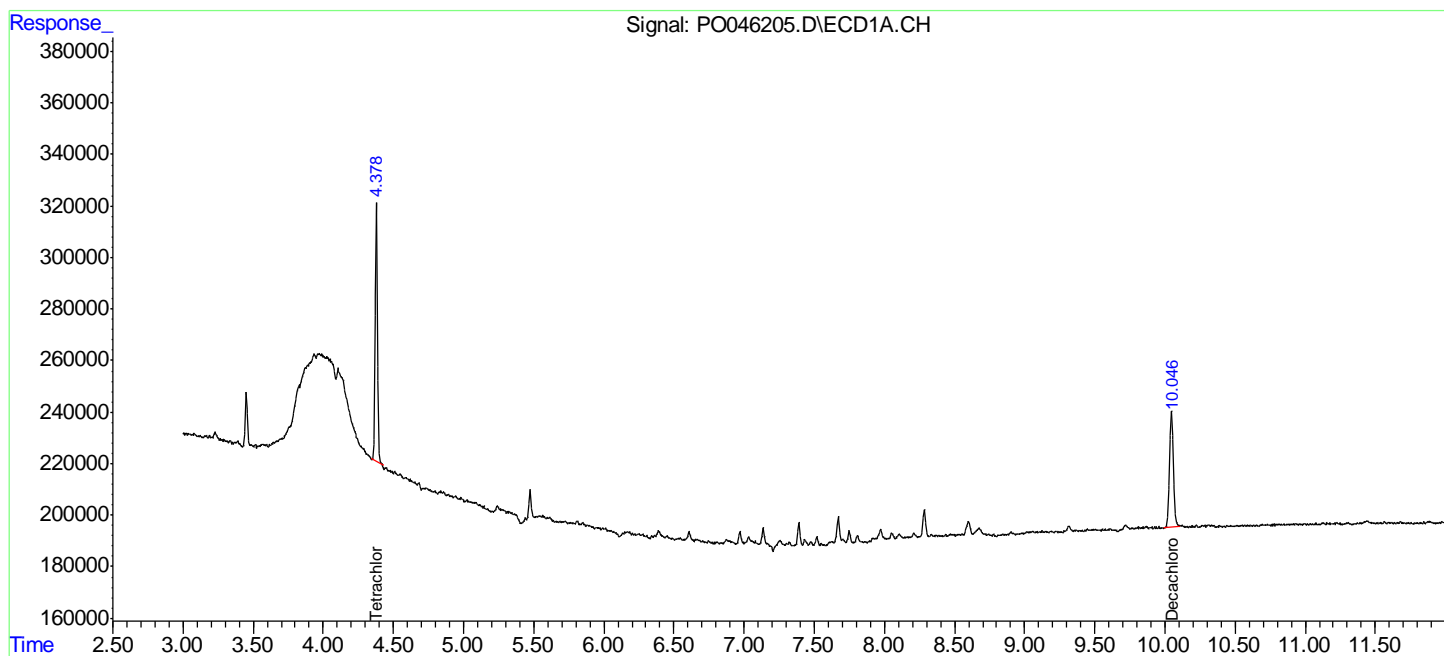
(f)=RT Delta > 1/2 Window (#)=Amounts differ by > 25% (m)=manual int.

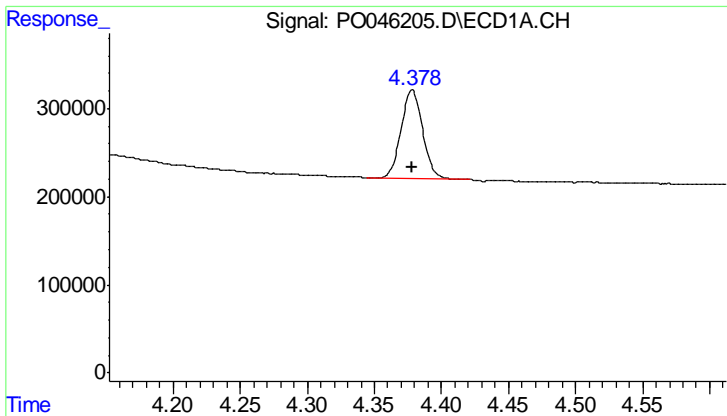
Data Path : Z:\pestpcbsrv\HPCHEM1\ECD O\Data\PO062518\  
 Data File : PO046205.D  
 Signal(s) : Signal #1: ECD1A.CH Signal #2: ECD2B.CH  
 Acq On : 25 Jun 2018 14:35  
 Operator : SM/UA  
 Sample : J3627-09 10X  
 Misc :  
 ALS Vial : 8 Sample Multiplier: 1

Instrument :  
 ECD\_O  
 ClientSampleId :  
 26KV-CC-5

Integration File signal 1: autoint1.e  
 Integration File signal 2: autoint2.e  
 Quant Time: Jun 25 16:33:08 2018  
 Quant Method : Z:\pestpcbsrv\HPCHEM1\ECD\_O\methods\PO062518.M  
 Quant Title : GC EXTRACTABLES  
 QLast Update : Mon Jun 25 12:49:48 2018  
 Response via : Initial Calibration  
 Integrator: ChemStation 6890 Scale Mode: Small noise peaks clipped

Volume Inj. : 2 µl  
 Signal #1 Phase : ZB-MR1 Signal #2 Phase: ZB-MR2  
 Signal #1 Info : 30Mx0.32mmx 0.50µ Signal #2 Info : 30M x 0.32mm x 0.25µm

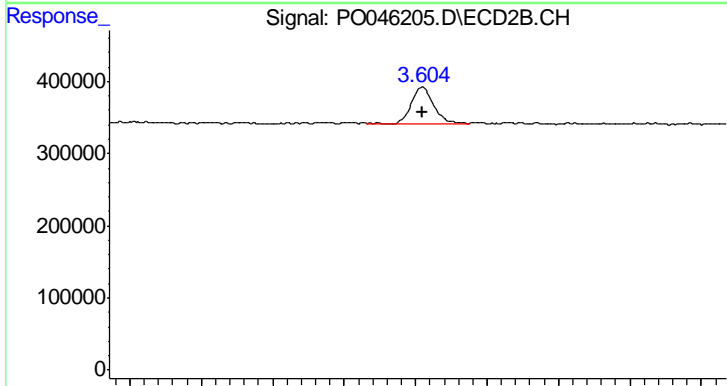




#1 Tetrachloro-m-xylene

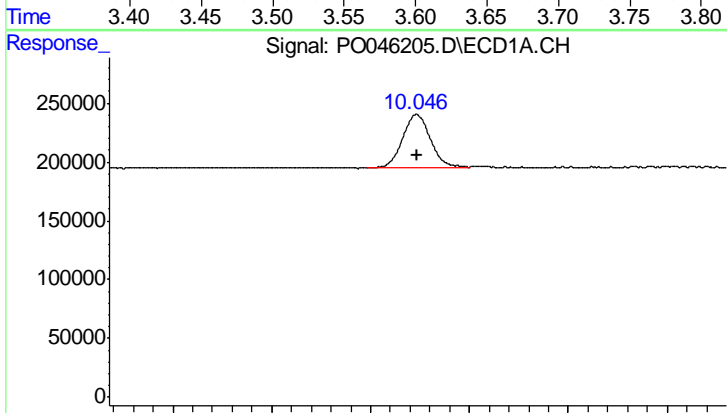
R.T.: 4.378 min  
 Delta R.T.: 0.000 min  
 Response: 1129183  
 Conc: 1.93 ng/ml

Instrument :  
 ECD\_O  
 ClientSampleId :  
 26KV-CC-5



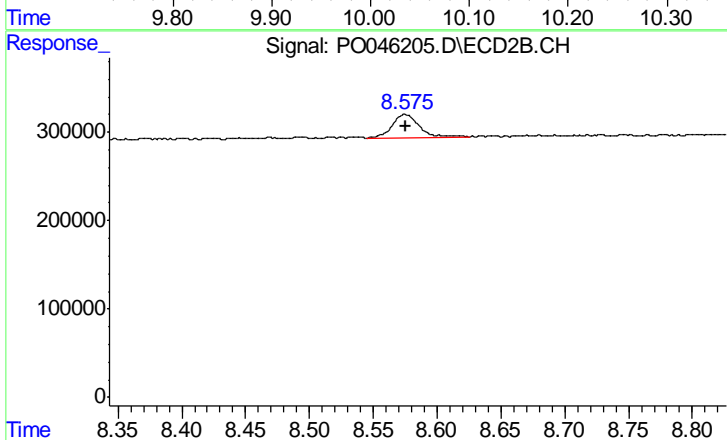
#1 Tetrachloro-m-xylene

R.T.: 3.605 min  
 Delta R.T.: 0.000 min  
 Response: 548681  
 Conc: 2.21 ng/ml



#2 Decachlorobiphenyl

R.T.: 10.046 min  
 Delta R.T.: 0.000 min  
 Response: 867874  
 Conc: 1.88 ng/ml



#2 Decachlorobiphenyl

R.T.: 8.575 min  
 Delta R.T.: 0.000 min  
 Response: 390414  
 Conc: 2.33 ng/ml