

Data Path : Z:\pestpcbsrv\HPCHEM1\ECD_0\Data\P0062519\
 Data File : P0057459.D
 Signal(s) : Signal #1: ECD1A.CH Signal #2: ECD2B.CH
 Acq On : 25 Jun 2019 23:11
 Operator : SM/SJ
 Sample : K3499-07MSD
 Misc :
 ALS Vial : 28 Sample Multiplier: 1

Instrument :
 ECD_0
Client Sampled :
 B-6(17-18)MSD

Manual Integrations
APPROVED
 Ankita
 6/26/2019 1:07:07 PM

Integration File signal 1: autoint1.e
 Integration File signal 2: autoint2.e
 Quant Time: Jun 26 02:02:01 2019
 Quant Method : Z:\pestpcbsrv\HPCHEM1\ECD_0\methods\P0062419.M
 Quant Title : GC EXTRACTABLES
 QLast Update : Mon Jun 24 14:02:43 2019
 Response via : Initial Calibration
 Integrator: ChemStation 6890 Scale Mode: Small noise peaks clipped

Volume Inj. : 2 µl
 Signal #1 Phase : ZB-MR1 Signal #2 Phase: ZB-MR2
 Signal #1 Info : 30Mx0.32mmx 0.50µ Signal #2 Info : 30M x 0.32mm x 0.25µm

Compound	RT#1	RT#2	Resp#1	Resp#2	ng/ml	ng/ml

System Monitoring Compounds						
1) SA Tetrachlo...	4.226	3.554	777007	691603	19.780	19.669
2) SA Decachlor...	9.774	8.474	990892	676438	17.621	18.083
Target Compounds						
3) L1 AR-1016-1	5.387	4.618	50519	34426	28.583	25.749m
4) L1 AR-1016-2	5.408	4.637	88822	47235	34.467	24.262m#
5) L1 AR-1016-3	5.468	4.810	54997	33992	35.281	32.106m
6) L1 AR-1016-4	5.567	4.852	54186	28772	41.784	32.339m
7) L1 AR-1016-5	5.855	5.061	51352	30813	37.570m	26.972m#
31) L7 AR-1260-1	6.970	6.083	99458	79504	35.888	37.146
32) L7 AR-1260-2	7.228	6.268	101349	77272	27.491	28.164
33) L7 AR-1260-3	7.582	6.418	61238	73422	20.156	30.073 #
34) L7 AR-1260-4	7.808	6.885	63479	42949	20.931	20.629
35) L7 AR-1260-5	8.115	7.127	123444	98879	19.740	19.495

(f)=RT Delta > 1/2 Window (#)=Amounts differ by > 25% (m)=manual int.

Data Path : Z:\pestpcbsrv\HPCHEM1\ECD_O\Data\PO062519\
 Data File : PO057459.D
 Signal(s) : Signal #1: ECD1A.CH Signal #2: ECD2B.CH
 Acq On : 25 Jun 2019 23:11
 Operator : SM/SJ
 Sample : K3499-07MSD
 Misc :
 ALS Vial : 28 Sample Multiplier: 1

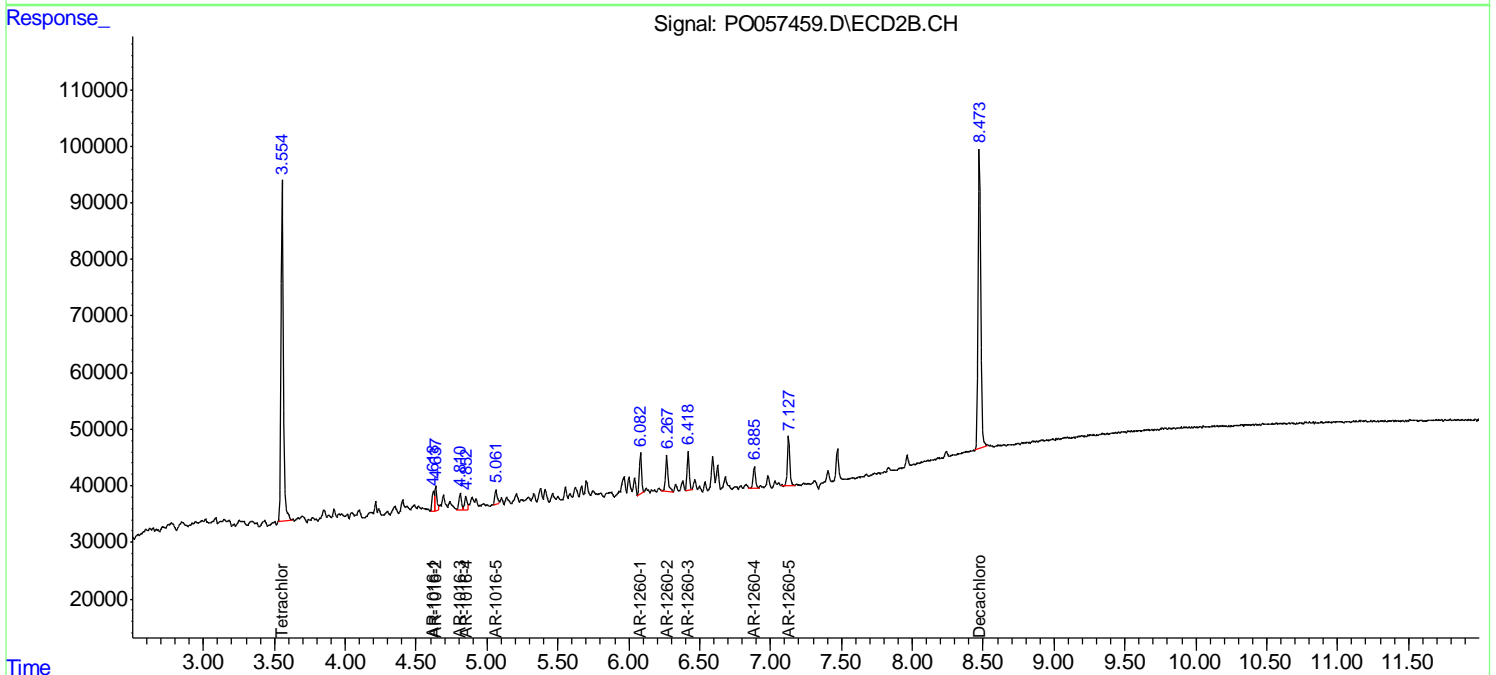
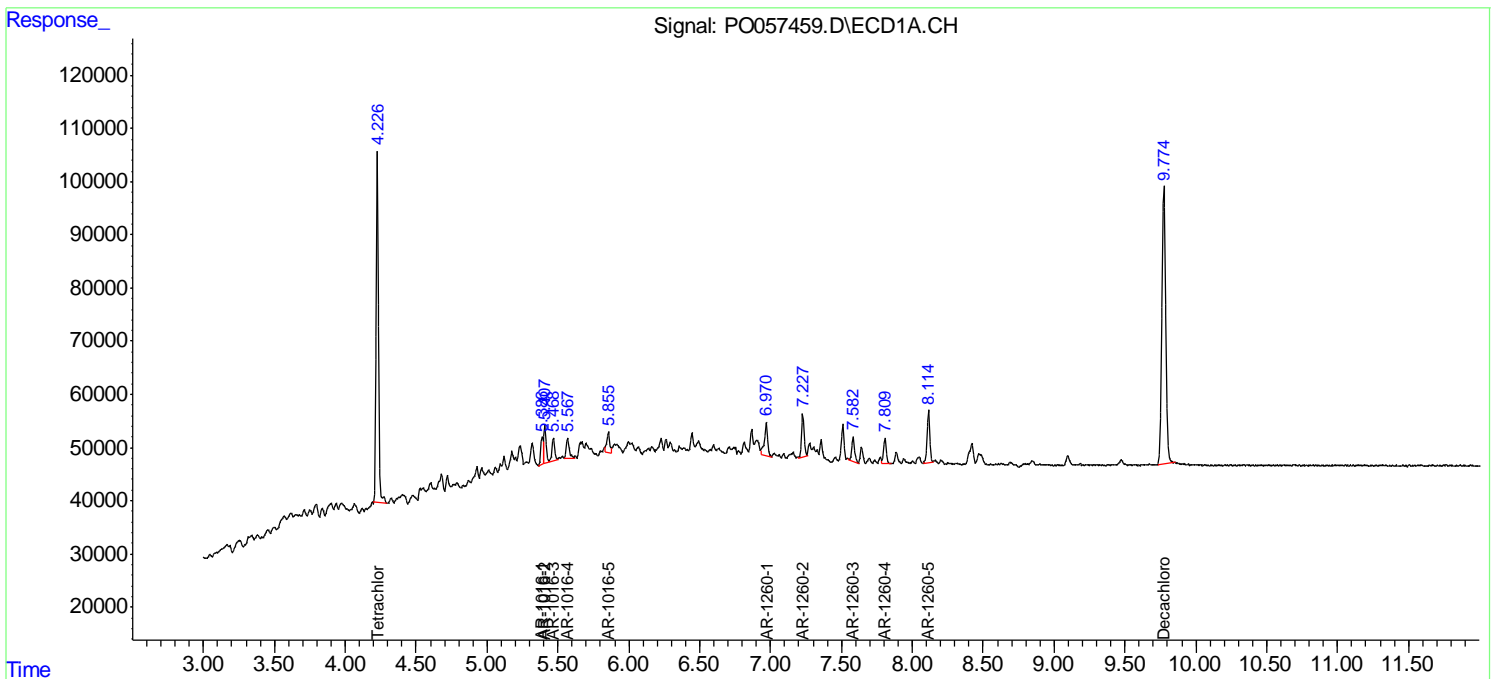
Instrument :
 ECD_O
 Client Sampled :
 B-6(17-18)MSD

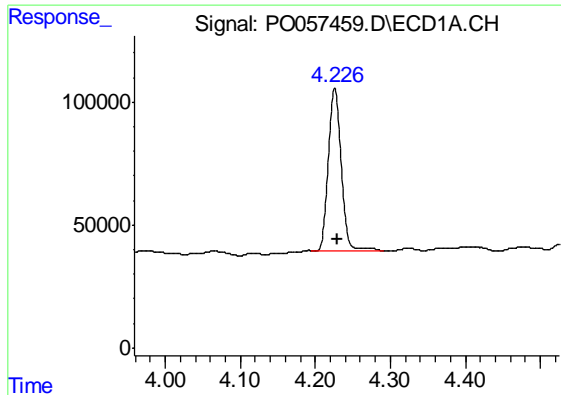
Manual Integrations
 APPROVED

Ankita
 6/26/2019 1:07:07 PM

Integration File signal 1: autoint1.e
 Integration File signal 2: autoint2.e
 Quant Time: Jun 26 02:02:01 2019
 Quant Method : Z:\pestpcbsrv\HPCHEM1\ECD_O\methods\PO062419.M
 Quant Title : GC EXTRACTABLES
 QLast Update : Mon Jun 24 14:02:43 2019
 Response via : Initial Calibration
 Integrator: ChemStation 6890 Scale Mode: Small noise peaks clipped

Volume Inj. : 2 µl
 Signal #1 Phase : ZB-MR1 Signal #2 Phase: ZB-MR2
 Signal #1 Info : 30Mx0.32mmx 0.50µ Signal #2 Info : 30M x 0.32mm x 0.25µm



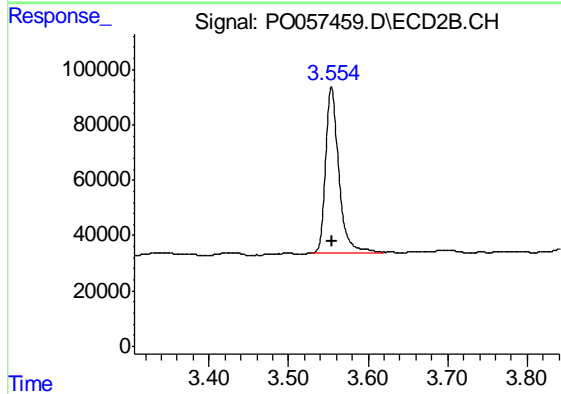


#1 Tetrachloro-m-xylene

R.T.: 4.226 min
 Delta R.T.: -0.004 min
 Response: 777007
 Conc: 19.78 ng/ml

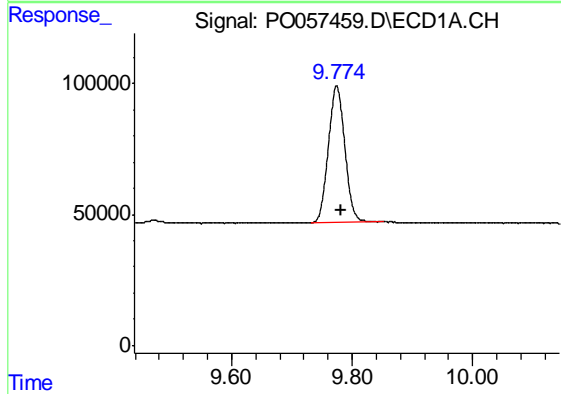
Instrument :
 ECD_O
 ClientSampleId :
 B-6(17-18)MSD

Manual Integrations
 APPROVED
 Ankita
 6/26/2019 1:07:07 PM



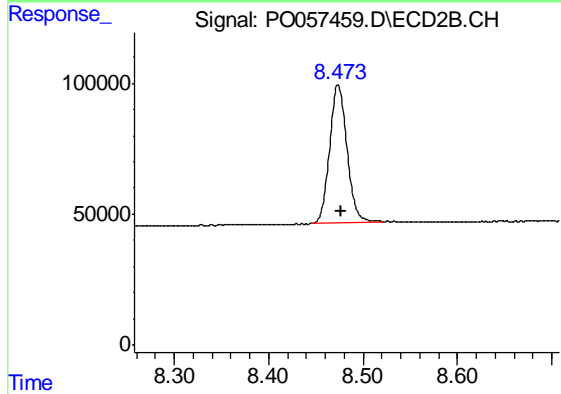
#1 Tetrachloro-m-xylene

R.T.: 3.554 min
 Delta R.T.: -0.001 min
 Response: 691603
 Conc: 19.67 ng/ml



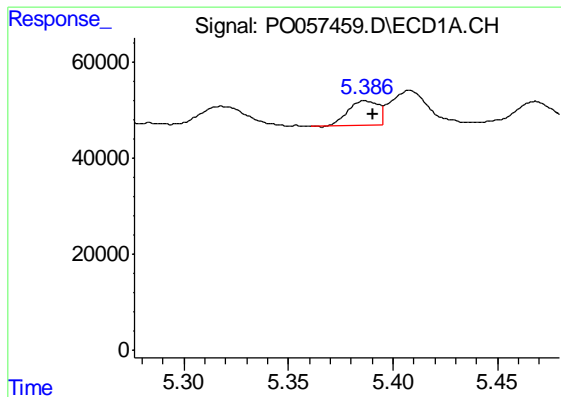
#2 Decachlorobiphenyl

R.T.: 9.774 min
 Delta R.T.: -0.007 min
 Response: 990892
 Conc: 17.62 ng/ml



#2 Decachlorobiphenyl

R.T.: 8.474 min
 Delta R.T.: -0.003 min
 Response: 676438
 Conc: 18.08 ng/ml



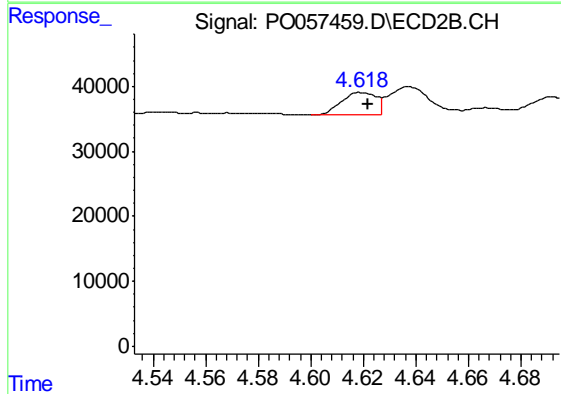
#3 AR-1016-1

R.T.: 5.387 min
 Delta R.T.: -0.004 min
 Response: 50519
 Conc: 28.58 ng/ml

Instrument :
 ECD_O
 ClientSampled :
 B-6(17-18)MSD

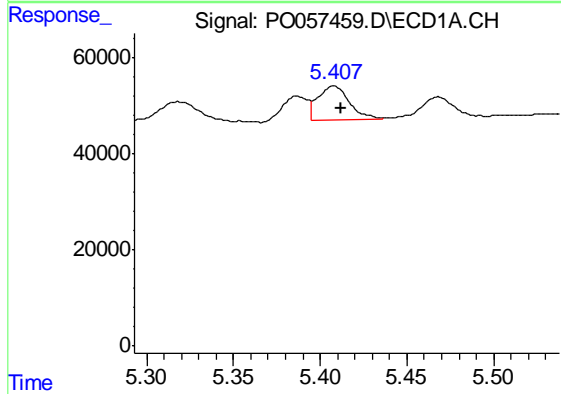
Manual Integrations
 APPROVED

Ankita
 6/26/2019 1:07:07 PM



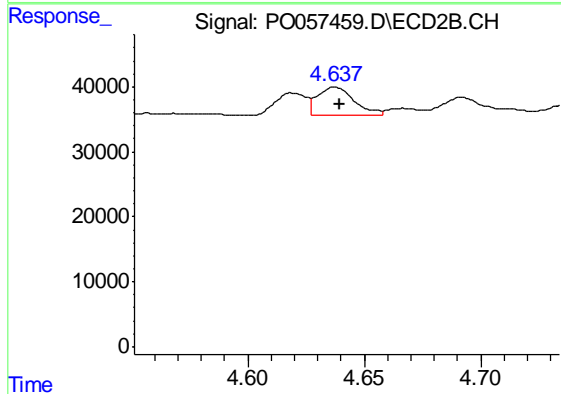
#3 AR-1016-1

R.T.: 4.618 min
 Delta R.T.: -0.004 min
 Response: 34426
 Conc: 25.75 ng/ml m



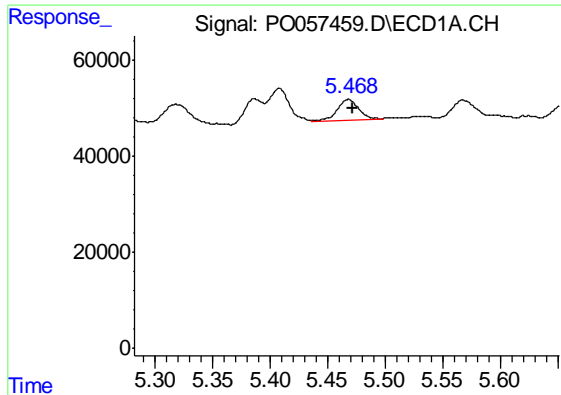
#4 AR-1016-2

R.T.: 5.408 min
 Delta R.T.: -0.004 min
 Response: 88822
 Conc: 34.47 ng/ml



#4 AR-1016-2

R.T.: 4.637 min
 Delta R.T.: -0.003 min
 Response: 47235
 Conc: 24.26 ng/ml m



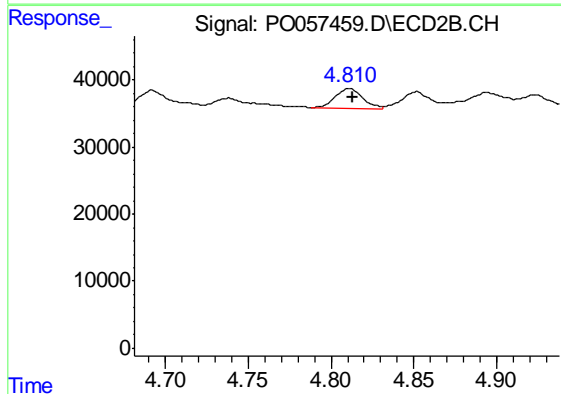
#5 AR-1016-3

R.T.: 5.468 min
 Delta R.T.: -0.004 min
 Response: 54997
 Conc: 35.28 ng/ml

Instrument :
 ECD_O
 ClientSampled :
 B-6(17-18)MSD

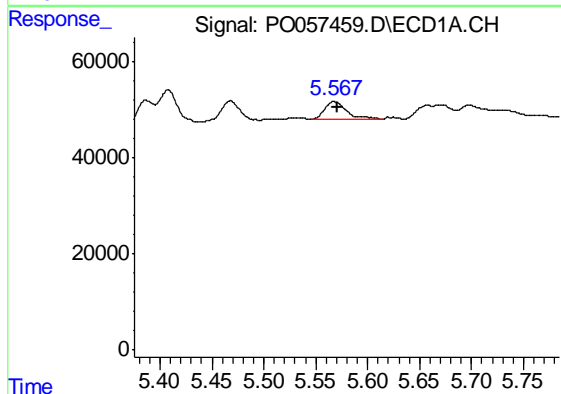
Manual Integrations
 APPROVED

Ankita
 6/26/2019 1:07:07 PM



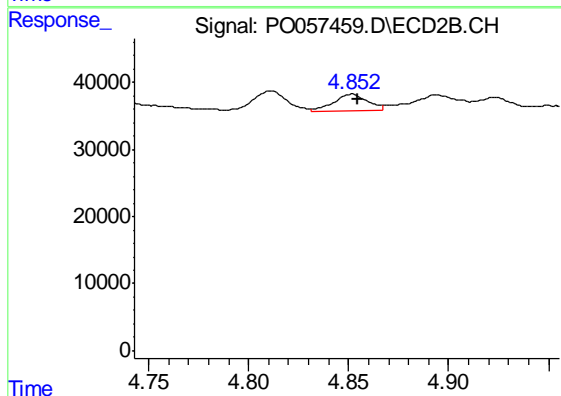
#5 AR-1016-3

R.T.: 4.810 min
 Delta R.T.: -0.003 min
 Response: 33992
 Conc: 32.11 ng/ml m



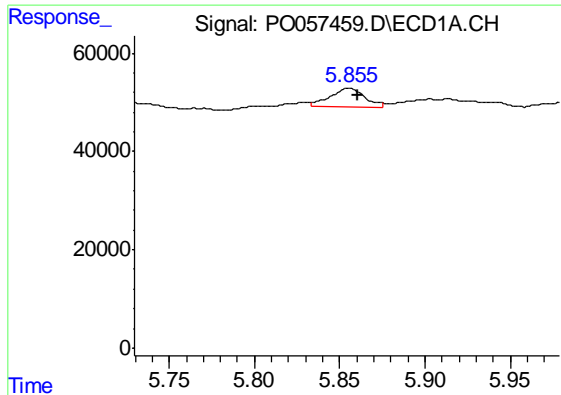
#6 AR-1016-4

R.T.: 5.567 min
 Delta R.T.: -0.004 min
 Response: 54186
 Conc: 41.78 ng/ml



#6 AR-1016-4

R.T.: 4.852 min
 Delta R.T.: -0.003 min
 Response: 28772
 Conc: 32.34 ng/ml m



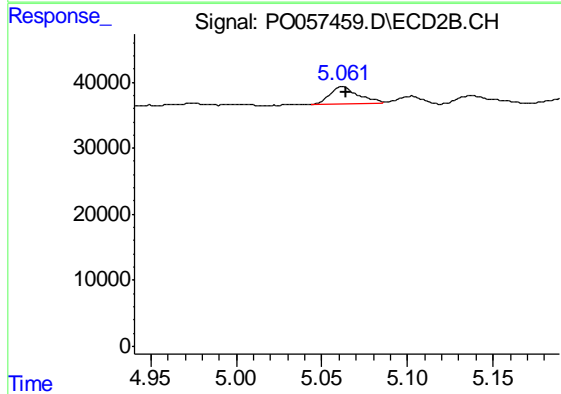
#7 AR-1016-5

R.T.: 5.855 min
 Delta R.T.: -0.006 min
 Response: 51352
 Conc: 37.57 ng/ml m

Instrument :
 ECD_O
 ClientSampled :
 B-6(17-18)MSD

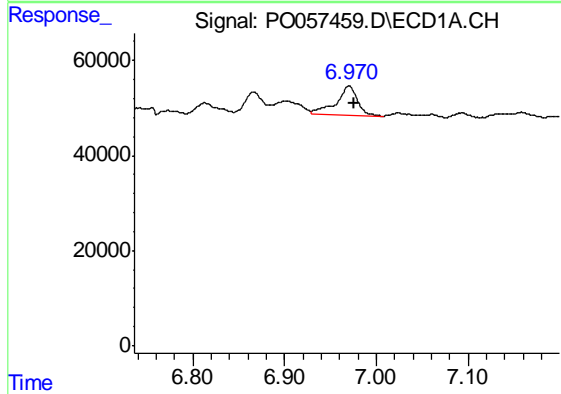
Manual Integrations
 APPROVED

Ankita
 6/26/2019 1:07:07 PM



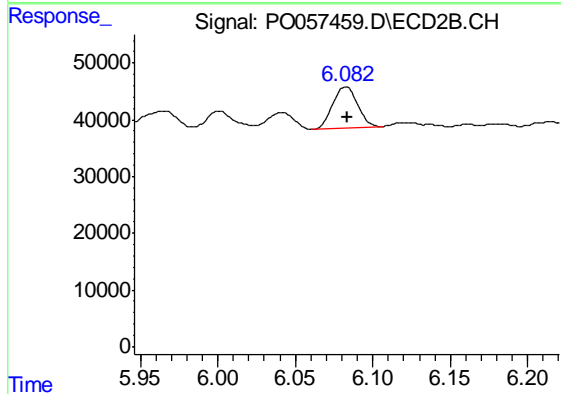
#7 AR-1016-5

R.T.: 5.061 min
 Delta R.T.: -0.003 min
 Response: 30813
 Conc: 26.97 ng/ml m



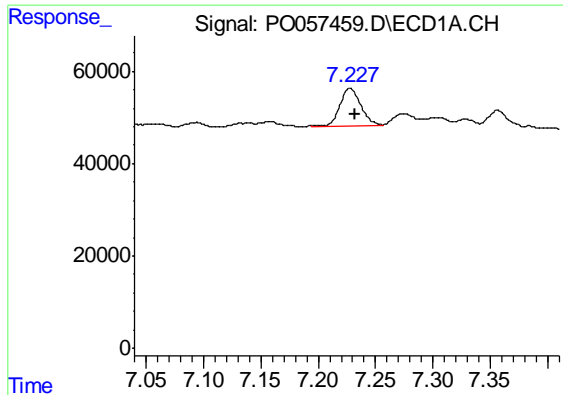
#31 AR-1260-1

R.T.: 6.970 min
 Delta R.T.: -0.005 min
 Response: 99458
 Conc: 35.89 ng/ml



#31 AR-1260-1

R.T.: 6.083 min
 Delta R.T.: -0.001 min
 Response: 79504
 Conc: 37.15 ng/ml



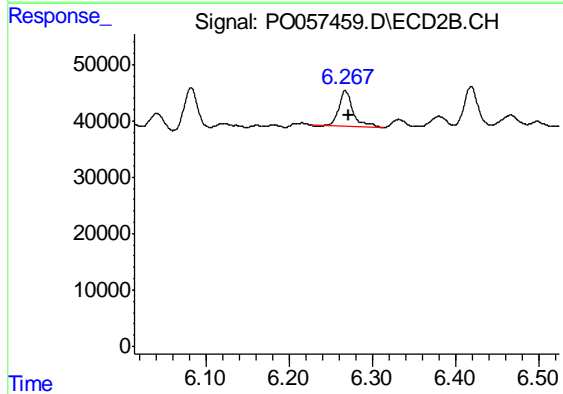
#32 AR-1260-2

R.T.: 7.228 min
 Delta R.T.: -0.004 min
 Response: 101349
 Conc: 27.49 ng/ml

Instrument :
 ECD_O
 ClientSampleId :
 B-6(17-18)MSD

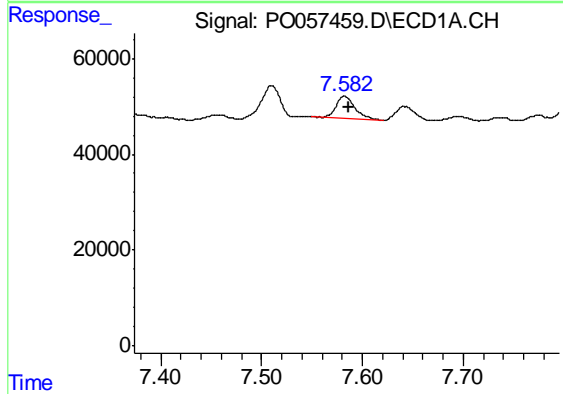
Manual Integrations
 APPROVED

Ankita
 6/26/2019 1:07:07 PM



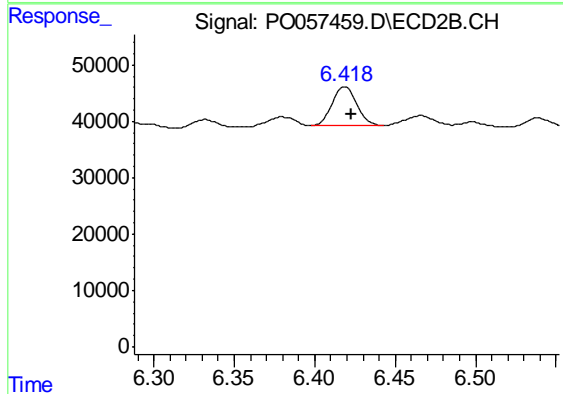
#32 AR-1260-2

R.T.: 6.268 min
 Delta R.T.: -0.003 min
 Response: 77272
 Conc: 28.16 ng/ml



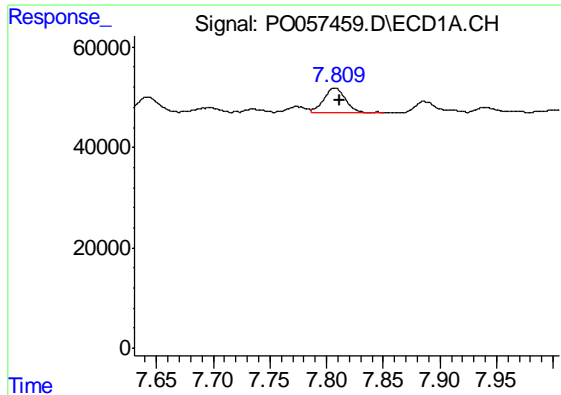
#33 AR-1260-3

R.T.: 7.582 min
 Delta R.T.: -0.004 min
 Response: 61238
 Conc: 20.16 ng/ml



#33 AR-1260-3

R.T.: 6.418 min
 Delta R.T.: -0.004 min
 Response: 73422
 Conc: 30.07 ng/ml



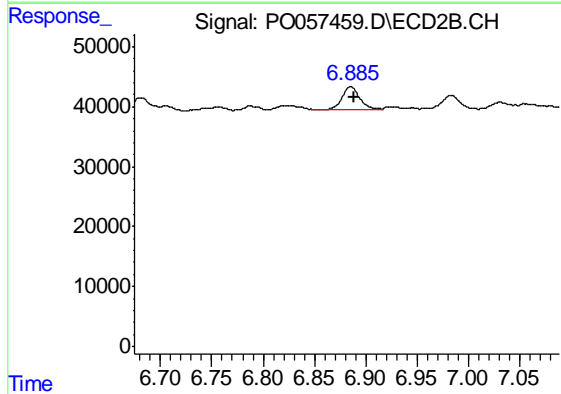
#34 AR-1260-4

R.T.: 7.808 min
 Delta R.T.: -0.004 min
 Response: 63479
 Conc: 20.93 ng/ml

Instrument :
 ECD_O
 ClientSampleId :
 B-6(17-18)MSD

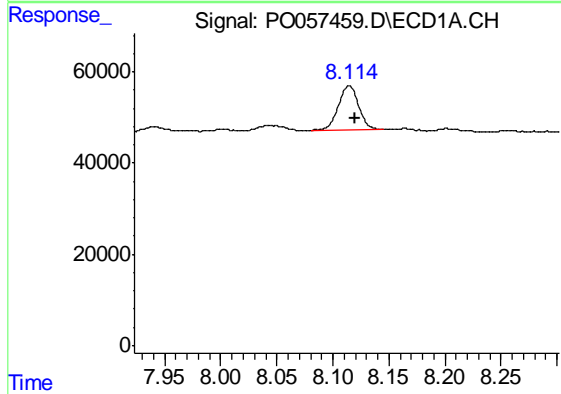
Manual Integrations
 APPROVED

Ankita
 6/26/2019 1:07:07 PM



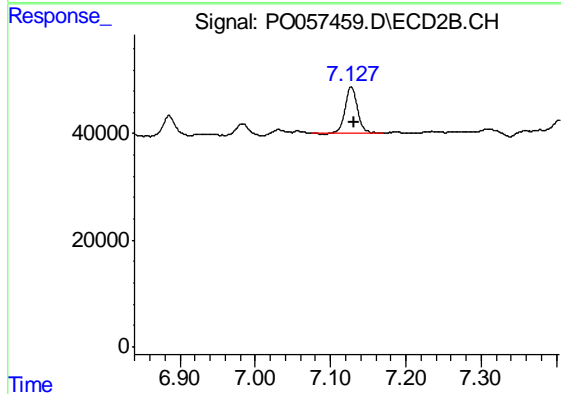
#34 AR-1260-4

R.T.: 6.885 min
 Delta R.T.: -0.003 min
 Response: 42949
 Conc: 20.63 ng/ml



#35 AR-1260-5

R.T.: 8.115 min
 Delta R.T.: -0.005 min
 Response: 123444
 Conc: 19.74 ng/ml



#35 AR-1260-5

R.T.: 7.127 min
 Delta R.T.: -0.004 min
 Response: 98879
 Conc: 19.49 ng/ml