

Data Path : Z:\pestpcbsrv\HPCHEM1\ECD_O\Data\PO062818\
 Data File : PO046364.D
 Signal(s) : Signal #1: ECD1A.CH Signal #2: ECD2B.CH
 Acq On : 28 Jun 2018 19:05
 Operator : SM/UA
 Sample : I.BLK
 Misc :
 ALS Vial : 2 Sample Multiplier: 1

Instrument :
 ECD_O
 ClientSampleId :
 I.BLK

Integration File signal 1: autoint1.e
 Integration File signal 2: autoint2.e
 Quant Time: Jun 29 07:07:58 2018
 Quant Method : Z:\pestpcbsrv\HPCHEM1\ECD_O\methods\PO062818.M
 Quant Title : GC EXTRACTABLES
 QLast Update : Thu Jun 28 11:20:48 2018
 Response via : Initial Calibration
 Integrator: ChemStation 6890 Scale Mode: Small noise peaks clipped

Volume Inj. : 2 µl
 Signal #1 Phase : ZB-MR1 Signal #2 Phase: ZB-MR2
 Signal #1 Info : 30Mx0.32mmx 0.50µ Signal #2 Info : 30M x 0.32mm x 0.25µm

Compound	RT#1	RT#2	Resp#1	Resp#2	ng/ml	ng/ml
----------	------	------	--------	--------	-------	-------

 System Monitoring Compounds

1) SA Tetrachlo...	4.385	3.613	8068360	4161346	19.623	24.684 #
2) SA Decachlor...	10.049	8.574	5049033	2000594	19.239	18.858

Target Compounds

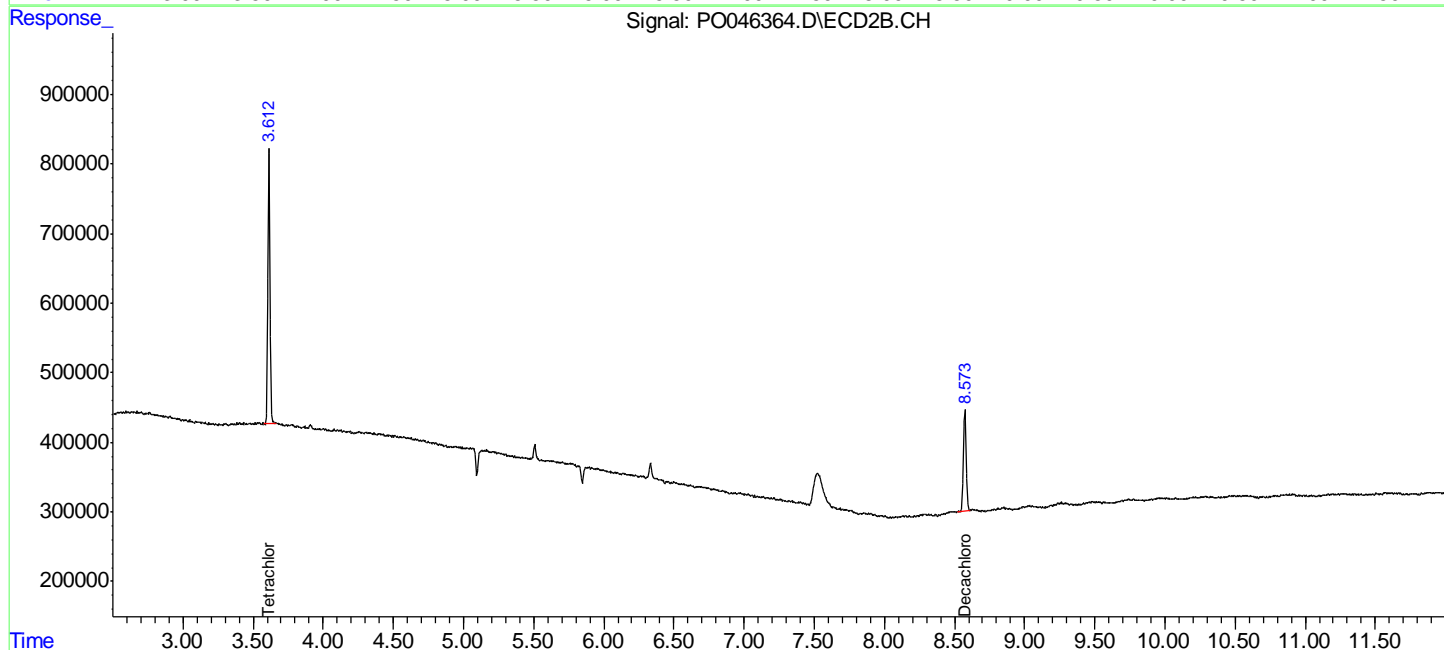
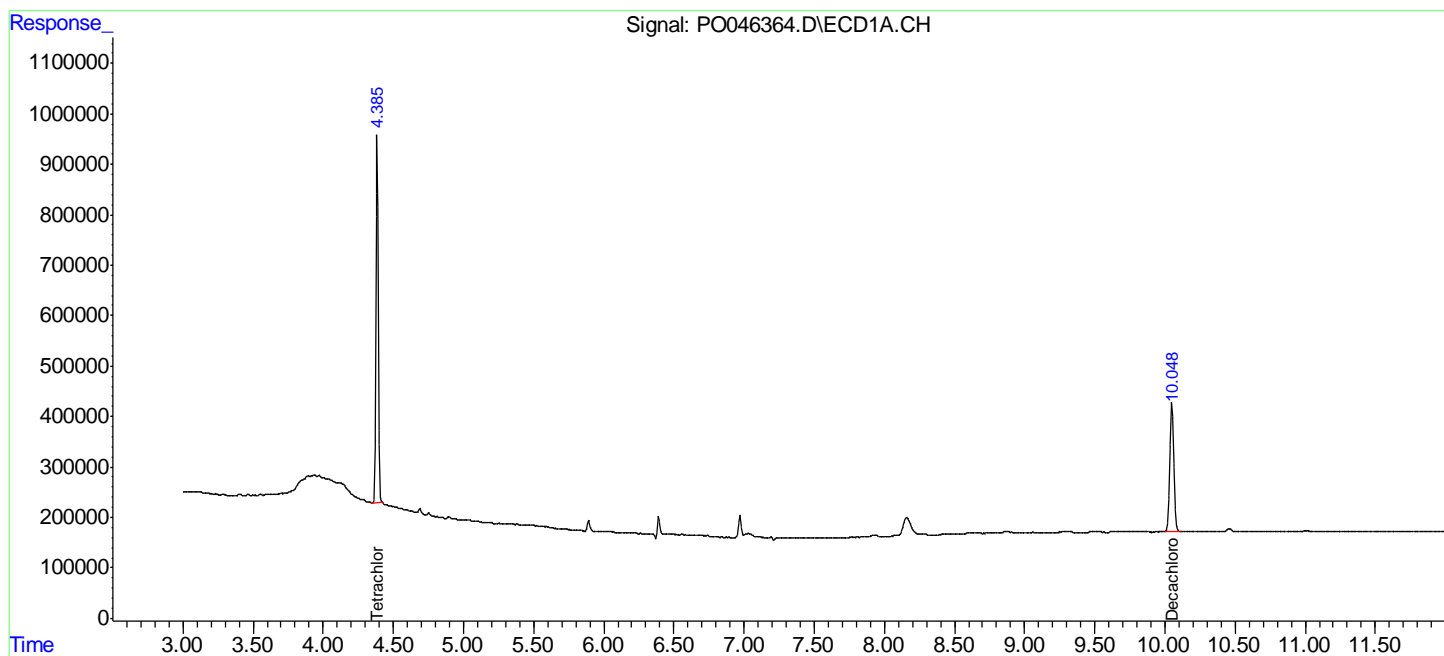
(f)=RT Delta > 1/2 Window (#)=Amounts differ by > 25% (m)=manual int.

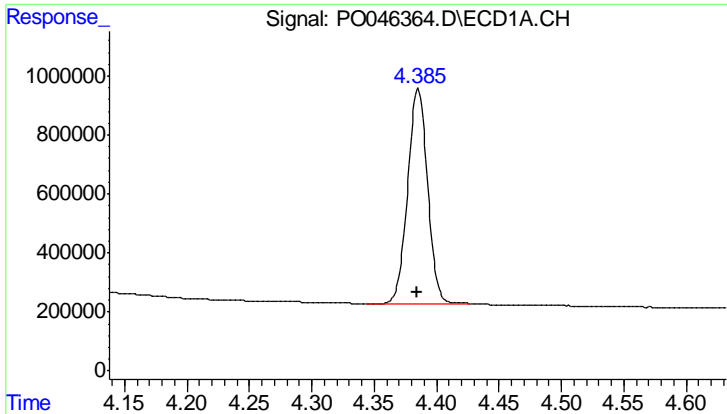
Data Path : Z:\pestpcbsrv\HPCHEM1\ECD_O\Data\PO062818\
 Data File : PO046364.D
 Signal(s) : Signal #1: ECD1A.CH Signal #2: ECD2B.CH
 Acq On : 28 Jun 2018 19:05
 Operator : SM/UA
 Sample : I.BLK
 Misc :
 ALS Vial : 2 Sample Multiplier: 1

Instrument :
 ECD_O
 ClientSampled :
 I.BLK

Integration File signal 1: autoint1.e
 Integration File signal 2: autoint2.e
 Quant Time: Jun 29 07:07:58 2018
 Quant Method : Z:\pestpcbsrv\HPCHEM1\ECD_O\methods\PO062818.M
 Quant Title : GC EXTRACTABLES
 QLast Update : Thu Jun 28 11:20:48 2018
 Response via : Initial Calibration
 Integrator: ChemStation 6890 Scale Mode: Small noise peaks clipped

Volume Inj. : 2 µl
 Signal #1 Phase : ZB-MR1 Signal #2 Phase: ZB-MR2
 Signal #1 Info : 30Mx0.32mmx 0.50µ Signal #2 Info : 30M x 0.32mm x 0.25µm

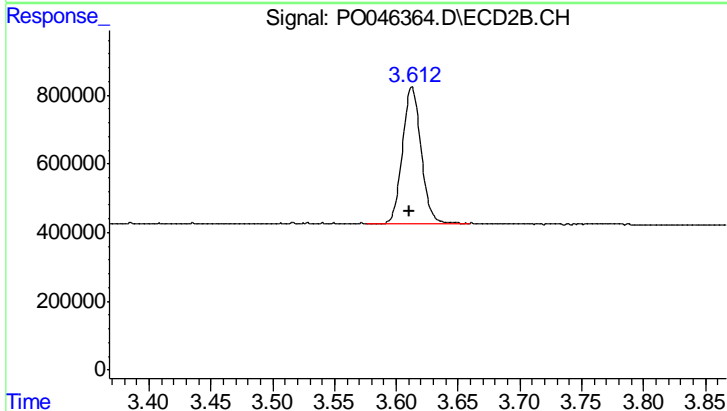




#1 Tetrachloro-m-xylene

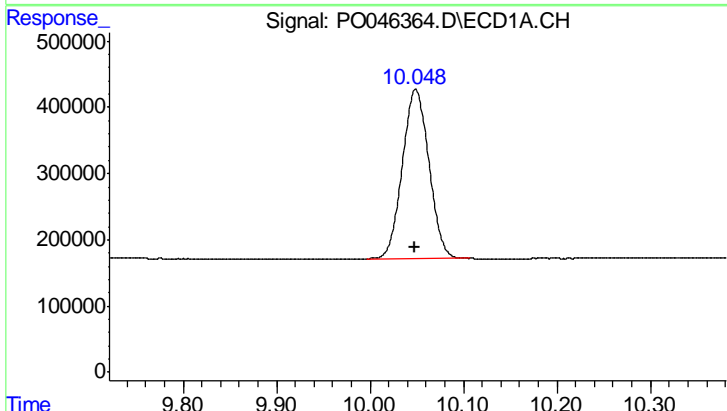
R.T.: 4.385 min
 Delta R.T.: 0.001 min
 Response: 8068360
 Conc: 19.62 ng/ml

Instrument :
 ECD_O
 ClientSampled :
 I.BLK



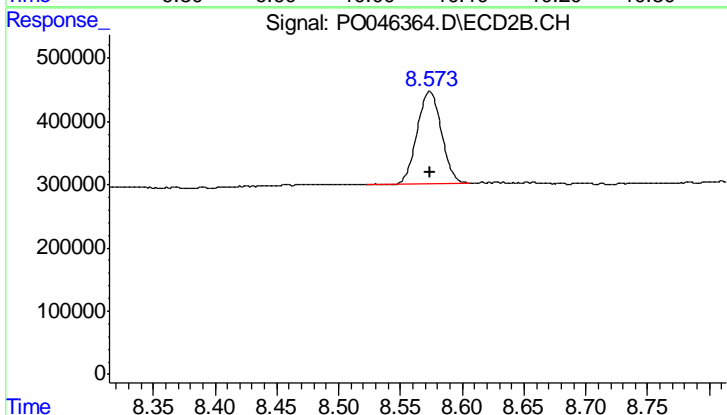
#1 Tetrachloro-m-xylene

R.T.: 3.613 min
 Delta R.T.: 0.002 min
 Response: 4161346
 Conc: 24.68 ng/ml



#2 Decachlorobiphenyl

R.T.: 10.049 min
 Delta R.T.: 0.000 min
 Response: 5049033
 Conc: 19.24 ng/ml



#2 Decachlorobiphenyl

R.T.: 8.574 min
 Delta R.T.: 0.000 min
 Response: 2000594
 Conc: 18.86 ng/ml