

Data Path : Z:\pestpcbsrv\HPCHEM1\ECD O\Data\PO062818\
 Data File : PO046341.D
 Signal(s) : Signal #1: ECD1A.CH Signal #2: ECD2B.CH
 Acq On : 28 Jun 2018 12:39
 Operator : SM/UA
 Sample : J3680-01RE
 Misc :
 ALS Vial : 5 Sample Multiplier: 1

Instrument :
 ECD_O
 ClientSampleId :
 FK-BPM-01-E6-F6-E6A-F6ARE

Manual Integrations
 APPROVED

Sohil
 6/29/2018 4:32:29 PM

Integration File signal 1: autoint1.e
 Integration File signal 2: autoint2.e
 Quant Time: Jun 28 13:06:32 2018
 Quant Method : Z:\pestpcbsrv\HPCHEM1\ECD_O\methods\PO062818.M
 Quant Title : GC EXTRACTABLES
 QLast Update : Thu Jun 28 11:20:48 2018
 Response via : Initial Calibration
 Integrator: ChemStation 6890 Scale Mode: Small noise peaks clipped

Volume Inj. : 2 µl
 Signal #1 Phase : ZB-MR1 Signal #2 Phase: ZB-MR2
 Signal #1 Info : 30Mx0.32mmx 0.50µ Signal #2 Info : 30M x 0.32mm x 0.25µm

Compound	RT#1	RT#2	Resp#1	Resp#2	nq/ml	nq/ml
----------	------	------	--------	--------	-------	-------

 System Monitoring Compounds

1) SA Tetrachlo...	4.384	3.611	5785391	2700778	14.070m	16.021m
2) SA Decachlor...	10.049	8.573	2784037	1154309	10.609	10.881m

Target Compounds

(f)=RT Delta > 1/2 Window (#)=Amounts differ by > 25% (m)=manual int.

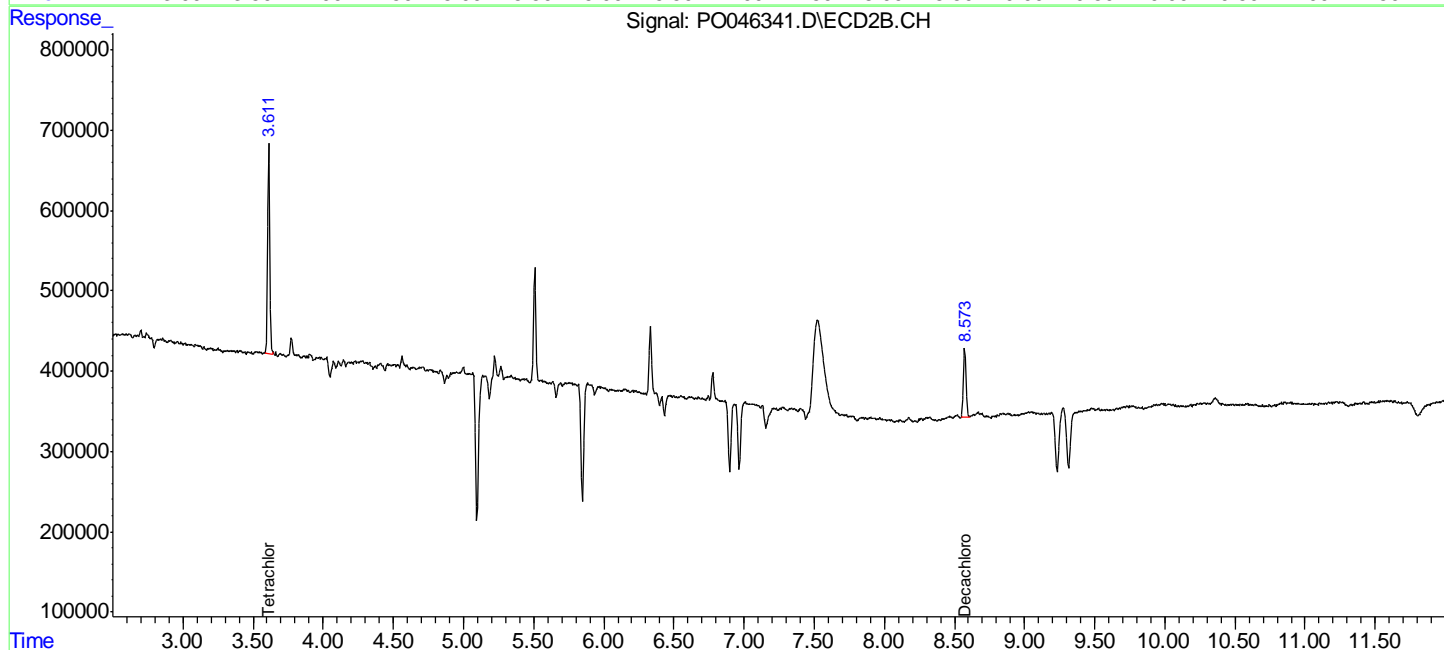
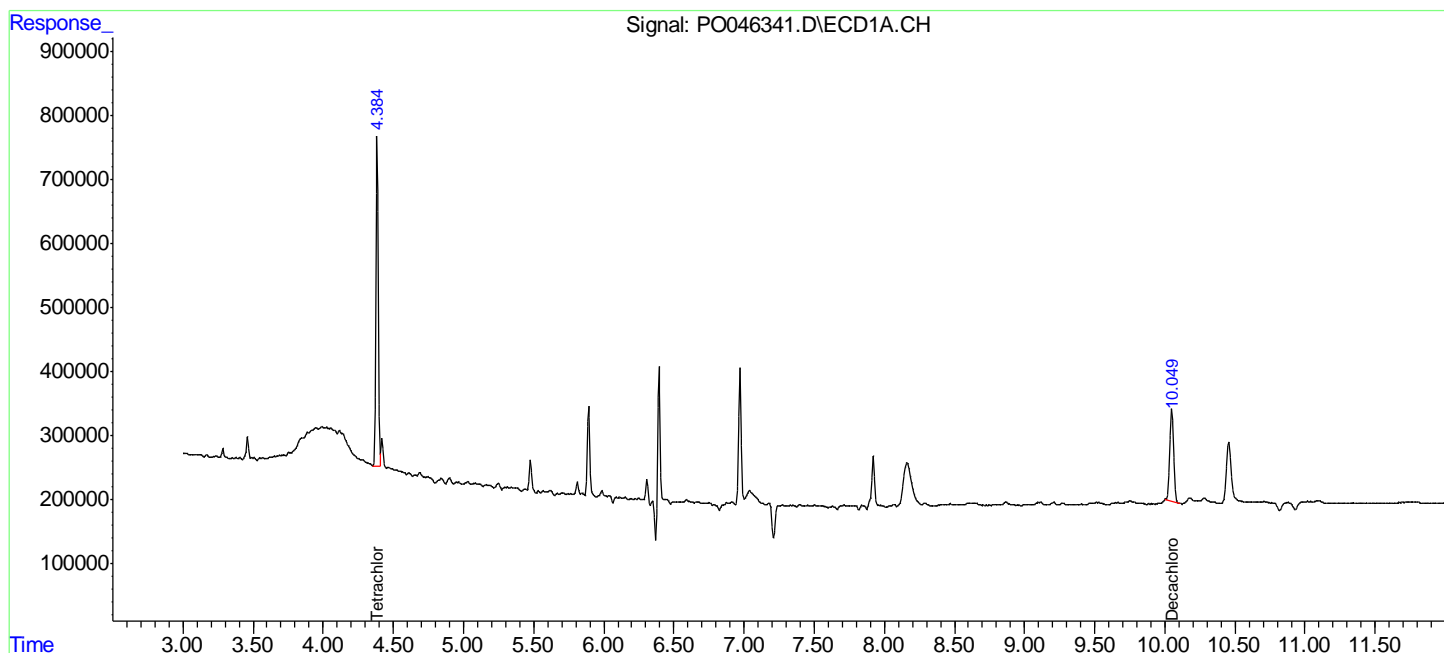
Data Path : Z:\pestpcbsrv\HPCHEM1\ECD O\Data\PO062818\
 Data File : PO046341.D
 Signal(s) : Signal #1: ECD1A.CH Signal #2: ECD2B.CH
 Acq On : 28 Jun 2018 12:39
 Operator : SM/UA
 Sample : J3680-01RE
 Misc :
 ALS Vial : 5 Sample Multiplier: 1

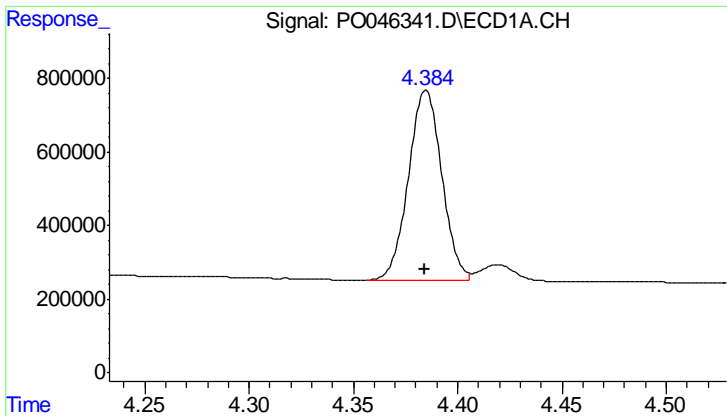
Instrument :
 ECD_O
ClientSampled :
 FK-BPM-01-E6-F6-E6A-F6ARE

Manual Integrations
APPROVED
 Sohil
 6/29/2018 4:32:29 PM

Integration File signal 1: autoint1.e
 Integration File signal 2: autoint2.e
 Quant Time: Jun 28 13:06:32 2018
 Quant Method : Z:\pestpcbsrv\HPCHEM1\ECD_O\methods\PO062818.M
 Quant Title : GC EXTRACTABLES
 QLast Update : Thu Jun 28 11:20:48 2018
 Response via : Initial Calibration
 Integrator: ChemStation 6890 Scale Mode: Small noise peaks clipped

Volume Inj. : 2 ul
 Signal #1 Phase : ZB-MR1 Signal #2 Phase: ZB-MR2
 Signal #1 Info : 30Mx0.32mmx 0.50µ Signal #2 Info : 30M x 0.32mm x 0.25µm





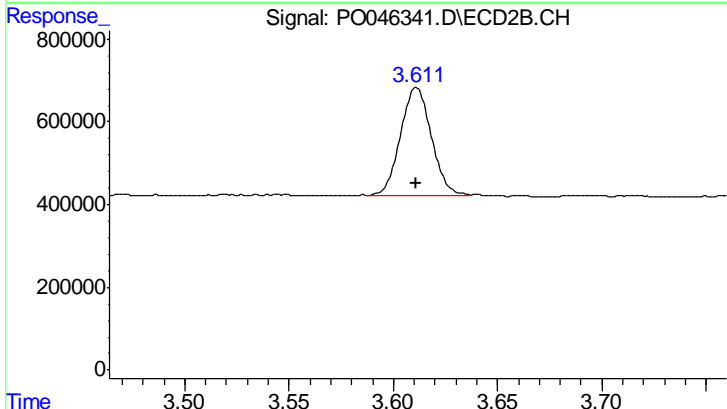
#1 Tetrachloro-m-xylene

R.T.: 4.384 min
 Delta R.T.: 0.000 min
 Response: 5785391
 Conc: 14.07 ng/ml

Instrument :
 ECD_O
 ClientSampled :
 FK-BPM-01-E6-F6-E6A-F6ARE

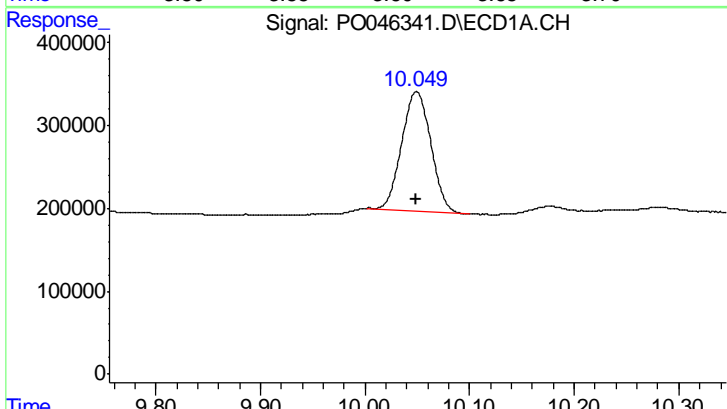
Manual Integrations
 APPROVED

Sohil
 6/29/2018 4:32:29 PM



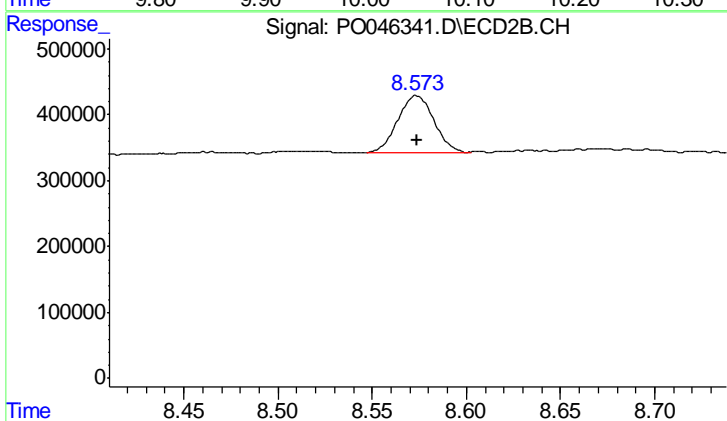
#1 Tetrachloro-m-xylene

R.T.: 3.611 min
 Delta R.T.: 0.000 min
 Response: 2700778
 Conc: 16.02 ng/ml m



#2 Decachlorobiphenyl

R.T.: 10.049 min
 Delta R.T.: 0.001 min
 Response: 2784037
 Conc: 10.61 ng/ml



#2 Decachlorobiphenyl

R.T.: 8.573 min
 Delta R.T.: -0.001 min
 Response: 1154309
 Conc: 10.88 ng/ml m