

Data Path : Z:\pestpcbsrv\HPCHEM1\ECD_0\Data\P0070819\
 Data File : P0057730.D
 Signal(s) : Signal #1: ECD1A.CH Signal #2: ECD2B.CH
 Acq On : 08 Jul 2019 11:06
 Operator : SM/SJ
 Sample : AR1660CCC500
 Misc :
 ALS Vial : 3 Sample Multiplier: 1

Instrument :
 ECD_0
ClientSampleId :
 AR1660CCC500

Manual Integrations
APPROVED
 Ankita
 7/9/2019 9:35:48 AM

Integration File signal 1: autoint1.e
 Integration File signal 2: autoint2.e
 Quant Time: Jul 08 12:57:08 2019
 Quant Method : Z:\pestpcbsrv\HPCHEM1\ECD_0\methods\P0062419.M
 Quant Title : GC EXTRACTABLES
 QLast Update : Mon Jun 24 14:02:43 2019
 Response via : Initial Calibration
 Integrator: ChemStation 6890 Scale Mode: Small noise peaks clipped

Volume Inj. : 2 µl
 Signal #1 Phase : ZB-MR1 Signal #2 Phase: ZB-MR2
 Signal #1 Info : 30Mx0.32mmx 0.50µ Signal #2 Info : 30M x 0.32mm x 0.25µm

Compound	RT#1	RT#2	Resp#1	Resp#2	ng/ml	ng/ml

System Monitoring Compounds						
1) SA Tetrachlo...	4.212	3.546	1996100	1775847	50.815	50.503
2) SA Decachlor...	9.745	8.458	2880135	1869832	51.218m	49.986
Target Compounds						
3) L1 AR-1016-1	5.370	4.610	893665	637765	505.621m	477.019m
4) L1 AR-1016-2	5.392	4.627	1228644	904043	476.776m	464.355m
5) L1 AR-1016-3	5.453	4.801	745872	504989	478.474	476.972m
6) L1 AR-1016-4	5.551	4.842	659515	411157	508.575m	462.127m
7) L1 AR-1016-5	5.840	5.053	709145	516256	518.820m	451.903
31) L7 AR-1260-1	6.953	6.069	1414759	1054353	510.491	492.621
32) L7 AR-1260-2	7.208	6.258	1975415	1369529	535.837m	499.168
33) L7 AR-1260-3	7.565	6.408	1668765	1223000	549.272	500.921
34) L7 AR-1260-4	7.790	6.874	1588242	1059818	523.700	509.028
35) L7 AR-1260-5	8.095	7.116	3455967	2675410	552.640m	527.472

(f)=RT Delta > 1/2 Window (#)=Amounts differ by > 25% (m)=manual int.

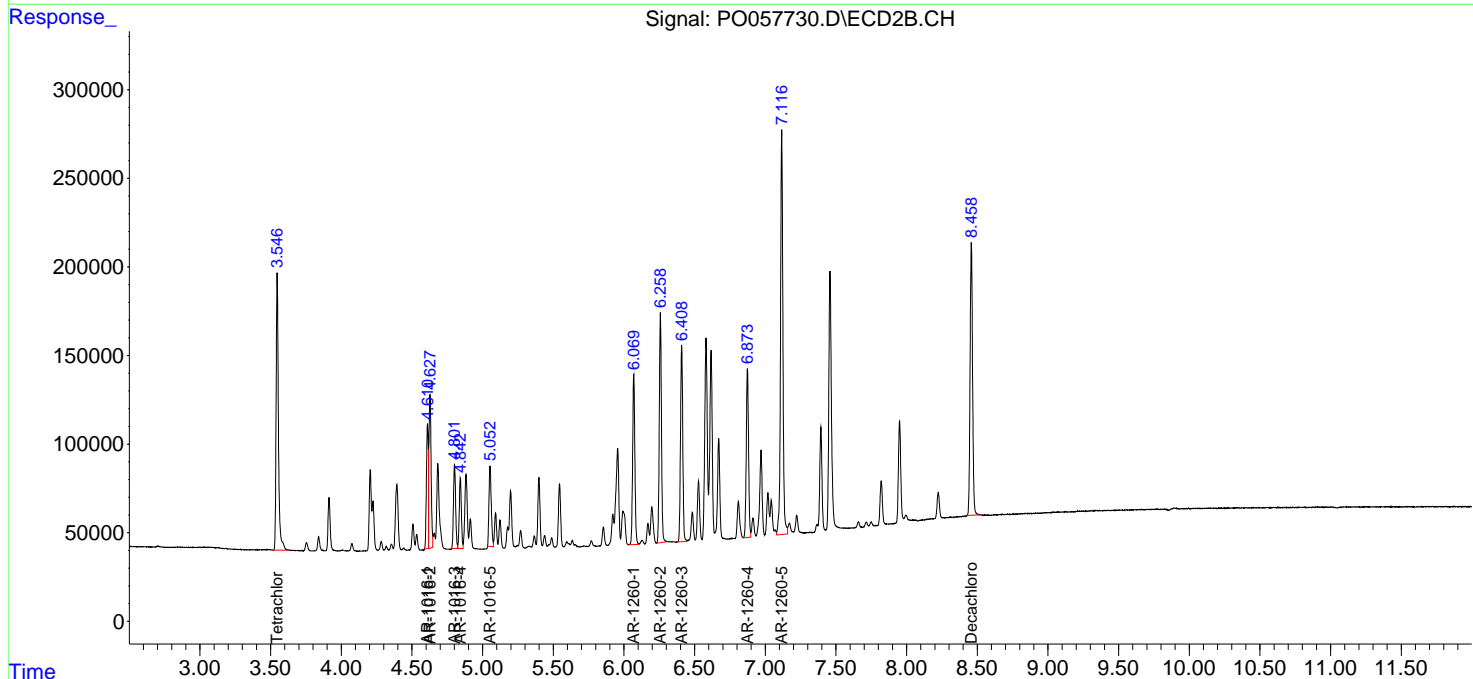
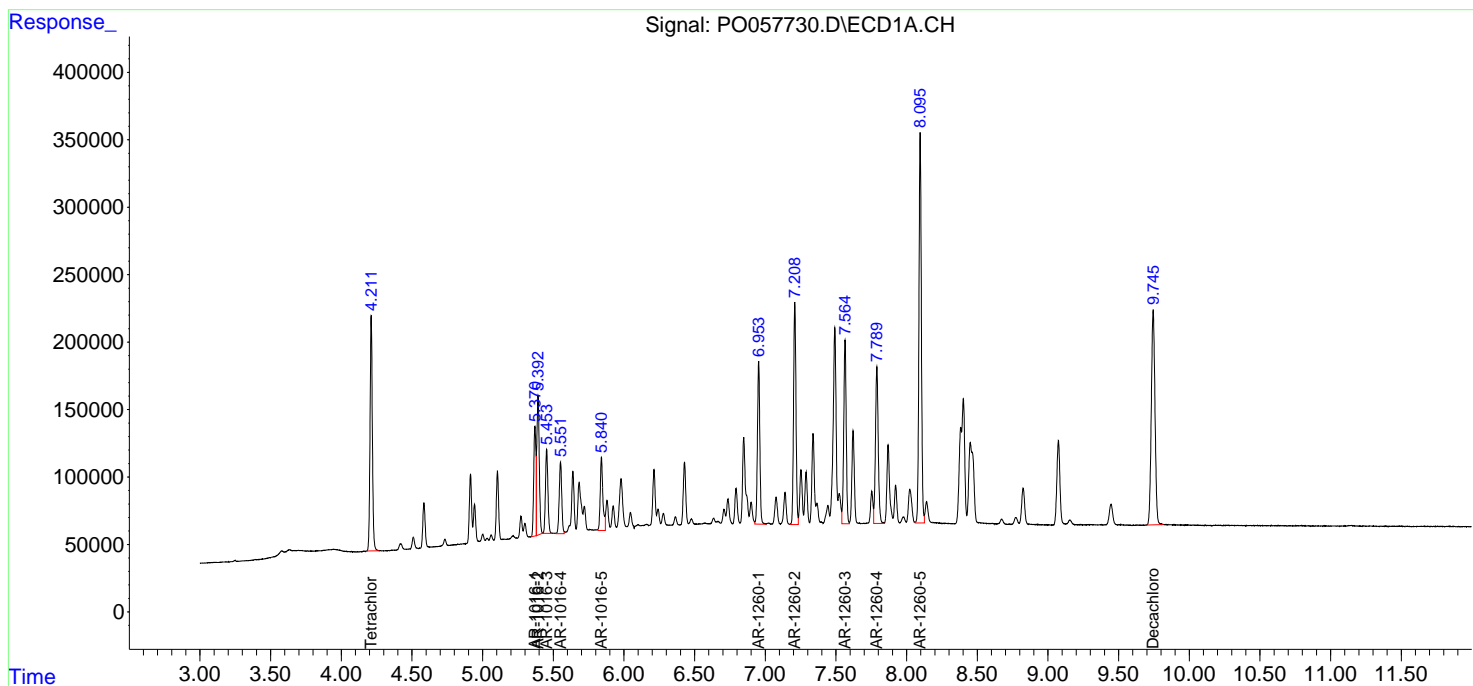
Data Path : Z:\pestpcbsrv\HPCHEM1\ECD_O\Data\PO070819\
 Data File : PO057730.D
 Signal(s) : Signal #1: ECD1A.CH Signal #2: ECD2B.CH
 Acq On : 08 Jul 2019 11:06
 Operator : SM/SJ
 Sample : AR1660CCC500
 Misc :
 ALS Vial : 3 Sample Multiplier: 1

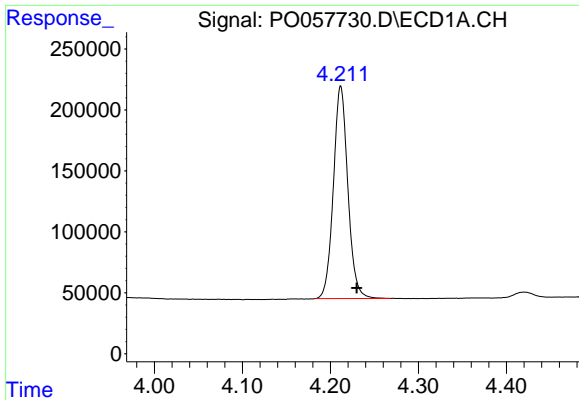
Instrument :
 ECD_O
Client Sampled :
 AR1660CCC500

Manual Integrations
APPROVED
 Ankita
 7/9/2019 9:35:48 AM

Integration File signal 1: autoint1.e
 Integration File signal 2: autoint2.e
 Quant Time: Jul 08 12:57:08 2019
 Quant Method : Z:\pestpcbsrv\HPCHEM1\ECD_O\methods\PO062419.M
 Quant Title : GC EXTRACTABLES
 QLast Update : Mon Jun 24 14:02:43 2019
 Response via : Initial Calibration
 Integrator: ChemStation 6890 Scale Mode: Small noise peaks clipped

Volume Inj. : 2 µl
 Signal #1 Phase : ZB-MR1 Signal #2 Phase: ZB-MR2
 Signal #1 Info : 30Mx0.32mmx 0.50µ Signal #2 Info : 30M x 0.32mm x 0.25µm

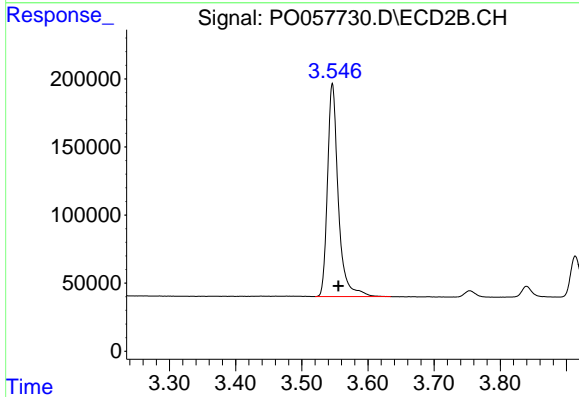




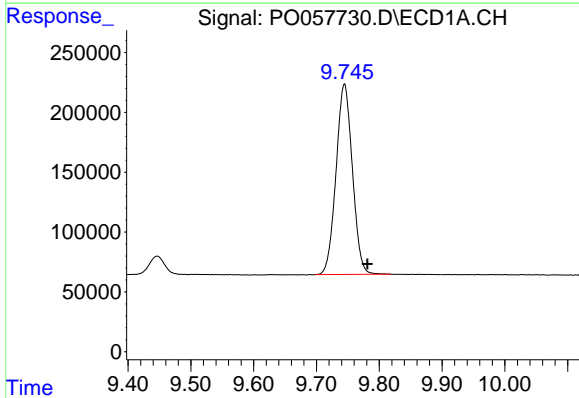
#1 Tetrachloro-m-xylene
 R.T.: 4.212 min
 Delta R.T.: -0.018 min
 Response: 1996100
 Conc: 50.82 ng/ml

Instrument :
 ECD_O
 ClientSampleId :
 AR1660CCC500

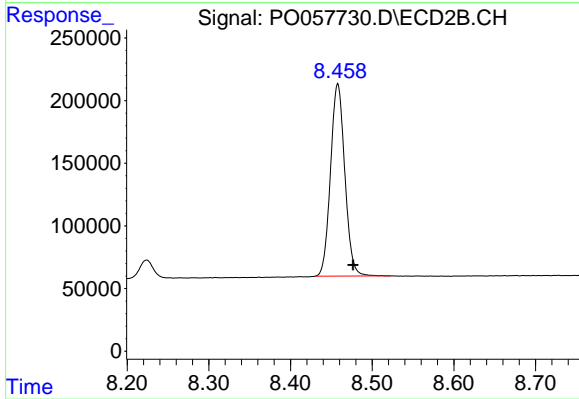
Manual Integrations
 APPROVED
 Ankita
 7/9/2019 9:35:48 AM



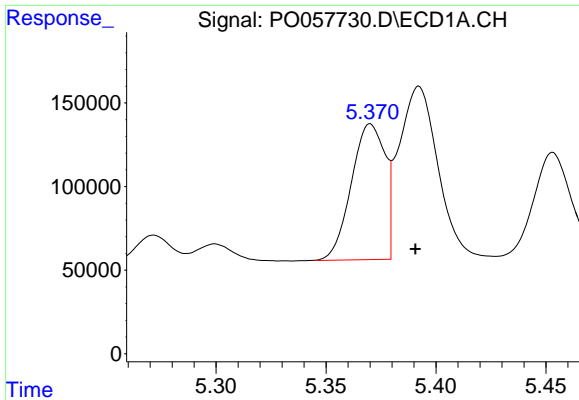
#1 Tetrachloro-m-xylene
 R.T.: 3.546 min
 Delta R.T.: -0.009 min
 Response: 1775847
 Conc: 50.50 ng/ml



#2 Decachlorobiphenyl
 R.T.: 9.745 min
 Delta R.T.: -0.037 min
 Response: 2880135
 Conc: 51.22 ng/ml m



#2 Decachlorobiphenyl
 R.T.: 8.458 min
 Delta R.T.: -0.019 min
 Response: 1869832
 Conc: 49.99 ng/ml

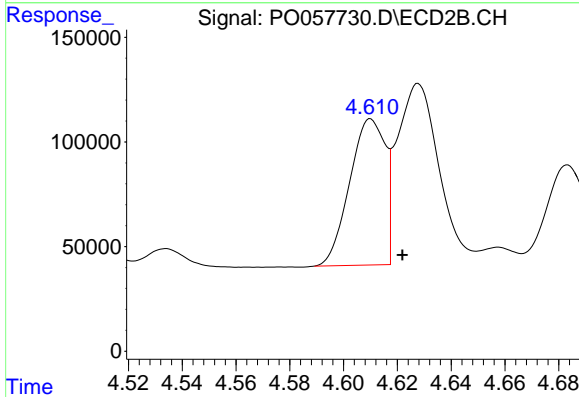


#3 AR-1016-1

R.T.: 5.370 min
 Delta R.T.: -0.021 min
 Response: 893665
 Conc: 505.62 ng/ml m

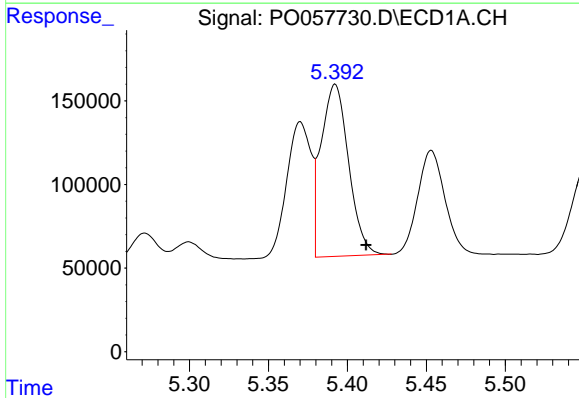
Instrument :
 ECD_O
ClientSampled :
 AR1660CCC500

Manual Integrations
APPROVED
 Ankita
 7/9/2019 9:35:48 AM



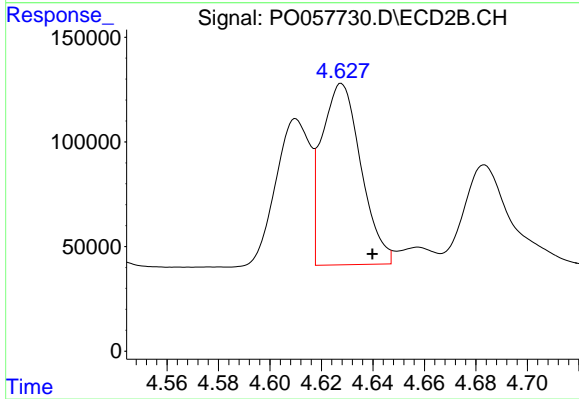
#3 AR-1016-1

R.T.: 4.610 min
 Delta R.T.: -0.012 min
 Response: 637765
 Conc: 477.02 ng/ml m



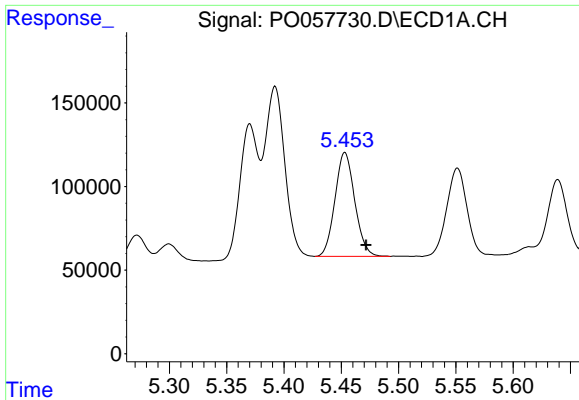
#4 AR-1016-2

R.T.: 5.392 min
 Delta R.T.: -0.020 min
 Response: 1228644
 Conc: 476.78 ng/ml m



#4 AR-1016-2

R.T.: 4.627 min
 Delta R.T.: -0.012 min
 Response: 904043
 Conc: 464.35 ng/ml m



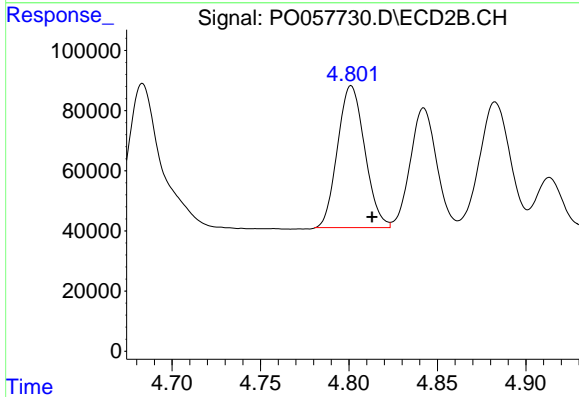
#5 AR-1016-3

R.T.: 5.453 min
 Delta R.T.: -0.019 min
 Response: 745872
 Conc: 478.47 ng/ml

Instrument :
 ECD_O
 ClientSampleId :
 AR1660CCC500

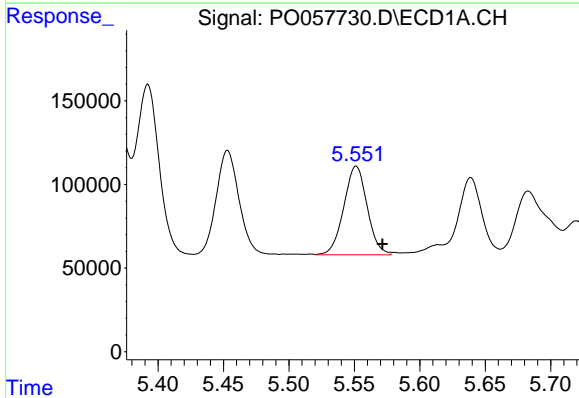
Manual Integrations
 APPROVED

Ankita
 7/9/2019 9:35:48 AM



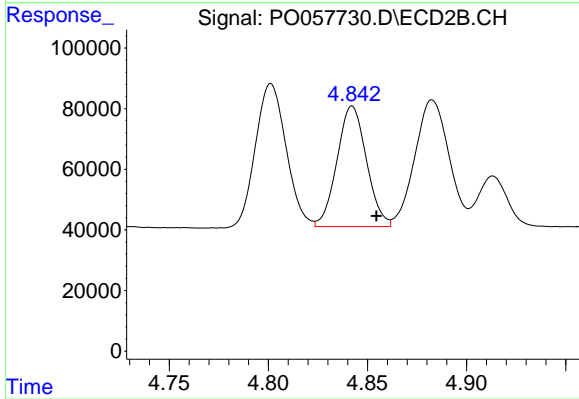
#5 AR-1016-3

R.T.: 4.801 min
 Delta R.T.: -0.012 min
 Response: 504989
 Conc: 476.97 ng/ml m



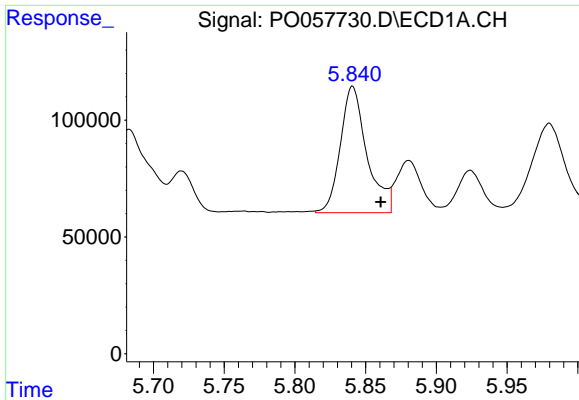
#6 AR-1016-4

R.T.: 5.551 min
 Delta R.T.: -0.020 min
 Response: 659515
 Conc: 508.58 ng/ml m



#6 AR-1016-4

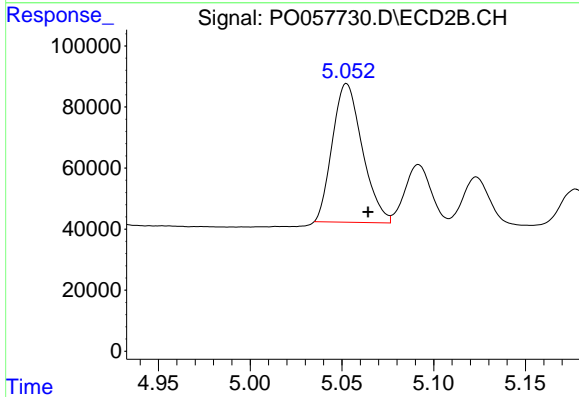
R.T.: 4.842 min
 Delta R.T.: -0.013 min
 Response: 411157
 Conc: 462.13 ng/ml m



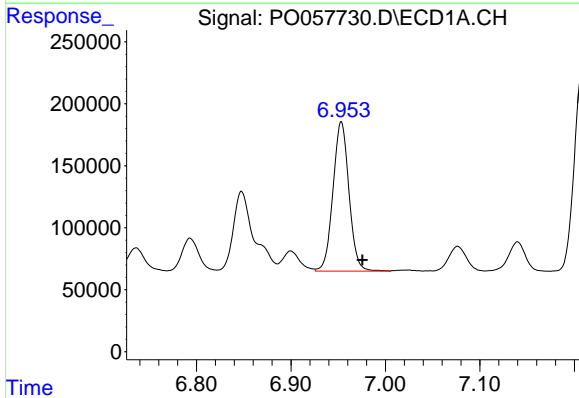
#7 AR-1016-5
 R.T.: 5.840 min
 Delta R.T.: -0.020 min
 Response: 709145
 Conc: 518.82 ng/ml m

Instrument :
 ECD_O
ClientSampled :
 AR1660CCC500

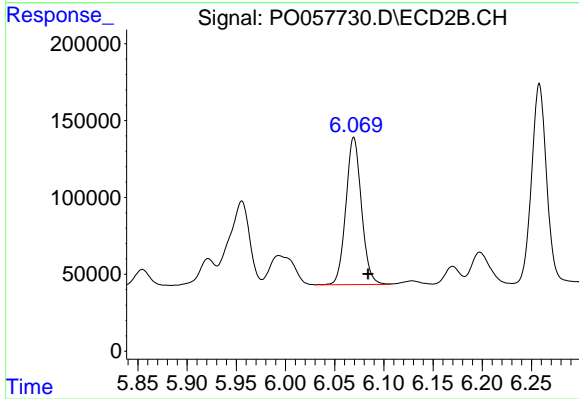
Manual Integrations
APPROVED
 Ankita
 7/9/2019 9:35:48 AM



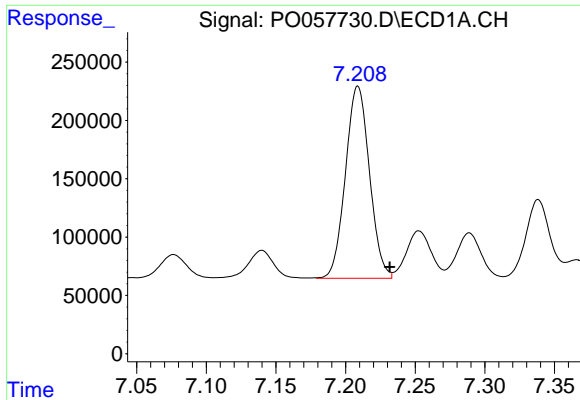
#7 AR-1016-5
 R.T.: 5.053 min
 Delta R.T.: -0.012 min
 Response: 516256
 Conc: 451.90 ng/ml



#31 AR-1260-1
 R.T.: 6.953 min
 Delta R.T.: -0.022 min
 Response: 1414759
 Conc: 510.49 ng/ml



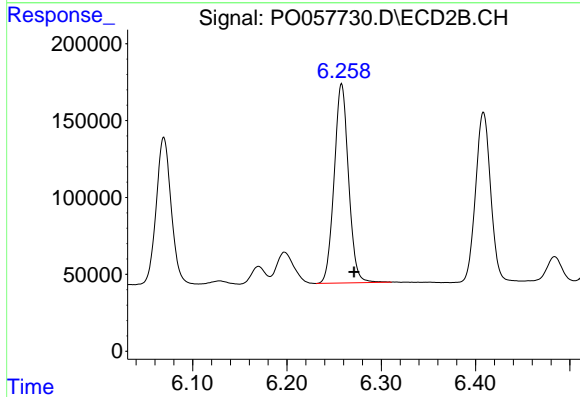
#31 AR-1260-1
 R.T.: 6.069 min
 Delta R.T.: -0.014 min
 Response: 1054353
 Conc: 492.62 ng/ml



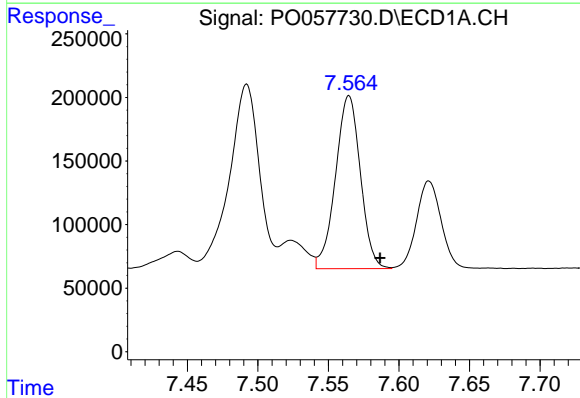
#32 AR-1260-2
 R.T.: 7.208 min
 Delta R.T.: -0.023 min
 Response: 1975415
 Conc: 535.84 ng/ml m

Instrument :
 ECD_O
ClientSampled :
 AR1660CCC500

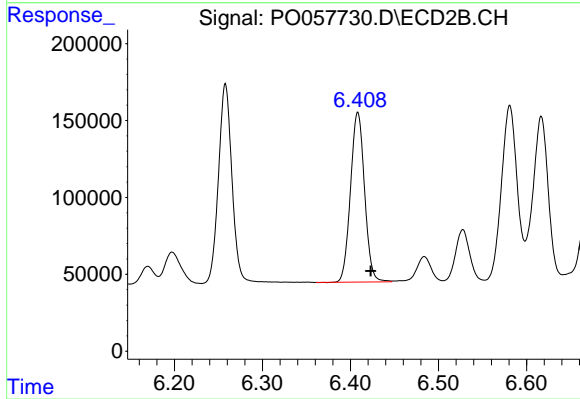
Manual Integrations
APPROVED
 Ankita
 7/9/2019 9:35:48 AM



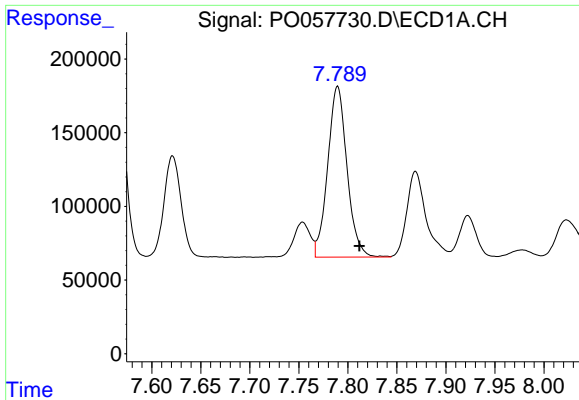
#32 AR-1260-2
 R.T.: 6.258 min
 Delta R.T.: -0.013 min
 Response: 1369529
 Conc: 499.17 ng/ml



#33 AR-1260-3
 R.T.: 7.565 min
 Delta R.T.: -0.022 min
 Response: 1668765
 Conc: 549.27 ng/ml



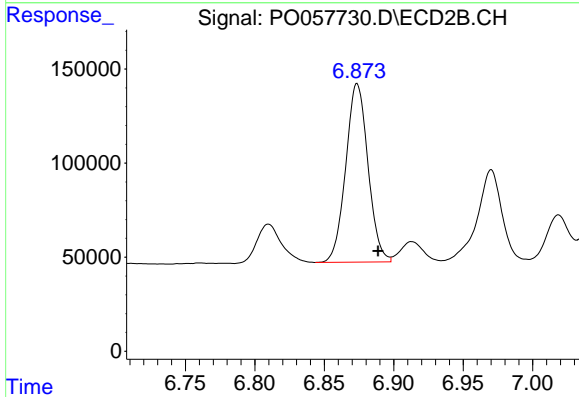
#33 AR-1260-3
 R.T.: 6.408 min
 Delta R.T.: -0.015 min
 Response: 1223000
 Conc: 500.92 ng/ml



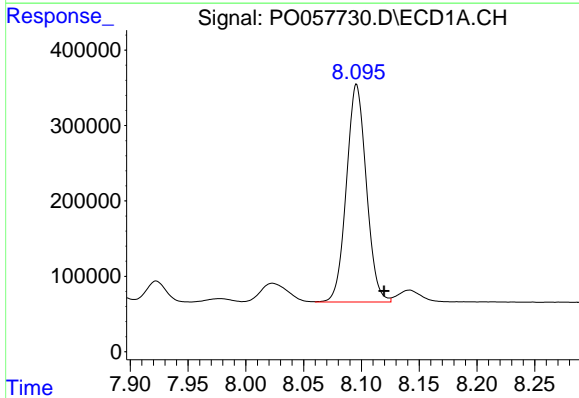
#34 AR-1260-4
 R.T.: 7.790 min
 Delta R.T.: -0.022 min
 Response: 1588242
 Conc: 523.70 ng/ml

Instrument :
 ECD_O
ClientSampled :
 AR1660CCC500

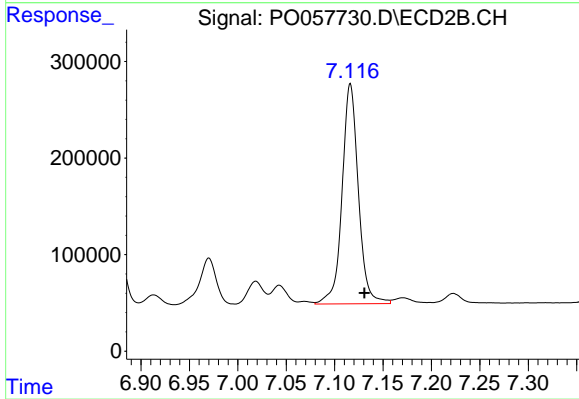
Manual Integrations
APPROVED
 Ankita
 7/9/2019 9:35:48 AM



#34 AR-1260-4
 R.T.: 6.874 min
 Delta R.T.: -0.015 min
 Response: 1059818
 Conc: 509.03 ng/ml



#35 AR-1260-5
 R.T.: 8.095 min
 Delta R.T.: -0.024 min
 Response: 3455967
 Conc: 552.64 ng/ml m



#35 AR-1260-5
 R.T.: 7.116 min
 Delta R.T.: -0.015 min
 Response: 2675410
 Conc: 527.47 ng/ml