

Data Path : Z:\pestpcbsrv\HPCHEM1\ECD_O\Data\PO070918\
 Data File : PO046505.D
 Signal(s) : Signal #1: ECD1A.CH Signal #2: ECD2B.CH
 Acq On : 09 Jul 2018 22:45
 Operator : SM/UA
 Sample : J3917-01 10X
 Misc :
 ALS Vial : 38 Sample Multiplier: 1

Instrument :
 ECD_O
 ClientSampleId :
 I.BLK

Integration File signal 1: autoint1.e
 Integration File signal 2: autoint2.e
 Quant Time: Jul 10 05:33:52 2018
 Quant Method : Z:\pestpcbsrv\HPCHEM1\ECD_O\methods\PO070718.M
 Quant Title : GC EXTRACTABLES
 QLast Update : Mon Jul 09 15:27:34 2018
 Response via : Initial Calibration
 Integrator: ChemStation 6890 Scale Mode: Small noise peaks clipped

Volume Inj. : 2 µl
 Signal #1 Phase : ZB-MR1 Signal #2 Phase: ZB-MR2
 Signal #1 Info : 30Mx0.32mmx 0.50µ Signal #2 Info : 30M x 0.32mm x 0.25µm

Compound	RT#1	RT#2	Resp#1	Resp#2	ng/ml	ng/ml

System Monitoring Compounds						
1) SA Tetrachlo...	4.202	3.532	493976	266062	2.067	1.253 #
2) SA Decachlor...	9.735	8.466	669102	-12669	3.510	N.D. #
Target Compounds						
3) L1 AR-1016-1	5.118	4.386	730026	1582905	129.415	289.951 #
4) L1 AR-1016-2	5.447	4.843	1305904	1607199	182.466	331.459 #
5) L1 AR-1016-3	5.513	4.899	1625659	890057	270.461	152.753 #
6) L1 AR-1016-4	5.832	5.072	1322609	2495949	226.772	392.902 #
7) L1 AR-1016-5	5.985	5.188	1288354	1046147	198.083	189.837
8) L2 AR-1221-1	4.461	3.767	330984	1847172	103.999	690.744 #
9) L2 AR-1221-2	4.480	3.801	370185	401444	156.504	186.201
10) L2 AR-1221-3	4.567	3.963	435955	439971	57.676	64.220
11) L3 AR-1232-1	4.886	4.215	899215	1918778	367.897	826.618 #
12) L3 AR-1232-2	5.333	4.607	2081358	2577651	587.935	748.271 #
13) L3 AR-1232-3	5.403	4.607	1734556	2577651	341.736	540.309 #
14) L3 AR-1232-4	5.447	4.748	1305904	1927265	400.755	548.398 #
15) L3 AR-1232-5	5.513	4.796	1625659	195100	612.240	70.043 #
16) L4 AR-1242-1	5.403	4.607	1734556	2577651	170.587	269.072 #
17) L4 AR-1242-2	5.447	4.796	1305904	195100	201.724	35.151 #
18) L4 AR-1242-3	5.513	4.899	1625659	890057	298.391	171.408 #
19) L4 AR-1242-4	5.832	5.072	1322609	2495949	247.578	439.823 #
20) L4 AR-1242-5	5.985	5.188	1288354	1046147	213.580	201.950
21) L5 AR-1248-1	5.832	5.072	1322609	2495949	166.703	295.161 #
22) L5 AR-1248-2	5.985	5.188	1288354	1046147	181.946	163.900
23) L5 AR-1248-3	6.222	5.407	934514	844912	101.996	68.662 #
24) L5 AR-1248-4	6.274	5.434	1357668	1276975	153.055	146.696
25) L5 AR-1248-5	6.448	5.972	2609587	1980227	286.743	338.235
26) L6 AR-1254-1	6.448	5.407	2609587	844912	187.151	63.190 #
27) L6 AR-1254-2	6.682	5.543	1607165	987852	182.459	85.460 #
28) L6 AR-1254-3	6.781	5.972	1741507	1980227	113.904	100.616
29) L6 AR-1254-4	7.042	6.181	1149172	1295736	100.116	102.761
30) L6 AR-1254-5	7.347	6.486	917129	365363	103.344	40.282 #
31) L7 AR-1260-1	6.970	6.095	1857868	1173628	161.759	89.973 #
32) L7 AR-1260-2	7.197	6.259	4199891	980882	311.113	61.515 #
33) L7 AR-1260-3	7.522	6.595	2322878	563498	143.570	31.422 #
34) L7 AR-1260-4	8.111	7.166	2540136	88090	120.821	3.171 #
35) L7 AR-1260-5	8.431	7.474	2645736	859387	196.172	44.732 #
36) L8 AR-1262-1	6.970	6.259	1857868	980882	195.032	74.892 #
37) L8 AR-1262-2	7.197	6.461	4199891	597789	377.095	46.147 #
38) L8 AR-1262-3	7.599	6.652	2177981	676513	152.105	38.632 #

Data Path : Z:\pestpcbsrv\HPCHEM1\ECD_O\Data\PO070918\
 Data File : PO046505.D
 Signal(s) : Signal #1: ECD1A.CH Signal #2: ECD2B.CH
 Acq On : 09 Jul 2018 22:45
 Operator : SM/UA
 Sample : J3917-01 10X
 Misc :
 ALS Vial : 38 Sample Multiplier: 1

Instrument :
 ECD_O
 ClientSampleId :
 I.BLK

Integration File signal 1: autoint1.e
 Integration File signal 2: autoint2.e
 Quant Time: Jul 10 05:33:52 2018
 Quant Method : Z:\pestpcbsrv\HPCHEM1\ECD_O\methods\PO070718.M
 Quant Title : GC EXTRACTABLES
 QLast Update : Mon Jul 09 15:27:34 2018
 Response via : Initial Calibration
 Integrator: ChemStation 6890 Scale Mode: Small noise peaks clipped

Volume Inj. : 2 µl
 Signal #1 Phase : ZB-MR1 Signal #2 Phase: ZB-MR2
 Signal #1 Info : 30Mx0.32mmx 0.50µ Signal #2 Info : 30M x 0.32mm x 0.25µm

Compound	RT#1	RT#2	Resp#1	Resp#2	ng/ml	ng/ml
39) L8 AR-1262-4	7.772	6.860	3282250	463524	244.124	30.321 #
40) L8 AR-1262-5	8.111	7.079	2540136	2086040	104.946	67.578 #
41) L9 AR-1268-1	8.339	7.401	1597754	137665	65.547	4.919 #
42) L9 AR-1268-2	8.466	7.474	837557	859387	36.967	31.195
43) L9 AR-1268-3	8.663	7.688	1356139	1013381	71.809	45.394 #
44) L9 AR-1268-4	9.073	7.944	906289	525990	106.859	55.265 #
45) L9 AR-1268-5	0.000	8.248	0	197622	N.D.	3.130 #

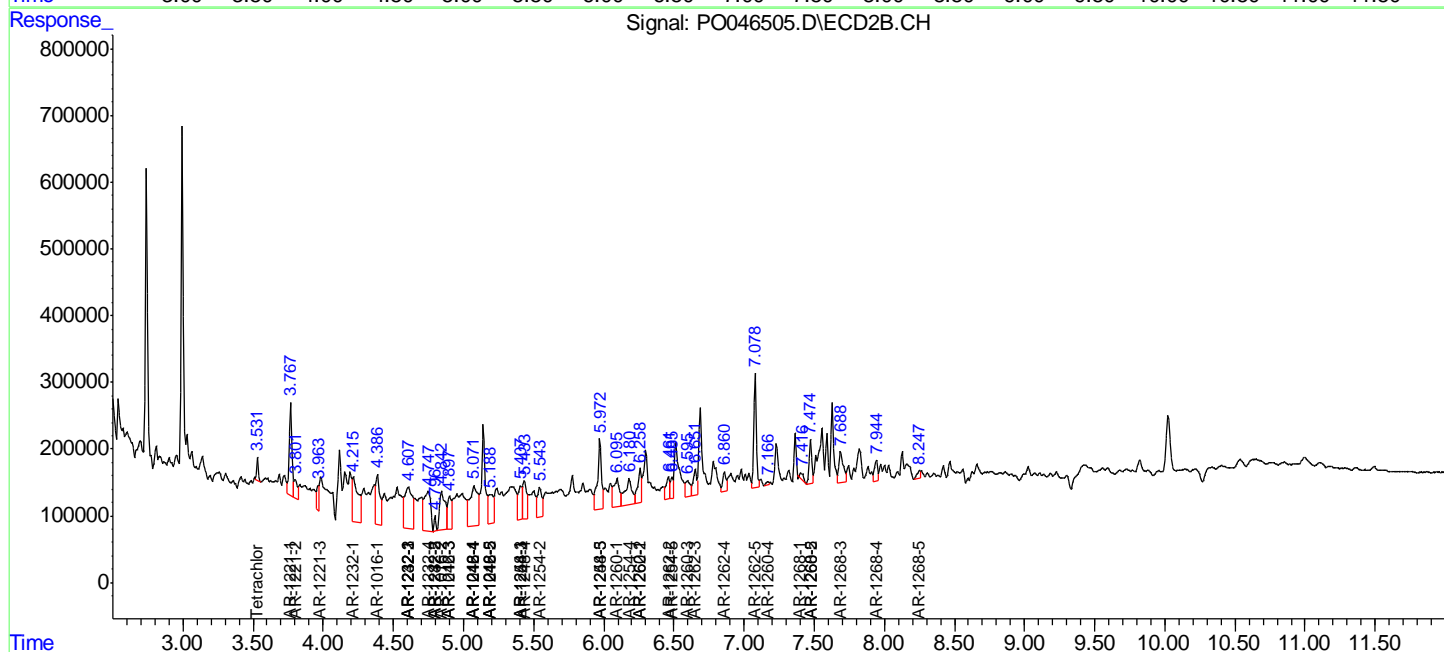
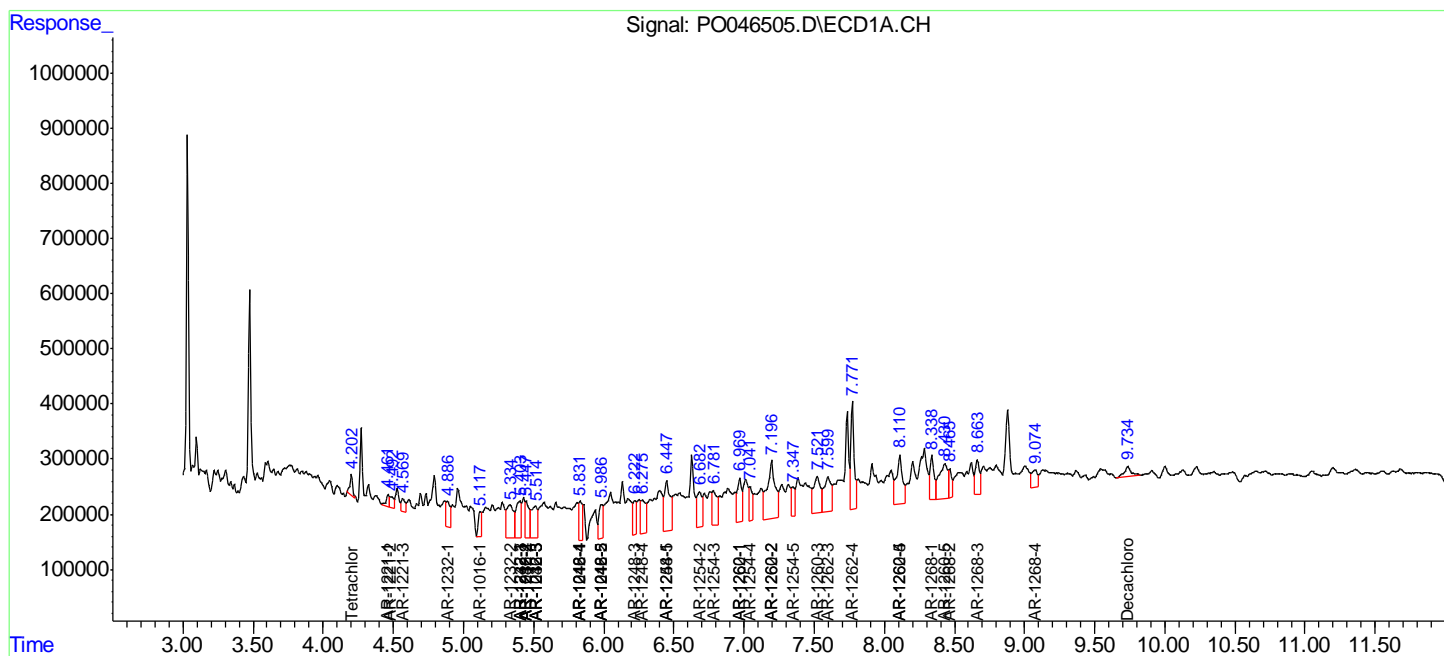
(f)=RT Delta > 1/2 Window (#)=Amounts differ by > 25% (m)=manual int.

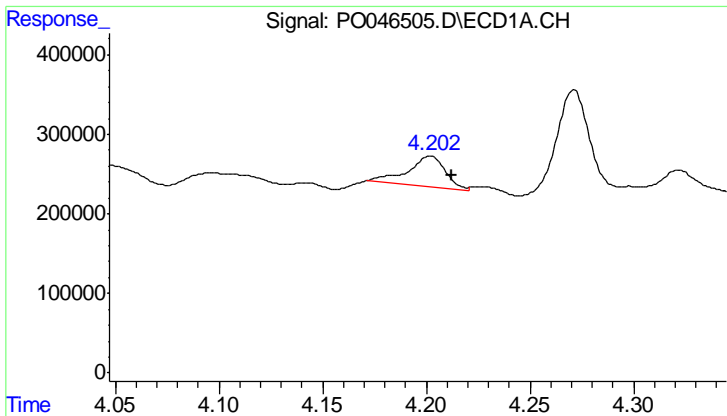
Data Path : Z:\pestpcbsrv\HPCHEM1\ECD_O\Data\PO070918\
 Data File : PO046505.D
 Signal(s) : Signal #1: ECD1A.CH Signal #2: ECD2B.CH
 Acq On : 09 Jul 2018 22:45
 Operator : SM/UA
 Sample : J3917-01 10X
 Misc :
 ALS Vial : 38 Sample Multiplier: 1

Instrument :
 ECD_O
 ClientSampled :
 I.BLK

Integration File signal 1: autoint1.e
 Integration File signal 2: autoint2.e
 Quant Time: Jul 10 05:33:52 2018
 Quant Method : Z:\pestpcbsrv\HPCHEM1\ECD_O\methods\PO070718.M
 Quant Title : GC EXTRACTABLES
 QLast Update : Mon Jul 09 15:27:34 2018
 Response via : Initial Calibration
 Integrator: ChemStation 6890 Scale Mode: Small noise peaks clipped

Volume Inj. : 2 µl
 Signal #1 Phase : ZB-MR1 Signal #2 Phase: ZB-MR2
 Signal #1 Info : 30Mx0.32mmx 0.50µ Signal #2 Info : 30M x 0.32mm x 0.25µm

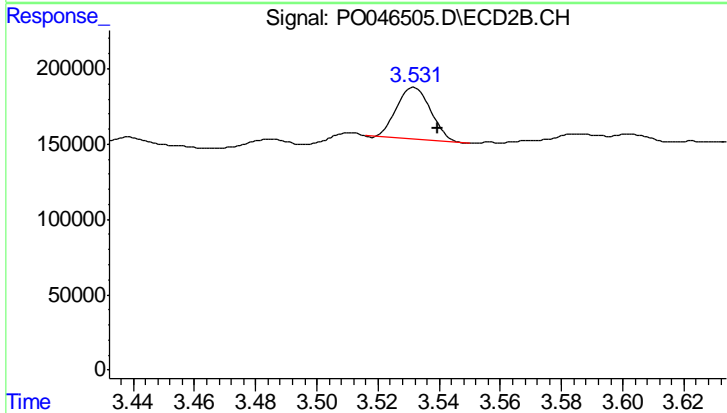




#1 Tetrachloro-m-xylene

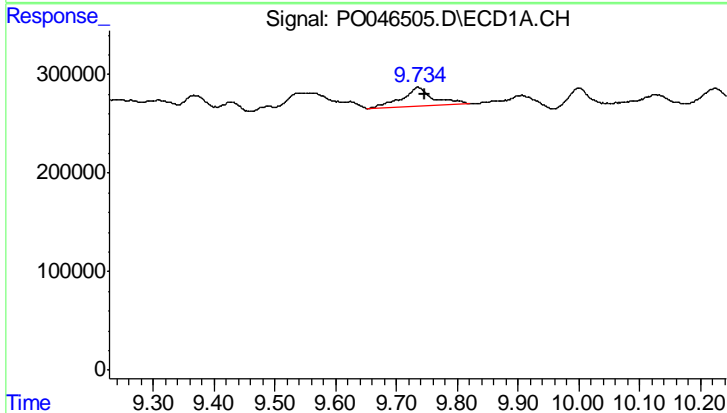
R.T.: 4.202 min
 Delta R.T.: -0.010 min
 Response: 493976
 Conc: 2.07 ng/ml

Instrument :
 ECD_O
 ClientSampled :
 I.BLK



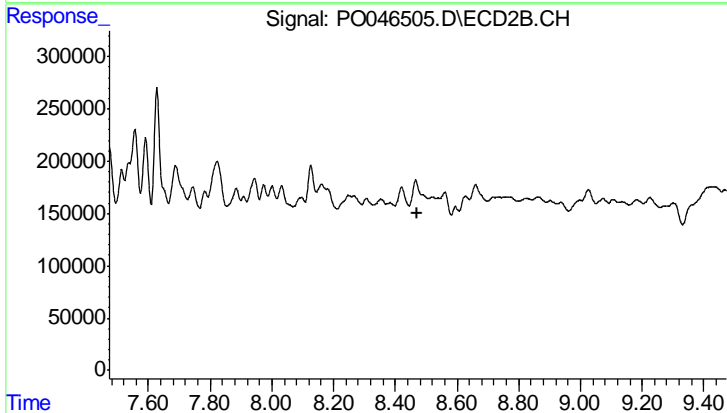
#1 Tetrachloro-m-xylene

R.T.: 3.532 min
 Delta R.T.: -0.008 min
 Response: 266062
 Conc: 1.25 ng/ml



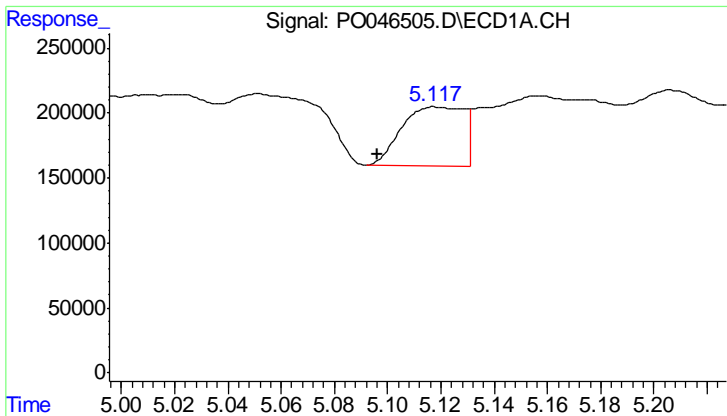
#2 Decachlorobiphenyl

R.T.: 9.735 min
 Delta R.T.: -0.013 min
 Response: 669102
 Conc: 3.51 ng/ml



#2 Decachlorobiphenyl

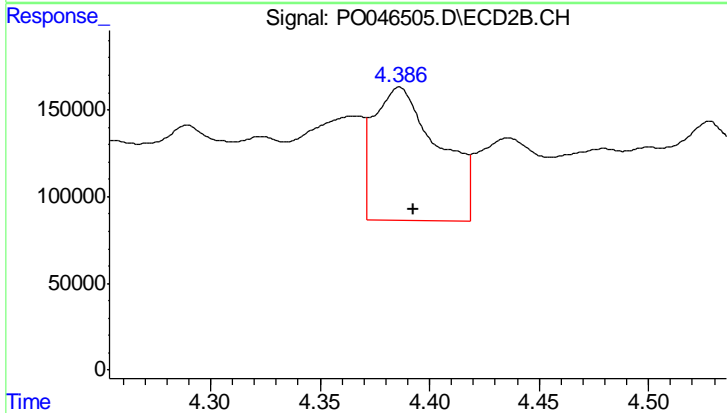
R.T.: 8.466 min
 Delta R.T.: -0.007 min
 Response: -12669
 Conc: N.D.



#3 AR-1016-1

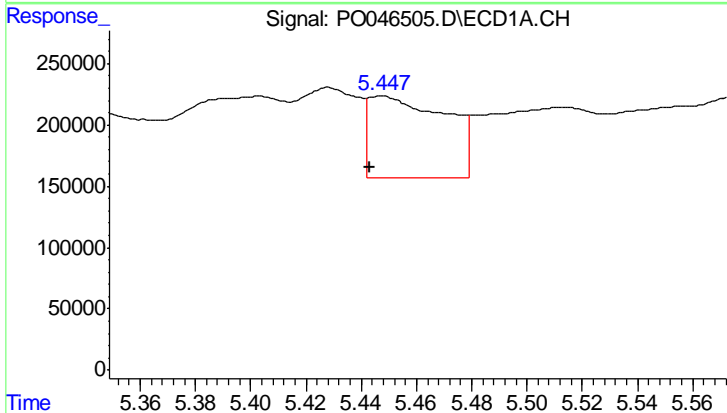
R.T.: 5.118 min
 Delta R.T.: 0.021 min
 Response: 730026
 Conc: 129.41 ng/ml

Instrument :
 ECD_O
 ClientSampled :
 I.BLK



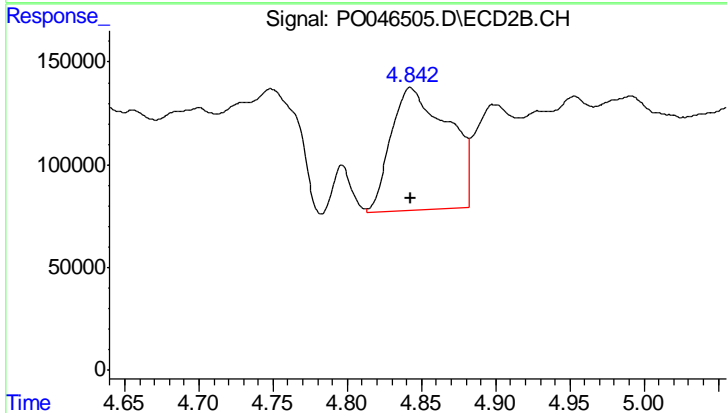
#3 AR-1016-1

R.T.: 4.386 min
 Delta R.T.: -0.006 min
 Response: 1582905
 Conc: 289.95 ng/ml



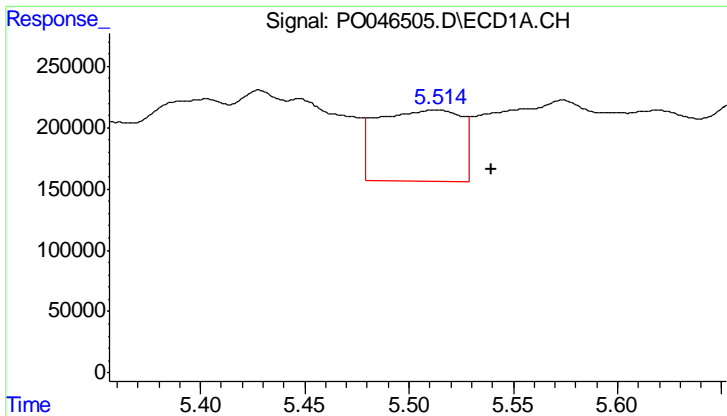
#4 AR-1016-2

R.T.: 5.447 min
 Delta R.T.: 0.004 min
 Response: 1305904
 Conc: 182.47 ng/ml



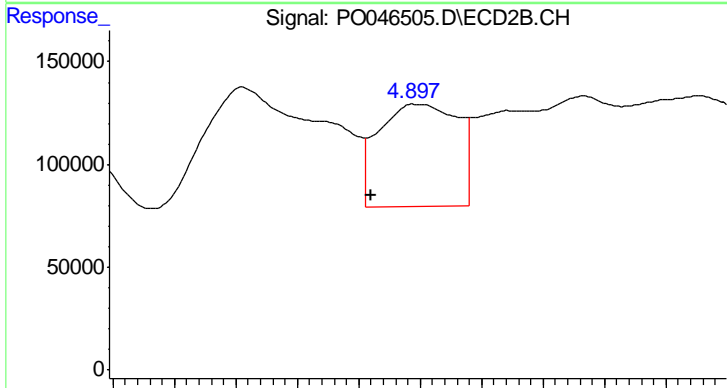
#4 AR-1016-2

R.T.: 4.843 min
 Delta R.T.: 0.000 min
 Response: 1607199
 Conc: 331.46 ng/ml

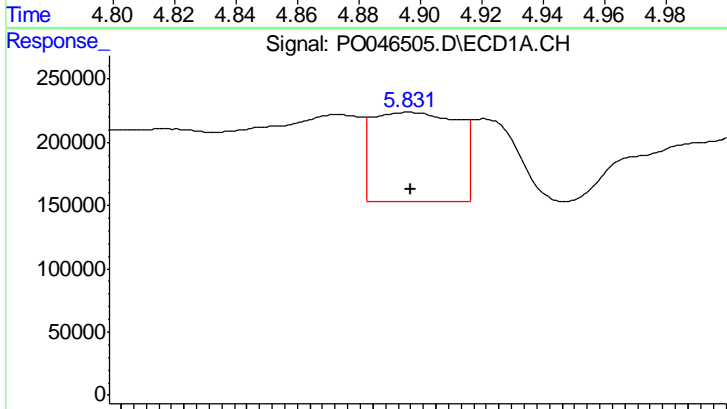


#5 AR-1016-3
 R.T.: 5.513 min
 Delta R.T.: -0.026 min
 Response: 1625659
 Conc: 270.46 ng/ml

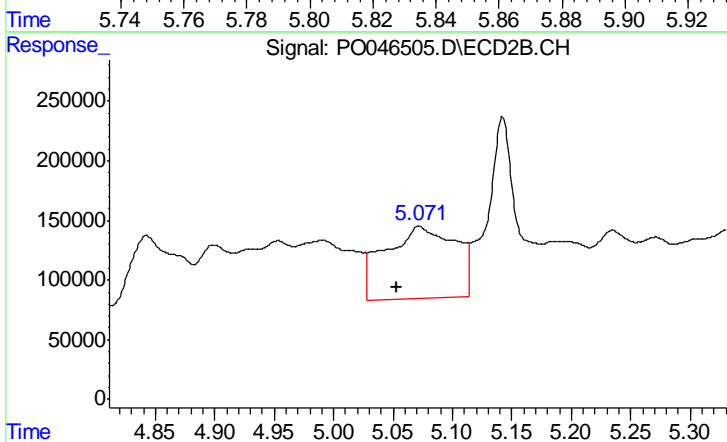
Instrument :
 ECD_O
 ClientSampleId :
 I.BLK



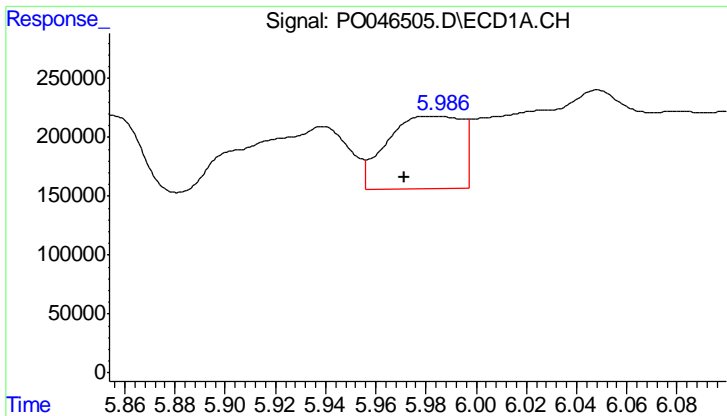
#5 AR-1016-3
 R.T.: 4.899 min
 Delta R.T.: 0.014 min
 Response: 890057
 Conc: 152.75 ng/ml



#6 AR-1016-4
 R.T.: 5.832 min
 Delta R.T.: 0.000 min
 Response: 1322609
 Conc: 226.77 ng/ml



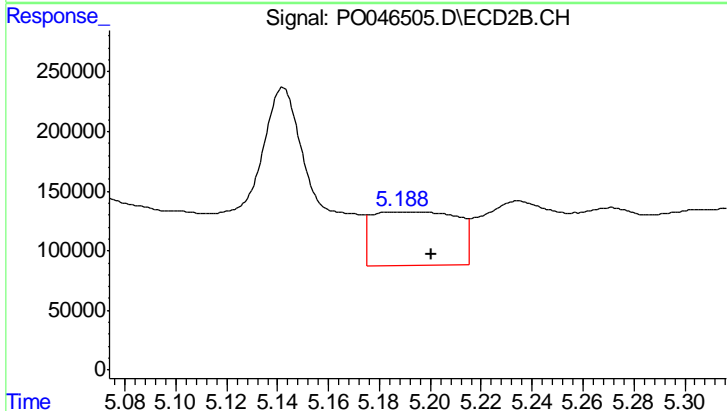
#6 AR-1016-4
 R.T.: 5.072 min
 Delta R.T.: 0.018 min
 Response: 2495949
 Conc: 392.90 ng/ml



#7 AR-1016-5

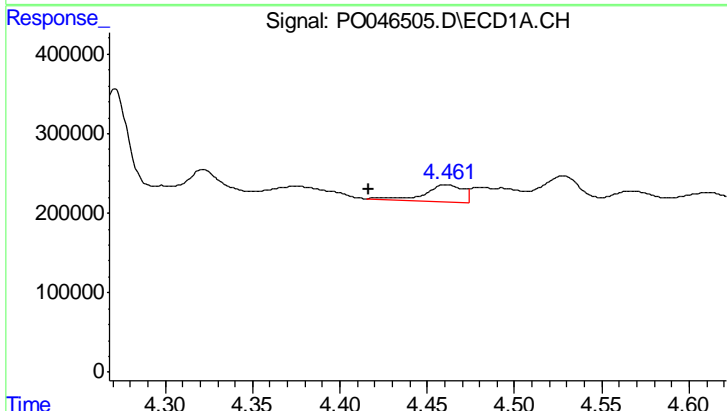
R.T.: 5.985 min
 Delta R.T.: 0.013 min
 Response: 1288354
 Conc: 198.08 ng/ml

Instrument :
 ECD_O
 ClientSampled :
 I.BLK



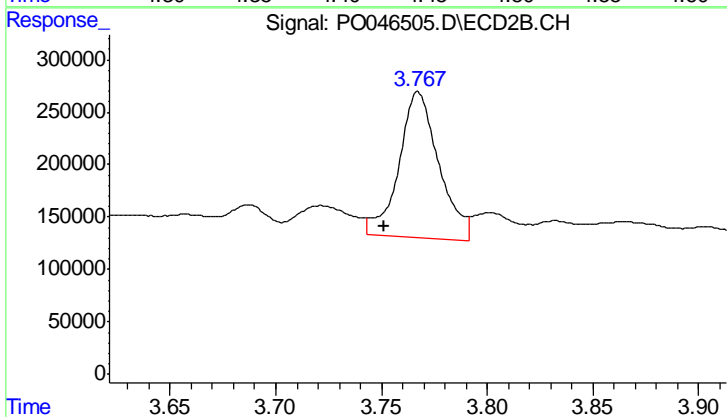
#7 AR-1016-5

R.T.: 5.188 min
 Delta R.T.: -0.013 min
 Response: 1046147
 Conc: 189.84 ng/ml



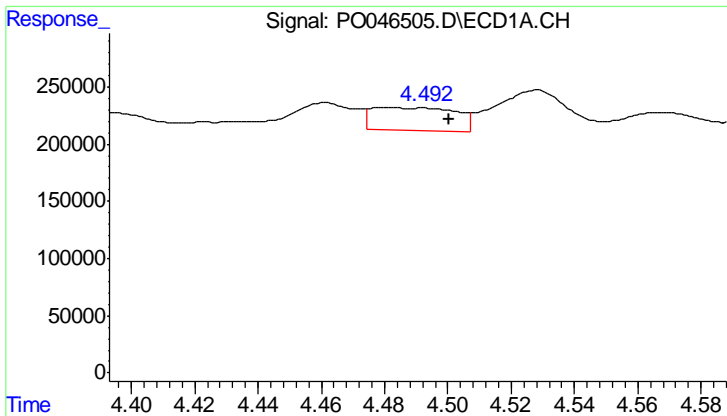
#8 AR-1221-1

R.T.: 4.461 min
 Delta R.T.: 0.045 min
 Response: 330984
 Conc: 104.00 ng/ml



#8 AR-1221-1

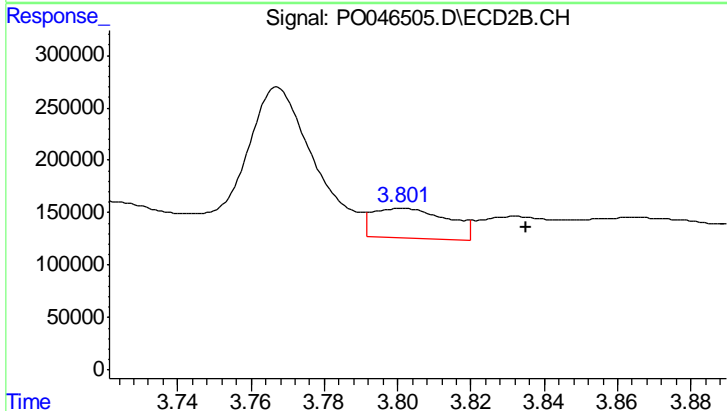
R.T.: 3.767 min
 Delta R.T.: 0.016 min
 Response: 1847172
 Conc: 690.74 ng/ml



#9 AR-1221-2

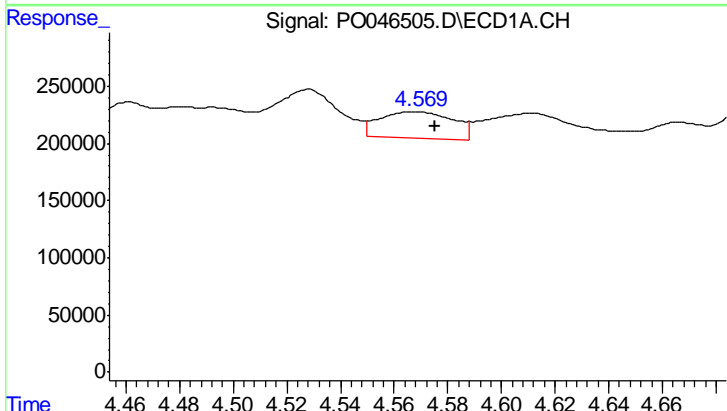
R.T.: 4.480 min
 Delta R.T.: -0.021 min
 Response: 370185
 Conc: 156.50 ng/ml

Instrument :
 ECD_O
 ClientSampled :
 I.BLK



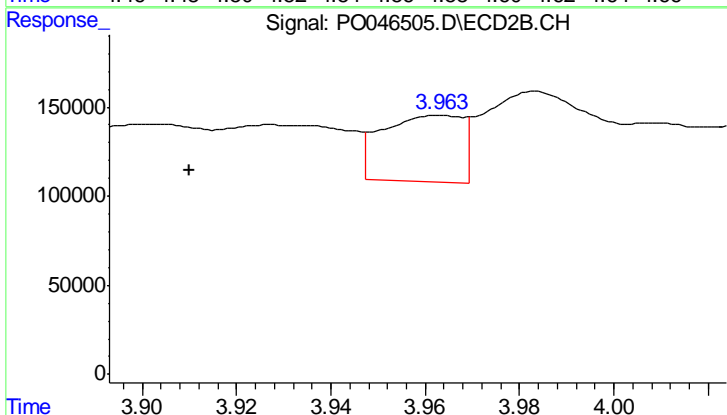
#9 AR-1221-2

R.T.: 3.801 min
 Delta R.T.: -0.034 min
 Response: 401444
 Conc: 186.20 ng/ml



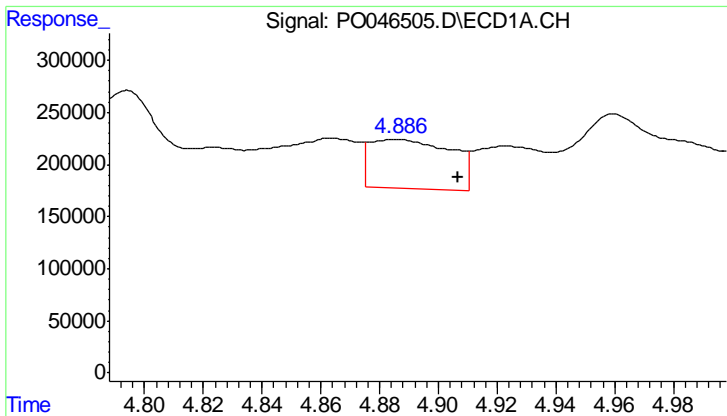
#10 AR-1221-3

R.T.: 4.567 min
 Delta R.T.: -0.008 min
 Response: 435955
 Conc: 57.68 ng/ml



#10 AR-1221-3

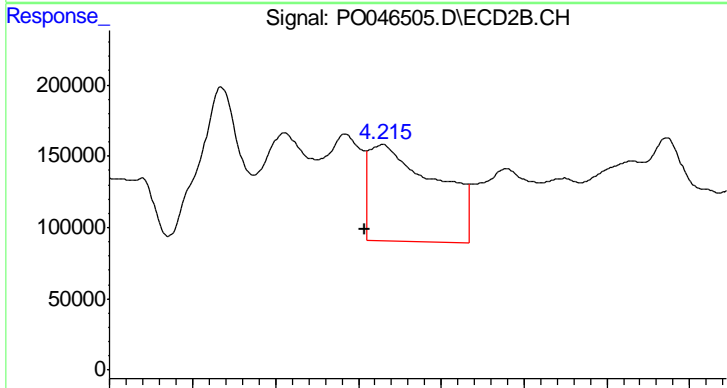
R.T.: 3.963 min
 Delta R.T.: 0.053 min
 Response: 439971
 Conc: 64.22 ng/ml



#11 AR-1232-1

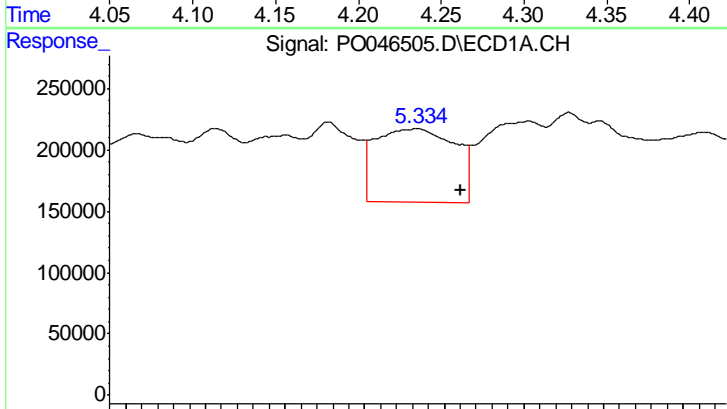
R.T.: 4.886 min
 Delta R.T.: -0.021 min
 Response: 899215
 Conc: 367.90 ng/ml

Instrument :
 ECD_O
 ClientSampled :
 I.BLK



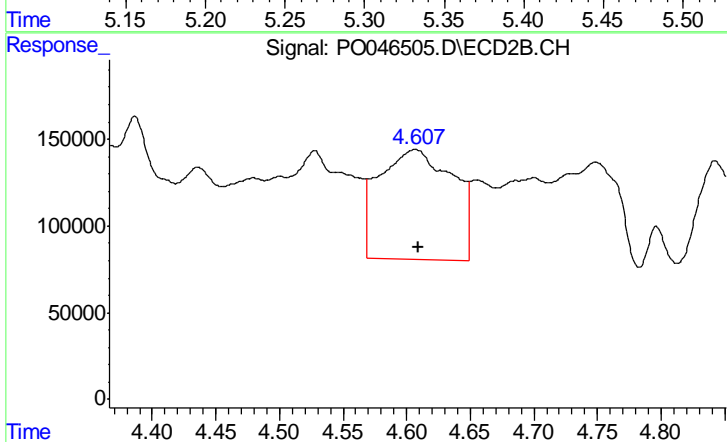
#11 AR-1232-1

R.T.: 4.215 min
 Delta R.T.: 0.011 min
 Response: 1918778
 Conc: 826.62 ng/ml



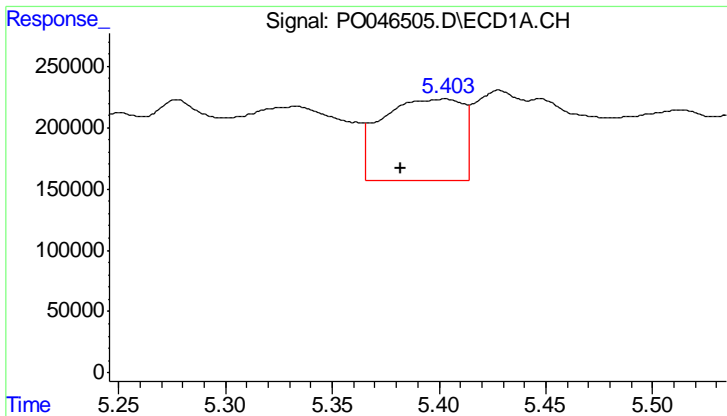
#12 AR-1232-2

R.T.: 5.333 min
 Delta R.T.: -0.027 min
 Response: 2081358
 Conc: 587.94 ng/ml



#12 AR-1232-2

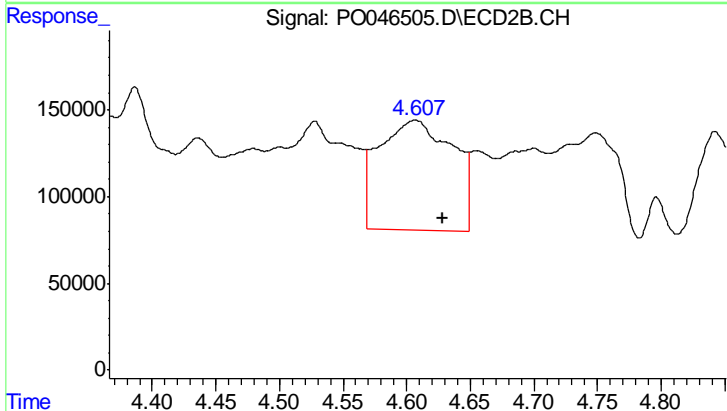
R.T.: 4.607 min
 Delta R.T.: -0.003 min
 Response: 2577651
 Conc: 748.27 ng/ml



#13 AR-1232-3

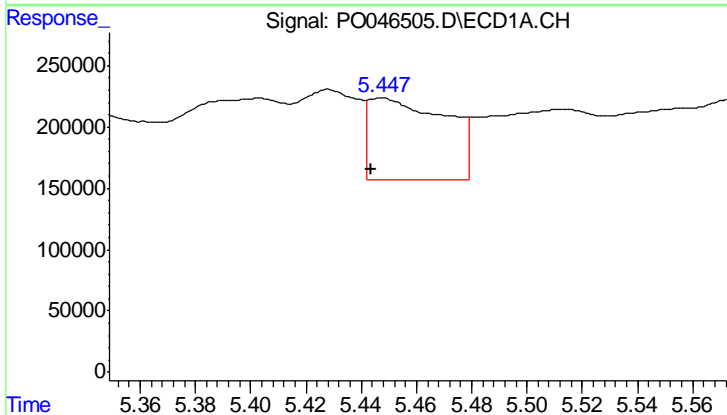
R.T.: 5.403 min
 Delta R.T.: 0.021 min
 Response: 1734556
 Conc: 341.74 ng/ml

Instrument :
 ECD_O
 ClientSampled :
 I.BLK



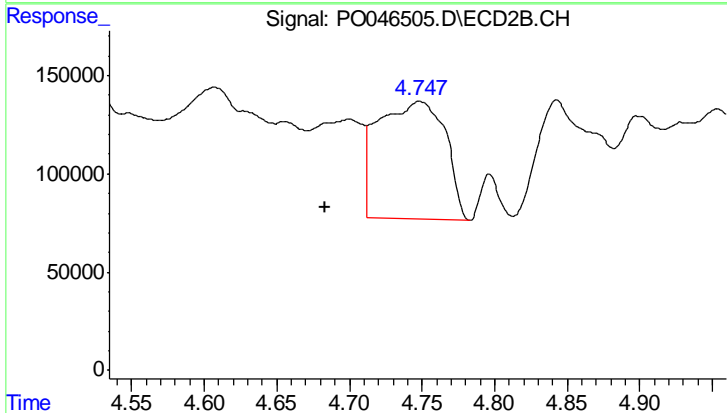
#13 AR-1232-3

R.T.: 4.607 min
 Delta R.T.: -0.021 min
 Response: 2577651
 Conc: 540.31 ng/ml



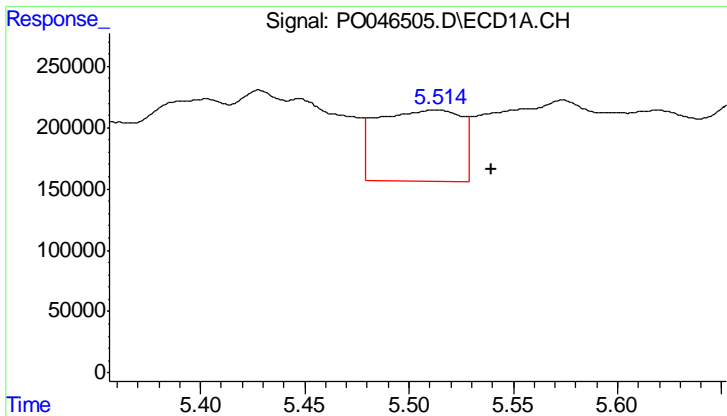
#14 AR-1232-4

R.T.: 5.447 min
 Delta R.T.: 0.004 min
 Response: 1305904
 Conc: 400.75 ng/ml



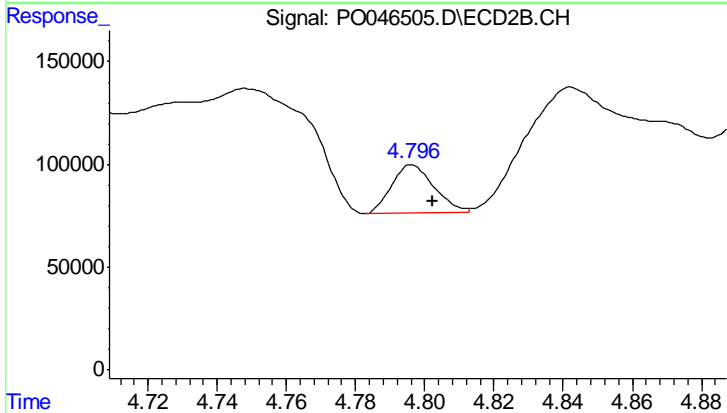
#14 AR-1232-4

R.T.: 4.748 min
 Delta R.T.: 0.065 min
 Response: 1927265
 Conc: 548.40 ng/ml

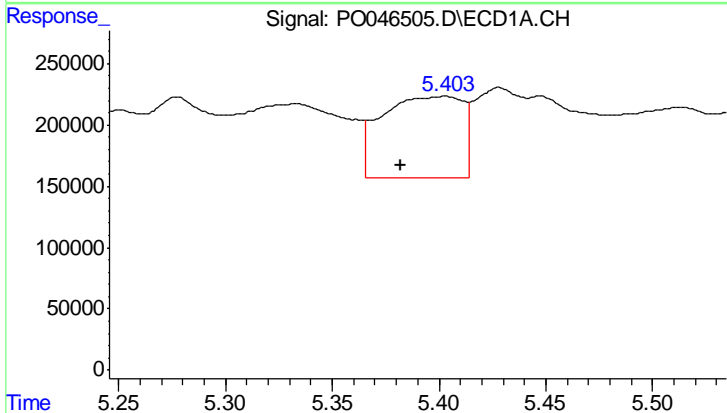


#15 AR-1232-5
 R.T.: 5.513 min
 Delta R.T.: -0.026 min
 Response: 1625659
 Conc: 612.24 ng/ml

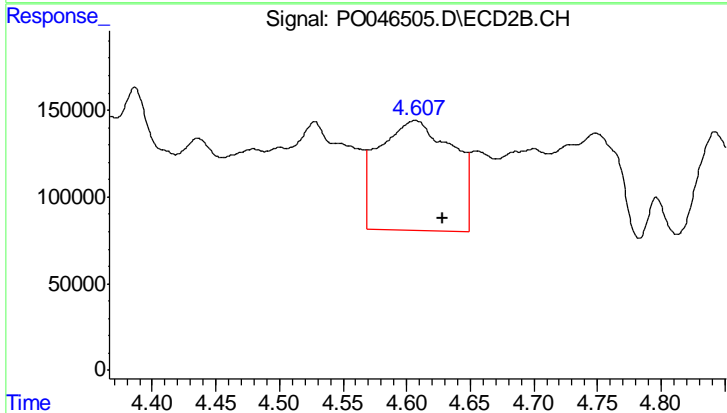
Instrument :
 ECD_O
 ClientSampled :
 I.BLK



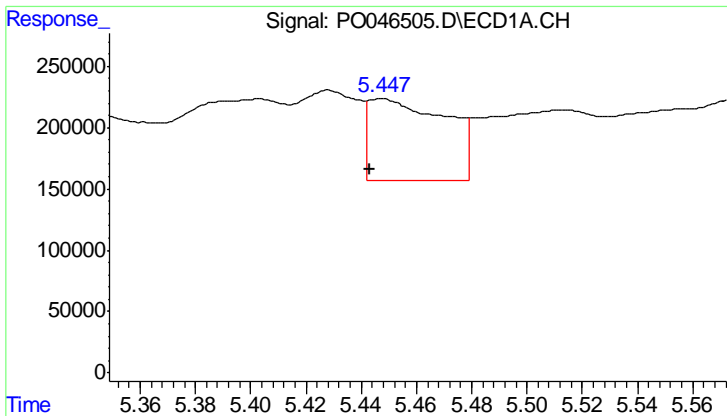
#15 AR-1232-5
 R.T.: 4.796 min
 Delta R.T.: -0.006 min
 Response: 195100
 Conc: 70.04 ng/ml



#16 AR-1242-1
 R.T.: 5.403 min
 Delta R.T.: 0.021 min
 Response: 1734556
 Conc: 170.59 ng/ml



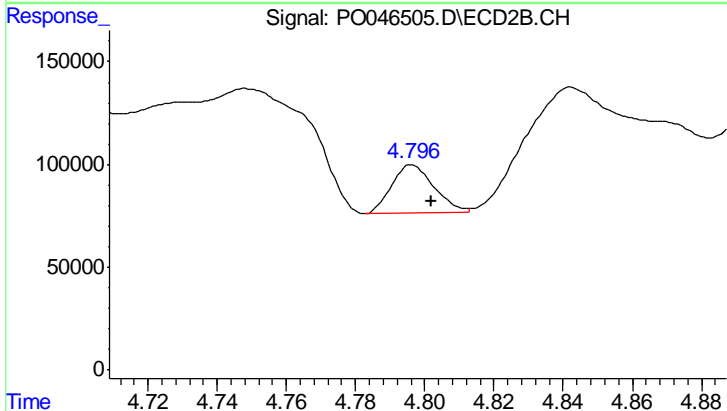
#16 AR-1242-1
 R.T.: 4.607 min
 Delta R.T.: -0.021 min
 Response: 2577651
 Conc: 269.07 ng/ml



#17 AR-1242-2

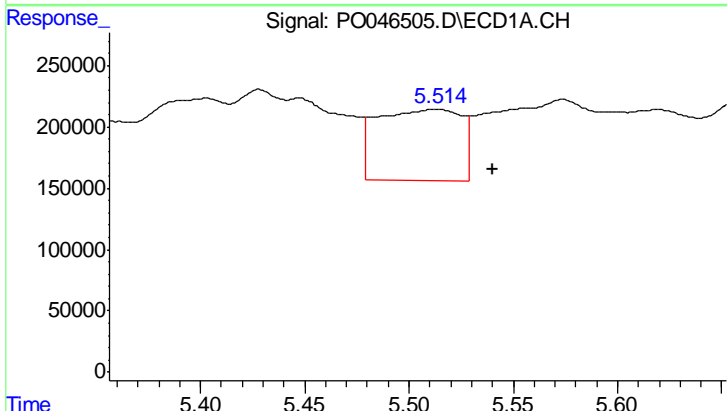
R.T.: 5.447 min
 Delta R.T.: 0.004 min
 Response: 1305904
 Conc: 201.72 ng/ml

Instrument :
 ECD_O
 ClientSampled :
 I.BLK



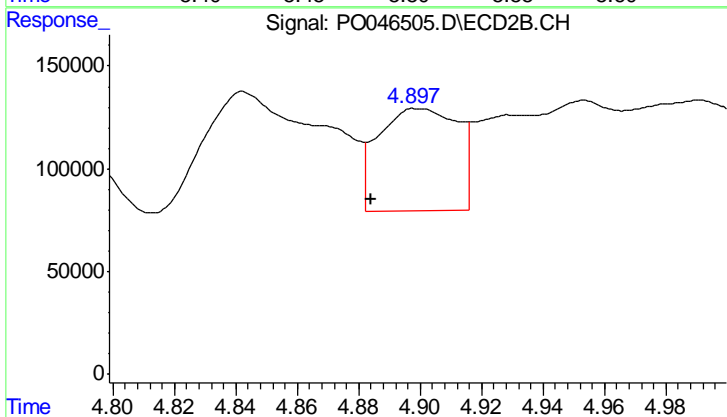
#17 AR-1242-2

R.T.: 4.796 min
 Delta R.T.: -0.006 min
 Response: 195100
 Conc: 35.15 ng/ml



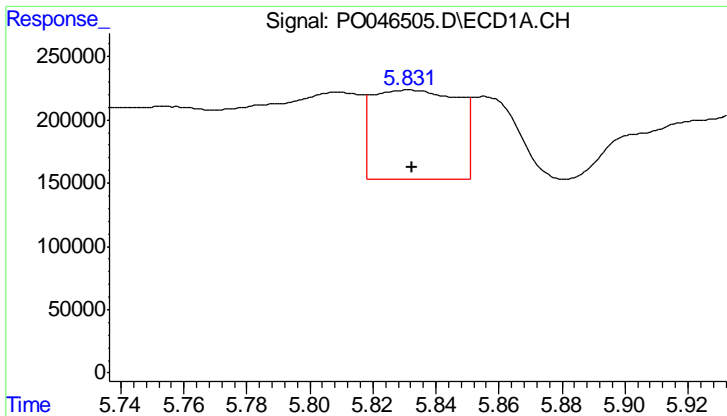
#18 AR-1242-3

R.T.: 5.513 min
 Delta R.T.: -0.027 min
 Response: 1625659
 Conc: 298.39 ng/ml



#18 AR-1242-3

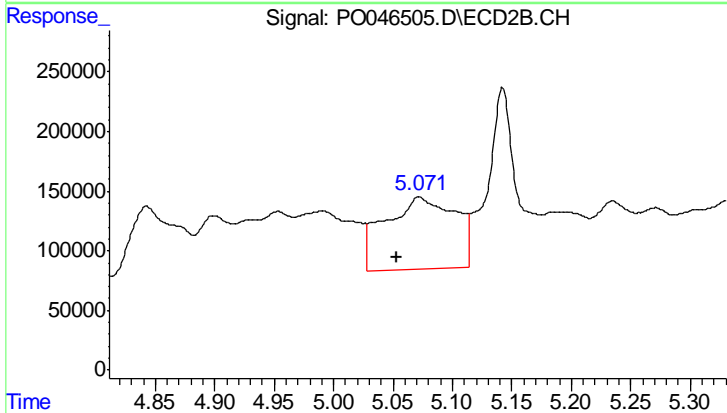
R.T.: 4.899 min
 Delta R.T.: 0.015 min
 Response: 890057
 Conc: 171.41 ng/ml



#19 AR-1242-4

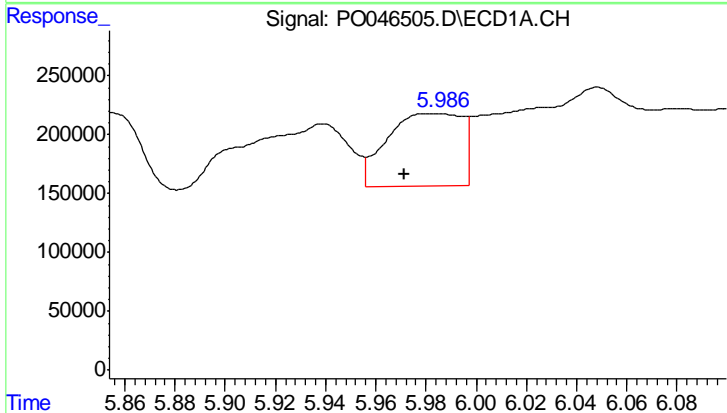
R.T.: 5.832 min
 Delta R.T.: 0.000 min
 Response: 1322609
 Conc: 247.58 ng/ml

Instrument :
 ECD_O
 ClientSampled :
 I.BLK



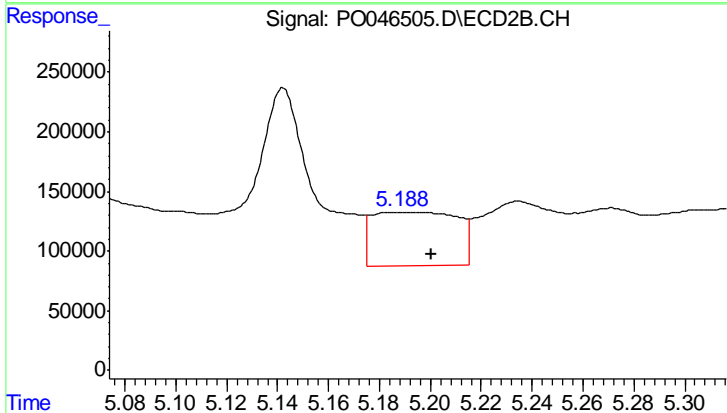
#19 AR-1242-4

R.T.: 5.072 min
 Delta R.T.: 0.018 min
 Response: 2495949
 Conc: 439.82 ng/ml



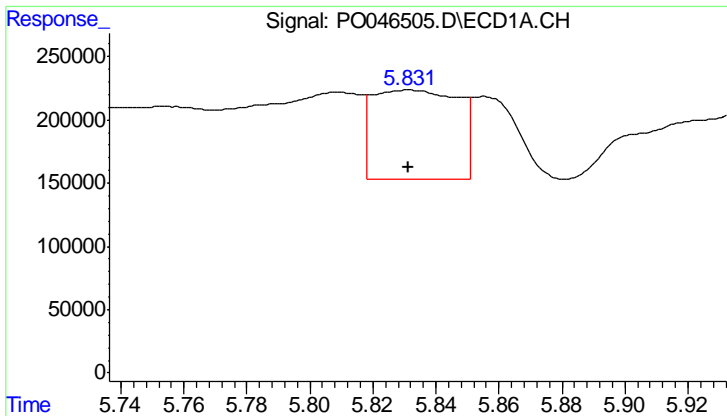
#20 AR-1242-5

R.T.: 5.985 min
 Delta R.T.: 0.013 min
 Response: 1288354
 Conc: 213.58 ng/ml



#20 AR-1242-5

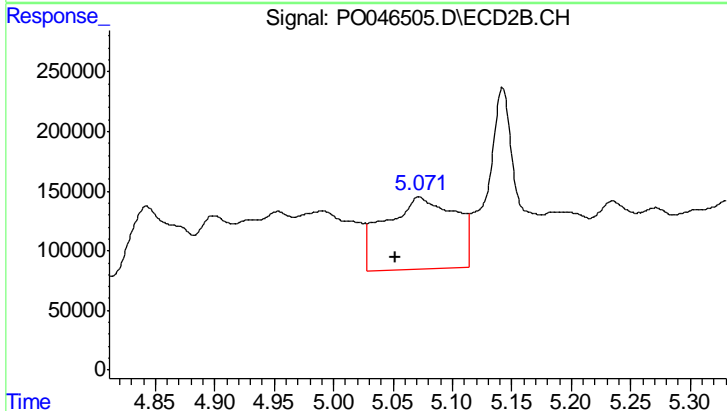
R.T.: 5.188 min
 Delta R.T.: -0.013 min
 Response: 1046147
 Conc: 201.95 ng/ml



#21 AR-1248-1

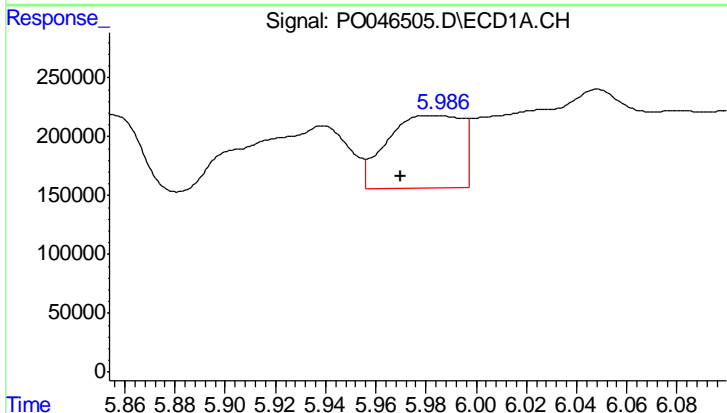
R.T.: 5.832 min
 Delta R.T.: 0.000 min
 Response: 1322609
 Conc: 166.70 ng/ml

Instrument :
 ECD_O
 ClientSampled :
 I.BLK



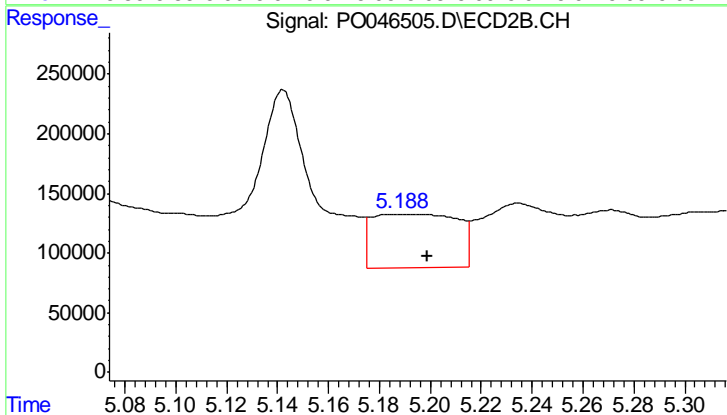
#21 AR-1248-1

R.T.: 5.072 min
 Delta R.T.: 0.019 min
 Response: 2495949
 Conc: 295.16 ng/ml



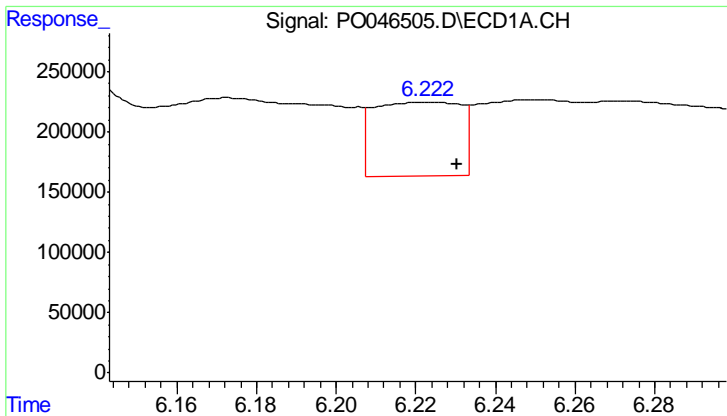
#22 AR-1248-2

R.T.: 5.985 min
 Delta R.T.: 0.015 min
 Response: 1288354
 Conc: 181.95 ng/ml



#22 AR-1248-2

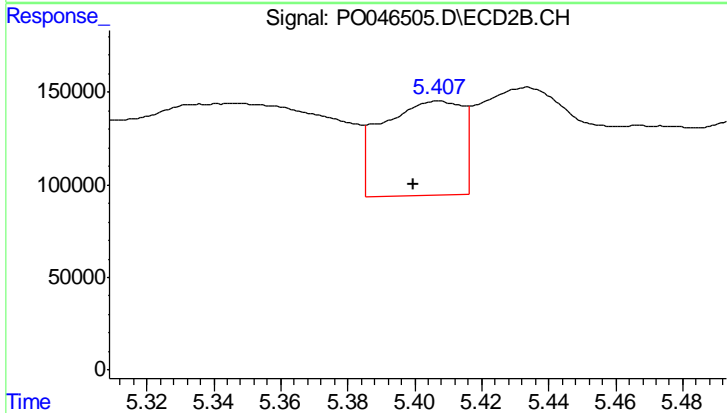
R.T.: 5.188 min
 Delta R.T.: -0.011 min
 Response: 1046147
 Conc: 163.90 ng/ml



#23 AR-1248-3

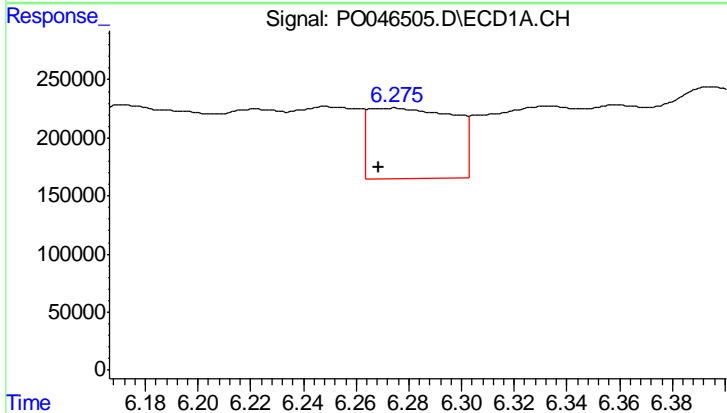
R.T.: 6.222 min
 Delta R.T.: -0.009 min
 Response: 934514
 Conc: 102.00 ng/ml

Instrument :
 ECD_O
 ClientSampled :
 I.BLK



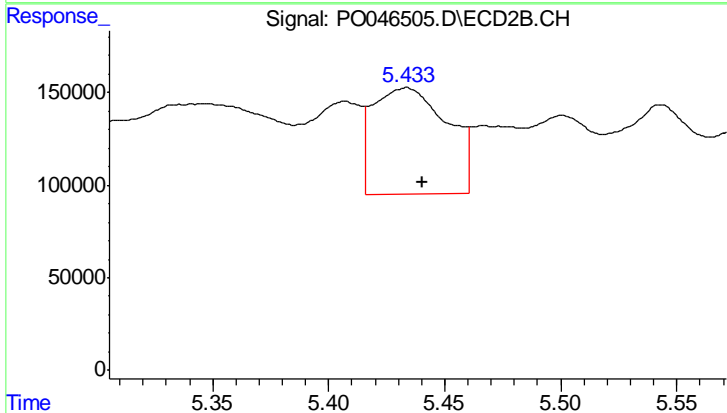
#23 AR-1248-3

R.T.: 5.407 min
 Delta R.T.: 0.007 min
 Response: 844912
 Conc: 68.66 ng/ml



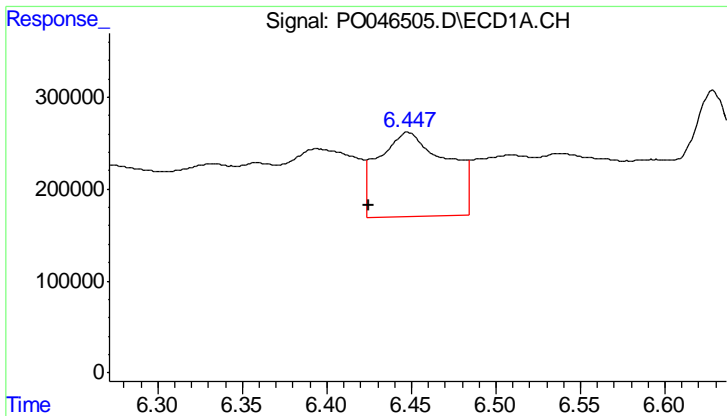
#24 AR-1248-4

R.T.: 6.274 min
 Delta R.T.: 0.005 min
 Response: 1357668
 Conc: 153.06 ng/ml



#24 AR-1248-4

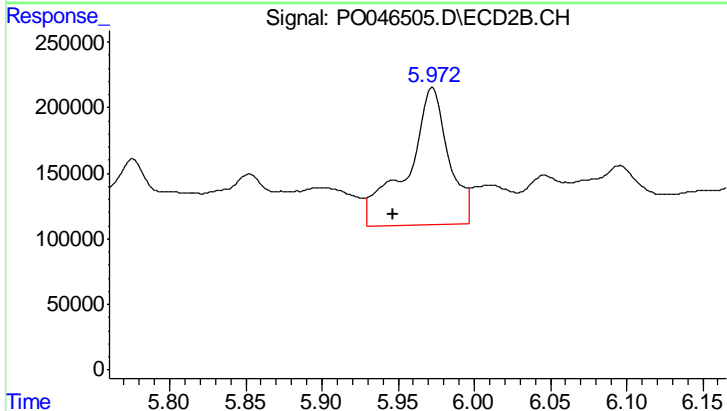
R.T.: 5.434 min
 Delta R.T.: -0.007 min
 Response: 1276975
 Conc: 146.70 ng/ml



#25 AR-1248-5

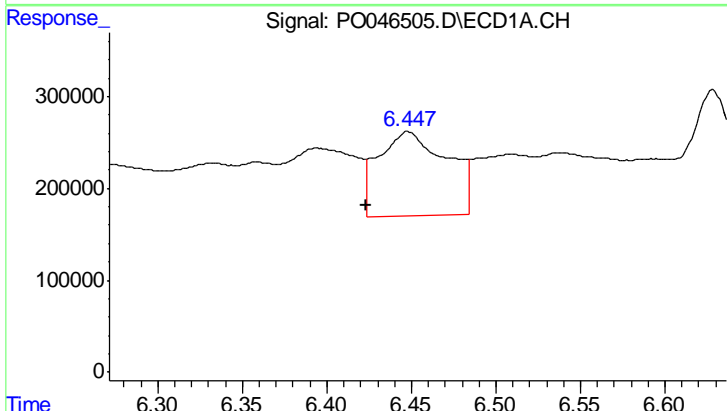
R.T.: 6.448 min
 Delta R.T.: 0.023 min
 Response: 2609587
 Conc: 286.74 ng/ml

Instrument :
 ECD_O
 ClientSampled :
 I.BLK



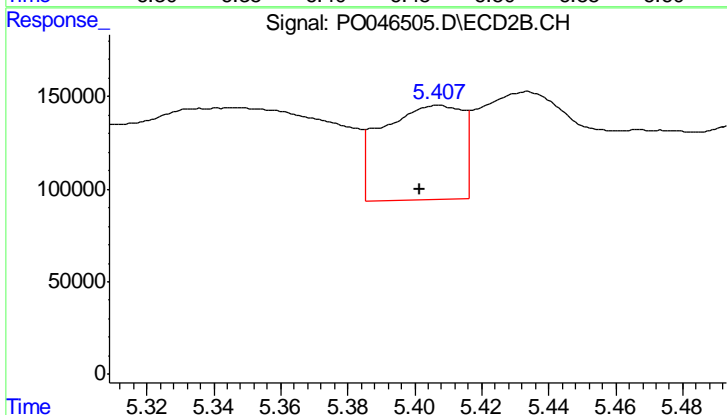
#25 AR-1248-5

R.T.: 5.972 min
 Delta R.T.: 0.026 min
 Response: 1980227
 Conc: 338.23 ng/ml



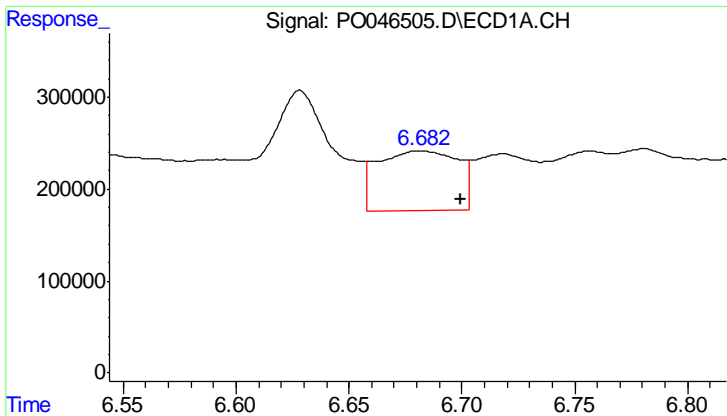
#26 AR-1254-1

R.T.: 6.448 min
 Delta R.T.: 0.025 min
 Response: 2609587
 Conc: 187.15 ng/ml



#26 AR-1254-1

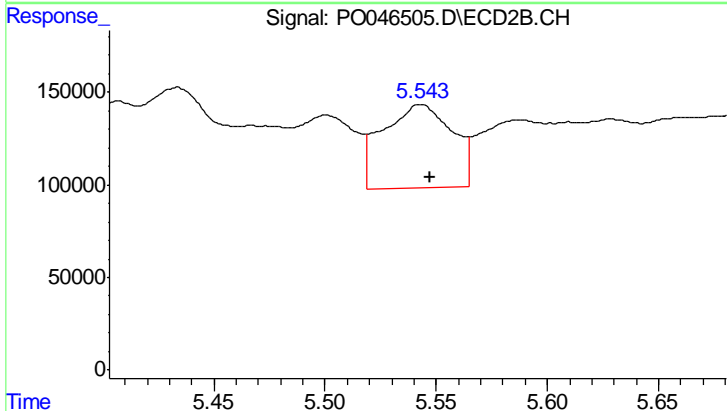
R.T.: 5.407 min
 Delta R.T.: 0.005 min
 Response: 844912
 Conc: 63.19 ng/ml



#27 AR-1254-2

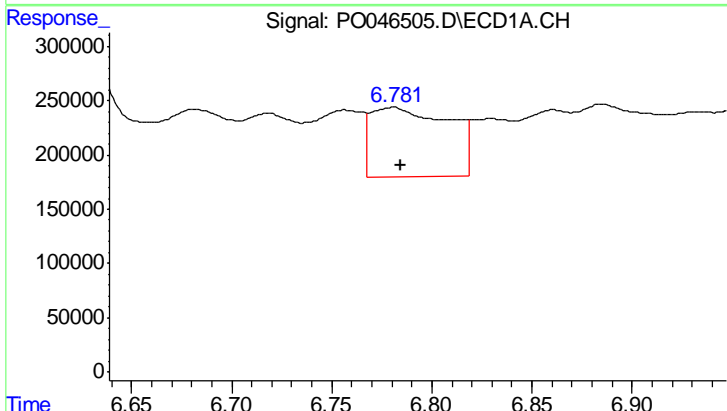
R.T.: 6.682 min
 Delta R.T.: -0.018 min
 Response: 1607165
 Conc: 182.46 ng/ml

Instrument :
 ECD_O
 ClientSampleId :
 I.BLK



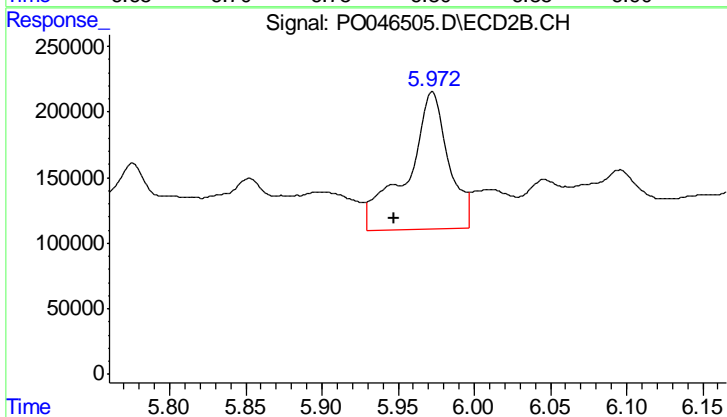
#27 AR-1254-2

R.T.: 5.543 min
 Delta R.T.: -0.004 min
 Response: 987852
 Conc: 85.46 ng/ml



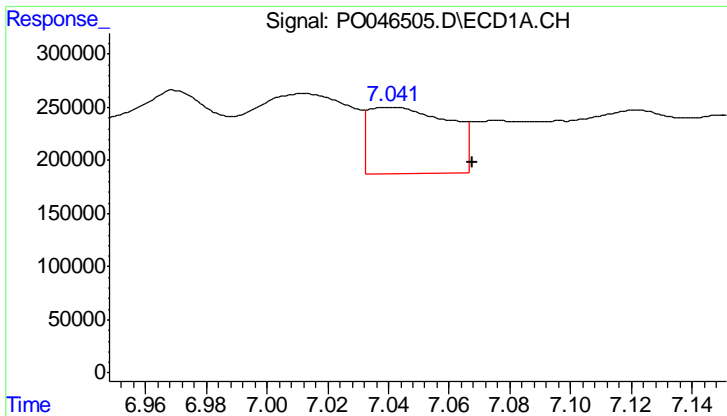
#28 AR-1254-3

R.T.: 6.781 min
 Delta R.T.: -0.004 min
 Response: 1741507
 Conc: 113.90 ng/ml



#28 AR-1254-3

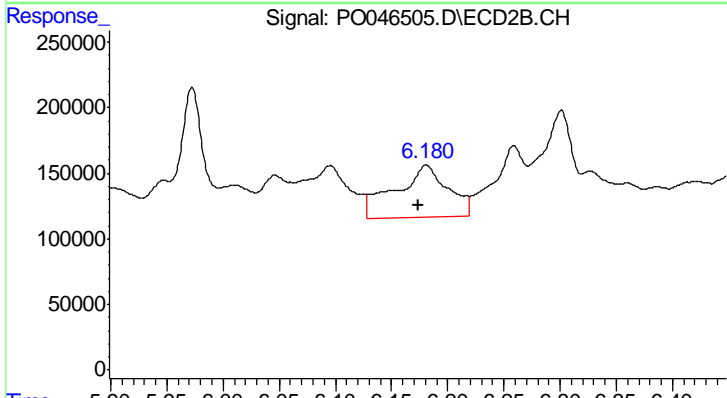
R.T.: 5.972 min
 Delta R.T.: 0.025 min
 Response: 1980227
 Conc: 100.62 ng/ml



#29 AR-1254-4

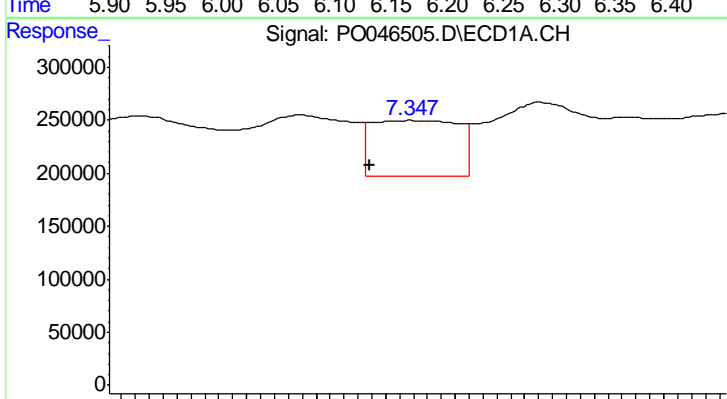
R.T.: 7.042 min
 Delta R.T.: -0.026 min
 Response: 1149172
 Conc: 100.12 ng/ml

Instrument :
 ECD_O
 ClientSampled :
 I.BLK



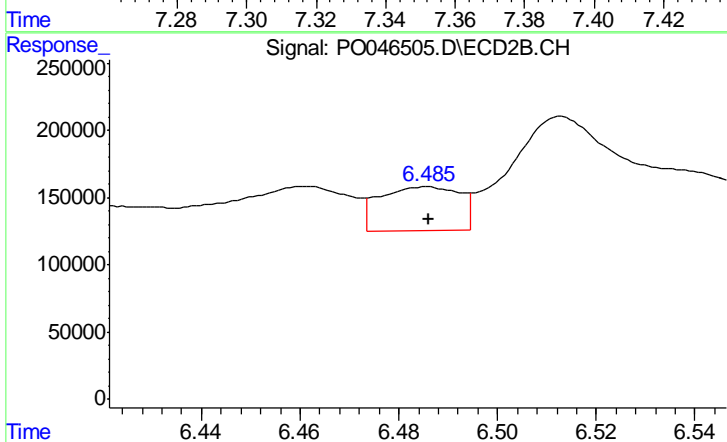
#29 AR-1254-4

R.T.: 6.181 min
 Delta R.T.: 0.007 min
 Response: 1295736
 Conc: 102.76 ng/ml



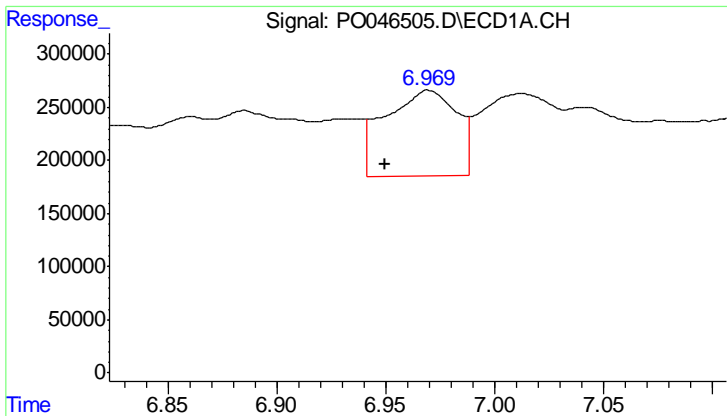
#30 AR-1254-5

R.T.: 7.347 min
 Delta R.T.: 0.011 min
 Response: 917129
 Conc: 103.34 ng/ml



#30 AR-1254-5

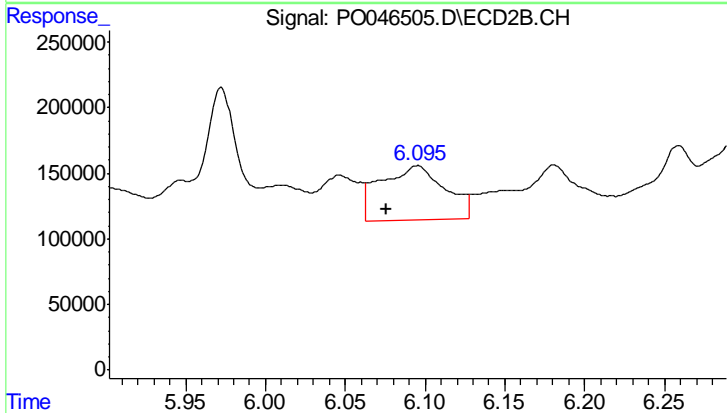
R.T.: 6.486 min
 Delta R.T.: 0.000 min
 Response: 365363
 Conc: 40.28 ng/ml



#31 AR-1260-1

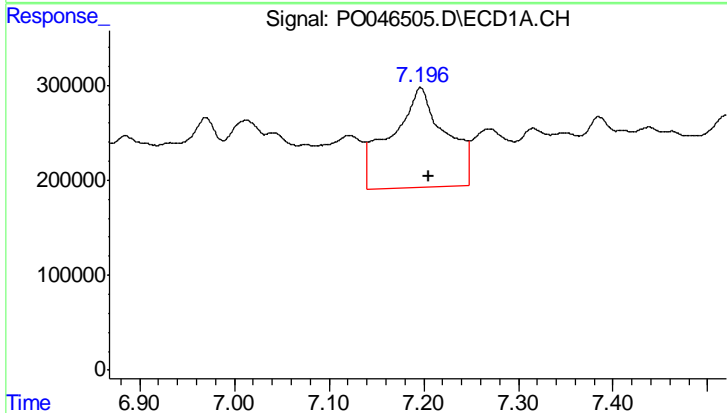
R.T.: 6.970 min
 Delta R.T.: 0.020 min
 Response: 1857868
 Conc: 161.76 ng/ml

Instrument :
 ECD_O
 ClientSampled :
 I.BLK



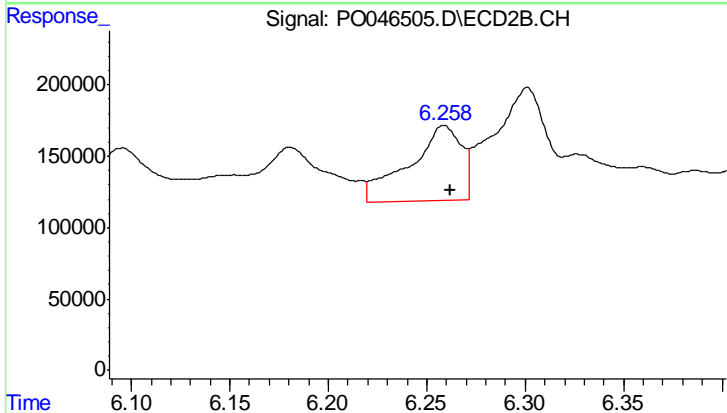
#31 AR-1260-1

R.T.: 6.095 min
 Delta R.T.: 0.019 min
 Response: 1173628
 Conc: 89.97 ng/ml



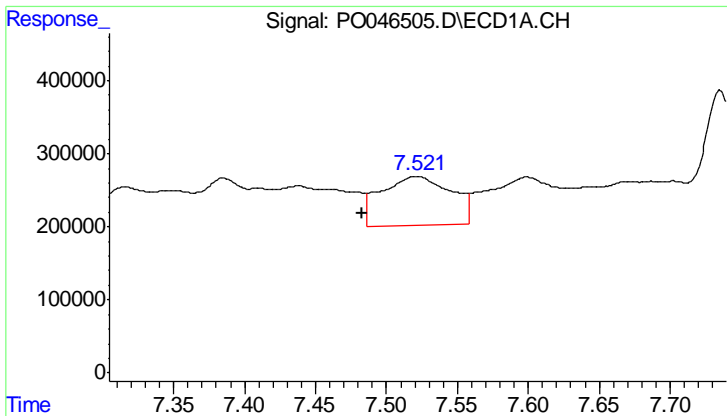
#32 AR-1260-2

R.T.: 7.197 min
 Delta R.T.: -0.008 min
 Response: 4199891
 Conc: 311.11 ng/ml



#32 AR-1260-2

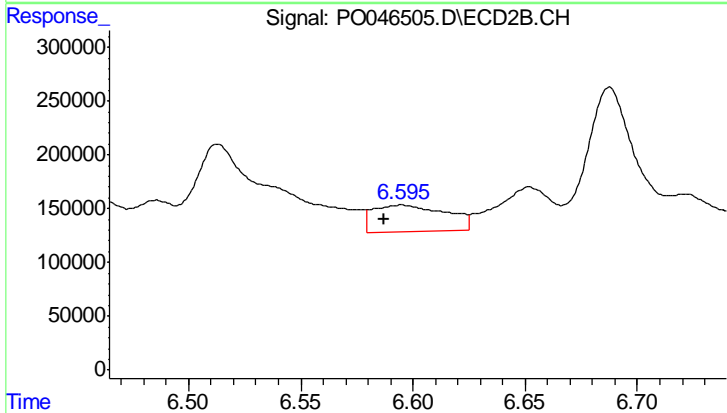
R.T.: 6.259 min
 Delta R.T.: -0.003 min
 Response: 980882
 Conc: 61.52 ng/ml



#33 AR-1260-3

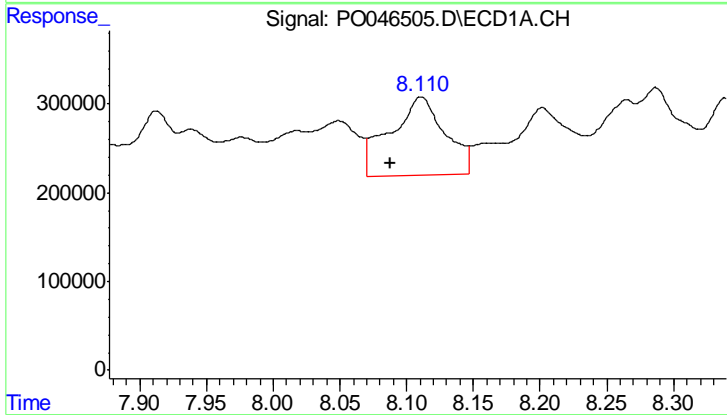
R.T.: 7.522 min
 Delta R.T.: 0.039 min
 Response: 2322878
 Conc: 143.57 ng/ml

Instrument :
 ECD_O
 ClientSampled :
 I.BLK



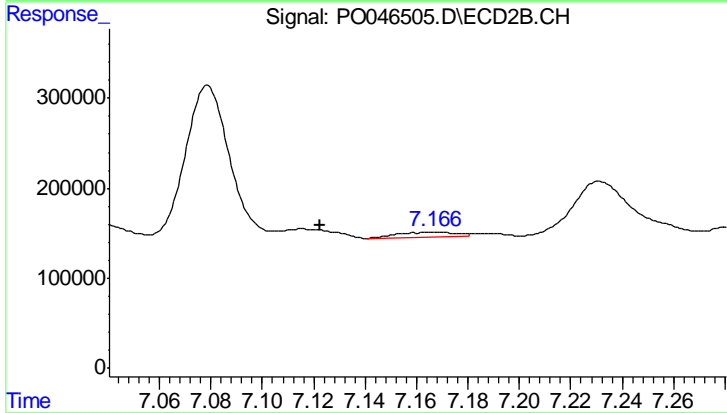
#33 AR-1260-3

R.T.: 6.595 min
 Delta R.T.: 0.008 min
 Response: 563498
 Conc: 31.42 ng/ml



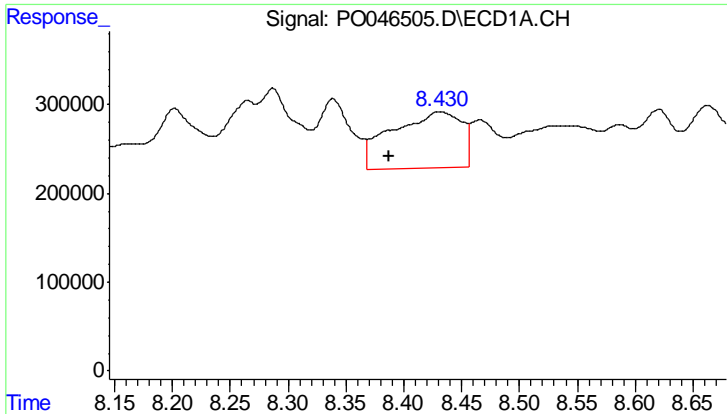
#34 AR-1260-4

R.T.: 8.111 min
 Delta R.T.: 0.023 min
 Response: 2540136
 Conc: 120.82 ng/ml



#34 AR-1260-4

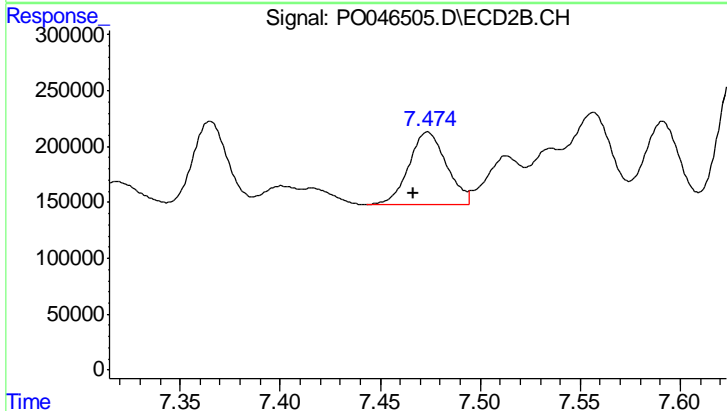
R.T.: 7.166 min
 Delta R.T.: 0.044 min
 Response: 88090
 Conc: 3.17 ng/ml



#35 AR-1260-5

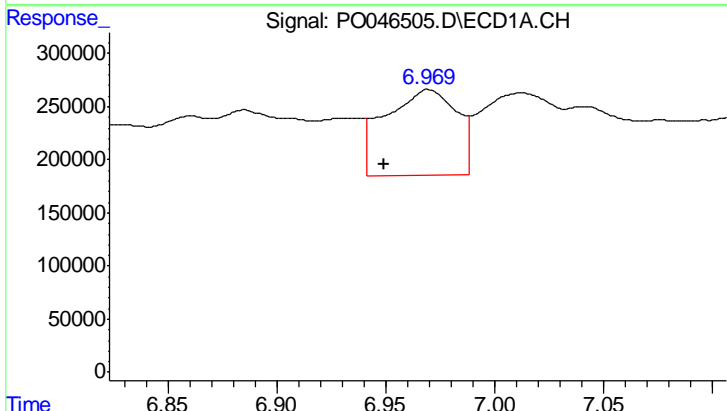
R.T.: 8.431 min
 Delta R.T.: 0.044 min
 Response: 2645736
 Conc: 196.17 ng/ml

Instrument :
 ECD_O
 ClientSampled :
 I.BLK



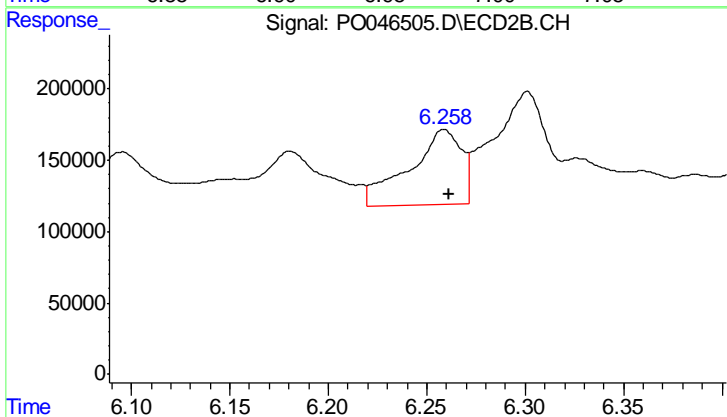
#35 AR-1260-5

R.T.: 7.474 min
 Delta R.T.: 0.007 min
 Response: 859387
 Conc: 44.73 ng/ml



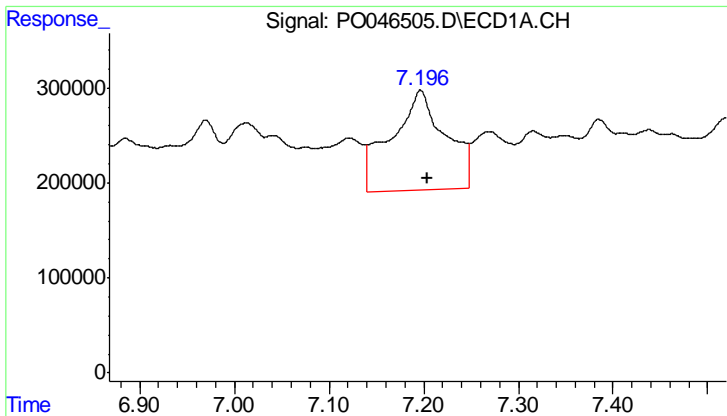
#36 AR-1262-1

R.T.: 6.970 min
 Delta R.T.: 0.020 min
 Response: 1857868
 Conc: 195.03 ng/ml



#36 AR-1262-1

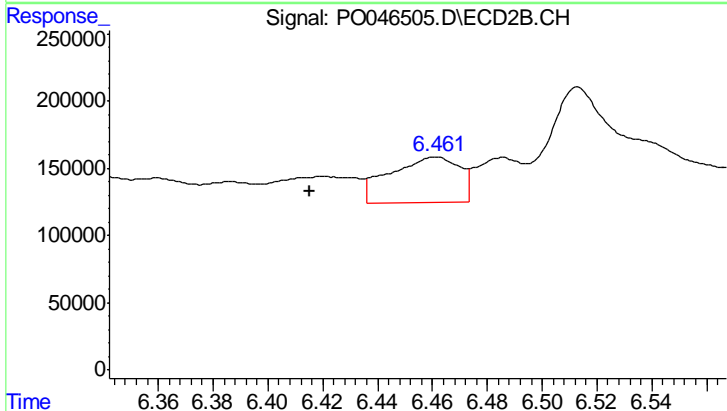
R.T.: 6.259 min
 Delta R.T.: -0.003 min
 Response: 980882
 Conc: 74.89 ng/ml



#37 AR-1262-2

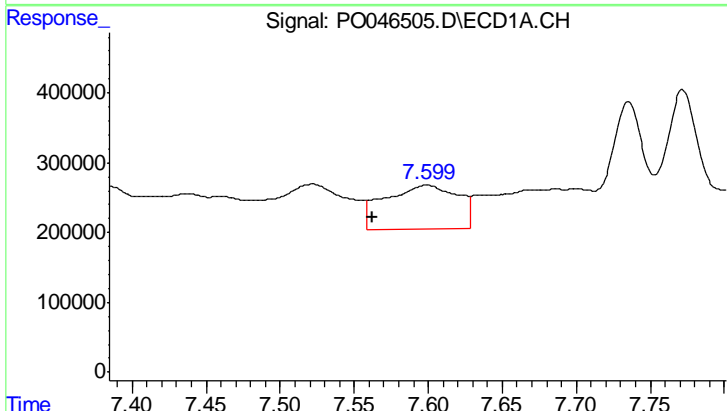
R.T.: 7.197 min
 Delta R.T.: -0.008 min
 Response: 4199891
 Conc: 377.09 ng/ml

Instrument :
 ECD_O
 ClientSampled :
 I.BLK



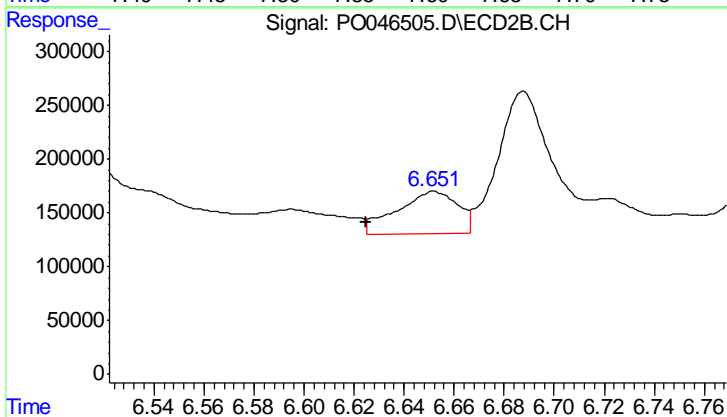
#37 AR-1262-2

R.T.: 6.461 min
 Delta R.T.: 0.046 min
 Response: 597789
 Conc: 46.15 ng/ml



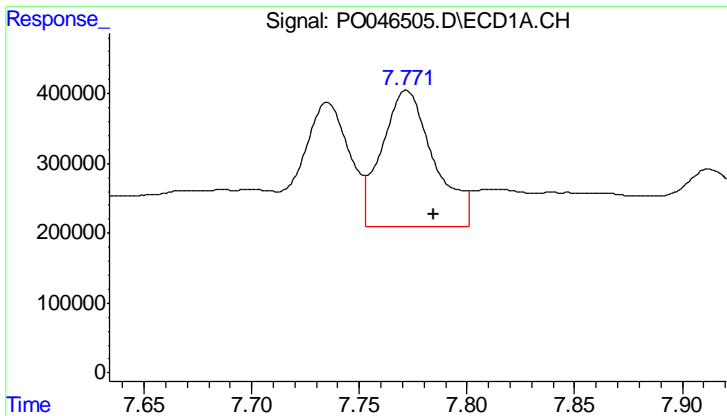
#38 AR-1262-3

R.T.: 7.599 min
 Delta R.T.: 0.037 min
 Response: 2177981
 Conc: 152.10 ng/ml



#38 AR-1262-3

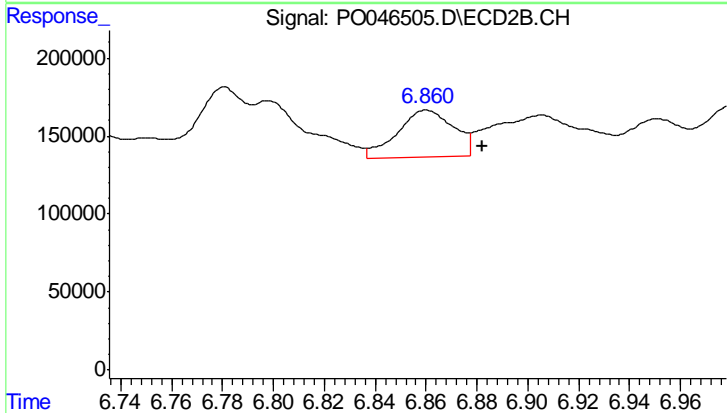
R.T.: 6.652 min
 Delta R.T.: 0.027 min
 Response: 676513
 Conc: 38.63 ng/ml



#39 AR-1262-4

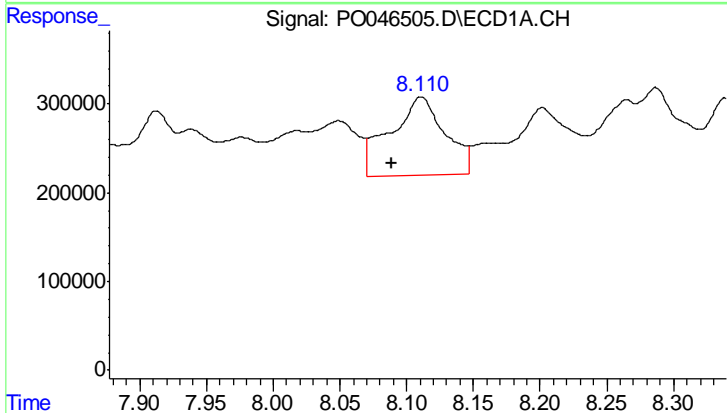
R.T.: 7.772 min
 Delta R.T.: -0.013 min
 Response: 3282250
 Conc: 244.12 ng/ml

Instrument :
 ECD_O
 ClientSampleId :
 I.BLK



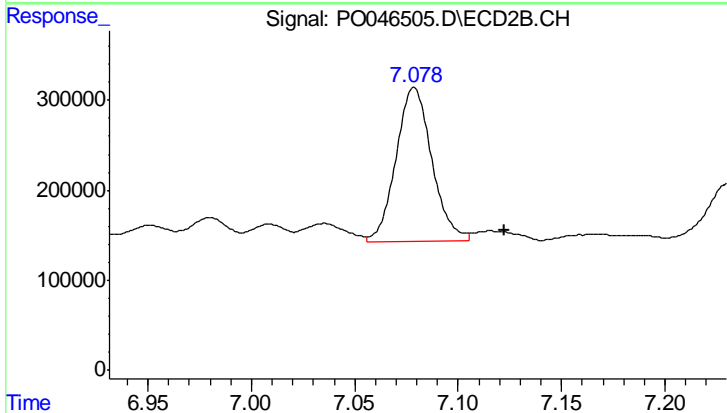
#39 AR-1262-4

R.T.: 6.860 min
 Delta R.T.: -0.022 min
 Response: 463524
 Conc: 30.32 ng/ml



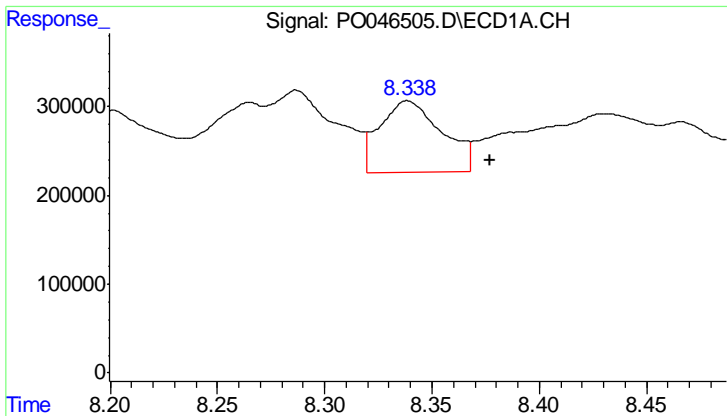
#40 AR-1262-5

R.T.: 8.111 min
 Delta R.T.: 0.022 min
 Response: 2540136
 Conc: 104.95 ng/ml



#40 AR-1262-5

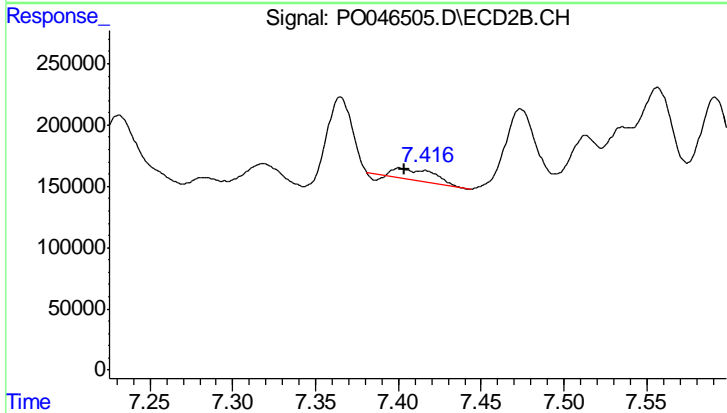
R.T.: 7.079 min
 Delta R.T.: -0.043 min
 Response: 2086040
 Conc: 67.58 ng/ml



#41 AR-1268-1

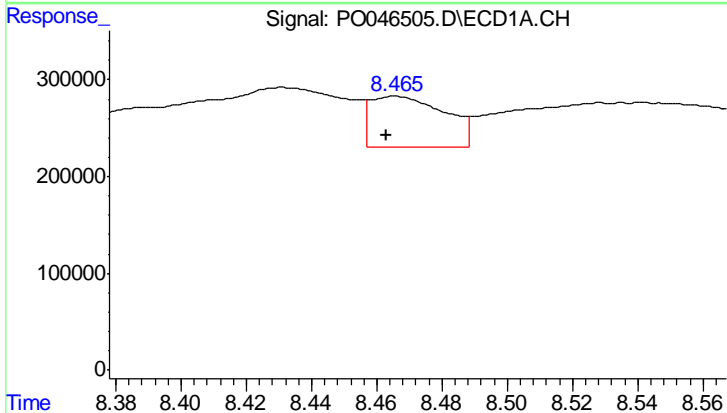
R.T.: 8.339 min
 Delta R.T.: -0.038 min
 Response: 1597754
 Conc: 65.55 ng/ml

Instrument :
 ECD_O
 ClientSampleId :
 I.BLK



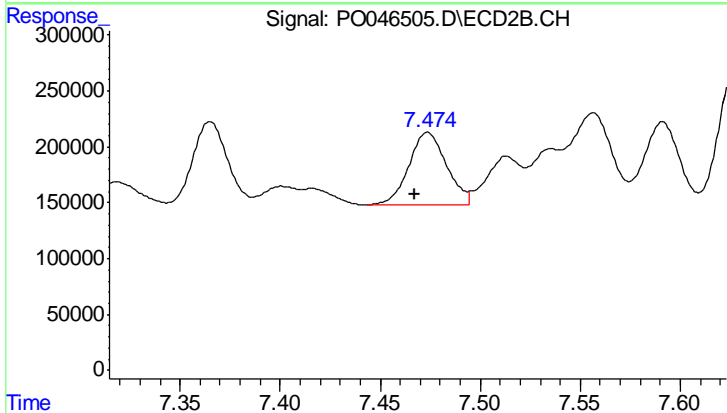
#41 AR-1268-1

R.T.: 7.401 min
 Delta R.T.: -0.003 min
 Response: 137665
 Conc: 4.92 ng/ml



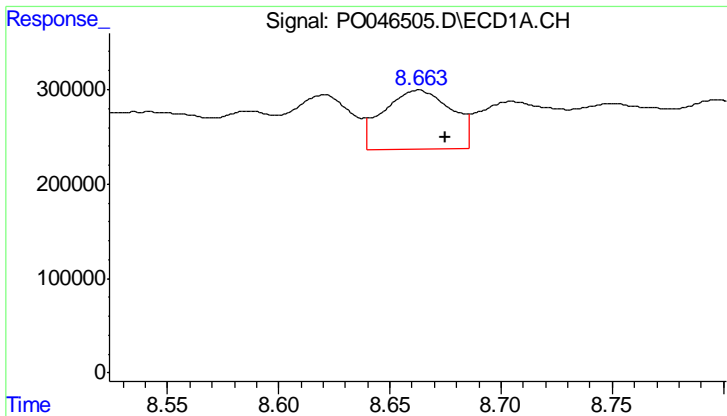
#42 AR-1268-2

R.T.: 8.466 min
 Delta R.T.: 0.003 min
 Response: 837557
 Conc: 36.97 ng/ml



#42 AR-1268-2

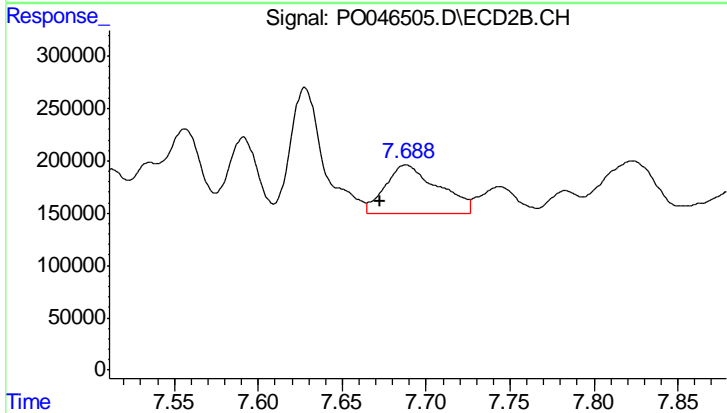
R.T.: 7.474 min
 Delta R.T.: 0.006 min
 Response: 859387
 Conc: 31.20 ng/ml



#43 AR-1268-3

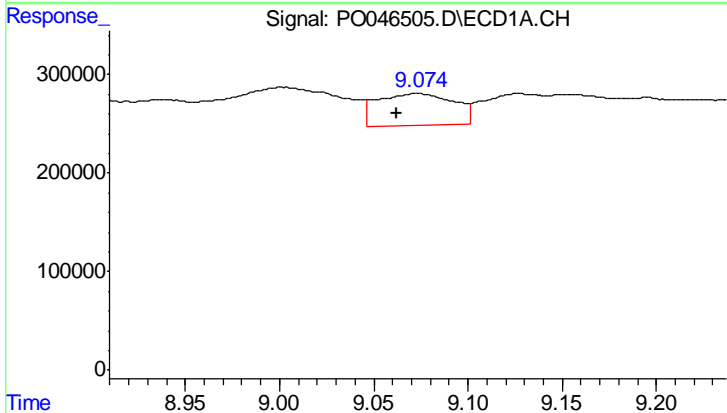
R.T.: 8.663 min
 Delta R.T.: -0.012 min
 Response: 1356139
 Conc: 71.81 ng/ml

Instrument :
 ECD_O
 ClientSampled :
 I.BLK



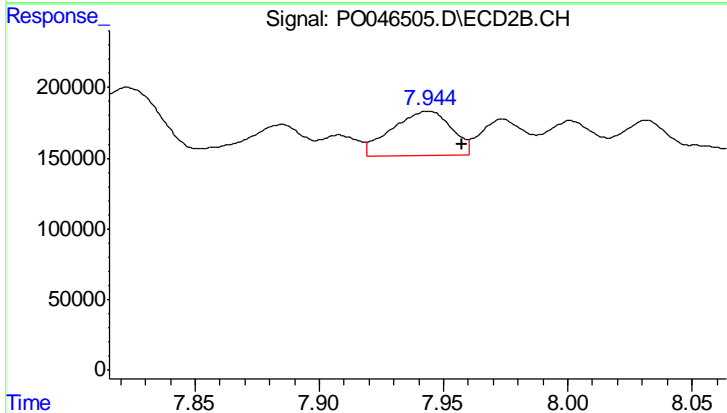
#43 AR-1268-3

R.T.: 7.688 min
 Delta R.T.: 0.016 min
 Response: 1013381
 Conc: 45.39 ng/ml



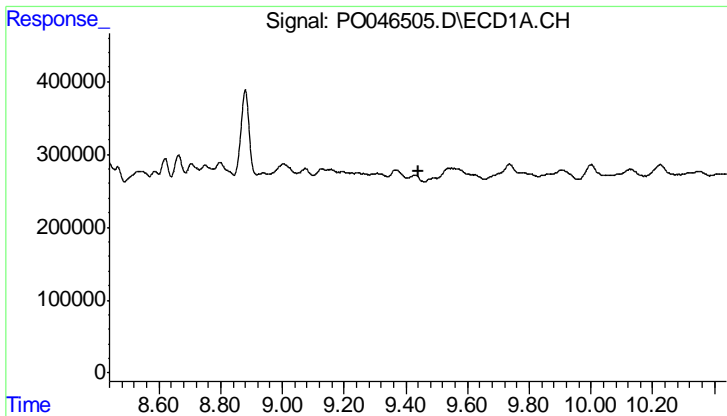
#44 AR-1268-4

R.T.: 9.073 min
 Delta R.T.: 0.011 min
 Response: 906289
 Conc: 106.86 ng/ml



#44 AR-1268-4

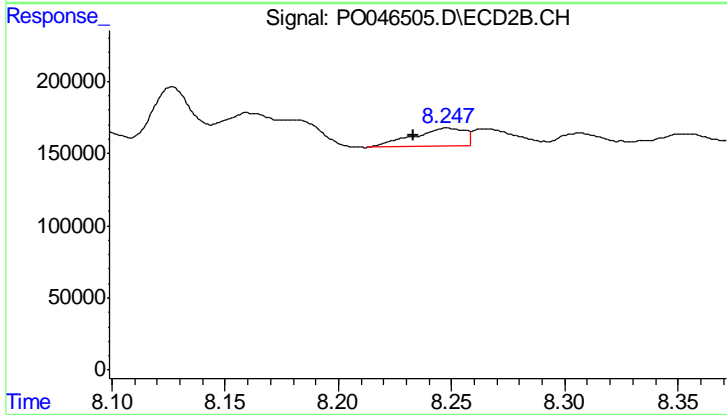
R.T.: 7.944 min
 Delta R.T.: -0.014 min
 Response: 525990
 Conc: 55.27 ng/ml



#45 AR-1268-5

R.T.: 0.000 min
 Exp R.T.: 9.440 min
 Response: 0
 Conc: N.D.

Instrument :
 ECD_O
 ClientSampleId :
 I.BLK



#45 AR-1268-5

R.T.: 8.248 min
 Delta R.T.: 0.015 min
 Response: 197622
 Conc: 3.13 ng/ml