

Data Path : Z:\pestpcbsrv\HPCHEM1\ECD\_0\Data\P0071119\  
 Data File : P0057795.D  
 Signal(s) : Signal #1: ECD1A.CH Signal #2: ECD2B.CH  
 Acq On : 10 Jul 2019 13:11  
 Operator : SM/SJ  
 Sample : K3716-03  
 Misc :  
 ALS Vial : 5 Sample Multiplier: 1

Instrument :  
 ECD\_0  
 ClientSampleId :  
 CONCRETE-3

Integration File signal 1: autoint1.e  
 Integration File signal 2: autoint2.e  
 Quant Time: Jul 11 02:22:03 2019  
 Quant Method : Z:\pestpcbsrv\HPCHEM1\ECD\_0\methods\P0062419.M  
 Quant Title : GC EXTRACTABLES  
 QLast Update : Mon Jun 24 14:02:43 2019  
 Response via : Initial Calibration  
 Integrator: ChemStation 6890 Scale Mode: Small noise peaks clipped

Volume Inj. : 2 µl  
 Signal #1 Phase : ZB-MR1 Signal #2 Phase: ZB-MR2  
 Signal #1 Info : 30Mx0.32mmx 0.50µ Signal #2 Info : 30M x 0.32mm x 0.25µm

| Compound | RT#1 | RT#2 | Resp#1 | Resp#2 | ng/ml | ng/ml |
|----------|------|------|--------|--------|-------|-------|
|----------|------|------|--------|--------|-------|-------|

System Monitoring Compounds

|                    |       |       |         |        |         |          |
|--------------------|-------|-------|---------|--------|---------|----------|
| 1) SA Tetrachlo... | 4.211 | 3.548 | 775151  | 638309 | 19.733m | 18.153   |
| 2) SA Decachlor... | 9.740 | 8.457 | 1077446 | 940186 | 19.160  | 25.134 # |

Target Compounds

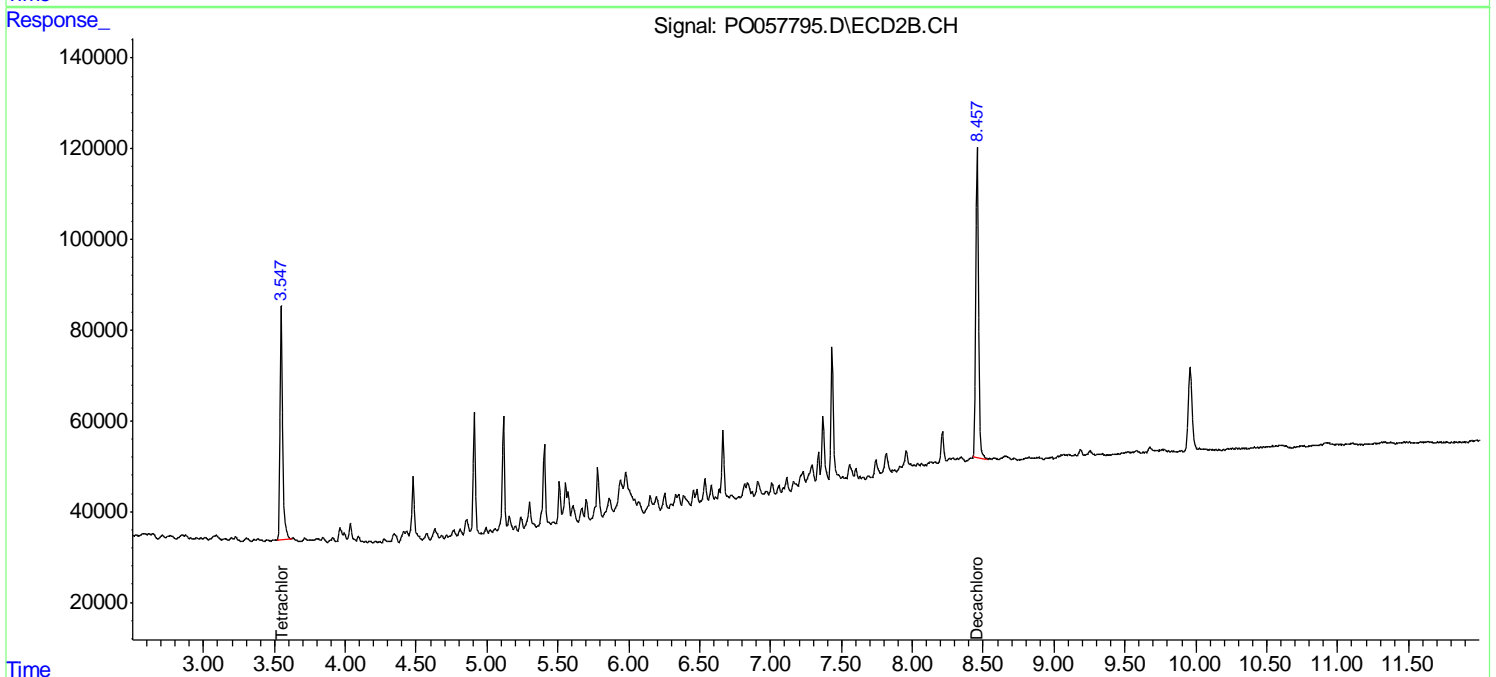
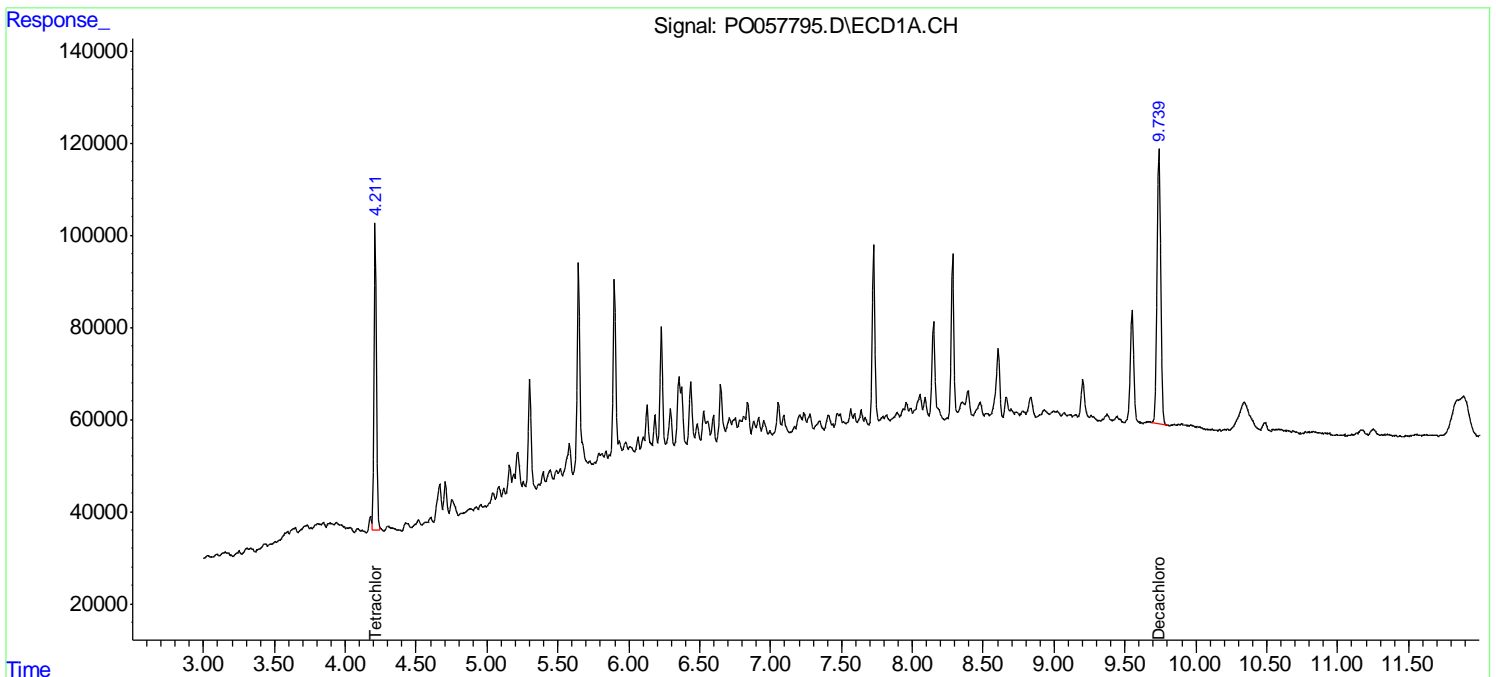
(f)=RT Delta > 1/2 Window (#)=Amounts differ by > 25% (m)=manual int.

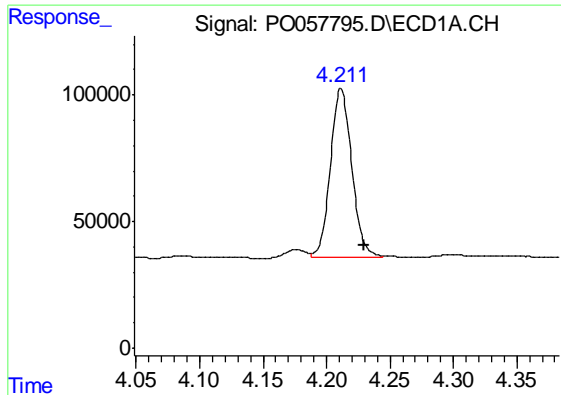
Data Path : Z:\pestpcbsrv\HPCHEM1\ECD\_O\Data\P0071119\  
 Data File : P0057795.D  
 Signal(s) : Signal #1: ECD1A.CH Signal #2: ECD2B.CH  
 Acq On : 10 Jul 2019 13:11  
 Operator : SM/SJ  
 Sample : K3716-03  
 Misc :  
 ALS Vial : 5 Sample Multiplier: 1

Instrument :  
 ECD\_O  
 ClientSampleId :  
 CONCRETE-3

Integration File signal 1: autoint1.e  
 Integration File signal 2: autoint2.e  
 Quant Time: Jul 11 02:22:03 2019  
 Quant Method : Z:\pestpcbsrv\HPCHEM1\ECD\_O\methods\P0062419.M  
 Quant Title : GC EXTRACTABLES  
 QLast Update : Mon Jun 24 14:02:43 2019  
 Response via : Initial Calibration  
 Integrator: ChemStation 6890 Scale Mode: Small noise peaks clipped

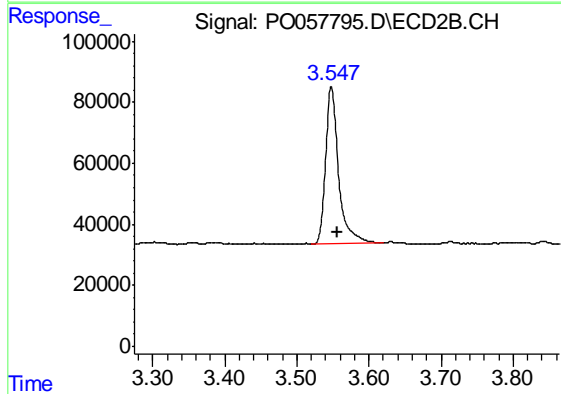
Volume Inj. : 2 µl  
 Signal #1 Phase : ZB-MR1 Signal #2 Phase: ZB-MR2  
 Signal #1 Info : 30Mx0.32mmx 0.50µ Signal #2 Info : 30M x 0.32mm x 0.25µm



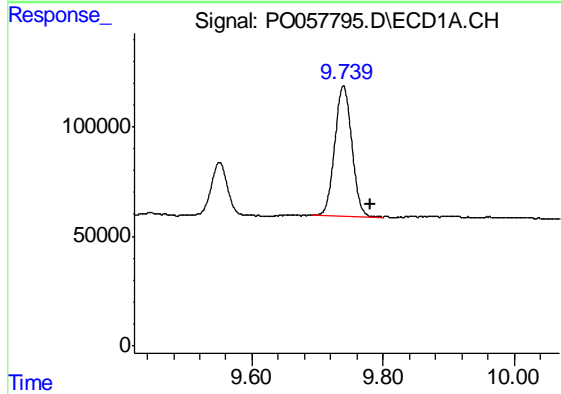


#1 Tetrachloro-m-xylene  
 R.T.: 4.211 min  
 Delta R.T.: -0.019 min  
 Response: 775151  
 Conc: 19.73 ng/ml m

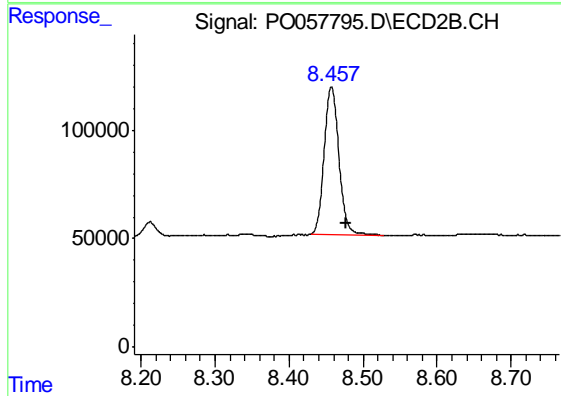
Instrument :  
 ECD\_O  
 ClientSampleId :  
 CONCRETE-3



#1 Tetrachloro-m-xylene  
 R.T.: 3.548 min  
 Delta R.T.: -0.007 min  
 Response: 638309  
 Conc: 18.15 ng/ml



#2 Decachlorobiphenyl  
 R.T.: 9.740 min  
 Delta R.T.: -0.042 min  
 Response: 1077446  
 Conc: 19.16 ng/ml



#2 Decachlorobiphenyl  
 R.T.: 8.457 min  
 Delta R.T.: -0.020 min  
 Response: 940186  
 Conc: 25.13 ng/ml