

Data Path : Z:\pestpcbsrv\HPCHEM1\ECD_0\Data\P0071219\
 Data File : P0057850.D
 Signal(s) : Signal #1: ECD1A.CH Signal #2: ECD2B.CH
 Acq On : 11 Jul 2019 20:54
 Operator : SM/SJ
 Sample : K3757-01
 Misc :
 ALS Vial : 8 Sample Multiplier: 1

Instrument :
 ECD_0
ClientSampleId :
 KY030OF002-SD-190710

Manual Integrations
APPROVED
 Ankita
 7/12/2019 4:29:00 PM

Integration File signal 1: autoint1.e
 Integration File signal 2: autoint2.e
 Quant Time: Jul 12 04:52:39 2019
 Quant Method : Z:\pestpcbsrv\HPCHEM1\ECD_0\methods\P0062419.M
 Quant Title : GC EXTRACTABLES
 QLast Update : Mon Jun 24 14:02:43 2019
 Response via : Initial Calibration
 Integrator: ChemStation 6890 Scale Mode: Small noise peaks clipped

Volume Inj. : 2 µl
 Signal #1 Phase : ZB-MR1 Signal #2 Phase: ZB-MR2
 Signal #1 Info : 30Mx0.32mmx 0.50µ Signal #2 Info : 30M x 0.32mm x 0.25µm

Compound	RT#1	RT#2	Resp#1	Resp#2	ng/ml	ng/ml

System Monitoring Compounds						
1) SA Tetrachlo...	4.207	3.544	488284	422435	12.430	12.014
2) SA Decachlor...	9.732	8.453	454644	306090	8.085	8.183
Target Compounds						
26) L6 AR-1254-1	6.207	5.394	114070	75490	58.565	35.496 #
27) L6 AR-1254-2	6.423	5.540	146905	63605	47.134m	34.173m#
28) L6 AR-1254-3	6.788	5.939	194341	201460	58.783m	66.903m
29) L6 AR-1254-4	7.070	6.166	62973	32151	23.204m	17.861m
30) L6 AR-1254-5	7.486	6.577	325908	234930	116.567	86.719m#
31) L7 AR-1260-1	6.946	6.066	200127	166544	72.212	77.814
32) L7 AR-1260-2	7.202	6.253	324073	188469	87.906m	68.693m
33) L7 AR-1260-3	7.557	6.404	186836	168539	61.497m	69.031
34) L7 AR-1260-4	7.781	6.869	214233	114193	70.640	54.847m
35) L7 AR-1260-5	8.088	7.111	328142	275252	52.473m	54.267

(f)=RT Delta > 1/2 Window (#)=Amounts differ by > 25% (m)=manual int.

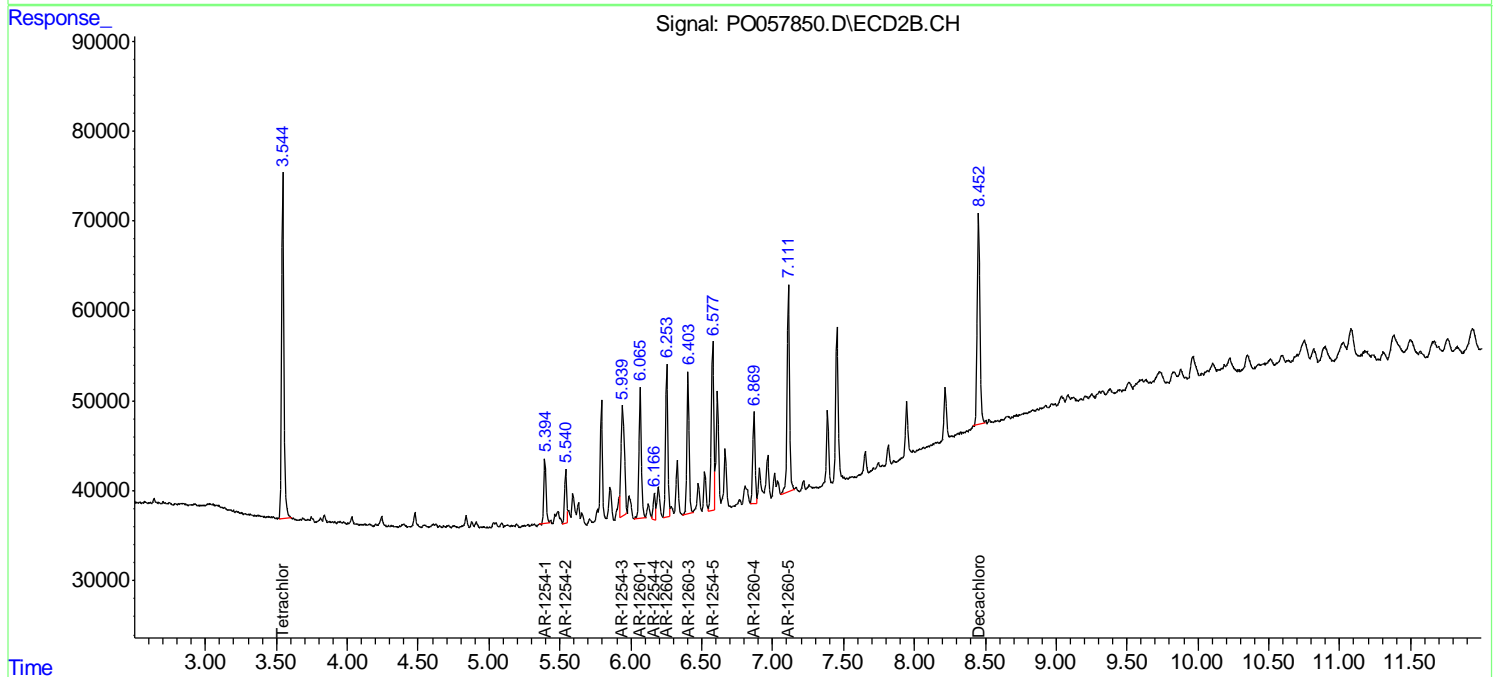
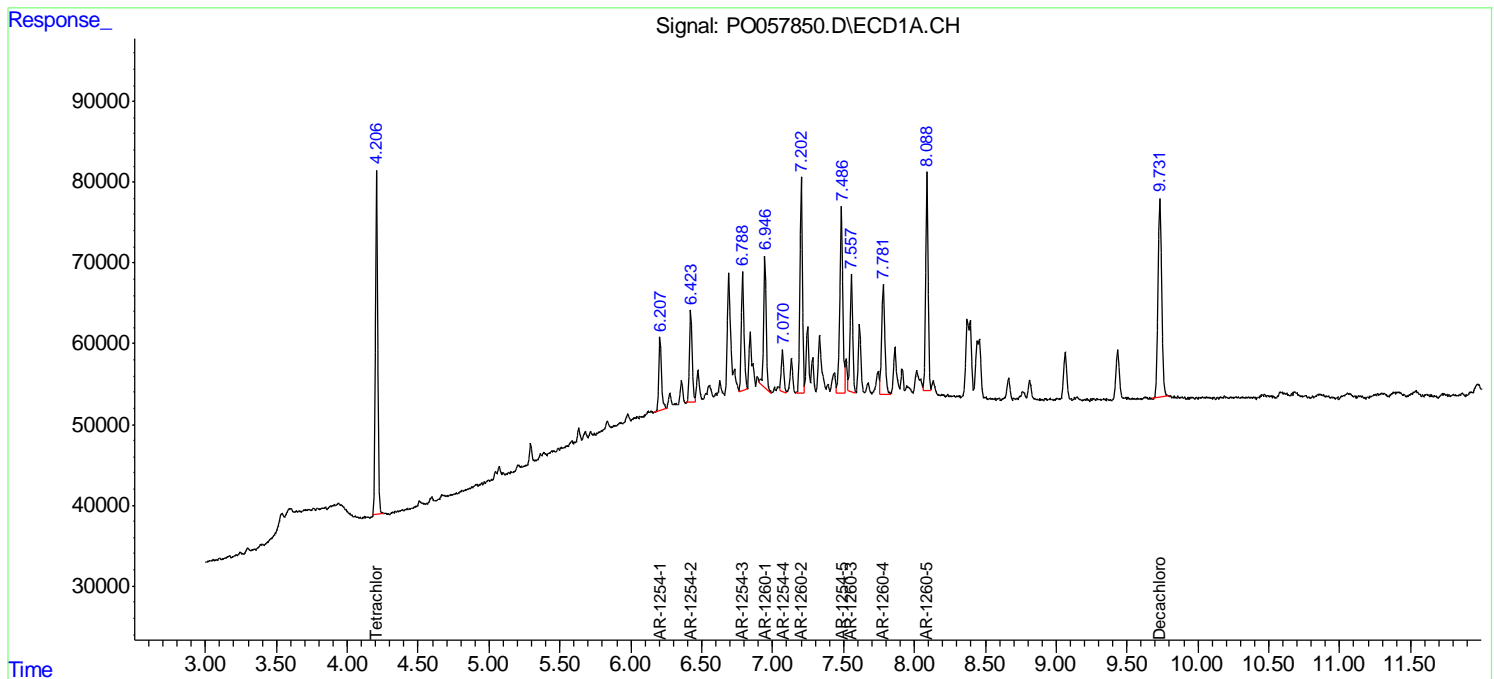
Data Path : Z:\pestpcbsrv\HPCHEM1\ECD_O\Data\P0071219\
 Data File : P0057850.D
 Signal(s) : Signal #1: ECD1A.CH Signal #2: ECD2B.CH
 Acq On : 11 Jul 2019 20:54
 Operator : SM/SJ
 Sample : K3757-01
 Misc :
 ALS Vial : 8 Sample Multiplier: 1

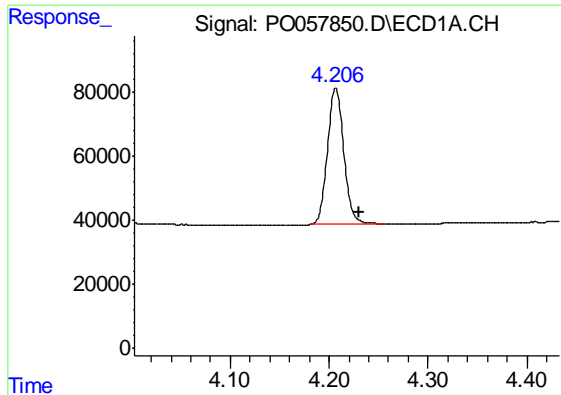
Instrument :
 ECD_O
Client Sampled :
 KY030OF002-SD-190710

Manual Integrations
APPROVED
 Ankita
 7/12/2019 4:29:00 PM

Integration File signal 1: autoint1.e
 Integration File signal 2: autoint2.e
 Quant Time: Jul 12 04:52:39 2019
 Quant Method : Z:\pestpcbsrv\HPCHEM1\ECD_O\methods\P0062419.M
 Quant Title : GC EXTRACTABLES
 QLast Update : Mon Jun 24 14:02:43 2019
 Response via : Initial Calibration
 Integrator: ChemStation 6890 Scale Mode: Small noise peaks clipped

Volume Inj. : 2 µl
 Signal #1 Phase : ZB-MR1 Signal #2 Phase: ZB-MR2
 Signal #1 Info : 30Mx0.32mmx 0.50µ Signal #2 Info : 30M x 0.32mm x 0.25µm



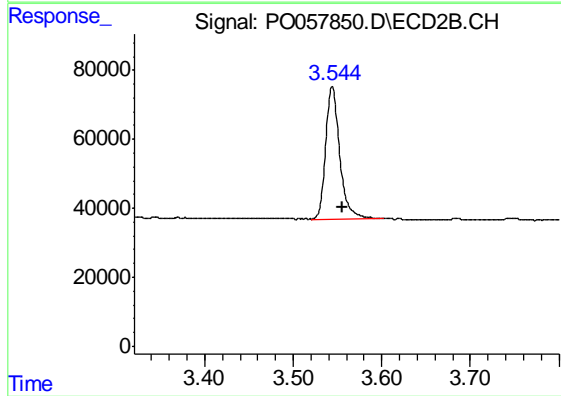


#1 Tetrachloro-m-xylene

R.T.: 4.207 min
 Delta R.T.: -0.023 min
 Response: 488284
 Conc: 12.43 ng/ml

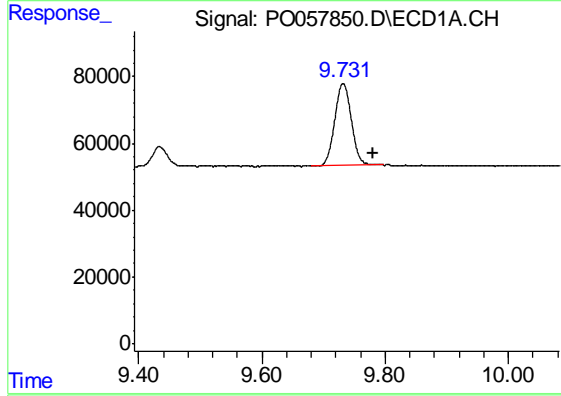
Instrument :
 ECD_O
 ClientSampleId :
 KY0300F002-SD-190710

Manual Integrations
 APPROVED
 Ankita
 7/12/2019 4:29:00 PM



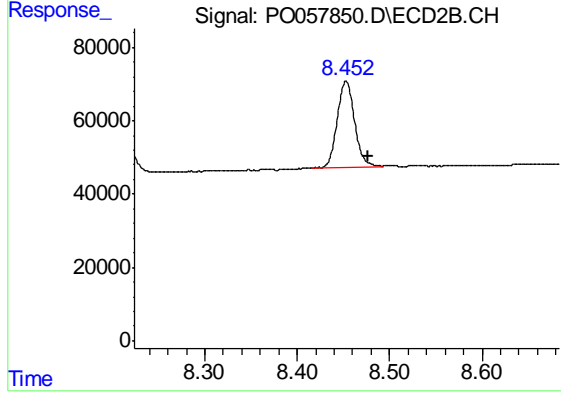
#1 Tetrachloro-m-xylene

R.T.: 3.544 min
 Delta R.T.: -0.011 min
 Response: 422435
 Conc: 12.01 ng/ml



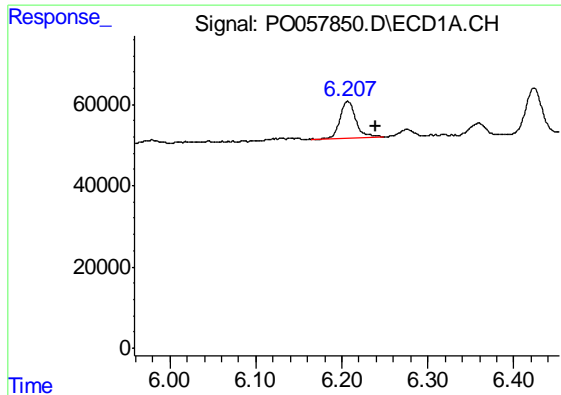
#2 Decachlorobiphenyl

R.T.: 9.732 min
 Delta R.T.: -0.050 min
 Response: 454644
 Conc: 8.08 ng/ml



#2 Decachlorobiphenyl

R.T.: 8.453 min
 Delta R.T.: -0.024 min
 Response: 306090
 Conc: 8.18 ng/ml



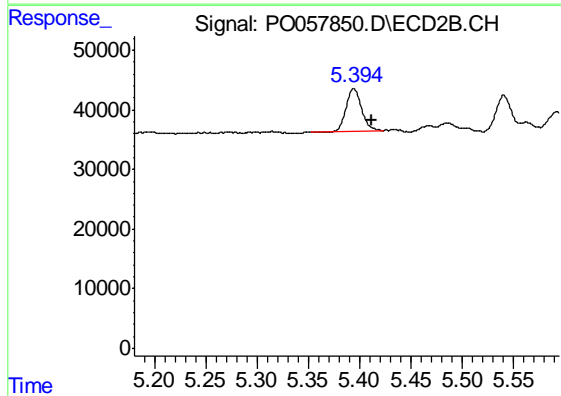
#26 AR-1254-1

R.T.: 6.207 min
 Delta R.T.: -0.033 min
 Response: 114070
 Conc: 58.56 ng/ml

Instrument :
 ECD_O
 ClientSampleId :
 KY0300F002-SD-190710

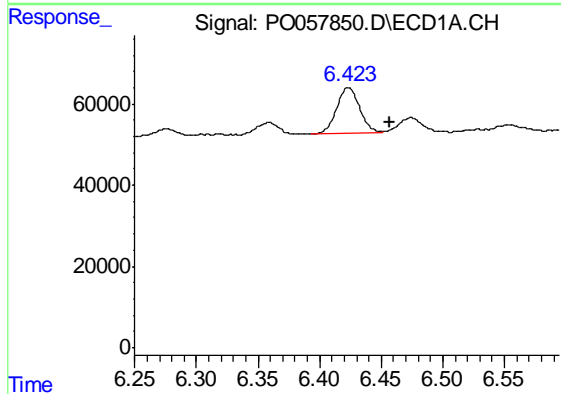
Manual Integrations
 APPROVED

Ankita
 7/12/2019 4:29:00 PM



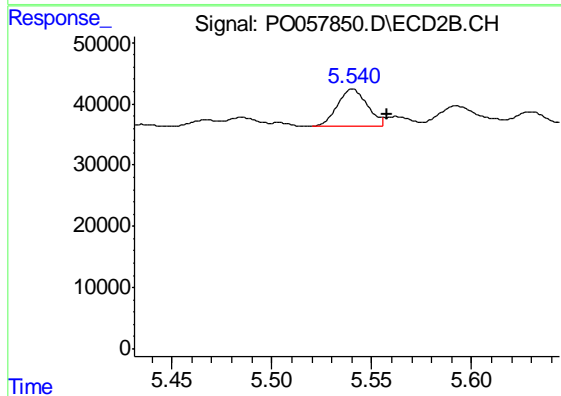
#26 AR-1254-1

R.T.: 5.394 min
 Delta R.T.: -0.018 min
 Response: 75490
 Conc: 35.50 ng/ml



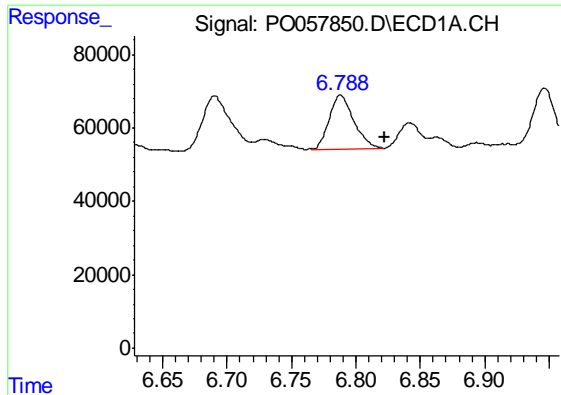
#27 AR-1254-2

R.T.: 6.423 min
 Delta R.T.: -0.034 min
 Response: 146905
 Conc: 47.13 ng/ml m



#27 AR-1254-2

R.T.: 5.540 min
 Delta R.T.: -0.018 min
 Response: 63605
 Conc: 34.17 ng/ml m



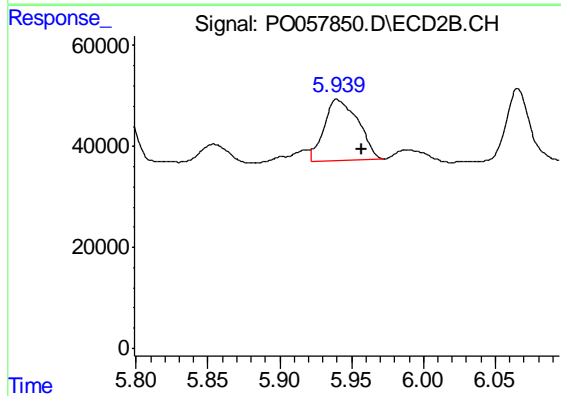
#28 AR-1254-3

R.T.: 6.788 min
 Delta R.T.: -0.035 min
 Response: 194341
 Conc: 58.78 ng/ml m

Instrument :
 ECD_O
 ClientSampleId :
 KY0300F002-SD-190710

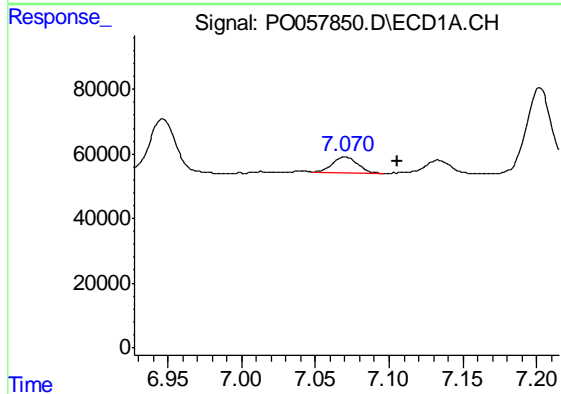
Manual Integrations
 APPROVED

Ankita
 7/12/2019 4:29:00 PM



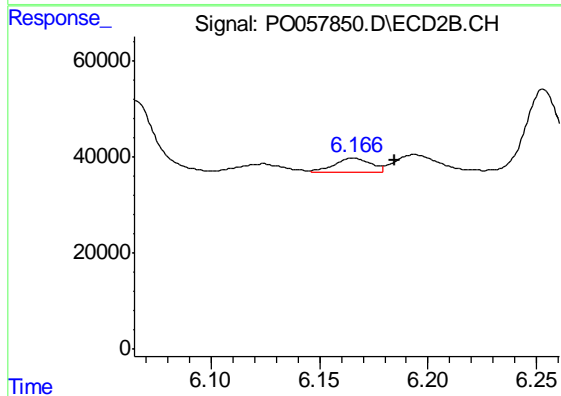
#28 AR-1254-3

R.T.: 5.939 min
 Delta R.T.: -0.018 min
 Response: 201460
 Conc: 66.90 ng/ml m



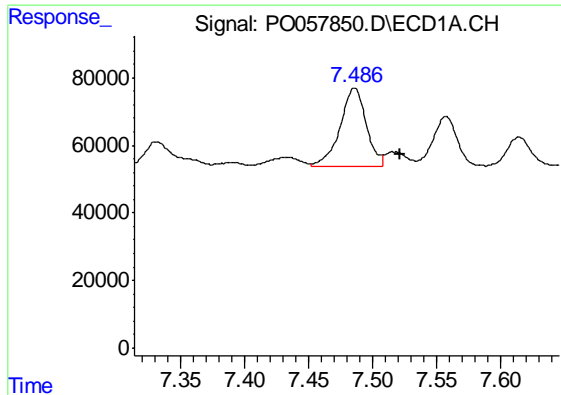
#29 AR-1254-4

R.T.: 7.070 min
 Delta R.T.: -0.036 min
 Response: 62973
 Conc: 23.20 ng/ml m



#29 AR-1254-4

R.T.: 6.166 min
 Delta R.T.: -0.019 min
 Response: 32151
 Conc: 17.86 ng/ml m



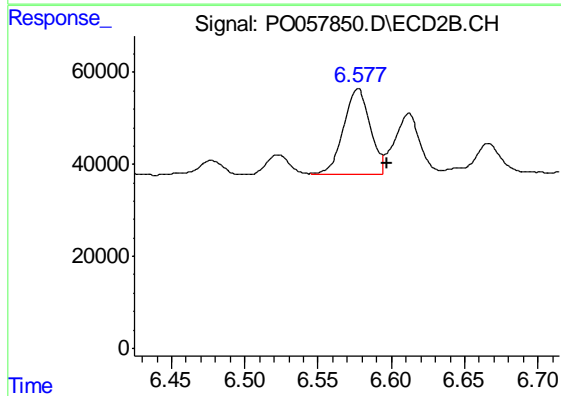
#30 AR-1254-5

R.T.: 7.486 min
 Delta R.T.: -0.035 min
 Response: 325908
 Conc: 116.57 ng/ml

Instrument :
 ECD_O
 ClientSampleId :
 KY0300F002-SD-190710

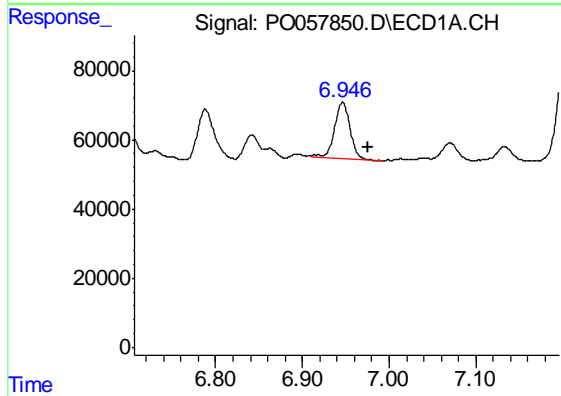
Manual Integrations
 APPROVED

Ankita
 7/12/2019 4:29:00 PM



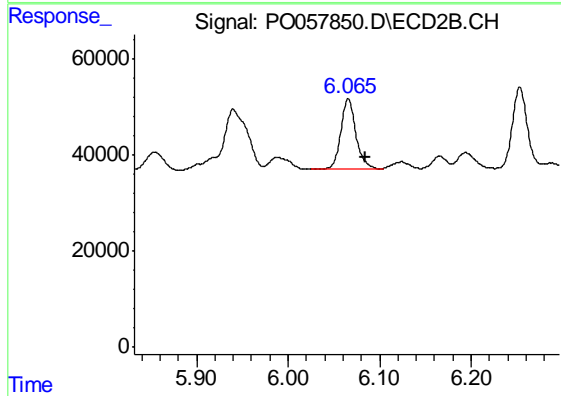
#30 AR-1254-5

R.T.: 6.577 min
 Delta R.T.: -0.020 min
 Response: 234930
 Conc: 86.72 ng/ml m



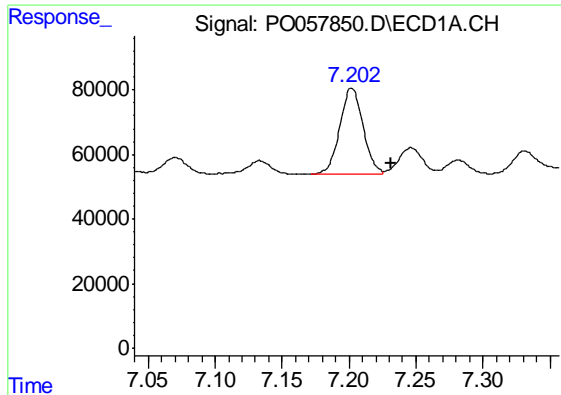
#31 AR-1260-1

R.T.: 6.946 min
 Delta R.T.: -0.029 min
 Response: 200127
 Conc: 72.21 ng/ml



#31 AR-1260-1

R.T.: 6.066 min
 Delta R.T.: -0.018 min
 Response: 166544
 Conc: 77.81 ng/ml



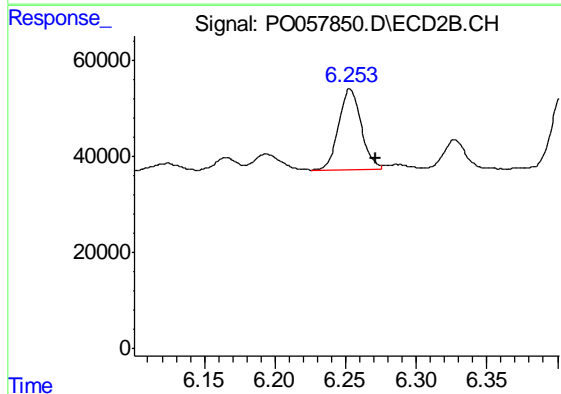
#32 AR-1260-2

R.T.: 7.202 min
 Delta R.T.: -0.030 min
 Response: 324073
 Conc: 87.91 ng/ml m

Instrument :
 ECD_O
 ClientSampleId :
 KY0300F002-SD-190710

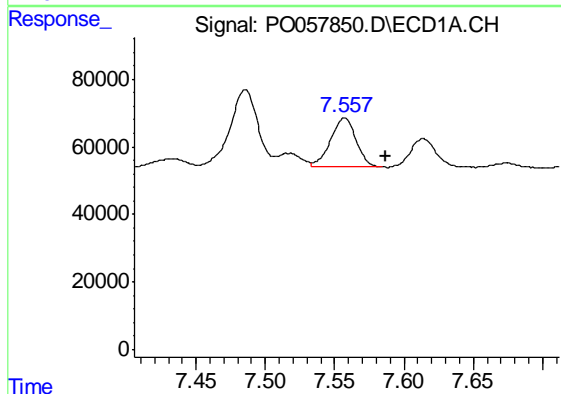
Manual Integrations
 APPROVED

Ankita
 7/12/2019 4:29:00 PM



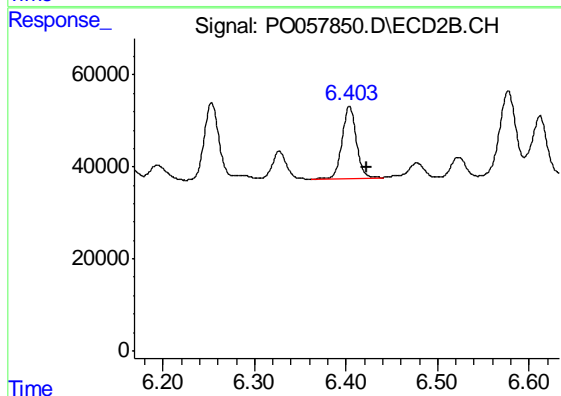
#32 AR-1260-2

R.T.: 6.253 min
 Delta R.T.: -0.019 min
 Response: 188469
 Conc: 68.69 ng/ml m



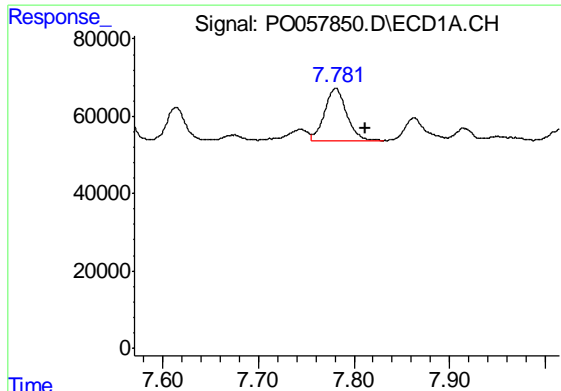
#33 AR-1260-3

R.T.: 7.557 min
 Delta R.T.: -0.030 min
 Response: 186836
 Conc: 61.50 ng/ml m



#33 AR-1260-3

R.T.: 6.404 min
 Delta R.T.: -0.019 min
 Response: 168539
 Conc: 69.03 ng/ml



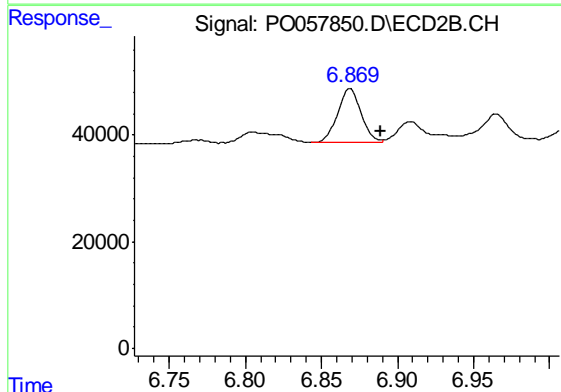
#34 AR-1260-4

R.T.: 7.781 min
 Delta R.T.: -0.031 min
 Response: 214233
 Conc: 70.64 ng/ml

Instrument :
 ECD_O
 ClientSampled :
 KY0300F002-SD-190710

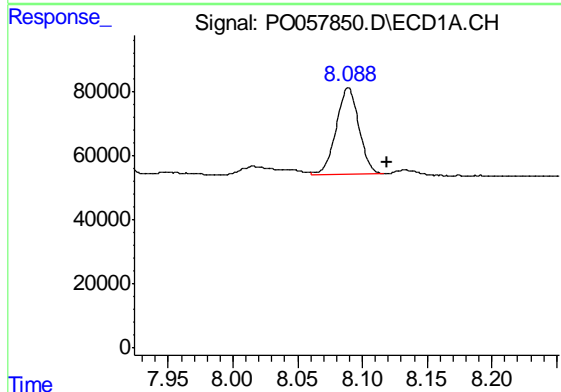
Manual Integrations
 APPROVED

Ankita
 7/12/2019 4:29:00 PM



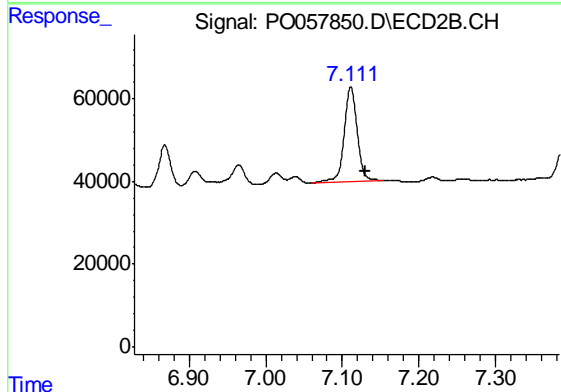
#34 AR-1260-4

R.T.: 6.869 min
 Delta R.T.: -0.020 min
 Response: 114193
 Conc: 54.85 ng/ml m



#35 AR-1260-5

R.T.: 8.088 min
 Delta R.T.: -0.031 min
 Response: 328142
 Conc: 52.47 ng/ml m



#35 AR-1260-5

R.T.: 7.111 min
 Delta R.T.: -0.020 min
 Response: 275252
 Conc: 54.27 ng/ml