

Data Path : Z:\pestpcbsrv\HPCHEM1\ECD_0\Data\P0072419\
 Data File : P0058322.D
 Signal(s) : Signal #1: ECD1A.CH Signal #2: ECD2B.CH
 Acq On : 23 Jul 2019 15:43
 Operator : SM/AJ
 Sample : K3939-11DL 4X
 Misc :
 ALS Vial : 4 Sample Multiplier: 1

Instrument :
 ECD_0
 ClientSampleId :
 S2-02-BDL

Integration File signal 1: autoint1.e
 Integration File signal 2: autoint2.e
 Quant Time: Jul 23 15:57:01 2019
 Quant Method : Z:\pestpcbsrv\HPCHEM1\ECD_0\methods\P0071719.M
 Quant Title : GC EXTRACTABLES
 QLast Update : Wed Jul 17 11:13:08 2019
 Response via : Initial Calibration
 Integrator: ChemStation 6890 Scale Mode: Small noise peaks clipped

Volume Inj. : 2 µl
 Signal #1 Phase : ZB-MR2 Signal #2 Phase: ZB-MR2
 Signal #1 Info : 30Mx0.32mmx 0.50µ Signal #2 Info : 30M x 0.32mm x 0.25µm

Compound	RT#1	RT#2	Resp#1	Resp#2	ng/ml	ng/ml
System Monitoring Compounds						
1) SA Tetrachlo...	4.191	3.531	215914	195937	6.372	6.109
2) SA Decachlor...	9.723	8.427	200765	133480	3.924	3.894
Target Compounds						
3) L1 AR-1016-1	5.347	0.000	66438	0	43.051	N.D. #
4) L1 AR-1016-2	5.398	0.000	22863	0	10.122	N.D. #
5) L1 AR-1016-3	5.431	4.821	19494	66834	13.774	71.195 #
6) L1 AR-1016-4	5.496	4.821	21658	66834	19.016	85.852 #
7) L1 AR-1016-5	5.817	5.031	62398	47833	54.398	46.657
12) L3 AR-1232-2	5.053	0.000	7046	0	15.234	N.D. #
13) L3 AR-1232-3	5.398	4.821	22863	66834	22.955	162.396 #
14) L3 AR-1232-4	5.496	4.861	21658	23517	43.432	64.078 #
15) L3 AR-1232-5	5.616	5.031	78439	47833	208.025	115.561 #
16) L4 AR-1242-1	5.347	0.000	66438	0	54.246	N.D. #
17) L4 AR-1242-2	5.398	0.000	22863	0	12.452	N.D. #
18) L4 AR-1242-3	5.431	4.821	19494	66834	16.788	87.170 #
19) L4 AR-1242-4	5.496	4.861	21658	23517	22.971	30.984 #
20) L4 AR-1242-5	6.255	5.376	123755	371953	106.870	390.353 #
21) L5 AR-1248-1	5.347	0.000	66438	0	71.069	N.D. #
22) L5 AR-1248-2	5.616	4.821	78439	66834	58.213	65.588
23) L5 AR-1248-3	5.817	4.861	62398	23517	40.250	22.372 #
24) L5 AR-1248-4	6.217	5.031	204855	47833	104.633	37.149 #
25) L5 AR-1248-5	6.255	5.417	123755	72092	64.934	57.026
26) L6 AR-1254-1	6.189	5.376	337256	371953	171.615	182.558
27) L6 AR-1254-2	6.404	5.522	755049	490565	230.969	270.714
28) L6 AR-1254-3	6.770	5.920	1138384	988153	322.690	337.434
29) L6 AR-1254-4	7.054	6.146	1317046	769642	445.125	416.554
30) L6 AR-1254-5	7.471	6.557	1994666	1796899	679.557	660.992
31) L7 AR-1260-1	6.930	6.046	715058	571045	285.894	281.970
32) L7 AR-1260-2	7.186	6.233	1373418	734801	390.635	285.734 #
33) L7 AR-1260-3	7.537	6.383	416560	559802	141.871	245.450 #
34) L7 AR-1260-4	7.762	6.848	826156	131327	302.428	67.825 #
35) L7 AR-1260-5	8.075	7.091	476218	315179	82.087	68.479
36) L8 AR-1262-1	7.537	6.625	416560	93604	75.398	23.566 #
37) L8 AR-1262-2	8.075	7.091	476218	315179	56.001	48.795
38) L8 AR-1262-3	8.382	7.395	227986	19290	40.502	6.998 #
39) L8 AR-1262-4	8.428	7.432	55064	286532	12.069	60.010 #
40) L8 AR-1262-5	9.054	7.925	46827	39810	16.853	20.016
41) L9 AR-1268-1	8.382	7.395	227986	19290	22.171	2.471 #
42) L9 AR-1268-2	8.428	7.432	55064	286532	6.012	40.215 #
44) L9 AR-1268-4	9.054	7.925	46827	39810	15.803	19.031
45) L9 AR-1268-5	0.000	8.197	0	22474	N.D.	1.348 #

Data Path : Z:\pestpcbsrv\HPCHEM1\ECD_0\Data\P0072419\
Data File : P0058322.D
Signal(s) : Signal #1: ECD1A.CH Signal #2: ECD2B.CH
Acq On : 23 Jul 2019 15:43
Operator : SM/AJ
Sample : K3939-11DL 4X
Misc :
ALS Vial : 4 Sample Multiplier: 1

Instrument :
ECD_O
ClientSampleId :
S2-02-BDL

Integration File signal 1: autoint1.e
Integration File signal 2: autoint2.e
Quant Time: Jul 23 15:57:01 2019
Quant Method : Z:\pestpcbsrv\HPCHEM1\ECD_0\methods\P0071719.M
Quant Title : GC EXTRACTABLES
QLast Update : Wed Jul 17 11:13:08 2019
Response via : Initial Calibration
Integrator: ChemStation 6890 Scale Mode: Small noise peaks clipped

Volume Inj. : 2 µl
Signal #1 Phase : ZB-MR1 Signal #2 Phase: ZB-MR2
Signal #1 Info : 30Mx0.32mmx 0.50µ Signal #2 Info : 30M x 0.32mm x 0.25µm

Compound	RT#1	RT#2	Resp#1	Resp#2	ng/ml	ng/ml
----------	------	------	--------	--------	-------	-------

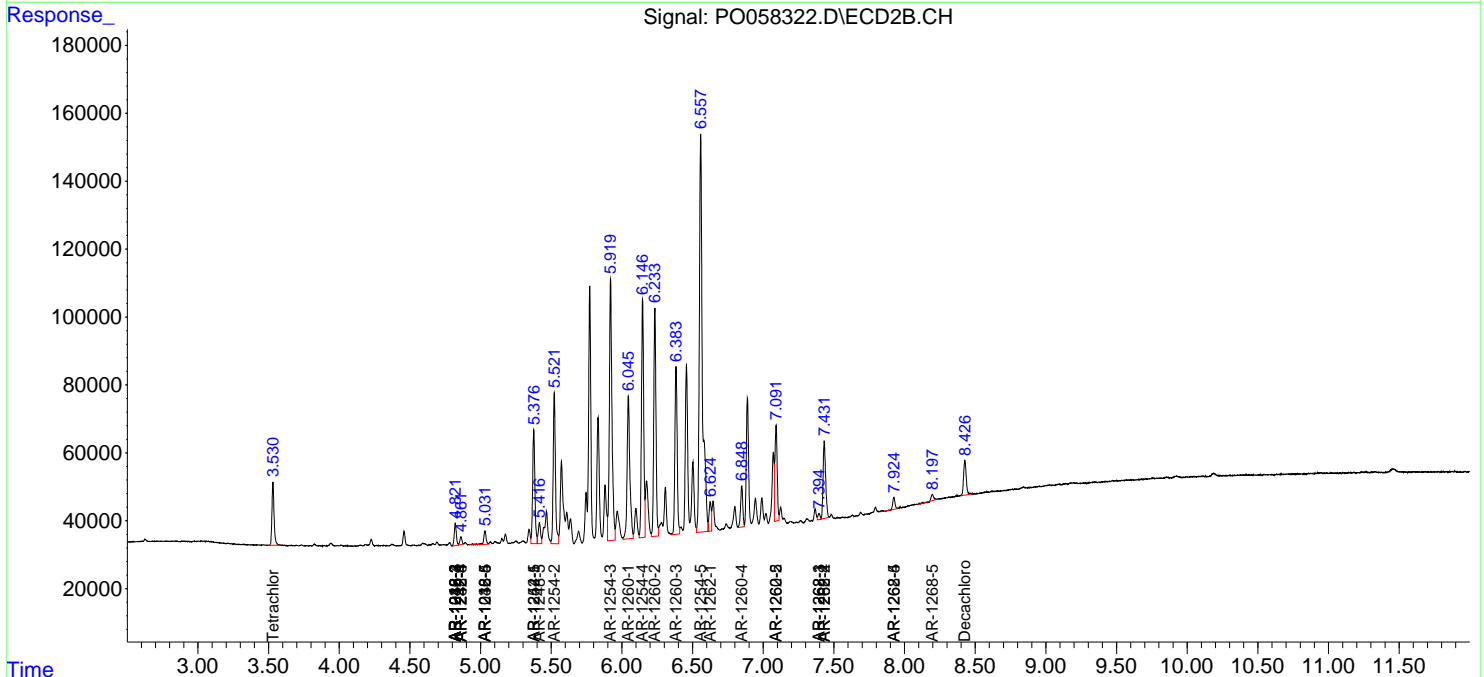
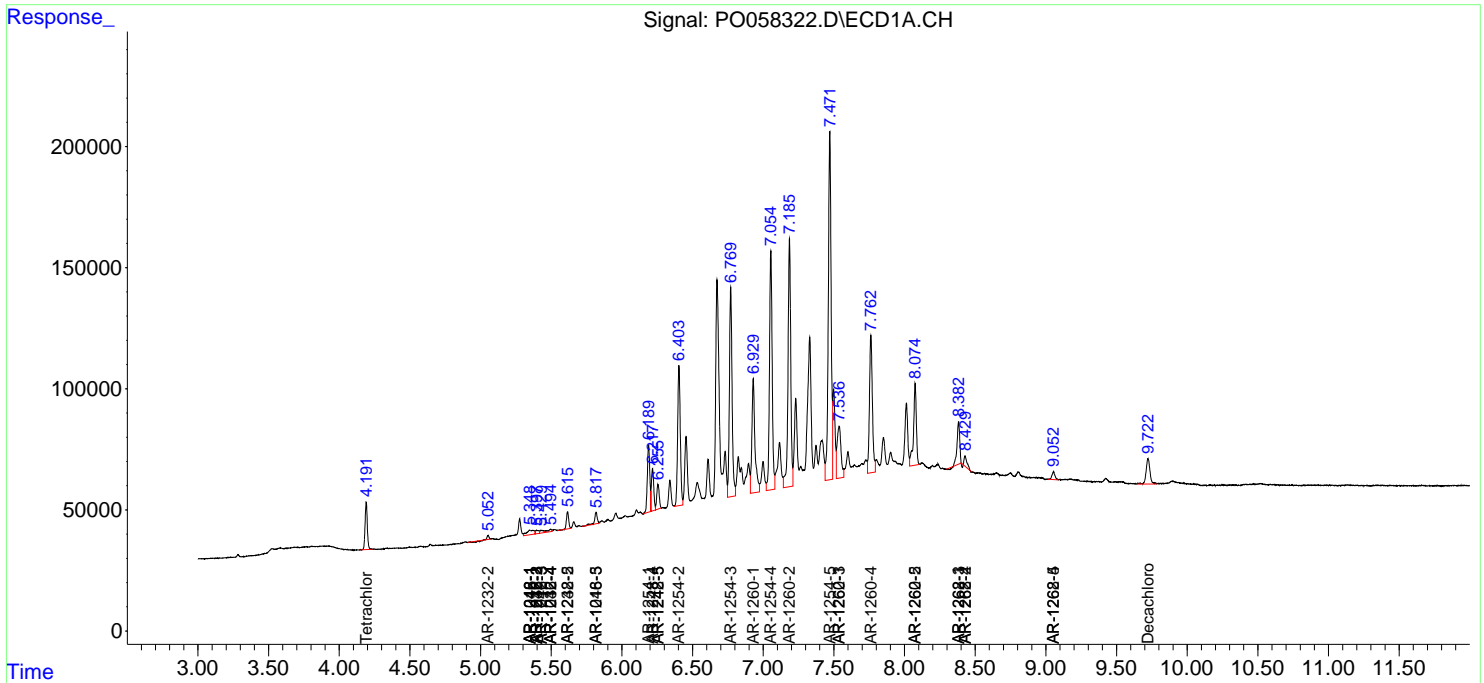
(f)=RT Delta > 1/2 Window (#)=Amounts differ by > 25% (m)=manual int.

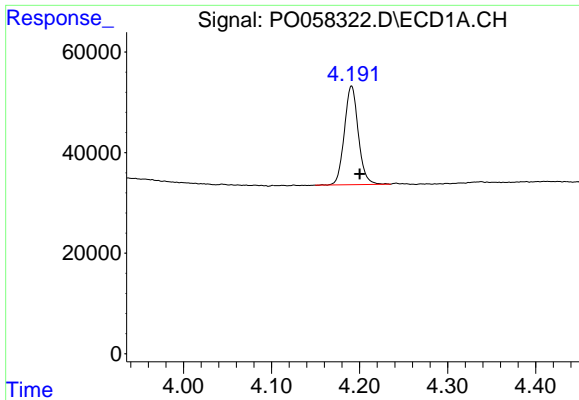
Data Path : Z:\pestpcbsrv\HPCHEM1\ECD_0\Data\P0072419\
 Data File : P0058322.D
 Signal(s) : Signal #1: ECD1A.CH Signal #2: ECD2B.CH
 Acq On : 23 Jul 2019 15:43
 Operator : SM/AJ
 Sample : K3939-11DL 4X
 Misc :
 ALS Vial : 4 Sample Multiplier: 1

Instrument :
 ECD_O
 ClientSampled :
 S2-02-BDL

Integration File signal 1: autoint1.e
 Integration File signal 2: autoint2.e
 Quant Time: Jul 23 15:57:01 2019
 Quant Method : Z:\pestpcbsrv\HPCHEM1\ECD_0\methods\P0071719.M
 Quant Title : GC EXTRACTABLES
 QLast Update : Wed Jul 17 11:13:08 2019
 Response via : Initial Calibration
 Integrator: ChemStation 6890 Scale Mode: Small noise peaks clipped

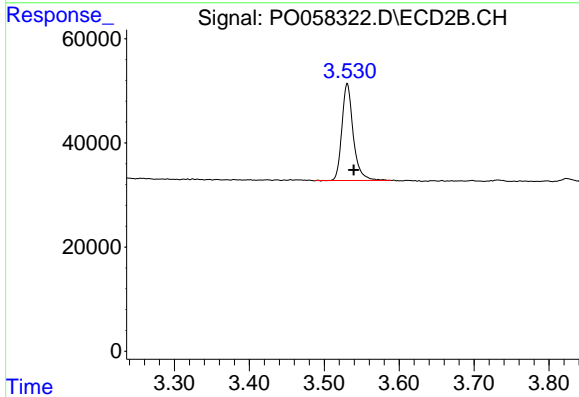
Volume Inj. : 2 µl
 Signal #1 Phase : ZB-MR1 Signal #2 Phase: ZB-MR2
 Signal #1 Info : 30Mx0.32mmx 0.50µ Signal #2 Info : 30M x 0.32mm x 0.25µm



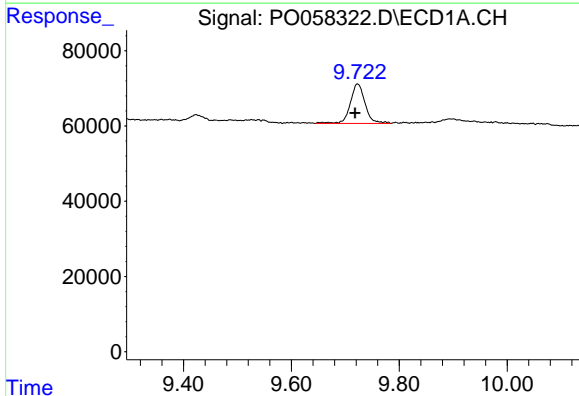


#1 Tetrachloro-m-xylene
 R.T.: 4.191 min
 Delta R.T.: -0.009 min
 Response: 215914
 Conc: 6.37 ng/ml

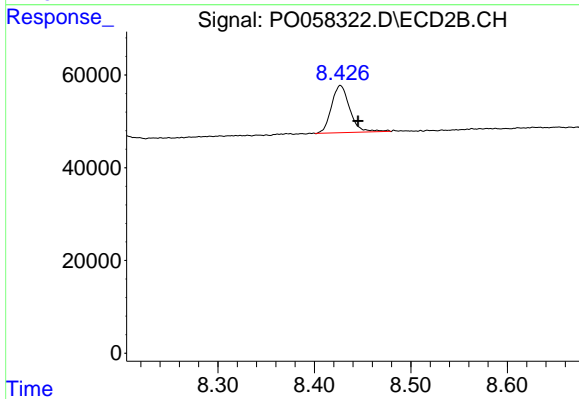
Instrument :
 ECD_O
 ClientSampleId :
 S2-02-BDL



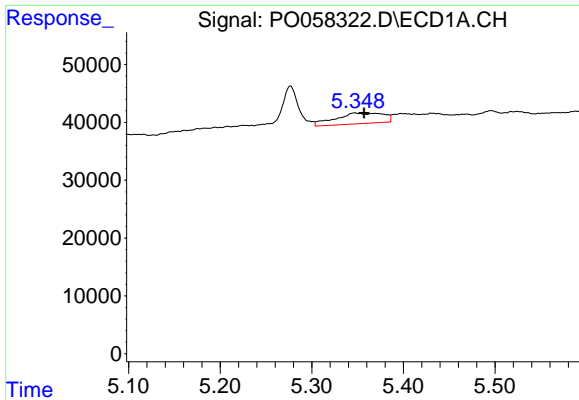
#1 Tetrachloro-m-xylene
 R.T.: 3.531 min
 Delta R.T.: -0.009 min
 Response: 195937
 Conc: 6.11 ng/ml



#2 Decachlorobiphenyl
 R.T.: 9.723 min
 Delta R.T.: 0.005 min
 Response: 200765
 Conc: 3.92 ng/ml

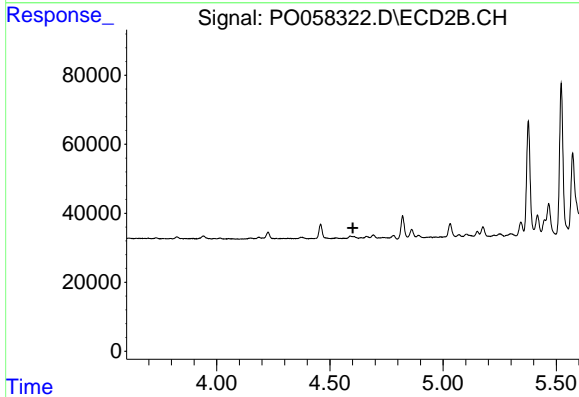


#2 Decachlorobiphenyl
 R.T.: 8.427 min
 Delta R.T.: -0.018 min
 Response: 133480
 Conc: 3.89 ng/ml

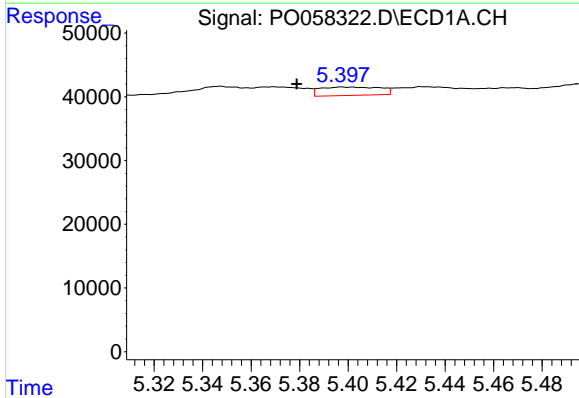


#3 AR-1016-1
 R.T.: 5.347 min
 Delta R.T.: -0.010 min
 Response: 66438
 Conc: 43.05 ng/ml

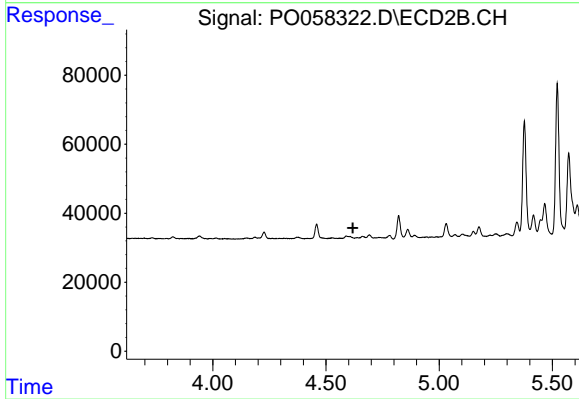
Instrument :
 ECD_O
 ClientSampled :
 S2-02-BDL



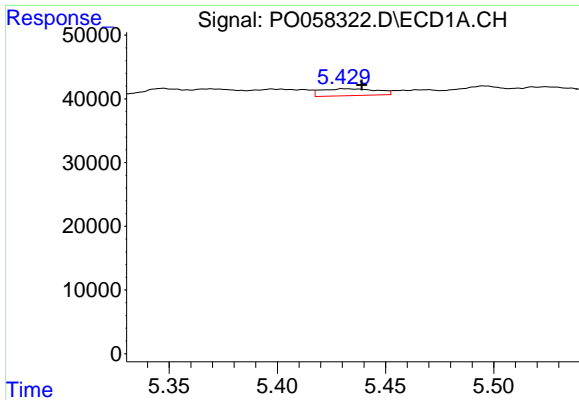
#3 AR-1016-1
 R.T.: 0.000 min
 Exp R.T. : 4.601 min
 Response: 0
 Conc: N.D.



#4 AR-1016-2
 R.T.: 5.398 min
 Delta R.T.: 0.019 min
 Response: 22863
 Conc: 10.12 ng/ml

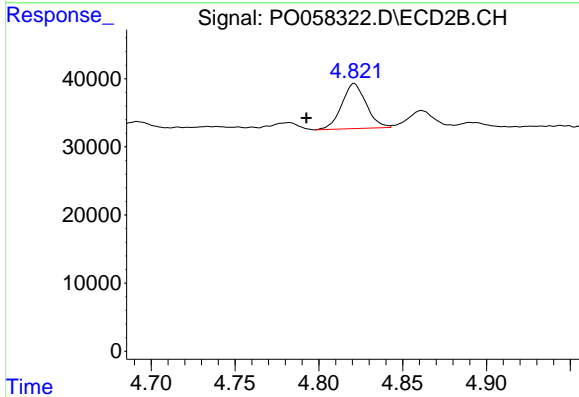


#4 AR-1016-2
 R.T.: 0.000 min
 Exp R.T. : 4.619 min
 Response: 0
 Conc: N.D.

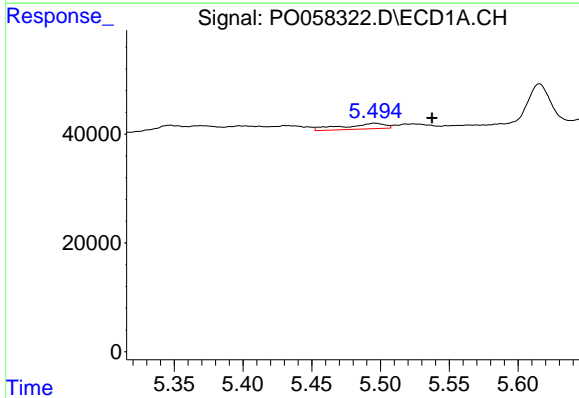


#5 AR-1016-3
 R.T.: 5.431 min
 Delta R.T.: -0.008 min
 Response: 19494
 Conc: 13.77 ng/ml

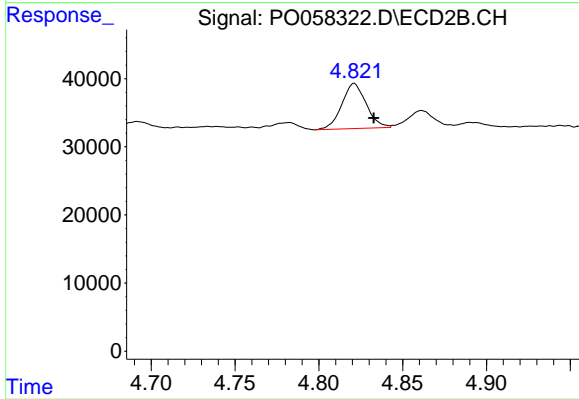
Instrument :
 ECD_O
 ClientSampleId :
 S2-02-BDL



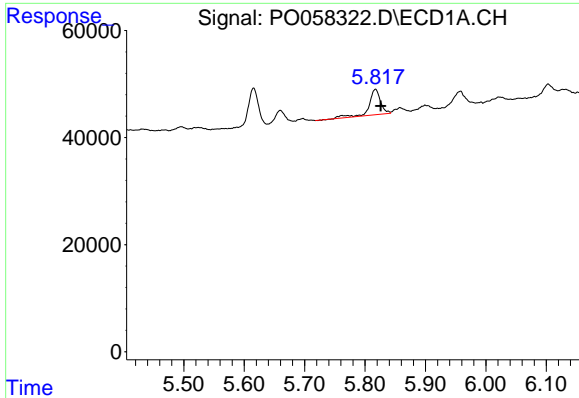
#5 AR-1016-3
 R.T.: 4.821 min
 Delta R.T.: 0.028 min
 Response: 66834
 Conc: 71.19 ng/ml



#6 AR-1016-4
 R.T.: 5.496 min
 Delta R.T.: -0.042 min
 Response: 21658
 Conc: 19.02 ng/ml

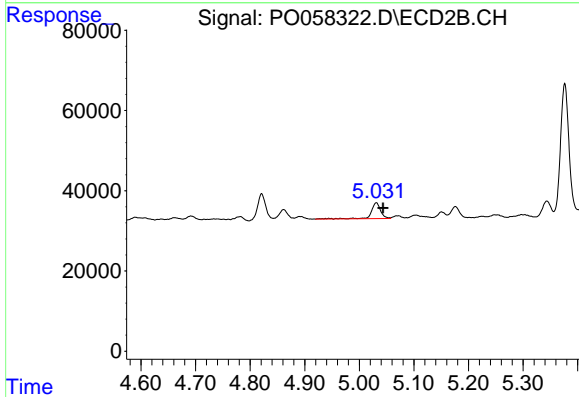


#6 AR-1016-4
 R.T.: 4.821 min
 Delta R.T.: -0.012 min
 Response: 66834
 Conc: 85.85 ng/ml

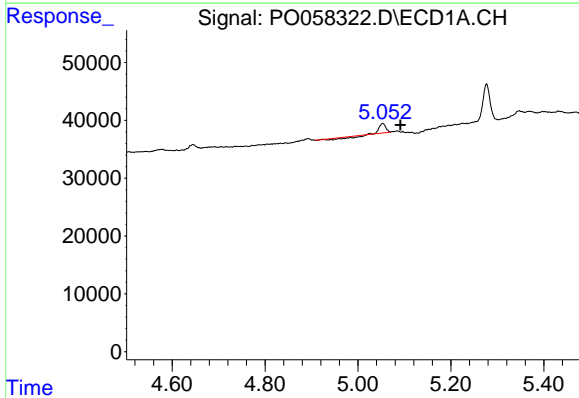


#7 AR-1016-5
 R.T.: 5.817 min
 Delta R.T.: -0.009 min
 Response: 62398
 Conc: 54.40 ng/ml

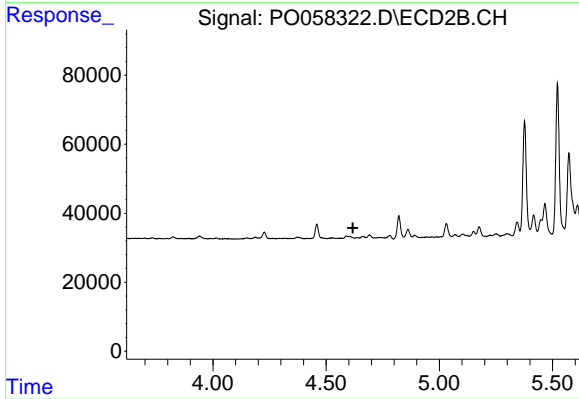
Instrument :
 ECD_O
ClientSampled :
 S2-02-BDL



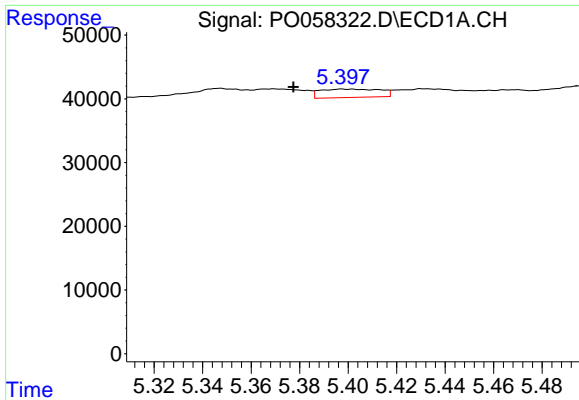
#7 AR-1016-5
 R.T.: 5.031 min
 Delta R.T.: -0.012 min
 Response: 47833
 Conc: 46.66 ng/ml



#12 AR-1232-2
 R.T.: 5.053 min
 Delta R.T.: -0.038 min
 Response: 7046
 Conc: 15.23 ng/ml

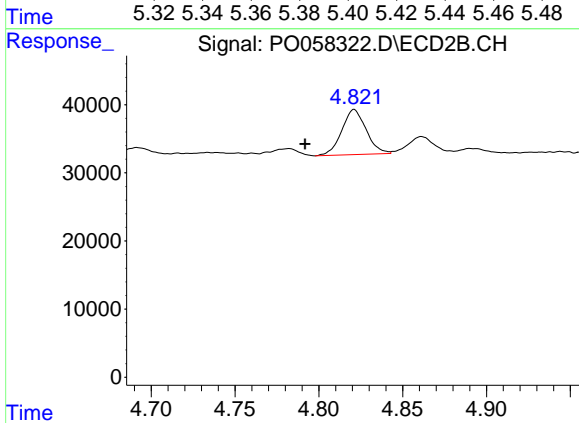


#12 AR-1232-2
 R.T.: 0.000 min
 Exp R.T. : 4.619 min
 Response: 0
 Conc: N.D.

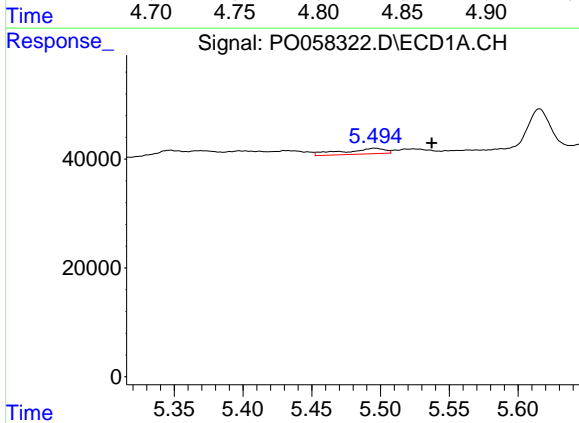


#13 AR-1232-3
 R.T.: 5.398 min
 Delta R.T.: 0.020 min
 Response: 22863
 Conc: 22.96 ng/ml

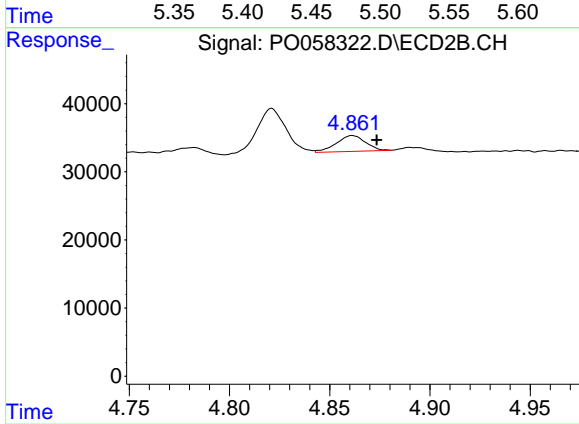
Instrument :
 ECD_O
ClientSampleId :
 S2-02-BDL



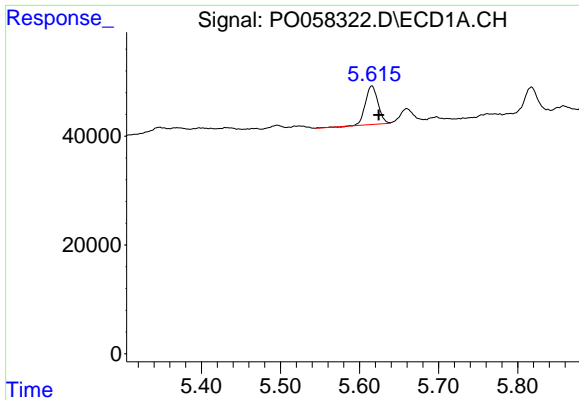
#13 AR-1232-3
 R.T.: 4.821 min
 Delta R.T.: 0.029 min
 Response: 66834
 Conc: 162.40 ng/ml



#14 AR-1232-4
 R.T.: 5.496 min
 Delta R.T.: -0.041 min
 Response: 21658
 Conc: 43.43 ng/ml



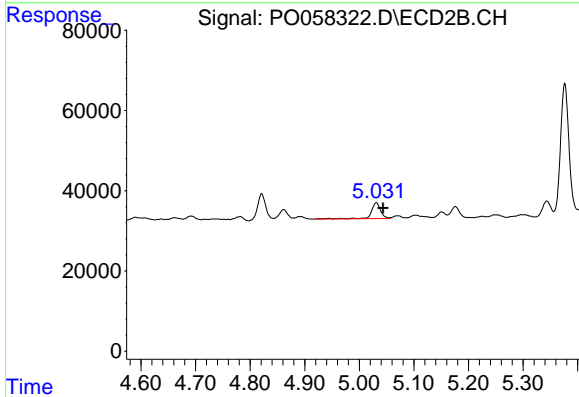
#14 AR-1232-4
 R.T.: 4.861 min
 Delta R.T.: -0.012 min
 Response: 23517
 Conc: 64.08 ng/ml



#15 AR-1232-5

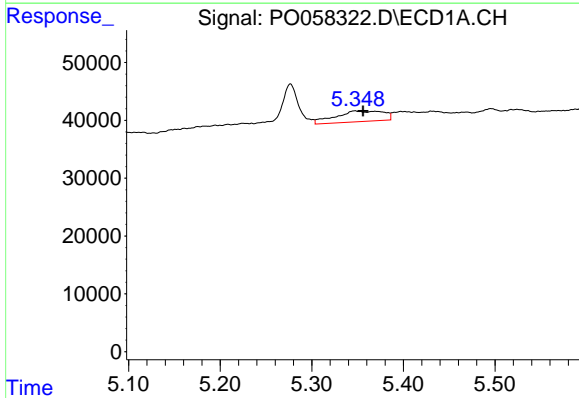
R.T.: 5.616 min
 Delta R.T.: -0.009 min
 Response: 78439
 Conc: 208.02 ng/ml

Instrument :
 ECD_O
ClientSampled :
 S2-02-BDL



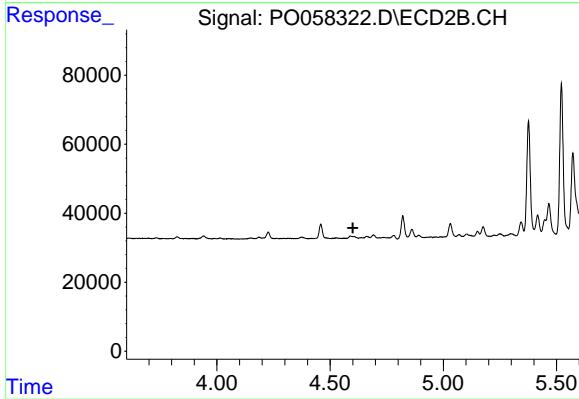
#15 AR-1232-5

R.T.: 5.031 min
 Delta R.T.: -0.012 min
 Response: 47833
 Conc: 115.56 ng/ml



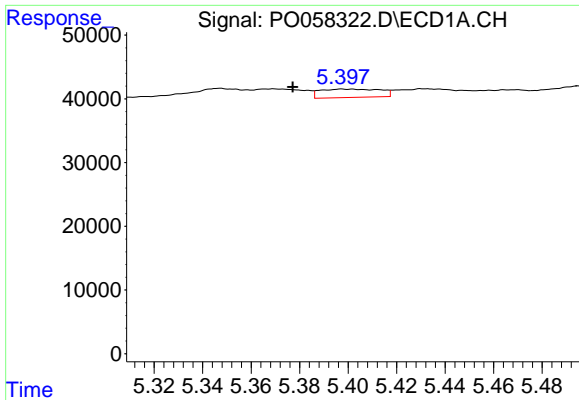
#16 AR-1242-1

R.T.: 5.347 min
 Delta R.T.: -0.009 min
 Response: 66438
 Conc: 54.25 ng/ml



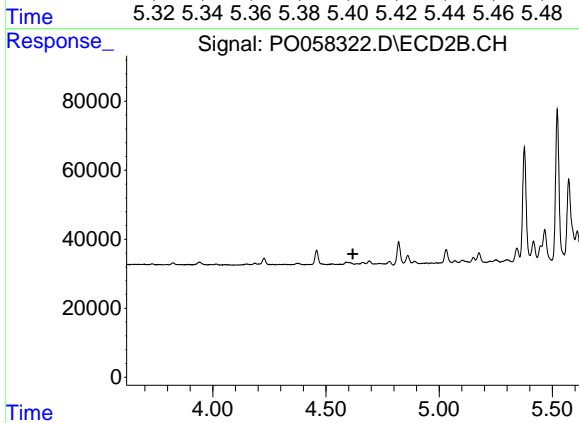
#16 AR-1242-1

R.T.: 0.000 min
 Exp R.T. : 4.601 min
 Response: 0
 Conc: N.D.

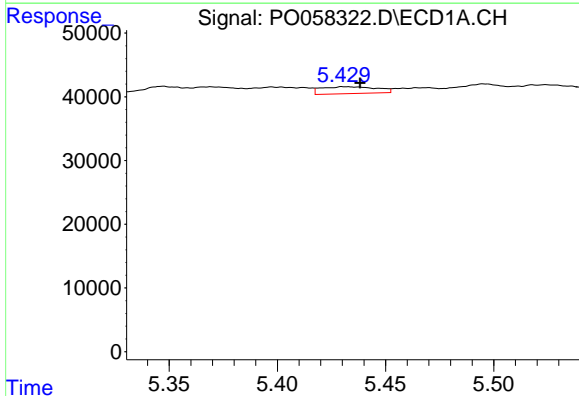


#17 AR-1242-2
 R.T.: 5.398 min
 Delta R.T.: 0.020 min
 Response: 22863
 Conc: 12.45 ng/ml

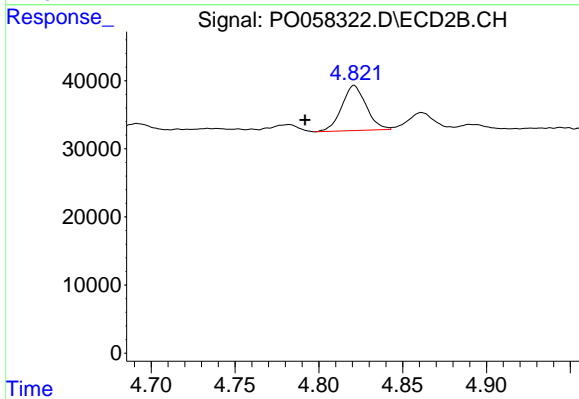
Instrument :
 ECD_O
ClientSampled :
 S2-02-BDL



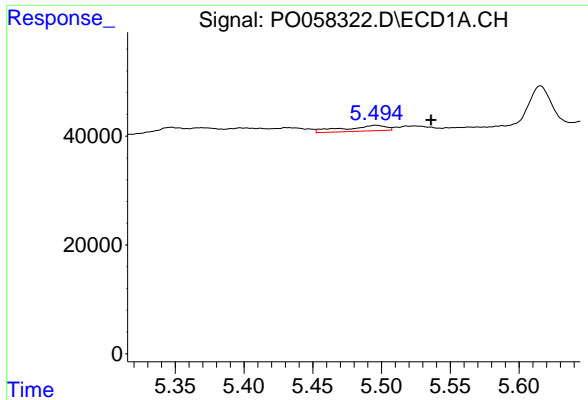
#17 AR-1242-2
 R.T.: 0.000 min
 Exp R.T. : 4.619 min
 Response: 0
 Conc: N.D.



#18 AR-1242-3
 R.T.: 5.431 min
 Delta R.T.: -0.007 min
 Response: 19494
 Conc: 16.79 ng/ml



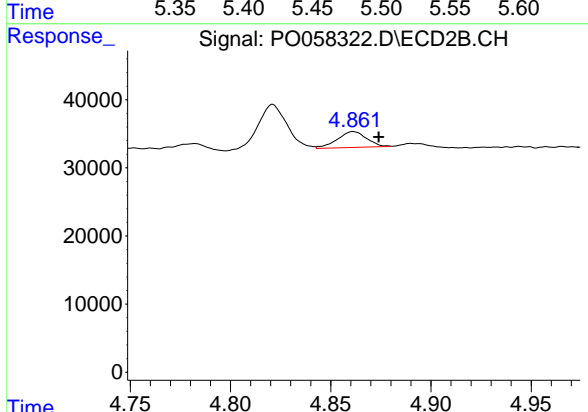
#18 AR-1242-3
 R.T.: 4.821 min
 Delta R.T.: 0.029 min
 Response: 66834
 Conc: 87.17 ng/ml



#19 AR-1242-4

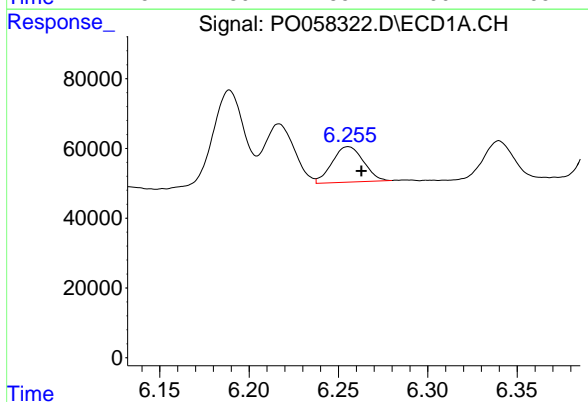
R.T.: 5.496 min
 Delta R.T.: -0.040 min
 Response: 21658
 Conc: 22.97 ng/ml

Instrument :
 ECD_O
ClientSampled :
 S2-02-BDL



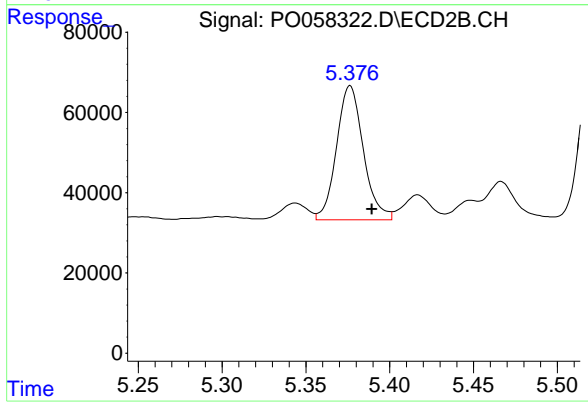
#19 AR-1242-4

R.T.: 4.861 min
 Delta R.T.: -0.013 min
 Response: 23517
 Conc: 30.98 ng/ml



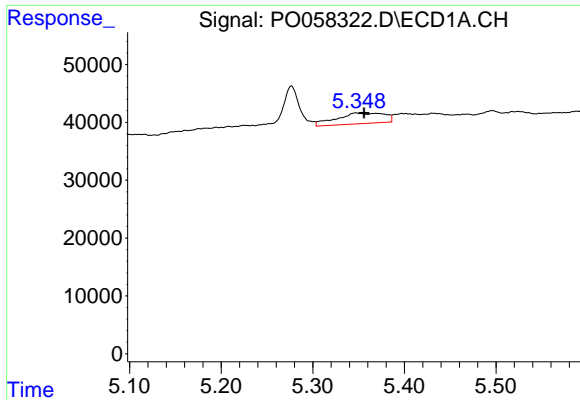
#20 AR-1242-5

R.T.: 6.255 min
 Delta R.T.: -0.007 min
 Response: 123755
 Conc: 106.87 ng/ml



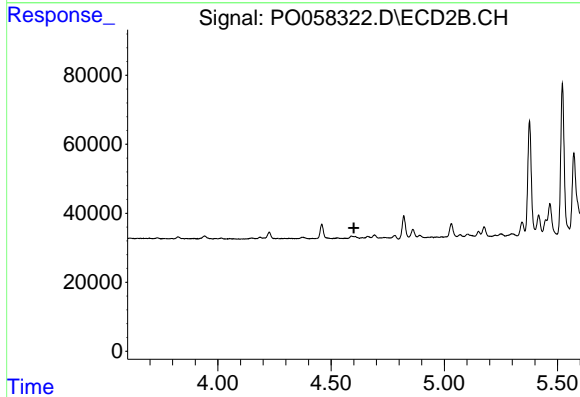
#20 AR-1242-5

R.T.: 5.376 min
 Delta R.T.: -0.013 min
 Response: 371953
 Conc: 390.35 ng/ml

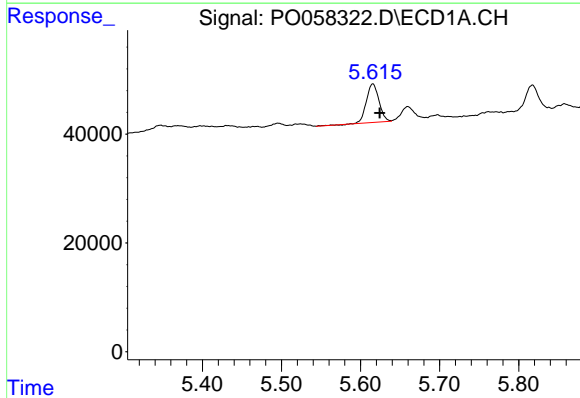


#21 AR-1248-1
 R.T.: 5.347 min
 Delta R.T.: -0.009 min
 Response: 66438
 Conc: 71.07 ng/ml

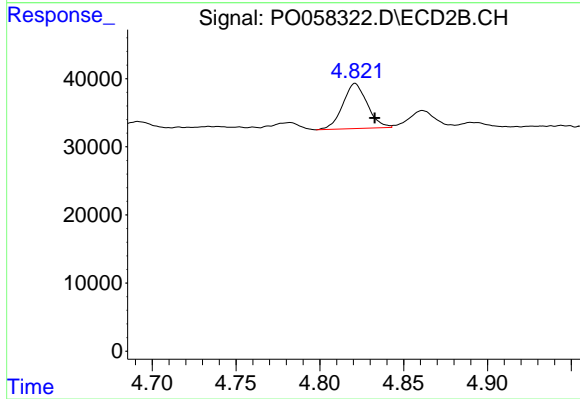
Instrument :
 ECD_O
 ClientSampled :
 S2-02-BDL



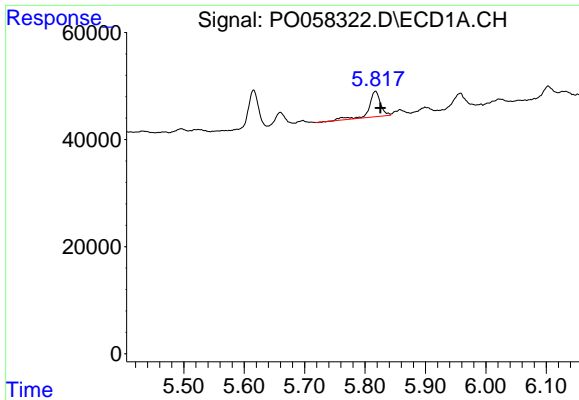
#21 AR-1248-1
 R.T.: 0.000 min
 Exp R.T. : 4.601 min
 Response: 0
 Conc: N.D.



#22 AR-1248-2
 R.T.: 5.616 min
 Delta R.T.: -0.009 min
 Response: 78439
 Conc: 58.21 ng/ml

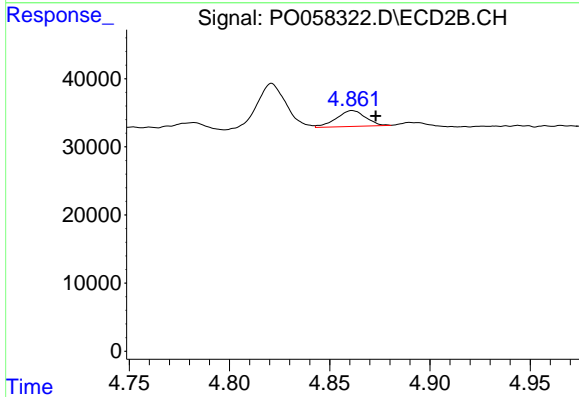


#22 AR-1248-2
 R.T.: 4.821 min
 Delta R.T.: -0.012 min
 Response: 66834
 Conc: 65.59 ng/ml

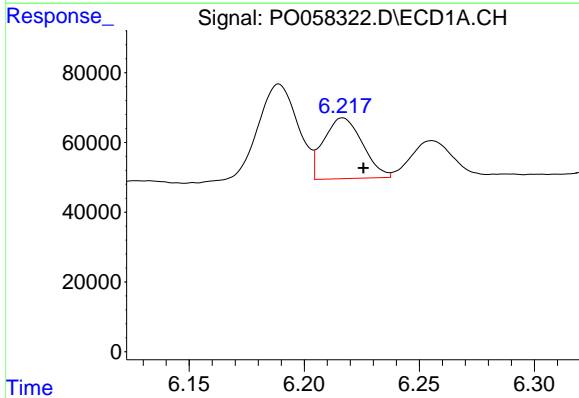


#23 AR-1248-3
 R.T.: 5.817 min
 Delta R.T.: -0.008 min
 Response: 62398
 Conc: 40.25 ng/ml

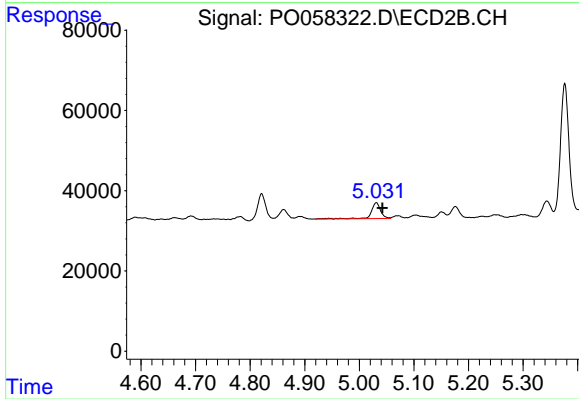
Instrument :
 ECD_O
ClientSampled :
 S2-02-BDL



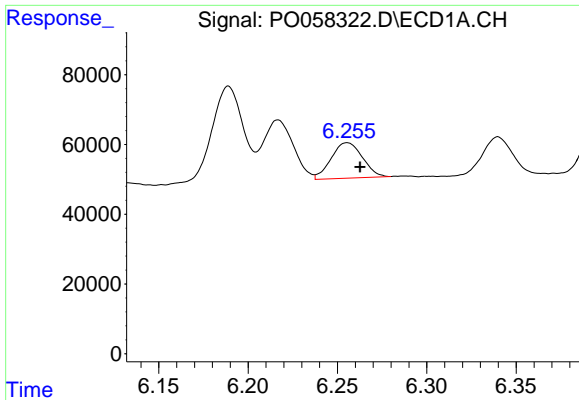
#23 AR-1248-3
 R.T.: 4.861 min
 Delta R.T.: -0.012 min
 Response: 23517
 Conc: 22.37 ng/ml



#24 AR-1248-4
 R.T.: 6.217 min
 Delta R.T.: -0.009 min
 Response: 204855
 Conc: 104.63 ng/ml



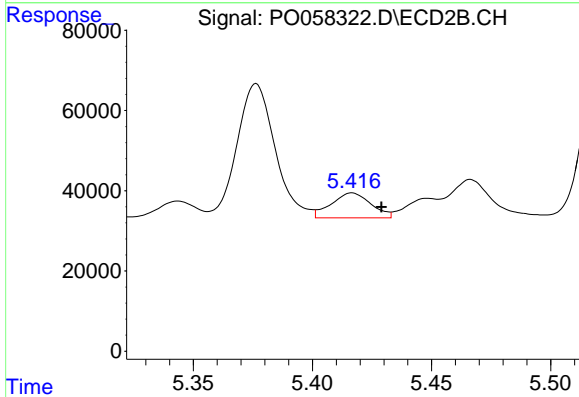
#24 AR-1248-4
 R.T.: 5.031 min
 Delta R.T.: -0.011 min
 Response: 47833
 Conc: 37.15 ng/ml



#25 AR-1248-5

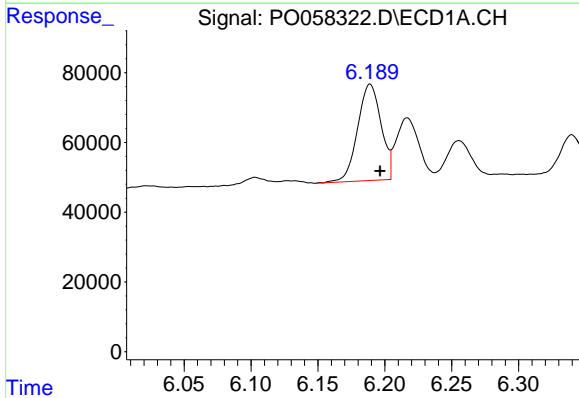
R.T.: 6.255 min
 Delta R.T.: -0.007 min
 Response: 123755
 Conc: 64.93 ng/ml

Instrument :
 ECD_O
ClientSampled :
 S2-02-BDL



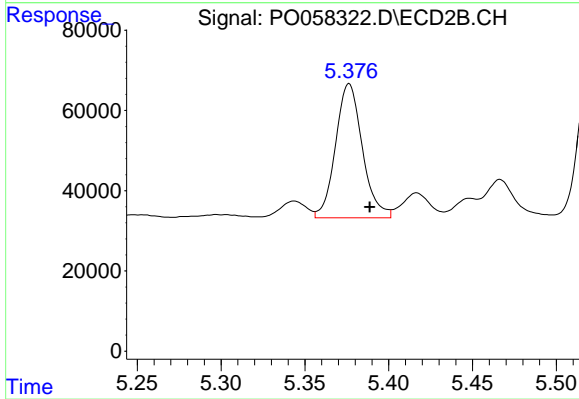
#25 AR-1248-5

R.T.: 5.417 min
 Delta R.T.: -0.012 min
 Response: 72092
 Conc: 57.03 ng/ml



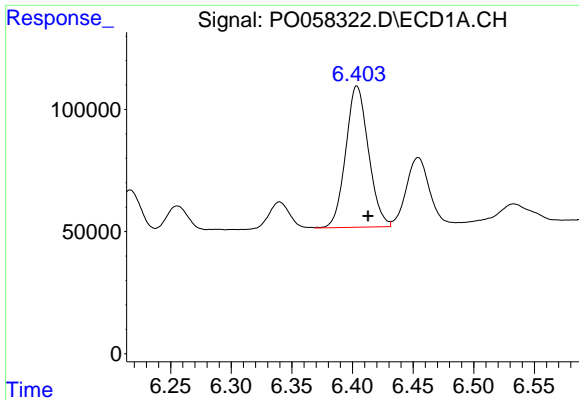
#26 AR-1254-1

R.T.: 6.189 min
 Delta R.T.: -0.007 min
 Response: 337256
 Conc: 171.61 ng/ml



#26 AR-1254-1

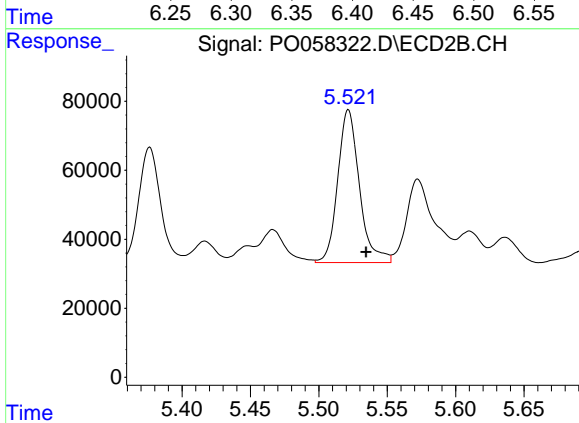
R.T.: 5.376 min
 Delta R.T.: -0.012 min
 Response: 371953
 Conc: 182.56 ng/ml



#27 AR-1254-2

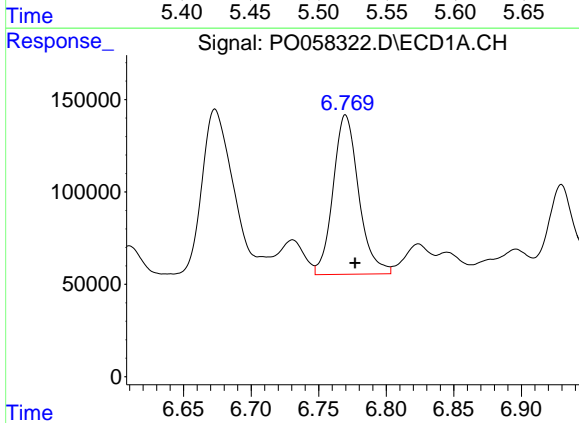
R.T.: 6.404 min
 Delta R.T.: -0.009 min
 Response: 755049
 Conc: 230.97 ng/ml

Instrument :
 ECD_O
 ClientSampled :
 S2-02-BDL



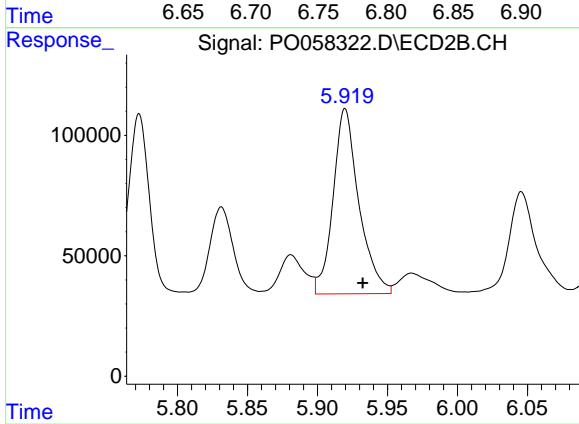
#27 AR-1254-2

R.T.: 5.522 min
 Delta R.T.: -0.013 min
 Response: 490565
 Conc: 270.71 ng/ml



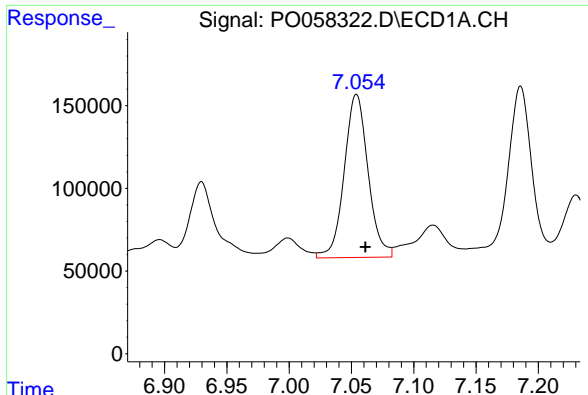
#28 AR-1254-3

R.T.: 6.770 min
 Delta R.T.: -0.007 min
 Response: 1138384
 Conc: 322.69 ng/ml



#28 AR-1254-3

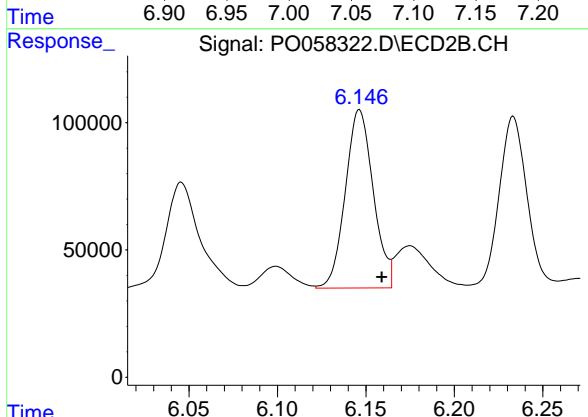
R.T.: 5.920 min
 Delta R.T.: -0.013 min
 Response: 988153
 Conc: 337.43 ng/ml



#29 AR-1254-4

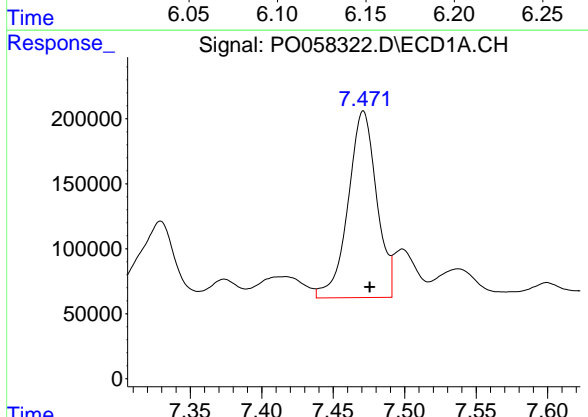
R.T.: 7.054 min
 Delta R.T.: -0.007 min
 Response: 1317046
 Conc: 445.12 ng/ml

Instrument :
 ECD_O
 ClientSampled :
 S2-02-BDL



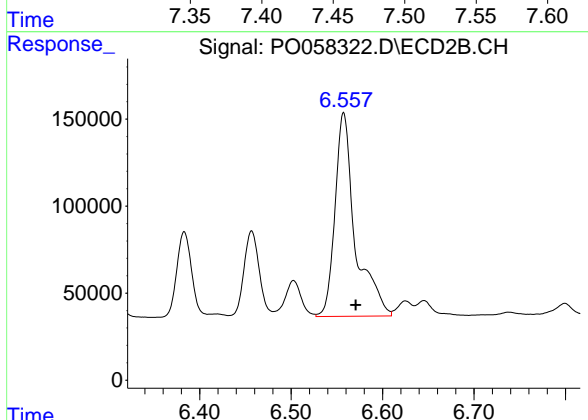
#29 AR-1254-4

R.T.: 6.146 min
 Delta R.T.: -0.013 min
 Response: 769642
 Conc: 416.55 ng/ml



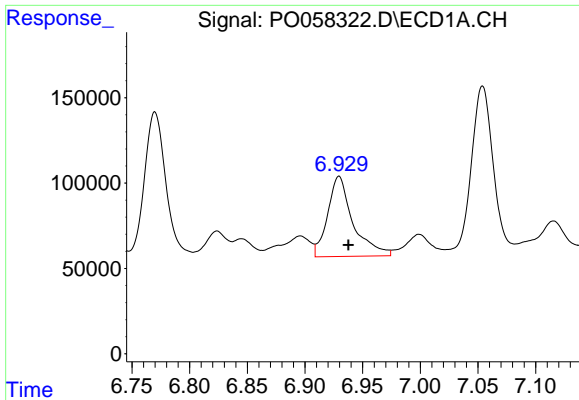
#30 AR-1254-5

R.T.: 7.471 min
 Delta R.T.: -0.005 min
 Response: 1994666
 Conc: 679.56 ng/ml



#30 AR-1254-5

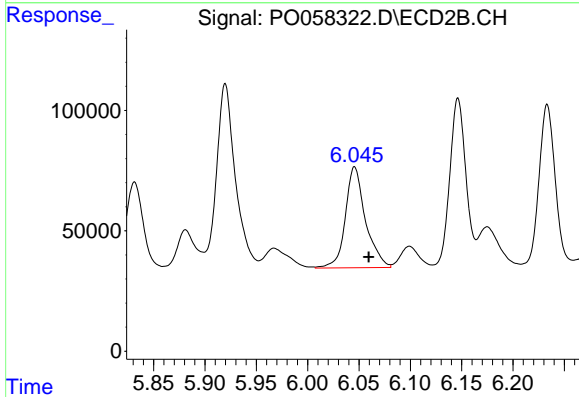
R.T.: 6.557 min
 Delta R.T.: -0.013 min
 Response: 1796899
 Conc: 660.99 ng/ml



#31 AR-1260-1

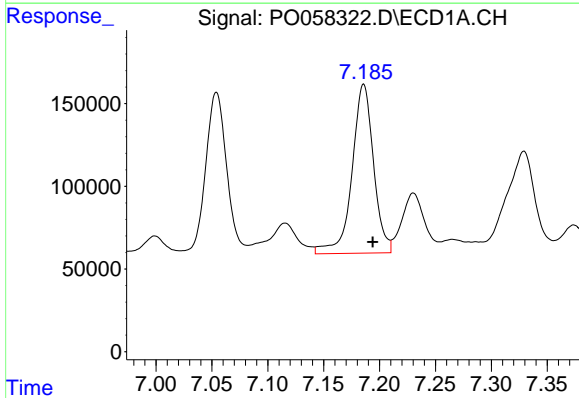
R.T.: 6.930 min
 Delta R.T.: -0.008 min
 Response: 715058
 Conc: 285.89 ng/ml

Instrument :
 ECD_O
 ClientSampled :
 S2-02-BDL



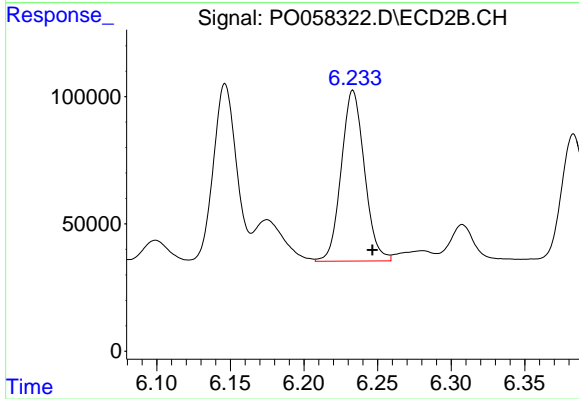
#31 AR-1260-1

R.T.: 6.046 min
 Delta R.T.: -0.014 min
 Response: 571045
 Conc: 281.97 ng/ml



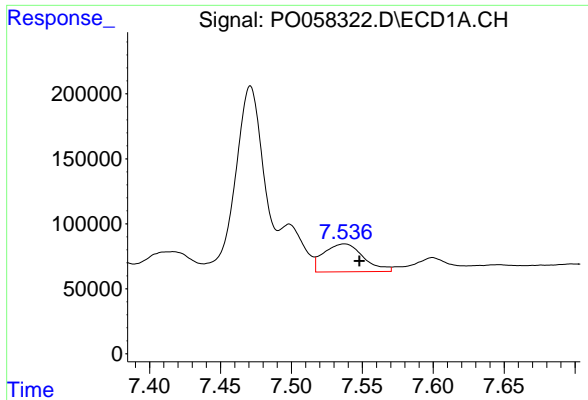
#32 AR-1260-2

R.T.: 7.186 min
 Delta R.T.: -0.008 min
 Response: 1373418
 Conc: 390.63 ng/ml



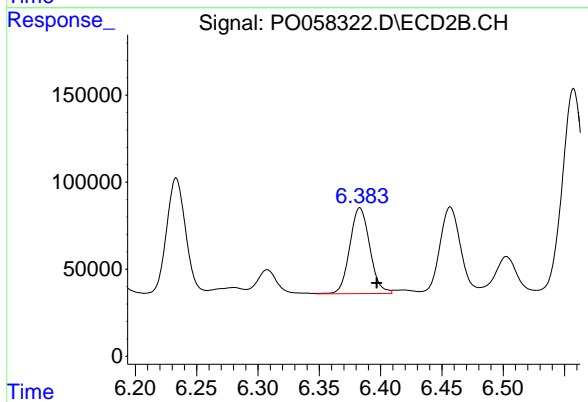
#32 AR-1260-2

R.T.: 6.233 min
 Delta R.T.: -0.013 min
 Response: 734801
 Conc: 285.73 ng/ml

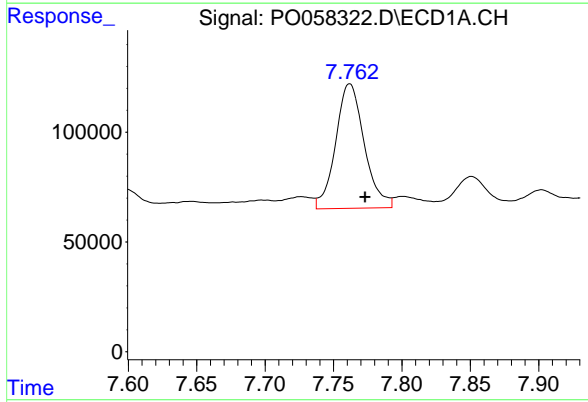


#33 AR-1260-3
 R.T.: 7.537 min
 Delta R.T.: -0.011 min
 Response: 416560
 Conc: 141.87 ng/ml

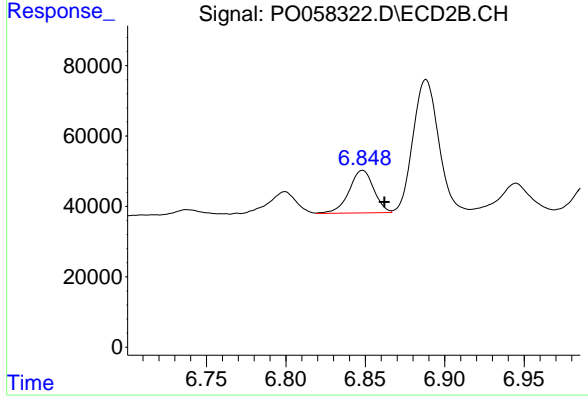
Instrument :
 ECD_O
 ClientSampleId :
 S2-02-BDL



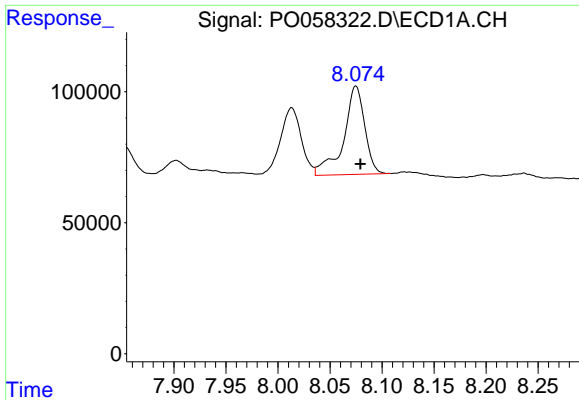
#33 AR-1260-3
 R.T.: 6.383 min
 Delta R.T.: -0.014 min
 Response: 559802
 Conc: 245.45 ng/ml



#34 AR-1260-4
 R.T.: 7.762 min
 Delta R.T.: -0.011 min
 Response: 826156
 Conc: 302.43 ng/ml

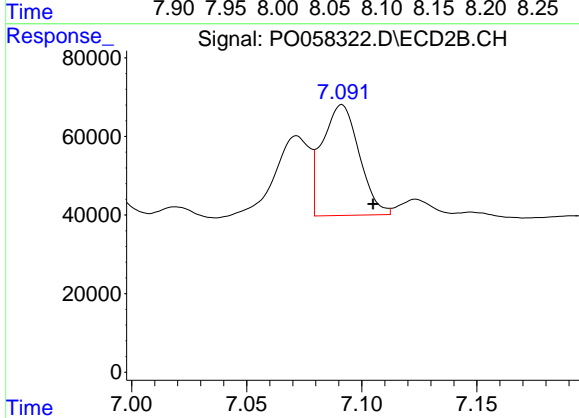


#34 AR-1260-4
 R.T.: 6.848 min
 Delta R.T.: -0.014 min
 Response: 131327
 Conc: 67.83 ng/ml

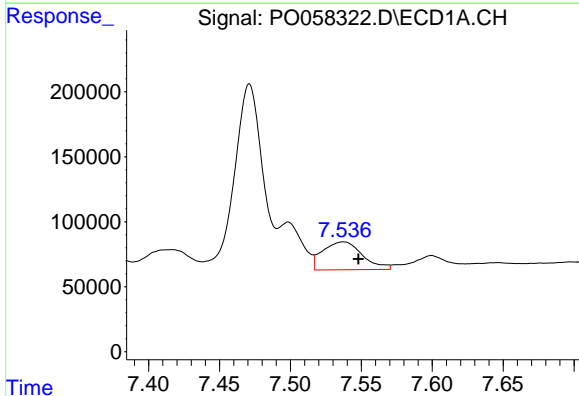


#35 AR-1260-5
 R.T.: 8.075 min
 Delta R.T.: -0.004 min
 Response: 476218
 Conc: 82.09 ng/ml

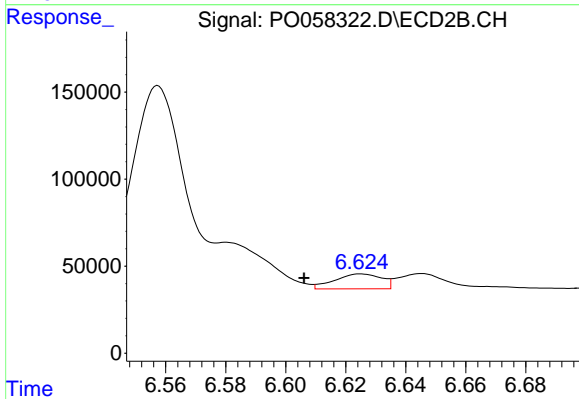
Instrument :
 ECD_O
 ClientSampleId :
 S2-02-BDL



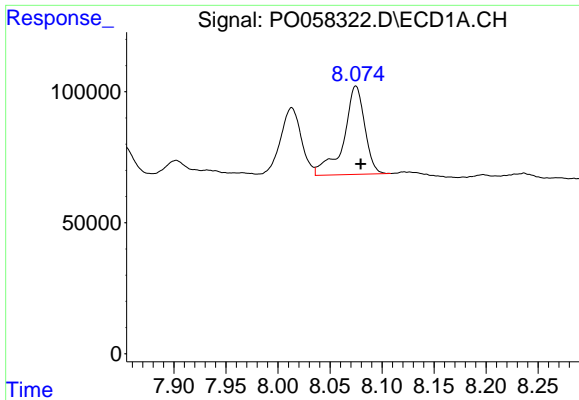
#35 AR-1260-5
 R.T.: 7.091 min
 Delta R.T.: -0.014 min
 Response: 315179
 Conc: 68.48 ng/ml



#36 AR-1262-1
 R.T.: 7.537 min
 Delta R.T.: -0.011 min
 Response: 416560
 Conc: 75.40 ng/ml



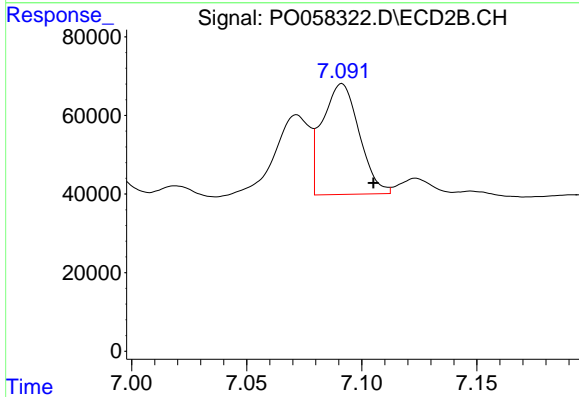
#36 AR-1262-1
 R.T.: 6.625 min
 Delta R.T.: 0.019 min
 Response: 93604
 Conc: 23.57 ng/ml



#37 AR-1262-2

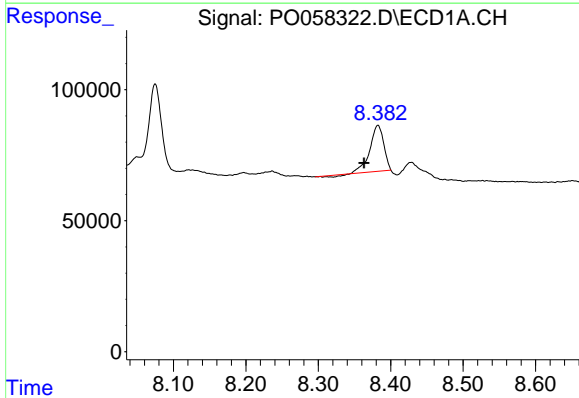
R.T.: 8.075 min
 Delta R.T.: -0.005 min
 Response: 476218
 Conc: 56.00 ng/ml

Instrument :
 ECD_O
 ClientSampleId :
 S2-02-BDL



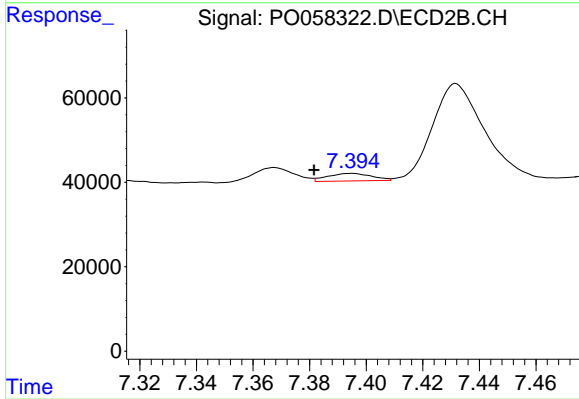
#37 AR-1262-2

R.T.: 7.091 min
 Delta R.T.: -0.014 min
 Response: 315179
 Conc: 48.80 ng/ml



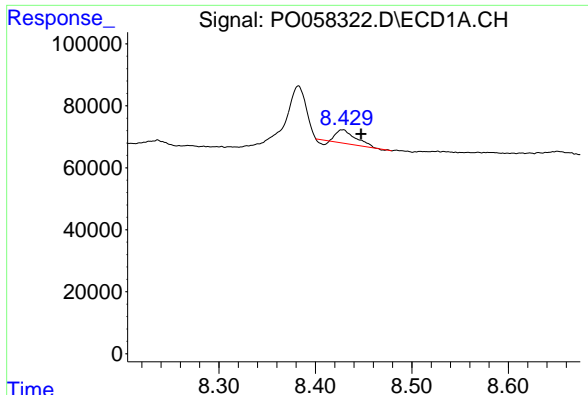
#38 AR-1262-3

R.T.: 8.382 min
 Delta R.T.: 0.019 min
 Response: 227986
 Conc: 40.50 ng/ml



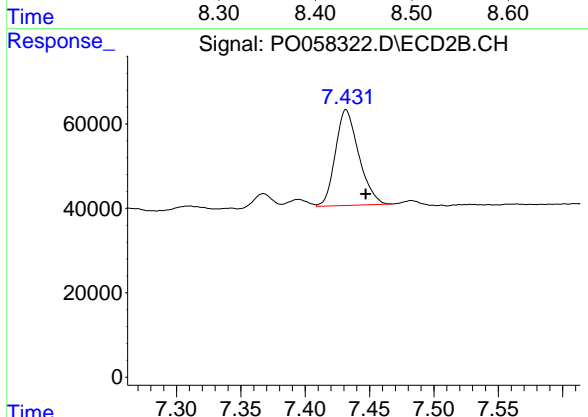
#38 AR-1262-3

R.T.: 7.395 min
 Delta R.T.: 0.013 min
 Response: 19290
 Conc: 7.00 ng/ml

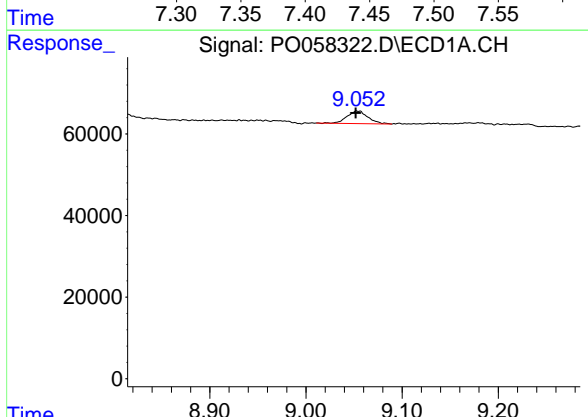


#39 AR-1262-4
 R.T.: 8.428 min
 Delta R.T.: -0.019 min
 Response: 55064
 Conc: 12.07 ng/ml

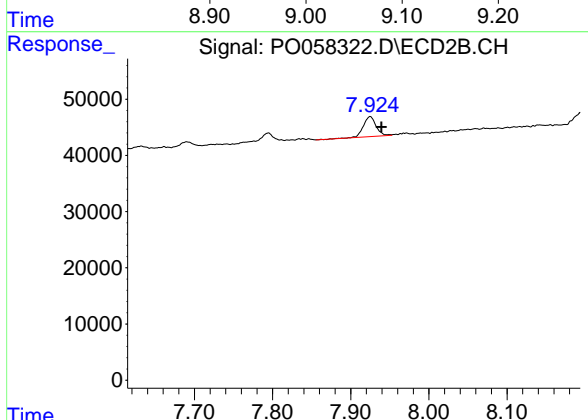
Instrument :
 ECD_O
 ClientSampled :
 S2-02-BDL



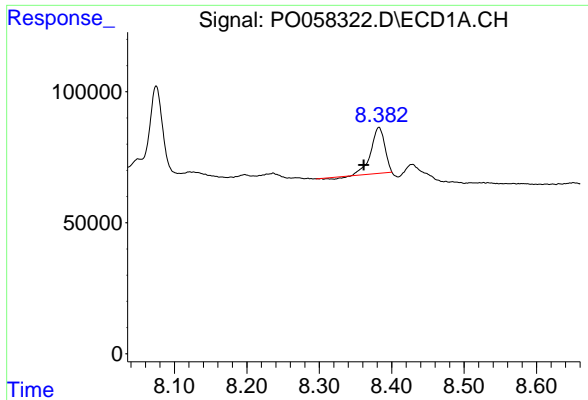
#39 AR-1262-4
 R.T.: 7.432 min
 Delta R.T.: -0.015 min
 Response: 286532
 Conc: 60.01 ng/ml



#40 AR-1262-5
 R.T.: 9.054 min
 Delta R.T.: 0.002 min
 Response: 46827
 Conc: 16.85 ng/ml

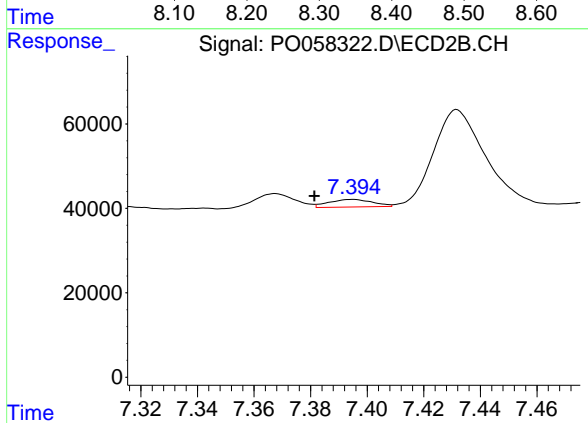


#40 AR-1262-5
 R.T.: 7.925 min
 Delta R.T.: -0.014 min
 Response: 39810
 Conc: 20.02 ng/ml

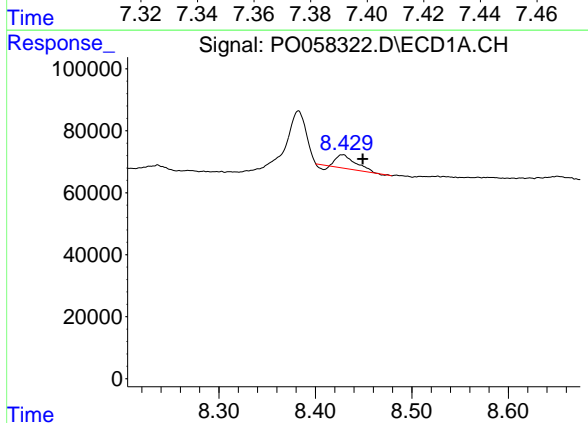


#41 AR-1268-1
 R.T.: 8.382 min
 Delta R.T.: 0.021 min
 Response: 227986
 Conc: 22.17 ng/ml

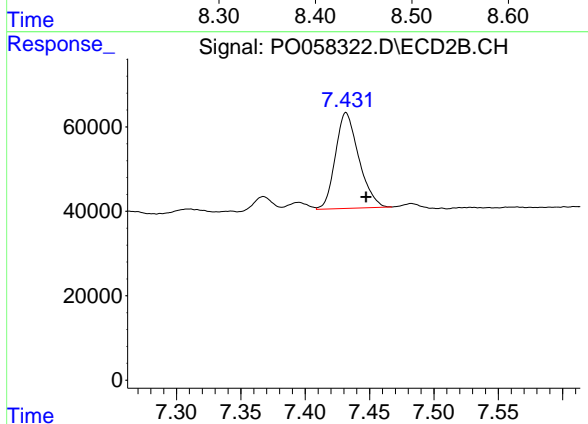
Instrument :
 ECD_O
 ClientSampleId :
 S2-02-BDL



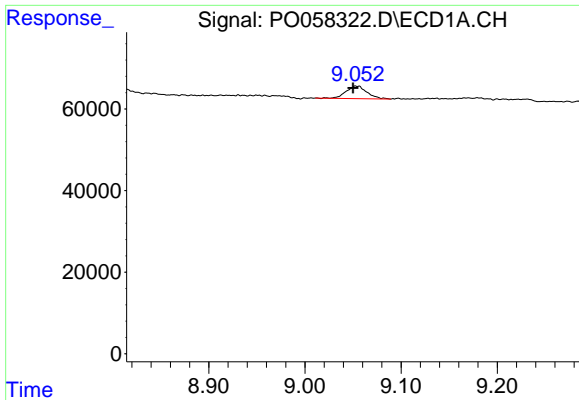
#41 AR-1268-1
 R.T.: 7.395 min
 Delta R.T.: 0.013 min
 Response: 19290
 Conc: 2.47 ng/ml



#42 AR-1268-2
 R.T.: 8.428 min
 Delta R.T.: -0.021 min
 Response: 55064
 Conc: 6.01 ng/ml



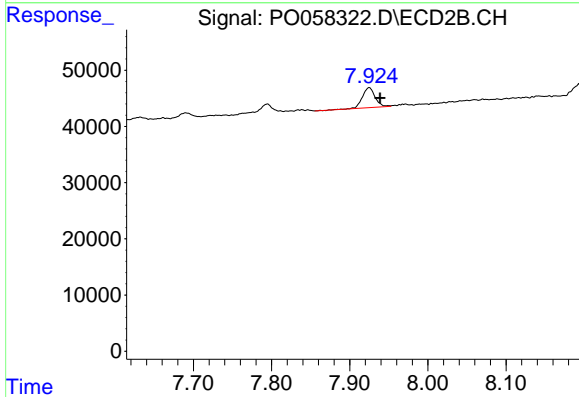
#42 AR-1268-2
 R.T.: 7.432 min
 Delta R.T.: -0.016 min
 Response: 286532
 Conc: 40.21 ng/ml



#44 AR-1268-4

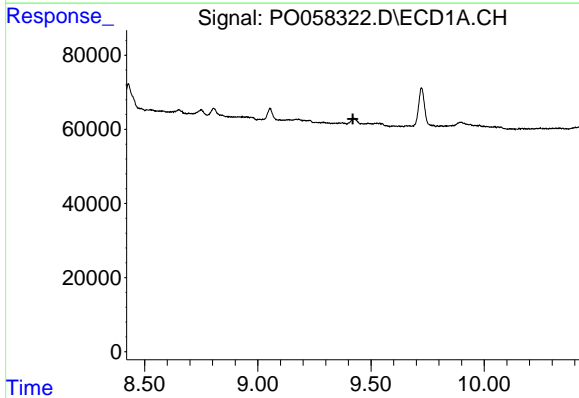
R.T.: 9.054 min
 Delta R.T.: 0.003 min
 Response: 46827
 Conc: 15.80 ng/ml

Instrument :
 ECD_O
 ClientSampled :
 S2-02-BDL



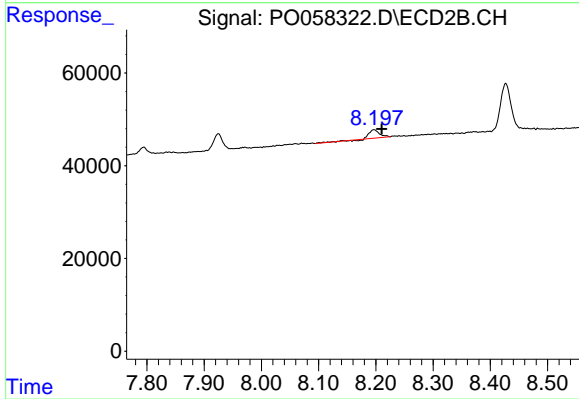
#44 AR-1268-4

R.T.: 7.925 min
 Delta R.T.: -0.014 min
 Response: 39810
 Conc: 19.03 ng/ml



#45 AR-1268-5

R.T.: 0.000 min
 Exp R.T. : 9.420 min
 Response: 0
 Conc: N.D.



#45 AR-1268-5

R.T.: 8.197 min
 Delta R.T.: -0.014 min
 Response: 22474
 Conc: 1.35 ng/ml