

Data Path : Z:\pestpcbsrv\HPCHEM1\ECD_O\Data\P0072419\
 Data File : P0058306.D
 Signal(s) : Signal #1: ECD1A.CH Signal #2: ECD2B.CH
 Acq On : 23 Jul 2019 9:20
 Operator : SM/AJ
 Sample : AR1660CCC500
 Misc :
 ALS Vial : 3 Sample Multiplier: 1

Instrument :
 ECD_O
ClientSampleId :
 AR1660CCC500

Manual Integrations
APPROVED
 Ankita
 7/25/2019 3:24:09 PM

Integration File signal 1: autoint1.e
 Integration File signal 2: autoint2.e
 Quant Time: Jul 23 11:04:03 2019
 Quant Method : Z:\pestpcbsrv\HPCHEM1\ECD_O\methods\P0071719.M
 Quant Title : GC EXTRACTABLES
 QLast Update : Wed Jul 17 11:13:08 2019
 Response via : Initial Calibration
 Integrator: ChemStation 6890 Scale Mode: Small noise peaks clipped

Volume Inj. : 2 µl
 Signal #1 Phase : ZB-MR1 Signal #2 Phase: ZB-MR2
 Signal #1 Info : 30Mx0.32mmx 0.50µ Signal #2 Info : 30M x 0.32mm x 0.25µm

Compound	RT#1	RT#2	Resp#1	Resp#2	ng/ml	ng/ml

System Monitoring Compounds						
1) SA Tetrachlo...	4.189	3.532	1823010	1581169	53.797	49.298
2) SA Decachlor...	9.714	8.430	2191842	1616954	42.844	47.175
Target Compounds						
3) L1 AR-1016-1	5.345	4.591	762286	524716	493.952m	439.047m
4) L1 AR-1016-2	5.367	4.609	1159483	775895	513.338m	437.926m
5) L1 AR-1016-3	5.428	4.782	685519	412633	484.371	439.556
6) L1 AR-1016-4	5.526	4.823	584051	365552	512.817	469.573
7) L1 AR-1016-5	5.814	5.032	623763	478161	543.786m	466.408m
31) L7 AR-1260-1	6.926	6.048	1259273	895141	503.482	442.003
32) L7 AR-1260-2	7.181	6.235	1828593	1158448	520.098	450.473
33) L7 AR-1260-3	7.537	6.386	1584627	1021183	539.688	447.747
34) L7 AR-1260-4	7.764	6.850	1444193	891988	528.670	460.679
35) L7 AR-1260-5	8.071	7.094	2854503	2133508	492.038	463.550

(f)=RT Delta > 1/2 Window (#)=Amounts differ by > 25% (m)=manual int.

Data Path : Z:\pestpcbsrv\HPCHEM1\ECD_O\Data\PO072419\
 Data File : PO058306.D
 Signal(s) : Signal #1: ECD1A.CH Signal #2: ECD2B.CH
 Acq On : 23 Jul 2019 9:20
 Operator : SM/AJ
 Sample : AR1660CCC500
 Misc :
 ALS Vial : 3 Sample Multiplier: 1

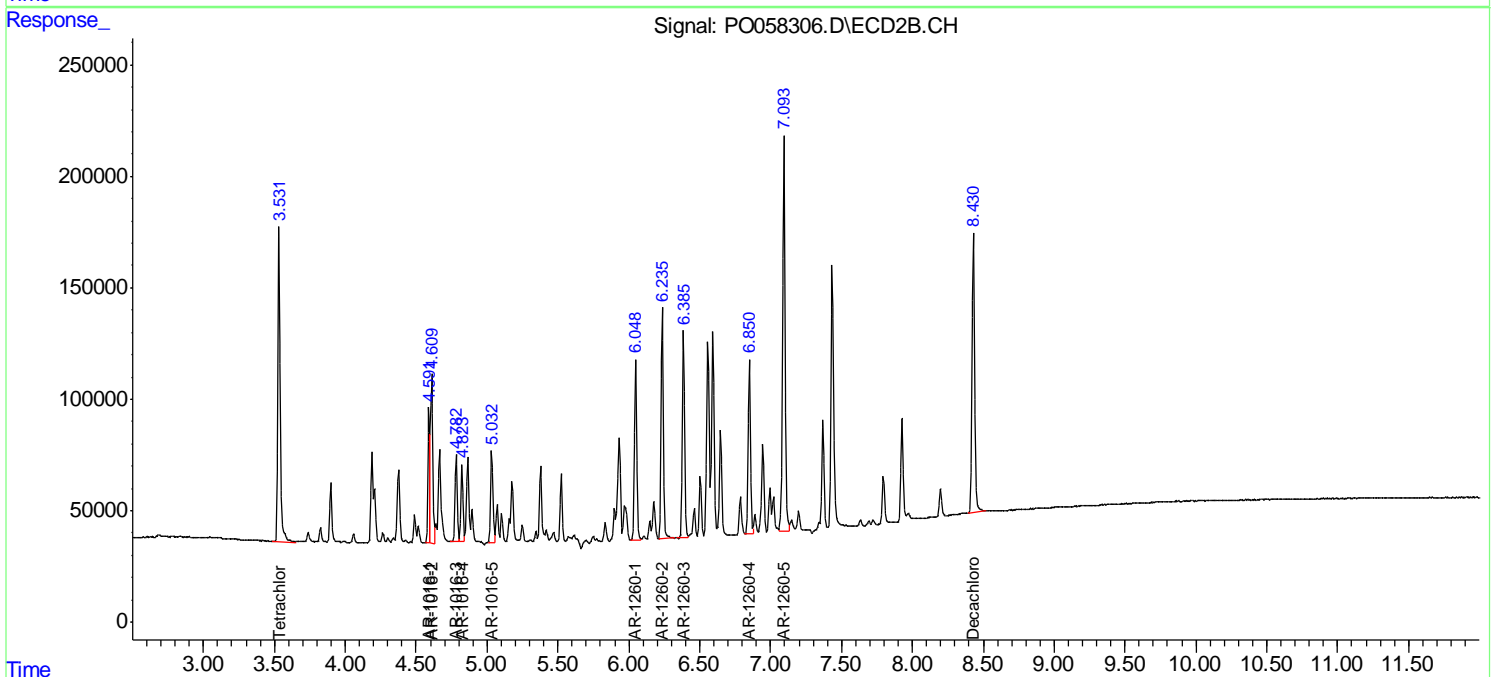
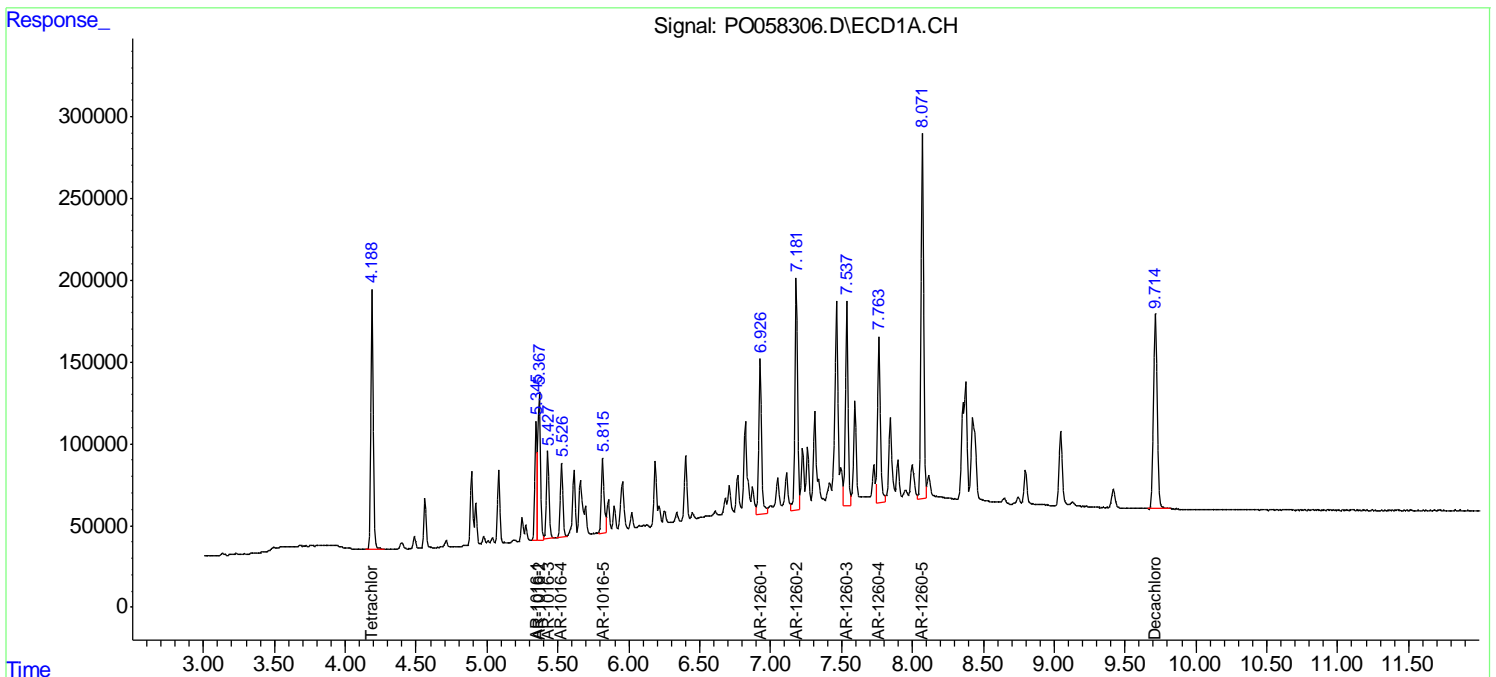
Instrument :
 ECD_O
 Client Sampled :
 AR1660CCC500

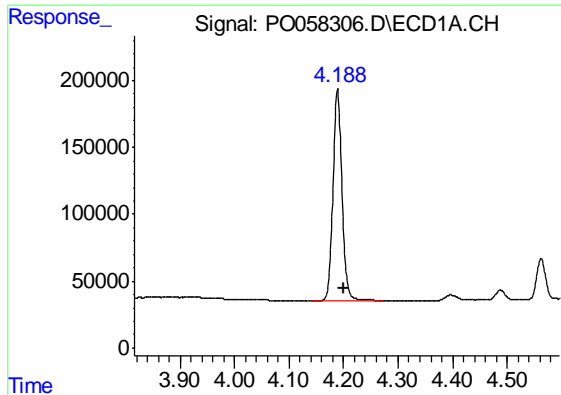
Manual Integrations
 APPROVED

Ankita
 7/25/2019 3:24:09 PM

Integration File signal 1: autoint1.e
 Integration File signal 2: autoint2.e
 Quant Time: Jul 23 11:04:03 2019
 Quant Method : Z:\pestpcbsrv\HPCHEM1\ECD_O\methods\PO071719.M
 Quant Title : GC EXTRACTABLES
 QLast Update : Wed Jul 17 11:13:08 2019
 Response via : Initial Calibration
 Integrator: ChemStation 6890 Scale Mode: Small noise peaks clipped

Volume Inj. : 2 µl
 Signal #1 Phase : ZB-MR1 Signal #2 Phase: ZB-MR2
 Signal #1 Info : 30Mx0.32mmx 0.50µ Signal #2 Info : 30M x 0.32mm x 0.25µm





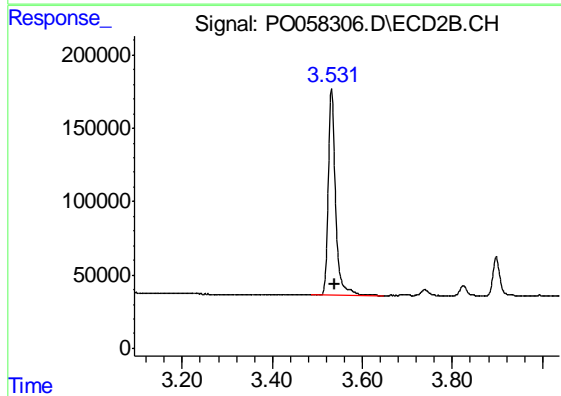
#1 Tetrachloro-m-xylene

R.T.: 4.189 min
 Delta R.T.: -0.011 min
 Response: 1823010
 Conc: 53.80 ng/ml

Instrument :
 ECD_O
 ClientSampled :
 AR1660CCC500

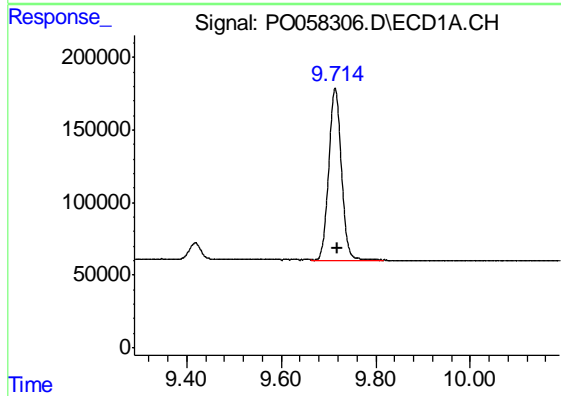
Manual Integrations
 APPROVED

Ankita
 7/25/2019 3:24:09 PM



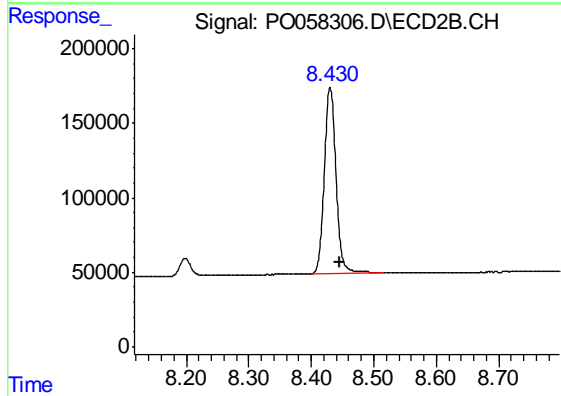
#1 Tetrachloro-m-xylene

R.T.: 3.532 min
 Delta R.T.: -0.008 min
 Response: 1581169
 Conc: 49.30 ng/ml



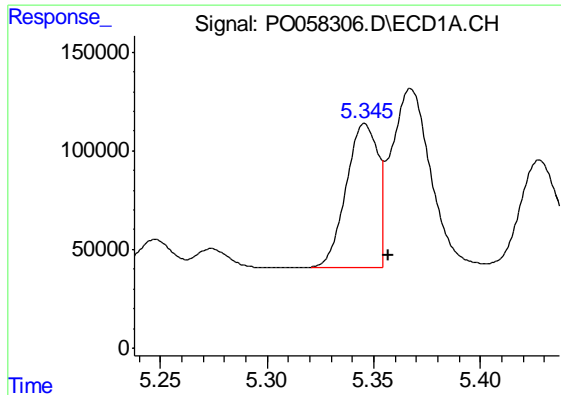
#2 Decachlorobiphenyl

R.T.: 9.714 min
 Delta R.T.: -0.004 min
 Response: 2191842
 Conc: 42.84 ng/ml



#2 Decachlorobiphenyl

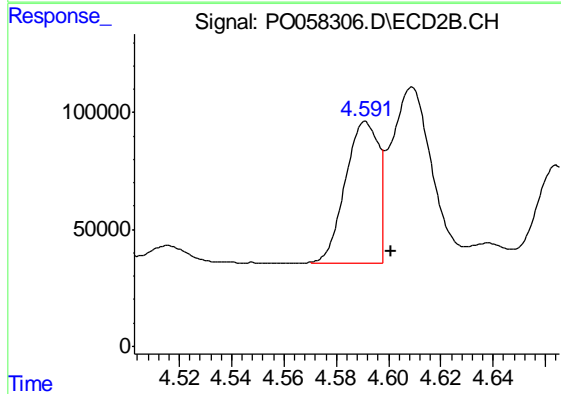
R.T.: 8.430 min
 Delta R.T.: -0.015 min
 Response: 1616954
 Conc: 47.17 ng/ml



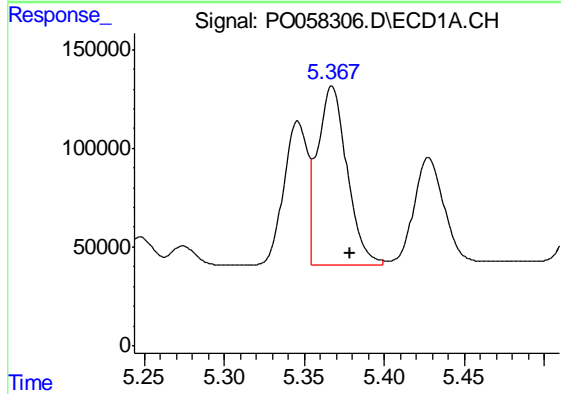
#3 AR-1016-1
 R.T.: 5.345 min
 Delta R.T.: -0.012 min
 Response: 762286
 Conc: 493.95 ng/ml m

Instrument :
 ECD_O
ClientSampled :
 AR1660CCC500

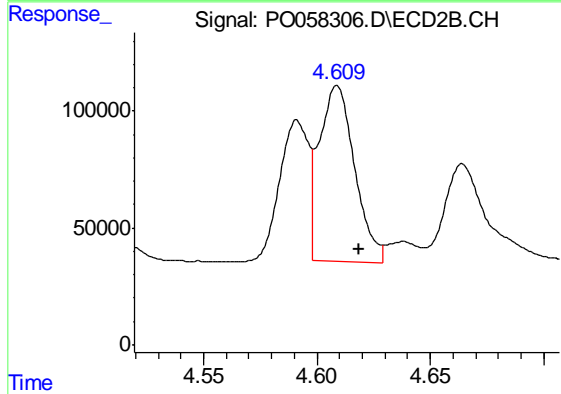
Manual Integrations
APPROVED
 Ankita
 7/25/2019 3:24:09 PM



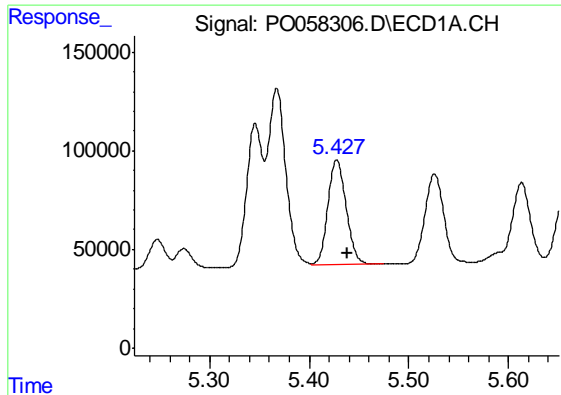
#3 AR-1016-1
 R.T.: 4.591 min
 Delta R.T.: -0.011 min
 Response: 524716
 Conc: 439.05 ng/ml m



#4 AR-1016-2
 R.T.: 5.367 min
 Delta R.T.: -0.012 min
 Response: 1159483
 Conc: 513.34 ng/ml m



#4 AR-1016-2
 R.T.: 4.609 min
 Delta R.T.: -0.010 min
 Response: 775895
 Conc: 437.93 ng/ml m



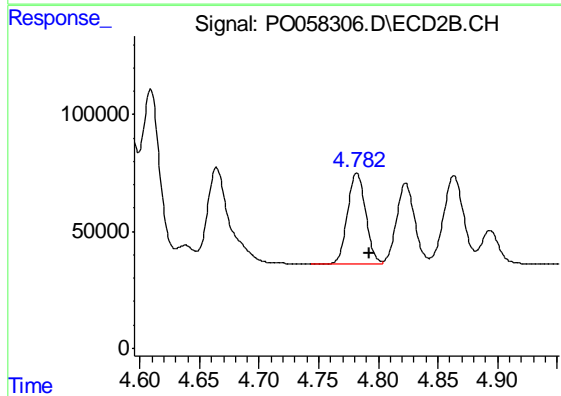
#5 AR-1016-3

R.T.: 5.428 min
 Delta R.T.: -0.011 min
 Response: 685519
 Conc: 484.37 ng/ml

Instrument :
 ECD_O
 ClientSampled :
 AR1660CCC500

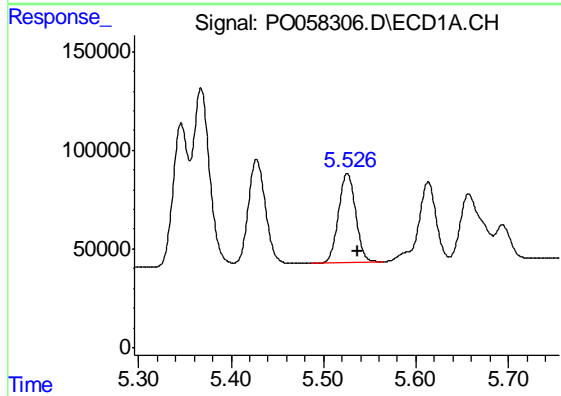
Manual Integrations
 APPROVED

Ankita
 7/25/2019 3:24:09 PM



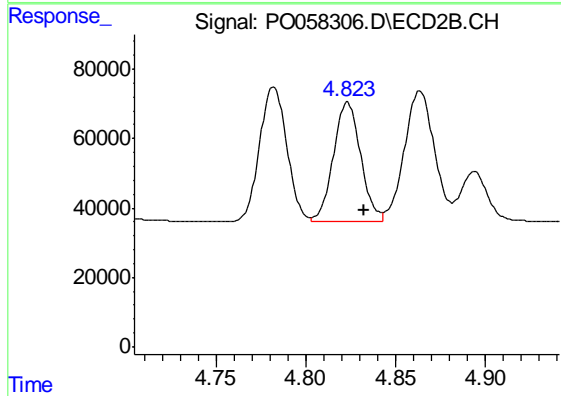
#5 AR-1016-3

R.T.: 4.782 min
 Delta R.T.: -0.011 min
 Response: 412633
 Conc: 439.56 ng/ml



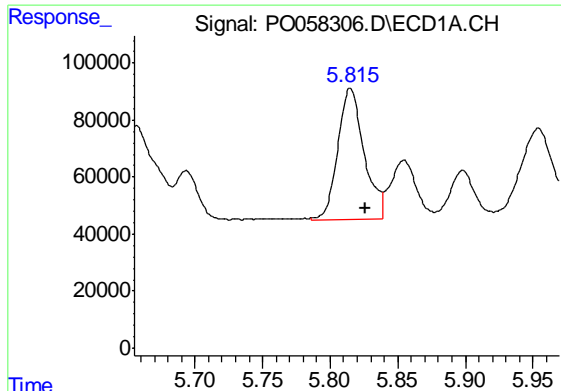
#6 AR-1016-4

R.T.: 5.526 min
 Delta R.T.: -0.012 min
 Response: 584051
 Conc: 512.82 ng/ml



#6 AR-1016-4

R.T.: 4.823 min
 Delta R.T.: -0.010 min
 Response: 365552
 Conc: 469.57 ng/ml



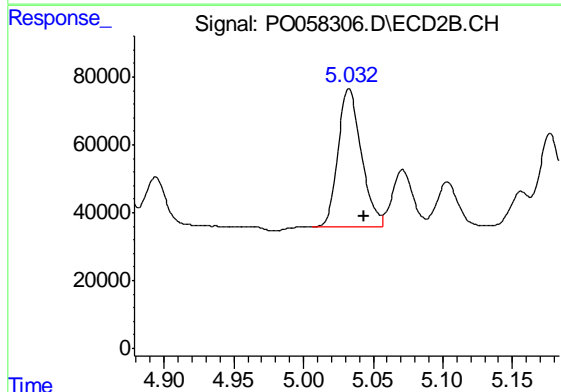
#7 AR-1016-5

R.T.: 5.814 min
 Delta R.T.: -0.012 min
 Response: 623763
 Conc: 543.79 ng/ml m

Instrument :
 ECD_O
 ClientSampled :
 AR1660CCC500

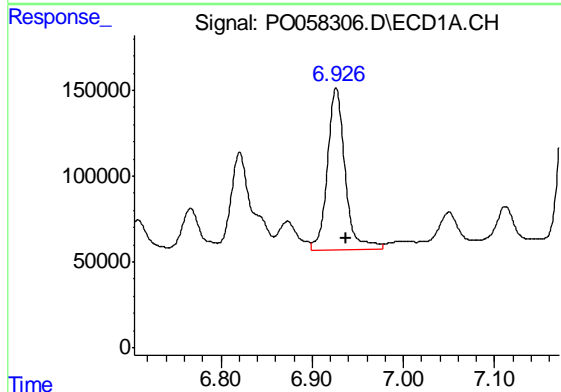
Manual Integrations
 APPROVED

Ankita
 7/25/2019 3:24:09 PM



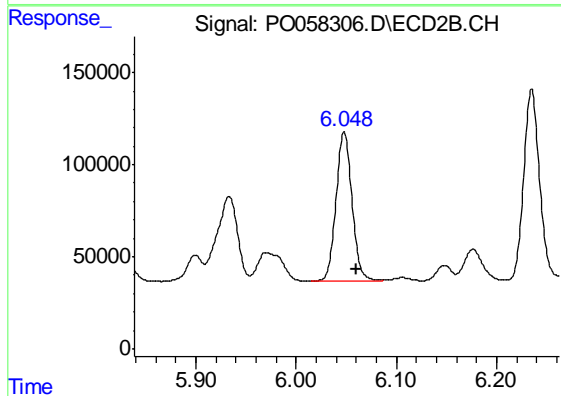
#7 AR-1016-5

R.T.: 5.032 min
 Delta R.T.: -0.011 min
 Response: 478161
 Conc: 466.41 ng/ml m



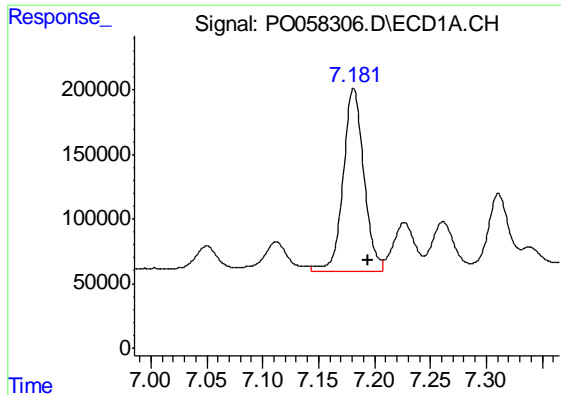
#31 AR-1260-1

R.T.: 6.926 min
 Delta R.T.: -0.011 min
 Response: 1259273
 Conc: 503.48 ng/ml



#31 AR-1260-1

R.T.: 6.048 min
 Delta R.T.: -0.012 min
 Response: 895141
 Conc: 442.00 ng/ml



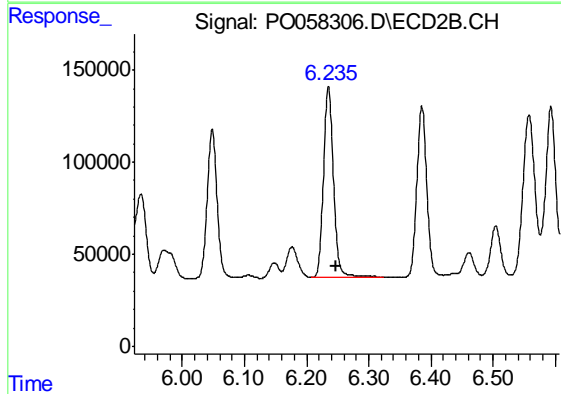
#32 AR-1260-2

R.T.: 7.181 min
 Delta R.T.: -0.013 min
 Response: 1828593
 Conc: 520.10 ng/ml

Instrument :
 ECD_O
 ClientSampled :
 AR1660CCC500

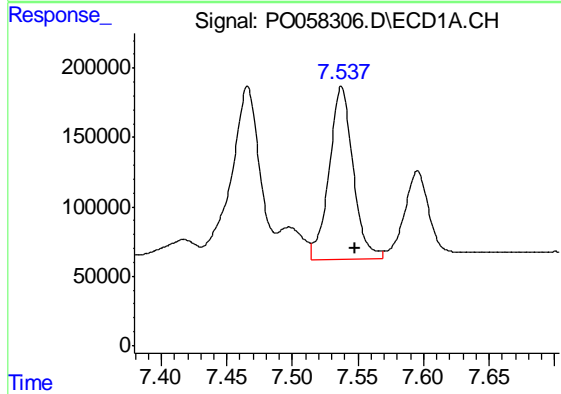
Manual Integrations
 APPROVED

Ankita
 7/25/2019 3:24:09 PM



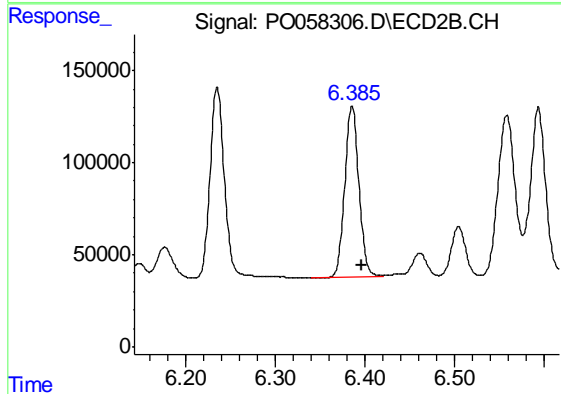
#32 AR-1260-2

R.T.: 6.235 min
 Delta R.T.: -0.011 min
 Response: 1158448
 Conc: 450.47 ng/ml



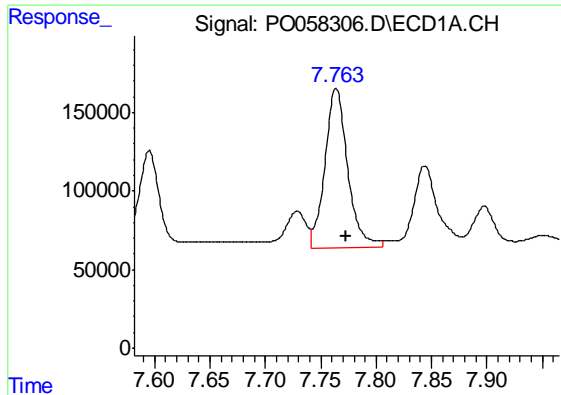
#33 AR-1260-3

R.T.: 7.537 min
 Delta R.T.: -0.010 min
 Response: 1584627
 Conc: 539.69 ng/ml



#33 AR-1260-3

R.T.: 6.386 min
 Delta R.T.: -0.011 min
 Response: 1021183
 Conc: 447.75 ng/ml



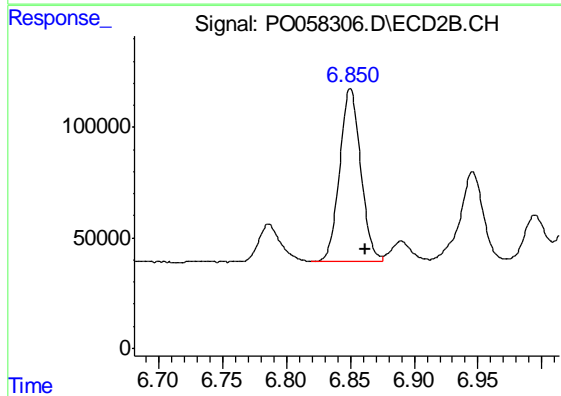
#34 AR-1260-4

R.T.: 7.764 min
 Delta R.T.: -0.009 min
 Response: 1444193
 Conc: 528.67 ng/ml

Instrument :
 ECD_O
 ClientSampled :
 AR1660CCC500

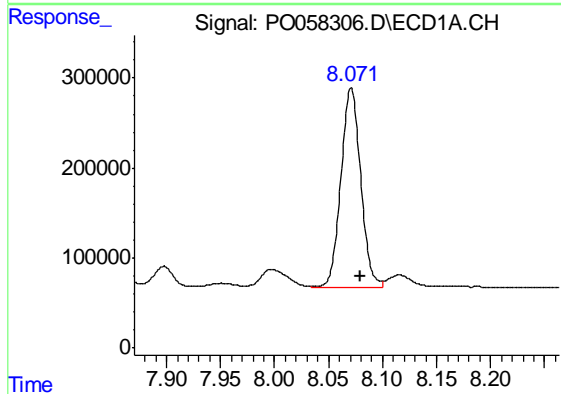
Manual Integrations
 APPROVED

Ankita
 7/25/2019 3:24:09 PM



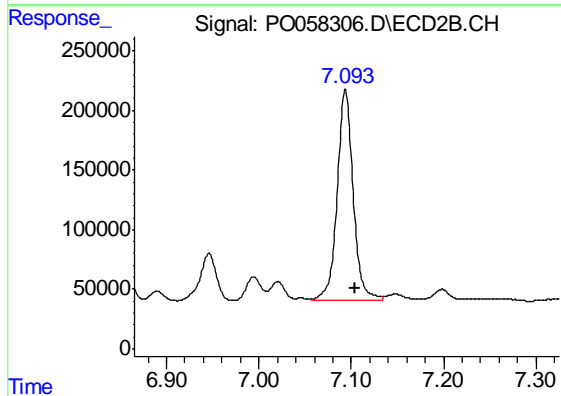
#34 AR-1260-4

R.T.: 6.850 min
 Delta R.T.: -0.012 min
 Response: 891988
 Conc: 460.68 ng/ml



#35 AR-1260-5

R.T.: 8.071 min
 Delta R.T.: -0.008 min
 Response: 2854503
 Conc: 492.04 ng/ml



#35 AR-1260-5

R.T.: 7.094 min
 Delta R.T.: -0.011 min
 Response: 2133508
 Conc: 463.55 ng/ml