

Data Path : Z:\pestpcbsrv\HPCHEM1\ECD_O\Data\P0072419\
 Data File : P0058341.D
 Signal(s) : Signal #1: ECD1A.CH Signal #2: ECD2B.CH
 Acq On : 24 Jul 2019 4:46
 Operator : SM/AJ
 Sample : K3929-03
 Misc :
 ALS Vial : 18 Sample Multiplier: 1

Instrument :
 ECD_O
ClientSampleId :
 30319

Manual Integrations
APPROVED
 Ankita
 7/27/2019 9:45:03 AM

Integration File signal 1: autoint1.e
 Integration File signal 2: autoint2.e
 Quant Time: Jul 24 06:39:09 2019
 Quant Method : Z:\pestpcbsrv\HPCHEM1\ECD_O\methods\P0071719.M
 Quant Title : GC EXTRACTABLES
 QLast Update : Wed Jul 17 11:13:08 2019
 Response via : Initial Calibration
 Integrator: ChemStation 6890 Scale Mode: Small noise peaks clipped

Volume Inj. : 2 µl
 Signal #1 Phase : ZB-MR1 Signal #2 Phase: ZB-MR2
 Signal #1 Info : 30Mx0.32mmx 0.50µ Signal #2 Info : 30M x 0.32mm x 0.25µm

Compound	RT#1	RT#2	Resp#1	Resp#2	ng/ml	ng/ml

System Monitoring Compounds						
1) SA Tetrachlo...	4.190	3.532	474579	363378	14.005	11.329
2) SA Decachlor...	9.690	8.427	527651	370362	10.314	10.805
Target Compounds						
3) L1 AR-1016-1	5.346	4.590	82104	64482	53.203m	53.955m
4) L1 AR-1016-2	5.368	4.608	110100	86967	48.745	49.086m
5) L1 AR-1016-3	5.427	4.781	62723	34971	44.318	37.253m
6) L1 AR-1016-4	5.526	4.822	50646	32551	44.469	41.814
7) L1 AR-1016-5	5.815	5.030	44017	40645	38.374m	39.645m

(f)=RT Delta > 1/2 Window (#)=Amounts differ by > 25% (m)=manual int.

Data Path : Z:\pestpcbsrv\HPCHEM1\ECD_O\Data\P0072419\
 Data File : P0058341.D
 Signal(s) : Signal #1: ECD1A.CH Signal #2: ECD2B.CH
 Acq On : 24 Jul 2019 4:46
 Operator : SM/AJ
 Sample : K3929-03
 Misc :
 ALS Vial : 18 Sample Multiplier: 1

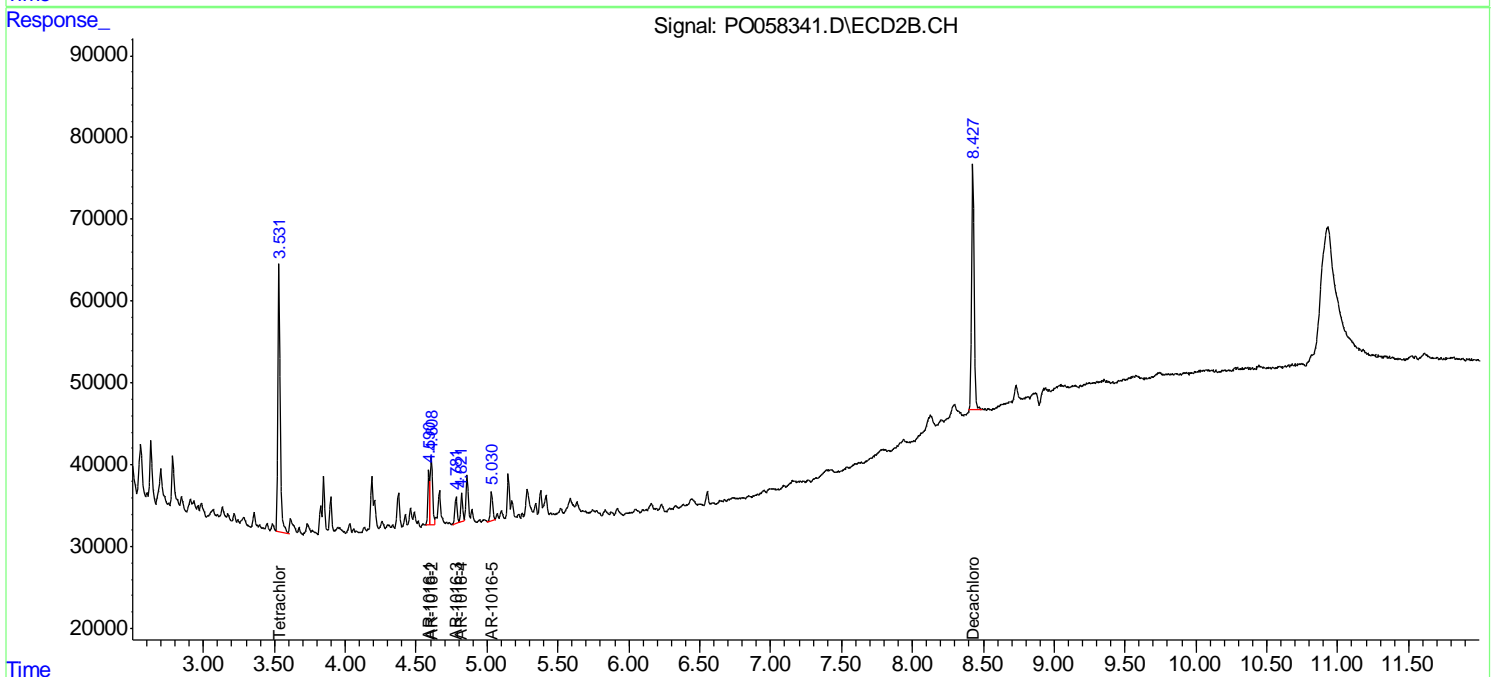
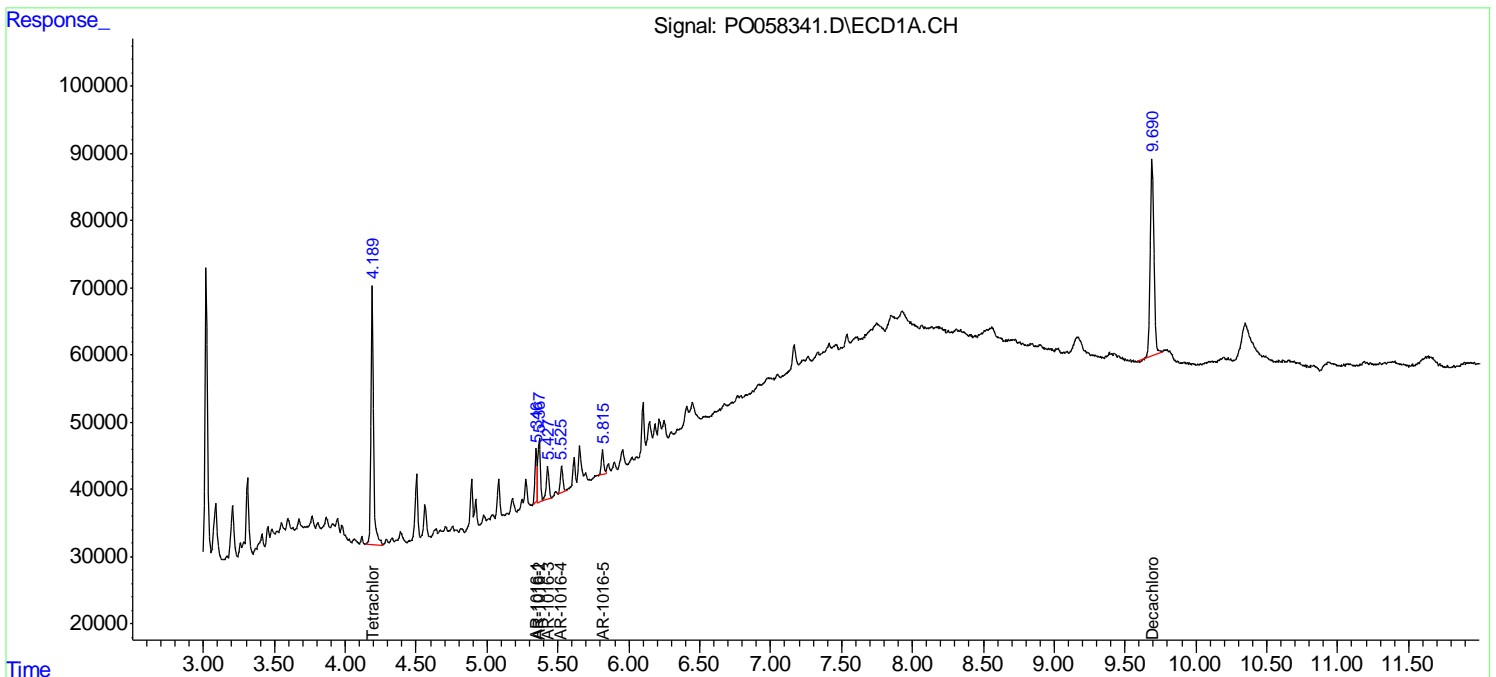
Instrument :
 ECD_O
 Client Sampled :
 30319

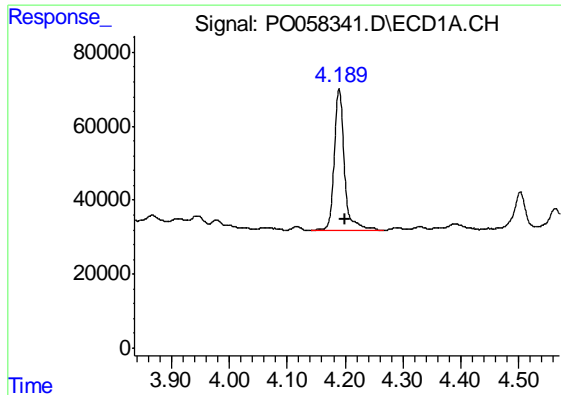
Manual Integrations
 APPROVED

Ankita
 7/27/2019 9:45:03 AM

Integration File signal 1: autoint1.e
 Integration File signal 2: autoint2.e
 Quant Time: Jul 24 06:39:09 2019
 Quant Method : Z:\pestpcbsrv\HPCHEM1\ECD_O\methods\P0071719.M
 Quant Title : GC EXTRACTABLES
 QLast Update : Wed Jul 17 11:13:08 2019
 Response via : Initial Calibration
 Integrator: ChemStation 6890 Scale Mode: Small noise peaks clipped

Volume Inj. : 2 µl
 Signal #1 Phase : ZB-MR1 Signal #2 Phase: ZB-MR2
 Signal #1 Info : 30Mx0.32mmx 0.50µ Signal #2 Info : 30M x 0.32mm x 0.25µm





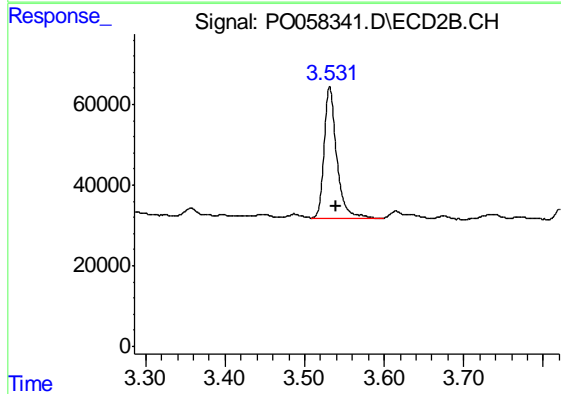
#1 Tetrachloro-m-xylene

R.T.: 4.190 min
 Delta R.T.: -0.010 min
 Response: 474579
 Conc: 14.00 ng/ml

Instrument :
 ECD_O
 ClientSampled :
 30319

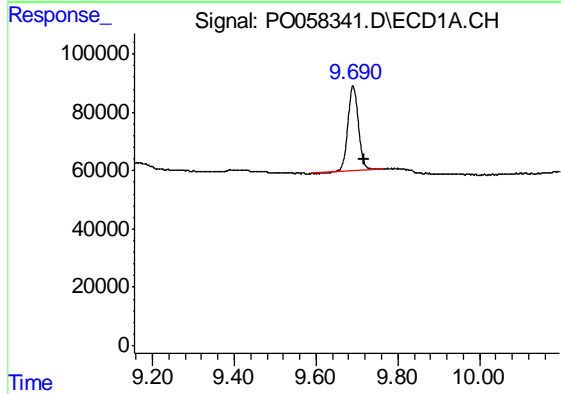
Manual Integrations
 APPROVED

Ankita
 7/27/2019 9:45:03 AM



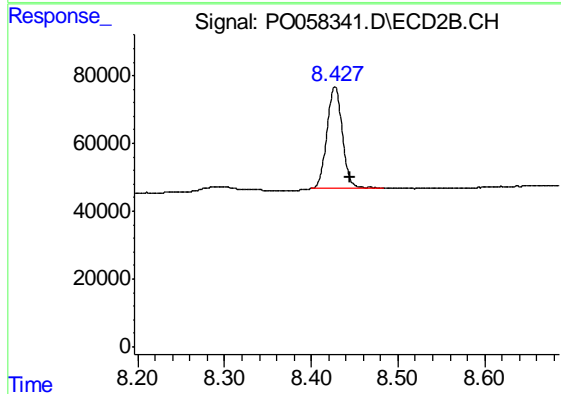
#1 Tetrachloro-m-xylene

R.T.: 3.532 min
 Delta R.T.: -0.008 min
 Response: 363378
 Conc: 11.33 ng/ml



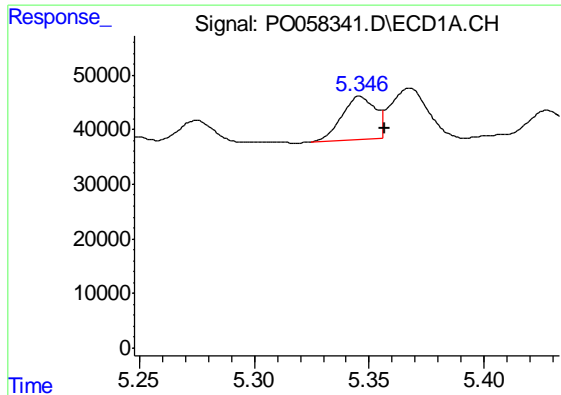
#2 Decachlorobiphenyl

R.T.: 9.690 min
 Delta R.T.: -0.028 min
 Response: 527651
 Conc: 10.31 ng/ml



#2 Decachlorobiphenyl

R.T.: 8.427 min
 Delta R.T.: -0.018 min
 Response: 370362
 Conc: 10.81 ng/ml



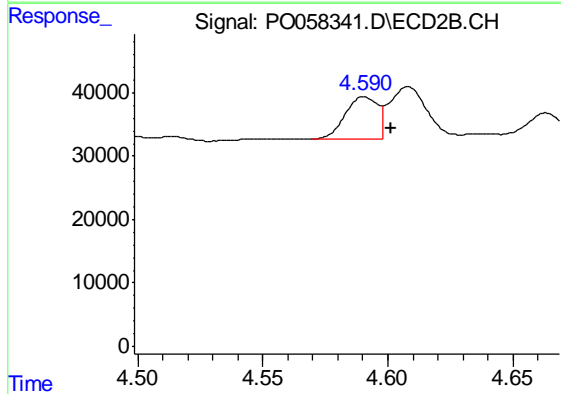
#3 AR-1016-1

R.T.: 5.346 min
 Delta R.T.: -0.011 min
 Response: 82104
 Conc: 53.20 ng/ml m

Instrument :
 ECD_O
 ClientSampled :
 30319

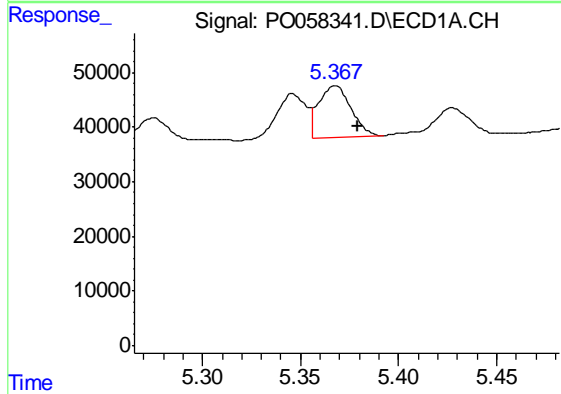
Manual Integrations
 APPROVED

Ankita
 7/27/2019 9:45:03 AM



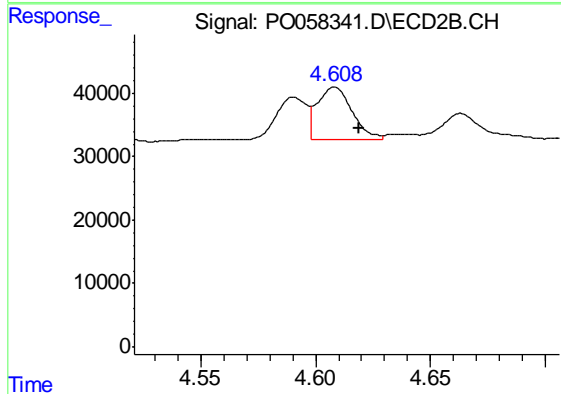
#3 AR-1016-1

R.T.: 4.590 min
 Delta R.T.: -0.011 min
 Response: 64482
 Conc: 53.95 ng/ml m



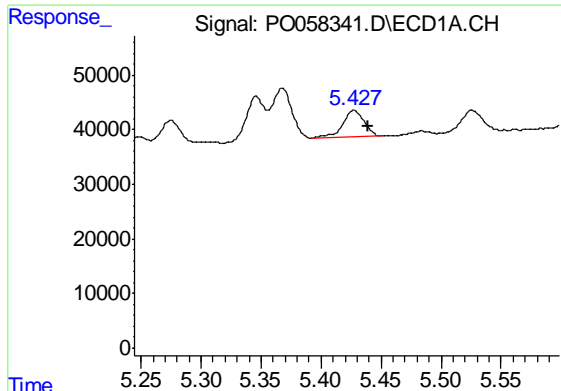
#4 AR-1016-2

R.T.: 5.368 min
 Delta R.T.: -0.011 min
 Response: 110100
 Conc: 48.74 ng/ml m



#4 AR-1016-2

R.T.: 4.608 min
 Delta R.T.: -0.011 min
 Response: 86967
 Conc: 49.09 ng/ml m



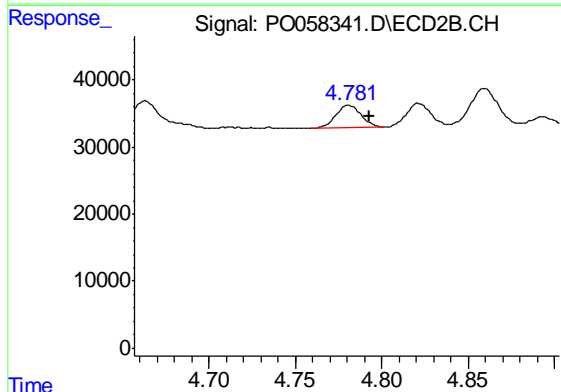
#5 AR-1016-3

R.T.: 5.427 min
 Delta R.T.: -0.012 min
 Response: 62723
 Conc: 44.32 ng/ml

Instrument :
 ECD_O
 ClientSampled :
 30319

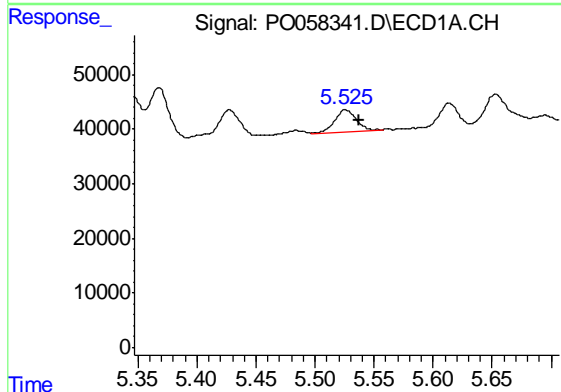
Manual Integrations
 APPROVED

Ankita
 7/27/2019 9:45:03 AM



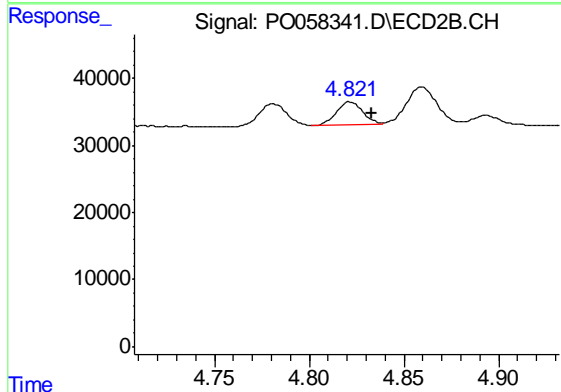
#5 AR-1016-3

R.T.: 4.781 min
 Delta R.T.: -0.012 min
 Response: 34971
 Conc: 37.25 ng/ml m



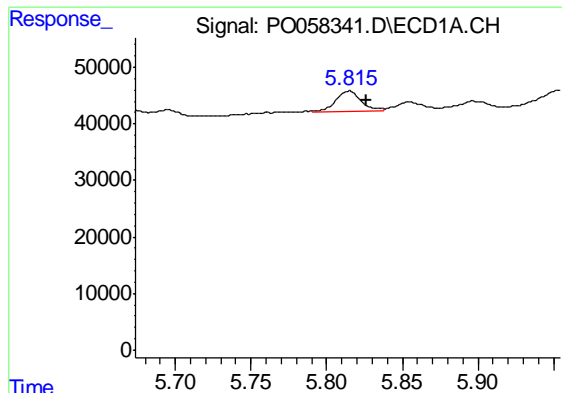
#6 AR-1016-4

R.T.: 5.526 min
 Delta R.T.: -0.012 min
 Response: 50646
 Conc: 44.47 ng/ml



#6 AR-1016-4

R.T.: 4.822 min
 Delta R.T.: -0.011 min
 Response: 32551
 Conc: 41.81 ng/ml



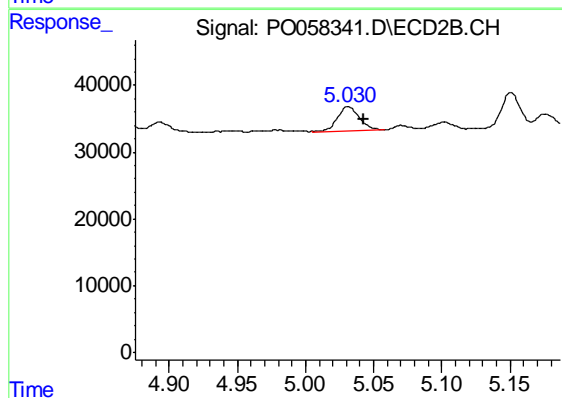
#7 AR-1016-5

R.T.: 5.815 min
Delta R.T.: -0.011 min
Response: 44017
Conc: 38.37 ng/ml m

Instrument :
ECD_O
ClientSampled :
30319

Manual Integrations
APPROVED

Ankita
7/27/2019 9:45:03 AM



#7 AR-1016-5

R.T.: 5.030 min
Delta R.T.: -0.013 min
Response: 40645
Conc: 39.65 ng/ml m