

Data Path : Z:\pestpcbsrv\HPCHEM1\ECD O\Data\PO072518\
 Data File : PO047189.D
 Signal(s) : Signal #1: ECD1A.CH Signal #2: ECD2B.CH
 Acq On : 26 Jul 2018 7:13
 Operator : SM/SJ
 Sample : J4143-01
 Misc :
 ALS Vial : 46 Sample Multiplier: 1

Instrument :
 ECD_O
 ClientSampleId :
 SB-1(3-5)

Manual Integrations
 APPROVED

Sohil
 7/26/2018 4:17:22 PM

Integration File signal 1: autoint1.e
 Integration File signal 2: autoint2.e
 Quant Time: Jul 26 10:47:23 2018
 Quant Method : Z:\pestpcbsrv\HPCHEM1\ECD_O\methods\PO072318.M
 Quant Title : GC EXTRACTABLES
 QLast Update : Tue Jul 24 03:04:21 2018
 Response via : Initial Calibration
 Integrator: ChemStation 6890 Scale Mode: Small noise peaks clipped

Volume Inj. : 2 ul
 Signal #1 Phase : ZB-MR1 Signal #2 Phase: ZB-MR2
 Signal #1 Info : 30Mx0.32mmx 0.50µ Signal #2 Info : 30M x 0.32mm x 0.25µm

Compound	RT#1	RT#2	Resp#1	Resp#2	nq/ml	nq/ml

System Monitoring Compounds						
1) SA Tetrachlo...	4.396	3.645	4912228	4397153	29.298m	22.926
2) SA Decachlor...	10.090	8.647	2919907	2658231	26.672	28.944
Target Compounds						
31) L7 AR-1260-1	7.162	6.211	555255	934921	92.458m	157.720m#
32) L7 AR-1260-2	7.412	6.397	1473791	780033	201.667m	111.061m#
33) L7 AR-1260-3	7.702	6.725	549959	931596	64.136m	124.087m#
34) L7 AR-1260-4	8.318	7.262	543638	565253	44.908m	48.470m
35) L7 AR-1260-5	8.639	7.613	329680	768420	44.691	92.667m#

(f)=RT Delta > 1/2 Window (#)=Amounts differ by > 25% (m)=manual int.

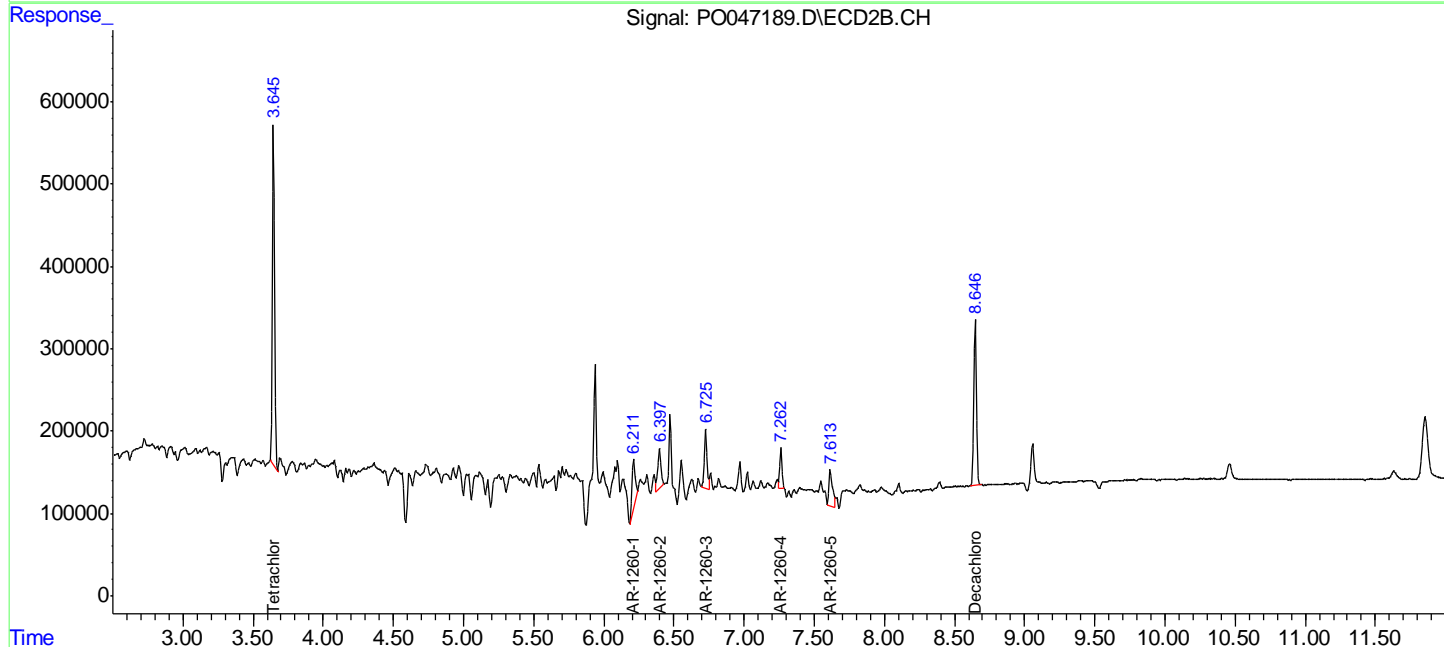
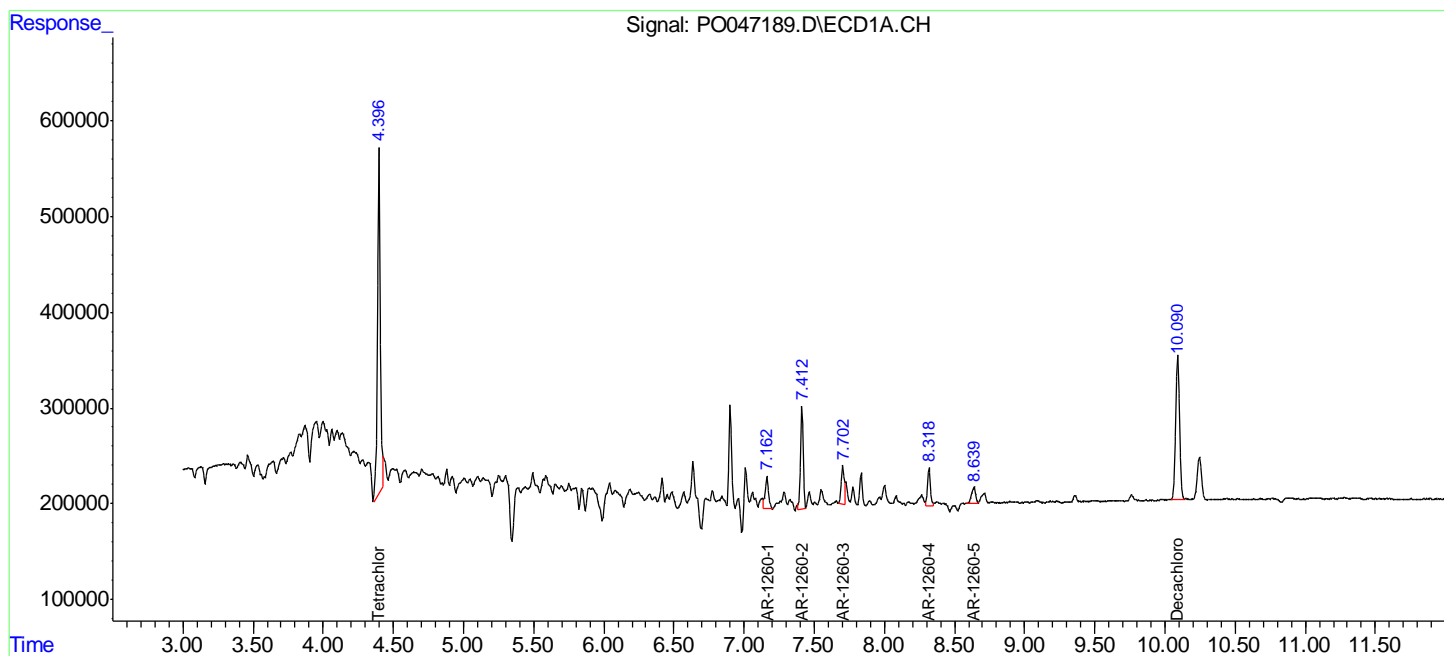
Data Path : Z:\pestpcbsrv\HPCHEM1\ECD O\Data\PO072518\
 Data File : PO047189.D
 Signal(s) : Signal #1: ECD1A.CH Signal #2: ECD2B.CH
 Acq On : 26 Jul 2018 7:13
 Operator : SM/SJ
 Sample : J4143-01
 Misc :
 ALS Vial : 46 Sample Multiplier: 1

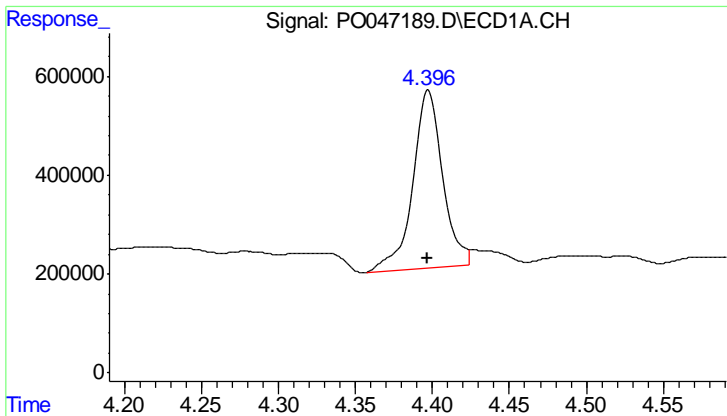
Instrument :
 ECD_O
 Client Sampled :
 SB-1(3-5)

Manual Integrations
APPROVED
 Sohil
 7/26/2018 4:17:22 PM

Integration File signal 1: autoint1.e
 Integration File signal 2: autoint2.e
 Quant Time: Jul 26 10:47:23 2018
 Quant Method : Z:\pestpcbsrv\HPCHEM1\ECD_O\methods\PO072318.M
 Quant Title : GC EXTRACTABLES
 QLast Update : Tue Jul 24 03:04:21 2018
 Response via : Initial Calibration
 Integrator: ChemStation 6890 Scale Mode: Small noise peaks clipped

Volume Inj. : 2 µl
 Signal #1 Phase : ZB-MR1 Signal #2 Phase: ZB-MR2
 Signal #1 Info : 30Mx0.32mmx 0.50µ Signal #2 Info : 30M x 0.32mm x 0.25µm





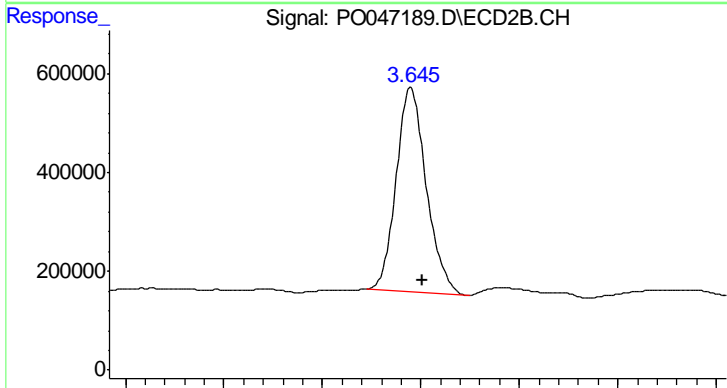
#1 Tetrachloro-m-xylene

R.T.: 4.396 min
 Delta R.T.: 0.000 min
 Response: 4912228
 Conc: 29.30 ng/ml

Instrument :
 ECD_O
 ClientSampled :
 SB-1(3-5)

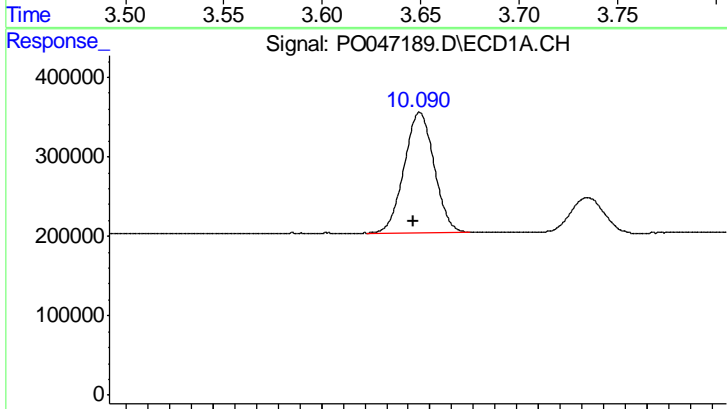
Manual Integrations
 APPROVED

Sohil
 7/26/2018 4:17:22 PM



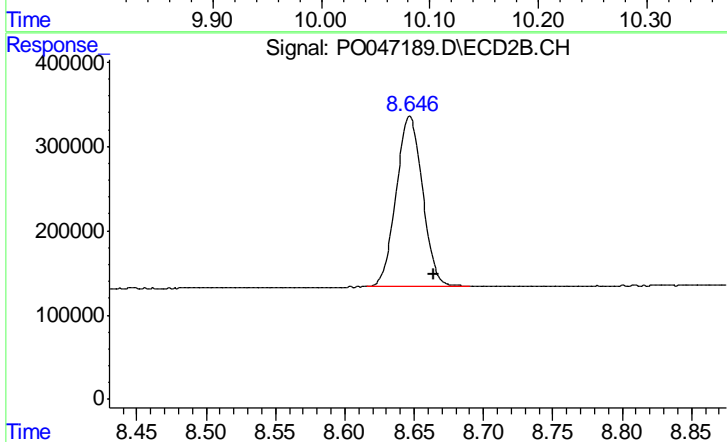
#1 Tetrachloro-m-xylene

R.T.: 3.645 min
 Delta R.T.: -0.006 min
 Response: 4397153
 Conc: 22.93 ng/ml



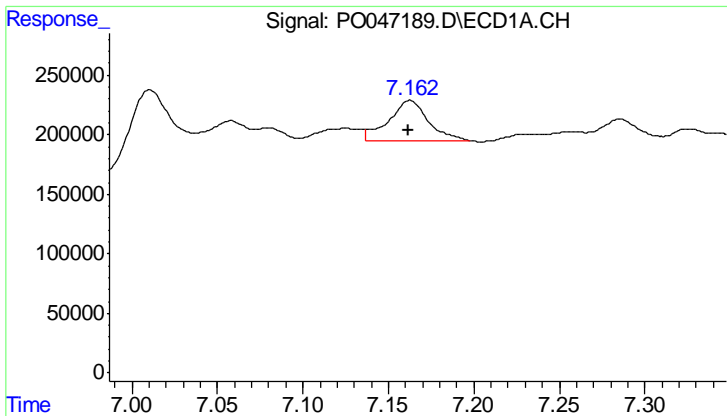
#2 Decachlorobiphenyl

R.T.: 10.090 min
 Delta R.T.: 0.006 min
 Response: 2919907
 Conc: 26.67 ng/ml



#2 Decachlorobiphenyl

R.T.: 8.647 min
 Delta R.T.: -0.018 min
 Response: 2658231
 Conc: 28.94 ng/ml



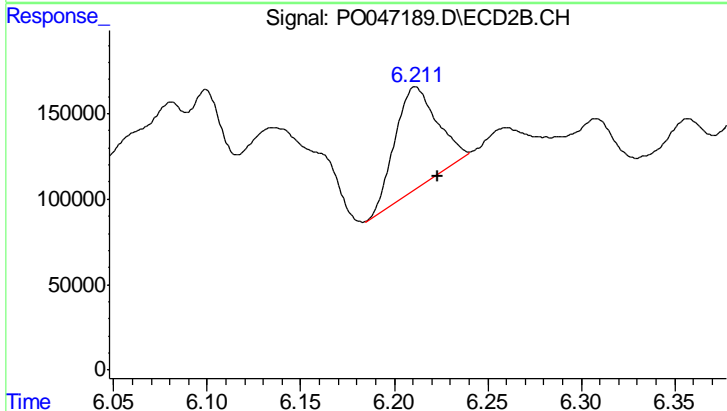
#31 AR-1260-1

R.T.: 7.162 min
 Delta R.T.: 0.000 min
 Response: 555255
 Conc: 92.46 ng/ml

Instrument :
 ECD_O
 ClientSampled :
 SB-1(3-5)

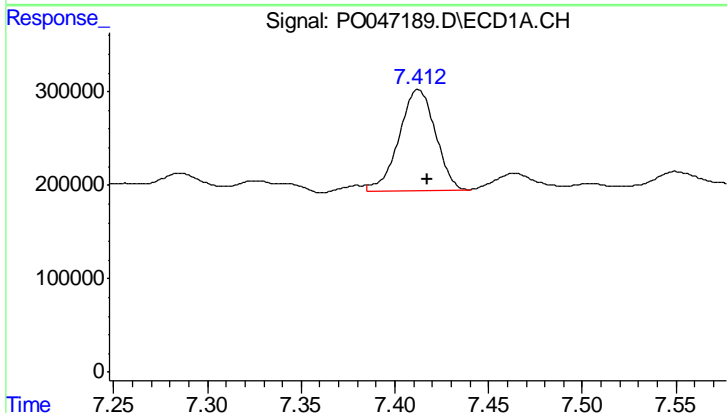
Manual Integrations
 APPROVED

Sohil
 7/26/2018 4:17:22 PM



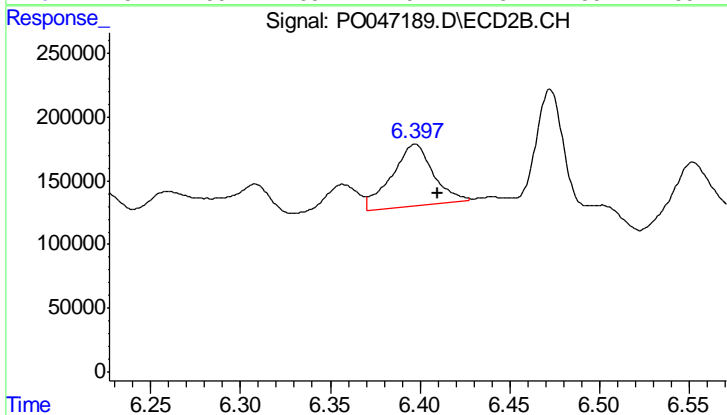
#31 AR-1260-1

R.T.: 6.211 min
 Delta R.T.: -0.012 min
 Response: 934921
 Conc: 157.72 ng/ml m



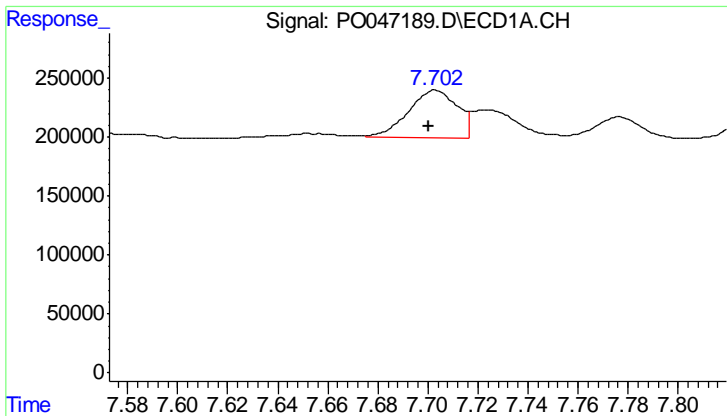
#32 AR-1260-2

R.T.: 7.412 min
 Delta R.T.: -0.006 min
 Response: 1473791
 Conc: 201.67 ng/ml m



#32 AR-1260-2

R.T.: 6.397 min
 Delta R.T.: -0.013 min
 Response: 780033
 Conc: 111.06 ng/ml m



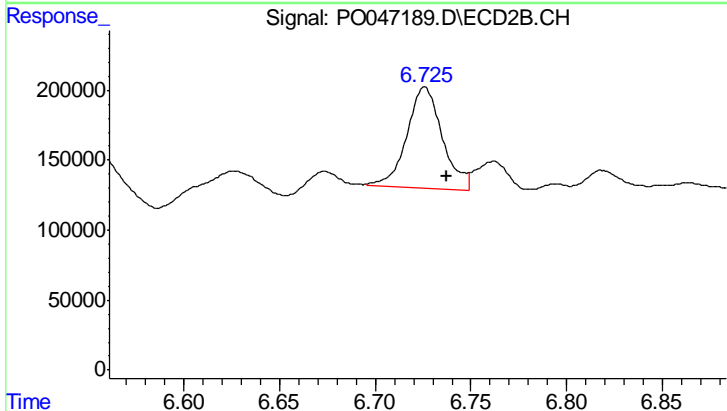
#33 AR-1260-3

R.T.: 7.702 min
 Delta R.T.: 0.002 min
 Response: 549959
 Conc: 64.14 ng/ml

Instrument :
 ECD_O
 ClientSampled :
 SB-1(3-5)

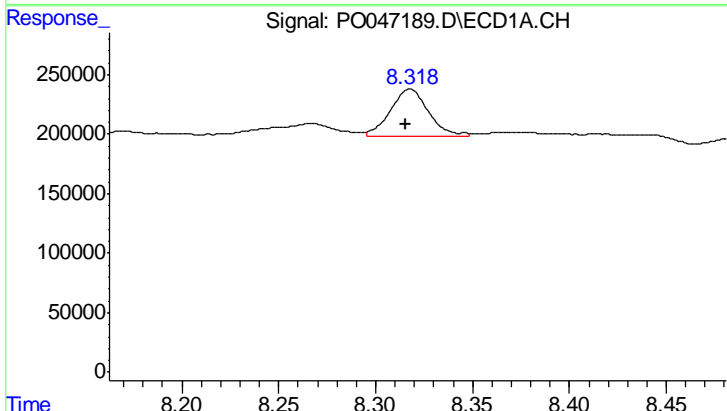
Manual Integrations
 APPROVED

Sohil
 7/26/2018 4:17:22 PM



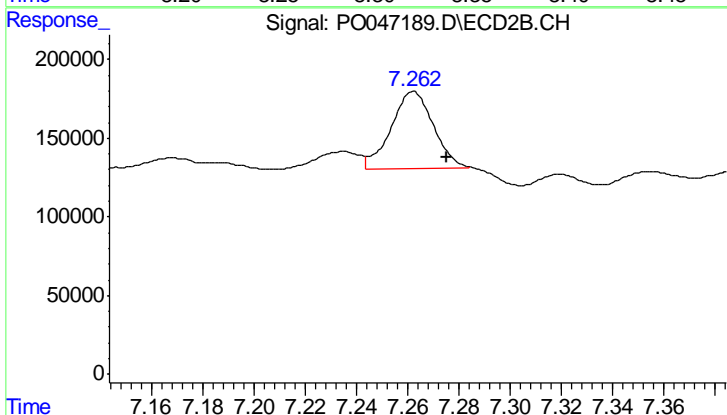
#33 AR-1260-3

R.T.: 6.725 min
 Delta R.T.: -0.012 min
 Response: 931596
 Conc: 124.09 ng/ml m



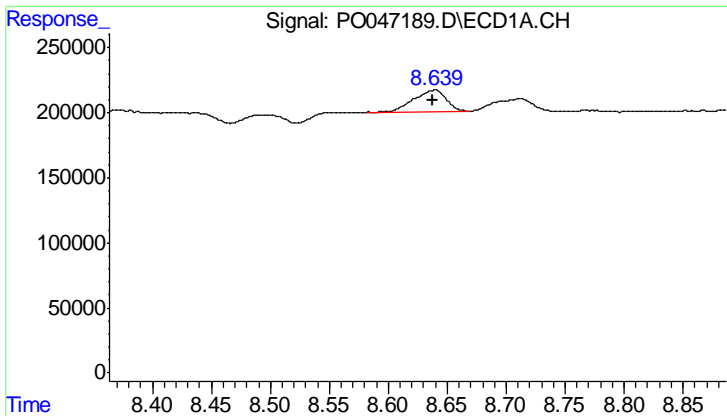
#34 AR-1260-4

R.T.: 8.318 min
 Delta R.T.: 0.002 min
 Response: 543638
 Conc: 44.91 ng/ml m



#34 AR-1260-4

R.T.: 7.262 min
 Delta R.T.: -0.013 min
 Response: 565253
 Conc: 48.47 ng/ml m



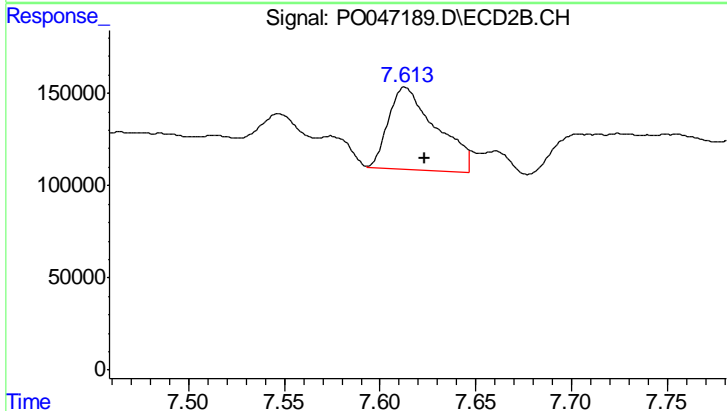
#35 AR-1260-5

R.T.: 8.639 min
 Delta R.T.: 0.002 min
 Response: 329680
 Conc: 44.69 ng/ml

Instrument :
 ECD_O
ClientSampled :
 SB-1(3-5)

Manual Integrations
APPROVED

Sohil
 7/26/2018 4:17:22 PM



#35 AR-1260-5

R.T.: 7.613 min
 Delta R.T.: -0.011 min
 Response: 768420
 Conc: 92.67 ng/ml m