

Data Path : Z:\pestpcbsrv\HPCHEM1\ECD_0\Data\P0073019\
 Data File : P0058551.D
 Signal(s) : Signal #1: ECD1A.CH Signal #2: ECD2B.CH
 Acq On : 29 Jul 2019 12:02
 Operator : SM/AJ
 Sample : I.BLK
 Misc :
 ALS Vial : 2 Sample Multiplier: 1

Instrument :
 ECD_0
 ClientSampleId :
 I.BLK

Integration File signal 1: autoint1.e
 Integration File signal 2: autoint2.e
 Quant Time: Jul 30 01:15:18 2019
 Quant Method : Z:\pestpcbsrv\HPCHEM1\ECD_0\methods\P0072819.M
 Quant Title : GC EXTRACTABLES
 QLast Update : Sat Jul 27 06:49:05 2019
 Response via : Initial Calibration
 Integrator: ChemStation 6890 Scale Mode: Small noise peaks clipped

Volume Inj. : 2 µl
 Signal #1 Phase : ZB-MR1 Signal #2 Phase: ZB-MR2
 Signal #1 Info : 30Mx0.32mmx 0.50µ Signal #2 Info : 30M x 0.32mm x 0.25µm

Compound	RT#1	RT#2	Resp#1	Resp#2	ng/ml	ng/ml
----------	------	------	--------	--------	-------	-------

 System Monitoring Compounds

1) SA Tetrachlo...	4.175	3.523	749767	696539	17.766	17.435
2) SA Decachlor...	9.663	8.412	976299	743991	18.028	18.848

Target Compounds

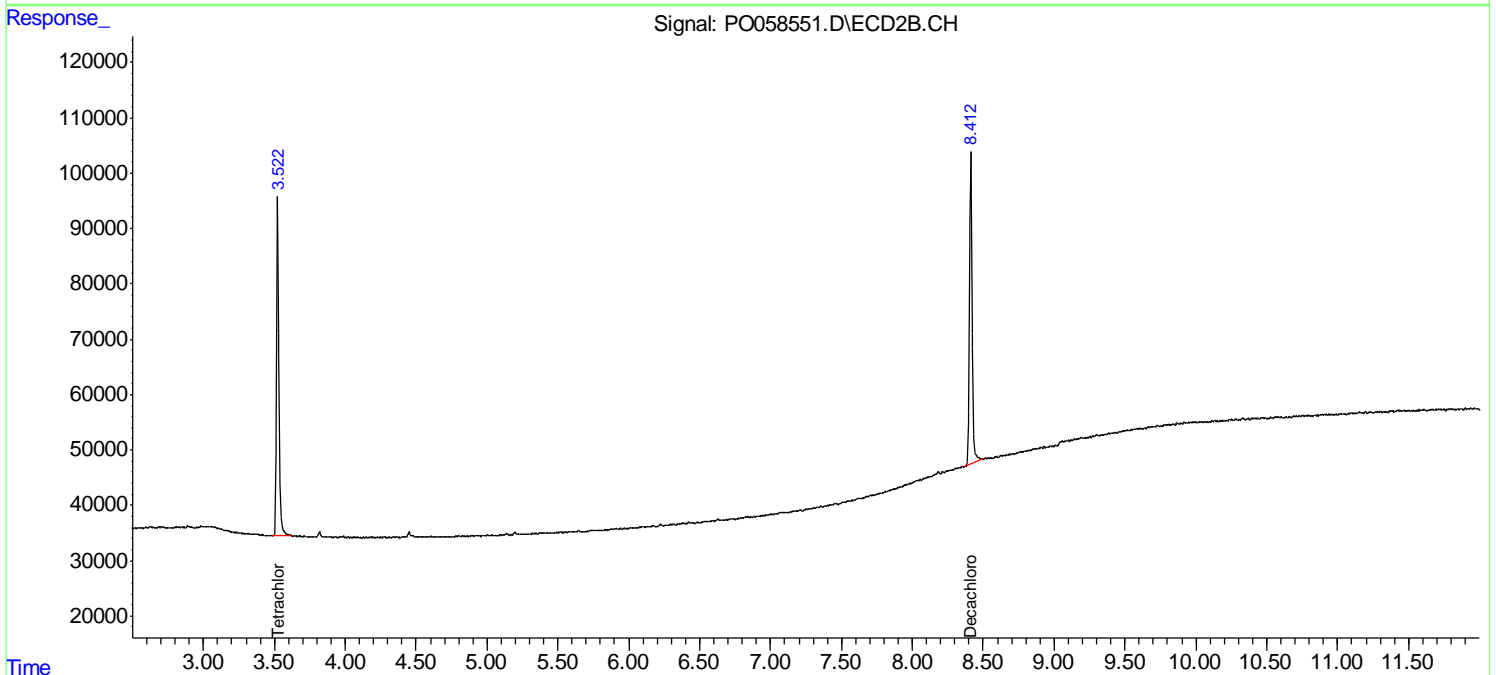
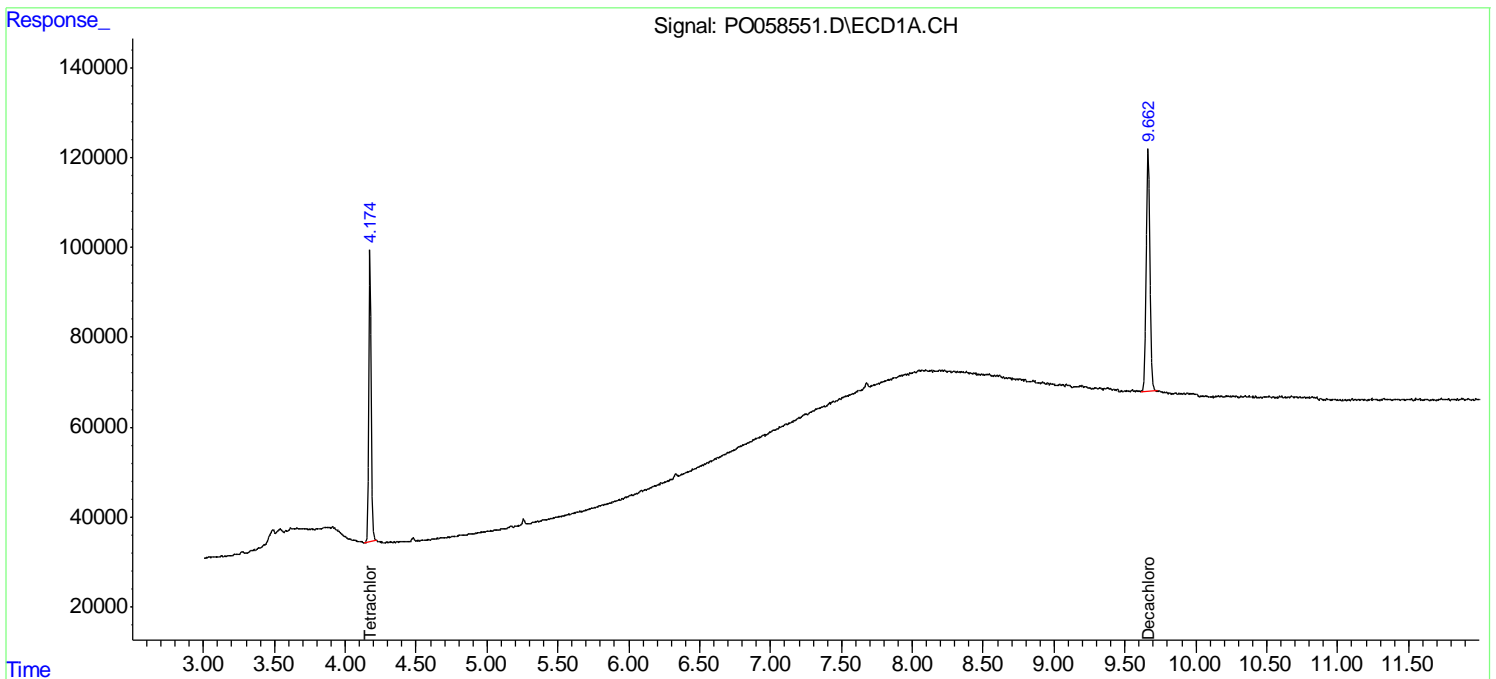
(f)=RT Delta > 1/2 Window (#)=Amounts differ by > 25% (m)=manual int.

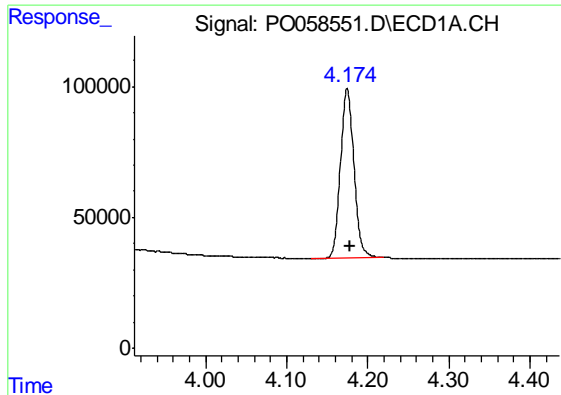
Data Path : Z:\pestpcbsrv\HPCHEM1\ECD_O\Data\P0073019\
 Data File : P0058551.D
 Signal(s) : Signal #1: ECD1A.CH Signal #2: ECD2B.CH
 Acq On : 29 Jul 2019 12:02
 Operator : SM/AJ
 Sample : I.BLK
 Misc :
 ALS Vial : 2 Sample Multiplier: 1

Instrument :
 ECD_O
 ClientSampleId :
 I.BLK

Integration File signal 1: autoint1.e
 Integration File signal 2: autoint2.e
 Quant Time: Jul 30 01:15:18 2019
 Quant Method : Z:\pestpcbsrv\HPCHEM1\ECD_O\methods\P0072819.M
 Quant Title : GC EXTRACTABLES
 QLast Update : Sat Jul 27 06:49:05 2019
 Response via : Initial Calibration
 Integrator: ChemStation 6890 Scale Mode: Small noise peaks clipped

Volume Inj. : 2 µl
 Signal #1 Phase : ZB-MR1 Signal #2 Phase: ZB-MR2
 Signal #1 Info : 30Mx0.32mmx 0.50µ Signal #2 Info : 30M x 0.32mm x 0.25µm

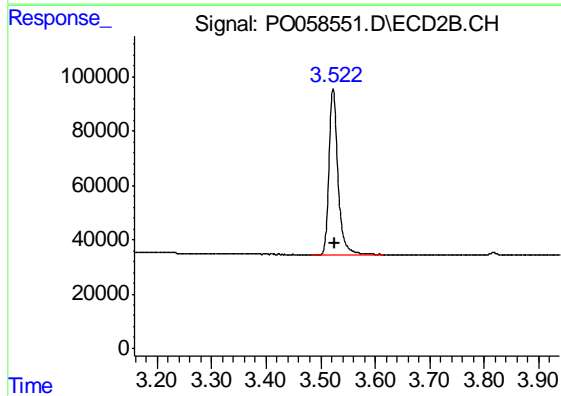




#1 Tetrachloro-m-xylene

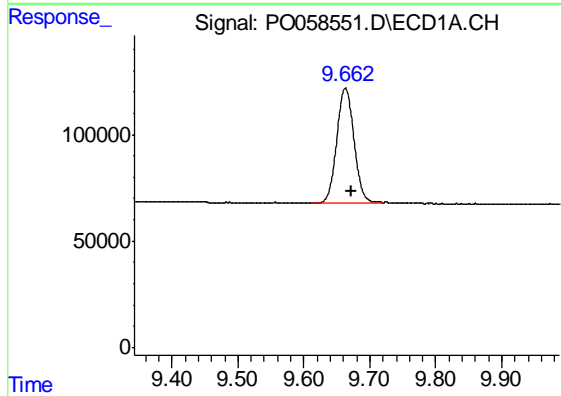
R.T.: 4.175 min
 Delta R.T.: -0.004 min
 Response: 749767
 Conc: 17.77 ng/ml

Instrument :
 ECD_O
 ClientSampled :
 I.BLK



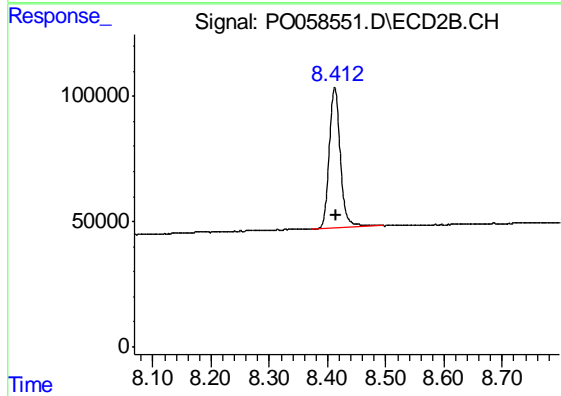
#1 Tetrachloro-m-xylene

R.T.: 3.523 min
 Delta R.T.: -0.002 min
 Response: 696539
 Conc: 17.44 ng/ml



#2 Decachlorobiphenyl

R.T.: 9.663 min
 Delta R.T.: -0.010 min
 Response: 976299
 Conc: 18.03 ng/ml



#2 Decachlorobiphenyl

R.T.: 8.412 min
 Delta R.T.: -0.002 min
 Response: 743991
 Conc: 18.85 ng/ml