

Data Path : Z:\pestpcbsrv\HPCHEM1\ECD\_0\Data\P0073019\  
 Data File : P0058556.D  
 Signal(s) : Signal #1: ECD1A.CH Signal #2: ECD2B.CH  
 Acq On : 29 Jul 2019 13:44  
 Operator : SM/AJ  
 Sample : K4012-05  
 Misc :  
 ALS Vial : 7 Sample Multiplier: 1

Instrument :  
 ECD\_0  
 ClientSampled :  
 OIL

Integration File signal 1: autoint1.e  
 Integration File signal 2: autoint2.e  
 Quant Time: Jul 30 01:17:45 2019  
 Quant Method : Z:\pestpcbsrv\HPCHEM1\ECD\_0\methods\P0072819.M  
 Quant Title : GC EXTRACTABLES  
 QLast Update : Sat Jul 27 06:49:05 2019  
 Response via : Initial Calibration  
 Integrator: ChemStation 6890 Scale Mode: Small noise peaks clipped

Volume Inj. : 2 µl  
 Signal #1 Phase : ZB-MR1 Signal #2 Phase: ZB-MR2  
 Signal #1 Info : 30Mx0.32mmx 0.50µ Signal #2 Info : 30M x 0.32mm x 0.25µm

Compound	RT#1	RT#2	Resp#1	Resp#2	ng/ml	ng/ml
-----						
System Monitoring Compounds						
1) SA Tetrachlo...	4.189	3.543	1007911	768431	23.883	19.235
2) SA Decachlor...	9.662	8.412	1163270	851731	21.480	21.578
Target Compounds						
3) L1 AR-1016-1	0.000	4.567	0	103213	N.D.	70.792 #
4) L1 AR-1016-2	0.000	4.567	0	103213	N.D.	48.082 #
5) L1 AR-1016-3	0.000	4.758	0	91123	N.D.	80.233 #
6) L1 AR-1016-4	0.000	4.809	0	60699	N.D.	64.348 #
7) L1 AR-1016-5	0.000	5.010	0	26982	N.D.	21.911 #
10) L2 AR-1221-3	0.000	3.939	0	110832	N.D.	115.859 #
11) L3 AR-1232-1	0.000	3.939	0	110832	N.D.	141.086 #
12) L3 AR-1232-2	0.000	4.567	0	103213	N.D.	122.076 #
13) L3 AR-1232-3	0.000	4.758	0	91123	N.D.	207.199 #
14) L3 AR-1232-4	0.000	4.856	0	95837	N.D.	242.459 #
15) L3 AR-1232-5	0.000	5.010	0	26982	N.D.	61.287 #
16) L4 AR-1242-1	0.000	4.567	0	103213	N.D.	101.671 #
17) L4 AR-1242-2	0.000	4.567	0	103213	N.D.	68.368 #
18) L4 AR-1242-3	0.000	4.758	0	91123	N.D.	111.891 #
19) L4 AR-1242-4	0.000	4.856	0	95837	N.D.	118.460 #
20) L4 AR-1242-5	0.000	5.407	0	37050	N.D.	34.540 #
21) L5 AR-1248-1	0.000	4.567	0	103213	N.D.	129.073 #
22) L5 AR-1248-2	0.000	4.809	0	60699	N.D.	54.783 #
23) L5 AR-1248-3	0.000	4.856	0	95837	N.D.	84.204 #
24) L5 AR-1248-4	0.000	5.010	0	26982	N.D.	19.314 #
25) L5 AR-1248-5	0.000	5.407	0	37050	N.D.	26.746 #
26) L6 AR-1254-1	0.000	5.407	0	37050	N.D.	14.302 #
27) L6 AR-1254-2	0.000	5.478	0	11995	N.D.	5.239 #
29) L6 AR-1254-4	0.000	6.179	0	16552	N.D.	7.118 #
30) L6 AR-1254-5	0.000	6.545	0	32188	N.D.	9.331 #
31) L7 AR-1260-1	0.000	6.085	0	35911	N.D.	15.088 #
32) L7 AR-1260-2	0.000	6.228	0	15513	N.D.	5.121 #
36) L8 AR-1262-1	0.000	6.545	0	32188	N.D.	9.012 #
38) L8 AR-1262-3	0.000	7.299	0	34322	N.D.	13.907 #
40) L8 AR-1262-5	0.000	7.879	0	6613	N.D.	3.889 #
41) L9 AR-1268-1	0.000	7.299	0	34322	N.D.	4.214 #
44) L9 AR-1268-4	0.000	7.879	0	6613	N.D.	2.850 #
-----						

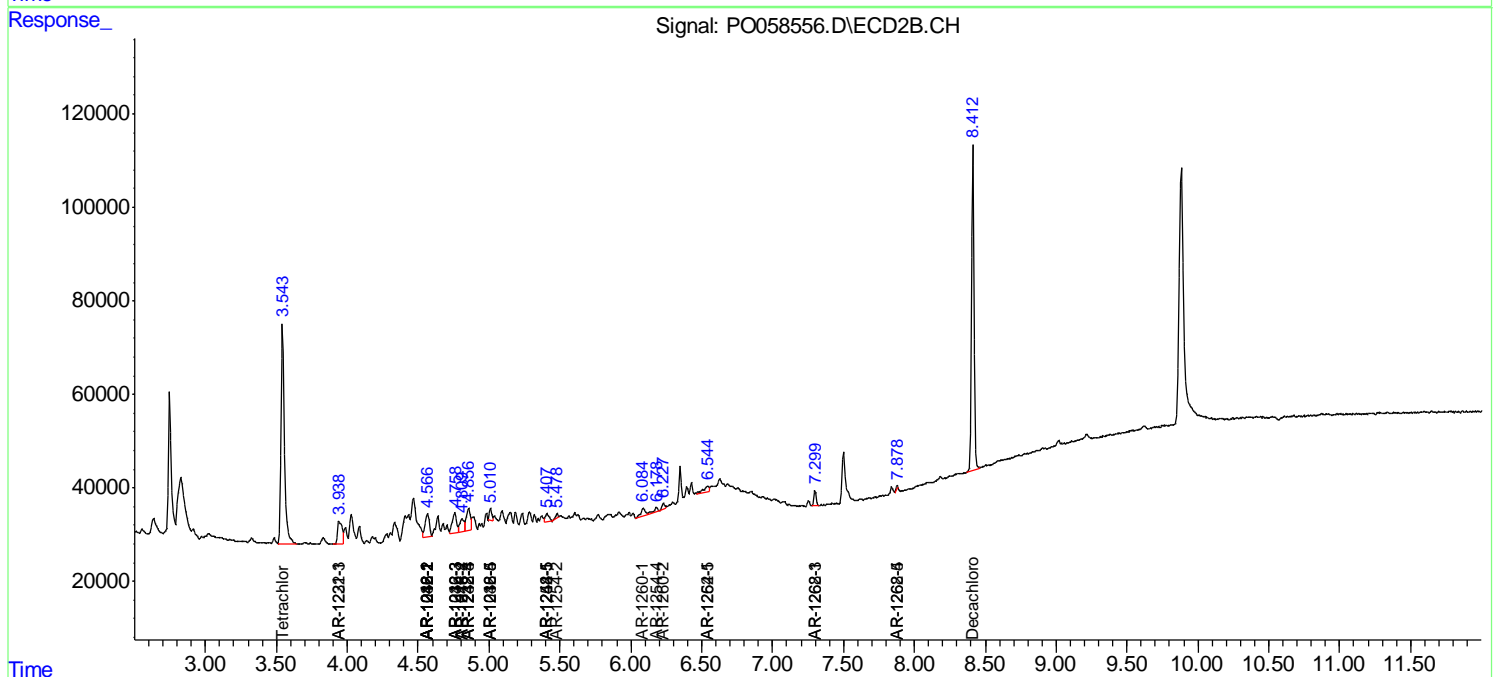
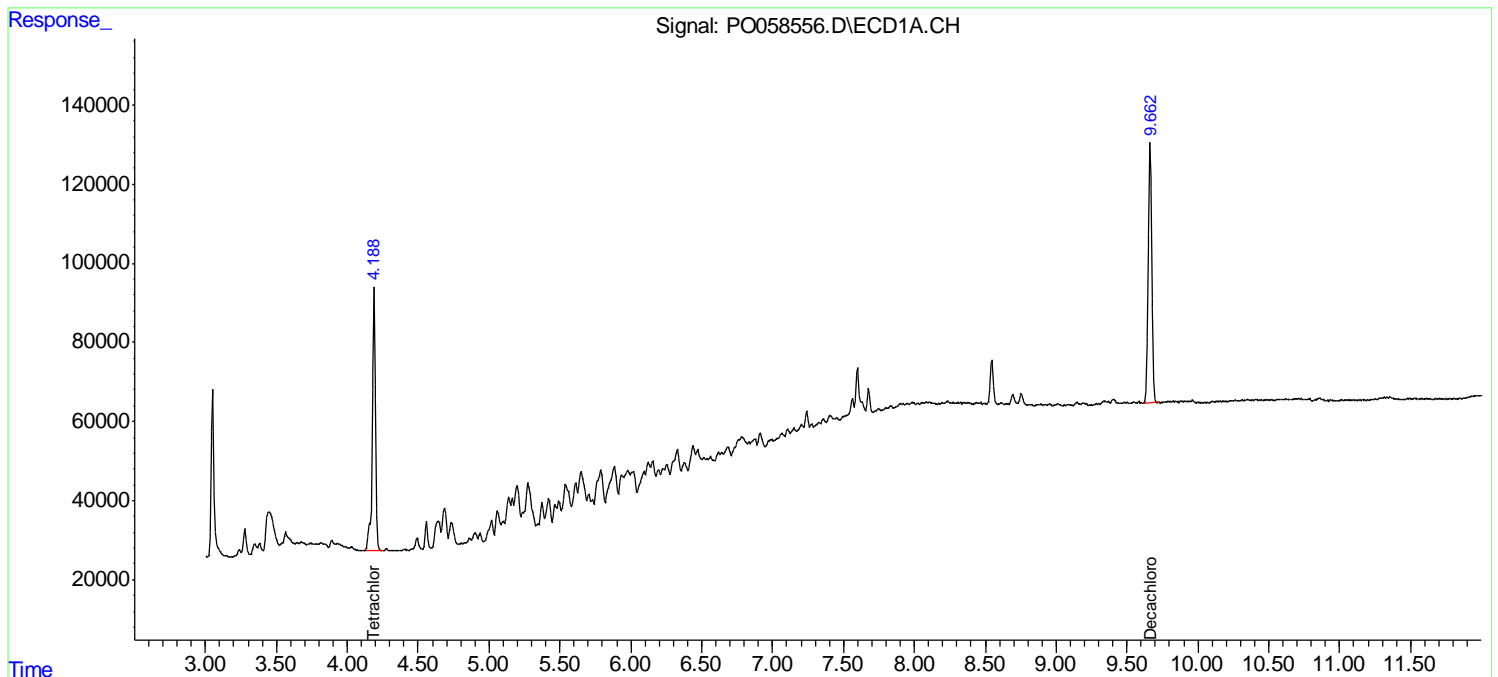
(f)=RT Delta > 1/2 Window (#)=Amounts differ by > 25% (m)=manual int.

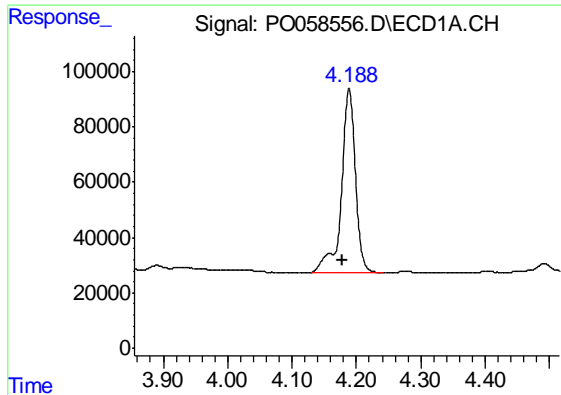
Data Path : Z:\pestpcbsrv\HPCHEM1\ECD\_O\Data\P0073019\  
Data File : P0058556.D  
Signal(s) : Signal #1: ECD1A.CH Signal #2: ECD2B.CH  
Acq On : 29 Jul 2019 13:44  
Operator : SM/AJ  
Sample : K4012-05  
Misc :  
ALS Vial : 7 Sample Multiplier: 1

Instrument :  
ECD\_O  
ClientSampled :  
OIL

Integration File signal 1: autoint1.e  
Integration File signal 2: autoint2.e  
Quant Time: Jul 30 01:17:45 2019  
Quant Method : Z:\pestpcbsrv\HPCHEM1\ECD\_O\methods\P0072819.M  
Quant Title : GC EXTRACTABLES  
QLast Update : Sat Jul 27 06:49:05 2019  
Response via : Initial Calibration  
Integrator: ChemStation 6890 Scale Mode: Small noise peaks clipped

Volume Inj. : 2 µl  
Signal #1 Phase : ZB-MR1 Signal #2 Phase: ZB-MR2  
Signal #1 Info : 30Mx0.32mmx 0.50µ Signal #2 Info : 30M x 0.32mm x 0.25µm

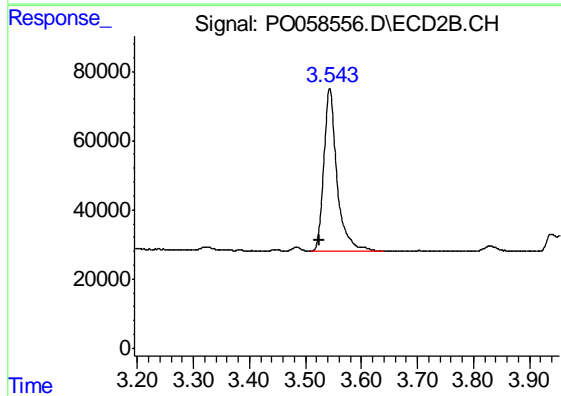




#1 Tetrachloro-m-xylene

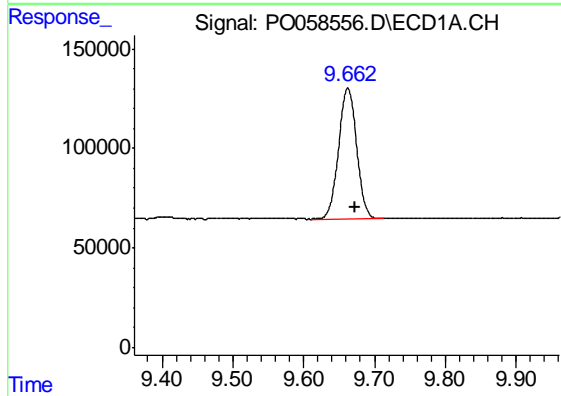
R.T.: 4.189 min  
 Delta R.T.: 0.010 min  
 Response: 1007911  
 Conc: 23.88 ng/ml

Instrument :  
 ECD\_O  
 ClientSampled :  
 OIL



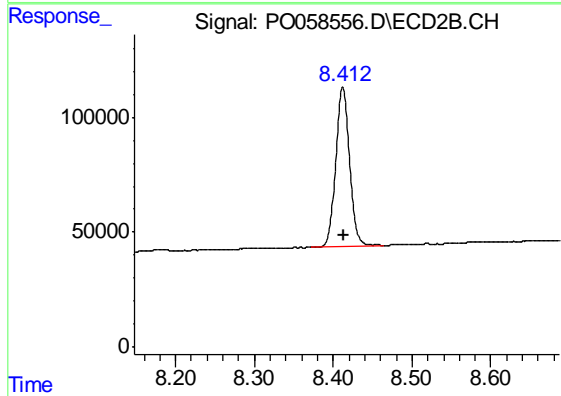
#1 Tetrachloro-m-xylene

R.T.: 3.543 min  
 Delta R.T.: 0.019 min  
 Response: 768431  
 Conc: 19.23 ng/ml



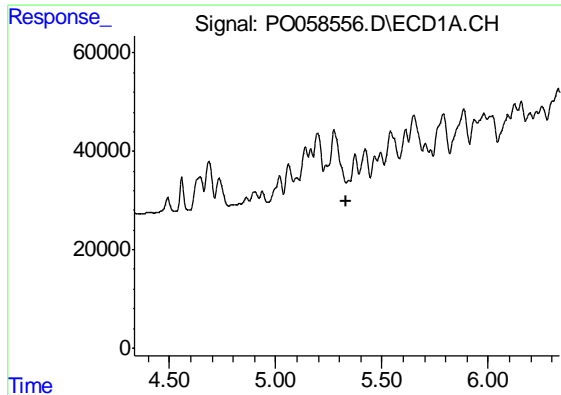
#2 Decachlorobiphenyl

R.T.: 9.662 min  
 Delta R.T.: -0.010 min  
 Response: 1163270  
 Conc: 21.48 ng/ml



#2 Decachlorobiphenyl

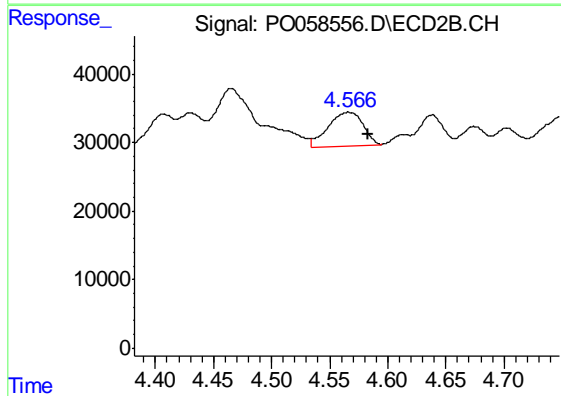
R.T.: 8.412 min  
 Delta R.T.: -0.002 min  
 Response: 851731  
 Conc: 21.58 ng/ml



#3 AR-1016-1

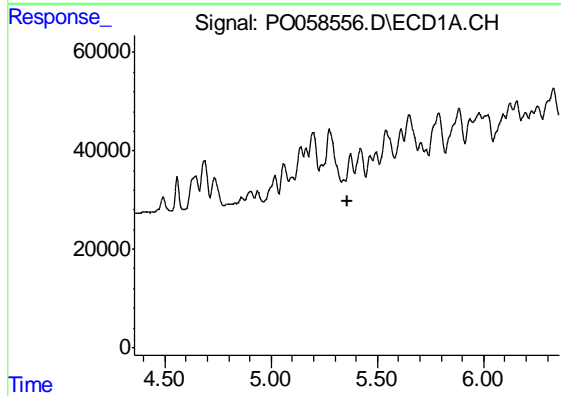
R.T.: 0.000 min  
 Exp R.T. : 5.335 min  
 Response: 0  
 Conc: N.D.

Instrument :  
 ECD\_O  
 ClientSampled :  
 OIL



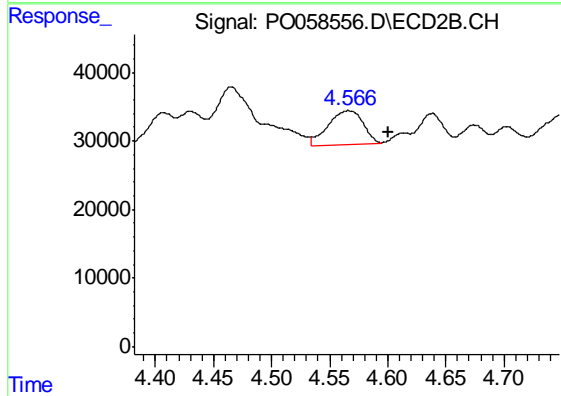
#3 AR-1016-1

R.T.: 4.567 min  
 Delta R.T.: -0.017 min  
 Response: 103213  
 Conc: 70.79 ng/ml



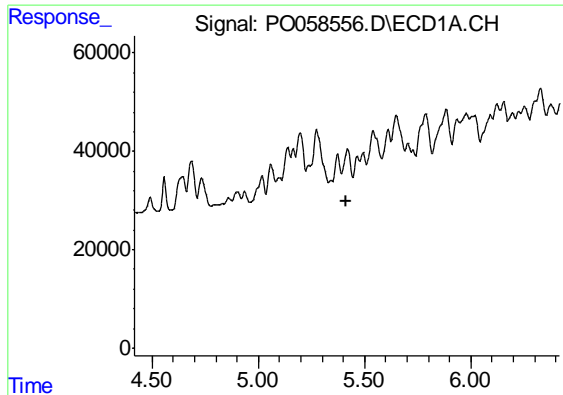
#4 AR-1016-2

R.T.: 0.000 min  
 Exp R.T. : 5.357 min  
 Response: 0  
 Conc: N.D.



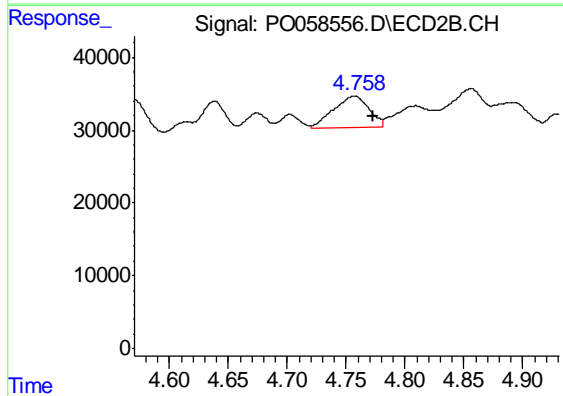
#4 AR-1016-2

R.T.: 4.567 min  
 Delta R.T.: -0.034 min  
 Response: 103213  
 Conc: 48.08 ng/ml

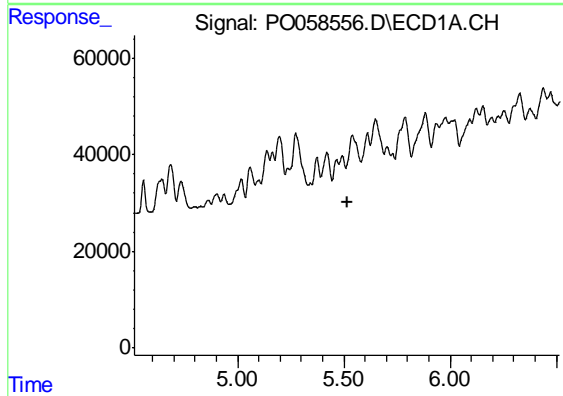


#5 AR-1016-3  
 R.T.: 0.000 min  
 Exp R.T. : 5.417 min  
 Response: 0  
 Conc: N.D.

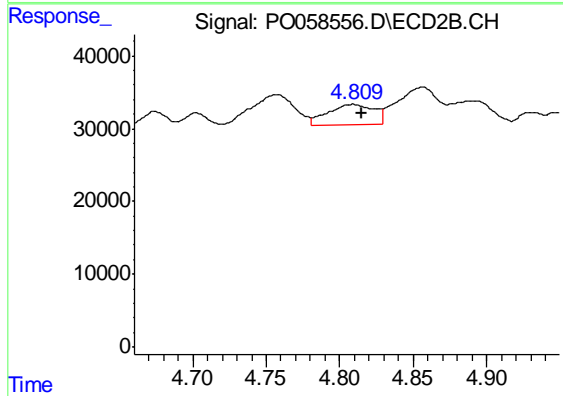
Instrument :  
 ECD\_O  
 ClientSampled :  
 OIL



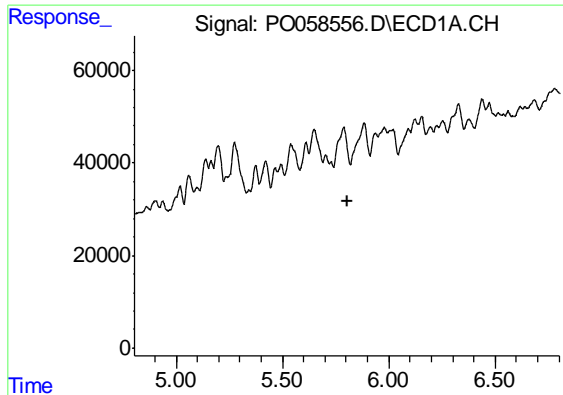
#5 AR-1016-3  
 R.T.: 4.758 min  
 Delta R.T.: -0.016 min  
 Response: 91123  
 Conc: 80.23 ng/ml



#6 AR-1016-4  
 R.T.: 0.000 min  
 Exp R.T. : 5.515 min  
 Response: 0  
 Conc: N.D.



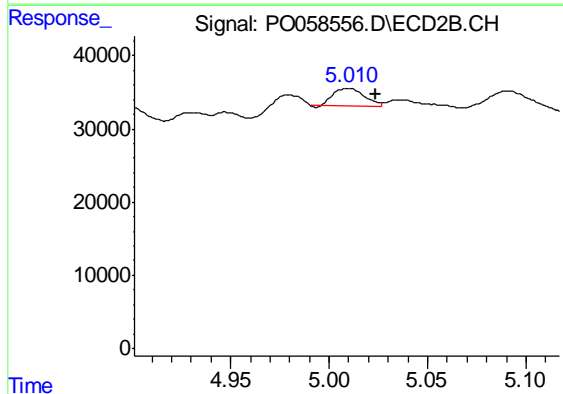
#6 AR-1016-4  
 R.T.: 4.809 min  
 Delta R.T.: -0.006 min  
 Response: 60699  
 Conc: 64.35 ng/ml



#7 AR-1016-5

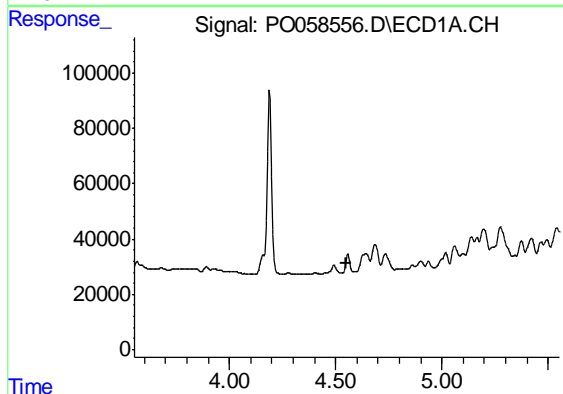
R.T.: 0.000 min  
 Exp R.T. : 5.803 min  
 Response: 0  
 Conc: N.D.

Instrument :  
 ECD\_O  
 ClientSampled :  
 OIL



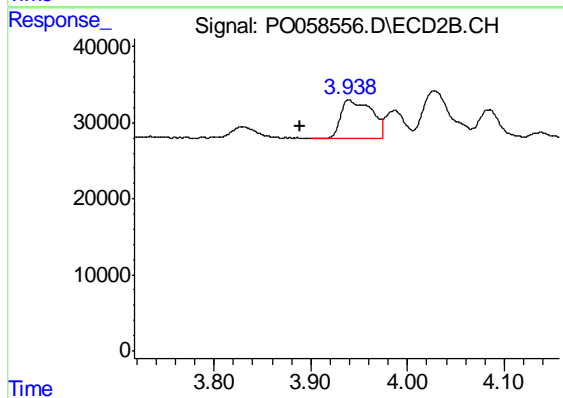
#7 AR-1016-5

R.T.: 5.010 min  
 Delta R.T.: -0.014 min  
 Response: 26982  
 Conc: 21.91 ng/ml



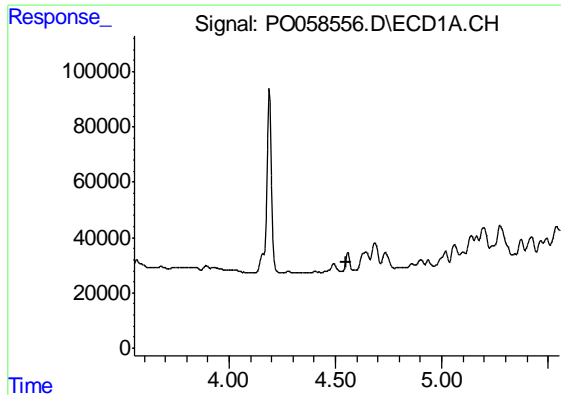
#10 AR-1221-3

R.T.: 0.000 min  
 Exp R.T. : 4.553 min  
 Response: 0  
 Conc: N.D.



#10 AR-1221-3

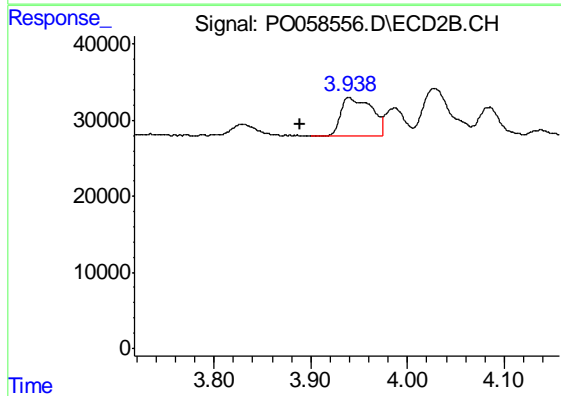
R.T.: 3.939 min  
 Delta R.T.: 0.050 min  
 Response: 110832  
 Conc: 115.86 ng/ml



#11 AR-1232-1

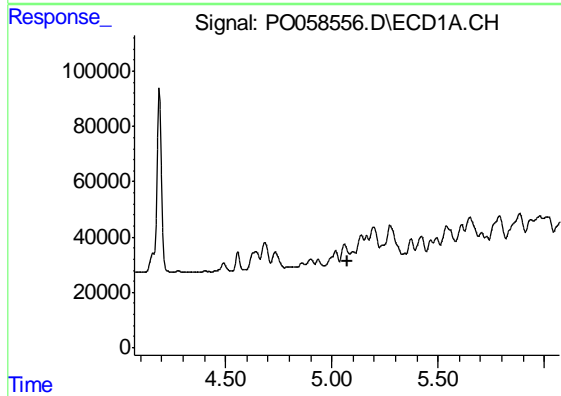
R.T.: 0.000 min  
 Exp R.T. : 4.554 min  
 Response: 0  
 Conc: N.D.

Instrument :  
 ECD\_O  
 ClientSampled :  
 OIL



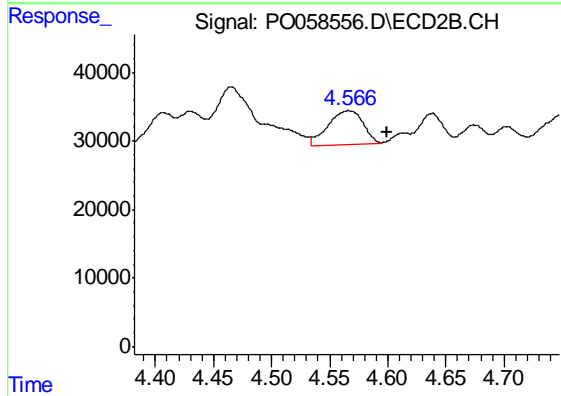
#11 AR-1232-1

R.T.: 3.939 min  
 Delta R.T.: 0.050 min  
 Response: 110832  
 Conc: 141.09 ng/ml



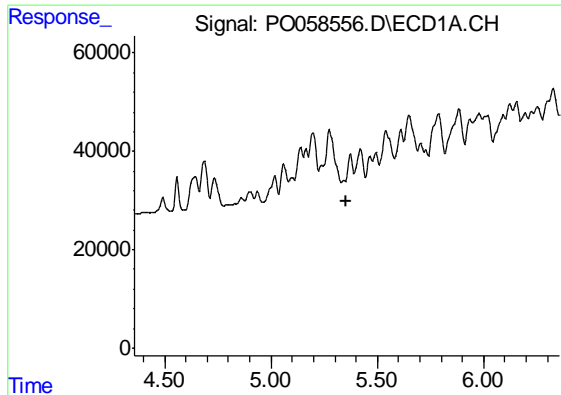
#12 AR-1232-2

R.T.: 0.000 min  
 Exp R.T. : 5.072 min  
 Response: 0  
 Conc: N.D.



#12 AR-1232-2

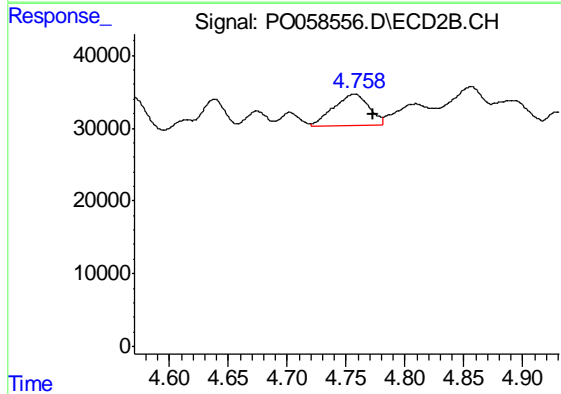
R.T.: 4.567 min  
 Delta R.T.: -0.033 min  
 Response: 103213  
 Conc: 122.08 ng/ml



#13 AR-1232-3

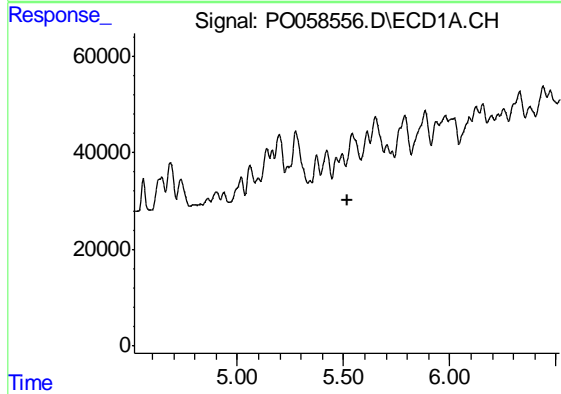
R.T.: 0.000 min  
 Exp R.T. : 5.357 min  
 Response: 0  
 Conc: N.D.

Instrument :  
 ECD\_O  
 ClientSampled :  
 OIL



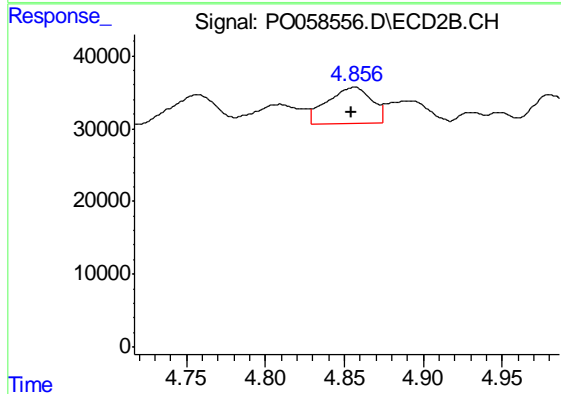
#13 AR-1232-3

R.T.: 4.758 min  
 Delta R.T.: -0.015 min  
 Response: 91123  
 Conc: 207.20 ng/ml



#14 AR-1232-4

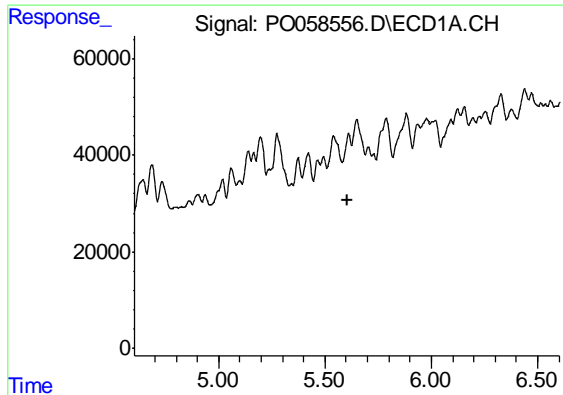
R.T.: 0.000 min  
 Exp R.T. : 5.516 min  
 Response: 0  
 Conc: N.D.



#14 AR-1232-4

R.T.: 4.856 min  
 Delta R.T.: 0.002 min  
 Response: 95837  
 Conc: 242.46 ng/ml

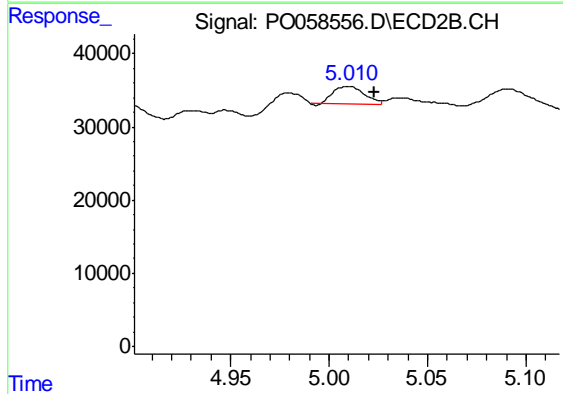




#15 AR-1232-5

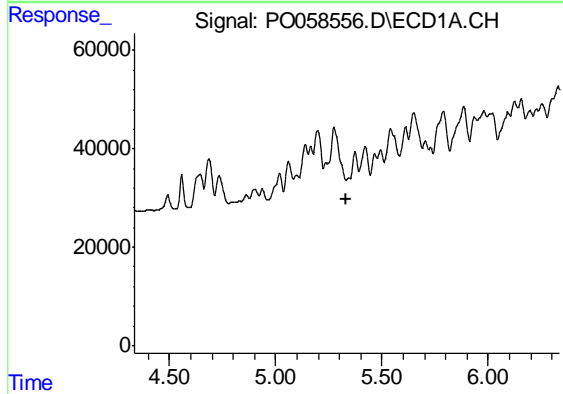
R.T.: 0.000 min  
 Exp R.T. : 5.603 min  
 Response: 0  
 Conc: N.D.

Instrument :  
 ECD\_O  
 ClientSampled :  
 OIL



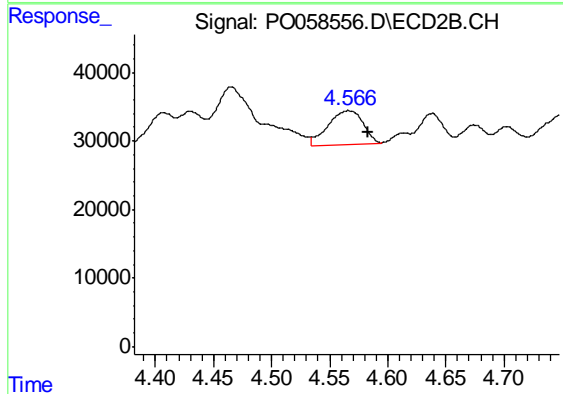
#15 AR-1232-5

R.T.: 5.010 min  
 Delta R.T.: -0.013 min  
 Response: 26982  
 Conc: 61.29 ng/ml



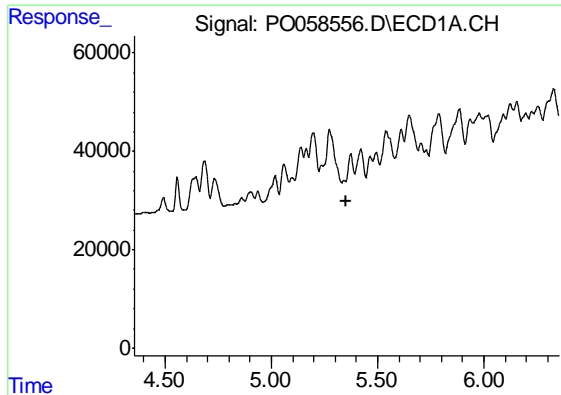
#16 AR-1242-1

R.T.: 0.000 min  
 Exp R.T. : 5.335 min  
 Response: 0  
 Conc: N.D.



#16 AR-1242-1

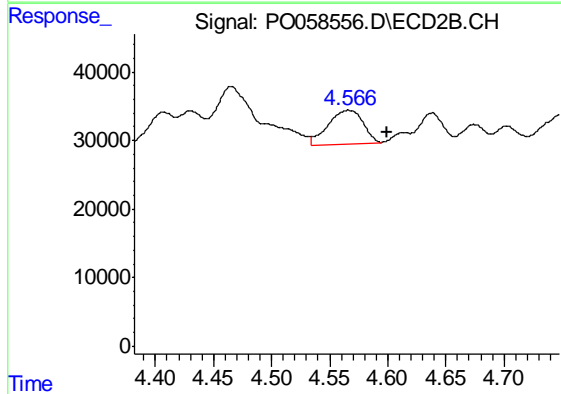
R.T.: 4.567 min  
 Delta R.T.: -0.016 min  
 Response: 103213  
 Conc: 101.67 ng/ml



#17 AR-1242-2

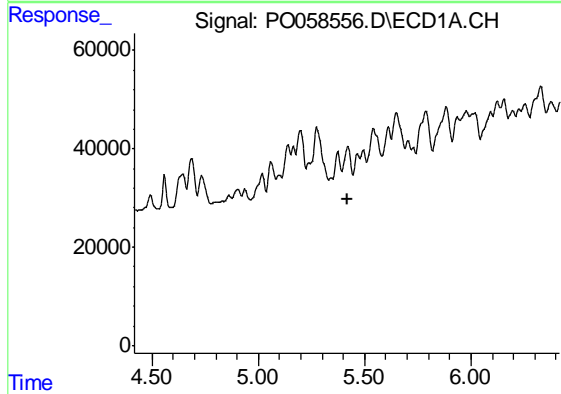
R.T.: 0.000 min  
 Exp R.T. : 5.356 min  
 Response: 0  
 Conc: N.D.

Instrument :  
 ECD\_O  
 ClientSampled :  
 OIL



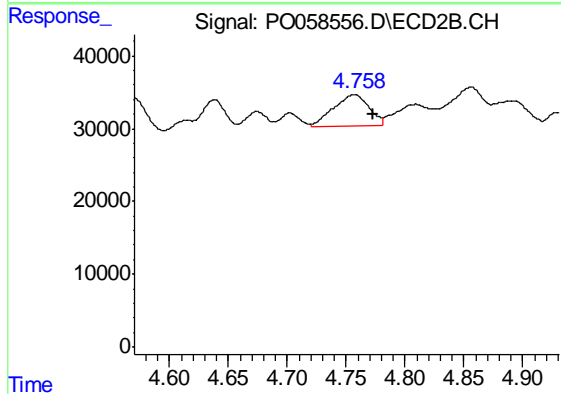
#17 AR-1242-2

R.T.: 4.567 min  
 Delta R.T.: -0.033 min  
 Response: 103213  
 Conc: 68.37 ng/ml



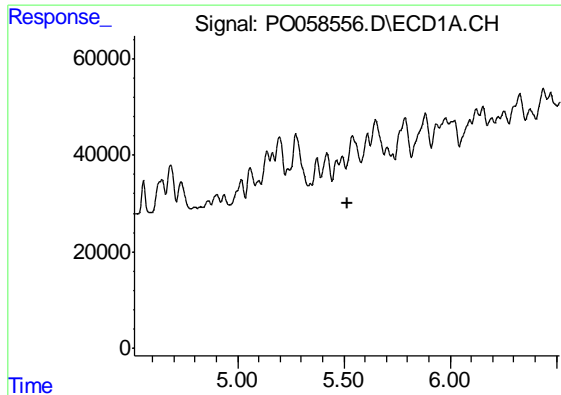
#18 AR-1242-3

R.T.: 0.000 min  
 Exp R.T. : 5.417 min  
 Response: 0  
 Conc: N.D.



#18 AR-1242-3

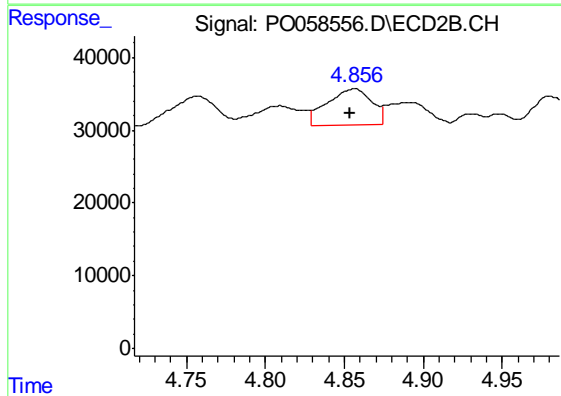
R.T.: 4.758 min  
 Delta R.T.: -0.015 min  
 Response: 91123  
 Conc: 111.89 ng/ml



#19 AR-1242-4

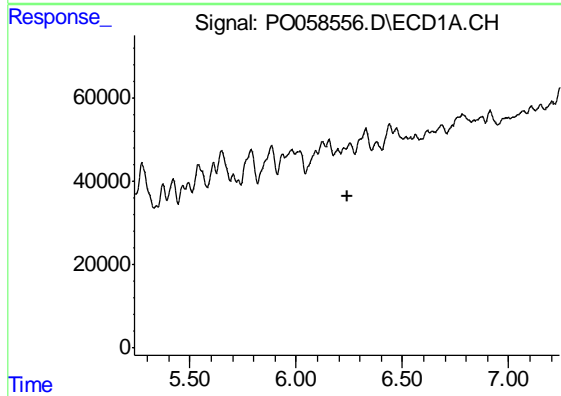
R.T.: 0.000 min  
 Exp R.T. : 5.515 min  
 Response: 0  
 Conc: N.D.

Instrument :  
 ECD\_O  
 ClientSampled :  
 OIL



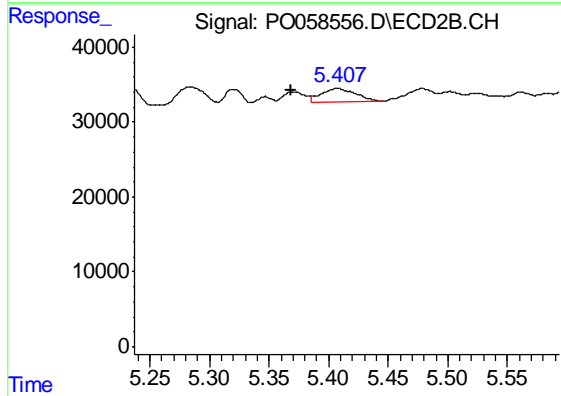
#19 AR-1242-4

R.T.: 4.856 min  
 Delta R.T.: 0.002 min  
 Response: 95837  
 Conc: 118.46 ng/ml



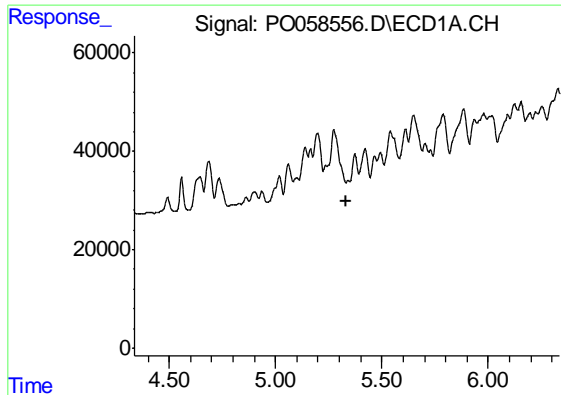
#20 AR-1242-5

R.T.: 0.000 min  
 Exp R.T. : 6.239 min  
 Response: 0  
 Conc: N.D.



#20 AR-1242-5

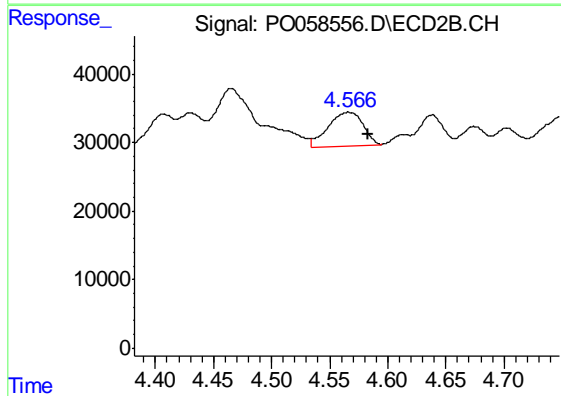
R.T.: 5.407 min  
 Delta R.T.: 0.039 min  
 Response: 37050  
 Conc: 34.54 ng/ml



#21 AR-1248-1

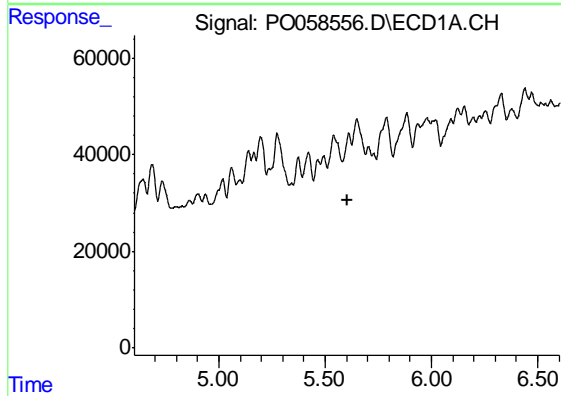
R.T.: 0.000 min  
 Exp R.T. : 5.335 min  
 Response: 0  
 Conc: N.D.

Instrument :  
 ECD\_O  
 ClientSampled :  
 OIL



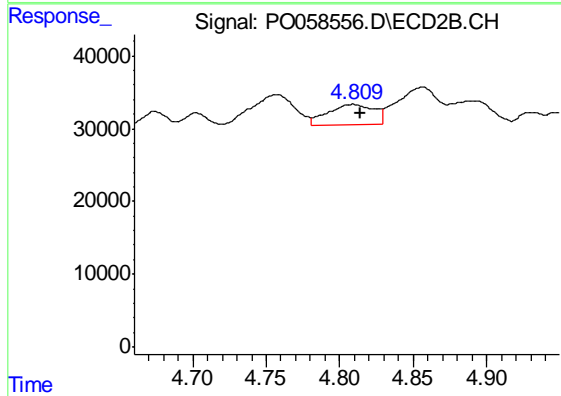
#21 AR-1248-1

R.T.: 4.567 min  
 Delta R.T.: -0.016 min  
 Response: 103213  
 Conc: 129.07 ng/ml



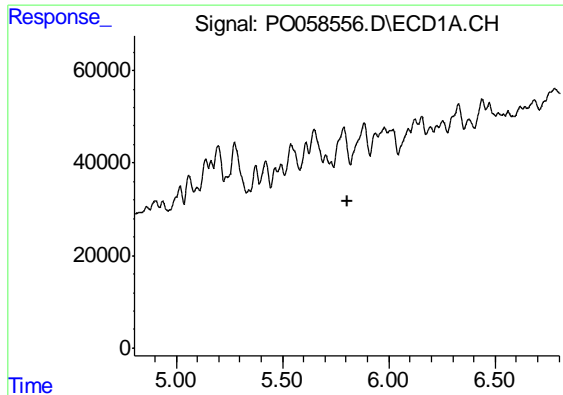
#22 AR-1248-2

R.T.: 0.000 min  
 Exp R.T. : 5.602 min  
 Response: 0  
 Conc: N.D.



#22 AR-1248-2

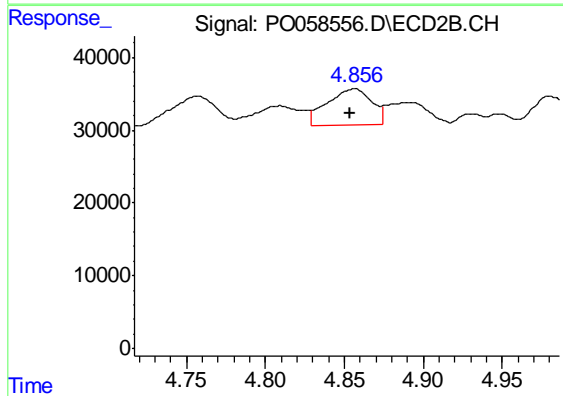
R.T.: 4.809 min  
 Delta R.T.: -0.005 min  
 Response: 60699  
 Conc: 54.78 ng/ml



#23 AR-1248-3

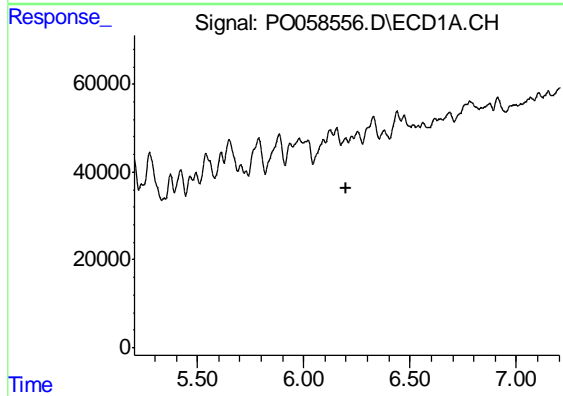
R.T.: 0.000 min  
 Exp R.T. : 5.803 min  
 Response: 0  
 Conc: N.D.

Instrument :  
 ECD\_O  
 ClientSampled :  
 OIL



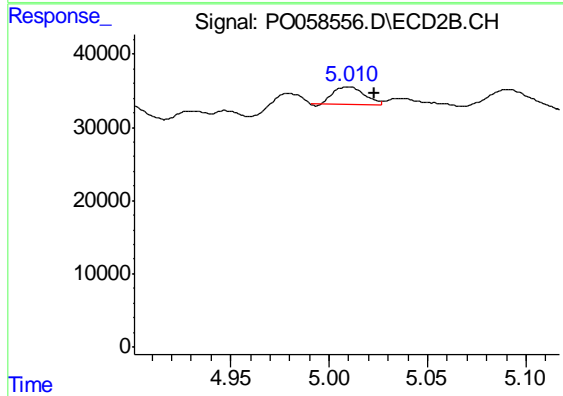
#23 AR-1248-3

R.T.: 4.856 min  
 Delta R.T.: 0.002 min  
 Response: 95837  
 Conc: 84.20 ng/ml



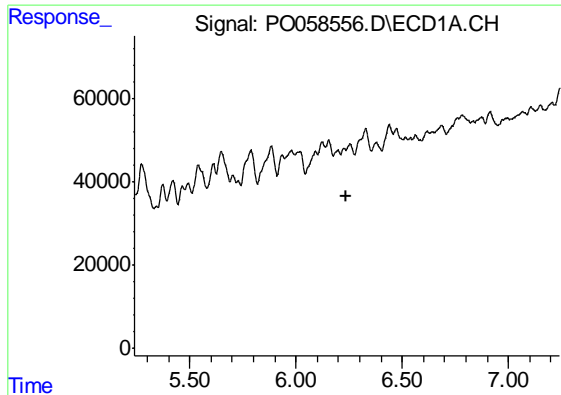
#24 AR-1248-4

R.T.: 0.000 min  
 Exp R.T. : 6.203 min  
 Response: 0  
 Conc: N.D.



#24 AR-1248-4

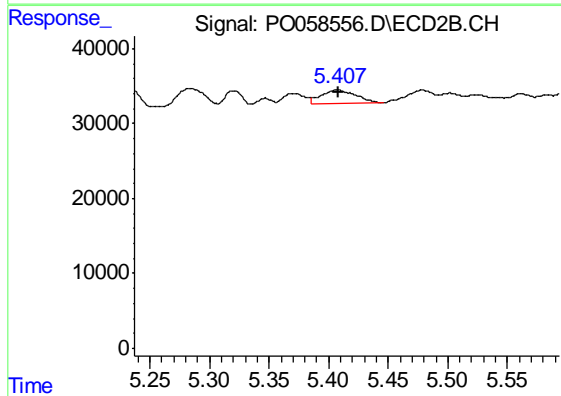
R.T.: 5.010 min  
 Delta R.T.: -0.013 min  
 Response: 26982  
 Conc: 19.31 ng/ml



#25 AR-1248-5

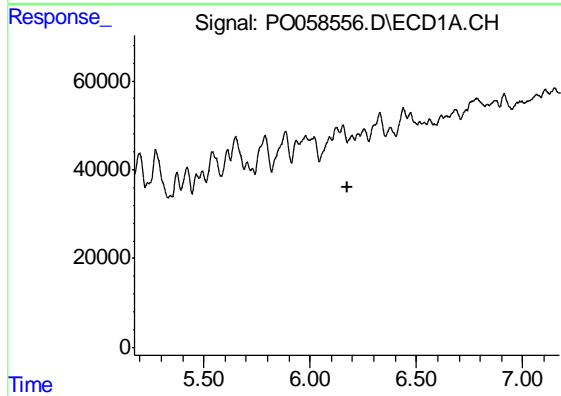
R.T.: 0.000 min  
 Exp R.T. : 6.239 min  
 Response: 0  
 Conc: N.D.

Instrument :  
 ECD\_O  
 ClientSampled :  
 OIL



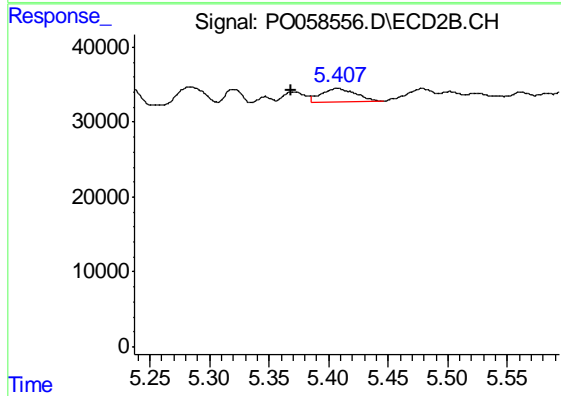
#25 AR-1248-5

R.T.: 5.407 min  
 Delta R.T.: -0.001 min  
 Response: 37050  
 Conc: 26.75 ng/ml



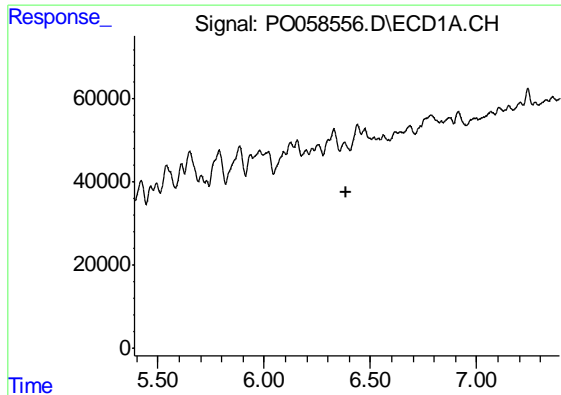
#26 AR-1254-1

R.T.: 0.000 min  
 Exp R.T. : 6.173 min  
 Response: 0  
 Conc: N.D.



#26 AR-1254-1

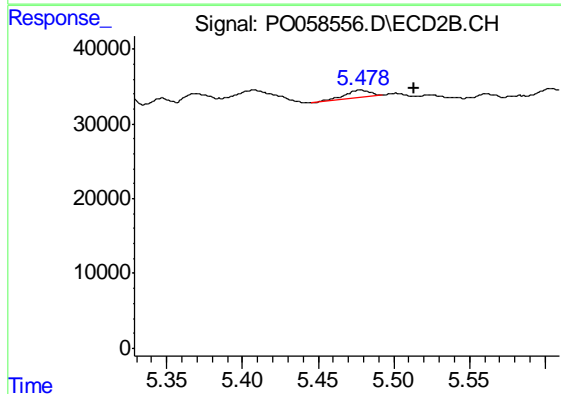
R.T.: 5.407 min  
 Delta R.T.: 0.039 min  
 Response: 37050  
 Conc: 14.30 ng/ml



#27 AR-1254-2

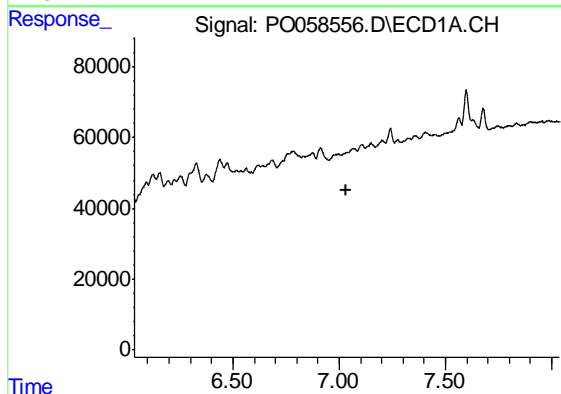
R.T.: 0.000 min  
 Exp R.T. : 6.389 min  
 Response: 0  
 Conc: N.D.

Instrument :  
 ECD\_O  
 ClientSampled :  
 OIL



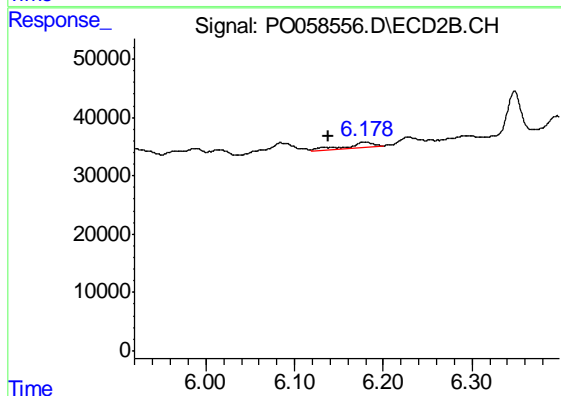
#27 AR-1254-2

R.T.: 5.478 min  
 Delta R.T.: -0.035 min  
 Response: 11995  
 Conc: 5.24 ng/ml



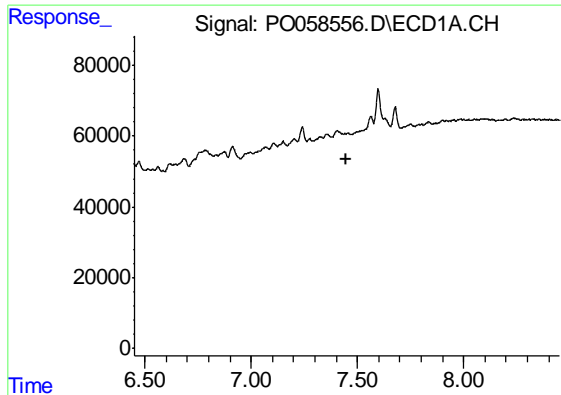
#29 AR-1254-4

R.T.: 0.000 min  
 Exp R.T. : 7.036 min  
 Response: 0  
 Conc: N.D.



#29 AR-1254-4

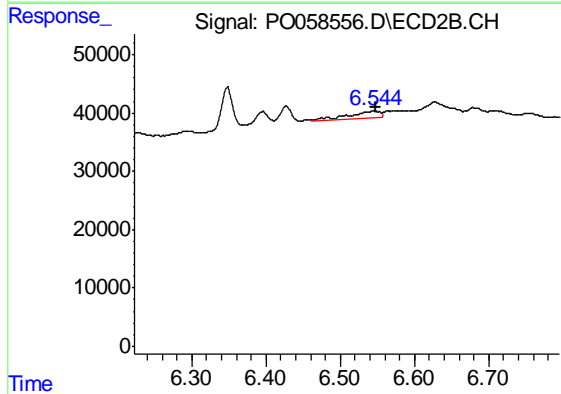
R.T.: 6.179 min  
 Delta R.T.: 0.041 min  
 Response: 16552  
 Conc: 7.12 ng/ml



#30 AR-1254-5

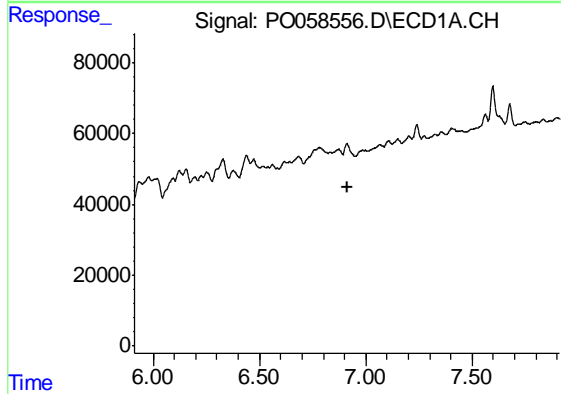
R.T.: 0.000 min  
 Exp R.T. : 7.450 min  
 Response: 0  
 Conc: N.D.

Instrument :  
 ECD\_O  
 ClientSampled :  
 OIL



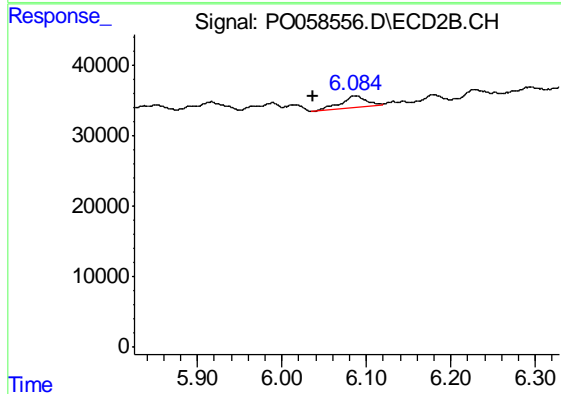
#30 AR-1254-5

R.T.: 6.545 min  
 Delta R.T.: -0.003 min  
 Response: 32188  
 Conc: 9.33 ng/ml



#31 AR-1260-1

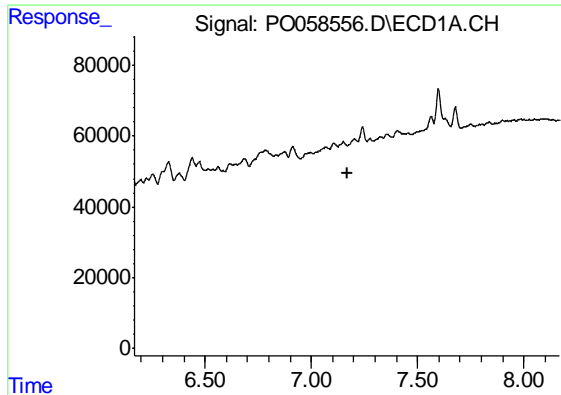
R.T.: 0.000 min  
 Exp R.T. : 6.912 min  
 Response: 0  
 Conc: N.D.



#31 AR-1260-1

R.T.: 6.085 min  
 Delta R.T.: 0.048 min  
 Response: 35911  
 Conc: 15.09 ng/ml

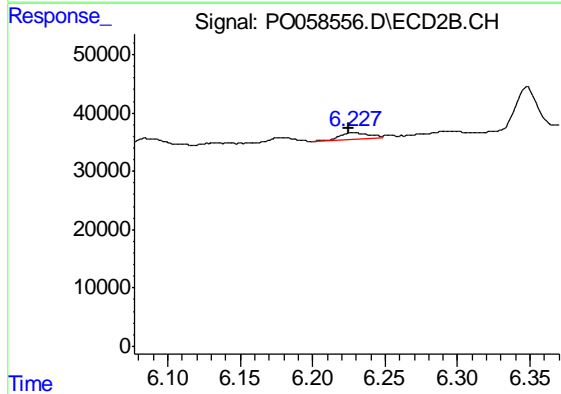




#32 AR-1260-2

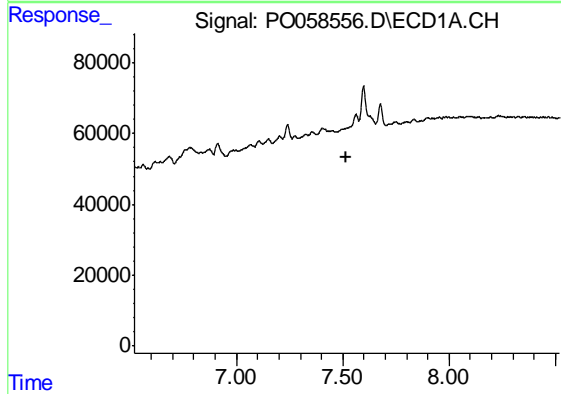
R.T.: 0.000 min  
 Exp R.T. : 7.167 min  
 Response: 0  
 Conc: N.D.

Instrument :  
 ECD\_O  
 ClientSampled :  
 OIL



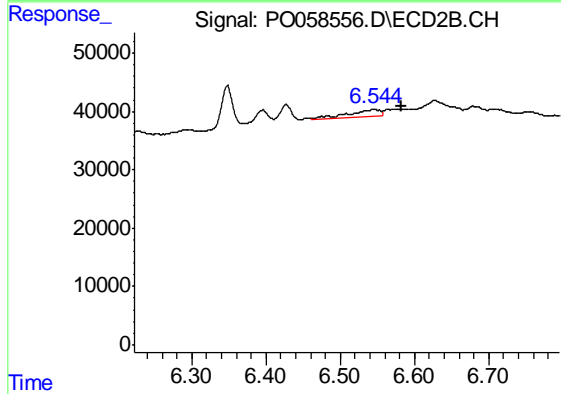
#32 AR-1260-2

R.T.: 6.228 min  
 Delta R.T.: 0.004 min  
 Response: 15513  
 Conc: 5.12 ng/ml



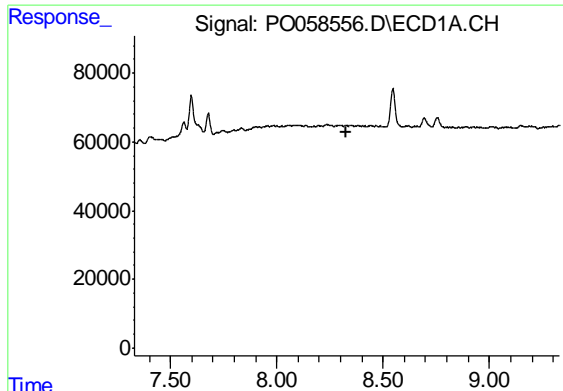
#36 AR-1262-1

R.T.: 0.000 min  
 Exp R.T. : 7.520 min  
 Response: 0  
 Conc: N.D.



#36 AR-1262-1

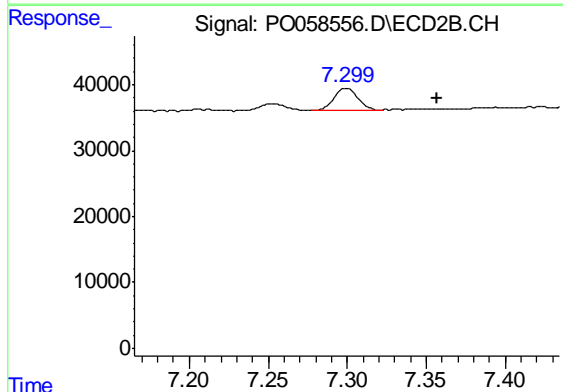
R.T.: 6.545 min  
 Delta R.T.: -0.038 min  
 Response: 32188  
 Conc: 9.01 ng/ml



#38 AR-1262-3

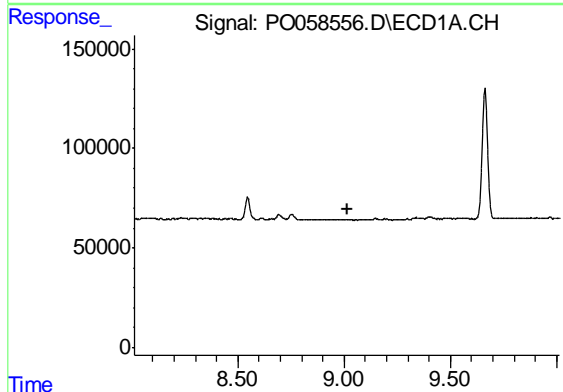
R.T.: 0.000 min  
 Exp R.T. : 8.330 min  
 Response: 0  
 Conc: N.D.

Instrument :  
 ECD\_O  
 ClientSampled :  
 OIL



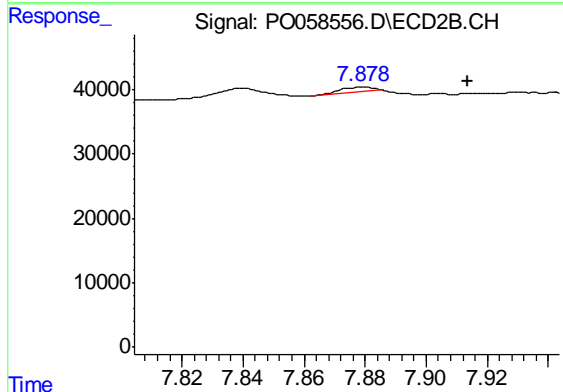
#38 AR-1262-3

R.T.: 7.299 min  
 Delta R.T.: -0.057 min  
 Response: 34322  
 Conc: 13.91 ng/ml



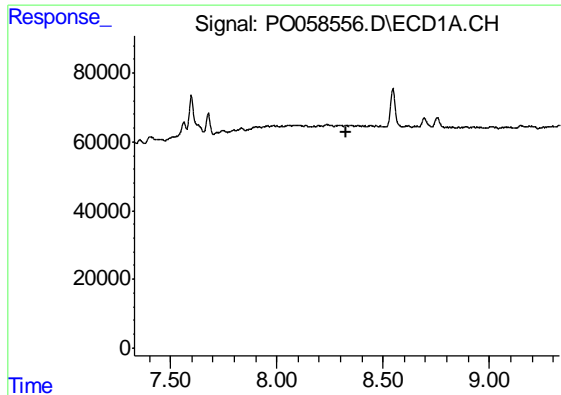
#40 AR-1262-5

R.T.: 0.000 min  
 Exp R.T. : 9.013 min  
 Response: 0  
 Conc: N.D.



#40 AR-1262-5

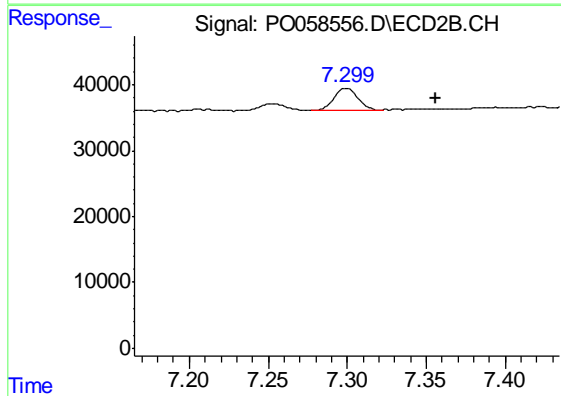
R.T.: 7.879 min  
 Delta R.T.: -0.034 min  
 Response: 6613  
 Conc: 3.89 ng/ml



#41 AR-1268-1

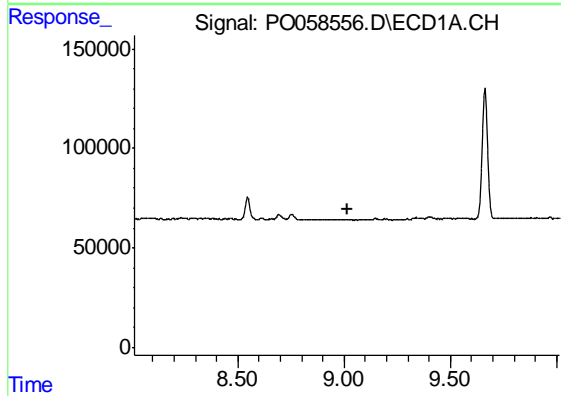
R.T.: 0.000 min  
 Exp R.T. : 8.330 min  
 Response: 0  
 Conc: N.D.

Instrument :  
 ECD\_O  
 ClientSampled :  
 OIL



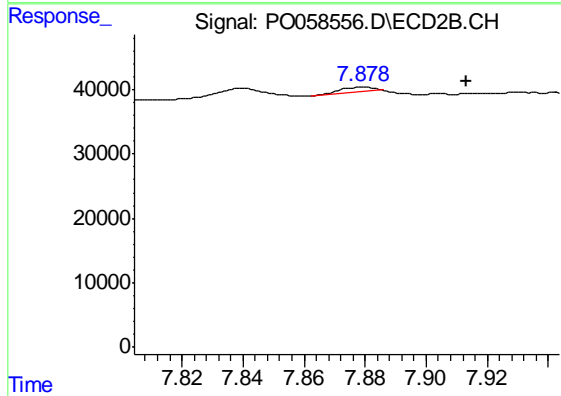
#41 AR-1268-1

R.T.: 7.299 min  
 Delta R.T.: -0.057 min  
 Response: 34322  
 Conc: 4.21 ng/ml



#44 AR-1268-4

R.T.: 0.000 min  
 Exp R.T. : 9.014 min  
 Response: 0  
 Conc: N.D.



#44 AR-1268-4

R.T.: 7.879 min  
 Delta R.T.: -0.034 min  
 Response: 6613  
 Conc: 2.85 ng/ml