

Data Path : Z:\pestpcbsrv\HPCHEM1\ECD_O\Data\PO081318\
 Data File : PO047985.D
 Signal(s) : Signal #1: ECD1A.CH Signal #2: ECD2B.CH
 Acq On : 13 Aug 2018 7:40
 Operator : SM/SJ
 Sample : I.BLK
 Misc :
 ALS Vial : 2 Sample Multiplier: 1

Instrument :
 ECD_O
 ClientSampleId :
 I.BLK

Integration File signal 1: autoint1.e
 Integration File signal 2: autoint2.e
 Quant Time: Aug 13 08:04:20 2018
 Quant Method : Z:\pestpcbsrv\HPCHEM1\ECD_O\methods\PO072718.M
 Quant Title : GC EXTRACTABLES
 QLast Update : Fri Jul 27 02:33:29 2018
 Response via : Initial Calibration
 Integrator: ChemStation 6890 Scale Mode: Small noise peaks clipped

Volume Inj. : 2 µl
 Signal #1 Phase : ZB-MR1 Signal #2 Phase: ZB-MR2
 Signal #1 Info : 30Mx0.32mmx 0.50µ Signal #2 Info : 30M x 0.32mm x 0.25µm

Compound	RT#1	RT#2	Resp#1	Resp#2	ng/ml	ng/ml

System Monitoring Compounds						
1) SA Tetrachlo...	4.394	3.636	5061865	5587540	25.071	22.740
2) SA Decachlor...	10.083	8.619	3456188	2236040	21.191	14.225 #
Target Compounds						
3) L1 AR-1016-1	5.308	0.000	13556	0	2.838	N.D. #
4) L1 AR-1016-2	5.654	4.946	26187	73738	4.448	14.044 #
5) L1 AR-1016-3	5.743	4.946	13363	73738	2.694	16.794 #
6) L1 AR-1016-4	6.033	4.946	28331	73738	6.091	14.220 #
7) L1 AR-1016-5	6.187	0.000	5364	0	1.029	N.D. #
8) L2 AR-1221-1	4.674	0.000	3852	0	1.742	N.D. #
9) L2 AR-1221-2	4.698	3.936	81869	87731	50.067	48.362
10) L2 AR-1221-3	4.785	3.999	29901	28522	5.792	4.934
11) L3 AR-1232-1	5.118	4.312	47433	29473	22.056	12.533 #
12) L3 AR-1232-2	5.579	4.724	24175	106319	8.216	34.791 #
13) L3 AR-1232-3	5.579	4.724	24175	106319	5.627	23.024 #
14) L3 AR-1232-4	5.654	4.835	26187	14504	9.461	4.692 #
15) L3 AR-1232-5	5.743	4.946	13363	73738	5.984	41.201 #
16) L4 AR-1242-1	5.579	4.724	24175	106319	3.289	13.276 #
17) L4 AR-1242-2	5.654	4.946	26187	73738	5.658	17.899 #
18) L4 AR-1242-3	5.743	4.946	13363	73738	3.478	17.583 #
19) L4 AR-1242-4	6.033	0.000	28331	0	7.370	N.D. #
20) L4 AR-1242-5	6.187	5.362	5364	65334	1.253	16.875 #
21) L5 AR-1248-1	6.033	0.000	28331	0	4.531	N.D. #
22) L5 AR-1248-2	6.187	5.362	5364	65334	0.985	12.212 #
23) L5 AR-1248-3	6.472	5.523	16435	86314	2.335	8.674 #
24) L5 AR-1248-4	6.472	5.620	16435	39777	2.448	5.676 #
25) L5 AR-1248-5	6.624	6.079	22517	77404	3.181	16.242 #
26) L6 AR-1254-1	6.624	5.523	22517	86314	1.841	7.015 #
27) L6 AR-1254-2	6.907	5.658	4960	34072	0.665	3.273 #
28) L6 AR-1254-3	7.005	6.079	650855	77404	49.907	4.460 #
29) L6 AR-1254-4	7.278	6.317	26164	24610	2.684	2.271
30) L6 AR-1254-5	7.541	0.000	33298	0	4.507	N.D. #
31) L7 AR-1260-1	7.155	6.191	40908	119683	4.363	10.831 #
32) L7 AR-1260-2	7.412	6.369	62697	841745	5.622	62.779 #
33) L7 AR-1260-3	7.696	6.739	74491	58623	5.790	4.032 #
34) L7 AR-1260-4	8.311	7.241	125970	158536	7.082	7.205
35) L7 AR-1260-5	8.635	7.587	281139	87435	24.619	5.605 #
36) L8 AR-1262-1	7.155	6.369	40908	841745	4.938	74.241 #
37) L8 AR-1262-2	7.412	6.529	62697	105825	6.469	9.378 #
38) L8 AR-1262-3	7.770	6.739	54465	58623	4.438	3.884

Data Path : Z:\pestpcbsrv\HPCHEM1\ECD_O\Data\PO081318\
 Data File : PO047985.D
 Signal(s) : Signal #1: ECD1A.CH Signal #2: ECD2B.CH
 Acq On : 13 Aug 2018 7:40
 Operator : SM/SJ
 Sample : I.BLK
 Misc :
 ALS Vial : 2 Sample Multiplier: 1

Instrument :
 ECD_O
 ClientSampleId :
 I.BLK

Integration File signal 1: autoint1.e
 Integration File signal 2: autoint2.e
 Quant Time: Aug 13 08:04:20 2018
 Quant Method : Z:\pestpcbsrv\HPCHEM1\ECD_O\methods\PO072718.M
 Quant Title : GC EXTRACTABLES
 QLast Update : Fri Jul 27 02:33:29 2018
 Response via : Initial Calibration
 Integrator: ChemStation 6890 Scale Mode: Small noise peaks clipped

Volume Inj. : 2 µl
 Signal #1 Phase : ZB-MR1 Signal #2 Phase: ZB-MR2
 Signal #1 Info : 30Mx0.32mmx 0.50µ Signal #2 Info : 30M x 0.32mm x 0.25µm

	Compound	RT#1	RT#2	Resp#1	Resp#2	ng/ml	ng/ml
39)	L8 AR-1262-4	7.997	7.038	42976	25543	3.650	1.940 #
40)	L8 AR-1262-5	8.311	7.241	125970	158536	5.863	6.138
41)	L9 AR-1268-1	8.635	7.524	281139	12945	12.113	0.498 #
42)	L9 AR-1268-2	8.734	7.587	56301	87435	2.628	3.510 #
43)	L9 AR-1268-3	8.922	7.798	197083	19991	10.917	1.013 #
44)	L9 AR-1268-4	9.346	8.082	151946	56882	19.055	6.781 #
45)	L9 AR-1268-5	9.753	8.369	151057	10073	2.772	0.184 #

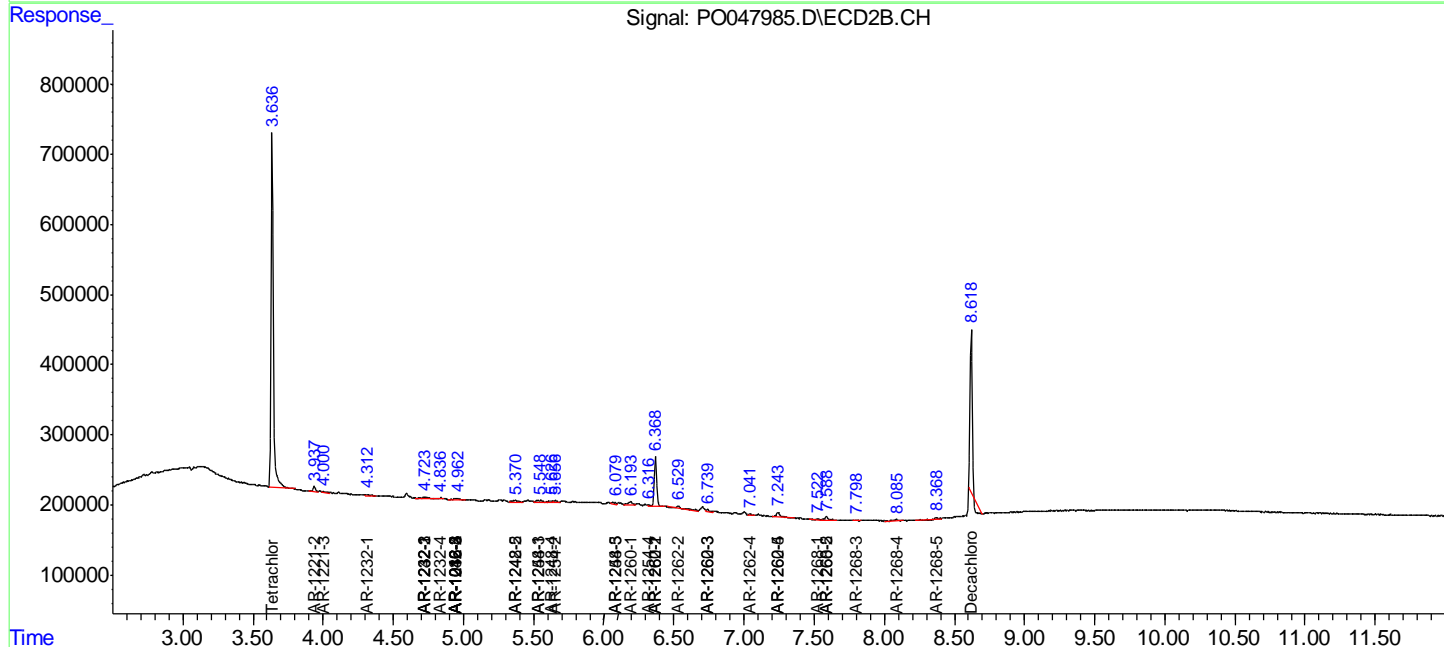
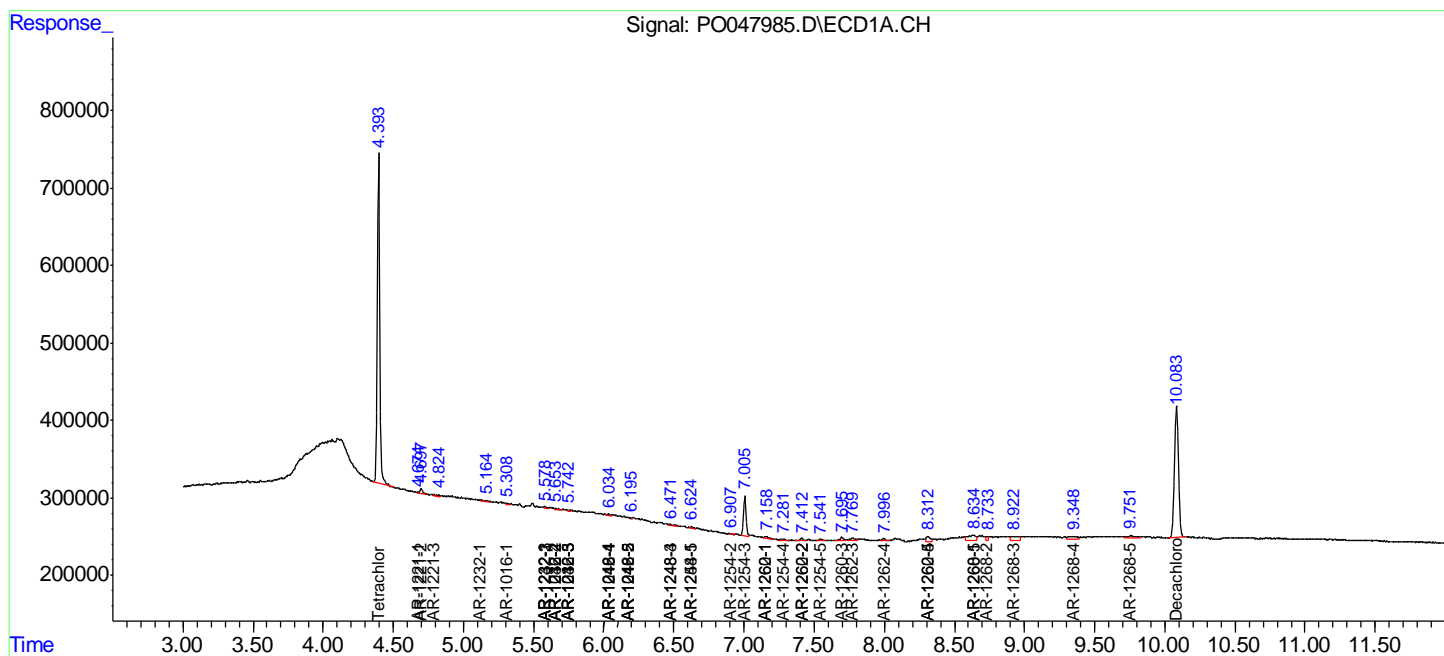
(f)=RT Delta > 1/2 Window (#)=Amounts differ by > 25% (m)=manual int.

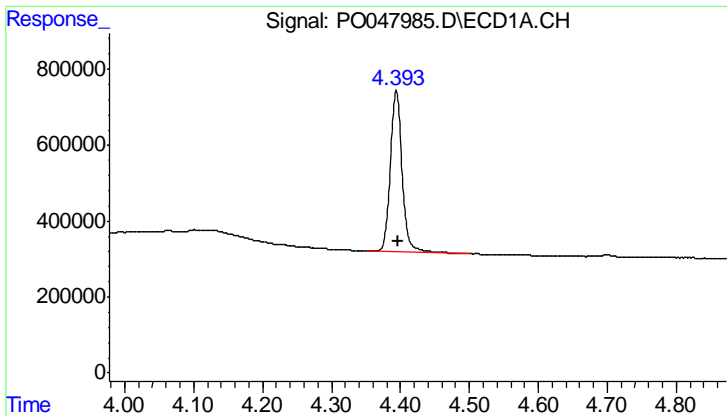
Data Path : Z:\pestpcbsrv\HPCHEM1\ECD_O\Data\PO081318\
 Data File : PO047985.D
 Signal(s) : Signal #1: ECD1A.CH Signal #2: ECD2B.CH
 Acq On : 13 Aug 2018 7:40
 Operator : SM/SJ
 Sample : I.BLK
 Misc :
 ALS Vial : 2 Sample Multiplier: 1

Instrument :
 ECD_O
 ClientSampled :
 I.BLK

Integration File signal 1: autoint1.e
 Integration File signal 2: autoint2.e
 Quant Time: Aug 13 08:04:20 2018
 Quant Method : Z:\pestpcbsrv\HPCHEM1\ECD_O\methods\PO072718.M
 Quant Title : GC EXTRACTABLES
 QLast Update : Fri Jul 27 02:33:29 2018
 Response via : Initial Calibration
 Integrator: ChemStation 6890 Scale Mode: Small noise peaks clipped

Volume Inj. : 2 µl
 Signal #1 Phase : ZB-MR1 Signal #2 Phase: ZB-MR2
 Signal #1 Info : 30Mx0.32mmx 0.50µ Signal #2 Info : 30M x 0.32mm x 0.25µm

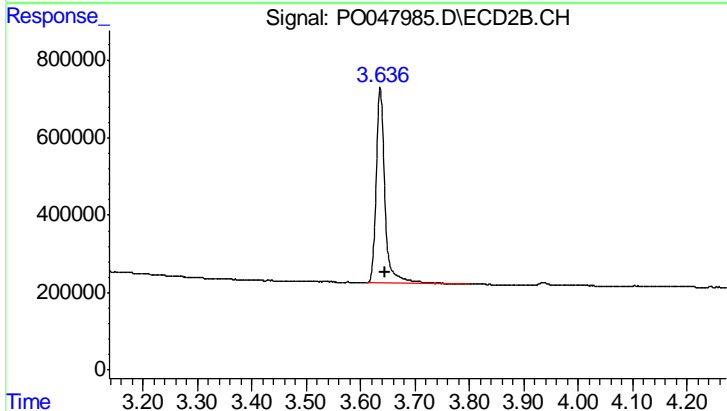




#1 Tetrachloro-m-xylene

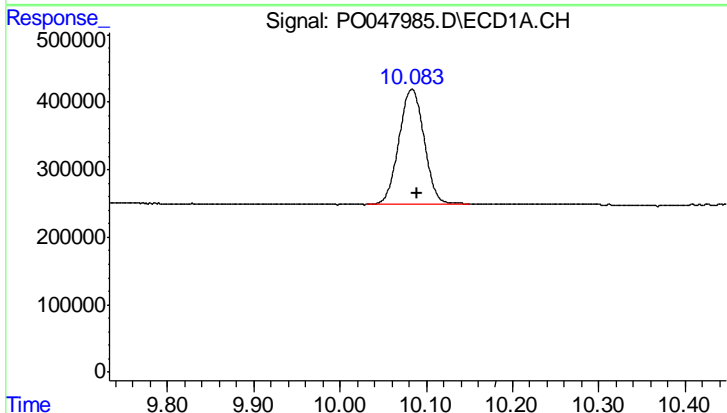
R.T.: 4.394 min
 Delta R.T.: -0.003 min
 Response: 5061865
 Conc: 25.07 ng/ml

Instrument :
 ECD_O
 ClientSampled :
 I.BLK



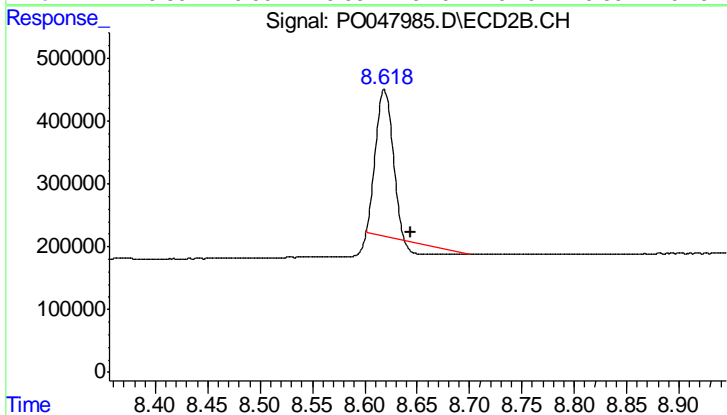
#1 Tetrachloro-m-xylene

R.T.: 3.636 min
 Delta R.T.: -0.009 min
 Response: 5587540
 Conc: 22.74 ng/ml



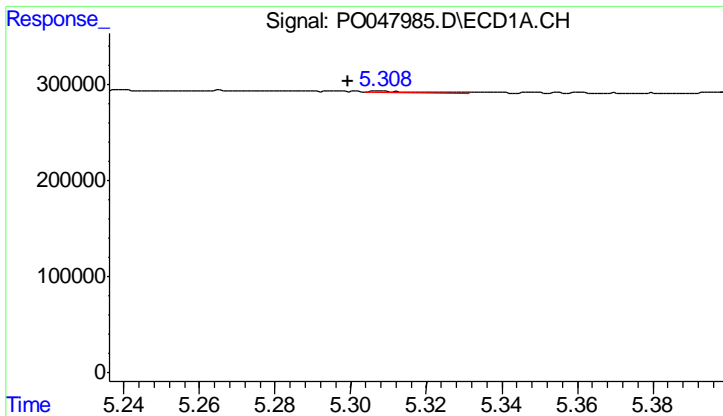
#2 Decachlorobiphenyl

R.T.: 10.083 min
 Delta R.T.: -0.007 min
 Response: 3456188
 Conc: 21.19 ng/ml



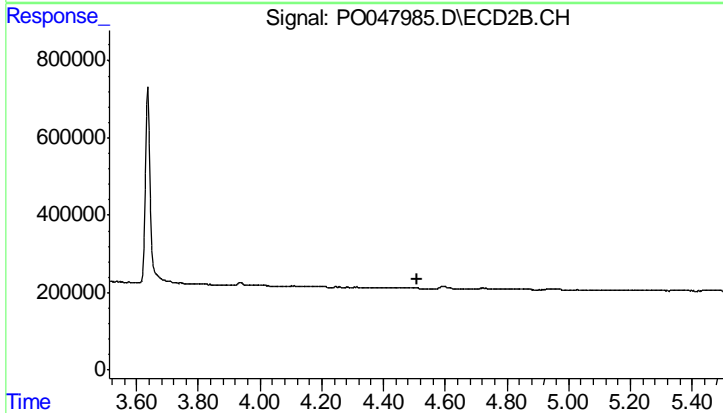
#2 Decachlorobiphenyl

R.T.: 8.619 min
 Delta R.T.: -0.026 min
 Response: 2236040
 Conc: 14.22 ng/ml

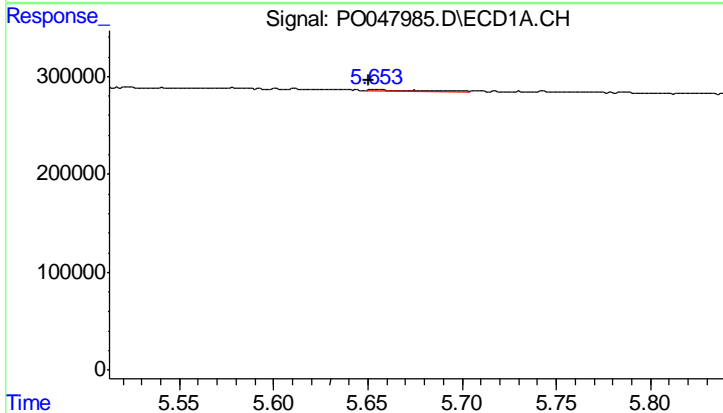


#3 AR-1016-1
 R.T.: 5.308 min
 Delta R.T.: 0.009 min
 Response: 13556
 Conc: 2.84 ng/ml

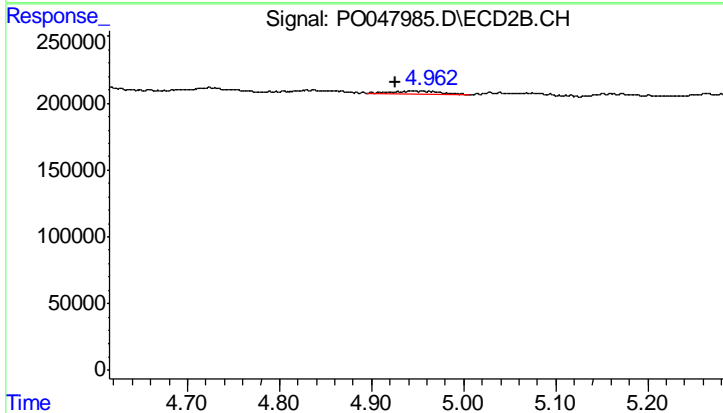
Instrument :
 ECD_O
 ClientSampled :
 I.BLK



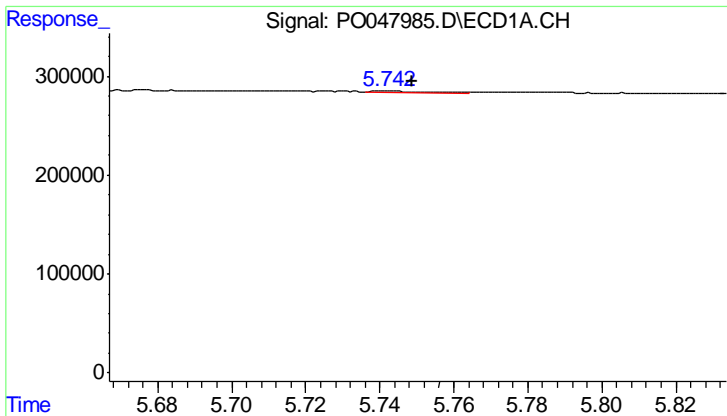
#3 AR-1016-1
 R.T.: 0.000 min
 Exp R.T.: 4.511 min
 Response: 0
 Conc: N.D.



#4 AR-1016-2
 R.T.: 5.654 min
 Delta R.T.: 0.003 min
 Response: 26187
 Conc: 4.45 ng/ml



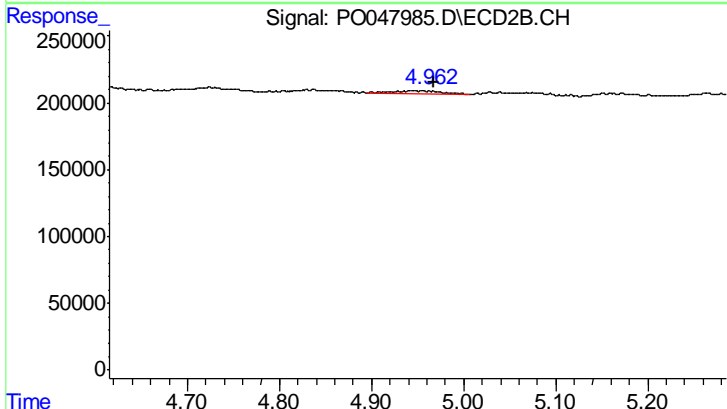
#4 AR-1016-2
 R.T.: 4.946 min
 Delta R.T.: 0.020 min
 Response: 73738
 Conc: 14.04 ng/ml



#5 AR-1016-3

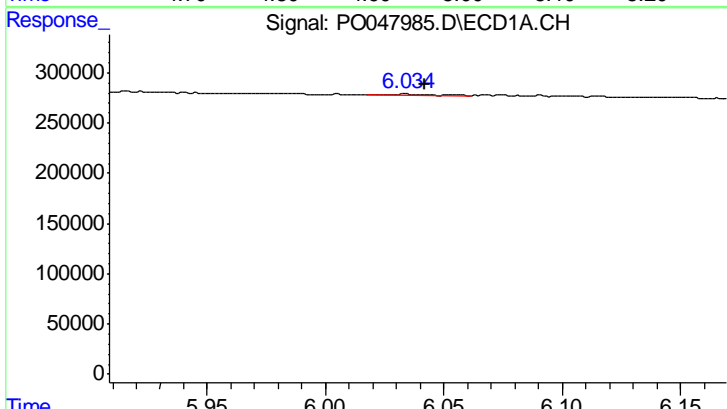
R.T.: 5.743 min
 Delta R.T.: -0.006 min
 Response: 13363
 Conc: 2.69 ng/ml

Instrument :
 ECD_O
 ClientSampleId :
 I.BLK



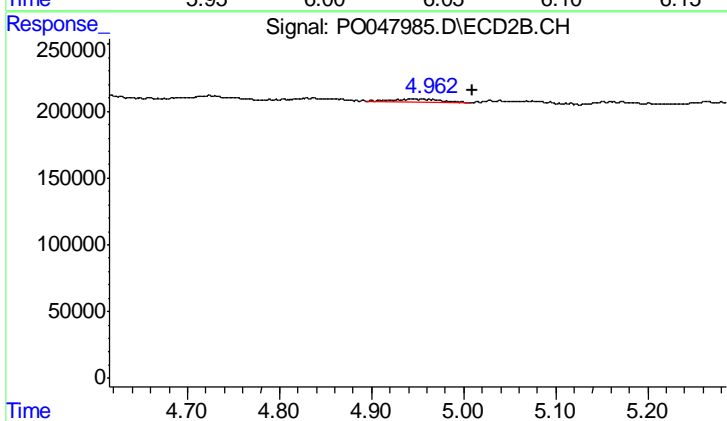
#5 AR-1016-3

R.T.: 4.946 min
 Delta R.T.: -0.021 min
 Response: 73738
 Conc: 16.79 ng/ml



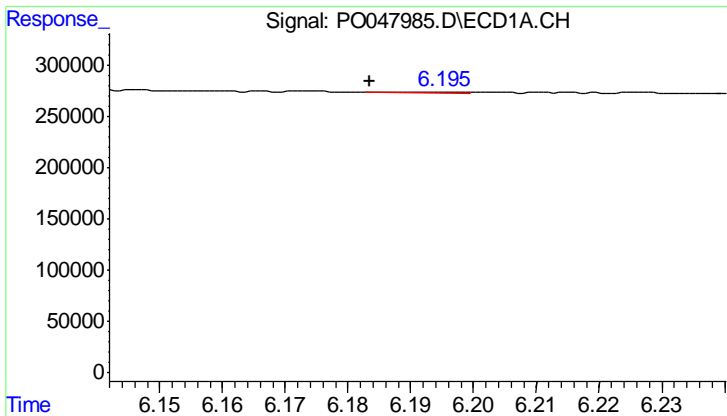
#6 AR-1016-4

R.T.: 6.033 min
 Delta R.T.: -0.009 min
 Response: 28331
 Conc: 6.09 ng/ml



#6 AR-1016-4

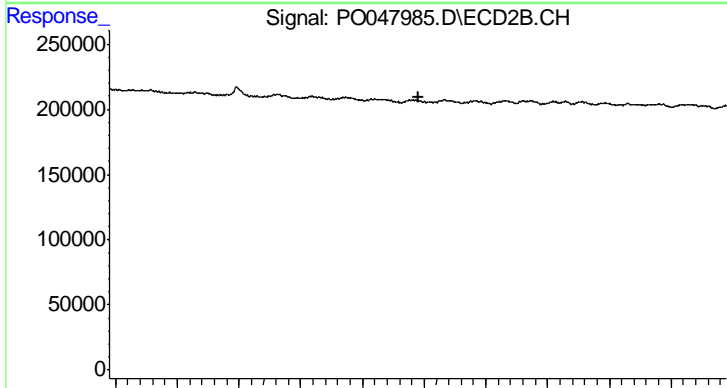
R.T.: 4.946 min
 Delta R.T.: -0.063 min
 Response: 73738
 Conc: 14.22 ng/ml



#7 AR-1016-5

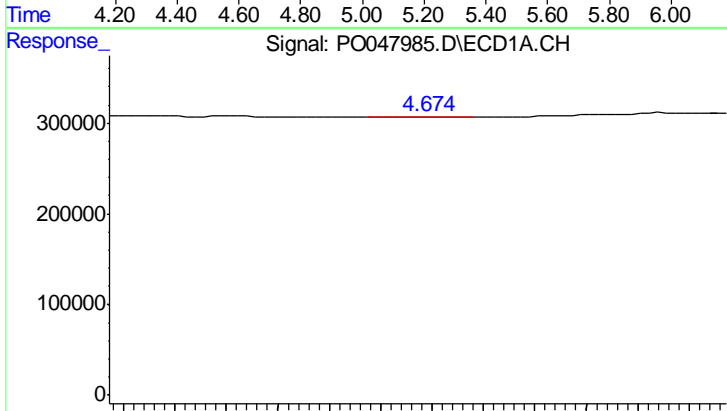
R.T.: 6.187 min
 Delta R.T.: 0.003 min
 Response: 5364
 Conc: 1.03 ng/ml

Instrument :
 ECD_O
 ClientSampled :
 I.BLK



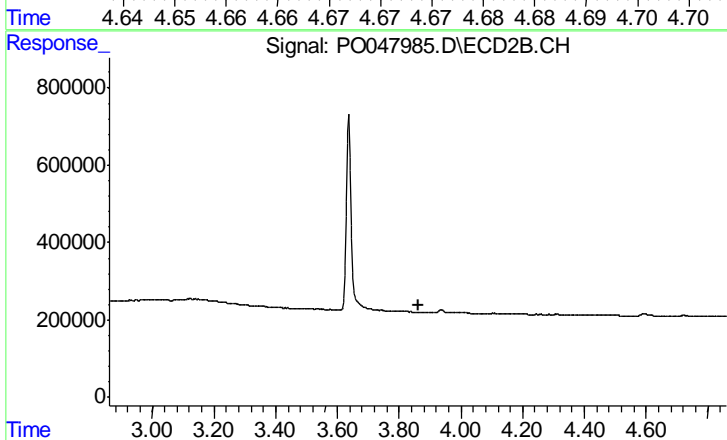
#7 AR-1016-5

R.T.: 0.000 min
 Exp R.T. : 5.180 min
 Response: 0
 Conc: N.D.



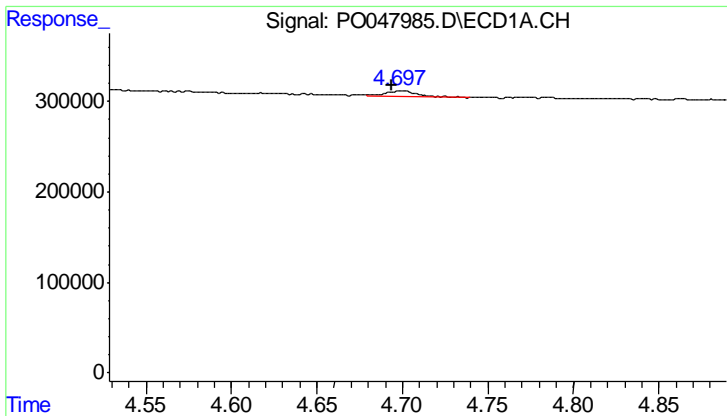
#8 AR-1221-1

R.T.: 4.674 min
 Delta R.T.: 0.066 min
 Response: 3852
 Conc: 1.74 ng/ml



#8 AR-1221-1

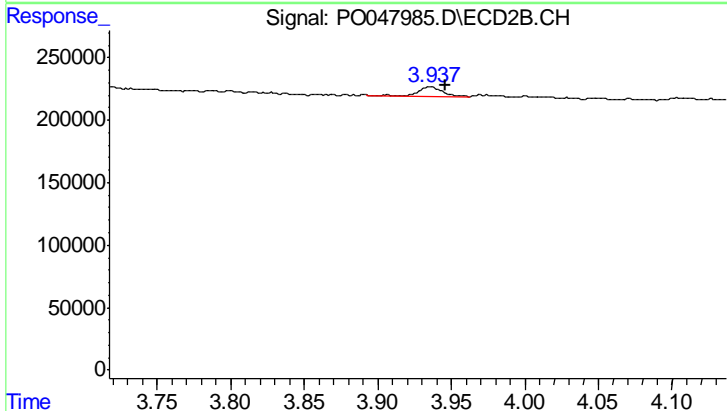
R.T.: 0.000 min
 Exp R.T. : 3.861 min
 Response: 0
 Conc: N.D.



#9 AR-1221-2

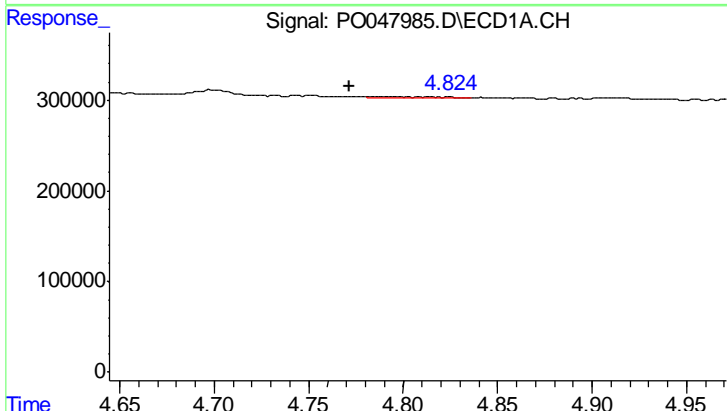
R.T.: 4.698 min
 Delta R.T.: 0.004 min
 Response: 81869
 Conc: 50.07 ng/ml

Instrument :
 ECD_O
 ClientSampleId :
 I.BLK



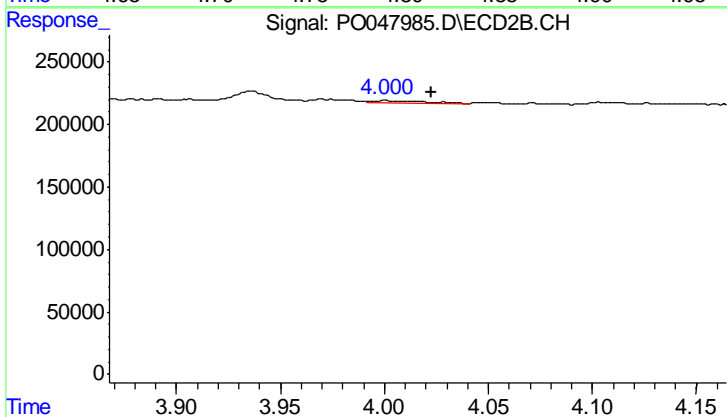
#9 AR-1221-2

R.T.: 3.936 min
 Delta R.T.: -0.010 min
 Response: 87731
 Conc: 48.36 ng/ml



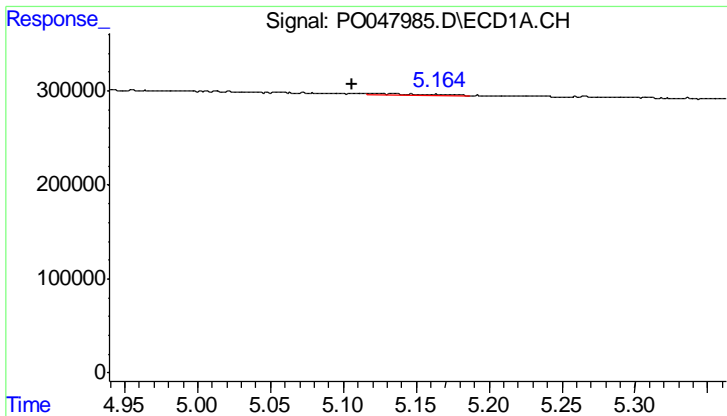
#10 AR-1221-3

R.T.: 4.785 min
 Delta R.T.: 0.013 min
 Response: 29901
 Conc: 5.79 ng/ml



#10 AR-1221-3

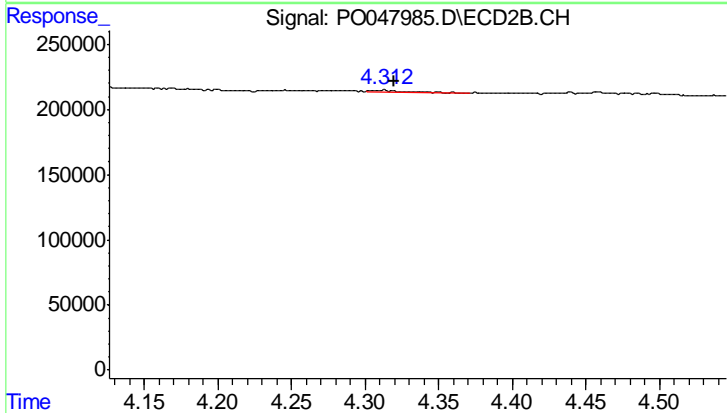
R.T.: 3.999 min
 Delta R.T.: -0.023 min
 Response: 28522
 Conc: 4.93 ng/ml



#11 AR-1232-1

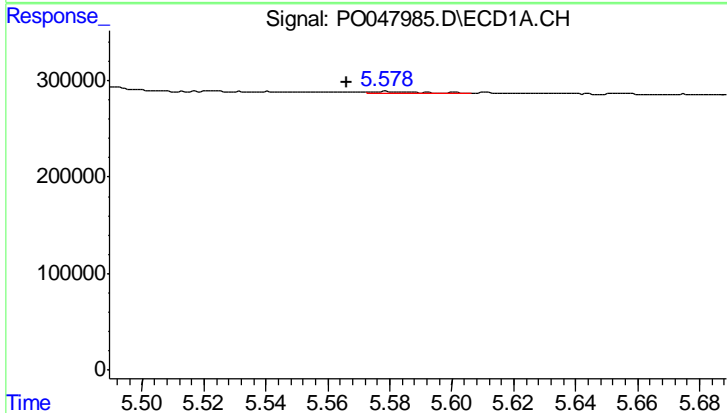
R.T.: 5.118 min
 Delta R.T.: 0.013 min
 Response: 47433
 Conc: 22.06 ng/ml

Instrument :
 ECD_O
 ClientSampleId :
 I.BLK



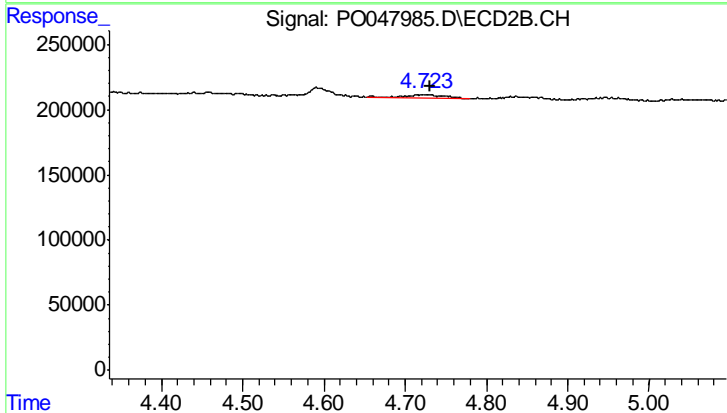
#11 AR-1232-1

R.T.: 4.312 min
 Delta R.T.: -0.008 min
 Response: 29473
 Conc: 12.53 ng/ml



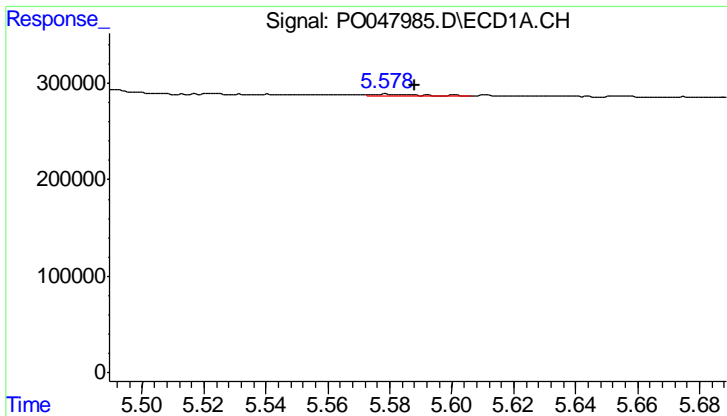
#12 AR-1232-2

R.T.: 5.579 min
 Delta R.T.: 0.013 min
 Response: 24175
 Conc: 8.22 ng/ml



#12 AR-1232-2

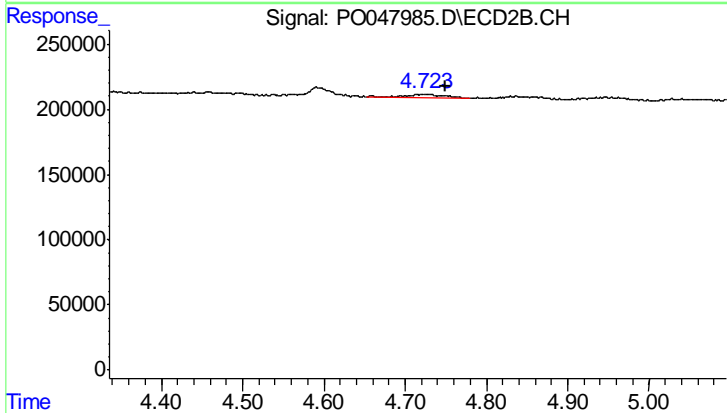
R.T.: 4.724 min
 Delta R.T.: -0.006 min
 Response: 106319
 Conc: 34.79 ng/ml



#13 AR-1232-3

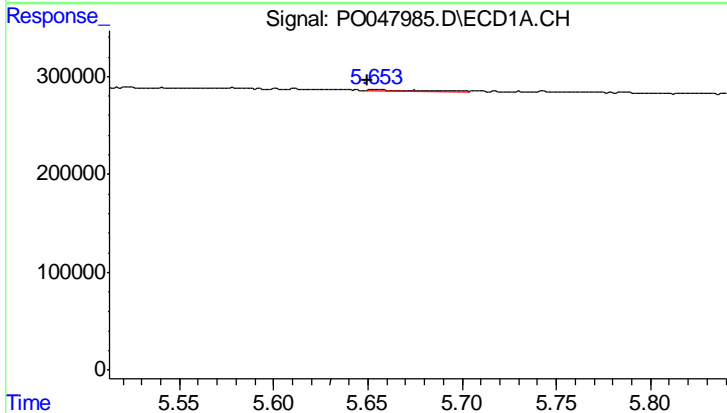
R.T.: 5.579 min
 Delta R.T.: -0.009 min
 Response: 24175
 Conc: 5.63 ng/ml

Instrument :
 ECD_O
 ClientSampled :
 I.BLK



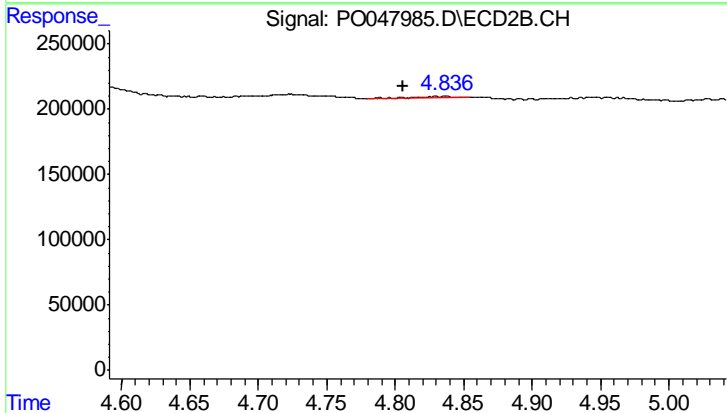
#13 AR-1232-3

R.T.: 4.724 min
 Delta R.T.: -0.025 min
 Response: 106319
 Conc: 23.02 ng/ml



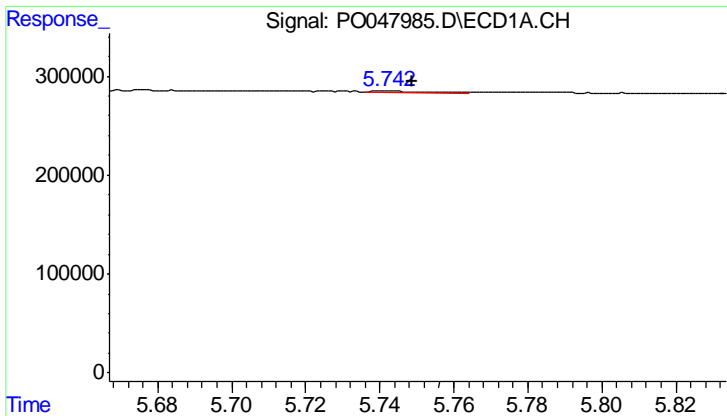
#14 AR-1232-4

R.T.: 5.654 min
 Delta R.T.: 0.004 min
 Response: 26187
 Conc: 9.46 ng/ml



#14 AR-1232-4

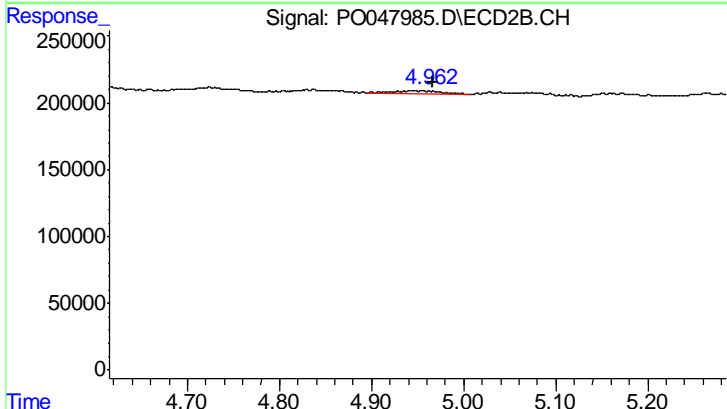
R.T.: 4.835 min
 Delta R.T.: 0.030 min
 Response: 14504
 Conc: 4.69 ng/ml



#15 AR-1232-5

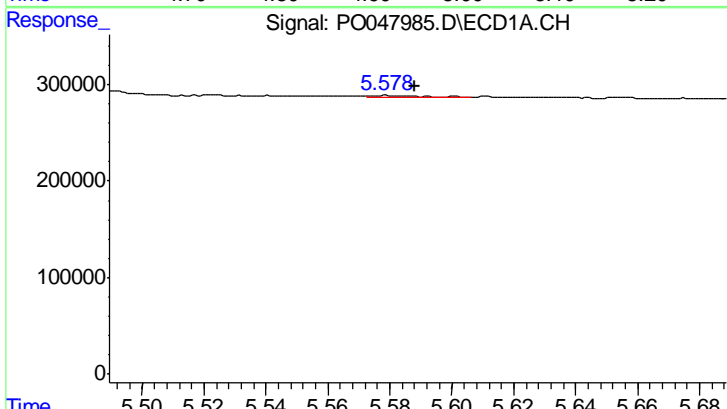
R.T.: 5.743 min
 Delta R.T.: -0.006 min
 Response: 13363
 Conc: 5.98 ng/ml

Instrument :
 ECD_O
 ClientSampleId :
 I.BLK



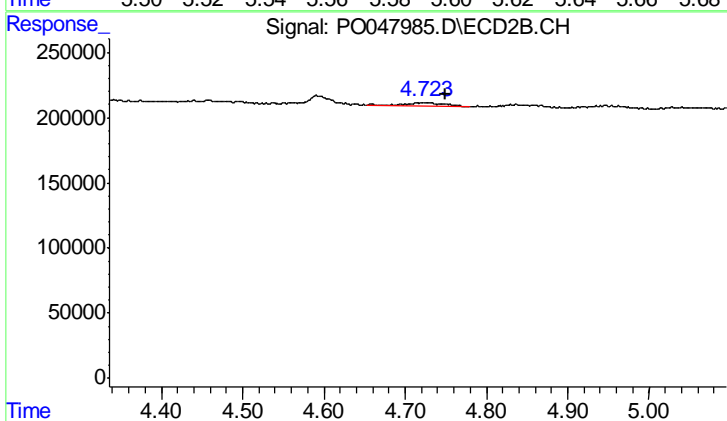
#15 AR-1232-5

R.T.: 4.946 min
 Delta R.T.: -0.020 min
 Response: 73738
 Conc: 41.20 ng/ml



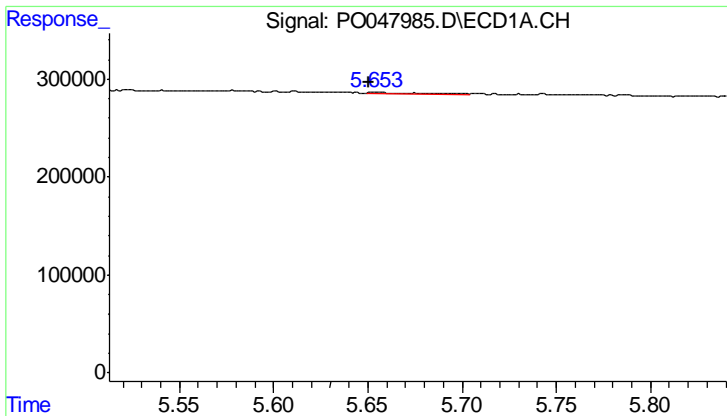
#16 AR-1242-1

R.T.: 5.579 min
 Delta R.T.: -0.009 min
 Response: 24175
 Conc: 3.29 ng/ml



#16 AR-1242-1

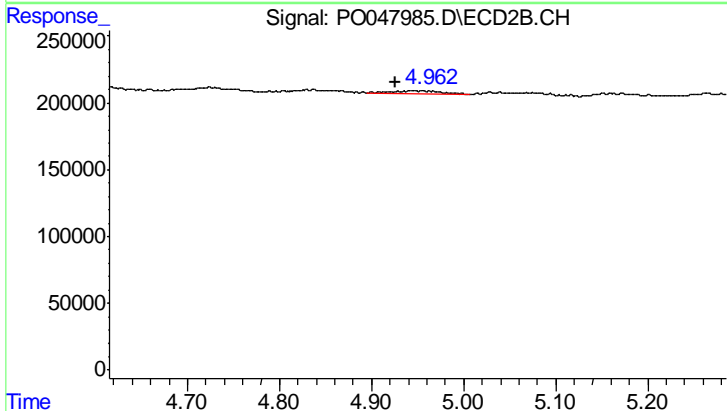
R.T.: 4.724 min
 Delta R.T.: -0.025 min
 Response: 106319
 Conc: 13.28 ng/ml



#17 AR-1242-2

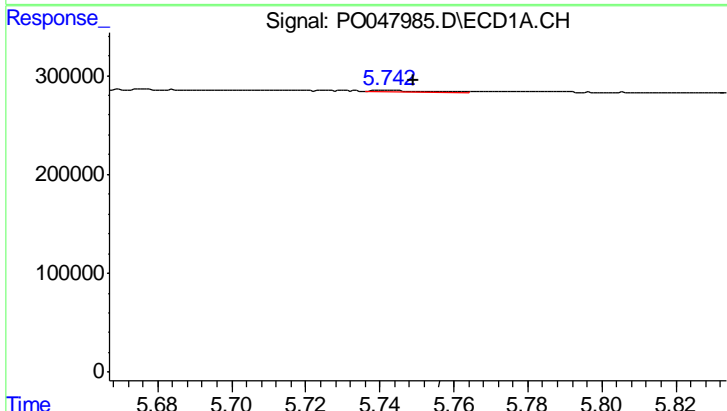
R.T.: 5.654 min
 Delta R.T.: 0.003 min
 Response: 26187
 Conc: 5.66 ng/ml

Instrument :
 ECD_O
 ClientSampled :
 I.BLK



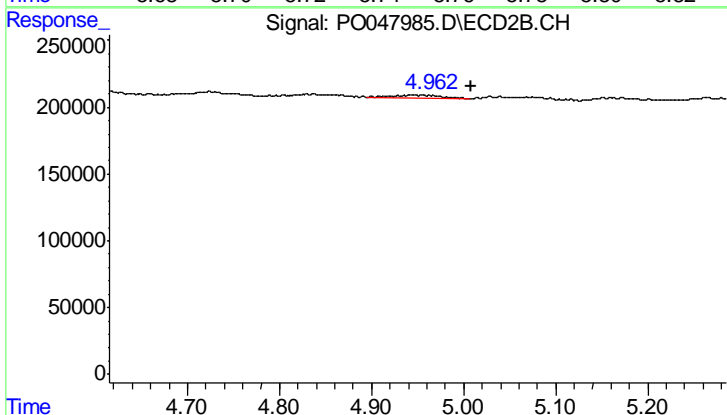
#17 AR-1242-2

R.T.: 4.946 min
 Delta R.T.: 0.020 min
 Response: 73738
 Conc: 17.90 ng/ml



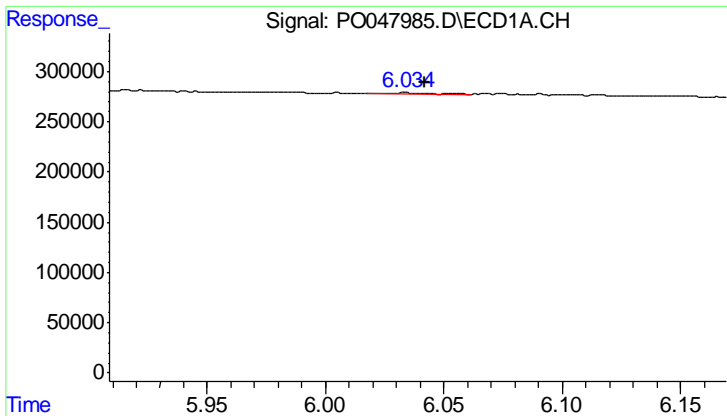
#18 AR-1242-3

R.T.: 5.743 min
 Delta R.T.: -0.006 min
 Response: 13363
 Conc: 3.48 ng/ml



#18 AR-1242-3

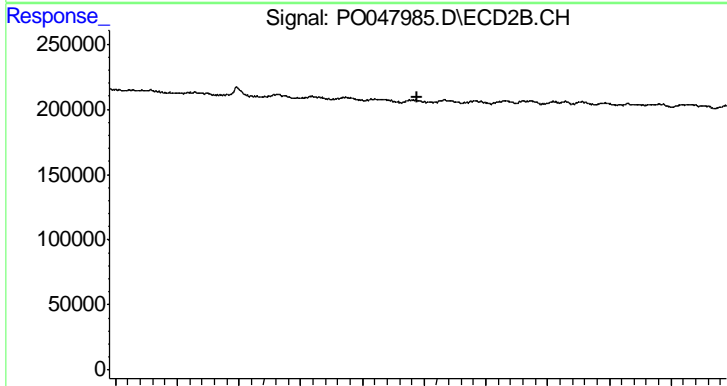
R.T.: 4.946 min
 Delta R.T.: -0.062 min
 Response: 73738
 Conc: 17.58 ng/ml



#19 AR-1242-4

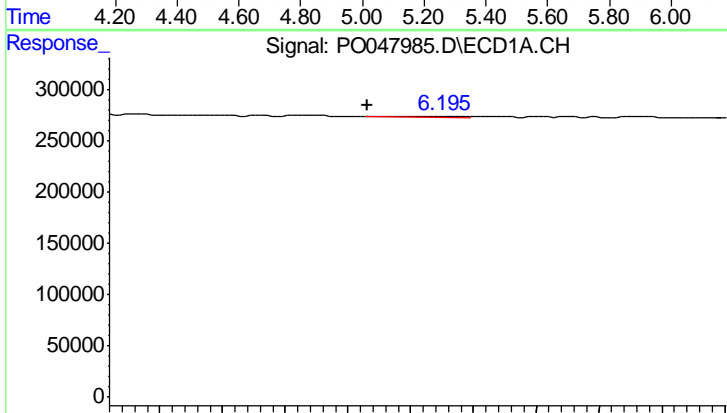
R.T.: 6.033 min
 Delta R.T.: -0.009 min
 Response: 28331
 Conc: 7.37 ng/ml

Instrument :
 ECD_O
 ClientSampled :
 I.BLK



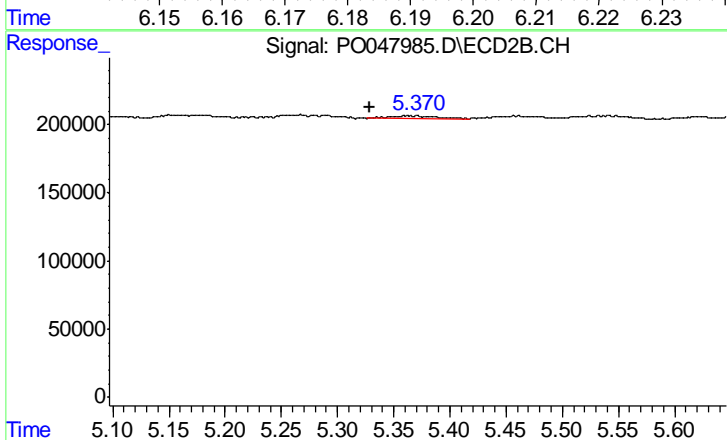
#19 AR-1242-4

R.T.: 0.000 min
 Exp R.T.: 5.180 min
 Response: 0
 Conc: N.D.



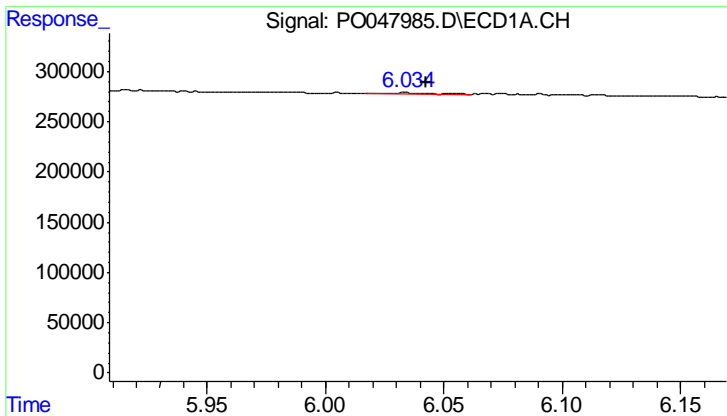
#20 AR-1242-5

R.T.: 6.187 min
 Delta R.T.: 0.004 min
 Response: 5364
 Conc: 1.25 ng/ml



#20 AR-1242-5

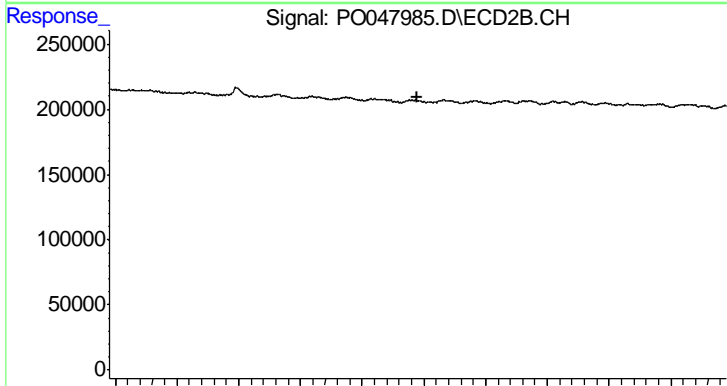
R.T.: 5.362 min
 Delta R.T.: 0.033 min
 Response: 65334
 Conc: 16.87 ng/ml



#21 AR-1248-1

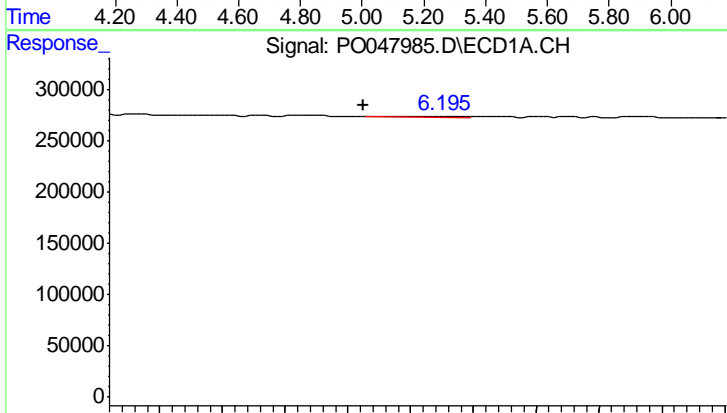
R.T.: 6.033 min
 Delta R.T.: -0.009 min
 Response: 28331
 Conc: 4.53 ng/ml

Instrument :
 ECD_O
 ClientSampled :
 I.BLK



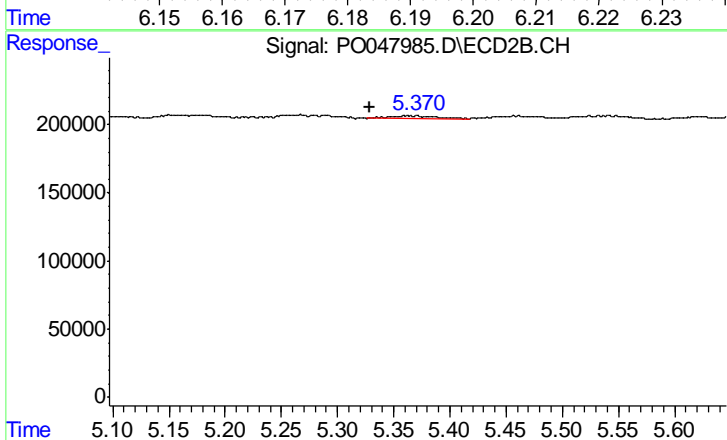
#21 AR-1248-1

R.T.: 0.000 min
 Exp R.T.: 5.180 min
 Response: 0
 Conc: N.D.



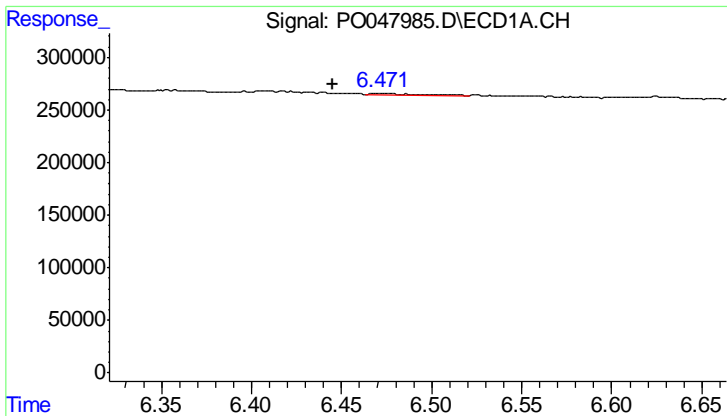
#22 AR-1248-2

R.T.: 6.187 min
 Delta R.T.: 0.004 min
 Response: 5364
 Conc: 0.98 ng/ml



#22 AR-1248-2

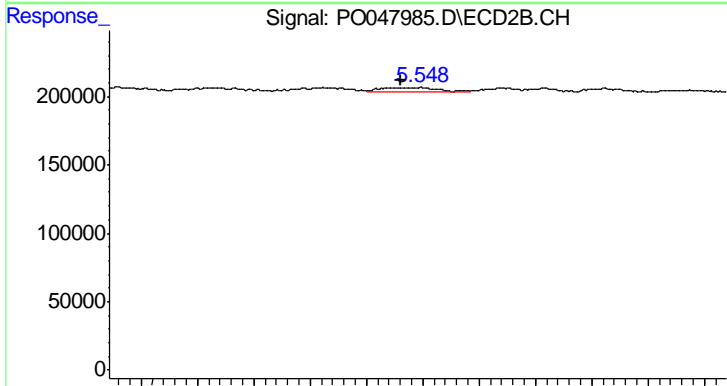
R.T.: 5.362 min
 Delta R.T.: 0.034 min
 Response: 65334
 Conc: 12.21 ng/ml



#23 AR-1248-3

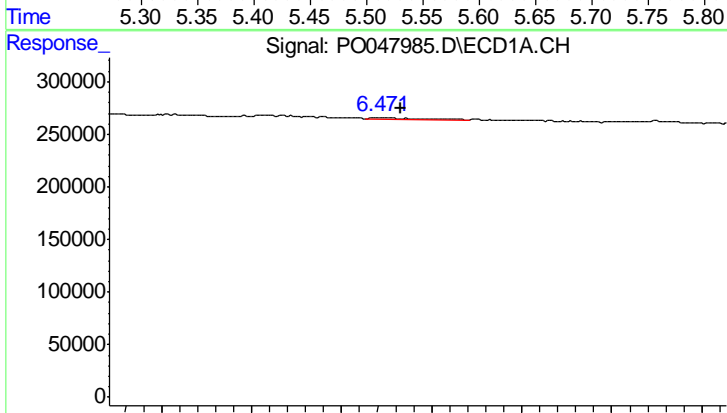
R.T.: 6.472 min
 Delta R.T.: 0.027 min
 Response: 16435
 Conc: 2.34 ng/ml

Instrument :
 ECD_O
 ClientSampled :
 I.BLK



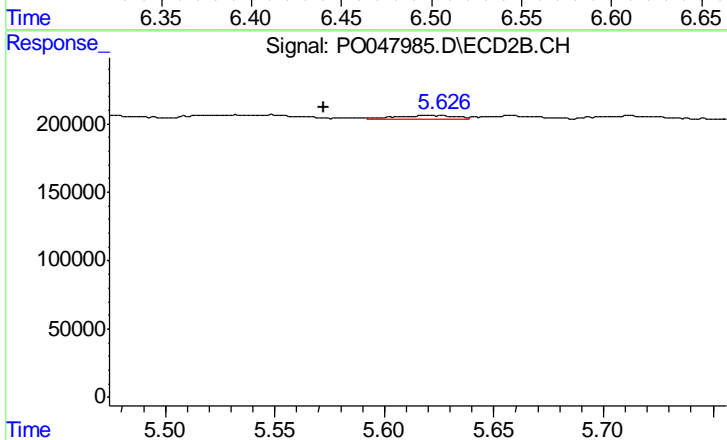
#23 AR-1248-3

R.T.: 5.523 min
 Delta R.T.: -0.008 min
 Response: 86314
 Conc: 8.67 ng/ml



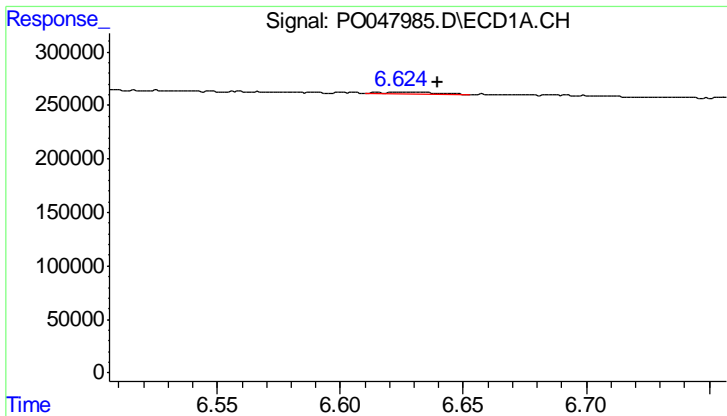
#24 AR-1248-4

R.T.: 6.472 min
 Delta R.T.: -0.011 min
 Response: 16435
 Conc: 2.45 ng/ml



#24 AR-1248-4

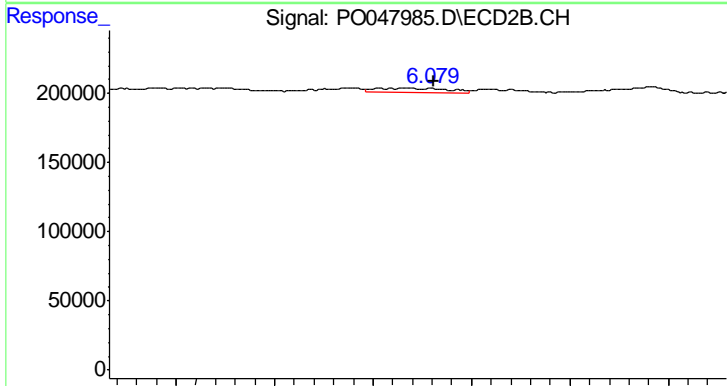
R.T.: 5.620 min
 Delta R.T.: 0.048 min
 Response: 39777
 Conc: 5.68 ng/ml



#25 AR-1248-5

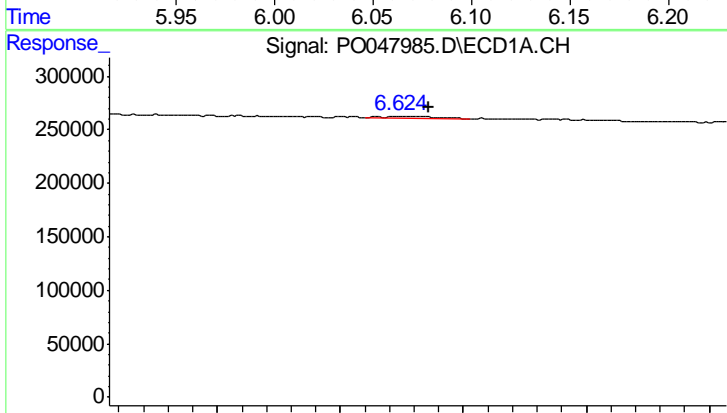
R.T.: 6.624 min
 Delta R.T.: -0.016 min
 Response: 22517
 Conc: 3.18 ng/ml

Instrument :
 ECD_O
 ClientSampled :
 I.BLK



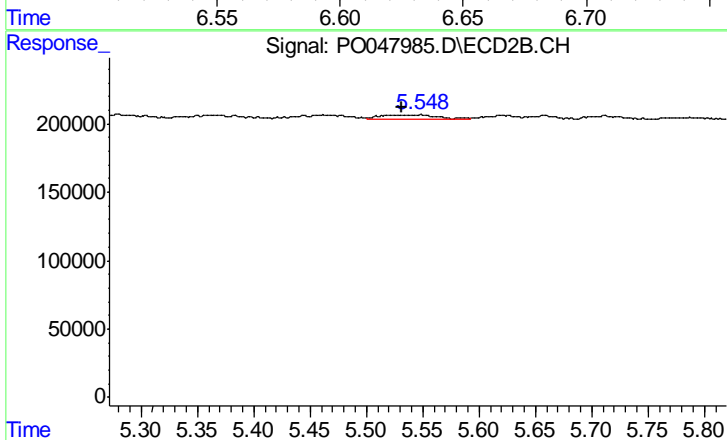
#25 AR-1248-5

R.T.: 6.079 min
 Delta R.T.: -0.002 min
 Response: 77404
 Conc: 16.24 ng/ml



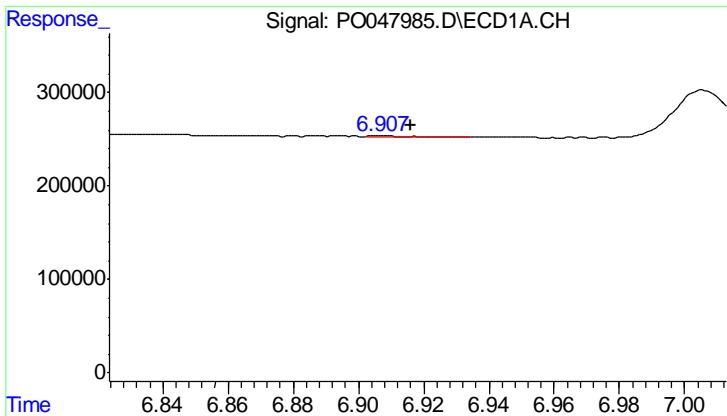
#26 AR-1254-1

R.T.: 6.624 min
 Delta R.T.: -0.012 min
 Response: 22517
 Conc: 1.84 ng/ml



#26 AR-1254-1

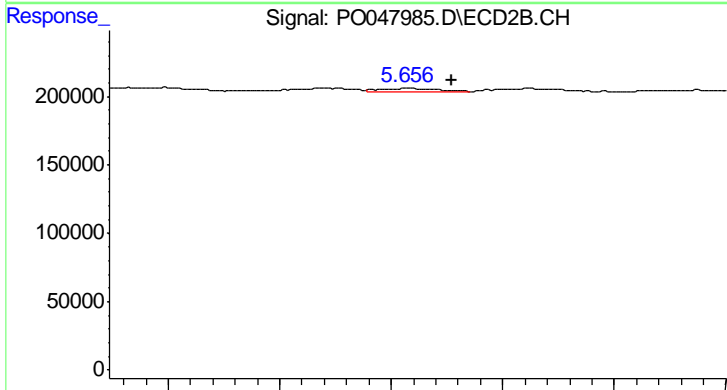
R.T.: 5.523 min
 Delta R.T.: -0.009 min
 Response: 86314
 Conc: 7.01 ng/ml



#27 AR-1254-2

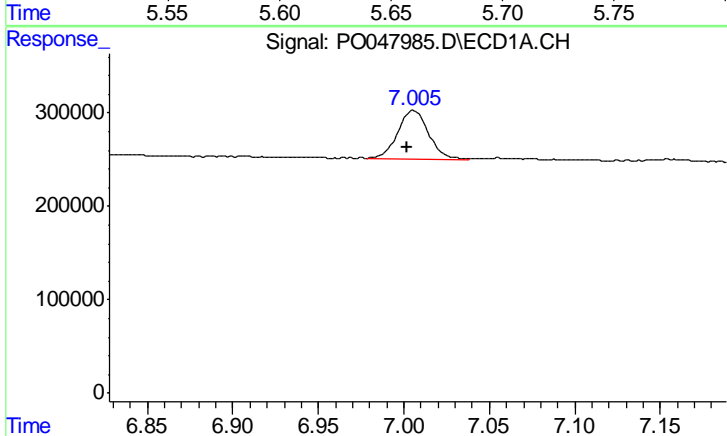
R.T.: 6.907 min
 Delta R.T.: -0.009 min
 Response: 4960
 Conc: 0.67 ng/ml

Instrument :
 ECD_O
 ClientSampled :
 I.BLK



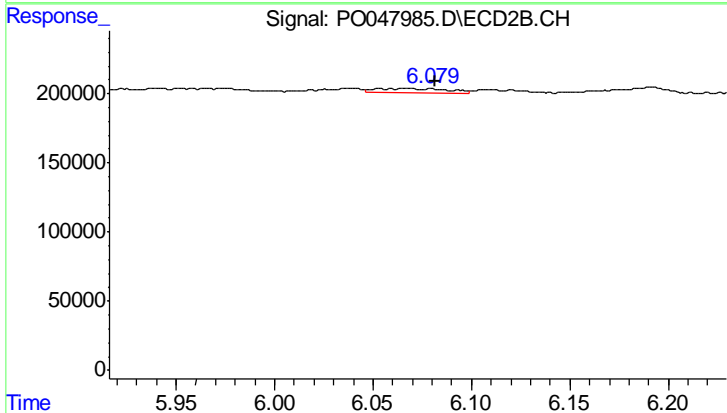
#27 AR-1254-2

R.T.: 5.658 min
 Delta R.T.: -0.019 min
 Response: 34072
 Conc: 3.27 ng/ml



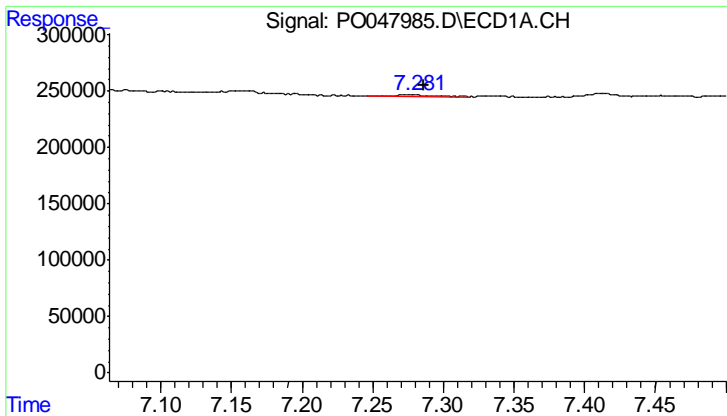
#28 AR-1254-3

R.T.: 7.005 min
 Delta R.T.: 0.003 min
 Response: 650855
 Conc: 49.91 ng/ml



#28 AR-1254-3

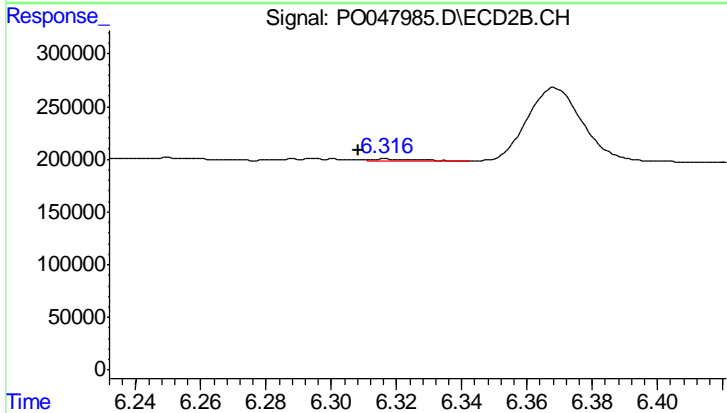
R.T.: 6.079 min
 Delta R.T.: -0.003 min
 Response: 77404
 Conc: 4.46 ng/ml



#29 AR-1254-4

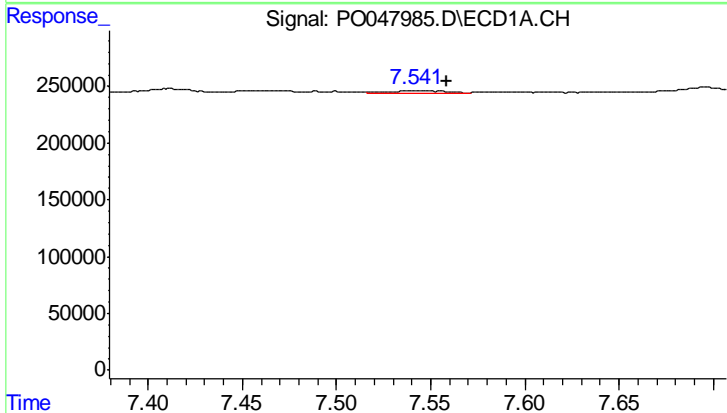
R.T.: 7.278 min
 Delta R.T.: -0.009 min
 Response: 26164
 Conc: 2.68 ng/ml

Instrument :
 ECD_O
 ClientSampleId :
 I.BLK



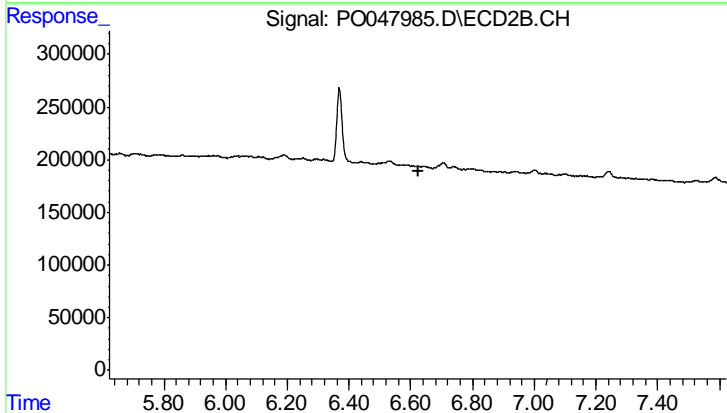
#29 AR-1254-4

R.T.: 6.317 min
 Delta R.T.: 0.009 min
 Response: 24610
 Conc: 2.27 ng/ml



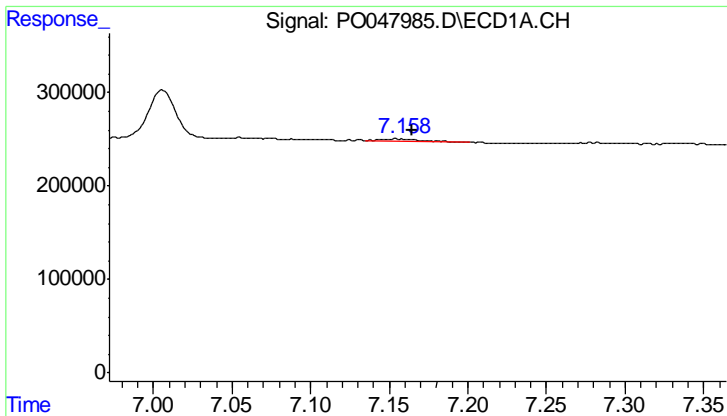
#30 AR-1254-5

R.T.: 7.541 min
 Delta R.T.: -0.018 min
 Response: 33298
 Conc: 4.51 ng/ml



#30 AR-1254-5

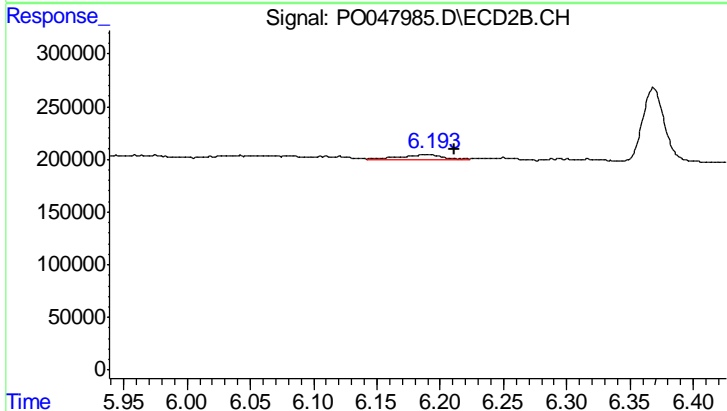
R.T.: 0.000 min
 Exp R.T. : 6.623 min
 Response: 0
 Conc: N.D.



#31 AR-1260-1

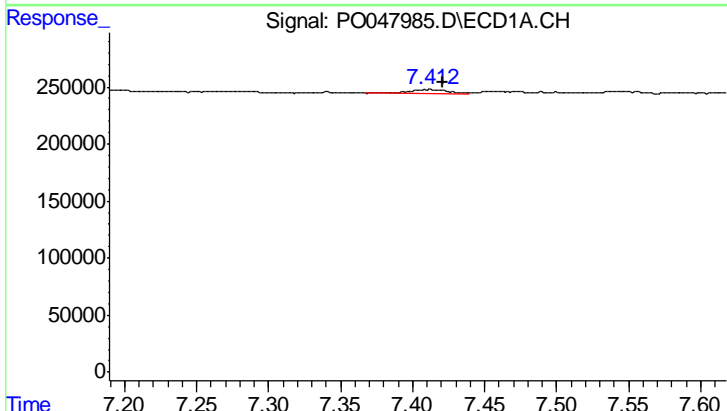
R.T.: 7.155 min
 Delta R.T.: -0.010 min
 Response: 40908
 Conc: 4.36 ng/ml

Instrument :
 ECD_O
 ClientSampleId :
 I.BLK



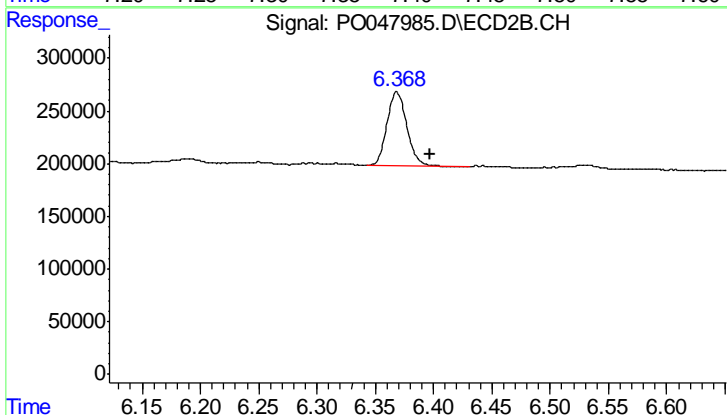
#31 AR-1260-1

R.T.: 6.191 min
 Delta R.T.: -0.021 min
 Response: 119683
 Conc: 10.83 ng/ml



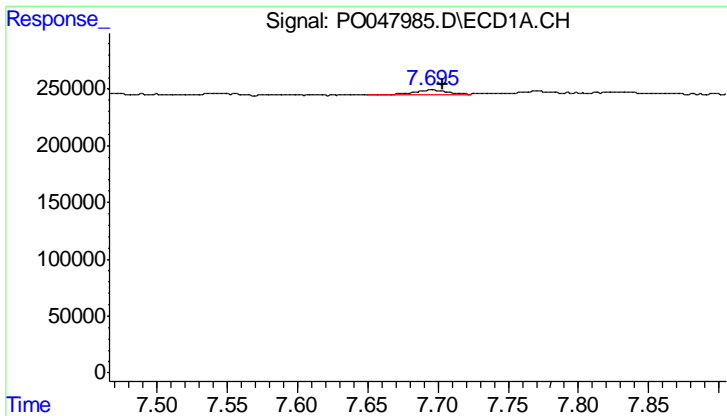
#32 AR-1260-2

R.T.: 7.412 min
 Delta R.T.: -0.009 min
 Response: 62697
 Conc: 5.62 ng/ml



#32 AR-1260-2

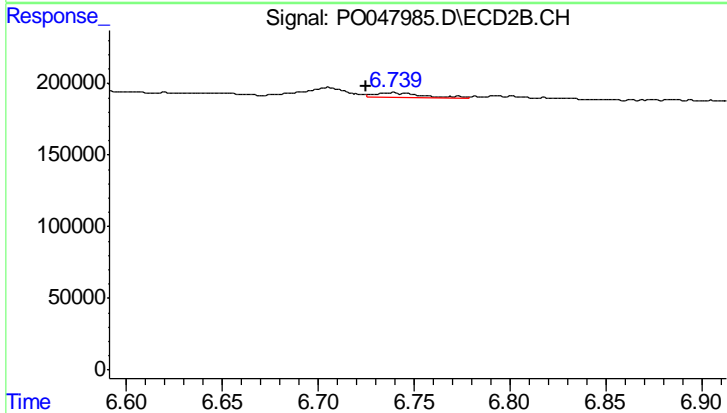
R.T.: 6.369 min
 Delta R.T.: -0.028 min
 Response: 841745
 Conc: 62.78 ng/ml



#33 AR-1260-3

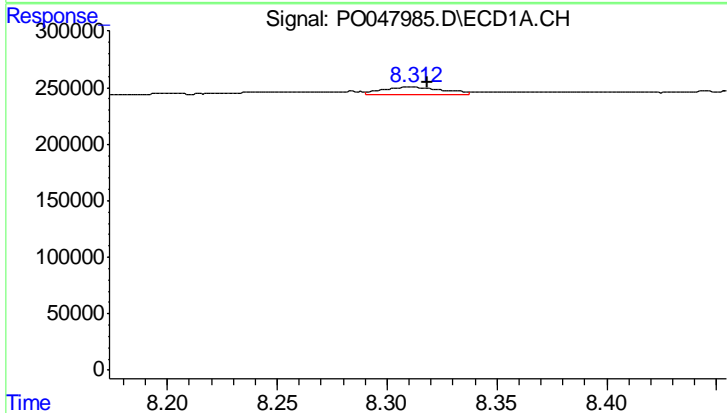
R.T.: 7.696 min
 Delta R.T.: -0.007 min
 Response: 74491
 Conc: 5.79 ng/ml

Instrument :
 ECD_O
 ClientSampled :
 I.BLK



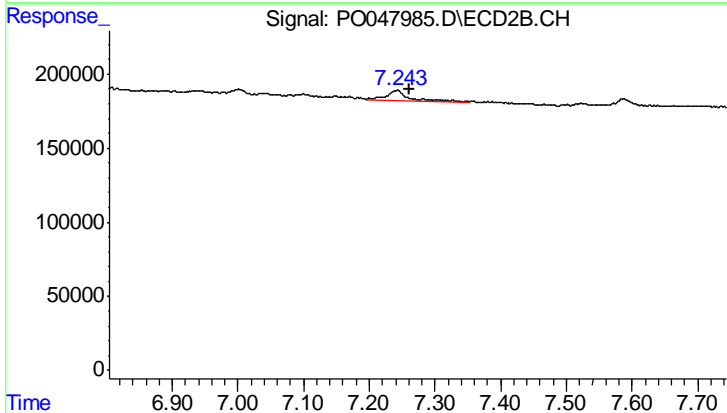
#33 AR-1260-3

R.T.: 6.739 min
 Delta R.T.: 0.014 min
 Response: 58623
 Conc: 4.03 ng/ml



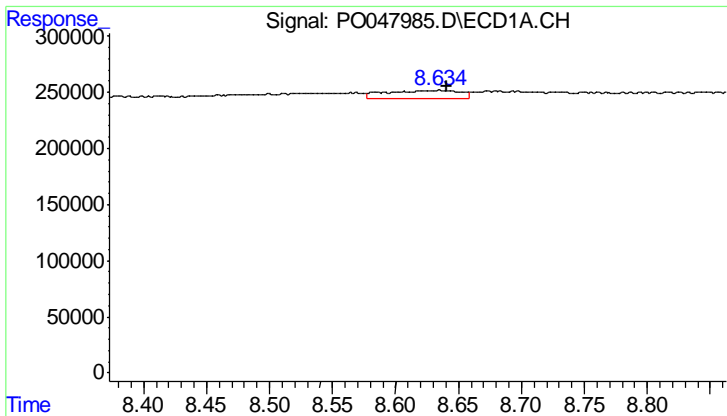
#34 AR-1260-4

R.T.: 8.311 min
 Delta R.T.: -0.007 min
 Response: 125970
 Conc: 7.08 ng/ml



#34 AR-1260-4

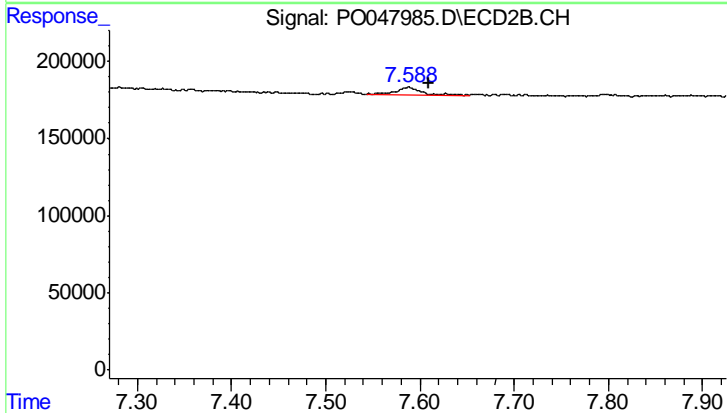
R.T.: 7.241 min
 Delta R.T.: -0.020 min
 Response: 158536
 Conc: 7.20 ng/ml



#35 AR-1260-5

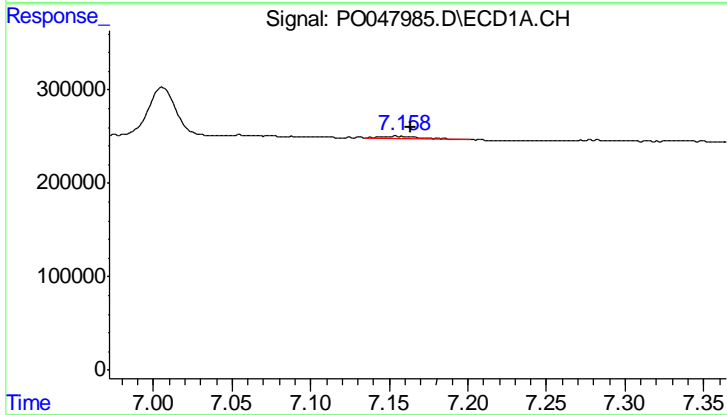
R.T.: 8.635 min
 Delta R.T.: -0.005 min
 Response: 281139
 Conc: 24.62 ng/ml

Instrument :
 ECD_O
 ClientSampleId :
 I.BLK



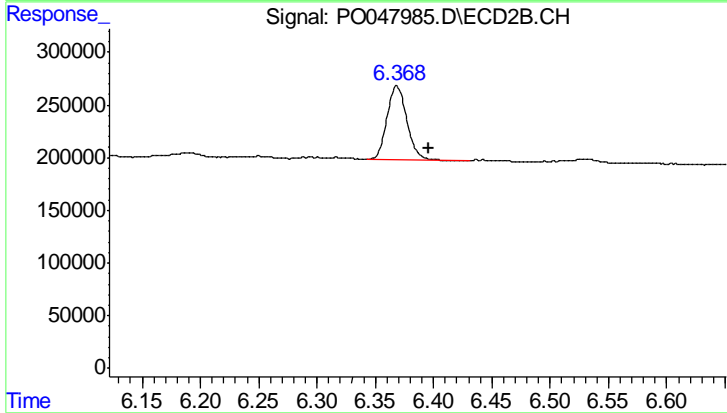
#35 AR-1260-5

R.T.: 7.587 min
 Delta R.T.: -0.022 min
 Response: 87435
 Conc: 5.60 ng/ml



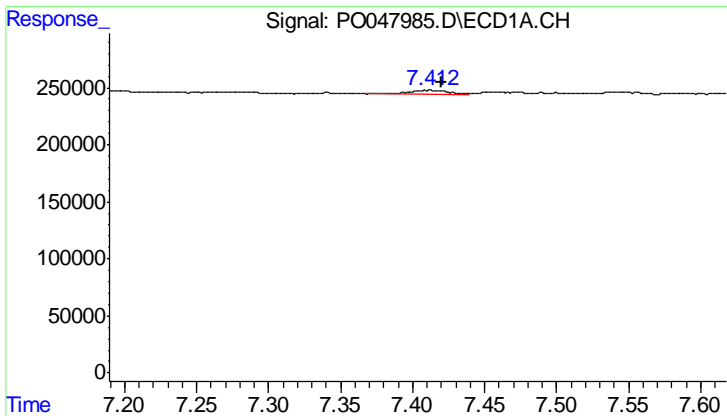
#36 AR-1262-1

R.T.: 7.155 min
 Delta R.T.: -0.009 min
 Response: 40908
 Conc: 4.94 ng/ml



#36 AR-1262-1

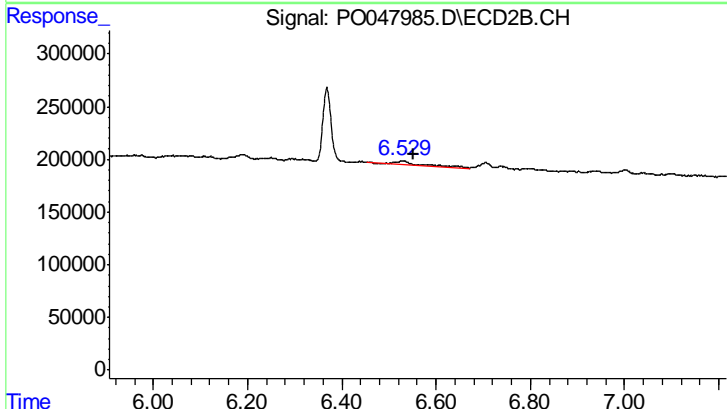
R.T.: 6.369 min
 Delta R.T.: -0.028 min
 Response: 841745
 Conc: 74.24 ng/ml



#37 AR-1262-2

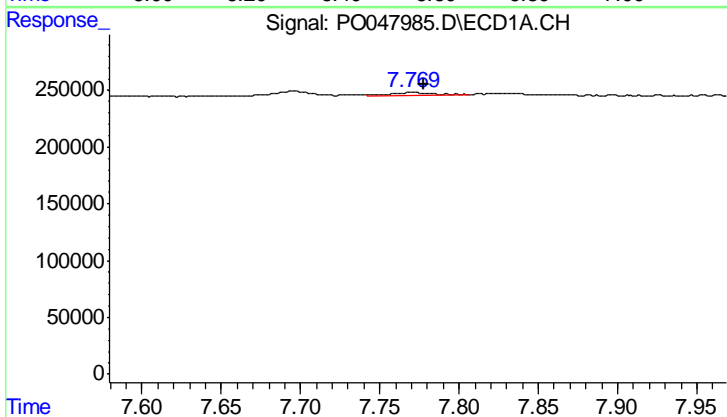
R.T.: 7.412 min
 Delta R.T.: -0.008 min
 Response: 62697
 Conc: 6.47 ng/ml

Instrument :
 ECD_O
 ClientSampled :
 I.BLK



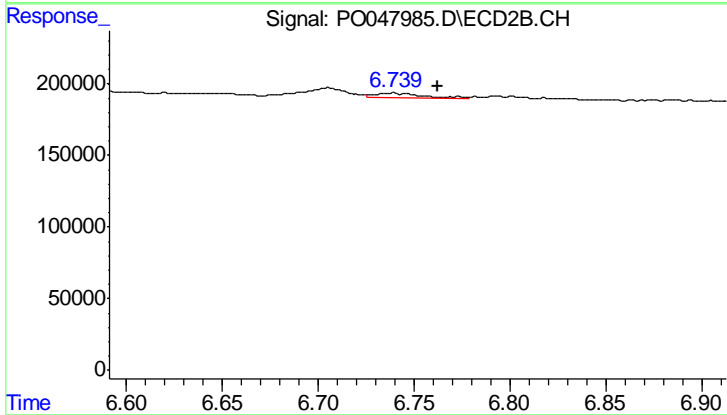
#37 AR-1262-2

R.T.: 6.529 min
 Delta R.T.: -0.024 min
 Response: 105825
 Conc: 9.38 ng/ml



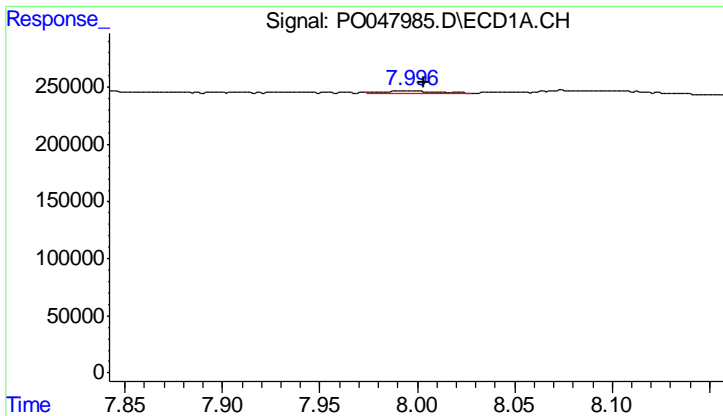
#38 AR-1262-3

R.T.: 7.770 min
 Delta R.T.: -0.008 min
 Response: 54465
 Conc: 4.44 ng/ml



#38 AR-1262-3

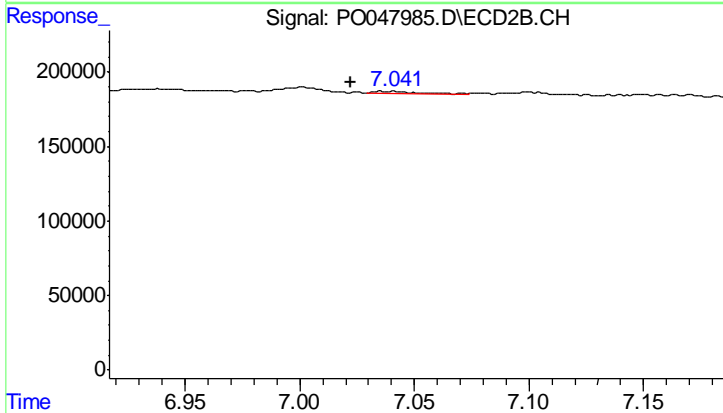
R.T.: 6.739 min
 Delta R.T.: -0.024 min
 Response: 58623
 Conc: 3.88 ng/ml



#39 AR-1262-4

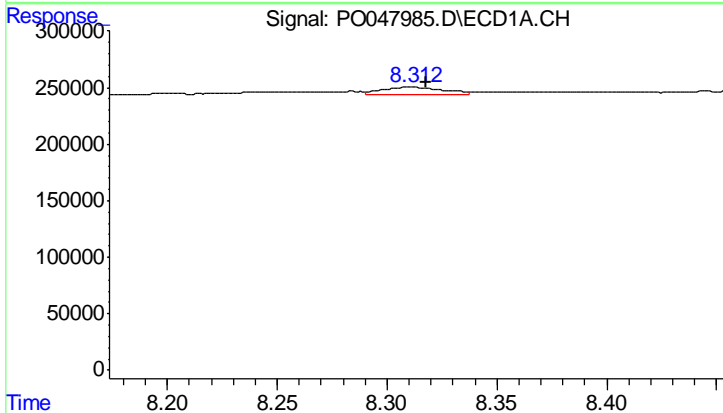
R.T.: 7.997 min
 Delta R.T.: -0.006 min
 Response: 42976
 Conc: 3.65 ng/ml

Instrument :
 ECD_O
 ClientSampleId :
 I.BLK



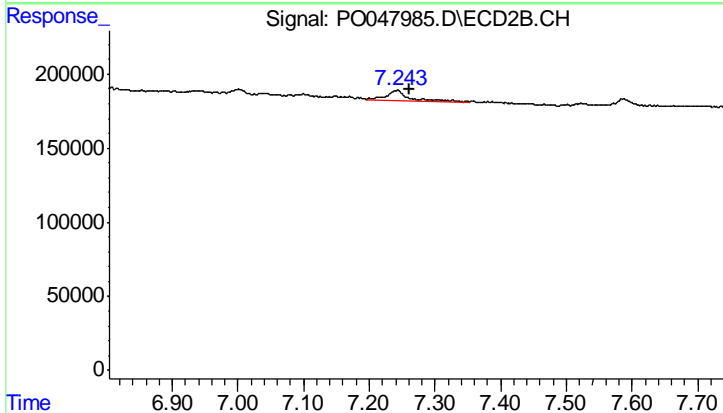
#39 AR-1262-4

R.T.: 7.038 min
 Delta R.T.: 0.016 min
 Response: 25543
 Conc: 1.94 ng/ml



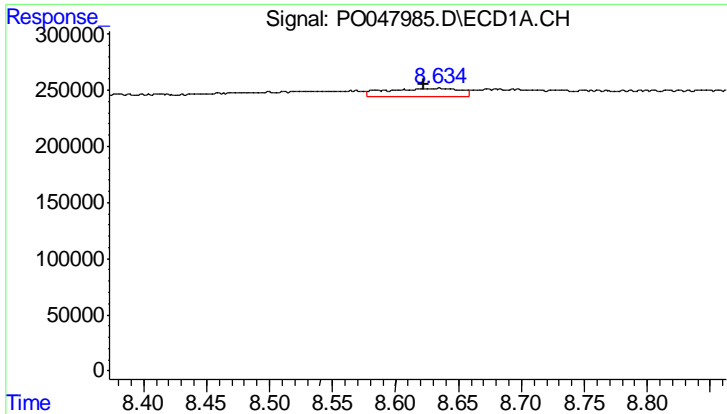
#40 AR-1262-5

R.T.: 8.311 min
 Delta R.T.: -0.007 min
 Response: 125970
 Conc: 5.86 ng/ml



#40 AR-1262-5

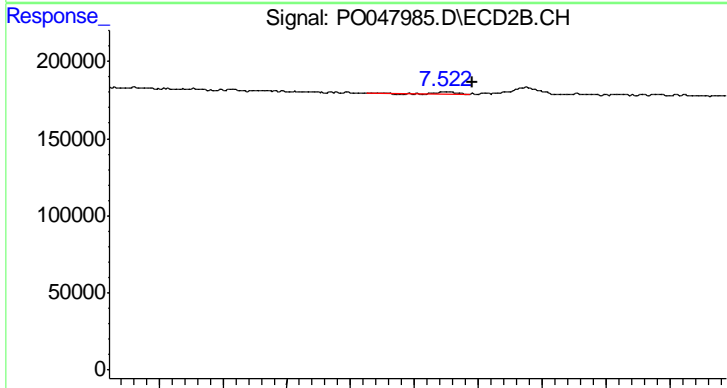
R.T.: 7.241 min
 Delta R.T.: -0.019 min
 Response: 158536
 Conc: 6.14 ng/ml



#41 AR-1268-1

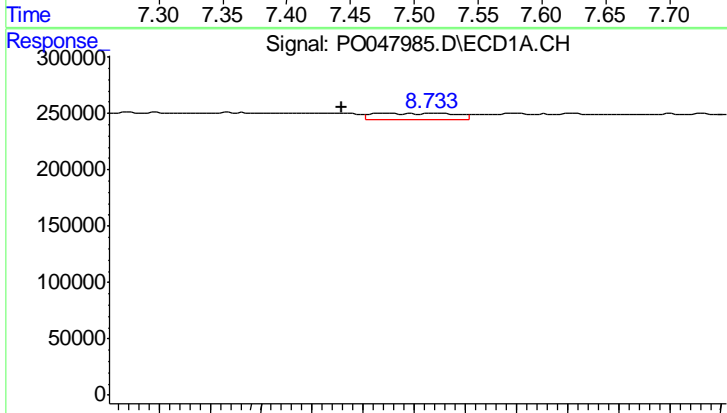
R.T.: 8.635 min
 Delta R.T.: 0.012 min
 Response: 281139
 Conc: 12.11 ng/ml

Instrument :
 ECD_O
 ClientSampled :
 I.BLK



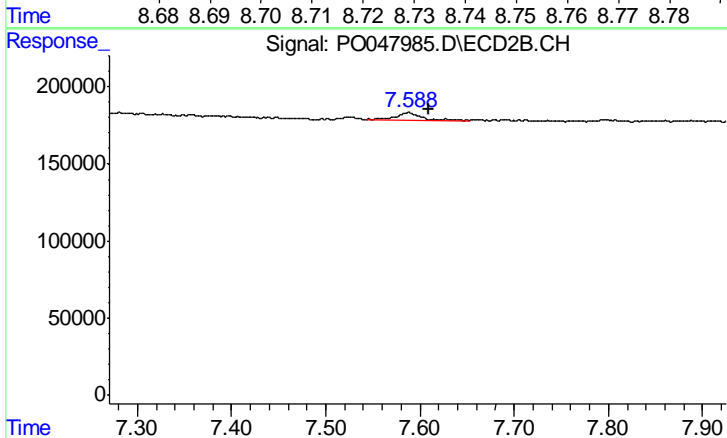
#41 AR-1268-1

R.T.: 7.524 min
 Delta R.T.: -0.021 min
 Response: 12945
 Conc: 0.50 ng/ml



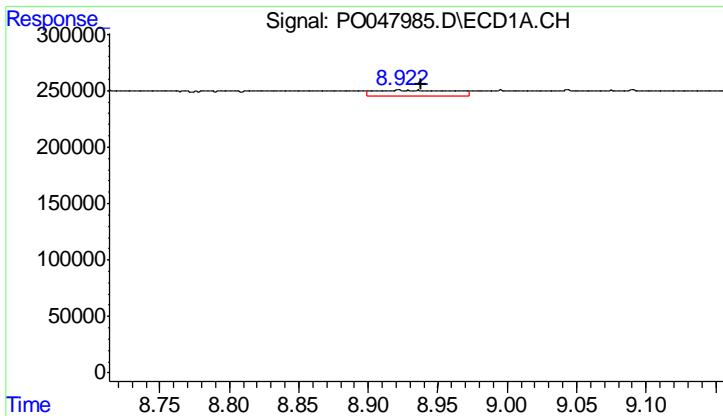
#42 AR-1268-2

R.T.: 8.734 min
 Delta R.T.: 0.018 min
 Response: 56301
 Conc: 2.63 ng/ml



#42 AR-1268-2

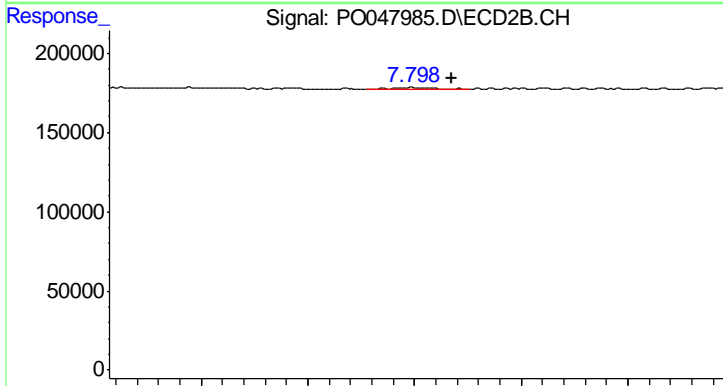
R.T.: 7.587 min
 Delta R.T.: -0.022 min
 Response: 87435
 Conc: 3.51 ng/ml



#43 AR-1268-3

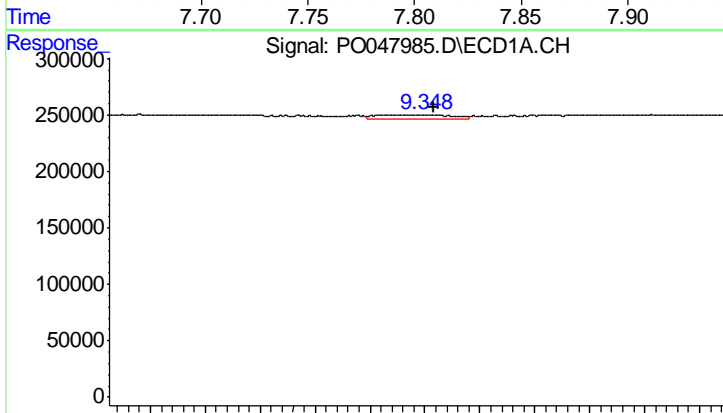
R.T.: 8.922 min
 Delta R.T.: -0.015 min
 Response: 197083
 Conc: 10.92 ng/ml

Instrument :
 ECD_O
 ClientSampled :
 I.BLK



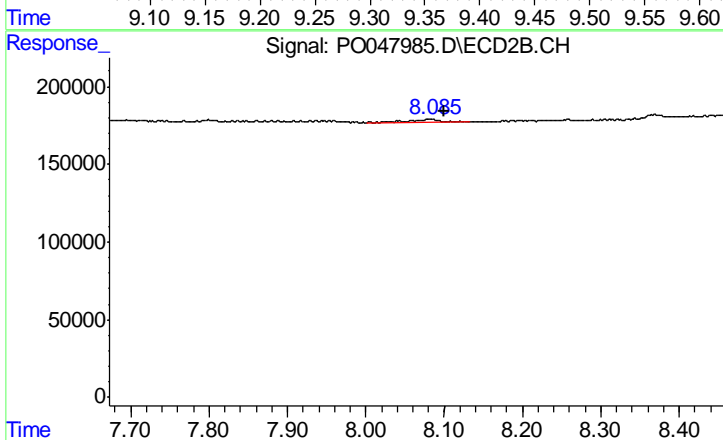
#43 AR-1268-3

R.T.: 7.798 min
 Delta R.T.: -0.020 min
 Response: 19991
 Conc: 1.01 ng/ml



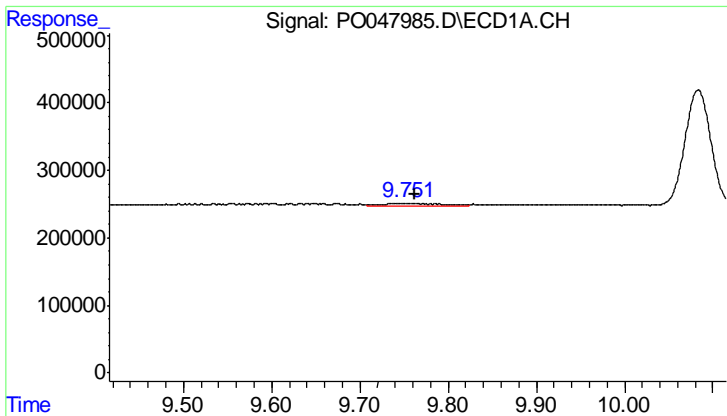
#44 AR-1268-4

R.T.: 9.346 min
 Delta R.T.: -0.012 min
 Response: 151946
 Conc: 19.06 ng/ml



#44 AR-1268-4

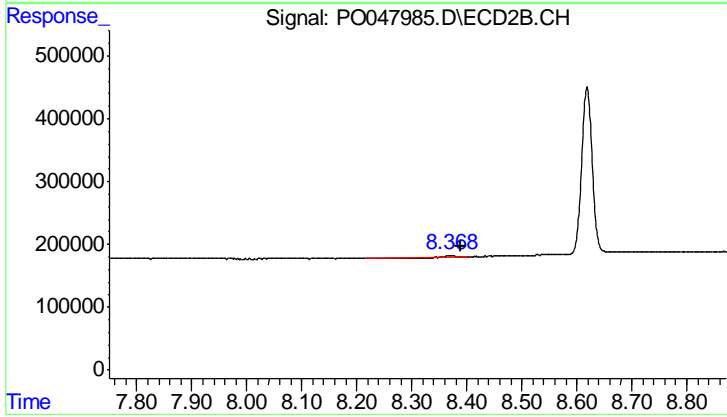
R.T.: 8.082 min
 Delta R.T.: -0.019 min
 Response: 56882
 Conc: 6.78 ng/ml



#45 AR-1268-5

R.T.: 9.753 min
Delta R.T.: -0.009 min
Response: 151057
Conc: 2.77 ng/ml

Instrument :
ECD_O
ClientSampled :
I.BLK



#45 AR-1268-5

R.T.: 8.369 min
Delta R.T.: -0.021 min
Response: 10073
Conc: 0.18 ng/ml