

Data Path : Z:\pestpcbsrv\HPCHEM1\ECD O\Data\PO081318\
 Data File : PO048026.D
 Signal(s) : Signal #1: ECD1A.CH Signal #2: ECD2B.CH
 Acq On : 13 Aug 2018 19:20
 Operator : SM/SJ
 Sample : J4442-51
 Misc :
 ALS Vial : 12 Sample Multiplier: 1

Instrument :
 ECD_O
 ClientSampled :

Integration File signal 1: autoint1.e
 Integration File signal 2: autoint2.e
 Quant Time: Aug 14 03:38:00 2018
 Quant Method : Z:\pestpcbsrv\HPCHEM1\ECD_O\methods\PO072718.M
 Quant Title : GC EXTRACTABLES
 QLast Update : Fri Jul 27 02:33:29 2018
 Response via : Initial Calibration
 Integrator: ChemStation 6890 Scale Mode: Small noise peaks clipped

Volume Inj. : 2 ul
 Signal #1 Phase : ZB-MR1 Signal #2 Phase: ZB-MR2
 Signal #1 Info : 30Mx0.32mmx 0.50µ Signal #2 Info : 30M x 0.32mm x 0.25µm

Compound	RT#1	RT#2	Resp#1	Resp#2	nq/ml	nq/ml

System Monitoring Compounds						
1) SA Tetrachlo...	4.392	3.636	4421400	5149103	21.899	20.956
2) SA Decachlor...	10.080	8.618	2875628	1867280	17.631	11.879 #
Target Compounds						
3) L1 AR-1016-1	5.273	4.492	66553	66451	13.934	11.623
4) L1 AR-1016-2	5.652	4.909	23301	24301	3.958	4.628
5) L1 AR-1016-3	5.738	4.951	49217	517130	9.924	117.774 #
6) L1 AR-1016-4	6.036	5.023	232182	71746	49.917	13.836 #
7) L1 AR-1016-5	6.176	5.164	145194	206074	27.852	35.133 #
8) L2 AR-1221-1	4.615	3.883	22020	15612	9.957	6.616 #
9) L2 AR-1221-2	4.698	3.936	84151	90423	51.462	49.846
10) L2 AR-1221-3	4.767	4.008	11754	42929	2.277	7.426 #
11) L3 AR-1232-1	5.115	4.309	4000	22307	1.860	9.485 #
12) L3 AR-1232-2	5.557	4.717	20574	71822	6.992	23.503 #
13) L3 AR-1232-3	5.590	4.766	50507	29525	11.756	6.394 #
14) L3 AR-1232-4	5.652	4.792	23301	22189	8.418	7.178
15) L3 AR-1232-5	5.738	4.951	49217	517130	22.039	288.945 #
16) L4 AR-1242-1	5.590	4.766	50507	29525	6.872	3.687 #
17) L4 AR-1242-2	5.652	4.909	23301	24301	5.034	5.899
18) L4 AR-1242-3	5.738	5.023	49217	71746	12.810	17.107 #
19) L4 AR-1242-4	6.036	5.164	232182	206074	60.397	43.639 #
20) L4 AR-1242-5	6.176	5.312	145194	177397	33.919	45.819 #
21) L5 AR-1248-1	6.036	5.164	232182	206074	37.131	27.623 #
22) L5 AR-1248-2	6.176	5.312	145194	177397	26.653	33.158
23) L5 AR-1248-3	6.437	5.515	298575	1492509	42.427	149.994 #
24) L5 AR-1248-4	6.479	5.556	391011	222299	58.245	31.720 #
25) L5 AR-1248-5	6.629	6.063	1680384	2703319	237.421	567.236 #
26) L6 AR-1254-1	6.629	5.515	1680384	1492509	137.411	121.293
27) L6 AR-1254-2	6.908	5.661	938690	1309263	125.867	125.773
28) L6 AR-1254-3	6.996	6.063	2143997	2703319	164.399	155.763
29) L6 AR-1254-4	7.279	6.290	1110061	1489072	113.895	137.428
30) L6 AR-1254-5	7.552	6.605	842955	877459	114.101	114.736
31) L7 AR-1260-1	7.156	6.193	980689	1241663	104.584	112.367
32) L7 AR-1260-2	7.410	6.377	1179884	1222480	105.808	91.175
33) L7 AR-1260-3	7.697	6.707	1402432	2162064	109.002	148.720 #
34) L7 AR-1260-4	8.310	7.275	318903	99745	17.928	4.533 #
35) L7 AR-1260-5	8.633	7.588	301854	462050	26.433	29.619
36) L8 AR-1262-1	7.156	6.377	980689	1222480	118.376	107.821
37) L8 AR-1262-2	7.410	6.532	1179884	1008237	121.742	89.347 #
38) L8 AR-1262-3	7.763	6.776	250146	263220	20.383	17.441

Data Path : Z:\pestpcbsrv\HPCHEM1\ECD O\Data\PO081318\
 Data File : PO048026.D
 Signal(s) : Signal #1: ECD1A.CH Signal #2: ECD2B.CH
 Acq On : 13 Aug 2018 19:20
 Operator : SM/SJ
 Sample : J4442-51
 Misc :
 ALS Vial : 12 Sample Multiplier: 1

Instrument :
 ECD_O
 ClientSampleId :

Integration File signal 1: autoint1.e
 Integration File signal 2: autoint2.e
 Quant Time: Aug 14 03:38:00 2018
 Quant Method : Z:\pestpcbsrv\HPCHEM1\ECD_O\methods\PO072718.M
 Quant Title : GC EXTRACTABLES
 QLast Update : Fri Jul 27 02:33:29 2018
 Response via : Initial Calibration
 Integrator: ChemStation 6890 Scale Mode: Small noise peaks clipped

Volume Inj. : 2 µl
 Signal #1 Phase : ZB-MR1 Signal #2 Phase: ZB-MR2
 Signal #1 Info : 30Mx0.32mmx 0.50µ Signal #2 Info : 30M x 0.32mm x 0.25µm

	Compound	RT#1	RT#2	Resp#1	Resp#2	nq/ml	nq/ml
39)	L8 AR-1262-4	7.986	7.041	615194	537547	52.243	40.821
40)	L8 AR-1262-5	8.310	7.275	318903	99745	14.843	3.862 #
41)	L9 AR-1268-1	8.633	7.526	301854	128164	13.006	4.929 #
42)	L9 AR-1268-2	8.684	7.588	121141	462050	5.654	18.547 #
43)	L9 AR-1268-3	8.929	7.839	120930	47049	6.698	2.384 #
44)	L9 AR-1268-4	9.349	8.080	130395	61714	16.353	7.357 #
45)	L9 AR-1268-5	9.752	8.367	368505	353256	6.763	6.470

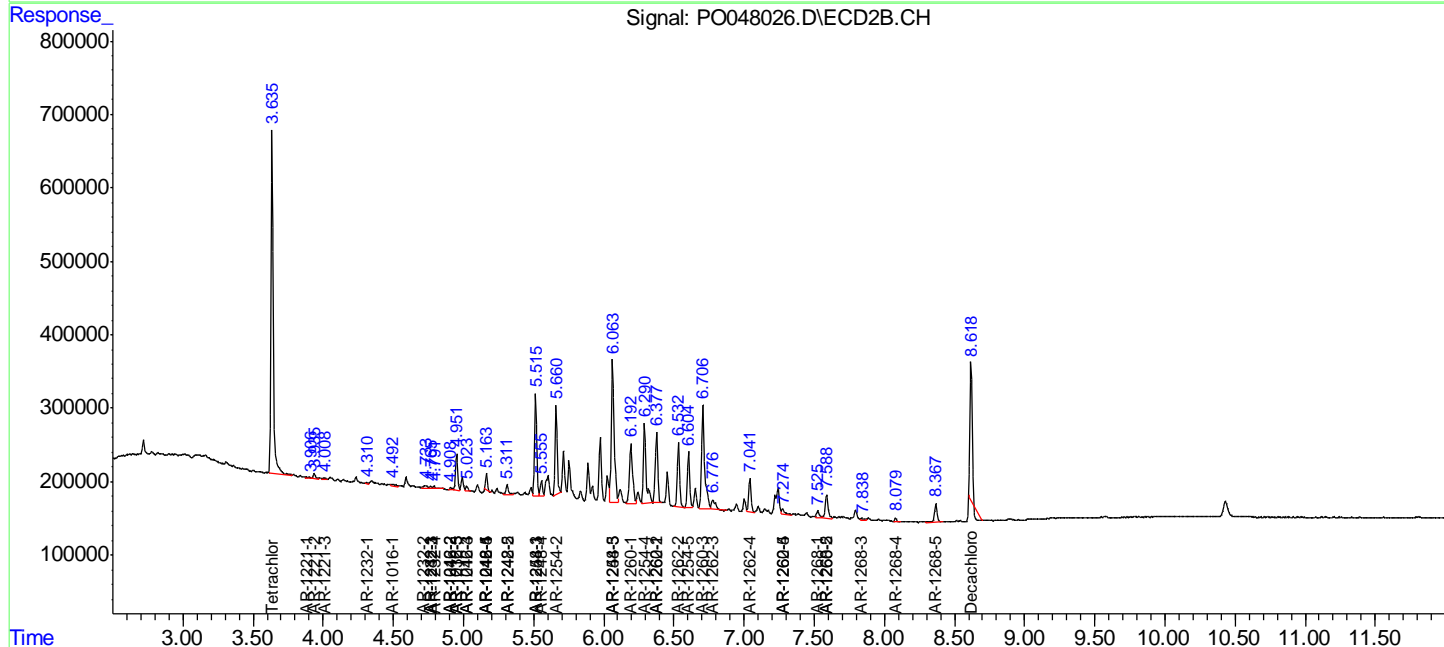
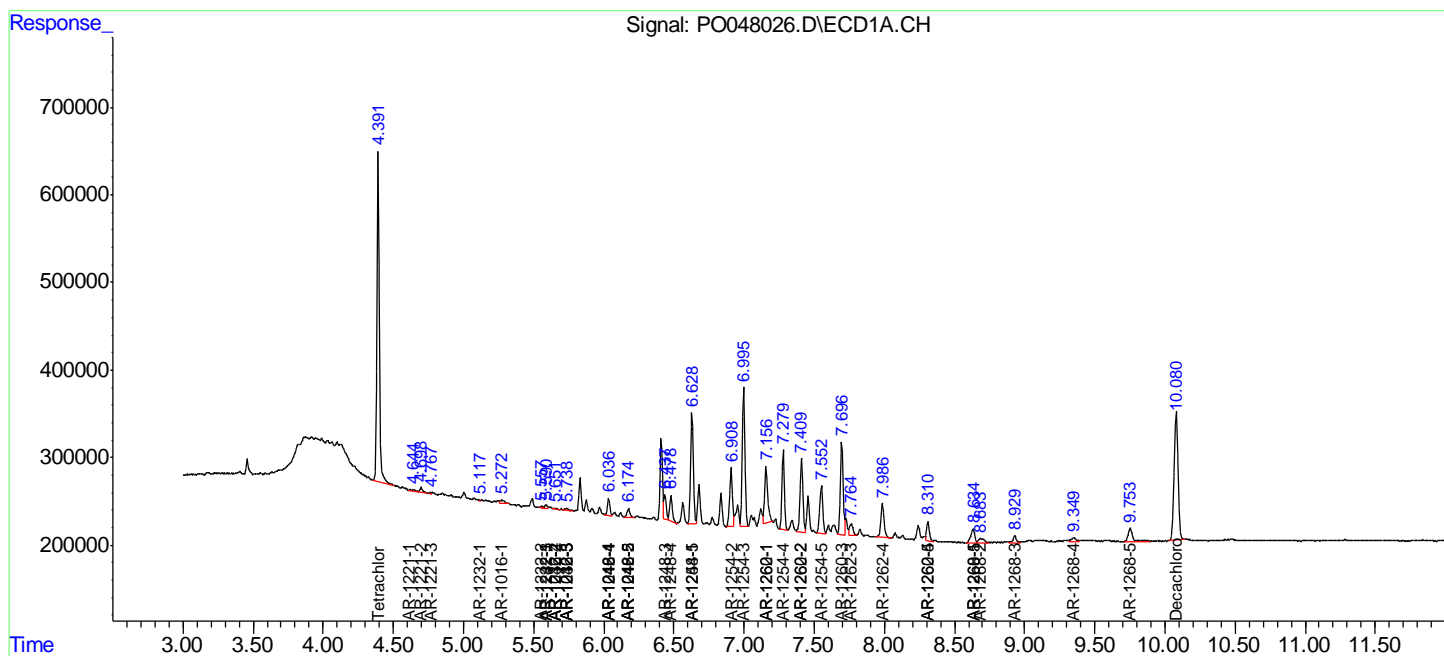
(f)=RT Delta > 1/2 Window (#)=Amounts differ by > 25% (m)=manual int.

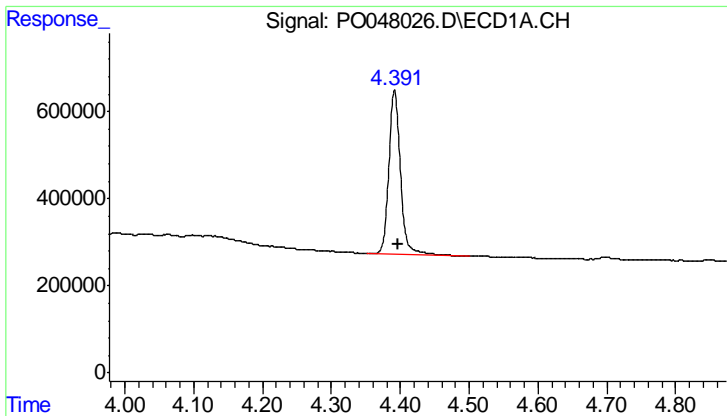
Data Path : Z:\pestpcbsrv\HPCHEM1\ECD O\Data\PO081318\
 Data File : PO048026.D
 Signal(s) : Signal #1: ECD1A.CH Signal #2: ECD2B.CH
 Acq On : 13 Aug 2018 19:20
 Operator : SM/SJ
 Sample : J4442-51
 Misc :
 ALS Vial : 12 Sample Multiplier: 1

Instrument :
 ECD_O
 ClientSampled :

Integration File signal 1: autoint1.e
 Integration File signal 2: autoint2.e
 Quant Time: Aug 14 03:38:00 2018
 Quant Method : Z:\pestpcbsrv\HPCHEM1\ECD_O\methods\PO072718.M
 Quant Title : GC EXTRACTABLES
 QLast Update : Fri Jul 27 02:33:29 2018
 Response via : Initial Calibration
 Integrator: ChemStation 6890 Scale Mode: Small noise peaks clipped

Volume Inj. : 2 µl
 Signal #1 Phase : ZB-MR1 Signal #2 Phase: ZB-MR2
 Signal #1 Info : 30Mx0.32mmx 0.50µ Signal #2 Info : 30M x 0.32mm x 0.25µm

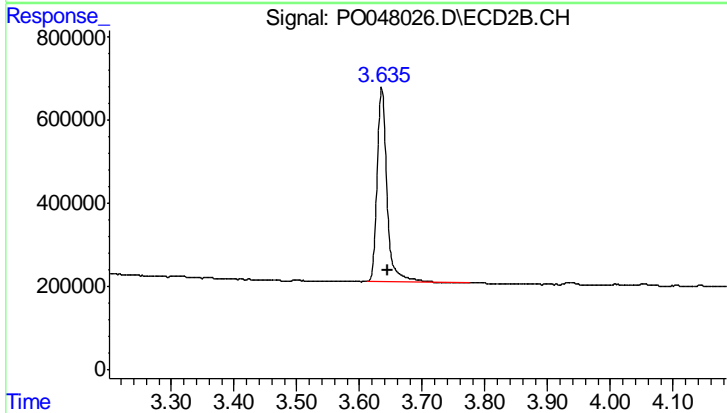




#1 Tetrachloro-m-xylene

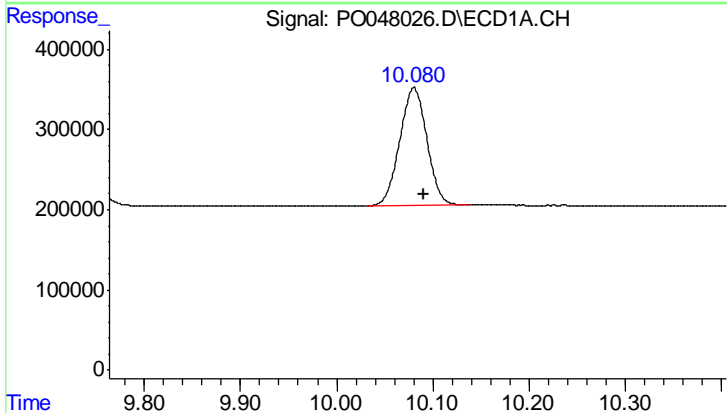
R.T.: 4.392 min
 Delta R.T.: -0.006 min
 Response: 4421400
 Conc: 21.90 ng/ml

Instrument :
 ECD_O
 ClientSampled :



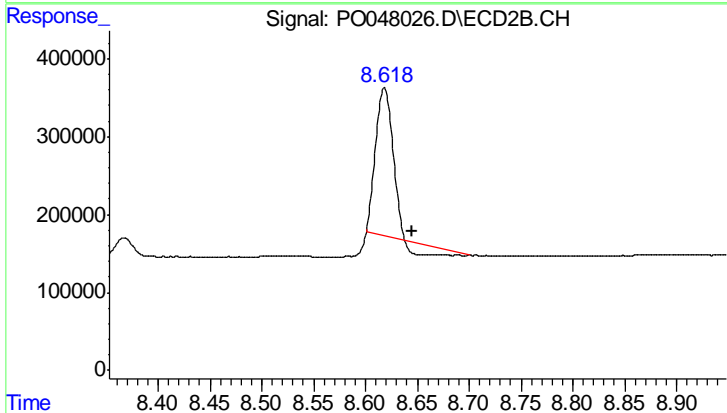
#1 Tetrachloro-m-xylene

R.T.: 3.636 min
 Delta R.T.: -0.010 min
 Response: 5149103
 Conc: 20.96 ng/ml



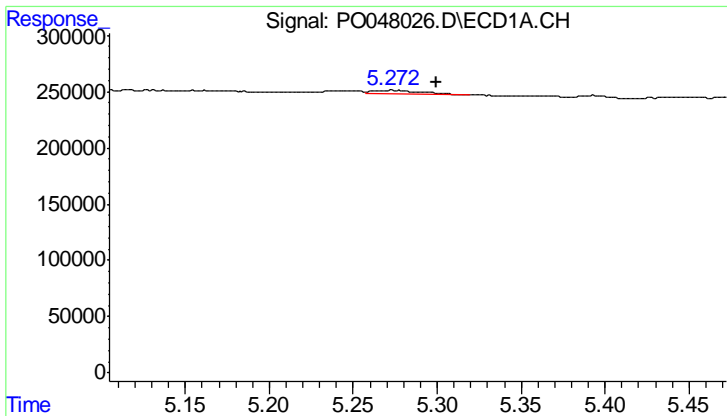
#2 Decachlorobiphenyl

R.T.: 10.080 min
 Delta R.T.: -0.010 min
 Response: 2875628
 Conc: 17.63 ng/ml



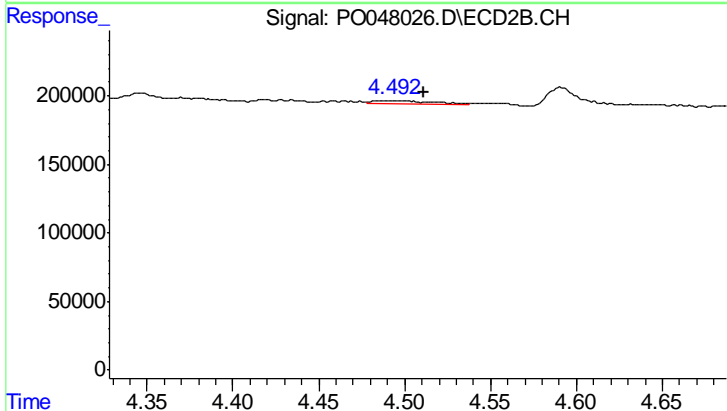
#2 Decachlorobiphenyl

R.T.: 8.618 min
 Delta R.T.: -0.026 min
 Response: 1867280
 Conc: 11.88 ng/ml

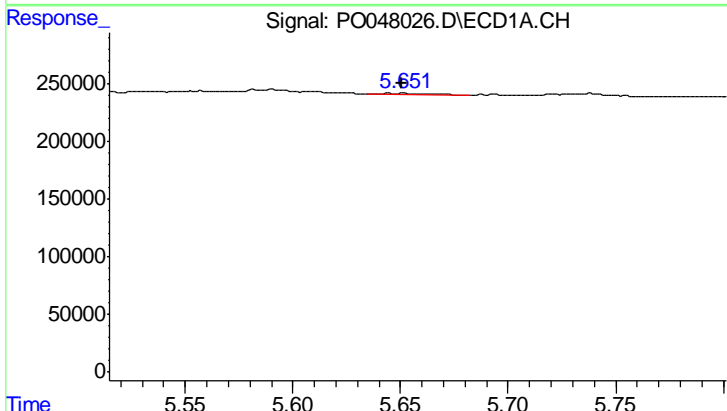


#3 AR-1016-1
 R.T.: 5.273 min
 Delta R.T.: -0.026 min
 Response: 66553
 Conc: 13.93 ng/ml

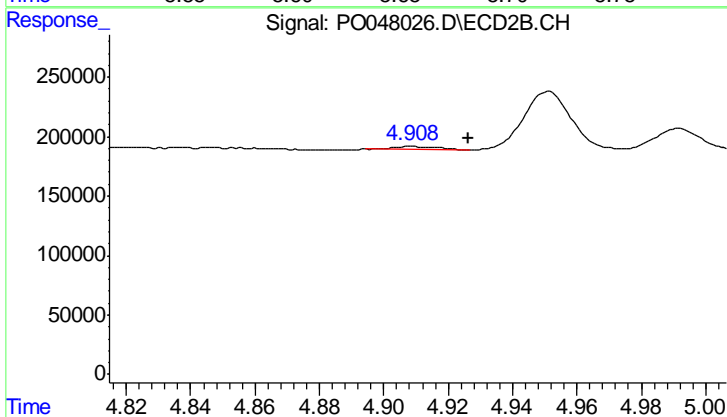
Instrument :
 ECD_O
 ClientSampled :



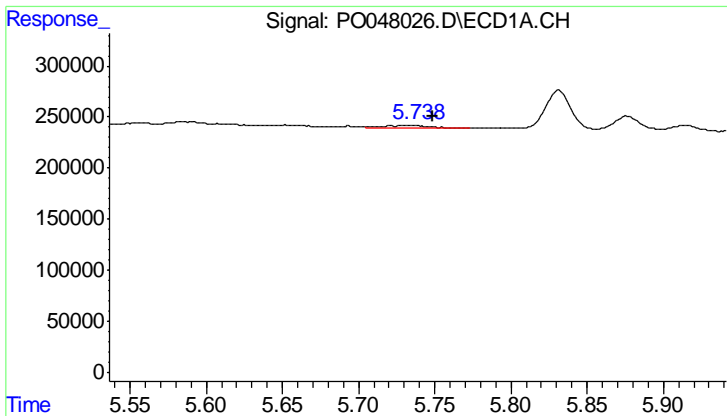
#3 AR-1016-1
 R.T.: 4.492 min
 Delta R.T.: -0.019 min
 Response: 66451
 Conc: 11.62 ng/ml



#4 AR-1016-2
 R.T.: 5.652 min
 Delta R.T.: 0.001 min
 Response: 23301
 Conc: 3.96 ng/ml

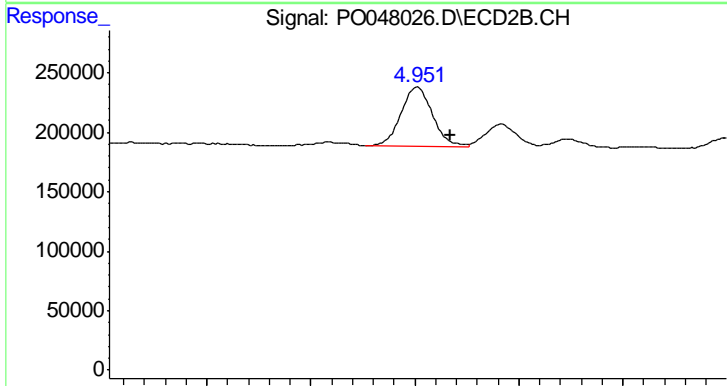


#4 AR-1016-2
 R.T.: 4.909 min
 Delta R.T.: -0.017 min
 Response: 24301
 Conc: 4.63 ng/ml

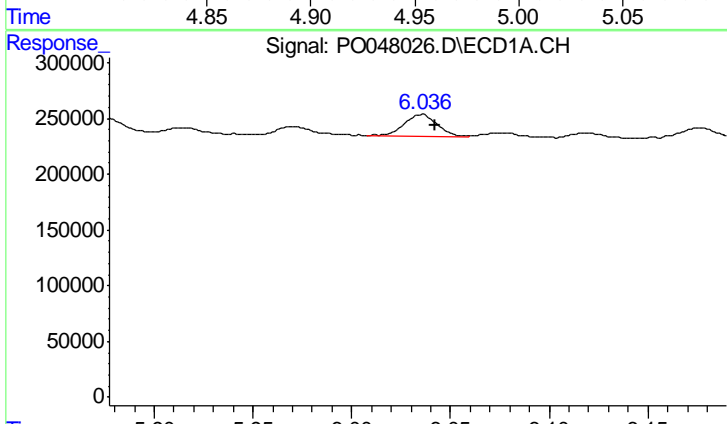


#5 AR-1016-3
 R.T.: 5.738 min
 Delta R.T.: -0.011 min
 Response: 49217
 Conc: 9.92 ng/ml

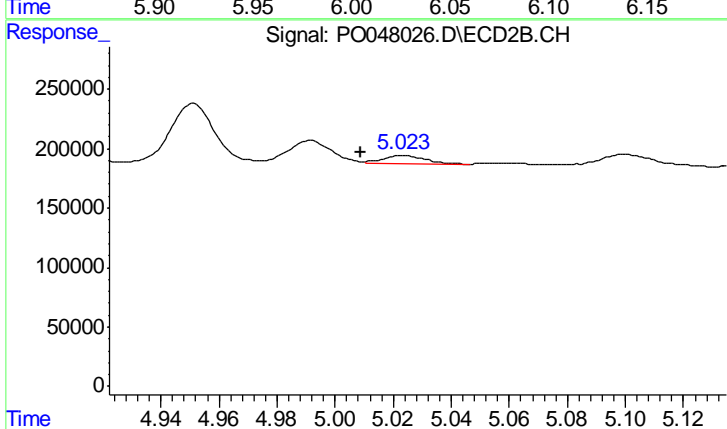
Instrument :
 ECD_O
 ClientSampled :



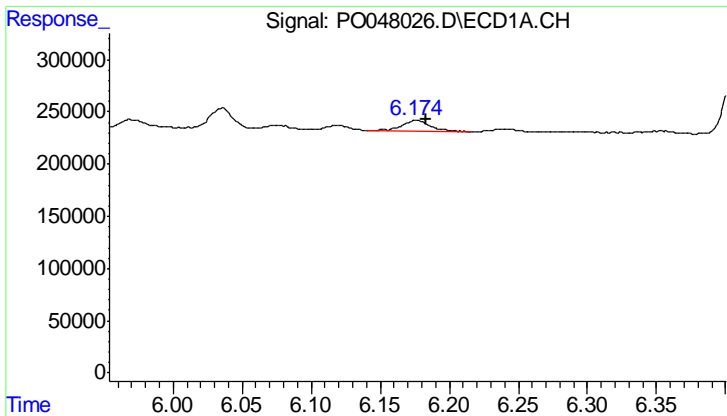
#5 AR-1016-3
 R.T.: 4.951 min
 Delta R.T.: -0.016 min
 Response: 517130
 Conc: 117.77 ng/ml



#6 AR-1016-4
 R.T.: 6.036 min
 Delta R.T.: -0.007 min
 Response: 232182
 Conc: 49.92 ng/ml



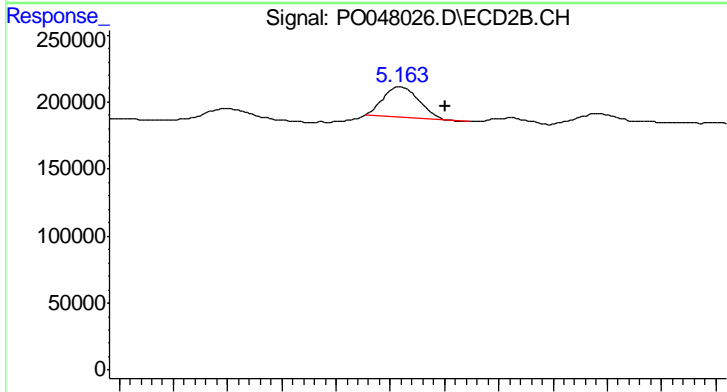
#6 AR-1016-4
 R.T.: 5.023 min
 Delta R.T.: 0.015 min
 Response: 71746
 Conc: 13.84 ng/ml



#7 AR-1016-5

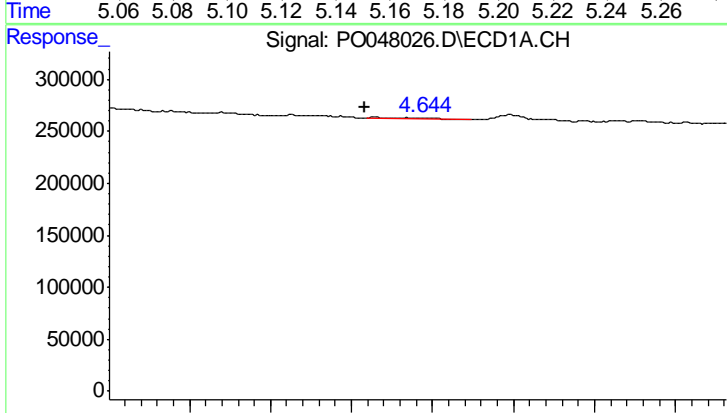
R.T.: 6.176 min
 Delta R.T.: -0.008 min
 Response: 145194
 Conc: 27.85 ng/ml

Instrument :
 ECD_O
 ClientSampled :



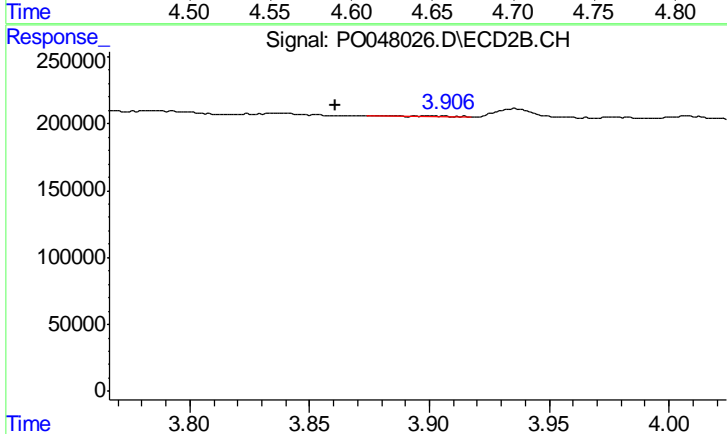
#7 AR-1016-5

R.T.: 5.164 min
 Delta R.T.: -0.016 min
 Response: 206074
 Conc: 35.13 ng/ml



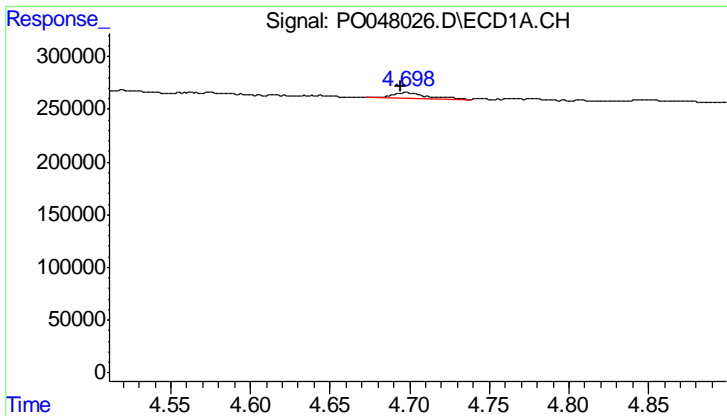
#8 AR-1221-1

R.T.: 4.615 min
 Delta R.T.: 0.007 min
 Response: 22020
 Conc: 9.96 ng/ml



#8 AR-1221-1

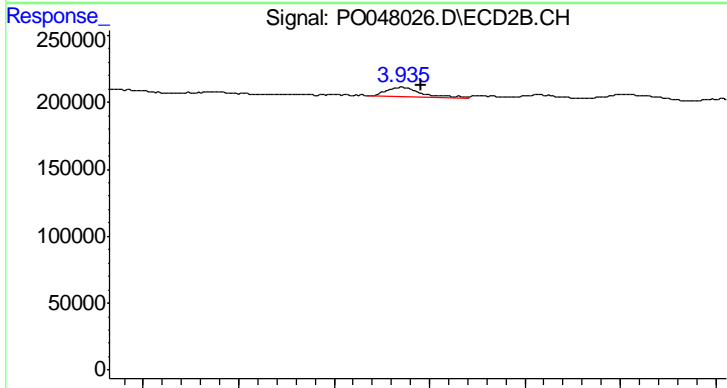
R.T.: 3.883 min
 Delta R.T.: 0.022 min
 Response: 15612
 Conc: 6.62 ng/ml



#9 AR-1221-2

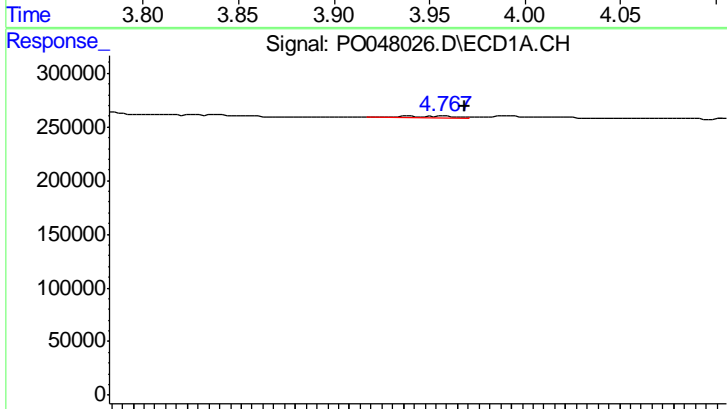
R.T.: 4.698 min
 Delta R.T.: 0.004 min
 Response: 84151
 Conc: 51.46 ng/ml

Instrument :
 ECD_O
 ClientSampled :



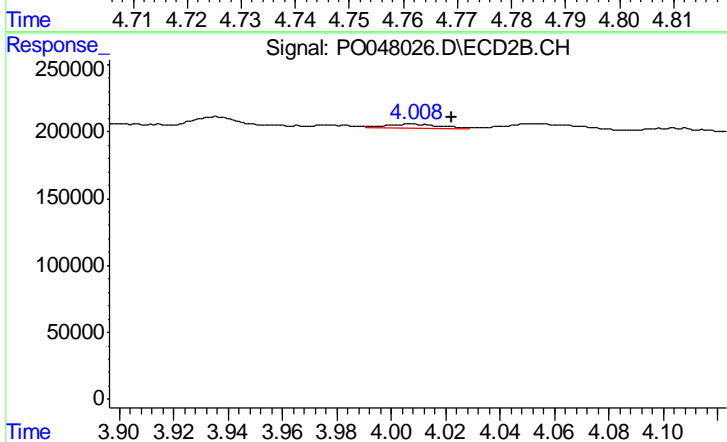
#9 AR-1221-2

R.T.: 3.936 min
 Delta R.T.: -0.010 min
 Response: 90423
 Conc: 49.85 ng/ml



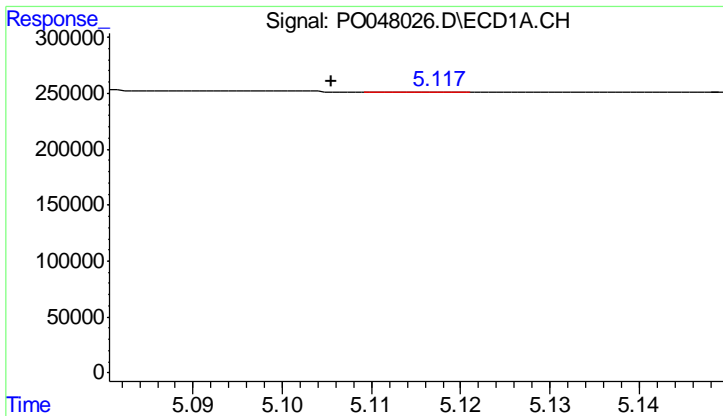
#10 AR-1221-3

R.T.: 4.767 min
 Delta R.T.: -0.004 min
 Response: 11754
 Conc: 2.28 ng/ml



#10 AR-1221-3

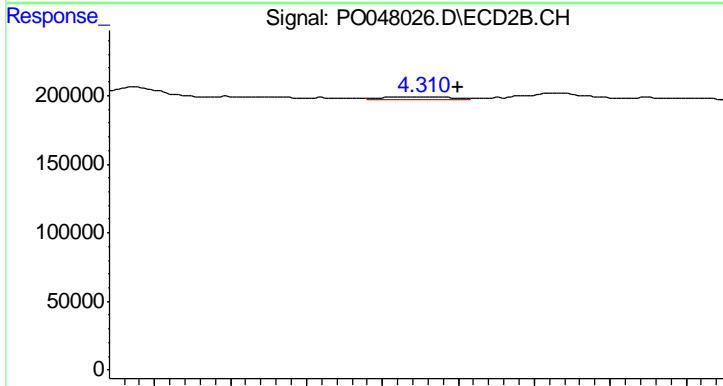
R.T.: 4.008 min
 Delta R.T.: -0.014 min
 Response: 42929
 Conc: 7.43 ng/ml



#11 AR-1232-1

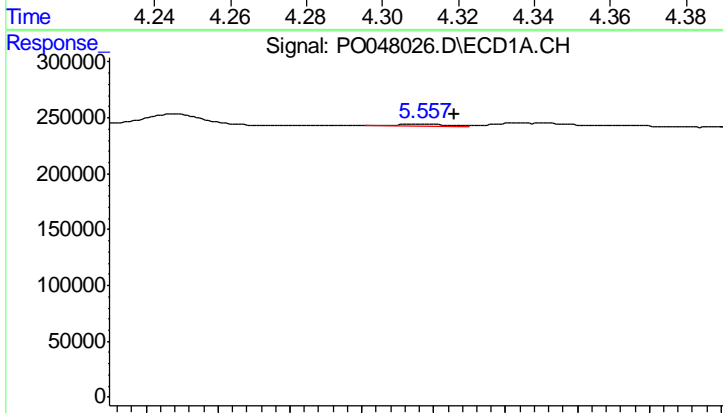
R.T.: 5.115 min
 Delta R.T.: 0.010 min
 Response: 4000
 Conc: 1.86 ng/ml

Instrument :
 ECD_O
 ClientSampled :



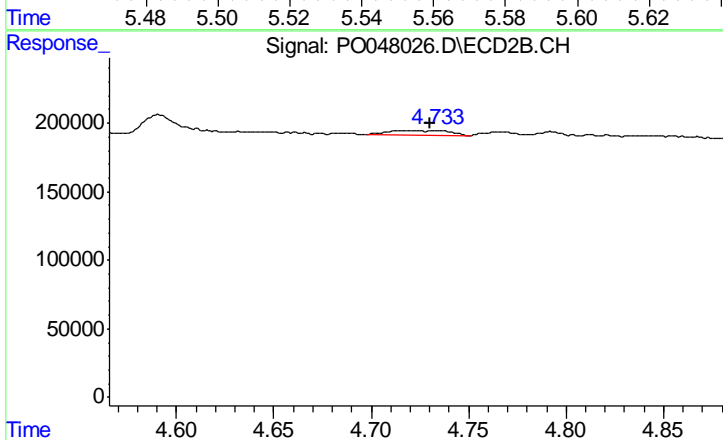
#11 AR-1232-1

R.T.: 4.309 min
 Delta R.T.: -0.010 min
 Response: 22307
 Conc: 9.49 ng/ml



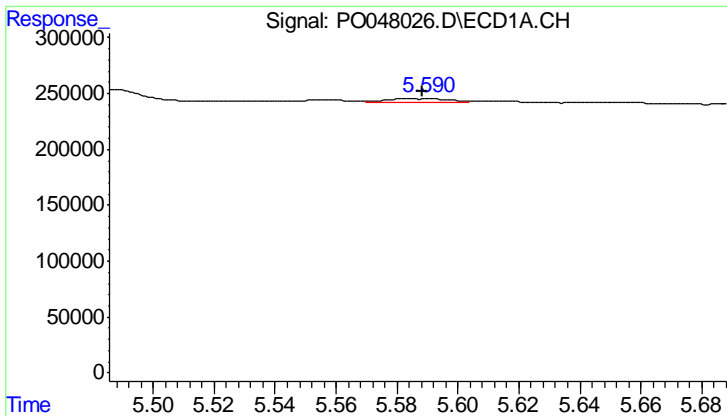
#12 AR-1232-2

R.T.: 5.557 min
 Delta R.T.: -0.009 min
 Response: 20574
 Conc: 6.99 ng/ml



#12 AR-1232-2

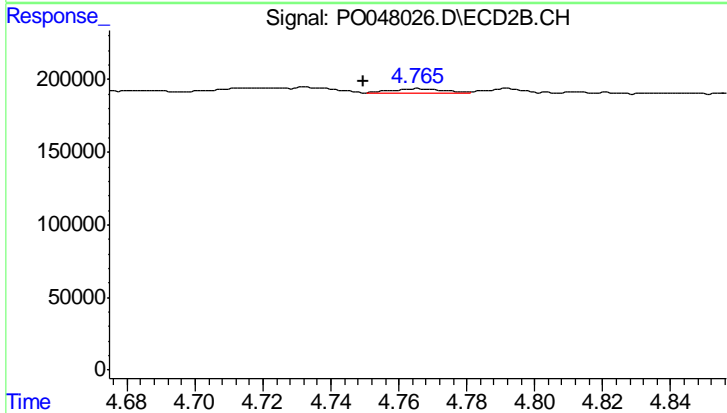
R.T.: 4.717 min
 Delta R.T.: -0.013 min
 Response: 71822
 Conc: 23.50 ng/ml



#13 AR-1232-3

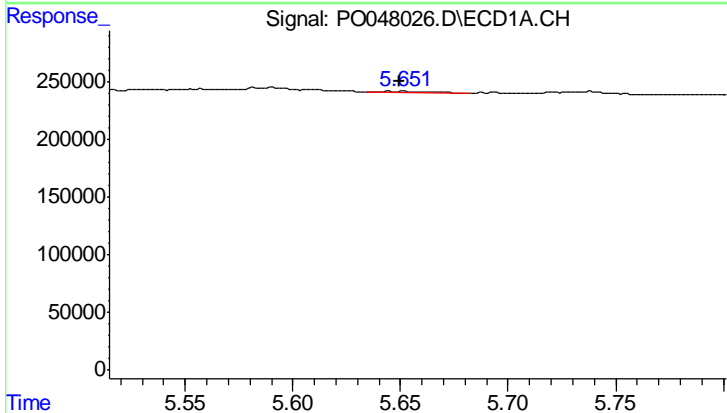
R.T.: 5.590 min
 Delta R.T.: 0.002 min
 Response: 50507
 Conc: 11.76 ng/ml

Instrument :
 ECD_O
 ClientSampled :



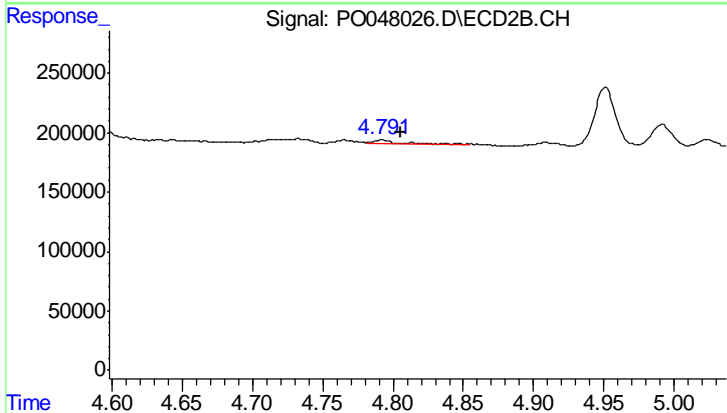
#13 AR-1232-3

R.T.: 4.766 min
 Delta R.T.: 0.017 min
 Response: 29525
 Conc: 6.39 ng/ml



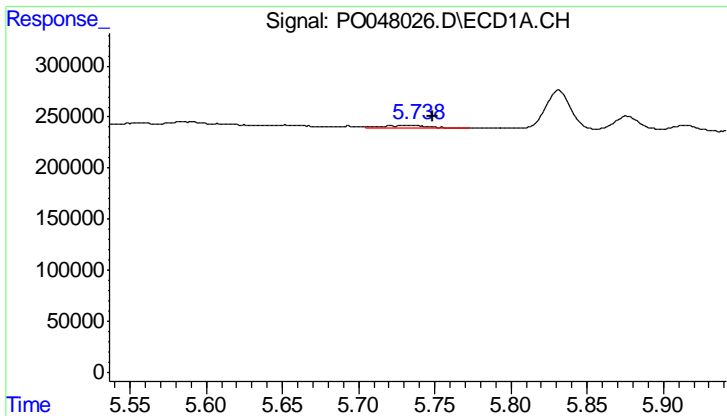
#14 AR-1232-4

R.T.: 5.652 min
 Delta R.T.: 0.002 min
 Response: 23301
 Conc: 8.42 ng/ml



#14 AR-1232-4

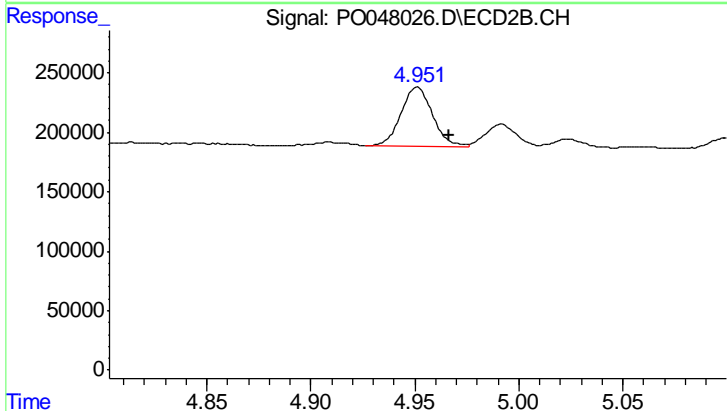
R.T.: 4.792 min
 Delta R.T.: -0.013 min
 Response: 22189
 Conc: 7.18 ng/ml



#15 AR-1232-5

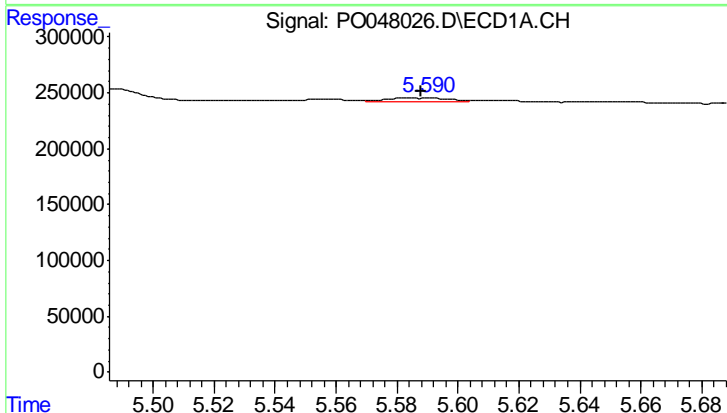
R.T.: 5.738 min
 Delta R.T.: -0.011 min
 Response: 49217
 Conc: 22.04 ng/ml

Instrument :
 ECD_O
 ClientSampled :



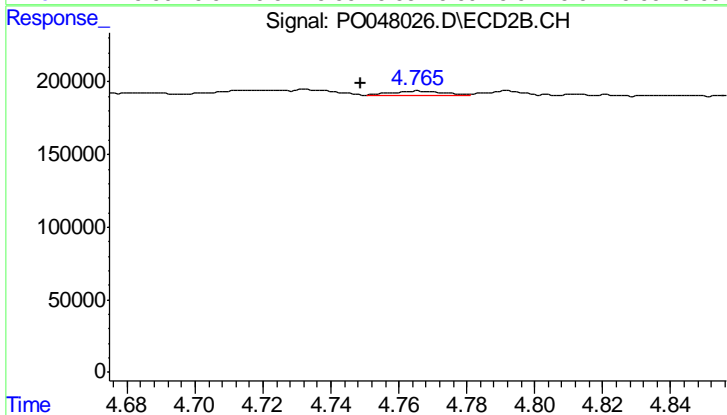
#15 AR-1232-5

R.T.: 4.951 min
 Delta R.T.: -0.015 min
 Response: 517130
 Conc: 288.94 ng/ml



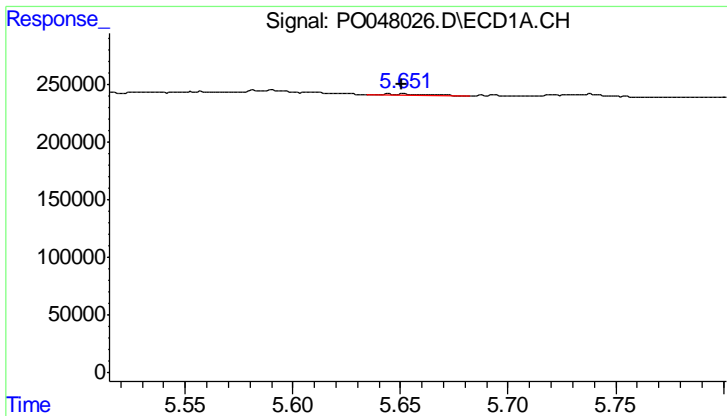
#16 AR-1242-1

R.T.: 5.590 min
 Delta R.T.: 0.002 min
 Response: 50507
 Conc: 6.87 ng/ml



#16 AR-1242-1

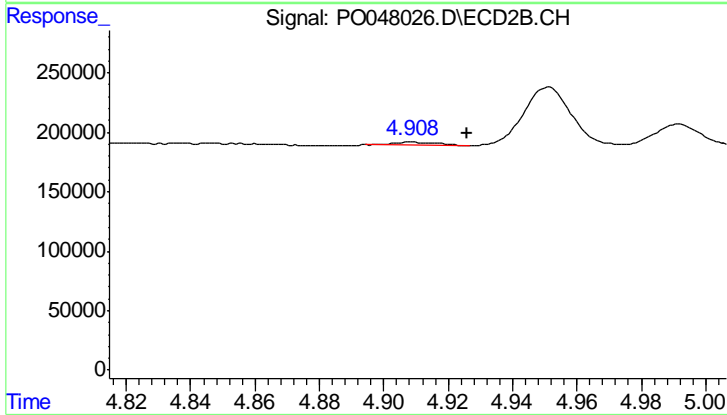
R.T.: 4.766 min
 Delta R.T.: 0.017 min
 Response: 29525
 Conc: 3.69 ng/ml



#17 AR-1242-2

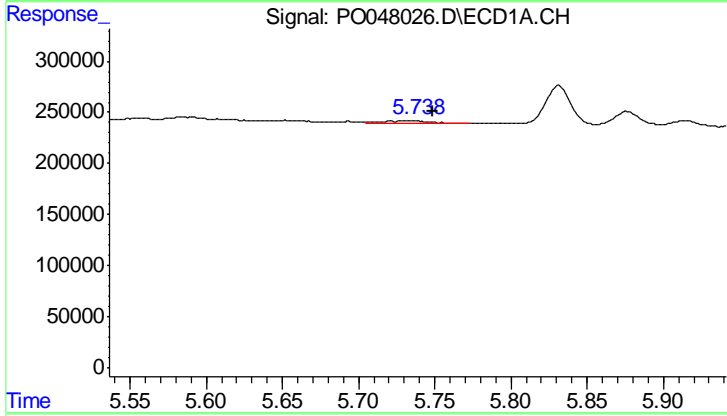
R.T.: 5.652 min
 Delta R.T.: 0.001 min
 Response: 23301
 Conc: 5.03 ng/ml

Instrument :
 ECD_O
 ClientSampled :



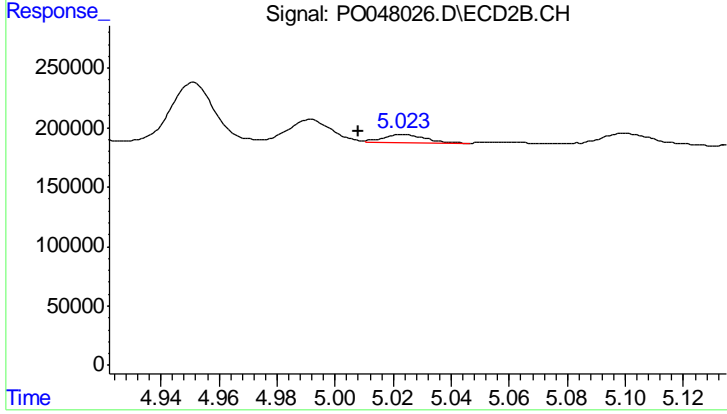
#17 AR-1242-2

R.T.: 4.909 min
 Delta R.T.: -0.017 min
 Response: 24301
 Conc: 5.90 ng/ml



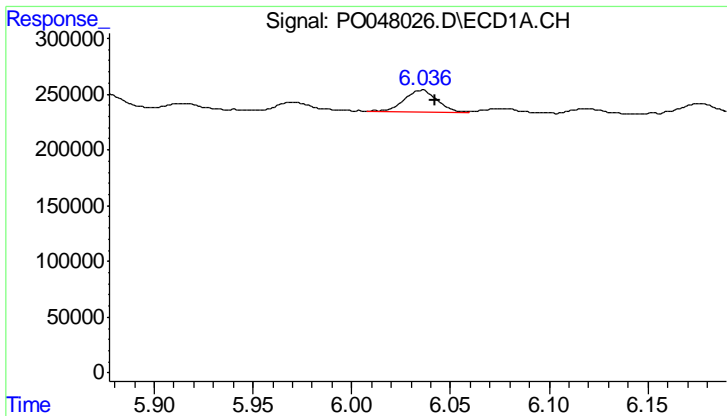
#18 AR-1242-3

R.T.: 5.738 min
 Delta R.T.: -0.011 min
 Response: 49217
 Conc: 12.81 ng/ml



#18 AR-1242-3

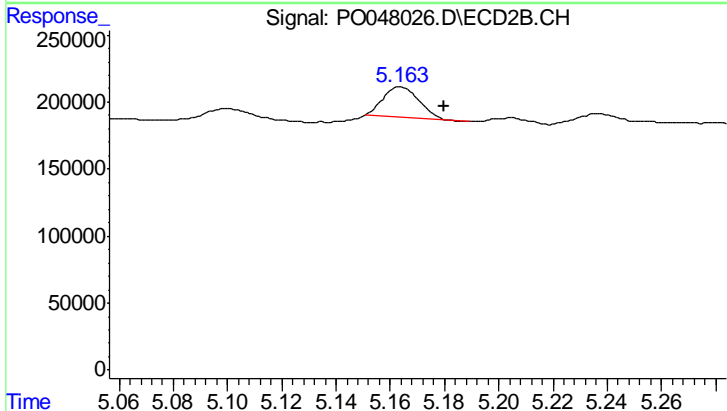
R.T.: 5.023 min
 Delta R.T.: 0.015 min
 Response: 71746
 Conc: 17.11 ng/ml



#19 AR-1242-4

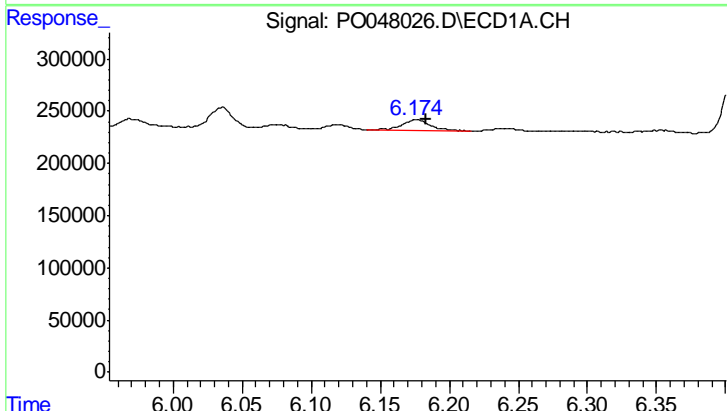
R.T.: 6.036 min
 Delta R.T.: -0.006 min
 Response: 232182
 Conc: 60.40 ng/ml

Instrument :
 ECD_O
 ClientSampled :



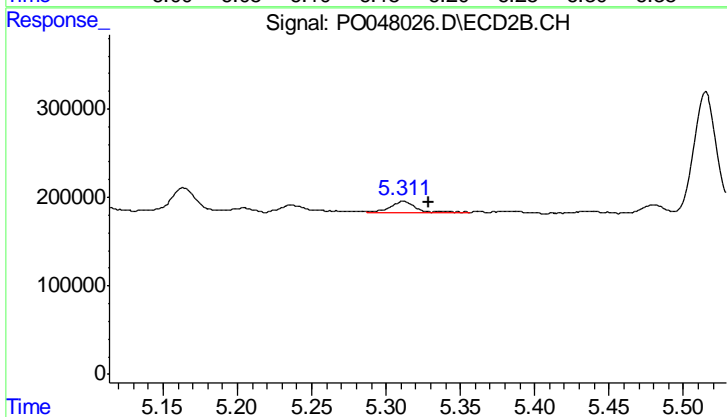
#19 AR-1242-4

R.T.: 5.164 min
 Delta R.T.: -0.016 min
 Response: 206074
 Conc: 43.64 ng/ml



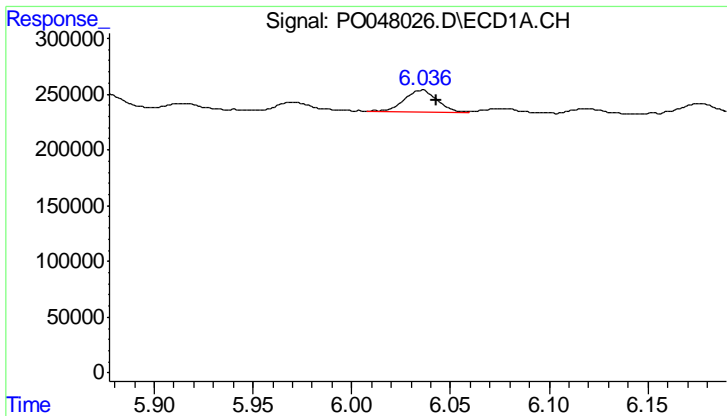
#20 AR-1242-5

R.T.: 6.176 min
 Delta R.T.: -0.007 min
 Response: 145194
 Conc: 33.92 ng/ml



#20 AR-1242-5

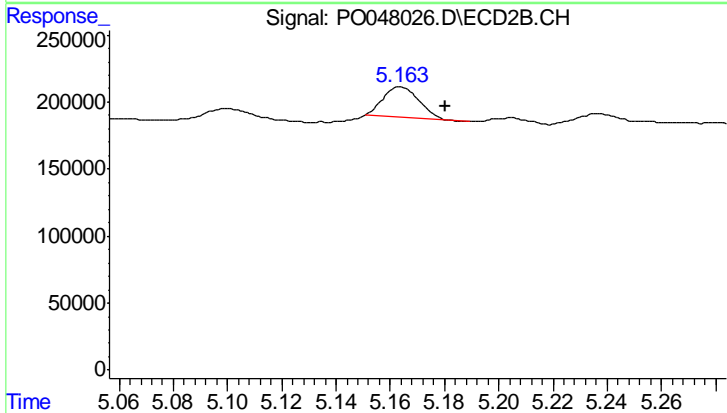
R.T.: 5.312 min
 Delta R.T.: -0.017 min
 Response: 177397
 Conc: 45.82 ng/ml



#21 AR-1248-1

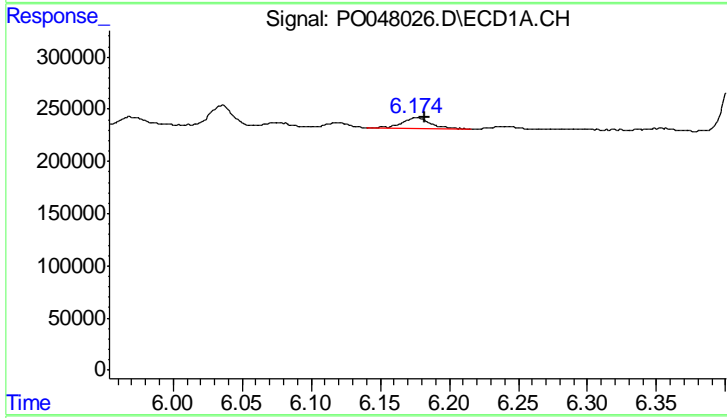
R.T.: 6.036 min
 Delta R.T.: -0.007 min
 Response: 232182
 Conc: 37.13 ng/ml

Instrument :
 ECD_O
 ClientSampled :



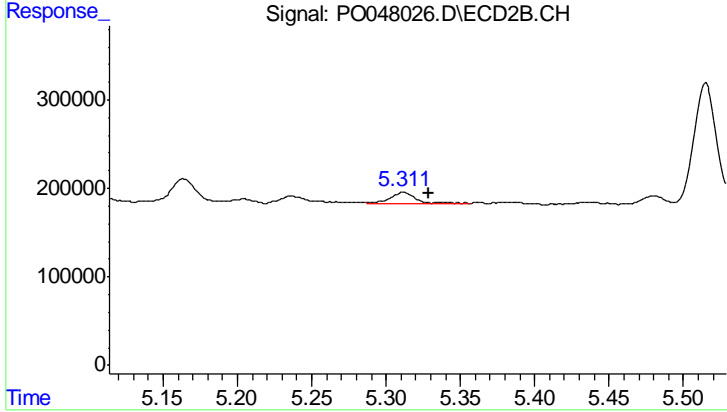
#21 AR-1248-1

R.T.: 5.164 min
 Delta R.T.: -0.016 min
 Response: 206074
 Conc: 27.62 ng/ml



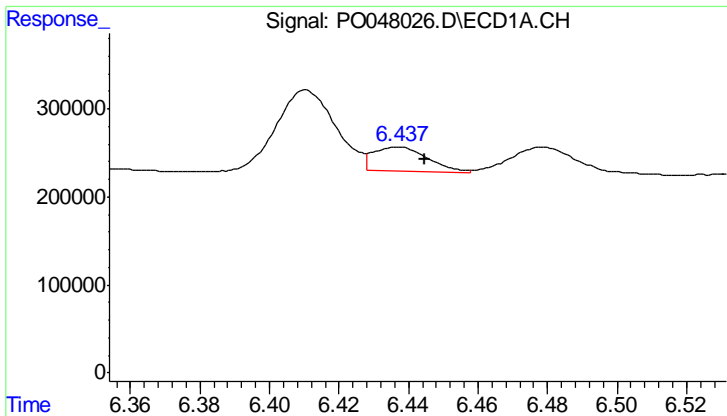
#22 AR-1248-2

R.T.: 6.176 min
 Delta R.T.: -0.006 min
 Response: 145194
 Conc: 26.65 ng/ml



#22 AR-1248-2

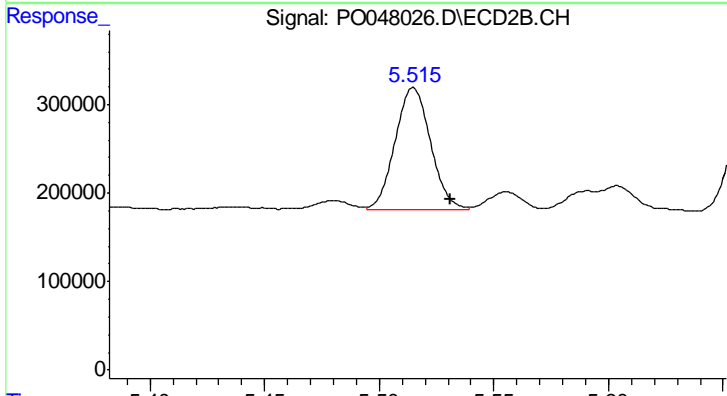
R.T.: 5.312 min
 Delta R.T.: -0.017 min
 Response: 177397
 Conc: 33.16 ng/ml



#23 AR-1248-3

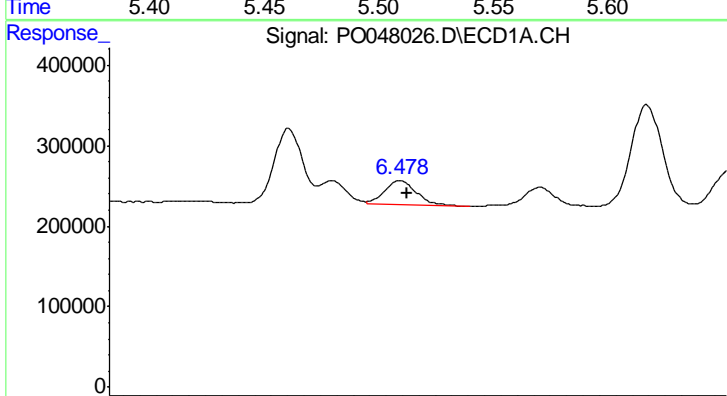
R.T.: 6.437 min
 Delta R.T.: -0.008 min
 Response: 298575
 Conc: 42.43 ng/ml

Instrument :
 ECD_O
 ClientSampled :



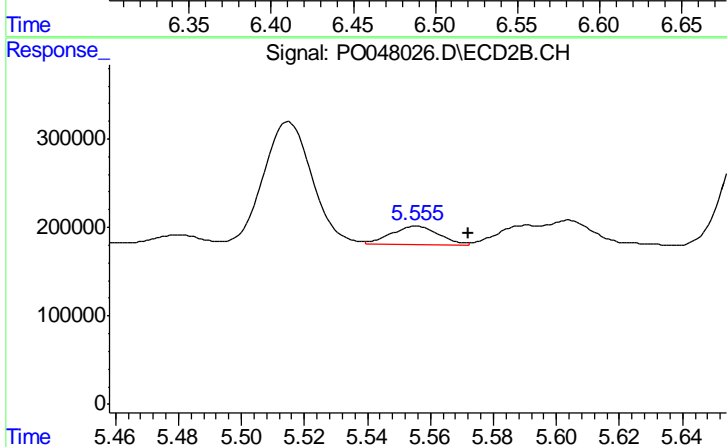
#23 AR-1248-3

R.T.: 5.515 min
 Delta R.T.: -0.016 min
 Response: 1492509
 Conc: 149.99 ng/ml



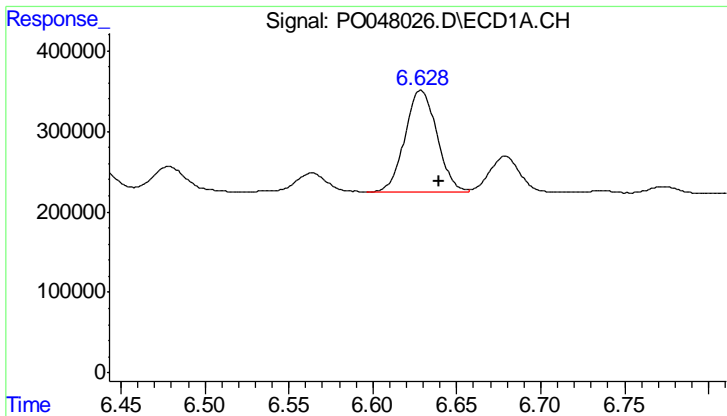
#24 AR-1248-4

R.T.: 6.479 min
 Delta R.T.: -0.004 min
 Response: 391011
 Conc: 58.24 ng/ml



#24 AR-1248-4

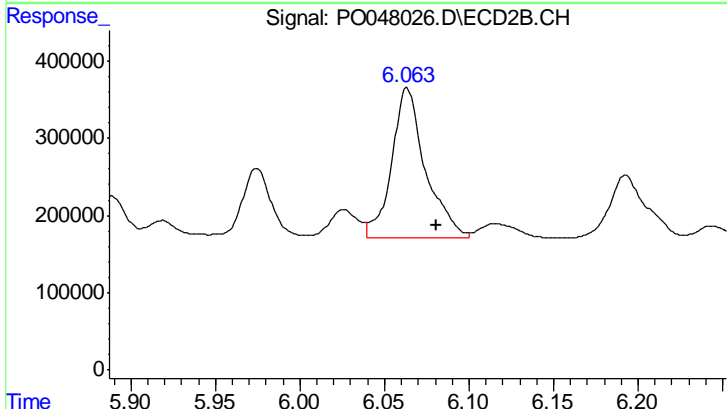
R.T.: 5.556 min
 Delta R.T.: -0.017 min
 Response: 222299
 Conc: 31.72 ng/ml



#25 AR-1248-5

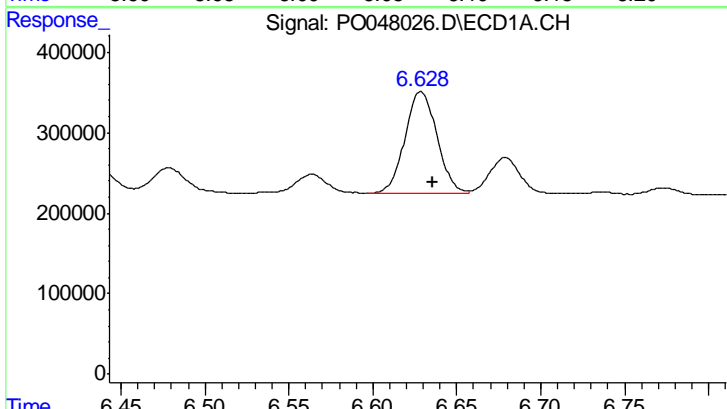
R.T.: 6.629 min
 Delta R.T.: -0.011 min
 Response: 1680384
 Conc: 237.42 ng/ml

Instrument :
 ECD_O
 ClientSampled :



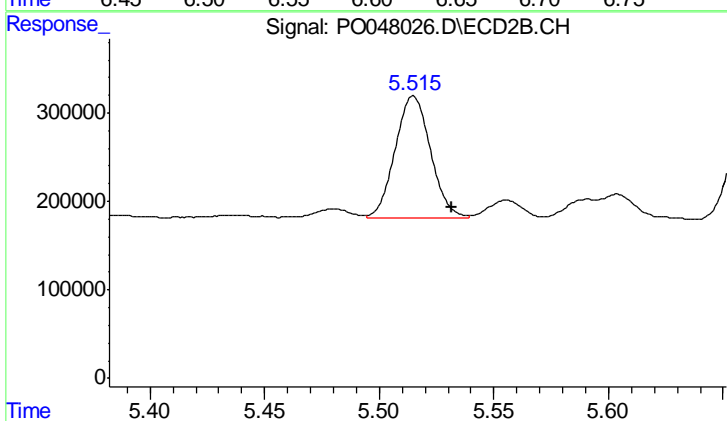
#25 AR-1248-5

R.T.: 6.063 min
 Delta R.T.: -0.018 min
 Response: 2703319
 Conc: 567.24 ng/ml



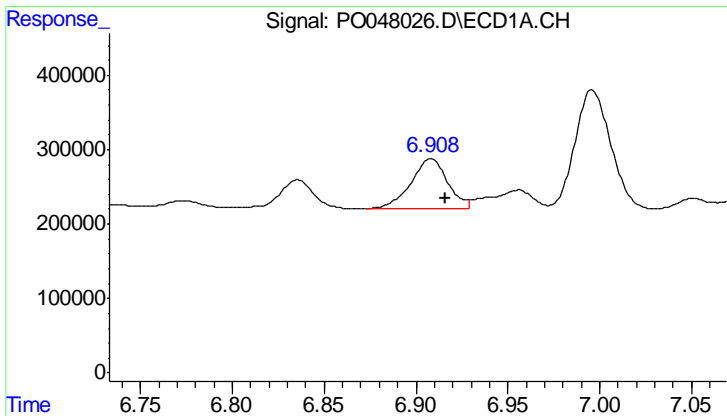
#26 AR-1254-1

R.T.: 6.629 min
 Delta R.T.: -0.007 min
 Response: 1680384
 Conc: 137.41 ng/ml



#26 AR-1254-1

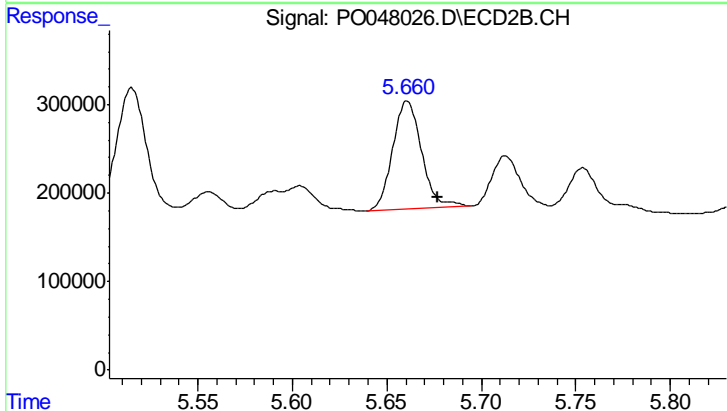
R.T.: 5.515 min
 Delta R.T.: -0.016 min
 Response: 1492509
 Conc: 121.29 ng/ml



#27 AR-1254-2

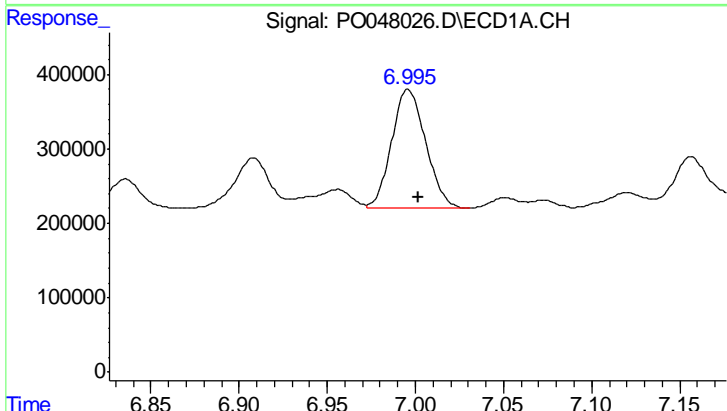
R.T.: 6.908 min
 Delta R.T.: -0.008 min
 Response: 938690
 Conc: 125.87 ng/ml

Instrument :
 ECD_O
 ClientSampled :



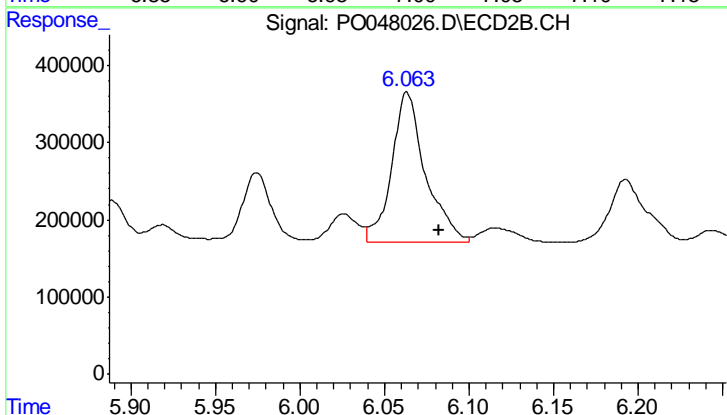
#27 AR-1254-2

R.T.: 5.661 min
 Delta R.T.: -0.016 min
 Response: 1309263
 Conc: 125.77 ng/ml



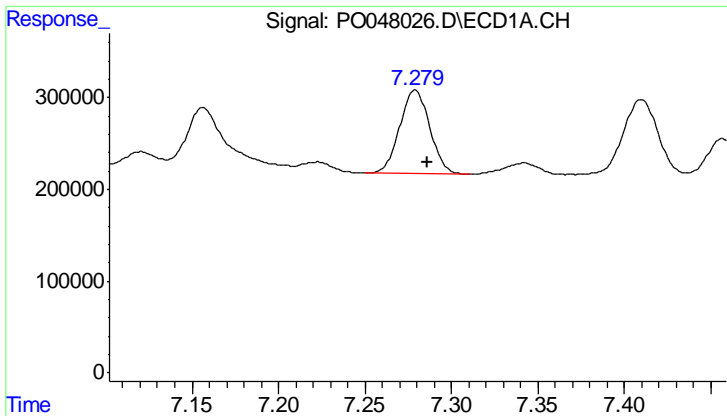
#28 AR-1254-3

R.T.: 6.996 min
 Delta R.T.: -0.006 min
 Response: 2143997
 Conc: 164.40 ng/ml



#28 AR-1254-3

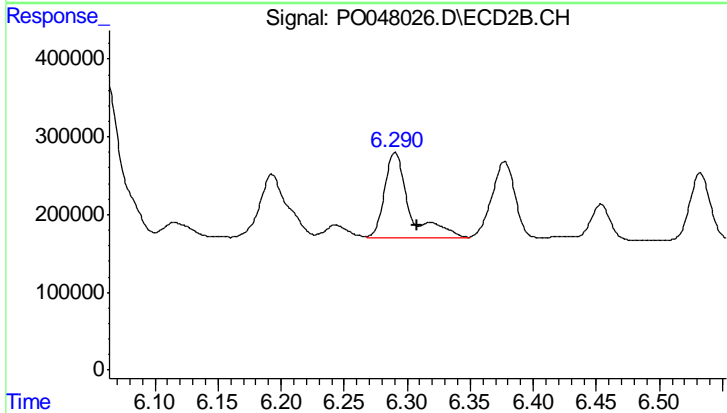
R.T.: 6.063 min
 Delta R.T.: -0.018 min
 Response: 2703319
 Conc: 155.76 ng/ml



#29 AR-1254-4

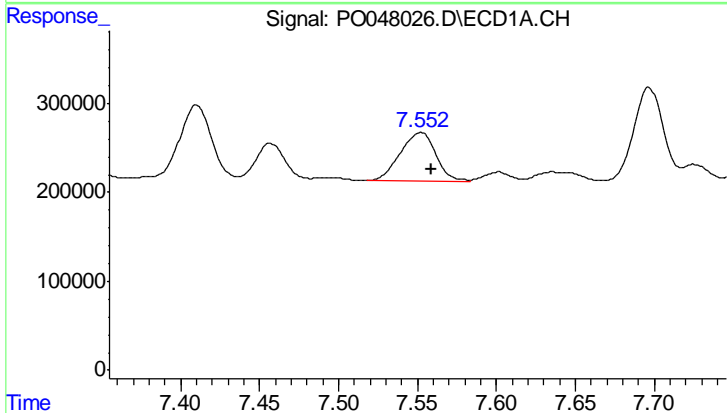
R.T.: 7.279 min
 Delta R.T.: -0.007 min
 Response: 1110061
 Conc: 113.89 ng/ml

Instrument :
 ECD_O
 ClientSampled :



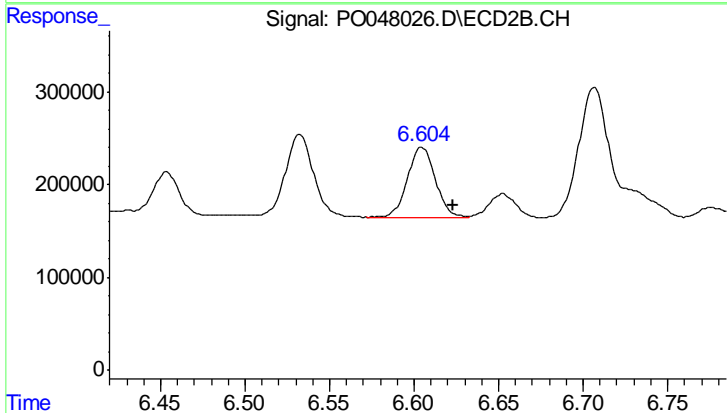
#29 AR-1254-4

R.T.: 6.290 min
 Delta R.T.: -0.018 min
 Response: 1489072
 Conc: 137.43 ng/ml



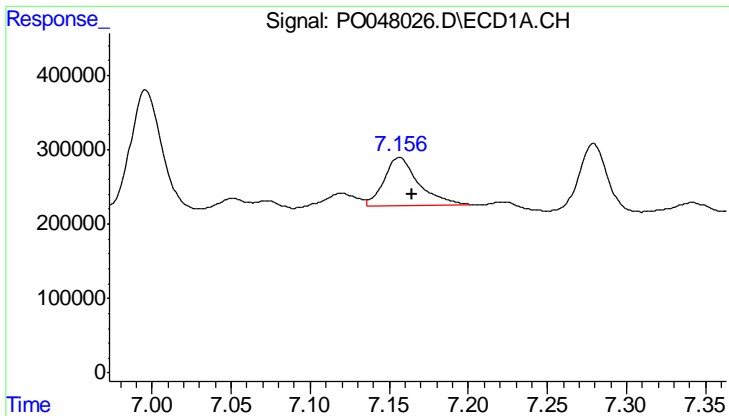
#30 AR-1254-5

R.T.: 7.552 min
 Delta R.T.: -0.007 min
 Response: 842955
 Conc: 114.10 ng/ml



#30 AR-1254-5

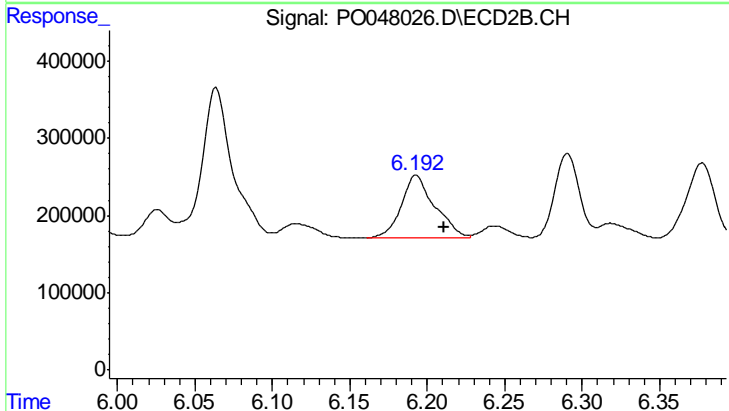
R.T.: 6.605 min
 Delta R.T.: -0.019 min
 Response: 877459
 Conc: 114.74 ng/ml



#31 AR-1260-1

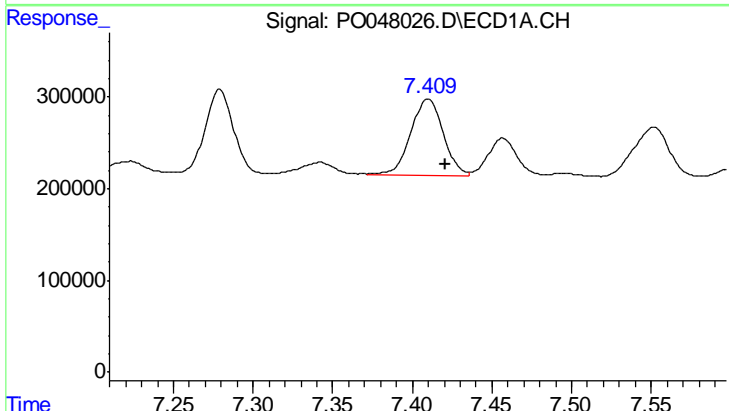
R.T.: 7.156 min
 Delta R.T.: -0.008 min
 Response: 980689
 Conc: 104.58 ng/ml

Instrument :
 ECD_O
 ClientSampled :



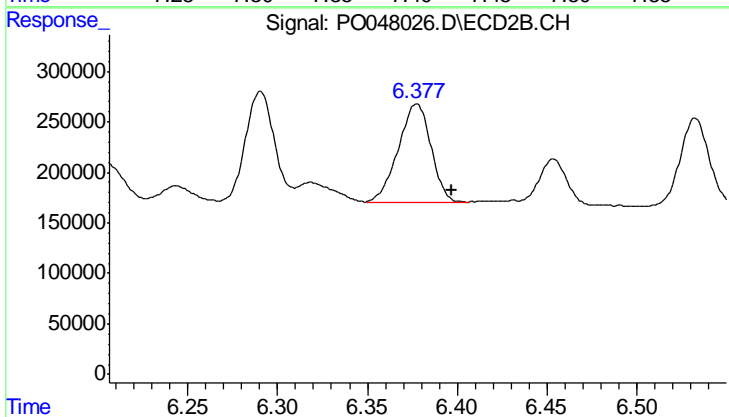
#31 AR-1260-1

R.T.: 6.193 min
 Delta R.T.: -0.018 min
 Response: 1241663
 Conc: 112.37 ng/ml



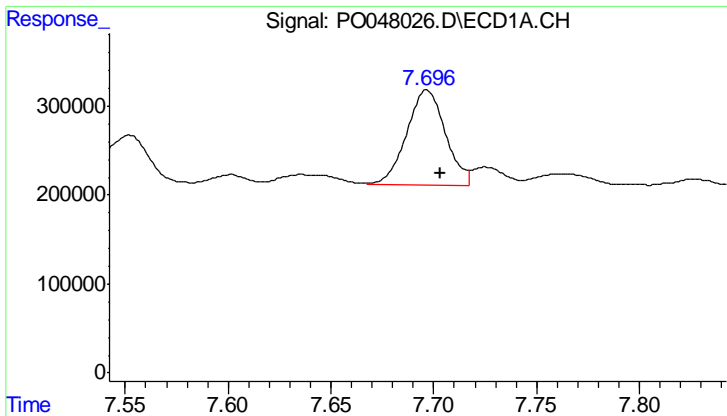
#32 AR-1260-2

R.T.: 7.410 min
 Delta R.T.: -0.011 min
 Response: 1179884
 Conc: 105.81 ng/ml



#32 AR-1260-2

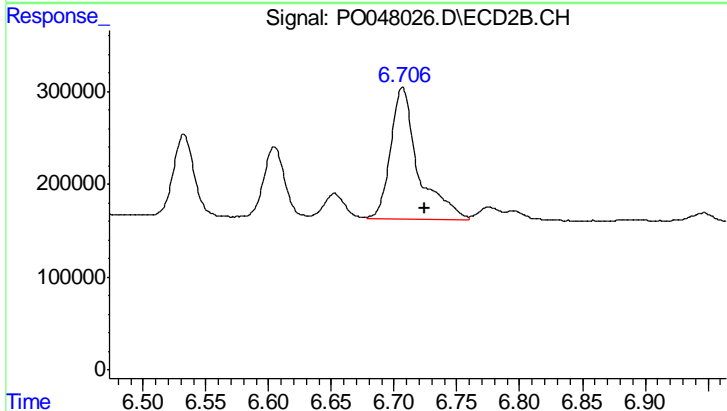
R.T.: 6.377 min
 Delta R.T.: -0.020 min
 Response: 1222480
 Conc: 91.18 ng/ml



#33 AR-1260-3

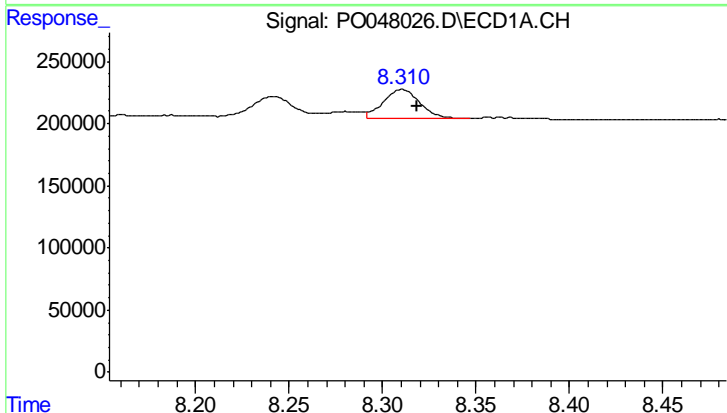
R.T.: 7.697 min
 Delta R.T.: -0.007 min
 Response: 1402432
 Conc: 109.00 ng/ml

Instrument :
 ECD_O
 ClientSampled :



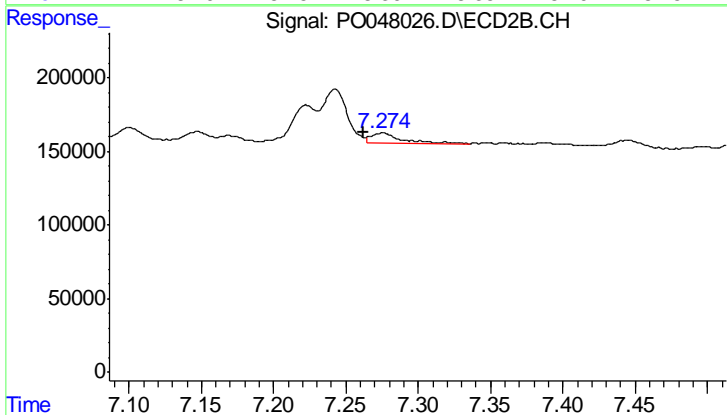
#33 AR-1260-3

R.T.: 6.707 min
 Delta R.T.: -0.018 min
 Response: 2162064
 Conc: 148.72 ng/ml



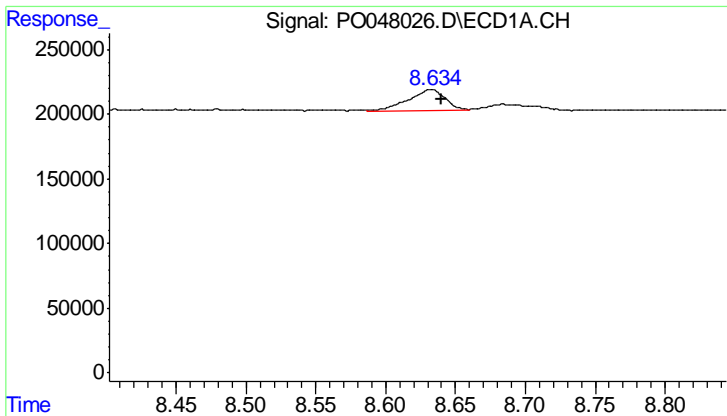
#34 AR-1260-4

R.T.: 8.310 min
 Delta R.T.: -0.008 min
 Response: 318903
 Conc: 17.93 ng/ml



#34 AR-1260-4

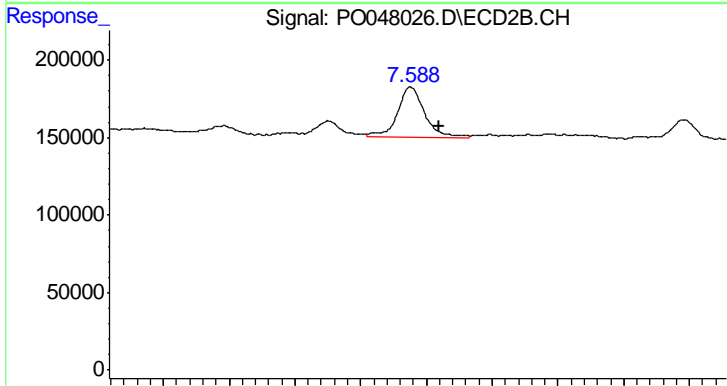
R.T.: 7.275 min
 Delta R.T.: 0.013 min
 Response: 99745
 Conc: 4.53 ng/ml



#35 AR-1260-5

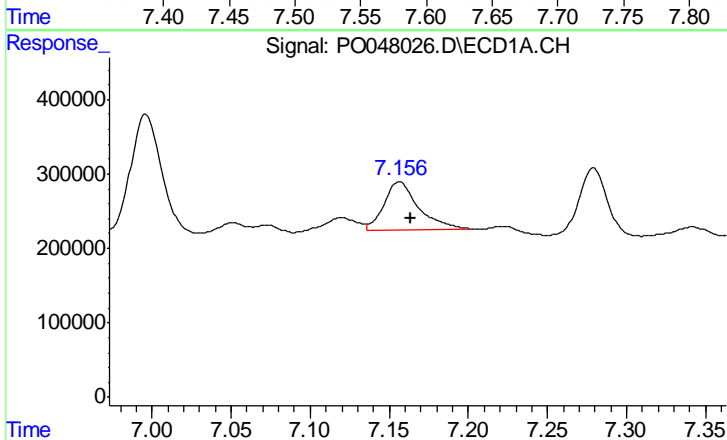
R.T.: 8.633 min
 Delta R.T.: -0.007 min
 Response: 301854
 Conc: 26.43 ng/ml

Instrument :
 ECD_O
 ClientSampled :



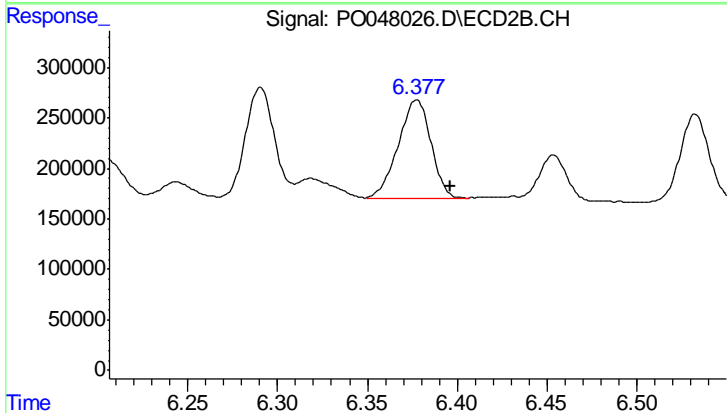
#35 AR-1260-5

R.T.: 7.588 min
 Delta R.T.: -0.021 min
 Response: 462050
 Conc: 29.62 ng/ml



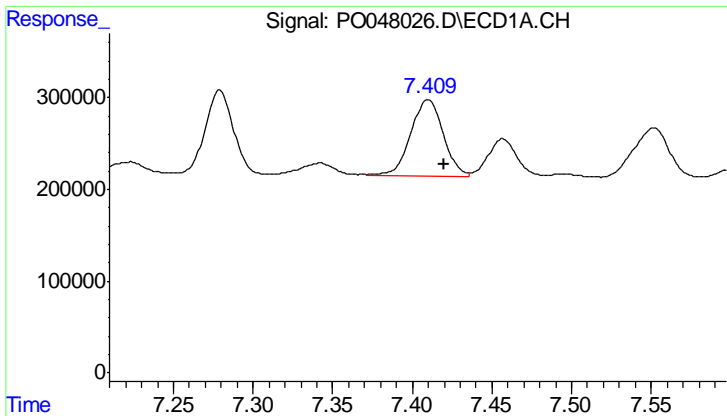
#36 AR-1262-1

R.T.: 7.156 min
 Delta R.T.: -0.008 min
 Response: 980689
 Conc: 118.38 ng/ml



#36 AR-1262-1

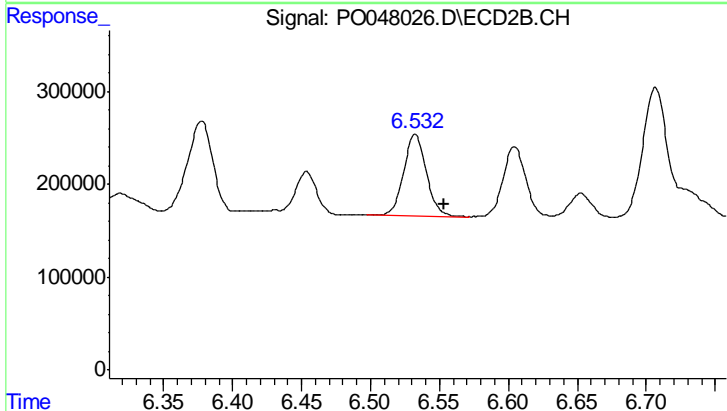
R.T.: 6.377 min
 Delta R.T.: -0.019 min
 Response: 1222480
 Conc: 107.82 ng/ml



#37 AR-1262-2

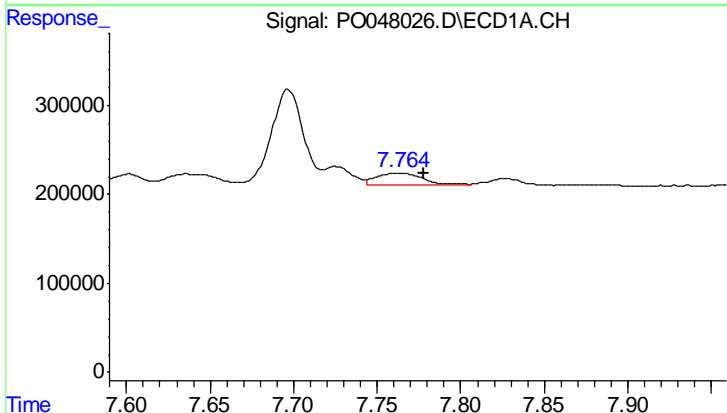
R.T.: 7.410 min
 Delta R.T.: -0.010 min
 Response: 1179884
 Conc: 121.74 ng/ml

Instrument :
 ECD_O
 ClientSampled :



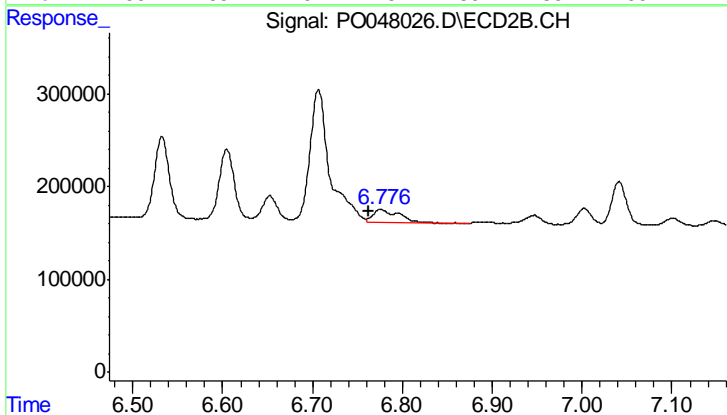
#37 AR-1262-2

R.T.: 6.532 min
 Delta R.T.: -0.021 min
 Response: 1008237
 Conc: 89.35 ng/ml



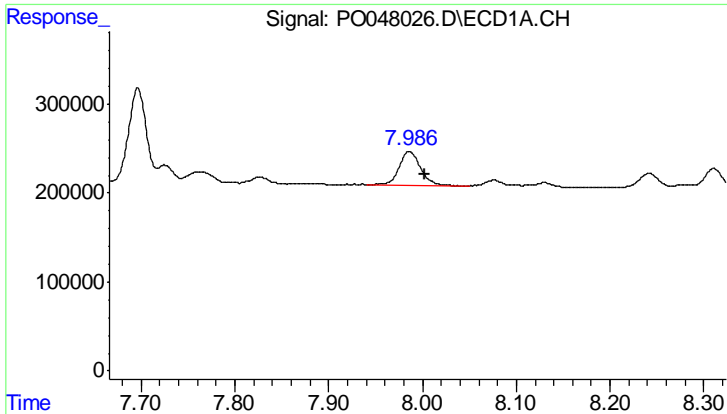
#38 AR-1262-3

R.T.: 7.763 min
 Delta R.T.: -0.015 min
 Response: 250146
 Conc: 20.38 ng/ml



#38 AR-1262-3

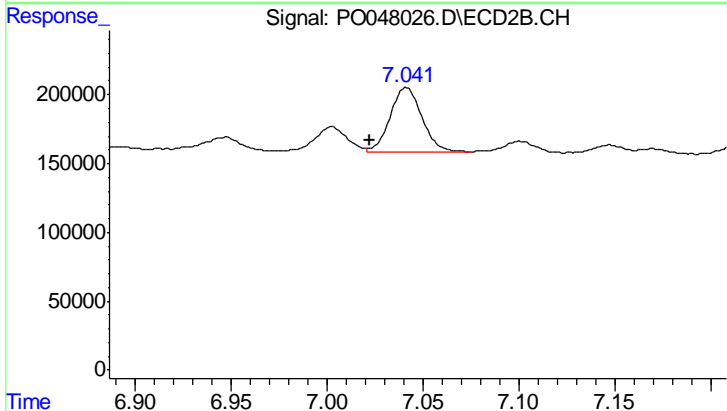
R.T.: 6.776 min
 Delta R.T.: 0.013 min
 Response: 263220
 Conc: 17.44 ng/ml



#39 AR-1262-4

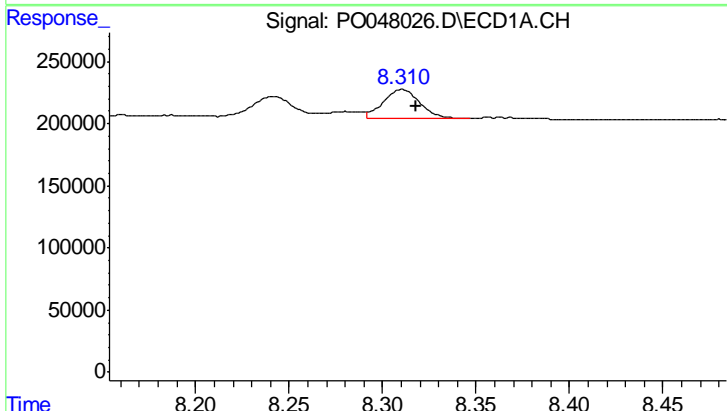
R.T.: 7.986 min
 Delta R.T.: -0.017 min
 Response: 615194
 Conc: 52.24 ng/ml

Instrument :
 ECD_O
 ClientSampled :



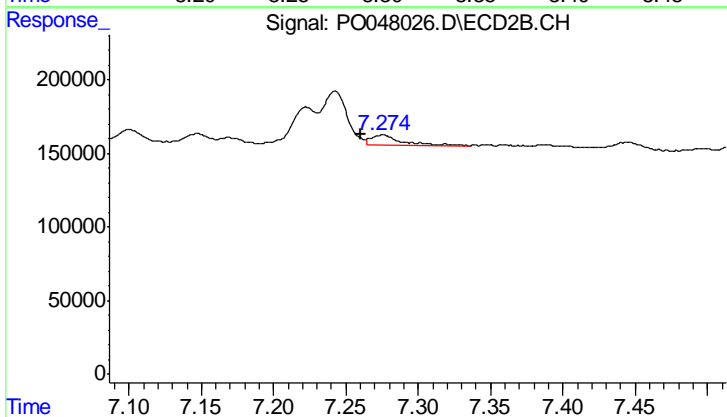
#39 AR-1262-4

R.T.: 7.041 min
 Delta R.T.: 0.019 min
 Response: 537547
 Conc: 40.82 ng/ml



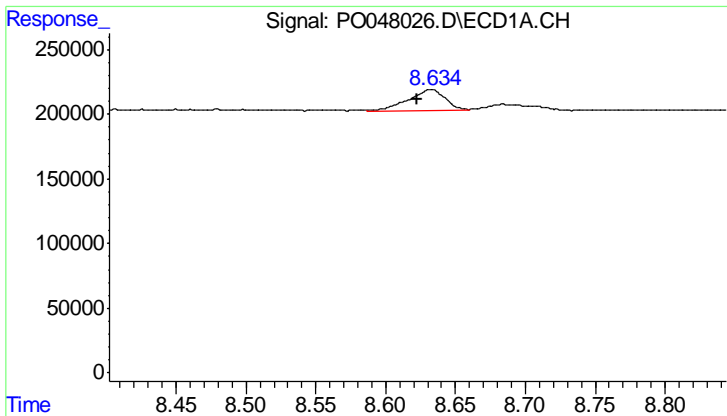
#40 AR-1262-5

R.T.: 8.310 min
 Delta R.T.: -0.008 min
 Response: 318903
 Conc: 14.84 ng/ml



#40 AR-1262-5

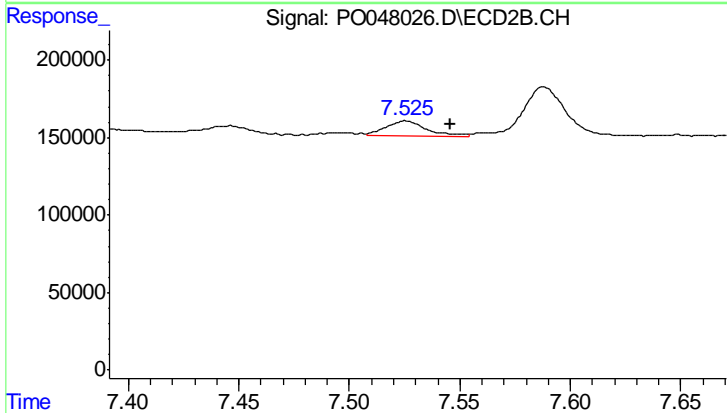
R.T.: 7.275 min
 Delta R.T.: 0.015 min
 Response: 99745
 Conc: 3.86 ng/ml



#41 AR-1268-1

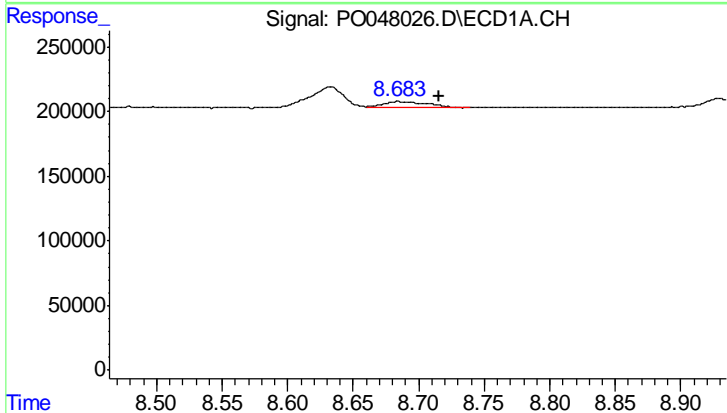
R.T.: 8.633 min
 Delta R.T.: 0.010 min
 Response: 301854
 Conc: 13.01 ng/ml

Instrument :
 ECD_O
 ClientSampleId :



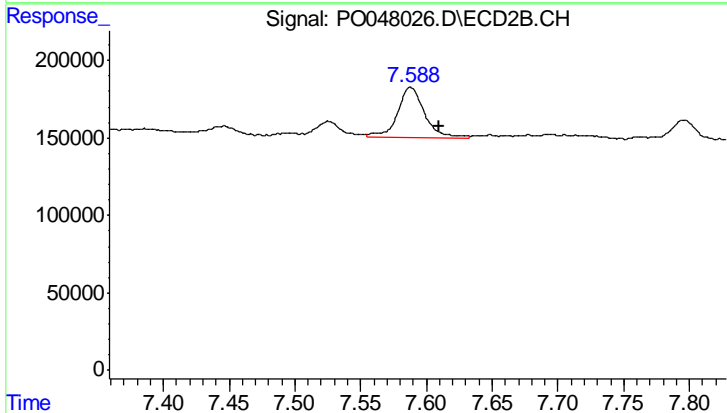
#41 AR-1268-1

R.T.: 7.526 min
 Delta R.T.: -0.020 min
 Response: 128164
 Conc: 4.93 ng/ml



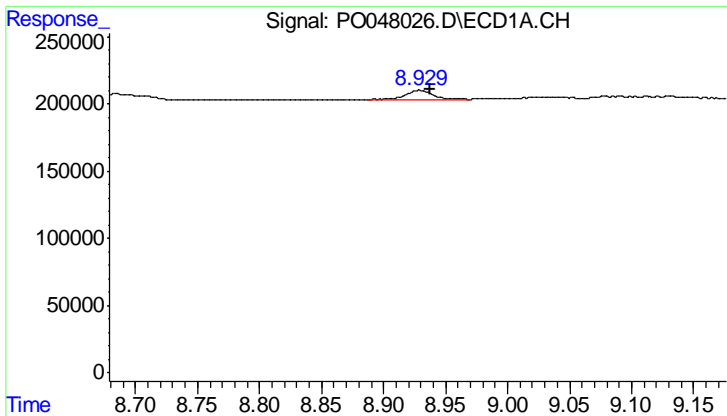
#42 AR-1268-2

R.T.: 8.684 min
 Delta R.T.: -0.032 min
 Response: 121141
 Conc: 5.65 ng/ml



#42 AR-1268-2

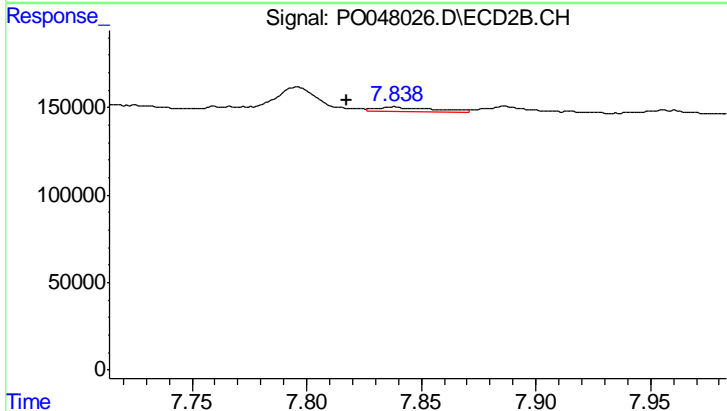
R.T.: 7.588 min
 Delta R.T.: -0.021 min
 Response: 462050
 Conc: 18.55 ng/ml



#43 AR-1268-3

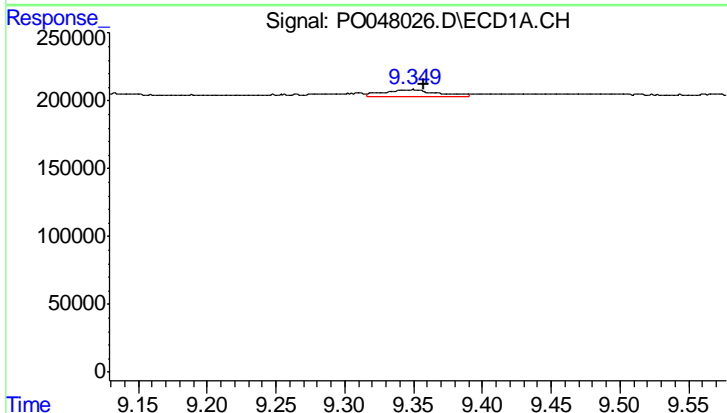
R.T.: 8.929 min
 Delta R.T.: -0.009 min
 Response: 120930
 Conc: 6.70 ng/ml

Instrument :
 ECD_O
 ClientSampled :



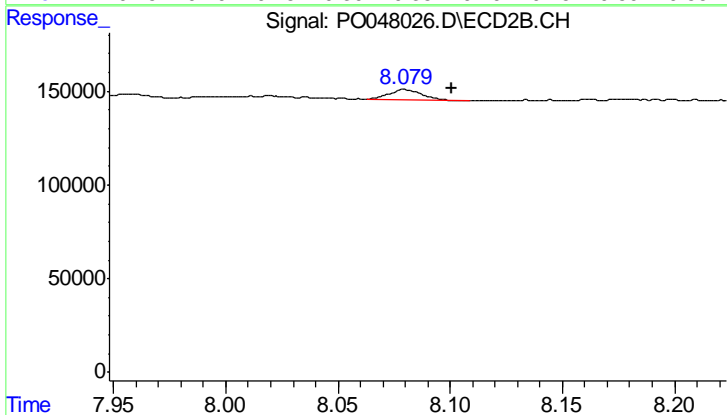
#43 AR-1268-3

R.T.: 7.839 min
 Delta R.T.: 0.021 min
 Response: 47049
 Conc: 2.38 ng/ml



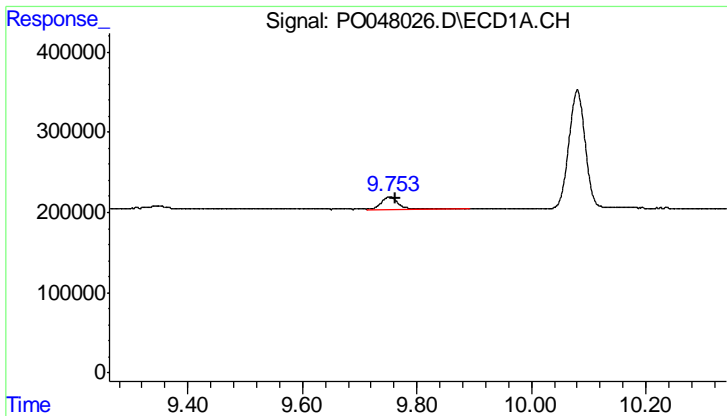
#44 AR-1268-4

R.T.: 9.349 min
 Delta R.T.: -0.009 min
 Response: 130395
 Conc: 16.35 ng/ml



#44 AR-1268-4

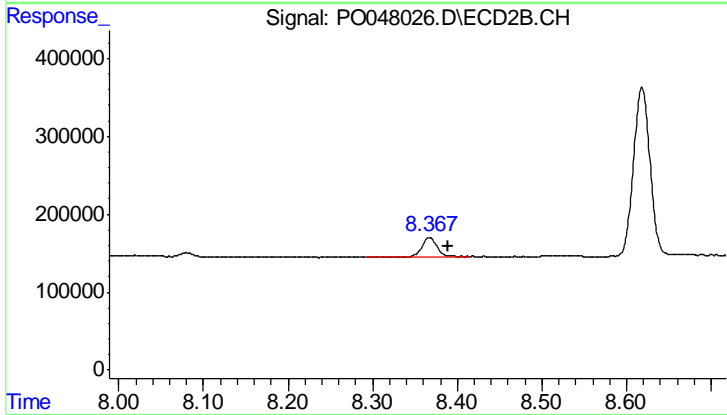
R.T.: 8.080 min
 Delta R.T.: -0.020 min
 Response: 61714
 Conc: 7.36 ng/ml



#45 AR-1268-5

R.T.: 9.752 min
Delta R.T.: -0.010 min
Response: 368505
Conc: 6.76 ng/ml

Instrument :
ECD_O
ClientSampleId :



#45 AR-1268-5

R.T.: 8.367 min
Delta R.T.: -0.022 min
Response: 353256
Conc: 6.47 ng/ml