

Data Path : Z:\pestpcbsrv\HPCHEM1\ECD\_0\Data\P0081919\  
 Data File : P0059494.D  
 Signal(s) : Signal #1: ECD1A.CH Signal #2: ECD2B.CH  
 Acq On : 20 Aug 2019 2:47  
 Operator : SM/AJ  
 Sample : I.BLK  
 Misc :  
 ALS Vial : 2 Sample Multiplier: 1

**Instrument :**  
 ECD\_0  
**ClientSampled :**  
 I.BLK

**Manual Integrations**  
**APPROVED**  
 Ankita  
 8/21/2019 12:59:02 PM

Integration File signal 1: autoint1.e  
 Integration File signal 2: autoint2.e  
 Quant Time: Aug 20 05:27:47 2019  
 Quant Method : Z:\pestpcbsrv\HPCHEM1\ECD\_0\methods\P0081719.M  
 Quant Title : GC EXTRACTABLES  
 QLast Update : Sat Aug 17 03:09:44 2019  
 Response via : Initial Calibration  
 Integrator: ChemStation 6890 Scale Mode: Small noise peaks clipped

Volume Inj. : 2 µl  
 Signal #1 Phase : ZB-MR1 Signal #2 Phase: ZB-MR2  
 Signal #1 Info : 30Mx0.32mmx 0.50µ Signal #2 Info : 30M x 0.32mm x 0.25µm

Compound	RT#1	RT#2	Resp#1	Resp#2	ng/ml	ng/ml
-----						
System Monitoring Compounds						
1) SA Tetrachlo...	4.136	3.504	671068	668353	19.166	18.568
2) SA Decachlor...	9.622	8.372	715479	538221	13.449	13.348m

Target Compounds

(f)=RT Delta > 1/2 Window (#)=Amounts differ by > 25% (m)=manual int.

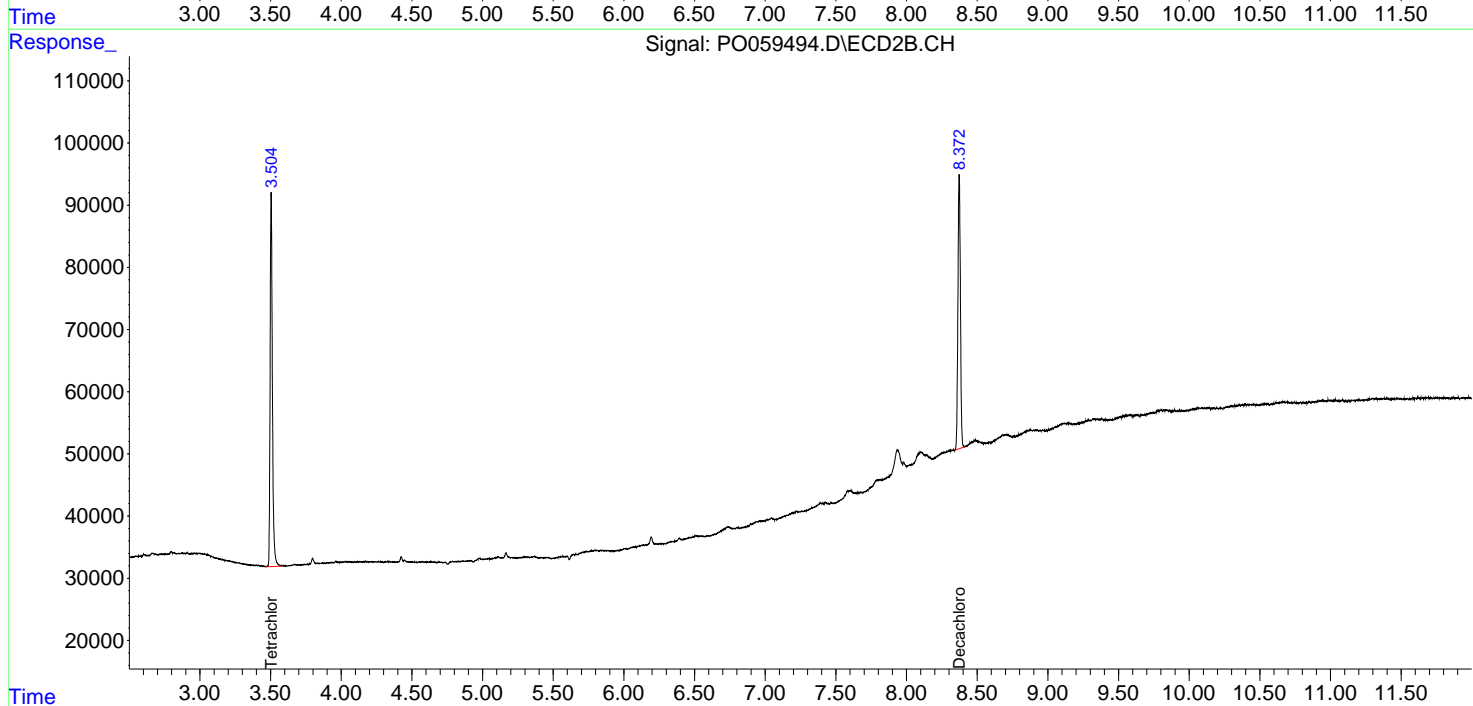
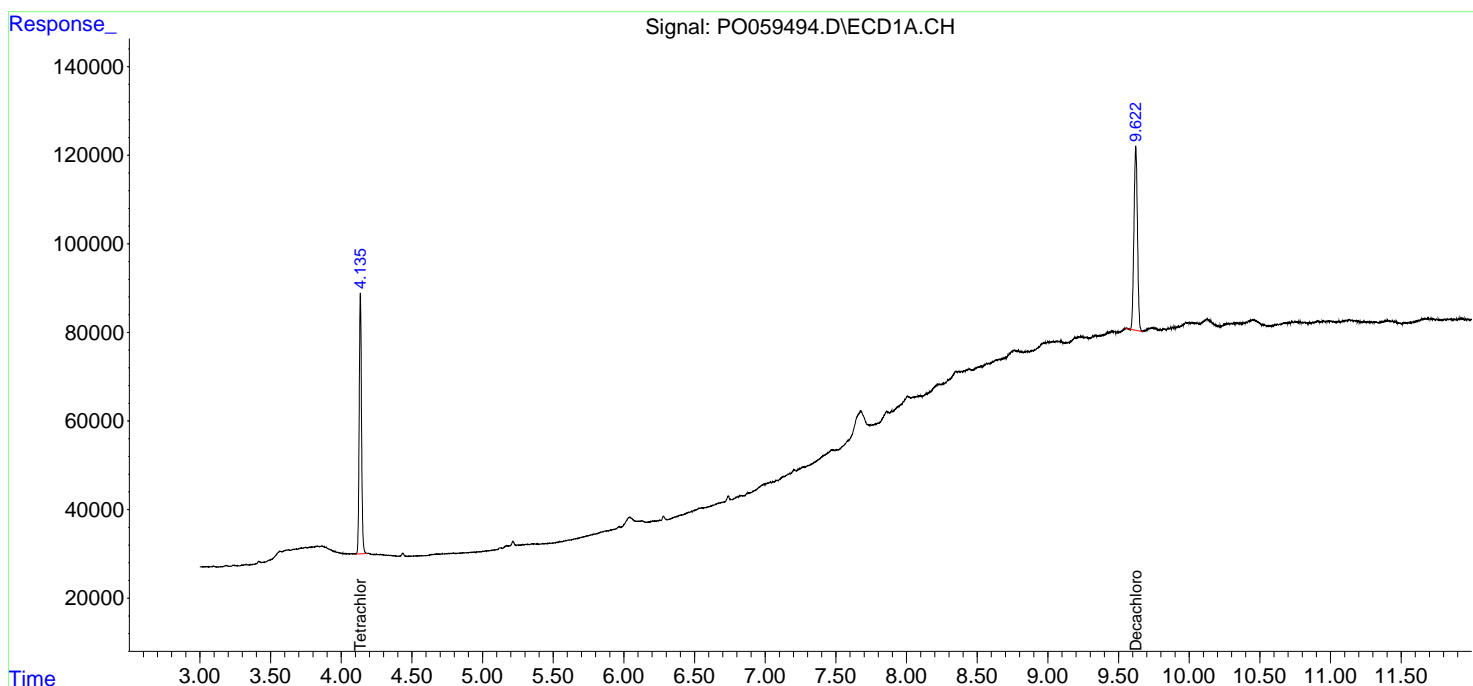
Data Path : Z:\pestpcbsrv\HPCHEM1\ECD\_0\Data\PO081919\  
 Data File : PO059494.D  
 Signal(s) : Signal #1: ECD1A.CH Signal #2: ECD2B.CH  
 Acq On : 20 Aug 2019 2:47  
 Operator : SM/AJ  
 Sample : I.BLK  
 Misc :  
 ALS Vial : 2 Sample Multiplier: 1

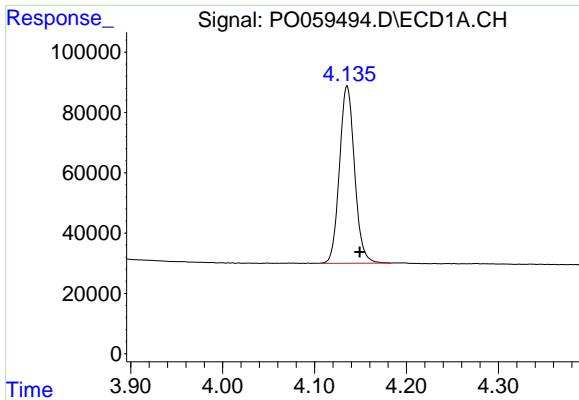
**Instrument :**  
 ECD\_O  
**ClientSampled :**  
 I.BLK

**Manual Integrations**  
**APPROVED**  
 Ankita  
 8/21/2019 12:59:02 PM

Integration File signal 1: autoint1.e  
 Integration File signal 2: autoint2.e  
 Quant Time: Aug 20 05:27:47 2019  
 Quant Method : Z:\pestpcbsrv\HPCHEM1\ECD\_0\methods\PO081719.M  
 Quant Title : GC EXTRACTABLES  
 QLast Update : Sat Aug 17 03:09:44 2019  
 Response via : Initial Calibration  
 Integrator: ChemStation 6890 Scale Mode: Small noise peaks clipped

Volume Inj. : 2 µl  
 Signal #1 Phase : ZB-MR1 Signal #2 Phase: ZB-MR2  
 Signal #1 Info : 30Mx0.32mmx 0.50µ Signal #2 Info : 30M x 0.32mm x 0.25µm

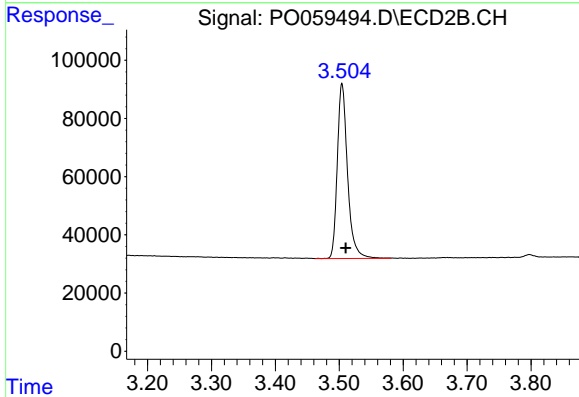




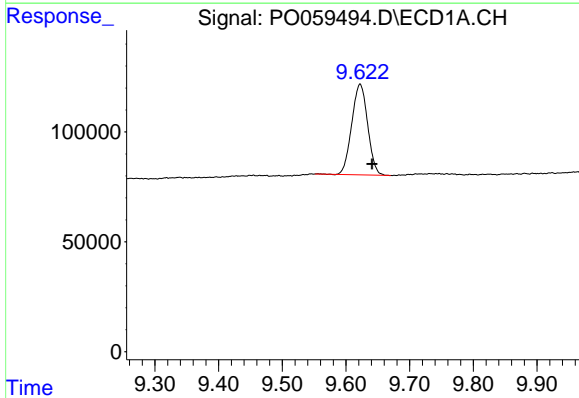
#1 Tetrachloro-m-xylene  
 R.T.: 4.136 min  
 Delta R.T.: -0.013 min  
 Response: 671068  
 Conc: 19.17 ng/ml

Instrument :  
 ECD\_O  
 ClientSampled :  
 I.BLK

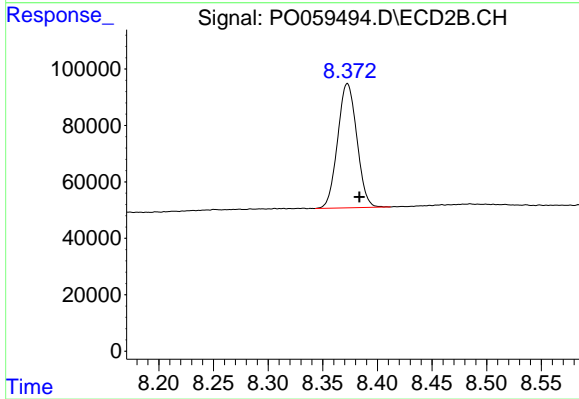
Manual Integrations  
 APPROVED  
 Ankita  
 8/21/2019 12:59:02 PM



#1 Tetrachloro-m-xylene  
 R.T.: 3.504 min  
 Delta R.T.: -0.006 min  
 Response: 668353  
 Conc: 18.57 ng/ml



#2 Decachlorobiphenyl  
 R.T.: 9.622 min  
 Delta R.T.: -0.019 min  
 Response: 715479  
 Conc: 13.45 ng/ml



#2 Decachlorobiphenyl  
 R.T.: 8.372 min  
 Delta R.T.: -0.011 min  
 Response: 538221  
 Conc: 13.35 ng/ml m