

Data Path : Z:\pestpcbsrv\HPCHEM1\ECD_0\Data\P0082019\
 Data File : P0059528.D
 Signal(s) : Signal #1: ECD1A.CH Signal #2: ECD2B.CH
 Acq On : 20 Aug 2019 14:41
 Operator : SM/AJ
 Sample : K4403-13
 Misc :
 ALS Vial : 14 Sample Multiplier: 1

Instrument :
 ECD_0
ClientSampleId :
 T1-I-(0-2.5)

Manual Integrations
APPROVED
 Ankita
 8/21/2019 1:12:20 PM

Integration File signal 1: autoint1.e
 Integration File signal 2: autoint2.e
 Quant Time: Aug 20 16:21:26 2019
 Quant Method : Z:\pestpcbsrv\HPCHEM1\ECD_0\methods\P0081719.M
 Quant Title : GC EXTRACTABLES
 QLast Update : Sat Aug 17 03:09:44 2019
 Response via : Initial Calibration
 Integrator: ChemStation 6890 Scale Mode: Small noise peaks clipped

Volume Inj. : 2 µl
 Signal #1 Phase : ZB-MR1 Signal #2 Phase: ZB-MR2
 Signal #1 Info : 30Mx0.32mmx 0.50µ Signal #2 Info : 30M x 0.32mm x 0.25µm

Compound	RT#1	RT#2	Resp#1	Resp#2	ng/ml	ng/ml

System Monitoring Compounds						
1) SA Tetrachlo...	4.139	3.504	1077817	1001055	30.784	27.810
2) SA Decachlor...	9.622	8.373	923904	717322	17.367	17.790m
Target Compounds						
31) L7 AR-1260-1	6.868	6.005	594732	428932	220.613	188.218
32) L7 AR-1260-2	7.124	6.193	645509	461875	173.969	157.643
33) L7 AR-1260-3	7.479	6.341	1044407	394948	318.773	149.086 #
34) L7 AR-1260-4	7.705	6.805	964468	662691	314.024m	292.892
35) L7 AR-1260-5	8.012	7.048	2081120	1523704	293.906m	276.870

(f)=RT Delta > 1/2 Window (#)=Amounts differ by > 25% (m)=manual int.

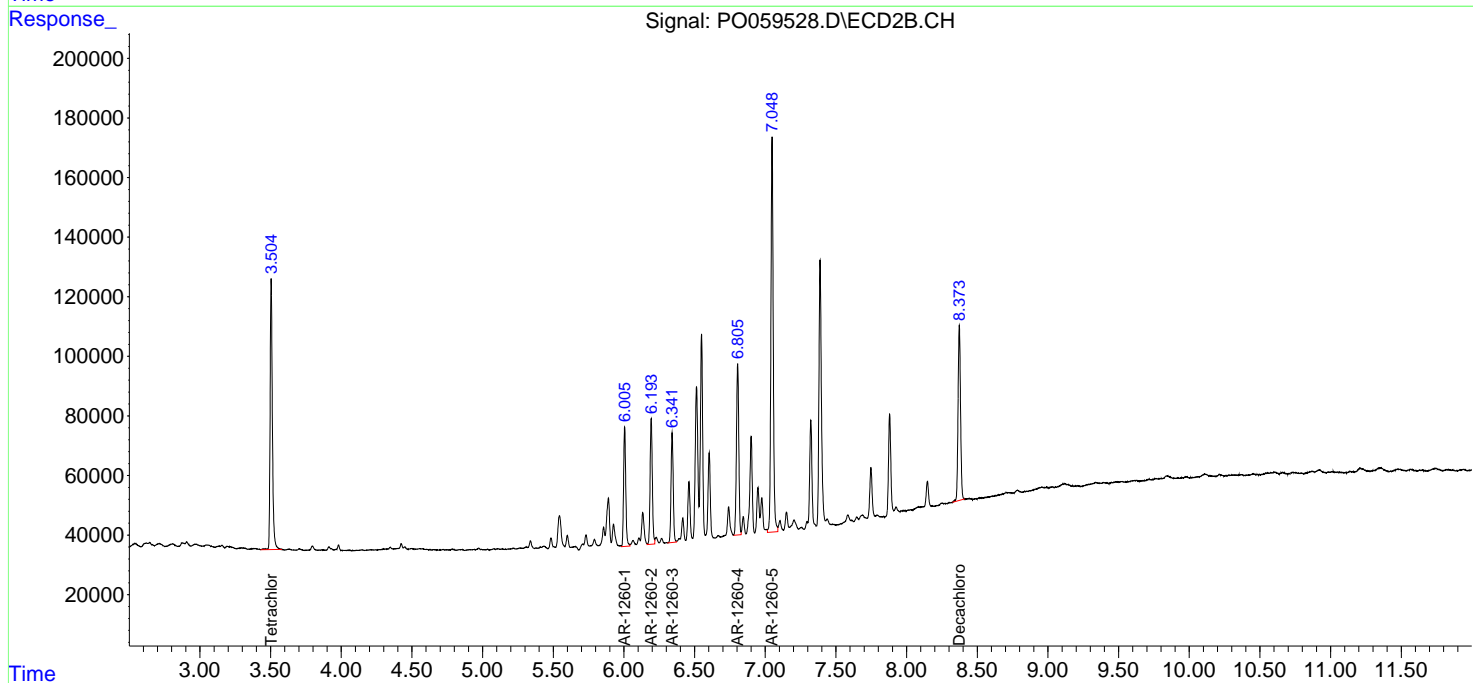
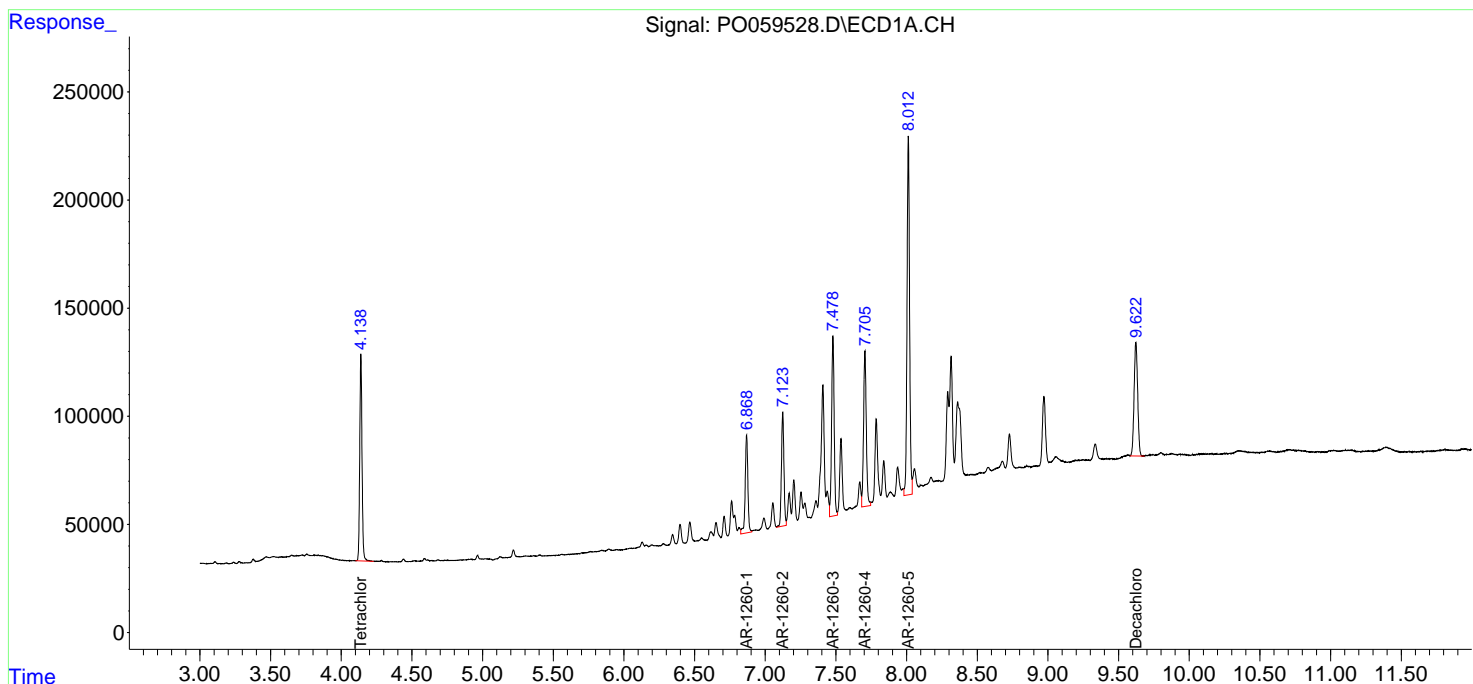
Data Path : Z:\pestpcbsrv\HPCHEM1\ECD_0\Data\P0082019\
 Data File : P0059528.D
 Signal(s) : Signal #1: ECD1A.CH Signal #2: ECD2B.CH
 Acq On : 20 Aug 2019 14:41
 Operator : SM/AJ
 Sample : K4403-13
 Misc :
 ALS Vial : 14 Sample Multiplier: 1

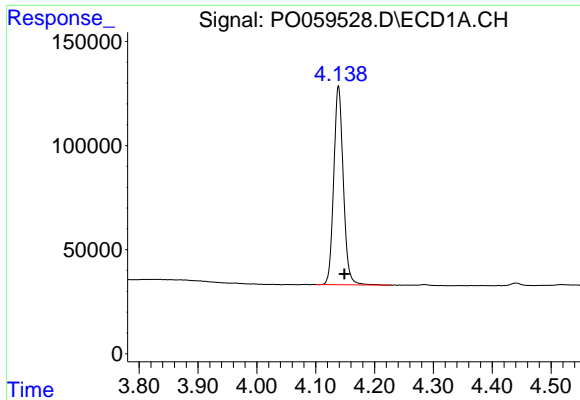
Instrument :
 ECD_O
Client Sampled :
 T1-I-(0-2.5)

Manual Integrations
APPROVED
 Ankita
 8/21/2019 1:12:20 PM

Integration File signal 1: autoint1.e
 Integration File signal 2: autoint2.e
 Quant Time: Aug 20 16:21:26 2019
 Quant Method : Z:\pestpcbsrv\HPCHEM1\ECD_0\methods\P0081719.M
 Quant Title : GC EXTRACTABLES
 QLast Update : Sat Aug 17 03:09:44 2019
 Response via : Initial Calibration
 Integrator: ChemStation 6890 Scale Mode: Small noise peaks clipped

Volume Inj. : 2 µl
 Signal #1 Phase : ZB-MR1 Signal #2 Phase: ZB-MR2
 Signal #1 Info : 30Mx0.32mmx 0.50µ Signal #2 Info : 30M x 0.32mm x 0.25µm

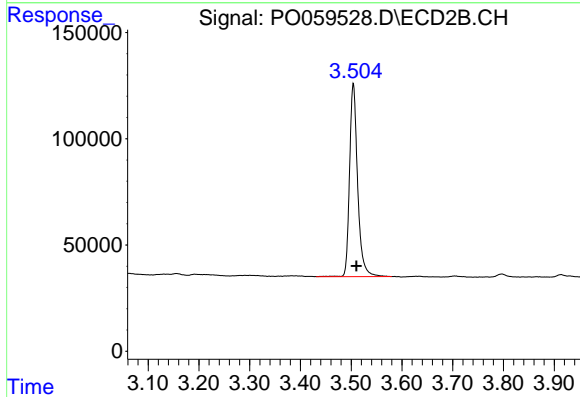




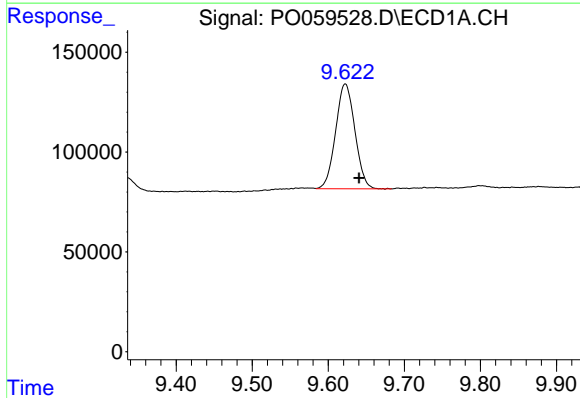
#1 Tetrachloro-m-xylene
 R.T.: 4.139 min
 Delta R.T.: -0.010 min
 Response: 1077817
 Conc: 30.78 ng/ml

Instrument :
 ECD_O
 ClientSampled :
 T1-I-(0-2.5)

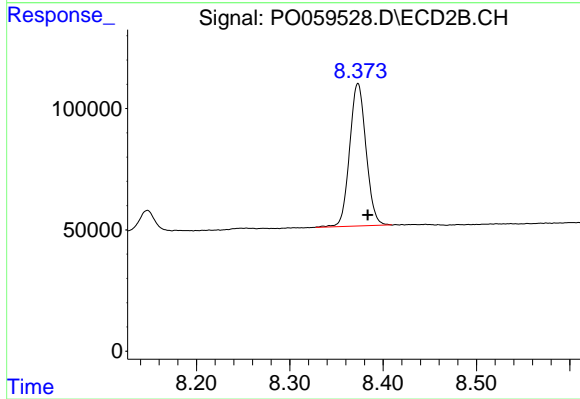
Manual Integrations
APPROVED
 Ankita
 8/21/2019 1:12:20 PM



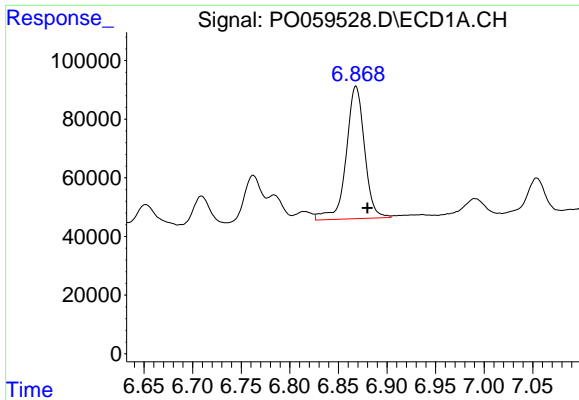
#1 Tetrachloro-m-xylene
 R.T.: 3.504 min
 Delta R.T.: -0.006 min
 Response: 1001055
 Conc: 27.81 ng/ml



#2 Decachlorobiphenyl
 R.T.: 9.622 min
 Delta R.T.: -0.018 min
 Response: 923904
 Conc: 17.37 ng/ml



#2 Decachlorobiphenyl
 R.T.: 8.373 min
 Delta R.T.: -0.011 min
 Response: 717322
 Conc: 17.79 ng/ml m

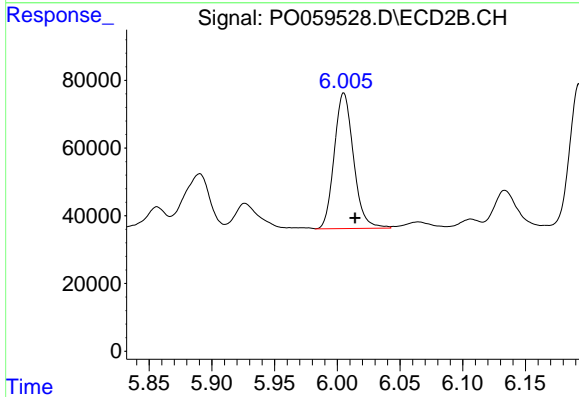


#31 AR-1260-1

R.T.: 6.868 min
 Delta R.T.: -0.012 min
 Response: 594732
 Conc: 220.61 ng/ml

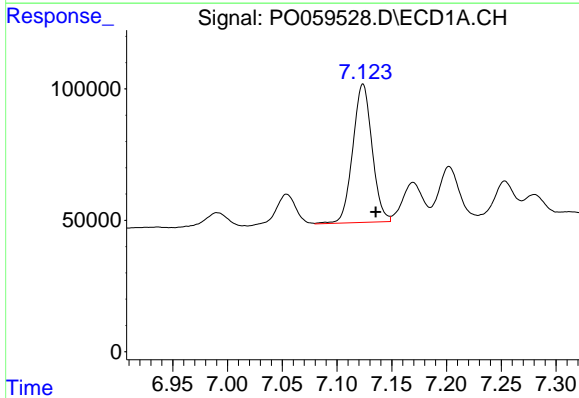
Instrument :
 ECD_O
 ClientSampled :
 T1-I-(0-2.5)

Manual Integrations
 APPROVED
 Ankita
 8/21/2019 1:12:20 PM



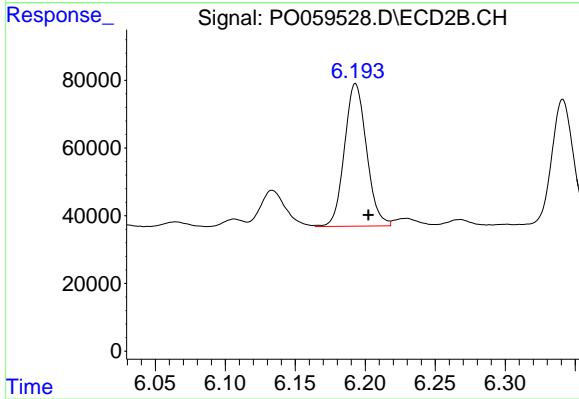
#31 AR-1260-1

R.T.: 6.005 min
 Delta R.T.: -0.009 min
 Response: 428932
 Conc: 188.22 ng/ml



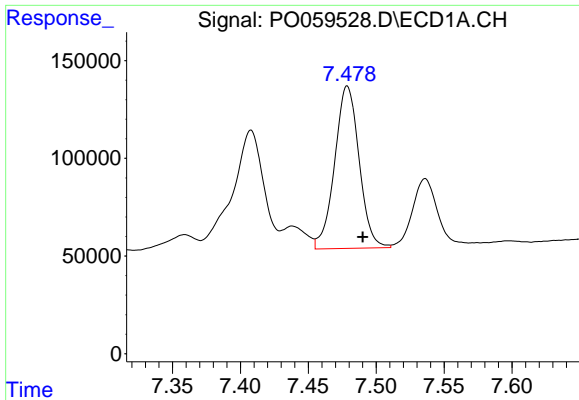
#32 AR-1260-2

R.T.: 7.124 min
 Delta R.T.: -0.012 min
 Response: 645509
 Conc: 173.97 ng/ml



#32 AR-1260-2

R.T.: 6.193 min
 Delta R.T.: -0.009 min
 Response: 461875
 Conc: 157.64 ng/ml



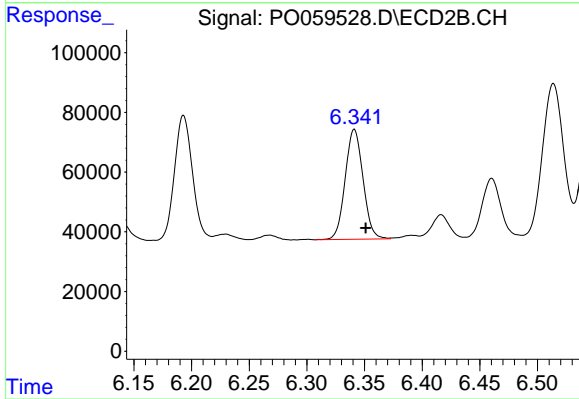
#33 AR-1260-3

R.T.: 7.479 min
 Delta R.T.: -0.011 min
 Response: 1044407
 Conc: 318.77 ng/ml

Instrument :
 ECD_O
 ClientSampled :
 T1-I-(0-2.5)

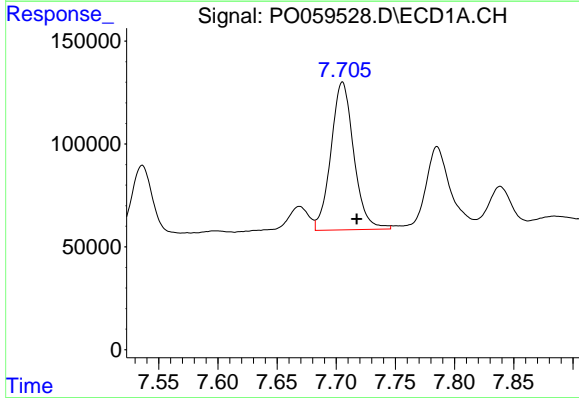
Manual Integrations
 APPROVED

Ankita
 8/21/2019 1:12:20 PM



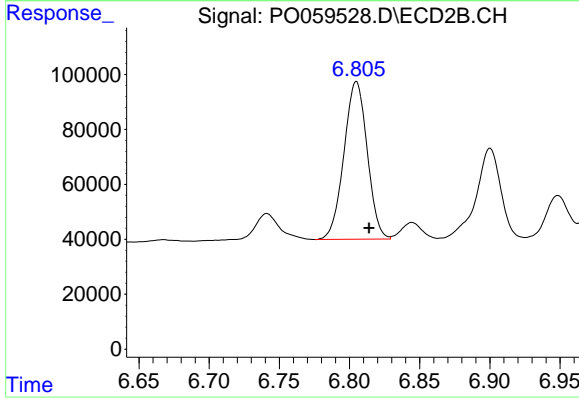
#33 AR-1260-3

R.T.: 6.341 min
 Delta R.T.: -0.010 min
 Response: 394948
 Conc: 149.09 ng/ml



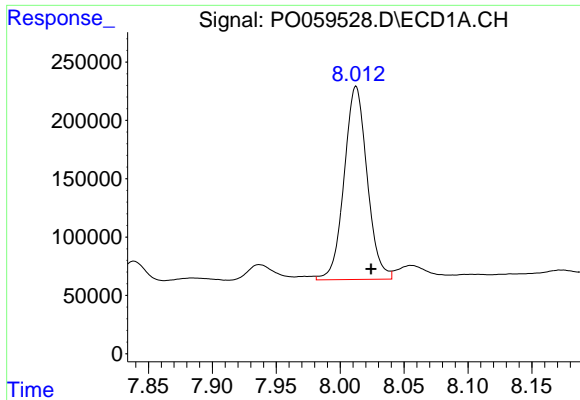
#34 AR-1260-4

R.T.: 7.705 min
 Delta R.T.: -0.012 min
 Response: 964468
 Conc: 314.02 ng/ml m



#34 AR-1260-4

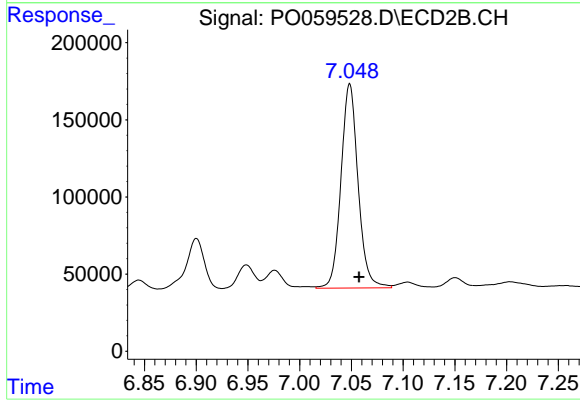
R.T.: 6.805 min
 Delta R.T.: -0.009 min
 Response: 662691
 Conc: 292.89 ng/ml



#35 AR-1260-5
 R.T.: 8.012 min
 Delta R.T.: -0.012 min
 Response: 2081120
 Conc: 293.91 ng/ml m

Instrument :
 ECD_O
ClientSampled :
 T1-I-(0-2.5)

Manual Integrations
APPROVED
 Ankita
 8/21/2019 1:12:20 PM



#35 AR-1260-5
 R.T.: 7.048 min
 Delta R.T.: -0.009 min
 Response: 1523704
 Conc: 276.87 ng/ml