

Data Path : Z:\pestpcbsrv\HPCHEM1\ECD\_0\Data\P0082019\  
 Data File : P0059540.D  
 Signal(s) : Signal #1: ECD1A.CH Signal #2: ECD2B.CH  
 Acq On : 20 Aug 2019 18:24  
 Operator : SM/AJ  
 Sample : K4096-04MS  
 Misc :  
 ALS Vial : 9 Sample Multiplier: 1

**Instrument :**  
 ECD\_0  
**ClientSampleId :**  
 TR-05-081919MS

**Manual Integrations**  
**APPROVED**  
 Ankita  
 8/21/2019 1:59:47 PM

Integration File signal 1: autoint1.e  
 Integration File signal 2: autoint2.e  
 Quant Time: Aug 20 22:55:19 2019  
 Quant Method : Z:\pestpcbsrv\HPCHEM1\ECD\_0\methods\P0081719.M  
 Quant Title : GC EXTRACTABLES  
 QLast Update : Sat Aug 17 03:09:44 2019  
 Response via : Initial Calibration  
 Integrator: ChemStation 6890 Scale Mode: Small noise peaks clipped

Volume Inj. : 2 µl  
 Signal #1 Phase : ZB-MR2 Signal #2 Phase: ZB-MR2  
 Signal #1 Info : 30Mx0.32mmx 0.50µ Signal #2 Info : 30M x 0.32mm x 0.25µm

Compound	RT#1	RT#2	Resp#1	Resp#2	ng/ml	ng/ml
-----						
System Monitoring Compounds						
1) SA Tetrachlo...	4.139	3.505	1137150	995282	32.478	27.650
2) SA Decachlor...	9.622	8.372	943635	704008	17.737	17.460m
Target Compounds						
3) L1 AR-1016-1	5.290	4.558	476572	341979	297.138m	252.954m
4) L1 AR-1016-2	5.312	4.573	694531	354628	290.296	177.048m#
5) L1 AR-1016-3	5.372	4.746	447125	130535	300.180	120.658 #
6) L1 AR-1016-4	5.470	4.787	312995	263260	258.727m	291.542
7) L1 AR-1016-5	5.758	4.996	397892	268959	309.852m	233.486
31) L7 AR-1260-1	6.867	6.004	687981	518467	255.203	227.507
32) L7 AR-1260-2	7.124	6.193	913293	637963	246.139	217.744
33) L7 AR-1260-3	7.477	6.341	588285	582650	179.556	219.939
34) L7 AR-1260-4	7.704	6.805	664318	391046	216.297	172.832
35) L7 AR-1260-5	8.012	7.048	1321298	950791	186.600	172.767

(f)=RT Delta > 1/2 Window (#)=Amounts differ by > 25% (m)=manual int.

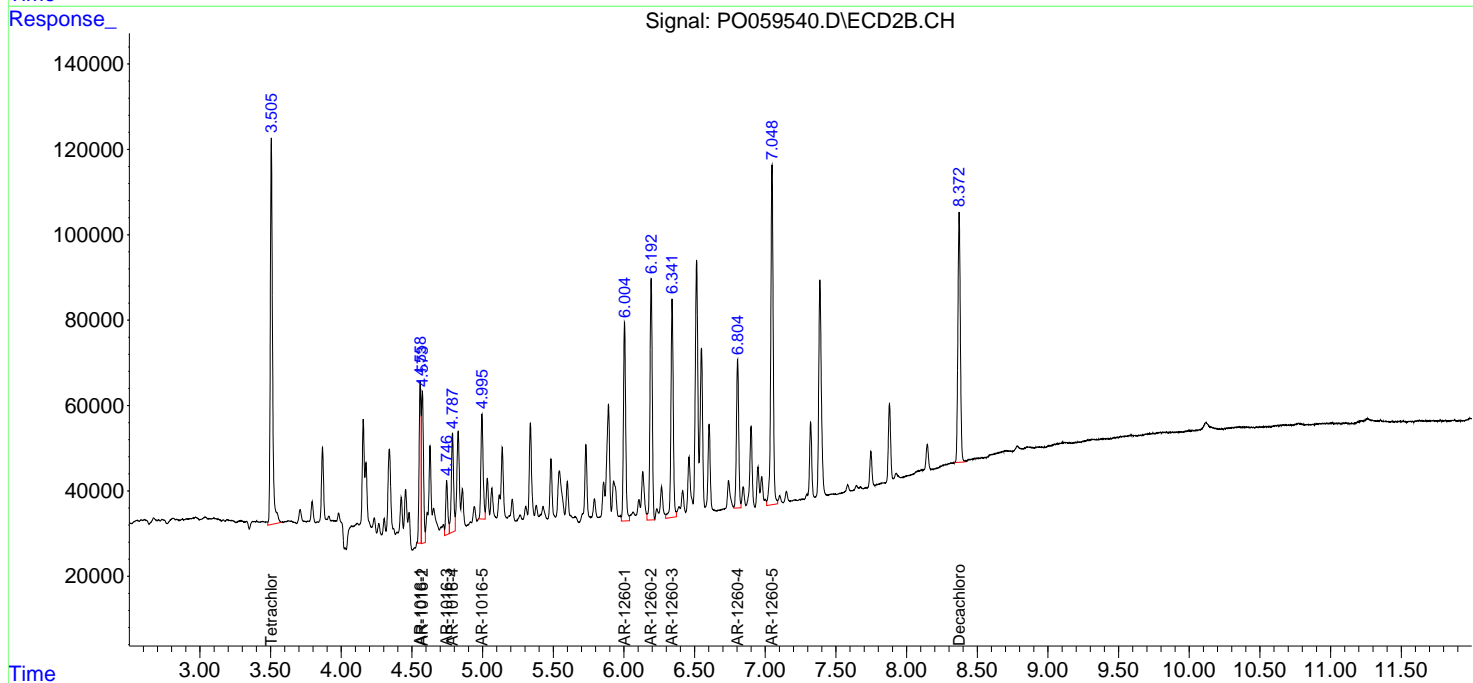
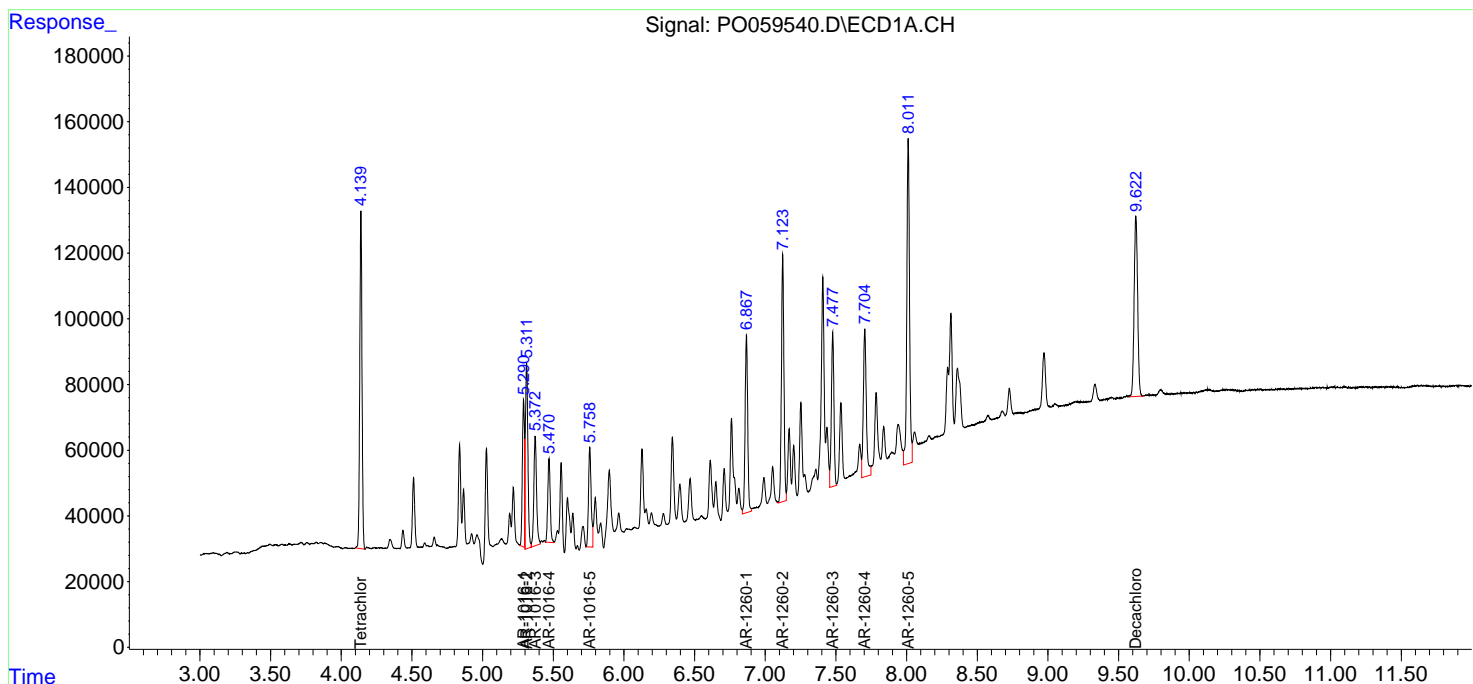
Data Path : Z:\pestpcbsrv\HPCHEM1\ECD\_O\Data\P0082019\  
 Data File : P0059540.D  
 Signal(s) : Signal #1: ECD1A.CH Signal #2: ECD2B.CH  
 Acq On : 20 Aug 2019 18:24  
 Operator : SM/AJ  
 Sample : K4096-04MS  
 Misc :  
 ALS Vial : 9 Sample Multiplier: 1

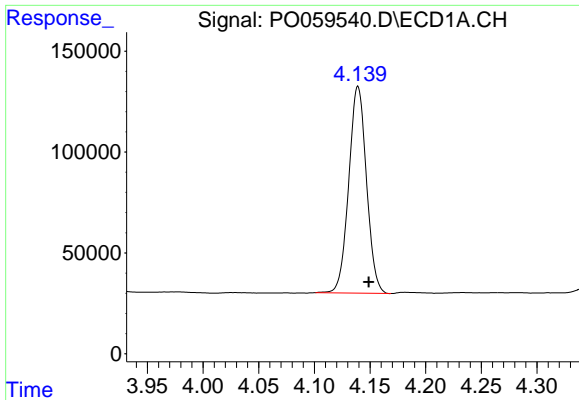
Instrument :  
 ECD\_O  
 Client Sampled :  
 TR-05-081919MS

Manual Integrations  
**APPROVED**  
 Ankita  
 8/21/2019 1:59:47 PM

Integration File signal 1: autoint1.e  
 Integration File signal 2: autoint2.e  
 Quant Time: Aug 20 22:55:19 2019  
 Quant Method : Z:\pestpcbsrv\HPCHEM1\ECD\_O\methods\P0081719.M  
 Quant Title : GC EXTRACTABLES  
 QLast Update : Sat Aug 17 03:09:44 2019  
 Response via : Initial Calibration  
 Integrator: ChemStation 6890 Scale Mode: Small noise peaks clipped

Volume Inj. : 2 µl  
 Signal #1 Phase : ZB-MR1 Signal #2 Phase: ZB-MR2  
 Signal #1 Info : 30Mx0.32mmx 0.50µ Signal #2 Info : 30M x 0.32mm x 0.25µm

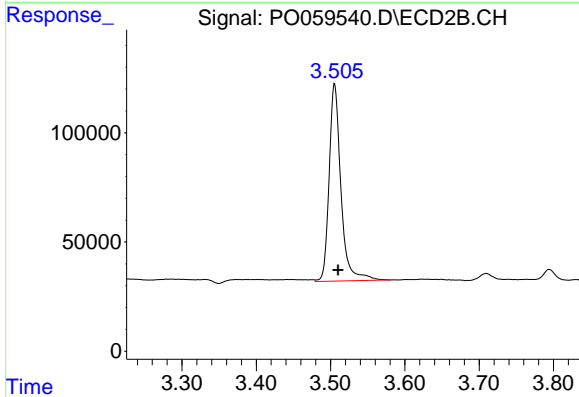




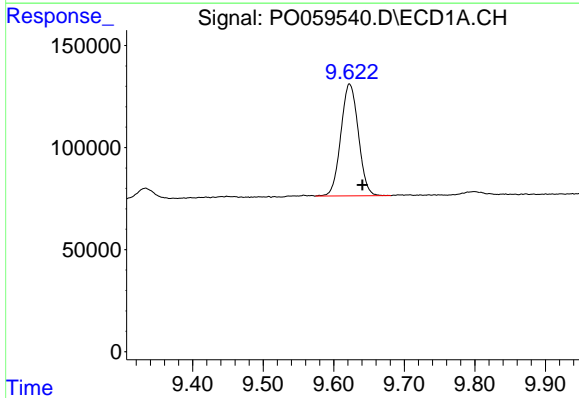
#1 Tetrachloro-m-xylene  
 R.T.: 4.139 min  
 Delta R.T.: -0.010 min  
 Response: 1137150  
 Conc: 32.48 ng/ml

Instrument :  
 ECD\_O  
 ClientSampled :  
 TR-05-081919MS

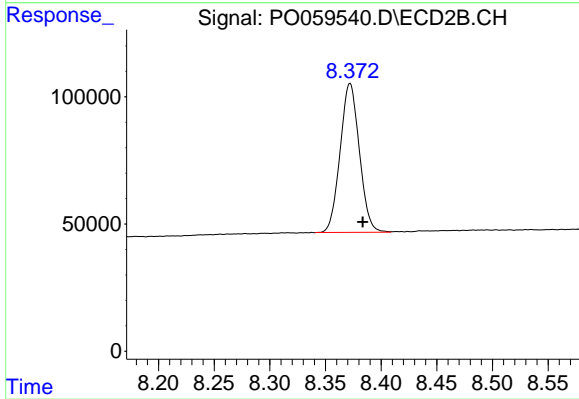
Manual Integrations  
 APPROVED  
 Ankita  
 8/21/2019 1:59:47 PM



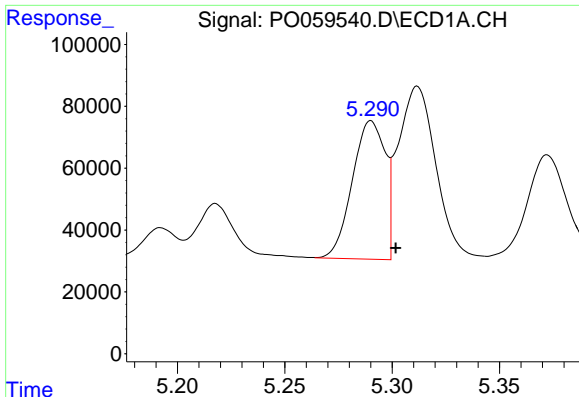
#1 Tetrachloro-m-xylene  
 R.T.: 3.505 min  
 Delta R.T.: -0.005 min  
 Response: 995282  
 Conc: 27.65 ng/ml



#2 Decachlorobiphenyl  
 R.T.: 9.622 min  
 Delta R.T.: -0.018 min  
 Response: 943635  
 Conc: 17.74 ng/ml



#2 Decachlorobiphenyl  
 R.T.: 8.372 min  
 Delta R.T.: -0.012 min  
 Response: 704008  
 Conc: 17.46 ng/ml m



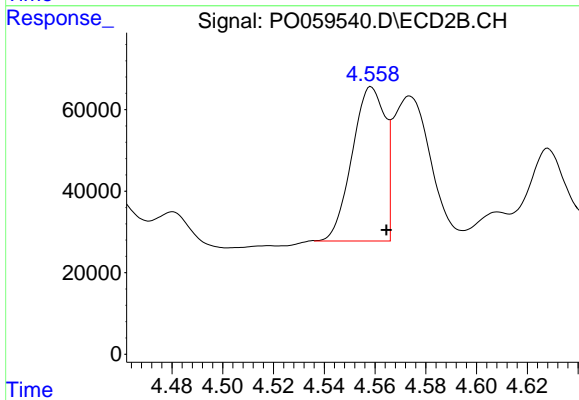
#3 AR-1016-1

R.T.: 5.290 min  
 Delta R.T.: -0.012 min  
 Response: 476572  
 Conc: 297.14 ng/ml m

Instrument :  
 ECD\_O  
 ClientSampleId :  
 TR-05-081919MS

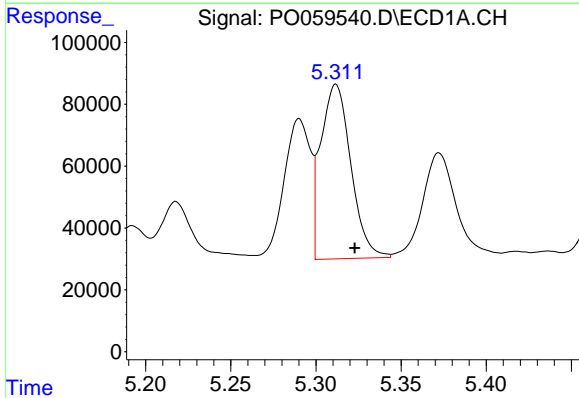
Manual Integrations  
 APPROVED

Ankita  
 8/21/2019 1:59:47 PM



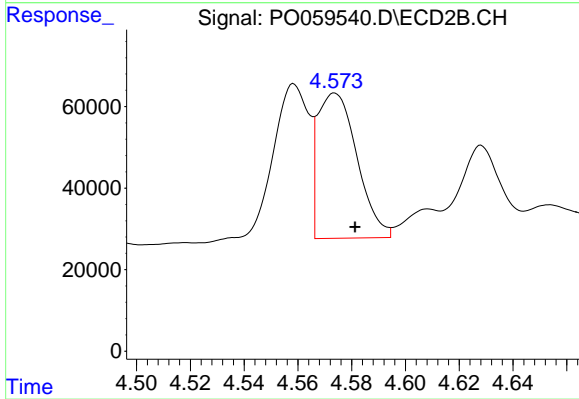
#3 AR-1016-1

R.T.: 4.558 min  
 Delta R.T.: -0.006 min  
 Response: 341979  
 Conc: 252.95 ng/ml m



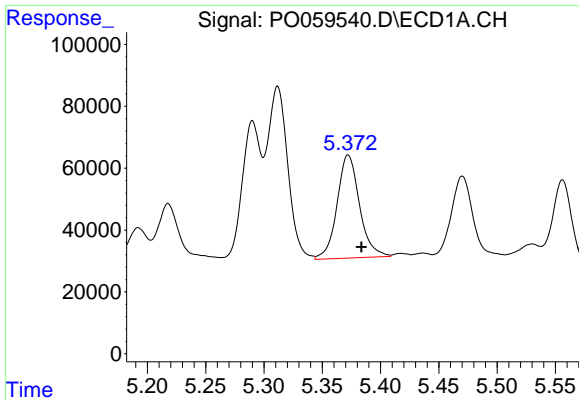
#4 AR-1016-2

R.T.: 5.312 min  
 Delta R.T.: -0.011 min  
 Response: 694531  
 Conc: 290.30 ng/ml



#4 AR-1016-2

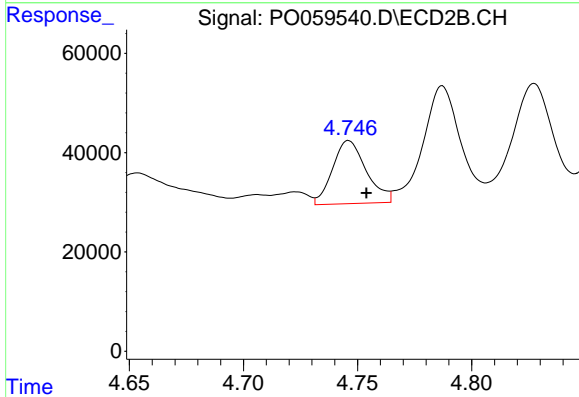
R.T.: 4.573 min  
 Delta R.T.: -0.008 min  
 Response: 354628  
 Conc: 177.05 ng/ml m



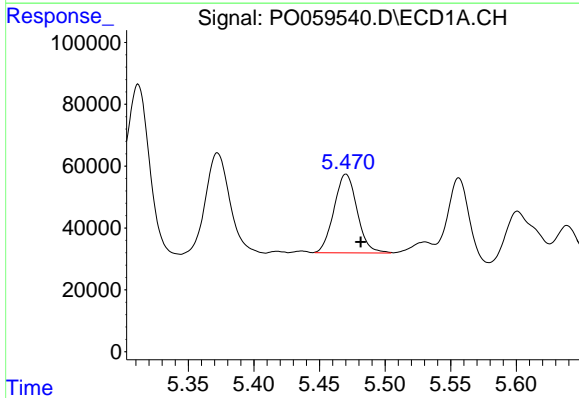
#5 AR-1016-3  
 R.T.: 5.372 min  
 Delta R.T.: -0.011 min  
 Response: 447125  
 Conc: 300.18 ng/ml

**Instrument :**  
 ECD\_O  
**ClientSampled :**  
 TR-05-081919MS

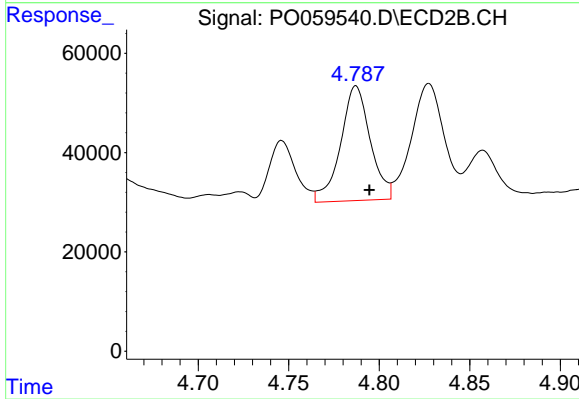
**Manual Integrations**  
**APPROVED**  
 Ankita  
 8/21/2019 1:59:47 PM



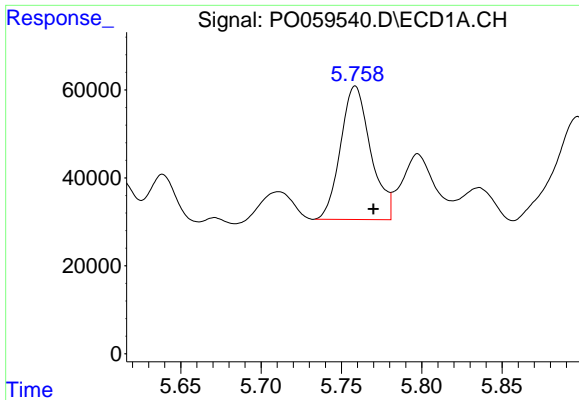
#5 AR-1016-3  
 R.T.: 4.746 min  
 Delta R.T.: -0.008 min  
 Response: 130535  
 Conc: 120.66 ng/ml



#6 AR-1016-4  
 R.T.: 5.470 min  
 Delta R.T.: -0.012 min  
 Response: 312995  
 Conc: 258.73 ng/ml m



#6 AR-1016-4  
 R.T.: 4.787 min  
 Delta R.T.: -0.007 min  
 Response: 263260  
 Conc: 291.54 ng/ml

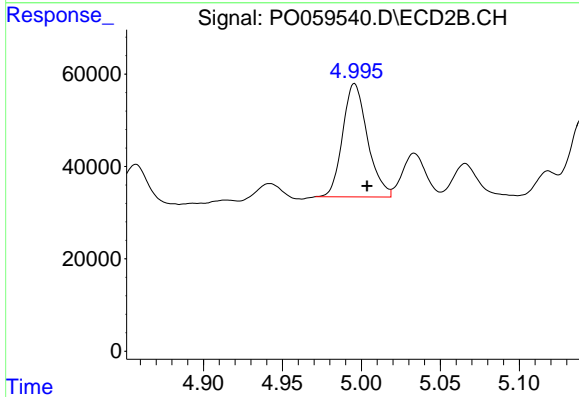


#7 AR-1016-5

R.T.: 5.758 min  
 Delta R.T.: -0.012 min  
 Response: 397892  
 Conc: 309.85 ng/ml m

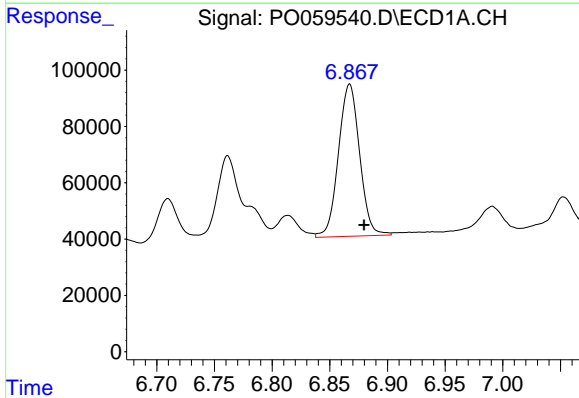
**Instrument :**  
 ECD\_O  
**ClientSampled :**  
 TR-05-081919MS

**Manual Integrations**  
**APPROVED**  
 Ankita  
 8/21/2019 1:59:47 PM



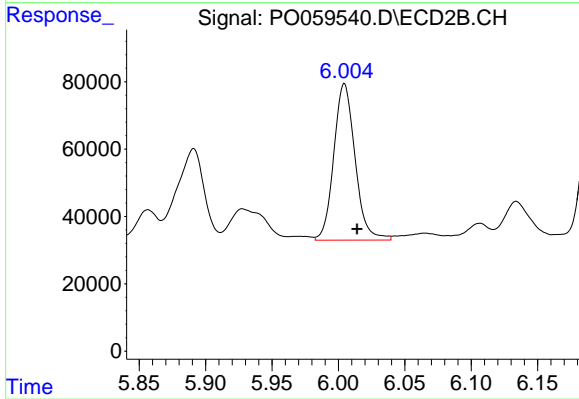
#7 AR-1016-5

R.T.: 4.996 min  
 Delta R.T.: -0.008 min  
 Response: 268959  
 Conc: 233.49 ng/ml



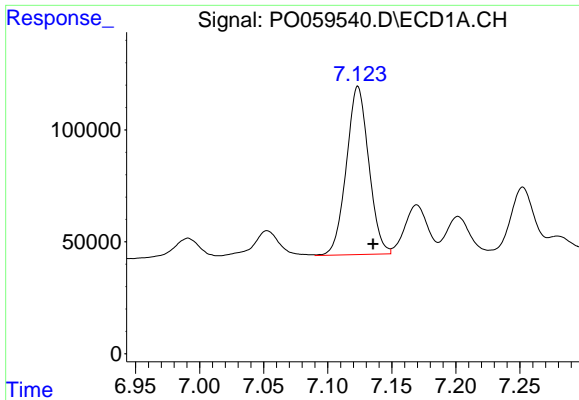
#31 AR-1260-1

R.T.: 6.867 min  
 Delta R.T.: -0.012 min  
 Response: 687981  
 Conc: 255.20 ng/ml



#31 AR-1260-1

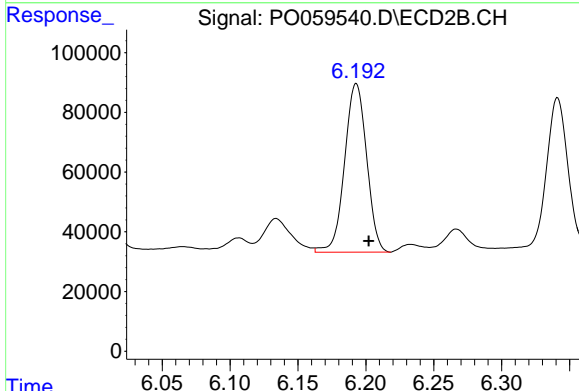
R.T.: 6.004 min  
 Delta R.T.: -0.010 min  
 Response: 518467  
 Conc: 227.51 ng/ml



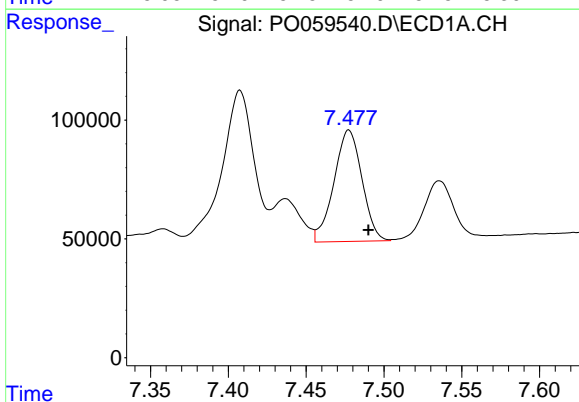
#32 AR-1260-2  
 R.T.: 7.124 min  
 Delta R.T.: -0.012 min  
 Response: 913293  
 Conc: 246.14 ng/ml

Instrument :  
 ECD\_O  
 ClientSampled :  
 TR-05-081919MS

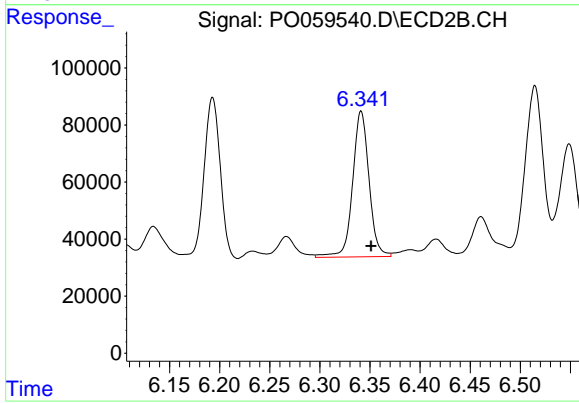
Manual Integrations  
**APPROVED**  
 Ankita  
 8/21/2019 1:59:47 PM



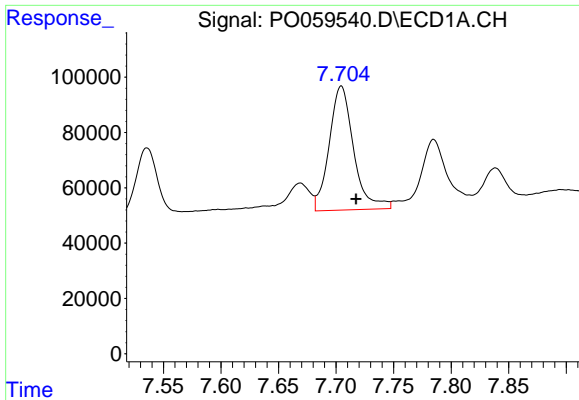
#32 AR-1260-2  
 R.T.: 6.193 min  
 Delta R.T.: -0.009 min  
 Response: 637963  
 Conc: 217.74 ng/ml



#33 AR-1260-3  
 R.T.: 7.477 min  
 Delta R.T.: -0.013 min  
 Response: 588285  
 Conc: 179.56 ng/ml



#33 AR-1260-3  
 R.T.: 6.341 min  
 Delta R.T.: -0.010 min  
 Response: 582650  
 Conc: 219.94 ng/ml

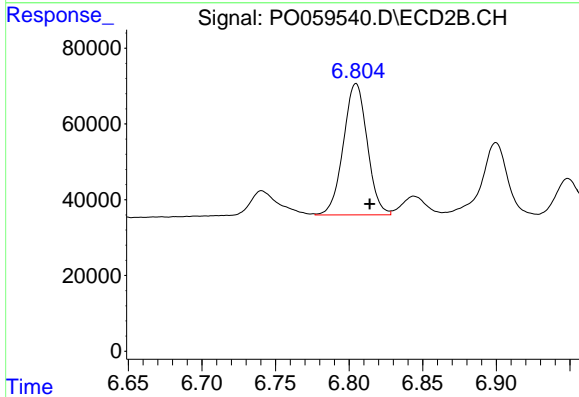


#34 AR-1260-4

R.T.: 7.704 min  
 Delta R.T.: -0.013 min  
 Response: 664318  
 Conc: 216.30 ng/ml

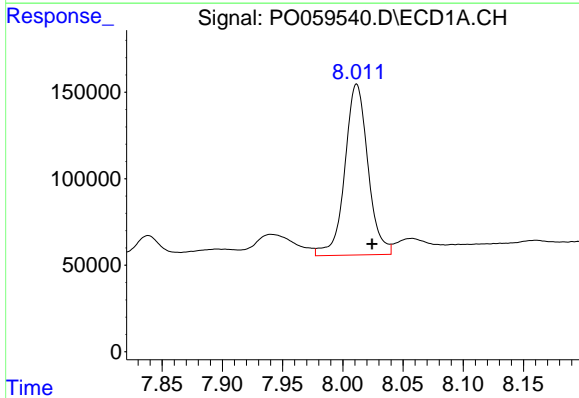
Instrument :  
 ECD\_O  
 ClientSampleId :  
 TR-05-081919MS

Manual Integrations  
 APPROVED  
 Ankita  
 8/21/2019 1:59:47 PM



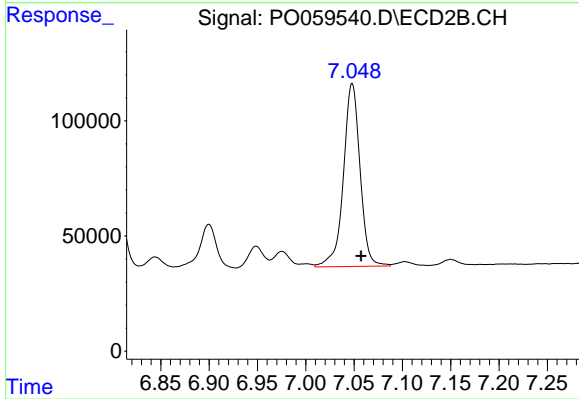
#34 AR-1260-4

R.T.: 6.805 min  
 Delta R.T.: -0.009 min  
 Response: 391046  
 Conc: 172.83 ng/ml



#35 AR-1260-5

R.T.: 8.012 min  
 Delta R.T.: -0.013 min  
 Response: 1321298  
 Conc: 186.60 ng/ml



#35 AR-1260-5

R.T.: 7.048 min  
 Delta R.T.: -0.009 min  
 Response: 950791  
 Conc: 172.77 ng/ml