

Data Path : Z:\pestpcbsrv\HPCHEM1\ECD\_0\Data\P0082119\  
 Data File : P0059602.D  
 Signal(s) : Signal #1: ECD1A.CH Signal #2: ECD2B.CH  
 Acq On : 21 Aug 2019 19:24  
 Operator : SM/AJ  
 Sample : K4444-04 5X  
 Misc :  
 ALS Vial : 9 Sample Multiplier: 1

Instrument :  
 ECD\_0  
 ClientSampled :  
 DEWATERING-BOX-082019-2

Integration File signal 1: autoint1.e  
 Integration File signal 2: autoint2.e  
 Quant Time: Aug 22 03:56:37 2019  
 Quant Method : Z:\pestpcbsrv\HPCHEM1\ECD\_0\methods\P0081719.M  
 Quant Title : GC EXTRACTABLES  
 QLast Update : Sat Aug 17 03:09:44 2019  
 Response via : Initial Calibration  
 Integrator: ChemStation 6890 Scale Mode: Small noise peaks clipped

Volume Inj. : 2 µl  
 Signal #1 Phase : ZB-MR1 Signal #2 Phase: ZB-MR2  
 Signal #1 Info : 30Mx0.32mmx 0.50µ Signal #2 Info : 30M x 0.32mm x 0.25µm

Compound	RT#1	RT#2	Resp#1	Resp#2	ng/ml	ng/ml
System Monitoring Compounds						
1) SA Tetrachlo...	4.130	3.501	168031	152993	4.799	4.250
2) SA Decachlor...	9.614	8.368	199963	134166	3.759	3.327
Target Compounds						
3) L1 AR-1016-1	5.304	0.000	2064	0	1.287	N.D. #
4) L1 AR-1016-2	5.317	0.000	618	0	0.258	N.D. #
5) L1 AR-1016-3	5.378	0.000	4034	0	2.709	N.D. #
6) L1 AR-1016-4	5.468	0.000	96	0	0.079	N.D. #
7) L1 AR-1016-5	5.752	0.000	1333	0	1.038	N.D. #
8) L2 AR-1221-1	4.354	3.663	865	11546	2.042	28.767 #
9) L2 AR-1221-2	4.460	3.832	1954	11795	6.015	38.718 #
10) L2 AR-1221-3	4.511	3.832	1445	11795	1.374	12.054 #
11) L3 AR-1232-1	4.511	3.832	1445	11795	1.159	10.345 #
12) L3 AR-1232-2	5.049	0.000	1285	0	1.820	N.D. #
13) L3 AR-1232-3	5.317	0.000	618	0	0.403	N.D. #
14) L3 AR-1232-4	5.468	0.000	96	0	0.123	N.D. #
15) L3 AR-1232-5	5.585	0.000	6422	0	10.684	N.D. #
16) L4 AR-1242-1	5.304	0.000	2064	0	1.626	N.D. #
17) L4 AR-1242-2	5.317	0.000	618	0	0.333	N.D. #
18) L4 AR-1242-3	5.378	0.000	4034	0	3.452	N.D. #
19) L4 AR-1242-4	5.468	0.000	96	0	0.099	N.D. #
20) L4 AR-1242-5	0.000	5.305	0	127	N.D.	0.113 #
21) L5 AR-1248-1	5.304	0.000	2064	0	2.059	N.D. #
22) L5 AR-1248-2	5.585	0.000	6422	0	4.426	N.D. #
23) L5 AR-1248-3	5.752	0.000	1333	0	0.802	N.D. #
27) L6 AR-1254-2	0.000	5.544	0	2363	N.D.	1.126 #
28) L6 AR-1254-3	6.735	5.888	20160	7457	5.681	2.218 #
29) L6 AR-1254-4	0.000	6.156	0	5855	N.D.	2.840 #
30) L6 AR-1254-5	0.000	6.509	0	6844	N.D.	2.204 #
31) L7 AR-1260-1	0.000	6.003	0	10779	N.D.	4.730 #
33) L7 AR-1260-3	0.000	6.341	0	5365	N.D.	2.025 #
34) L7 AR-1260-4	0.000	6.796	0	3701	N.D.	1.636 #
35) L7 AR-1260-5	0.000	7.043	0	14072	N.D.	2.557 #
36) L8 AR-1262-1	0.000	6.540	0	3019	N.D.	0.810 #
37) L8 AR-1262-2	0.000	7.043	0	14072	N.D.	2.394 #
38) L8 AR-1262-3	0.000	7.384	0	12603	N.D.	4.960 #
39) L8 AR-1262-4	0.000	7.384	0	12603	N.D.	2.852 #
41) L9 AR-1268-1	0.000	7.384	0	12603	N.D.	1.770 #
42) L9 AR-1268-2	0.000	7.384	0	12603	N.D.	1.955 #
43) L9 AR-1268-3	8.570	7.585	243453	4652	34.538	0.850 #
45) L9 AR-1268-5	9.336	8.155	66206	3947	3.590	0.272 #

Data Path : Z:\pestpcbsrv\HPCHEM1\ECD\_0\Data\P0082119\  
Data File : P0059602.D  
Signal(s) : Signal #1: ECD1A.CH Signal #2: ECD2B.CH  
Acq On : 21 Aug 2019 19:24  
Operator : SM/AJ  
Sample : K4444-04 5X  
Misc :  
ALS Vial : 9 Sample Multiplier: 1

Instrument :  
ECD\_O  
ClientSampleId :  
DEWATERING-BOX-082019-2

Integration File signal 1: autoint1.e  
Integration File signal 2: autoint2.e  
Quant Time: Aug 22 03:56:37 2019  
Quant Method : Z:\pestpcbsrv\HPCHEM1\ECD\_0\methods\P0081719.M  
Quant Title : GC EXTRACTABLES  
QLast Update : Sat Aug 17 03:09:44 2019  
Response via : Initial Calibration  
Integrator: ChemStation 6890 Scale Mode: Small noise peaks clipped

Volume Inj. : 2 µl  
Signal #1 Phase : ZB-MR1 Signal #2 Phase: ZB-MR2  
Signal #1 Info : 30Mx0.32mmx 0.50µ Signal #2 Info : 30M x 0.32mm x 0.25µm

Compound	RT#1	RT#2	Resp#1	Resp#2	ng/ml	ng/ml
----------	------	------	--------	--------	-------	-------

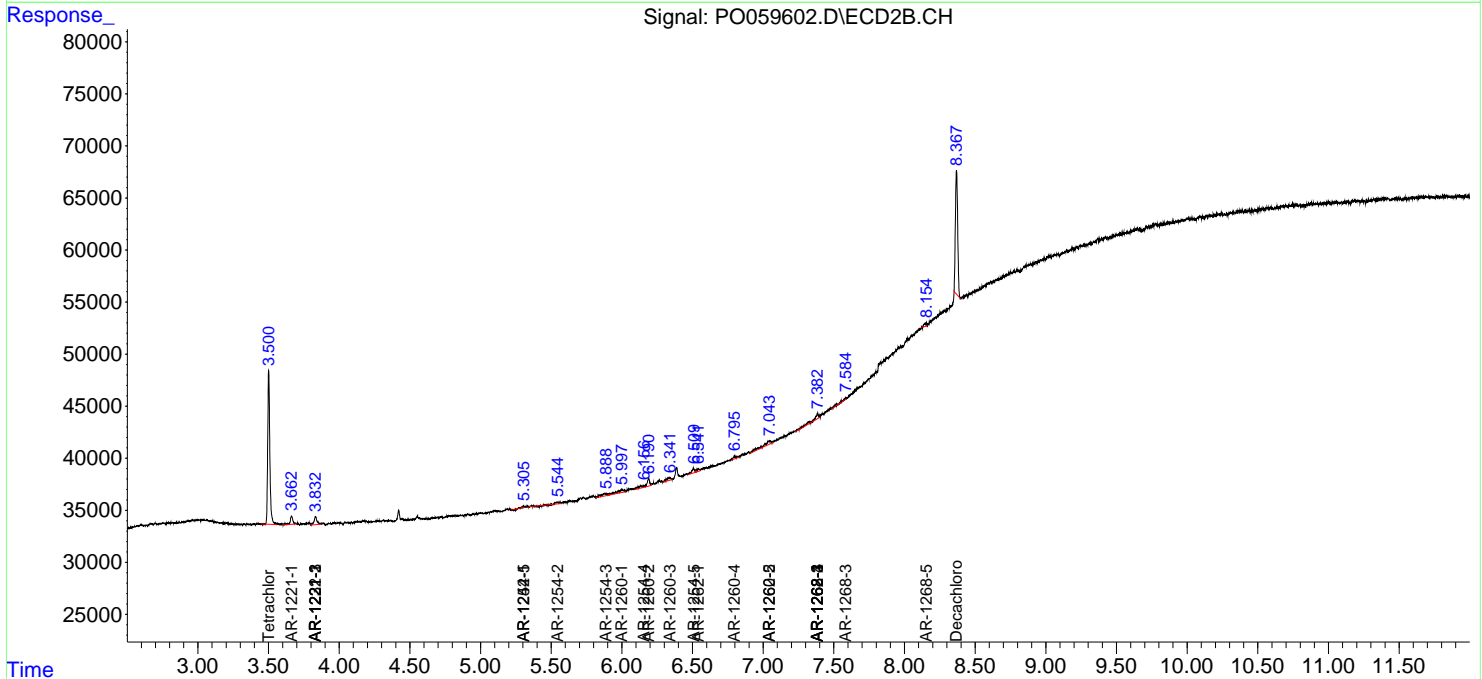
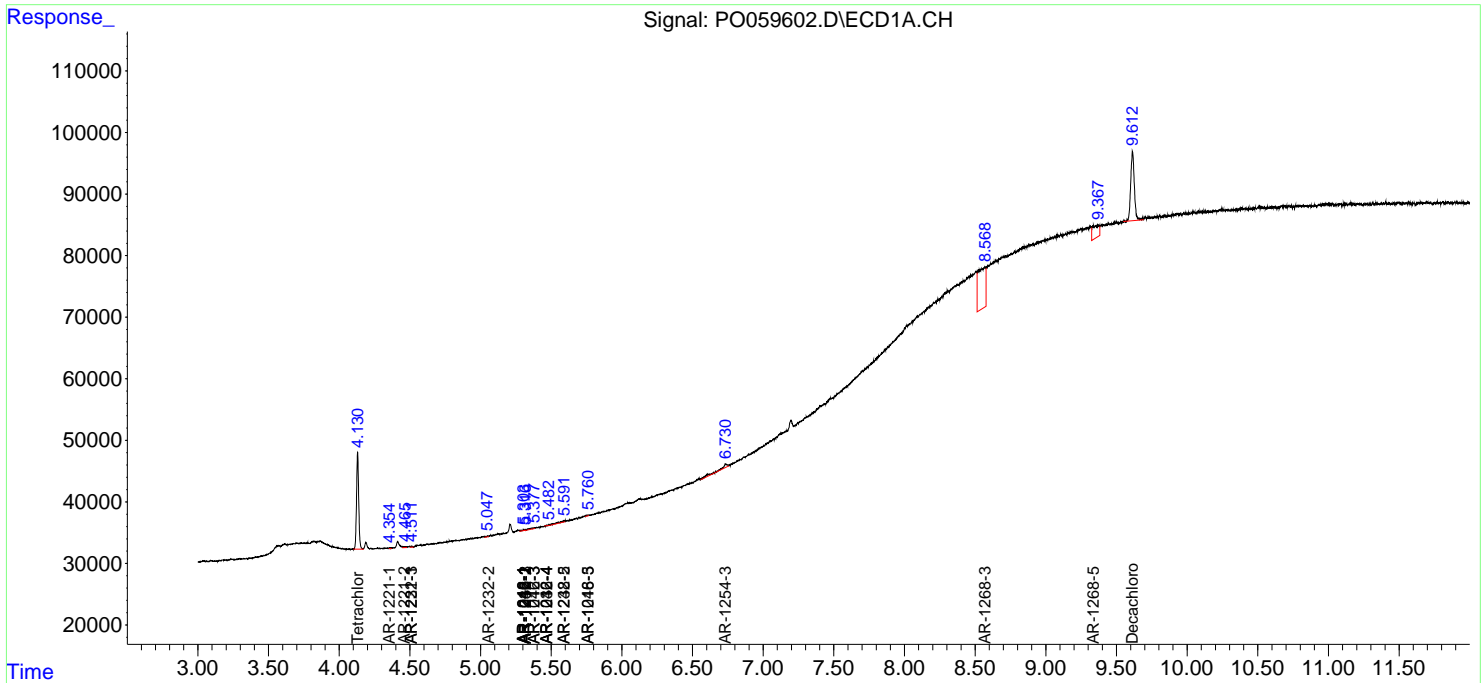
-----  
(f)=RT Delta > 1/2 Window (#)=Amounts differ by > 25% (m)=manual int.

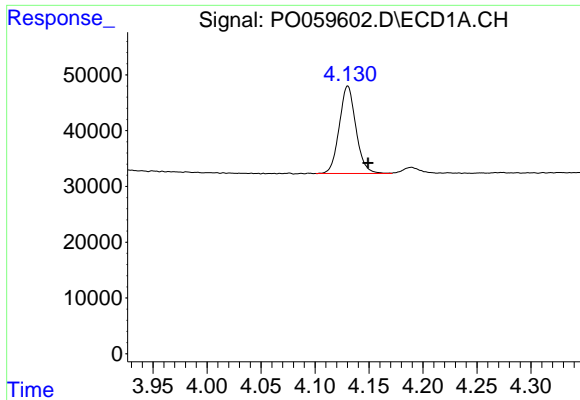
Data Path : Z:\pestpcbsrv\HPCHEM1\ECD\_O\Data\PO082119\  
 Data File : PO059602.D  
 Signal(s) : Signal #1: ECD1A.CH Signal #2: ECD2B.CH  
 Acq On : 21 Aug 2019 19:24  
 Operator : SM/AJ  
 Sample : K4444-04 5X  
 Misc :  
 ALS Vial : 9 Sample Multiplier: 1

**Instrument :**  
 ECD\_O  
**Client Sampled :**  
 DEWATERING-BOX-082019-2

Integration File signal 1: autoint1.e  
 Integration File signal 2: autoint2.e  
 Quant Time: Aug 22 03:56:37 2019  
 Quant Method : Z:\pestpcbsrv\HPCHEM1\ECD\_O\methods\PO081719.M  
 Quant Title : GC EXTRACTABLES  
 QLast Update : Sat Aug 17 03:09:44 2019  
 Response via : Initial Calibration  
 Integrator: ChemStation 6890 Scale Mode: Small noise peaks clipped

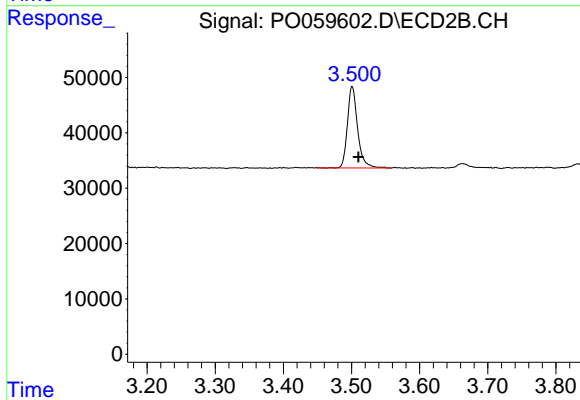
Volume Inj. : 2 µl  
 Signal #1 Phase : ZB-MR1 Signal #2 Phase: ZB-MR2  
 Signal #1 Info : 30Mx0.32mmx 0.50µ Signal #2 Info : 30M x 0.32mm x 0.25µm



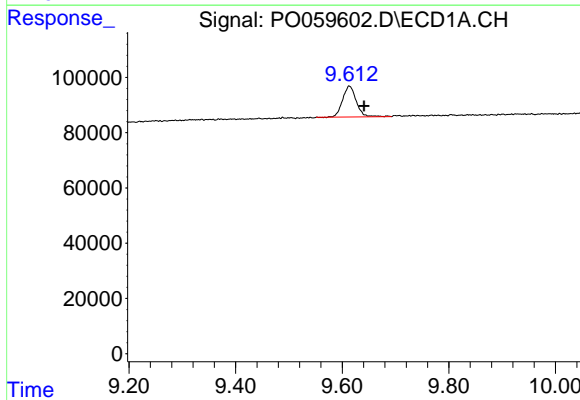


#1 Tetrachloro-m-xylene  
 R.T.: 4.130 min  
 Delta R.T.: -0.019 min  
 Response: 168031  
 Conc: 4.80 ng/ml

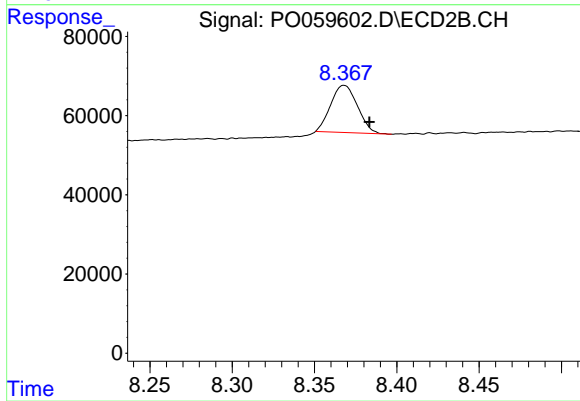
Instrument :  
 ECD\_O  
 ClientSampleId :  
 DEWATERING-BOX-082019-2



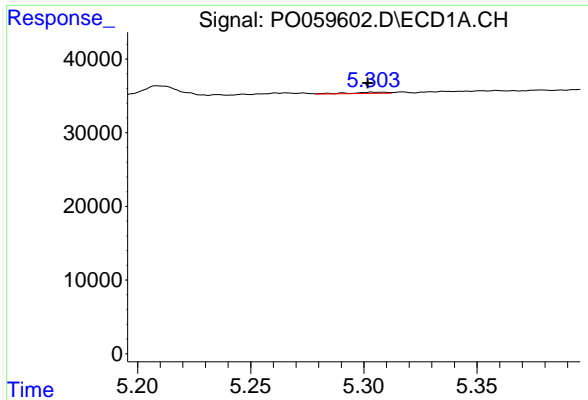
#1 Tetrachloro-m-xylene  
 R.T.: 3.501 min  
 Delta R.T.: -0.009 min  
 Response: 152993  
 Conc: 4.25 ng/ml



#2 Decachlorobiphenyl  
 R.T.: 9.614 min  
 Delta R.T.: -0.027 min  
 Response: 199963  
 Conc: 3.76 ng/ml

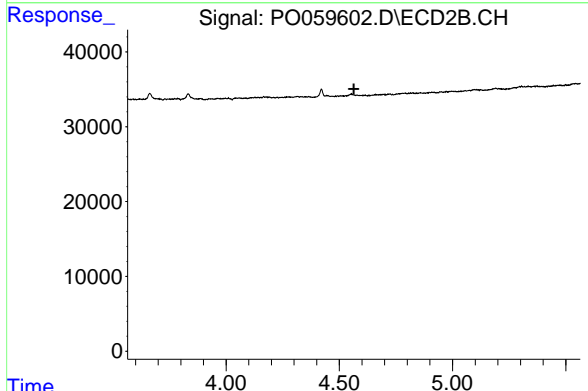


#2 Decachlorobiphenyl  
 R.T.: 8.368 min  
 Delta R.T.: -0.015 min  
 Response: 134166  
 Conc: 3.33 ng/ml

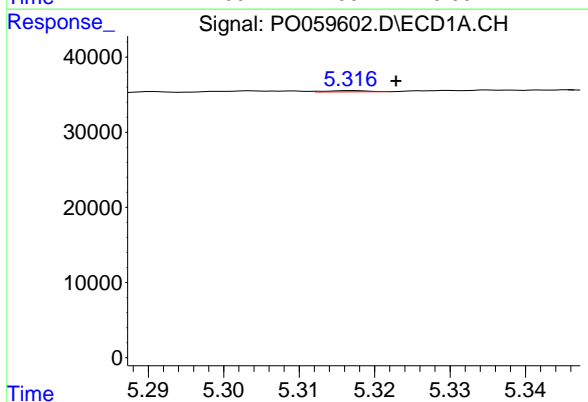


#3 AR-1016-1  
 R.T.: 5.304 min  
 Delta R.T.: 0.002 min  
 Response: 2064  
 Conc: 1.29 ng/ml

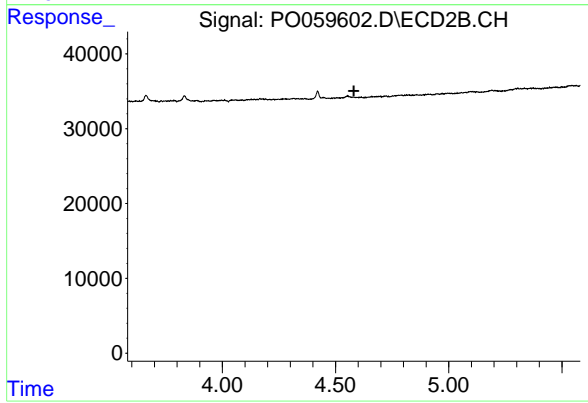
Instrument :  
 ECD\_O  
 ClientSampleId :  
 DEWATERING-BOX-082019-2



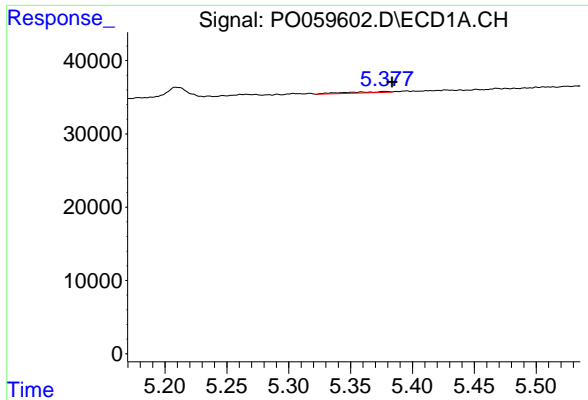
#3 AR-1016-1  
 R.T.: 0.000 min  
 Exp R.T. : 4.565 min  
 Response: 0  
 Conc: N.D.



#4 AR-1016-2  
 R.T.: 5.317 min  
 Delta R.T.: -0.006 min  
 Response: 618  
 Conc: 0.26 ng/ml



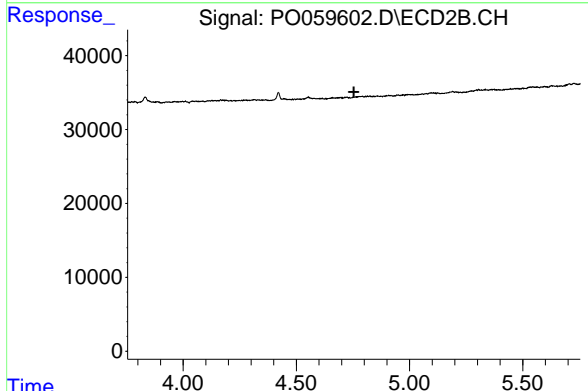
#4 AR-1016-2  
 R.T.: 0.000 min  
 Exp R.T. : 4.581 min  
 Response: 0  
 Conc: N.D.



#5 AR-1016-3

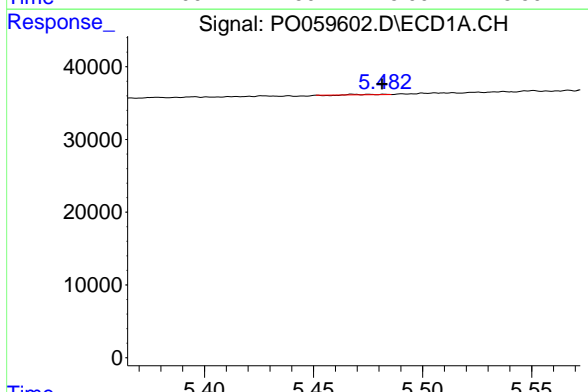
R.T.: 5.378 min  
 Delta R.T.: -0.005 min  
 Response: 4034  
 Conc: 2.71 ng/ml

**Instrument :**  
 ECD\_O  
**ClientSampleId :**  
 DEWATERING-BOX-082019-2



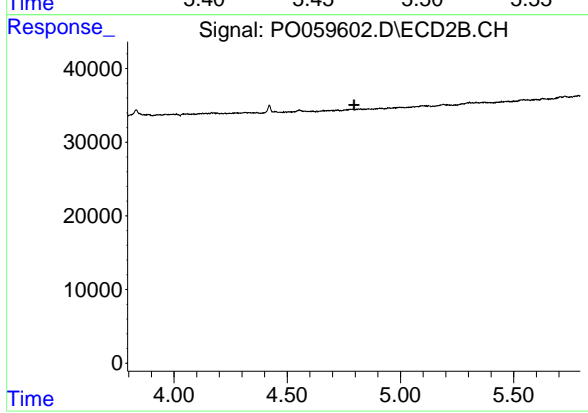
#5 AR-1016-3

R.T.: 0.000 min  
 Exp R.T. : 4.754 min  
 Response: 0  
 Conc: N.D.



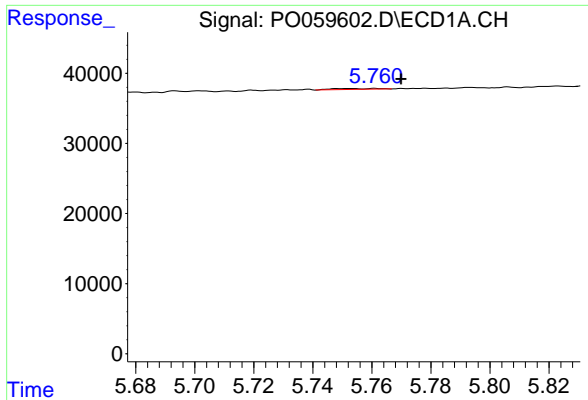
#6 AR-1016-4

R.T.: 5.468 min  
 Delta R.T.: -0.013 min  
 Response: 96  
 Conc: 0.08 ng/ml



#6 AR-1016-4

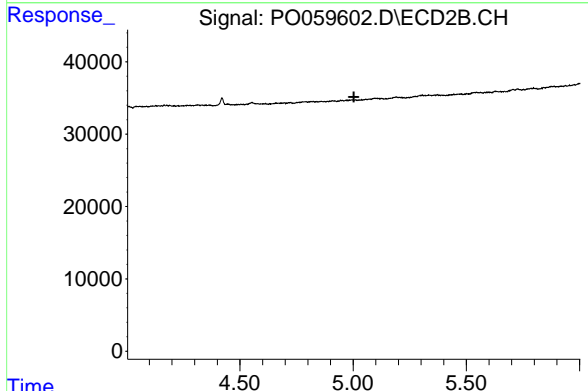
R.T.: 0.000 min  
 Exp R.T. : 4.795 min  
 Response: 0  
 Conc: N.D.



#7 AR-1016-5

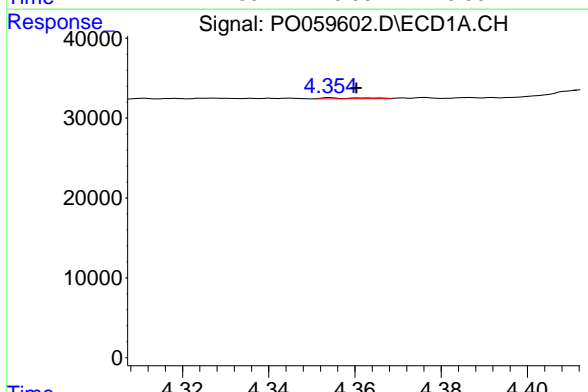
R.T.: 5.752 min  
 Delta R.T.: -0.018 min  
 Response: 1333  
 Conc: 1.04 ng/ml

**Instrument :**  
 ECD\_O  
**ClientSampleId :**  
 DEWATERING-BOX-082019-2



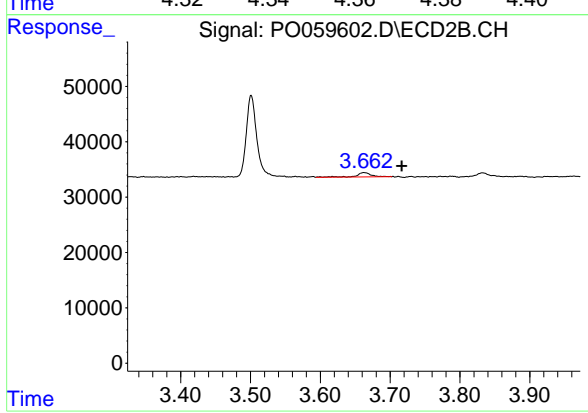
#7 AR-1016-5

R.T.: 0.000 min  
 Exp R.T. : 5.004 min  
 Response: 0  
 Conc: N.D.



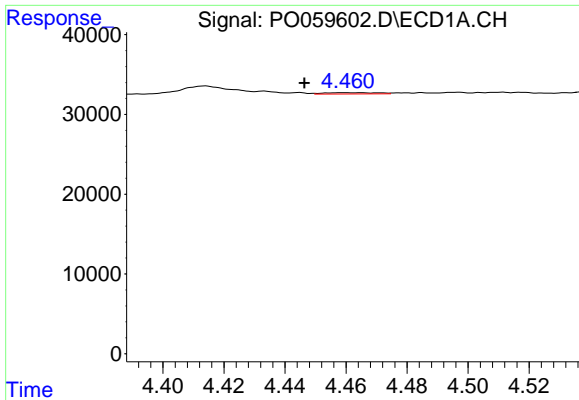
#8 AR-1221-1

R.T.: 4.354 min  
 Delta R.T.: -0.006 min  
 Response: 865  
 Conc: 2.04 ng/ml



#8 AR-1221-1

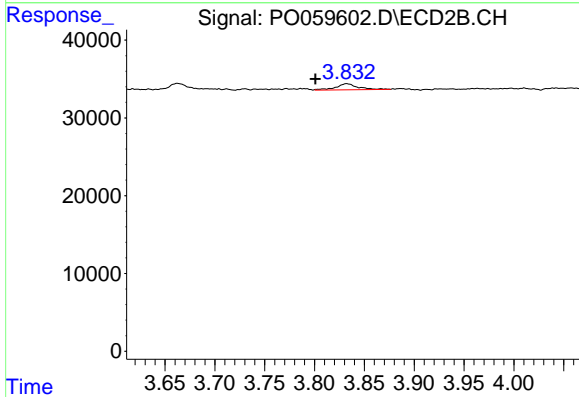
R.T.: 3.663 min  
 Delta R.T.: -0.054 min  
 Response: 11546  
 Conc: 28.77 ng/ml



#9 AR-1221-2

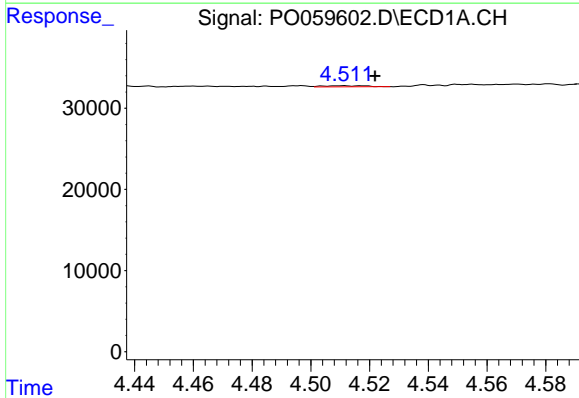
R.T.: 4.460 min  
 Delta R.T.: 0.013 min  
 Response: 1954  
 Conc: 6.02 ng/ml

Instrument :  
 ECD\_O  
 ClientSampleId :  
 DEWATERING-BOX-082019-2



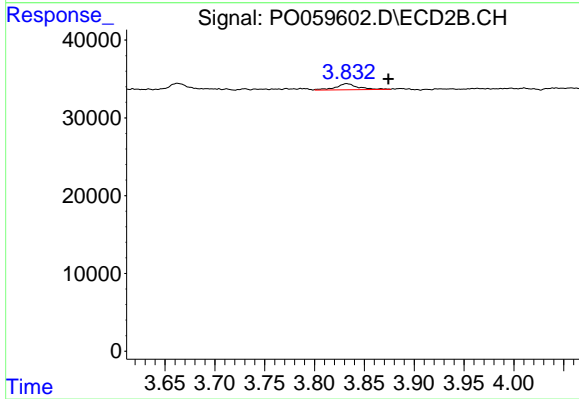
#9 AR-1221-2

R.T.: 3.832 min  
 Delta R.T.: 0.031 min  
 Response: 11795  
 Conc: 38.72 ng/ml



#10 AR-1221-3

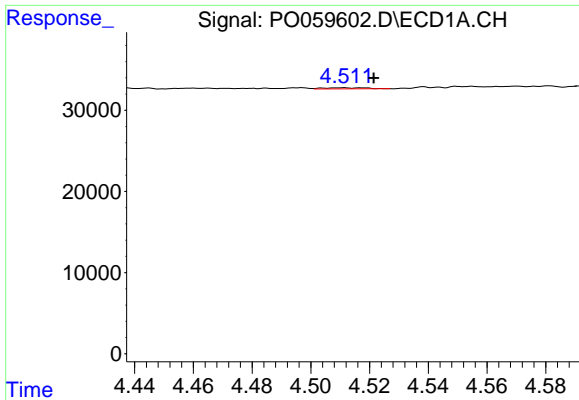
R.T.: 4.511 min  
 Delta R.T.: -0.011 min  
 Response: 1445  
 Conc: 1.37 ng/ml



#10 AR-1221-3

R.T.: 3.832 min  
 Delta R.T.: -0.042 min  
 Response: 11795  
 Conc: 12.05 ng/ml

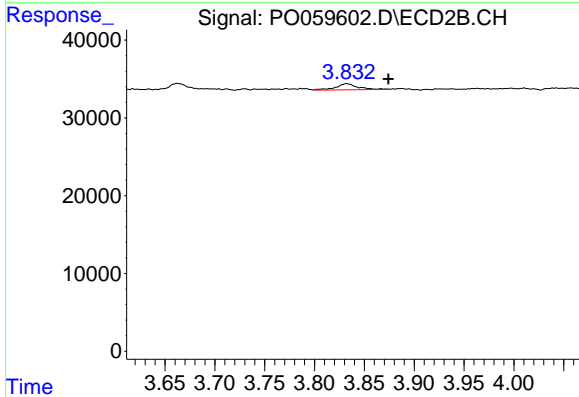




#11 AR-1232-1

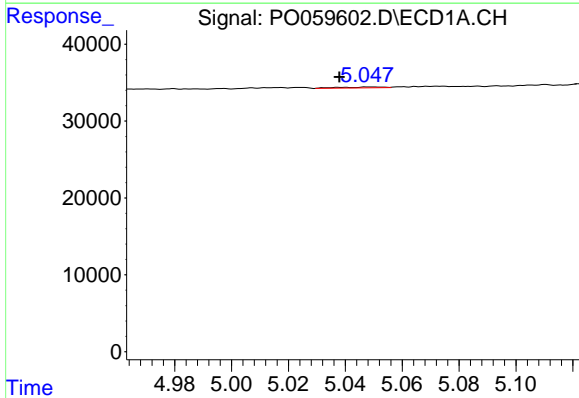
R.T.: 4.511 min  
 Delta R.T.: -0.011 min  
 Response: 1445  
 Conc: 1.16 ng/ml

**Instrument :**  
 ECD\_O  
**ClientSampled :**  
 DEWATERING-BOX-082019-2



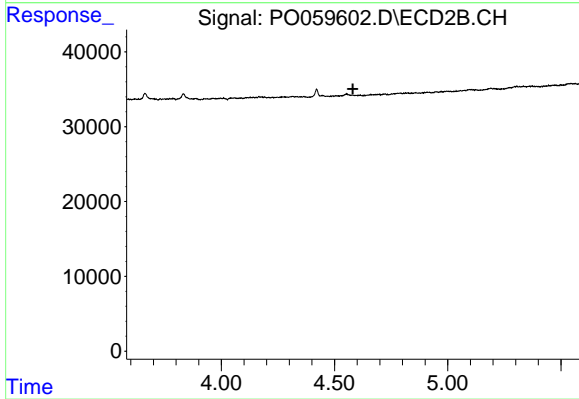
#11 AR-1232-1

R.T.: 3.832 min  
 Delta R.T.: -0.042 min  
 Response: 11795  
 Conc: 10.34 ng/ml



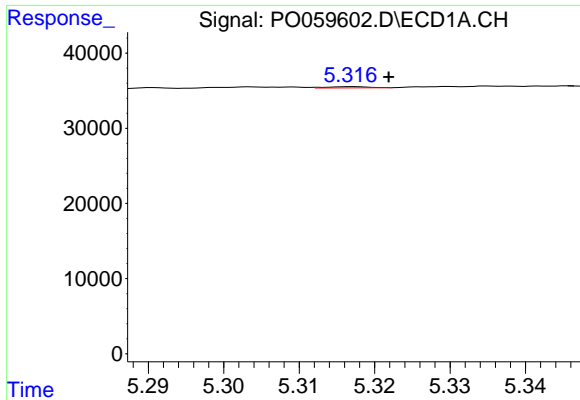
#12 AR-1232-2

R.T.: 5.049 min  
 Delta R.T.: 0.011 min  
 Response: 1285  
 Conc: 1.82 ng/ml



#12 AR-1232-2

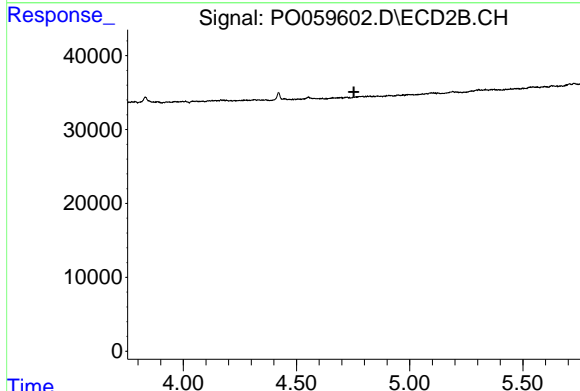
R.T.: 0.000 min  
 Exp R.T. : 4.581 min  
 Response: 0  
 Conc: N.D.



#13 AR-1232-3

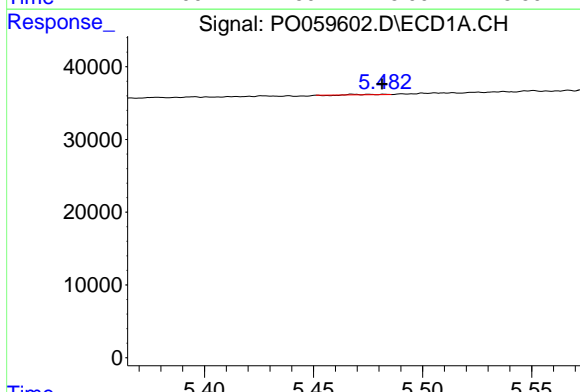
R.T.: 5.317 min  
 Delta R.T.: -0.005 min  
 Response: 618  
 Conc: 0.40 ng/ml

**Instrument :**  
 ECD\_O  
**ClientSampleId :**  
 DEWATERING-BOX-082019-2



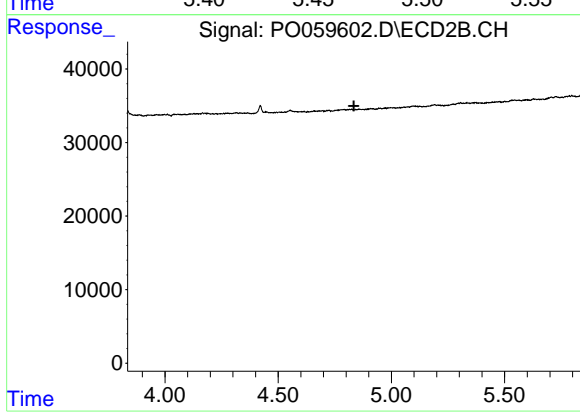
#13 AR-1232-3

R.T.: 0.000 min  
 Exp R.T. : 4.753 min  
 Response: 0  
 Conc: N.D.



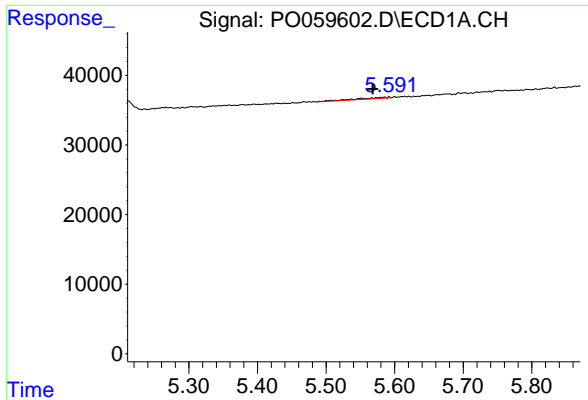
#14 AR-1232-4

R.T.: 5.468 min  
 Delta R.T.: -0.013 min  
 Response: 96  
 Conc: 0.12 ng/ml



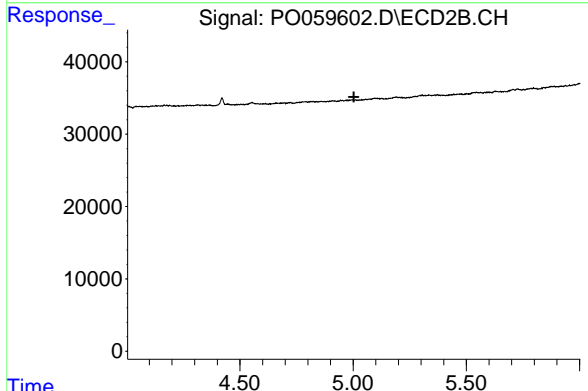
#14 AR-1232-4

R.T.: 0.000 min  
 Exp R.T. : 4.834 min  
 Response: 0  
 Conc: N.D.

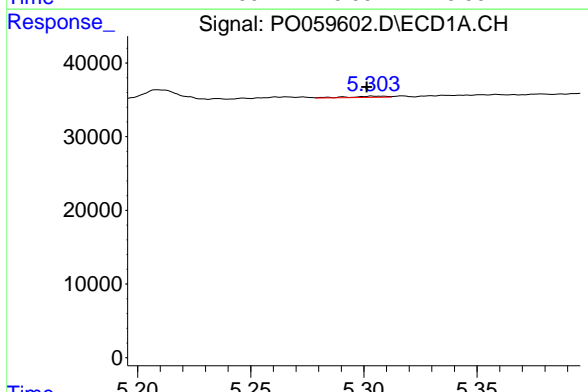


#15 AR-1232-5  
 R.T.: 5.585 min  
 Delta R.T.: 0.017 min  
 Response: 6422  
 Conc: 10.68 ng/ml

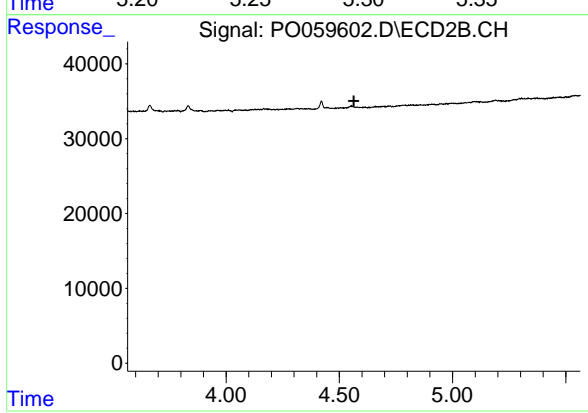
Instrument :  
 ECD\_O  
 ClientSampleId :  
 DEWATERING-BOX-082019-2



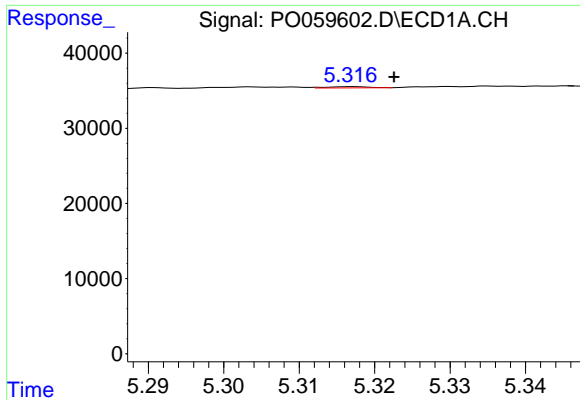
#15 AR-1232-5  
 R.T.: 0.000 min  
 Exp R.T. : 5.004 min  
 Response: 0  
 Conc: N.D.



#16 AR-1242-1  
 R.T.: 5.304 min  
 Delta R.T.: 0.003 min  
 Response: 2064  
 Conc: 1.63 ng/ml



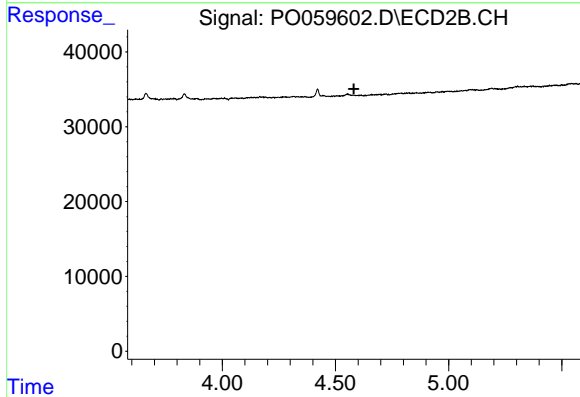
#16 AR-1242-1  
 R.T.: 0.000 min  
 Exp R.T. : 4.564 min  
 Response: 0  
 Conc: N.D.



#17 AR-1242-2

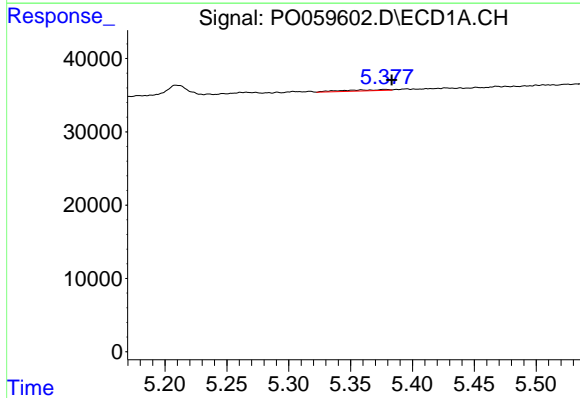
R.T.: 5.317 min  
 Delta R.T.: -0.006 min  
 Response: 618  
 Conc: 0.33 ng/ml

Instrument :  
 ECD\_O  
 ClientSampleId :  
 DEWATERING-BOX-082019-2



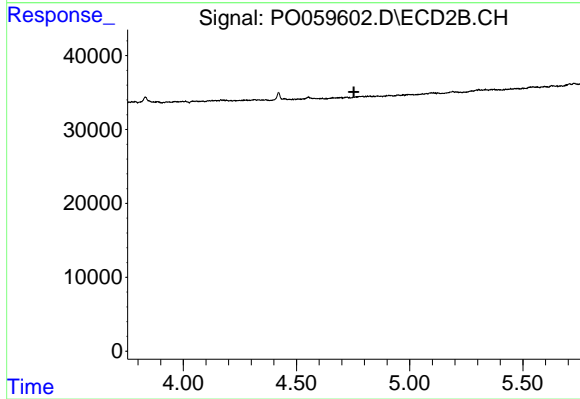
#17 AR-1242-2

R.T.: 0.000 min  
 Exp R.T. : 4.581 min  
 Response: 0  
 Conc: N.D.



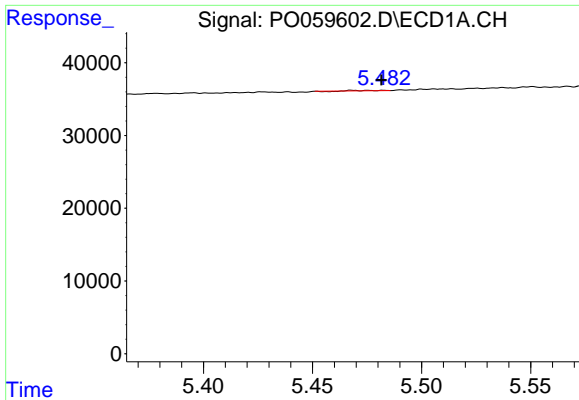
#18 AR-1242-3

R.T.: 5.378 min  
 Delta R.T.: -0.005 min  
 Response: 4034  
 Conc: 3.45 ng/ml



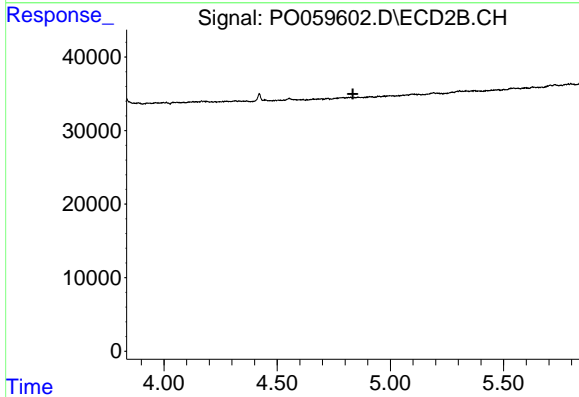
#18 AR-1242-3

R.T.: 0.000 min  
 Exp R.T. : 4.754 min  
 Response: 0  
 Conc: N.D.

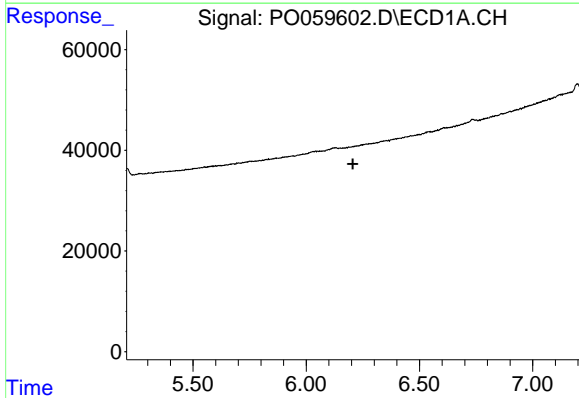


#19 AR-1242-4  
 R.T.: 5.468 min  
 Delta R.T.: -0.013 min  
 Response: 96  
 Conc: 0.10 ng/ml

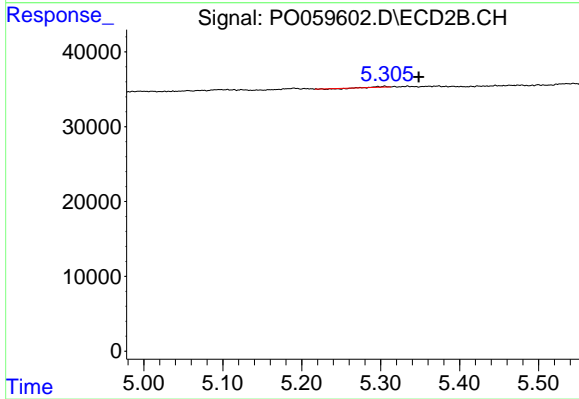
**Instrument :**  
 ECD\_O  
**ClientSampleId :**  
 DEWATERING-BOX-082019-2



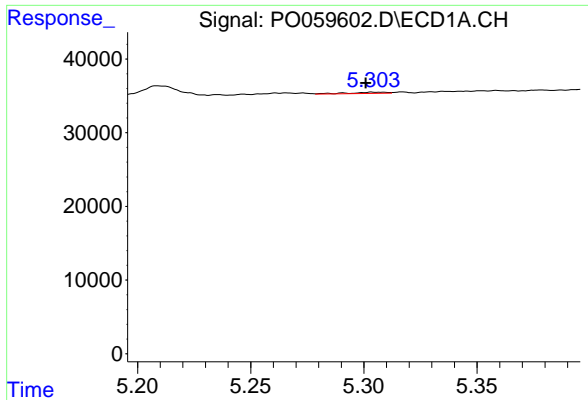
#19 AR-1242-4  
 R.T.: 0.000 min  
 Exp R.T. : 4.834 min  
 Response: 0  
 Conc: N.D.



#20 AR-1242-5  
 R.T.: 0.000 min  
 Exp R.T. : 6.206 min  
 Response: 0  
 Conc: N.D.

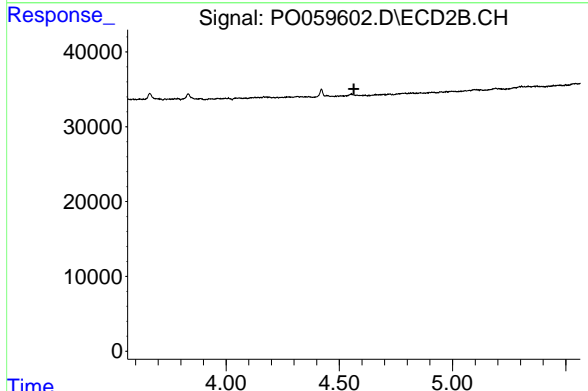


#20 AR-1242-5  
 R.T.: 5.305 min  
 Delta R.T.: -0.043 min  
 Response: 127  
 Conc: 0.11 ng/ml

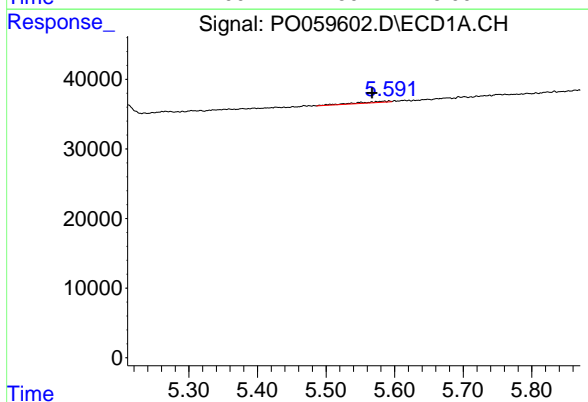


#21 AR-1248-1  
 R.T.: 5.304 min  
 Delta R.T.: 0.003 min  
 Response: 2064  
 Conc: 2.06 ng/ml

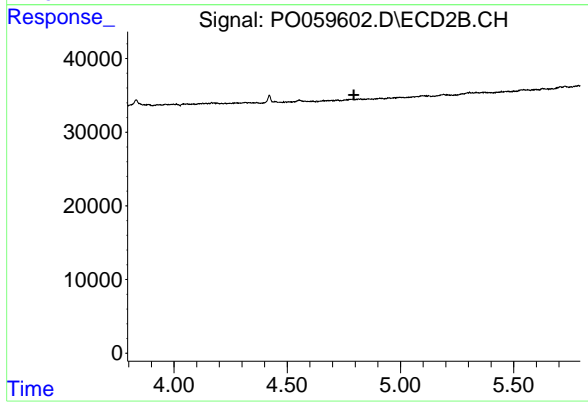
**Instrument :**  
 ECD\_O  
**ClientSampled :**  
 DEWATERING-BOX-082019-2



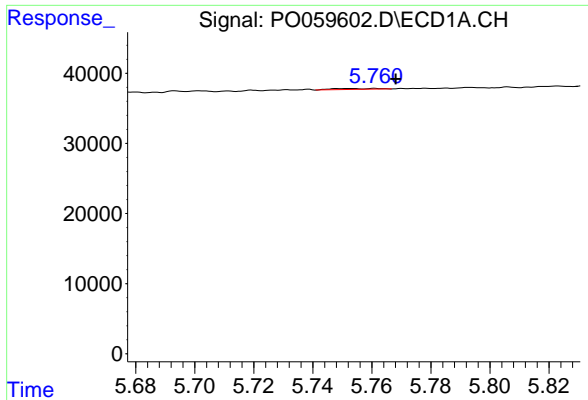
#21 AR-1248-1  
 R.T.: 0.000 min  
 Exp R.T. : 4.564 min  
 Response: 0  
 Conc: N.D.



#22 AR-1248-2  
 R.T.: 5.585 min  
 Delta R.T.: 0.018 min  
 Response: 6422  
 Conc: 4.43 ng/ml



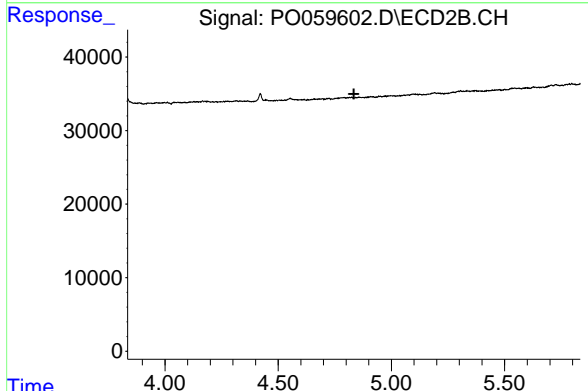
#22 AR-1248-2  
 R.T.: 0.000 min  
 Exp R.T. : 4.794 min  
 Response: 0  
 Conc: N.D.



#23 AR-1248-3

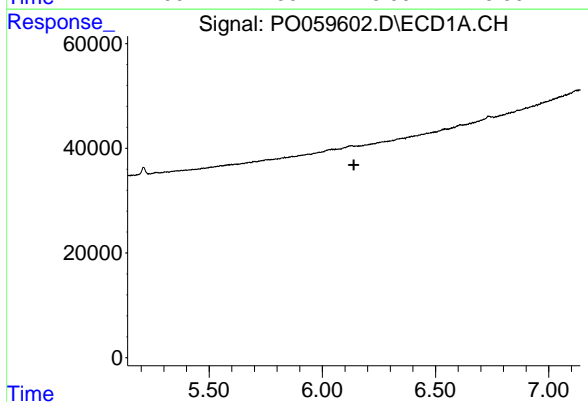
R.T.: 5.752 min  
 Delta R.T.: -0.016 min  
 Response: 1333  
 Conc: 0.80 ng/ml

**Instrument :**  
 ECD\_O  
**ClientSampleId :**  
 DEWATERING-BOX-082019-2



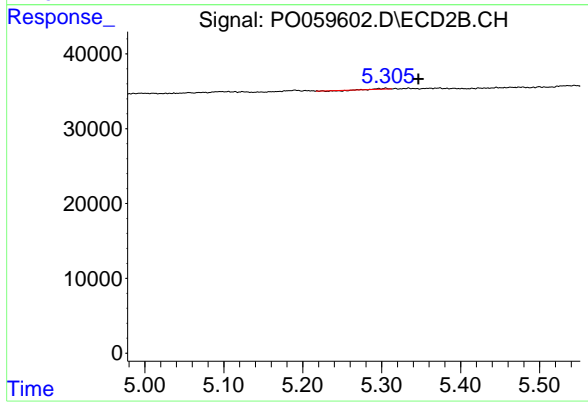
#23 AR-1248-3

R.T.: 0.000 min  
 Exp R.T. : 4.835 min  
 Response: 0  
 Conc: N.D.



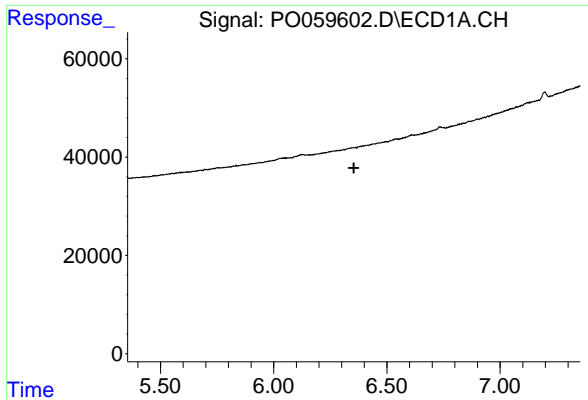
#26 AR-1254-1

R.T.: 6.129 min  
 Delta R.T.: -0.010 min  
 Response: -2741  
 Conc: N.D.



#26 AR-1254-1

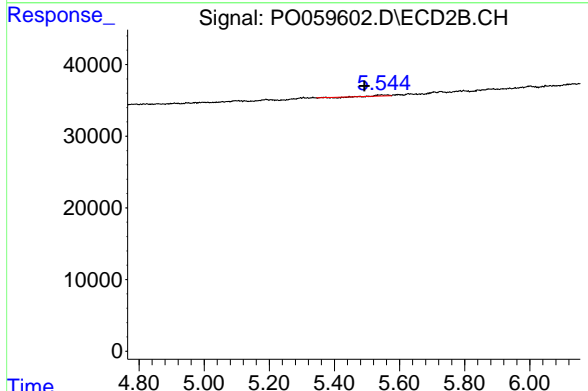
R.T.: 5.305 min  
 Delta R.T.: -0.041 min  
 Response: 127  
 Conc: 0.05 ng/ml



#27 AR-1254-2

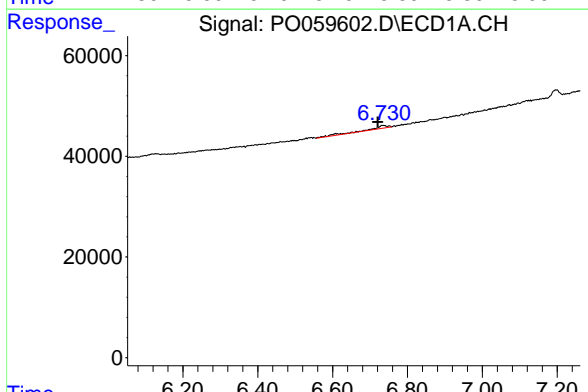
R.T.: 0.000 min  
 Exp R.T.: 6.355 min  
 Response: 0  
 Conc: N.D.

Instrument :  
 ECD\_O  
 ClientSampled :  
 DEWATERING-BOX-082019-2



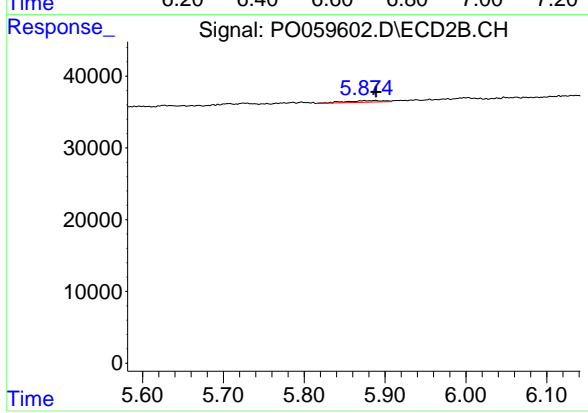
#27 AR-1254-2

R.T.: 5.544 min  
 Delta R.T.: 0.052 min  
 Response: 2363  
 Conc: 1.13 ng/ml



#28 AR-1254-3

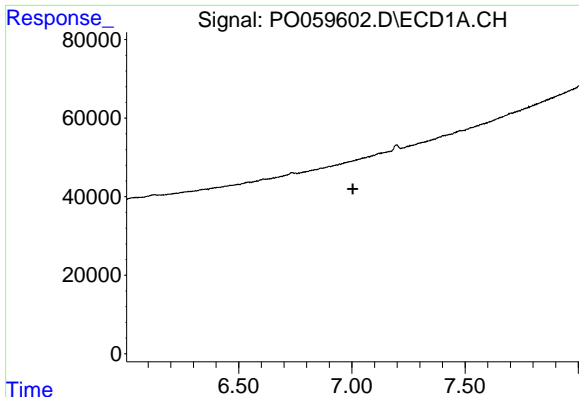
R.T.: 6.735 min  
 Delta R.T.: 0.014 min  
 Response: 20160  
 Conc: 5.68 ng/ml



#28 AR-1254-3

R.T.: 5.888 min  
 Delta R.T.: 0.000 min  
 Response: 7457  
 Conc: 2.22 ng/ml

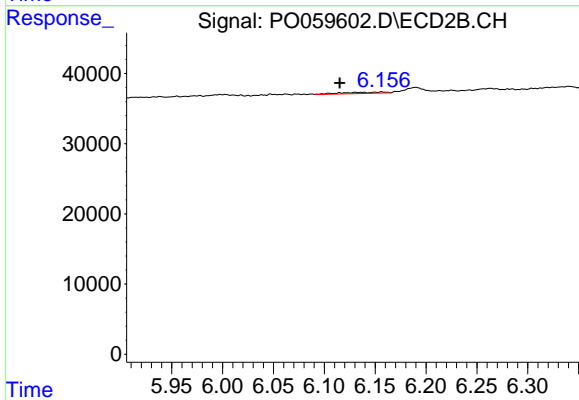




#29 AR-1254-4

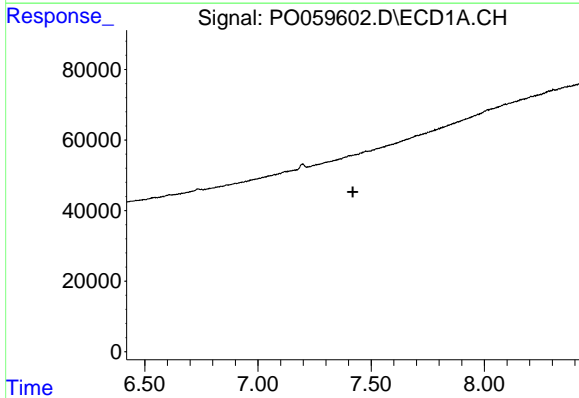
R.T.: 0.000 min  
 Exp R.T. : 7.005 min  
 Response: 0  
 Conc: N.D.

Instrument :  
 ECD\_O  
 ClientSampleId :  
 DEWATERING-BOX-082019-2



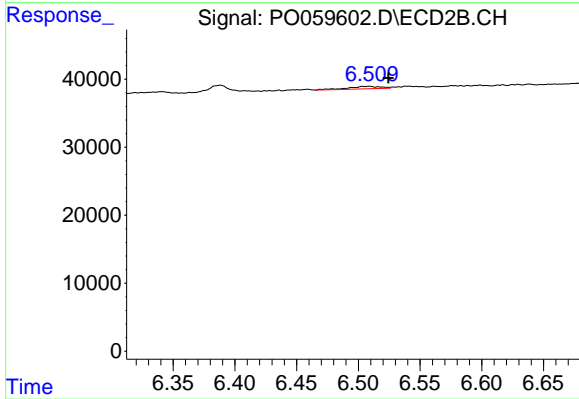
#29 AR-1254-4

R.T.: 6.156 min  
 Delta R.T.: 0.041 min  
 Response: 5855  
 Conc: 2.84 ng/ml



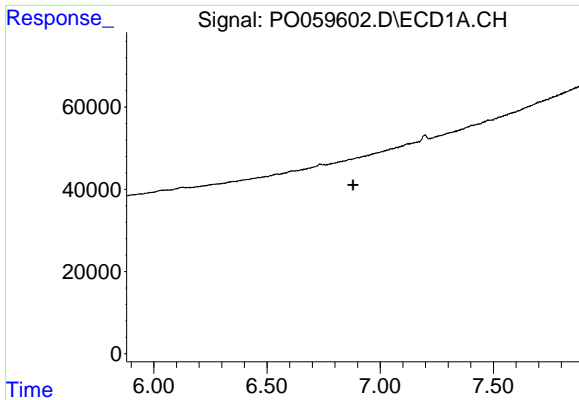
#30 AR-1254-5

R.T.: 0.000 min  
 Exp R.T. : 7.419 min  
 Response: 0  
 Conc: N.D.



#30 AR-1254-5

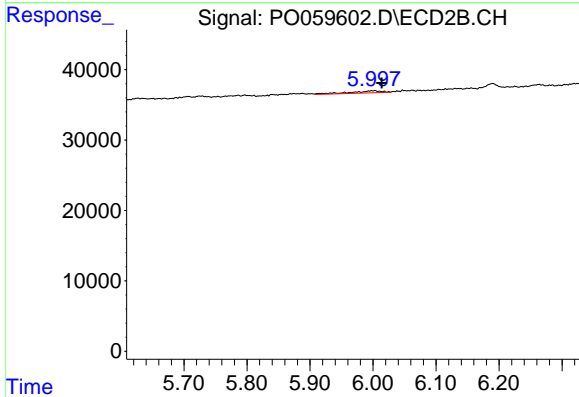
R.T.: 6.509 min  
 Delta R.T.: -0.015 min  
 Response: 6844  
 Conc: 2.20 ng/ml



#31 AR-1260-1

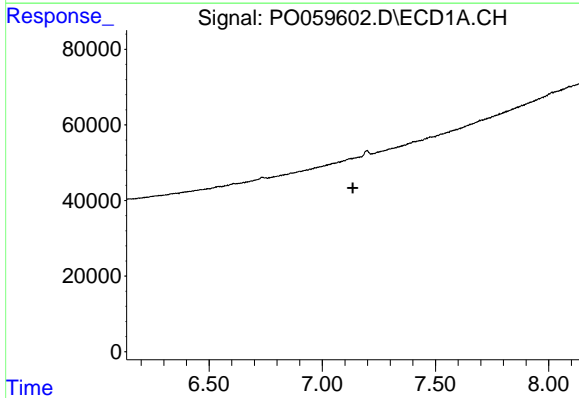
R.T.: 0.000 min  
 Exp R.T.: 6.880 min  
 Response: 0  
 Conc: N.D.

Instrument :  
 ECD\_O  
 ClientSampleId :  
 DEWATERING-BOX-082019-2



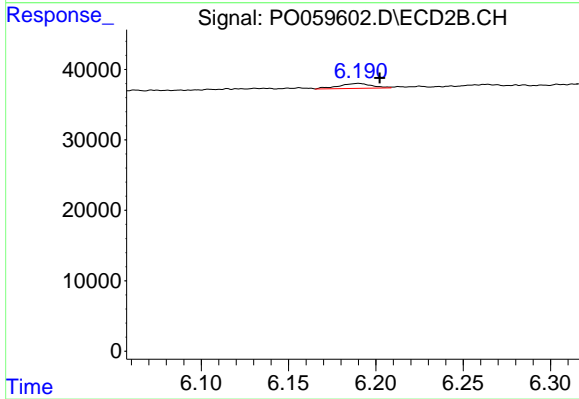
#31 AR-1260-1

R.T.: 6.003 min  
 Delta R.T.: -0.011 min  
 Response: 10779  
 Conc: 4.73 ng/ml



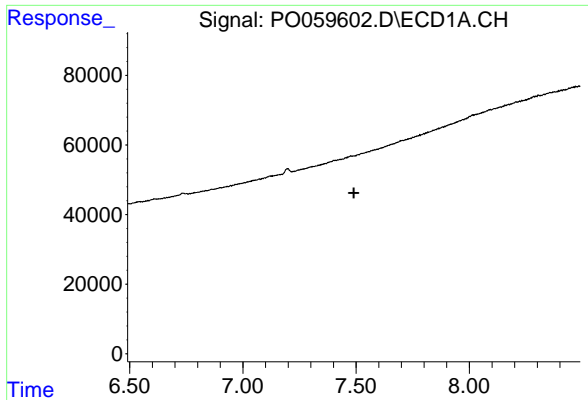
#32 AR-1260-2

R.T.: 7.197 min  
 Delta R.T.: 0.062 min  
 Response: -15208  
 Conc: N.D.



#32 AR-1260-2

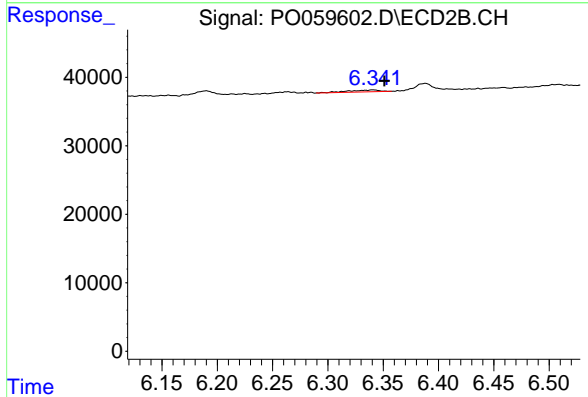
R.T.: 6.190 min  
 Delta R.T.: -0.012 min  
 Response: 9081  
 Conc: 3.10 ng/ml



#33 AR-1260-3

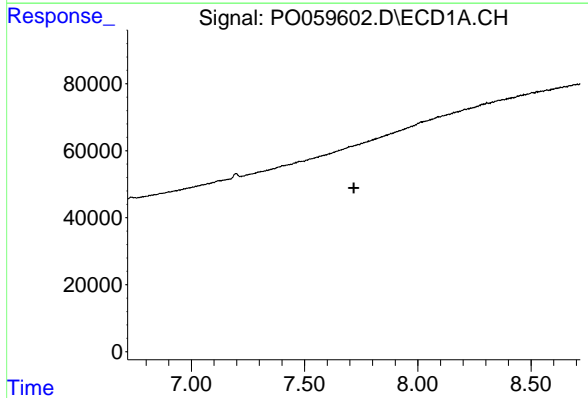
R.T.: 0.000 min  
 Exp R.T. : 7.490 min  
 Response: 0  
 Conc: N.D.

Instrument :  
 ECD\_O  
 ClientSampleId :  
 DEWATERING-BOX-082019-2



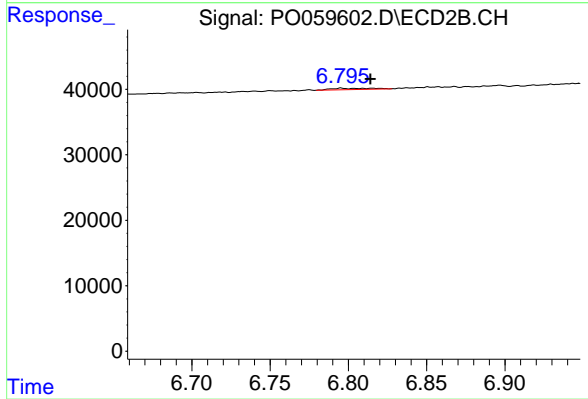
#33 AR-1260-3

R.T.: 6.341 min  
 Delta R.T.: -0.010 min  
 Response: 5365  
 Conc: 2.03 ng/ml



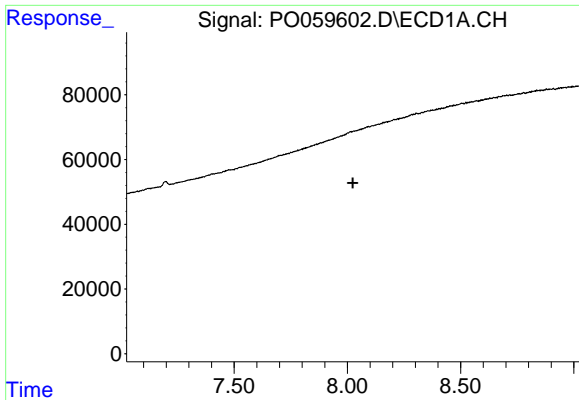
#34 AR-1260-4

R.T.: 0.000 min  
 Exp R.T. : 7.717 min  
 Response: 0  
 Conc: N.D.



#34 AR-1260-4

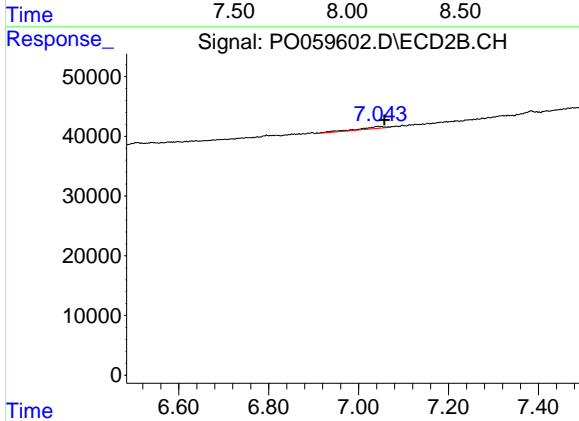
R.T.: 6.796 min  
 Delta R.T.: -0.018 min  
 Response: 3701  
 Conc: 1.64 ng/ml



#35 AR-1260-5

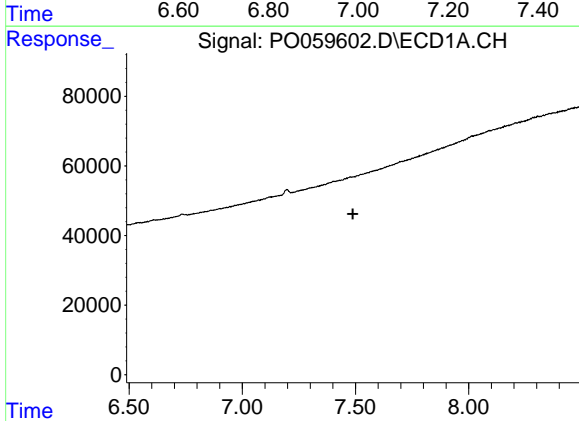
R.T.: 0.000 min  
 Exp R.T. : 8.024 min  
 Response: 0  
 Conc: N.D.

**Instrument :**  
 ECD\_O  
**ClientSampleId :**  
 DEWATERING-BOX-082019-2



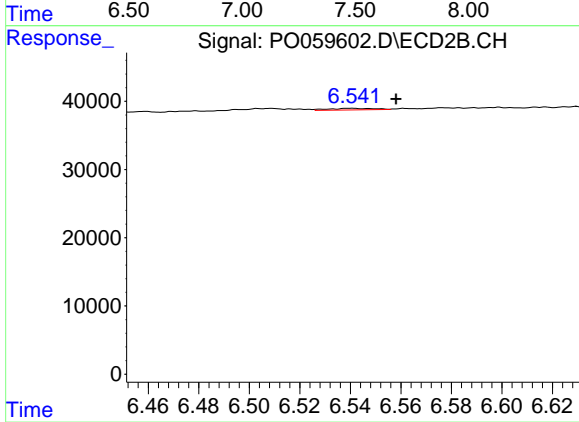
#35 AR-1260-5

R.T.: 7.043 min  
 Delta R.T.: -0.015 min  
 Response: 14072  
 Conc: 2.56 ng/ml



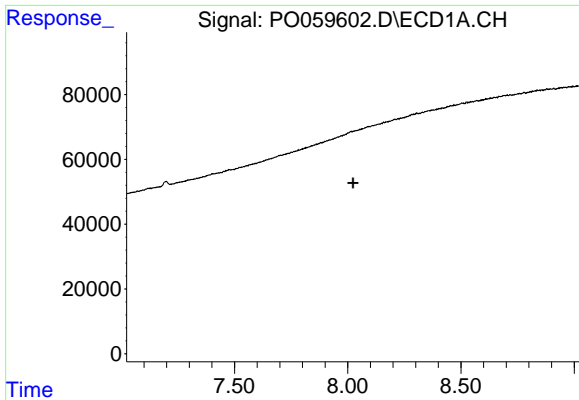
#36 AR-1262-1

R.T.: 0.000 min  
 Exp R.T. : 7.489 min  
 Response: 0  
 Conc: N.D.



#36 AR-1262-1

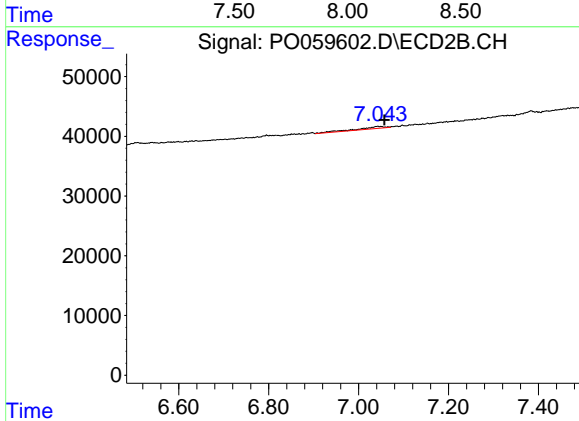
R.T.: 6.540 min  
 Delta R.T.: -0.018 min  
 Response: 3019  
 Conc: 0.81 ng/ml



#37 AR-1262-2

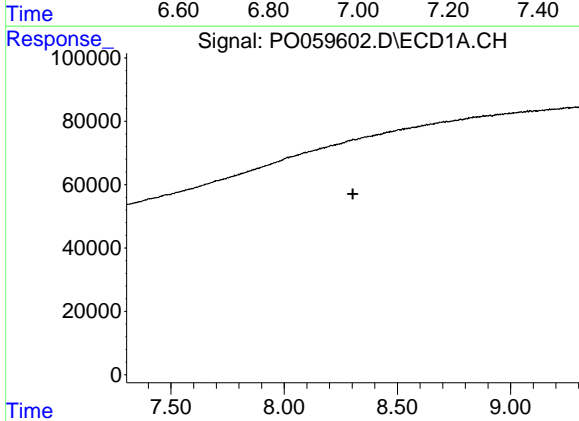
R.T.: 0.000 min  
 Exp R.T. : 8.023 min  
 Response: 0  
 Conc: N.D.

**Instrument :**  
 ECD\_O  
**ClientSampleId :**  
 DEWATERING-BOX-082019-2



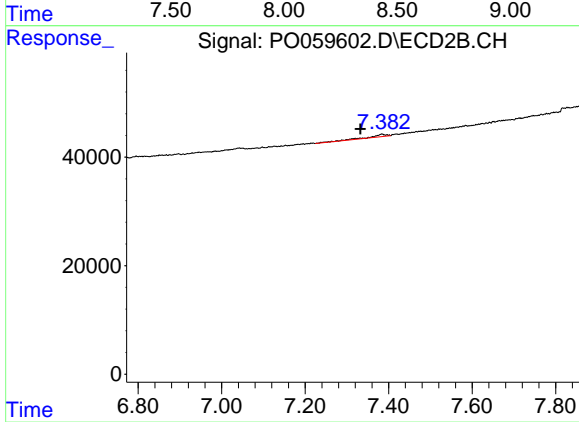
#37 AR-1262-2

R.T.: 7.043 min  
 Delta R.T.: -0.015 min  
 Response: 14072  
 Conc: 2.39 ng/ml



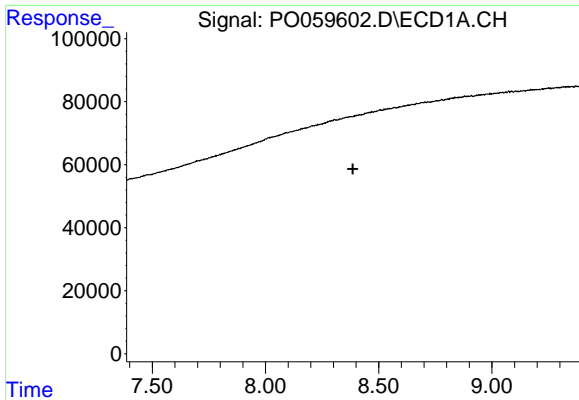
#38 AR-1262-3

R.T.: 0.000 min  
 Exp R.T. : 8.303 min  
 Response: 0  
 Conc: N.D.



#38 AR-1262-3

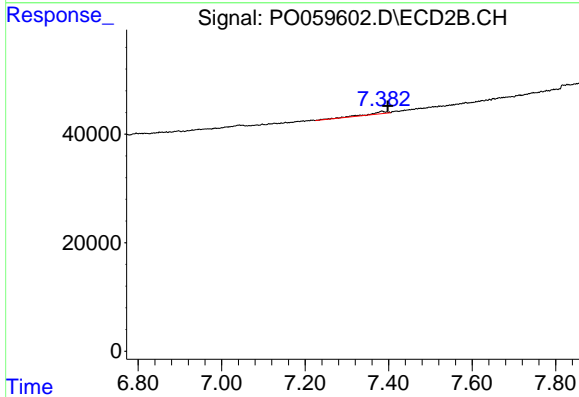
R.T.: 7.384 min  
 Delta R.T.: 0.051 min  
 Response: 12603  
 Conc: 4.96 ng/ml



#39 AR-1262-4

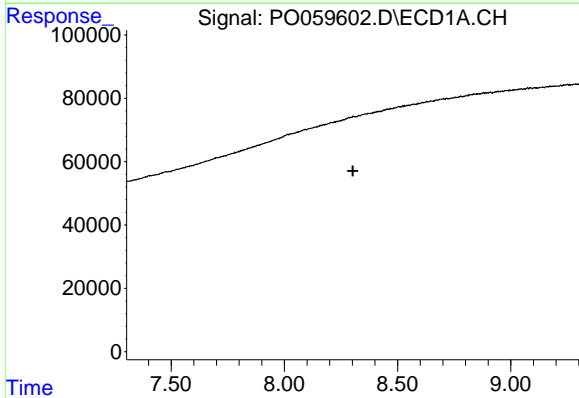
R.T.: 0.000 min  
 Exp R.T. : 8.386 min  
 Response: 0  
 Conc: N.D.

**Instrument :**  
 ECD\_O  
**ClientSampleId :**  
 DEWATERING-BOX-082019-2



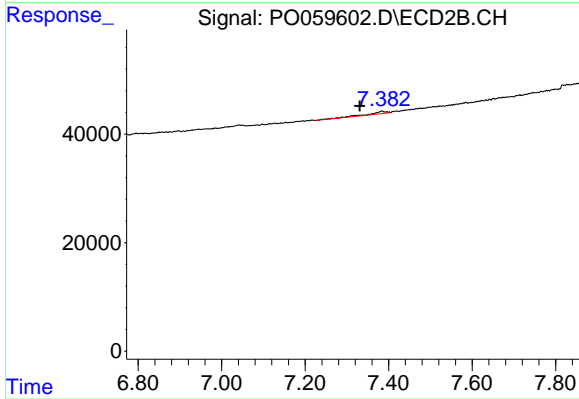
#39 AR-1262-4

R.T.: 7.384 min  
 Delta R.T.: -0.014 min  
 Response: 12603  
 Conc: 2.85 ng/ml



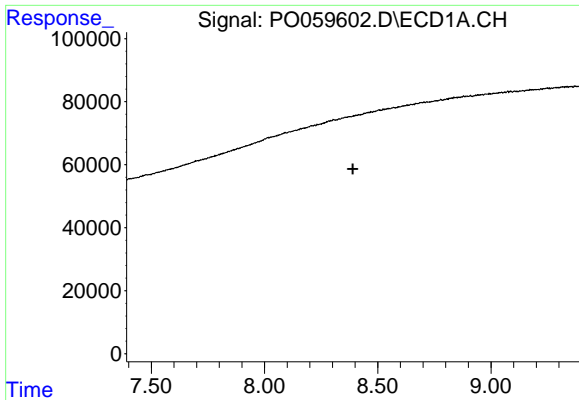
#41 AR-1268-1

R.T.: 0.000 min  
 Exp R.T. : 8.302 min  
 Response: 0  
 Conc: N.D.



#41 AR-1268-1

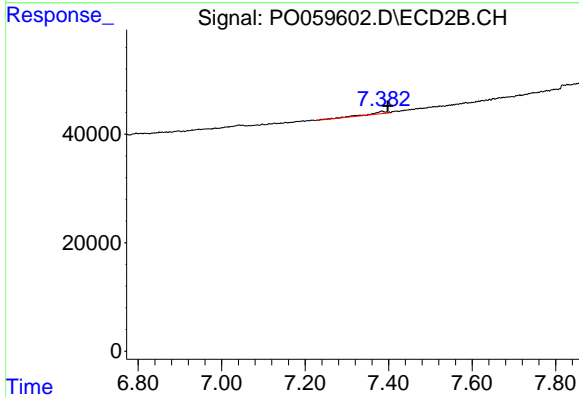
R.T.: 7.384 min  
 Delta R.T.: 0.053 min  
 Response: 12603  
 Conc: 1.77 ng/ml



#42 AR-1268-2

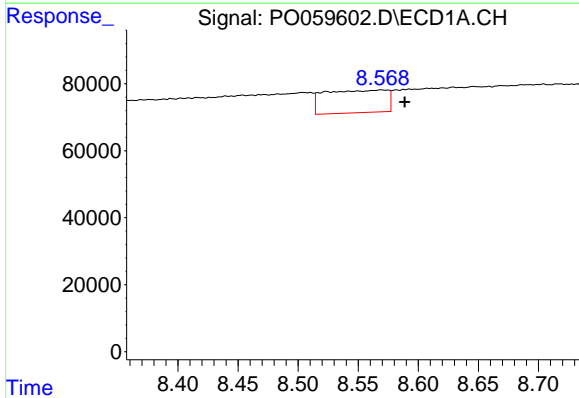
R.T.: 0.000 min  
 Exp R.T.: 8.390 min  
 Response: 0  
 Conc: N.D.

**Instrument :**  
 ECD\_O  
**ClientSampled :**  
 DEWATERING-BOX-082019-2



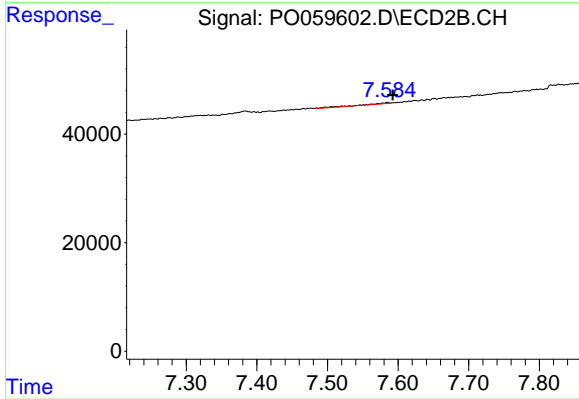
#42 AR-1268-2

R.T.: 7.384 min  
 Delta R.T.: -0.014 min  
 Response: 12603  
 Conc: 1.95 ng/ml



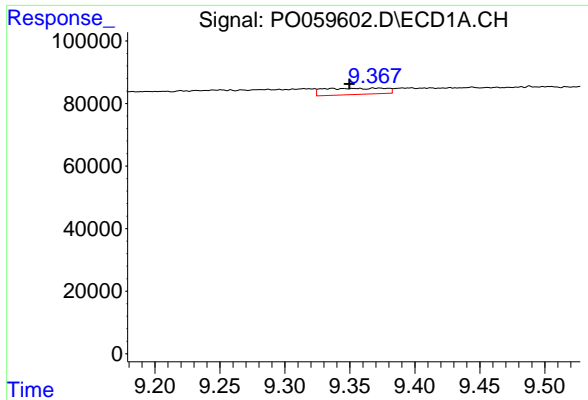
#43 AR-1268-3

R.T.: 8.570 min  
 Delta R.T.: -0.019 min  
 Response: 243453  
 Conc: 34.54 ng/ml



#43 AR-1268-3

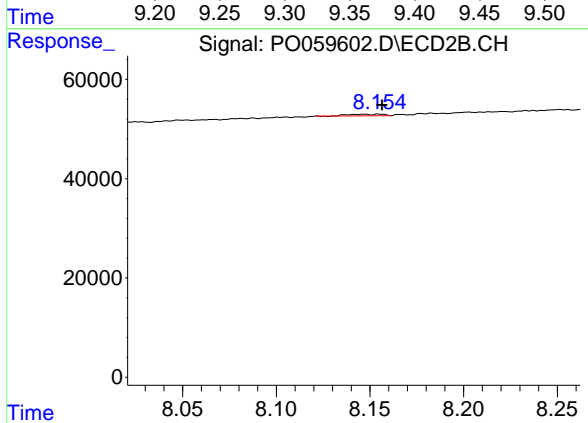
R.T.: 7.585 min  
 Delta R.T.: -0.008 min  
 Response: 4652  
 Conc: 0.85 ng/ml



#45 AR-1268-5

R.T.: 9.336 min  
 Delta R.T.: -0.014 min  
 Response: 66206  
 Conc: 3.59 ng/ml

**Instrument :**  
 ECD\_O  
**ClientSampleId :**  
 DEWATERING-BOX-082019-2



#45 AR-1268-5

R.T.: 8.155 min  
 Delta R.T.: -0.002 min  
 Response: 3947  
 Conc: 0.27 ng/ml