

Data Path : Z:\pestpcbsrv\HPCHEM1\ECD_O\Data\P0083123\
 Data File : P0097583.D
 Signal(s) : Signal #1: ECD1A.ch Signal #2: ECD2B.ch
 Acq On : 31 Aug 2023 15:46
 Operator : YP/AJ
 Sample : 04232-03
 Misc :
 ALS Vial : 13 Sample Multiplier: 1

Instrument :
 ECD_O
 ClientSampleId :

Integration File signal 1: autoint1.e
 Integration File signal 2: autoint2.e
 Quant Time: Sep 01 01:24:09 2023
 Quant Method : Z:\pestpcbsrv\HPCHEM1\ECD_O\methods\P0082823.M
 Quant Title : GC EXTRACTABLES
 QLast Update : Tue Aug 29 10:29:21 2023
 Response via : Initial Calibration
 Integrator: ChemStation

Volume Inj. : 2 µl
 Signal #1 Phase : ZB-MR1 Signal #2 Phase: ZB-MR2
 Signal #1 Info : 30Mx0.32mmx 0.50µ Signal #2 Info : 30M x 0.32mm x 0.25µm

Compound	RT#1	RT#2	Resp#1	Resp#2	ng/ml	ng/ml

System Monitoring Compounds						
1) SA Tetrachlo...	4.428	3.631	445.4E6	5998966	133.460	8.892 #
2) SA Decachlor...	10.306	8.672	54291616	17389873	29.581	30.294
Target Compounds						
3) L1 AR-1016-1	5.624	4.723	33867.0E6	4073.0E6	376264.744	187102.588 #
4) L1 AR-1016-2	5.649	4.742	46731.9E6	5412.2E6	336790.272	179363.345 #
5) L1 AR-1016-3	5.713	4.919	52775.0E6	3023.0E6	582068.868	187145.058 #
6) L1 AR-1016-4	5.812	4.962	35365.0E6	1754.3E6	510061.606	122259.341 #
7) L1 AR-1016-5	6.109	5.176	9264.3E6	2357.4E6	130429.145	128902.350
8) L2 AR-1221-1	4.654	3.844	950.8E6	209.5E6	23623.542	25588.098
9) L2 AR-1221-2	4.744	3.931	1294.6E6	267.7E6	43068.790	46188.509
10) L2 AR-1221-3	4.821	4.007	7019.4E6	1484.9E6	78797.958	80753.353
11) L3 AR-1232-1	4.821	4.007	7019.4E6	1484.9E6	95171.670	98558.388
12) L3 AR-1232-2	5.356	4.742	12597.0E6	5412.2E6	328718.623	387688.073
13) L3 AR-1232-3	5.649	4.919	46731.9E6	3023.0E6	722552.666	430414.568 #
14) L3 AR-1232-4	5.812	5.004	35365.0E6	2115.8E6	1110222.281	299240.889 #
15) L3 AR-1232-5	5.904	5.176	22502.9E6	2357.4E6	764772.432	299497.935 #
16) L4 AR-1242-1	5.624	4.723	33867.0E6	4073.0E6	418158.751	211142.402 #
17) L4 AR-1242-2	5.649	4.742	46731.9E6	5412.2E6	374193.277	198834.930 #
18) L4 AR-1242-3	5.713	4.919	52775.0E6	3023.0E6	641879.357	210653.633 #
19) L4 AR-1242-4	5.812	5.004	35365.0E6	2115.8E6	563363.455	133586.754 #
20) L4 AR-1242-5	6.556	5.530	2413.8E6	1065.2E6	38377.650	60359.189 #
21) L5 AR-1248-1	5.624	4.723	33867.0E6	4073.0E6	574227.037	296394.563 #
22) L5 AR-1248-2	5.904	4.962	22502.9E6	1754.3E6	227521.522	79116.531 #
23) L5 AR-1248-3	6.109	5.004	9264.3E6	2115.8E6	89417.974	92021.111
24) L5 AR-1248-4	6.517	5.176	2677.0E6	2357.4E6	29264.048	86870.516 #
25) L5 AR-1248-5	6.556	5.571	2413.8E6	595.8E6	23776.967	26355.654
26) L6 AR-1254-1	6.489	5.530	2969.8E6	1065.2E6	27012.563	27599.988
27) L6 AR-1254-2	6.713	5.678	3106.1E6	473.2E6	19060.375	13893.118 #
28) L6 AR-1254-3	7.081	6.099	1413.3E6	1385.7E6	8678.017	26115.151 #
29) L6 AR-1254-4	7.369	6.313	919.8E6	135.9E6	9437.034	4984.077 #
30) L6 AR-1254-5	7.793	6.732	13025.8E6	3402.6E6	115351.000	77176.315 #
31) L7 AR-1260-1	7.247	6.215	7488.7E6	1955.3E6	58668.141	52351.915
32) L7 AR-1260-2	7.507	6.404	10273.7E6	2740.4E6	75394.331	64763.041
33) L7 AR-1260-3	7.871	6.557	7787.6E6	2585.7E6	73677.624	61773.644
34) L7 AR-1260-4	8.099	7.032	9490.7E6	2439.7E6	83896.415	75433.052
35) L7 AR-1260-5	8.430	7.274	16050.2E6	5243.5E6	85383.154	79414.186
36) L8 AR-1262-1	7.871	6.825	7787.6E6	1210.4E6	51750.897	60314.535
37) L8 AR-1262-2	8.430	7.032	16050.2E6	2439.7E6	73292.908	55840.340
38) L8 AR-1262-3	8.762	7.559	10607.9E6	971.9E6	68422.845	31185.038 #
39) L8 AR-1262-4	8.839	7.622	2251.9E6	3812.4E6	18064.600	67777.844 #
40) L8 AR-1262-5	9.521	8.120	2991.0E6	943.4E6	43492.418	40103.211
41) L9 AR-1268-1	8.762	7.559	10607.9E6	971.9E6	37350.165	10153.267 #

Data Path : Z:\pestpcbsrv\HPCHEM1\ECD_0\Data\P0083123\
 Data File : P0097583.D
 Signal(s) : Signal #1: ECD1A.ch Signal #2: ECD2B.ch
 Acq On : 31 Aug 2023 15:46
 Operator : YP/AJ
 Sample : 04232-03
 Misc :
 ALS Vial : 13 Sample Multiplier: 1

Instrument :
 ECD_0
 ClientSampleId :

Integration File signal 1: autoint1.e
 Integration File signal 2: autoint2.e
 Quant Time: Sep 01 01:24:09 2023
 Quant Method : Z:\pestpcbsrv\HPCHEM1\ECD_0\methods\P0082823.M
 Quant Title : GC EXTRACTABLES
 QLast Update : Tue Aug 29 10:29:21 2023
 Response via : Initial Calibration
 Integrator: ChemStation

Volume Inj. : 2 µl
 Signal #1 Phase : ZB-MR1 Signal #2 Phase: ZB-MR2
 Signal #1 Info : 30Mx0.32mmx 0.50µ Signal #2 Info : 30M x 0.32mm x 0.25µm

	Compound	RT#1	RT#2	Resp#1	Resp#2	ng/ml	ng/ml
42)	L9 AR-1268-2	8.839	7.622	2251.9E6	3812.4E6	8863.238	45991.274 #
43)	L9 AR-1268-3	9.081	7.924	119.0E6	30496048	527.702	1539.121 #
44)	L9 AR-1268-4	9.521	8.120	2991.0E6	943.4E6	38859.321	36507.572
45)	L9 AR-1268-5	9.953	8.414	524.6E6	170.5E6	759.631	747.972

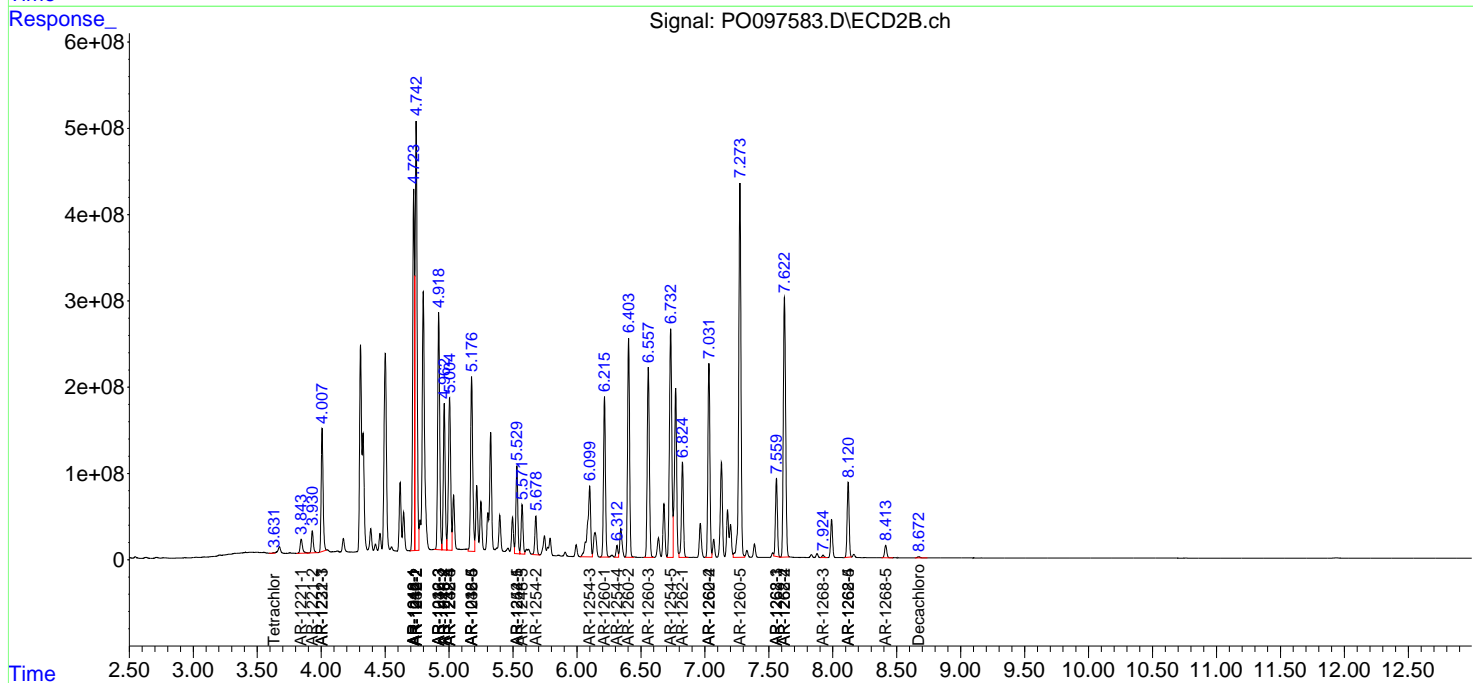
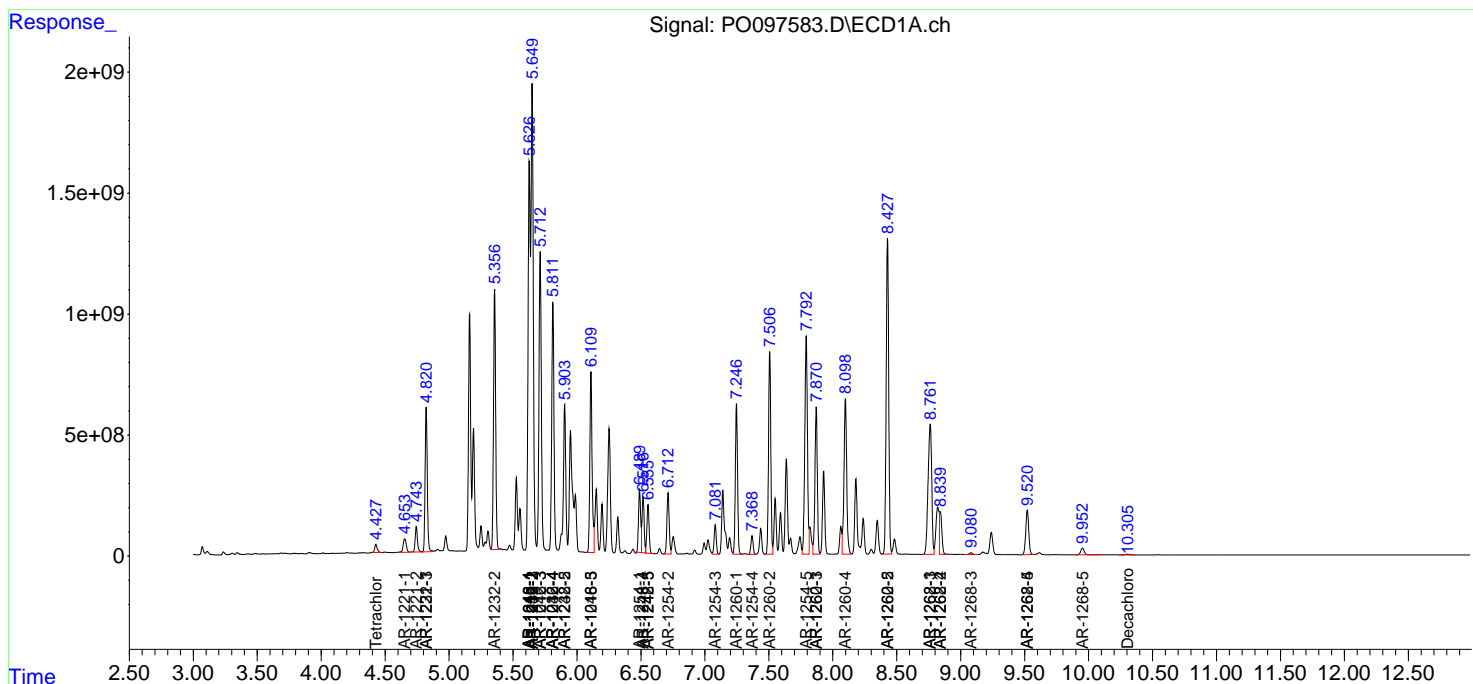
(f)=RT Delta > 1/2 Window (#)=Amounts differ by > 25% (m)=manual int.

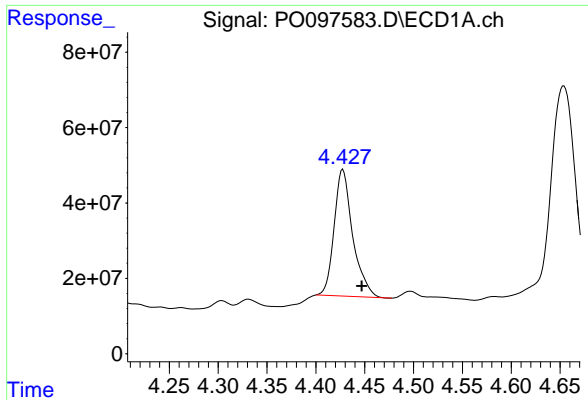
Data Path : Z:\pestpcbsrv\HPCHEM1\ECD_O\Data\PO083123\
 Data File : PO097583.D
 Signal(s) : Signal #1: ECD1A.ch Signal #2: ECD2B.ch
 Acq On : 31 Aug 2023 15:46
 Operator : YP/AJ
 Sample : 04232-03
 Misc :
 ALS Vial : 13 Sample Multiplier: 1

Instrument :
 ECD_O
 ClientSampleId :

Integration File signal 1: autoint1.e
 Integration File signal 2: autoint2.e
 Quant Time: Sep 01 01:24:09 2023
 Quant Method : Z:\pestpcbsrv\HPCHEM1\ECD_O\methods\PO082823.M
 Quant Title : GC EXTRACTABLES
 QLast Update : Tue Aug 29 10:29:21 2023
 Response via : Initial Calibration
 Integrator: ChemStation

Volume Inj. : 2 µl
 Signal #1 Phase : ZB-MR1 Signal #2 Phase: ZB-MR2
 Signal #1 Info : 30Mx0.32mmx 0.50µ Signal #2 Info : 30M x 0.32mm x 0.25µm

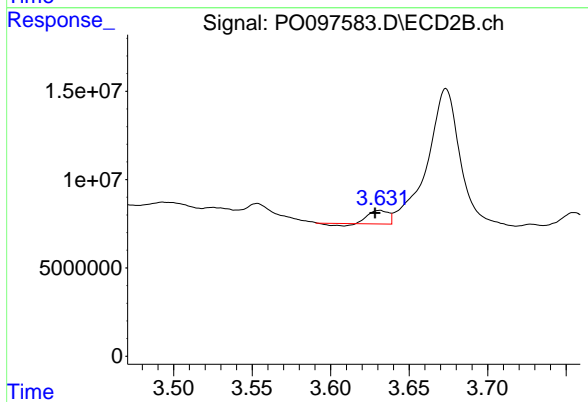




#1 Tetrachloro-m-xylene

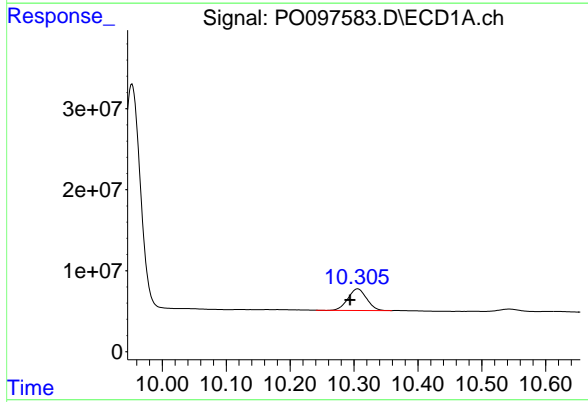
R.T.: 4.428 min
 Delta R.T.: -0.019 min
 Response: 445434856
 Conc: 133.46 ng/ml

Instrument :
 ECD_O
 ClientSampleId :



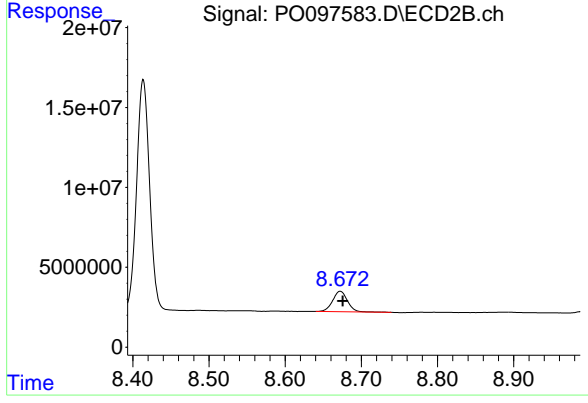
#1 Tetrachloro-m-xylene

R.T.: 3.631 min
 Delta R.T.: 0.003 min
 Response: 5998966
 Conc: 8.89 ng/ml



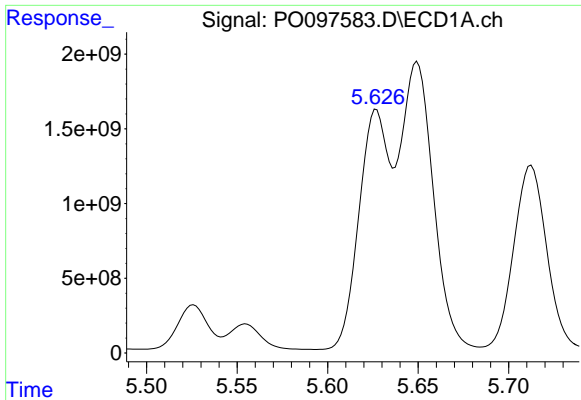
#2 Decachlorobiphenyl

R.T.: 10.306 min
 Delta R.T.: 0.012 min
 Response: 54291616
 Conc: 29.58 ng/ml



#2 Decachlorobiphenyl

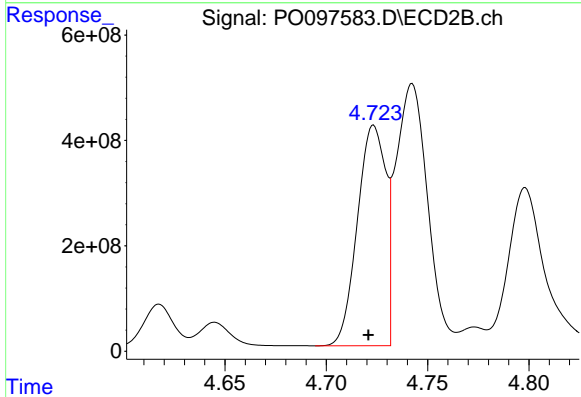
R.T.: 8.672 min
 Delta R.T.: -0.003 min
 Response: 17389873
 Conc: 30.29 ng/ml



#3 AR-1016-1

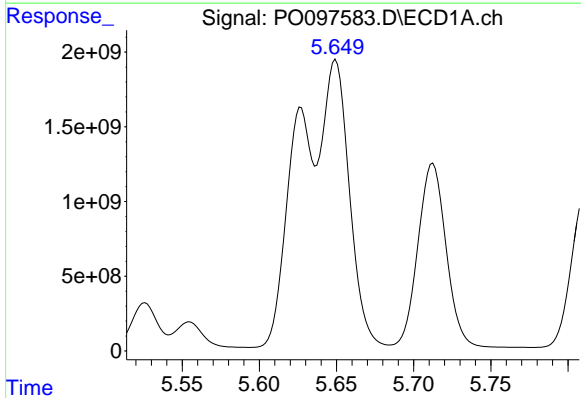
R.T.: 5.624 min
 Delta R.T.: 0.000 min
 Response: 33866953664
 Conc: 376264.74 ng

Instrument :
 ECD_O
 ClientSampleId :



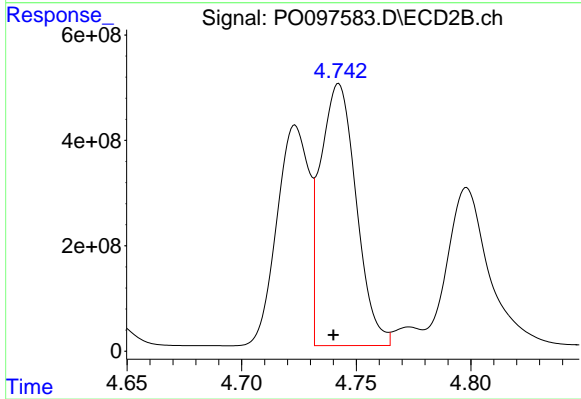
#3 AR-1016-1

R.T.: 4.723 min
 Delta R.T.: 0.003 min
 Response: 4072976327
 Conc: 187102.59 ng/ml



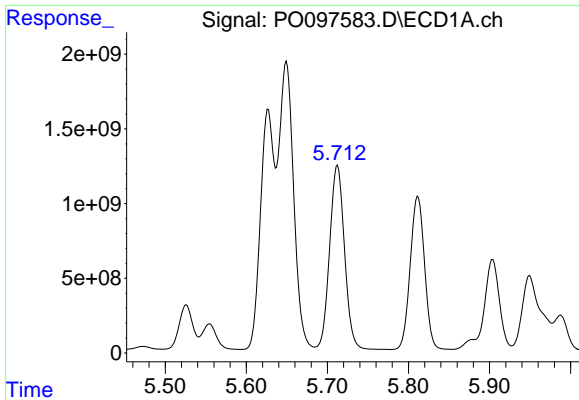
#4 AR-1016-2

R.T.: 5.649 min
 Delta R.T.: 0.003 min
 Response: 46731936988
 Conc: 336790.27 ng/ml



#4 AR-1016-2

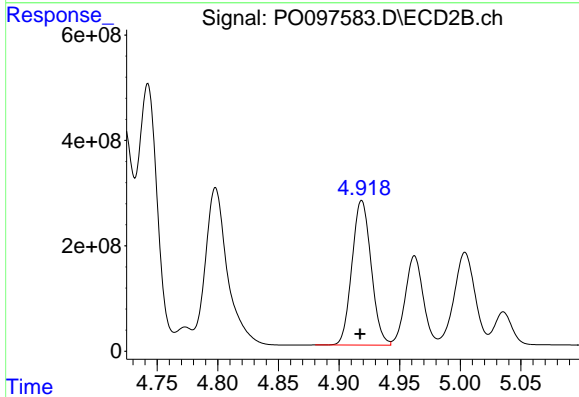
R.T.: 4.742 min
 Delta R.T.: 0.002 min
 Response: 5412213375
 Conc: 179363.35 ng/ml



#5 AR-1016-3

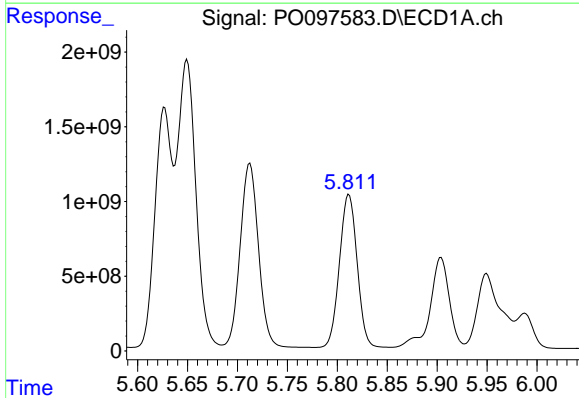
R.T.: 5.713 min
 Delta R.T.: 0.004 min
 Response: 52774951684
 Conc: 582068.87 ng

Instrument :
 ECD_O
 ClientSampleId :



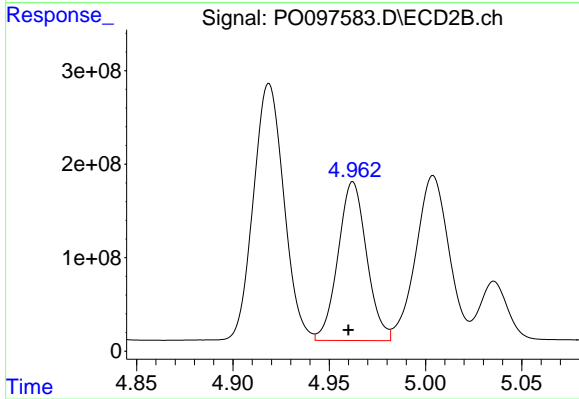
#5 AR-1016-3

R.T.: 4.919 min
 Delta R.T.: 0.001 min
 Response: 3023025681
 Conc: 187145.06 ng/ml



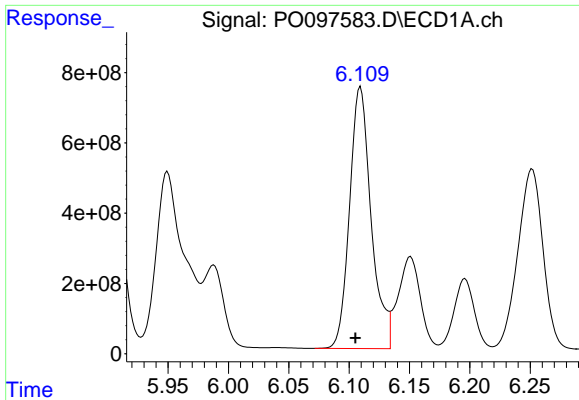
#6 AR-1016-4

R.T.: 5.812 min
 Delta R.T.: 0.005 min
 Response: 35364968304
 Conc: 510061.61 ng/ml



#6 AR-1016-4

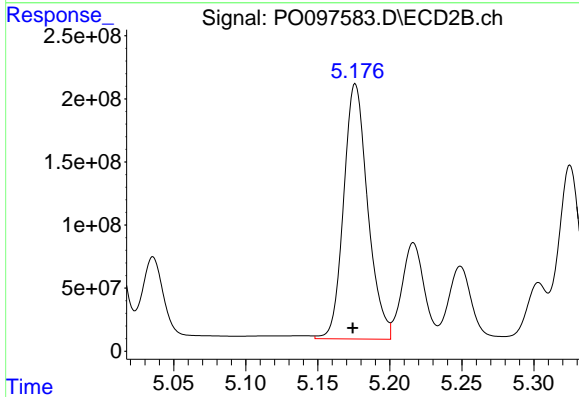
R.T.: 4.962 min
 Delta R.T.: 0.002 min
 Response: 1754328613
 Conc: 122259.34 ng/ml



#7 AR-1016-5

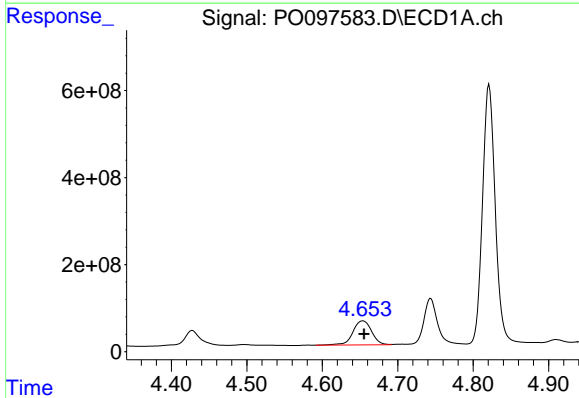
R.T.: 6.109 min
 Delta R.T.: 0.004 min
 Response: 9264283900
 Conc: 130429.15 ng

Instrument :
 ECD_O
 ClientSampleId :



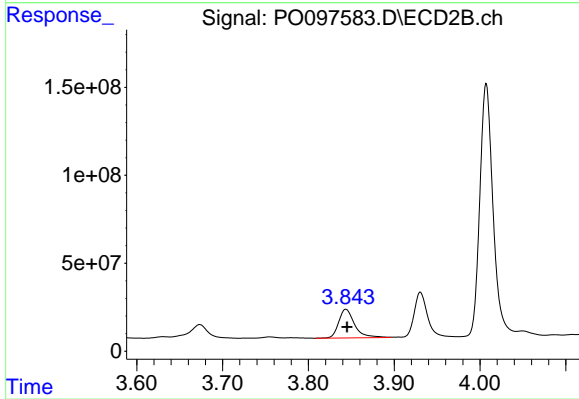
#7 AR-1016-5

R.T.: 5.176 min
 Delta R.T.: 0.002 min
 Response: 2357394412
 Conc: 128902.35 ng/ml



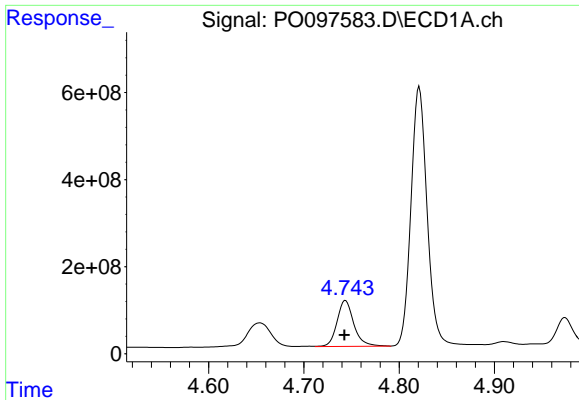
#8 AR-1221-1

R.T.: 4.654 min
 Delta R.T.: -0.001 min
 Response: 950759253
 Conc: 23623.54 ng/ml



#8 AR-1221-1

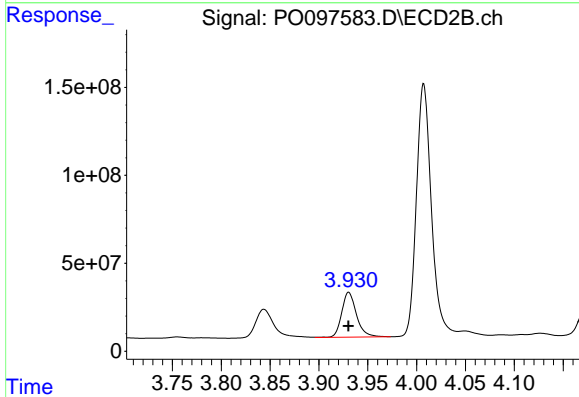
R.T.: 3.844 min
 Delta R.T.: -0.001 min
 Response: 209469717
 Conc: 25588.10 ng/ml



#9 AR-1221-2

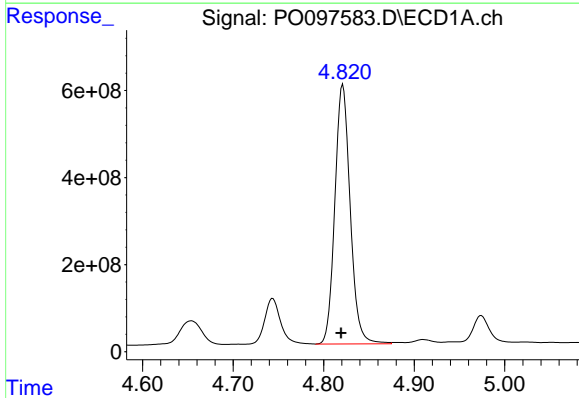
R.T.: 4.744 min
 Delta R.T.: 0.000 min
 Response: 1294619421
 Conc: 43068.79 ng/ml

Instrument :
 ECD_O
 ClientSampleId :



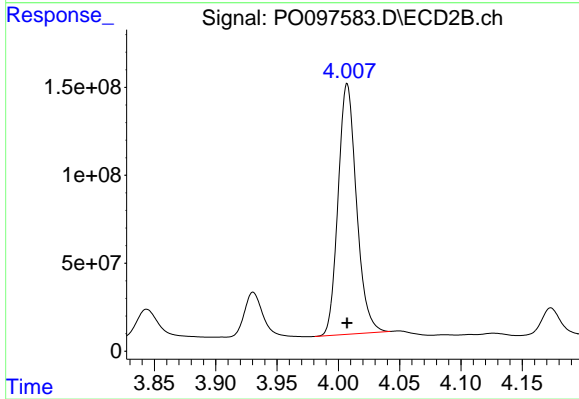
#9 AR-1221-2

R.T.: 3.931 min
 Delta R.T.: 0.000 min
 Response: 267696035
 Conc: 46188.51 ng/ml



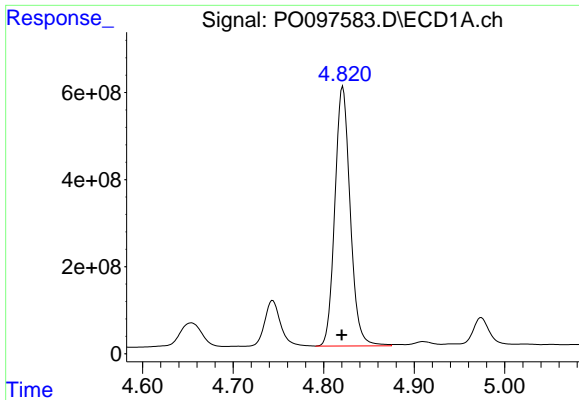
#10 AR-1221-3

R.T.: 4.821 min
 Delta R.T.: 0.002 min
 Response: 7019411878
 Conc: 78797.96 ng/ml



#10 AR-1221-3

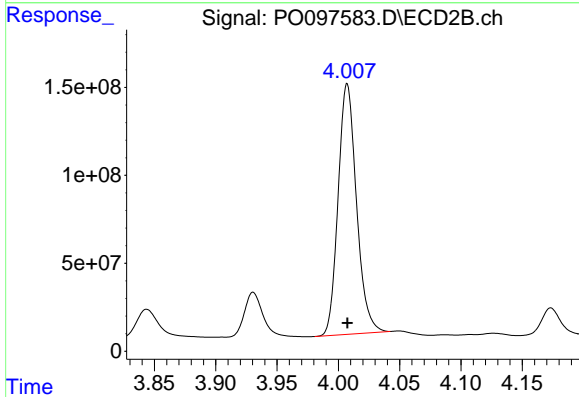
R.T.: 4.007 min
 Delta R.T.: 0.000 min
 Response: 1484896359
 Conc: 80753.35 ng/ml



#11 AR-1232-1

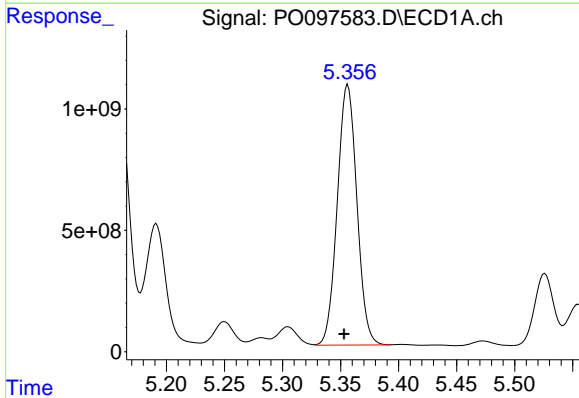
R.T.: 4.821 min
 Delta R.T.: 0.001 min
 Response: 7019411878
 Conc: 95171.67 ng/ml

Instrument :
 ECD_O
 ClientSampleId :



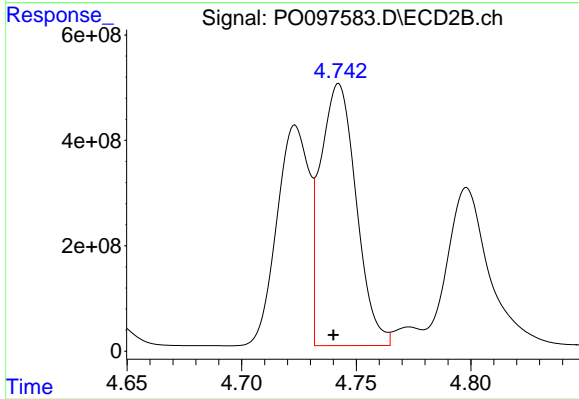
#11 AR-1232-1

R.T.: 4.007 min
 Delta R.T.: 0.000 min
 Response: 1484896359
 Conc: 98558.39 ng/ml



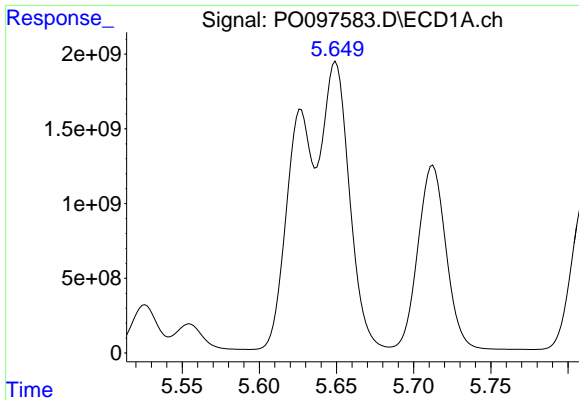
#12 AR-1232-2

R.T.: 5.356 min
 Delta R.T.: 0.003 min
 Response: 12596957603
 Conc: 328718.62 ng/ml



#12 AR-1232-2

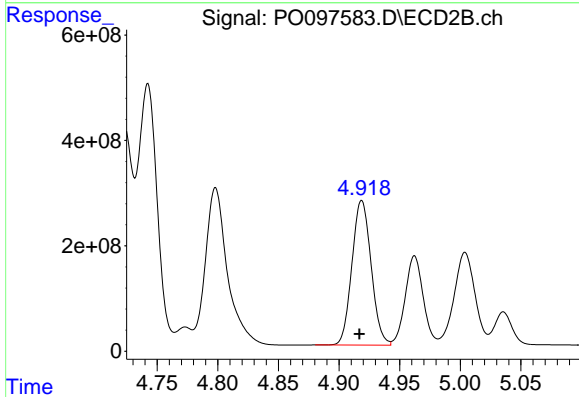
R.T.: 4.742 min
 Delta R.T.: 0.002 min
 Response: 5412213375
 Conc: 387688.07 ng/ml



#13 AR-1232-3

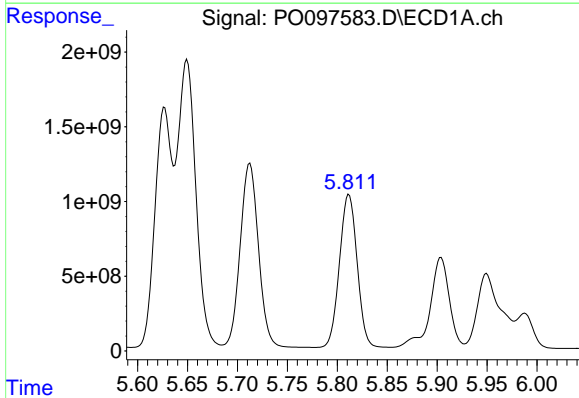
R.T.: 5.649 min
 Delta R.T.: 0.002 min
 Response: 46731936988
 Conc: 722552.67 ng

Instrument :
 ECD_O
 ClientSampleId :



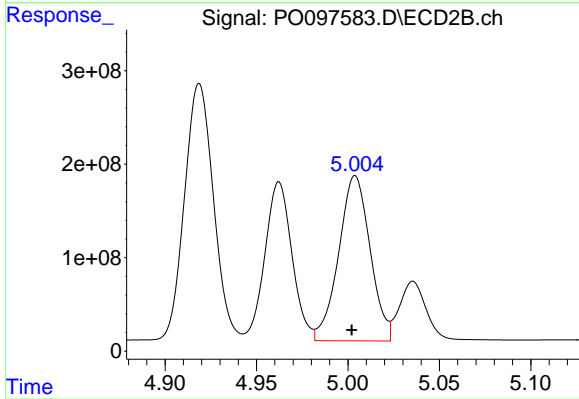
#13 AR-1232-3

R.T.: 4.919 min
 Delta R.T.: 0.002 min
 Response: 3023025681
 Conc: 430414.57 ng/ml



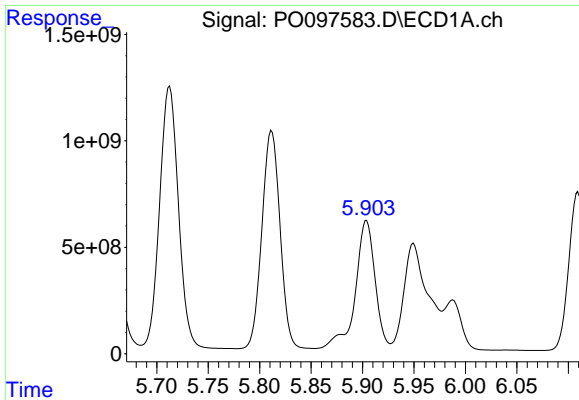
#14 AR-1232-4

R.T.: 5.812 min
 Delta R.T.: 0.004 min
 Response: 35364968304
 Conc: 1110222.28 ng/ml



#14 AR-1232-4

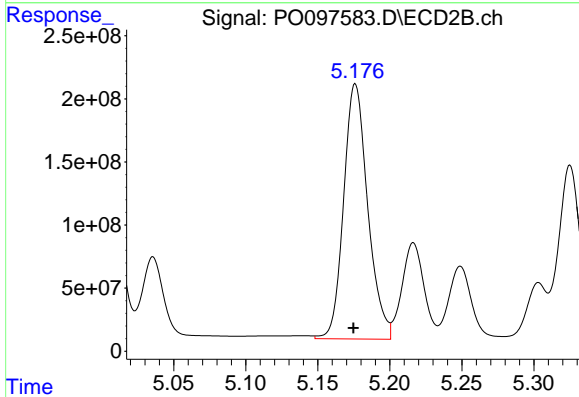
R.T.: 5.004 min
 Delta R.T.: 0.002 min
 Response: 2115803712
 Conc: 299240.89 ng/ml



#15 AR-1232-5

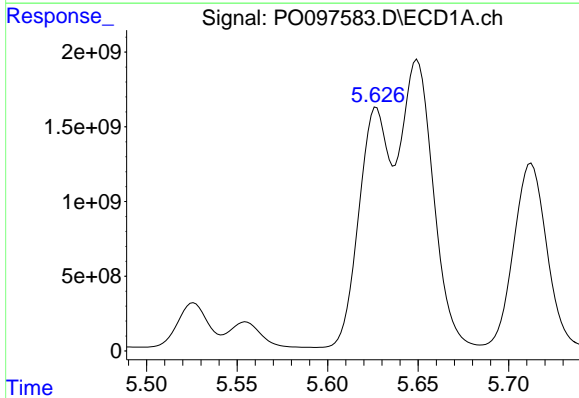
R.T.: 5.904 min
 Delta R.T.: 0.005 min
 Response: 22502872396
 Conc: 764772.43 ng/ml

Instrument :
 ECD_O
 ClientSampleId :



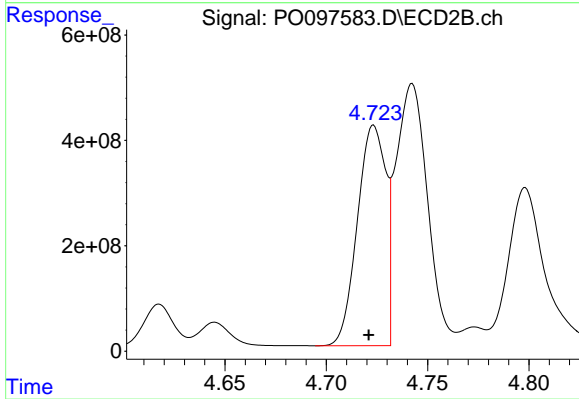
#15 AR-1232-5

R.T.: 5.176 min
 Delta R.T.: 0.001 min
 Response: 2357394412
 Conc: 299497.94 ng/ml



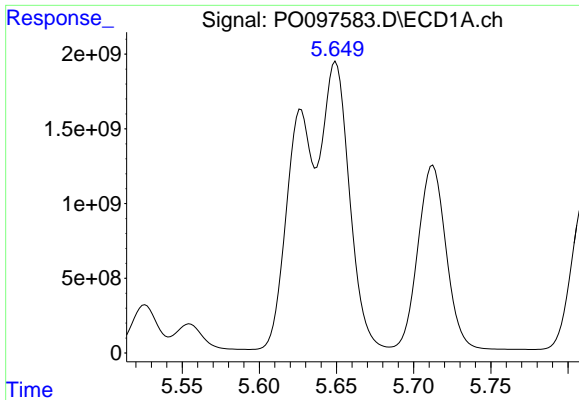
#16 AR-1242-1

R.T.: 5.624 min
 Delta R.T.: 0.000 min
 Response: 33866953664
 Conc: 418158.75 ng/ml



#16 AR-1242-1

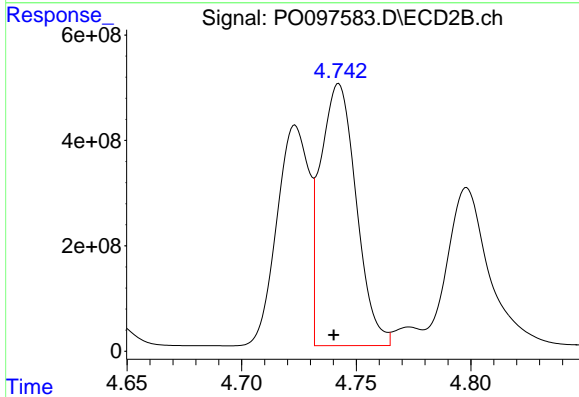
R.T.: 4.723 min
 Delta R.T.: 0.002 min
 Response: 4072976327
 Conc: 211142.40 ng/ml



#17 AR-1242-2

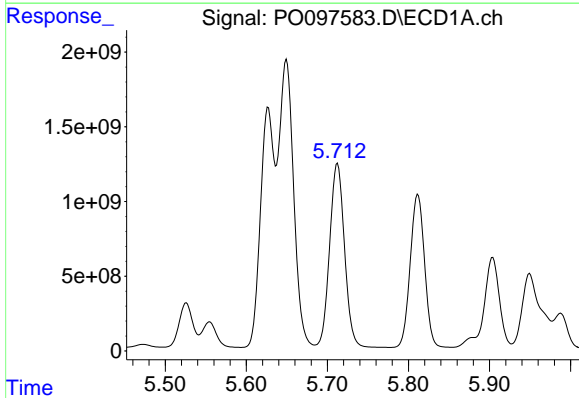
R.T.: 5.649 min
 Delta R.T.: 0.003 min
 Response: 46731936988
 Conc: 374193.28 ng

Instrument :
 ECD_O
 ClientSampleId :



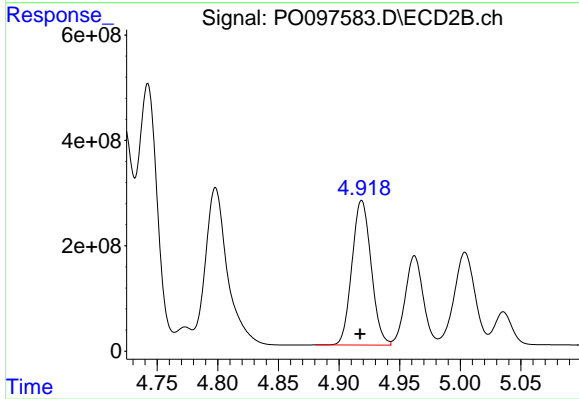
#17 AR-1242-2

R.T.: 4.742 min
 Delta R.T.: 0.002 min
 Response: 5412213375
 Conc: 198834.93 ng/ml



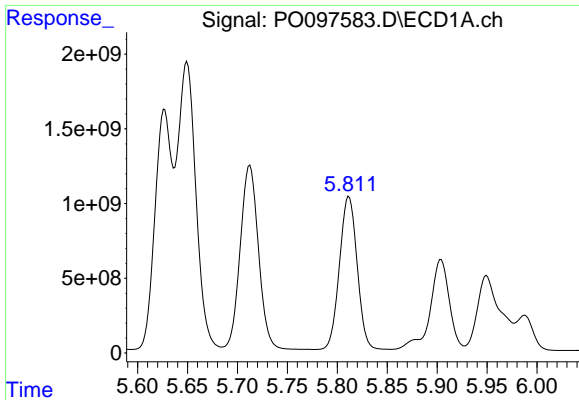
#18 AR-1242-3

R.T.: 5.713 min
 Delta R.T.: 0.004 min
 Response: 52774951684
 Conc: 641879.36 ng/ml



#18 AR-1242-3

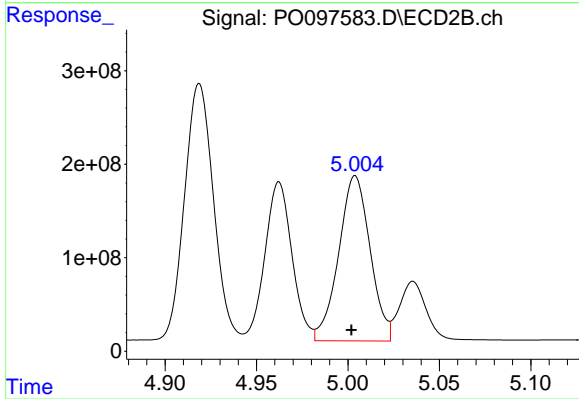
R.T.: 4.919 min
 Delta R.T.: 0.001 min
 Response: 3023025681
 Conc: 210653.63 ng/ml



#19 AR-1242-4

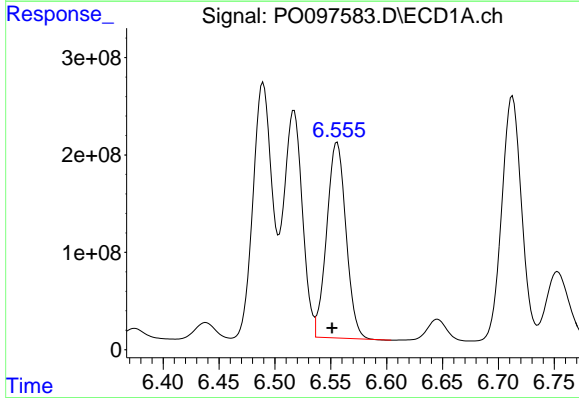
R.T.: 5.812 min
 Delta R.T.: 0.004 min
 Response: 35364968304
 Conc: 563363.46 ng

Instrument :
 ECD_O
 ClientSampleId :



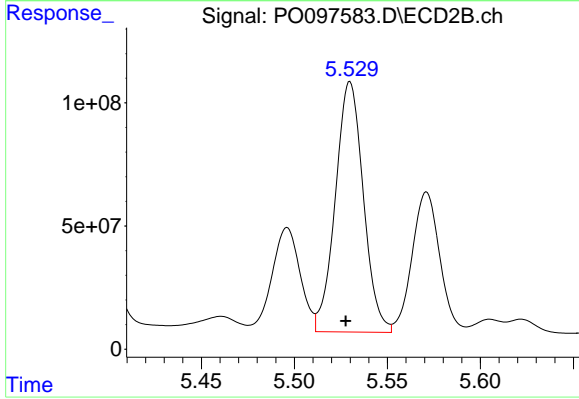
#19 AR-1242-4

R.T.: 5.004 min
 Delta R.T.: 0.002 min
 Response: 2115803712
 Conc: 133586.75 ng/ml



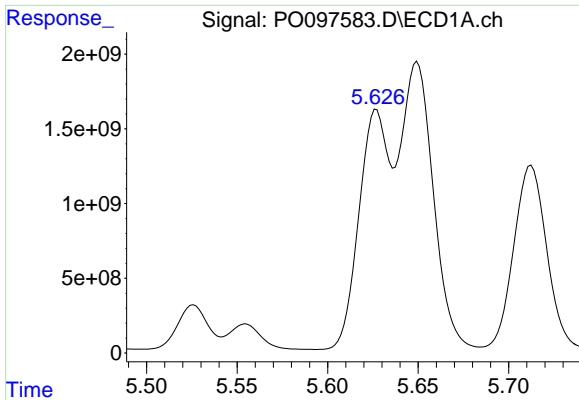
#20 AR-1242-5

R.T.: 6.556 min
 Delta R.T.: 0.004 min
 Response: 2413787877
 Conc: 38377.65 ng/ml



#20 AR-1242-5

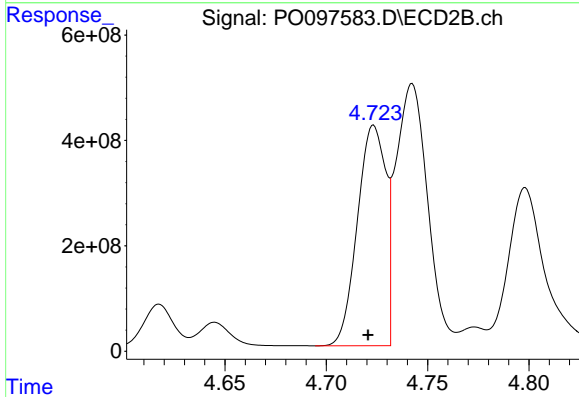
R.T.: 5.530 min
 Delta R.T.: 0.002 min
 Response: 1065232353
 Conc: 60359.19 ng/ml



#21 AR-1248-1

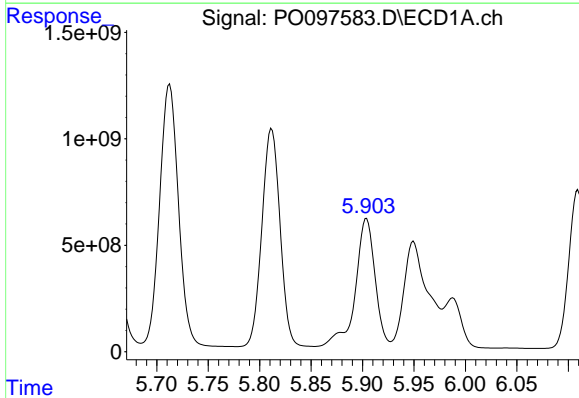
R.T.: 5.624 min
 Delta R.T.: 0.000 min
 Response: 33866953664
 Conc: 574227.04 ng

Instrument :
 ECD_O
 ClientSampleId :



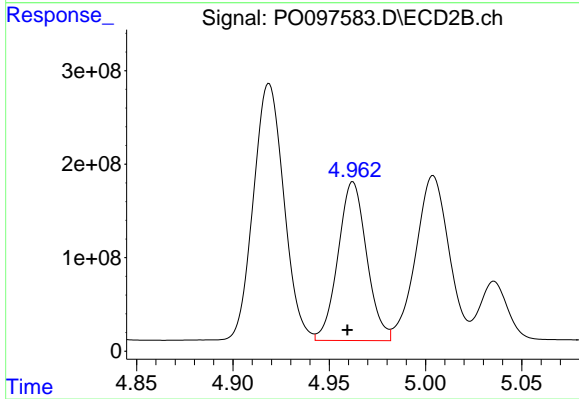
#21 AR-1248-1

R.T.: 4.723 min
 Delta R.T.: 0.003 min
 Response: 4072976327
 Conc: 296394.56 ng/ml



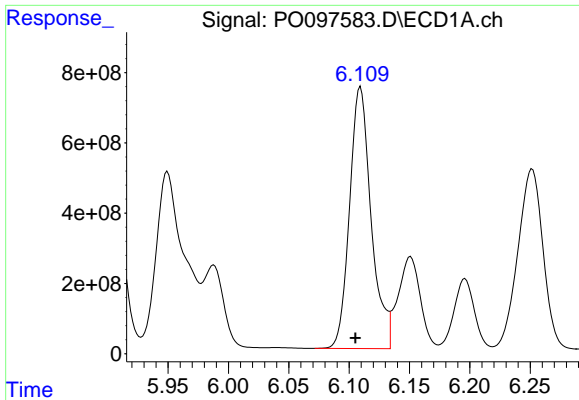
#22 AR-1248-2

R.T.: 5.904 min
 Delta R.T.: 0.004 min
 Response: 22502872396
 Conc: 227521.52 ng/ml



#22 AR-1248-2

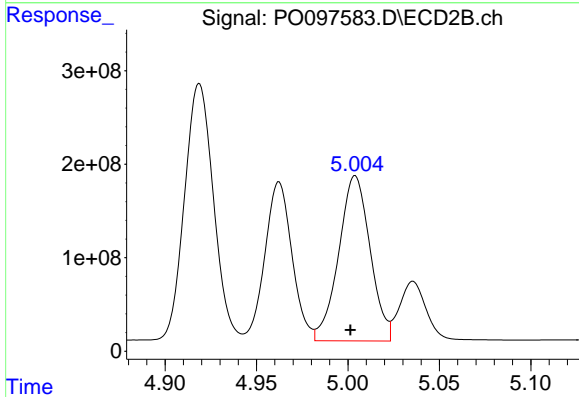
R.T.: 4.962 min
 Delta R.T.: 0.003 min
 Response: 1754328613
 Conc: 79116.53 ng/ml



#23 AR-1248-3

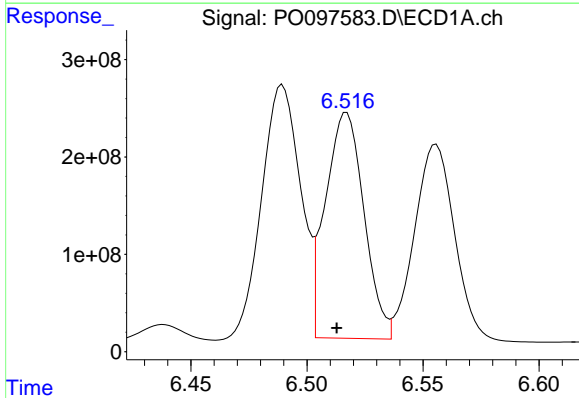
R.T.: 6.109 min
 Delta R.T.: 0.004 min
 Response: 9264283900
 Conc: 89417.97 ng/ml

Instrument :
 ECD_O
 ClientSampleId :



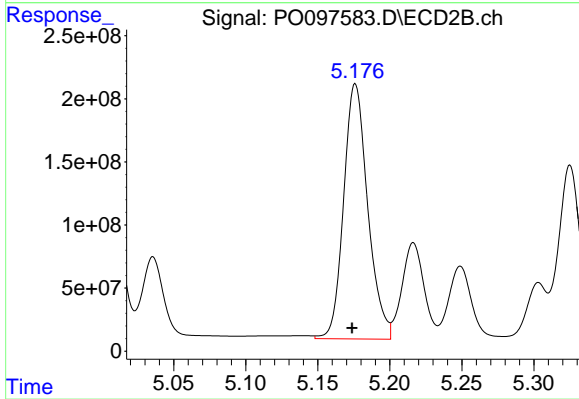
#23 AR-1248-3

R.T.: 5.004 min
 Delta R.T.: 0.003 min
 Response: 2115803712
 Conc: 92021.11 ng/ml



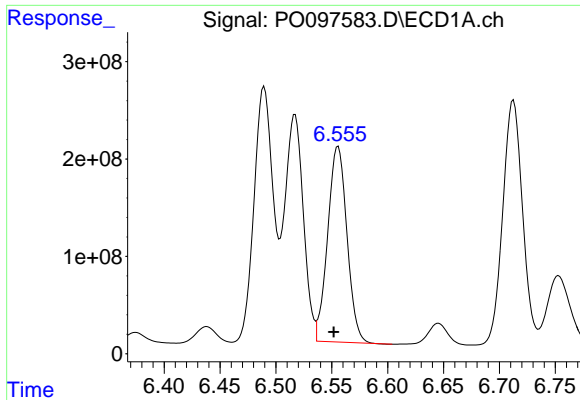
#24 AR-1248-4

R.T.: 6.517 min
 Delta R.T.: 0.004 min
 Response: 2677043246
 Conc: 29264.05 ng/ml



#24 AR-1248-4

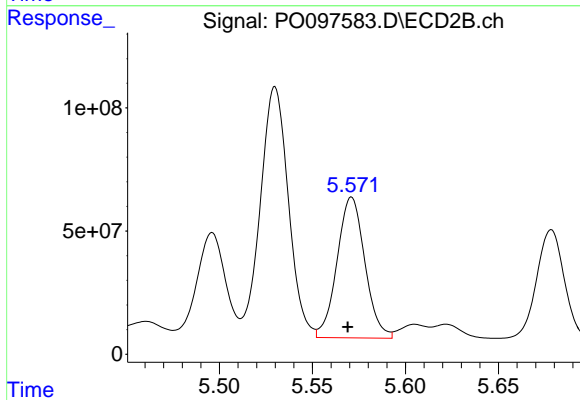
R.T.: 5.176 min
 Delta R.T.: 0.002 min
 Response: 2357394412
 Conc: 86870.52 ng/ml



#25 AR-1248-5

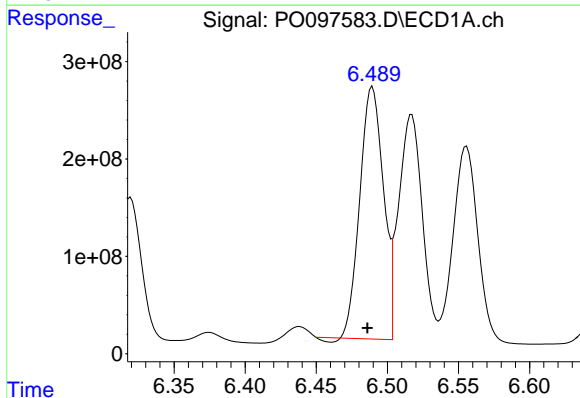
R.T.: 6.556 min
 Delta R.T.: 0.004 min
 Response: 2413787877
 Conc: 23776.97 ng/ml

Instrument :
 ECD_O
 ClientSampleId :



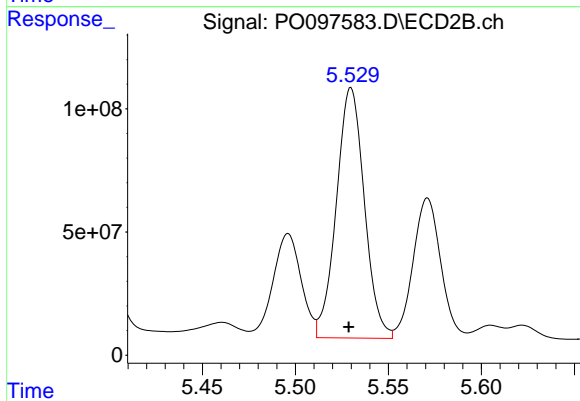
#25 AR-1248-5

R.T.: 5.571 min
 Delta R.T.: 0.002 min
 Response: 595842010
 Conc: 26355.65 ng/ml



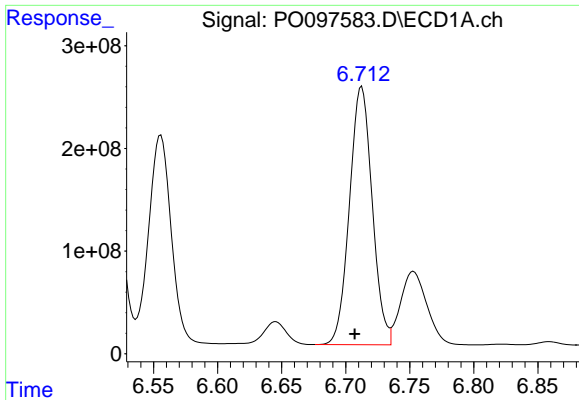
#26 AR-1254-1

R.T.: 6.489 min
 Delta R.T.: 0.003 min
 Response: 2969805729
 Conc: 27012.56 ng/ml



#26 AR-1254-1

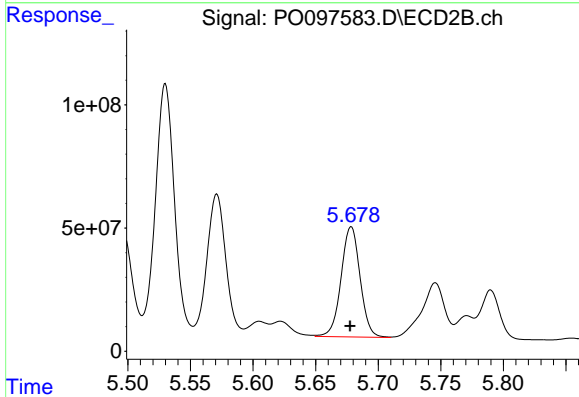
R.T.: 5.530 min
 Delta R.T.: 0.001 min
 Response: 1065232353
 Conc: 27599.99 ng/ml



#27 AR-1254-2

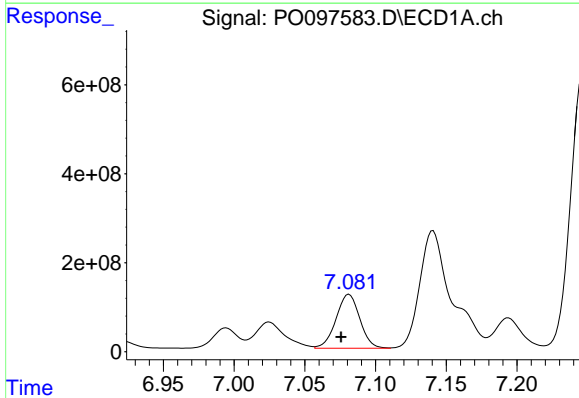
R.T.: 6.713 min
 Delta R.T.: 0.005 min
 Response: 3106084276
 Conc: 19060.38 ng/ml

Instrument :
 ECD_O
 ClientSampleId :



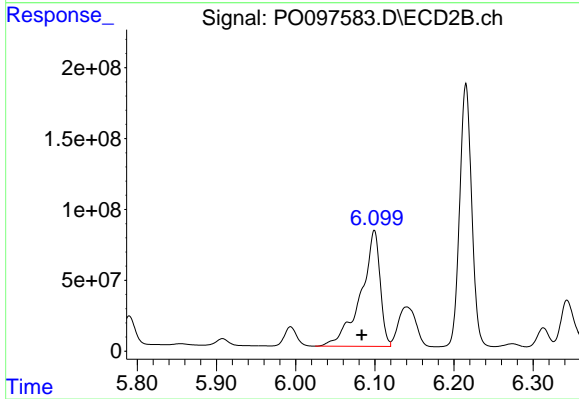
#27 AR-1254-2

R.T.: 5.678 min
 Delta R.T.: 0.000 min
 Response: 473211645
 Conc: 13893.12 ng/ml



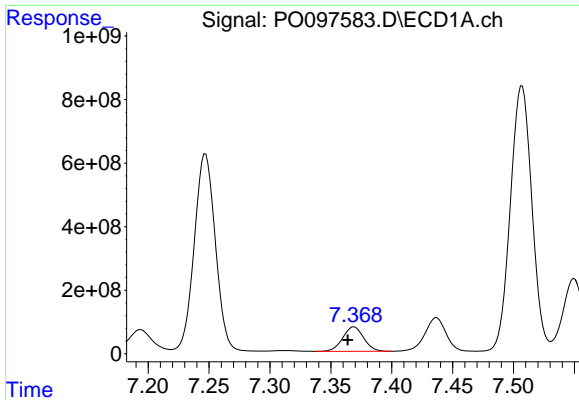
#28 AR-1254-3

R.T.: 7.081 min
 Delta R.T.: 0.006 min
 Response: 1413260936
 Conc: 8678.02 ng/ml



#28 AR-1254-3

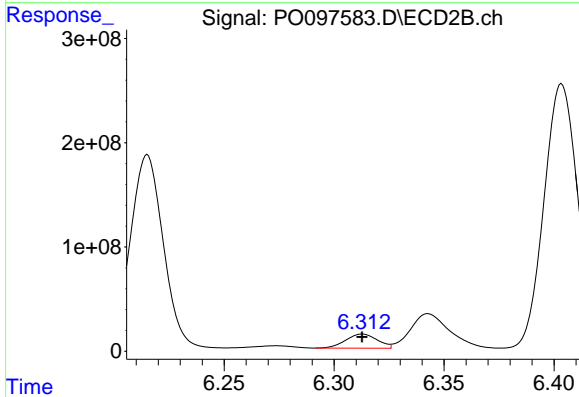
R.T.: 6.099 min
 Delta R.T.: 0.016 min
 Response: 1385654003
 Conc: 26115.15 ng/ml



#29 AR-1254-4

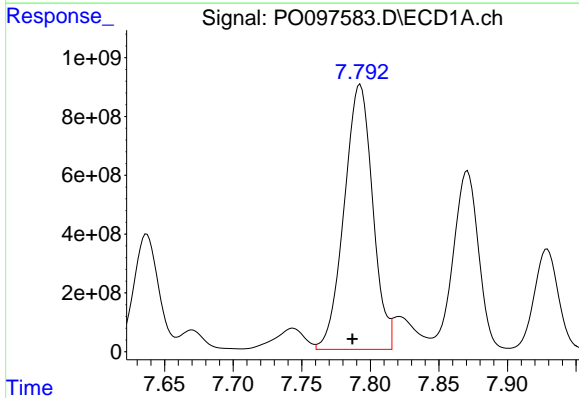
R.T.: 7.369 min
 Delta R.T.: 0.005 min
 Response: 919822876
 Conc: 9437.03 ng/ml

Instrument :
 ECD_O
 ClientSampleId :



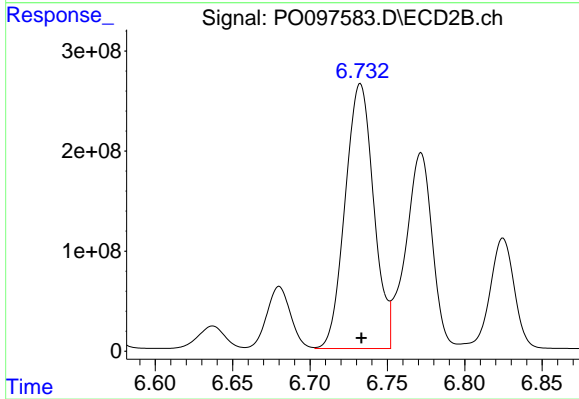
#29 AR-1254-4

R.T.: 6.313 min
 Delta R.T.: 0.000 min
 Response: 135908126
 Conc: 4984.08 ng/ml



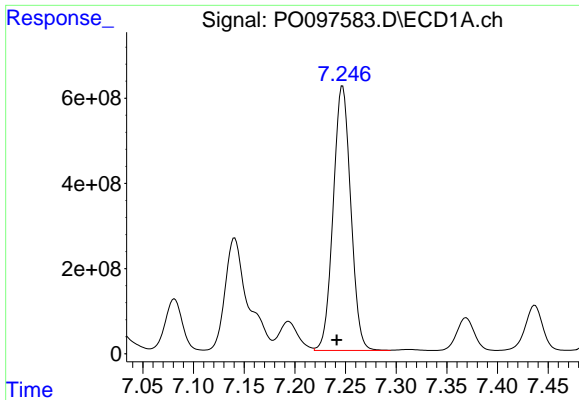
#30 AR-1254-5

R.T.: 7.793 min
 Delta R.T.: 0.006 min
 Response: 13025786824
 Conc: 115351.00 ng/ml



#30 AR-1254-5

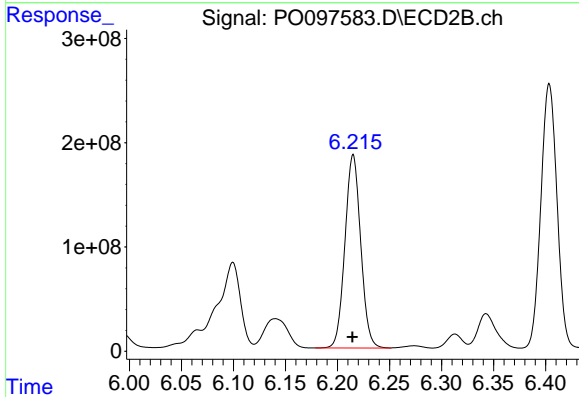
R.T.: 6.732 min
 Delta R.T.: 0.000 min
 Response: 3402628385
 Conc: 77176.32 ng/ml



#31 AR-1260-1

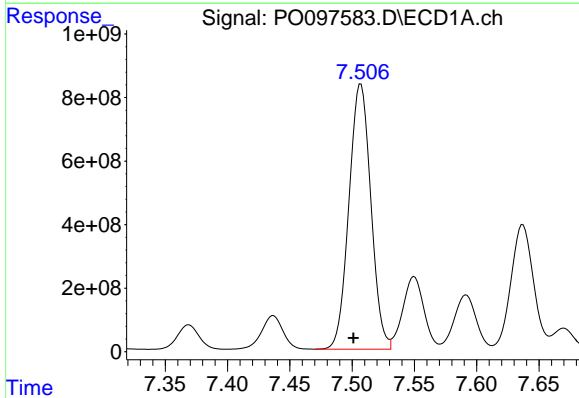
R.T.: 7.247 min
 Delta R.T.: 0.006 min
 Response: 7488733703
 Conc: 58668.14 ng/ml

Instrument :
 ECD_O
 ClientSampleId :



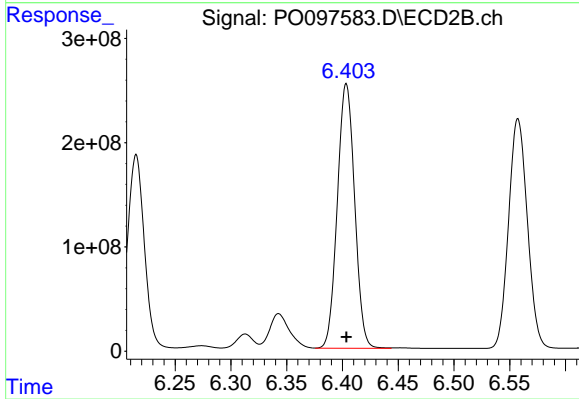
#31 AR-1260-1

R.T.: 6.215 min
 Delta R.T.: 0.000 min
 Response: 1955308885
 Conc: 52351.92 ng/ml



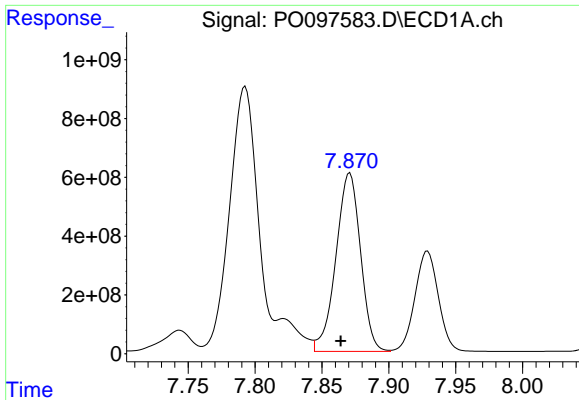
#32 AR-1260-2

R.T.: 7.507 min
 Delta R.T.: 0.006 min
 Response: 10273705621
 Conc: 75394.33 ng/ml



#32 AR-1260-2

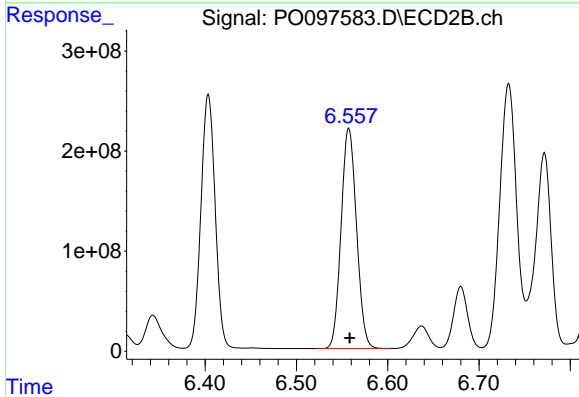
R.T.: 6.404 min
 Delta R.T.: 0.000 min
 Response: 2740399601
 Conc: 64763.04 ng/ml



#33 AR-1260-3

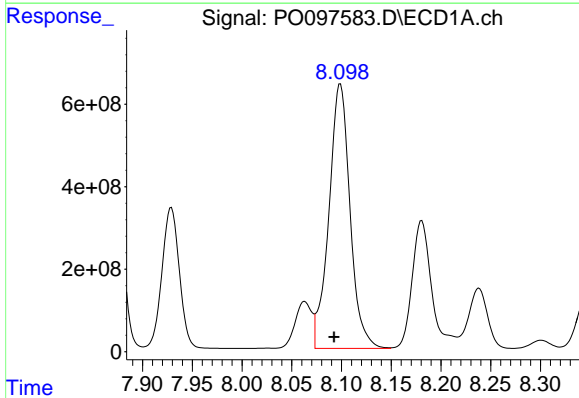
R.T.: 7.871 min
 Delta R.T.: 0.007 min
 Response: 7787582099
 Conc: 73677.62 ng/ml

Instrument :
 ECD_O
 ClientSampleId :



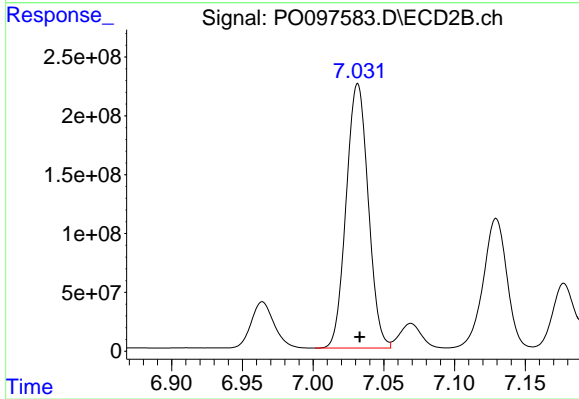
#33 AR-1260-3

R.T.: 6.557 min
 Delta R.T.: -0.001 min
 Response: 2585722872
 Conc: 61773.64 ng/ml



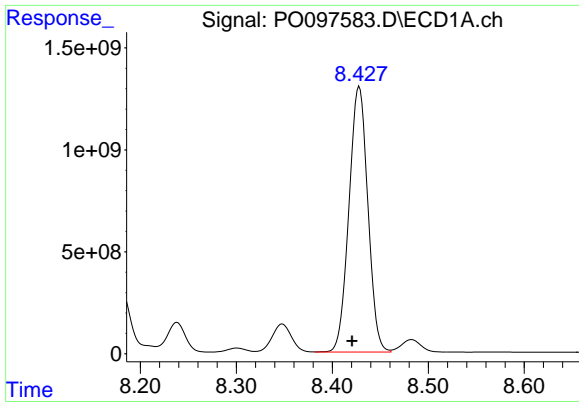
#34 AR-1260-4

R.T.: 8.099 min
 Delta R.T.: 0.006 min
 Response: 9490719993
 Conc: 83896.41 ng/ml



#34 AR-1260-4

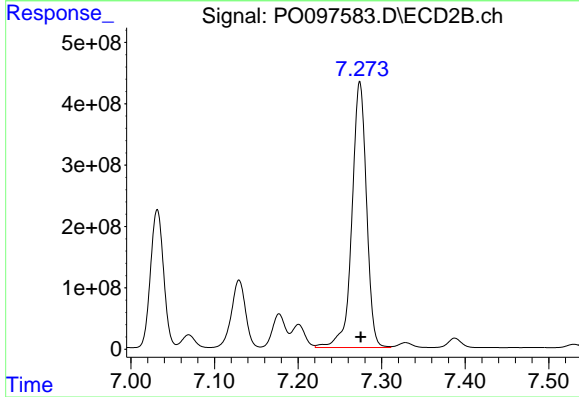
R.T.: 7.032 min
 Delta R.T.: -0.001 min
 Response: 2439734473
 Conc: 75433.05 ng/ml



#35 AR-1260-5

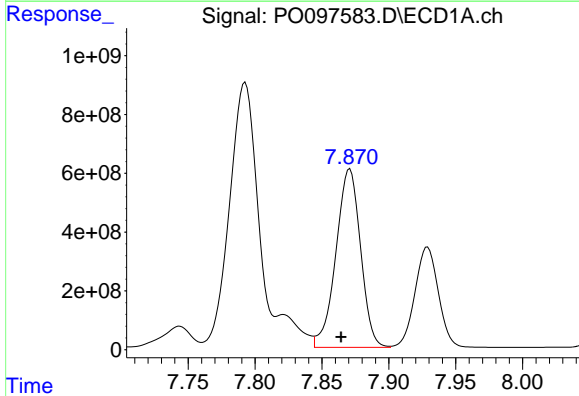
R.T.: 8.430 min
 Delta R.T.: 0.010 min
 Response: 16050222661
 Conc: 85383.15 ng/ml

Instrument :
 ECD_O
 ClientSampleId :



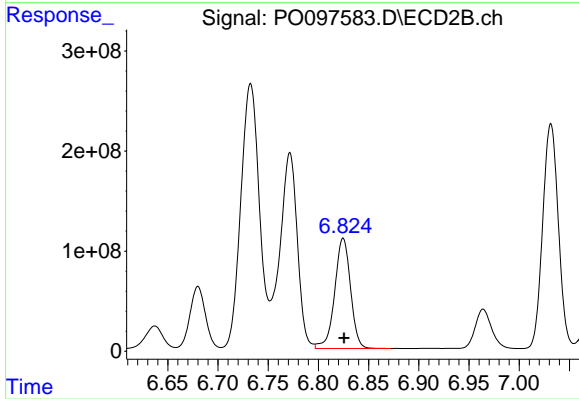
#35 AR-1260-5

R.T.: 7.274 min
 Delta R.T.: -0.001 min
 Response: 5243549757
 Conc: 79414.19 ng/ml



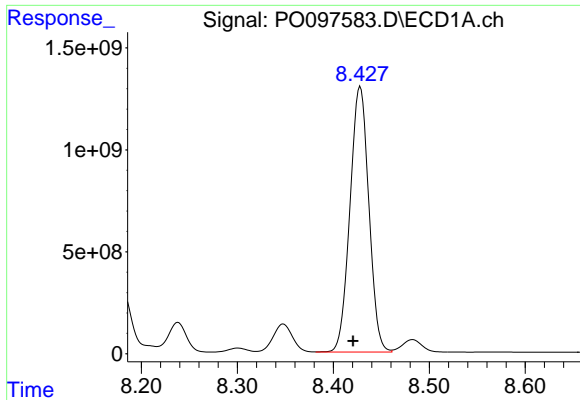
#36 AR-1262-1

R.T.: 7.871 min
 Delta R.T.: 0.007 min
 Response: 7787582099
 Conc: 51750.90 ng/ml



#36 AR-1262-1

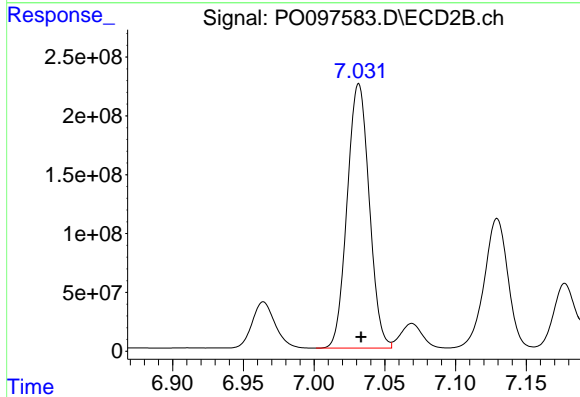
R.T.: 6.825 min
 Delta R.T.: 0.000 min
 Response: 1210444376
 Conc: 60314.53 ng/ml



#37 AR-1262-2

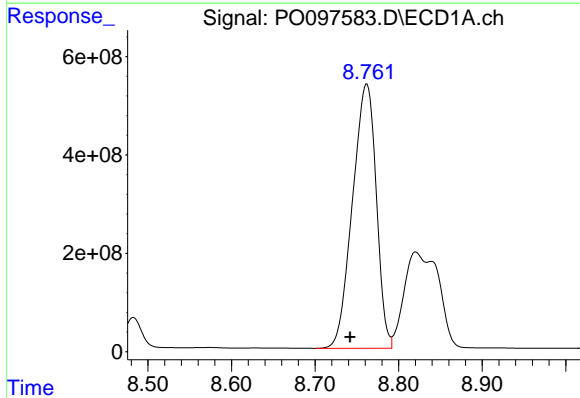
R.T.: 8.430 min
 Delta R.T.: 0.010 min
 Response: 16050222661
 Conc: 73292.91 ng/ml

Instrument :
 ECD_O
 ClientSampleId :



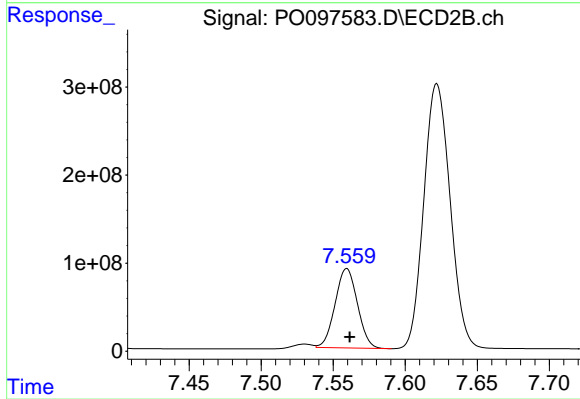
#37 AR-1262-2

R.T.: 7.032 min
 Delta R.T.: -0.002 min
 Response: 2439734473
 Conc: 55840.34 ng/ml



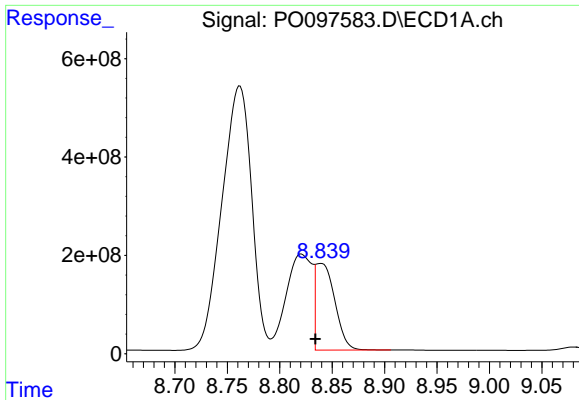
#38 AR-1262-3

R.T.: 8.762 min
 Delta R.T.: 0.020 min
 Response: 10607902076
 Conc: 68422.85 ng/ml



#38 AR-1262-3

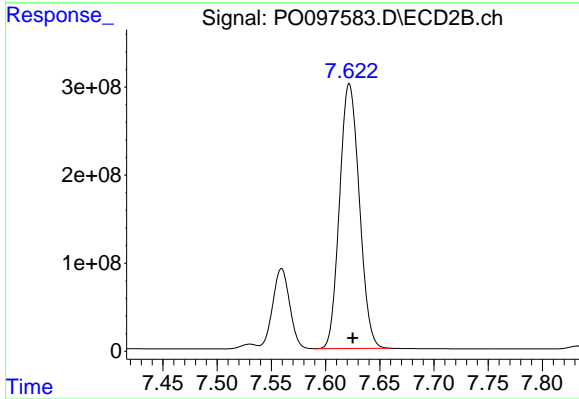
R.T.: 7.559 min
 Delta R.T.: -0.002 min
 Response: 971888705
 Conc: 31185.04 ng/ml



#39 AR-1262-4

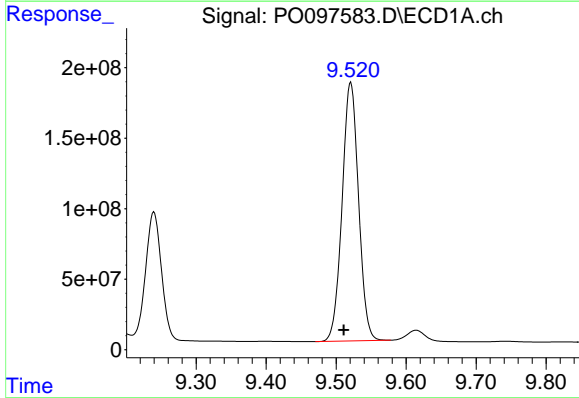
R.T.: 8.839 min
 Delta R.T.: 0.005 min
 Response: 2251939655
 Conc: 18064.60 ng/ml

Instrument :
 ECD_O
 ClientSampleId :



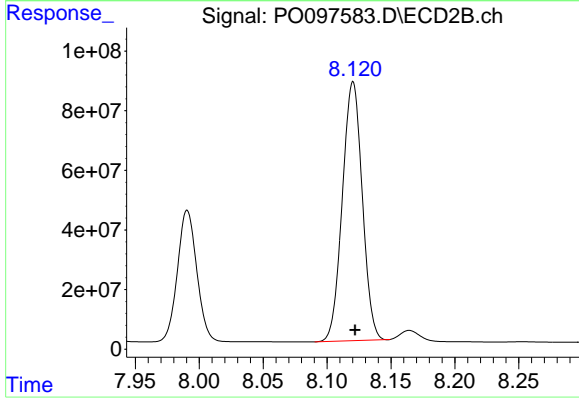
#39 AR-1262-4

R.T.: 7.622 min
 Delta R.T.: -0.003 min
 Response: 3812440288
 Conc: 67777.84 ng/ml



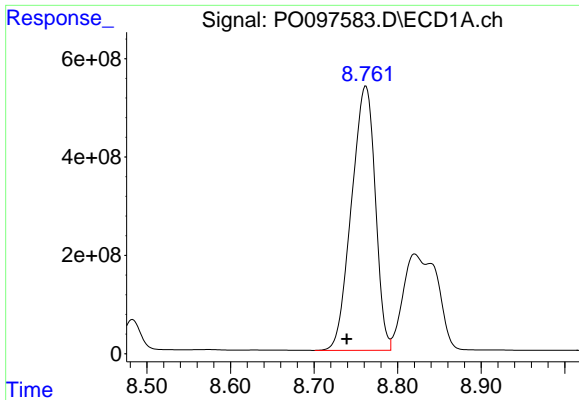
#40 AR-1262-5

R.T.: 9.521 min
 Delta R.T.: 0.010 min
 Response: 2990959245
 Conc: 43492.42 ng/ml



#40 AR-1262-5

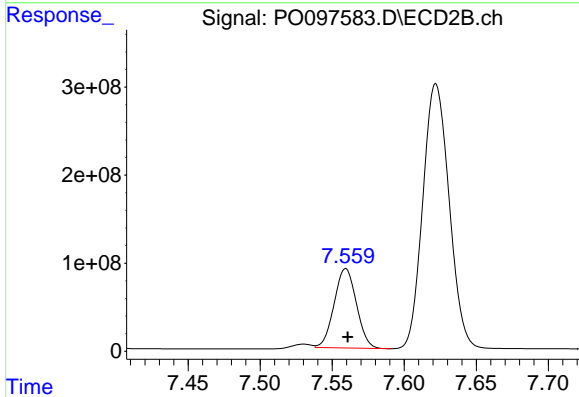
R.T.: 8.120 min
 Delta R.T.: -0.002 min
 Response: 943442654
 Conc: 40103.21 ng/ml



#41 AR-1268-1

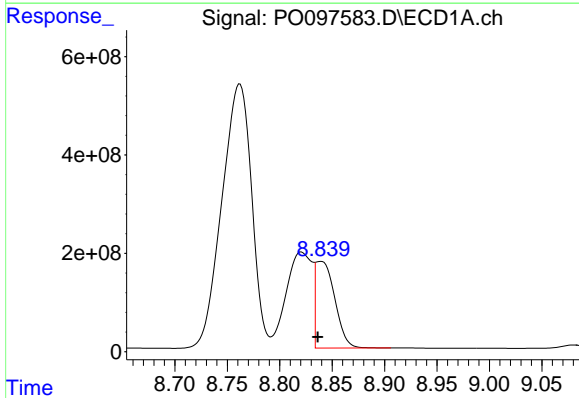
R.T.: 8.762 min
 Delta R.T.: 0.023 min
 Response: 10607902076
 Conc: 37350.17 ng/ml

Instrument :
 ECD_O
 ClientSampleId :



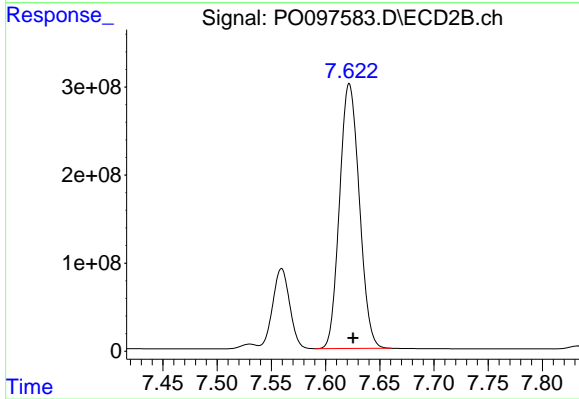
#41 AR-1268-1

R.T.: 7.559 min
 Delta R.T.: -0.001 min
 Response: 971888705
 Conc: 10153.27 ng/ml



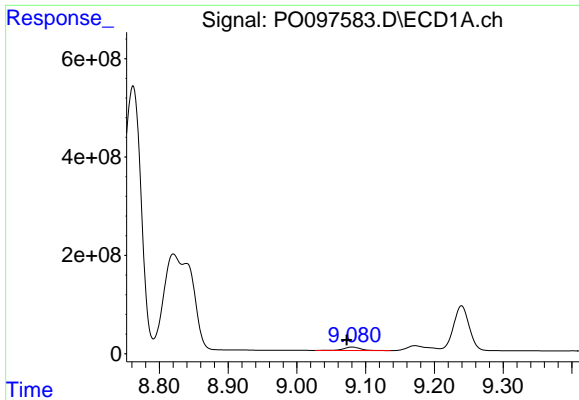
#42 AR-1268-2

R.T.: 8.839 min
 Delta R.T.: 0.003 min
 Response: 2251939655
 Conc: 8863.24 ng/ml



#42 AR-1268-2

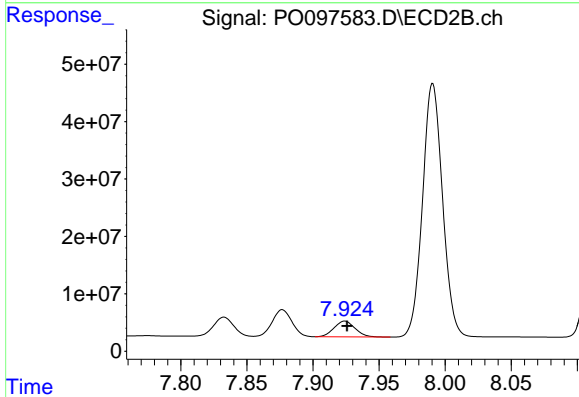
R.T.: 7.622 min
 Delta R.T.: -0.003 min
 Response: 3812440288
 Conc: 45991.27 ng/ml



#43 AR-1268-3

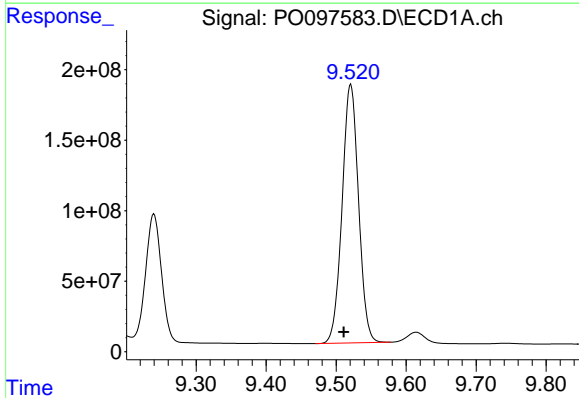
R.T.: 9.081 min
 Delta R.T.: 0.008 min
 Response: 119017496
 Conc: 527.70 ng/ml

Instrument :
 ECD_O
 ClientSampleId :



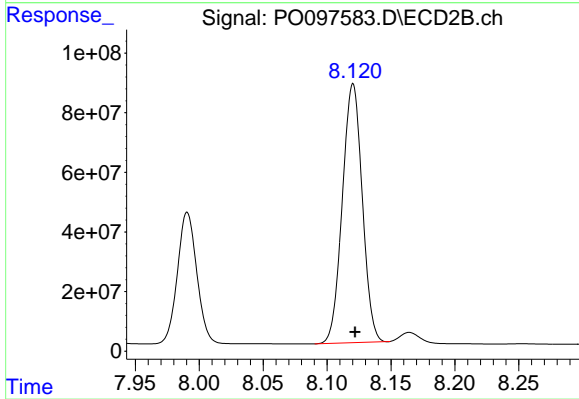
#43 AR-1268-3

R.T.: 7.924 min
 Delta R.T.: -0.002 min
 Response: 30496048
 Conc: 1539.12 ng/ml



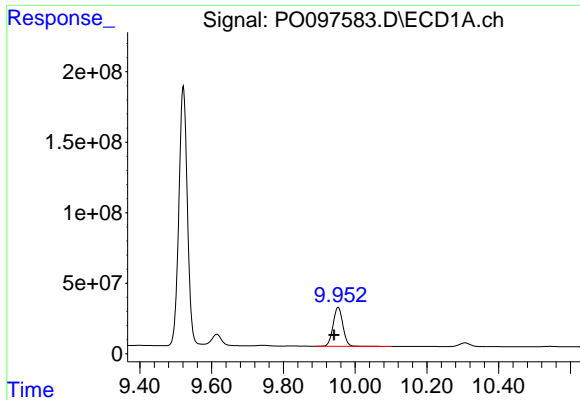
#44 AR-1268-4

R.T.: 9.521 min
 Delta R.T.: 0.010 min
 Response: 2990959245
 Conc: 38859.32 ng/ml



#44 AR-1268-4

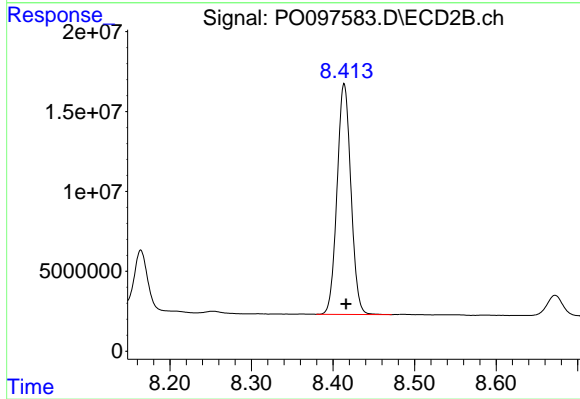
R.T.: 8.120 min
 Delta R.T.: -0.002 min
 Response: 943442654
 Conc: 36507.57 ng/ml



#45 AR-1268-5

R.T.: 9.953 min
Delta R.T.: 0.011 min
Response: 524560744
Conc: 759.63 ng/ml

Instrument :
ECD_O
ClientSampleId :



#45 AR-1268-5

R.T.: 8.414 min
Delta R.T.: -0.003 min
Response: 170511247
Conc: 747.97 ng/ml