

Data Path : Z:\pestpcbsrv\HPCHEM1\ECD_0\Data\P0083123\
 Data File : P0097586.D
 Signal(s) : Signal #1: ECD1A.ch Signal #2: ECD2B.ch
 Acq On : 31 Aug 2023 16:37
 Operator : YP/AJ
 Sample : 04232-06
 Misc :
 ALS Vial : 16 Sample Multiplier: 1

Instrument :
 ECD_0
 ClientSampleId :

Integration File signal 1: autoint1.e
 Integration File signal 2: autoint2.e
 Quant Time: Sep 01 01:27:54 2023
 Quant Method : Z:\pestpcbsrv\HPCHEM1\ECD_0\methods\P0082823.M
 Quant Title : GC EXTRACTABLES
 QLast Update : Tue Aug 29 10:29:21 2023
 Response via : Initial Calibration
 Integrator: ChemStation

Volume Inj. : 2 µl
 Signal #1 Phase : ZB-MR1 Signal #2 Phase: ZB-MR2
 Signal #1 Info : 30Mx0.32mmx 0.50µ Signal #2 Info : 30M x 0.32mm x 0.25µm

Compound	RT#1	RT#2	Resp#1	Resp#2	ng/ml	ng/ml

System Monitoring Compounds						
1) SA Tetrachlo...	4.430	3.677f	1571.3E6	379.6E6	470.790	562.604
2) SA Decachlor...	10.308	8.673	40156233	12266917	21.879	21.370

Compound	RT#1	RT#2	Resp#1	Resp#2	ng/ml	ng/ml

Target Compounds						
3) L1 AR-1016-1	5.624	4.731	78936.9E6	11116.8E6	876996.223	510680.915 #
4) L1 AR-1016-2	5.624	4.731	78936.9E6	11116.8E6	568887.100	368417.713 #
5) L1 AR-1016-3	5.714	4.926	60445.8E6	8756.7E6	666672.460	542095.347
6) L1 AR-1016-4	5.813	4.970	57420.0E6	5581.6E6	828157.252	388981.633 #
7) L1 AR-1016-5	6.114	5.183	23205.9E6	7090.8E6	326708.910	387723.935
8) L2 AR-1221-1	4.657	3.848	4001.9E6	865.1E6	99436.040	105680.151
9) L2 AR-1221-2	4.746	3.934	5127.0E6	1008.0E6	170564.275	173923.214
10) L2 AR-1221-3	4.826	4.011	21114.7E6	5261.0E6	237027.795	286110.011
11) L3 AR-1232-1	4.826	4.011	21114.7E6	5261.0E6	286280.656	349193.442
12) L3 AR-1232-2	5.356	4.731	26128.8E6	11116.8E6	681831.862	796322.979
13) L3 AR-1232-3	5.624	4.926	78936.9E6	8756.7E6	1220495.143	1246764.072
14) L3 AR-1232-4	5.813	5.012	57420.0E6	6689.1E6	1802603.101	946046.335 #
15) L3 AR-1232-5	5.909	5.183	57347.5E6	7090.8E6	1948987.615	900856.488 #
16) L4 AR-1242-1	5.624	4.731	78936.9E6	11116.8E6	974642.592	576295.583 #
17) L4 AR-1242-2	5.624	4.731	78936.9E6	11116.8E6	632066.144	408412.936 #
18) L4 AR-1242-3	5.714	4.926	60445.8E6	8756.7E6	735176.392	610191.664
19) L4 AR-1242-4	5.813	5.012	57420.0E6	6689.1E6	914700.352	422332.855 #
20) L4 AR-1242-5	6.561	5.536	8011.3E6	3025.2E6	127374.232	171416.706 #
21) L5 AR-1248-1	5.624	4.731	78936.9E6	11116.8E6	1338405.872	808984.248 #
22) L5 AR-1248-2	5.909	4.970	57347.5E6	5581.6E6	579828.209	251718.006 #
23) L5 AR-1248-3	6.114	5.012	23205.9E6	6689.1E6	223980.988	290923.594 #
24) L5 AR-1248-4	6.522	5.183	8655.1E6	7090.8E6	94613.137	261296.853 #
25) L5 AR-1248-5	6.561	5.578	8011.3E6	1967.0E6	78915.017	87003.676
26) L6 AR-1254-1	6.495	5.536	7836.6E6	3025.2E6	71280.061	78382.414
27) L6 AR-1254-2	6.718	5.684	5760.1E6	468.9E6	35346.707	13765.605 #
28) L6 AR-1254-3	7.083	6.088	1266.3E6	602.2E6	7775.458	11350.189 #
29) L6 AR-1254-4	7.372	6.316	530.0E6	111.5E6	5437.706	4089.075
30) L6 AR-1254-5	7.793	6.734	3791.3E6	911.8E6	33574.412	20680.815 #
31) L7 AR-1260-1	7.249	6.218	2018.1E6	606.2E6	15810.011	16230.400
32) L7 AR-1260-2	7.508	6.406	2811.3E6	749.0E6	20630.771	17700.432
33) L7 AR-1260-3	7.871	6.559	2038.7E6	684.9E6	19287.893	16361.908
34) L7 AR-1260-4	8.100	7.033	2455.3E6	641.0E6	21704.142	19819.653
35) L7 AR-1260-5	8.428	7.275	4837.4E6	1514.0E6	25733.829	22929.230
36) L8 AR-1262-1	7.871	6.826	2038.7E6	309.4E6	13547.746	15418.775
37) L8 AR-1262-2	8.428	7.033	4837.4E6	641.0E6	22089.922	14671.767 #
38) L8 AR-1262-3	8.762	7.560	2714.7E6	246.8E6	17510.275	7920.204 #
39) L8 AR-1262-4	8.822	7.623	1406.9E6	1032.0E6	11285.938	18347.010 #
40) L8 AR-1262-5	9.522	8.120	735.0E6	229.6E6	10687.184	9761.172
41) L9 AR-1268-1	8.762	7.560	2714.7E6	246.8E6	9558.382	2578.671 #

Data Path : Z:\pestpcbsrv\HPCHEM1\ECD_0\Data\P0083123\
 Data File : P0097586.D
 Signal(s) : Signal #1: ECD1A.ch Signal #2: ECD2B.ch
 Acq On : 31 Aug 2023 16:37
 Operator : YP/AJ
 Sample : 04232-06
 Misc :
 ALS Vial : 16 Sample Multiplier: 1

Instrument :
 ECD_0
 ClientSampleId :

Integration File signal 1: autoint1.e
 Integration File signal 2: autoint2.e
 Quant Time: Sep 01 01:27:54 2023
 Quant Method : Z:\pestpcbsrv\HPCHEM1\ECD_0\methods\P0082823.M
 Quant Title : GC EXTRACTABLES
 QLast Update : Tue Aug 29 10:29:21 2023
 Response via : Initial Calibration
 Integrator: ChemStation

Volume Inj. : 2 µl
 Signal #1 Phase : ZB-MR1 Signal #2 Phase: ZB-MR2
 Signal #1 Info : 30Mx0.32mmx 0.50µ Signal #2 Info : 30M x 0.32mm x 0.25µm

	Compound	RT#1	RT#2	Resp#1	Resp#2	ng/ml	ng/ml	
42)	L9 AR-1268-2	8.822	7.623	1406.9E6	1032.0E6	5537.347	12449.531	#
43)	L9 AR-1268-3	9.081	7.925	31732257	8008345	140.695	404.177	#
44)	L9 AR-1268-4	9.522	8.120	735.0E6	229.6E6	9548.716	8885.989	
45)	L9 AR-1268-5	9.953	8.415	136.5E6	43764749	197.678	191.980	

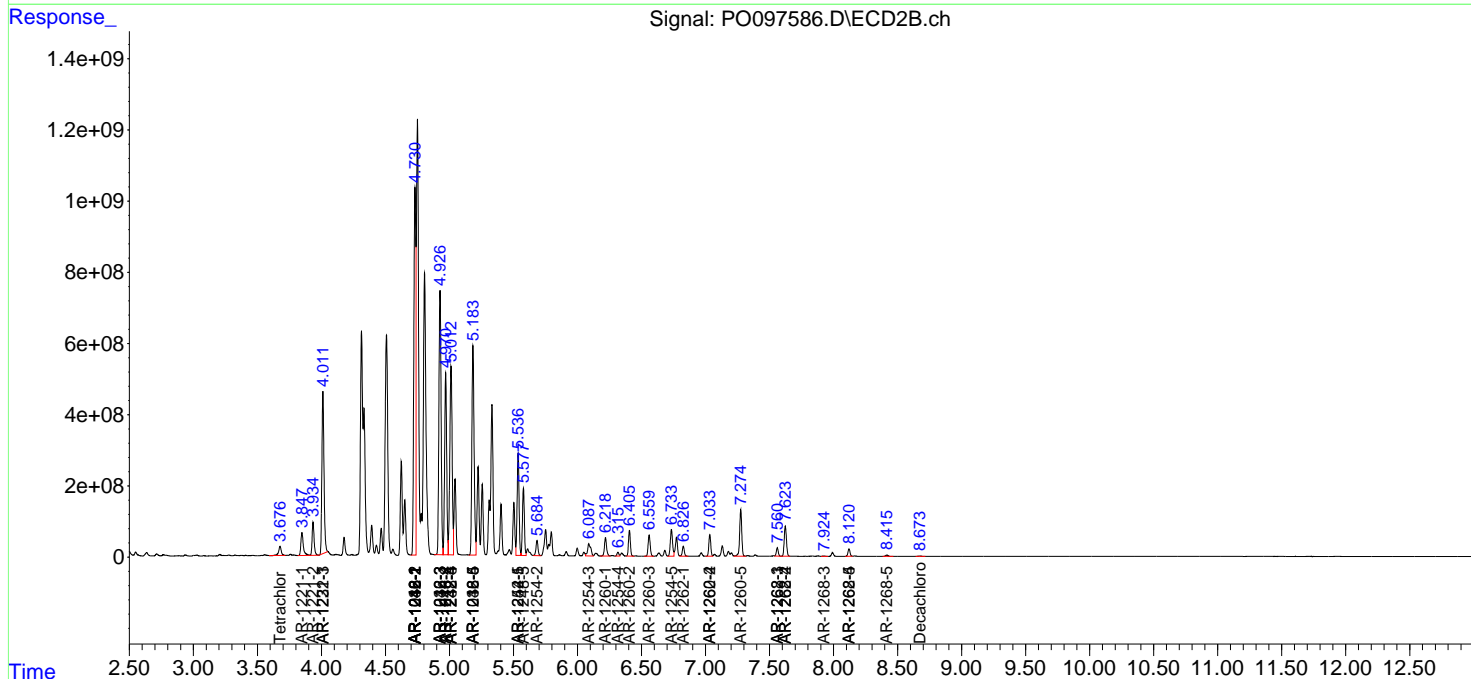
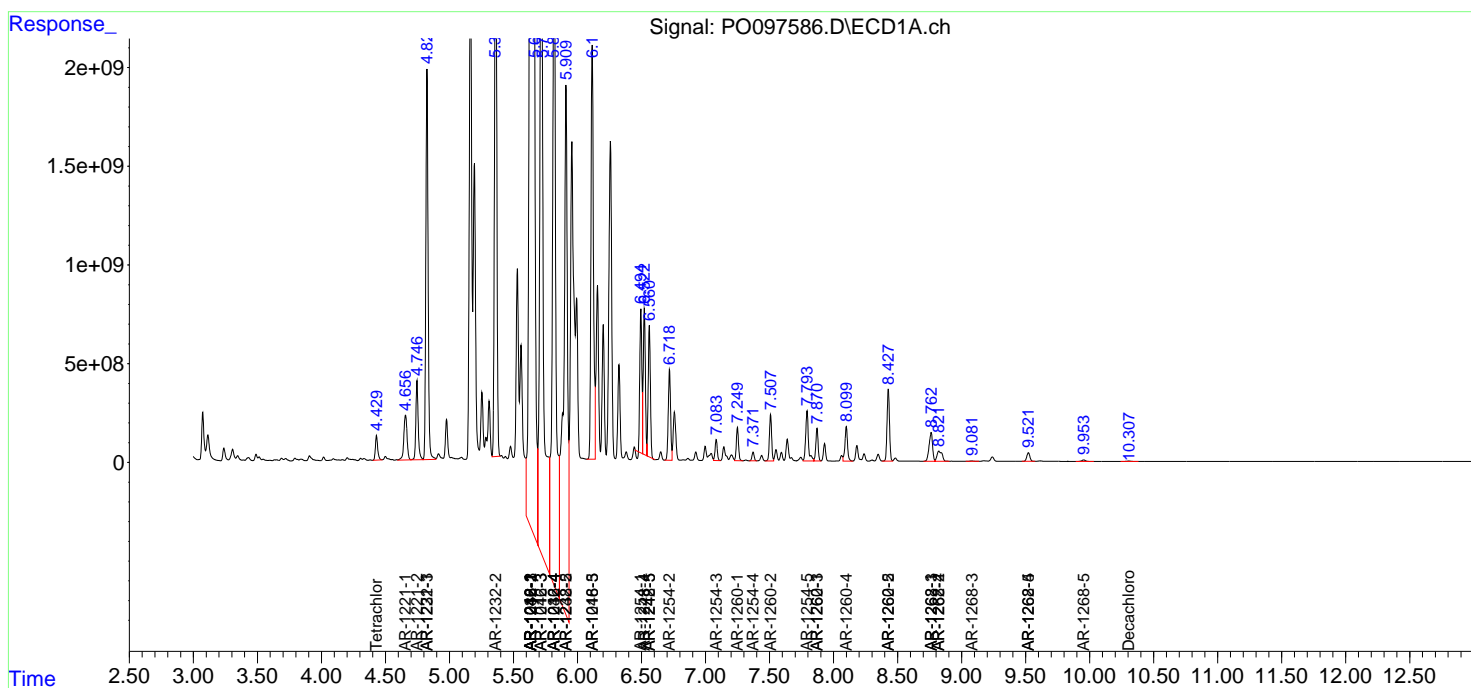
(f)=RT Delta > 1/2 Window (#)=Amounts differ by > 25% (m)=manual int.

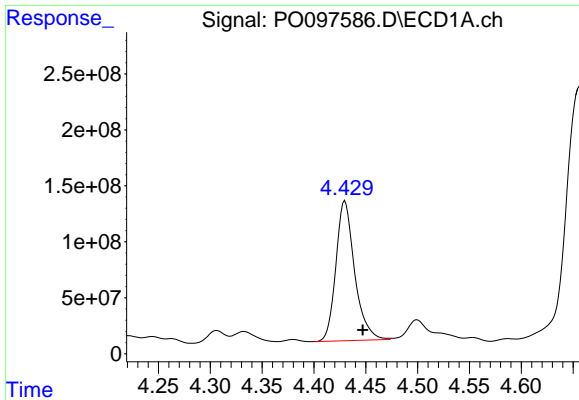
Data Path : Z:\pestpcbsrv\HPCHEM1\ECD_O\Data\PO083123\
 Data File : PO097586.D
 Signal(s) : Signal #1: ECD1A.ch Signal #2: ECD2B.ch
 Acq On : 31 Aug 2023 16:37
 Operator : YP/AJ
 Sample : 04232-06
 Misc :
 ALS Vial : 16 Sample Multiplier: 1

Instrument :
 ECD_O
 ClientSampleId :

Integration File signal 1: autoint1.e
 Integration File signal 2: autoint2.e
 Quant Time: Sep 01 01:27:54 2023
 Quant Method : Z:\pestpcbsrv\HPCHEM1\ECD_O\methods\PO082823.M
 Quant Title : GC EXTRACTABLES
 QLast Update : Tue Aug 29 10:29:21 2023
 Response via : Initial Calibration
 Integrator: ChemStation

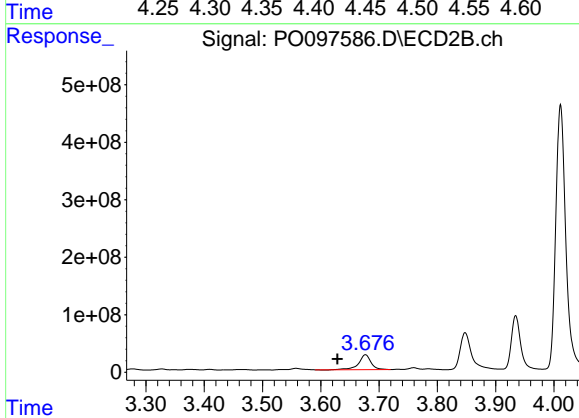
Volume Inj. : 2 µl
 Signal #1 Phase : ZB-MR1 Signal #2 Phase: ZB-MR2
 Signal #1 Info : 30Mx0.32mmx 0.50µm Signal #2 Info : 30M x 0.32mm x 0.25µm



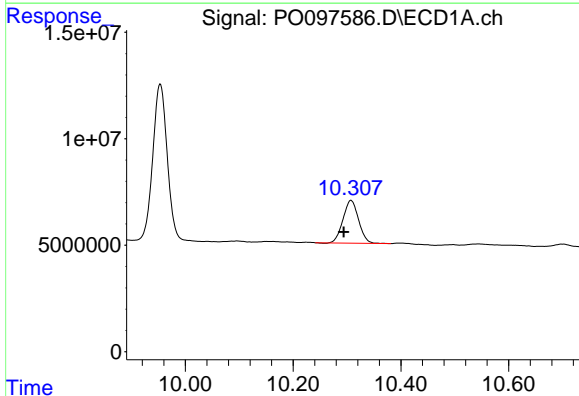


#1 Tetrachloro-m-xylene
 R.T.: 4.430 min
 Delta R.T.: -0.017 min
 Response: 1571304393
 Conc: 470.79 ng/ml

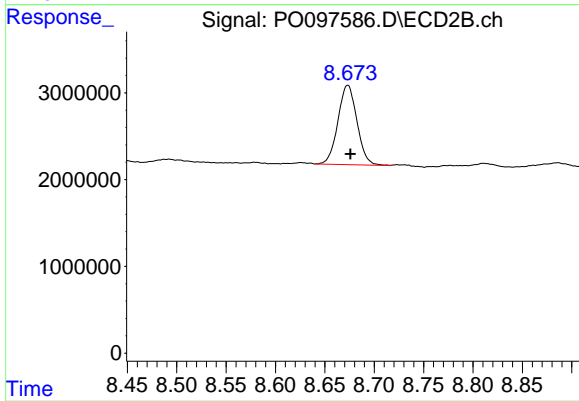
Instrument :
 ECD_O
 ClientSampleId :



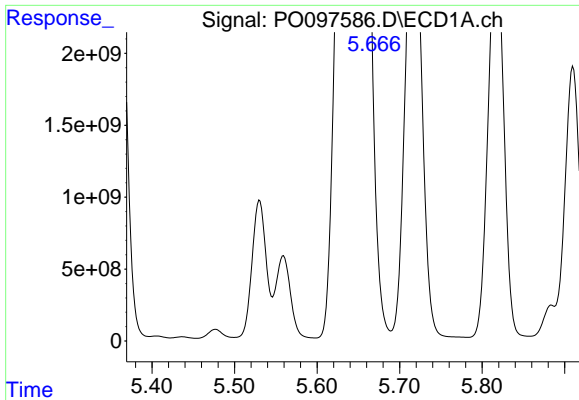
#1 Tetrachloro-m-xylene
 R.T.: 3.677 min
 Delta R.T.: 0.048 min
 Response: 379550662
 Conc: 562.60 ng/ml



#2 Decachlorobiphenyl
 R.T.: 10.308 min
 Delta R.T.: 0.014 min
 Response: 40156233
 Conc: 21.88 ng/ml



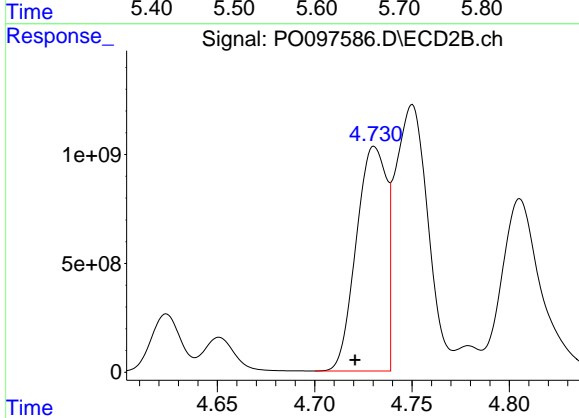
#2 Decachlorobiphenyl
 R.T.: 8.673 min
 Delta R.T.: -0.003 min
 Response: 12266917
 Conc: 21.37 ng/ml



#3 AR-1016-1

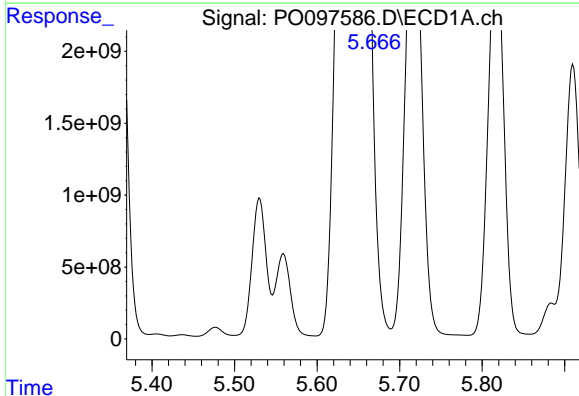
R.T.: 5.624 min
 Delta R.T.: 0.000 min
 Response: 78936947822
 Conc: 876996.22 ng

Instrument :
 ECD_O
 ClientSampleId :



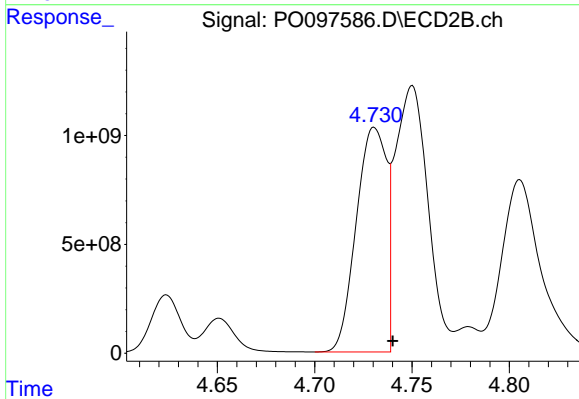
#3 AR-1016-1

R.T.: 4.731 min
 Delta R.T.: 0.010 min
 Response: 11116849299
 Conc: 510680.91 ng/ml



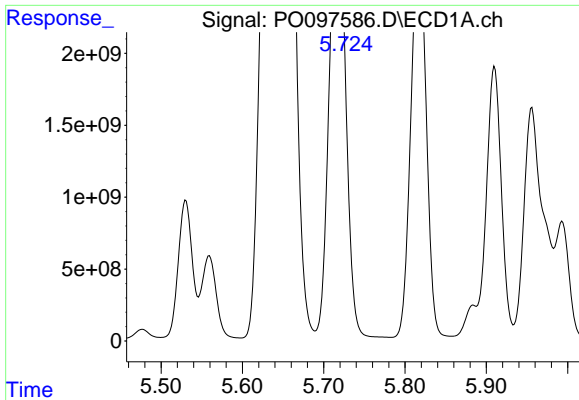
#4 AR-1016-2

R.T.: 5.624 min
 Delta R.T.: -0.022 min
 Response: 78936947822
 Conc: 568887.10 ng/ml



#4 AR-1016-2

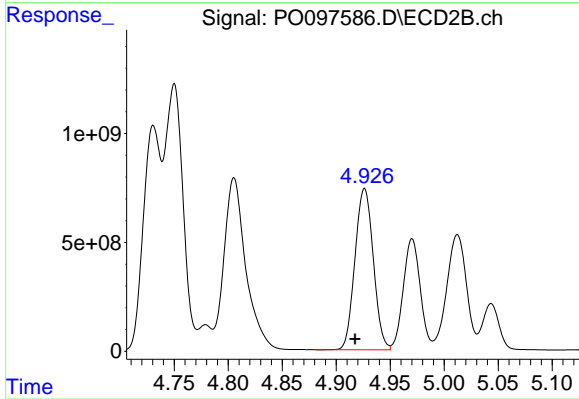
R.T.: 4.731 min
 Delta R.T.: -0.009 min
 Response: 11116849299
 Conc: 368417.71 ng/ml



#5 AR-1016-3

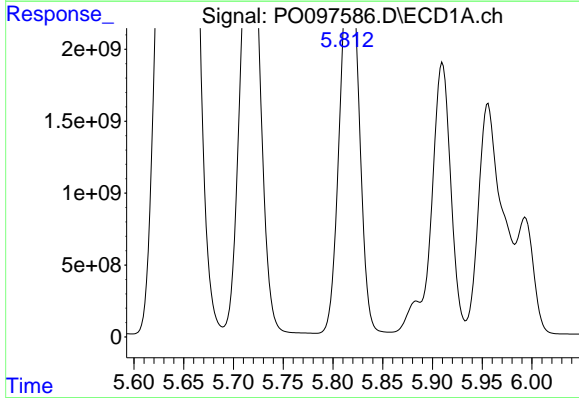
R.T.: 5.714 min
 Delta R.T.: 0.006 min
 Response: 60445780210
 Conc: 666672.46 ng

Instrument :
 ECD_O
 ClientSampleId :



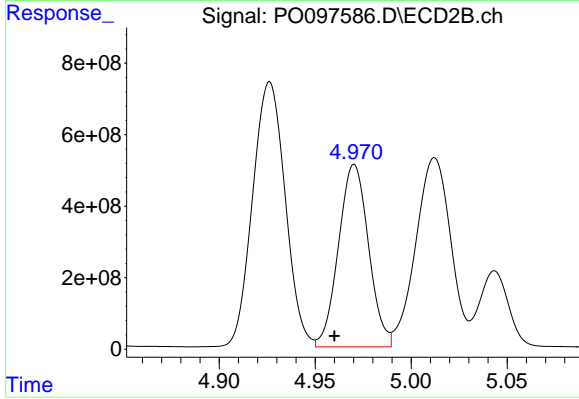
#5 AR-1016-3

R.T.: 4.926 min
 Delta R.T.: 0.009 min
 Response: 8756673425
 Conc: 542095.35 ng/ml



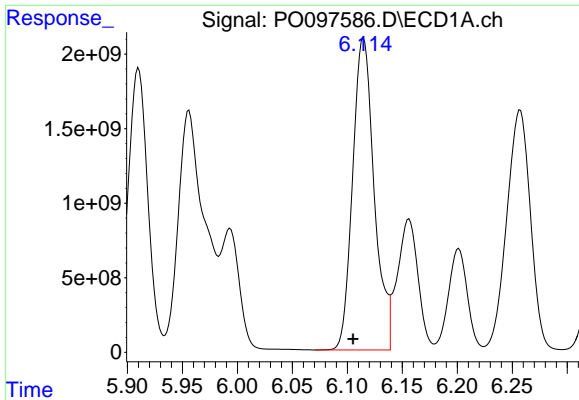
#6 AR-1016-4

R.T.: 5.813 min
 Delta R.T.: 0.006 min
 Response: 57420034349
 Conc: 828157.25 ng/ml



#6 AR-1016-4

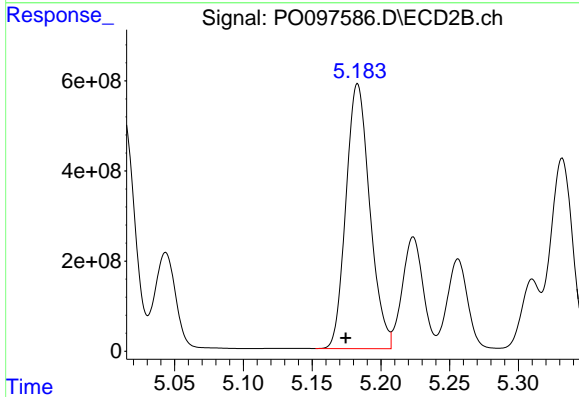
R.T.: 4.970 min
 Delta R.T.: 0.010 min
 Response: 5581590753
 Conc: 388981.63 ng/ml



#7 AR-1016-5

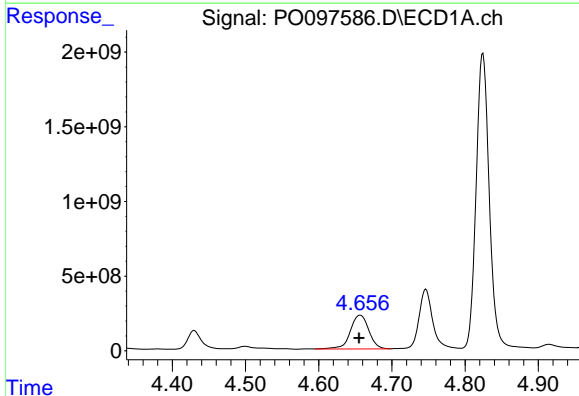
R.T.: 6.114 min
 Delta R.T.: 0.009 min
 Response: 23205887740
 Conc: 326708.91 ng

Instrument :
 ECD_O
 ClientSampleId :



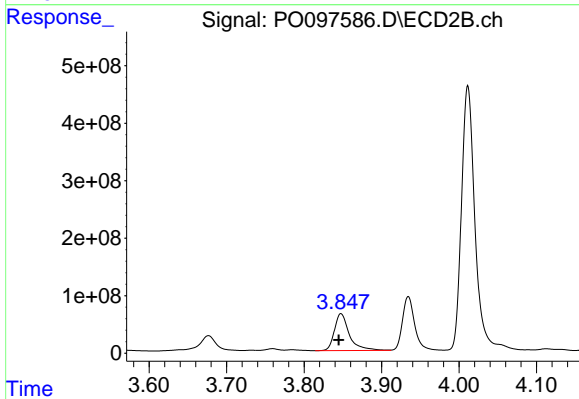
#7 AR-1016-5

R.T.: 5.183 min
 Delta R.T.: 0.009 min
 Response: 7090780271
 Conc: 387723.93 ng/ml



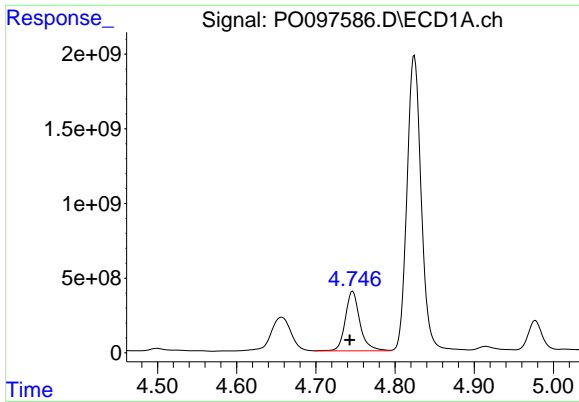
#8 AR-1221-1

R.T.: 4.657 min
 Delta R.T.: 0.002 min
 Response: 4001928899
 Conc: 99436.04 ng/ml



#8 AR-1221-1

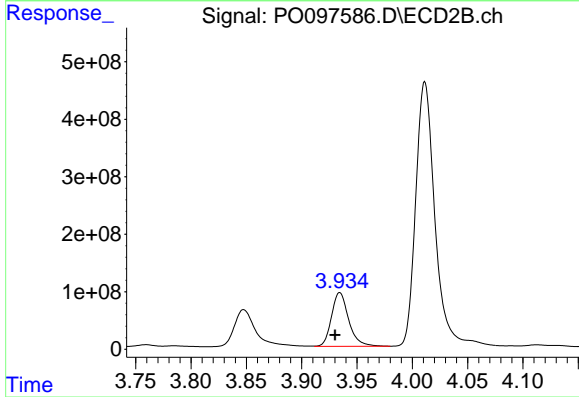
R.T.: 3.848 min
 Delta R.T.: 0.003 min
 Response: 865120617
 Conc: 105680.15 ng/ml



#9 AR-1221-2

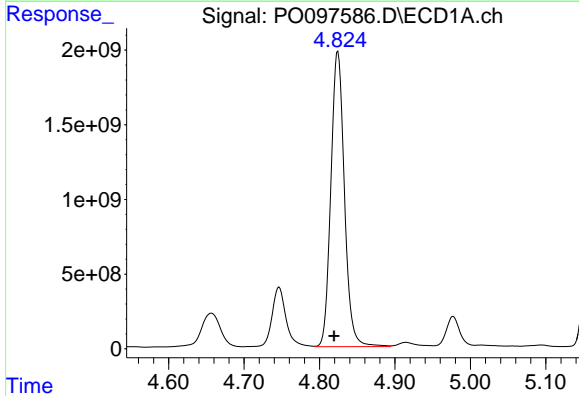
R.T.: 4.746 min
 Delta R.T.: 0.004 min
 Response: 5127049614
 Conc: 170564.28 ng/ml

Instrument :
 ECD_O
 ClientSampleId :



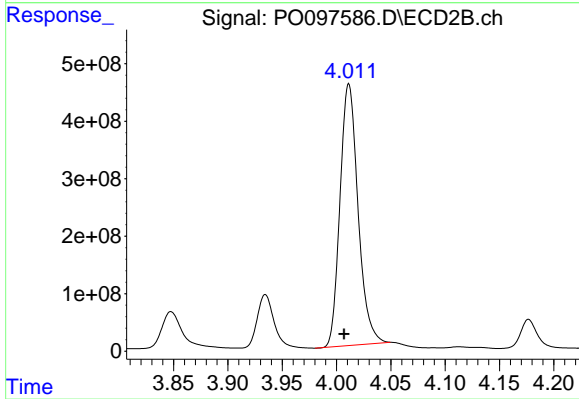
#9 AR-1221-2

R.T.: 3.934 min
 Delta R.T.: 0.004 min
 Response: 1008011642
 Conc: 173923.21 ng/ml



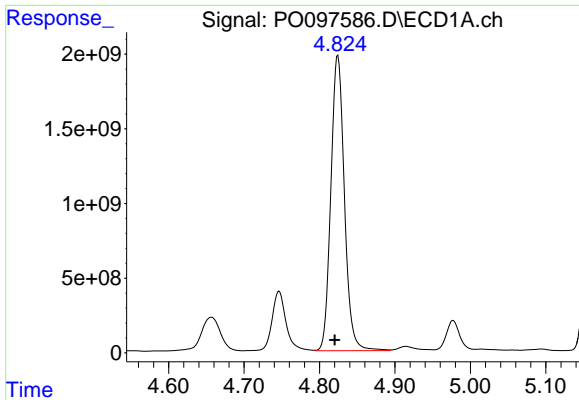
#10 AR-1221-3

R.T.: 4.826 min
 Delta R.T.: 0.007 min
 Response: 21114706069
 Conc: 237027.80 ng/ml



#10 AR-1221-3

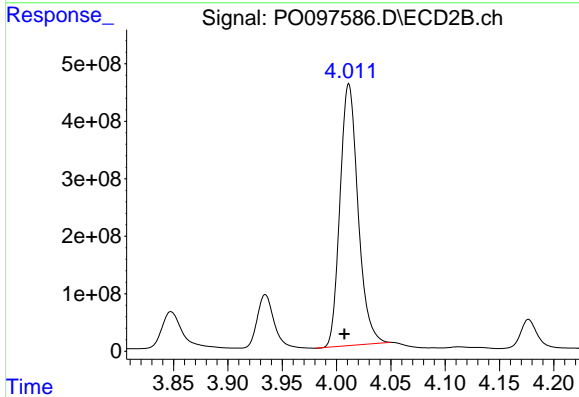
R.T.: 4.011 min
 Delta R.T.: 0.004 min
 Response: 5261003984
 Conc: 286110.01 ng/ml



#11 AR-1232-1

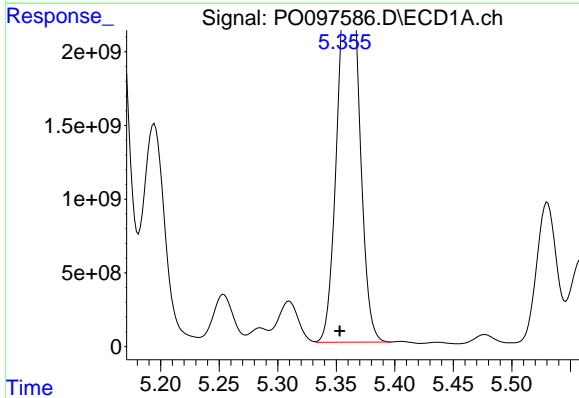
R.T.: 4.826 min
 Delta R.T.: 0.006 min
 Response: 21114706069
 Conc: 286280.66 ng/ml

Instrument :
 ECD_O
 ClientSampleId :



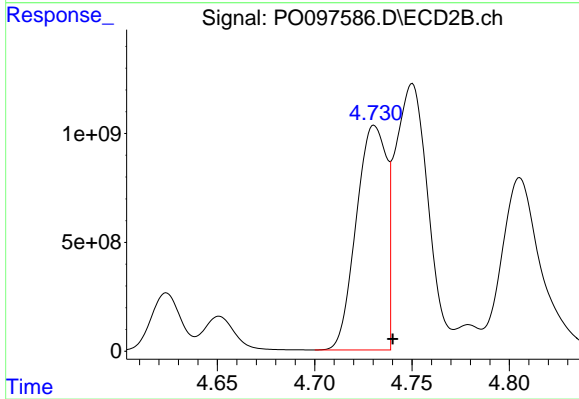
#11 AR-1232-1

R.T.: 4.011 min
 Delta R.T.: 0.004 min
 Response: 5261003984
 Conc: 349193.44 ng/ml



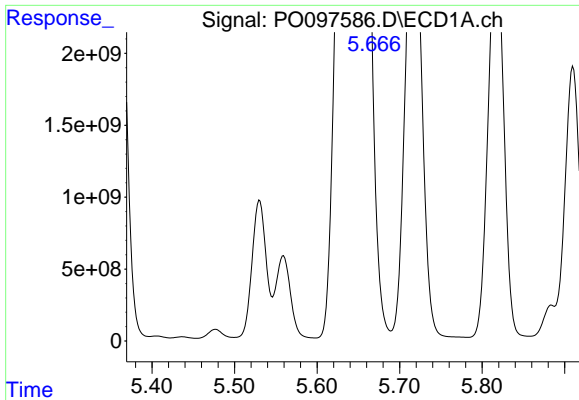
#12 AR-1232-2

R.T.: 5.356 min
 Delta R.T.: 0.003 min
 Response: 26128751062
 Conc: 681831.86 ng/ml



#12 AR-1232-2

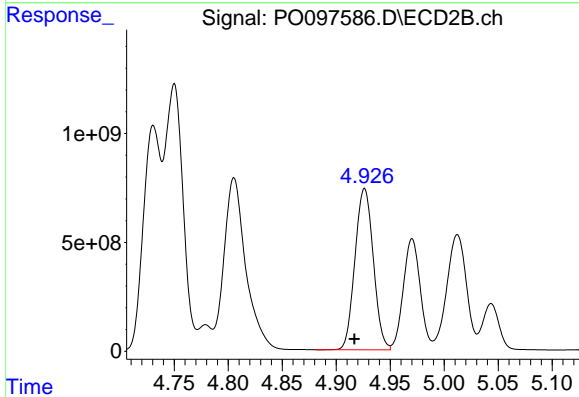
R.T.: 4.731 min
 Delta R.T.: -0.009 min
 Response: 11116849299
 Conc: 796322.98 ng/ml



#13 AR-1232-3

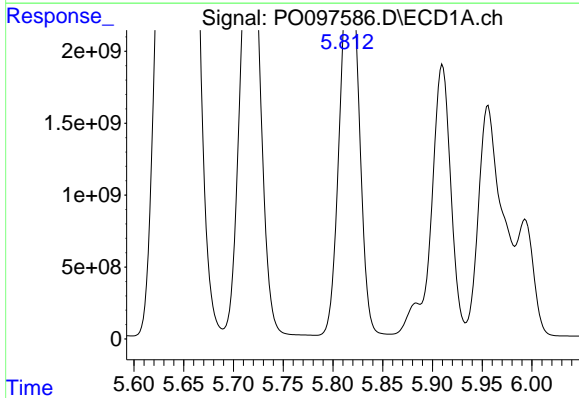
R.T.: 5.624 min
 Delta R.T.: -0.022 min
 Response: 78936947822
 Conc: 1220495.14 ng/ml

Instrument :
 ECD_O
 ClientSampleId :



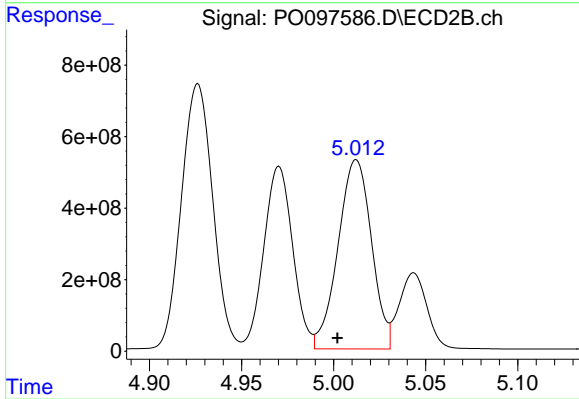
#13 AR-1232-3

R.T.: 4.926 min
 Delta R.T.: 0.009 min
 Response: 8756673425
 Conc: 1246764.07 ng/ml



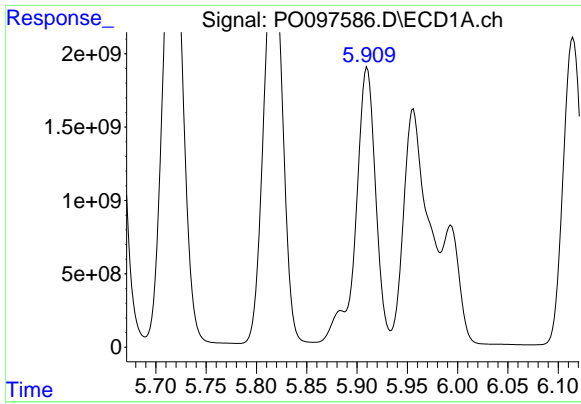
#14 AR-1232-4

R.T.: 5.813 min
 Delta R.T.: 0.005 min
 Response: 57420034349
 Conc: 1802603.10 ng/ml



#14 AR-1232-4

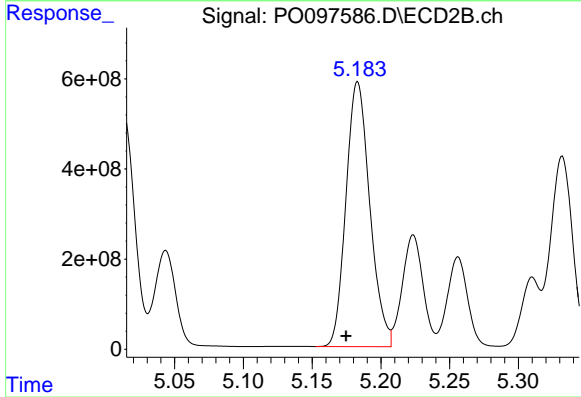
R.T.: 5.012 min
 Delta R.T.: 0.010 min
 Response: 6689087027
 Conc: 946046.33 ng/ml



#15 AR-1232-5

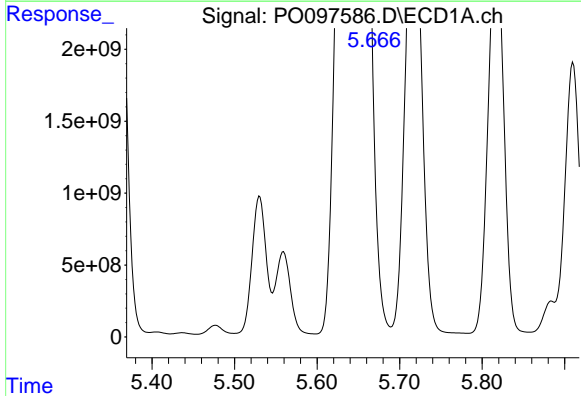
R.T.: 5.909 min
 Delta R.T.: 0.010 min
 Response: 57347542567
 Conc: 1948987.62 ng/ml

Instrument :
 ECD_O
 ClientSampleId :



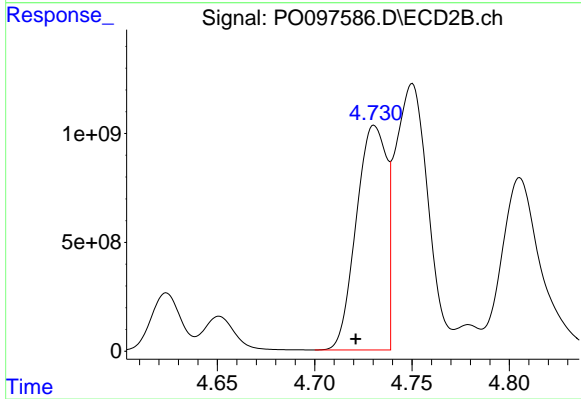
#15 AR-1232-5

R.T.: 5.183 min
 Delta R.T.: 0.008 min
 Response: 7090780271
 Conc: 900856.49 ng/ml



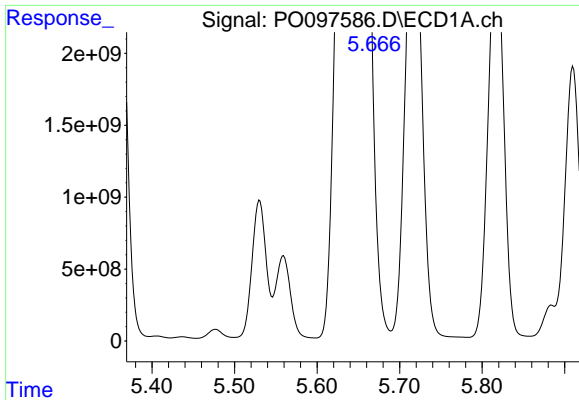
#16 AR-1242-1

R.T.: 5.624 min
 Delta R.T.: 0.000 min
 Response: 78936947822
 Conc: 974642.59 ng/ml



#16 AR-1242-1

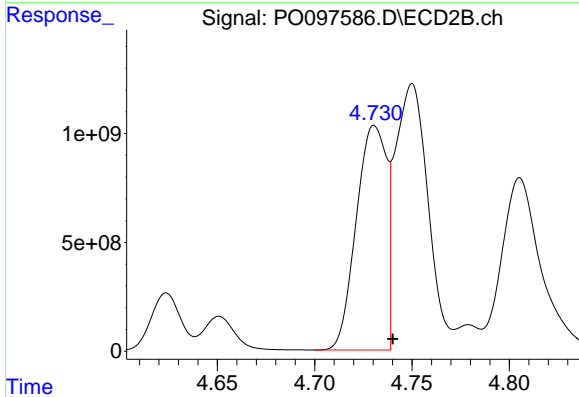
R.T.: 4.731 min
 Delta R.T.: 0.010 min
 Response: 11116849299
 Conc: 576295.58 ng/ml



#17 AR-1242-2

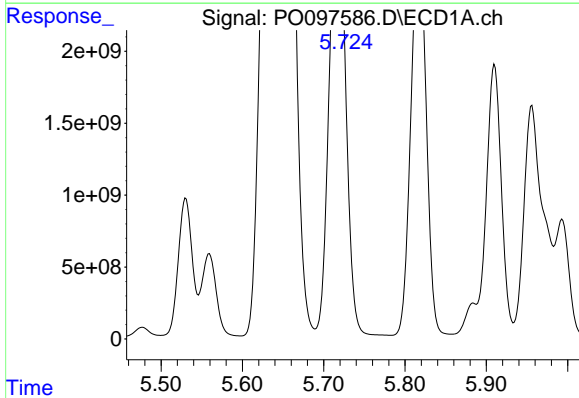
R.T.: 5.624 min
 Delta R.T.: -0.022 min
 Response: 78936947822
 Conc: 632066.14 ng

Instrument :
 ECD_O
 ClientSampleId :



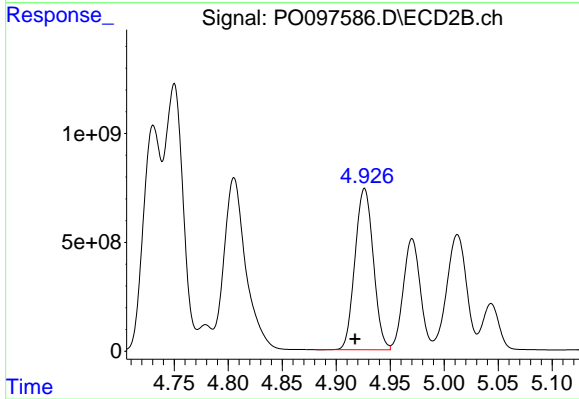
#17 AR-1242-2

R.T.: 4.731 min
 Delta R.T.: -0.010 min
 Response: 11116849299
 Conc: 408412.94 ng/ml



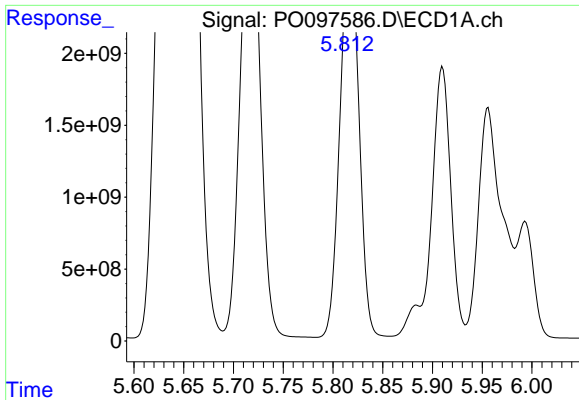
#18 AR-1242-3

R.T.: 5.714 min
 Delta R.T.: 0.005 min
 Response: 60445780210
 Conc: 735176.39 ng/ml



#18 AR-1242-3

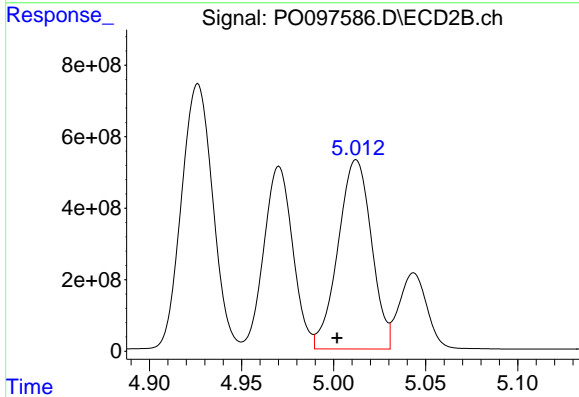
R.T.: 4.926 min
 Delta R.T.: 0.009 min
 Response: 8756673425
 Conc: 610191.66 ng/ml



#19 AR-1242-4

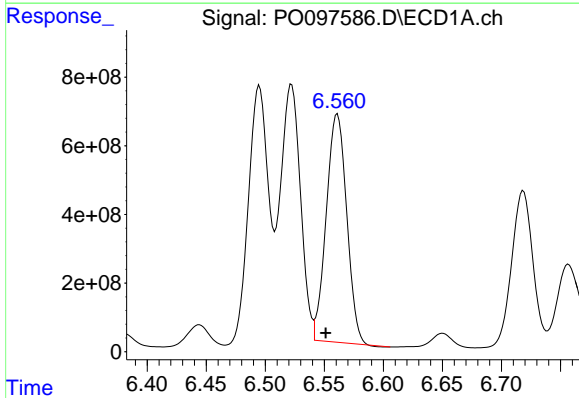
R.T.: 5.813 min
 Delta R.T.: 0.005 min
 Response: 57420034349
 Conc: 914700.35 ng

Instrument :
 ECD_O
 ClientSampleId :



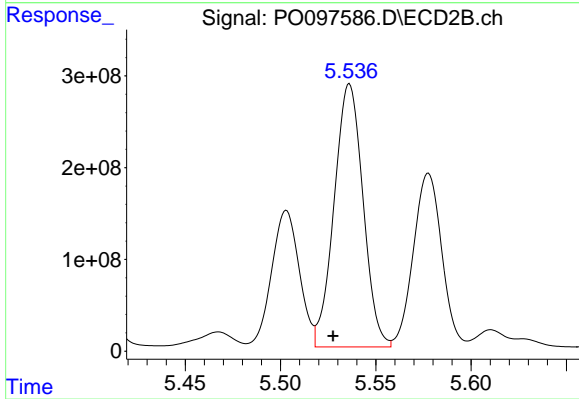
#19 AR-1242-4

R.T.: 5.012 min
 Delta R.T.: 0.010 min
 Response: 6689087027
 Conc: 422332.86 ng/ml



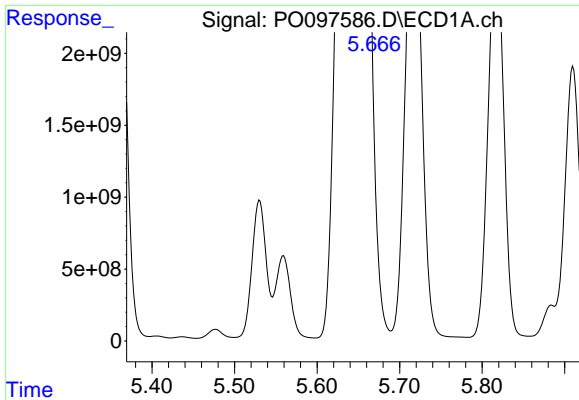
#20 AR-1242-5

R.T.: 6.561 min
 Delta R.T.: 0.010 min
 Response: 8011287105
 Conc: 127374.23 ng/ml



#20 AR-1242-5

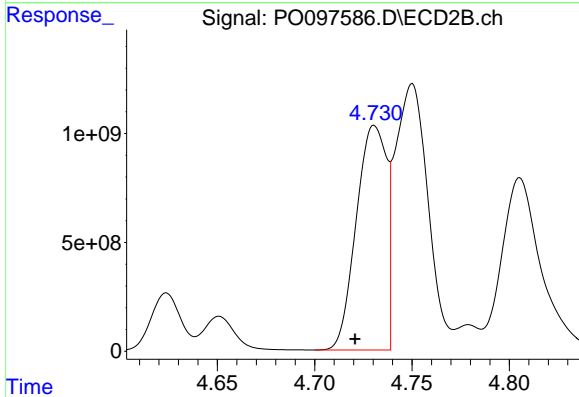
R.T.: 5.536 min
 Delta R.T.: 0.009 min
 Response: 3025200019
 Conc: 171416.71 ng/ml



#21 AR-1248-1

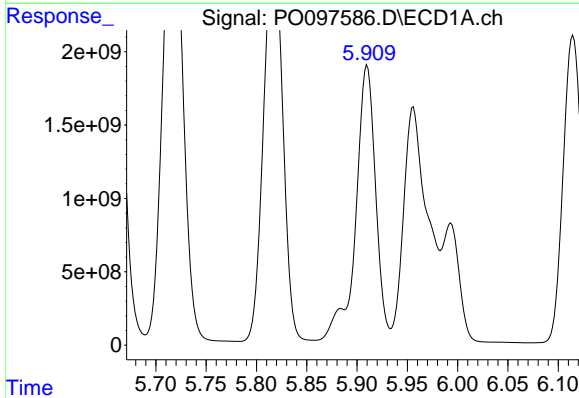
R.T.: 5.624 min
 Delta R.T.: 0.000 min
 Response: 78936947822
 Conc: 1338405.87 ng/ml

Instrument :
 ECD_O
 ClientSampleId :



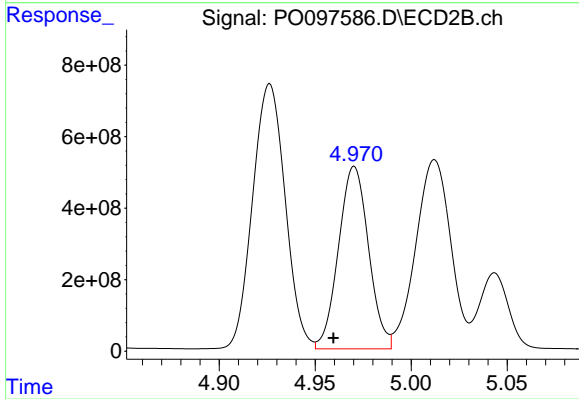
#21 AR-1248-1

R.T.: 4.731 min
 Delta R.T.: 0.010 min
 Response: 11116849299
 Conc: 808984.25 ng/ml



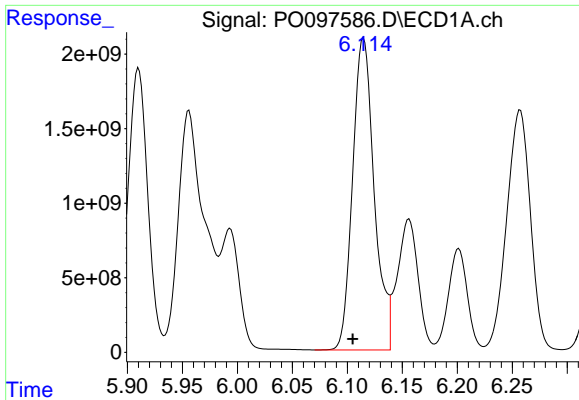
#22 AR-1248-2

R.T.: 5.909 min
 Delta R.T.: 0.010 min
 Response: 57347542567
 Conc: 579828.21 ng/ml



#22 AR-1248-2

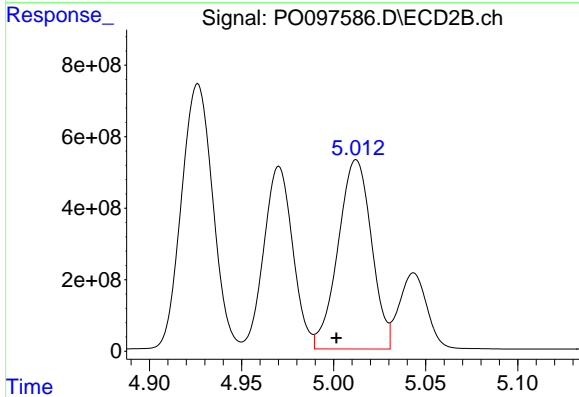
R.T.: 4.970 min
 Delta R.T.: 0.011 min
 Response: 5581590753
 Conc: 251718.01 ng/ml



#23 AR-1248-3

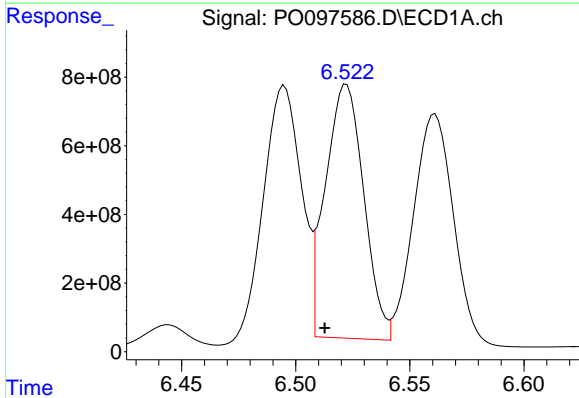
R.T.: 6.114 min
 Delta R.T.: 0.009 min
 Response: 23205887740
 Conc: 223980.99 ng

Instrument :
 ECD_O
 ClientSampleId :



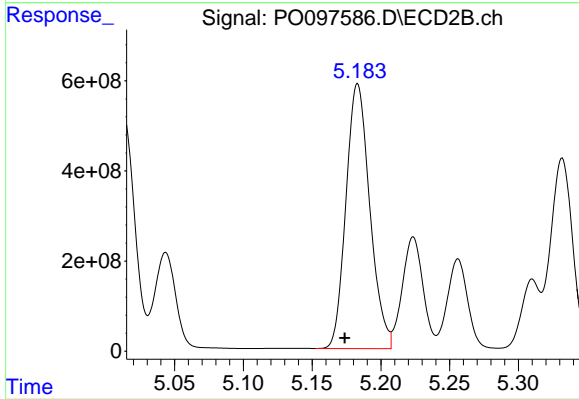
#23 AR-1248-3

R.T.: 5.012 min
 Delta R.T.: 0.011 min
 Response: 6689087027
 Conc: 290923.59 ng/ml



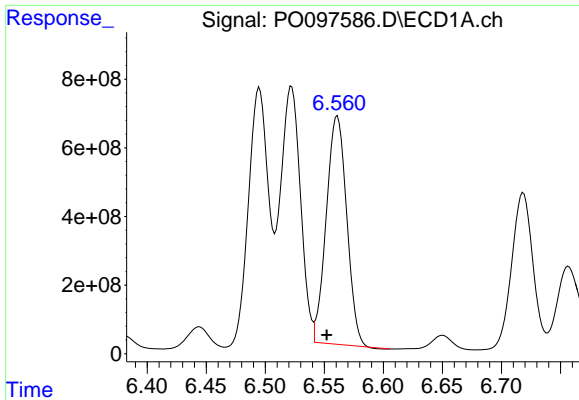
#24 AR-1248-4

R.T.: 6.522 min
 Delta R.T.: 0.009 min
 Response: 8655106899
 Conc: 94613.14 ng/ml



#24 AR-1248-4

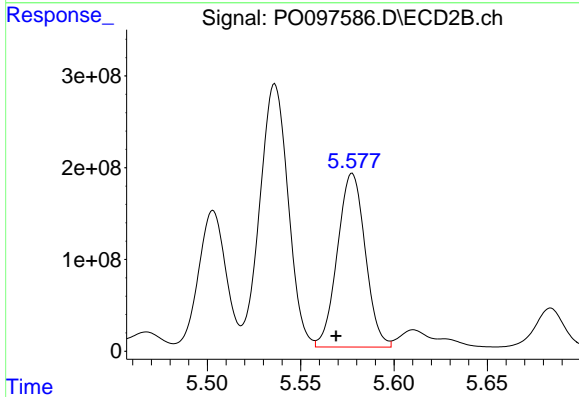
R.T.: 5.183 min
 Delta R.T.: 0.009 min
 Response: 7090780271
 Conc: 261296.85 ng/ml



#25 AR-1248-5

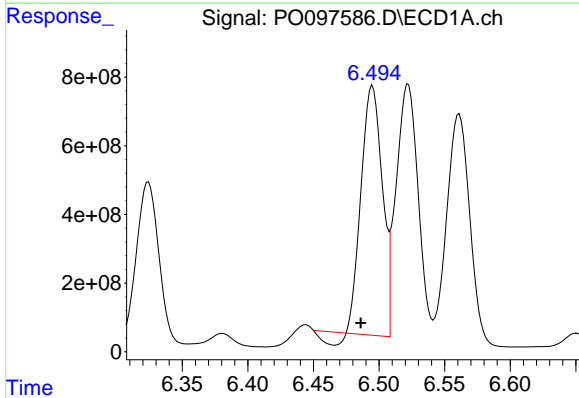
R.T.: 6.561 min
 Delta R.T.: 0.009 min
 Response: 8011287105
 Conc: 78915.02 ng/ml

Instrument :
 ECD_O
 ClientSampleId :



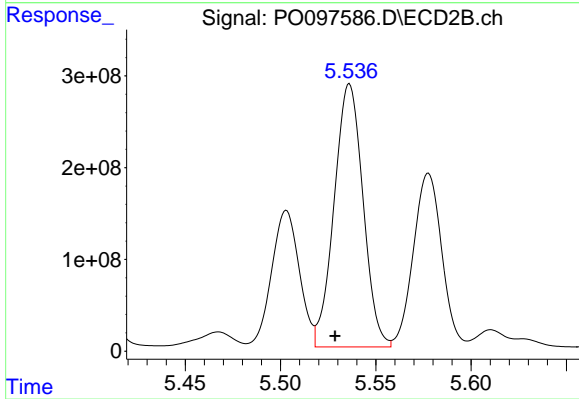
#25 AR-1248-5

R.T.: 5.578 min
 Delta R.T.: 0.009 min
 Response: 1966957228
 Conc: 87003.68 ng/ml



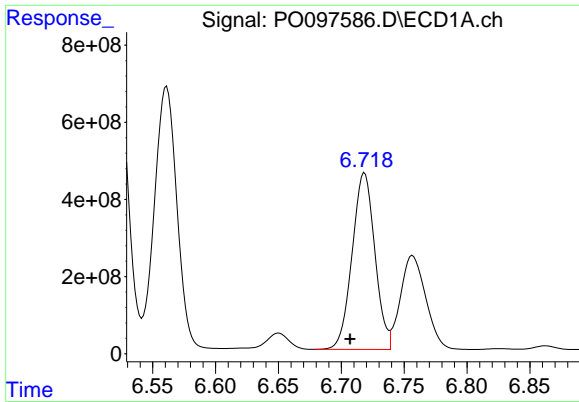
#26 AR-1254-1

R.T.: 6.495 min
 Delta R.T.: 0.009 min
 Response: 7836647373
 Conc: 71280.06 ng/ml



#26 AR-1254-1

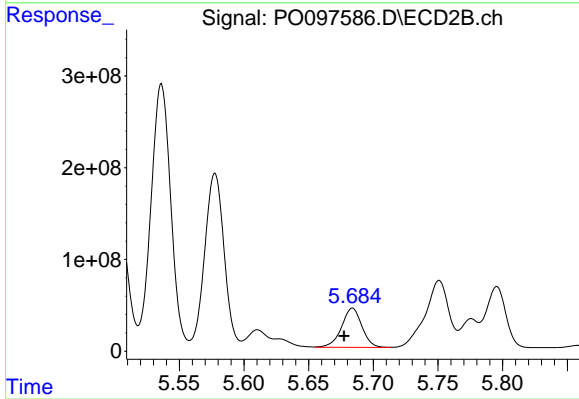
R.T.: 5.536 min
 Delta R.T.: 0.008 min
 Response: 3025200019
 Conc: 78382.41 ng/ml



#27 AR-1254-2

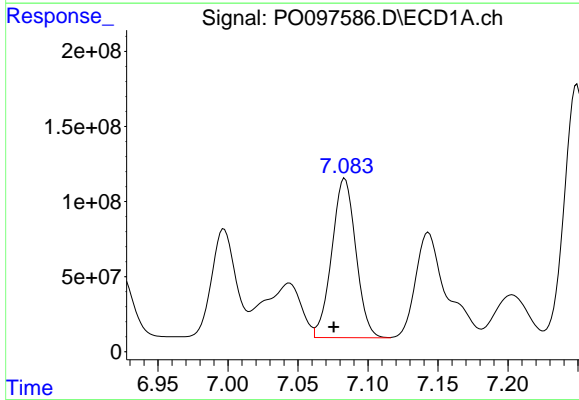
R.T.: 6.718 min
 Delta R.T.: 0.011 min
 Response: 5760109671
 Conc: 35346.71 ng/ml

Instrument :
 ECD_O
 ClientSampleId :



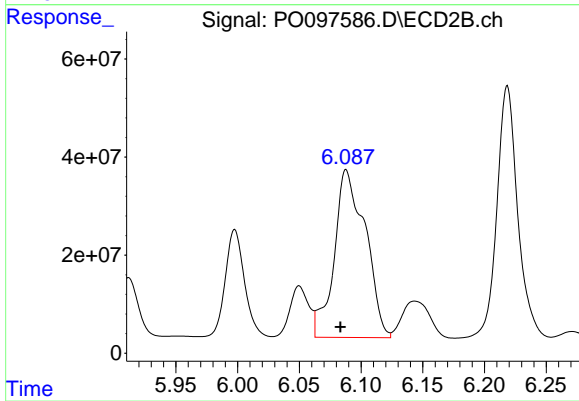
#27 AR-1254-2

R.T.: 5.684 min
 Delta R.T.: 0.006 min
 Response: 468868462
 Conc: 13765.61 ng/ml



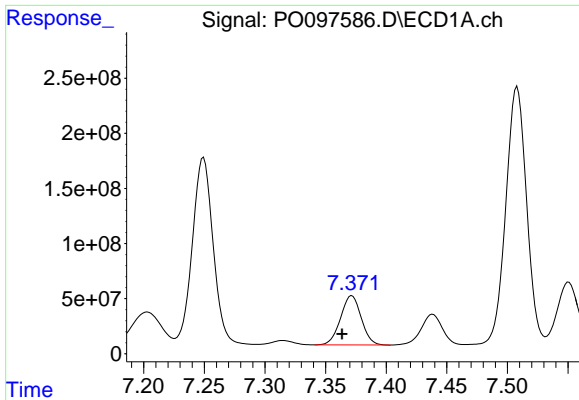
#28 AR-1254-3

R.T.: 7.083 min
 Delta R.T.: 0.008 min
 Response: 1266274368
 Conc: 7775.46 ng/ml



#28 AR-1254-3

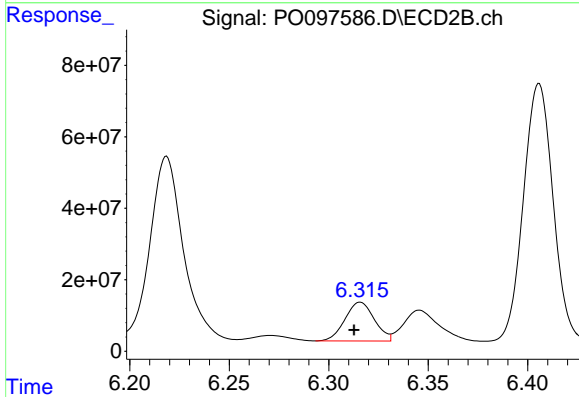
R.T.: 6.088 min
 Delta R.T.: 0.004 min
 Response: 602234105
 Conc: 11350.19 ng/ml



#29 AR-1254-4

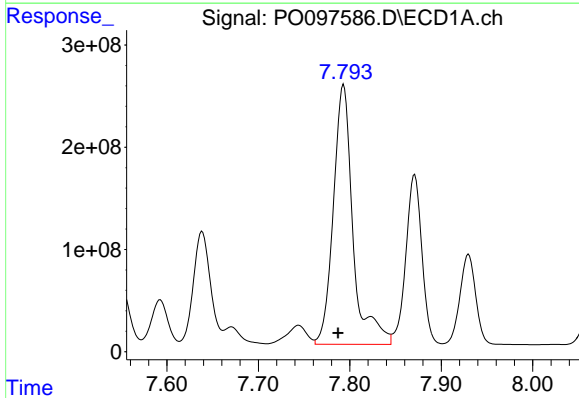
R.T.: 7.372 min
 Delta R.T.: 0.008 min
 Response: 530010386
 Conc: 5437.71 ng/ml

Instrument :
 ECD_O
 ClientSampleId :



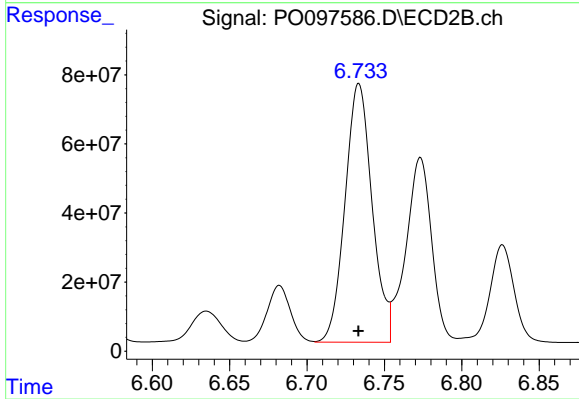
#29 AR-1254-4

R.T.: 6.316 min
 Delta R.T.: 0.003 min
 Response: 111502779
 Conc: 4089.07 ng/ml



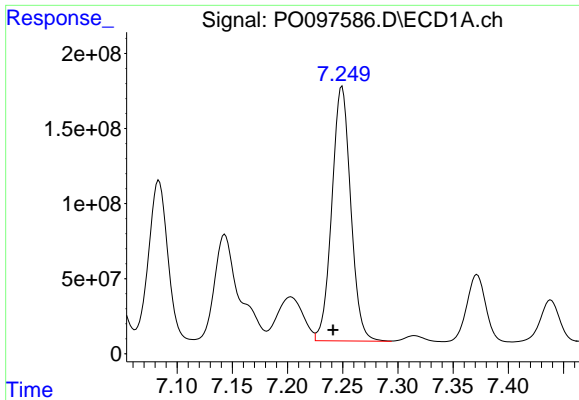
#30 AR-1254-5

R.T.: 7.793 min
 Delta R.T.: 0.006 min
 Response: 3791325007
 Conc: 33574.41 ng/ml



#30 AR-1254-5

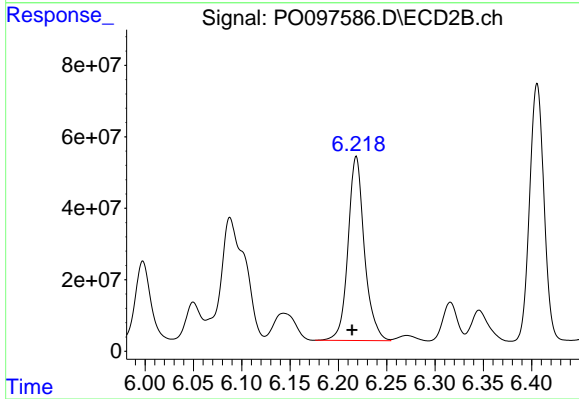
R.T.: 6.734 min
 Delta R.T.: 0.000 min
 Response: 911796928
 Conc: 20680.81 ng/ml



#31 AR-1260-1

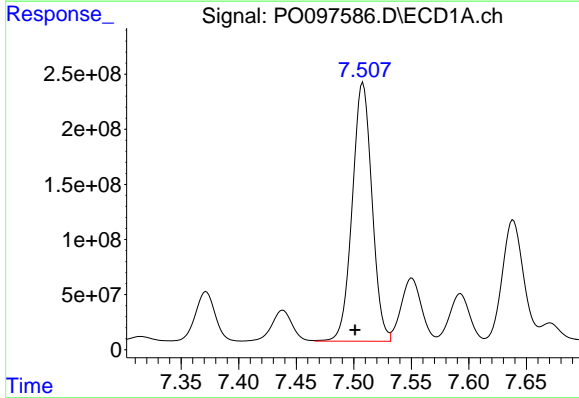
R.T.: 7.249 min
 Delta R.T.: 0.008 min
 Response: 2018079390
 Conc: 15810.01 ng/ml

Instrument :
 ECD_O
 ClientSampleId :



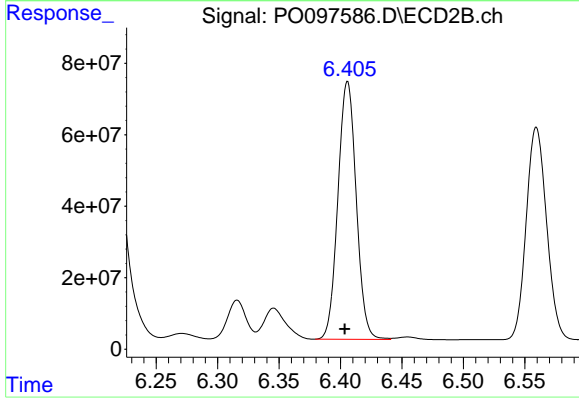
#31 AR-1260-1

R.T.: 6.218 min
 Delta R.T.: 0.004 min
 Response: 606194549
 Conc: 16230.40 ng/ml



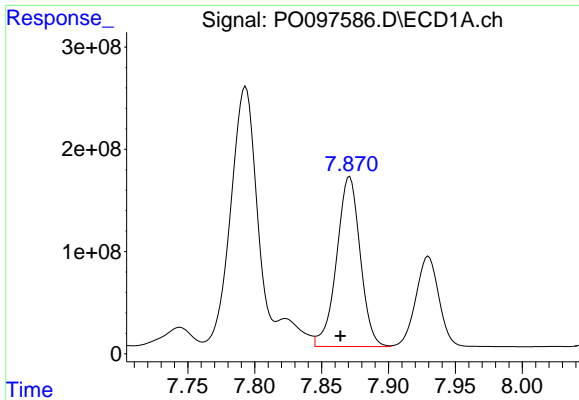
#32 AR-1260-2

R.T.: 7.508 min
 Delta R.T.: 0.007 min
 Response: 2811278535
 Conc: 20630.77 ng/ml



#32 AR-1260-2

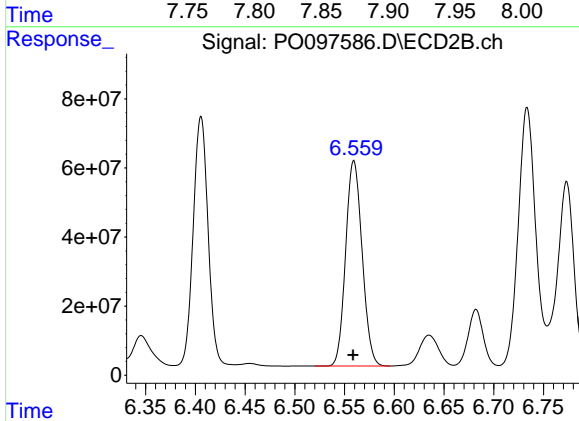
R.T.: 6.406 min
 Delta R.T.: 0.002 min
 Response: 748980526
 Conc: 17700.43 ng/ml



#33 AR-1260-3

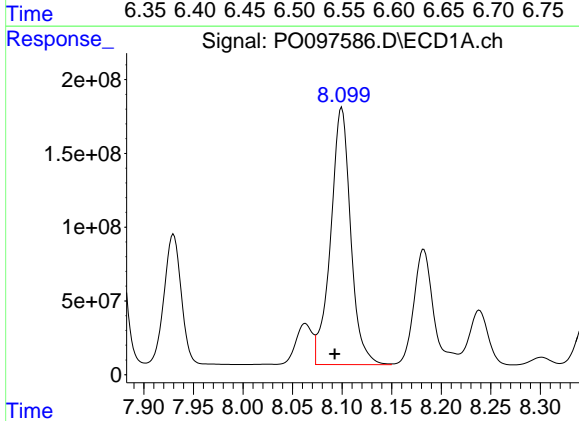
R.T.: 7.871 min
 Delta R.T.: 0.007 min
 Response: 2038692895
 Conc: 19287.89 ng/ml

Instrument :
 ECD_O
 ClientSampleId :



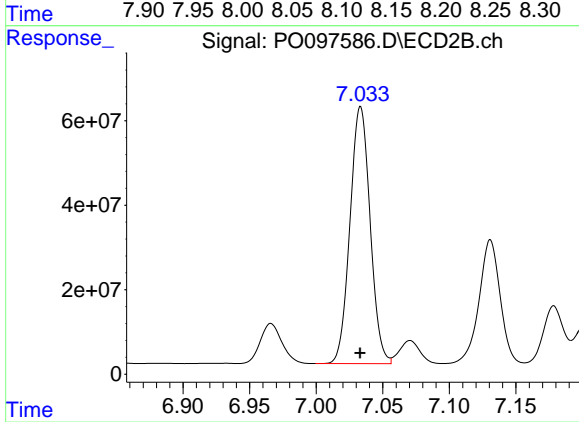
#33 AR-1260-3

R.T.: 6.559 min
 Delta R.T.: 0.000 min
 Response: 684877203
 Conc: 16361.91 ng/ml



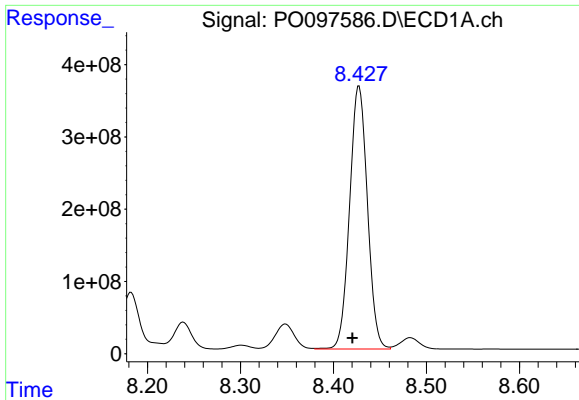
#34 AR-1260-4

R.T.: 8.100 min
 Delta R.T.: 0.007 min
 Response: 2455265093
 Conc: 21704.14 ng/ml



#34 AR-1260-4

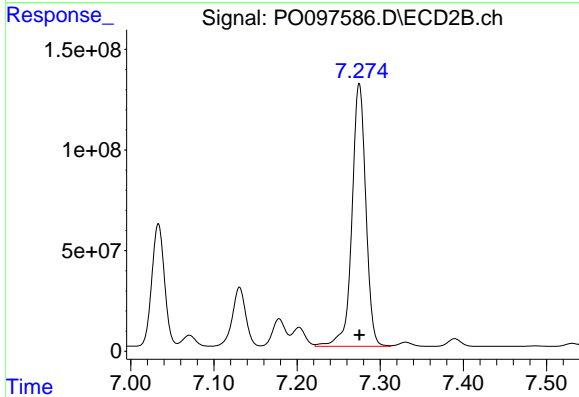
R.T.: 7.033 min
 Delta R.T.: 0.000 min
 Response: 641027901
 Conc: 19819.65 ng/ml



#35 AR-1260-5

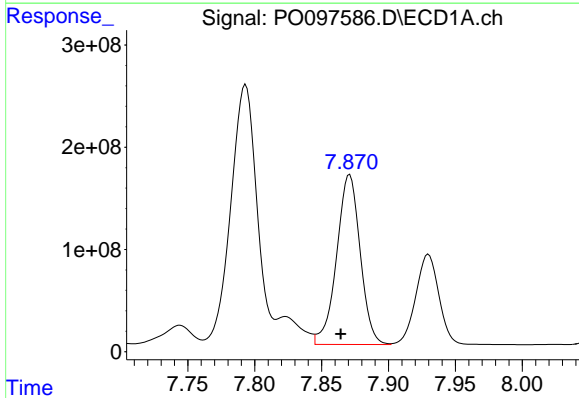
R.T.: 8.428 min
Delta R.T.: 0.007 min
Response: 4837414246
Conc: 25733.83 ng/ml

Instrument :
ECD_O
ClientSampleId :



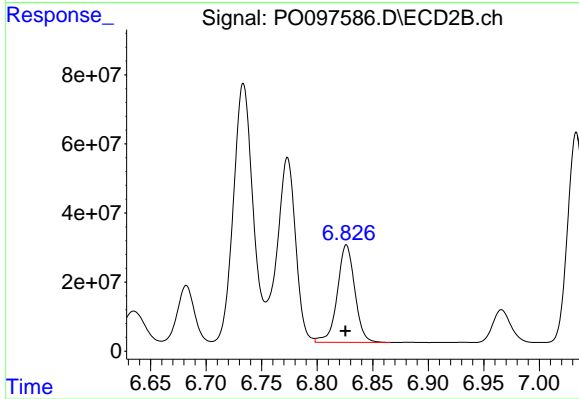
#35 AR-1260-5

R.T.: 7.275 min
Delta R.T.: 0.000 min
Response: 1513968261
Conc: 22929.23 ng/ml



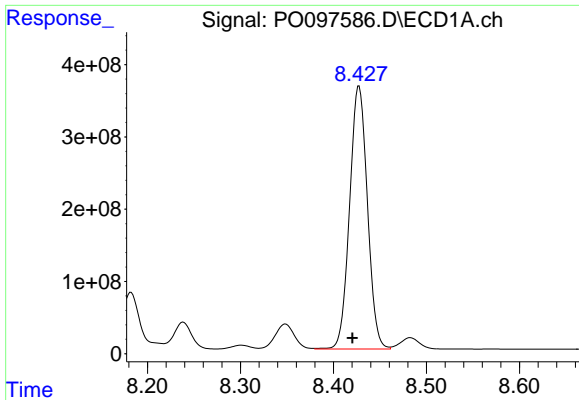
#36 AR-1262-1

R.T.: 7.871 min
Delta R.T.: 0.007 min
Response: 2038692895
Conc: 13547.75 ng/ml



#36 AR-1262-1

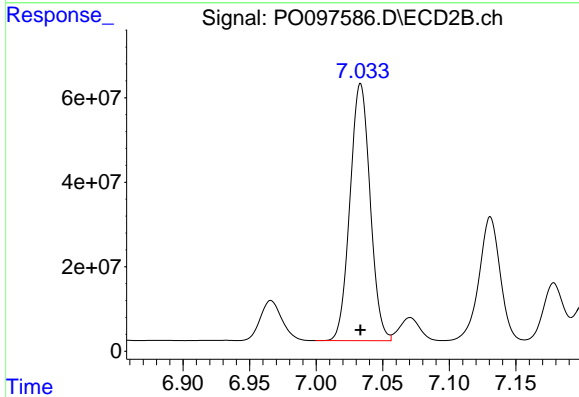
R.T.: 6.826 min
Delta R.T.: 0.000 min
Response: 309437349
Conc: 15418.78 ng/ml



#37 AR-1262-2

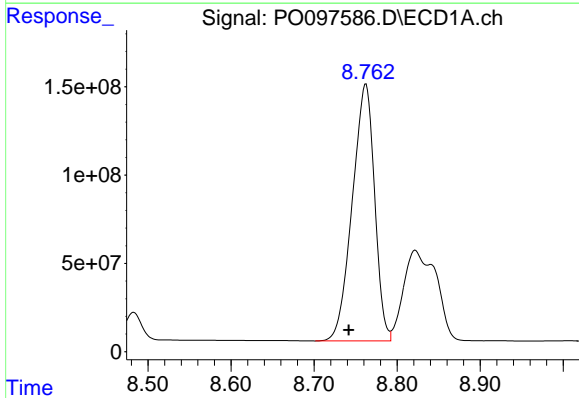
R.T.: 8.428 min
 Delta R.T.: 0.007 min
 Response: 4837414246
 Conc: 22089.92 ng/ml

Instrument :
 ECD_O
 ClientSampleId :



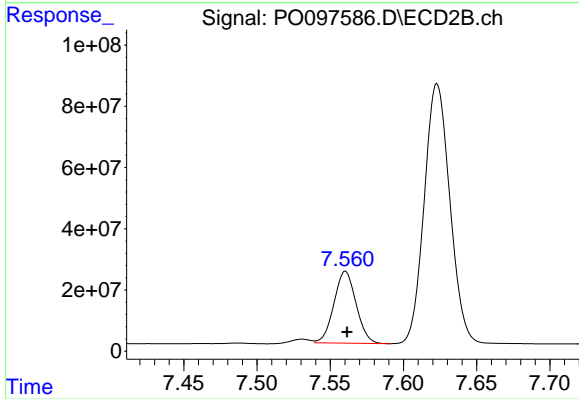
#37 AR-1262-2

R.T.: 7.033 min
 Delta R.T.: 0.000 min
 Response: 641027901
 Conc: 14671.77 ng/ml



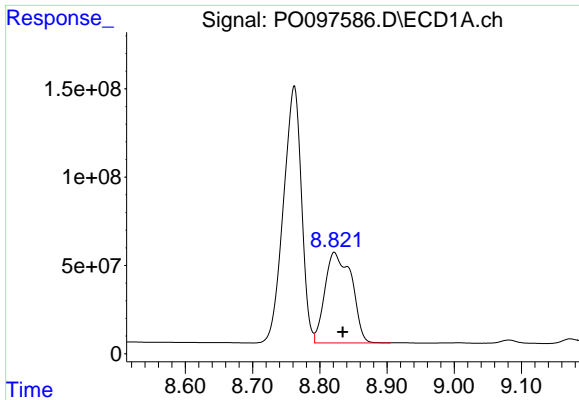
#38 AR-1262-3

R.T.: 8.762 min
 Delta R.T.: 0.020 min
 Response: 2714696921
 Conc: 17510.28 ng/ml



#38 AR-1262-3

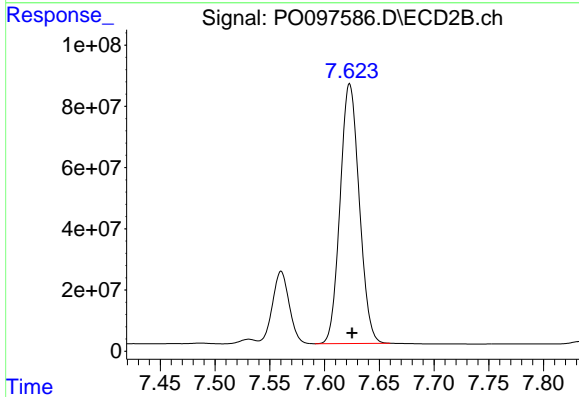
R.T.: 7.560 min
 Delta R.T.: -0.001 min
 Response: 246834931
 Conc: 7920.20 ng/ml



#39 AR-1262-4

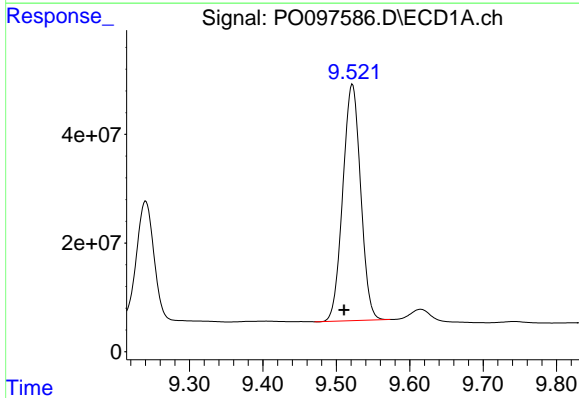
R.T.: 8.822 min
 Delta R.T.: -0.012 min
 Response: 1406909182
 Conc: 11285.94 ng/ml

Instrument :
 ECD_O
 ClientSampleId :



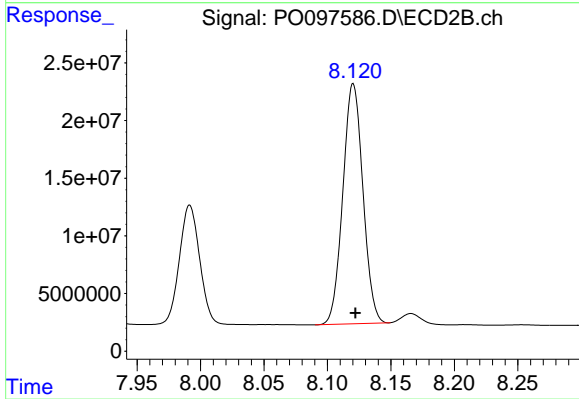
#39 AR-1262-4

R.T.: 7.623 min
 Delta R.T.: -0.002 min
 Response: 1032002131
 Conc: 18347.01 ng/ml



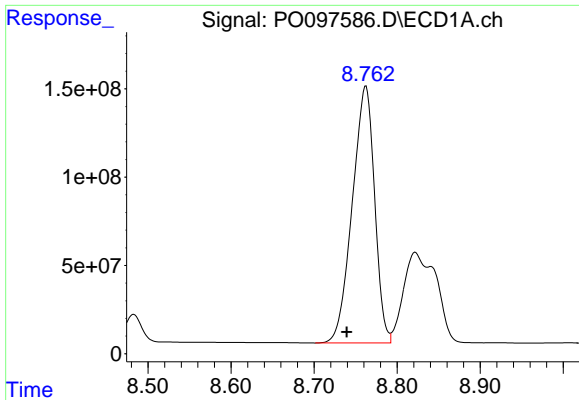
#40 AR-1262-5

R.T.: 9.522 min
 Delta R.T.: 0.011 min
 Response: 734954152
 Conc: 10687.18 ng/ml



#40 AR-1262-5

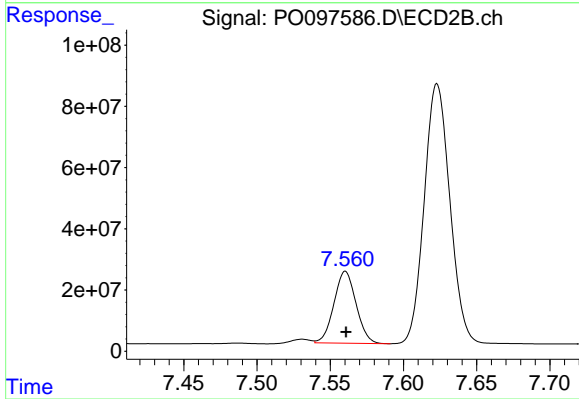
R.T.: 8.120 min
 Delta R.T.: -0.002 min
 Response: 229635125
 Conc: 9761.17 ng/ml



#41 AR-1268-1

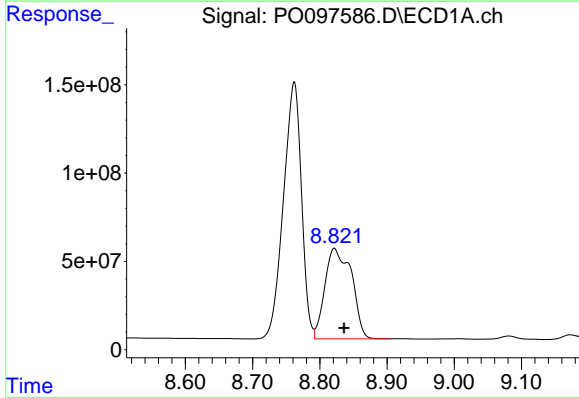
R.T.: 8.762 min
 Delta R.T.: 0.023 min
 Response: 2714696921
 Conc: 9558.38 ng/ml

Instrument :
 ECD_O
 ClientSampleId :



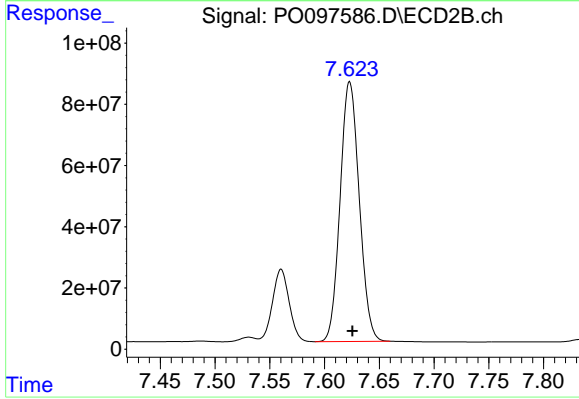
#41 AR-1268-1

R.T.: 7.560 min
 Delta R.T.: 0.000 min
 Response: 246834931
 Conc: 2578.67 ng/ml



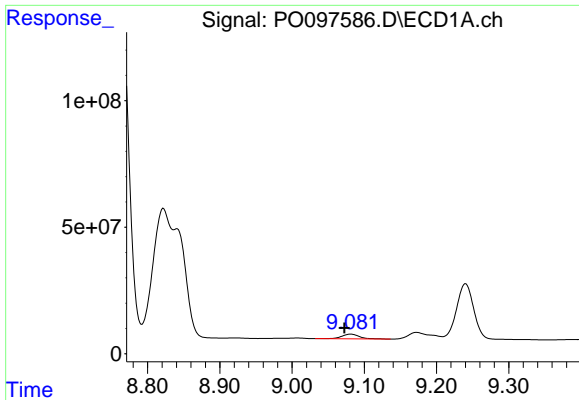
#42 AR-1268-2

R.T.: 8.822 min
 Delta R.T.: -0.014 min
 Response: 1406909182
 Conc: 5537.35 ng/ml



#42 AR-1268-2

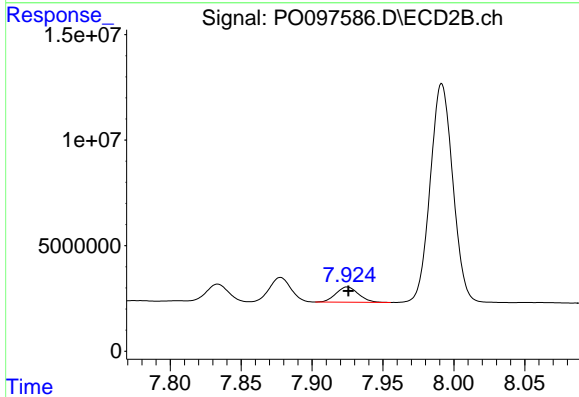
R.T.: 7.623 min
 Delta R.T.: -0.002 min
 Response: 1032002131
 Conc: 12449.53 ng/ml



#43 AR-1268-3

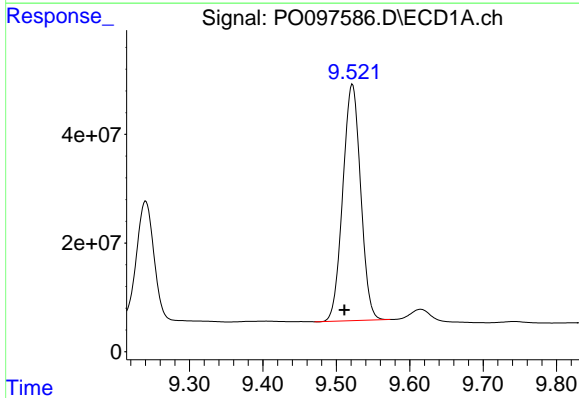
R.T.: 9.081 min
 Delta R.T.: 0.009 min
 Response: 31732257
 Conc: 140.70 ng/ml

Instrument :
 ECD_O
 ClientSampleId :



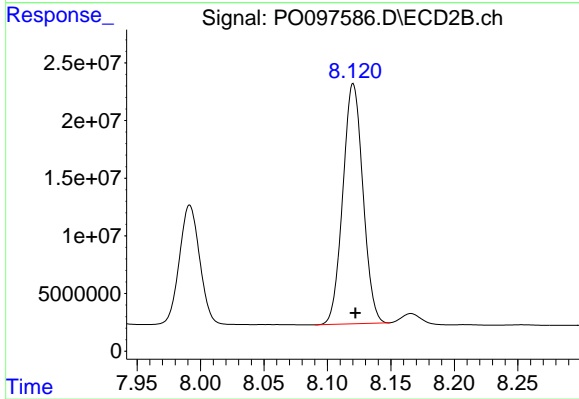
#43 AR-1268-3

R.T.: 7.925 min
 Delta R.T.: 0.000 min
 Response: 8008345
 Conc: 404.18 ng/ml



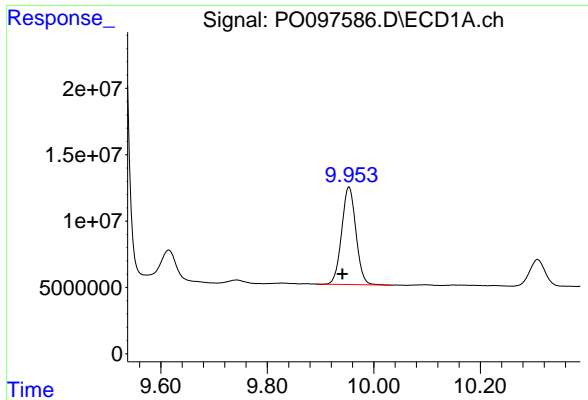
#44 AR-1268-4

R.T.: 9.522 min
 Delta R.T.: 0.011 min
 Response: 734954152
 Conc: 9548.72 ng/ml



#44 AR-1268-4

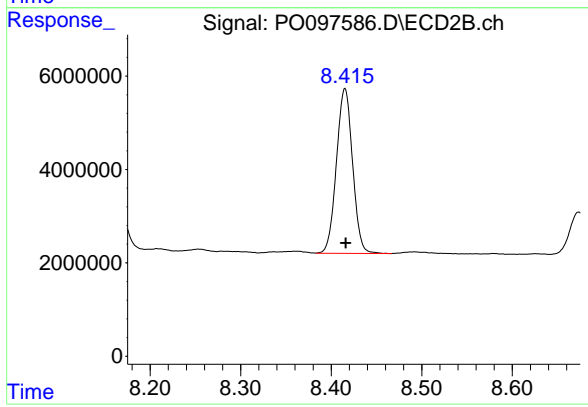
R.T.: 8.120 min
 Delta R.T.: -0.002 min
 Response: 229635125
 Conc: 8885.99 ng/ml



#45 AR-1268-5

R.T.: 9.953 min
Delta R.T.: 0.012 min
Response: 136505725
Conc: 197.68 ng/ml

Instrument :
ECD_O
ClientSampleId :



#45 AR-1268-5

R.T.: 8.415 min
Delta R.T.: 0.000 min
Response: 43764749
Conc: 191.98 ng/ml