

Data Path : Z:\pestpcbsrv\HPCHEM1\ECD\_0\Data\P0083123\  
 Data File : P0097613.D  
 Signal(s) : Signal #1: ECD1A.ch Signal #2: ECD2B.ch  
 Acq On : 01 Sep 2023 02:22  
 Operator : YP/AJ  
 Sample : AR1242CCC500  
 Misc :  
 ALS Vial : 4 Sample Multiplier: 1

Instrument :  
 ECD\_0  
 ClientSampleId :

Integration File signal 1: autoint1.e  
 Integration File signal 2: autoint2.e  
 Quant Time: Sep 01 04:22:11 2023  
 Quant Method : Z:\pestpcbsrv\HPCHEM1\ECD\_0\methods\P0082823.M  
 Quant Title : GC EXTRACTABLES  
 QLast Update : Tue Aug 29 10:29:21 2023  
 Response via : Initial Calibration  
 Integrator: ChemStation

Volume Inj. : 2 µl  
 Signal #1 Phase : ZB-MR1 Signal #2 Phase: ZB-MR2  
 Signal #1 Info : 30Mx0.32mmx 0.50µ Signal #2 Info : 30M x 0.32mm x 0.25µm

Compound	RT#1	RT#2	Resp#1	Resp#2	ng/ml	ng/ml
System Monitoring Compounds						
1) SA Tetrachlo...	4.444	3.625	161.4E6	35434102	48.349	52.524
2) SA Decachlor...	10.297	8.665	90987744	31111512	49.575	54.198
Target Compounds						
3) L1 AR-1016-1	5.622	4.716	41960904	10788677	466.189	495.605
4) L1 AR-1016-2	5.644	4.735	60756420	14935819	437.863	494.980
5) L1 AR-1016-3	5.707	4.912	39639499	7935151	437.194	491.238
6) L1 AR-1016-4	5.806	4.955	30857374	6449637	445.050	449.476
7) L1 AR-1016-5	6.103	5.169	30200803	8870591	425.188	485.044
8) L2 AR-1221-1	4.650	3.840	5786965	1269700	143.789	155.102
9) L2 AR-1221-2	4.742	3.926	7907581	1564692	263.066	269.973
10) L2 AR-1221-3	4.818	4.003	26373413	5624341	296.061	305.869
11) L3 AR-1232-1	4.818	4.003	26373413	5624341	357.580	373.310
12) L3 AR-1232-2	5.351	4.735	33758619	14935819	880.934	1069.884
13) L3 AR-1232-3	5.644	4.912	60756420	7935151	939.394	1129.797
14) L3 AR-1232-4	5.806	4.997	30857374	8227087	968.714	1163.568
15) L3 AR-1232-5	5.898	5.169	28126115	8870591	955.881	1126.975
16) L4 AR-1242-1	5.622	4.716	41960904	10788677	518.096	559.283
17) L4 AR-1242-2	5.644	4.735	60756420	14935819	486.491	548.715
18) L4 AR-1242-3	5.707	4.912	39639499	7935151	482.118	552.945
19) L4 AR-1242-4	5.806	4.997	30857374	8227087	491.558	519.438
20) L4 AR-1242-5	6.550	5.522	29844387	9978810	474.506	565.429
21) L5 AR-1248-1	5.622	4.716	41960904	10788677	711.463	785.103
22) L5 AR-1248-2	5.898	4.955	28126115	6449637	284.377	290.865
23) L5 AR-1248-3	6.103	4.997	30200803	8227087	291.495	357.815
24) L5 AR-1248-4	6.511	5.169	27323275	8870591	298.684	326.883
25) L5 AR-1248-5	6.550	5.564	29844387	8237293	293.982	364.357
26) L6 AR-1254-1	6.483	5.522	20636907	9978810	187.708	258.549 #
27) L6 AR-1254-2	6.708	5.672	23842969	2645895	146.312	77.681 #
28) L6 AR-1254-3	7.075	6.077	10983160	3035442	67.441	57.208
29) L6 AR-1254-4	7.364	6.306	6818044	2387384	69.951	87.551 #
30) L6 AR-1254-5	7.788	6.726	2293724	949692	20.312	21.540
31) L7 AR-1260-1	7.242	6.223	1313688	1166129	10.292	31.222 #
32) L7 AR-1260-2	7.502	6.395	2633624	446275	19.327	10.547 #
33) L7 AR-1260-3	7.856	6.547	607741	648271	5.750	15.487 #
34) L7 AR-1260-4	8.078	7.025	1668823	150310	14.752	4.647 #
35) L7 AR-1260-5	8.419	7.263	718100	444313	3.820	6.729 #
36) L8 AR-1262-1	7.856	6.817	607741	67541	4.039	3.365
37) L8 AR-1262-2	8.419	7.025	718100	150310	3.279	3.440
38) L8 AR-1262-3	8.752	7.551	456038	179212	2.942	5.750 #
39) L8 AR-1262-4	8.852	7.612	63431	196237	0.509	3.489 #
40) L8 AR-1262-5	9.499	8.107	145440	86848	2.115	3.692 #
41) L9 AR-1268-1	8.752	7.551	456038	179212	1.606	1.872

Data Path : Z:\pestpcbsrv\HPCHEM1\ECD\_0\Data\P0083123\  
 Data File : P0097613.D  
 Signal(s) : Signal #1: ECD1A.ch Signal #2: ECD2B.ch  
 Acq On : 01 Sep 2023 02:22  
 Operator : YP/AJ  
 Sample : AR1242CCC500  
 Misc :  
 ALS Vial : 4 Sample Multiplier: 1

Instrument :  
 ECD\_0  
 ClientSampleId :

Integration File signal 1: autoint1.e  
 Integration File signal 2: autoint2.e  
 Quant Time: Sep 01 04:22:11 2023  
 Quant Method : Z:\pestpcbsrv\HPCHEM1\ECD\_0\methods\P0082823.M  
 Quant Title : GC EXTRACTABLES  
 QLast Update : Tue Aug 29 10:29:21 2023  
 Response via : Initial Calibration  
 Integrator: ChemStation

Volume Inj. : 2 µl  
 Signal #1 Phase : ZB-MR1 Signal #2 Phase: ZB-MR2  
 Signal #1 Info : 30Mx0.32mmx 0.50µ Signal #2 Info : 30M x 0.32mm x 0.25µm

	Compound	RT#1	RT#2	Resp#1	Resp#2	ng/ml	ng/ml
42)	L9 AR-1268-2	8.852	7.612	63431	196237	0.250	2.367 #
43)	L9 AR-1268-3	9.075	7.911	163299	16968	0.724	0.856
44)	L9 AR-1268-4	9.499	8.107	145440	86848	1.890	3.361 #
45)	L9 AR-1268-5	9.942	8.406	761561	325921	1.103	1.430 #

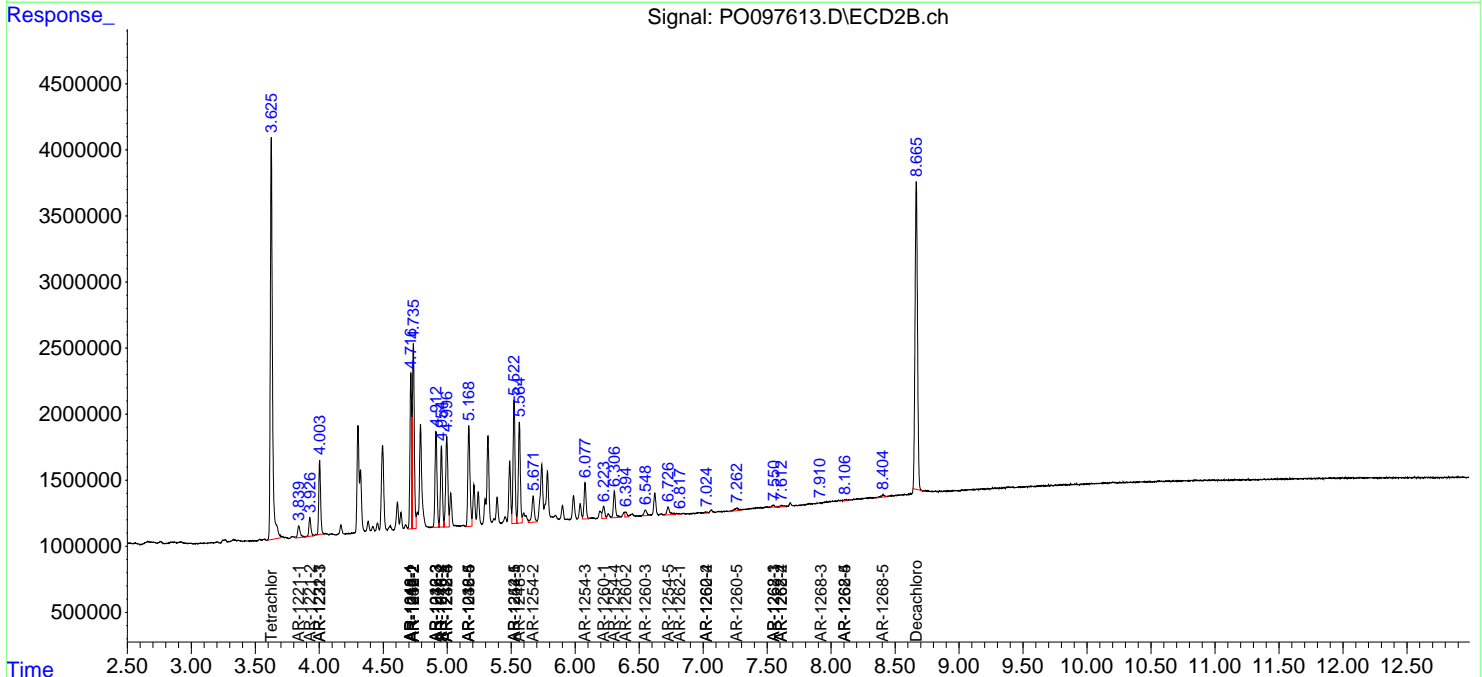
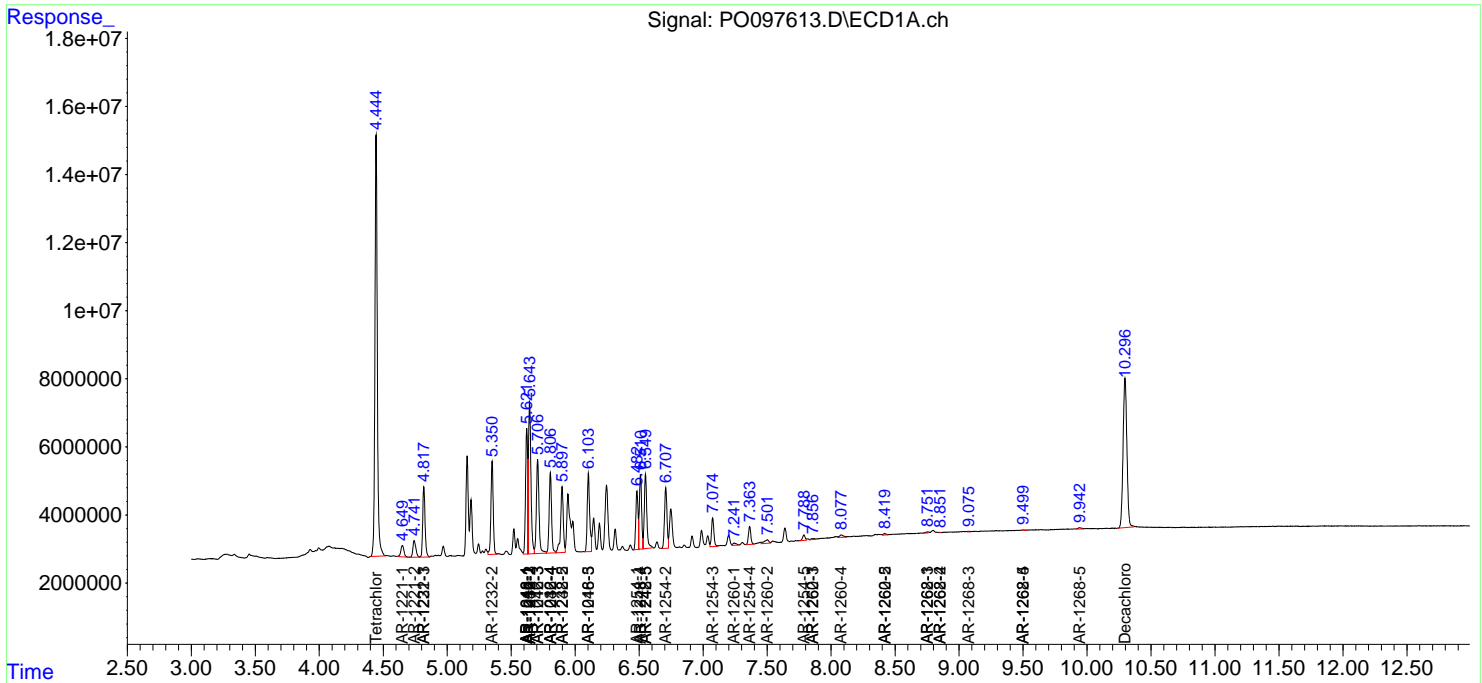
(f)=RT Delta > 1/2 Window (#)=Amounts differ by > 25% (m)=manual int.

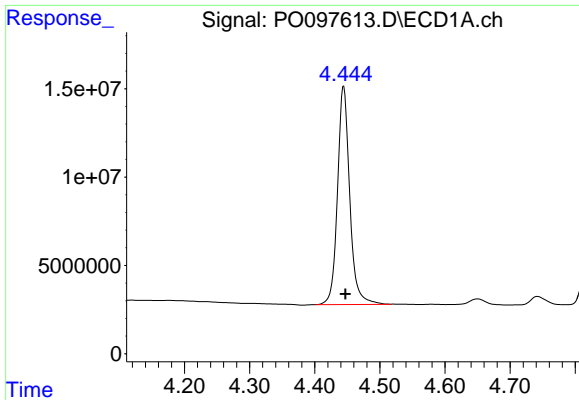
Data Path : Z:\pestpcbsrv\HPCHEM1\ECD\_O\Data\P0083123\  
 Data File : P0097613.D  
 Signal(s) : Signal #1: ECD1A.ch Signal #2: ECD2B.ch  
 Acq On : 01 Sep 2023 02:22  
 Operator : YP/AJ  
 Sample : AR1242CCC500  
 Misc :  
 ALS Vial : 4 Sample Multiplier: 1

Instrument :  
 ECD\_O  
 ClientSampleId :

Integration File signal 1: autoint1.e  
 Integration File signal 2: autoint2.e  
 Quant Time: Sep 01 04:22:11 2023  
 Quant Method : Z:\pestpcbsrv\HPCHEM1\ECD\_O\methods\P0082823.M  
 Quant Title : GC EXTRACTABLES  
 QLast Update : Tue Aug 29 10:29:21 2023  
 Response via : Initial Calibration  
 Integrator: ChemStation

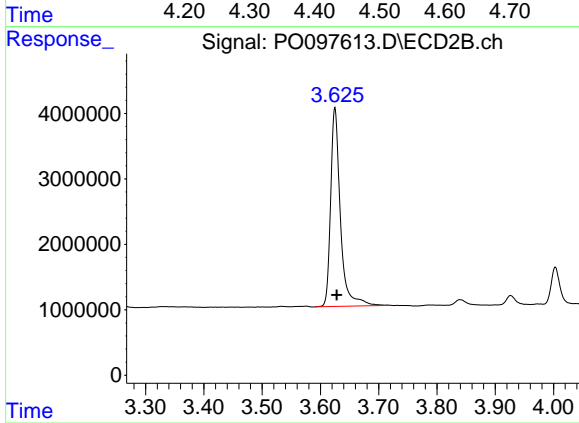
Volume Inj. : 2 µl  
 Signal #1 Phase : ZB-MR1 Signal #2 Phase: ZB-MR2  
 Signal #1 Info : 30Mx0.32mmx 0.50µ Signal #2 Info : 30M x 0.32mm x 0.25µm



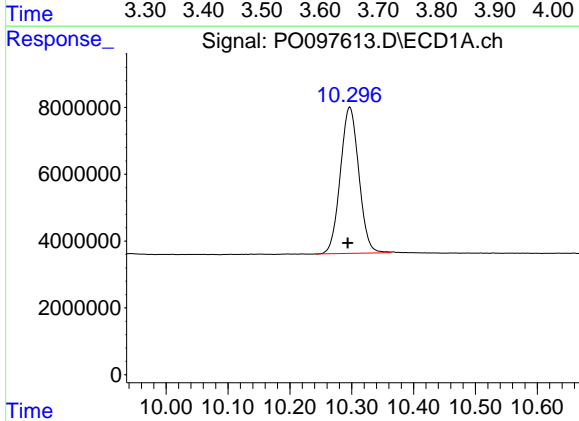


#1 Tetrachloro-m-xylene  
 R.T.: 4.444 min  
 Delta R.T.: -0.003 min  
 Response: 161370473  
 Conc: 48.35 ng/ml

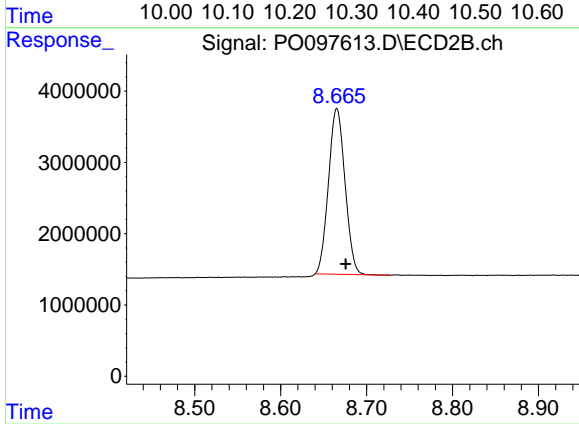
Instrument :  
 ECD\_O  
 ClientSampleId :



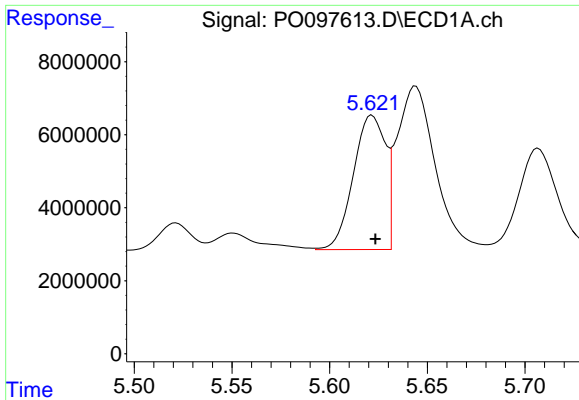
#1 Tetrachloro-m-xylene  
 R.T.: 3.625 min  
 Delta R.T.: -0.003 min  
 Response: 35434102  
 Conc: 52.52 ng/ml



#2 Decachlorobiphenyl  
 R.T.: 10.297 min  
 Delta R.T.: 0.003 min  
 Response: 90987744  
 Conc: 49.57 ng/ml



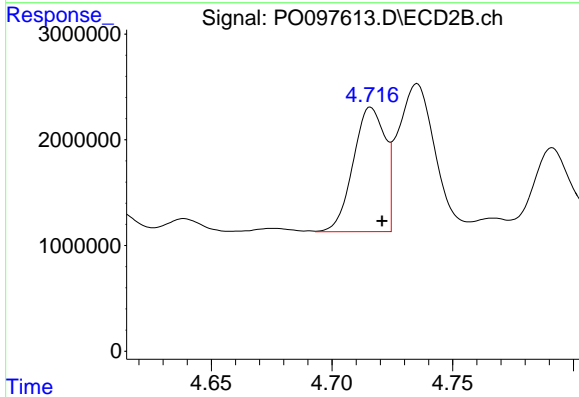
#2 Decachlorobiphenyl  
 R.T.: 8.665 min  
 Delta R.T.: -0.010 min  
 Response: 31111512  
 Conc: 54.20 ng/ml



#3 AR-1016-1

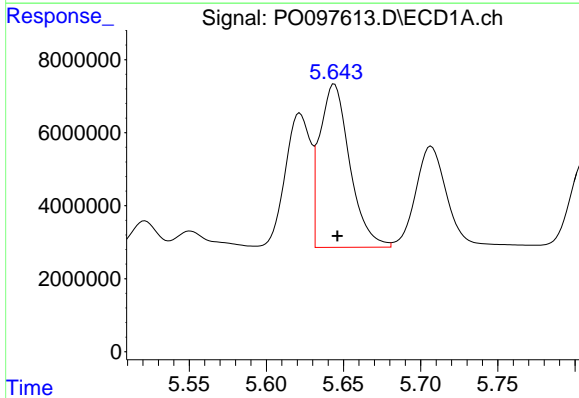
R.T.: 5.622 min  
 Delta R.T.: -0.002 min  
 Response: 41960904  
 Conc: 466.19 ng/ml

Instrument :  
 ECD\_O  
 ClientSampleId :



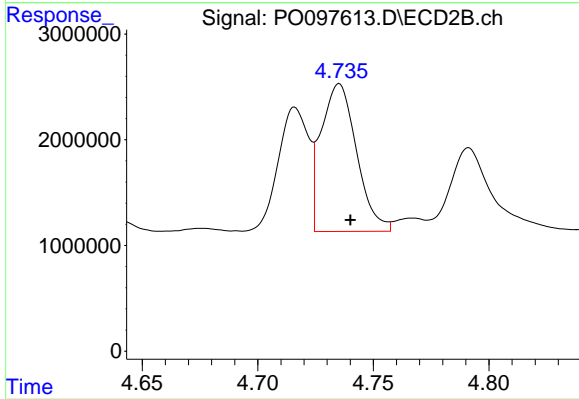
#3 AR-1016-1

R.T.: 4.716 min  
 Delta R.T.: -0.005 min  
 Response: 10788677  
 Conc: 495.61 ng/ml



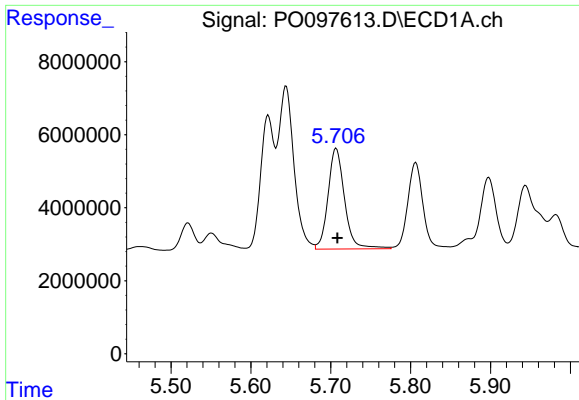
#4 AR-1016-2

R.T.: 5.644 min  
 Delta R.T.: -0.002 min  
 Response: 60756420  
 Conc: 437.86 ng/ml



#4 AR-1016-2

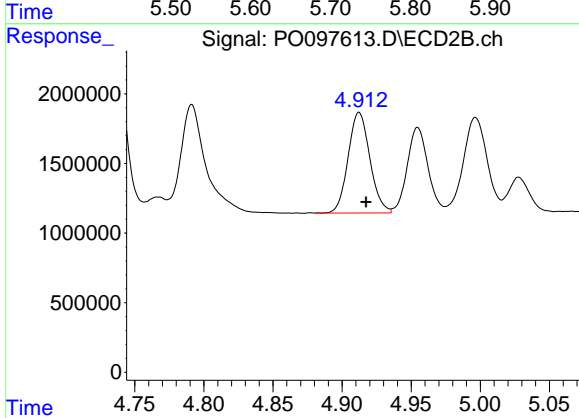
R.T.: 4.735 min  
 Delta R.T.: -0.005 min  
 Response: 14935819  
 Conc: 494.98 ng/ml



#5 AR-1016-3

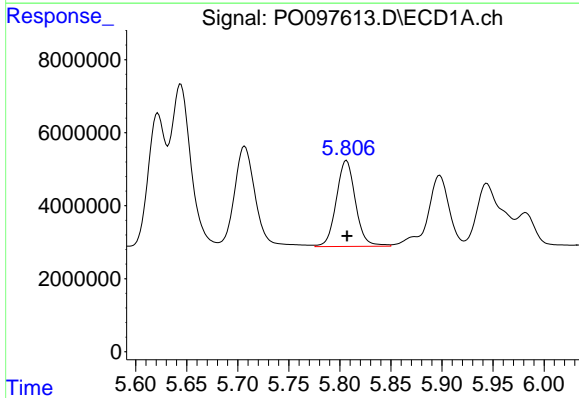
R.T.: 5.707 min  
 Delta R.T.: -0.002 min  
 Response: 39639499  
 Conc: 437.19 ng/ml

Instrument :  
 ECD\_O  
 ClientSampleId :



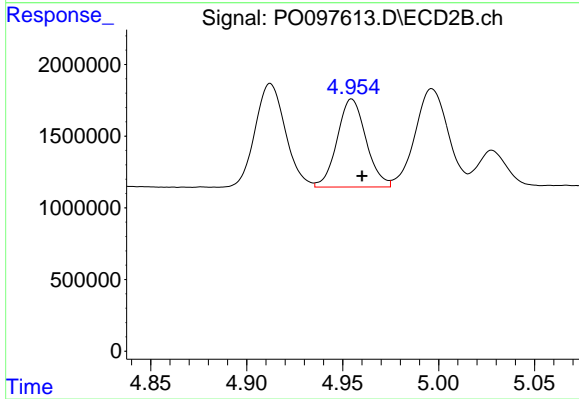
#5 AR-1016-3

R.T.: 4.912 min  
 Delta R.T.: -0.005 min  
 Response: 7935151  
 Conc: 491.24 ng/ml



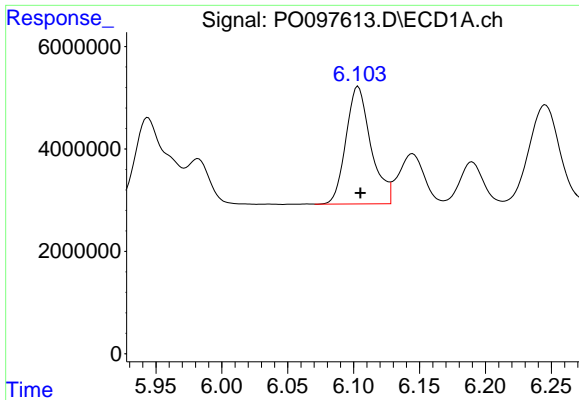
#6 AR-1016-4

R.T.: 5.806 min  
 Delta R.T.: 0.000 min  
 Response: 30857374  
 Conc: 445.05 ng/ml



#6 AR-1016-4

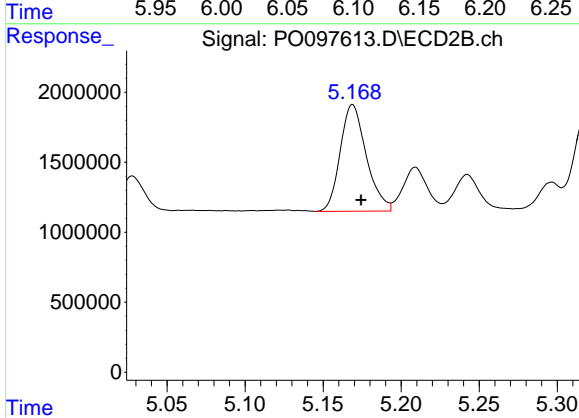
R.T.: 4.955 min  
 Delta R.T.: -0.005 min  
 Response: 6449637  
 Conc: 449.48 ng/ml



#7 AR-1016-5

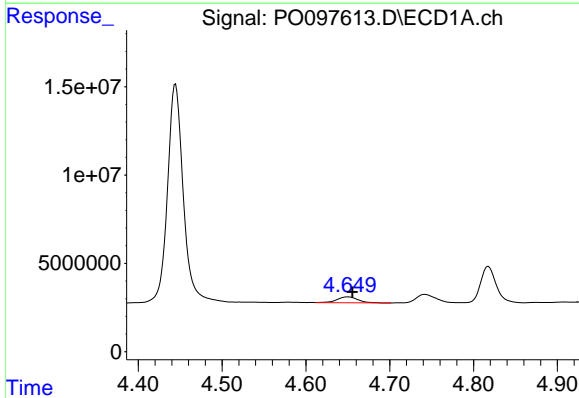
R.T.: 6.103 min  
 Delta R.T.: -0.002 min  
 Response: 30200803  
 Conc: 425.19 ng/ml

Instrument :  
 ECD\_O  
 ClientSampleId :



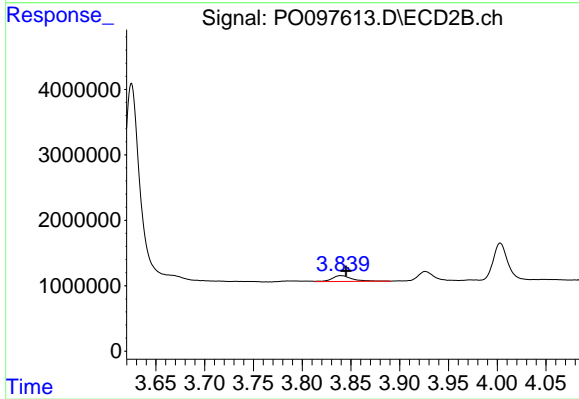
#7 AR-1016-5

R.T.: 5.169 min  
 Delta R.T.: -0.005 min  
 Response: 8870591  
 Conc: 485.04 ng/ml



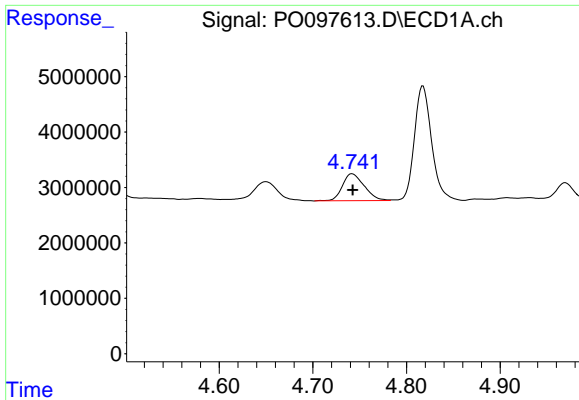
#8 AR-1221-1

R.T.: 4.650 min  
 Delta R.T.: -0.005 min  
 Response: 5786965  
 Conc: 143.79 ng/ml



#8 AR-1221-1

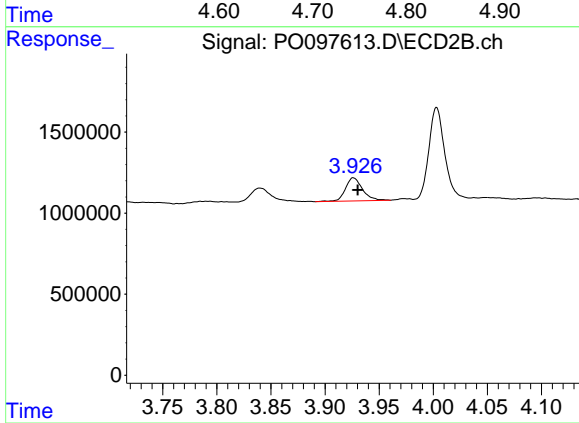
R.T.: 3.840 min  
 Delta R.T.: -0.005 min  
 Response: 1269700  
 Conc: 155.10 ng/ml



#9 AR-1221-2

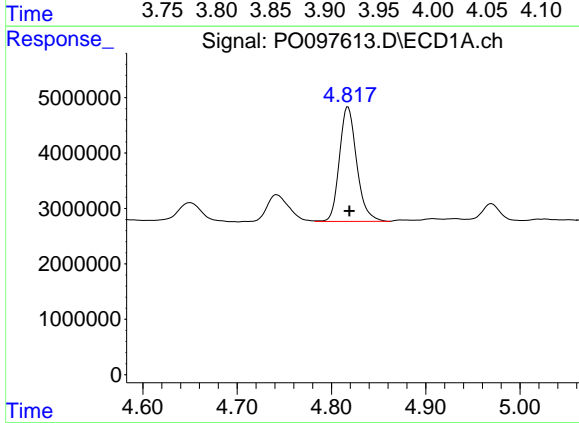
R.T.: 4.742 min  
 Delta R.T.: 0.000 min  
 Response: 7907581  
 Conc: 263.07 ng/ml

Instrument :  
 ECD\_O  
 ClientSampleId :



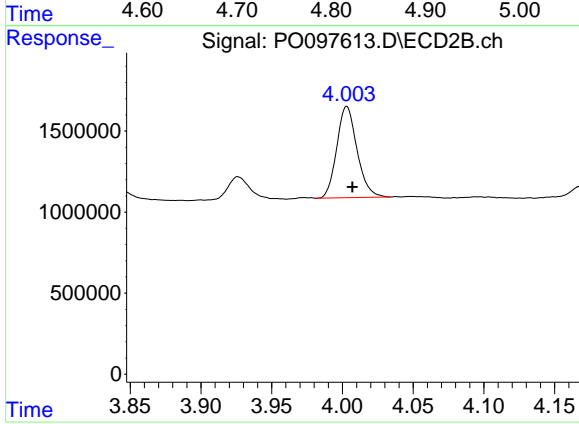
#9 AR-1221-2

R.T.: 3.926 min  
 Delta R.T.: -0.004 min  
 Response: 1564692  
 Conc: 269.97 ng/ml



#10 AR-1221-3

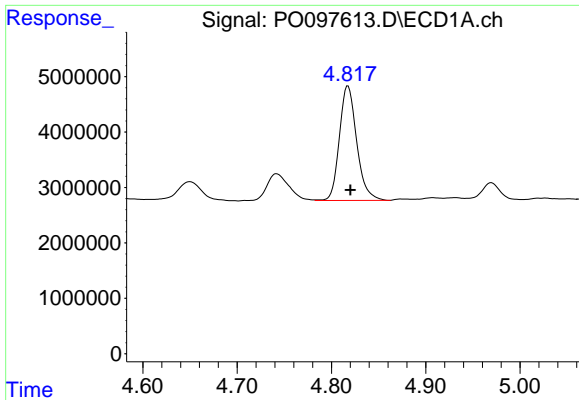
R.T.: 4.818 min  
 Delta R.T.: -0.002 min  
 Response: 26373413  
 Conc: 296.06 ng/ml



#10 AR-1221-3

R.T.: 4.003 min  
 Delta R.T.: -0.004 min  
 Response: 5624341  
 Conc: 305.87 ng/ml

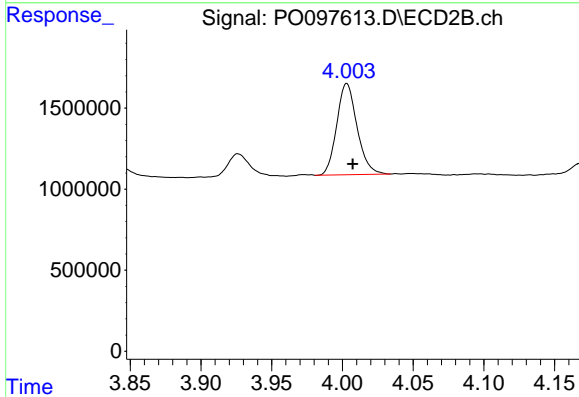




#11 AR-1232-1

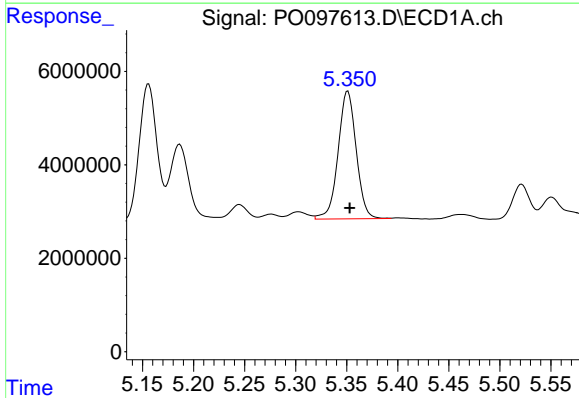
R.T.: 4.818 min  
 Delta R.T.: -0.002 min  
 Response: 26373413  
 Conc: 357.58 ng/ml

Instrument :  
 ECD\_O  
 ClientSampleId :



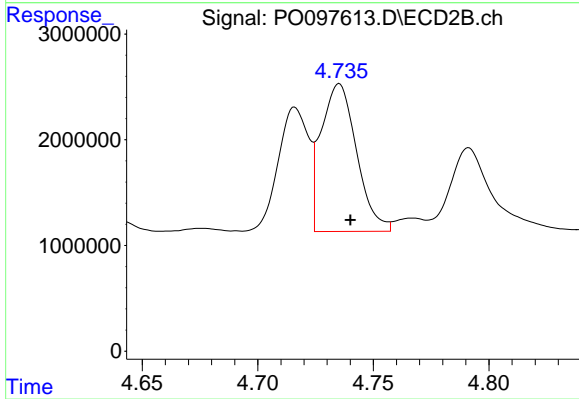
#11 AR-1232-1

R.T.: 4.003 min  
 Delta R.T.: -0.004 min  
 Response: 5624341  
 Conc: 373.31 ng/ml



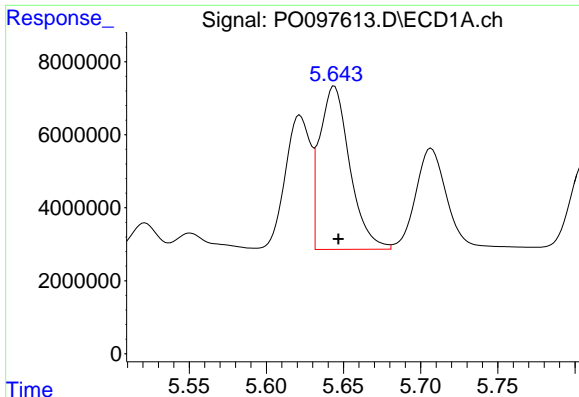
#12 AR-1232-2

R.T.: 5.351 min  
 Delta R.T.: -0.002 min  
 Response: 33758619  
 Conc: 880.93 ng/ml



#12 AR-1232-2

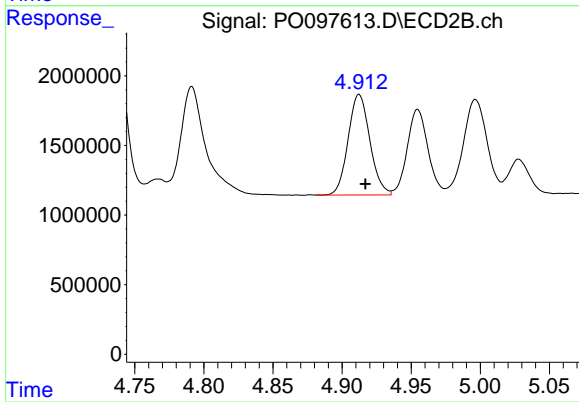
R.T.: 4.735 min  
 Delta R.T.: -0.005 min  
 Response: 14935819  
 Conc: 1069.88 ng/ml



#13 AR-1232-3

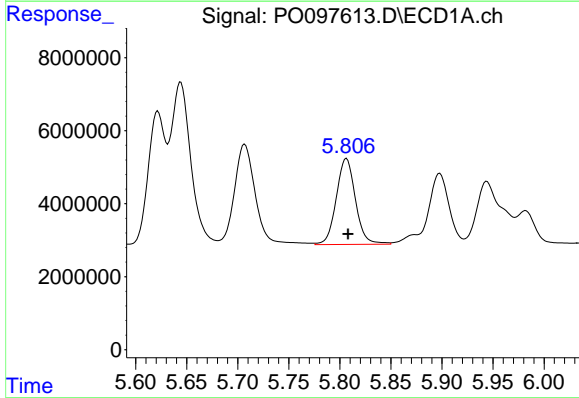
R.T.: 5.644 min  
 Delta R.T.: -0.003 min  
 Response: 60756420  
 Conc: 939.39 ng/ml

Instrument :  
 ECD\_O  
 ClientSampleId :



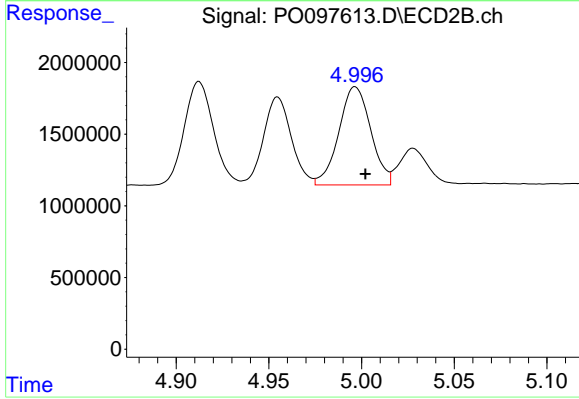
#13 AR-1232-3

R.T.: 4.912 min  
 Delta R.T.: -0.005 min  
 Response: 7935151  
 Conc: 1129.80 ng/ml



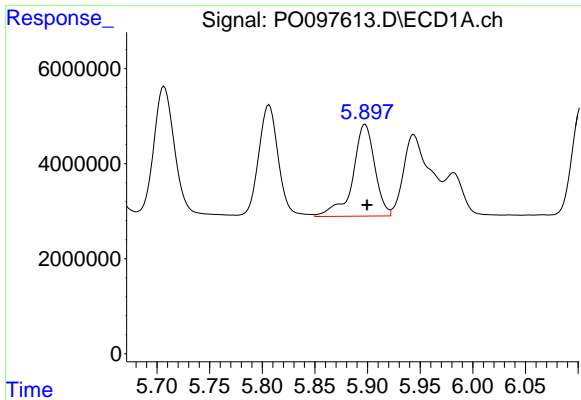
#14 AR-1232-4

R.T.: 5.806 min  
 Delta R.T.: -0.002 min  
 Response: 30857374  
 Conc: 968.71 ng/ml



#14 AR-1232-4

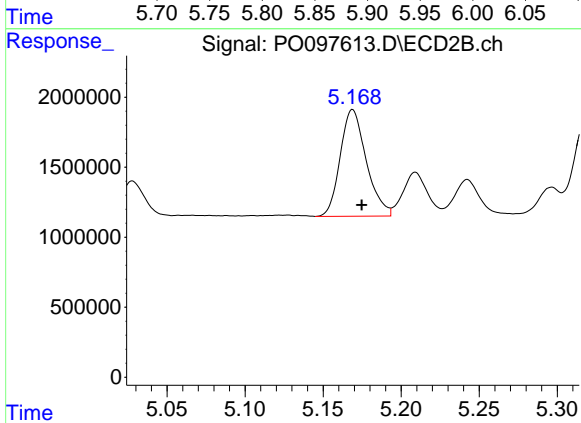
R.T.: 4.997 min  
 Delta R.T.: -0.005 min  
 Response: 8227087  
 Conc: 1163.57 ng/ml



#15 AR-1232-5

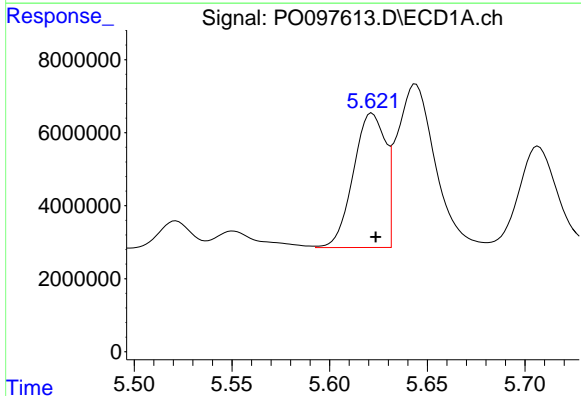
R.T.: 5.898 min  
 Delta R.T.: -0.002 min  
 Response: 28126115  
 Conc: 955.88 ng/ml

Instrument :  
 ECD\_O  
 ClientSampleId :



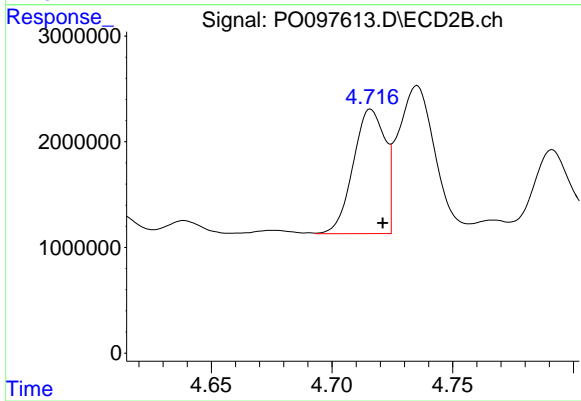
#15 AR-1232-5

R.T.: 5.169 min  
 Delta R.T.: -0.006 min  
 Response: 8870591  
 Conc: 1126.97 ng/ml



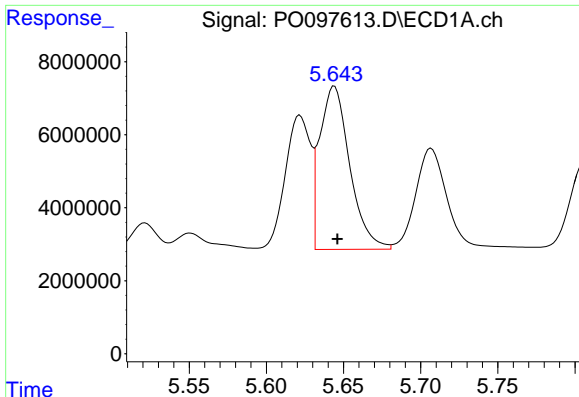
#16 AR-1242-1

R.T.: 5.622 min  
 Delta R.T.: -0.002 min  
 Response: 41960904  
 Conc: 518.10 ng/ml



#16 AR-1242-1

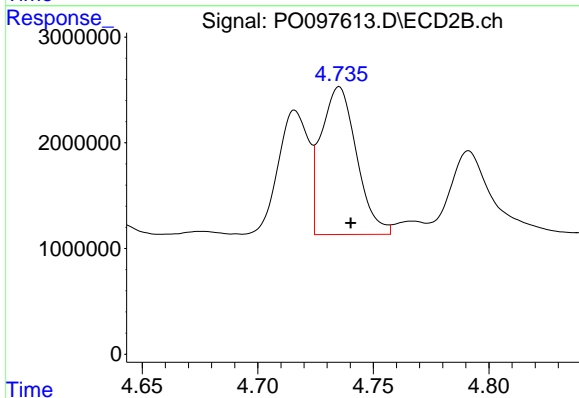
R.T.: 4.716 min  
 Delta R.T.: -0.005 min  
 Response: 10788677  
 Conc: 559.28 ng/ml



#17 AR-1242-2

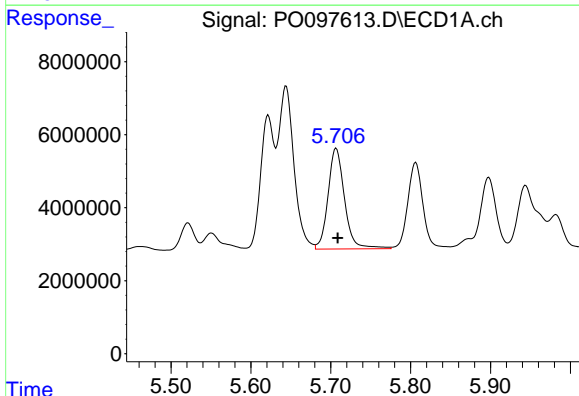
R.T.: 5.644 min  
 Delta R.T.: -0.002 min  
 Response: 60756420  
 Conc: 486.49 ng/ml

Instrument :  
 ECD\_O  
 ClientSampleId :



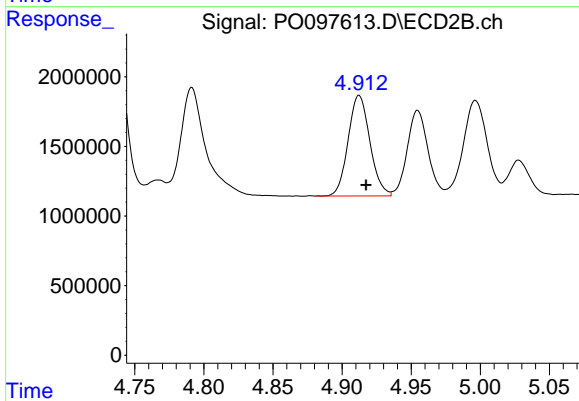
#17 AR-1242-2

R.T.: 4.735 min  
 Delta R.T.: -0.005 min  
 Response: 14935819  
 Conc: 548.71 ng/ml



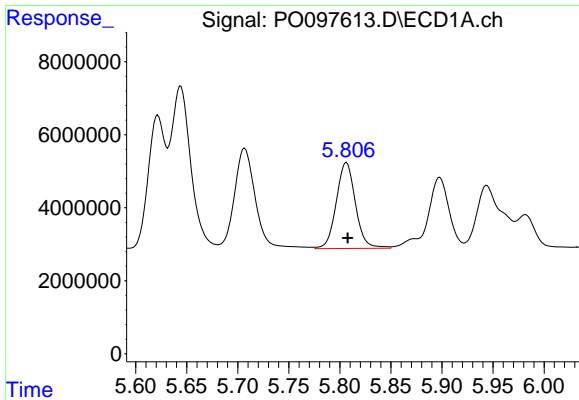
#18 AR-1242-3

R.T.: 5.707 min  
 Delta R.T.: -0.002 min  
 Response: 39639499  
 Conc: 482.12 ng/ml



#18 AR-1242-3

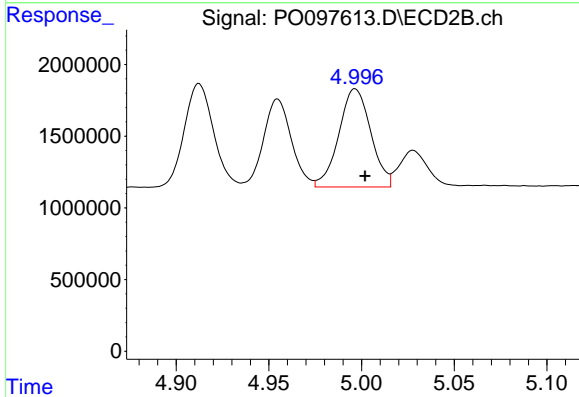
R.T.: 4.912 min  
 Delta R.T.: -0.005 min  
 Response: 7935151  
 Conc: 552.95 ng/ml



#19 AR-1242-4

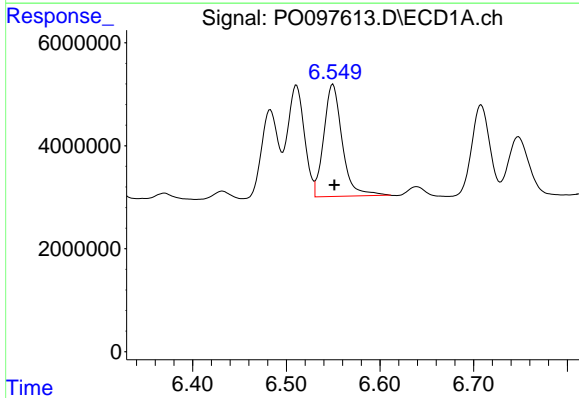
R.T.: 5.806 min  
 Delta R.T.: -0.001 min  
 Response: 30857374  
 Conc: 491.56 ng/ml

Instrument :  
 ECD\_O  
 ClientSampleId :



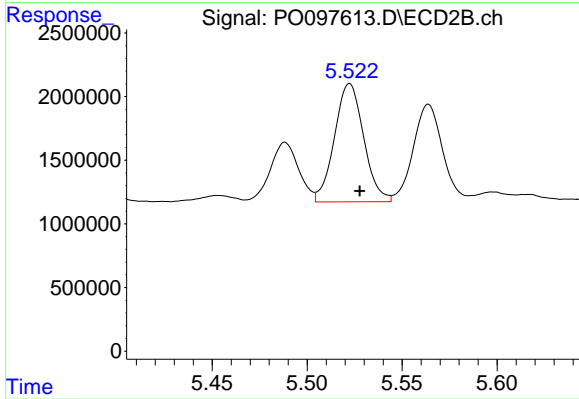
#19 AR-1242-4

R.T.: 4.997 min  
 Delta R.T.: -0.005 min  
 Response: 8227087  
 Conc: 519.44 ng/ml



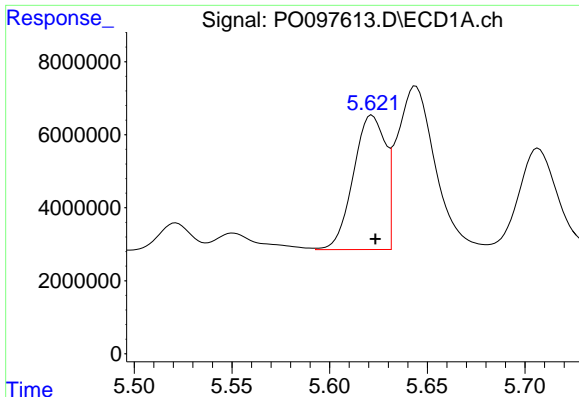
#20 AR-1242-5

R.T.: 6.550 min  
 Delta R.T.: -0.002 min  
 Response: 29844387  
 Conc: 474.51 ng/ml



#20 AR-1242-5

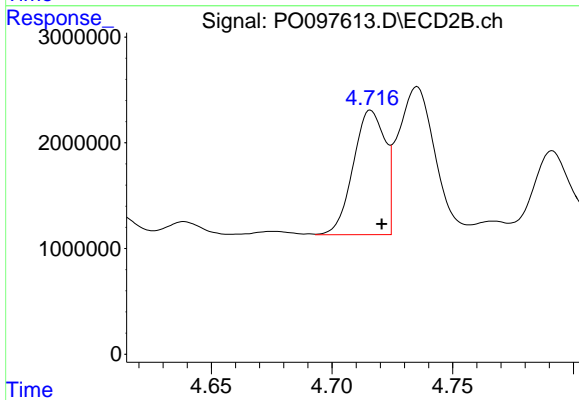
R.T.: 5.522 min  
 Delta R.T.: -0.005 min  
 Response: 9978810  
 Conc: 565.43 ng/ml



#21 AR-1248-1

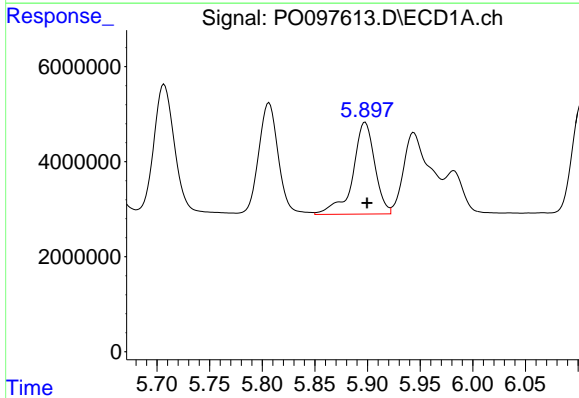
R.T.: 5.622 min  
 Delta R.T.: -0.002 min  
 Response: 41960904  
 Conc: 711.46 ng/ml

Instrument :  
 ECD\_O  
 ClientSampleId :



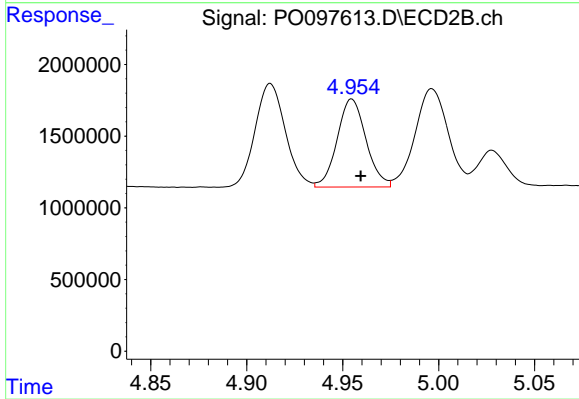
#21 AR-1248-1

R.T.: 4.716 min  
 Delta R.T.: -0.005 min  
 Response: 10788677  
 Conc: 785.10 ng/ml



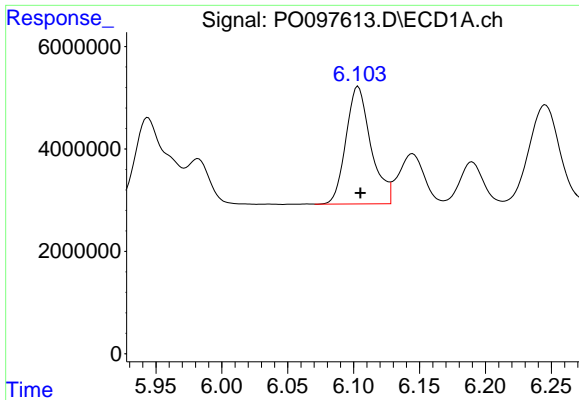
#22 AR-1248-2

R.T.: 5.898 min  
 Delta R.T.: -0.002 min  
 Response: 28126115  
 Conc: 284.38 ng/ml



#22 AR-1248-2

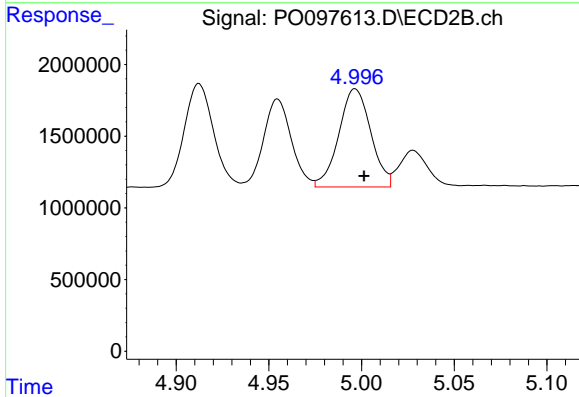
R.T.: 4.955 min  
 Delta R.T.: -0.005 min  
 Response: 6449637  
 Conc: 290.87 ng/ml



#23 AR-1248-3

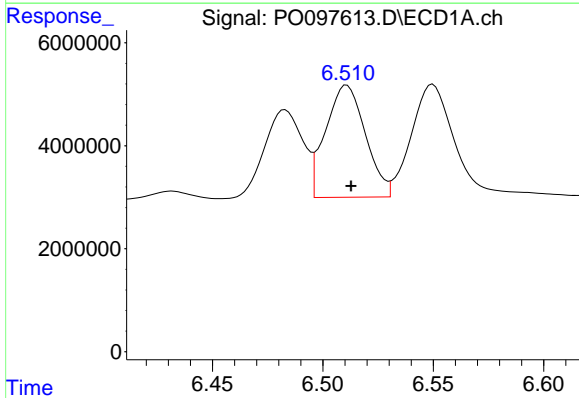
R.T.: 6.103 min  
 Delta R.T.: -0.002 min  
 Response: 30200803  
 Conc: 291.50 ng/ml

Instrument :  
 ECD\_O  
 ClientSampleId :



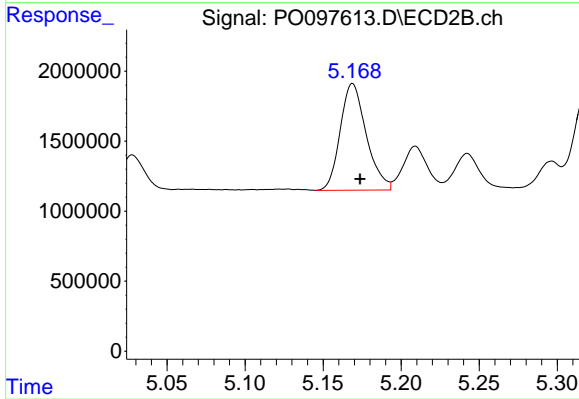
#23 AR-1248-3

R.T.: 4.997 min  
 Delta R.T.: -0.005 min  
 Response: 8227087  
 Conc: 357.81 ng/ml



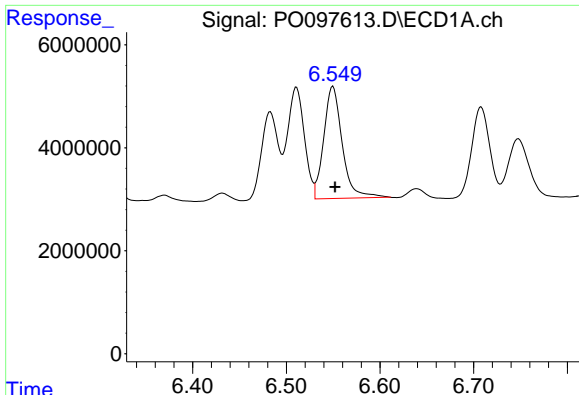
#24 AR-1248-4

R.T.: 6.511 min  
 Delta R.T.: -0.002 min  
 Response: 27323275  
 Conc: 298.68 ng/ml



#24 AR-1248-4

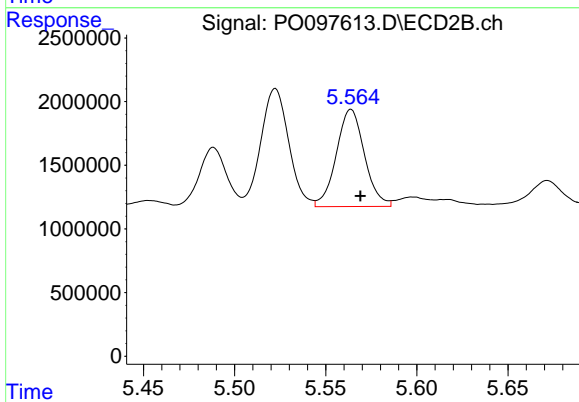
R.T.: 5.169 min  
 Delta R.T.: -0.005 min  
 Response: 8870591  
 Conc: 326.88 ng/ml



#25 AR-1248-5

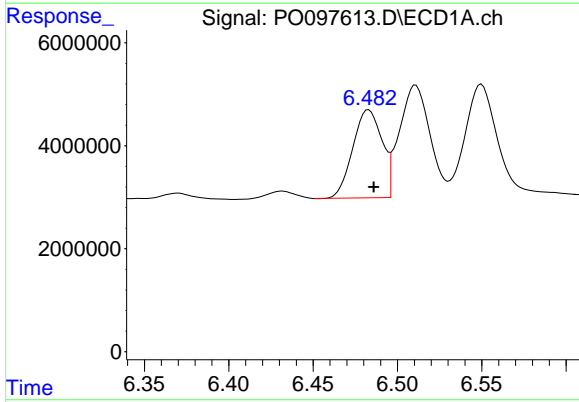
R.T.: 6.550 min  
 Delta R.T.: -0.002 min  
 Response: 29844387  
 Conc: 293.98 ng/ml

Instrument :  
 ECD\_O  
 ClientSampleId :



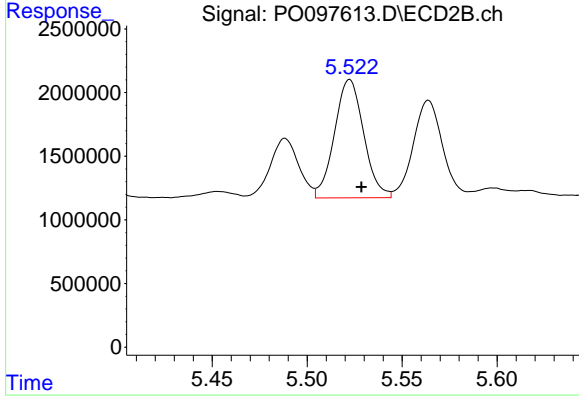
#25 AR-1248-5

R.T.: 5.564 min  
 Delta R.T.: -0.005 min  
 Response: 8237293  
 Conc: 364.36 ng/ml



#26 AR-1254-1

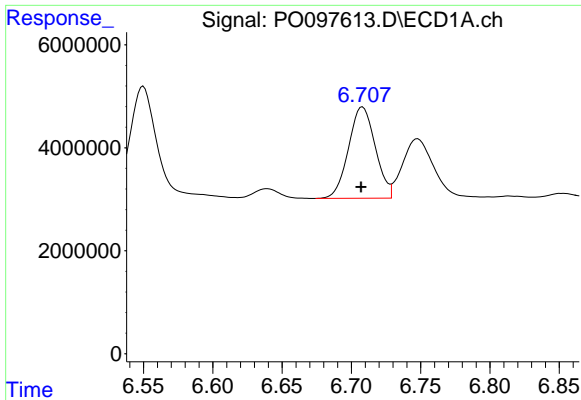
R.T.: 6.483 min  
 Delta R.T.: -0.003 min  
 Response: 20636907  
 Conc: 187.71 ng/ml



#26 AR-1254-1

R.T.: 5.522 min  
 Delta R.T.: -0.006 min  
 Response: 9978810  
 Conc: 258.55 ng/ml

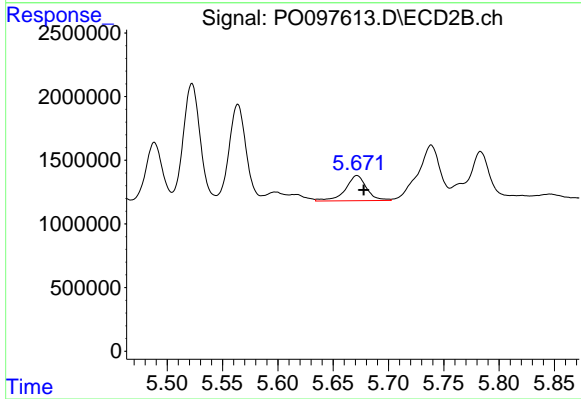




#27 AR-1254-2

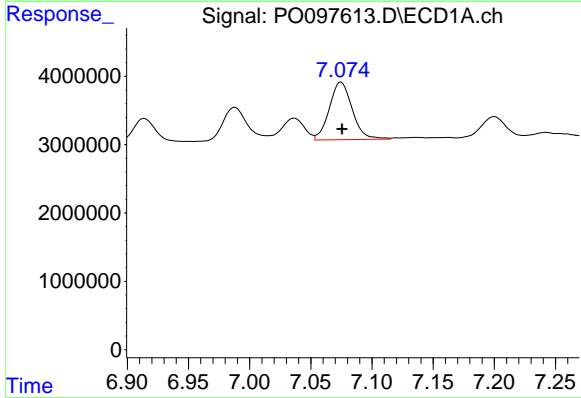
R.T.: 6.708 min  
 Delta R.T.: 0.001 min  
 Response: 23842969  
 Conc: 146.31 ng/ml

Instrument :  
 ECD\_O  
 ClientSampleId :



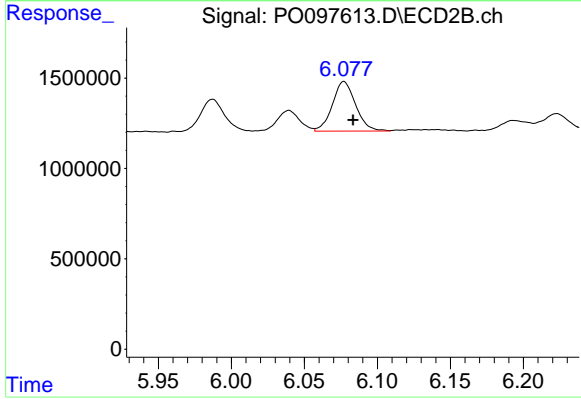
#27 AR-1254-2

R.T.: 5.672 min  
 Delta R.T.: -0.006 min  
 Response: 2645895  
 Conc: 77.68 ng/ml



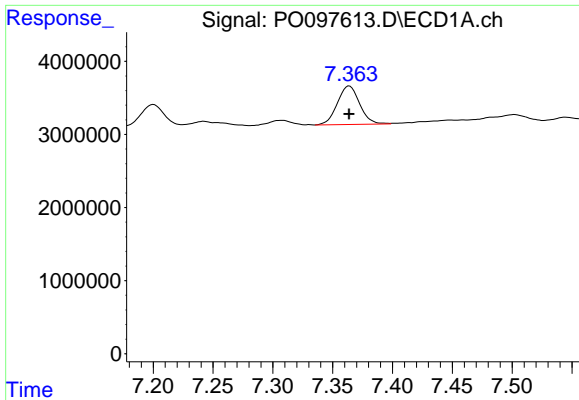
#28 AR-1254-3

R.T.: 7.075 min  
 Delta R.T.: 0.000 min  
 Response: 10983160  
 Conc: 67.44 ng/ml



#28 AR-1254-3

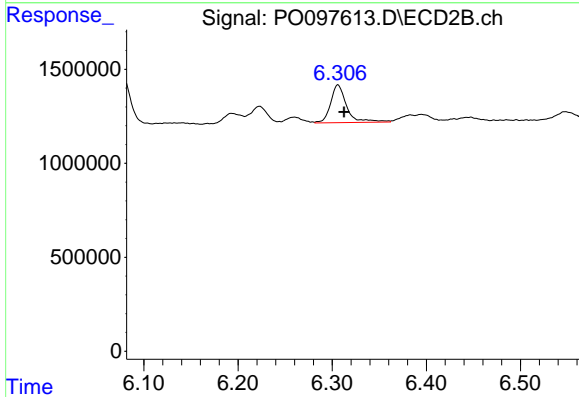
R.T.: 6.077 min  
 Delta R.T.: -0.006 min  
 Response: 3035442  
 Conc: 57.21 ng/ml



#29 AR-1254-4

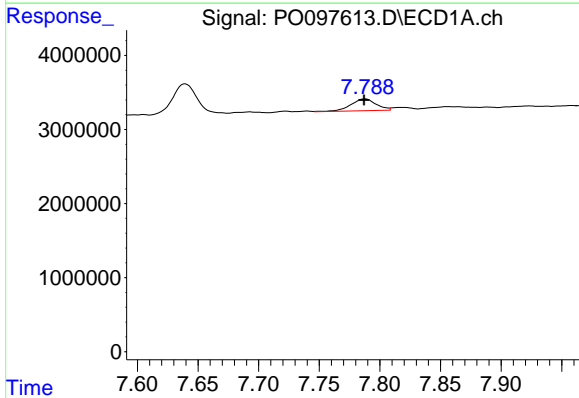
R.T.: 7.364 min  
 Delta R.T.: 0.000 min  
 Response: 6818044  
 Conc: 69.95 ng/ml

Instrument :  
 ECD\_O  
 ClientSampleId :



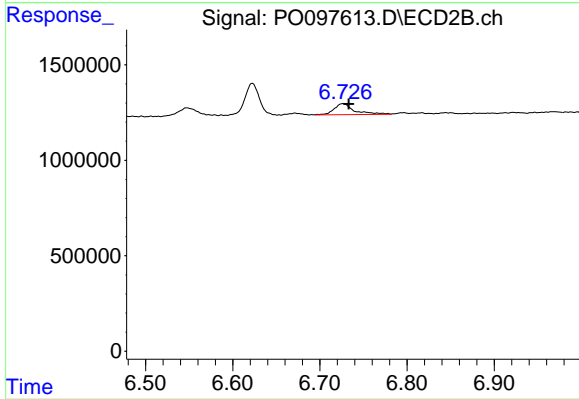
#29 AR-1254-4

R.T.: 6.306 min  
 Delta R.T.: -0.007 min  
 Response: 2387384  
 Conc: 87.55 ng/ml



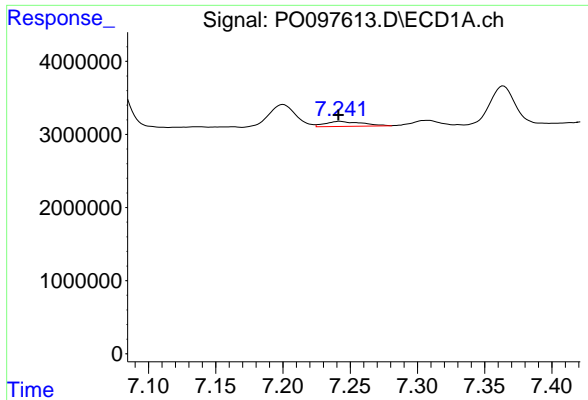
#30 AR-1254-5

R.T.: 7.788 min  
 Delta R.T.: 0.001 min  
 Response: 2293724  
 Conc: 20.31 ng/ml



#30 AR-1254-5

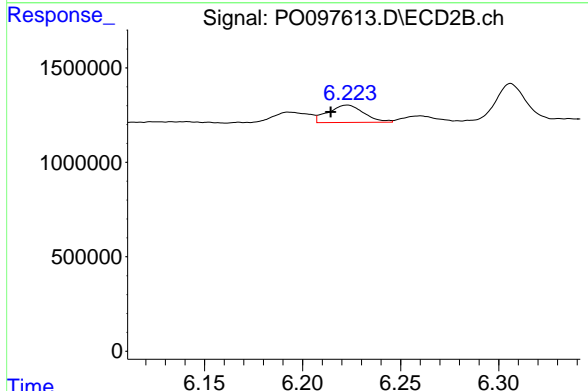
R.T.: 6.726 min  
 Delta R.T.: -0.007 min  
 Response: 949692  
 Conc: 21.54 ng/ml



#31 AR-1260-1

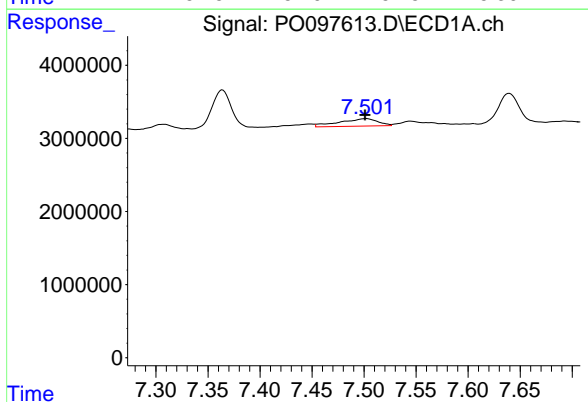
R.T.: 7.242 min  
 Delta R.T.: 0.001 min  
 Response: 1313688  
 Conc: 10.29 ng/ml

Instrument :  
 ECD\_O  
 ClientSampleId :



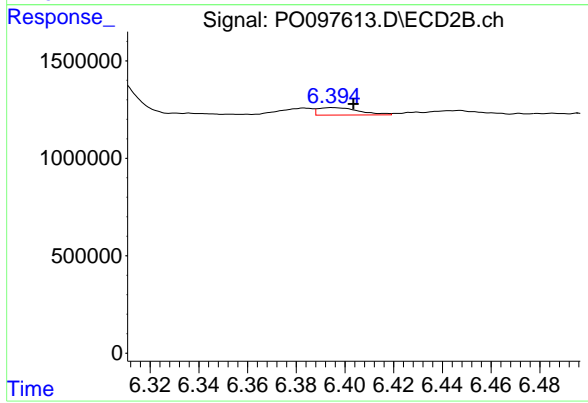
#31 AR-1260-1

R.T.: 6.223 min  
 Delta R.T.: 0.008 min  
 Response: 1166129  
 Conc: 31.22 ng/ml



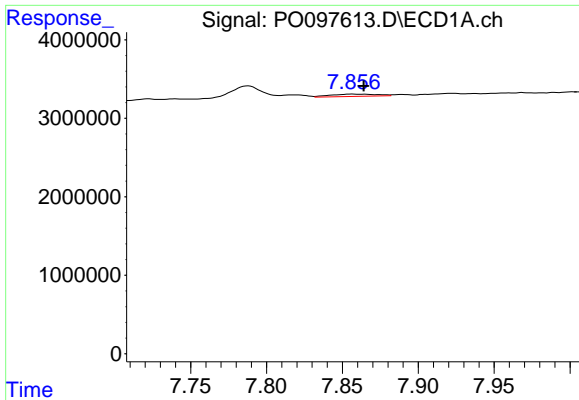
#32 AR-1260-2

R.T.: 7.502 min  
 Delta R.T.: 0.000 min  
 Response: 2633624  
 Conc: 19.33 ng/ml



#32 AR-1260-2

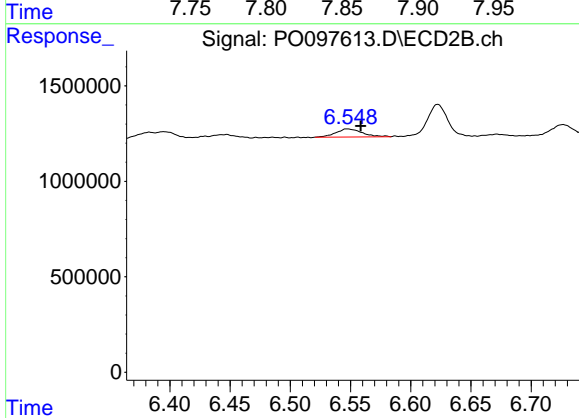
R.T.: 6.395 min  
 Delta R.T.: -0.009 min  
 Response: 446275  
 Conc: 10.55 ng/ml



#33 AR-1260-3

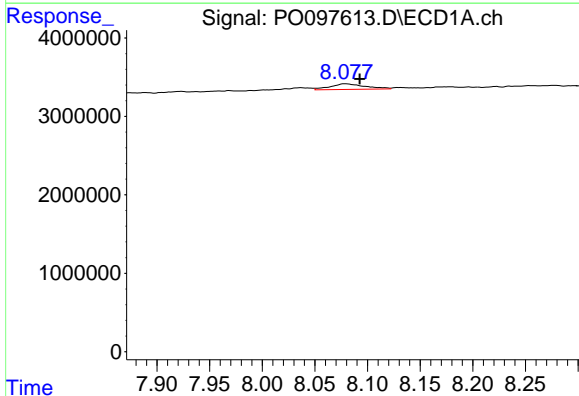
R.T.: 7.856 min  
 Delta R.T.: -0.008 min  
 Response: 607741  
 Conc: 5.75 ng/ml

Instrument :  
 ECD\_O  
 ClientSampleId :



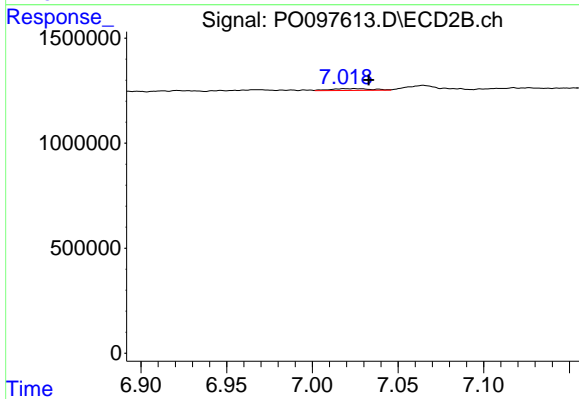
#33 AR-1260-3

R.T.: 6.547 min  
 Delta R.T.: -0.011 min  
 Response: 648271  
 Conc: 15.49 ng/ml



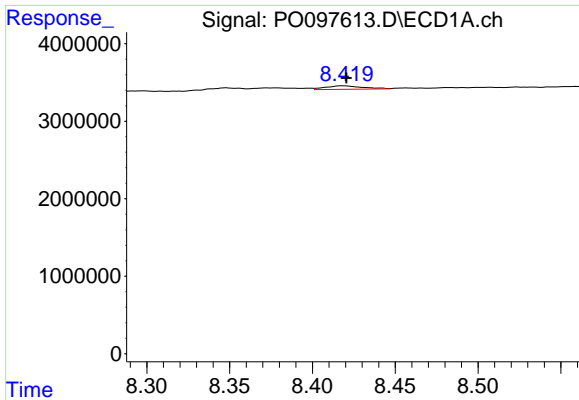
#34 AR-1260-4

R.T.: 8.078 min  
 Delta R.T.: -0.014 min  
 Response: 1668823  
 Conc: 14.75 ng/ml



#34 AR-1260-4

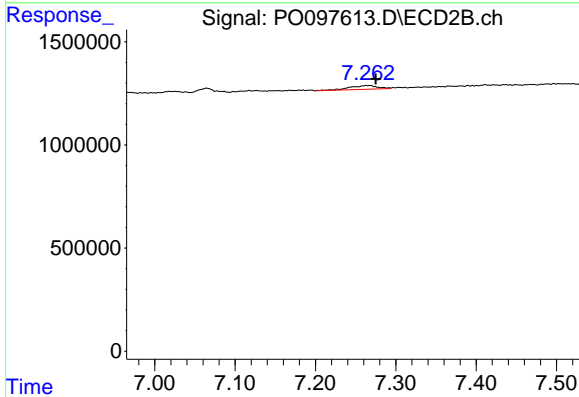
R.T.: 7.025 min  
 Delta R.T.: -0.008 min  
 Response: 150310  
 Conc: 4.65 ng/ml



#35 AR-1260-5

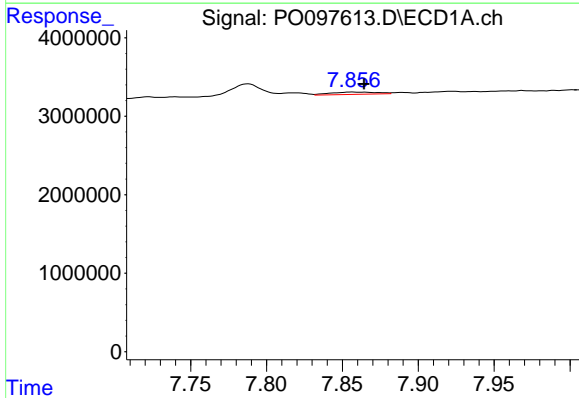
R.T.: 8.419 min  
 Delta R.T.: -0.002 min  
 Response: 718100  
 Conc: 3.82 ng/ml

Instrument :  
 ECD\_O  
 ClientSampleId :



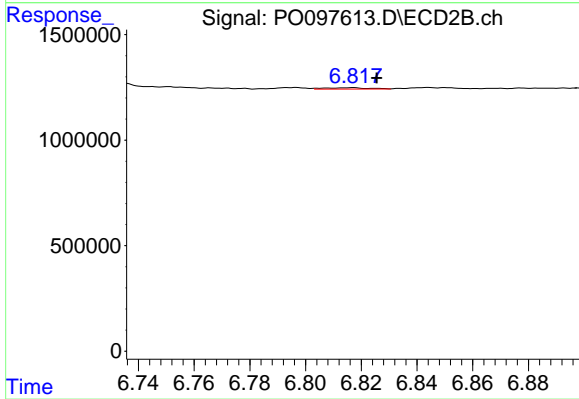
#35 AR-1260-5

R.T.: 7.263 min  
 Delta R.T.: -0.012 min  
 Response: 444313  
 Conc: 6.73 ng/ml



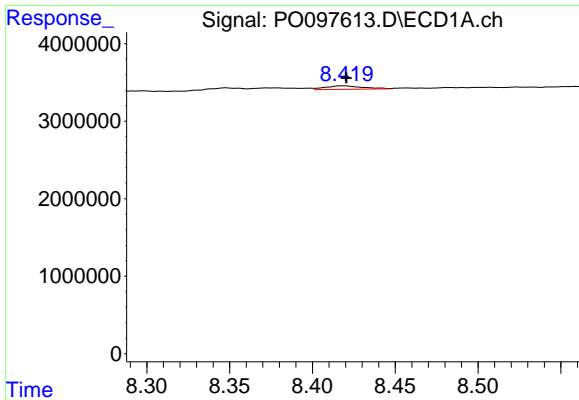
#36 AR-1262-1

R.T.: 7.856 min  
 Delta R.T.: -0.008 min  
 Response: 607741  
 Conc: 4.04 ng/ml



#36 AR-1262-1

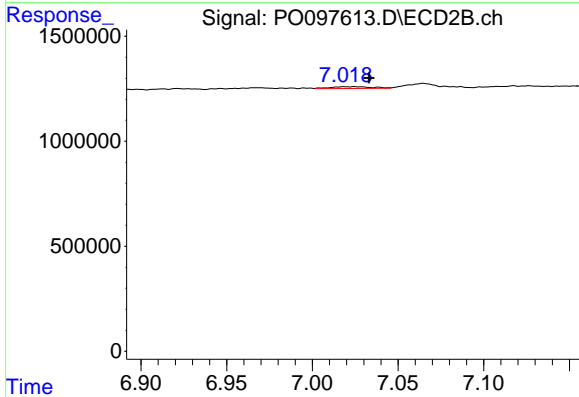
R.T.: 6.817 min  
 Delta R.T.: -0.009 min  
 Response: 67541  
 Conc: 3.37 ng/ml



#37 AR-1262-2

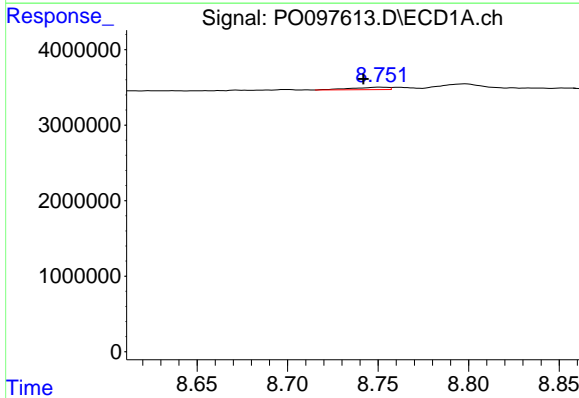
R.T.: 8.419 min  
 Delta R.T.: -0.002 min  
 Response: 718100  
 Conc: 3.28 ng/ml

Instrument :  
 ECD\_O  
 ClientSampleId :



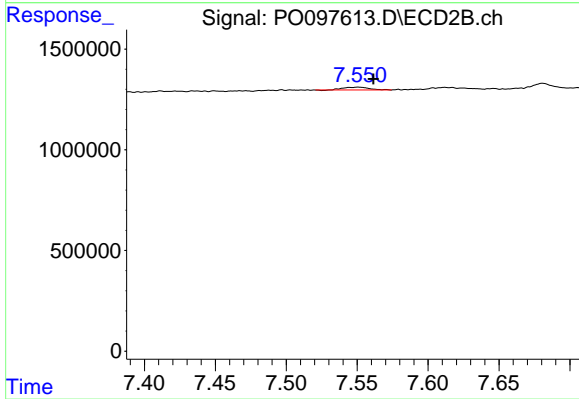
#37 AR-1262-2

R.T.: 7.025 min  
 Delta R.T.: -0.008 min  
 Response: 150310  
 Conc: 3.44 ng/ml



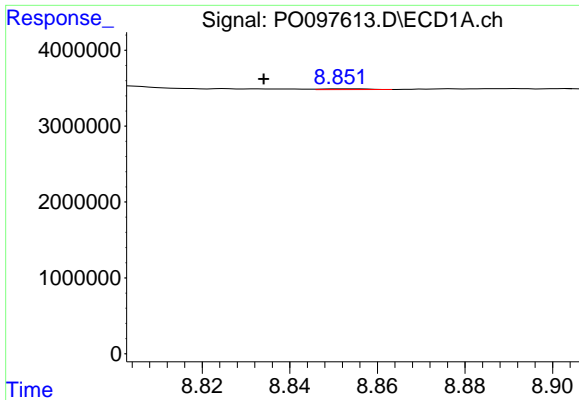
#38 AR-1262-3

R.T.: 8.752 min  
 Delta R.T.: 0.010 min  
 Response: 456038  
 Conc: 2.94 ng/ml



#38 AR-1262-3

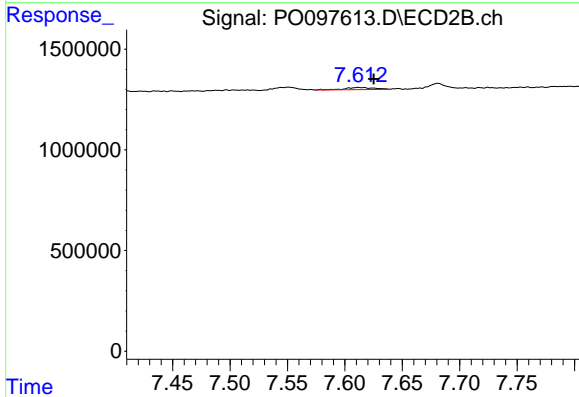
R.T.: 7.551 min  
 Delta R.T.: -0.011 min  
 Response: 179212  
 Conc: 5.75 ng/ml



#39 AR-1262-4

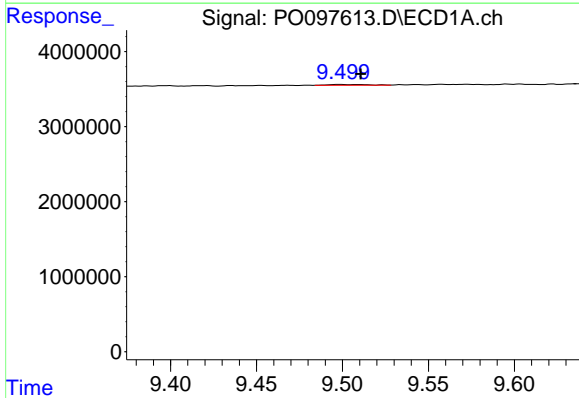
R.T.: 8.852 min  
 Delta R.T.: 0.018 min  
 Response: 63431  
 Conc: 0.51 ng/ml

Instrument :  
 ECD\_O  
 ClientSampleId :



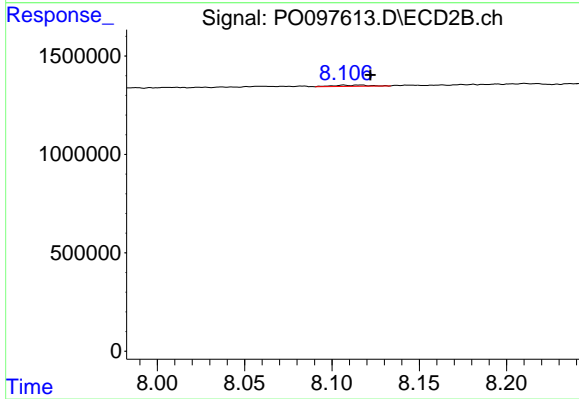
#39 AR-1262-4

R.T.: 7.612 min  
 Delta R.T.: -0.013 min  
 Response: 196237  
 Conc: 3.49 ng/ml



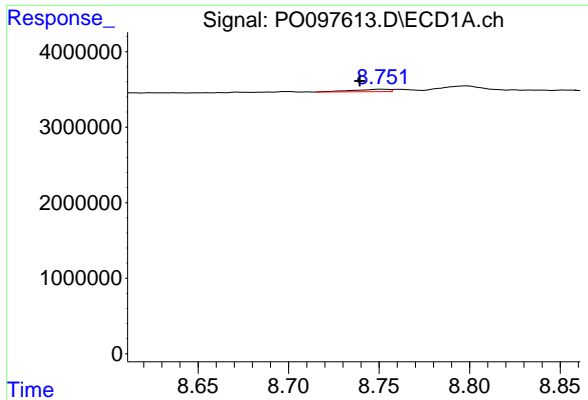
#40 AR-1262-5

R.T.: 9.499 min  
 Delta R.T.: -0.012 min  
 Response: 145440  
 Conc: 2.11 ng/ml



#40 AR-1262-5

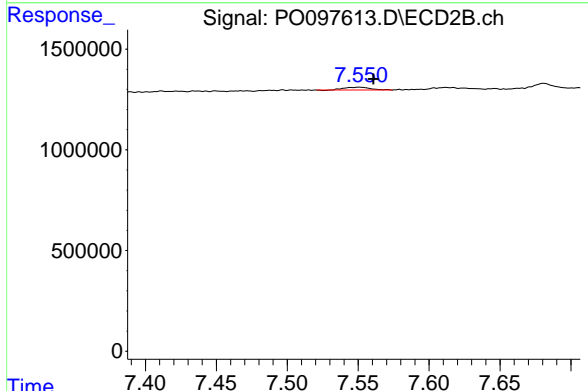
R.T.: 8.107 min  
 Delta R.T.: -0.015 min  
 Response: 86848  
 Conc: 3.69 ng/ml



#41 AR-1268-1

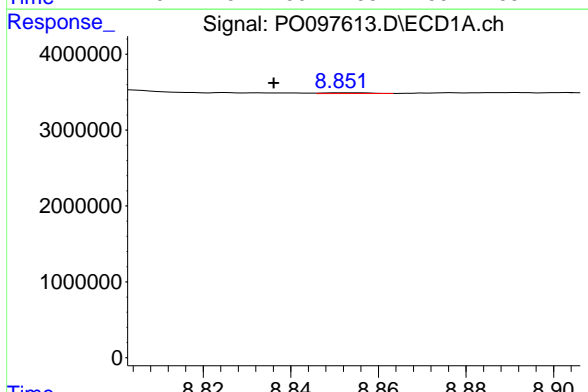
R.T.: 8.752 min  
 Delta R.T.: 0.012 min  
 Response: 456038  
 Conc: 1.61 ng/ml

Instrument :  
 ECD\_O  
 ClientSampleId :



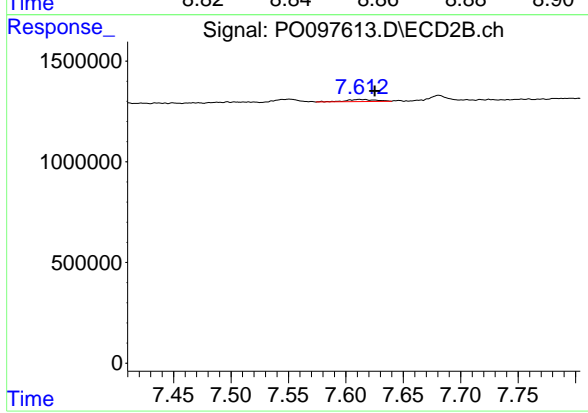
#41 AR-1268-1

R.T.: 7.551 min  
 Delta R.T.: -0.010 min  
 Response: 179212  
 Conc: 1.87 ng/ml



#42 AR-1268-2

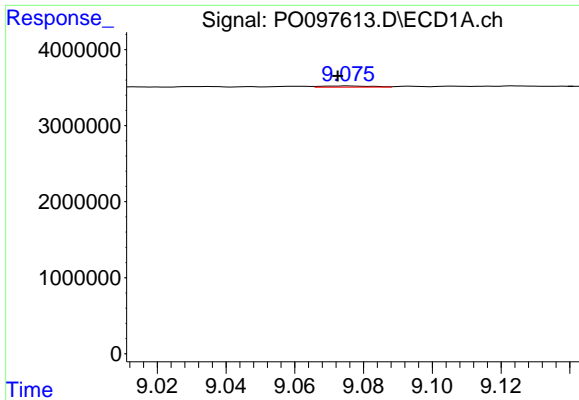
R.T.: 8.852 min  
 Delta R.T.: 0.016 min  
 Response: 63431  
 Conc: 0.25 ng/ml



#42 AR-1268-2

R.T.: 7.612 min  
 Delta R.T.: -0.013 min  
 Response: 196237  
 Conc: 2.37 ng/ml

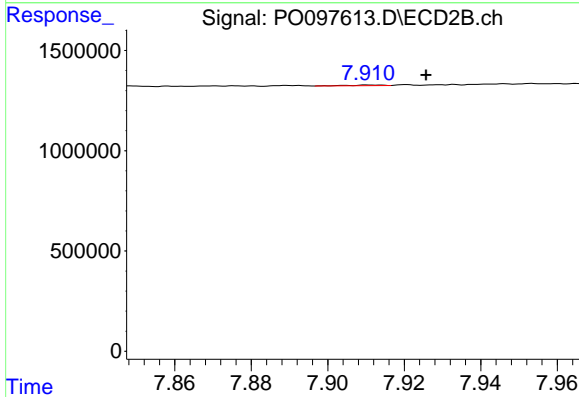




#43 AR-1268-3

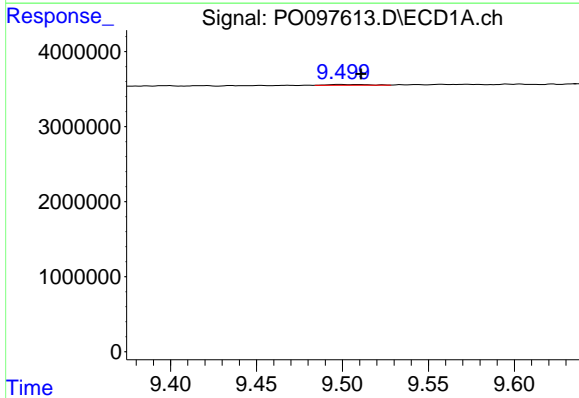
R.T.: 9.075 min  
 Delta R.T.: 0.003 min  
 Response: 163299  
 Conc: 0.72 ng/ml

Instrument :  
 ECD\_O  
 ClientSampleId :



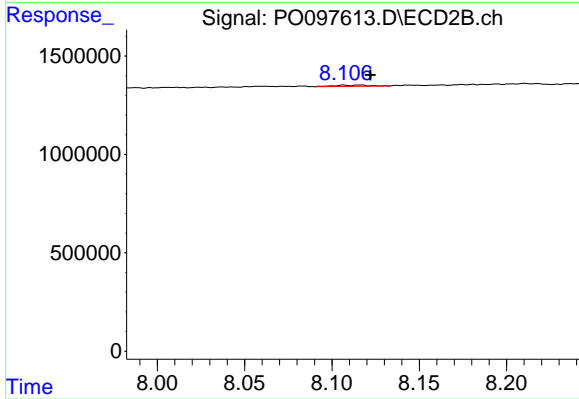
#43 AR-1268-3

R.T.: 7.911 min  
 Delta R.T.: -0.014 min  
 Response: 16968  
 Conc: 0.86 ng/ml



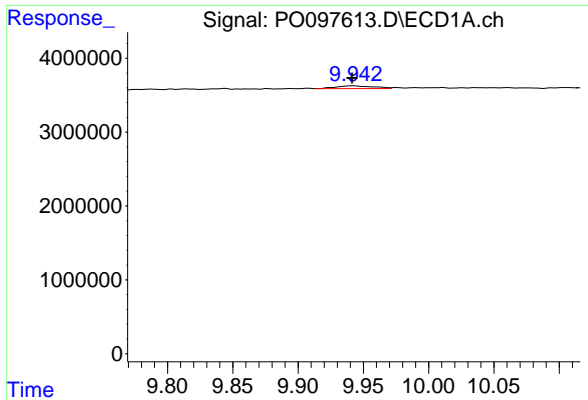
#44 AR-1268-4

R.T.: 9.499 min  
 Delta R.T.: -0.012 min  
 Response: 145440  
 Conc: 1.89 ng/ml



#44 AR-1268-4

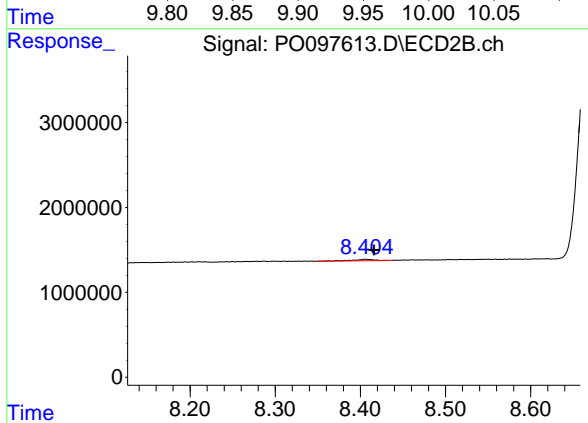
R.T.: 8.107 min  
 Delta R.T.: -0.015 min  
 Response: 86848  
 Conc: 3.36 ng/ml



#45 AR-1268-5

R.T.: 9.942 min  
 Delta R.T.: 0.000 min  
 Response: 761561  
 Conc: 1.10 ng/ml

Instrument :  
 ECD\_O  
 ClientSampleId :



#45 AR-1268-5

R.T.: 8.406 min  
 Delta R.T.: -0.011 min  
 Response: 325921  
 Conc: 1.43 ng/ml