

Data Path : Z:\pestpcbsrv\HPCHEM1\ECD\_0\Data\P0083123\  
 Data File : P0097615.D  
 Signal(s) : Signal #1: ECD1A.ch Signal #2: ECD2B.ch  
 Acq On : 01 Sep 2023 02:56  
 Operator : YP/AJ  
 Sample : AR1254CCC500  
 Misc :  
 ALS Vial : 6 Sample Multiplier: 1

Instrument :  
 ECD\_0  
 ClientSampleId :  
 AR1254CCC500

Integration File signal 1: autoint1.e  
 Integration File signal 2: autoint2.e  
 Quant Time: Sep 01 04:24:46 2023  
 Quant Method : Z:\pestpcbsrv\HPCHEM1\ECD\_0\methods\P0082823.M  
 Quant Title : GC EXTRACTABLES  
 QLast Update : Tue Aug 29 10:29:21 2023  
 Response via : Initial Calibration  
 Integrator: ChemStation

Volume Inj. : 2 µl  
 Signal #1 Phase : ZB-MR1 Signal #2 Phase: ZB-MR2  
 Signal #1 Info : 30Mx0.32mmx 0.50µ Signal #2 Info : 30M x 0.32mm x 0.25µm

Compound	RT#1	RT#2	Resp#1	Resp#2	ng/ml	ng/ml
-----						
System Monitoring Compounds						
1) SA Tetrachlo...	4.445	3.625	161.0E6	35254773	48.246	52.258
2) SA Decachlor...	10.299	8.666	92640791	31902650	50.475	55.576
Target Compounds						
26) L6 AR-1254-1	6.485	5.523	50675371	20396635	460.930	528.473
27) L6 AR-1254-2	6.706	5.672	74818737	17796185	459.123	522.482
28) L6 AR-1254-3	7.076	6.078	75159048	27746819	461.508	522.939
29) L6 AR-1254-4	7.364	6.307	50453148	16180438	517.630	593.376
30) L6 AR-1254-5	7.788	6.727	54106359	23749791	479.144	538.678
-----						

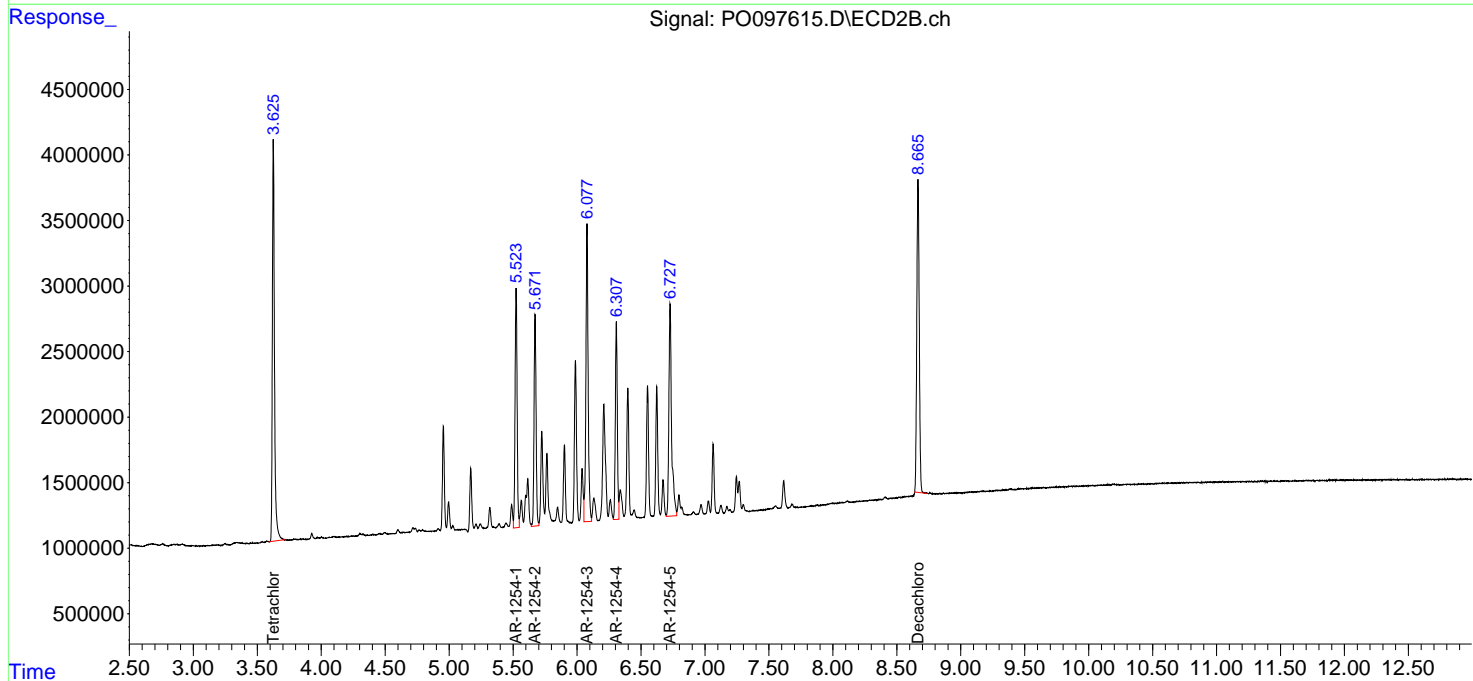
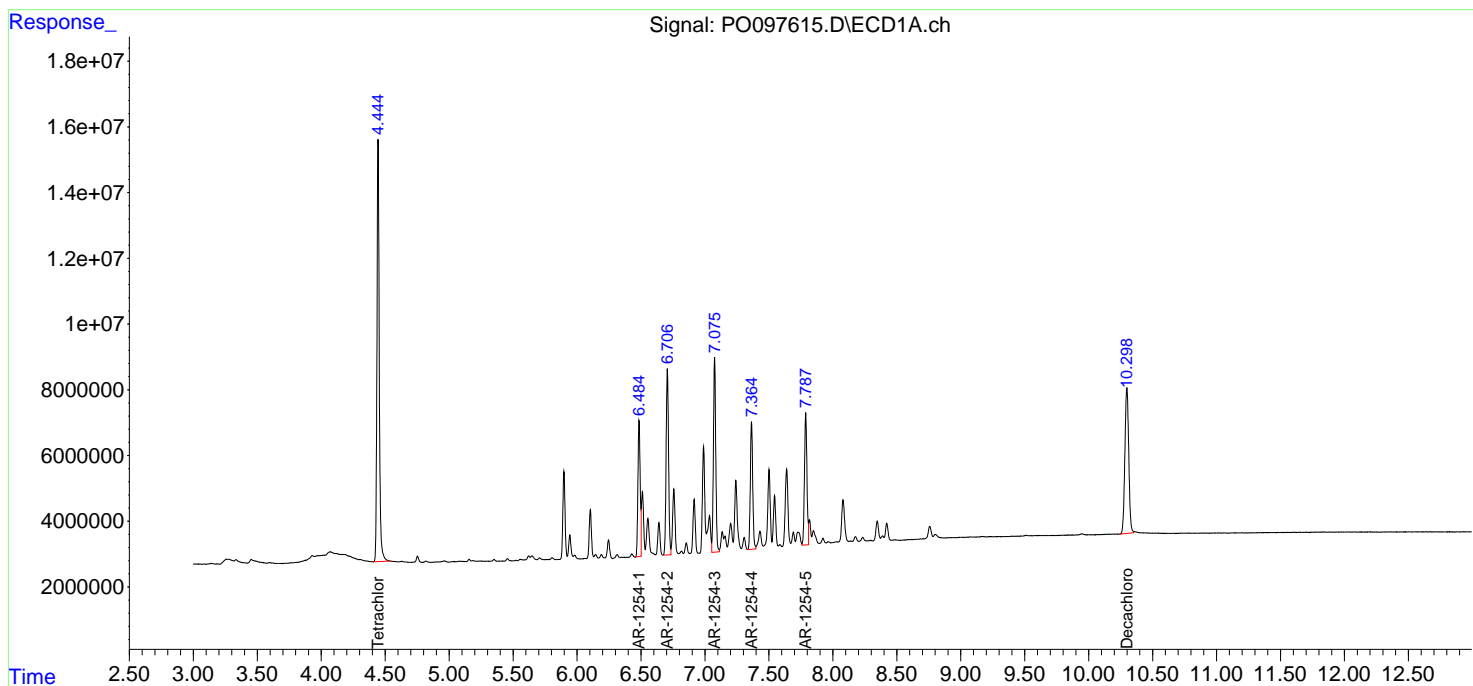
(f)=RT Delta > 1/2 Window (#)=Amounts differ by > 25% (m)=manual int.

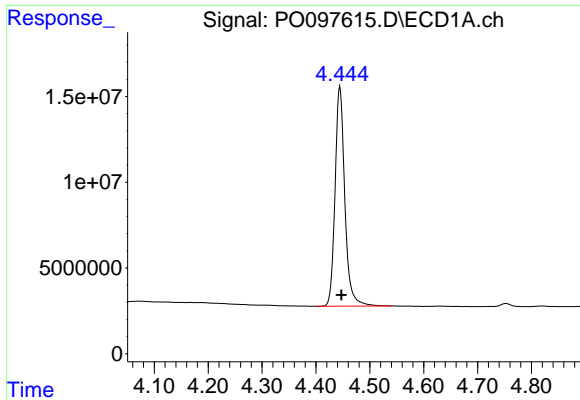
Data Path : Z:\pestpcbsrv\HPCHEM1\ECD\_0\Data\P0083123\  
 Data File : P0097615.D  
 Signal(s) : Signal #1: ECD1A.ch Signal #2: ECD2B.ch  
 Acq On : 01 Sep 2023 02:56  
 Operator : YP/AJ  
 Sample : AR1254CCC500  
 Misc :  
 ALS Vial : 6 Sample Multiplier: 1

Instrument :  
 ECD\_0  
 ClientSampleId :  
 AR1254CCC500

Integration File signal 1: autoint1.e  
 Integration File signal 2: autoint2.e  
 Quant Time: Sep 01 04:24:46 2023  
 Quant Method : Z:\pestpcbsrv\HPCHEM1\ECD\_0\methods\P0082823.M  
 Quant Title : GC EXTRACTABLES  
 QLast Update : Tue Aug 29 10:29:21 2023  
 Response via : Initial Calibration  
 Integrator: ChemStation

Volume Inj. : 2 µl  
 Signal #1 Phase : ZB-MR1 Signal #2 Phase: ZB-MR2  
 Signal #1 Info : 30Mx0.32mmx 0.50µm Signal #2 Info : 30M x 0.32mm x 0.25µm

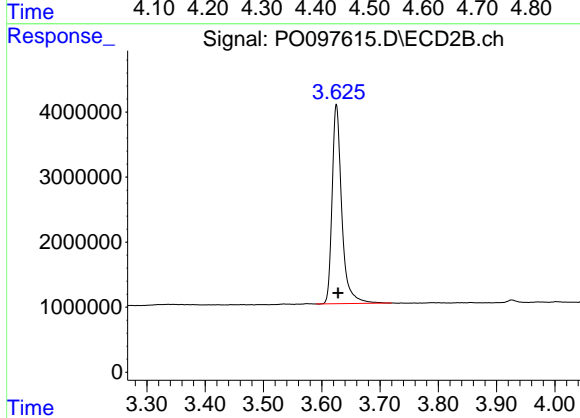




#1 Tetrachloro-m-xylene

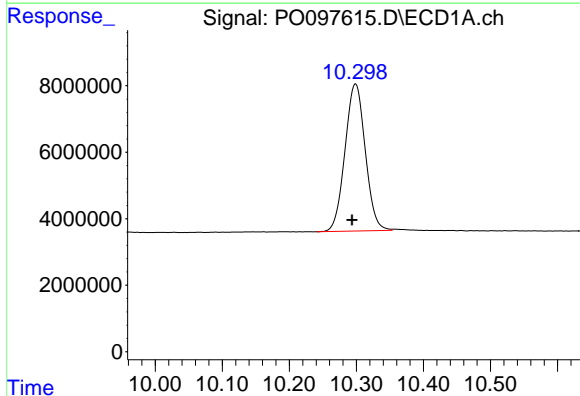
R.T.: 4.445 min  
 Delta R.T.: -0.002 min  
 Response: 161024714  
 Conc: 48.25 ng/ml

Instrument :  
 ECD\_O  
 ClientSampleId :  
 AR1254CCC500



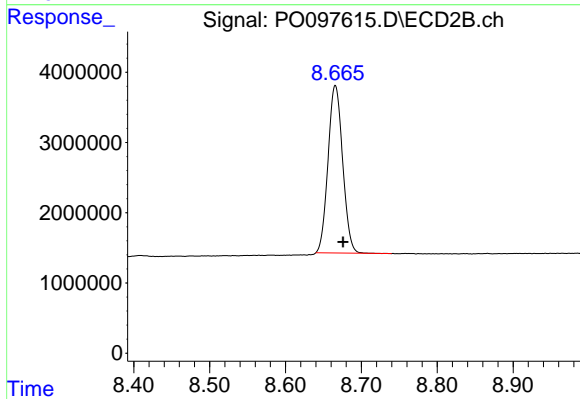
#1 Tetrachloro-m-xylene

R.T.: 3.625 min  
 Delta R.T.: -0.003 min  
 Response: 35254773  
 Conc: 52.26 ng/ml



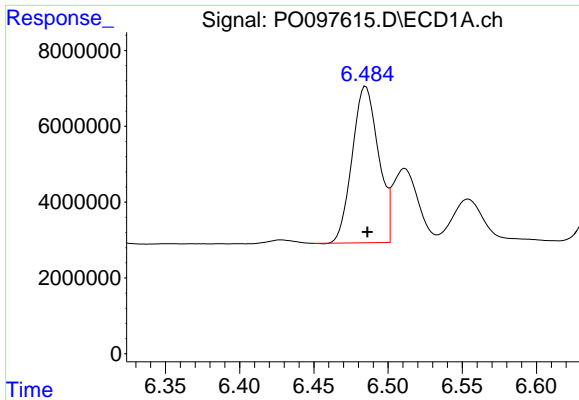
#2 Decachlorobiphenyl

R.T.: 10.299 min  
 Delta R.T.: 0.005 min  
 Response: 92640791  
 Conc: 50.48 ng/ml



#2 Decachlorobiphenyl

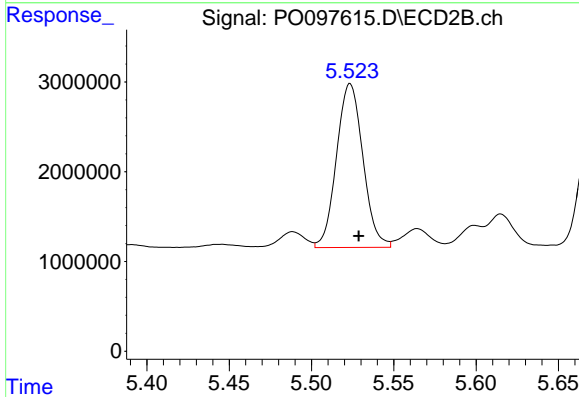
R.T.: 8.666 min  
 Delta R.T.: -0.010 min  
 Response: 31902650  
 Conc: 55.58 ng/ml



#26 AR-1254-1

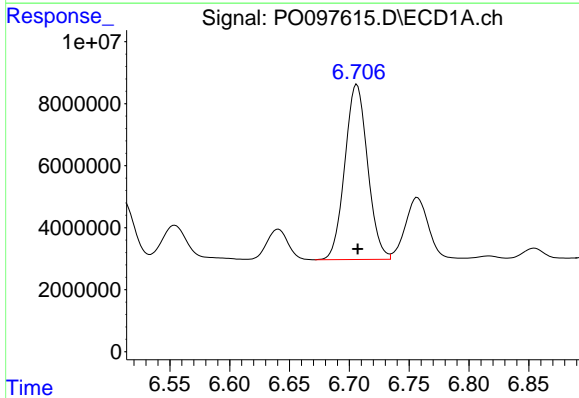
R.T.: 6.485 min  
 Delta R.T.: 0.000 min  
 Response: 50675371  
 Conc: 460.93 ng/ml

Instrument :  
 ECD\_O  
 ClientSampleId :  
 AR1254CCC500



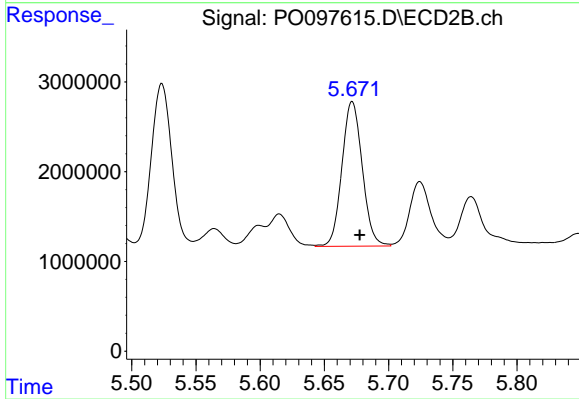
#26 AR-1254-1

R.T.: 5.523 min  
 Delta R.T.: -0.005 min  
 Response: 20396635  
 Conc: 528.47 ng/ml



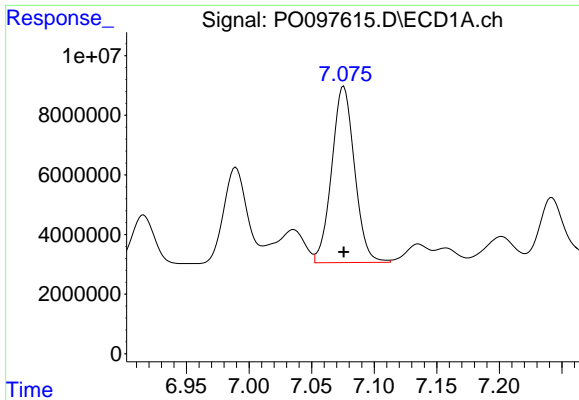
#27 AR-1254-2

R.T.: 6.706 min  
 Delta R.T.: 0.000 min  
 Response: 74818737  
 Conc: 459.12 ng/ml



#27 AR-1254-2

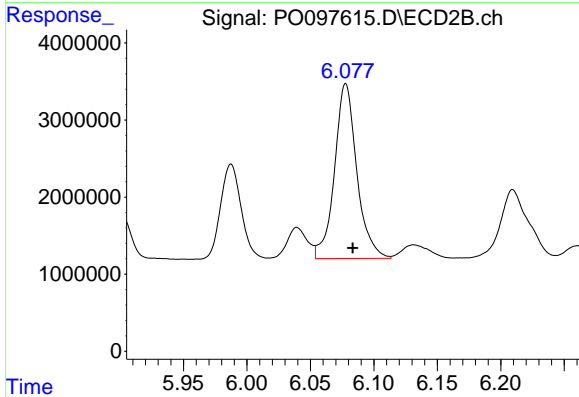
R.T.: 5.672 min  
 Delta R.T.: -0.006 min  
 Response: 17796185  
 Conc: 522.48 ng/ml



#28 AR-1254-3

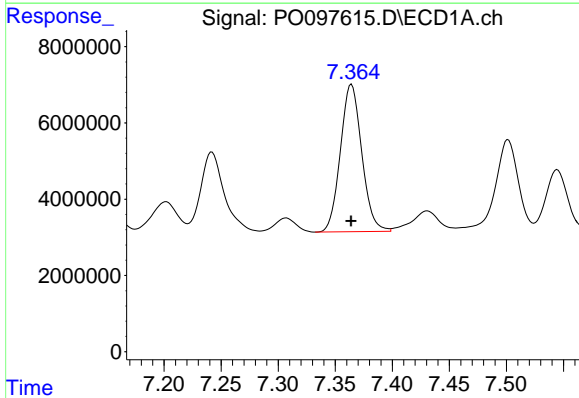
R.T.: 7.076 min  
 Delta R.T.: 0.000 min  
 Response: 75159048  
 Conc: 461.51 ng/ml

Instrument :  
 ECD\_O  
 ClientSampleId :  
 AR1254CCC500



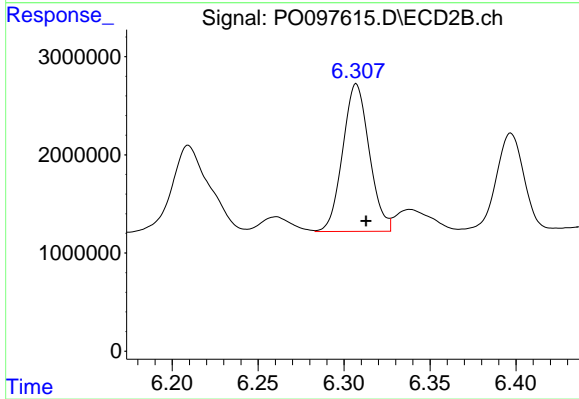
#28 AR-1254-3

R.T.: 6.078 min  
 Delta R.T.: -0.006 min  
 Response: 27746819  
 Conc: 522.94 ng/ml



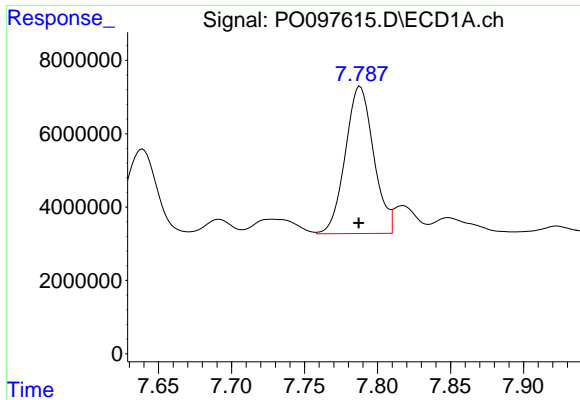
#29 AR-1254-4

R.T.: 7.364 min  
 Delta R.T.: 0.000 min  
 Response: 50453148  
 Conc: 517.63 ng/ml



#29 AR-1254-4

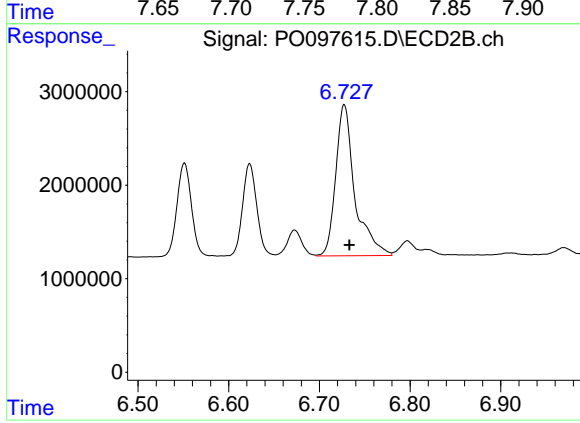
R.T.: 6.307 min  
 Delta R.T.: -0.006 min  
 Response: 16180438  
 Conc: 593.38 ng/ml



#30 AR-1254-5

R.T.: 7.788 min  
Delta R.T.: 0.001 min  
Response: 54106359  
Conc: 479.14 ng/ml

Instrument :  
ECD\_O  
ClientSampleId :  
AR1254CCC500



#30 AR-1254-5

R.T.: 6.727 min  
Delta R.T.: -0.006 min  
Response: 23749791  
Conc: 538.68 ng/ml