

Data Path : Z:\pestpcbsrv\HPCHEM1\ECD_0\Data\P0090123\
 Data File : P0097638.D
 Signal(s) : Signal #1: ECD1A.ch Signal #2: ECD2B.ch
 Acq On : 01 Sep 2023 16:26
 Operator : YP/AJ
 Sample : PB155250BS
 Misc :
 ALS Vial : 18 Sample Multiplier: 1

Instrument :
 ECD_0
 ClientSampleId :

Integration File signal 1: autoint1.e
 Integration File signal 2: autoint2.e
 Quant Time: Sep 02 00:00:34 2023
 Quant Method : Z:\pestpcbsrv\HPCHEM1\ECD_0\methods\P0082823.M
 Quant Title : GC EXTRACTABLES
 QLast Update : Tue Aug 29 10:29:21 2023
 Response via : Initial Calibration
 Integrator: ChemStation

Volume Inj. : 2 µl
 Signal #1 Phase : ZB-MR1 Signal #2 Phase: ZB-MR2
 Signal #1 Info : 30Mx0.32mmx 0.50µ Signal #2 Info : 30M x 0.32mm x 0.25µm

Compound	RT#1	RT#2	Resp#1	Resp#2	ng/ml	ng/ml
System Monitoring Compounds						
1) SA Tetrachlo...	4.446	3.627	66108704	12915256	19.807	19.144
2) SA Decachlor...	10.295	8.666	42657507	14310612	23.242	24.930
Target Compounds						
3) L1 AR-1016-1	5.623	4.717	44717226	11444848	496.812	525.748
4) L1 AR-1016-2	5.645	4.736	66314685	15896135	477.920	526.806
5) L1 AR-1016-3	5.708	4.913	41880261	8435550	461.908	522.216
6) L1 AR-1016-4	5.808	4.956	32098183	7179866	462.945	500.366
7) L1 AR-1016-5	6.104	5.170	32908965	9186612	463.316	502.324
8) L2 AR-1221-1	4.652	3.841	5157504	1051640	128.149	128.465
9) L2 AR-1221-2	4.743	3.929	6362637	1244993	211.669	214.812
10) L2 AR-1221-3	4.819	4.005	26025518	5614929	292.155	305.358
11) L3 AR-1232-1	4.819	4.005	26025518	5614929	352.863	372.685
12) L3 AR-1232-2	5.353	4.736	36910104	15896135	963.172	1138.673
13) L3 AR-1232-3	5.645	4.913	66314685	8435550	1025.334	1201.043
14) L3 AR-1232-4	5.808	4.997	32098183	8828786	1007.667	1248.667
15) L3 AR-1232-5	5.899	5.170	27690445	9186612	941.075	1167.124
16) L4 AR-1242-1	5.623	4.717	44717226	11444848	552.128	593.299
17) L4 AR-1242-2	5.645	4.736	66314685	15896135	530.997	583.995
18) L4 AR-1242-3	5.708	4.913	41880261	8435550	509.372	587.815
19) L4 AR-1242-4	5.808	4.997	32098183	8828786	511.324	557.428
20) L4 AR-1242-5	6.552	5.524	1155962	7276049	18.379	412.282 #
21) L5 AR-1248-1	5.623	4.717	44717226	11444848	758.198	832.853
22) L5 AR-1248-2	5.899	4.956	27690445	7179866	279.972	323.797
23) L5 AR-1248-3	6.104	4.997	32908965	8828786	317.634	383.984
24) L5 AR-1248-4	6.510	5.170	1228216	9186612	13.426	338.529 #
25) L5 AR-1248-5	6.552	5.564	1155962	1001334	11.387	44.292 #
26) L6 AR-1254-1	6.485	5.524	22025412	7276049	200.337	188.521
27) L6 AR-1254-2	6.705	5.672	25966647	7059071	159.343	207.249 #
28) L6 AR-1254-3	7.075	6.094	13472419	12336393	82.726	232.502 #
29) L6 AR-1254-4	7.364	6.308	7826099	1183577	80.293	43.405 #
30) L6 AR-1254-5	7.786	6.727	62481676	24128013	553.312	547.257
31) L7 AR-1260-1	7.241	6.209	56060596	18055308	439.189	483.417
32) L7 AR-1260-2	7.502	6.397	53673947	21389607	393.890	505.494 #
33) L7 AR-1260-3	7.865	6.552	31025419	19803121	293.529	473.102 #
34) L7 AR-1260-4	8.056f	7.027	1636372	14603435	14.465	451.517 #
35) L7 AR-1260-5	8.420	7.269	80274337	33349573	427.039	505.083
36) L8 AR-1262-1	7.865	6.820	31025419	7964125	206.174	396.840 #
37) L8 AR-1262-2	8.420	7.027	80274337	14603435	366.571	334.242
38) L8 AR-1262-3	8.754	7.555	4182220	6348340	26.976	203.699 #
39) L8 AR-1262-4	8.832	7.617	3243241	23990002	26.017	426.496 #
40) L8 AR-1262-5	9.512	8.115	20902095	7371280	303.944	313.333
41) L9 AR-1268-1	8.754	7.555	4182220	6348340	14.725	66.321 #

Data Path : Z:\pestpcbsrv\HPCHEM1\ECD_0\Data\P0090123\
 Data File : P0097638.D
 Signal(s) : Signal #1: ECD1A.ch Signal #2: ECD2B.ch
 Acq On : 01 Sep 2023 16:26
 Operator : YP/AJ
 Sample : PB155250BS
 Misc :
 ALS Vial : 18 Sample Multiplier: 1

Instrument :
 ECD_0
 ClientSampleId :

Integration File signal 1: autoint1.e
 Integration File signal 2: autoint2.e
 Quant Time: Sep 02 00:00:34 2023
 Quant Method : Z:\pestpcbsrv\HPCHEM1\ECD_0\methods\P0082823.M
 Quant Title : GC EXTRACTABLES
 QLast Update : Tue Aug 29 10:29:21 2023
 Response via : Initial Calibration
 Integrator: ChemStation

Volume Inj. : 2 µl
 Signal #1 Phase : ZB-MR1 Signal #2 Phase: ZB-MR2
 Signal #1 Info : 30Mx0.32mmx 0.50µ Signal #2 Info : 30M x 0.32mm x 0.25µm

	Compound	RT#1	RT#2	Resp#1	Resp#2	ng/ml	ng/ml
42)	L9 AR-1268-2	8.832	7.617	3243241	23990002	12.765	289.403 #
43)	L9 AR-1268-3	9.073	7.918	1636143	297223	7.254	15.001 #
44)	L9 AR-1268-4	9.512	8.115	20902095	7371280	271.565	285.240
45)	L9 AR-1268-5	9.942	8.409	8499703	2688642	12.309	11.794

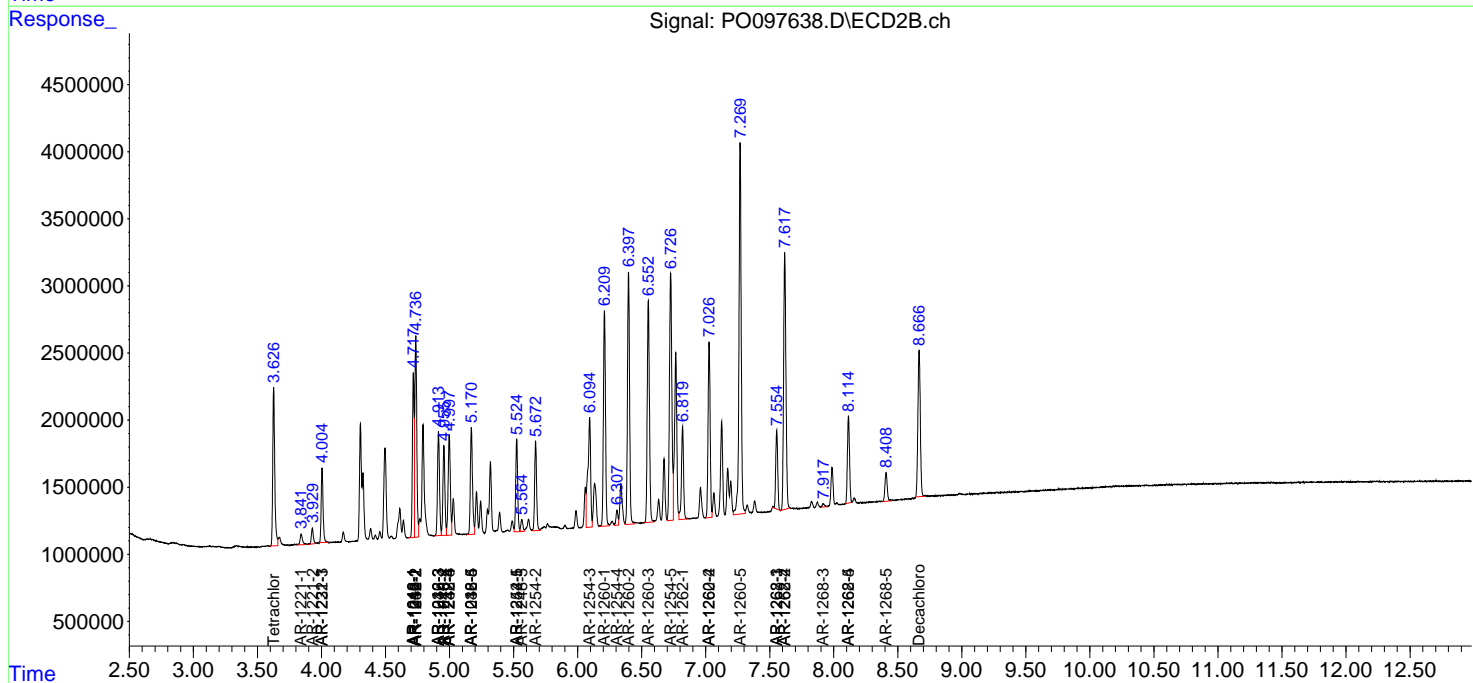
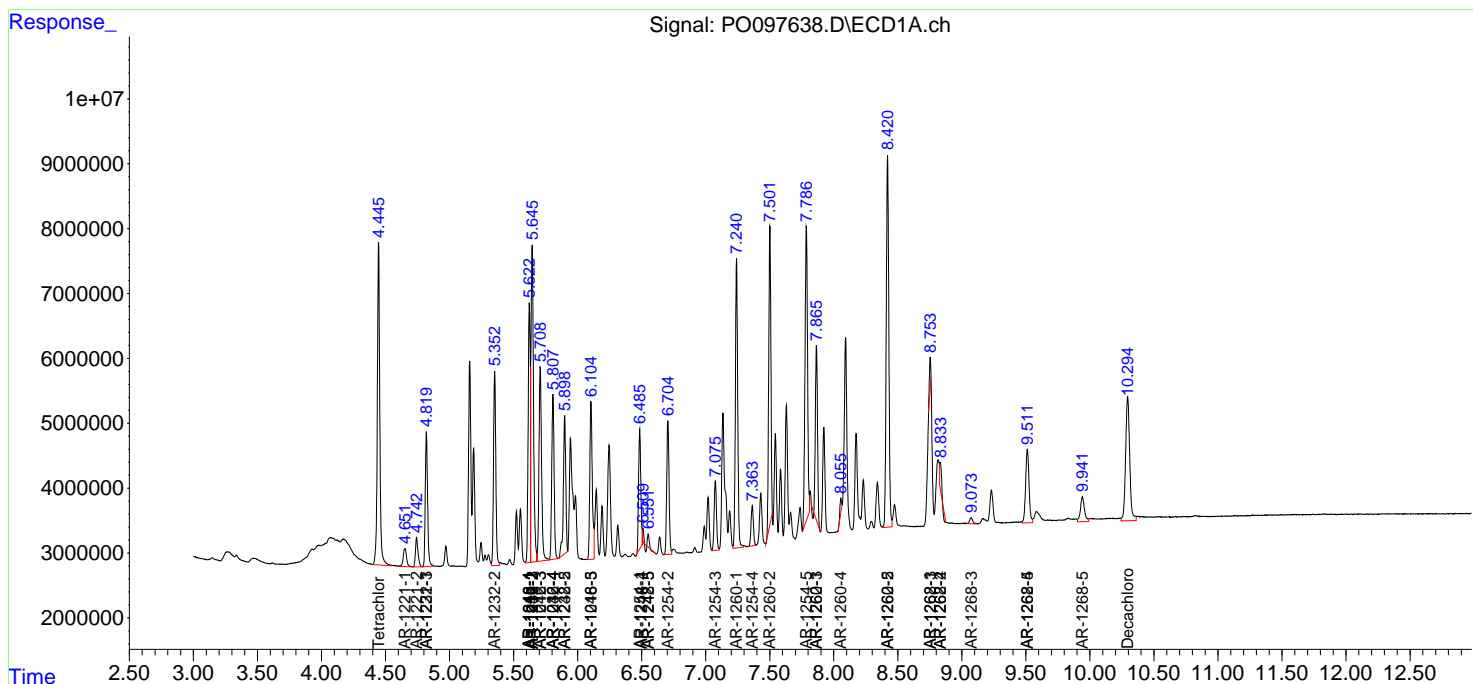
(f)=RT Delta > 1/2 Window (#)=Amounts differ by > 25% (m)=manual int.

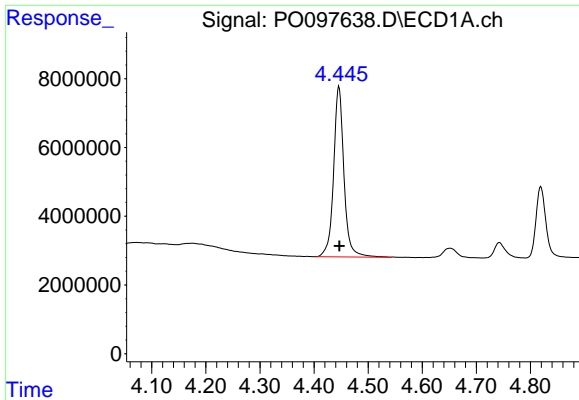
Data Path : Z:\pestpcbsrv\HPCHEM1\ECD_O\Data\PO090123\
 Data File : PO097638.D
 Signal(s) : Signal #1: ECD1A.ch Signal #2: ECD2B.ch
 Acq On : 01 Sep 2023 16:26
 Operator : YP/AJ
 Sample : PB155250BS
 Misc :
 ALS Vial : 18 Sample Multiplier: 1

Instrument :
 ECD_O
 ClientSampleId :

Integration File signal 1: autoint1.e
 Integration File signal 2: autoint2.e
 Quant Time: Sep 02 00:00:34 2023
 Quant Method : Z:\pestpcbsrv\HPCHEM1\ECD_O\methods\PO082823.M
 Quant Title : GC EXTRACTABLES
 QLast Update : Tue Aug 29 10:29:21 2023
 Response via : Initial Calibration
 Integrator: ChemStation

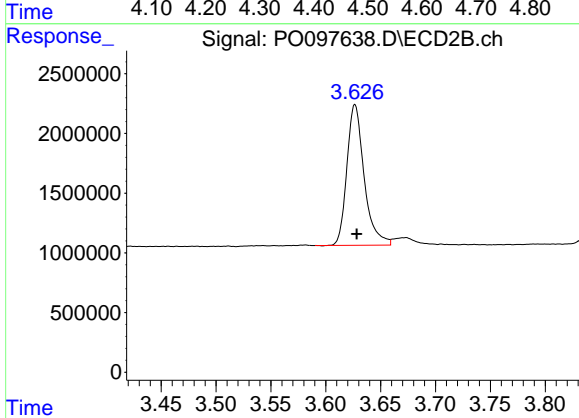
Volume Inj. : 2 µl
 Signal #1 Phase : ZB-MR1 Signal #2 Phase: ZB-MR2
 Signal #1 Info : 30Mx0.32mmx 0.50µ Signal #2 Info : 30M x 0.32mm x 0.25µm



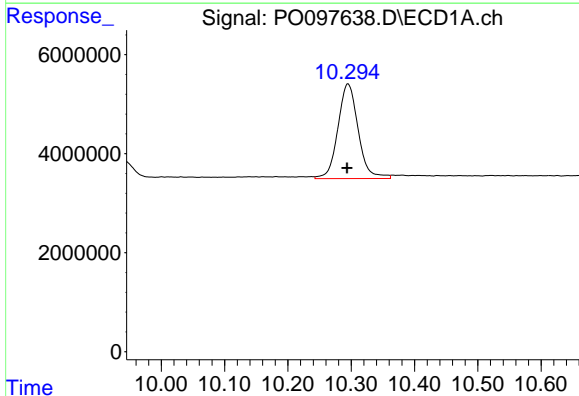


#1 Tetrachloro-m-xylene
 R.T.: 4.446 min
 Delta R.T.: 0.000 min
 Response: 66108704
 Conc: 19.81 ng/ml

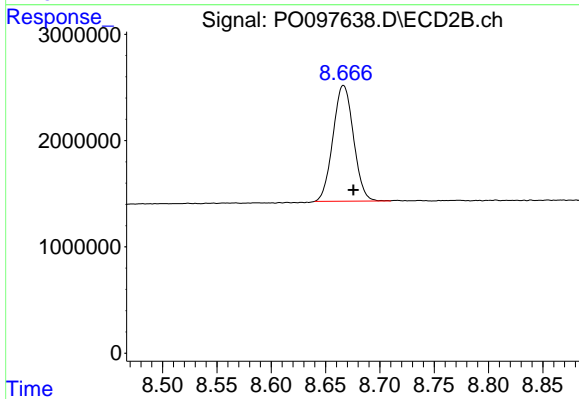
Instrument :
 ECD_O
 ClientSampleId :



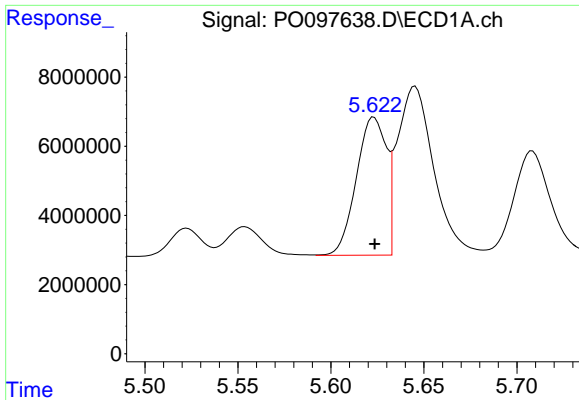
#1 Tetrachloro-m-xylene
 R.T.: 3.627 min
 Delta R.T.: -0.002 min
 Response: 12915256
 Conc: 19.14 ng/ml



#2 Decachlorobiphenyl
 R.T.: 10.295 min
 Delta R.T.: 0.001 min
 Response: 42657507
 Conc: 23.24 ng/ml



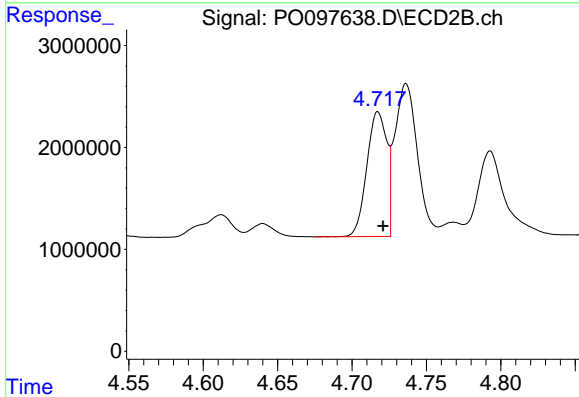
#2 Decachlorobiphenyl
 R.T.: 8.666 min
 Delta R.T.: -0.009 min
 Response: 14310612
 Conc: 24.93 ng/ml



#3 AR-1016-1

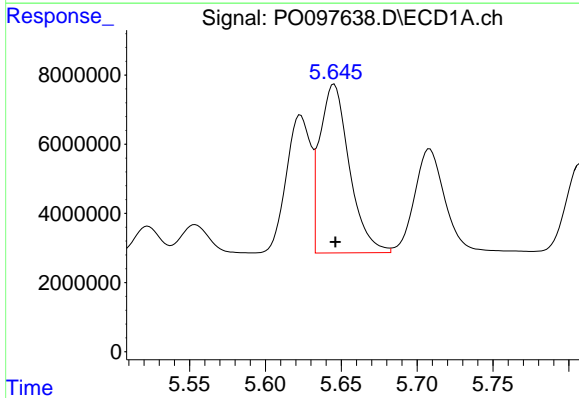
R.T.: 5.623 min
 Delta R.T.: 0.000 min
 Response: 44717226
 Conc: 496.81 ng/ml

Instrument :
 ECD_O
 ClientSampleId :



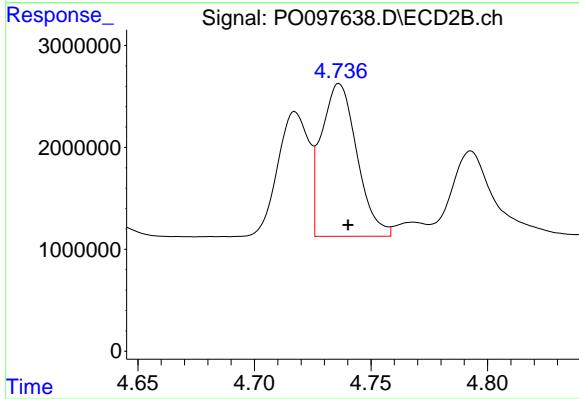
#3 AR-1016-1

R.T.: 4.717 min
 Delta R.T.: -0.003 min
 Response: 11444848
 Conc: 525.75 ng/ml



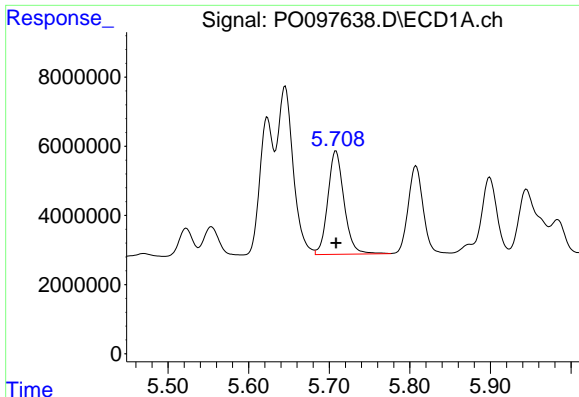
#4 AR-1016-2

R.T.: 5.645 min
 Delta R.T.: 0.000 min
 Response: 66314685
 Conc: 477.92 ng/ml



#4 AR-1016-2

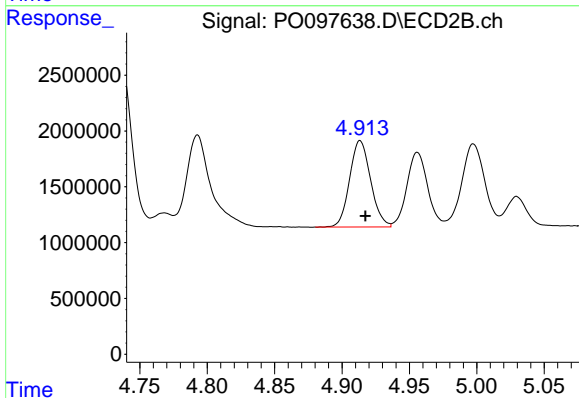
R.T.: 4.736 min
 Delta R.T.: -0.004 min
 Response: 15896135
 Conc: 526.81 ng/ml



#5 AR-1016-3

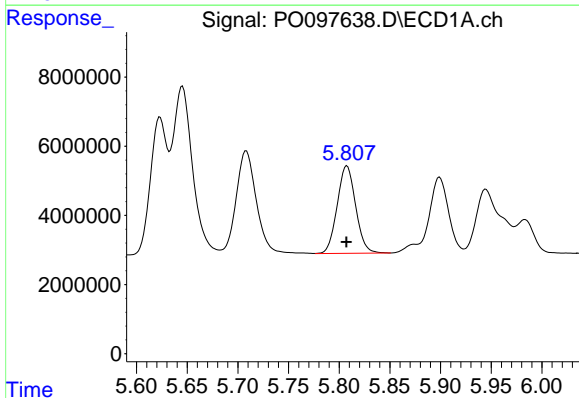
R.T.: 5.708 min
 Delta R.T.: 0.000 min
 Response: 41880261
 Conc: 461.91 ng/ml

Instrument :
 ECD_O
 ClientSampleId :



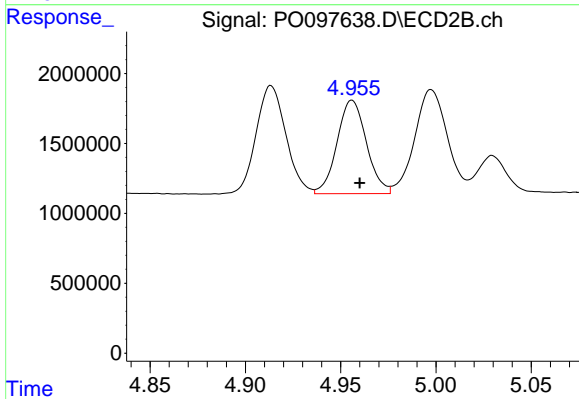
#5 AR-1016-3

R.T.: 4.913 min
 Delta R.T.: -0.004 min
 Response: 8435550
 Conc: 522.22 ng/ml



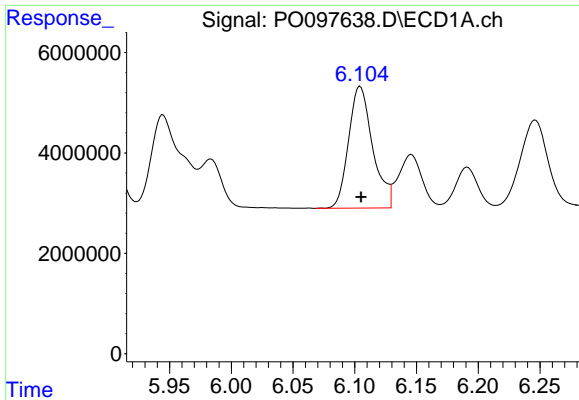
#6 AR-1016-4

R.T.: 5.808 min
 Delta R.T.: 0.000 min
 Response: 32098183
 Conc: 462.95 ng/ml



#6 AR-1016-4

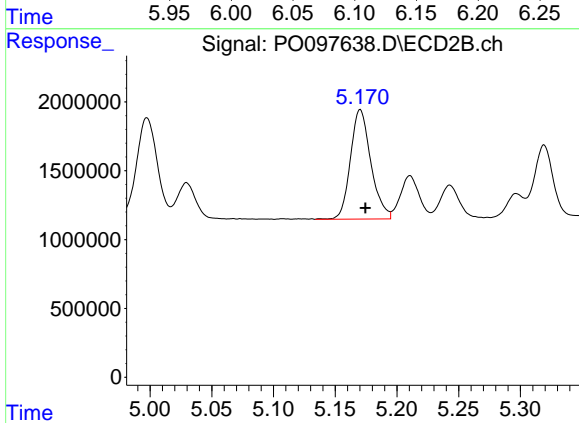
R.T.: 4.956 min
 Delta R.T.: -0.004 min
 Response: 7179866
 Conc: 500.37 ng/ml



#7 AR-1016-5

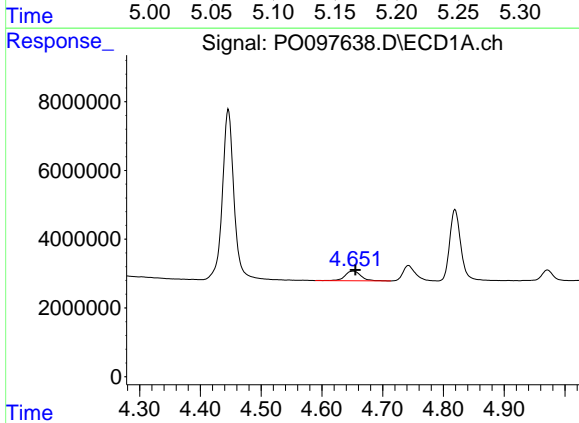
R.T.: 6.104 min
 Delta R.T.: 0.000 min
 Response: 32908965
 Conc: 463.32 ng/ml

Instrument :
 ECD_O
 ClientSampleId :



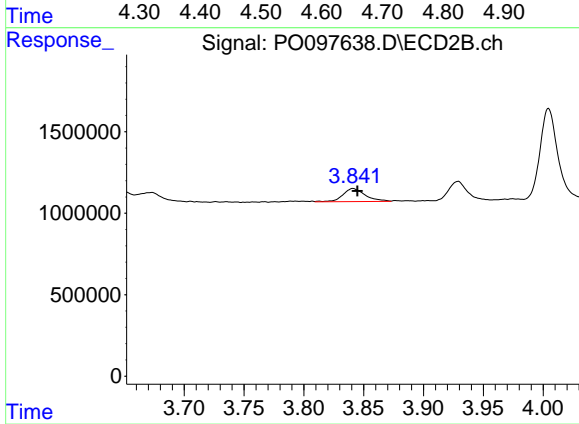
#7 AR-1016-5

R.T.: 5.170 min
 Delta R.T.: -0.004 min
 Response: 9186612
 Conc: 502.32 ng/ml



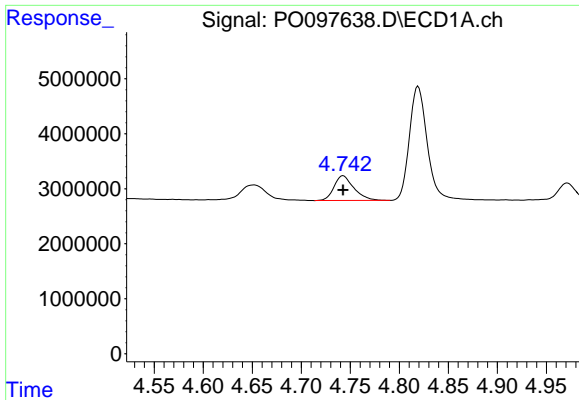
#8 AR-1221-1

R.T.: 4.652 min
 Delta R.T.: -0.003 min
 Response: 5157504
 Conc: 128.15 ng/ml



#8 AR-1221-1

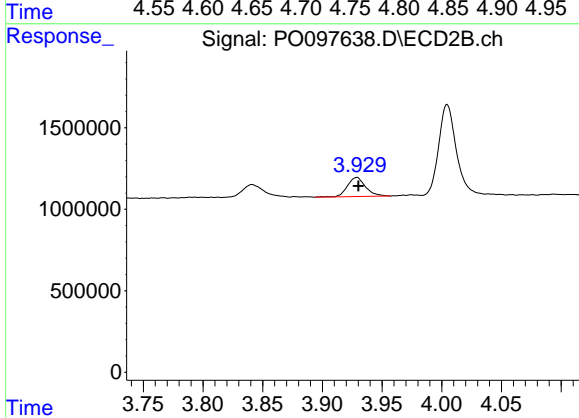
R.T.: 3.841 min
 Delta R.T.: -0.004 min
 Response: 1051640
 Conc: 128.46 ng/ml



#9 AR-1221-2

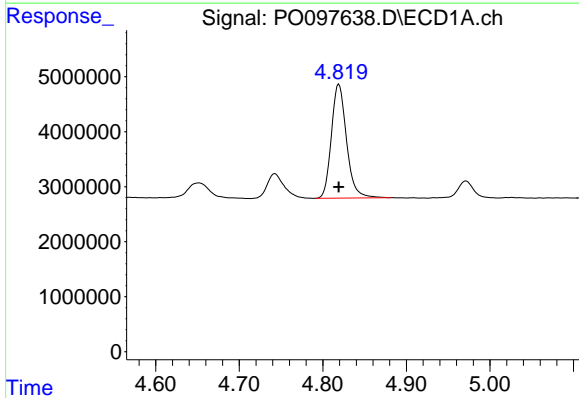
R.T.: 4.743 min
 Delta R.T.: 0.000 min
 Response: 6362637
 Conc: 211.67 ng/ml

Instrument :
 ECD_O
 ClientSampleId :



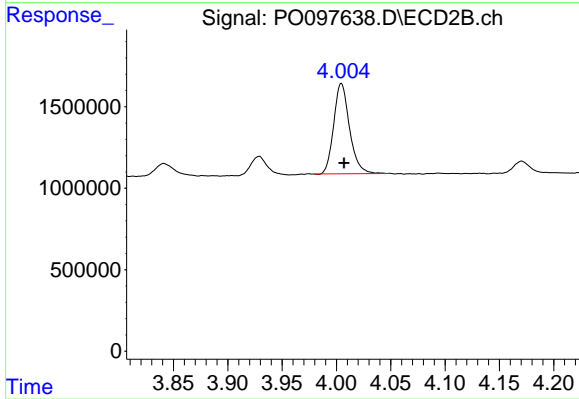
#9 AR-1221-2

R.T.: 3.929 min
 Delta R.T.: -0.001 min
 Response: 1244993
 Conc: 214.81 ng/ml



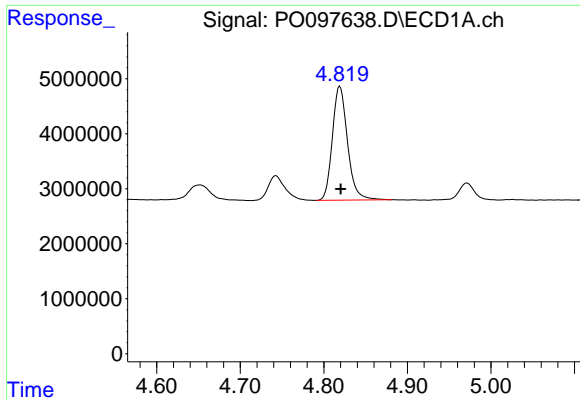
#10 AR-1221-3

R.T.: 4.819 min
 Delta R.T.: 0.000 min
 Response: 26025518
 Conc: 292.16 ng/ml



#10 AR-1221-3

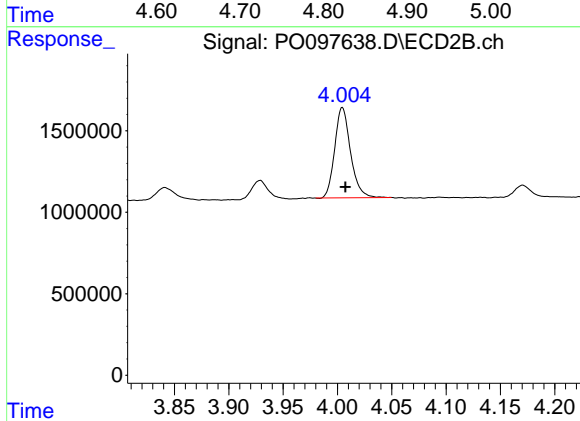
R.T.: 4.005 min
 Delta R.T.: -0.002 min
 Response: 5614929
 Conc: 305.36 ng/ml



#11 AR-1232-1

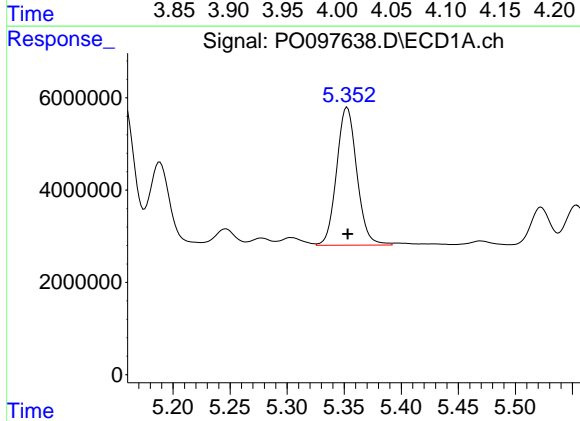
R.T.: 4.819 min
 Delta R.T.: 0.000 min
 Response: 26025518
 Conc: 352.86 ng/ml

Instrument :
 ECD_O
 ClientSampleId :



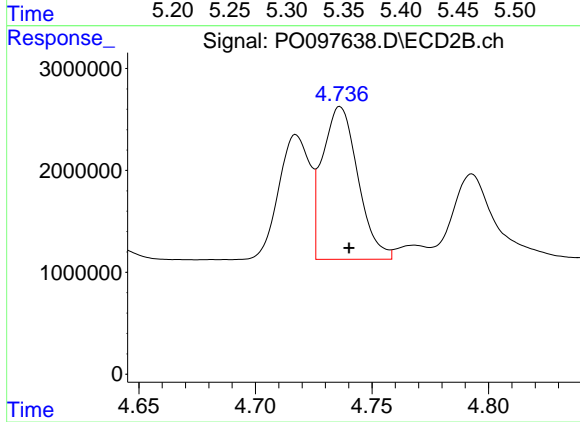
#11 AR-1232-1

R.T.: 4.005 min
 Delta R.T.: -0.003 min
 Response: 5614929
 Conc: 372.68 ng/ml



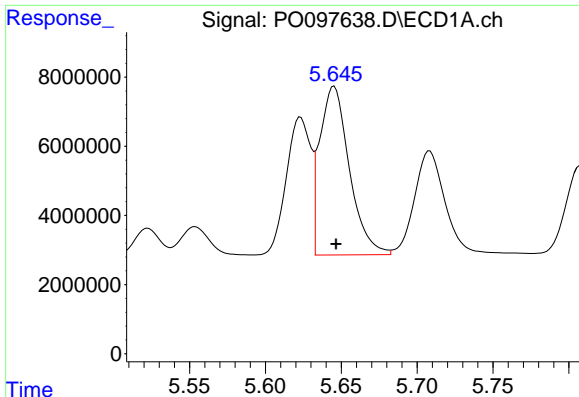
#12 AR-1232-2

R.T.: 5.353 min
 Delta R.T.: 0.000 min
 Response: 36910104
 Conc: 963.17 ng/ml



#12 AR-1232-2

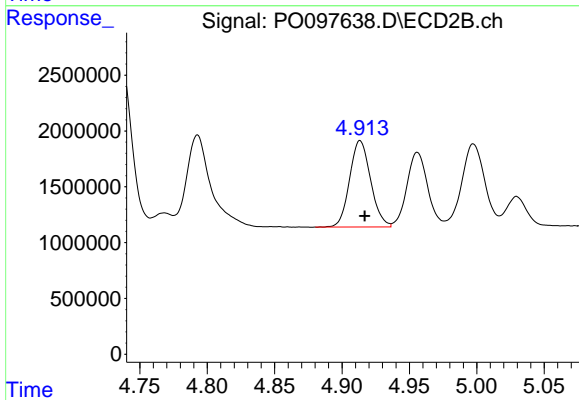
R.T.: 4.736 min
 Delta R.T.: -0.004 min
 Response: 15896135
 Conc: 1138.67 ng/ml



#13 AR-1232-3

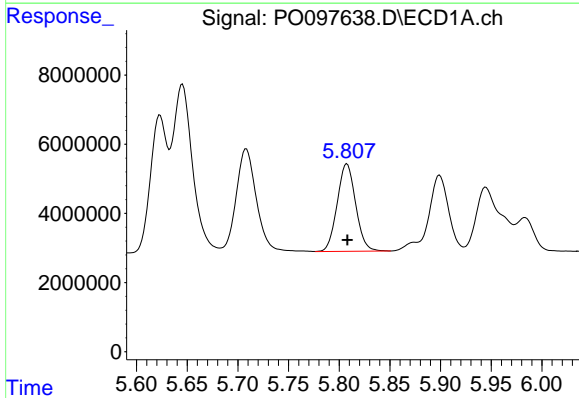
R.T.: 5.645 min
 Delta R.T.: -0.001 min
 Response: 66314685
 Conc: 1025.33 ng/ml

Instrument :
 ECD_O
 ClientSampleId :



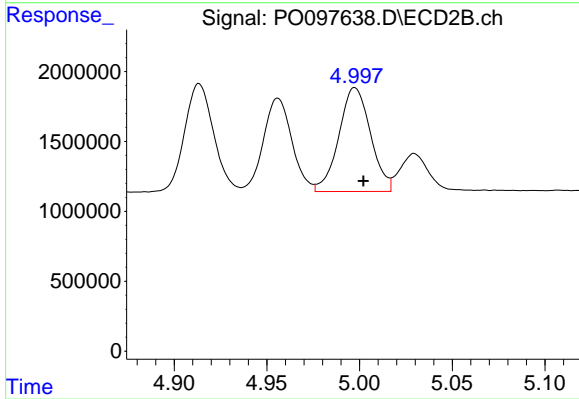
#13 AR-1232-3

R.T.: 4.913 min
 Delta R.T.: -0.003 min
 Response: 8435550
 Conc: 1201.04 ng/ml



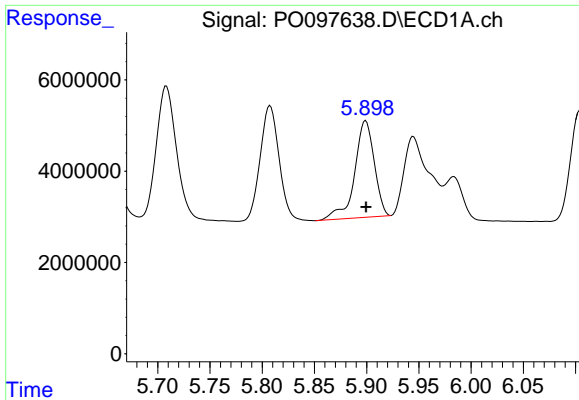
#14 AR-1232-4

R.T.: 5.808 min
 Delta R.T.: 0.000 min
 Response: 32098183
 Conc: 1007.67 ng/ml



#14 AR-1232-4

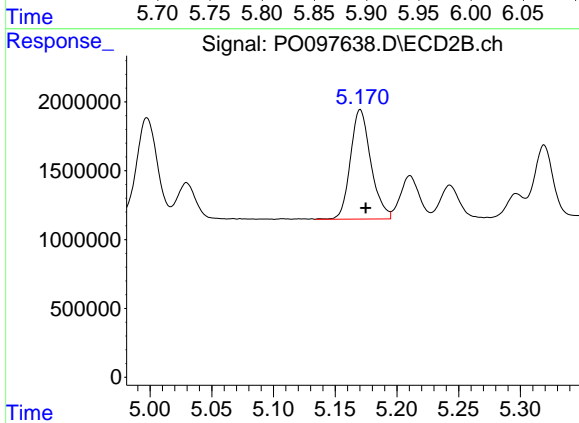
R.T.: 4.997 min
 Delta R.T.: -0.005 min
 Response: 8828786
 Conc: 1248.67 ng/ml



#15 AR-1232-5

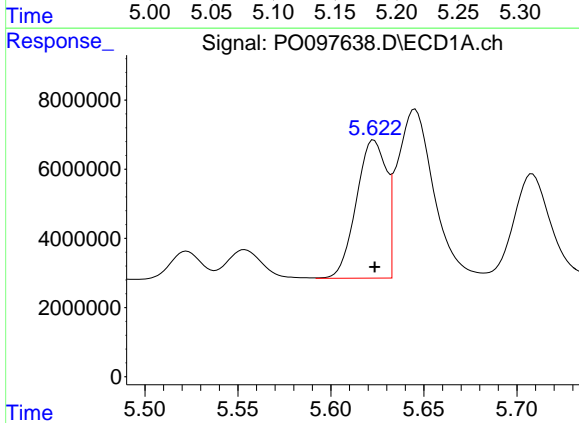
R.T.: 5.899 min
 Delta R.T.: 0.000 min
 Response: 27690445
 Conc: 941.07 ng/ml

Instrument :
 ECD_O
 ClientSampleId :



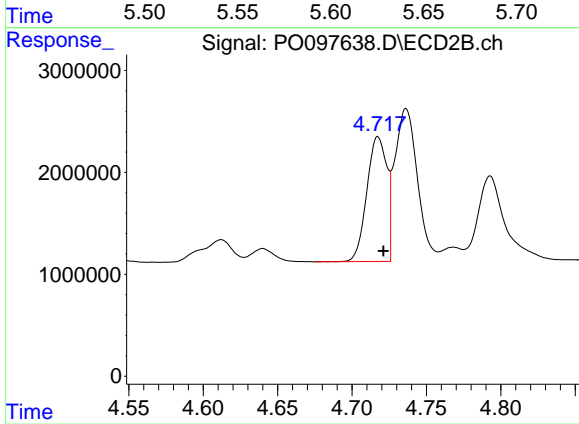
#15 AR-1232-5

R.T.: 5.170 min
 Delta R.T.: -0.004 min
 Response: 9186612
 Conc: 1167.12 ng/ml



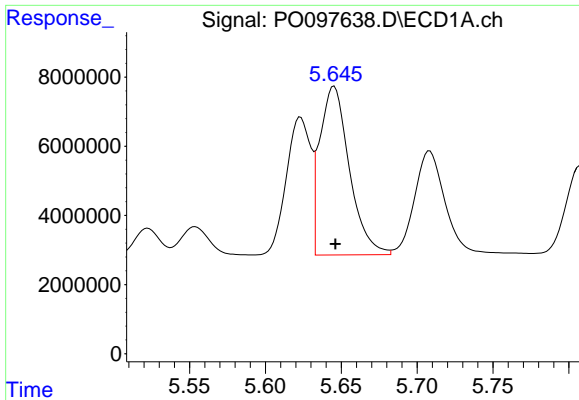
#16 AR-1242-1

R.T.: 5.623 min
 Delta R.T.: 0.000 min
 Response: 44717226
 Conc: 552.13 ng/ml



#16 AR-1242-1

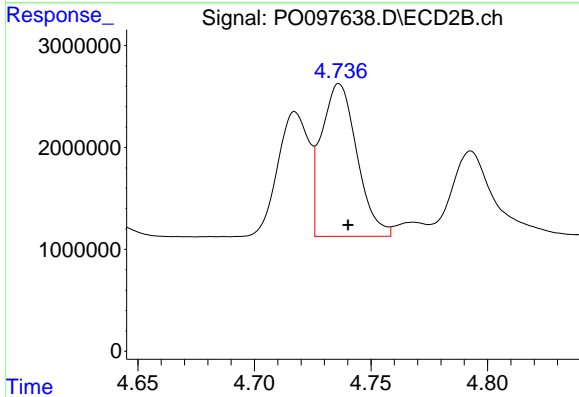
R.T.: 4.717 min
 Delta R.T.: -0.004 min
 Response: 11444848
 Conc: 593.30 ng/ml



#17 AR-1242-2

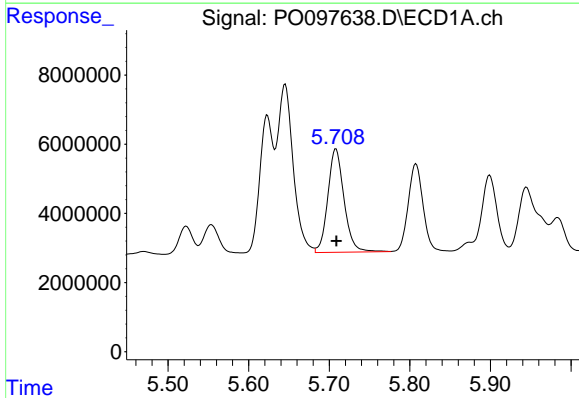
R.T.: 5.645 min
 Delta R.T.: 0.000 min
 Response: 66314685
 Conc: 531.00 ng/ml

Instrument :
 ECD_O
 ClientSampleId :



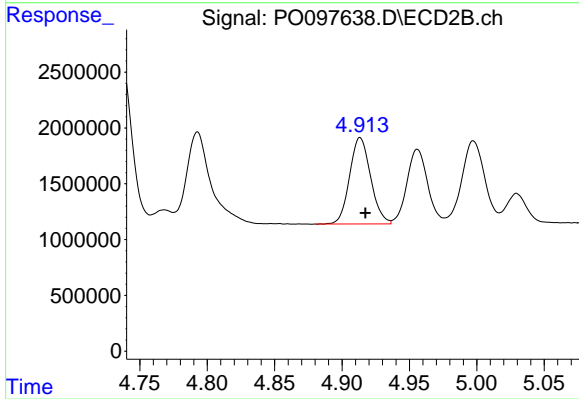
#17 AR-1242-2

R.T.: 4.736 min
 Delta R.T.: -0.004 min
 Response: 15896135
 Conc: 584.00 ng/ml



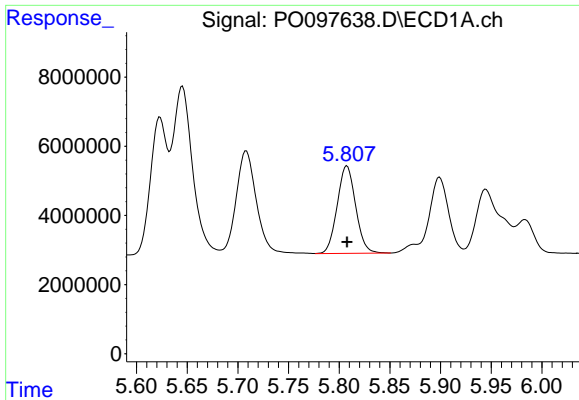
#18 AR-1242-3

R.T.: 5.708 min
 Delta R.T.: 0.000 min
 Response: 41880261
 Conc: 509.37 ng/ml



#18 AR-1242-3

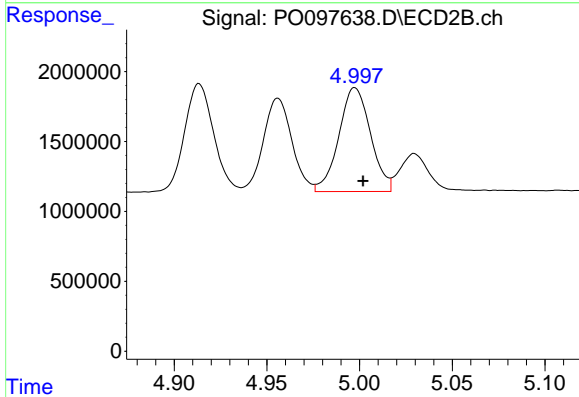
R.T.: 4.913 min
 Delta R.T.: -0.004 min
 Response: 8435550
 Conc: 587.81 ng/ml



#19 AR-1242-4

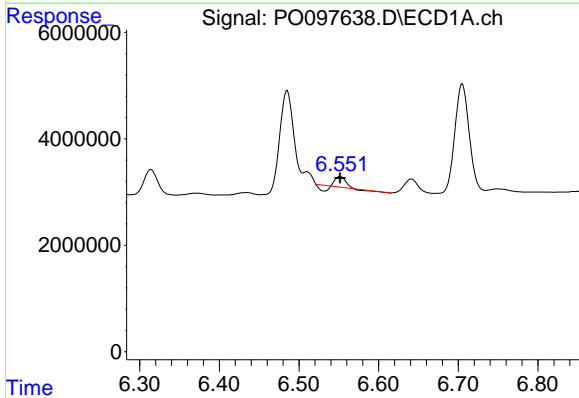
R.T.: 5.808 min
 Delta R.T.: 0.000 min
 Response: 32098183
 Conc: 511.32 ng/ml

Instrument :
 ECD_O
 ClientSampleId :



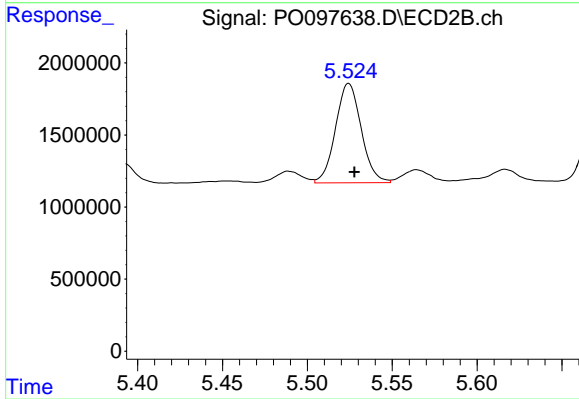
#19 AR-1242-4

R.T.: 4.997 min
 Delta R.T.: -0.004 min
 Response: 8828786
 Conc: 557.43 ng/ml



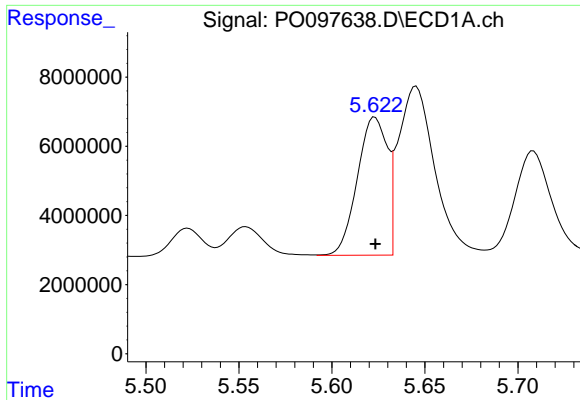
#20 AR-1242-5

R.T.: 6.552 min
 Delta R.T.: 0.000 min
 Response: 1155962
 Conc: 18.38 ng/ml



#20 AR-1242-5

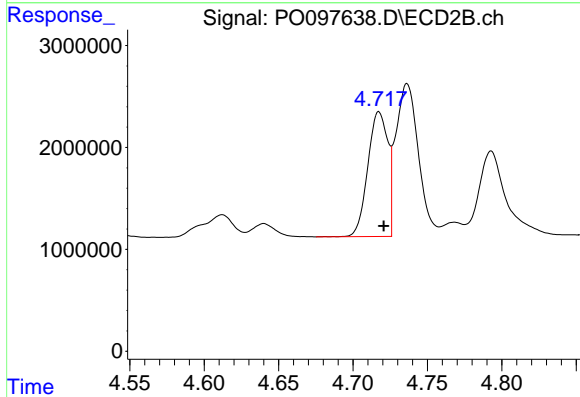
R.T.: 5.524 min
 Delta R.T.: -0.003 min
 Response: 7276049
 Conc: 412.28 ng/ml



#21 AR-1248-1

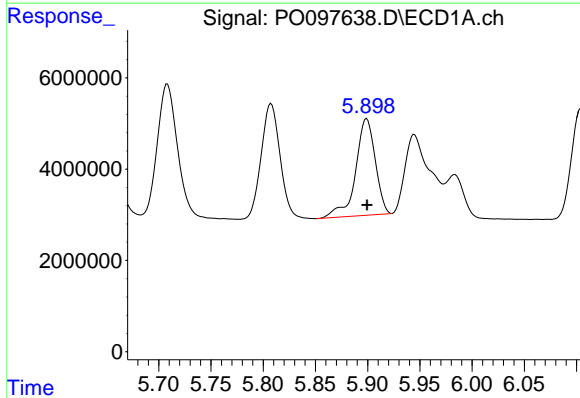
R.T.: 5.623 min
 Delta R.T.: 0.000 min
 Response: 44717226
 Conc: 758.20 ng/ml

Instrument :
 ECD_O
 ClientSampleId :



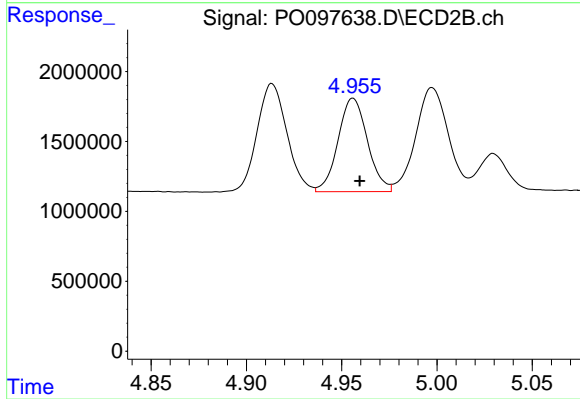
#21 AR-1248-1

R.T.: 4.717 min
 Delta R.T.: -0.003 min
 Response: 11444848
 Conc: 832.85 ng/ml



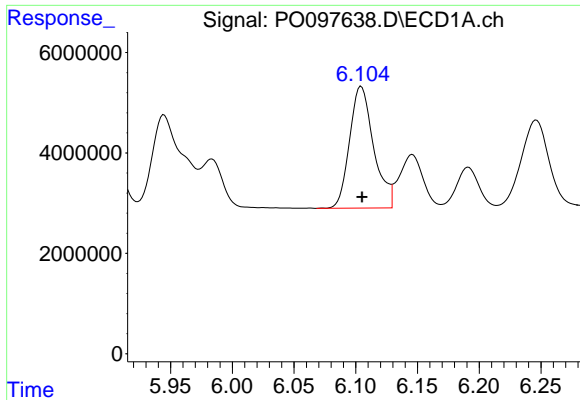
#22 AR-1248-2

R.T.: 5.899 min
 Delta R.T.: 0.000 min
 Response: 27690445
 Conc: 279.97 ng/ml



#22 AR-1248-2

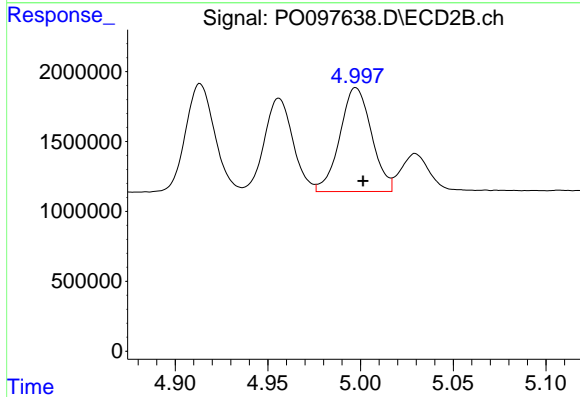
R.T.: 4.956 min
 Delta R.T.: -0.004 min
 Response: 7179866
 Conc: 323.80 ng/ml



#23 AR-1248-3

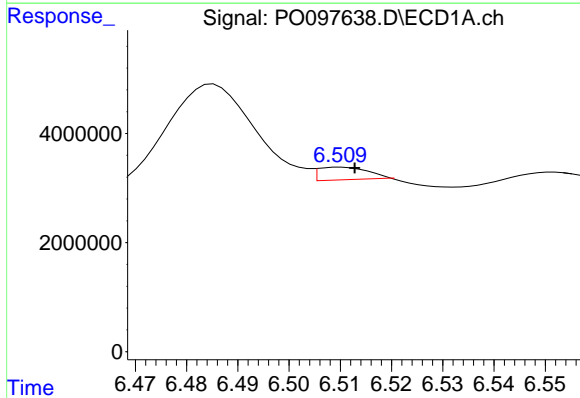
R.T.: 6.104 min
 Delta R.T.: 0.000 min
 Response: 32908965
 Conc: 317.63 ng/ml

Instrument :
 ECD_O
 ClientSampleId :



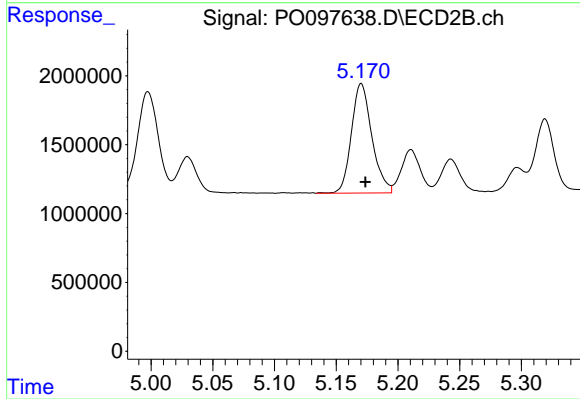
#23 AR-1248-3

R.T.: 4.997 min
 Delta R.T.: -0.004 min
 Response: 8828786
 Conc: 383.98 ng/ml



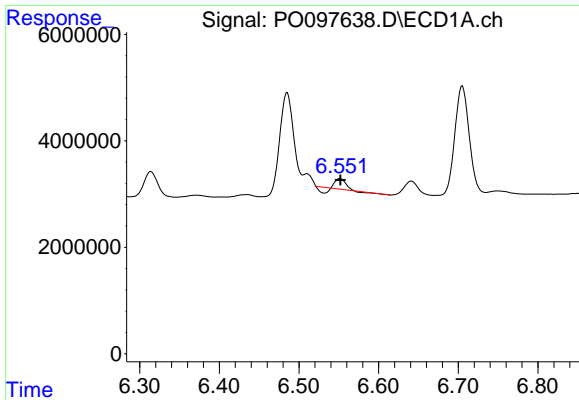
#24 AR-1248-4

R.T.: 6.510 min
 Delta R.T.: -0.003 min
 Response: 1228216
 Conc: 13.43 ng/ml



#24 AR-1248-4

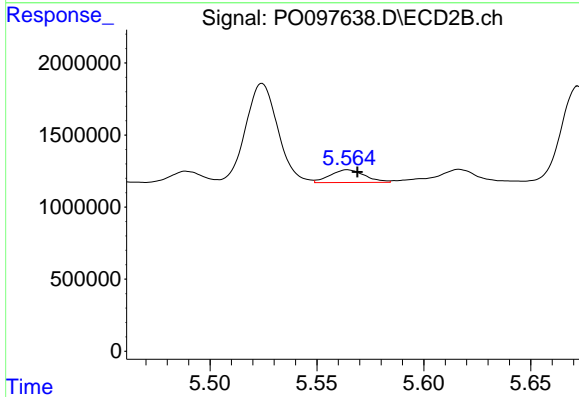
R.T.: 5.170 min
 Delta R.T.: -0.004 min
 Response: 9186612
 Conc: 338.53 ng/ml



#25 AR-1248-5

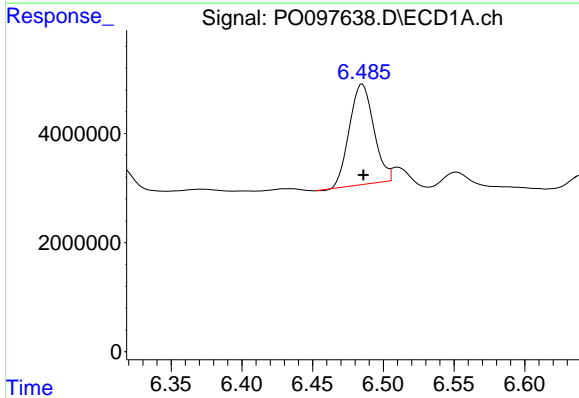
R.T.: 6.552 min
 Delta R.T.: 0.000 min
 Response: 1155962
 Conc: 11.39 ng/ml

Instrument :
 ECD_O
 ClientSampleId :



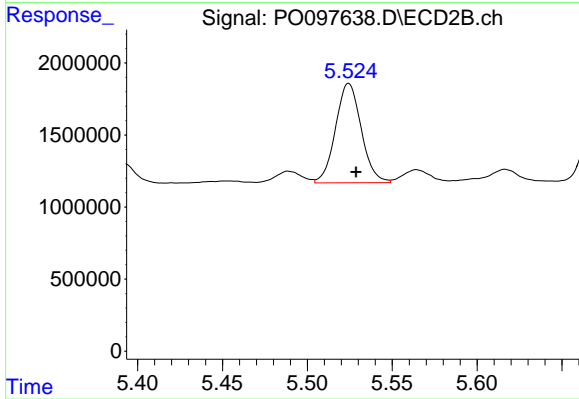
#25 AR-1248-5

R.T.: 5.564 min
 Delta R.T.: -0.005 min
 Response: 1001334
 Conc: 44.29 ng/ml



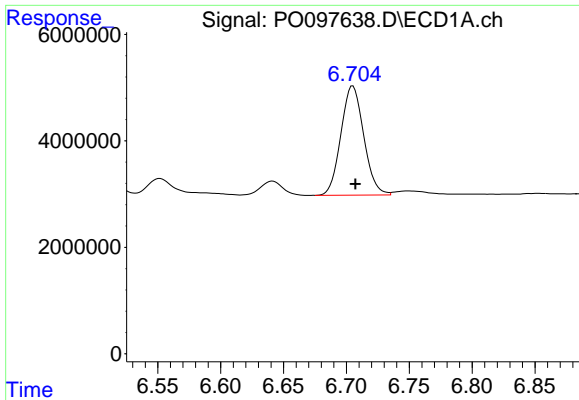
#26 AR-1254-1

R.T.: 6.485 min
 Delta R.T.: 0.000 min
 Response: 22025412
 Conc: 200.34 ng/ml



#26 AR-1254-1

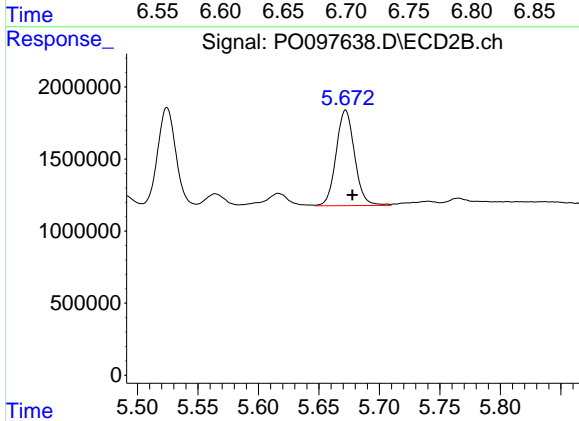
R.T.: 5.524 min
 Delta R.T.: -0.004 min
 Response: 7276049
 Conc: 188.52 ng/ml



#27 AR-1254-2

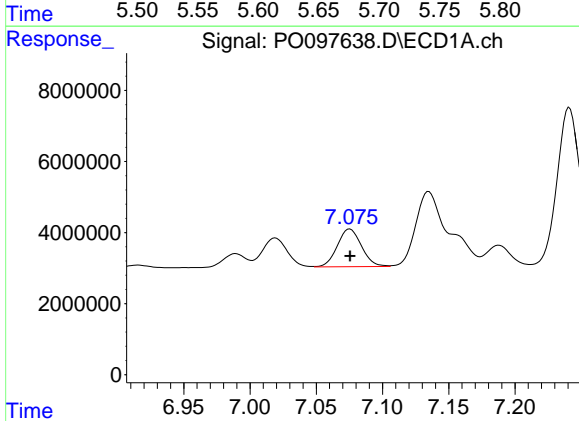
R.T.: 6.705 min
 Delta R.T.: -0.002 min
 Response: 25966647
 Conc: 159.34 ng/ml

Instrument :
 ECD_O
 ClientSampleId :



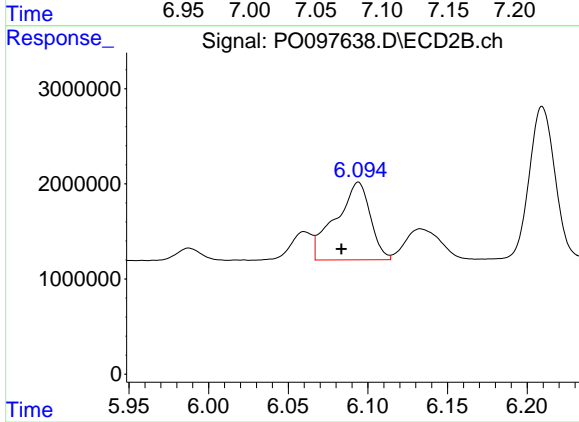
#27 AR-1254-2

R.T.: 5.672 min
 Delta R.T.: -0.005 min
 Response: 7059071
 Conc: 207.25 ng/ml



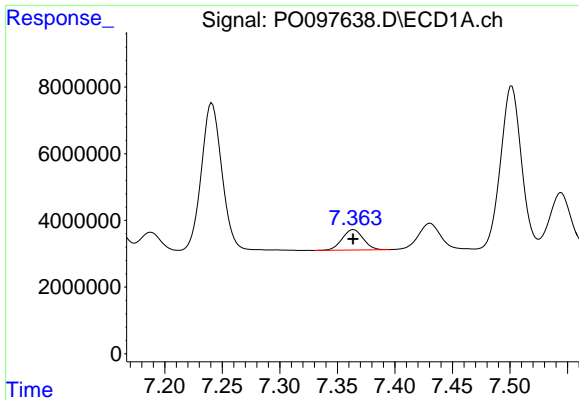
#28 AR-1254-3

R.T.: 7.075 min
 Delta R.T.: 0.000 min
 Response: 13472419
 Conc: 82.73 ng/ml



#28 AR-1254-3

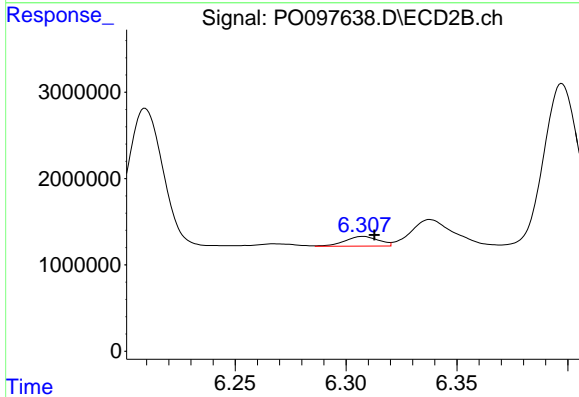
R.T.: 6.094 min
 Delta R.T.: 0.011 min
 Response: 12336393
 Conc: 232.50 ng/ml



#29 AR-1254-4

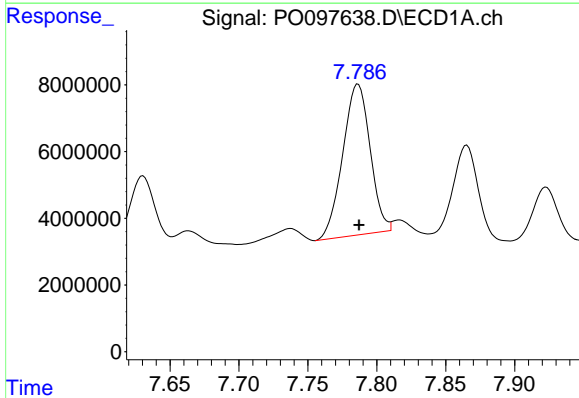
R.T.: 7.364 min
 Delta R.T.: 0.000 min
 Response: 7826099
 Conc: 80.29 ng/ml

Instrument :
 ECD_O
 ClientSampleId :



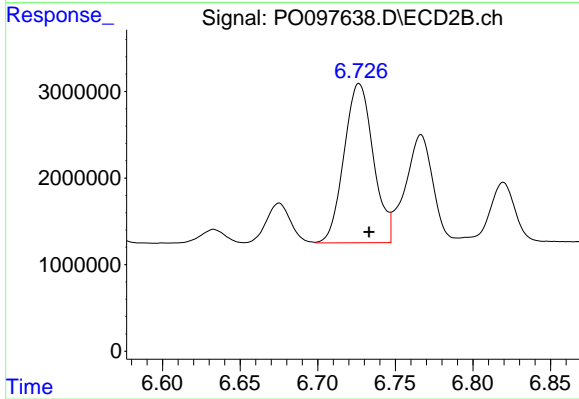
#29 AR-1254-4

R.T.: 6.308 min
 Delta R.T.: -0.005 min
 Response: 1183577
 Conc: 43.40 ng/ml



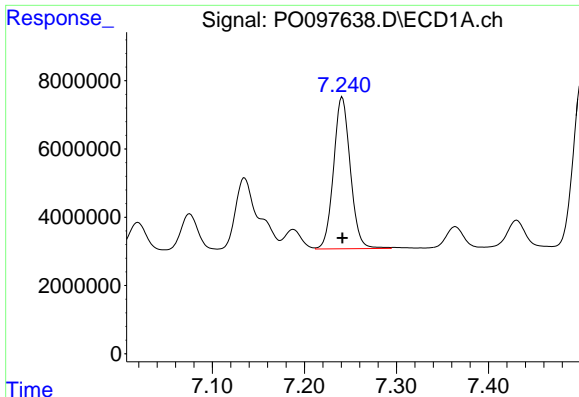
#30 AR-1254-5

R.T.: 7.786 min
 Delta R.T.: 0.000 min
 Response: 62481676
 Conc: 553.31 ng/ml



#30 AR-1254-5

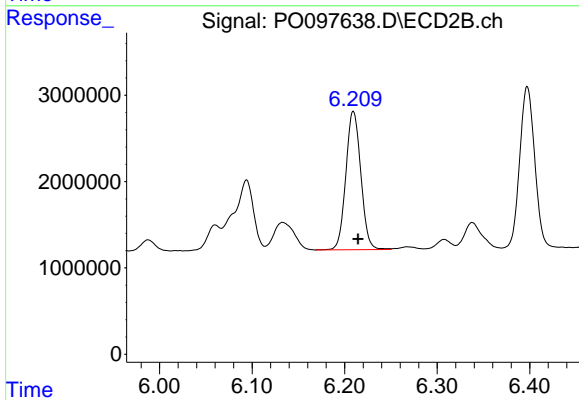
R.T.: 6.727 min
 Delta R.T.: -0.006 min
 Response: 24128013
 Conc: 547.26 ng/ml



#31 AR-1260-1

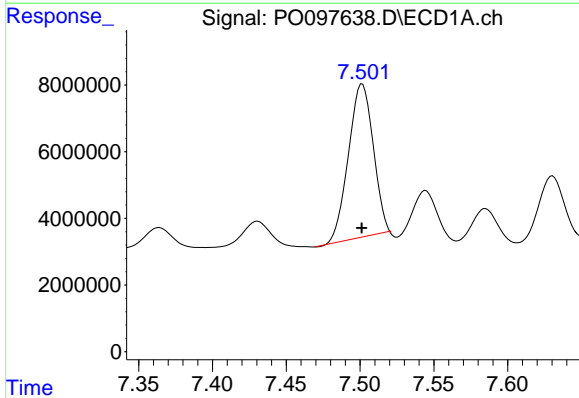
R.T.: 7.241 min
 Delta R.T.: 0.000 min
 Response: 56060596
 Conc: 439.19 ng/ml

Instrument :
 ECD_O
 ClientSampleId :



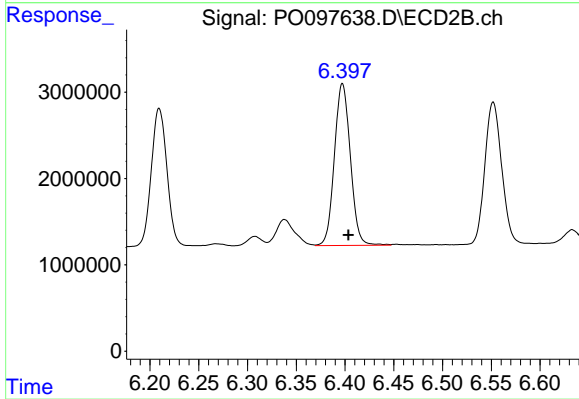
#31 AR-1260-1

R.T.: 6.209 min
 Delta R.T.: -0.005 min
 Response: 18055308
 Conc: 483.42 ng/ml



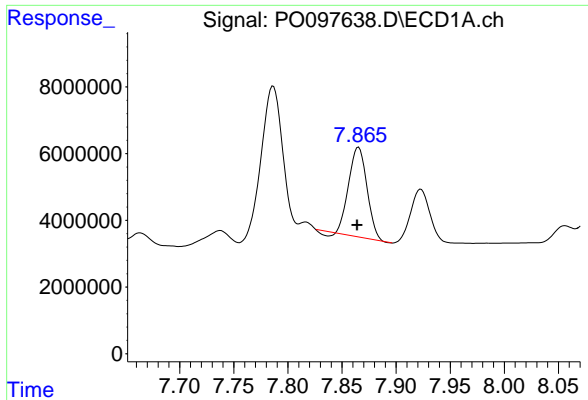
#32 AR-1260-2

R.T.: 7.502 min
 Delta R.T.: 0.000 min
 Response: 53673947
 Conc: 393.89 ng/ml



#32 AR-1260-2

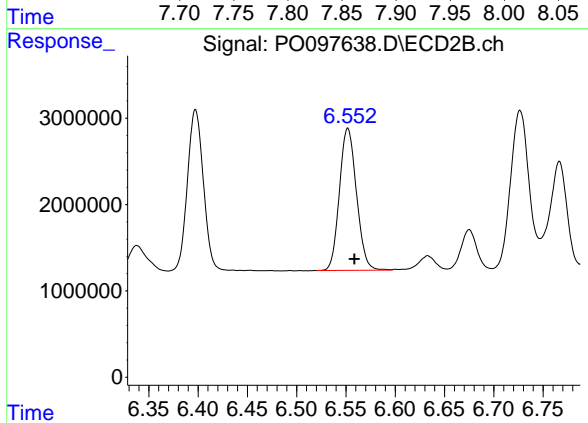
R.T.: 6.397 min
 Delta R.T.: -0.006 min
 Response: 21389607
 Conc: 505.49 ng/ml



#33 AR-1260-3

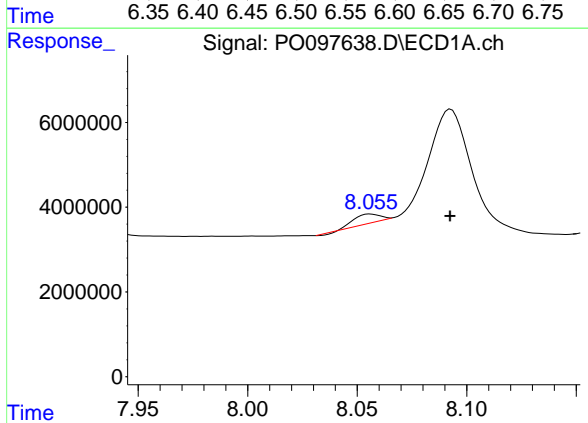
R.T.: 7.865 min
 Delta R.T.: 0.001 min
 Response: 31025419
 Conc: 293.53 ng/ml

Instrument :
 ECD_O
 ClientSampleId :



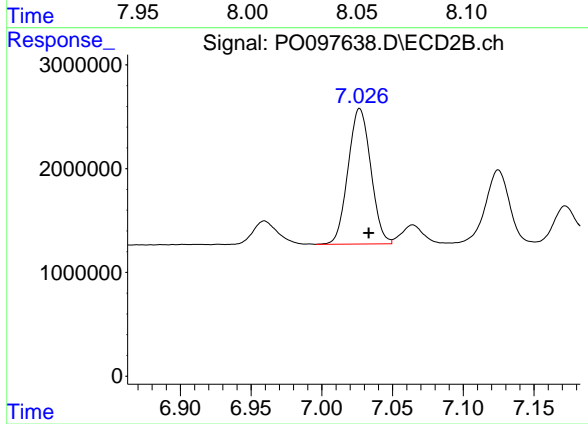
#33 AR-1260-3

R.T.: 6.552 min
 Delta R.T.: -0.007 min
 Response: 19803121
 Conc: 473.10 ng/ml



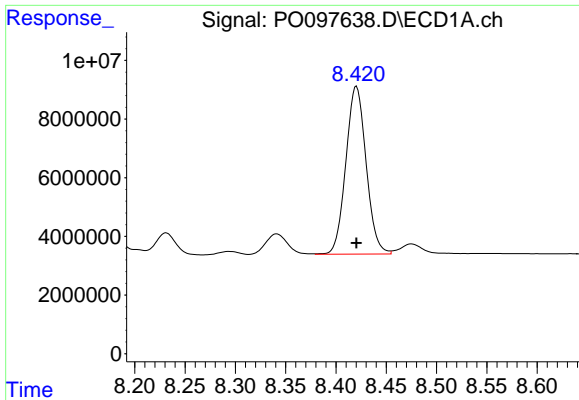
#34 AR-1260-4

R.T.: 8.056 min
 Delta R.T.: -0.036 min
 Response: 1636372
 Conc: 14.47 ng/ml



#34 AR-1260-4

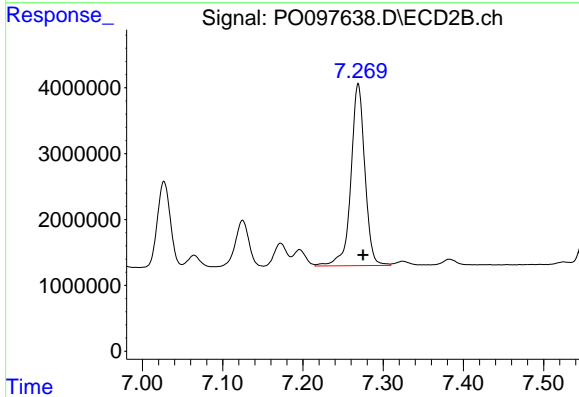
R.T.: 7.027 min
 Delta R.T.: -0.006 min
 Response: 14603435
 Conc: 451.52 ng/ml



#35 AR-1260-5

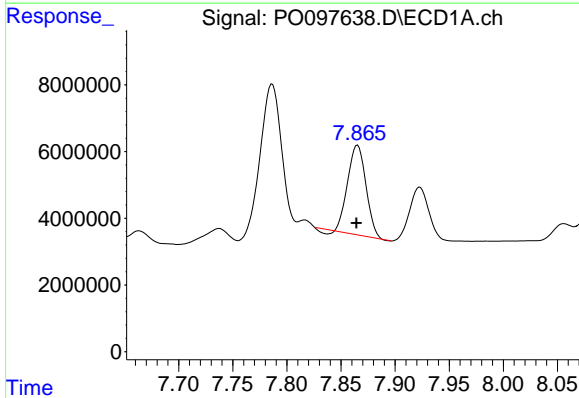
R.T.: 8.420 min
 Delta R.T.: 0.000 min
 Response: 80274337
 Conc: 427.04 ng/ml

Instrument :
 ECD_O
 ClientSampleId :



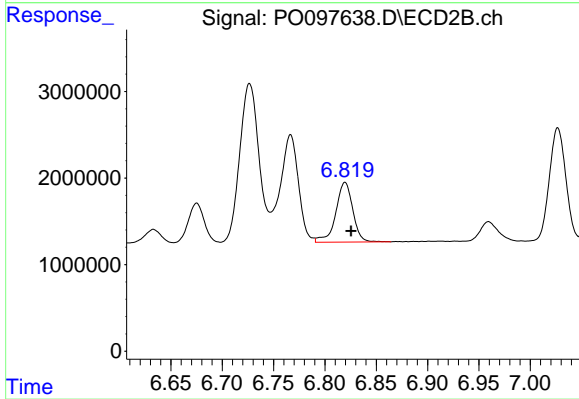
#35 AR-1260-5

R.T.: 7.269 min
 Delta R.T.: -0.006 min
 Response: 33349573
 Conc: 505.08 ng/ml



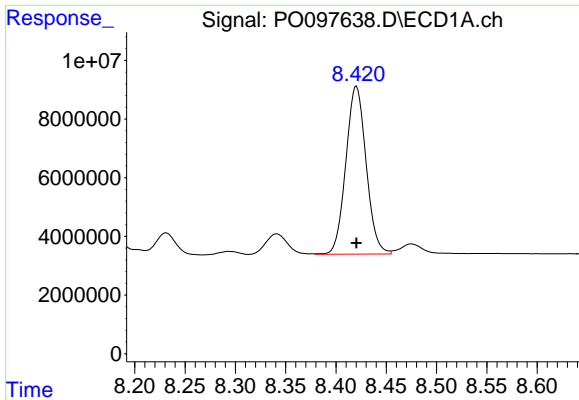
#36 AR-1262-1

R.T.: 7.865 min
 Delta R.T.: 0.001 min
 Response: 31025419
 Conc: 206.17 ng/ml



#36 AR-1262-1

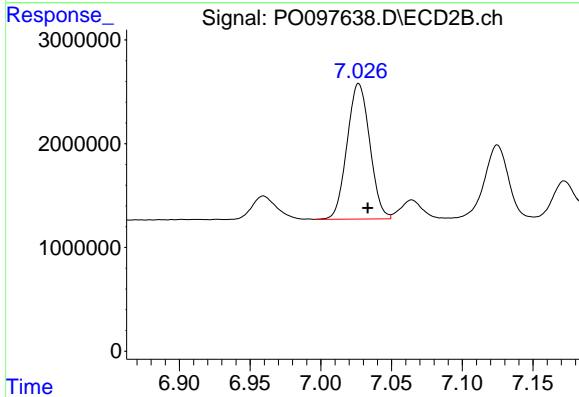
R.T.: 6.820 min
 Delta R.T.: -0.006 min
 Response: 7964125
 Conc: 396.84 ng/ml



#37 AR-1262-2

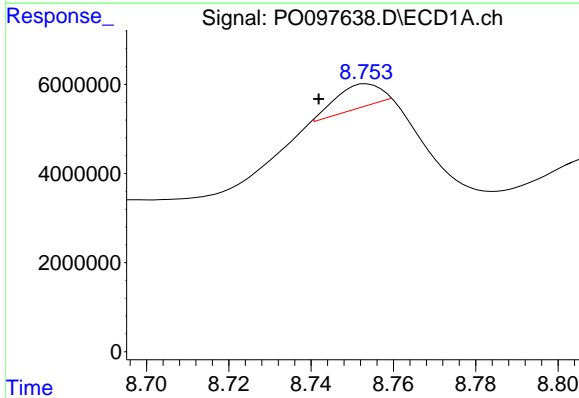
R.T.: 8.420 min
 Delta R.T.: 0.000 min
 Response: 80274337
 Conc: 366.57 ng/ml

Instrument :
 ECD_O
 ClientSampleId :



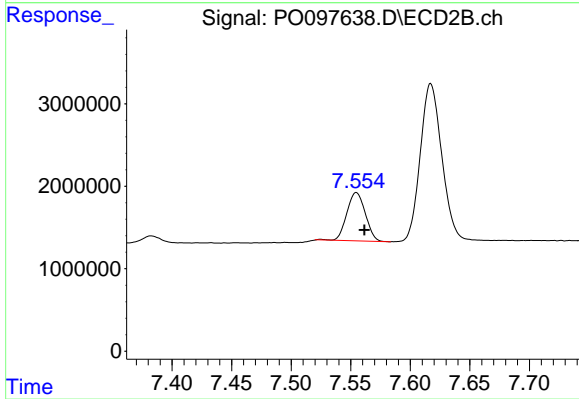
#37 AR-1262-2

R.T.: 7.027 min
 Delta R.T.: -0.006 min
 Response: 14603435
 Conc: 334.24 ng/ml



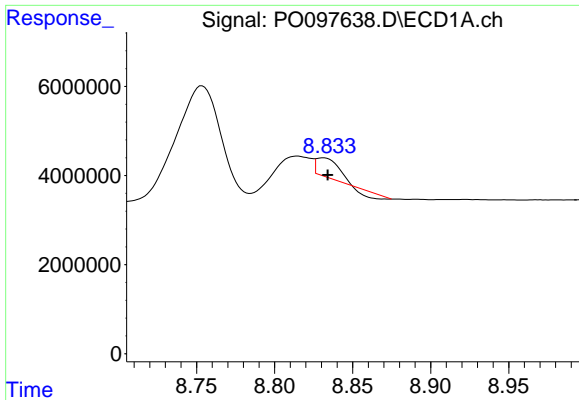
#38 AR-1262-3

R.T.: 8.754 min
 Delta R.T.: 0.012 min
 Response: 4182220
 Conc: 26.98 ng/ml



#38 AR-1262-3

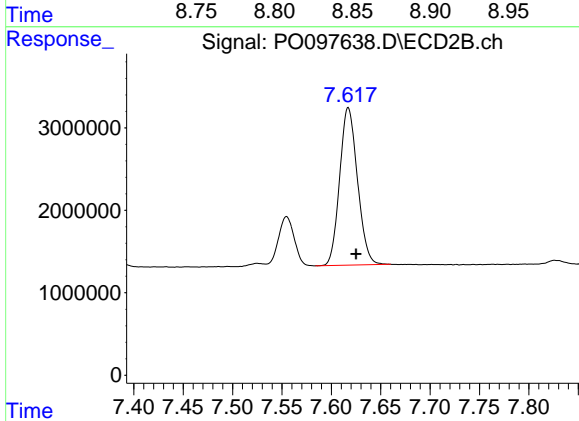
R.T.: 7.555 min
 Delta R.T.: -0.007 min
 Response: 6348340
 Conc: 203.70 ng/ml



#39 AR-1262-4

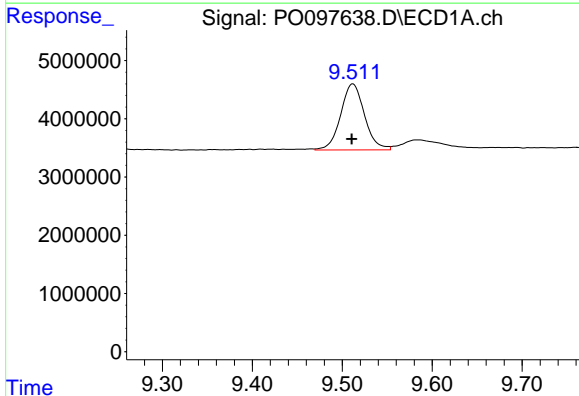
R.T.: 8.832 min
 Delta R.T.: -0.002 min
 Response: 3243241
 Conc: 26.02 ng/ml

Instrument :
 ECD_O
 ClientSampleId :



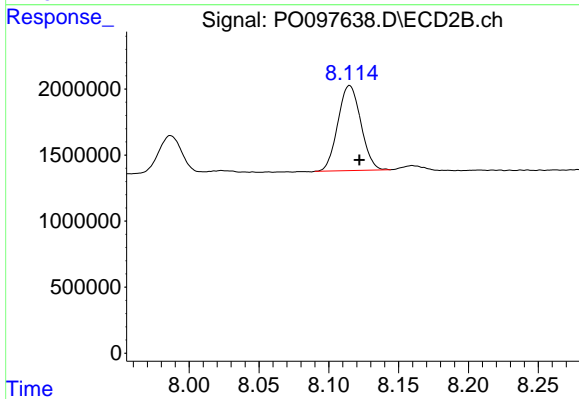
#39 AR-1262-4

R.T.: 7.617 min
 Delta R.T.: -0.008 min
 Response: 23990002
 Conc: 426.50 ng/ml



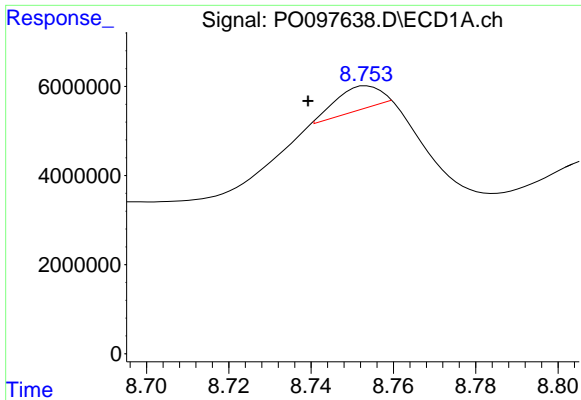
#40 AR-1262-5

R.T.: 9.512 min
 Delta R.T.: 0.001 min
 Response: 20902095
 Conc: 303.94 ng/ml



#40 AR-1262-5

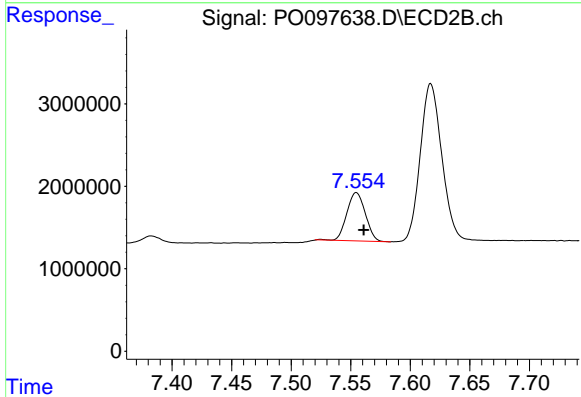
R.T.: 8.115 min
 Delta R.T.: -0.007 min
 Response: 7371280
 Conc: 313.33 ng/ml



#41 AR-1268-1

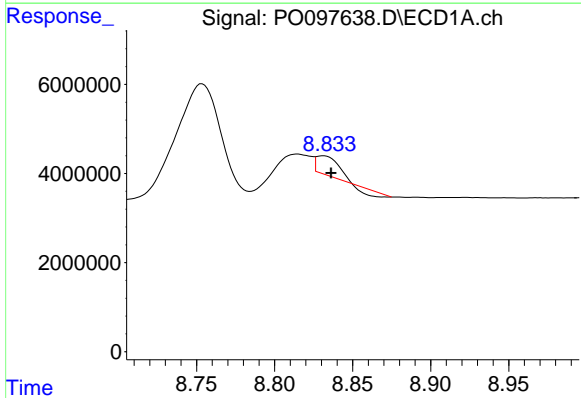
R.T.: 8.754 min
 Delta R.T.: 0.014 min
 Response: 4182220
 Conc: 14.73 ng/ml

Instrument :
 ECD_O
 ClientSampleId :



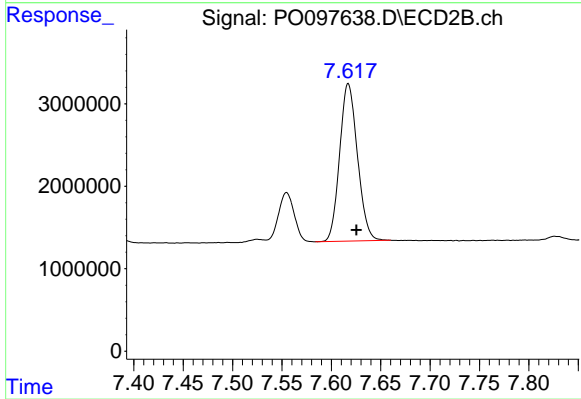
#41 AR-1268-1

R.T.: 7.555 min
 Delta R.T.: -0.006 min
 Response: 6348340
 Conc: 66.32 ng/ml



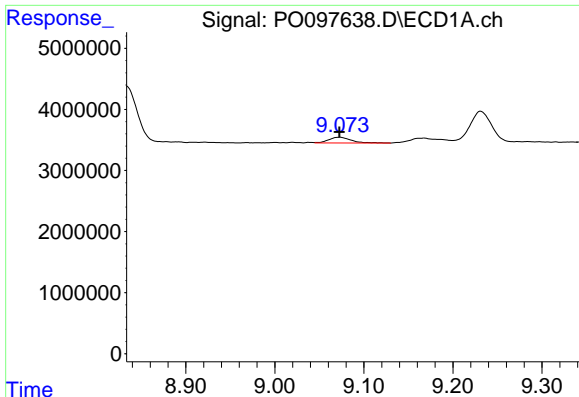
#42 AR-1268-2

R.T.: 8.832 min
 Delta R.T.: -0.005 min
 Response: 3243241
 Conc: 12.76 ng/ml



#42 AR-1268-2

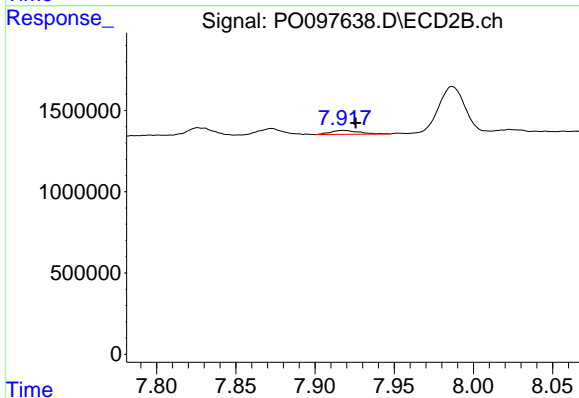
R.T.: 7.617 min
 Delta R.T.: -0.008 min
 Response: 23990002
 Conc: 289.40 ng/ml



#43 AR-1268-3

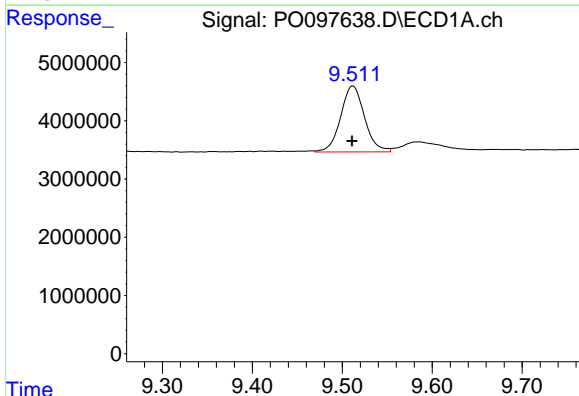
R.T.: 9.073 min
 Delta R.T.: 0.000 min
 Response: 1636143
 Conc: 7.25 ng/ml

Instrument :
 ECD_O
 ClientSampleId :



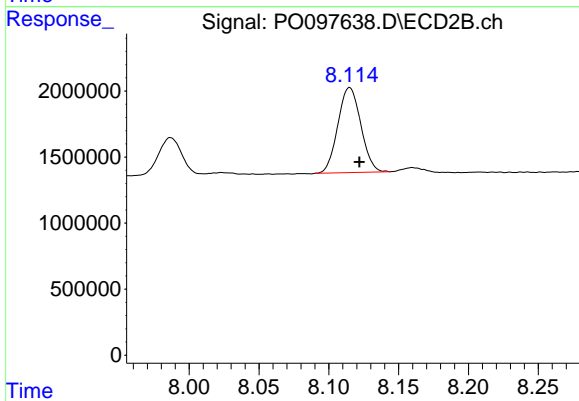
#43 AR-1268-3

R.T.: 7.918 min
 Delta R.T.: -0.008 min
 Response: 297223
 Conc: 15.00 ng/ml



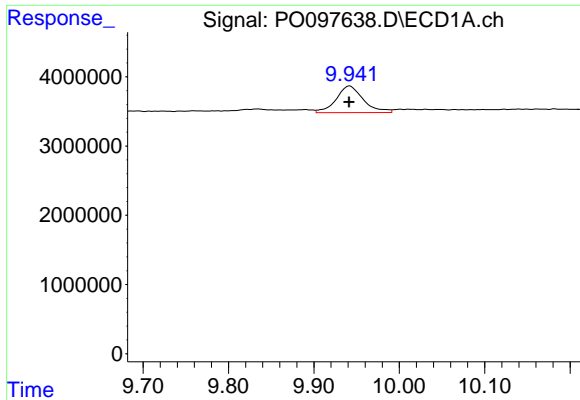
#44 AR-1268-4

R.T.: 9.512 min
 Delta R.T.: 0.001 min
 Response: 20902095
 Conc: 271.57 ng/ml



#44 AR-1268-4

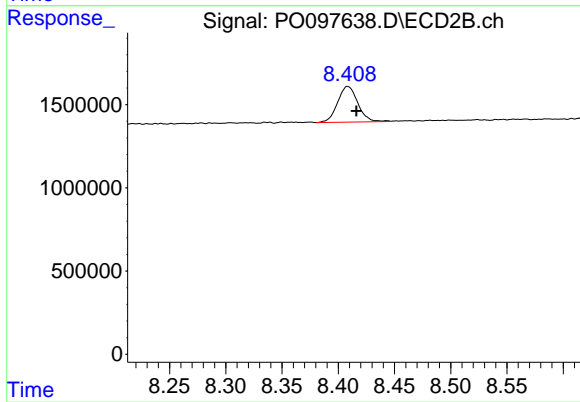
R.T.: 8.115 min
 Delta R.T.: -0.007 min
 Response: 7371280
 Conc: 285.24 ng/ml



#45 AR-1268-5

R.T.: 9.942 min
 Delta R.T.: 0.000 min
 Response: 8499703
 Conc: 12.31 ng/ml

Instrument :
 ECD_O
 ClientSampleId :



#45 AR-1268-5

R.T.: 8.409 min
 Delta R.T.: -0.008 min
 Response: 2688642
 Conc: 11.79 ng/ml