

Data Path : Z:\pestpcbsrv\HPCHEM1\ECD_0\Data\P0092518\
 Data File : P0049321.D
 Signal(s) : Signal #1: ECD1A.CH Signal #2: ECD2B.CH
 Acq On : 26 Sep 2018 4:03
 Operator : SM/SJ
 Sample : J5068-25
 Misc :
 ALS Vial : 43 Sample Multiplier: 1

Instrument :
 ECD_0
 ClientSampleId :
 CONCRETE-WALL

Integration File signal 1: autoint1.e
 Integration File signal 2: autoint2.e
 Quant Time: Sep 26 07:49:00 2018
 Quant Method : Z:\pestpcbsrv\HPCHEM1\ECD_0\methods\P0091918.M
 Quant Title : GC EXTRACTABLES
 QLast Update : Thu Sep 20 02:02:28 2018
 Response via : Initial Calibration
 Integrator: ChemStation 6890 Scale Mode: Small noise peaks clipped

Volume Inj. : 2 µl
 Signal #1 Phase : ZB-MR1 Signal #2 Phase: ZB-MR2
 Signal #1 Info : 30Mx0.32mmx 0.50µ Signal #2 Info : 30M x 0.32mm x 0.25µm

Compound	RT#1	RT#2	Resp#1	Resp#2	ng/ml	ng/ml

System Monitoring Compounds						
1) SA Tetrachlo...	4.394	3.526	8446051	8023137	45.488	38.824
2) SA Decachlor...	10.110	8.458	6703850	4861992	24.388	23.750

Target Compounds

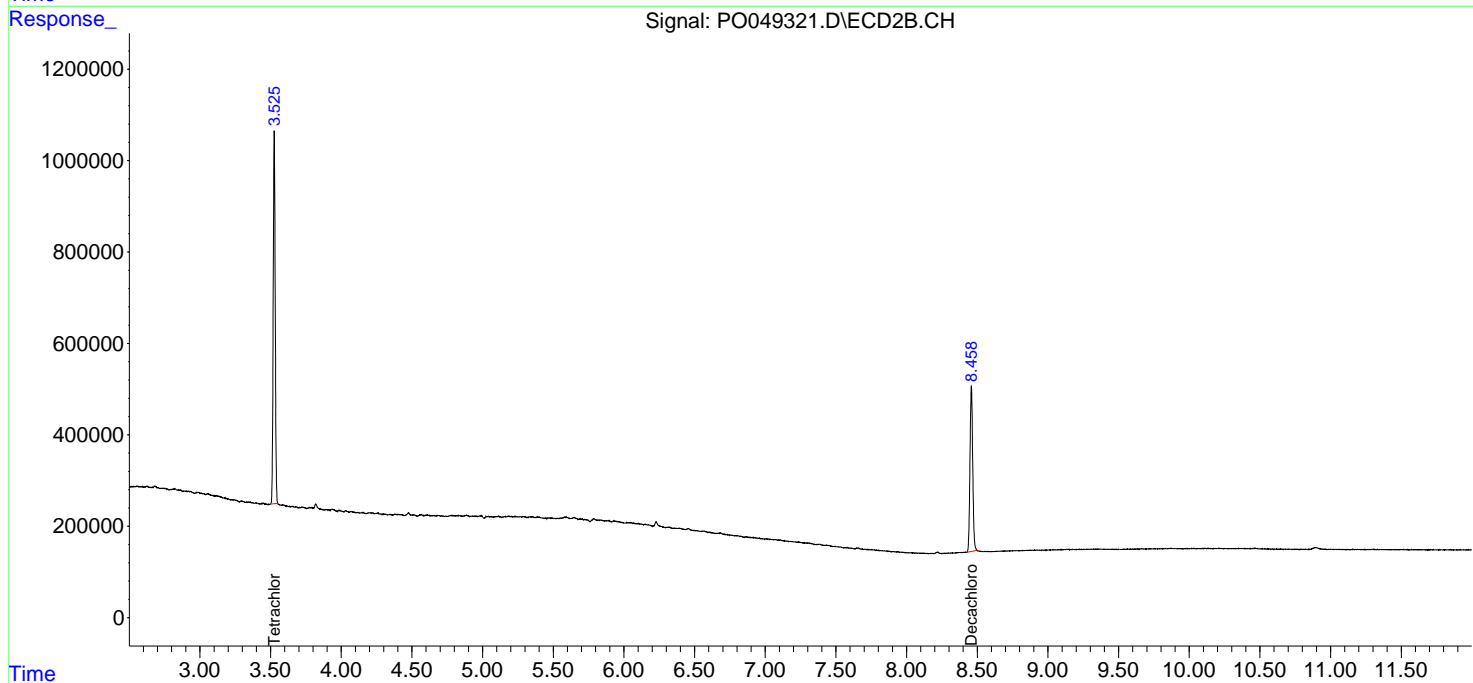
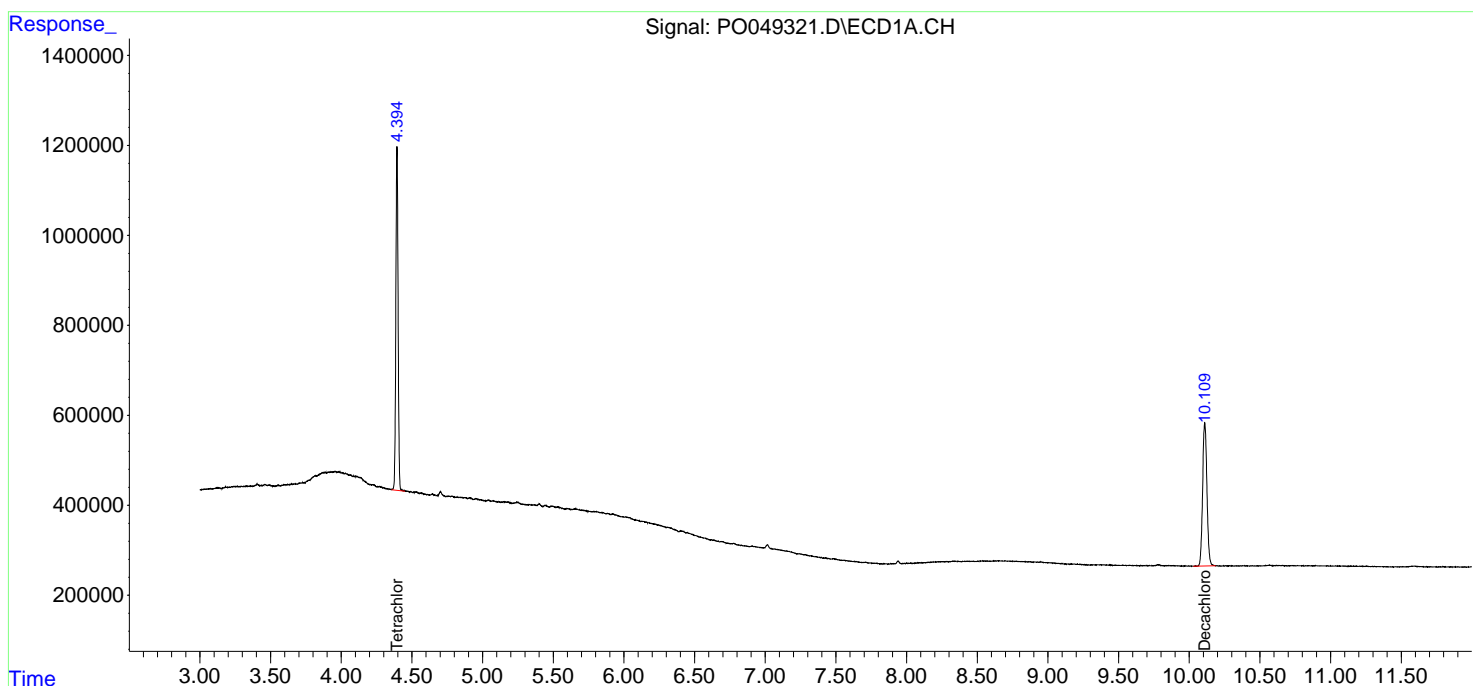
(f)=RT Delta > 1/2 Window (#)=Amounts differ by > 25% (m)=manual int.

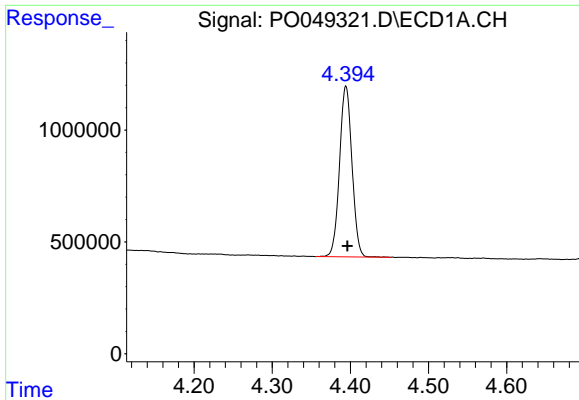
Data Path : Z:\pestpcbsrv\HPCHEM1\ECD_0\Data\P0092518\
 Data File : P0049321.D
 Signal(s) : Signal #1: ECD1A.CH Signal #2: ECD2B.CH
 Acq On : 26 Sep 2018 4:03
 Operator : SM/SJ
 Sample : J5068-25
 Misc :
 ALS Vial : 43 Sample Multiplier: 1

Instrument :
 ECD_O
 ClientSampleId :
 CONCRETE-WALL

Integration File signal 1: autoint1.e
 Integration File signal 2: autoint2.e
 Quant Time: Sep 26 07:49:00 2018
 Quant Method : Z:\pestpcbsrv\HPCHEM1\ECD_0\methods\P0091918.M
 Quant Title : GC EXTRACTABLES
 QLast Update : Thu Sep 20 02:02:28 2018
 Response via : Initial Calibration
 Integrator: ChemStation 6890 Scale Mode: Small noise peaks clipped

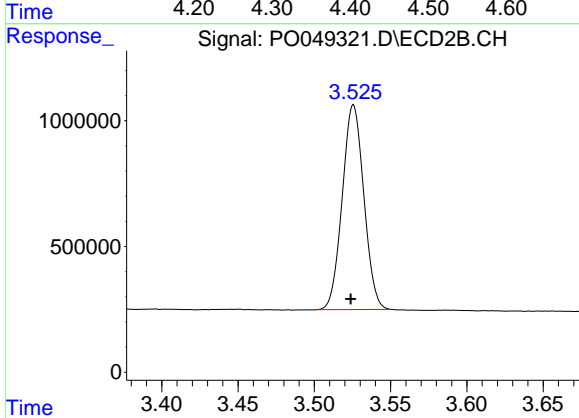
Volume Inj. : 2 µl
 Signal #1 Phase : ZB-MR1 Signal #2 Phase: ZB-MR2
 Signal #1 Info : 30Mx0.32mmx 0.50µ Signal #2 Info : 30M x 0.32mm x 0.25µm



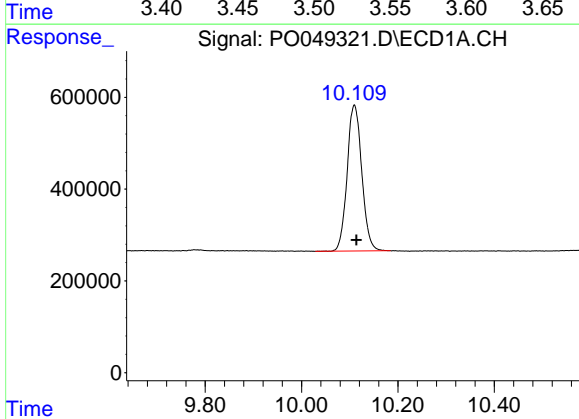


#1 Tetrachloro-m-xylene
 R.T.: 4.394 min
 Delta R.T.: -0.002 min
 Response: 8446051
 Conc: 45.49 ng/ml

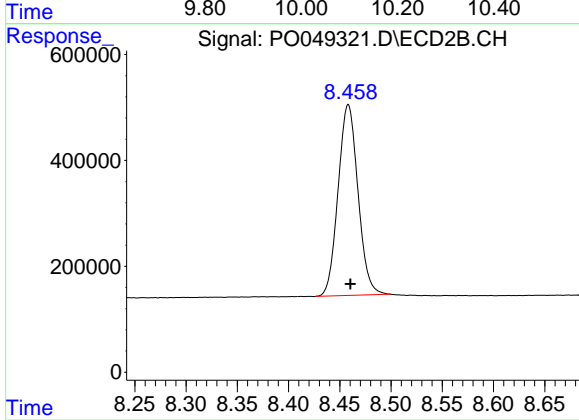
Instrument :
 ECD_O
ClientSampled :
 CONCRETE-WALL



#1 Tetrachloro-m-xylene
 R.T.: 3.526 min
 Delta R.T.: 0.002 min
 Response: 8023137
 Conc: 38.82 ng/ml



#2 Decachlorobiphenyl
 R.T.: 10.110 min
 Delta R.T.: -0.004 min
 Response: 6703850
 Conc: 24.39 ng/ml



#2 Decachlorobiphenyl
 R.T.: 8.458 min
 Delta R.T.: -0.002 min
 Response: 4861992
 Conc: 23.75 ng/ml