

Data Path : Z:\pestpcbsrv\HPCHEM1\ECD_0\Data\P0093019\
 Data File : P0061493.D
 Signal(s) : Signal #1: ECD1A.CH Signal #2: ECD2B.CH
 Acq On : 01 Oct 2019 3:05
 Operator : HP/AJ
 Sample : K5093-06
 Misc :
 ALS Vial : 33 Sample Multiplier: 1

Instrument :
 ECD_0
 ClientSampleId :
 SB-03-COMP

Integration File signal 1: autoint1.e
 Integration File signal 2: autoint2.e
 Quant Time: Oct 01 08:10:00 2019
 Quant Method : Z:\pestpcbsrv\HPCHEM1\ECD_0\methods\P0091319.M
 Quant Title : GC EXTRACTABLES
 QLast Update : Sat Sep 14 00:06:36 2019
 Response via : Initial Calibration
 Integrator: ChemStation 6890 Scale Mode: Small noise peaks clipped

Volume Inj. : 2 µl
 Signal #1 Phase : ZB-MR1 Signal #2 Phase: ZB-MR2
 Signal #1 Info : 30Mx0.32mmx 0.50µ Signal #2 Info : 30M x 0.32mm x 0.25µm

Compound	RT#1	RT#2	Resp#1	Resp#2	ng/ml	ng/ml

System Monitoring Compounds						
1) SA Tetrachlo...	4.365	3.526	1136915	835102	30.902	29.908
2) SA Decachlor...	10.026	8.392	923429	760629	20.098	21.700
Target Compounds						
31) L7 AR-1260-1	7.124	6.021	254813	214430	104.662	101.945
32) L7 AR-1260-2	7.378	6.207	560114	244458	185.263	94.770 #
33) L7 AR-1260-3	7.738	6.355	232935	189015	97.608	78.492
34) L7 AR-1260-4	7.962	6.819	338290	157564	120.918	73.620 #
35) L7 AR-1260-5	8.277	7.058	450956	323595	82.815	66.962

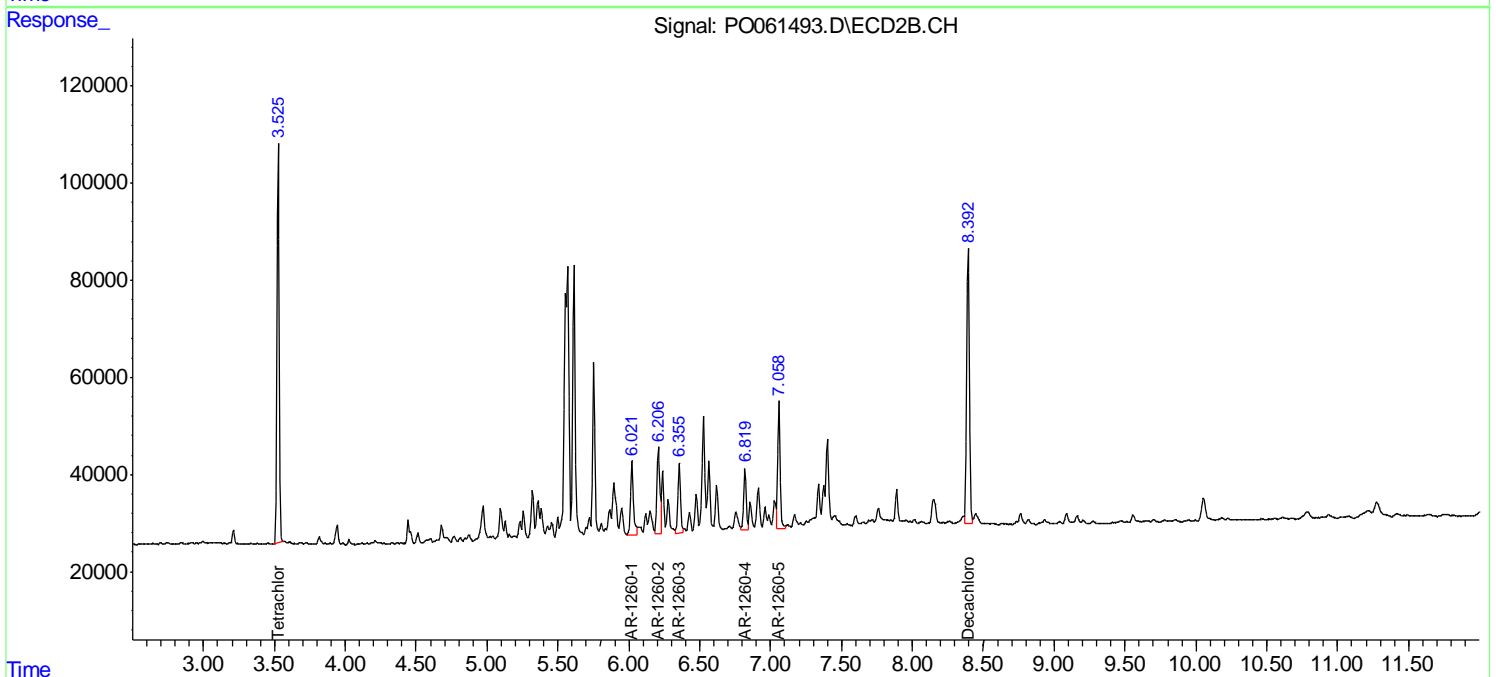
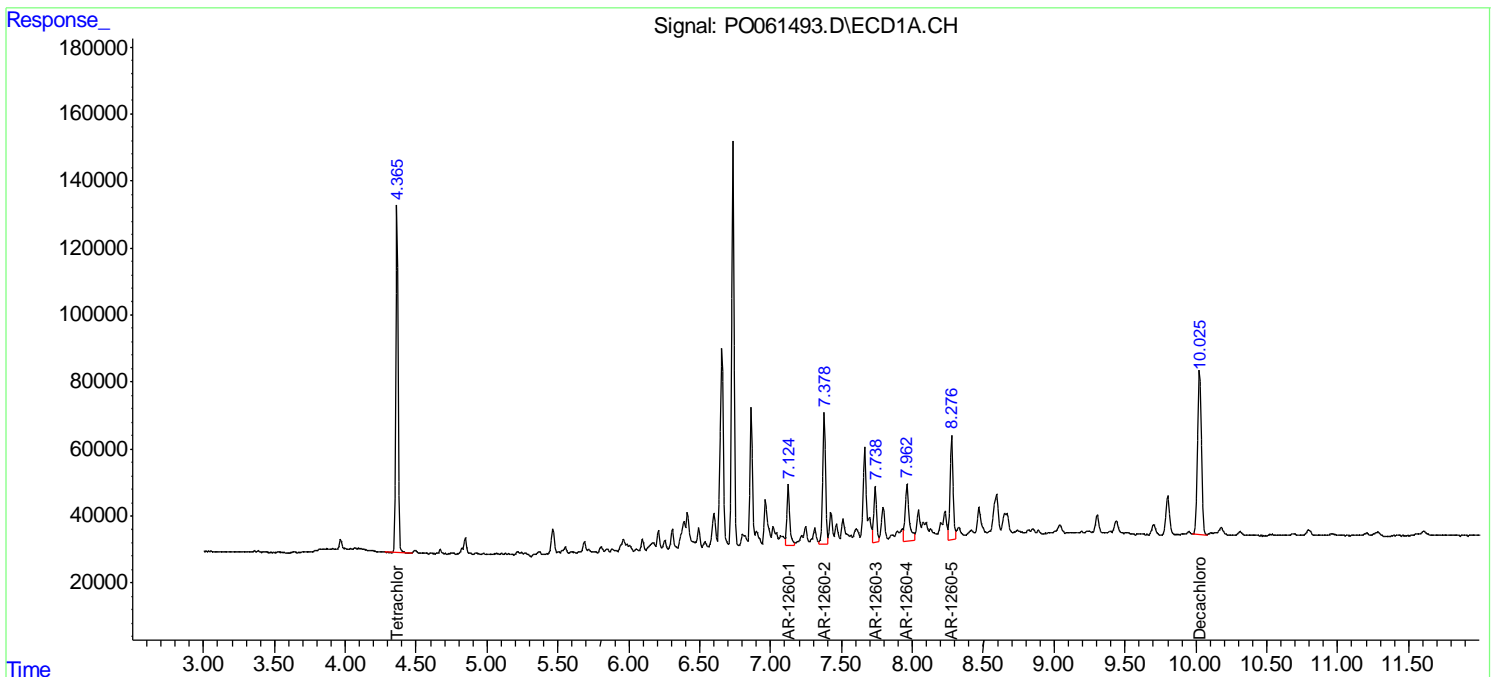
(f)=RT Delta > 1/2 Window (#)=Amounts differ by > 25% (m)=manual int.

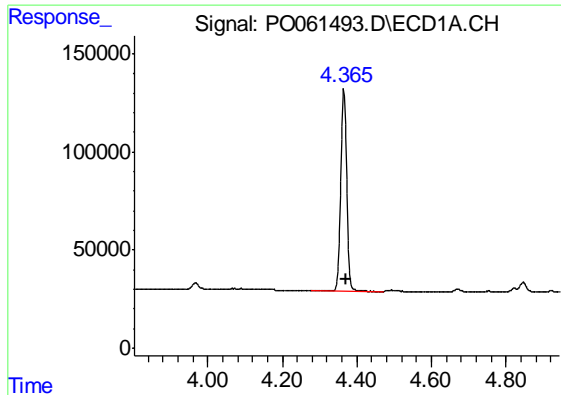
Data Path : Z:\pestpcbsrv\HPCHEM1\ECD_O\Data\P0093019\
 Data File : P0061493.D
 Signal(s) : Signal #1: ECD1A.CH Signal #2: ECD2B.CH
 Acq On : 01 Oct 2019 3:05
 Operator : HP/AJ
 Sample : K5093-06
 Misc :
 ALS Vial : 33 Sample Multiplier: 1

Instrument :
 ECD_O
 ClientSampleId :
 SB-03-COMP

Integration File signal 1: autoint1.e
 Integration File signal 2: autoint2.e
 Quant Time: Oct 01 08:10:00 2019
 Quant Method : Z:\pestpcbsrv\HPCHEM1\ECD_O\methods\P0091319.M
 Quant Title : GC EXTRACTABLES
 QLast Update : Sat Sep 14 00:06:36 2019
 Response via : Initial Calibration
 Integrator: ChemStation 6890 Scale Mode: Small noise peaks clipped

Volume Inj. : 2 µl
 Signal #1 Phase : ZB-MR1 Signal #2 Phase: ZB-MR2
 Signal #1 Info : 30Mx0.32mmx 0.50µ Signal #2 Info : 30M x 0.32mm x 0.25µm

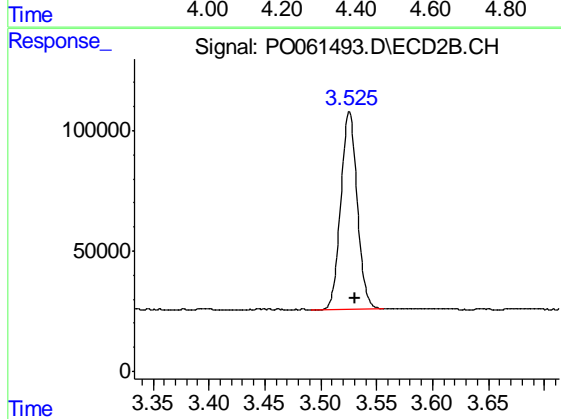




#1 Tetrachloro-m-xylene

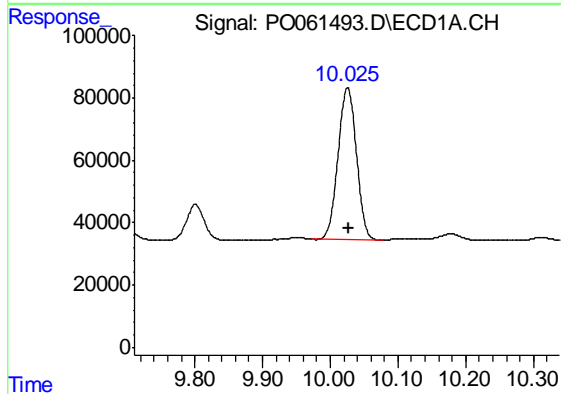
R.T.: 4.365 min
Delta R.T.: -0.005 min
Response: 1136915
Conc: 30.90 ng/ml

Instrument :
ECD_O
ClientSampleId :
SB-03-COMP



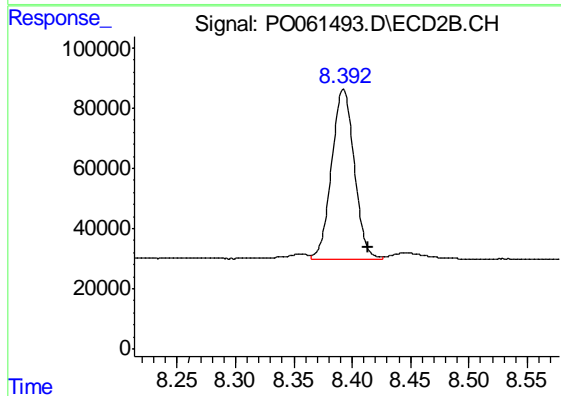
#1 Tetrachloro-m-xylene

R.T.: 3.526 min
Delta R.T.: -0.006 min
Response: 835102
Conc: 29.91 ng/ml



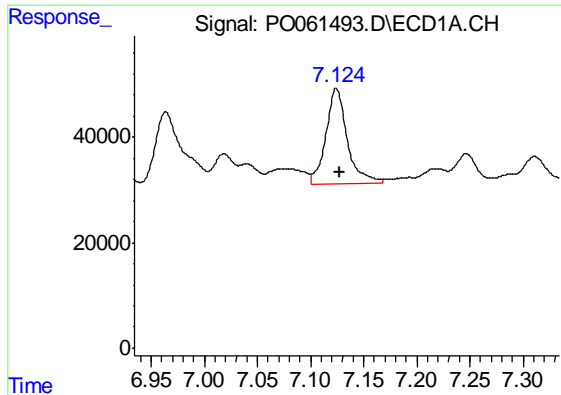
#2 Decachlorobiphenyl

R.T.: 10.026 min
Delta R.T.: -0.002 min
Response: 923429
Conc: 20.10 ng/ml



#2 Decachlorobiphenyl

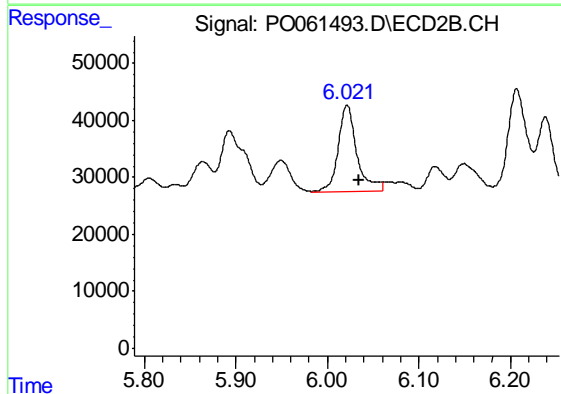
R.T.: 8.392 min
Delta R.T.: -0.021 min
Response: 760629
Conc: 21.70 ng/ml



#31 AR-1260-1

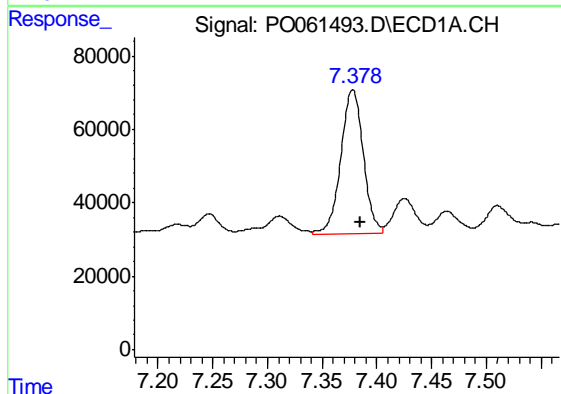
R.T.: 7.124 min
 Delta R.T.: -0.004 min
 Response: 254813
 Conc: 104.66 ng/ml

Instrument :
 ECD_O
 ClientSampleId :
 SB-03-COMP



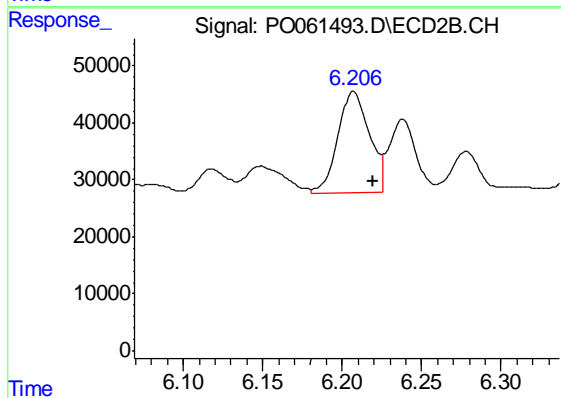
#31 AR-1260-1

R.T.: 6.021 min
 Delta R.T.: -0.013 min
 Response: 214430
 Conc: 101.94 ng/ml



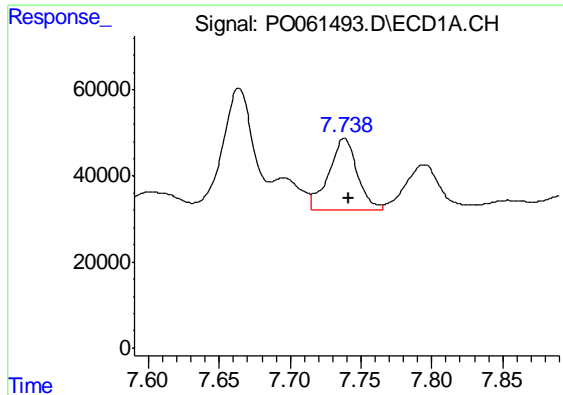
#32 AR-1260-2

R.T.: 7.378 min
 Delta R.T.: -0.006 min
 Response: 560114
 Conc: 185.26 ng/ml



#32 AR-1260-2

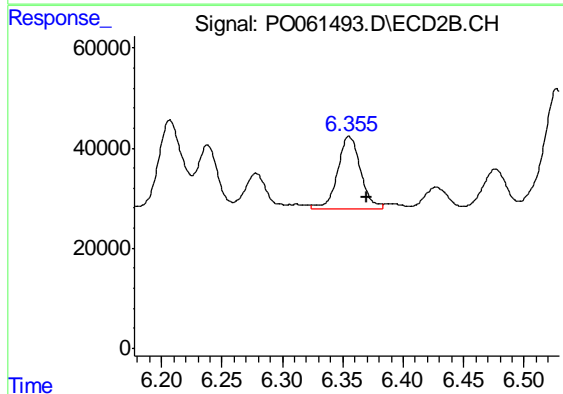
R.T.: 6.207 min
 Delta R.T.: -0.013 min
 Response: 244458
 Conc: 94.77 ng/ml



#33 AR-1260-3

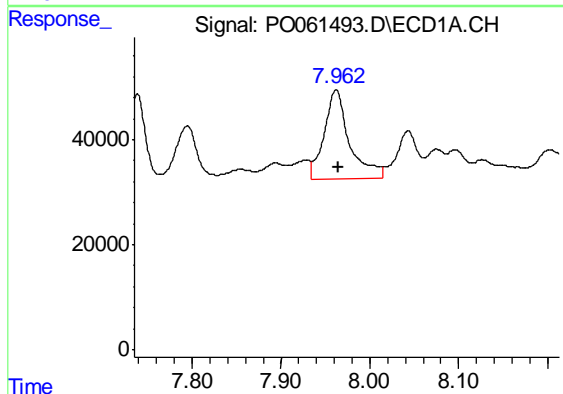
R.T.: 7.738 min
 Delta R.T.: -0.003 min
 Response: 232935
 Conc: 97.61 ng/ml

Instrument :
 ECD_O
 ClientSampleId :
 SB-03-COMP



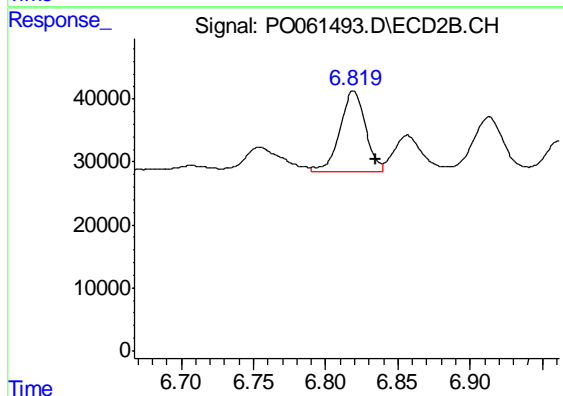
#33 AR-1260-3

R.T.: 6.355 min
 Delta R.T.: -0.014 min
 Response: 189015
 Conc: 78.49 ng/ml



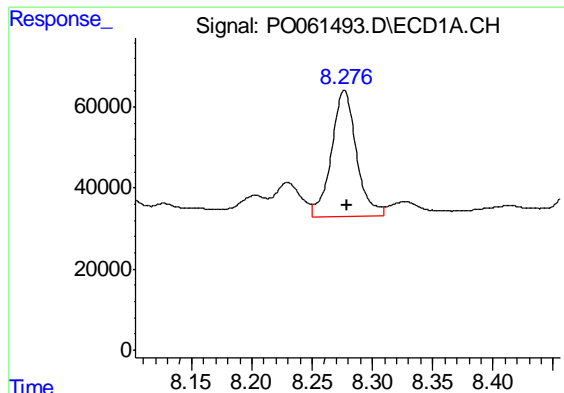
#34 AR-1260-4

R.T.: 7.962 min
 Delta R.T.: -0.003 min
 Response: 338290
 Conc: 120.92 ng/ml



#34 AR-1260-4

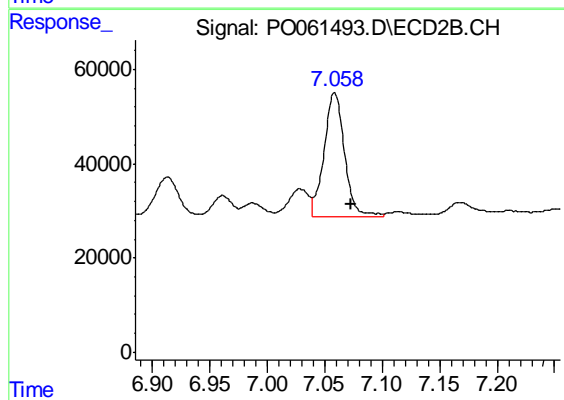
R.T.: 6.819 min
 Delta R.T.: -0.015 min
 Response: 157564
 Conc: 73.62 ng/ml



#35 AR-1260-5

R.T.: 8.277 min
Delta R.T.: -0.002 min
Response: 450956
Conc: 82.82 ng/ml

Instrument :
ECD_O
ClientSampleId :
SB-03-COMP



#35 AR-1260-5

R.T.: 7.058 min
Delta R.T.: -0.015 min
Response: 323595
Conc: 66.96 ng/ml