

Data Path : Z:\pestpcbsrv\HPCHEM1\ECD_O\Data\PO100219\
 Data File : P0061598.D
 Signal(s) : Signal #1: ECD1A.CH Signal #2: ECD2B.CH
 Acq On : 02 Oct 2019 18:43
 Operator : HP/AJ
 Sample : K5131-01
 Misc :
 ALS Vial : 13 Sample Multiplier: 1

Instrument :
 ECD_O
ClientSampleId :
 20190825-COMPOSITE-A

Manual Integrations
APPROVED
 Ankita
 10/4/2019 9:11:38 AM

Integration File signal 1: autoint1.e
 Integration File signal 2: autoint2.e
 Quant Time: Oct 03 17:18:47 2019
 Quant Method : Z:\pestpcbsrv\HPCHEM1\ECD_O\methods\PO100119.M
 Quant Title : GC EXTRACTABLES
 QLast Update : Tue Oct 01 15:34:04 2019
 Response via : Initial Calibration
 Integrator: ChemStation 6890 Scale Mode: Small noise peaks clipped

Volume Inj. : 2 µl
 Signal #1 Phase : ZB-MR1 Signal #2 Phase: ZB-MR2
 Signal #1 Info : 30Mx0.32mmx 0.50µ Signal #2 Info : 30M x 0.32mm x 0.25µm

Compound	RT#1	RT#2	Resp#1	Resp#2	ng/ml	ng/ml

System Monitoring Compounds						
1) SA Tetrachlo...	4.367	3.527	876861	652194	21.379	20.167
2) SA Decachlor...	10.032	8.396	450199	320515	9.667	9.900
Target Compounds						
16) L4 AR-1242-1	5.531	4.579	120628	97659	84.939	95.323
17) L4 AR-1242-2	5.553	4.597	204136	150886	101.568	106.994
18) L4 AR-1242-3	5.617	4.766	47307	56740	37.489	72.661 #
19) L4 AR-1242-4	5.712	4.848	58346	114935	55.527	140.063 #
20) L4 AR-1242-5	6.447	5.357	210542	188292	157.415	175.770m
26) L6 AR-1254-1	6.381	5.357	181164	194763	79.409	88.799
27) L6 AR-1254-2	6.601	5.502	302335	139877	83.678	71.348
28) L6 AR-1254-3	6.966	5.895	221682	220839	56.735	69.364
29) L6 AR-1254-4	7.250	6.119	141228	113591	46.631	55.988
30) L6 AR-1254-5	7.667	6.529	186497	140644	59.386	49.725

(f)=RT Delta > 1/2 Window (#)=Amounts differ by > 25% (m)=manual int.

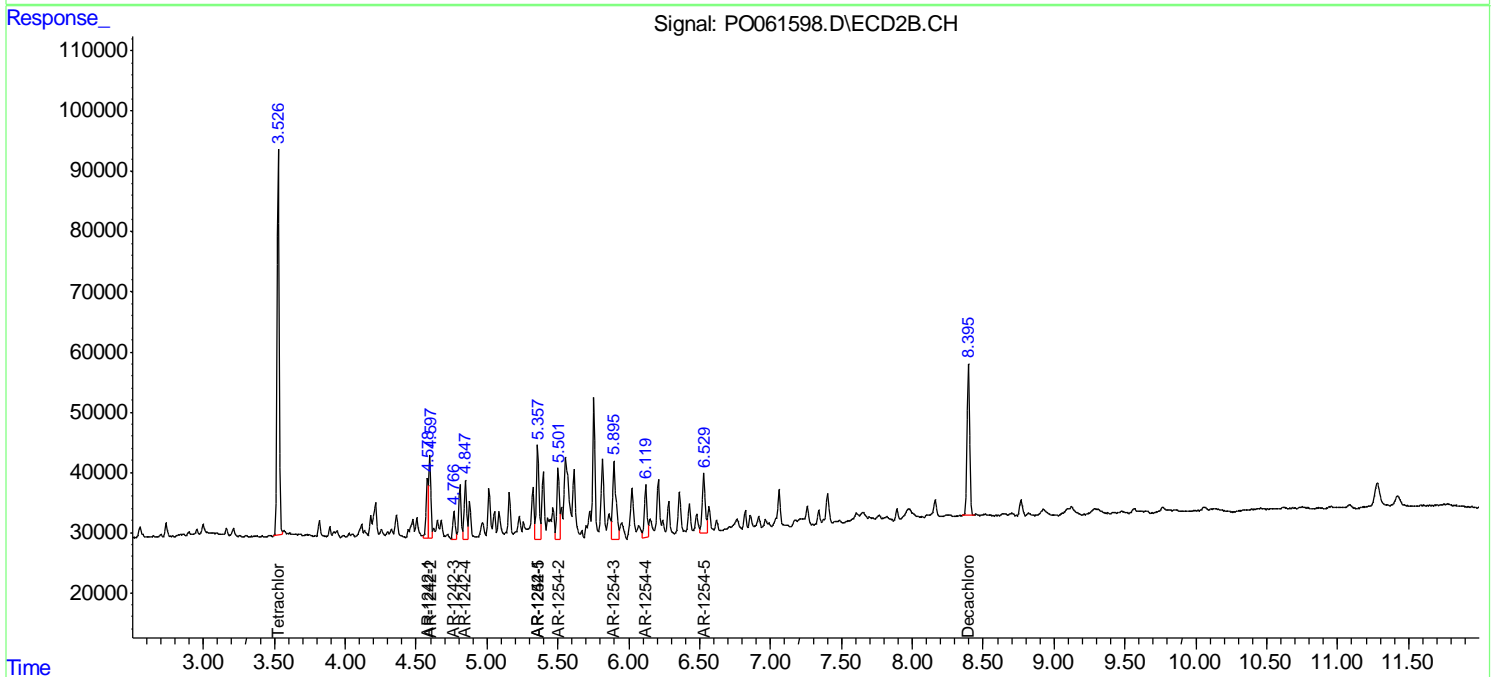
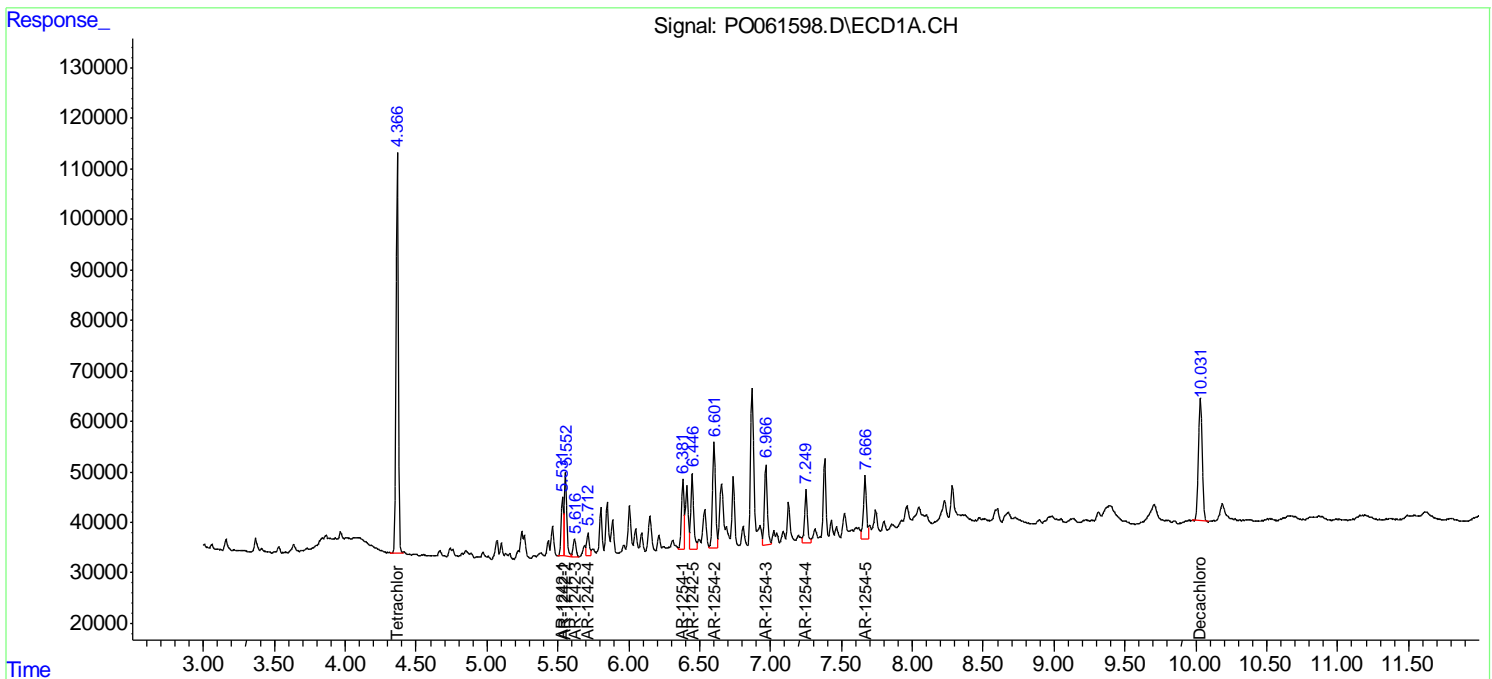
Data Path : Z:\pestpcbsrv\HPCHEM1\ECD_O\Data\PO100219\
 Data File : PO061598.D
 Signal(s) : Signal #1: ECD1A.CH Signal #2: ECD2B.CH
 Acq On : 02 Oct 2019 18:43
 Operator : HP/AJ
 Sample : K5131-01
 Misc :
 ALS Vial : 13 Sample Multiplier: 1

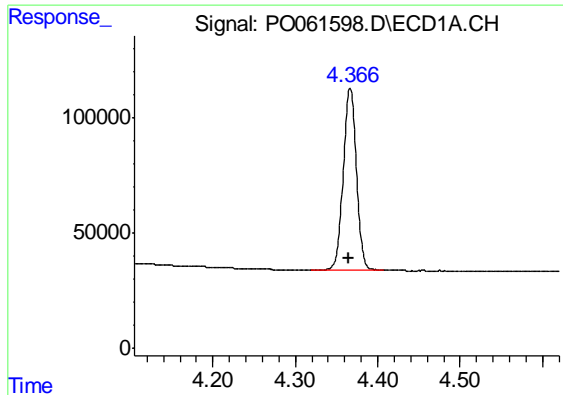
Instrument :
 ECD_O
Client Sampled :
 20190825-COMPOSITE-A

Manual Integrations
APPROVED
 Ankita
 10/4/2019 9:11:38 AM

Integration File signal 1: autoint1.e
 Integration File signal 2: autoint2.e
 Quant Time: Oct 03 17:18:47 2019
 Quant Method : Z:\pestpcbsrv\HPCHEM1\ECD_O\methods\PO100119.M
 Quant Title : GC EXTRACTABLES
 QLast Update : Tue Oct 01 15:34:04 2019
 Response via : Initial Calibration
 Integrator: ChemStation 6890 Scale Mode: Small noise peaks clipped

Volume Inj. : 2 µl
 Signal #1 Phase : ZB-MR1 Signal #2 Phase: ZB-MR2
 Signal #1 Info : 30Mx0.32mmx 0.50µ Signal #2 Info : 30M x 0.32mm x 0.25µm





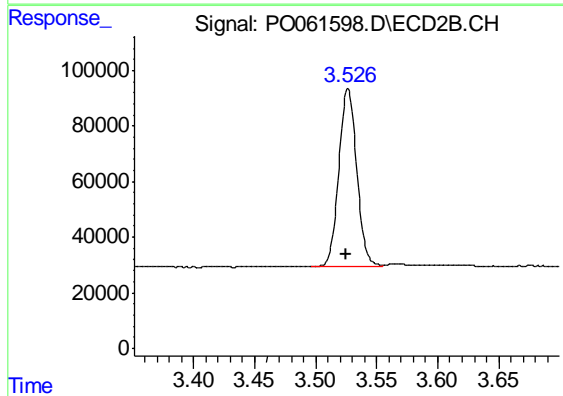
#1 Tetrachloro-m-xylene

R.T.: 4.367 min
 Delta R.T.: 0.002 min
 Response: 876861
 Conc: 21.38 ng/ml

Instrument :
 ECD_O
 ClientSampled :
 20190825-COMPOSITE-A

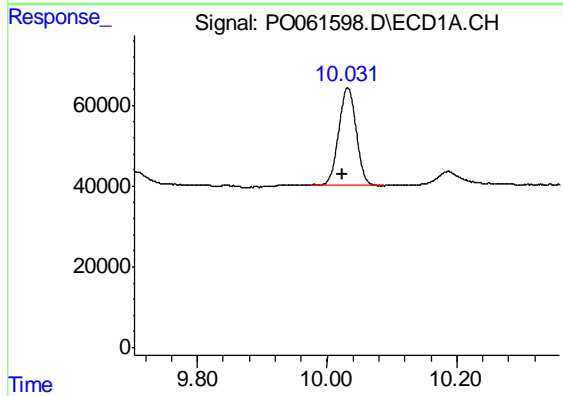
Manual Integrations
 APPROVED

Ankita
 10/4/2019 9:11:38 AM



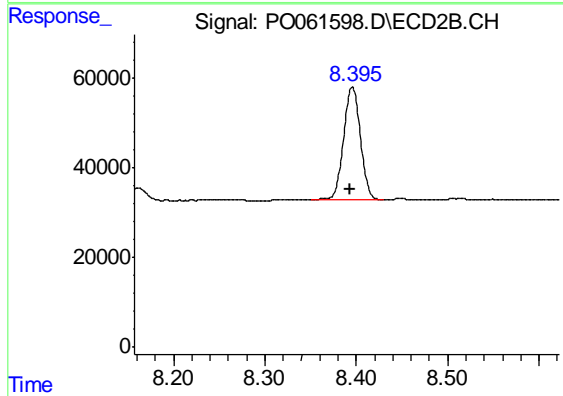
#1 Tetrachloro-m-xylene

R.T.: 3.527 min
 Delta R.T.: 0.001 min
 Response: 652194
 Conc: 20.17 ng/ml



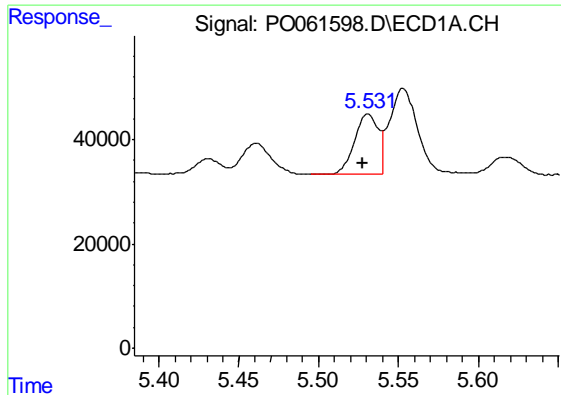
#2 Decachlorobiphenyl

R.T.: 10.032 min
 Delta R.T.: 0.007 min
 Response: 450199
 Conc: 9.67 ng/ml



#2 Decachlorobiphenyl

R.T.: 8.396 min
 Delta R.T.: 0.002 min
 Response: 320515
 Conc: 9.90 ng/ml



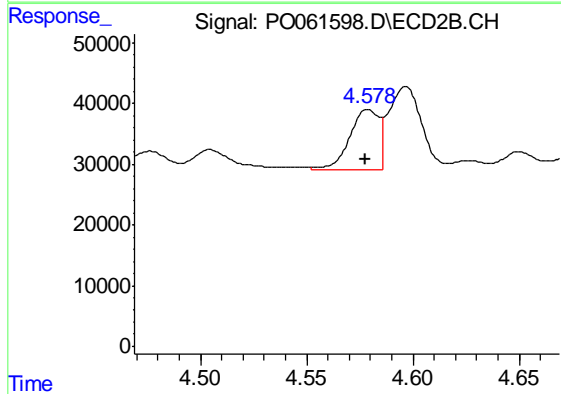
#16 AR-1242-1

R.T.: 5.531 min
 Delta R.T.: 0.003 min
 Response: 120628
 Conc: 84.94 ng/ml

Instrument :
 ECD_O
 ClientSampled :
 20190825-COMPOSITE-A

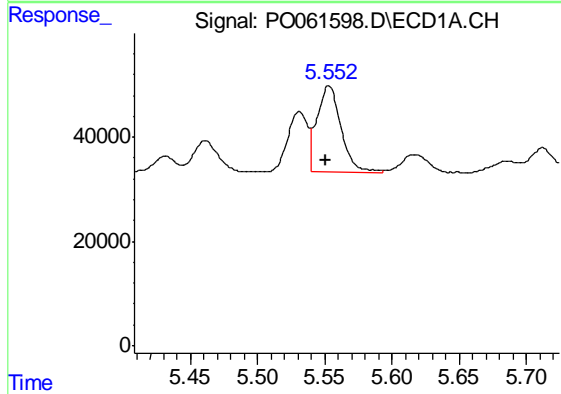
Manual Integrations
 APPROVED

Ankita
 10/4/2019 9:11:38 AM



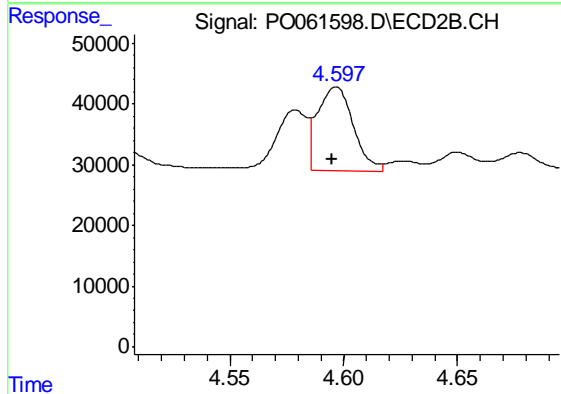
#16 AR-1242-1

R.T.: 4.579 min
 Delta R.T.: 0.001 min
 Response: 97659
 Conc: 95.32 ng/ml



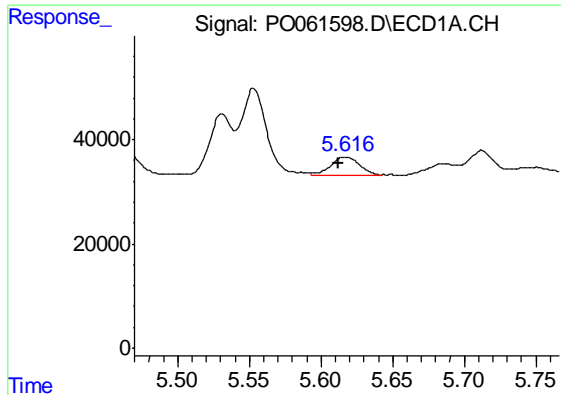
#17 AR-1242-2

R.T.: 5.553 min
 Delta R.T.: 0.003 min
 Response: 204136
 Conc: 101.57 ng/ml



#17 AR-1242-2

R.T.: 4.597 min
 Delta R.T.: 0.002 min
 Response: 150886
 Conc: 106.99 ng/ml



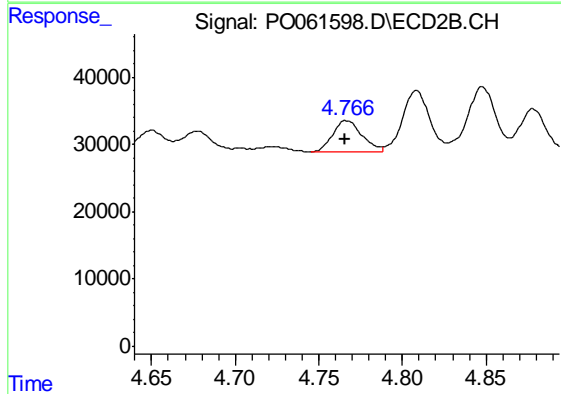
#18 AR-1242-3

R.T.: 5.617 min
 Delta R.T.: 0.005 min
 Response: 47307
 Conc: 37.49 ng/ml

Instrument :
 ECD_O
 ClientSampleId :
 20190825-COMPOSITE-A

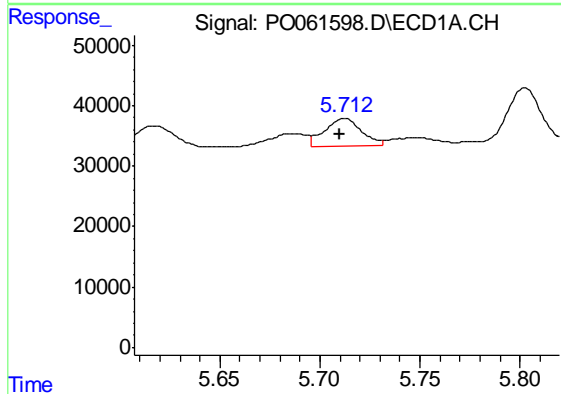
Manual Integrations
 APPROVED

Ankita
 10/4/2019 9:11:38 AM



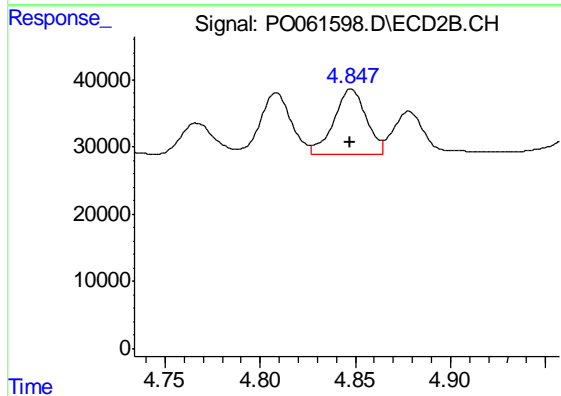
#18 AR-1242-3

R.T.: 4.766 min
 Delta R.T.: 0.000 min
 Response: 56740
 Conc: 72.66 ng/ml



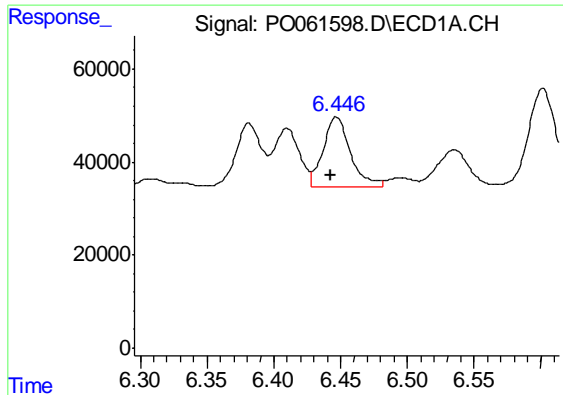
#19 AR-1242-4

R.T.: 5.712 min
 Delta R.T.: 0.002 min
 Response: 58346
 Conc: 55.53 ng/ml



#19 AR-1242-4

R.T.: 4.848 min
 Delta R.T.: 0.000 min
 Response: 114935
 Conc: 140.06 ng/ml



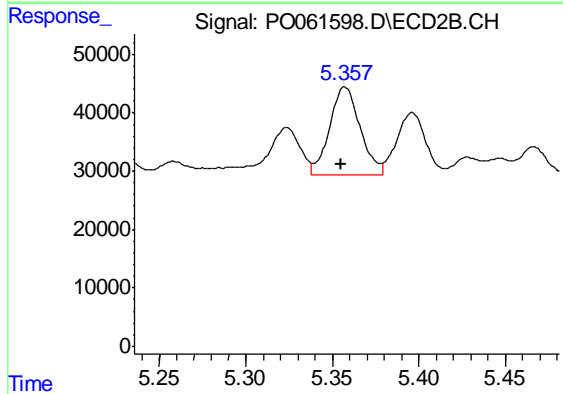
#20 AR-1242-5

R.T.: 6.447 min
 Delta R.T.: 0.004 min
 Response: 210542
 Conc: 157.41 ng/ml

Instrument :
 ECD_O
 ClientSampleId :
 20190825-COMPOSITE-A

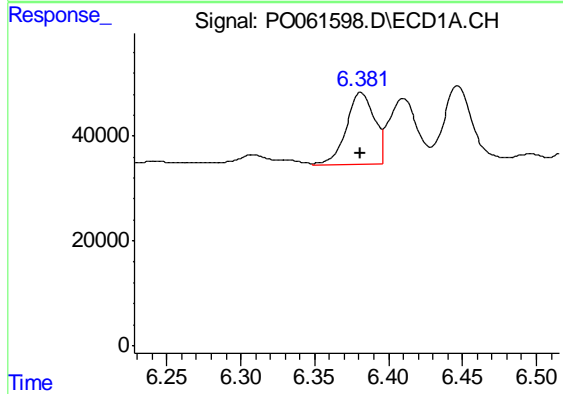
Manual Integrations
 APPROVED

Ankita
 10/4/2019 9:11:38 AM



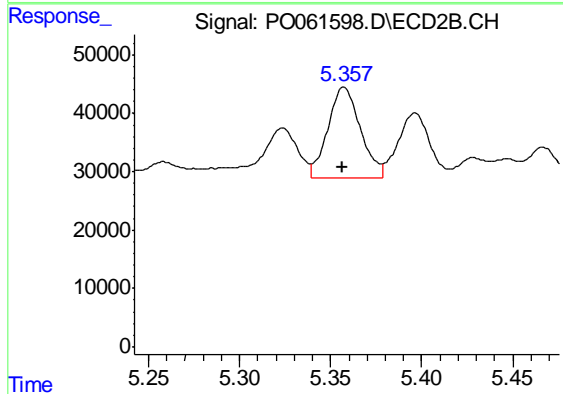
#20 AR-1242-5

R.T.: 5.357 min
 Delta R.T.: 0.001 min
 Response: 188292
 Conc: 175.77 ng/ml m



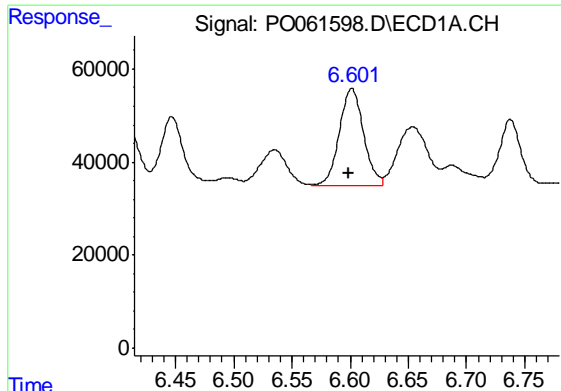
#26 AR-1254-1

R.T.: 6.381 min
 Delta R.T.: 0.000 min
 Response: 181164
 Conc: 79.41 ng/ml



#26 AR-1254-1

R.T.: 5.357 min
 Delta R.T.: 0.000 min
 Response: 194763
 Conc: 88.80 ng/ml



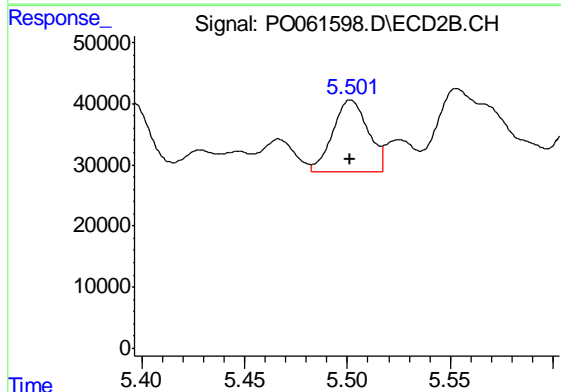
#27 AR-1254-2

R.T.: 6.601 min
 Delta R.T.: 0.002 min
 Response: 302335
 Conc: 83.68 ng/ml

Instrument :
 ECD_O
 ClientSampleId :
 20190825-COMPOSITE-A

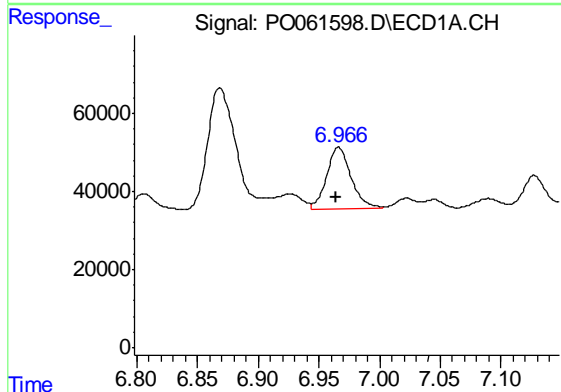
Manual Integrations
 APPROVED

Ankita
 10/4/2019 9:11:38 AM



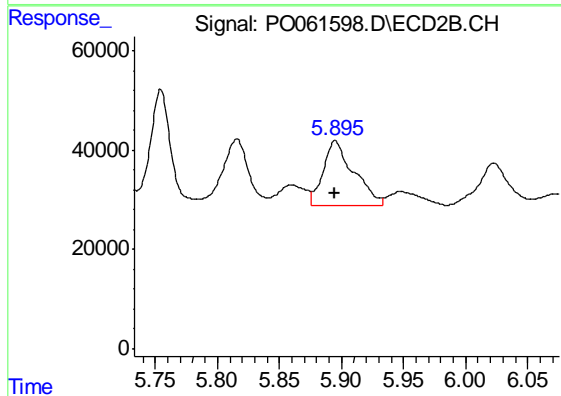
#27 AR-1254-2

R.T.: 5.502 min
 Delta R.T.: 0.000 min
 Response: 139877
 Conc: 71.35 ng/ml



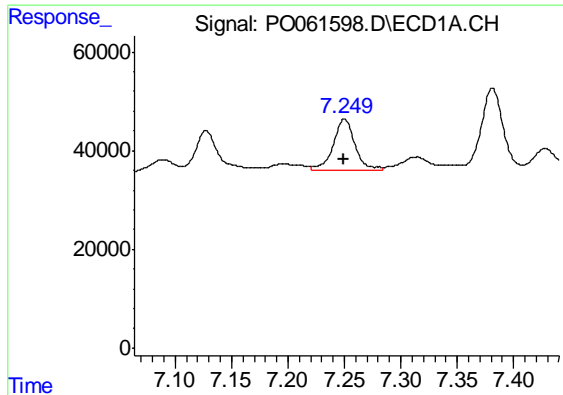
#28 AR-1254-3

R.T.: 6.966 min
 Delta R.T.: 0.002 min
 Response: 221682
 Conc: 56.73 ng/ml



#28 AR-1254-3

R.T.: 5.895 min
 Delta R.T.: 0.000 min
 Response: 220839
 Conc: 69.36 ng/ml



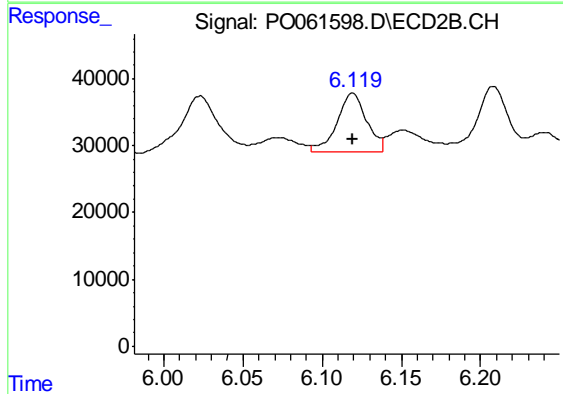
#29 AR-1254-4

R.T.: 7.250 min
 Delta R.T.: 0.000 min
 Response: 141228
 Conc: 46.63 ng/ml

Instrument :
 ECD_O
 ClientSampleId :
 20190825-COMPOSITE-A

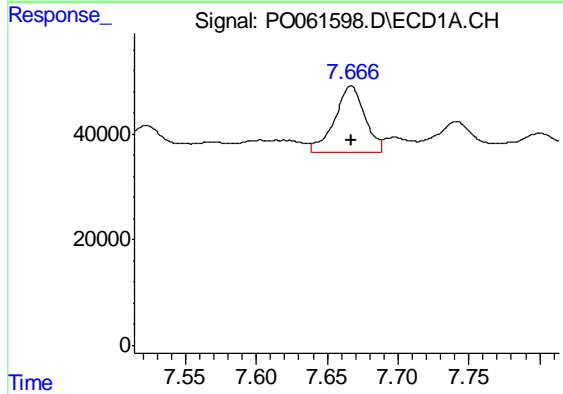
Manual Integrations
 APPROVED

Ankita
 10/4/2019 9:11:38 AM



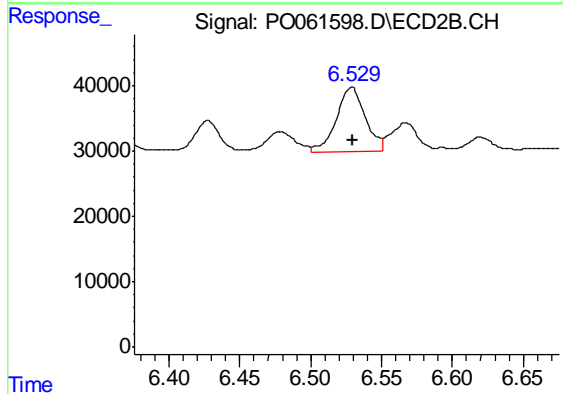
#29 AR-1254-4

R.T.: 6.119 min
 Delta R.T.: 0.000 min
 Response: 113591
 Conc: 55.99 ng/ml



#30 AR-1254-5

R.T.: 7.667 min
 Delta R.T.: 0.000 min
 Response: 186497
 Conc: 59.39 ng/ml



#30 AR-1254-5

R.T.: 6.529 min
 Delta R.T.: 0.000 min
 Response: 140644
 Conc: 49.72 ng/ml