

Data Path : Z:\pestpcbsrv\HPCHEM1\ECD_0\Data\PO100219\
 Data File : P0061606.D
 Signal(s) : Signal #1: ECD1A.CH Signal #2: ECD2B.CH
 Acq On : 02 Oct 2019 20:54
 Operator : HP/AJ
 Sample : K5131-07
 Misc :
 ALS Vial : 21 Sample Multiplier: 1

Instrument :
 ECD_0
ClientSampleId :
 20190831-COMPOSITE-G

Manual Integrations
APPROVED
 Ankita
 10/4/2019 9:11:52 AM

Integration File signal 1: autoint1.e
 Integration File signal 2: autoint2.e
 Quant Time: Oct 03 17:45:58 2019
 Quant Method : Z:\pestpcbsrv\HPCHEM1\ECD_0\methods\PO100119.M
 Quant Title : GC EXTRACTABLES
 QLast Update : Tue Oct 01 15:34:04 2019
 Response via : Initial Calibration
 Integrator: ChemStation 6890 Scale Mode: Small noise peaks clipped

Volume Inj. : 2 µl
 Signal #1 Phase : ZB-MR1 Signal #2 Phase: ZB-MR2
 Signal #1 Info : 30Mx0.32mmx 0.50µ Signal #2 Info : 30M x 0.32mm x 0.25µm

Compound	RT#1	RT#2	Resp#1	Resp#2	ng/ml	ng/ml

System Monitoring Compounds						
1) SA Tetrachlo...	4.367	3.527	734441	557108	17.907	17.227
2) SA Decachlor...	10.030	8.394	374780	267492	8.047	8.262
Target Compounds						
16) L4 AR-1242-1	5.531	4.578	87698	68399	61.752	66.763
17) L4 AR-1242-2	5.553	4.596	152031	112503	75.643	79.777
18) L4 AR-1242-3	5.618	4.766	43450	46844	34.433	59.989 #
19) L4 AR-1242-4	5.713	4.848	56339	88256	53.617	107.551 #
20) L4 AR-1242-5	6.447	5.357	161590	145764	120.815	136.069m
26) L6 AR-1254-1	6.382	5.358	146935	165897	64.406	75.638
27) L6 AR-1254-2	6.601	5.502	329619	122240	91.230	62.352 #
28) L6 AR-1254-3	6.966	5.895	181894	192831	46.552	60.567 #
29) L6 AR-1254-4	7.249	6.118	112715	102017	37.217	50.283 #
30) L6 AR-1254-5	7.666	6.529	150059	128541	47.783m	45.446

(f)=RT Delta > 1/2 Window (#)=Amounts differ by > 25% (m)=manual int.

Data Path : Z:\pestpcbsrv\HPCHEM1\ECD_O\Data\PO100219\
 Data File : PO061606.D
 Signal(s) : Signal #1: ECD1A.CH Signal #2: ECD2B.CH
 Acq On : 02 Oct 2019 20:54
 Operator : HP/AJ
 Sample : K5131-07
 Misc :
 ALS Vial : 21 Sample Multiplier: 1

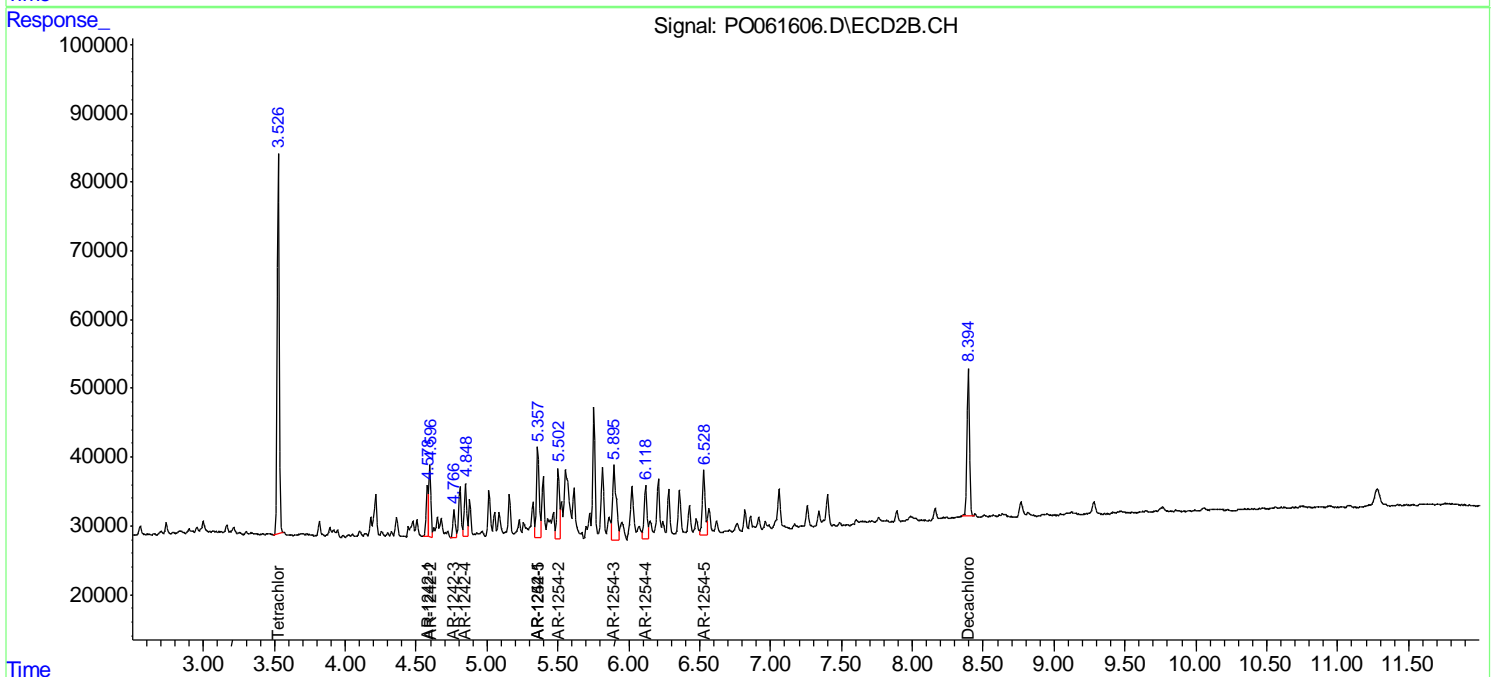
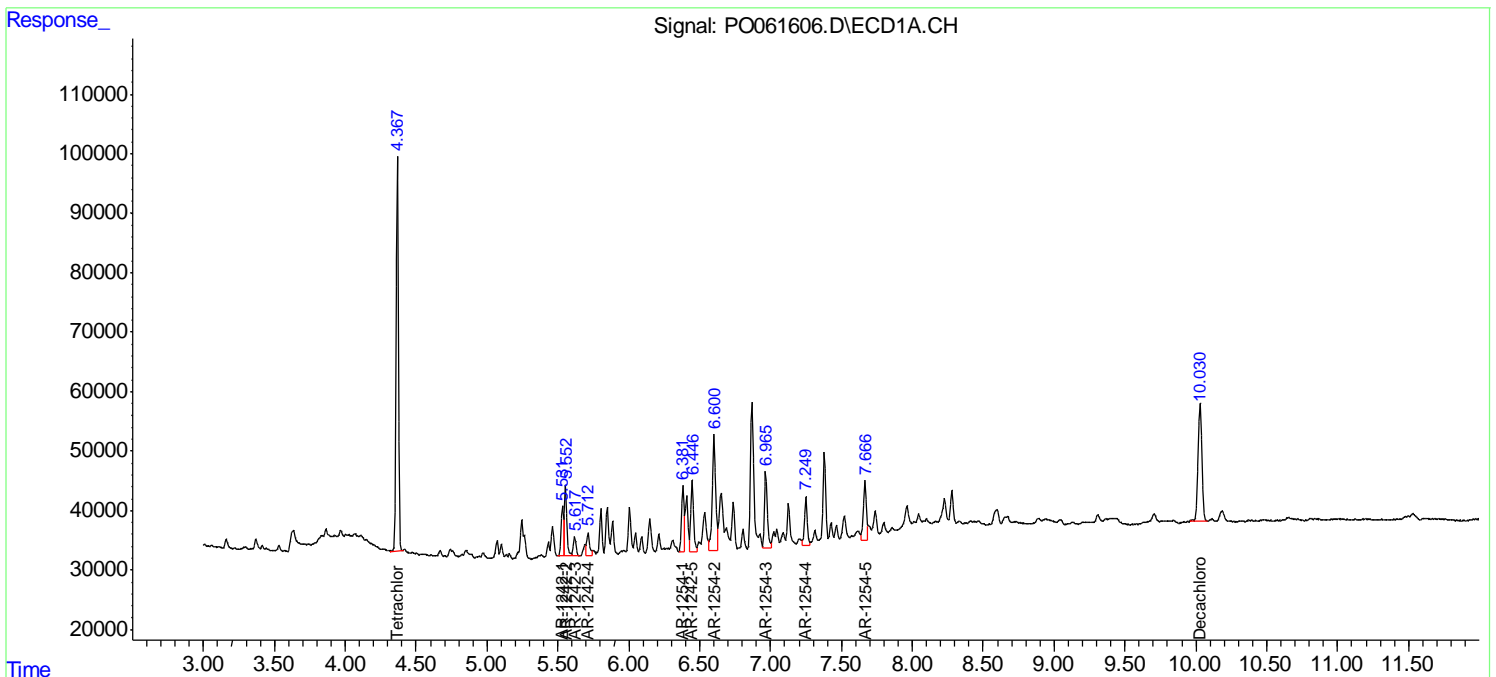
Instrument :
 ECD_O
 Client Sampled :
 20190831-COMPOSITE-G

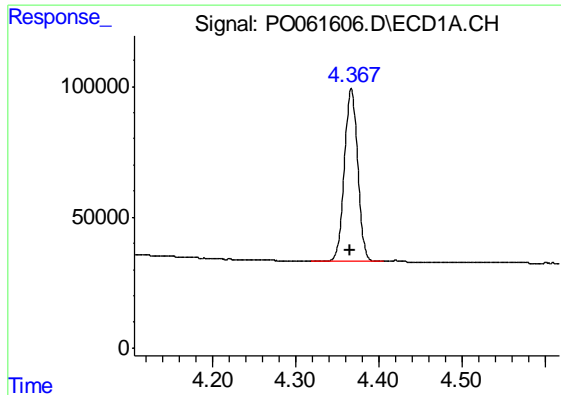
Manual Integrations
 APPROVED

Ankita
 10/4/2019 9:11:52 AM

Integration File signal 1: autoint1.e
 Integration File signal 2: autoint2.e
 Quant Time: Oct 03 17:45:58 2019
 Quant Method : Z:\pestpcbsrv\HPCHEM1\ECD_O\methods\PO100119.M
 Quant Title : GC EXTRACTABLES
 QLast Update : Tue Oct 01 15:34:04 2019
 Response via : Initial Calibration
 Integrator: ChemStation 6890 Scale Mode: Small noise peaks clipped

Volume Inj. : 2 µl
 Signal #1 Phase : ZB-MR1 Signal #2 Phase: ZB-MR2
 Signal #1 Info : 30Mx0.32mmx 0.50µ Signal #2 Info : 30M x 0.32mm x 0.25µm





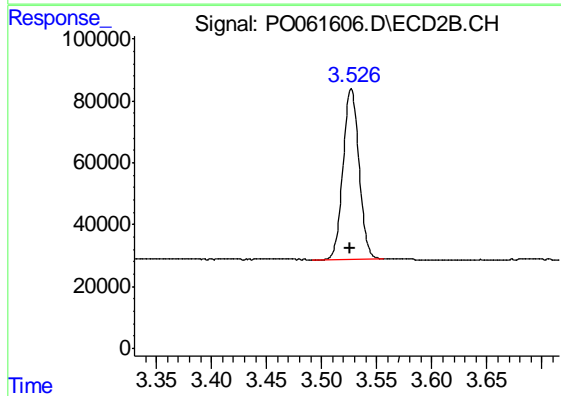
#1 Tetrachloro-m-xylene

R.T.: 4.367 min
 Delta R.T.: 0.002 min
 Response: 734441
 Conc: 17.91 ng/ml

Instrument :
 ECD_O
 ClientSampled :
 20190831-COMPOSITE-G

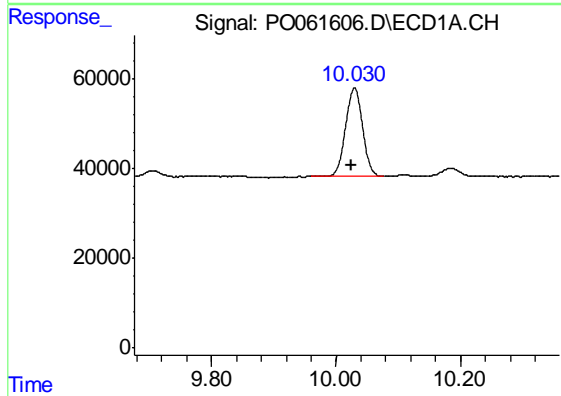
Manual Integrations
 APPROVED

Ankita
 10/4/2019 9:11:52 AM



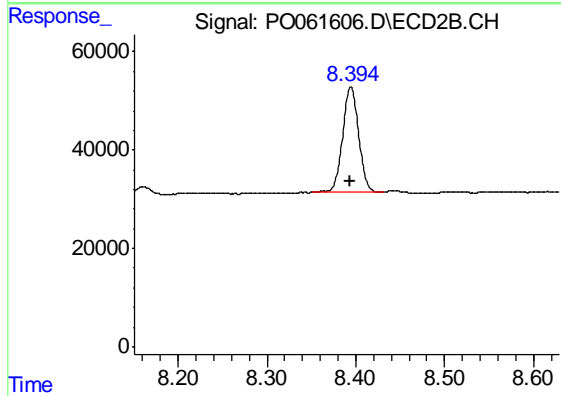
#1 Tetrachloro-m-xylene

R.T.: 3.527 min
 Delta R.T.: 0.001 min
 Response: 557108
 Conc: 17.23 ng/ml



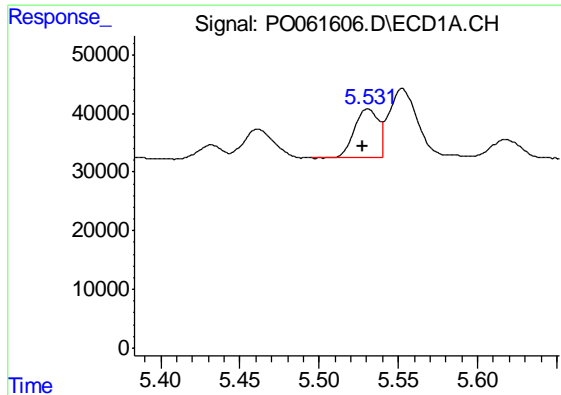
#2 Decachlorobiphenyl

R.T.: 10.030 min
 Delta R.T.: 0.005 min
 Response: 374780
 Conc: 8.05 ng/ml



#2 Decachlorobiphenyl

R.T.: 8.394 min
 Delta R.T.: 0.000 min
 Response: 267492
 Conc: 8.26 ng/ml



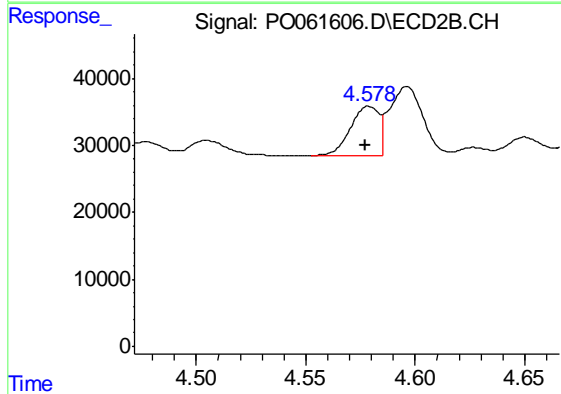
#16 AR-1242-1

R.T.: 5.531 min
 Delta R.T.: 0.003 min
 Response: 87698
 Conc: 61.75 ng/ml

Instrument :
 ECD_O
 ClientSampleId :
 20190831-COMPOSITE-G

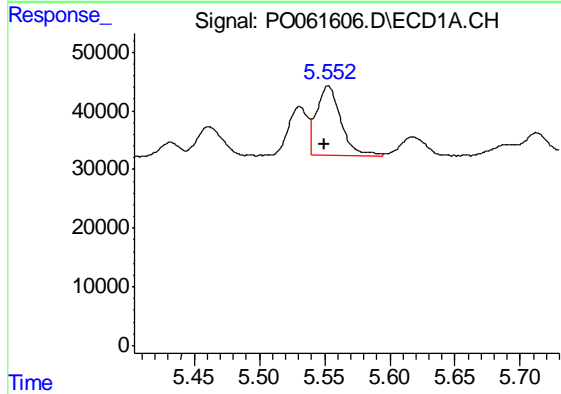
Manual Integrations
 APPROVED

Ankita
 10/4/2019 9:11:52 AM



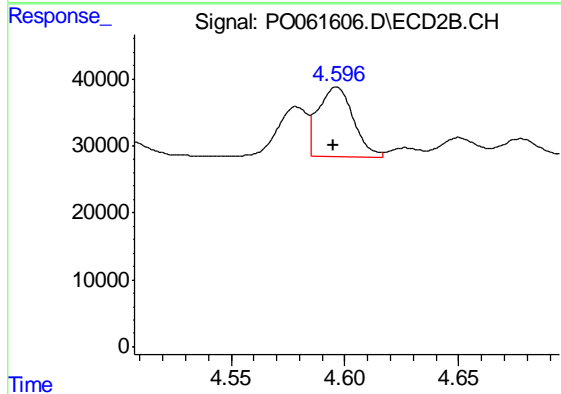
#16 AR-1242-1

R.T.: 4.578 min
 Delta R.T.: 0.000 min
 Response: 68399
 Conc: 66.76 ng/ml



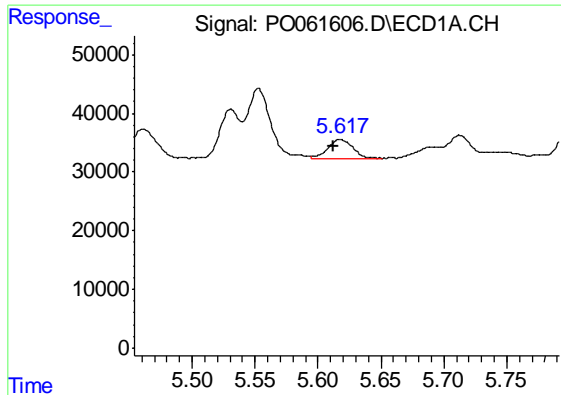
#17 AR-1242-2

R.T.: 5.553 min
 Delta R.T.: 0.002 min
 Response: 152031
 Conc: 75.64 ng/ml



#17 AR-1242-2

R.T.: 4.596 min
 Delta R.T.: 0.001 min
 Response: 112503
 Conc: 79.78 ng/ml



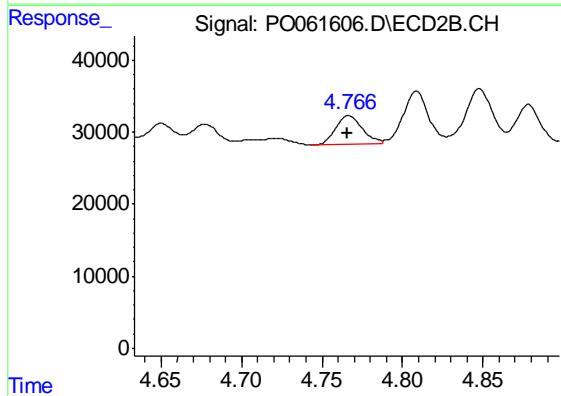
#18 AR-1242-3

R.T.: 5.618 min
 Delta R.T.: 0.006 min
 Response: 43450
 Conc: 34.43 ng/ml

Instrument :
 ECD_O
 ClientSampled :
 20190831-COMPOSITE-G

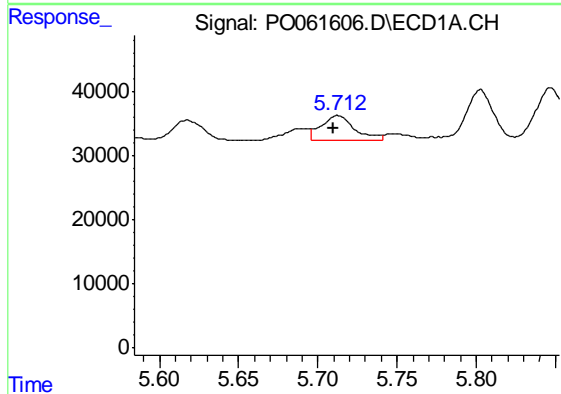
Manual Integrations
 APPROVED

Ankita
 10/4/2019 9:11:52 AM



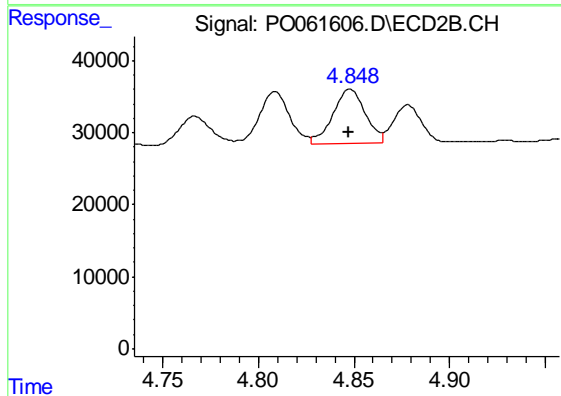
#18 AR-1242-3

R.T.: 4.766 min
 Delta R.T.: 0.000 min
 Response: 46844
 Conc: 59.99 ng/ml



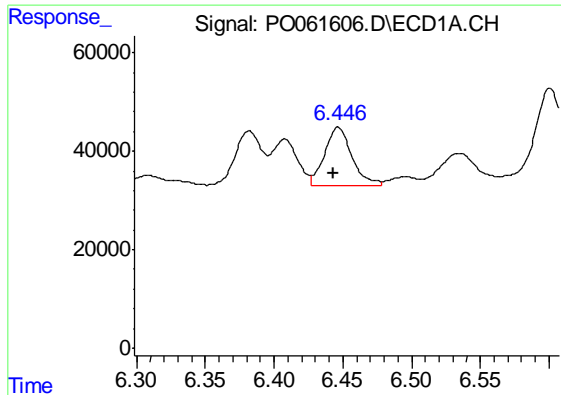
#19 AR-1242-4

R.T.: 5.713 min
 Delta R.T.: 0.002 min
 Response: 56339
 Conc: 53.62 ng/ml



#19 AR-1242-4

R.T.: 4.848 min
 Delta R.T.: 0.000 min
 Response: 88256
 Conc: 107.55 ng/ml



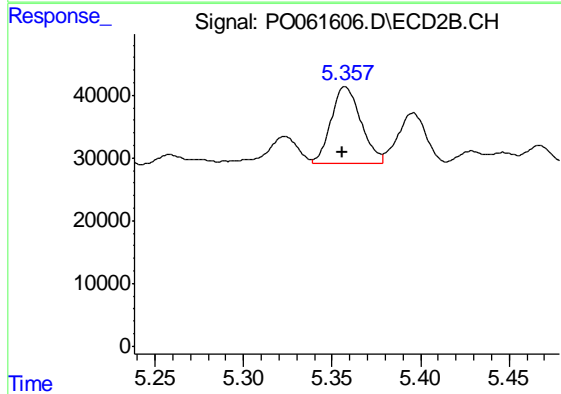
#20 AR-1242-5

R.T.: 6.447 min
 Delta R.T.: 0.003 min
 Response: 161590
 Conc: 120.82 ng/ml

Instrument :
 ECD_O
 ClientSampleId :
 20190831-COMPOSITE-G

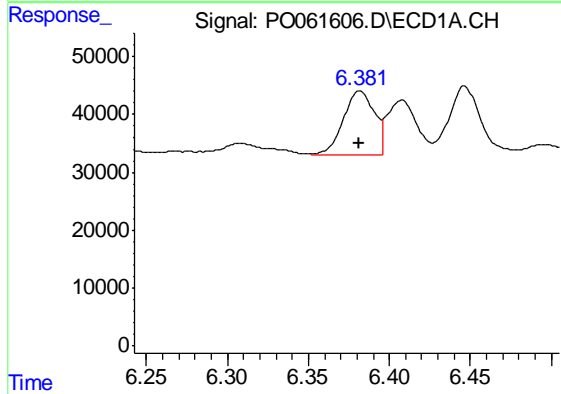
Manual Integrations
 APPROVED

Ankita
 10/4/2019 9:11:52 AM



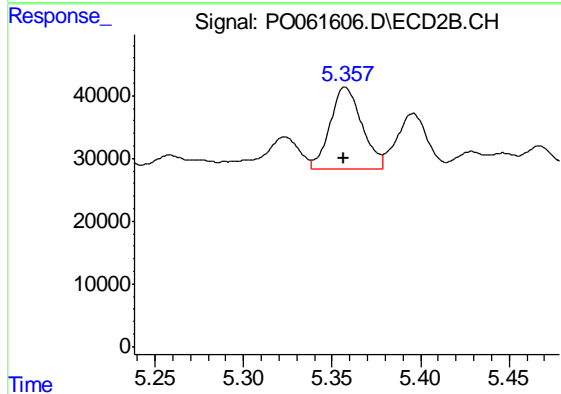
#20 AR-1242-5

R.T.: 5.357 min
 Delta R.T.: 0.002 min
 Response: 145764
 Conc: 136.07 ng/ml m



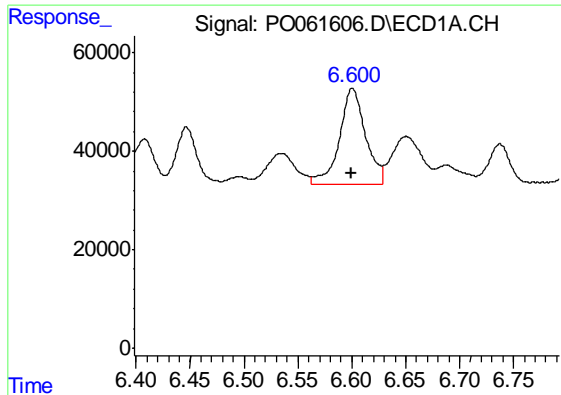
#26 AR-1254-1

R.T.: 6.382 min
 Delta R.T.: 0.000 min
 Response: 146935
 Conc: 64.41 ng/ml



#26 AR-1254-1

R.T.: 5.358 min
 Delta R.T.: 0.000 min
 Response: 165897
 Conc: 75.64 ng/ml



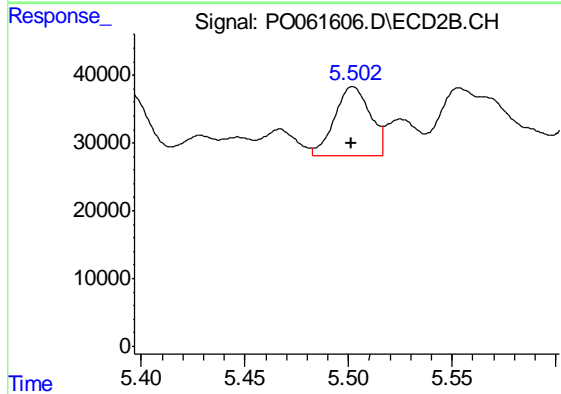
#27 AR-1254-2

R.T.: 6.601 min
 Delta R.T.: 0.001 min
 Response: 329619
 Conc: 91.23 ng/ml

Instrument :
 ECD_O
 ClientSampleId :
 20190831-COMPOSITE-G

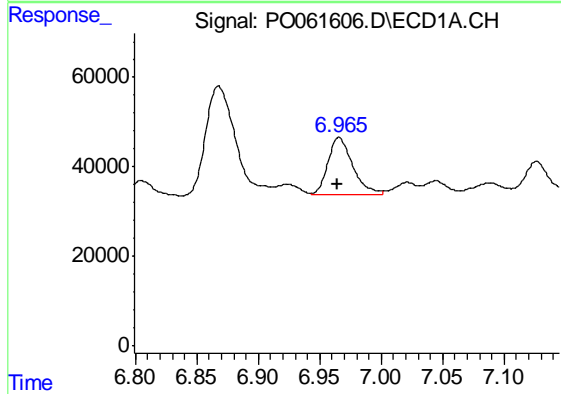
Manual Integrations
 APPROVED

Ankita
 10/4/2019 9:11:52 AM



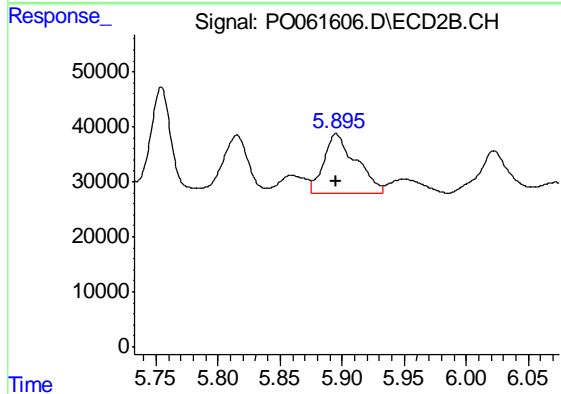
#27 AR-1254-2

R.T.: 5.502 min
 Delta R.T.: 0.000 min
 Response: 122240
 Conc: 62.35 ng/ml



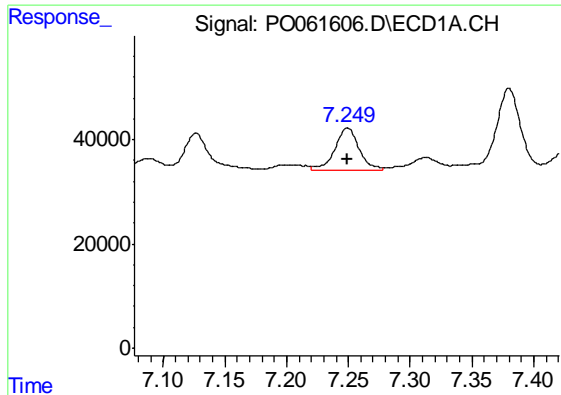
#28 AR-1254-3

R.T.: 6.966 min
 Delta R.T.: 0.001 min
 Response: 181894
 Conc: 46.55 ng/ml



#28 AR-1254-3

R.T.: 5.895 min
 Delta R.T.: 0.000 min
 Response: 192831
 Conc: 60.57 ng/ml



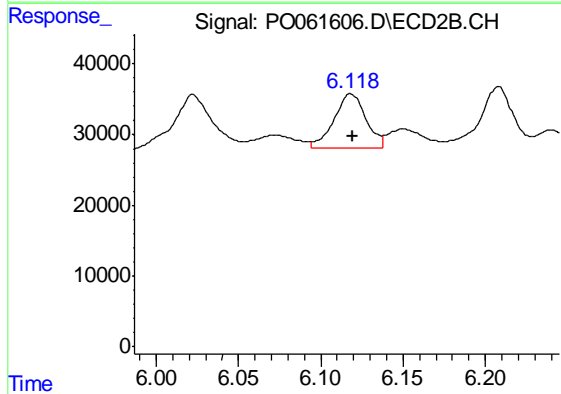
#29 AR-1254-4

R.T.: 7.249 min
 Delta R.T.: 0.000 min
 Response: 112715
 Conc: 37.22 ng/ml

Instrument :
 ECD_O
 ClientSampleId :
 20190831-COMPOSITE-G

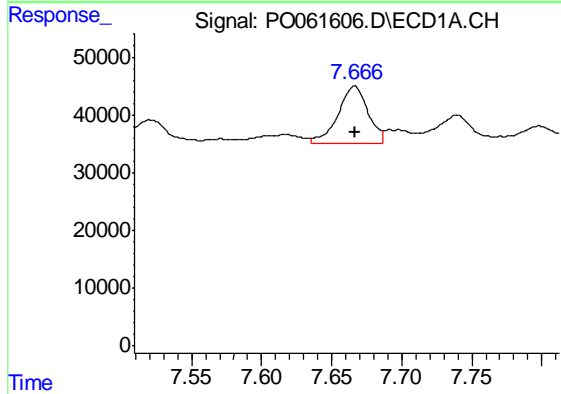
Manual Integrations
 APPROVED

Ankita
 10/4/2019 9:11:52 AM



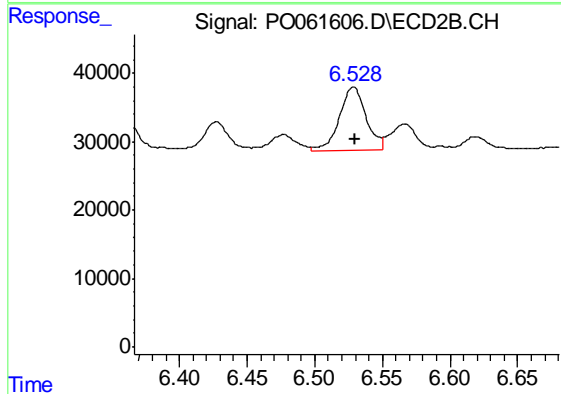
#29 AR-1254-4

R.T.: 6.118 min
 Delta R.T.: 0.000 min
 Response: 102017
 Conc: 50.28 ng/ml



#30 AR-1254-5

R.T.: 7.666 min
 Delta R.T.: 0.000 min
 Response: 150059
 Conc: 47.78 ng/ml m



#30 AR-1254-5

R.T.: 6.529 min
 Delta R.T.: -0.001 min
 Response: 128541
 Conc: 45.45 ng/ml